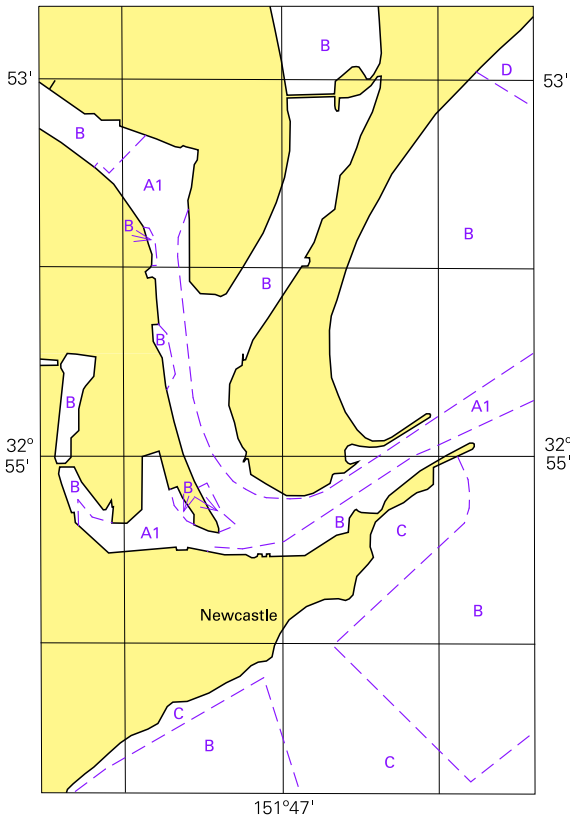


Zone of Confidence (ZOC) Diagram
151°47'



ZOC CATEGORIES

(For details see Australian Seafarers Handbook, AHP 20)

| ZOC | POSITION ACCURACY | DEPTH ACCURACY | SEAFLOOR COVERAGE |
|-----|---|------------------|---|
| A1 | ±5m | =0.50m + 1% d | All significant seafloor features detected |
| A2 | ±20m | =1.00m + 2% d | All significant seafloor features detected |
| B | ±50m | =1.00m + 2% d | Uncharted features hazardous to surface navigation are not expected but may exist |
| C | ±500m | =2.00m + 5% d | Depth anomalies may be expected |
| D | Worse than ZOC C | Worse than ZOC C | Large depth anomalies may be expected |
| U | Unassessed - The quality of the bathymetric data has yet to be assessed | | |

Tidal Levels referred to Datum of Soundings

| Place | Lat S | Long E | Heights in metres above datum | | | | | |
|-----------|--------|---------|-------------------------------|------|------|-----|------|------|
| | | | HAT | MHWS | MHWN | MSL | MLWN | MLWS |
| Newcastle | 32°56' | 151°47' | 2.1 | 1.6 | 1.4 | 1.0 | 0.6 | 0.4 |

