



Australian Notices to Mariners are the authority for correcting Australian Charts and Publications

AUSTRALIAN NOTICES TO MARINERS

© Commonwealth of Australia 2007 - Copyright restrictions apply to Notices to Mariners



Notices 300 - 336

List of Temporary and Preliminary Notices in force Cumulative List – April 2007

Published fortnightly by the Australian Hydrographic Service

R. NAIRN

Hydrographer of Australia

- SECTIONS.**
- I. **Australian Notices to Mariners, including blocks and notes.**
 - II. **Amendments to Admiralty List of Lights and Fog Signals, Vol K**
 - III. **Navigational Warnings.**
 - IV. **Hydrographic Reports.**
 - V. **Amendments to Admiralty List of Radio Signals (NP 281(2), 282, 283(2), 285, 286(4))**
 - VI. **Amendments to Admiralty Sailing Directions (NP 9, 13, 14, 15, 33, 34, 35, 36, 39, 44, 51, 60, 61, 62, 100, 136)**

[British Admiralty Notices to Mariners](#)

[New Zealand Notices to Mariners](#)

The substance of these notices should be inserted on the charts affected.

Bearings are referred to the true compass and are reckoned clockwise from North; those relating to lights are given as seen by an observer from seaward. Positions quoted in permanent notices relate to the horizontal datum for the chart(s). When preliminary or temporary notices affect multiple charts, positions will be provided in relation to only one horizontal datum and that datum will be specified. When the multiple charts do not have a common horizontal datum, mariners will be required to adjust the position(s) for those charts not on the specified datum. The range quoted for a light is its nominal range. Depths are with reference to the chart datum of each chart. Heights are above mean high water springs or mean higher high water, as appropriate.

The capital letter (P) or (T) after the number of any notice denotes a preliminary or temporary notice respectively, which are contained separately at the end of the permanent notices. A star () adjacent to the number of a notice indicates that the notice is based on original information.*

Mariners are particularly requested to notify the AUSTRALIAN HYDROGRAPHIC SERVICE, Locked Bag 8801 Wollongong, NSW 2500 (Fax 02-4221 8599, e-mail Hydro.NTM@defence.gov.au or, alternatively by filling in and submitting the [Hydrographic Notes](#) forms located on the web site – www.hydro.gov.au), immediately on the discovery of new dangers or suspected dangers to navigation. For changes or defects in aids to navigation notify AusSAR (Fax 02-6230 6868 or email rccaus@amsa.gov.au).

Copies of these notices can be obtained from the AUSTRALIAN HYDROGRAPHIC OFFICE, 8 Station Street, Wollongong; Distributors for the sale of Australian Navigational Products; AHS website www.hydro.gov.au or register for eNotices at www.hydro.gov.au/enotices/enotices.htm.

The Notices may be copied for the purpose of inserting their substance on official charts and other publications. However, any copies of the notices may not be sold for profit.

IMPORTANT NOTICE

This edition of Notices to Mariners includes all significant information affecting AHS products which the AHS has become aware of since the last edition. All reasonable efforts have been made to ensure the accuracy and completeness of the information, including third party information, on which these updates are based. The AHS regards third parties from which it receives information as reliable, however the AHS cannot verify all such information and errors may therefore exist. The AHS does not accept liability for errors in third party information.

This work is copyright. Apart from any use permitted under the Copyright Act 1968, no part may be reproduced by any process, adapted, communicated or commercially exploited without prior written permission from The Commonwealth represented by the Australian Hydrographic Service. Copyright in some of the material in this publication may be owned by another party and permission for the reproduction of that material must be obtained from the owner.

NUMERICAL INDEX OF CHARTS AFFECTED

Edition No 7

13 April 2007

Notices	Aus Chart
300.....	Aus 507, 510, 511, 545, 554, 600, 777, 778, INT 9036
301.....	Amendment to Australian Notice to Mariners No 2
302.....	Aus 381, 382, 395, 397, 539, 568
303.....	Aus 198, 199
304.....	Aus 200, 201
305.....	Aus 208
306.....	Aus 246, 366, 819
307.....	Aus 377, 837
308.....	Aus 376, 377
309.....	Aus 376, 377, 378, 840
310.....	Aus 376, 377, 840
311.....	Aus 700
312.....	Aus 26, AX 72026
313.....	Aus 26, 28, AX 70026
314.....	Aus 345, 346, 347, 444, 780
315.....	Aus 174
316.....	Cumulative List of Australian Notices to Mariners - April 2007
317(T).....	Aus 235, 814
318(T).....	Aus 238
319(T).....	Aus 249, 823
320(T).....	Aus 249, 250
321(T).....	Aus 253, 268
322(T).....	Aus 831
323(T).....	Aus 382, 511, 4060, 4604, 4621, INT 60, 604, 621
324(T).....	Aus 461, 4622, INT 622
325(T).....	Aus 397, 461, 545, 554, 680
326(T).....	Aus 666
327(T).....	Aus 547
328(P).....	Aus 715
329(P).....	Aus 26, AX 72026
330(T).....	Aus 26, 722, AX 72026, 72722
331(P).....	Aus 727
332(P).....	Aus 727, 728
333(T).....	Aus 64, 743
334(T).....	Aus 113
335(T).....	Aus 4060, 4074, 4601, INT 60, 74, 601
336(T).....	Temporary and Preliminary notices in force

NUMERICAL INDEX OF CHARTS AFFECTED

Edition No 7

Aus Chart	Notices	INT Chart	Notices
Aus 26.....	312, 313, 329(P), 330(T)	INT 60.....	323(T), 335(T)
Aus 28.....	313	INT 74.....	335(T)
Aus 64.....	333(T)	INT 601.....	335(T)
Aus 113.....	334(T)	INT 604.....	323(T)
Aus 174.....	315	INT 621.....	323(T)
Aus 198.....	303	INT 622.....	324(T)
Aus 199.....	303	INT 9036.....	300
Aus 200.....	304		
Aus 201.....	304		
Aus 208.....	305		
Aus 235.....	317(T)		
Aus 238.....	318(T)		
Aus 246.....	306		
Aus 249.....	319(T), 320(T)		
Aus 250.....	320(T)		
Aus 253.....	321(T)		
Aus 268.....	321(T)		
Aus 345.....	314		
Aus 346.....	314		
Aus 347.....	314		
Aus 366.....	306		
Aus 376.....	308, 309, 310		
Aus 377.....	307, 308, 309, 310		
Aus 378.....	309		
Aus 381.....	302		
Aus 382.....	302, 323(T)		
Aus 395.....	302		
Aus 397.....	302, 325(T)		
Aus 444.....	314		
Aus 461.....	324(T), 325(T)		
Aus 507.....	300		
Aus 510.....	300		
Aus 511.....	300, 323(T)		
Aus 539.....	302		
Aus 545.....	300, 325(T)		
Aus 547.....	327(T)		
Aus 554.....	300, 325(T)		
Aus 568.....	302		
Aus 600.....	300		
Aus 666.....	326(T)		
Aus 680.....	325(T)		
Aus 700.....	311		
Aus 715.....	328(P)		
Aus 722.....	330(T)		
Aus 727.....	331(P), 332(P)		
Aus 728.....	332(P)		
Aus 743.....	333(T)		
Aus 777.....	300		
Aus 778.....	300		
Aus 780.....	314		
Aus 814.....	317(T)		
Aus 819.....	306		
Aus 823.....	319(T)		
Aus 831.....	322(T)		
Aus 837.....	307		
Aus 840.....	309, 310		
Aus 4060.....	323(T), 335(T)		
Aus 4074.....	335(T)		
Aus 4601.....	335(T)		
Aus 4604.....	323(T)		
Aus 4621.....	323(T)		
Aus 4622.....	324(T)		
AX 72026.....	312, 313, 329(P), 330(T)		
AX 72722.....	330(T)		

300 AUSTRALIA - Products

New Chart

Chart	Published	Title, limits and description of amendments	Scale	Folio	Index Chart	Price
Aus 510	2/2/2007	Papua New Guinea - North East Coast - Long Reef to Sudest Island 10° 54' 18" S - 11° 47' 00" S 151° 49' 30" E - 153° 20' 51" E <i>New metric chart providing improved coverage of Louisiade Archipelago.</i>	1: 150 000	9	Aus 65000	\$29.50
Aus 511	2/2/2007	Papua New Guinea - North East Coast - Sudest Island to Rossel Island 10° 56' 18" S - 11° 49' 00" S 153° 04' 38" E - 154° 36' 00" E <i>New metric chart providing improved coverage of Louisiade Archipelago.</i>	1:150 000	9	Aus 65000	\$29.50
Aus 545	2/2/2007	Papua New Guinea - New Britain - New Ireland - Rabaul to Cape Lambert 3° 28' 36" S - 4° 22' 12" S 151° 00' 30" E - 152° 24' 54" E <i>New metric chart providing improved coverage of north east coast of New Britain and west coast of New Ireland.</i>	1:150 000	10	Aus 65000	\$29.50
Aus 554	2/2/2007	Papua New Guinea - New Britain - New Ireland - Cape St George to Rabaul 3° 44' 42" S - 5° 09' 30" S 152° 02' 36" E - 152° 56' 00" E <i>New metric chart providing improved coverage of St Georges Channel.</i>	1:150 000	10	Aus 65000	\$29.50
Aus 600 INT 9036	2/2/2007	Australian Antarctic Territory - Approaches to Mawson 67° 21' 28" S - 67° 36' 30" S 62° 42' 14" E - 63° 05' 03" E Plan: Horseshoe Harbour 67° 35' 35" S - 67° 36' 30" S 62° 51' 10" E - 62° 53' 00" E <i>Includes new survey data and general updating throughout.</i>	1:25 000 1: 5 000	1	Aus 65001	\$29.50

New Edition

Chart	Published	Title and description of amendments	Scale	Folio	Index Chart	Price
Aus 777	2/2/2007	Australia - South Coast - South Australia - Winceby Island to Point Riley <i>Includes new deep water route; horizontal datum is referred to WGS 84.</i>	1: 150 000	5	Aus 65001	\$29.50
Aus 778	2/2/2007	Australia - South Coast - South Australia - Point Riley to Port Augusta Plan: Yarraville Shoal Approaches to Port Augusta Port Augusta <i>Includes new deep water route; horizontal datum is referred to WGS 84.</i>	1: 150 000 1: 50 000 1: 25 000 1: 7 500	5	Aus 65001	\$29.50

New Chart to be published shortly

Chart	Title	Scale	Expected Publication Date	Expected Stock Availability
Aus 507	Papua New Guinea - South Coast - Table Bay to Brumer Islands	1:150 000	30 March 2007	11 May 2007

For further details refer to the AHS website at www.hydro.gov.au for new edition and new chart stock arrival information.

When placing orders with a chart agent, mariners should advise whether their order pertains to the current edition or the new edition.

Chart permanently withdrawn

Chart On publication of new chart/edition

Aus 600 Aus 600

Aus 777 Aus 777

Aus 778 Aus 778

301 AUSTRALIA - Products - Amendment to Australian Notice to Mariners No 2.

AHS (A234459)

Amend Pounder Navigational Services Cairns entry to:

Pounder Navigational Services	Telephone	+61 (0)7 4036 3696	C
Cairns Chart Correcting Agent	Fax	+61 (0)7 4036 3696	
8 Red Gum Close	Email	ruth@poundernavigation.com.au	
Mount Sheridan 4868	Website	www.poundernavigation.com.au	

302* AUSTRALIA - Miscellaneous

AHS (A228506)

Aus 381 [257/2007]

Insert	magenta limits, with legend <i>Aus 510</i> in NW corner, between	11° 35'.70 S	151° 49'.50 E
		10° 54'.30 S	151° 49'.50 E
		10° 54'.30 S	152° 29'.90 E

Aus 382 [1103/2005]

Insert	magenta limits, with legend <i>Aus 510</i> in SE corner, between	11° 47'.00 S	151° 52'.00 E
		11° 47'.00 S	153° 20'.80 E
		10° 54'.30 S	153° 20'.80 E
	magenta limits, with legend <i>Aus 511</i> in SE corner, between	10° 54'.30 S	151° 52'.00 E
		11° 49'.00 S	153° 04'.60 E
		10° 56'.30 S	153° 04'.60 E
		10° 56'.30 S	154° 36'.00 E
		11° 49'.00 S	154° 36'.00 E
		11° 49'.00 S	153° 04'.60 E

Aus 395 [1153/2006]

Insert	magenta limits, with legend <i>Aus 545</i> in SW corner, between	4° 22'.2 S	152° 05'.8 E
		4° 22'.2 S	151° 00'.5 E
		4° 00'.0 S	151° 00'.5 E
	magenta line between	4° 00'.0 S	152° 02'.6 E
		5° 09'.5 S	152° 02'.6 E
		5° 09'.5 S	152° 05'.8 E
	legend <i>Aus 554</i> centred on	4° 01'.4 S	152° 03'.5 E

Aus 397 [37/2007]

Insert	magenta limits, with legend <i>Aus 545</i> in SW corner, between	3° 35'.0 S	151° 00'.5 E
		4° 22'.2 S	151° 00'.5 E
		4° 22'.2 S	152° 24'.9 E
	magenta limits, with legend <i>Aus 554</i> in NW corner, between	3° 35'.0 S	152° 24'.9 E
		5° 05'.0 S	152° 02'.6 E
		3° 44'.7 S	152° 02'.6 E
		3° 44'.7 S	152° 56'.0 E
		5° 05'.0 S	152° 56'.0 E

Delete	magenta limits with legend <i>Aus 680</i> , centred on	4° 12'.0 S	152° 15'.0 E
		4° 11'.0 S	152° 28'.0 E
		4° 46'.0 S	152° 50'.0 E
		4° 34'.0 S	152° 21'.5 E
	magenta limits with legend <i>Aus 679</i> , centred on		
	magenta limits with legend <i>Aus 668</i> , centred on		
	magenta limits with legend <i>Aus 676</i> , centred on		

Aus 539 [187/2007]

Insert	magenta legend, <i>Adjoining Chart Aus 545</i> , in S border	3° 39'.95 S	152° 12'.50 E
--------	--	-------------	---------------

Aus 568 [1102/2005]

Insert	magenta legend, <i>Adjoining Chart Aus 510</i> , in S border	11° 23'.0 S	152° 12'.5 E
	magenta legend, <i>Adjoining Chart Aus 511</i> , in E border	11° 12'.5 S	153° 21'.0 E

303* AUSTRALIA - NEW SOUTH WALES - Botany Bay - Light buoys
Sydney Ports Corporation Notice 2/2007 (A234684)

Aus 198 [1268/2006]

Insert	special spherical light buoy, <i>Fl(5)Y.20s</i> , without topmark	34° 00'.072 S	151° 10'.603 E
	special spherical light buoy, <i>Fl(5)Y.20s</i> , without topmark	33° 58'.889 S	151° 10'.253 E

Aus 199 [1268/2006]

Insert	special spherical light buoy, <i>Fl(5)Y.20s</i> , without topmark	34° 00'.072 S	151° 10'.603 E
	special spherical light buoy, <i>Fl(5)Y.20s</i> , without topmark	33° 58'.889 S	151° 10'.253 E

Delete	depth 1 ₂ m	34° 00'.06 S	151° 10'.61 E
--------	------------------------	--------------	---------------

304* AUSTRALIA - NEW SOUTH WALES - Port Jackson - Western Channel - Light buoy altered in position

Sydney Port Corporation (A235284)

Aus 200 [959/2006]

Move	starboard lateral light buoy	33° 50'.12 S	151° 15'.91 E
	to	33° 50'.118 S	151° 15'.940 E

Delete	depth 8 ₈ m	33° 50'.08 S	151° 15'.99 E
--------	------------------------	--------------	---------------

Aus 201 [901/2006]

Move	starboard lateral light buoy	33° 50'.01 S	151° 15'.99 E
	to	33° 50'.028 S	151° 16'.009 E

Delete	depth 8 ₂ m	33° 49'.99 S	151° 16'.02 E
--------	------------------------	--------------	---------------

305* AUSTRALIA - NEW SOUTH WALES - Newcastle - Hunter River - Mooring buoys established; legends

Newcastle Port Corporation (A232032)

Aus 208 [1270/2006]

Insert	lit mooring buoy, <i>Fl.Y.5s</i>	32° 53'.468 S	151° 47'.068 E
	lit mooring buoy, <i>Fl.Y.5s</i>	32° 53'.337 S	151° 47'.087 E
	lit mooring buoy, <i>Fl.Y.5s</i>	32° 53'.313 S	151° 47'.091 E
	mooring buoy	32° 53'.390 S	151° 47'.080 E
	legend <i>Carrington Wharf</i> centred on	32° 55'.14 S	151° 45'.73 E

Substitute	legend, <i>Channel Berth</i> , for Dockyard Berths	32° 55'.12 S	151° 46'.41 E
------------	--	--------------	---------------

Delete	depth 4 ₁ m	32° 53'.39 S	151° 47'.09 E
	depth 2 ₂ m	32° 53'.33 S	151° 47'.08 E
	berth desig 4	32° 55'.12 S	151° 46'.44 E
	depth 1m	32° 53'.46 S	151° 47'.06 E

306* AUSTRALIA - QUEENSLAND - Gladstone - Pilot boarding places

Maritime Safety Queensland Notice 164/2007 (A234620 and A234619)

Aus 246 [1142/2006]

Insert	pilot boarding place, with legend <i>Alpha</i>	23° 51'.0 S	151° 31'.5 E
	pilot boarding place, with legend <i>Charlie</i>	23° 53'.0 S	151° 33'.0 E
	pilot boarding place, with legend <i>Delta</i>	23° 55'.0 S	151° 31'.0 E

Substitute	legend, <i>Bravo</i> , for legend Gladstone	23° 51'.9 S	151° 32'.5 E
------------	---	-------------	--------------

Aus 366 [84/2007]

Substitute	legend, <i>Gladstone Bravo</i> , for legend Gladstone	23° 52'.8 S	151° 33'.5 E
------------	---	-------------	--------------

Aus 819 [260/2007]

Insert	pilot boarding place, with legend <i>Alpha</i>	23° 51'.0 S	151° 31'.5 E
	pilot boarding place, with legend <i>Charlie</i>	23° 53'.0 S	151° 33'.0 E
	pilot boarding place, with legend <i>Delta</i>	23° 55'.0 S	151° 31'.0 E

Substitute	legend, <i>Bravo</i> , for legend Gladstone	23° 51'.9 S	151° 33'.4 E
------------	---	-------------	--------------

307* AUSTRALIA - QUEENSLAND - Olinda Entrance to Fly Entrance - Depths
LADS (mA109774, mA115072 and mA115336)

Aus 377 [257/2007]

Delete	legend (see Note) centred on	10° 23'.5 S	143° 58'.0 E
	legend (see Note) centred on	10° 01'.0 S	144° 08'.0 E
	note ENTRANCES - GREAT BARRIER REEF	10° 44'.0 S	146° 05'.0 E

Aus 837 [180/2007]

Insert	accompanying block	11° 11'.0 S	144° 05'.0 E
	accompanying block	10° 00'.0 S	144° 05'.0 E

Delete	note ENTRANCES - GREAT BARRIER REEF	11° 03'.0 S	143° 51'.0 E
--------	-------------------------------------	-------------	--------------

308* AUSTRALIA - QUEENSLAND - Cumberland Passage to Underdown Island - Depths
Tenix LADs Corporation (A224789)

Aus 376 [266/2007]

Insert	accompanying block	9° 45'.0 S	143° 40'.0 E
--------	------------------------------------	------------	--------------

Aus 377 [307/2007]

Insert	accompanying block	9° 45'.0 S	143° 40'.0 E
--------	------------------------------------	------------	--------------

309* PAPUA NEW GUINEA - Bristow Island - Depth southeastward
Mapping and Hydrographic Surveys (MH108711) (A235647)

Aus 376 [308/2007]

Insert	depth, 4 _g m, enclosed by contour	9° 09'.74 S	143° 19'.11 E
--------	--	-------------	---------------

Delete	depth 6 ₅ m enclosing contour and legend Rep (1997)	9° 09'.7 S	143° 18'.9 E
--------	--	------------	--------------

Aus 377 [308/2007]

Insert	depth, 4 _g m, enclosed by contour	9° 09'.74 S	143° 19'.11 E
--------	--	-------------	---------------

Delete	depth 6 ₅ m enclosing contour and legend Rep (1997)	9° 09'.7 S	143° 18'.9 E
--------	--	------------	--------------

Aus 378 [877/2003]

Insert	depth, 4 _g m, enclosed by contour	9° 09'.93 S	143° 19'.05 E
--------	--	-------------	---------------

Aus 840 [189/2007]

Insert	depth, 4 _g m, enclosed by contour	9° 09'.74 S	143° 19'.11 E
--------	--	-------------	---------------

Delete	depth 6 ₅ m enclosing contour and legend Rep (1997)	9° 09'.7 S	143° 18'.9 E
--------	--	------------	--------------

310* PAPUA NEW GUINEA - Dagagota Reef - Depth
HMAS *Paluma* and Auscaost 43/2007 (A235263 and A235261)

Aus 376 [309/2007]

Insert	depth, 2 _g m, enclosed by contour	9° 15'.24 S	143° 17'.96 E
--------	--	-------------	---------------

Aus 377 [309/2007]

Insert	depth, 2 _g m, enclosed by contour	9° 15'.24 S	143° 17'.96 E
--------	--	-------------	---------------

Aus 840 [309/2007]

Insert	depth, 2 _g m, enclosed by contour	9° 15'.24 S	143° 17'.96 E
--------	--	-------------	---------------

311* AUSTRALIA - TORRES STRAIT - Hocking Patches - Depths
HMAS' *Shepparton* and *Benalla* HI 417 (A229280)

Aus 700 [38/2007]

Insert	accompanying block	10° 37'.0 S	141° 35'.0 E
--------	------------------------------------	-------------	--------------

312* AUSTRALIA - NORTHERN TERRITORY - Darwin - Middle Pass - Deep water channel; light buoys

Darwin Port Corporation Notices 7 and 8/2007 (A235601, A231357 and 232421)

Aus 26 [1222/2006]

Insert accompanying block 12° 21'.0 S 130° 43'.0 E

AX 72026 [1222/2006]

Insert accompanying block 12° 21'.0 S 130° 43'.0 E

313* AUSTRALIA - NORTHERN TERRITORY - Darwin - Light buoys altered; mooring buoy

Darwin Port Corp Notices 31/2006, 2 and 5/2007 (A224366, A224517, A229433)

Aus 26 [312/2007]

Insert lit mooring buoy, *Fl.2.5s* 12° 25'.102 S 130° 47'.733 E

Amend light buoy to *Iso.R.2s* 12° 25'.05 S 130° 46'.97 E
light buoy to *Iso.R.2s* 12° 28'.00 S 130° 49'.51 E

Aus 28 (plan, Port Darwin) [1222/2006]

Amend light buoy to *Iso.R.2s* 12° 28'.02 S 130° 49'.51 E

AX 72026 [312/2007]

Insert lit mooring buoy, *Fl.2.5s* 12° 25'.102 S 130° 47'.733 E

Amend light buoy to *Iso.R.2s* 12° 25'.05 S 130° 46'.97 E
light buoy to *Iso.R.2s* 12° 28'.00 S 130° 49'.51 E

314* AUSTRALIA - SOUTH AUSTRALIA - South Page - Racon established

Former Notice - 250(P)/2007 is cancelled

AMSA ATH 07/2007 (A235049)

Aus 345 [213/2007]

Insert *Racon (O)* at light 35° 46'.6 S 138° 17'.5 E

Aus 346 [213/2007]

Insert *Racon (O)* at light 35° 46'.7 S 138° 17'.5 E

Aus 347 [213/2007]

Insert *Racon (O)* at light 35° 46'.6 S 138° 17'.5 E

Aus 444 [213/2007]

Insert *Racon (O)* at light 35° 47'.0 S 138° 17'.5 E

Aus 780 [213/2007]

Insert *Racon (O)* at light 35° 46'.8 S 138° 17'.5 E

315* AUSTRALIA - TASMANIA - Huon River - Hospital Bay - Light beacon altered; mooring buoys removed

Marine and Safety Tasmania (A231933)

Aus 174 (plan, Port Huon) [1036/2006]

Substitute beacon without top mark for light beacon 43° 09'.71 S 146° 58'.04 E

Delete No 4 mooring buoy 43° 09'.93 S 146° 58'.13 E
No 6 mooring buoy 43° 09'.96 S 146° 58'.19 E
legend APM Jetty 43° 09'.89 S 146° 58'.15 E

316 AUSTRALIA - Products - Cumulative List of Australian Notices to Mariners - April 2007

AHS (A213380)

The Cumulative List of Australian Notices to Mariners - April 2007 is issued as an [accompanying supplement](#). It lists all permanent notices affecting charts in the Area of Australian Charting Responsibility published in the preceding two years since Edition 7 of 2005 dated 1 April 2005, and includes Edition 7 of 2007 dated 13 April 2007.

317(T)/2007 AUSTRALIA - QUEENSLAND - Bribie Island - Obstruction cleared; light buoy withdrawn.
Former Notice - 1237(T)/2006 is cancelled
 Maritime Safety Queensland Notice 179/2007 (A236316).

Cancel this notice on receipt

Chart formerly affected - Aus 235 - Aus 814

318(T)/2007 AUSTRALIA - QUEENSLAND - Brisbane River - Quarries Reach to Parker Island Reach - Harbour works

Maritime Safety Queensland Notice 190(T)/2007 (A237697)

Harbour works are in progress for the Gateway Bridge development. A silt curtain exists from the northern bank of the river to position 27° 26'.62 S 153° 06'.01 E.

Mariners are advised to navigate with caution in the area.

Chart temporarily affected - Aus 238

319(T)/2007 AUSTRALIA - QUEENSLAND - Victor Island to Round Top Island - Scientific instruments recovered

Former Notice - 400(T)/2006 is cancelled
 Maritime Safety Queensland Notice 188/2007 (A237490)

Cancel this notice on receipt

Chart formerly affected - Aus 249 - Aus 823

320(T)/2007 AUSTRALIA - QUEENSLAND - Mackay - Harbour works completed

Former Notice - 60(T)/2007 is cancelled
 Maritime Safety Queensland Notice 186/2007 (A237488)

Cancel this notice on receipt

Chart formerly affected - Aus 249 - Aus 250

321(T)/2007 AUSTRALIA - QUEENSLAND - Pioneer Bay - Muddy Bay - Scientific instruments

Date - Until 31 December 2007
 Maritime Safety Queensland Notice 173(T)/2007 (A235251)

Scientific instruments, marked by unlit white buoys exist in positions:

20° 16'.121 S 148° 43'.486 E
 20° 16'.278 S 148° 43'.928 E
 20° 16'.115 S 148° 43'.803 E
 20° 15'.753 S 148° 43'.966 E
 20° 15'.760 S 148° 43'.660 E
 20° 15'.489 S 148° 43'.655 E

Mariners are advised to navigate with caution in the area.

Chart temporarily affected - Aus 253 - Aus 268

322(T)/2007 AUSTRALIA - QUEENSLAND - Daintree River - Light buoy replaced in position

Former Notice - 1054(T)/2006 is cancelled
 Maritime Safety Queensland Notice 176/2007 (A236317)

Cancel this notice on receipt

Chart formerly affected - Aus 831

323(T)/2007 PAPUA NEW GUINEA - Loa Islet - Light unlit
PNG NMSA 07-109 (A237305)

The light K3450.5 (11° 26'.98 S 154° 23'.92 E (WGS 84 datum)) is unlit.

Chart temporarily affected - Aus 382 - Aus 511 - Aus 4060 (INT 60) - Aus 4604 (INT 604) - Aus 4621 (INT 621)

324(T)/2007 PAPUA NEW GUINEA - Cape Orford - Light restored to normal
Former Notice - 114(T)/2007 is cancelled
PNG NMSA Notice 07-109 (A237305)

Cancel this notice on receipt

Chart formerly affected - Aus 461 - Aus 4622 (INT 622)

325(T)/2007 PAPUA NEW GUINEA - Cape Gazelle - Light unlit
PNG NMSA Notice 07-109 (A237305)

The light K3504 (4° 19'.37 S 152° 23'.78 E (WGS 84 datum)) is unlit.

Chart temporarily affected - Aus 397 - Aus 461 - Aus 545 - Aus 554 - Aus 680

326(T)/2007 PAPUA NEW GUINEA - Steffen Strait to Nusaum Island - Lights restored to normal
Former Notice - 1252(T)/2006 is cancelled
PNG NMSA Notice 07-109 (A237305)

Cancel this notice on receipt

Chart formerly affected - Aus 666

327(T)/2007 PAPUA NEW GUINEA - Biialla - Lights restored to normal
Former Notice - 65(T)/2007 is cancelled
PNG NMSA Notice 07-109 (A237305)

Cancel this notice on receipt

Chart formerly affected - Aus 547

328(P)/2007 AUSTRALIA - NORTHERN TERRITORY - North East Bromby Islet - Light buoy to be established
Date - On or about 28 April 2007
AMSA ATH 2007/17 (A236652)

An east cardinal pillar light buoy, *Q(3)10s*, with topmark, will be established in position 11° 48'.00 S 136° 43'.50 E.

Chart which will be affected - Aus 715

329(T)/2007 AUSTRALIA - NORTHERN TERRITORY - Darwin - Light buoys established
Former Notice - 203(P)/2007 is cancelled
Darwin Port Corp Notice NW 2007/07 (A231357)

Note: Notice to Mariners 312/2007 refers.

Cancel this notice on receipt

Chart formerly affected - Aus 26 - AX 72026

330(T)/2007 AUSTRALIA - NORTHERN TERRITORY - Darwin - Light buoy replaced in position

*Former Notice - 119(T)/2007 is cancelled
Darwin Port Corp Notice NW 2007/15 (A235460)*

Cancel this notice on receipt

Chart formerly affected - Aus 26 - Aus 722 - AX 72026 - AX 72722

331(P)/2007 AUSTRALIA - WESTERN AUSTRALIA - Napier Broome Bay - King Harman Point - Rock
MV *Fourcroy* (A225215)

A rock which covers and uncovers is reported to exist in position 14° 08'.50 S 126° 32'.80 E.

Note: Due to database problems, a permanent notice cannot be issued. This will be rectified in due course.

Chart which will be affected - Aus 727

332(P)/2007 AUSTRALIA - WESTERN AUSTRALIA - Vansittart Bay - Jar Island - Rock
MV *Montoro* (A236327)

A dangerous rock is reported to exist in position 14° 09'.49 S 126° 12'.37 E.

Note: Due to database problems, a permanent notice cannot be issued. This will be rectified in due course.

Chart which will be affected - Aus 727 - Aus 728

333(T)/2007 AUSTRALIA - WESTERN AUSTRALIA - Onslow - Scientific instruments westward recovered

*Former Notice - 335(T)/2006 is cancelled
MetOcean (A236762)*

Cancel this notice on receipt

Chart formerly affected - Aus 64 - Aus 743

334(T)/2007 AUSTRALIA - WESTERN AUSTRALIA - Fremantle - Depth information

*Former Notice - 644(T)/2004 is cancelled
Fremantle Ports Notice 13(T)/2007 (A237485)*

Available depths as at 26 March 2007:

<i>Berth</i>	<i>Metres</i>
* No 1	11.1
* No 2	11.2
No 4	12.7
* No 5	12.5
* No 6	12.4
* No 7	12.3
* No 8	12.1
No 9	12.8
* No 10	10.3
* No 11	10.3
No 12	10.8
* D	11.2
* E	10.7
* F	11.2
* G	10.6
* H	10.5

* Indicates new or revised entry.

Note: Victoria Quay berths A, B, and C are no longer used for commercial operations.

Chart temporarily affected - Aus 113

335(T)/2007 SOUTHERN OCEAN - Scientific instrument

Former Notices - 949(P)/2006, 251(T)/2007 are cancelled
Bureau of Meteorology (A237654, A237655)

A scientific instrument, DART (Deep-Ocean Assessment of Tsunami) buoy will be established in position 46° 56' S 160° 28' E on 16 April 2007.

Chart temporarily affected - Aus 4060 (INT 60) - Aus 4074 (INT 74) - Aus 4601 (INT 601)

336(T)/2007 AUSTRALIA - TEMPORARY AND PRELIMINARY NOTICES

Former Notice - 76(T)/2007 is cancelled
AHS (A230251)

<i>Notice</i>	<i>Charts affected</i>	<i>Locality and Subject</i>
		BASS STRAIT
75/2007	Aus357A.....	Light buoy off station.
		CORAL SEA
		<i>Lihou Reef</i>
653/2001	Aus614	Shoals
		<i>Willis Islets</i>
663/2006	Aus617-4620-4621	Light unlit
		NEW SOUTH WALES
		<i>Batemans Bay</i>
317/2006	Aus191	Shoaling; buoy
		<i>Brisbane Water</i>
813/2006	Aus216	Scientific instrument eastwards
		<i>Broken Bay</i>
292/2005	Aus361-423-424-809.....	Fish aggregating devices westward
742/2005	Aus197-204-215-AX70197	Barrenjoey Head- Scientific instrument northwards
		<i>Eden to Ballina</i>
135/2006	Aus197-806-808-809-813- AX70197-70808	Light buoys
		<i>Green Cape to Lennox Head</i>
522/2006	Aus197-806-807-808-809- 810-811-812-813-AX70197- 70808	Scientific instruments
		<i>Harrington Inlet</i>
523/2006	Aus810	Obstruction
		<i>Jervis Bay</i>
453/2006	Aus193-AX60193-67192- 70193	Light unlit
930/2006	Aus193-AX60193-70193.....	Light buoy off station
		<i>Newcastle</i>
1228/2006	Aus207-208.....	Scientific instrument
228/2007	Aus207	Scientific instrument
229/2007	Aus207-208.....	Depth information
		<i>Port Jackson</i>
1043/2005	Aus202-203.....	Light buoys
454/2006	Aus202	Gore Cove- Shoaling
47/2007	Aus200-201-AX63200.....	West Channel- Light beacon destroyed; light buoy.
		<i>Port Kembla</i>
739/2005	Aus195	Depth information
99/2007	Aus195	Light buoys withdrawn.
100/2007	Aus195	Wave energy barge; light buoys to be established.
227/2007	Aus195-808.....	Dredging operations; dumping; survey operations
		NORTHERN TERRITORY
		<i>Bing Bong</i>
914/2005	Aus13	Dredging operations

336(T)/2007 (Continued)

<i>Notice</i>	<i>Charts affected</i>	<i>Locality and Subject</i>
241/2007	Aus18-308-721	<i>Cape Croker to Vashon Head</i> Scientific instruments
1062/2006	Aus26-28.....	<i>Darwin</i> Shoaling
1134/2006	Aus26-28.....	Depth information
242/2007	Aus26-28-AX72026.....	Obstruction; light buoys
411/2006	Aus15	<i>Gove</i> Light buoy off station
1169/2006	Aus15	Light buoys off station
672/2006	Aus4720.....	<i>Groote Eylandt</i> Scientific instrument eastwards
882/2006	Aus20-309-722-AX70722-..... 72722	<i>Melville Island</i> Reef delineation
328/2007	Aus715.....	<i>North East Bromby Islet</i> Light buoy to be established
950/2004	Aus309-311-315	<i>Troubadour Shoals</i> Scientific instruments
1303/2006	Aus306-715-4720-4721	<i>Yirrkala</i> Rock
QUEENSLAND		
63/2007	Aus268	<i>Abel Point</i> Dredging operations.
54/2007	Aus818	<i>Agnes Water</i> Wreck southeastwards.
240/2007	Aus4	<i>Albatross Bay</i> Scientific instrument
108/2007	Aus365	<i>Arkwright Point</i> Scientific instrument.
470/2006	Aus830	<i>Arlington Reef</i> Buoy westwards withdrawn
1130/2006	Aus281-374-834-4620.....	<i>Bow Reef</i> Light range reduced
816/2006	Aus236-237.....	<i>Brisbane River</i> Harbour works
935/2006	Aus237	Harbour works
1089/2006	Aus237-238.....	Depth information
1090/2006	Aus238	Lights altered
1121/2006	Aus237-238.....	Quarantine Flats- Harbour works
1234/2006	Aus238	Shafston Reach- Harbour works.
1286/2006	Aus237	Pelican Banks Reach- Harbour works.
197/2007	Aus237	Lytton Rocks Reach- Harbour works
318/2007	Aus238	Quarries Reach to Parker Island Reach- Harbour works
271/2006	Aus242-243.....	<i>Bundaberg</i> Depth information
278/2007	Aus242	Dredging operations
391/2005	Aus264	<i>Cairns</i> Trinity Inlet- Wreck; light buoy
233/2006	Aus263-264.....	Wreck; light buoy
467/2006	Aus262-263-264-830- AX63262	Depth information
112/2007	Aus256	<i>Cape Cleveland</i> Scientific instrument
281/2007	Aus371-827.....	Wreck northeastward

336(T)/2007 (Continued)

<i>Notice</i>	<i>Charts affected</i>	<i>Locality and Subject</i>
280/2007	Aus251-252.....	<i>Cape Hillsborough to Cape Conway</i> Scientific instruments
659/2006	Aus372-828.....	<i>Chicken Reef and Pith Reef</i> Scientific instruments
878/2006	Aus270.....	<i>Cooktown</i> Shoaling
1197/2006	Aus270.....	Depth information.
162/2007	Aus270.....	Light beacon destroyed; light buoy.
283/2007	Aus270.....	Buoyage repositioned
113/2007	Aus830.....	<i>Double Island</i> Scientific instrument.
275/2006	Aus246.....	<i>Gladstone</i> Shoaling
716/2006	Aus244-245-246.....	Depth information
764/2006	Aus244-245.....	Harbour works
1239/2006	Aus244-245-246.....	Navaid upgrade
152/2007	Aus245-246.....	Auckland Channel- Intermediate lead.
234/2007	Aus244-245.....	Clinton Channel- Harbour works
651/2006	Aus814.....	<i>Gold Coast Seaway</i> Shoaling
402/2006	Aus371.....	<i>Gould Reef</i> Wreck
214/2005	Aus241-817.....	<i>Great Sandy Strait</i> Light buoys
284/2007	Aus832.....	<i>Gunga Shoal</i> Light buoy to be established
1166/2006	Aus827-828.....	<i>Halifax Bay</i> Wreck
464/2006	Aus249-250.....	<i>Hay Point</i> Pilot boarding place
57/2007	Aus249-250.....	Depth information.
59/2007	Aus249-250.....	Harbour works.
111/2007	Aus249-250-251.....	<i>Hay Point to Bailey Islet</i> Scientific instruments.
1293/2006	Aus366-426-819.....	<i>Heron Island</i> Scientific instruments.
533/2005	Aus6.....	<i>Karumba</i> Light buoy
1302/2006	Aus6.....	Depth information.
765/2006	Aus247.....	<i>Keppel Bay</i> Wreck
818/2006	Aus366-367-820.....	<i>Keppel Isles</i> Wreck eastwards
1052/2006	Aus252.....	<i>Laguna Quays</i> Reduced depth
109/2007	Aus247.....	<i>Lisa Jane Shoals</i> Scientific instrument.
1002/2006	Aus373-830-831.....	<i>Low Islets</i> Sector light trial extended
146/2006	Aus250.....	<i>Mackay</i> Depth information
239/2007	Aus249-250.....	Harbour works

336(T)/2007 (Continued)

<i>Notice</i>	<i>Charts affected</i>	<i>Locality and Subject</i>
233/2007	Aus235	<i>Mooloolaba</i> Harbour works
870/2006	Aus235-236.....	<i>Moreton Bay</i> Spitfire Channel- Light buoys
1162/2006	Aus236	Light buoy established
1191/2006	Aus237	Outer Bar Reach- Shoaling
1231/2006	Aus235-236-237	North West Channel, Spitfire Channel and Inner Bar- Dredging operations
1235/2006	Aus236	Scarborough- Shoaling
51/2007	Aus235-236.....	Skirmish Passage- Wreck; light buoy.
102/2007	Aus235-236.....	Spitfire Channel- Light sector partially undefined.
103/2007	Aus236	North Stradbroke Island- Dunwich- Lead unlit.
104/2007	Aus236	Lamb Island- Obstruction; light buoy; sign.
105/2007	Aus236	Karragarra Island- Obstruction; light buoy; sign.
106/2007	Aus236	Redcliffe- Scientific instrument.
149/2007	Aus236	Scarborough- Dredging operations.
196/2007	Aus236	Russell Island- Harbour works
232/2007	Aus236	Scarborough- Dredging operations
230/2007	Aus235-236-237-238-814	<i>Moreton Bay and Brisbane River</i> Depth information and keel clearances
825/2006	Aus258	<i>Mourilyan</i> Depth information
658/2006	Aus827-828.....	<i>Orpheus Island</i> Radio mast
1244/2006	Aus268	<i>Pioneer Bay</i> Harbour works; light buoys.
321/2007	Aus253-268.....	Muddy Bay- Scientific instruments
101/2007	Aus813-814.....	<i>Point Danger to Point Lookout</i> Scientific instruments.
767/2006	Aus247	<i>Port Alma</i> Leading light; light buoys
235/2007	Aus247	Depth information
64/2007	Aus270	<i>Port Douglas</i> Depth information.
1122/2006	Aus235-236.....	<i>Pumicestone Passage</i> Scientific instrument
853/2003	Aus294	<i>Red Island Point</i> Shoaling
201/2007	Aus366-818.....	<i>Round Hill Head</i> Wreck northeastwards
237/2007	Aus260-367-822-AX60260	<i>Shoalwater Bay</i> Marine danger area eastwards
671/2006	Aus701	<i>Skardon River</i> Shoaling
281/2006	Aus256-257.....	<i>Townsville</i> Wreck
1195/2006	Aus257	Dredging operations.
1196/2006	Aus257	Scientific instruments.
160/2007	Aus256-257.....	Depth information.
282/2007	Aus257	Dredging operations

336(T)/2007 (Continued)

<i>Notice</i>	<i>Charts affected</i>	<i>Locality and Subject</i>
		<i>Weipa</i>
946/2006	Aus4	Depth information
66/2007	Aus4	Light beacon destroyed; light buoy.
		<i>Whitsunday Islands</i>
62/2007	Aus252-253-254-824-825	Cable laying activities.
		SOUTH AUSTRALIA
		<i>Barker Inlet</i>
484/2006	Aus780-781	Shoaling
249/2007	Aus781	Beacon destroyed
		<i>Coffin Bay</i>
1171/2006	Aus121	Light beacon unlit
		<i>Franklin Harbour</i>
482/2006	Aus777	Beacon destroyed
		<i>Glenelg</i>
490/2002	Aus125-781	Restricted areas; light buoys
		<i>Margaret Brock Reef</i>
452/2002	Aus127	Structure
		<i>Port Adelaide</i>
239/2006	Aus137	Depth information
240/2006	Aus137	Shoaling
206/2007	Aus237	Bridge construction; exclusion zones; temporary light buoys
		<i>Port Lincoln</i>
372/2006	Aus134	Light beacon destroyed
		<i>Semaphore Anchorage</i>
70/2007	Aus137	North Haven Marina-Shoaling.
		<i>Smoky Bay</i>
721/2004	Aus120	Breakwater; lights
		<i>Stansbury</i>
1012/2005	Aus780-781	Beacon destroyed
		<i>Thevenard</i>
1170/2006	Aus120	Light beacon destroyed, temporary light
		<i>Thorny Passage</i>
1137/2006	Aus134-776	Scientific instrument
		<i>Tippara Reef to Yarraville Shoal</i>
120/2007	Aus777-778	Nav aids.
		<i>Venus Bay</i>
1069/2006	Aus121	Beacon destroyed
1136/2006	Aus121	Beacon destroyed
		<i>Wallaroo</i>
1172/2006	Aus777	Depth information
		<i>Yarraville Shoal</i>
815/2002	Aus344-444-778	Light beacon destroyed; light buoy
		TASMANIA
		<i>Burnie</i>
781/2006	Aus163	Depth information
		<i>D'Entrecasteaux Channel</i>
905/2004	Aus173	Spat collection; light buoys
		<i>Derwent River</i>
122/2007	Aus172	New Town Bay- Obstructions.

336(T)/2007 (Continued)

<i>Notice</i>	<i>Charts affected</i>	<i>Locality and Subject</i>
780/2006	Aus164	<i>Devonport</i> Depth information
922/2005	Aus179-800.....	<i>Furneaux Group</i> Shoaling
1204/2006	Aus169	<i>Georges Bay</i> Shoaling.
296/2007	Aus169	Beacon destroyed
1126/2005	Aus172	<i>Hobart</i> Depth information
1307/2006	Aus172	Drilling operations.
89/2003	Aus173	<i>Huon River</i> Wreck; buoy
1129/2005	Aus169-171.....	<i>Marion Narrows</i> Beacon destroyed
1308/2006	Aus169-171.....	Light beacon altered.
906/2004	Aus171	<i>Norfolk Bay</i> Spat collection; light buoys
270/2005	Aus176	<i>Port Davey</i> Horizontal datum anomaly
264/2002	Aus170	<i>Spring Bay</i> Depth information
1205/2006	Aus168	<i>Tamar River</i> Reduced clearance
1261/2006	Aus168	Light buoy off station.
892/2006	Aus795	<i>The Lanterns to Deep Glen Bay</i> Scientific instruments
		TIMOR SEA
67/2007	Aus310-4721.....	<i>Lyndoch Bank</i> Seismic survey westwards.
476/2006	Aus312	<i>Sahul Banks</i> Scientific instruments
		TORRES STRAIT
687/2001	Aus293-299.....	<i>Thursday Island</i> Depth information
1083/2005	Aus293-299.....	Front lead temporarily reinstated
		VICTORIA
1002/2004	Aus181-182.....	<i>Barry Beach</i> Shoaling
673/2005	Aus150-349-422-487-788-801	<i>Cape Schanck</i> DGPS range reduced
957/2004	Aus143-144-158	<i>Port Phillip</i> Shoal
966/2004	Aus144-158.....	Sorrento Channel- Beacon destroyed; buoy
351/2005	Aus143-144-158	South Channel- Shoaling
1090/2005	Aus143-157.....	Corio Bay- Light beacon; light buoy
242/2006	Aus154	Victoria Dock- Harbour works
421/2006	Aus154	Port Melbourne Channel- Station Pier- Shoaling
894/2006	Aus143	Daveys Bay- Harbour works
950/2006	Aus157	Point Richards Channel- Light beacon damaged
951/2006	Aus157	Hopetoun Channel- Light beacon destroyed; light buoy
952/2006	Aus157	Geelong- Depth information; shoal
1013/2006	Aus143-144-158	Sorrento Channel- Light beacon destroyed; light buoy
1072/2006	Aus143-154-155-158.....	Transit only zone to be established
1073/2006	Aus154-155.....	Beacons to replace buoys
1174/2006	Aus157	Navaid replacement

336(T)/2007 (Continued)

<i>Notice</i>	<i>Charts affected</i>	<i>Locality and Subject</i>
1262/2006	Aus154	Light beacon destroyed; light beacon
72/2007	Aus143-154-158	Pinnacle Channel to Williamstown Channel- Scientific instruments.
297/2007	Aus154	Port Melbourne- Depth information
		<i>Port Welshpool</i>
72/2006	Aus181-182.....	Lewis Channel- Beacon destroyed
		<i>Western Port</i>
228/2005	Aus150-151.....	Shoreham- Beacon destroyed
246/2006	Aus150-151.....	Tea Tree Point- Shoaling
679/2006	Aus150-151.....	Navaid replacement
74/2007	Aus150.....	Light beacons; obstruction.
253/2007	Aus150.....	Harbour works; navaid relocation
		WESTERN AUSTRALIA
		<i>Airlie Island</i>
291/2007	Aus63-64-328-743.....	Light range to be altered
		<i>Albany</i>
729/2006	Aus109.....	Light beacon; light buoy
		<i>Barrow Island</i>
1008/2006	Aus62-742.....	Scientific instruments eastwards
		<i>Champagne Island</i>
244/2007	Aus320-730.....	Scientific instruments
		<i>Cockburn Sound</i>
1089/2005	Aus111.....	Obstruction
248/2007	Aus112-114-117-AX63112-... 70117	Obstructions; light buoy; closed anchorages
		<i>Dampier</i>
438/2005	Aus58-59.....	Light temporarily discontinued
477/2006	Aus57-58-59.....	Depth information
886/2006	Aus57-58-59.....	Dredging operations; harbour works
1007/2006	Aus57-58-59.....	Drilling operations
1066/2006	Aus58-59.....	Artificial reef
170/2007	Aus57-58-59.....	Obstruction.
171/2007	Aus58-59.....	Light buoys to be established.
172/2007	Aus58-59.....	Dredging operations.
		<i>Dampier Archipelago</i>
523/2004	Aus327-415.....	Scientific instruments northwestwards
		<i>Esperance</i>
857/2004	Aus119.....	Light buoy
779/2006	Aus119.....	Scientific instrument
		<i>Fremantle</i>
175/2007	Aus112-113-AX63112.....	Obstruction; submarine pipeline; light buoys.
295/2007	Aus113.....	Light buoy repositioned
334/2007	Aus113.....	Depth information
		<i>Geographe Bay</i>
1260/2006	Aus755-756.....	Scientific instrument.
		<i>Geraldton</i>
174/2007	Aus81.....	Harbour works.
		<i>Glomar Shoal</i>
1256/2006	Aus327-741.....	Scientific instruments.
		<i>Koolan Island</i>
539/2006	Aus40.....	Mooring; barge
		<i>Kwinana</i>
757/2005	Aus114-117-AX70117.....	Harbour works; buoys; pipeline
		<i>Mandurah</i>
103/2006	Aus116-755.....	Light beacon to be established; light buoy

336(T)/2007 (Continued)

Notice	Charts affected	Locality and Subject
		<i>Maret Islands</i>
243/2007	Aus320-729.....	Scientific instruments
		<i>Mary Anne Island</i>
1306/2006	Aus63-328-743	Light re-established; characteristics altered.
		<i>Montebello Islands</i>
173/2007	Aus328	Scientific instrument northwestwards.
		<i>Napier Broome Bay</i>
331/2007	Aus727	Rock
		<i>North Island</i>
293/2007	Aus332-416-417-751.....	Light range to be altered; racon to be established
		<i>North West Cape</i>
888/2006	Aus744	Scientific instrument northwards
247/2007	Aus329-415-416	Wells northward
		<i>Oakagee River</i>
1104/2006	Aus751	Scientific instruments westward
		<i>Pelsaert Island</i>
294/2007	Aus332-333-416-417-751- 752	Light range to be altered; racon to be established
		<i>Port Hedland</i>
831/2006	Aus54	Harbour works; restricted areas
1065/2006	Aus54	Light buoys temporarily withdrawn
1103/2006	Aus54	Lights altered
245/2007	Aus53-739-740	Light beacon replacement
246/2007	Aus54	Depth information
		<i>Rankin Bank</i>
887/2006	Aus327-328-415	Production wells; pipeline
		<i>Scott Reef to Wildcat Reefs</i>
1304/2006	Aus43-320-322	Scientific instruments.
		<i>Shoal Point</i>
292/2007	Aus332-416-417	Light range to be altered
		<i>Timor Sea</i>
1102/2006	Aus43-322.....	Scientific instruments southward
		<i>Vansittart Bay</i>
332/2007	Aus727-728.....	Jar Island- Rock
		<i>Wilson Point</i>
1255/2006	Aus320-323-730-732.....	Scientific instruments.
		EAST TIMOR
		<i>Dili</i>
727/2006	Aus901	Light unlit
		<i>Pulau Jaco</i>
309/2005	Aus311-312-313-4721.....	Light unlit
		INDIAN OCEAN
1135/2006	Aus4071	Scientific instruments
800/2005	Aus607	Light beacon
		<i>Sumatera</i>
68/2007	Aus4070-4071.....	Scientific instruments westward.
		PACIFIC OCEAN
1133/2006	Aus4060-4604.....	Scientific instruments
		PAPUA NEW GUINEA
809/2003	Lights
285/2006	Aus399-462-4604-4622.....	Scientific instruments northeastwards

336(T)/2007 (Continued)

<i>Notice</i>	<i>Charts affected</i>	<i>Locality and Subject</i>
893/2004	Aus399-461-683-684-4060- .. 4604-4622	<i>Bougainville Island</i> Lights destroyed
1003/2006	Aus376-377-378-840-4620- .. 4720	<i>Bristow Island</i> Light unlit
325/2007	Aus397-461-545-554-680	<i>Cape Gazelle</i> Light unlit
341/2005	Aus384-519-520	<i>Cape Nelson</i> Lights unlit
667/2006	Aus384-520-521-4620-4622 ..	<i>Cape Nelson to Cape Ward Hunt</i> Lights unlit
116/2007	Aus397-461-680-4622.....	<i>Cape Tavui</i> Light unlit.
287/2007	Aus381-567-625-629.....	<i>China Strait</i> Light unlit
286/2007	Aus379-505-621	<i>Idihi Islet to Haidana Island</i> Lights unlit
964/2005	Aus523-4622.....	<i>Lae</i> Light unlit
471/2006	Aus523	Wreck
323/2007	Aus382-511-4060-4604-4621	<i>Loa Islet</i> Light unlit
1253/2006	Aus387	<i>Long Island</i> Light unlit.
967/2005	Aus646	<i>Madang</i> Horizontal datum anomaly
117/2007	Aus646	Leading lights unlit
1057/2006	Aus381-628-629-630.....	<i>Nuakata Passage</i> Lights unlit
892/2004	Aus386-523-654-4603-4604- 4622	<i>Nussing Island to Fortification Point</i> Lights unlit
665/2006	Aus379-380-505-4620.....	<i>Port Moresby</i> Fish aggregation device southwards
666/2006	Aus380-506-4620-4621	<i>Rothery Passage</i> Light beacon destroyed
1249/2006	Aus654	<i>Round Hill Anchorage</i> Beacon destroyed
1167/2006	Aus651	<i>Wewak Harbour</i> Lights unlit
335/2007	Aus4060-4074-4601	SOUTHERN OCEAN Scientific instrument

AMENDMENTS TO ADMIRALTY LIST OF LIGHT AND FOG SIGNALS VOLUME K 2007/08

Edition No 7 dated 13 April 2007

Last Amendment: Edition No 6 dated 30 March 2007

K1559-9	Tg Watu Tembatu (I)	4 05-50 S 123 15-50 E	Fl(4) W 10s	65	20	White metal framework (fl 0-25, ec 2) x 3, fl 0-25, ec 3 structure 40		
					*			*
K2114	South Page (COM)	35 46-65 S 138 17-48 E	Fl W 10s	27	19	Metal framework tower fl 0-1 on white GRP hut 7		
-	-	..	Iso R 2s	26	10	..	Vis 105°-120°(15°) over Yatala Shoal	
-	-	..	Racon	ALRS Vol 2 Station 87690	
*	*	*	*	*	*	*		*
K2464-5	- EASTERN ENTRANCE. Newhaven Marina. Ldg Lts 307-4°. Front	38 30-70 S 145 21-70 E	Q W		Replaced by F Bu 2M close SE (T) 2007
								*
K2464-51	- EASTERN ENTRANCE. Newhaven Marina. Ldg Lts 307-4°. Rear. 30m from front	38 30-70 S 145 21-70 E	Oc W 5s		Replaced by F Bu 2M close SE (T) 2007
								*
K2523	- PORT WELSHPOOL. Shipping Pier	38 42-34 S 146 26-99 E	Oc R 10s	10	3			
*	*	*	*	*	*	*		*
K3381-1	- Ldg Lts 196°. Kamoomyel. Rear. 4-1M from front	1 14-20 S 131 05-60 E	Fl(2) G 10s	14	6	Green metal framework tower 10		
			*					*
K3632	- TASMAN BRIDGE. Main channel. Centre span. N side ----- Traffic signal	42 51-88 S 147 20-73 E ..	F Bu Fl R	Orange ◇ on metal pole ..		Main channel closed
			*					
K3632-01	- TASMAN BRIDGE. Main channel. Centre span. S side ----- Traffic signal	42 51-89 S 147 20-73 E ..	F Bu Fl R	Orange ◇ on metal pole ..		Main channel closed
			*					
K3847-5	Iliomama Rock	36 48-50 S 174 53-20 E	Q WR	2	W 5 R 3	Black and white metal pile	R 062°-249-5°(187-5°), W 249-5°-062°(172-5°).	Ra Refl. Sectors unreliable (T) 2007
								*
K4099	- Ironsands Loading Buoy	38 10-50 S 174 40-25 E	Fl W 5s	..	6	Orange SBM	fl 1. Ra refl	
								*
K4184	- Pillar Point	40 30-18 S 172 42-85 E	Fl W 5s	166	9			
*	*	*	*	*	*	*		*
K4222	- Schnapper	41 12-19 S 173 19-40 E	Fl(4) WR 20s	13	W15 R 8	Concrete column 11	(fl 2, ec 1) x 3, fl 2, ec 9. W 047°-225°(178°), R 031°-047°(16°). Ra refl	
			*					*

Volume K *continued*

K4261	- Grove Arm	41 15-25 S 173 58-43 E	Fl G 3s	2	2			
*	*	*	*	*	*	*	*	*
K4730	Wakaya Reef. S end	17 41-40 S 179 04-90 E	Fl(2) W 15s	23	19	White 8-sided tower, red bands 25	<i>fl 0-3, ec 2, fl 0-3, ec 12-4.</i> TE 2007	
								*
K4970-36	- PORT D'UTUROA. Passe Teavapiti. N side	16 44-50 S 151 25-50 W	Iso G 3s	5	5	Green □ on green beacon 7	Synchronised with K4970-4	
*	*	*	*	*	*	*	*	*
K4970-4	- PORT D'UTUROA. Passe Teavapiti. S side	16 44-60 S 151 25-40 W	Iso R 3s	5	4	Red △ on red beacon 8	Synchronized with K4970-36	
		*						*
K4998-6401	- Chenal du Nord	14 23-50 S 145 59-30 W	Oc(2) G 6s	4	3	Green □ on green beacon 5		
*	*	*	*	*	*	*	*	*
K4998-6402	- Chenal du Nord	14 23-80 S 145 59-90 W	Iso R 4s	4	3	Red △ on red beacon 5		
*	*	*	*	*	*	*	*	*
K4998-6403	- Chenal du Nord	14 24-20 S 146 00-40 W	Oc G 4s	4	3	Green □ on green beacon 5		
*	*	*	*	*	*	*	*	*
K4998-6404	- Chenal du Nord	14 24-70 S 146 01-60 W	Fl R 4s	4	3	Red △ on red beacon 5	<i>fl 1</i>	
*	*	*	*	*	*	*	*	*
K4998-6405	- Chenal du Nord	14 25-00 S 146 02-10 W	Oc(2) G 6s	4	3	Green □ on green beacon 5		
*	*	*	*	*	*	*	*	*
K4998-6406	- Chenal du Nord	14 22-50 S 145 57-80 W	Fl G 4s	4	3	Green □ on green beacon 4	<i>fl 1</i>	
*	*	*	*	*	*	*	*	*
K4998-6407	- Chenal du Nord	14 22-80 S 145 58-10 W	Oc R 4s	4	3	Red △ on red beacon 5		
*	*	*	*	*	*	*	*	*
K4998-6408	- Chenal du Nord	14 25-00 S 146 02-30 W	Iso R 4s	5	3	Red △ on red beacon 5		
*	*	*	*	*	*	*	*	*
K4998-6409	- Chenal du Nord	14 22-30 S 145 56-70 W	Q W	4	4	△ on yellow beacon, black top 5		
*	*	*	*	*	*	*	*	*
K4998-641	- Chenal du Nord	14 25-10 S 146 02-60 W	Fl G 4s	4	3	Green □ on green beacon 4	<i>fl 1</i>	
*	*	*	*	*	*	*	*	*

Volume K *continued*

K4998-642 - Chenal du Nord	14 25-30 S 146 02-90 W	Oc G 4s	4	3	tribord Green □ on green beacon 4	<i>ec 1</i>	
*	*	*	*	*	*	*	*
K4998-643 - Chenal du Nord	14 25-50 S 146 03-10 W	Oc(2) R 6s	5	3	Red △ on red beacon 6		
*	*	*	*	*	*	*	*
K4998-645 - Chenal du Nord	14 25-80 S 146 03-30 W	Iso G 4s	5	3	Green □ on green beacon 5		
*	*	*	*	*	*	*	*
K4998-65 - Chenal du Nord	14 26-10 S 146 03-60 W	Oc G 4s	4	3	Green □ on green beacon 5		
*	*	*	*	*	*	*	*
K4998-66 - Chenal du Nord	14 26-30 S 146 03-70 W	Fl R 4s	4	3	Red △ on red beacon 5	<i>fl 1</i>	
*	*	*	*	*	*	*	*
K4998-67 - Passe Tairapa	14 27-40 S 146 03-60 W	Oc(2) R 6s	5	3	Red △ on red beacon 5		
*	*	*	*	*	*	*	*
K4998-69 - Chenal du Sud	14 27-40 S 146 03-40 W	Oc R 4s	4	3	Red △ on red beacon 5	<i>ec 1</i>	
*	*	*	*	*	*	*	*
K4998-695 - Chenal du Sud	14 27-50 S 146 03-40 W	Q(3) W 10s	4	3	⊕ on black beacon, yellow band 5		
*	*	*	*	*	*	*	*
K4998-697 - Chenal du Sud	14 27-80 S 146 02-60 W	Oc G 4s	5	3	Green □ on green beacon 5	<i>ec 1</i>	
*	*	*	*	*	*	*	*
K4998-6975 - Chenal du Sud	14 27-90 S 146 02-30 W	Iso R 4s	4	3	Red △ on red beacon 5		
*	*	*	*	*	*	*	*
K4998-6977 - Chenal du Sud	14 27-80 S 146 02-20 W	Oc(2) R 6s	5	3	Red △ on red beacon 5		
*	*	*	*	*	*	*	*
K4998-6979 - Chenal du Sud	14 27-70 S 146 01-80 W	Oc G 4s	4	3	Green □ on green beacon 5	<i>ec 1</i>	
*	*	*	*	*	*	*	*
K4998-698 - Chenal du Sud	14 27-70 S 146 03-20 W	Fl G 4s	5	3	Green □ on green beacon 5	<i>fl 1</i>	
*	*	*	*	*	*	*	*
K4998-6981 - Chenal du Sud	14 27-30 S 145 59-90 W	Iso G 4s	5	3	Green □ on green beacon 5		
*	*	*	*	*	*	*	*

Volume K *continued*

K4998-6982 - Chenal du Sud	14 27-30 S 146 00-60 W	Oc(2) R 6s	5	3	Red \triangle on red beacon 5		
* *	* *	* *	* *	* *	* *		*
K4998-6983 - Chenal du Sud	14 27-30 S 145 59-40 W	Fl R 4s	5	3	Red \triangle on red column 5	<i>fl 1</i>	
* *	* *	* *	* *	* *	* *		*
K4998-6984 - Chenal du Sud	14 27-10 S 145 59-00 W	Oc R 4s	5	3	Red \triangle on red beacon 5		
* *	* *	* *	* *	* *	* *		*
K4998-6988 - Chenal du Sud	14 26-60 S 145 57-30 W	Iso R 4s	5	3	Red \triangle on red beacon 5		
* *	* *	* *	* *	* *	* *		*
K4998-6989 - Chenal du Sud	14 26-30 S 145 56-30 W	Fl R 4s	4	3	Red \triangle on red beacon 4	<i>fl 1</i>	
* *	* *	* *	* *	* *	* *		*
K4998-699 - Chenal du Sud	14 26-40 S 145 56-80 W	VQ(6)+LFl 10s	4	2	∇ on black beacon, yellow top 5		
* *	* *	* *	* *	* *	* *		*
K4998-6991 - Chenal du Sud	14 26-00 S 145 55-50 W	Oc G 4s	4	3	Green \square on green beacon	<i>ec 1</i>	
* *	* *	* *	* *	* *	* *		*
K4998-6992 - Chenal du Sud	14 26-60 S 145 58-20 W	Oc(2) G 6s	5	3	Green \square on green beacon 5		
* *	* *	* *	* *	* *	* *		*
K4998-6993 - Chenal du Sud	14 25-00 S 145 54-10 W	Fl G 4s	5	3	Green \square on green beacon 5	<i>fl 1</i>	
* *	* *	* *	* *	* *	* *		*
K4998-6995 - Chenal du Sud	14 24-20 S 145 53-00 W	Q W	5	4	\triangle on yellow beacon, black top 5		
* *	* *	* *	* *	* *	* *		*
K4998-6997 - Chenal du Sud	14 24-50 S 145 53-60 W	Oc G 4s	5	3	Green \square on green beacon 5	<i>ec 1</i>	
* *	* *	* *	* *	* *	* *		*
K5000-4 - Torea (F)	16 04-20 S 145 41-80 W	Fl W 5s	29	18	Red and white column 28	TE 2007	
							*
K5001 - Shoal (F)	16 03-90 S 145 38-40 W	Fl R 4s	5	4	Red \square on red beacon 12	<i>fl 1.</i> TE 2007	
							*

III

NAVIGATION WARNINGS

The following radio messages have been received during the period to 30 March 2007. Signal copies of these messages may be destroyed. It is recommended that the reprint of Navigational Warnings should be kept in a file or a book divided into areas. Cancellation should be made on receipt of signals and reprints.

Rigs on location other than those listed in the latest Section III summary are the subject of Radio Navigational Warnings. Rigs in transit will not be the subject of Warnings.

AUSCOAST WARNING

- 047 Cancelled.
- 048 S Coast. South Page Racon O established in position 35° 46'.7 S 138° 17'.5 E.
- 049 NW Coast. Pipe laying and drilling operations being conducted in area bounded by 21° 20'.3 S to 21° 32'.3 S and 113° 46'.2 E to 113° 53'.5 E.
- 050 SE Coast. Seismic survey vessel *WesternTrident* towing 3M cables in area 38° 19' S to 38° 48' S and 147° 26' E to 147° 54' E. 5M clearance requested.
- 051 Cancelled.

NAVAREA X WARNINGS

Nil issued.

Navigational warnings in force as at 300001UTC MAR 07.

Auscoast

028 032 034 035 036 037 038 041 043 044 048 049 050.

Navarea X

Nil

Summary of mobile drilling rigs as at 300001UTC MAR 07.

<i>Name</i>	<i>Position</i>
Songa Venus	12° 55'.8 S 124° 28'.1 E
Stena Clyde	12° 17'.7 S 124° 19'.9 E
Ocean Epoch	13° 48'.1 S 123° 20'.1 E
Nan Hai VI	13° 57'.0 S 122° 02'.8 E
Chikyu	14° 34'.4 S 121° 34'.7 E
Ocean Bounty	19° 30'.6 S 116° 36'.3 E
Sedco 703	20° 08'.2 S 115° 02'.4 E
Ensco 106	20° 30'.0 S 115° 25'.8 E
Atwood Eagle	21° 28'.5 S 113° 49'.5 E

NAVAREA XIV WARNINGS

- 010 South Pacific. Fiji. Navula Point light K4706 (17° 53'.2 S 177° 15'.2 E) unlit.

Navarea XIV warnings in force as at 300001UTC MAR 07.

2006 049.

2007 005 007 010.

HYDROGRAPHIC REPORTS

Nil Reports

<i>Locality</i>	<i>Report</i>	<i>Ship/Authority</i>	<i>Observer</i>
WA- Jar Island	Rock	MV <i>Montoro</i>	M Alexander

AMENDMENTS TO ADMIRALTY LIST OF RADIO SIGNALS 2007

Edition No 7 dated 13 April 2007

VOLUME 1, PART 2, NP 281(2), 2006/07





Published BA Wk 26/06

(Last Amendments: Edition No 6 dated 30 March 2007)

MARITIME RADIO STATIONS

Page 184, MALAYSIA, PENINSULAR, MALAYSIA MRCC (PENINSULAR).

Delete entry and replace by:

PUTRAJAYA MRCC (9MHF2)					
05°26'N 100°24'E	MMSI 005330108	DSC VHF			Diagram page 185
 Putrajaya MRCC: +60 3 89413140			 Putrajaya MRCC: +60 3 89413129		
E-MAIL: mrccputrajaya@mmea.gov.my					
Peninsular Malaysia			Sabah & Sarawak		
Associated MRSC DSC VHF MMSI and voice callsign in brackets	Johor Bahru MRSC: MMSI 005330035 (9MHE6) Kuantan MRSC: MMSI 005330045 (9MHE9) Langkawi MRSC: MMSI 005330025 (9MHE5)	Kota Kinabalu MRSC: MMSI 005330055 (9MHE7) Kuching MRSC: MMSI 005330075 (9MHE8)			
 Johor Bahru MRSC: +60 7 2219231 Kota Kinabalu MRSC: +60 8 8429803 Kuantan MRSC: +60 9 5734066 Kuching MRSC: +60 8 2367943 Langkawi MRSC: +60 4 9665307			 Johor Bahru MRSC: +60 7 2224739 Kota Kinabalu MRSC: +60 8 8427075 Kuantan MRSC: +60 9 5734177 Kuching MRSC: +60 8 2364941 Langkawi MRSC: +60 4 9669543		
The Malaysian Maritime Enforcement Agency (MMEA) is responsible for co-ordinating Search and Rescue operations. Additional radio watch-keeping on international Distress frequencies, including DSC VHF and MF, are maintained by a network of remote stations under the control of Penang Radio (9MG). The areas covered include the Malaysian Peninsular, Sabah and Sarawak.					

Malaysian Maritime Enforcement Agency Ad13/07

Page 185, diagram, MALAYSIA & SINGAPORE, MARITIME RADIO STATIONS, MRCC & MRSC.

Delete diagram and replace by diagram on page 27

Malaysian Maritime Enforcement Agency Ad13/07

Page 186, MALAYSIA, PENINSULAR, PENANG (9MG), DSC Table.

Delete table and replace by:

Peninsular Malaysia					
DSC VHF	MMSI	DSC VHF	MMSI	DSC MF	MMSI
Bukit Kemuning 4°19'N 103°28'E	005330008	Kuala Terengganu 5°18'N 103°08'E	005330009	Kuantan 4°06'N 103°23'E	005330008
Gunung Berinchang 4°31'N 101°23'E	005330003	Machang 5°42'N 102°17'E	005330010	Permatang Pauh 5°25'N 100°24'E	005330002
Gunung Jerai 5°47'N 100°26'E	005330001	Pulau Tioman 2°48'N 104°12'E	005330006		
Gunung Ledang 2°03'N 102°34'E	005330005	Ulu Kali 3°26'N 101°47'E	005330004		
Kuala Rompin 2°48'N 103°29'E	005330007				
Sabah & Sarawak					
DSC VHF	MMSI	DSC VHF	MMSI	DSC MF	MMSI
Bintulu 3°13'N 113°05'E	005330012	Kota Kinabalu 6°02'N 116°12'E	005330013	Kota Kinabalu 5°57'N 116°02'E	005330013
Kuching 1°35'N 110°11'E	005330011	Labuan 5°17'N 115°15'E	005330014	Kuching 1°49'N 109°46'E	005330011

Malaysian Maritime Enforcement Agency Ad13/07

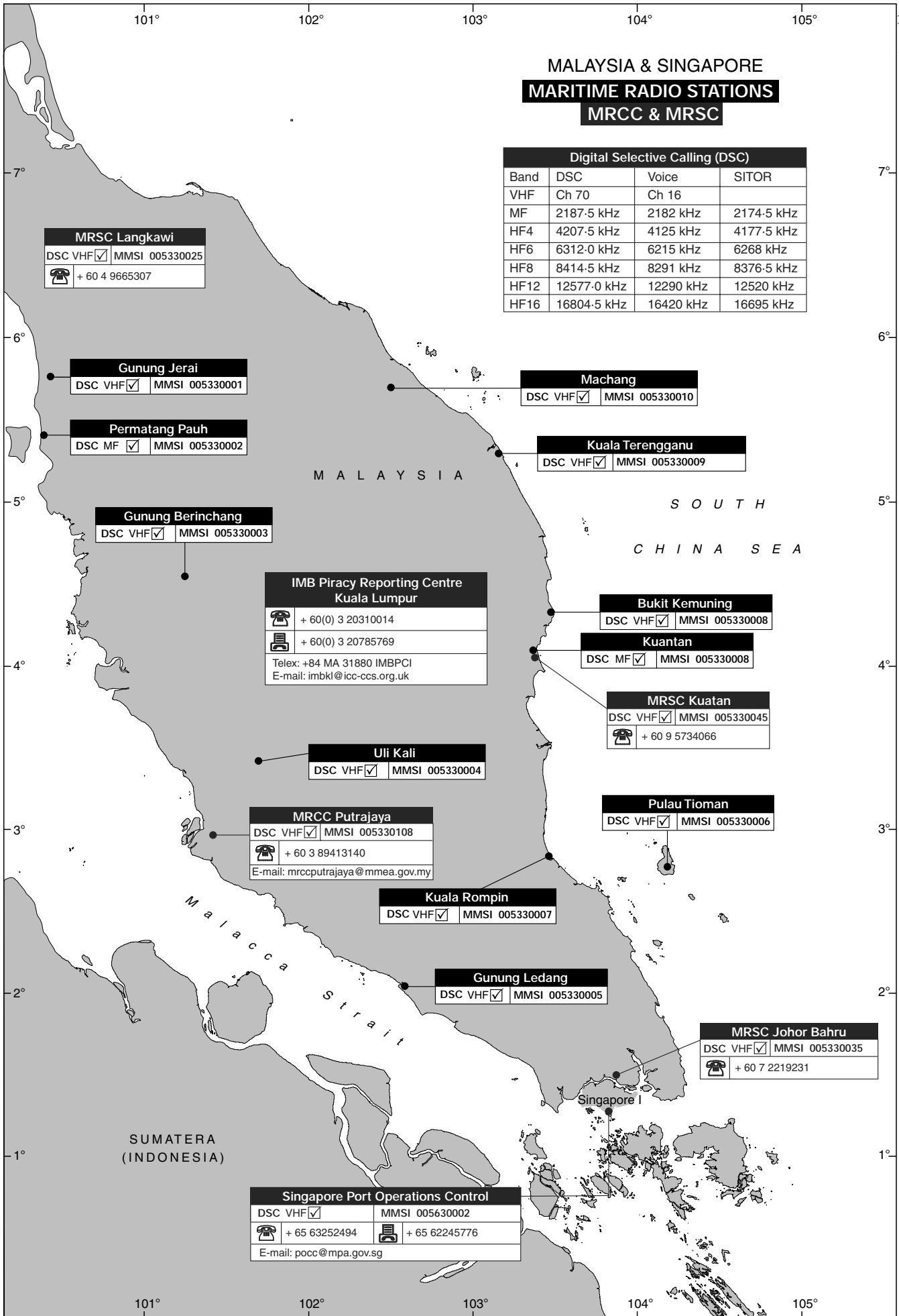
Page 187, MALAYSIA (SABAH), LABUAN MRCC (SABAH AND SARAWAK).

Delete entry.

Malaysian Maritime Enforcement Agency Ad13/07

**MALAYSIA & SINGAPORE
MARITIME RADIO STATIONS
MRCC & MRSC**

Digital Selective Calling (DSC)			
Band	DSC	Voice	SITOR
VHF	Ch 70	Ch 16	
MF	2187.5 kHz	2182 kHz	2174.5 kHz
HF4	4207.5 kHz	4125 kHz	4177.5 kHz
HF6	6312.0 kHz	6215 kHz	6268 kHz
HF8	8414.5 kHz	8291 kHz	8376.5 kHz
HF12	12577.0 kHz	12290 kHz	12520 kHz
HF16	16804.5 kHz	16420 kHz	16695 kHz



MRSC Langkawi
DSC VHF MMSI 005330025
☎ + 60 4 9665307

Gunung Jerai
DSC VHF MMSI 005330001

Permatang Pauh
DSC MF MMSI 005330002

Gunung Berinchang
DSC VHF MMSI 005330003

**IMB Piracy Reporting Centre
Kuala Lumpur**
☎ + 60(0) 3 20310014
☎ + 60(0) 3 20785769
Telex: +84 MA 31880 IMBPCI
E-mail: imbkl@icc-ccs.org.uk

Uli Kali
DSC VHF MMSI 005330004

MRCC Putrajaya
DSC VHF MMSI 005330108
☎ + 60 3 89413140
E-mail: mrccputrajaya@mmea.gov.my

Kuala Rompin
DSC VHF MMSI 005330007

Gunung Ledang
DSC VHF MMSI 005330005

Singapore Port Operations Control
DSC VHF MMSI 005630002
☎ + 65 63252494 ☎ + 65 62245776
E-mail: pocc@mpa.gov.sg

Machang
DSC VHF MMSI 005330010

Kuala Terengganu
DSC VHF MMSI 005330009

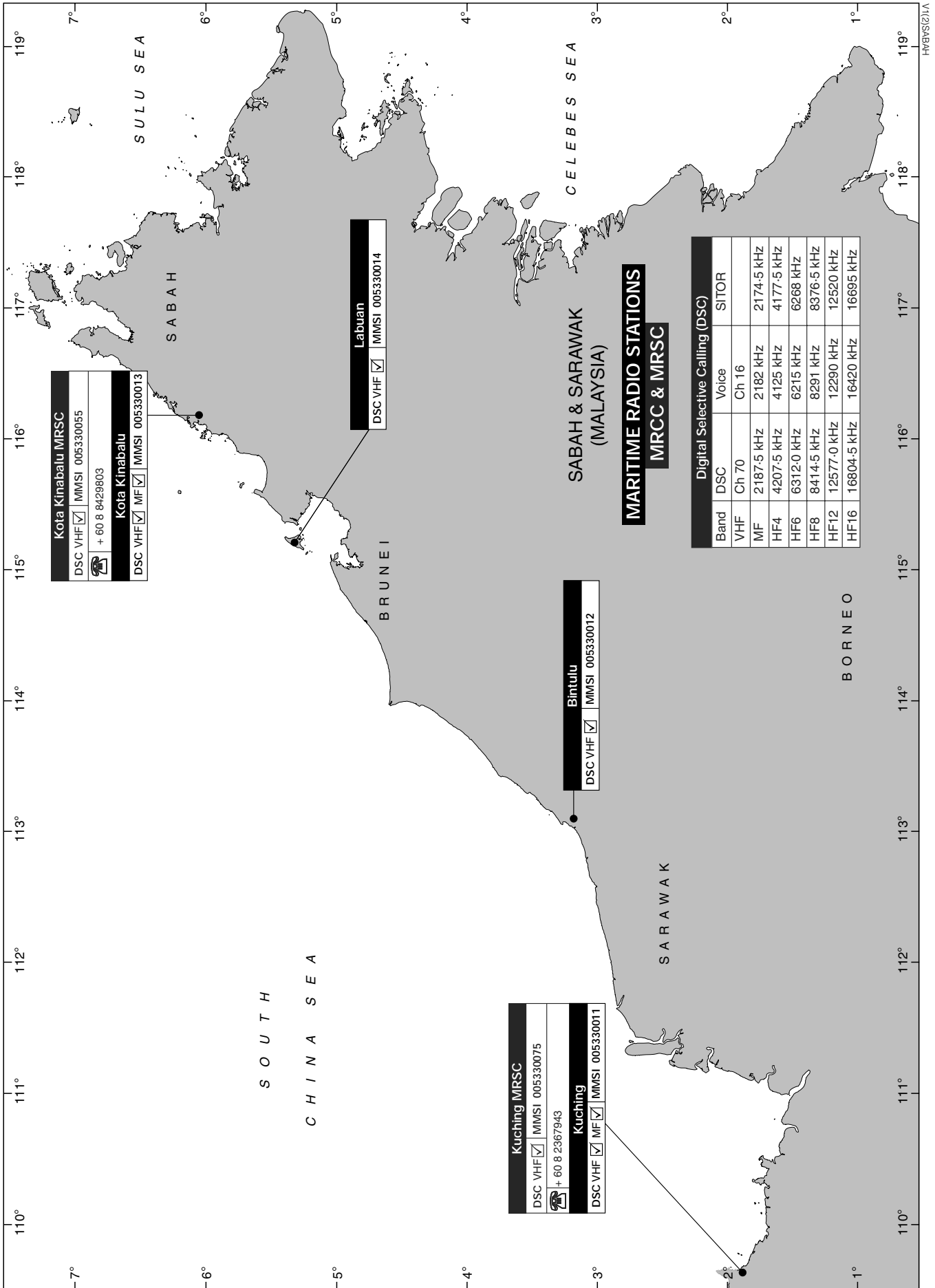
Bukit Kemuning
DSC VHF MMSI 005330008

Kuantan
DSC MF MMSI 005330008

MRSC Kuantan
DSC VHF MMSI 005330045
☎ + 60 9 5734066

Pulau Tioman
DSC VHF MMSI 005330006

MRSC Johor Bahru
DSC VHF MMSI 005330035
☎ + 60 7 2219231



Page 188, diagram, SABAH & SARAWAK, MARITIME RADIO STATIONS, MRCC & MRSC.
Delete diagram and replace by diagram on page 28

Malaysian Maritime Enforcement Agency Ad13/07

VOLUME 2, NP 282, 2006/07

Published BA Wk 7/06

(Last Amendments: Edition No 6 dated 30 March 2007)

THE 2007/08 EDITION OF THIS VOLUME HAS NOW BEEN PUBLISHED
THE 2006/07 EDITION IS CANCELLED

VOLUME 2, NP 282, 2007/08

Published BA Wk 13/07

Notices accrued from BA Week 1/07 to BA Week 12/07, are re-issued along with new information

DIRECTIONS FOR UPDATING THIS VOLUME

Page iii,
Below,

RECORD OF AMENDMENTS

Weekly Notices to Mariners (Section VI)

Insert:

This edition was published in week 13/07. The first Weekly Notice to Mariners was issued in week 13/07.

UKHO Ad13/07

RADAR BEACONS

Page 29, IRELAND, REPUBLIC OF section.

53480 Coningbeg Lt Float

Delete entry and replace by:

Coningbeg Lt Buoy Racon 52°03'·20N 6°38'·57W 53480
(3 & 10 cm) 360° 6-16 n miles G

Commissioners of Irish Lights Notice 13/2006 and Commissioners of Irish
Lights Notice Ad13/07

Page 32, NETHERLANDS section.

54950 Westgat Schiermonnikoog Lt Buoy WG

Delete entry and replace by:

Westgat Lt Buoy WG Racon 53°32'·00N 5°58'·54E 54947
(3 & 10 cm) Z

Netherlands Notice 49/670/06 Ad13/07

Page 34, DENMARK section.

Insert:

Valdemar Oil Field, Racon 55°48'·24N 4°33'·86E 55745
Platform DUC-VB-A
(3 & 10 cm) 360° U

Danish Hydrographic Office Ad13/07

Page 40, FINLAND section.

Insert:

Kaskinen Fairway Lt Bn Racon 62°17'·19N 21°10'·13E 60150
M

Finnish Notice 4/71/07 Ad11/07

Page 54, SPAIN (North Coast) section.

Insert:

Cabo Prioriño Chico Breakwater Lt Racon 43°27'·25N 8°19'·81W 67715
12 n miles N

Spanish Notice 3/19/07 Ad13/07

Page 54, PORTUGAL section.

67980 Canal do Barreiro, Lt Buoy No 13B IS

Delete entry

Portuguese Chart 26305 Ad13/07

Page 57, ALBANIA section.

70610 Durrës Lt

Delete position and replace by: 41°18'·84N 19°27'·97E

Italian Notice 22.7/06 Ad13/07

Page 58, TURKEY (Aegean Coast) section.

Insert:

İncekum Burnu Lt Racon 36°13'·88N 33°57'·32E 70770
(3 & 10 cm) K

Turkish Notice 5/16/07 Ad13/07

Page 58, TURKEY (Aegean Coast) section.

Insert:

Devegeçeği Lt Racon 36°43'·03N 35°42'·91E 70780
(3 & 10 cm) Y

Turkish Notice 5/16/07 Ad13/07

Page 64, SOUTH AFRICA section.
73860 Saldanha Bay (Marcus Island) Lt
 Delete entry

South African Notice 1/32/07 Ad13/07

Page 64, SOUTH AFRICA section.
73870 Saldanha Bay (Lynch Point), Rear Ldg Lt
 Delete entry

South African Notice 1/32/07 Ad13/07

Page 75, INDIA section.
78955 Gopnāth Point Lt
 Delete entry

Indian Chart 208 Ad13/07

Page 76, INDIA section.
 Insert:

Azhikod Lt Racon¹ 10°11'·87N 76°09'·52E **79075**

D

(1) On trial

NAVAREA VIII Warning 044/07 Ad10/07

Page 78, MALAYSIA (West Coast) section.
79860 One Fathom Bank Lt Bn
 Delete entry

Malaysian Notice 5/85/06 Ad13/07

Page 82, CHINA section.
 Insert:

Zhanjiang Gang Lt Vessel Racon 20°55'·99N 110°40'·38E **81170**

M

Chinese Notice 4/78/07 Ad13/07

Page 85, CHINA section.
 Insert:

Da Yu Lt Bn Racon 24°58'·06N 119°02'·02E **81504**

G

Chinese Notice 51/1167/06 Ad13/07

Page 85, CHINA section.
 Insert:

Gu Yu Lt Bn Racon 25°40'·57N 119°37'·50E **81524**

K

Chinese Notice 1/9/07 Ad13/07

Page 86, CHINA section.
 Insert:

Dayan Tou Lt Bn Racon 28°02'·27N 121°09'·20E **81633**

X

Chinese Notice 47/1046/06 Ad13/07

Page 87, CHINA section.
 Insert:

Haimen Gang Lt Buoy No 1 Racon 28°39'·80N 121°39'·65E **81641**

M

Chinese Notice 47/1047/06 Ad13/07

Page 89, CHINA section.
 Insert:

Xiaoqu Shan Lt Racon 30°31'·54N 122°15'·89E **81773**

C

Chinese Notice 1/7/07 Ad13/07

Page 90, CHINA section.
 Insert:

Changjiang Kou Lt Buoy D12 Racon 31°05'·97N 122°18'·30E **81825**

G

Chinese Notice 50/1140/06 Ad13/07

Page 90, CHINA section.
 Insert:

Beicaozhong Lt Racon 31°14'·00N 122°00'·50E **81880**

G

Chinese List of Lights G102/2006 Ad13/07

Page 90, CHINA section.
 Insert:

Changjiang Kou Lt Buoy No 1 Racon 31°41'·92N 122°11'·04E **81944**

O

Chinese Notice 1/6/07 Ad13/07

Page 91, CHINA section.
 Insert:

Doulong Gangkou Lt Buoy Racon 33°35'·57N 120°47'·71E **81952**

O

Chinese Notice 48/1081/06 Ad13/07

Page 94, CHINA section.
 Insert:

Shicheng Liedao Lt Buoy No 1 Racon 39°28'·68N 123°05'·83E **82287**

Z

Chinese Notice 1/1/07 Ad13/07

Page 94, KOREA, SOUTH section.
 Insert:

Inch' ōn buk Hang Lt Racon 37°29'·60N 126°36'·40E **82302**
 (3 & 10 cm) 10 n miles **Q**

Korean Notice 7/122/07 Ad13/07

Page 94, KOREA, SOUTH section.
 Insert:

Ch'och'iam Lt Racon 37°19'·69N 126°13'·37E **82335**
 (3 & 10 cm) 10 n miles **C**

Korean Notice 52/913/06 Ad13/07

Page 94, KOREA, SOUTH section.
82395 Mallyukto Lt
 Delete morse ident O and replace by: OO

Korean Hydrographic Office Ad13/07

Page 95, KOREA, SOUTH section.
Insert:

Banseo Lt Racon 36°58'·20N 125°51'·20E **82417**
(3 & 10 cm) 10 n miles **G**

Korean Notice 52/912/06 Ad13/07

Page 97, KOREA, SOUTH section.
82715 Kwangyang Hang Lt Bn
Delete sweep period 60s and replace by: (3 & 10 cm)

Korean Hydrographic Office Ad13/07

Page 97, KOREA, SOUTH section.
Insert:

Kwangyang Hang, Lt Buoy No 110 Racon 34°54'·70N 127°48'·65E **82725**
(3 & 10 cm) 8 n miles **X**

Korean Notice 52/896/06 Ad13/07

Page 98, KOREA, SOUTH section.
82892 Pusan No 2 Fairway, Lt Buoy No 15
Delete entry and replace by:

Pusan No 2 Fairway, Lt Buoy No 15 Racon 35°04'·76N 129°01'·90E **82892**
60s 3 n miles **G**

Korean Hydrographic Office Ad13/07

Page 98, KOREA, SOUTH section.
82905 Ulsan Eastwards, Platform
Delete entry and replace by:

Ulsan Eastwards, Platform Racon 35°25'·90N 130°00'·00E **82905**
(3 & 10 cm) 20 n miles **DD**

Korean Hydrographic Office Ad13/07

Page 106, MALAYSIA (Sarawak) section.
Insert:

F23 Oil Field Platform Racon 4°41'·28N 112°29'·18E **85825**

Sarawak Chart SAR 4 Ad13/07

Page 106, MALAYSIA (Sarawak) section.
Insert:

Tanjung Sirik Lt Racon 2°46'·87N 111°19'·11E **85860**
K

Sarawak Chart SAR 4 Ad13/07

Page 107, INDONESIA (Sumatera) section.
86060 Nipahlarangan Lt
Delete range 20 n miles and replace by: 25 n miles
Delete morse ident T and replace by: N

Indonesian Notice 43/335/06 Ad13/07

Page 109, INDONESIA (Nusa Tenggara) section.
86580 Giliselang Lt
Delete entry

Indonesian Chart 70A Ad13/07

Page 112, AUSTRALIA section.
Insert:

South Page Lt Racon 35°46'·65S 138°17'·48E **87690**
O

Australian Notice 5/250(P)/07 Ad13/07

Page 112, AUSTRALIA section.
87940 Sandy Cape Lt
Delete entry

Australian Notice 26/1289(P)/06 Ad13/07

Page 119, PANAMA (Pacific Coast) section.
91520 Flamenco Island Lt
Delete morse ident A and replace by: N

Panama Ports Company Ad13/07

Page 120, ECUADOR section.
91760 San Cristóbal, Colorado Hill Lt
Delete entry

Institute Oceanographic of the Navy, Ecuador Ad13/07

Page 120, ECUADOR section.
Insert:

Isla Santa Cruz Lt Racon 0°44'·64S 90°18'·67W **91765**
(3 & 10 cm) **C**

Institute Oceanographic of the Navy, Ecuador Ad13/07

Page 120, ECUADOR section.
91770 Roca Five Fingers Lt
Delete entry

Institute Oceanographic of the Navy, Ecuador Ad13/07

Page 120, PERU section.
91815 Paita, Pta Telégrafo Lt
Delete position and replace by: 5°04'·25S 81°07'·46W

Peruvian Chart 1133 Ad13/07

Page 120, PERU section.
91885 Pta Coles Lt
Delete entry

Peruvian Notice 06/063/07 Ad13/07

Page 122, ARGENTINA section.
92940 El Rinçon Lt Buoy
Delete entry

Servicio de Hidrografía Naval, Argentina Ad13/07

Page 123, ARGENTINA section.
93220 Puerto Nuevo South Jetty Lt Km 0-9
Delete entry

Servicio de Hidrografía Naval, Argentina Ad13/07

Page 125, BRAZIL section.
94120 Salinópolis Lt
Delete name and replace by: Salinópolis
Delete position and replace by: 0°37'·09S 47°21'·29W

Brazilian Chart 302 Ad13/07

Page 127, COLOMBIA (Caribbean Coast) section.
Insert:

Isla Draga Signal Station Racon 10°18'·75N 75°34'·65W **94895**
(3 & 10 cm) **C**

Colombian Notice 164/06 Ad13/07

Page 128, MEXICO (Gulf Coast) section.
Insert:

Barra de Tuxpan Approach Lt Buoy Racon 20°59'·27N 97°16'·26W **95535**
X

Mexican Notice 5/55/06 Ad13/07

Page 128, MEXICO (Gulf Coast) section.
Insert:

Puerto de Tampico Approach Lt Buoy Racon 22°16'·40N 97°43'·89W **95558**
Q

Mexican Notice 1/228/07 Ad13/07

Page 129, UNITED STATES (Gulf Coast) section.
Insert:

Apex- GA- A40-01 Platform Racon 28°31'·20N 94°50'·33W **95675**
(3 & 10 cm) B

United States Light List Corrections 52/06 Ad13/07

Page 130, UNITED STATES (Gulf Coast) section.
Insert:

Novus- EC- 318-B Platform Racon 28°13'·13N 92°55'·52W **95925**
(3 & 10 cm) T

United States Light List Corrections 52/06 Ad13/07

Page 130, UNITED STATES (Gulf Coast) section.
Insert:

BP Exploration-GC-787-A Platform Racon 27°11'·73N 90°01'·62W **96140**
(3 cm) X

United States Coast Guard Light List Volume IV Ad13/07

Page 133, UNITED STATES (Atlantic Coast) section.
Insert:

Outerbridge Crossing Racon 40°31'·48N 74°14'·88W **97145**
O

United States Notice 8/1233/07 Ad13/07

Page 136, CANADA (Atlantic Coast) section.
98190 Ste. Croix Rear Ldg Bn
Delete entry

Canadian East Notice 12/1314/06 Ad13/07

Page 136, CANADA (Atlantic Coast) section.
98240 Pointe des Grondines, Rear Ldg Lt
Delete entry

Canadian East Notice 12/1315/06 Ad13/07

LEGAL TIME

Page 216, Cuba, Daylight Saving Time, Begins column.
Delete Last Sun in March 0001h and replace by: Second Sun in March 0001h

OAG Worldwide Ltd Ad13/07

Page 217, Haiti.
Delete and replace by:

Haiti	+05			
-------	-----	--	--	--

OAG Worldwide Ltd Ad13/07

Page 221, Saint Pierre and Miquelon.
Delete and replace by:

Saint Pierre and Miquelon	+03	+02	Second Sun in March 0200h	First Sun in Nov 0200h
---------------------------	-----	-----	---------------------------	------------------------

OAG Worldwide Ltd Ad13/07

ELECTRONIC POSITION FIXING SYSTEM

PAGE 254, Loran-C: Chains in Operation section.
INDIA (KOLKATA, (CALCUTTA)) CHAIN
Delete entry

Indian Corrections to List of Radio Signals 24/06 Ad13/07

PAGE 259, LORAN-C CHAIN COVERAGE diagram.
INDIA CHAIN DESIGNATORS
Delete legend Chain 5543: Kolkata (Calcutta) Chain in position 32°N 80°E
Delete legend 5543-X 5543-Y in position 21°30'N 86°55'E

Indian Corrections to List of Radio Signals 24/06 Ad13/07

PAGE 260, LORAN-C CHAIN COVERAGE diagram.
Delete legend See coverage diagram for the Calcutta Chain (5543) in position 30°N 90°E

Indian Corrections to List of Radio Signals 24/06 Ad13/07

VOLUME 3, PART 2, NP 283(2), 2007/08

Published BA Wk 3/07
(Last Amendments: Edition No 6 dated 30 March 2007)

MARITIME SAFETY INFORMATION**PAGES 3 & 4, NAVAREA CO-ORDINATORS.**

Delete section and replace by:

NAVAREA CO-ORDINATORS**NAVAREA I (United Kingdom)**

East Atlantic (North of 48°27'N) North Sea and Baltic.

United Kingdom Hydrographer
United Kingdom Hydrographic Office
Admiralty Way
TAUNTON
Somerset TA1 2DN
England
Telephone: +44(0)1823 723315
Fax: +44(0)1823 322352
E-mail: navwarnings@btconnect.com
(Baltic Sea Sub-Area Coordinator)
Swedish Maritime Administration
BALTICO
SE-601 78 NORRKÖPING
Sweden
Telephone: +46 11 191045
Fax: +46 11 238945
E-mail: ntm.baltico@sjofartsverket.se
Website: www.sjofartsverket.se/baltico

NAVAREA II (France)

East Atlantic (48°27'N-6°00'S)

Chief of the Section
"Information et Ouvrages Nautiques"
Etablissement Principal du Service Hydrographique et
Oceanographique de la Marine (EPSHOM)
13 Rue du Chatellier
BP 30316
29603 BREST CEDEX
France
Telephone: +33 2 98221599
Fax: +33 2 98221432
E-mail: coord.navarea2@shom.fr
Website: www.shom.fr/fr_page/fr_serv_gan/avert_f_f.htm

NAVAREA III (Spain)

Mediterranean and Black Seas

Head of the Navigational Area
Instituto Hidrográfico de la Marina
Plaza de San Severiano No 3
11007 CÁDIZ
Spain
Telephone: +34 956 599409 & 599414
Fax: +34 956 599396
E-mail: ihmesp@fn.mde.es
Website: www.armada.mde.es/ihm/

NAVAREA IV and XII (United States)

West Atlantic (North of 7°00'N), North Pacific (East of 180°)

Maritime Division
ATTN: PVM (Mail Stop D-44)
4600 Sangamore Rd
Bethesda
Maryland 20816-5003
USA
Telephone: +1 301 2277646
Fax: +1 301 2273731
E-mail: navsafety@nga.mil
Website: www.nga.mil/portal/site/maritime

NAVAREA V (Brazil)

West Atlantic (7°00'N-35°50'S)

Director
Diretoria de Hidrografia e Navegação
Rua Barão de Jaceguay, s/n°
Ponta da Armação
24048-900 Niterói - RJ
Brazil
Telephone: +55 21 21893023 & 21893210
Fax: +55 21 21893210 & 26200073
E-mail: segnav@chm.mar.mil.br
Website: www.mar.mil.br/dhn/dhnini/servicos.htm

NAVAREA VI (Argentina)

West Atlantic (South of 35°50'S)

Head of Maritime Safety Department
Servicio de Hidrografia Naval
Avenida Montes de Oca 2124
C1270ABV BUENOS AIRES
Argentina
Telephone: +54 11 43012249
Fax: +54 11 43012249, 43032299 & 43030939
E-mail: snautica@hidro.gov.ar
NAVAREAVI@hidro.gov.ar
Website: www.hidro.gov.ar/Nautica/radioav.asp

NAVAREA VII (South Africa)

S Atlantic (East of 20°W) and S Indian Ocean (West of 80°E)

The Hydrographer, S.A. Navy
Hydrographic Office
Private Bag X1, Tokai
7966 CAPE TOWN
South Africa
Telephone: +27 21 7872408
Fax: +27 21 7872228
E-mail: hydrosan@iafrica.com
Website: www.sanho.co.za

NAVAREA VIII (India)

Indian Ocean

Deputy Hydrographer (Marine Safety Services)
National Hydrographic Office
107-A Rajpur Road
P.B. No 75
Dehra Dun, Uttaranchal
India
Pin 248001
Telephone: +91 135 2747365
Fax: +91 135 2748373
E-mail: incho_marinesafety@dataone.in
incho_navwarnings@dataone.in
Website: www.hydrobharat.nic.in

NAVAREA IX (Pakistan)

Red Sea and Persian Gulf

Hydrographer of the Pakistan Navy
Hydrographic Dept
11, Liaquat Barracks
Karachi
Pakistan
Telephone: +92 21 48506152 & 56636151
Fax: +92 21 9201623 & 9203246
E-mail: hydropk@bol.edu.pk
hydropk@paknavy.gov.pk
Website: www.paknavy.gov.pk/hydro/index.asp

NAVAREA X (Australia)

Australia, Coral Sea, Southern Ocean (80°E–160°E)

Manager AUMCC

AusSAR, Australian Maritime Safety Authority

GPO Box 2181

Canberra City

ACT 2601

Australia

Telephone: +61 8 94302130

Fax: +61 8 94302121

E-mail: rccaus@amsa.gov.au

Website: www.amsa.gov.au/Search_and_Rescue/Distress_and_Safety_Communications/Maritime_Safety_Information.asp

NAVAREA XI (Japan)

West Pacific (South of 45°N)

Director, Notice to Mariners Office

Chart and Navigation Information Division

Hydrographic and Oceanographic Department

Japan Coast Guard

3-1, Tsukiji 5-chome

Chuo-ku TOKYO 104-0045

Japan

Telephone: +81 3 35413817

Fax: +81 3 35427174

E-mail: tuho@jodc.go.jp

keiho-tsuuhou@kaiho.mlit.go.jp

Website: www1.kaiho.mlit.go.jp/jhd-E.html

NAVAREA XIII (Russia)

West Pacific (North of 45°N)

Chief, Notice to Mariners and Radio Navigational Warnings Division

Head Department of Navigation and Oceanography

8, 11 Liniya, B-34

ST PETERSBURG 199034

Russia

Telephone: +7 812 7175900

Fax: +7 812 7175900

E-mail: gunio@homepage.ru

NAVAREA XIV (New Zealand)

South Pacific (West of 120°W)

LINZ Hydrographic Services

Land Information New Zealand

National Office, Lambton House

160 Lambton Quay

Private Box 5501

Wellington

New Zealand

Telephone: +64 4 4600110

Fax: +64 4 4600161

E-mail: info@linz.govt.nz

Website: www.linz.govt.nz/audiences/mariners/index.html

NAVAREA XV (Chile)

South Pacific (East of 120°W)

Director, Hydrographic and Oceanographic Service of the Chilean Navy

Errazuriz 254

Playa Ancha

VALPARAISO

Chile

Telephone: +56 322 266666

Fax: +56 322 266542

E-mail: shoa@shoa.cl

Website: www.shoa.cl/servicios/nurnav/radioavi01.htm

NAVAREA XVI (Peru)

South Pacific (East of 120°W, 3°24'S–18°21'S)

Dirección de Hidrografía y Navegación

Avda Gamarra N° 500

Chucuito

CALLAO 1

Peru

Telephone: +51 1 4658312, 4296019 & 4299063

Fax: +51 1 4652995

E-mail: dihidronav@dhn.mil.pe

jvaldez@dhn.mil.pe

Website: www.dhn.mil.pe

IHO Ad13/07

RADIO-FACSIMILE

Page 74, TOKYO (JMH).

Delete frequency table and replace by:

	3622-5		H24
	7795		
	13988-5		

Northwest Snipe and Japan Meteorological Agency Ad13/07

RADIO WEATHER SERVICES AND NAVIGATIONAL WARNINGS

Page 217, diagram, N.O.A.A. WEATHER RADIO, MONTAUK POINT TO SANDY HOOK, COASTAL FORECAST AREAS.

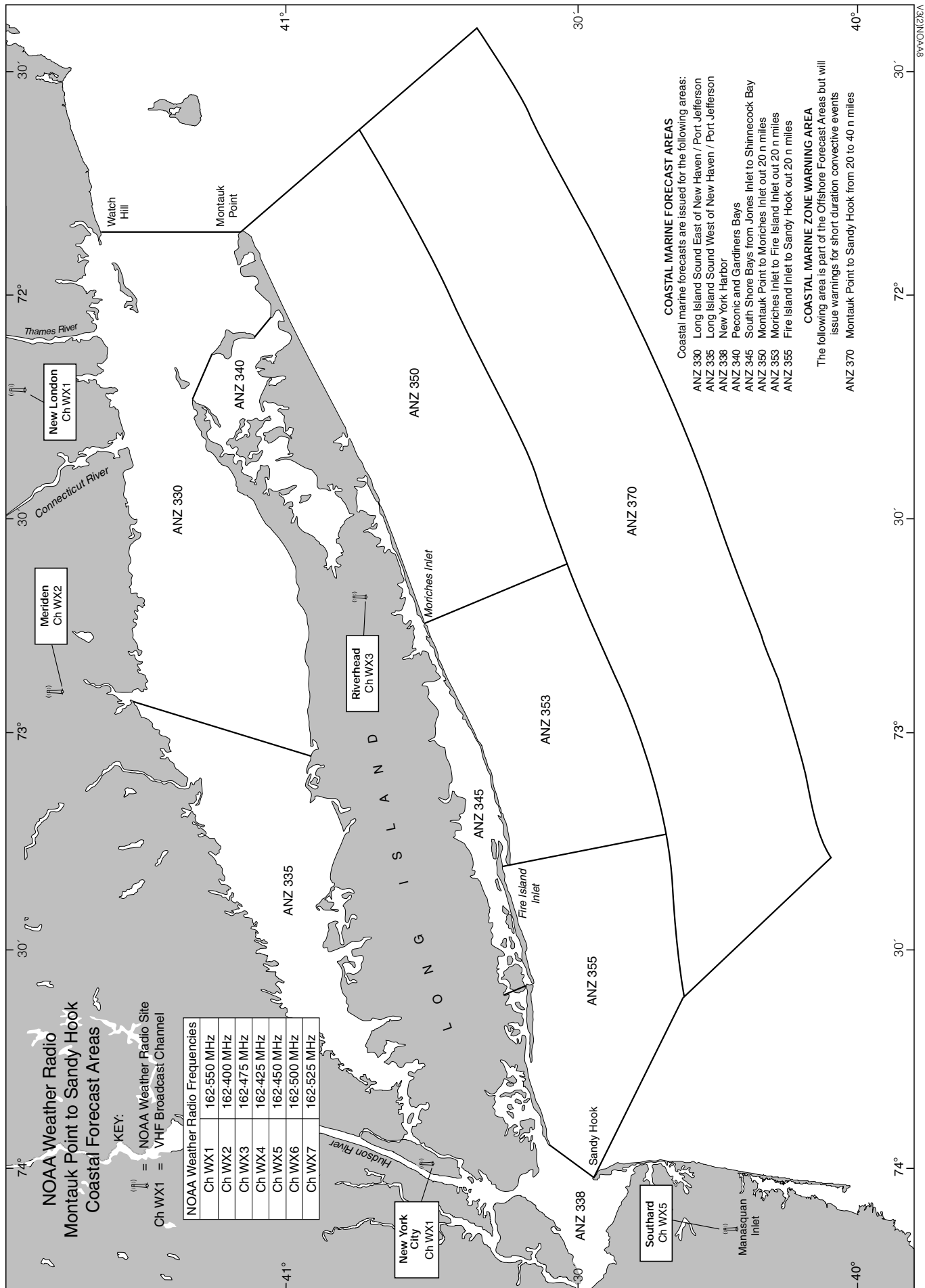
Delete and replace by diagram on page 35

NOAA Ad13/07

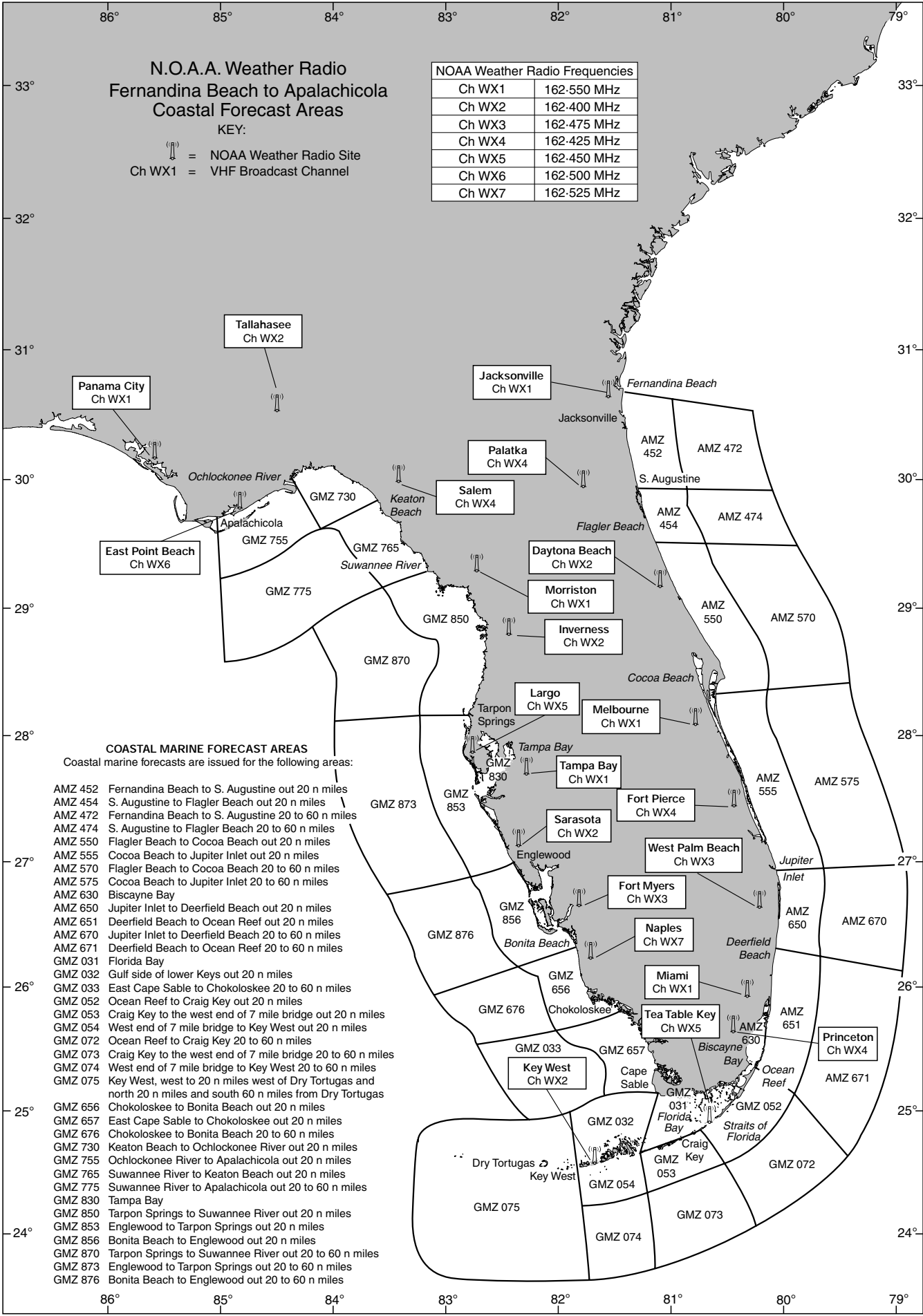
Page 220, diagram, N.O.A.A. WEATHER RADIO, FERNANDINA BEACH TO APALACHICOLA, COASTAL FORECAST AREAS.

Delete and replace by diagram on page 36

NOAA Ad13/07



8VW0N0212EA



VOLUME 5, NP 285, 2006/07

Published BA Wk 24/06
(Last Amendments: Edition No 5 dated 16 March 2007)

CHAPTER 16, DISTRESS, SEARCH AND RESCUE

PAGES 354 & 355, ITALY.
Delete entry and replace by:

ITALY

See diagram R5

National SAR Agency: Comando Generale del Corpo delle Capitanerie di Porto - Guardia Costiera Address: Viale dell'Arte 16, 00144, Roma, Italy Tel: +39 06 5923569 & 06 5924145 Fax: +39 06 5922737 & 06 59084793 Telex: +43 611172 & +43 614156 E-mail: cgcp3rep4@infrastrutturetrasporti.it & centraleoperativa1@libero.it Website: www.guardiacostiera.it			
MRCC Rome is responsible for co-ordinating Search and Rescue operations within Italian waters and liaising with RCCs of other nations. A network of Coast Radio Stations maintains a continuous listening watch on international distress frequencies.			
	Telephone +39	Fax +39	Others
MRCC ROME	06 5923569 06 5924145 06 59084527 06 59084697	06 5922737 06 59084793	Telex +43 614156 COGECAP I +43 611172 COGECAP I Inmarsat C (AOR-E) 424744220 Inmarsat Mini M (AOR-E) 762970685 762970686 E-mail cgcp3rep4@infrastrutturetrasporti.it
MRSC ANCONA	071 227581 071 502101	071 55393 071 50210209	E-mail ancona@guardiacostiera.it cp.anc@virgilio.it 7mrscancona@libero.it
MRSC BARI	080 5216860 080 5281544 080 5281546	080 5211726	E-mail bari@guardiacostiera.it
MRSC GENOVA	010 2412222 010 2777384 010 2777385 010 2777387 010 2777388 010 27771	010 2777386 010 2777427 010 261064	E-mail mrsc@cpgenova.it
MRSC LIVORNO	0586 8260 0586 826069 0586 826070 0586 893362 0586 894493 0586 826011	0586 826090	E-mail livorno@guardiacostiera.it
MRSC NAPOLI	081 2445111 081 5536017 081 2445308	081 2445435 081 2445347	E-mail 4_mrsc@libero.it
MRSC PESCARA	085 694040	085 4510117	E-mail pescara@guardiacostiera.it
MRSC RAVENNA	0544 443013 0544 443011	0544 447498	E-mail ravenna@guardiacostiera.it
MRSC REGGIO CALABRIA	0965 6561 0965 650090 0965 656268	0965 656333	E-mail reggiocalabria@guardiacostiera.it
MRSC ROME	06 656171 06 65617326 06 65617349 06 65617376	06 65617303 06 65617312	E-mail roma@guardiacostiera.it
MRSC TRIESTE	040 676611 040 676612 040 676677 040 676616	040 676665	E-mail trieste@guardiacostiera.it
MRSC VENEZIA	041 2405711 041 2405745	041 2405730	E-mail gcvenezia@infrastrutturetrasporti.it

(Continued on next page)

Sardegna

	Telephone +39	Fax +39	Others
MRSC CAGLIARI	070 659210 070 659225	070 60517218	E-mail cagliari@guardiacostiera.it

Sicilia

	Telephone +39	Fax +39	Others
MRSC CATANIA	095 7474111 095 538888	095 533962	E-mail catania@guardiacostiera.it
MRSC PALERMO	091 331538 091 6043110 - 165 091 6043111	091 325519 091 327213	E-mail palermo@guardiacostiera.it gcpalermo@infrastrutturetrasporti.it

(former amendment 36/06)
Ministero Dei Trasporti Ad13/07

PAGE 359, MALAYSIA.
Delete entry and replace by:

MALAYSIA

See diagram R14

National SAR Agency: Malaysian Maritime Enforcement Agency Address: Prime Minister's Department, 4-11th Floor, One IOI Square, IOI Resort, 62502 Putrajaya, Malaysia Tel: +60 3 89413140 Fax: +60 3 89413129 E-mail: mrccputrajaya@mmea.gov.my			
The Malaysian Maritime Enforcement Agency is responsible for co-ordinating Search and Rescue operations. A network of stations monitor VHF and MF DSC and 2182 kHz and VHF Ch 16.			
	Telephone +60	Fax +60	Others
MRCC PUTRAJAYA	3 89413140	3 89413129	E-mail mrccputrajaya@mmea.gov.my

Peninsular Malaysia

	Telephone +60	Fax +60	Others
MRSC JOHOR BAHRU	7 2219231	7 2224739	
MRSC KUANTAN	9 5734066	9 5734177	
MRSC LANGKAWI	4 9665307	4 9669543	

Sabah and Sarawak

	Telephone +60	Fax +60	Others
MRSC KOTA KINABALU	88 429803	88 427075	
MRSC KUCHING	82 367943	82 364941	

Malaysian Maritime Enforcement Agency . Ad13/07

PAGE 385 UNITED STATES OF AMERICA, Northern Mariana Islands.
Delete entry and replace by:

Northern Mariana Islands

	Telephone +1	Fax +1	Other
JRSC GUAM	671 355 4910 671 355 4905 671 564 8724	671 355 4831	E-mail rccguam@uscg.mil

(former amendment 30/06)
United States Coast Guard Ad13/07

VOLUME 6, PART 4, NP 286(4), 2006/07

Published BA Wk 35/06
(Last Amendments: Edition No 6 dated 30 March 2007)

wef 2 April 2007

PAGE 22, AUSTRALIA, GLADSTONE, Queensland, Pilots.

Delete Pilots section and replace by:

Pilots

CONTACT DETAILS:

Call: Gladstone Pilots
VHF Frequency: Ch 16; 10 13
Telephone: +61(0)749 768201
+61(0)749 768203
Fax: +61(0)749 768251

Helicopter

VHF Frequency: Ch 10 13

HOURS: H24

PROCEDURE:

- (1) **Pilotage is compulsory** for the following:
 - (a) All foreign vessels over 35m LOA
 - (b) Australian vessels over 50m LOA
- (2) **Pilotage is not compulsory** for Australian vessels if a valid PEC is held.
- (3) **Notice of ETA:** Vessels should send ETA and maximum draught at least 24h in advance and subsequent amendments should be sent immediately.
- (4) Vessels requiring pilotage (or vessels exempt pilotage) are considered "arrived" vessels for traffic purposes when:
 - (a) Crossing a line 4 n miles radius centred on the Fairway Lt buoy (23°53'15S 151°31'00E)
 - (b) Vessels inform Gladstone Harbour Control of (a) on VHF Ch 13.
- (5) All radio communication for vessels embarking and disembarking a pilot at the pilot boarding area will be carried out on VHF Ch 10.
- (6) Gladstone Harbour Control will advise vessels when they are required to change to VHF Ch 10 prior to pilot boarding.
- (7) Pilot boards in position 23°51'88S 151°32'70E (2 n miles NE of Fairway Lt buoy). Pilot will be transferred by helicopter if vessel suitable, or otherwise by PV.

Queensland Notice 159/2007 Ad13/07

PAGES 114 and 116, CHINA, SHANGHAI.

Delete Pilots, Vessel Traffic Service and Port sections and replace by:

Pilots

CONTACT DETAILS:

Call: North Pilot Station (Beicao Hangdao/North Channel)
South Pilot Station (Nancao Hangdao/South Channel)
VHF Frequency: Ch 06 09 15 16 69
Telephone: +86(0)21 65959175
+86(0)21 65952863
Fax: +86(0)21 65953149
E-mail: pilots@public4.sta.net.cn
Website: www.sh-pilots.com.cn

PROCEDURE:

- (1) **Pilotage is compulsory** and is available H24.
- (2) **Pilot ordering:** Vessels should request pilot and advise ETA via agent 72h before arrival, and update daily with draught, between 0900-1000 LT.
- (3) Vessels may contact North Pilot Station or South Pilot Station on VHF Ch 69 after receiving instructions, and advise ETA at pilot boarding position, LOA and draught.
- (4) Vessels anchored at the Wusong and Baoshan anchorages may contact pilots on VHF Ch 15. *continued on next column*
- (5) **Pilot boards** in the following positions:
 - (a) North Channel (Beicao Hangdao): Area centred on 31°05'N 122°25'E (Pilot Anchorage No 1)
 - (b) South Channel (Nancao Hangdao): Area centred on 31°05'N 122°35'E (Pilot Anchorage No 2)

Vessel Traffic Service

CONTACT DETAILS:

Call: Wusong VTS
Telephone: +86(0)21 56671002
Fax: +86(0)21 56671003

VTS Sector 1 (see diagram SHANGHAI VESSEL TRAFFIC SERVICE)

VHF Frequency: Ch 71

VTS Sector 2 (see diagram SHANGHAI VESSEL TRAFFIC SERVICE)

VHF Frequency: Ch 09

Shanghai MSA

Telephone: +86(0)21 53931419
Fax: +86(0)21 53931420
Website: www.shmsa.gov.cn

HOURS: H24

PROCEDURE:

- (1) **Reporting: Inward-Bound Vessels** should report to Wusong VTS on VHF Ch 09 after weighing anchor at the Chiangjiang Kou (CJK) anchorages, and thence at the following reporting points:
 - (a) **Vessels navigating Beicao Hangdao (North Channel):**
 - (i) CJK Lt Vessel (31°06'11N 122°28'10E) on VHF Ch 09
 - (ii) Between CJK Lt Vessel and Lt buoy D6 (31°05'97N 122°25'22E) on VHF Ch 09
 - (iii) Between Lt buoys D9 (31°06'29N 122°21'18E) and D11 (31°06'28N 122°19'20E) on VHF Ch 09
 - (iv) Lt buoy D42 (31°18'40N 121°45'12E) or Lt buoy D43 (31°18'90N 121°44'39E) on VHF Ch 09
 - (v) Yuanyuansha Lt Vessel (31°19'25N 121°42'15E) on VHF Ch 09
 - (b) **Vessels navigating Nancao Hangdao (South Channel):**
 - (i) Nancao Lt Vessel (31°00'30N 122°28'08E) on VHF Ch 09
 - (ii) Lt buoy S7 (31°02'64N 122°16'40E) on VHF Ch 09
 - (iii) Between Lt buoys S16 (31°05'12N 122°02'20E) and S18 (31°06'33N 121°59'02E) on VHF Ch 09
 - (iv) Jiudian Lt Vessel (31°07'54N 121°55'00E) on VHF Ch 09
 - (v) Yuanyuansha Lt Vessel (31°19'25N 121°42'21E) on VHF Ch 09
 - (c) **Vessels proceeding towards Wusong along the Chang Jiang:**
 - (i) Lt buoy A56 (31°19'60N 121°40'49E) on VHF Ch 71
 - (ii) Lt buoy 60 (31°22'93N 121°34'59E) on VHF Ch 71
 - (iii) Lt buoy 101 (31°23'67N 121°31'54E) on VHF Ch 71
 - (iv) Lt buoy 66 (31°24'86N 121°30'99E) on VHF Ch 71
 - (d) **Vessels proceeding past Wusong towards Baoshan and/or changing to River Pilotage:**
 - (i) Lt buoy 72 (31°27'33N 121°27'18E) on VHF Ch 71
 - (ii) Lt buoy 74 (31°28'73N 121°25'91E) on VHF Ch 71
 - (iii) Baoshan Superbuoy (31°31'98N 121°20'91E) on VHF Ch 71
 - (iv) Lt buoy 84 (31°32'28N 121°19'68E) on VHF Ch 71
- (2) **Outward-bound vessels** should also report at the reporting points stated above.
- (3) Vessels should also send the following reports to Wusong VTS on the appropriate VHF Sector Ch as follows:
 - (a) **Moving Report:**
 - (i) Vessel's name
 - (ii) Name of berth or anchorage
 - (iii) Berth of destination
 - (b) **Completion Report** (when anchoring or securing to a new berth):
 - (i) Vessel's name
 - (ii) Time of anchoring or securing
 - (iii) Name of berth or anchorage

NOTES:

- (1) It is normal practice for the pilot to handle reporting procedures to Wusong VTS.
- (2) It is reported that Nanzhi Hangdao channel is no longer maintained and only vessels of less than 200 MT may navigate this channel.

(Continued on next page)

Port**CONTACT DETAILS:**

VHF Frequency: Ch 16; 06 09 15 27
Telephone: +86(0)21 63290660
Fax: +86(0)21 63290202
Telex: +85 33023 SHACO CN
Website: www.portshanghai.com.cn
www.shanghaiport.gov.cn

Agents (Penavico)

VHF Frequency: Ch 11

Agents (Sinoagent)

VHF Frequency: Ch 74

HOURS: H24

XM Yang, China Ports Agency Ad13/07

PAGE 115, CHINA, SHANGHAI.

Delete diagram SHANGHAI VESSEL TRAFFIC SERVICE and replace with diagram on page 41

XM Yang, China Ports Agency Ad13/07

PAGE 116, CHINA, Liuhekou.

Delete entry.

UKHO Ad13/07

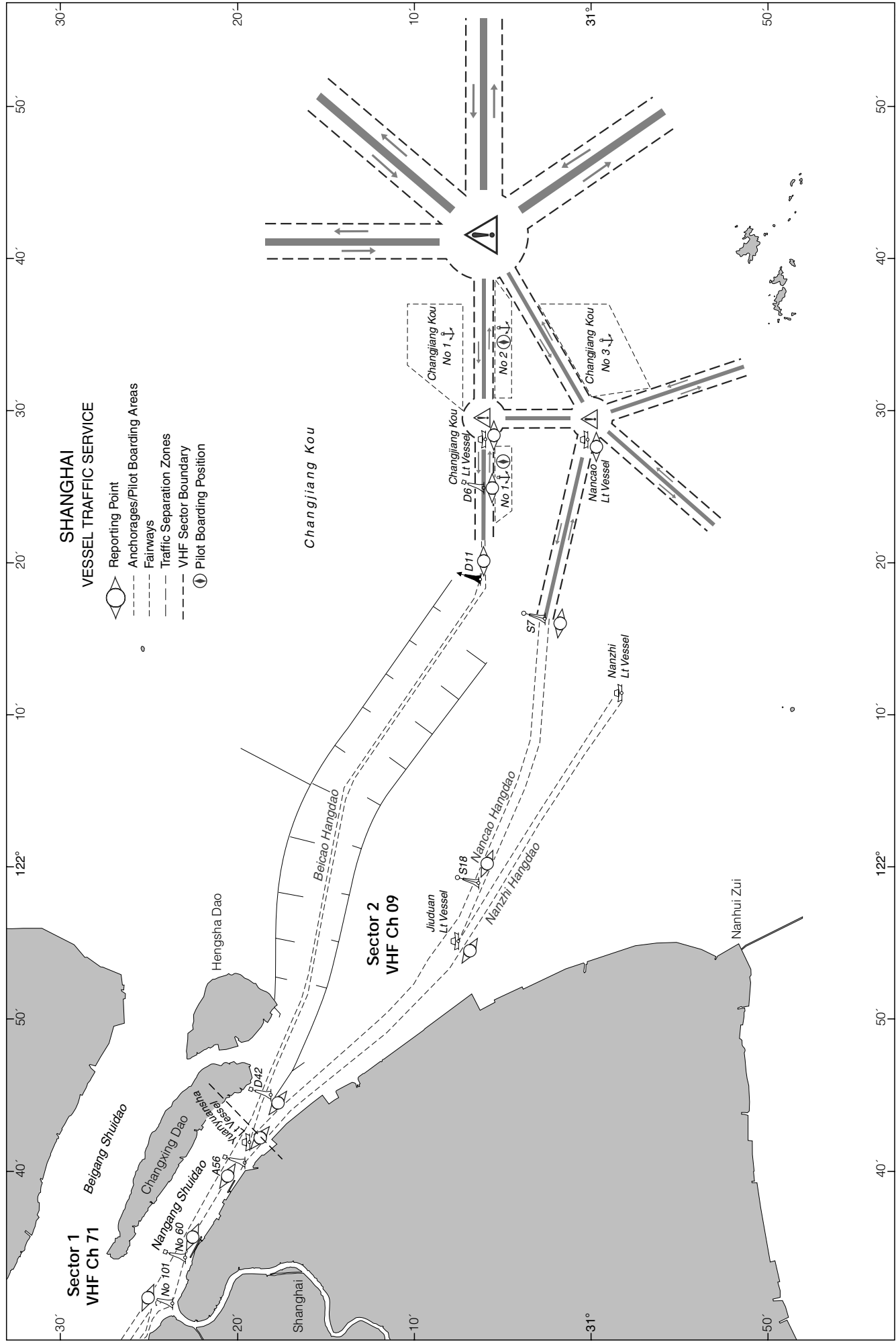
Page 435, VIETNAM, CAN THO, Pilots and Port.

Delete PROCEDURE section and replace by:

PROCEDURE:

Pilot boards in position 9° 29' 17N 106° 30' 83E.

Can Tho Port Authority Ad12/07



ADMIRALTY LIST OF RADIO SIGNALS – CUMULATIVE LIST OF
AMENDMENTS

INTERNATIONAL TELEPHONE / TELEX CODES

34

CORRECT TO BA W13/07

DIAGRAMS

This list is a summary of the entries in the current editions of the Admiralty List of Radio Signals which have had amendments issued in Section VI of the Weekly Edition of Notices to Mariners.

The entries affected are shown in bold type followed by the numbers of the Weekly Editions in which amendments for that station were issued.

These summaries are issued on a quarterly basis.

VOLUME 1, PART 2, NP 281(2), 2006/07

Published BA Wk 26/06

GLOBAL COMMUNICATION NETWORKS

2007: 6, 10

MARITIME RADIO STATIONS

AUSTRALIA 34, 52
 BRAZIL 2007: 9
 CANADA 30
 CANADA (Arctic Coast, Atlantic Coast and Saint Lawrence River) 26, 30
 CANADA (Great Lakes) 30
 CANADA (Pacific Coast) 30, 33, 35
 CHILE 33, 39
 CHINA 35, 2007: 5, 7
 COOK ISLANDS (NZ) 44
 ECUADOR 31
 FALKLAND ISLANDS 2007: 3
 GREENLAND (Denmark) 31, 34
 GUAM (NORTHERN MARIANA ISLANDS - USA) 32
 ÎLES DE LA SOCIÉTÉ, POLYNÉSIE FRANÇAISE (France) 50
 JAPAN 51
 KOREA, SOUTH 26, 2007: 10
 MALAYSIA (PENINSULAR) 2007: 13
 MALAYSIA (SABAH AND SARAWAK) 2007: 13
 NEDERLANDSE ANTILLEN 26
 NEW ZEALAND 50
 NOUVELLE-CALÉDONIE (France) 50
 PERU 43
 PHILIPPINES 31
 PUERTO RICO (USA) 32
 SOLOMON ISLANDS 26
 TAIWAN 31
 THAILAND (East Coast) 44
 UNITED STATES (Alaska) 32
 UNITED STATES (Atlantic Coast) 32
 UNITED STATES (Gulf Coast) 32
 UNITED STATES (Hawaii Coast) 32
 UNITED STATES (Pacific Coast) 32, 42, 50
 URUGUAY 36
 VENEZUELA 2007:11
 VIETNAM 43

RADIO QUARANTINE REPORTS FROM VESSELS AT SEA

26, 30, 34, 36, 45, 48

POLLUTION REPORTS BY RADIO

38, 50

SHIP REPORTING SYSTEMS

26, 36

GENERAL RADIO REGULATIONS

30

(Page 48) AUSTRALIA, TELSTRA'S SEAPHONE NETWORK, (VHF RADIOTELEPHONE) 52
 (Page 51) BERMUDA & CARIBBEAN, MARITIME RADIO STATIONS, MRCC & MRSC 26, 2007: 11
 (Page 55) BRAZIL - NORTH, AMAZONAS TO ARQUIPELAGO DE FERNANDO DE NORONHA, MARITIME RADIO STATIONS, MRCC 2007: 9
 (Page 56) BRAZIL - EAST, NATAL TO CABO FRIO, MARITIME RADIO STATIONS, MRCC 2007: 9
 (Page 57) BRAZIL - SOUTH, RIO DE JANEIRO TO RIO GRANDE, MARITIME RADIO STATIONS, MRCC 2007: 9
 (Page 62) CANADIAN COAST GUARD, MARINE COMMUNICATIONS & TRAFFIC SERVICE CENTRES (MCTS), ATLANTIC AND NEWFOUNDLAND 30
 Page 63) CANADIAN COAST GUARD, MARINE COMMUNICATIONS & TRAFFIC SERVICES CENTRES (MCTS), GULF OF S. LAWRENCE AND NEWFOUNDLAND 30
 (Page 66) CANADIAN COAST GUARD, MARINE COMMUNICATIONS & TRAFFIC SERVICE CENTRES (MCTS), S. LAWRENCE RIVER 30
 (Page 76) CANADIAN COAST GUARD, PACIFIC REGION NETWORK, MARINE COMMUNICATIONS & VESSEL TRAFFIC SERVICE CENTRES, PRINCE RUPERT 30
 (Page 77) CANADIAN COAST GUARD, PACIFIC REGION NETWORK, MARINE COMMUNICATIONS & VESSEL TRAFFIC SERVICES CENTRES, VANCOUVER 30
 (Page 82) CHILE, MARITIME SEARCH AND RESCUE REGIONS (SRR) AREA RADIO STATIONS, MRCC & MRSC, CHILE TMAS 33, 39
 (Page 83) CHILE, MARITIME RADIO STATIONS, MRCC & MRSC, ARICA TO PUERTO CALDERA 33, 39
 (Page 84) CHILE, MARITIME RADIO STATIONS, MRCC & MRSC, PUERTO HUASCO TO VALPARAÍSO 33, 39
 (Page 85) CHILE, MARITIME RADIO STATIONS, MRCC & MRSC, TALCAHUANO TO ISLA CHILOÉ 33, 39
 (Page 86) CHILE, MARITIME RADIO STATIONS, MRCC & MRSC, ISLA GUAFO TO PUERTO EDEN 33
 (Page 87) CHILE, MARITIME RADIO STATIONS, MRCC & MRSC, ESTECHO DE MAGALLANES AND ISLA GRANDE DE TIERRA DEL FUEGO 33
 (Page 108) CHINA, HAINAN DAO TO SHANTOU AND TAIWAN STRAIT, MARITIME RADIO STATIONS, MRCC 35, 2007: 5
 (Page 110) CHINA, BO HAI, LIAODONG WAN AND YELLOW SEA COAST, MARITIME RADIO STATIONS, MRCC 2007: 5
 (Page 129) SOUTH PACIFIC, WESTERN PART, MARITIME RADIO STATIONS, MRCC & MRSC 50
 (Page 133) GREENLAND, MARITIME RADIO STATIONS, ISLAND COMMANDER GREENLAND 31
 (Page 169) JAPAN HOKKAIDO COAST GUARD RADIO 51
 (Page 170) JAPAN HONSHU COAST GUARD RADIO 51
 (Page 171) JAPAN SOUTH COAST GUARD RADIO 51
 (Page 172) JAPAN OKINAWA COAST GUARD RADIO 51
 (Page 181) KOREA (SOUTH), MARITIME RADIO STATIONS, MRCC 2007: 10
 (Page 185) MALAYSIA & SINGAPORE MARITIME RADIO, MRCC & MRSC 2007: 13
 (Page 188) SABAH & SARAWAK, MARITIME RADIO STATIONS, MRCC & MRSC 2007: 13
 (Page 198) NEW ZEALAND, TAUPO MARITIME RADIO, MRCC, VHF MARITIME RADIO REMOTE SITES 50
 (Page 205) CENTRAL AMERICA (PACIFIC COAST), COLOMBIA, ECUADOR, AND PERU 31, 43
 (Page 225) UNITED STATES, GULF OF ALASKA, WEATHER SERVICE OFFICES (WSO), US COASTGUARD 32
 (Page 229) UNITED STATES (ATLANTIC COAST), US COASTGUARD 32
 (Page 239) UNITED STATES (PACIFIC COAST) MARITIME RADIO STATIONS, US COASTGUARD 32
 (Page 244) URUGUAY, MARITIME RADIO STATIONS VHF NETWORK CONTROLLED BY PUNTA CARRETAS, MONTEVIDEO ARMADA RADIO MMSI 007703870, MRCC 36
 (Page 250) VIETNAM - NORTH, MARITIME RADIO STATIONS 43
 (Page 259) AUSTRALIA, AUSTRALIAN QUARANTINE AND INSPECTION SERVICE (AQIS) 36, 48

VOLUME 2, NP 282, 2007/08

Published BA Wk 13/07

RADAR BEACONS

53480 13	78955 13	81952 13	86060 13	94120 13
54947 13	79075 13	82287 13	86580 13	94895 13
54950 13	79860 13	82302 13	87690 13	95535 13
55745 13	81170 13	82335 13	87940 13	95558 13
60150 13	81504 13	82395 13	91520 13	95675 13
67715 13	81524 13	82417 13	91760 13	95925 13
67980 13	81633 13	82715 13	91765 13	96140 13
70610 13	81641 13	82725 13	91770 13	97145 13
70770 13	81773 13	82892 13	91815 13	98190 13
70780 13	81825 13	82905 13	91885 13	98240 13
73860 13	81880 13	85825 13	92940 13	
73870 13	81944 13	85860 13	93220 13	

LEGAL TIME

13

ELECTRONIC POSITION FIXING SYSTEM

13

VOLUME 3, PART 2, NP 283(2), 2007/08

Published BA Wk 3/07

MARITIME SAFETY INFORMATION

13

NAVTEX

8

RADIO-FACSIMILE

13

RADIO WEATHER SERVICES AND NAVIGATIONAL WARNINGS

ARGENTINA 5, 8
 AUSTRALIA 3, 6
 CHINA 3
 JAPAN 3, 10
 NEW ZEALAND 3
 TRINIDAD AND TOBAGO 3
 UNITED STATES (Pacific Coast) 3
 URUGUAY 11

SHIPS WEATHER REPORTS

10

ICE REPORTS

4

DIAGRAMS

(Page 42) NAVTEX - MSI BROADCASTS, South America - Pacific Ocean 5, 8
 (Page 43) NAVTEX - MSI BROADCASTS, South America - Atlantic Ocean 5, 8
 (Page 107) AUSTRALIA, MSI BROADCASTS 3, 6
 (Page 217) NOAA WEATHER RADIO, Montawk point to Sandy Hook Coastal Forecast Areas 13
 (Page 220) NOAA WEATHER RADIO, Fernandina Beach to Apalachicola, Coastal Forecast Areas 13

VOLUME 5, NP 285, 2006/07

Published BA Wk 24/05

GLOBAL MARITIME DISTRESS AND SAFETY SYSTEM (GMDSS)

Chapter 3: COMMUNICATIONS SYSTEMS FOR USE IN THE GLOBAL SYSTEM 24, 25, 27, 30, 33, 40, 2007: 1
 Chapter 9: VHF DSC, LIST OF COAST STATIONS FOR SEA AREA A1 26, 27, 30, 38, 40, 49
 Chapter 10: MF DSC, LIST OF COAST STATIONS FOR SEA AREA A2 24, 40, 48, 2007: 4
 Chapter 12: INMARSAT 24, 27, 41, 48, 2007: 6, 9
 Chapter 13: MARITIME SAFETY INFORMATION (MSI) UNDER THE GMDSS 24, 25, 30, 34, 35, 39, 41, 44, 45, 2007: 3
 Chapter 14: SAFETYNET 24
 Chapter 15: NAVTEX 24, 27, 30, 32, 33, 34, 37, 38, 39, 40, 42, 46, 47, 48, 50, 2007: 2, 3, 5, 7, 8
 Chapter 16: DISTRESS, SEARCH AND RESCUE 24, 25, 27, 30, 31, 33, 34, 35, 36, 38, 39, 40, 42, 44, 46, 47, 48, 49, 50, 2007: 3, 6, 7, 13

DIAGRAMS

(Page 172) Digital Selective Calling, Limits of Sea Areas Diagram R7-A 2007: 4
 (Page 174) Digital Selective Calling, Limits of Sea Areas Diagram R8-A 2007: 4
 (Page 176) Digital Selective Calling, Limits of Sea Areas Diagram R10-A 24
 (Page 178) Digital Selective Calling, Limits of Sea Areas Diagram R12-A 24
 (Page 183) Digital Selective Calling, Limits of Sea Areas Diagram R15-A 40
 (Page 273) NAVTEX - MSI BROADCASTS, North Atlantic - East 33, 47
 (Page 274) NAVTEX - MSI BROADCASTS, Mediterranean and Black Sea 32 2007: 2
 (Page 277) NAVTEX - MSI BROADCASTS, Canada and USA, Atlantic and Pacific Oceans 42
 (Page 278) NAVTEX - MSI BROADCASTS, South America - Pacific Ocean 42, 2007: 5, 8
 (Page 279) NAVTEX - MSI BROADCASTS South America - Atlantic Ocean 33, 2007: 5, 8

(Continued on next page)

VOLUME 6, PART 4, NP 286(4), 2006/07

Published BA Wk 35/06

PILOT SERVICES, VESSEL TRAFFIC SERVICES and PORT OPERATIONS

AUSTRALIA 35, 36, 2007: 9, 13
CHINA 35, 37, 47, 51, 2007: 6, 7, 9, 13
INDIA 35
INDONESIA 35, 50
KOREA, SOUTH 40, 48, 2007: 9, 10
NEW CALEDONIA (NOUVELLE-CALÉDONIE) (France) 51
NEW ZEALAND 50
PHILIPPINES 41
VIETNAM 39, 2007:12

DIAGRAMS

(Page 47) **AUSTRALIA, TORRES STRAIT PILOTAGE AREA** 36
(Page 77) **CHINA, DALIAN WAN VESSEL TRAFFIC SERVICE AND DAYAO WAN TRAFFIC CONTROL** 37
(Page 78) **CHINA, DALIAN WAN VESSEL TRAFFIC SERVICE** 37
(Page 89) **CHINA, HONG KONG Diagram 1, VESSEL TRAFFIC SERVICES** 35, 47
2007:10
(Page 112) **CHINA, QIONGZHOU HAIXIA (HAI-NAN STRAIT), PILOTS AND VESSEL TRAFFIC SERVICE** 2007: 9
(Page 115) **CHINA, SHANGHAI VESSEL TRAFFIC SERVICE** 2007: 13
(Page 117) **CHINA, YANGSHAN VESSEL TRAFFIC SERVICE** 2007: 9
(Page 119) **CHINA, SHENZHEN VESSEL TRAFFIC SERVICE** 51
(Page 130) **CHINA, YINGKOU, VESSEL TRAFFIC SERVICE** 2007: 9
(Page 258) **KOREA, SOUTH, JINDO VESSEL TRAFFIC SERVICE** 40
(Page 263) **KOREA, SOUTH, PUSAN NEW PORT** 2007: 10
(Page 268) **KOREA, SOUTH, YEOSU, PILOTS AND VESSEL TRAFFIC SERVICE**
2007: 9

SHIP REPORTING SYSTEMS

AUSTRALIA 2007: 5, 8
NEW CALEDONIA (NOUVELLE-CALÉDONIE) (France) 51

AMENDMENTS TO ADMIRALTY SAILING DIRECTIONS 2007

NP 14 Australia Pilot Volume II (2004 Edition)

Victoria - Western Port — Beacons discontinued

127

Paragraph 5.26 5 lines 1-5 *Delete*

Toll Westernport [Ad 13/07]

NP 34 Indonesia Pilot Volume II (2006 Edition)

Jawa - Tanjung Awarawar — Terminal

78

After Paragraph 3.72 2 line 6 *Add*:

Submarine pipeline is laid from the SPM (6°43'S 111°58'E) to the shore at position 6°45'·6S 111°56'·7E. The pipeline is marked on its E side by two light buoys (special). An area in which anchoring is prohibited, exists within 1200 m of the SPM and 200 m either side of the pipeline.

Paragraph 3.72 2 line 7 *Replace by*:

Pilotage is compulsory. The pilot boards close E of the fairway buoy (safe water) (6°38'·4S 111°55'·7E) or from a position within the anchorage.

Paragraph 3.72 3 lines 1-5 *Replace by*:

3 **Directions.** The port is approached from N, passing clear of the fairway buoy (6°38'·4S 111°55'·7E), thence through the seaward approach channel marked by light buoys (lateral). The approach channel, which from light buoys No 4 and 5 is dredged to a depth of 13·5 m with a width of 180 m, continues to the berths.

The SPM (6°43'S 111°58'E) which lies to the E of the approach channel and 4½ miles SSE of the pilot boarding area, is approached from N.

PT Trans Pacific Petrochemical Indotama [Ad 13/07]

Madura — Wrecks

82

After Paragraph 3.99 1 line 4 *Add*:

A dangerous wreck (9 miles ENE).

87

Paragraph 3.152 1 line 2 *Replace by*:

...and a stranded wreck, best seen on the chart, the N coast of Madura is clear of...

93

Paragraph 3.212 2 lines 3-4 *Replace by*:

S of a moored storage tanker (7°17'·3'S 113°21'·4'E), noting a dangerous wreck which lies ¾ miles ESE. Thence:

Indonesian Chart 82 [Ad 13/07]

Kalimantan - Sungai Sampit - Tanjung Bandaran — Light

215

Paragraph 8.49 1 line 1 *Replace by*:1 **Major light:**

Tanjung Bandaran Light (white iron framework structure) (3°10'·1S 113°00'·4E).

Directions. Entry should be made on a rising tide. The...

Indonesian Telegram 61/07 [Ad 13/07]

Sulawesi - Approaches to Makassar — Light withdrawn

265

Paragraph 10.73 3 lines 1-2 *Delete*Paragraph 10.78 1 line 6 *Delete*Paragraph 10.82 1 line 6 *Delete*

268

Paragraph 10.98 2 line 8 *Delete*

270

Paragraph 10.123 1 lines 6-8 *Replace by*:

...entrance to the harbour lies between a reef (5°08'·7S 119°23'·3E) (10.129), extending S from Pulau Lae-lae Besar and the N extremity of Tanjungbunga, a drying sandbank, 4½ cables SE. The N entrance lies between Gosong...

Paragraph 10.126 1 line 8 *Delete*

271

Paragraph 10.129 1 lines 1-4 *Replace by*:

1 The S entrance to the inner roadstead lies between Tanjungbunga (5°09'·S 119°24'·E), a drying sandbank and the S extremity of the reef 4½ cables NW, which is marked by a beacon (starboard hand), and on which Pulau Lae-lae Besar stands. There is a narrow deep channel but depths...

Indonesian Notice 36/279/06 [Ad 13/07]

AMENDMENTS TO ADMIRALTY SAILING DIRECTIONS 2007

NP 44 Malacca Strait and West Coast of Sumatera Pilot (2006 Edition)**Singapore Strait - Singapore -
Pulau Sebarok — Berths**

281

Paragraphs 8.337 - 8.339 Including headings *Replace by:***Pulau Sebarok****8.337**

- 1* Pulau Sebarok (1°12'4N 103°47'7E) contains the two main deep-water oil terminals of Vopak Terminals (Singapore) Pte Ltd, at the S end, and Singapore Petroleum Co Ltd at the N end. The berths, which are approached from Jong Fairway, are situated at the head of a group of T-shaped piers.

A barge pier, 72 m long with a depth of 5.5 m (1990) alongside, for the reception of slop and sludge only; lies on the NW side of the island.

8.338

- 1* **Singapore Petroleum Terminal** comprises berths 1A-1C inclusive; the deepest is Pier 1C, 108 m in length, depth 17.5 m (2001); the longest is Pier 1A, 357 m in length, depth 17.1 m (2001).

8.339

- 1* **Vopak Terminal** comprises berths 2-10 inclusive; the deepest is Pier 5, 309 m in length, depth 17.7 m (2006); the longest is Pier 3, 384 m in length, depth 16.9 m (2006).

Maritime and Port Authority of Singapore [Ad 12/07]

NP 51 New Zealand Pilot (2004 Edition)**South Island - Marlborough Sounds -
Picton Harbour — Light**

125

Paragraph 4.247 line 1 *Replace by:*

- 1* **Caution.** When large vessels are manoeuvring at Picton Wharves, a warning light (quick blue flash) is shown from Waitohi Wharf Head Light.

From a position clear NW of Picton Point (41°15'3S...

New Zealand Notice 3/34/07 [Ad 12/07]

**NP 62 Pacific Islands Pilot Volume III
(2006 Edition)****Hawaiian Islands, Hawaii -
Keauhou Bay — Directions**

268

Paragraph 11.115 2-3 *Replace by:*

- 2* **Directions.** From WSW the line of bearing 069° of Keauhou Bay Light (mast, 6 m in height) (19°34'N 155°58'W) leads towards the bay.

US Chart 19327 [Ad 12/07]

AMENDMENTS TO ADMIRALTY SAILING DIRECTIONS 2007
(in the Australian Charting Area)

In force 24 March 2007

<i>NP No</i>	<i>Page(s)</i>	<i>Title</i>	<i>BA Edition</i>
9	Antarctic		
	3, 253, 255	Antarctic Specially Protected Areas	01/05
	79	Îles Crozet –Île de la Possession – Baie du Marin – Anchorage	52/05
	79	Îles Crozet –Île de la Possession – Baie du Marin – Anchorage	05/07
	80	Indian Ocean, Îles Kerguelen – Mooring regulations	30/06
	125-126	South Georgia – Cape Paryadin – Andrews Rocks	06/06
	141	South Shetland Islands – Elephant Island – Cape Valentine – Depth	24/05
	154	South Shetland Islands – Deception Island – Port Foster – Directions	49/04
	160	Joinville Island Group – Dundee Island – Welchness – Depth; aids to navigation	23/06
	161	Antarctic Sound – Hope Bay – Hut Cove – Rocas Denticuladas – Light beacons	11/05
13	Australia I		
	92	Queensland – Weipa – Anchorages	11/06
	92	Queensland – Weipa - Pilot boarding place	34/05
	111	Northern Territory – Gove Harbour – Light buoys	49/05
	148	Northern Territory – Melville Island – Apsley Strait – Buoyage	33/05
	149	Northern Territory – Darwin – Submarine pipeline; light beacons	11/06
	153	Northern Territory – Darwin – Traffic regulations; light buoys	11/06
	155	Northern Territory – Darwin – Light buoys established	11/07
	158	Northern Territory – Darwin – Berth; light buoy	11/06
	183	Western Australia – Scott Reef – Sandy Islet – Tower	26/06
	205	Western Australia – Lacepede Channel – Racons	26/06
	230	Western Australia – Dampier – Safety exclusion zones	08/07
	232-233	Western Australia – Dampier – Leading lights; directions	04/06
	241	Western Australia – Mary Anne Passage – Corner Shoals – Depth	12/06
	246	Western Australia – North West Cape – Oilfield	21/06
	268	Western Australia – Geelvink Channel – Depth	50/05
	272	Western Australia –Cliff Head – Submarine pipeline; oil production platform	15/06
	280-281, 283-284	Western Australia – Approaches to Fremantle – Depths; pilotage; directions	43/05
	314	Western Australia – Hopetoun – Mary Anne Haven – Beacons	47/05
	333	South Australia – Thevenard – Light beacon	24/06
	336	South Australia – Streaky Bay – Aids to navigation	23/06
	347	South Australia – Thistle Island – Light buoy	08/06
	362, 364, 366	South Australia – Whyalla to Port Pirie – Pilotage	33/05
	364	South Australia – Port Bonython – Restricted areas	22/06
	383-384, 386-388	South Australia – Adelaide – Leading lights; pilot boarding area; port limits	38/06
	386, 389	South Australia – Adelaide – Depth; leading beacons	11/06
	392	South Australia – Port Giles – Depths	50/05
	394	South Australia – Ardrossan – Depths	35/06
14	Australia II		
	86-87	Victoria – Port Campbell – Platform; production wells; submarine gas pipelines	20/06
	102	Victoria – Port Phillip – South Channel – Wrecks	49/05
	102-104	Victoria – Port Phillip – West Channel – Lights	28/06
	108	Victoria – Port of Geelong – Regulations concerning entry	16/06
	117-119	Victoria – Port of Melbourne; Port Phillip – Traffic regulations; by-pass channel	06/06
	117	Victoria – Port Phillip – Prohibited anchorage and fishing area	09/05
	127	Victoria – Western Port – Beacons discontinued	13/07
	147-148, 150-151, 153	Victoria – Corner Inlet; Port Albert – Pilotage	10/05
	241	Tasmania – Blackman Bay – Denison Canal – Depths; directional light	04/06
	247	Tasmania – Blackman Bay – Marion Narrows – Depth; leading lights	52/05
	247	Tasmania –Marion Narrows – Light beacon altered	07/07
	253	Tasmania –Boat Harbour Point – Shoal	08/07
	282-284	New South Wales – Port Kembla – Traffic regulations	32/06
	284-285	New South Wales – Port Kembla – Leading lights	41/06
15	Australia III		
	4, 367	Queensland – Torres Strait and approaches – Pilotage	40/06
	95	New South Wales – Lake Macquarie – Leading lights	06/06
	136	Queensland – Brisbane –Controlling depths; underkeel clearances	11/07
	136	Queensland – Moreton Bay – East Channel – Depth	08/06
	140	Queensland – Brisbane River – Eagle Farm Flats Reach – Leading lights discontinued	24/06
	203	Queensland – Hay Point – Restricted area; aid to navigation	38/06
	204, 206-207	Queensland –Flat Top Island – Light discontinued	06/07
	217	Queensland – Hillsborough Channel – Fantome Rocks – Depth	05/06
	228	Queensland – Shute Harbour– Prohibited anchorage	14/06
	252	Queensland – Townsville – Breakwater Marina Channel – Depth	04/06

<i>NP No</i>	<i>Page(s)</i>	<i>Title</i>	<i>BA Edition</i>
	260	Queensland – Mourilyan Harbour – Depth	04/06
	295	Queensland – Eden Reef – Racon	27/06
	312	Queensland – Fairway Reef – Wreck	04/06
	318	Queensland – Clerke Island – Light	36/06
	339, 341-343	Papua New Guinea – Round Hill Anchorage to Cloudy Bay – Beacons discontinued	50/06
	344, 348	Papua New Guinea – Port Moresby to Round Hill Anchorage – Beacons discontinued	03/07
	377-378	Queensland – Torres Strait – Gannet Passage; Herald Patches – Depths; buoyage	04/06
	377	Queensland – Torres Strait – Gannet Passage – Depth	06/06
	377, 380	Queensland – Varzin Passage – Light buoys	48/06
	378	Australia – Torres Strait – Alert Patches – Light buoy altered	50/06
	383	Torres Strait – Goods Island – Bertie Bay Anchorage – Obstruction	16/06
33	Philippine Islands		
	68	Sulu Sea – Tabbataha Reefs – Dangerous rock; marine reserve	04/06
	125	Sulu Sea – San Miguel Islands – Don Juan de Austria Shoal – Rock	48/05
	404-406	Cebu Harbour and approaches – Port development; depths	09/06
	475	Luzon, East Coast – Tabaco – Wrecks	30/06
34	Indonesia II		
	78	Jawa – Tanjung Awarawar – Terminal	13/07
	82, 87, 93	Madura – Wrecks	13/07
	215	Kalimantan – Sungai Sampit – Tanjung Bandaran – Light	13/07
	265, 268, 270-271	Sulawesi – Approaches to Makassar – Light withdrawn	13/07
35	Indonesia III		
	74	East Timor – Dili – Leading lights; beacon	32/06
	183	Irian Jaya, South Coast – Approaches to Merauke – Wreck	05/06
	203	West coast of Papua – Salawati – Buoyage; Misool marine terminal	01/07
36	Indonesia I		
	52	Indonesia – Selat Sunda – Platform; depth	35/06
	69	Sumatera, South Coast – Teluk Lampung – Panjang – Dangerous wreck; obstruction	38/05
	81	Jawa, North Coast – Pulau-Pulau Tidung – Wreck	32/05
	127	Sumatera, East Coast – Pulau Saya – Light	44/05
	144-146	Pulau Bangka, East Coast – Karang Elliot – Light	28/05
	144	Pulau Bangka, East Coast – Sungai Baturusa – Leading lights	28/05
	150-151	Selat Karimata – Karang Ontario – Rock; uncharted dangers	30/06
	151	Kalimantan, West Coast – Selat Karimata – Wreck	03/06
	152	Kalimantan, West Coast – Shoal depths; off-lying dangers	42/05
	211	Singapore Strait – Sambu approaches – Wreck	10/06
39	South Indian Ocean		
	2	Tsunami	03/05
	74	Comores – East coast of Anjouan – Reef	17/06
	75	Comores – Ile de Mayotte – Navigation restriction	21/06
	79	Comores – Ile de Mayotte – Anchorage	04/06
	178	Madagascar – Toamasina (Tamatave) and approaches – Pilotage	21/05
	245-248	Seychelles – Victoria and approaches – Anchorages; directions; berth	23/05
	246-247	Seychelles – Victoria and approaches – Radio masts	43/05
	252, 254-255	Île de La Réunion – Port Réunion – Anchorages; regulations	41/04
	257	Île de La Réunion – Port Réunion – Directional light	42/06
44	Malacca Strait and West Coast of Sumatera		
	65, 67, 186	Malacca Strait Approaches – Permatang Sedepa (One Fathom Bank) north westwards – Light buoy, light beacon	05/07
	70-72, 128, 208	Malacca Strait – Permatang Panjang – Light, buoy, wreck	30/06
	71-72	Malacca Strait – Water Islands southwestwards – Wreck, buoyage	30/06
	96	Sumatera – East coast – Tanjung Jamboaye eastwards – Platform	01/07
	105-107	Sumatera – Belawan approaches – Lights, buoyage	39/06
	151	Thailand – West coast – Ko Tarutao southeastwards – Wreck	04/07
	181	Malacca Strait – Pulau Tukun Perak – Rock	11/07
	247, 249	Singapore Strait - Singapore – Anchorages	30/06
	249	Singapore Strait - Singapore – Anchorages	07/07
	274-275	Singapore Strait - Singapore – Marina Bay and Kallang Basin – Closure to traffic	32/06
	281	Singapore Strait - Singapore – Pulau Sebarok – Berths	12/07

<i>NP No</i>	<i>Page(s)</i>	<i>Title</i>	<i>BA Edition</i>
51	New Zealand		
	51	North Island – Cape Reinga to The Bluff – Pandora Bank – Natural conditions	23/05
	87	South Island – Golden Bay – Tarakohe Harbour – Restricted area	39/05
	104, 111	North Island – Approaches to Wellington – Taputeranga Island – Wreck	07/06
	125	South Island – Marlborough Sounds – Picton Harbour – Light	12/07
	197	North Island – Bay of Islands – Pilot boarding position	16/06
	202	North Island – Bay of Islands – Opuā – Directions; leading lights	32/05
	228	North Island – Hauraki Gulf – Motuihe Channel – Fast ferry zone	26/05
	228	North Island – Motuihe Channel – Emu Rock – Light beacon	31/05
	232	North Island – Approaches to Auckland – Pilot boarding position	48/06
	239	North Island – Waiheke Island – Marine reserve	43/05
	253	North Island – Mercury Bay – Approaches to Whitianga – Sandbar	39/05
	278	North Island – Hawke Bay – Approaches to Napier – Whirinaki Bluff – Light	49/05
	280-281, 283	North Island – Napier Roads – Leading lights discontinued; sector lights	41/06
	283-284	North Island – Napier – Inner Harbour – Leading lights	01-02/06
60	Pacific Islands I		
	3	Navigational Aids – Beacons – Cyclonic damage	13/04
	110	Solomon Islands – New Georgia Island – Viru Harbour – Leading beacons; beacons	35/04
	183, 203	Papua New Guinea – Bright Island Passage; Shortland Reef – Lights	47/05
	200	Papua New Guinea – Raven Channel – Light beacons	30/05
	201	Papua New Guinea – South-West approaches to Raven Channel – Danu-gedu Reef – Light beacon	30/05
	201-202, 204-205	Papua New Guinea – Approaches to Goschen Strait – Directions	45/05
	201	Papua New Guinea – Hibwa Island – Light beacon	30/05
	201	Papua New Guinea – Raven Channel – Diligaoli and Taori-Namu Reefs – Light beacons	30/05
	206	Papua New Guinea – Goschen Strait – Gallows Reef – Light beacon	33/05
	349	Caroline Islands – Pikelot Island – Tarang Reef – Obstruction; depth	10/05
	369	Rota Harbour and Sosanlagh Bay – Chimney	35/06
	370	Marianas Islands – Siapan Harbour – Dredged depth	13/05
	371	Northern Marianas Islands – Siapan harbour approach – Shoal	13/04
	387	US Code of Federal Regulations – Naval vessel protection zones	44/06
61	Pacific Islands II		
	451	Tarawa – Betio northwards – Wreck	10/07
62	Pacific Islands III		
	95	Îles de Rapa – Baie d’Ahurei – Depth	04/07
	152	Polynésie Française– Tahiti – Passe de Taapuna – Submarine pipeline	10/07
	171	Îles de la Société – Île de Moorea – Regulations	01/07
	197	Îles Sous-le-Vent – Raiatea – Port d’Uturoa – Depth	32/06
	268	Hawaiian Islands, Hawaii – Keauhoa Bay – Directions	12/07
	316	Hawaiian Islands, Oahu – Waimanalo Bay – Depths	09/07
	356	US Code of Federal Regulations – Naval vessel protection zones	44/06
100	The Mariner’s Handbook		
	2	Australian and New Zealand charts	25/05
	4	International charts – International boundaries and national limits	37/05
	6	Electronic chart display and information system	29/05
	6	Electronic navigational charts – Updating	42/05
	6	Electronic navigational charts	29/05
	6	Overlapping ENC’s – Caution	47/06
	30	Interpretation of source data	29/05
	41	Use of moored marks	10/05
	81	Overhead power cables	46/06
	85	Tidal streams – Information on charts	17/06
	250	Glossary – Vertical clearance	17/06
136	Ocean Passages for the World		
	168	Singapore ⇔ Hong Kong – Routes – Low-powered vessels; distance	26/04

[Ad13/07]

To accompany Australian Notice to Mariners 316/2007.

**CUMULATIVE LIST OF AUSTRALIAN
NOTICES TO MARINERS
APRIL 2007**

Prepared by the Australian Hydrographic Service
by direction R. NAIRN
Hydrographer of Australia

CUMULATIVE LIST OF AUSTRALIAN NOTICES TO MARINERS

General Information

1. This list identifies, by its chart number and current edition, each Australian (Aus) navigational chart of the Australian Charting Area (see *Australian Notice to Mariners No 1 of 2007 and Australian Seafarers Handbook AHP20*).
2. Unless a Chart Correction Log (NP 133) is being used to perform a similar function, then, until a new edition is published in October 2007, this list should be corrected up to date from the information given in Section I of successive Editions of Australian Notices to Mariners by:
 - (a) adding new charts, each with its date of publication;
 - (b) amending the dates and deleting the listed Notices to Mariners for charts of which new editions have been published;
 - (c) deleting all reference to charts that have been withdrawn; and
 - (d) adding the numbers of the appropriate Notices to Mariners against each relevant chart.
3. All Notices to Mariners that have affected each chart during the last two years are listed against it. If the chart has not been affected by a notice during that period then the most recent notice, if any, is shown.

The Current Edition of a Chart

4. When a new chart is first published the date of publication is shown in the publication note that appears below the centre of the southern outer border; this date remains unchanged throughout successive new editions. The date of each new edition is printed on the chart a few centimetres to the right of the publication note.
5. A new edition on being published and issued as notified by a Notice to Mariners becomes the current edition and the previous edition is superseded. When a chart is withdrawn as directed by a Notice to Mariners there ceases to be any current edition of it. Withdrawn charts and superseded editions should not be used for navigation, nor should current editions that have not been corrected for relevant Notices to Mariners.
6. Users of this cumulative list are reminded that the authoritative source for information concerning current editions of charts and the corrections that affect them in the Australian Area are Editions of Australian Notices to Mariners.

<i>Chart Number</i>	<i>Current Edition</i>	<i>Notices to Mariners affecting the chart from Edition 7 dated 1 Apr 2005</i>
Aus 4	Mar 1989	2005 -413-493-556- 2006 -124-348-511-849-1025- 2007 -268-
Aus 6	May 2000	2005 -507-678- 2006 -1281-
Aus 13	May 2002	2005 -678- 2006 -168-512- 2007 -133-
Aus 14	Oct 1996	2005 -943- 2006 -168-512-
Aus 15	Jun 1995	2005 -358-944-993-1067- 2006 -260-434-565-1186-
Aus 16	Aug 2001	2005 -678- 2006 -261-
Aus 17	Feb 2001	2005 -678- 2007 -40-
Aus 18	Nov 1995	2005 -678-
Aus 20	Oct 1975	2006 -851-920-
Aus 21	Jan 1992	2002 -154-
Aus 26	Aug 2003	2005 -284-406-640-858-859-892-893-994-996-1068-1069- 2006 -47-81-169-349-389-702-799-852-921-922-970-971-1154-1187-1220-1221-1222- 2007 -312-313-
Aus 28	Aug 2003	2005 -284-406-640-859-892-893-995-996-1069- 2006 -47-81-169-349-389-702-799-921-922-970-971-1154-1187-1221-1222- 2007 -313-
Aus 29	Jan 1997	2005 -240-
Aus 32	Feb 2004	2005 -678-824-895-
Aus 37	Jun 1950	2003 -599-
Aus 40	Jun 1965	2005 -998- 2007 -136-257-
Aus 43	Dec 1944	2006 -515-
Aus 44	May 2003	2005 -285-406-
Aus 45	Mar 1999	2005 -678-
Aus 50	Aug 1973	2005 -947- 2006 -705-
Aus 52	Jan 1988	2005 -862- 2006 -1029-
Aus 53	Aug 1987	2005 -862- 2006 -1029-
Aus 54	May 2003	2005 -548-862- 2006 -127-1119-
Aus 55	May 2002	2005 -678-1071- 2006 -634-
Aus 56	May 2003	2005 -678-
Aus 57	Mar 2005	2005 -510-1072- 2006 -170-351-570-
Aus 58	Mar 2005	2005 -415-456-510-1035-1072-1106- 2006 -170-855-1282-
Aus 59	Nov 1987	2005 -326-327-361-362-415-456-1035-1106- 2006 -855-1282-
Aus 61	Oct 2000	2005 -678- 2006 -573-
Aus 62	Aug 2004	2005 -445-457- 2006 -572-924-
Aus 63	May 1991	2006 -48-221-856-1030-
Aus 64	Feb 2002	2005 -586-1108- 2006 -856-
Aus 72	Apr 1956	2005 -678-
Aus 81	Jan 2005	2005 -328-329-600-683- 2007 -95-
Aus 105	May 1985	2006 -296-800-
Aus 109	Nov 2003	2005 -406-
Aus 110	Jan 1983	2005 -277- 2006 -308-860-
Aus 111	Mar 1997	2005 -513-560-732- 2006 -264-801-858-977- 2007 -42-137-
Aus 112	Jul 2002	2005 -353-826-1054- 2006 -976-1031-1032-1188-1283-
Aus 113	Oct 1986	2005 -826- 2006 -976-1283-
Aus 114	Nov 2003	2005 -512-678-731-732-827- 2006 -264-801-977-1189- 2007 -42-137-193-
Aus 115	Jan 1998	2005 -330-641- 2006 -82-307-437-
Aus 116	Jun 1993	2005 -445-458-561-899-949-950- 2006 -859- 2007 -43-
Aus 117	Sep 2004	2005 -493-512-513-560-731-732-780-827- 2006 -264-706-801-858-976-977-1189-1283- 2007 -42-137-193-
Aus 118	Jun 1983	2005 -733-
Aus 119	Apr 2004	2005 -734- 2006 -265-638-751-861-
Aus 120	Jan 1976	2005 -601- 2006 -438-439-639-707-
Aus 121	Nov 1978	2006 -440-
Aus 125	Feb 1994	2006 -353-
Aus 127	Mar 2001	2005 -720- 2006 -927-
Aus 134	Nov 2002	2005 -363-514-863- 2006 -171-441-642-862-
Aus 136	Apr 2000	2005 -277-287-364-515-516- 2006 -223-753-979-1226- 2007 -138-213-
Aus 137	Aug 1999	2005 -366-406-685- 2006 -172-224-312-926-981-
Aus 139	Oct 2003	2005 -365-562-982-999-1040- 2006 -443-803-866- 2007 -213-
Aus 140	Mar 2001	2006 -807- 2007 -139-
Aus 141	Mar 2001	2005 -720-
Aus 143	May 2003	2005 -289-418-521-1001- 2006 -56-447-448-521-578-811-1156-1190- 2007 -142-
Aus 144	Nov 2001	2005 -289-1001- 2006 -578-647-
Aus 148	May 2002	2005 -720- 2006 -579-
Aus 150	Mar 1995	2005 -319-522- 2006 -176-296-711-757-928-1159-1160- 2007 -143-
Aus 151	Feb 1994	2005 -445-784- 2006 -176-711-1159-1160- 2007 -143-
Aus 152	Jun 1992	2005 -784- 2006 -176-1160-
Aus 154	Mar 1999	2005 -368-418-520-564-644-645-951-1111- 2006 -85-130-174-175- 2007 -44-

<i>Chart Number</i>	<i>Current Edition</i>	<i>Notices to Mariners affecting the chart from Edition 7 dated 1 Apr 2005</i>
Aus 155	Jun 1986	2005-418-493-951-2006-85-174-397-619-648-811-
Aus 157	Jun 1981	2005-277-689-782-829-1002-1003-2006-173-225-226-358-447-449-756-810-1157-1158-2007-142-225-273-
Aus 158	Sep 2004	2005-289-331-783-1001-2006-56-357-578-647-1156-1190-2007-45-
Aus 163	Sep 1993	2005-901-2007-272-
Aus 164	Jun 1999	2005-586-
Aus 167	Mar 1997	2005-736-865-1042-2006-809-
Aus 168	Oct 2002	2005-720-1042-2007-141-
Aus 169	Jan 2005	2005-367-1041-2006-53-54-520-1037-2007-30-98-
Aus 170	Oct 2006	2007-140-271-
Aus 171	Jan 2006	2006-314-519-869-
Aus 172	Sep 2005	2006-52-444-519-808-2007-224-
Aus 173	May 1972	2005-688-2006-869-1035-2007-96-194-270-
Aus 174	Feb 1973	2005-720-2006-869-1036-2007-315-
Aus 176	Jan 2002	2005-517-628-
Aus 177	Aug 2001	2005-720-2006-518-577-
Aus 178	Jun 2002	2005-643-720-2006-575-710-
Aus 179	Jun 2002	2005-519-2006-446-
Aus 181	Aug 1983	2005-332-523-605-1074-2006-579-
Aus 182	Jan 1998	2005-332-525-785-1074-2006-1227-2007-226-
Aus 191	Aug 2004	2006-297-2007-214-
Aus 192	Nov 2003	2005-407-1055-2006-955-1214-
Aus 193	May 2004	2005-320-409-2006-214-296-735-899-900-1018-1078-
Aus 195	Oct 2000	2005-494-720-721-2006-383-427-428-429-682-683-957-1079-
Aus 197	Aug 2001	2005-629-933-2006-347-492-1268-2007-31-
Aus 198	Jun 2005	2005-810-811-852-853-2006-346-493-620-1268-2007-303-
Aus 199	Aug 1996	2005-445-447-448-549-811-882-2006-346-493-620-1268-2007-303-
Aus 200	Dec 1992	2005-495-550-679-766-2006-74-347-384-621-901-902-958-959-2007-304-
Aus 201	Jul 2001	2005-495-548-550-588-2006-901-2007-304-
Aus 202	Jul 2001	2005-277-588-766-2006-74-384-621-958-
Aus 203	Jul 1994	2005-588-630-631-983-2006-902-959-
Aus 204	Mar 2002	2005-449-
Aus 207	Jul 2000	2006-215-216-1141-
Aus 208	Oct 1999	2005-768-934-2006-216-1141-1270-2007-305-
Aus 209	Apr 2001	2005-496-723-2006-385-547-622-
Aus 215	Nov 2002	2005-720-2006-494-787-
Aus 216	Nov 2001	2005-445-722-767-
Aus 217	Feb 2004	2005-353-2006-684-
Aus 219	Aug 2001	2006-1178-2007-32-
Aus 220	Oct 1992	2005-497-586-724-725-2006-687-
Aus 235	Dec 1992	2005-353-451-498-499-500-554-634-2006-39-217-496-548-549-737-789-1019-1112-1179-2007-82-181-
Aus 236	Nov 2006	2007-82-181-182-183-215-
Aus 237	Feb 2000	2005-355-452-552-591-769-1096-2006-117-386-961-1113-
Aus 238	Aug 2006	2006-1113-1114-1115-2007-216-
Aus 241	Jun 1977	2005-411-2006-298-
Aus 242	Jan 2006	2006-431-
Aus 243	Jan 2006	2006-1180-
Aus 244	Oct 1999	2005-279-635-812
Aus 245	Oct 1999	2005-279-812-2006-500-553-
Aus 246	Jan 2006	2006-499-500-1142-2007-306-
Aus 247	May 2006	2006-1272-1274-2007-30-259-260-
Aus 248	Sep 2004	2005-113-
Aus 249	Jul 2005	2005-1062-2006-120-121-250-503-555-623-689-905-964-2007-127-185-
Aus 250	Nov 2005	2006-250-555-623-
Aus 251	May 2005	2005-987-2006-120-964-
Aus 252	May 2005	2005-680-2006-432-906-1181-1182-
Aus 253	May 2005	2006-299-432-906-907-
Aus 254	Jun 2005	2005-813-886-2006-906-1177-
Aus 255	Jul 2005	
Aus 256	May 2005	2005-765-815-2006-122-296-741-792-
Aus 257	Jan 2006	2006-741-791-1022-1081-
Aus 258	Jan 2006	2006-251-
Aus 259	Apr 2006	2006-1147-
Aus 260	May 2005	2007-184-262-
Aus 261	May 2005	2007-126-
Aus 262	Jul 2005	2006-909-1276-2007-128-
Aus 263	May 2001	2006-1276-2007-128-218-

<i>Chart Number</i>	<i>Current Edition</i>	<i>Notices to Mariners affecting the chart from Edition 7 dated 1 Apr 2005</i>
Aus 264	Oct 2001	2005-277-
Aus 268	Jun 2005	2005-814-
Aus 270	May 2005	2005-887-2006-842-966-1215-
Aus 280	Jun 2005	2005-816-938-1027-1028-2006-505-506-742-843-
Aus 281	Jul 2004	2005-353-
Aus 289	Mar 2003	2005-353-682-809-982-1104-2006-79-797-848-1267-2007-38-
Aus 292	Jun 2005	2005-730-941-982-1064-1099-2006-556-1219-1267-1277-1278-2007-88-190-
Aus 293	Jun 1988	2005-729-730-772-941-982-1099-2006-252-1219-1267-1278-
Aus 294	Nov 1988	2005-682-730-982-2006-848-919-1267-2007-92-93-190-
Aus 296	Nov 1988	2005-319-682-809-982-1104-2006-163-167-797-848-1267-2007-38-267-
Aus 299	Feb 1988	2005-586-730-982-1032-2006-252-1219-1267-
Aus 301	Apr 1990	2005-493-682-1104-2006-848-1267-2007-268-
Aus 302	Jun 1992	2005-122-
Aus 303	May 1999	2005-493-2006-46-305-2007-191-
Aus 304	May 2000	2005-720-2007-191-
Aus 305	Jun 1997	2005-319-1066-1105-2006-512-
Aus 306	Jun 2003	2005-1066-2006-163-566-
Aus 308	Sep 2003	2005-548-820-2006-513-633-851-920-1084-2007-192-
Aus 309	Dec 1989	2005-277-406-508-639-820-858-2006-435-851-853-920-2007-192-223-
Aus 310	Nov 2002	2005-765-2006-1224-2007-223-
Aus 311	Nov 2003	2005-277-
Aus 312	Nov 2003	2005-324-
Aus 313	Nov 2003	2005-765-
Aus 314	Sep 2003	2005-285-2006-748-972-
Aus 315	Aug 2001	2005-319-508-
Aus 316	Oct 1990	2005-445-
Aus 317	Jun 2003	2005-285-406-2006-436-
Aus 318	Nov 1989	2005-765-2006-975-
Aus 319	Jun 2006	2007-213-
Aus 320	Dec 1989	2005-765-778-997-2006-567-
Aus 321	Nov 2003	2005-232-
Aus 322	Aug 2003	2005-285-765-997-1034-2006-515-567-
Aus 323	Nov 1995	2005-945-997-998-2006-567-568-704-
Aus 324	Jan 1975	2005-947-2006-704-705-
Aus 325	Nov 1966	2006-569-
Aus 326	Jun 1986	2006-569-1029-2007-30-
Aus 327	Aug 1967	2005-286-1036-2006-48-170-221-571-572-573-2007-94-
Aus 328	Dec 1985	2005-416-457-586-896-1036-1037-2006-48-221-390-572-573-
Aus 329	May 1967	2005-896-2006-390-2007-41-81-
Aus 330	Oct 1968	2006-857-
Aus 331	Sep 1968	2005-1038-2006-857-
Aus 332	May 1988	2005-1039-2006-516-635-786-
Aus 333	May 1990	2005-277-1039-2006-263-786-800-
Aus 334	Oct 2000	2005-548-559-684-826-2006-49-352-786-976-978-1032-1283-
Aus 335	Dec 1988	2006-786-
Aus 336	Aug 1984	2004-540-
Aus 337	Mar 2000	2005-353-899-
Aus 341	Jan 1997	2006-440-639-
Aus 342	Mar 1997	2006-440-640-708-
Aus 343	Jun 1990	2005-765-1110-2006-129-441-640-641-752-2007-213-
Aus 344	Apr 1992	2006-753-754-2007-213-
Aus 345	Mar 1992	2005-319-459-563-735-1000-1110-2006-51-129-441-442-517-619-641-752-754-806-865-925-1034-2007-213-314-
Aus 346	Apr 1992	2005-586-2006-51-619-2007-213-314-
Aus 347	Aug 2001	2005-445-459-2006-982-2007-213-314-
Aus 348	Nov 2001	2005-445-2006-354-355-
Aus 349	Jul 1975	2005-277-687-828-2006-84-313-356-395-
Aus 353	Aug 1967	2005-781-900-2006-518-
Aus 354	Feb 1969	2005-781-2006-518-869-2007-30-96-97-
Aus 355	Nov 1968	2005-277-2006-315-445-645-646-869-1037-2007-30-97-257-271-
Aus 356	Dec 1970	2005-277-369-720-736-2007-195-
Aus 357A	Sep 1983	2005-369-461-524-720-2006-132-266-267-579-1161-1227-
Aus 359	Jan 1992	2005-408-446-606-720-2006-132-249-426-451-580-
Aus 360	Jan 1992	2005-406-408-548-2006-426-956-1078-
Aus 361	Oct 2000	2005-809-2006-296-1269-2007-31-
Aus 362	Feb 1992	2005-548-551-2006-215-1269-
Aus 363	Jan 1992	2005-551-984-2006-686-
Aus 364	Mar 1992	2005-498-2006-495-496-
Aus 365	Sep 1967	2005-493-498-885-1057-1058-2006-496-497-550-738-790-903-1271-2007-34-83-

<i>Chart Number</i>	<i>Current Edition</i>	<i>Notices to Mariners affecting the chart from Edition 7 dated 1 Apr 2005</i>
Aus 366	Jun 1991	2005 -321-322-503-935-1058- 2006 -498-499-500-501-502-738- 2007 -34-83-84-306-
Aus 367	May 2006	2006 -786-841-1275- 2007 -84-85-262-
Aus 371	Jul 1991	2005 -937- 2006 -296-546-906-1144-1183-
Aus 372	Jul 1991	2005 -280-765-1063- 2006 -78-908-
Aus 373	Aug 1984	2005 -277-280-357- 2006 -78-966-1216-
Aus 374	Dec 1984	2005 -282-406-887-1027-1028- 2006 -505-506-546-742-966-
Aus 376	Mar 2006	2006 -546-556-794-798-844-848-915-1152-1267- 2007 -35-36-89-90-189-221-266-308-309-310-
Aus 377	Jun 2006	2006 -740-913-914-916-1267- 2007 -35-36-180-219-257-307-308-309-310-
Aus 378	Mar 1974	2007 -309-
Aus 379	Feb 1974	2005 -856-888- 2006 -166-1217- 2007 -129-
Aus 380	Jul 1986	2005 -888- 2006 -692-1184- 2007 -129-
Aus 381	Aug 1971	2005 -594-636-637-681-889-990-1065-1101- 2006 -44-45- 2007 -257-302-
Aus 382	Jul 1971	2005 -506-1065-1102-1103- 2007 -302-
Aus 383	Nov 1995	2005 -931- 2006 -44-45-255- 2007 -180-257-
Aus 384	Sep 1991	2005 -931-990- 2006 -558-968- 2007 -180-257-
Aus 386	Mar 1992	2005 -890- 2006 -563- 2007 -91-
Aus 387	Mar 1992	2005 -890- 2006 -302-1280-
Aus 388	Nov 1990	2005 -890- 2006 -302-630-631-1280-
Aus 389	May 1968	2005 -555- 2006 -303-631-632-
Aus 395	Mar 1992	2005 -890- 2006 -300-509-560-561-562-696-898-1153- 2007 -302-
Aus 397	Oct 1992	2005 -638- 2006 -508-745- 2007 -37-302-
Aus 399	Jul 1999	2005 -765-
Aus 400	Aug 2003	2005 -765-
Aus 402	Sep 1965	2006 -1085-
Aus 414	Aug 1969	2005 -823-1033- 2006 -126-569- 2007 -269-
Aus 415	Mar 1992	2005 -286-457-945-946-947-997-1036-1037- 2006 -390-567-568-569-573-704-705-1029- 2007 -94-
Aus 416	Mar 1992	2005 -457-1036-1037-1039- 2006 -390-516-573-857-
Aus 417	Sep 2000	2005 -493-1039- 2006 -49-263-516-1033-
Aus 422	Jan 2005	2005 -333-369-461-524-606-720-736-900- 2006 -57-113-266-267-313-395-451-518-576-579-580-645-646-1161-1227- 2007 -96-97-257-
Aus 423	Oct 2000	2005 -408-446-461-606-720- 2006 -249-267-451-580-956-1078-1161-1269- 2007 -257-
Aus 424	Oct 2000	2005 -353-498-551-1057- 2006 -495-496-497-550-686-903-1269-
Aus 426	Feb 1997	2005 -406-454-498-1058-1061- 2006 -40-497-498-500-501-502-738-740-790-904-905-906- 2007 -34-83-84-127-
Aus 442	Jan 1958	2006 -513-566-633-1084-
Aus 444	May 1992	2005 -563-735- 2006 -51-296-441-517-641-806-865-925-1034- 2007 -213-314-
Aus 449	Sep 1993	2005 -628- 2006 -1085-
Aus 450	Nov 1991	2003 -359-
Aus 451	Jan 1992	2005 -765-
Aus 452	Nov 2002	2005 -765-
Aus 454	Oct 1998	2005 -277-
Aus 461	Apr 1992	2005 -638-942- 2006 -492-745- 2007 -37-188-220-
Aus 462	Nov 1992	2005 -638-765-890- 2006 -258-303-564-630-
Aus 487	Jan 2005	2005 -369-720-736- 2006 -57-266-267-313-395-576-579-812- 2007 -257-274-
Aus 502	Dec 1992	2002 -212-
Aus 505	Jul 1965	2005 -406-888-1054- 2006 -1184-1217-
Aus 506	Jan 1987	2006 -692-1184-
Aus 510	Feb 2007	
Aus 511	Feb 2007	
Aus 513	Jan 2007	
Aus 514	Jun 1995	2005 -931- 2006 -255- 2007 -180-257-
Aus 516	Jan 2007	
Aus 517	Jan 2007	
Aus 518	Feb 2002	2005 -809-931- 2006 -43- 2007 -180-257-
Aus 519	Jan 2003	2005 -548-931- 2006 -43-558-693-969- 2007 -180-257-
Aus 520	Jan 2003	2005 -931- 2006 -559-693-969- 2007 -180-
Aus 521	Jan 2003	2005 -776-809- 2006 -559-626-
Aus 522	Jan 2003	2005 -809-
Aus 523	Dec 1991	2005 -323-
Aus 539	Oct 1999	2005 -809- 2007 -37-132-187-302-
Aus 545	Feb 2007	
Aus 547	Jun 1992	2006 -300-509-560-561-562-696-747-796-917-
Aus 554	Feb 2007	

<i>Chart Number</i>	<i>Current Edition</i>	<i>Notices to Mariners affecting the chart from Edition 7 dated 1 Apr 2005</i>
Aus 567	Jan 1968	2005-636-1054-
Aus 568	Aug 1983	2005-1054-1065-1102-2007-302-
Aus 570	Jul 1944	2005-1054-2006-968-
Aus 576	Mar 1983	2005-1054-2006-628-847-
Aus 597	Oct 2006	2007-30-
Aus 600	Feb 2007	
Aus 601	Apr 1999	2005-809-
Aus 602	Mar 2003	2005-809-
Aus 603	Nov 2002	2005-548-
Aus 604	Sep 2006	
Aus 605	Oct 2006	2007-30-
Aus 606	Jun 1991	2005-445-
Aus 607	Jun 1991	2005-445-779-
Aus 608	Jun 1995	2005-277-2006-113-
Aus 609	Jun 1995	2005-809-
Aus 610	Nov 2000	2005-809-2006-113-2007-33-
Aus 611	Oct 1998	2005-809-931-2007-180-
Aus 612	Mar 1996	2005-454-931-2006-296-2007-180-
Aus 613	Mar 2001	2005-809-
Aus 614	Feb 1994	2005-931-2006-504-2007-180-
Aus 615	Mar 2001	2005-809-
Aus 616	Jun 2000	2005-809-931-2007-180-
Aus 617	Mar 2001	2005-770-809-931-2006-1118-2007-180-
Aus 618	May 1999	2005-628-2006-114-
Aus 620	Feb 1978	2001-594-
Aus 621	Mar 2005	2005-888-2006-507-1217-1279-2007-129-
Aus 622	Nov 2004	2005-809-2007-130-264-
Aus 623	Jan 1974	2006-692-1184-
Aus 625	Jun 1963	2005-636-2007-131-
Aus 628	Jul 2000	2005-594-637-857-982-1101-2006-625-
Aus 629	Dec 1970	2005-594-637-819-857-1054-1101-2006-42-625-
Aus 630	Dec 1987	2005-594-637-681-857-889-990-
Aus 631	May 1983	2002-123-
Aus 644	Jan 2003	2005-851-1054-2006-626-
Aus 646	Sep 2001	2006-259-700-1185-1218-
Aus 651	Jan 1970	2006-303-631-
Aus 652	Jan 1945	2006-304-632-
Aus 654	Oct 2005	2005-1054-2006-163-1184-
Aus 662	Sep 1952	2005-1054-2006-628-629-
Aus 663	Mar 1984	2002-268-
Aus 665	Jun 2006	
Aus 666	Mar 1955	2006-256-257-697-
Aus 667	May 1966	2006-257-301-698-
Aus 668	Sep 1985	2002-268-
Aus 674	Jan 1975	2006-300-510-561-562-846-918-1024-
Aus 676	Sep 1979	2005-991-2006-563-
Aus 679	Feb 1978	2006-795-
Aus 680	Jan 1997	2005-595-2006-508-746-795-
Aus 683	Jul 1999	2005-628-
Aus 684	Jul 1999	2005-851-2006-744-
Aus 700	Jul 1994	2005-277-682-730-809-982-1104-2006-220-253-848-1219-1267-2007-38-311-
Aus 701	Jun 1989	2005-493-2006-124-2007-268-
Aus 710	May 1996	2005-851-
Aus 715	Sep 1994	2005-777-2006-163-2007-222-
Aus 716	Sep 1995	2006-566-2007-39-222-
Aus 717	Oct 2003	2005-851-
Aus 720	Aug 2001	2005-493-2006-633-
Aus 721	May 2003	2005-353-820-2006-633-2007-192-
Aus 722	Jun 2003	2005-277-359-858-891-994-1068-2006-702-851-852-853-920-921-922-1220-
Aus 724	Jun 2003	2005-628-
Aus 725	Mar 2003	2005-851-
Aus 726	Apr 2003	2005-190-
Aus 727	Mar 2003	2005-851-2006-514-975-
Aus 728	Mar 2003	2005-586-
Aus 729	Feb 2003	2005-851-
Aus 730	Feb 2003	2005-778-851-1070-
Aus 732	Apr 2003	2005-997-998-2006-567-2007-136-
Aus 733	Jan 2003	2005-851-945-998-2006-568-704-2007-136-
Aus 739	Jun 1986	2006-619-1029-
Aus 740	Jun 1986	2006-634-1029-
Aus 741	Dec 1985	2005-286-2006-170-2007-94-

<i>Chart Number</i>	<i>Current Edition</i>	<i>Notices to Mariners affecting the chart from Edition 7 dated 1 Apr 2005</i>
Aus 742	Apr 2005	2005-457-599-1037-2006-48-570-571-572-573-924-
Aus 743	Oct 1993	2005-1107-1108-2006-48-221-856-924-1030-
Aus 744	Sep 1998	2005-416-511-628-896-897-1109-2006-222-390-
Aus 745	May 1985	2005-586-825-897-2006-222-2007-41-
Aus 747	Jul 2000	2005-548-1038-2006-857-
Aus 748	Mar 1994	2005-851-1038-
Aus 749	May 1993	2005-548-898-1038-
Aus 751	Nov 1986	2005-277-1039-2006-128-516-635-786-1017-
Aus 752	Jun 1985	2005-417-2006-263-786-
Aus 753	Jun 1988	2005-851-2006-786-800-
Aus 754	Jul 2002	2005-548-559-561-684-826-2006-49-352-636-750-786-800-976-978-1031-1032-1283-
Aus 755	May 1985	2005-406-561-2006-296-307-786-2007-30-
Aus 756	Aug 1985	2007-213-
Aus 757	Oct 1985	2005-765-2006-637-
Aus 758	Nov 1985	2006-637-
Aus 759	Mar 1984	2005-493-733-
Aus 762	Jun 1991	2005-493-2006-751-
Aus 763	Oct 1991	2005-232-
Aus 767	Jan 2007	
Aus 776	Nov 2002	2005-493-602-1110-2006-129-309-441-574-752-754-2007-213-
Aus 777	Feb 2007	
Aus 778	Feb 2007	
Aus 780	Oct 1967	2005-319-365-459-563-686-1000-2006-50-51-312-393-619-709-803-804-805-806-865-867-868-925-980-981-1034-2007-213-314-
Aus 781	Jul 1980	2005-562-563-586-1000-2006-50-83-296-312-393-644-709-755-804-805-806-867-925-981-1034-
Aus 786	Mar 1965	2005-38-
Aus 788	Jun 1996	2006-296-313-395-396-450-
Aus 789	May 2003	2006-576-
Aus 790	Nov 2004	2005-851-2006-710-
Aus 791	Nov 2004	2005-851-
Aus 795	Sep 1968	2005-277-2006-248-315-519-869-2007-30-96-97-270-
Aus 798	Feb 2003	2005-628-2006-296-2007-195-257-
Aus 799	Jun 1996	2005-460-736-
Aus 800	Aug 2002	2005-851-
Aus 801	May 1996	2005-851-2006-57-131-296-395-
Aus 802	Dec 1975	2005-369-765-2006-57-266-579-929-
Aus 805	Jun 2005	2006-133-249-451-580-
Aus 806	Jan 1965	2005-445-446-720-2006-249-426-
Aus 807	Jul 1966	2005-408-2006-426-956-
Aus 808	Jan 2001	2005-445-587-629-932-933-1056-2006-38-682-735-1078-2007-124-
Aus 809	Nov 2000	2005-629-2006-75-215-296-685-1080-1269-2007-31-
Aus 810	Mar 2006	
Aus 811	Mar 2006	
Aus 812	Jan 1994	2005-551-632-984-2006-686-
Aus 813	Mar 1962	2005-498-632-2006-495-2007-125-
Aus 814	Sep 1987	2005-354-451-498-499-500-883-2006-495-496-548-1112-1179-
Aus 817	Jan 1967	2005-411-453-1058-2006-688-738-790-1271-2007-34-83-258-
Aus 818	Mar 2006	2006-498-738-2007-34-83-
Aus 819	Mar 2006	2006-551-552-553-739-1272-1273-2007-84-260-306-
Aus 820	Mar 2006	2006-502-962-2007-84-260-
Aus 821	Mar 2006	2006-905-965-1017-1020-2007-86-
Aus 822	Mar 2006	2006-554-904-963-1275-2007-261-262-
Aus 823	Mar 2006	2006-555-689-740-904-905-2007-127-185-
Aus 824	Mar 2006	2006-905-906-964-1143-1181-1182-
Aus 825	Mar 2006	2006-1021-1143-1182-2007-217-
Aus 826	Mar 2006	2006-1144-1145-1183-2007-217-
Aus 827	May 2006	2006-792-1017-1145-1146-
Aus 828	Apr 2006	2006-908-2007-87-263-
Aus 829	May 2006	2006-1148-
Aus 830	Mar 2006	2006-433-1116-
Aus 831	Mar 2006	2006-1149-1216-
Aus 832	Apr 2006	2006-966-1117-
Aus 833	Jun 2006	2006-966-967-1082-1083-
Aus 834	Mar 2006	2006-1083-
Aus 835	Mar 2006	2006-793-910-911-
Aus 836	Mar 2006	
Aus 837	Mar 2006	2006-794-1151-1267-2007-35-180-307-

<i>Chart Number</i>	<i>Current Edition</i>	<i>Notices to Mariners affecting the chart from Edition 7 dated 1 Apr 2005</i>
Aus 839	Mar 2006	2006 -556-911-912-1152-1267- 2007 -93-
Aus 840	Nov 2003	2006 -254-844-845-1023-1152-1267- 2007 -35-36-89-186-189-309-310-
Aus 901	Apr 2003	2005 -851- 2006 -703-
Aus 902	May 2003	2005 -851-
Aus 903	May 2003	2005 -851-
Aus 905	May 2003	2005 -851-
Aus 920	Nov 2005	2006 -113-
Aus 4060	Sep 2004	2005 -450-454-462-638-867-890-900-1031- 2006 -40-123-134-306-356-388-390-564-630-649-704-749-1223-1224- 2007 -37-84-144-220-265-275-
Aus 4070	Sep 2004	2005 -414-598- 2006 -350-390- 2007 -30-
Aus 4071	Sep 2004	2005 -325-360-414-598-861- 2006 -306-350-390-749-
Aus 4074	Sep 2004	2005 -628-900-952- 2006 -356-1085- 2007 -30-
Aus 4601	Aug 2004	2005 -370-446-866-900- 2006 -249-266-356-758-1078-1227-
Aus 4602	Sep 2004	2005 -319-450-454-462-867-1057- 2006 -40-550-649-1078-1118- 2007 -84-
Aus 4603	Aug 2004	2005 -324-557-558-597-821-856-890-948-1034-1036- 2006 -80-262-306-388-564-630-695-699-704-748-749-854-923-973-974-1026-1155-1223-1224-1225-1280- 2007 -135-
Aus 4604	Aug 2004	2005 -353-454-638-809-890-1031- 2006 -564-694-695-696-699-1118- 2007 -37-144-220-265-
Aus 4620	Apr 2006	2006 -690-691-740-743-793-904-905-908-966-1118-1150-1267- 2007 -35-221-257-265-268-
Aus 4621	Apr 2006	2006 -624-740-904-905-1118- 2007 -144-265-
Aus 4622	Apr 1993	2005 -596-638-890- 2006 -302-303-509-563-564-627-630-696-1280- 2007 -37-144-220-265-
Aus 4708	Aug 2004	2005 -509-628-860-894-1036- 2006 -248-263-390-923-973-1026-1027-1028-1033-
Aus 4709	Aug 2004	2005 -353-899-900- 2006 -356-1033-
Aus 4710	Aug 2004	
Aus 4714	Jun 2004	2005 -113-
Aus 4720	Apr 2006	2006 -691-701-793-798-850-1223-1267- 2007 -191-221-268-
Aus 4721	Feb 2004	2005 -324-493-557-997- 2006 -80-125-512-513-567-701-748-850-1223-1224-
Aus 4722	Feb 2004	2005 -286-822-823-945-946-947-997-1034- 2006 -125-567-568-569-704-705-748-973- 2007 -94-134-269-
Aus 4726	Jan 1992	2005 -899- 2006 -49-1033-
Aus 4727	Jun 1994	2006 -639-640-641-
AX60105	May 2003	2006 -296-800-
AX60193	Oct 2004	2005 -320-409- 2006 -214-735-899-900-1018-1078-
AX60260	Jun 2006	2007 -184-262-
AX62735	Jan 2004	
AX63112	Jun 2004	2005 -353-826-1054- 2006 -976-1031-1032-1188-1283-
AX63200	Sep 2005	2006 -901-
AX63262	Jan 2006	2006 -909-1276- 2007 -128-
AX67192	Oct 2004	2006 -214-
AX67215	Aug 2005	
AX67248	Feb 2006	
AX67261	May 2003	
AX70117	Sep 2004	2005 -493-512-513-560-731-732-780-827- 2006 -264-706-801-858-976-977-1189-1283- 2007 -42-137-193-
AX70193	Oct 2004	2005 -319-320-409- 2006 -214-296-735-899-900-1018-1078-
AX72026	Jul 2005	2005 -858-859-892-893-994-996-1068-1069- 2006 -47-81-169-349-389-702-799-852-921-922-970-971-1187-1220-1221-1222- 2007 -312-313-
AX72309	Jul 2005	2006 -851-853-920- 2007 -192-223-
AX72722	Jul 2005	2006 -702-851-852-853-920-921-922-1220-