



Australian Notices to Mariners are the authority for correcting Australian Charts and Publications

AUSTRALIAN NOTICES TO MARINERS

© Commonwealth of Australia 2007 - Copyright restrictions apply to Notices to Mariners



Notices 548 – 585

List of Temporary and Preliminary Notices in force

Published fortnightly by the Australian Hydrographic Service

R. NAIRN

Hydrographer of Australia

- SECTIONS.**
- I. **Australian Notices to Mariners, including blocks and notes.**
 - II. **Amendments to Admiralty List of Lights and Fog Signals, Vol K**
 - III. **Navigational Warnings.**
 - IV. **Hydrographic Reports.**
 - V. **Amendments to Admiralty List of Radio Signals (NP 281(2), 282, 283(2), 285, 286(4))**
 - VI. **Amendments to Admiralty Sailing Directions (NP 9, 13, 14, 15, 33, 34, 35, 36, 39, 44, 51, 60, 61, 62, 100, 136)**

[British Admiralty Notices to Mariners](#)

[New Zealand Notices to Mariners](#)

The substance of these notices should be inserted on the charts affected.

Bearings are referred to the true compass and are reckoned clockwise from North; those relating to lights are given as seen by an observer from seaward. Positions quoted in permanent notices relate to the horizontal datum for the chart(s). When preliminary or temporary notices affect multiple charts, positions will be provided in relation to only one horizontal datum and that datum will be specified. When the multiple charts do not have a common horizontal datum, mariners will be required to adjust the position(s) for those charts not on the specified datum. The range quoted for a light is its nominal range. Depths are with reference to the chart datum of each chart. Heights are above mean high water springs or mean higher high water, as appropriate.

The capital letter (P) or (T) after the number of any notice denotes a preliminary or temporary notice respectively, which are contained separately at the end of the permanent notices. A star () adjacent to the number of a notice indicates that the notice is based on original information.*

Mariners are particularly requested to notify the AUSTRALIAN HYDROGRAPHIC SERVICE, Locked Bag 8801 Wollongong, NSW 2500 (Fax 02-4221 8599, e-mail Hydro.NTM@defence.gov.au or, alternatively by filling in and submitting the [Hydrographic Notes](#) forms located on the web site – www.hydro.gov.au), immediately on the discovery of new dangers or suspected dangers to navigation. For changes or defects in aids to navigation notify AusSAR (Fax 02-6230 6868 or email rccaus@amsa.gov.au).

Copies of these notices can be obtained from the AUSTRALIAN HYDROGRAPHIC OFFICE, 8 Station Street, Wollongong; Distributors for the sale of Australian Navigational Products; AHS website www.hydro.gov.au or register for eNotices at www.hydro.gov.au/enotices/enotices.htm.

The Notices may be copied for the purpose of inserting their substance on official charts and other publications. However, any copies of the notices may not be sold for profit.

IMPORTANT NOTICE

This edition of Notices to Mariners includes all significant information affecting AHS products which the AHS has become aware of since the last edition. All reasonable efforts have been made to ensure the accuracy and completeness of the information, including third party information, on which these updates are based. The AHS regards third parties from which it receives information as reliable, however the AHS cannot verify all such information and errors may therefore exist. The AHS does not accept liability for errors in third party information.

This work is copyright. Apart from any use permitted under the Copyright Act 1968, no part may be reproduced by any process, adapted, communicated or commercially exploited without prior written permission from The Commonwealth represented by the Australian Hydrographic Service. Copyright in some of the material in this publication may be owned by another party and permission for the reproduction of that material must be obtained from the owner.

NUMERICAL INDEX OF CHARTS AFFECTED

Edition No 13

06 July 2007

Notices	Aus Chart, ENC Cell, AHP
548.....	Aus 143, 155, 158, 244, 245, 608, 766, AU432153, 433151, 433152, 439145, 439148, 5179P4, 5XX208
549.....	Products - Amendment to Australian National Tide Tables 2007 and Seafarer Tides 2007
550.....	Aus 355, 767
551.....	Aus 203
552.....	Aus 197, 809
553.....	Aus 809
554.....	Aus 220
555.....	Aus 237, 238
556.....	Aus 247
557.....	Aus 819
558.....	Aus 4620, 4621, INT 620, 621
559.....	Aus 251, 821, 824, 4620, INT 620
560.....	Aus 646
561.....	Aus 26, 722, AX 72026, 72722
562.....	Aus 4722, INT 722
563.....	Aus 40, 732, 733
564.....	Aus 58, 59
565.....	Aus 57, 58, 59
566.....	Aus 120
567.....	Aus 121
568.....	Aus 171, 173, 174
569.....	Aus 171
570(T).....	Aus 813, 814
571(T).....	Aus 236
572(T).....	Aus 235
573(T).....	Aus 244, 245, 246
574(T).....	Aus 262, 830, AX 63262
576(T).....	Aus 376, 377, 378, 840, 4620, 4720, INT 620, 720
577(T).....	Aus 379, 505
578(T).....	Aus 379, 505, 621
579(T).....	Aus 382, 511, 4060, 4604, 4621, INT 60, 604, 621
580(T).....	Aus 519, 520, 521, 4620, 4621, 4622, INT 620, 621, 622
581(T).....	Aus 4
582(T).....	Aus 6
583(P).....	Aus 143, 154, 155, 158
584(P).....	Aus 154, 155

NUMERICAL INDEX OF CHARTS AFFECTED

Edition No 13

Aus Chart	Notices	INT Chart	Notices
Aus 4.....	581(T)	INT 60	579(T)
Aus 6.....	582(T)	INT 604	579(T)
Aus 26.....	561	INT 620	558, 559, 576(T), 580(T)
Aus 40.....	563	INT 621	558, 579(T), 580(T)
Aus 57.....	565	INT 622	580(T)
Aus 58.....	564, 565	INT 720	576(T)
Aus 59.....	564, 565	INT 722	562
Aus 120.....	566		
Aus 121.....	567		
Aus 143.....	548, 583(P)		
Aus 154.....	583(P), 584(P)		
Aus 155.....	548, 583(P), 584(P)		
Aus 158.....	548, 583(P)		
Aus 171.....	568, 569		
Aus 173.....	568		
Aus 174.....	568		
Aus 197.....	552		
Aus 203.....	551		
Aus 220.....	554		
Aus 235.....	572(T)		
Aus 236.....	571(T)		
Aus 237.....	555		
Aus 238.....	555		
Aus 244.....	548, 573(T)		
Aus 245.....	548, 573(T)		
Aus 246.....	573(T)		
Aus 247.....	556		
Aus 251.....	559		
Aus 262.....	574(T)		
Aus 355.....	550		
Aus 376.....	576(T)		
Aus 377.....	576(T)		
Aus 378.....	576(T)		
Aus 379.....	577(T), 578(T)		
Aus 382.....	579(T)		
Aus 505.....	577(T), 578(T)		
Aus 511.....	579(T)		
Aus 519.....	580(T)		
Aus 520.....	580(T)		
Aus 521.....	580(T)		
Aus 608.....	548		
Aus 621.....	578(T)		
Aus 646.....	560		
Aus 722.....	561		
Aus 732.....	563		
Aus 733.....	563		
Aus 766.....	548		
Aus 767.....	550		
Aus 809.....	552, 553		
Aus 813.....	570(T)		
Aus 814.....	570(T)		
Aus 819.....	557		
Aus 821.....	559		
Aus 824.....	559		
Aus 830.....	574(T)		
Aus 840.....	576(T)		
Aus 4060.....	579(T)		
Aus 4604.....	579(T)		
Aus 4620.....	558, 559, 576(T), 580(T)		
Aus 4621.....	558, 579(T), 580(T)		
Aus4622.....	580(T)		
Aus 4720.....	576(T)		
Aus 4722.....	562		
AX 63262.....	574(T)		
AX 72026.....	561		
AX 72722.....	561		
		ENC Cell	Notices
		AU432153	548
		AU433151	548
		AU433152	548
		AU439145	548
		AU439148	548
		AU5179P4.....	548
		AU5XX208.....	548

548 AUSTRALIA - Products

AHS (A241636, A250919, A251257, A251304, A251489, A251490, A251491, A251500, A251501)

New Chart

Chart	Published	Title, limits and description of amendments	Scale	Folio	Index Chart	Price
Aus 766	27/4/2007	Australia - Tasmania - Mistaken Cape to Wardlaws Point 41° 29' 45" S - 42° 39' 42" S 147° 56' 24" E - 148° 55' 46" E <i>New chart with improved coverage of Tasmanian coast from Mistaken Cape to Wardlaws Point.</i>	1:150 000	6	Aus 65001	\$29.50

New Edition

Chart	Published	Title and description of amendments	Scale	Folio	Index Chart	Price
Aus 143	27/4/2007	Australia - South Coast - Victoria - Port Phillip Plans: Patterson River 1:10 000 Sorrento 1:10 000 Blairgowrie 1:7 500 Mornington 1:7 500 Queenscliff 1:5 000 <i>General updating throughout incorporating new shipping fairway.</i> <i>Note: this chart is affected by Notices to Mariners 957(T)/2004, 351(T), 1090(T)/2005, 1013(T)/2006, 72(T), 415(T) and 455(T)/2007.</i>	1:100 000	6	Aus 65001	\$29.50
Aus 155	27/4/2007	Australia - South Coast - Victoria - Approaches to Melbourne Plans: Brighton Harbour 1:10 000 St Kilda Harbour 1:10 000 Sandringham 1:10 000 Altona 1:7 500 <i>General updating throughout incorporating new shipping fairway and buoyage. Horizontal datum is referred to WGS 84.</i>	1:37 500	6	Aus 65001	\$29.50
Aus 158	27/4/2007	Australia - South Coast - Victoria - Port Phillip South and West Channels <i>General updating throughout incorporating new shipping fairway.</i> <i>Note: this chart is affected by Notices to Mariners 957(T), 966(T)/2004, 351(T)/2005, 1013(T)/2006, 72(T) and 455(T)/2007.</i>	1:37 500	6	Aus 65001	\$29.50
Aus 244	27/4/2007	Australia - East Coast - Queensland - Plans in Port of Gladstone Plans: Entrance to North Channel 1:15 000 Gladstone and Adjacent Wharves 1:10 000 Fishermans Landing Wharves 1:10 000 South Trees Point 1:7 500 <i>General updating throughout incorporating new buoyage.</i> <i>Note: this chart is affected by Notices to Mariners 716(T), 764(T)/2006 and 234(T)/2007.</i>		7	Aus 65001	\$29.50
Aus 245	27/4/2007	Australia - East Coast - Queensland - Port of Gladstone <i>General updating throughout incorporating new buoyage.</i> <i>Note: this chart is affected by Notices to Mariners 716(T), 764(T)/2006, 152(T) and 234(T)/2007.</i>	1:25 000	7	Aus 65001	\$29.50

New Electronic Navigation Chart (Seafarer ENC)

Cell Name	Released	Title
AU432153	June 2007	Tasman Sea - Hat Head
AU433151	June 2007	Tasman Sea - Approaches to Newcastle
AU433152	June 2007	Tasman Sea - Port Stephens to Cape Hawke Harbour
AU439145	June 2007	Victoria - Western Port and Approaches
AU439148	June 2007	Bass Strait - Oil and Gas Fields - East
AU5179P4	June 2007	Flinders Island - Approaches to Lady Barron
AU5XX208	June 2007	Tasman Sea - Newcastle Harbour

New Edition to be published shortly

<i>Chart</i>	<i>Title</i>	<i>Scale</i>	<i>Expected Publication Date</i>	<i>Expected Stock Availability</i>
Aus 608	Indian Ocean - Christmas Island	1:100 000	22 June 2007	3 August 2007

For further details refer to the AHS website at www.hydro.gov.au for new edition and new chart stock arrival information.

When placing orders with a chart agent, mariners should advise whether their order pertains to the current edition or the new edition.

Admiralty publication

<i>NP No</i>	<i>Title</i>	<i>Date</i>	<i>Remarks</i>
NP 285	Admiralty List of Radio Signals Global Maritime Distress and Safety System (GMDSS) Edition 2007/08	21/6/07	NP 285 2006/07 is cancelled.

549 AUSTRALIA - Products - Amendment to Australian National Tide Tables 2007 and Seafarer Tides 2007

AHS (A249887, A249890, A251725)

Part 1 Tidal Predictions for Standard Ports

insert legend * 0.3 MUST BE SUBTRACTED FOR AUS 651 at bottom of pages 21, 22 and 23
insert legend * 0.2 MUST BE SUBTRACTED FOR AUS 662 at bottom of pages 24, 25 and 26
insert legend * 0.2 MUST BE SUBTRACTED FOR AUS 680 at bottom of pages 27, 28 and 29
insert legend * 0.1 MUST BE SUBTRACTED FOR AUS 609 at bottom of pages 36, 37 and 38
delete legend * 0.1 MUST BE SUBTRACTED FOR AUS 258 at bottom of pages 66, 67 and 68
delete legend * 0.3 MUST BE SUBTRACTED FOR AUS 136 at bottom of pages 168, 169 and 170

Torres Strait - Transmitting Tide and Current Gauges page 258

amend para 4 from Error value to *Negative heights*
amend para 5 from Minus sign = 1.6s (warble) to *Minus sign = 1.5s warble*

Part III Secondary Ports - Time Differences and Tidal Levels

amend Tidal levels Cape Deliverance (Port No 55780) to HAT 1.3, MHHW 1.2, MLHW 1.0, MSL 0.7, MHLW 0.4, MLLW 0.2 page 277
amend Mean time difference Port Welshpool (Port No 60590) to +0037 page 286

Part IV Harmonic Constituents

amend the To Chart Datum correction for Kaligola Point (Port No 55600) to *UNK* page 302
amend the To Chart Datum correction for Samarai I (Port No 55660) to *UNK* page 302
amend the ZO LAT(m) for Cape Deliverance (Port No 55780) to 0.69 page 304
amend the To Chart Datum correction for Cape Deliverance (Port No 55780) to 0.0 page 304
amend the To Chart Datum correction for Umboi I (Port No 56020) to 0.0 page 306
amend the To Chart Datum correction for Crab Island (Port No 58281) to -0.2 page 318
amend the To Chart Datum correction for Mumford Island (Port No 59595) to -0.3 page 336
amend the Harmonic constituents for Port Welshpool (Port 60590) to (rounded values are in brackets)
M2 5.8310 (5.3), S2 200.3819 (200.4), K1 107.8296 (107.8), O1 70.6887 (70.7), SA 110.1492 (110.1), SSA 184.5155 (184.5), MM 308.5511 (308.6), MSF 348.9400 (348.9), MF 250.6639 (250.7), S1 179.7963 (179.8), Q1 44.9088 (44.9), P1 100.7109 (100.7), N2 328.5746 (328.6), NU2 325.4855 (325.5), K2 211.4791 (211.5), L2 31.8974 (31.9), 2N2 282.1446 (282.1), MU2 312.7835 (312.8), T2 202.7929 (202.8), M4 171.8086 (171.8), MS4 252.3694 (252.4), 2MS6 207.2649 (207.3) pages 348 and 349
amend the To Chart Datum correction for Port Macdonnell (Port No 61430) to *UNK* page 354
amend the To Chart Datum correction for Cape Jervis (Port No 61561) to -0.1 page 356
amend the To Chart Datum correction for Tiparra Reef (Port No 61775) to *UNK* page 358
amend the To Chart Datum correction for Middle Bnk Sth Bcn (Port No 61785) to *UNK* page 358
amend the To Chart Datum correction for Cape Elizabeth (Port No 61770) to *UNK* page 358

Users of Seafarer Tides should view www.hydro.gov.au for an update.

Note: the harmonic constituent data for Pearce Cay (Port No 57933) missing from Seafarer Tides 2007 are included in the update files available for download.

550 AUSTRALIA - Miscellaneous correction

AHS (A241636)

Aus 355 [271/2007]

Insert	magenta limits, with legend Aus 766 in SE corner, between	41° 29'.84 S	147° 56'.32 E
		41° 29'.84 S	148° 55'.69 E
		42° 39'.79 S	148° 55'.69 E
		42° 39'.79 S	147° 56'.32 E
		41° 29'.84 S	147° 56'.32 E

Delete	magenta limits, with legend Aus 169, centred on magenta limits, with legend Aus 169, centred on	42° 08'.0 S	148° 17'.0 E
		42° 18'.0 S	148° 15'.0 E

Aus 767 [441/2007]

Insert	magenta legend, <i>Adjoining Chart Aus 766</i> , in S border	41° 50'.9 S	148° 30'.0 E
--------	--	-------------	--------------

551* AUSTRALIA - NEW SOUTH WALES - Parramatta River - Legend

AHS (A249062)

Aus203 (inset, Parramatta River) [463/2007]*On certain copies only*

Amend	legend to 281.8°	33° 49'.57 S	151° 03'.68 E
-------	------------------	--------------	---------------

552* AUSTRALIA - NEW SOUTH WALES - Bungan Head - Light buoys established

Heritage NSW (A250189, A250190)

Aus 197 [31/2007]

Insert	special conical light buoy, <i>Fl.Y.3s</i> , with topmark	33° 40'.11 S	151° 22'.86 E
	special conical light buoy, <i>Fl.Y.3s</i> , with topmark	33° 40'.38 S	151° 22'.99 E

Aus 809 [506/2007]

Insert	special conical light buoy, <i>Fl.Y.3s</i> , with topmark	33° 40'.11 S	151° 22'.86 E
--------	---	--------------	---------------

553* AUSTRALIA - NEW SOUTH WALES - Catherine Hill Bay - Depth

Newcastle Port Corp (A249049)

Aus 809 [552/2007]

Insert	depth, <i>44m</i>	33° 10'.75 S	151° 42'.22 E
--------	-------------------	--------------	---------------

554* AUSTRALIA - NEW SOUTH WALES - Richmond River - Ballina - Lights altered

Maritime NSW (A249940, A249941, A249944, A249946)

Aus 220 (plan, Richmond River Entrance) [508/2007]

Amend	light to <i>F.Bu</i>	28° 52'.44 S	153° 35'.10 E
	light to <i>F.Bu</i>	28° 52'.11 S	153° 34'.66 E
	light to <i>Iso.R.2s</i>	28° 52'.77 S	153° 34'.00 E
	light to <i>Iso.G.2s</i>	28° 52'.94 S	153° 34'.23 E

Substitute	east cardinal beacon with topmark for beacon	28° 52'.50 S	153° 33'.71 E
------------	--	--------------	---------------

Move	starboard lateral light buoy No005	28° 52'.56 S	153° 34'.35 E
	to	28° 52'.587 S	153° 34'.308 E
	port lateral light beacon	28° 52'.65 S	153° 33'.31 E
	to	28° 52'.662 S	153° 33'.363 E

555* AUSTRALIA - QUEENSLAND - Brisbane River - Lytton Reach - Light established
 Maritime Safety Queensland Notice 342/2007 (A248944, A251402)

Aus 237 [342/2007]

Insert	light, <i>F.G</i>	27° 24'.838 S	153° 08'.506 E
Amend	legend to <i>Cement Australia Co Wharf</i>	27° 24'.85 S	153° 08'.40 E
Delete	dashed line between	27° 24'.84 S 27° 24'.82 S	153° 08'.51 E 153° 08'.50 E

Aus 238 [216/2007]

Insert	light, <i>F.G</i>	27° 24'.838 S	153° 08'.506 E
Amend	legend to <i>Cement Australia Co Wharf</i>	27° 24'.85 S	153° 08'.40 E
Delete	dashed line between	27° 24'.84 S 27° 24'.82 S	153° 08'.51 E 153° 08'.50 E

556* AUSTRALIA - QUEENSLAND - Port Alma - Shell Point - Light altered

Maritime Safety Queensland Notice 358/2007 (A249480)

Aus 247 [509/2007]

Amend	light to <i>Q</i>	23° 33'.9 S	150° 52'.7 E
-------	-------------------	-------------	--------------

Aus 247 (plan, Approaches to Port Alma)

Amend	light to <i>Q</i>	23° 33'.9 S	150° 52'.7 E
-------	-------------------	-------------	--------------

Aus 247 (plan, Port Alma)

Amend	light to <i>Q</i>	23° 33'.9 S	150° 52'.7 E
-------	-------------------	-------------	--------------

557* AUSTRALIA - QUEENSLAND - Fitzroy River - Ledge Point - Light altered

Maritime Safety Queensland Notice 359/2007 (A249481)

Aus 819 [468/2007]

Amend	light to <i>Ldg Iso.2s & Q</i>	23° 30'.2 S	150° 47'.0 E
-------	------------------------------------	-------------	--------------

Aus 819 (inset, Fitzroy River)

Amend	light to <i>Ldg Iso.2s & Q</i>	23° 30'.2 S	150° 47'.0 E
-------	------------------------------------	-------------	--------------

558* AUSTRALIA - QUEENSLAND - Hay Point - Light

AHS (A249063)

Aus 4620 (INT 620) [345/2007]

Amend	light to <i>Fl(2)20M</i>	21° 17'.2 S	149° 16'.6 E
-------	--------------------------	-------------	--------------

Aus 4621 (INT 621) [265/2007]

Amend	light to <i>Fl(2)20M</i>	21° 17'.2 S	149° 16'.6 E
-------	--------------------------	-------------	--------------

559* AUSTRALIA - QUEENSLAND - Scawfell Island to Hay Point - Reporting point; recommended track

AHS (A212717, A251112),

Aus 251 [964/2006]

Insert	recommended track, with legends 033° - 213° and <i>Recommended Track</i> (see Note) between	20° 58'.72 S	149° 39'.50 E
		21° 03'.10 S	149° 36'.47 E

Delete	recommended track with legends between	20° 58'.5 S	149° 39'.5 E
		21° 03'.1 S	149° 36'.0 E

Aus 821 [470/2007]

Insert	recommended track, with legend 033° - 213° between	20° 55'.79 S	149° 41'.53 E
		21° 01'.92 S	149° 37'.29 E

Delete	recommended track with legend between	20° 55'.8 S	149° 41'.5 E
		21° 01'.9 S	149° 37'.0 E

Aus 824 [511/2007]

Insert	recommended track, with legends 033° - 213° and <i>Recommended Track</i> (see Note) between	20° 55'.79 S	149° 41'.53 E
		21° 05'.30 S	149° 34'.95 E

Delete	recommended track with legends between	20° 55'.8 S	149° 41'.5 E
		21° 05'.3 S	149° 24'.3 E

Aus 4620 (INT 620) [558/2007]

Amend	position for reporting point Y3 to 21° 12' 27" S 149° 30' 00" E	21° 21'.0 S	144° 23'.0 E
-------	--	-------------	--------------

Note: this information has been incorporated in new editions of Aus 249, Aus 250 and Aus 823, Notice to Mariners 459/2007 refers.

560* PAPUA NEW GUINEA - Madang - ZOC diagram

AHS (A248948)

Aus 646 (plan, Madang Harbour) [521/2007]

Substitute	accompanying ZOC diagram for ZOC diagram	5° 13'.5 S	145° 47'.6 E
------------	--	------------	--------------

561* AUSTRALIA - NORTHERN TERRITORY - Darwin - Wreck

Darwin Port Authority (A247591)

Aus 26 [475/2007]

Insert	depth, 16 _d m, enclosed by danger circle, with legend <i>Wk</i>	12° 26'.278 S	130° 47'.888 E
--------	--	---------------	----------------

Aus 722 [352/2007]

Insert	depth, 16 _d m, enclosed by danger circle, with legend <i>Wk</i>	12° 26'.28 S	130° 47'.89 E
--------	--	--------------	---------------

Delete	depth 18 _g m	12° 26'.5 S	130° 47'.7 E
--------	-------------------------	-------------	--------------

AX 72026 [475/2007]

Insert	depth, 16 _d m, enclosed by danger circle, with legend <i>Wk</i>	12° 26'.278 S	130° 47'.888 E
--------	--	---------------	----------------

AX 72722 [352/2007]

Insert	depth, 16 _d m, enclosed by danger circle, with legend <i>Wk</i>	12° 26'.28 S	130° 47'.89 E
--------	--	--------------	---------------

Delete	depth 18 _g m	12° 26'.5 S	130° 47'.7 E
--------	-------------------------	-------------	--------------

562* INDONESIA - Pulau Pulau Tengah - Light

AHS (A250026)

Aus 4722 (INT 722) [476/2007]*On certain copies only*

Amend	light to Fl.12M	7° 20'.5 S	117° 31'.9 E
-------	-----------------	------------	--------------

563* AUSTRALIA - WESTERN AUSTRALIA - Koolan Island - Pilot boarding place
Svitzer Australia (A251140)

Aus 40 [257/2007]

Insert pilot boarding place, with magenta legend *Koolan* 16° 07'.6 S 123° 40'.0 E

Aus 732 [136/2007]

Insert pilot boarding place, with magenta legend *Koolan* 16° 07'.5 S 123° 40'.0 E

Delete depth 16m 16° 07'.5 S 123° 40'.1 E

Aus 733 [136/2007]

Insert pilot boarding place, with magenta legend *Koolan* 16° 07'.5 S 123° 40'.0 E

Delete depth 16m 16° 07'.5 S 123° 40'.1 E

564* AUSTRALIA - WESTERN AUSTRALIA - Dampier - Depths; nav aids

Former Notice - 171(P)/2007 is cancelled

Maunsell Australia (A243011, A244124)

Aus 58 [479/2007]

Insert [accompanying block](#) 20° 35'.0 S 116° 45'.0 E

Aus 59 (plan, Withnell Bay to King Bay) [479/2007]

Insert [accompanying block](#) 20° 35'.0 S 116° 45'.0 E

565* AUSTRALIA - WESTERN AUSTRALIA - Dampier - Maintained depth

Former Notice - 172(T)/2007 is cancelled

Dampier Port Authority Notice 25/2007 (A251036)

Aus 57 [570/2006]

Amend legend to *10-0m* 20° 38'.4 S 116° 42'.8 E

Aus 58 [564/2007]

Amend legend to *10-0m* 20° 38'.41 S 116° 42'.83 E

Aus 59 (plan, Dampier Wharves) [564/2007]

Amend legend to *10-0m* 20° 38'.48 S 116° 42'.81 E

566* AUSTRALIA - SOUTH AUSTRALIA - Smoky Bay - Infrastructure

Former Notice - 721(P)/2004 is cancelled

AHS (A251266)

Aus 120 [707/2006]

Insert [accompanying block](#) 32° 23'.5 S 133° 53'.5 E

567* AUSTRALIA - SOUTH AUSTRALIA - Coffin Bay - Port Douglas - Light altered

DTEI SA (A249037, A249983)

Aus 121 (plan, Coffin Bay) [440/2006]

Amend light to *Fl.R. 1-5s* 34° 36'.68 S 135° 23'.99 E

Delete sectors at light 34° 36'.68 S 135° 23'.99 E

568* AUSTRALIA - TASMANIA - North West Bay - Nav aids
 Marine and Safety Tasmania (A231149, A231316)

Aus 171 [440/2007]

Substitute port lateral beacon with topmark, for beacon 43° 02'.92 S 147° 16'.44 E

Aus 173 [440/2007]

Insert port lateral beacon with topmark 43° 03'.01 S 147° 16'.36 E

Delete beacon 43° 02'.9 S 147° 16'.4 E
 depth 2₁m 43° 03'.1 S 147° 16'.3 E
 depth 0₆m 43° 03'.0 S 147° 16'.4 E

Aus 174 (plan, North West Bay) [315/2007]

Insert port lateral beacon with topmark 43° 03'.006 S 147° 16'.364 E

Substitute special spar light buoy, *Fl.Y.4s*, with topmark, for special light buoy 43° 02'.38 S 147° 16'.60 E
 special spar light buoy, *Fl.Y.4s*, with topmark, for special light buoy 43° 02'.29 S 147° 16'.62 E

Delete beacon 43° 03'.00 S 147° 16'.35 E
 depth 0₆m 43° 02'.97 S 147° 16'.38 E

569* AUSTRALIA - TASMANIA - Derwent River - Crayfish Point - Beacon discontinued
 Marine and Safety Tasmania (A251024)

Aus 171 [568/2007]

Delete port lateral beacon 42° 57'.14 S 147° 21'.27 E

570(T)/2007 AUSTRALIA - QUEENSLAND - Point Danger to Point Lookout - Scientific instruments

Former Notice - 484(T)/2007 is cancelled

Maritime Safety Queensland Notice 384(T)/2007 (A251347)

Special light buoys, *Fl(5)Y.20s*, exist in positions:

<i>Position (WGS 84 datum)</i>	<i>Depth</i>
28° 10'.76 S 153° 34'.68 E	25m
27° 57'.92 S 153° 26'.57 E	18m
* 27° 29'.76 S 153° 37'.79 E	73m

* Indicates revised position.

Mariners are not to use these buoys as moorings.

Chart temporarily affected – Aus 813 – Aus 814**571(T)/2007 AUSTRALIA - QUEENSLAND - Moreton Bay - North Stradbroke Island - Dunwich - Shoaling**

Former Notice - 401(T)/2007 is cancelled

Maritime Safety Queensland Notice 385(T)/2007 (A251429)

Shoaling, minimum depth 1.6m, exists in vicinity of 27° 29'.44 S 153° 23'.76 E.

Mariners are advised to navigate with caution in the area.

Chart temporarily affected - Aus236**572(T)/2007 AUSTRALIA - QUEENSLAND - Caloundra - Obstruction**

Maritime Safety Queensland Notice 394(T)/2007 (A251498)

An underwater obstruction exists in the vicinity of 26° 49'.1 S 153° 09'.9 E, approaches to North West Channel.

Mariners are advised to navigate with caution in the area.

Chart temporarily affected – Aus 235**573(T)/2007 AUSTRALIA - QUEENSLAND - Gladstone - Navaid upgrade completed**

Former Notice - 404(T)/2007 is cancelled

Maritime Safety Queensland Notice 252/2007 (A241726),

Cancel this notice on receipt.

Note: these changes have been incorporated in the new editions of charts Aus 244 and Aus 245. Notice to Mariners 548/2007 refers.

Chart formerly affected – Aus 244 – Aus 245 – Aus 246**574(T)/2007 AUSTRALIA - QUEENSLAND - Yorkeys Knob - Light buoy established**

Maritime Safety Queensland Notice 383(T)/2007 (A251346)

A special light buoy, *Fl.Y.3s*, exists in position 16° 48'.087 S 145° 42'.813 E. The light buoy marks the extremity of a sand spit extending from the northern headland of Half Moon River.

Mariner are advised to navigate with caution in the area.

Chart temporarily affected – Aus 262 – Aus 830 – AX 63262

575(T)/2007 PAPUA NEW GUINEA - Lights rehabilitated

Former Notice - 809(T)/2003 is cancelled
PNG NMSA (A68232, A251706)

Cancel this notice on receipt

576(T)/2007 PAPUA NEW GUINEA - Bristow Island - Light relit

Former Notice - 1003(T)/2006 is cancelled
PNG NMSA Notice 07-115 (A251436)

Cancel this notice on receipt

Chart formerly affected – Aus 376 – Aus 377 – Aus 378 – Aus 840 – Aus 4620 (INT 620) – Aus 4720 (INT 720)

577(T)/2007 PAPUA NEW GUINEA - Idihi It - Light unlit

PNG DOT (00/1142) (AH99/196)

The light K3464 (9° 25'.7 S 146° 53'.0 E) is unlit.

Chart temporarily affected - Aus379 - Aus505

578(T)/2007 PAPUA NEW GUINEA - Haidana Island - Light relit

Former Notice - 286(T)/2007 is cancelled
PNG NMSA Notice 07-115 (A251436)

Cancel this notice on receipt

Chart formerly affected – Aus 379 – Aus 505 – Aus 621

579(T)/2007 PAPUA NEW GUINEA - Loa Islet - Light relit

Former Notice - 323(T)/2007 is cancelled
PNG NMSA Notice 07-116 (A251438)

Cancel this notice on receipt

Chart formerly affected – Aus 382 – Aus 511 – Aus 4060 (INT 60) – Aus 4604 (INT 604) – Aus 4621 (INT 621)

580(T)/2007 PAPUA NEW GUINEA - Ward Hunt Strait to Cape Ward Hunt - Lights unlit

Former Notice - 495(T)/2007 is cancelled
PNG DOT (A33975), PNG NMSA Notice 07-117 (A251433)

The following lights are unlit.

<i>Name</i>	<i>Position (WGS 84 datum)</i>	<i>Volume K</i>
Ham Reef	9° 11'.9 S 149° 26'.7 E	3429.6
Stewart Reef	9° 07'.7 S 149° 23'.5 E	3429.8
Eve Shoal	8° 31'.0 S 148° 25'.4 E	3423
Raymonde Shoal	8° 13'.1 S 148° 17".5 E	3442.5

Chart temporarily affected – Aus 519 – Aus 520 – Aus 521 – Aus 4620 (INT 620) – Aus 4621 (INT 621) – Aus 4622 (INT 622)

581(T)/2007 AUSTRALIA - QUEENSLAND - Weipa - Depth information*Former Notice - 946(T)/2006 is cancelled*

Maritime Safety Queensland Notice 390(T)/2007 (A251496)

Available depths as at 1 June 2007:

	Metres
South Channel	11.1
Departure Channel	10.8
Cora Bank South Channel	7.3
Humbug Point Approaches	8.6
Humbug Point Berth	9.5
Evans Landing	9.6
Lorim Point East	12.5
Lorim Point West	12.3

Mariners are advised that the revised minimum under keel clearance for Weipa South Channel is *1.2 metres*.*Mariners are further advised that the sandbar on Urquart Point extends 40m into the channel with a minimum depth of *9 metres* on the toeline.

*Indicates new entry.

Chart temporarily affected - Aus4**582(T)/2007 AUSTRALIA - QUEENSLAND - Karumba - Depth information***Former Notice - 1302(T)/2006 is cancelled*

Maritime Safety Queensland Notice 369(T)/2007 (A249884)

Available depths as at 17 May 2007:

	Metres
Entrance Channel	3.7
Mobil/Trinity Wharf	6.3
Raptis Wharf	5.3
Ruby Marine Wharf	5.3
Gulf Freight Services Wharf	6.2
Karumba Cold Stores Wharf	6.2
Seaswift/Shell Wharf	6.2
Karumba Livestock Loading Wharf	5.4
Gulf Freight Services Ramp/Wharf	4.6
Pasminco Export Wharf	4.2

* Indicates revised entry.

Chart temporarily affected - Aus 6**583(T)/2007 AUSTRALIA - VICTORIA - Port Phillip - Transit only zone established***Former Notice - 1072(P)/2006 is cancelled*

Victorian Notice 128/2006 (A211171),

Cancel this notice on receipt

Note: these changes have been incorporated in the new editions of charts Aus 143, Aus 155 and Aus 158. Notice to Mariners 548/2007 refers.**Chart formerly affected - Aus 143 - Aus 154 - Aus 155 - Aus 158**

584(T)/2007 AUSTRALIA - VICTORIA - Port Phillip - Light beacons established; light buoys withdrawn

Former Notice - 1073(P)/2006 is cancelled

Victorian Notice 135/2006 (A214985),

Cancel this notice on receipt

Note: these changes have been incorporated in the new editions of charts Aus 143, Aus 155 and Aus 158.
Notice to Mariners 548/2007 refers.

Chart formerly affected – Aus 154 – Aus 155**585(T)/2007 AUSTRALIA - TEMPORARY AND PRELIMINARY NOTICES**

Former Notice - 336(T)/2007 is cancelled

AHS (A241336)

<i>Notice</i>	<i>Charts affected</i>	<i>Locality and Subject</i>
		BASS STRAIT
75/2007	Aus357A.....	Light buoy off station.
		CORAL SEA
		<i>Lihou Reef</i>
653/2001	Aus614.....	Shoals
		<i>Willis Islets</i>
663/2006	Aus617-4620-4621	Light unlit
		NEW SOUTH WALES
		<i>Batemans Bay</i>
317/2006	Aus191	Shoaling; buoy
		<i>Brisbane Water</i>
813/2006	Aus216.....	Scientific instrument eastwards
		<i>Broken Bay</i>
742/2005	Aus197-204-215-AX70197	Barrenjoey Head-Scientific instrument northwards
483/2007	Aus361-809.....	Fish aggregating devices eastwards
		<i>Clarence River</i>
362/2007	Aus220	Dredging operations
		<i>Eden to Ballina</i>
135/2006	Aus197-806-808-809-813- AX70197-70808	Light buoys
		<i>Green Cape to Lennox Head</i>
522/2006	Aus197-806-807-808-809- 810-811-812-813- AX70197-70808	Scientific instruments
		<i>Harrington Inlet</i>
523/2006	Aus810.....	Obstruction
		<i>Jervis Bay</i>
453/2006	Aus193-AX60193-67192- 70193	Light unlit
930/2006	Aus193-AX60193-70193.....	Light buoy off station
		<i>Newcastle</i>
228/2007	Aus207	Little Redhead Point-Scientific instrument
229/2007	Aus207-208.....	Depth information
361/2007	Aus207-208.....	Scientific instrument
		<i>Port Jackson</i>
1043/2005	Aus202-203.....	Light buoys
454/2006	Aus202	Gore Cove-Shoaling
47/2007	Aus200-201-AX63200.....	West Channel-Light beacon destroyed; light buoy.
		<i>Port Kembla</i>
739/2005	Aus195.....	Depth information
99/2007	Aus195.....	Light buoys withdrawn.

585(T)/2007 (Continued)

<i>Notice</i>	<i>Charts affected</i>	<i>Locality and Subject</i>
100/2007	Aus195	Wave energy barge; light buoys to be established.
227/2007	Aus195-808.....	Dredging operations; dumping; survey operations
360/2007	Aus195	Dredging operations; buoys
528/2007	Aus195	Obstruction; lights
NORTHERN TERRITORY		
<i>Cape Croker to Vashon Head</i>		
241/2007	Aus18-308-721	Scientific instruments
<i>Darwin</i>		
1062/2006	Aus26-28.....	Shoaling
1134/2006	Aus26-28.....	Depth information
242/2007	Aus26-28-AX72026.....	Obstruction; light buoys
<i>Gove</i>		
411/2006	Aus15	Light buoy off station
1169/2006	Aus15	Light buoys off station
<i>Groote Eylandt</i>		
672/2006	Aus4720	Scientific instrument eastwards
<i>Melville Island</i>		
882/2006	Aus20-309-722-AX70722-..... 72722	Reef delineation
<i>Troubadour Shoals</i>		
950/2004	Aus309-311-315	Scientific instruments
<i>Yirrkala</i>		
1303/2006	Aus306-715-4720-4721	Rock
QUEENSLAND		
<i>Agnes Water</i>		
54/2007	Aus818	Wreck southeastwards.
<i>Albatross Bay</i>		
240/2007	Aus4	Scientific instrument
<i>Arkwright Point</i>		
108/2007	Aus365	Scientific instrument.
<i>Arlington Reef</i>		
470/2006	Aus830	Buoy westwards withdrawn
<i>Bow Reef</i>		
1130/2006	Aus281-374-834-4620.....	Light range reduced
<i>Brisbane River</i>		
816/2006	Aus236-237.....	Harbour works
1089/2006	Aus237-238.....	Depth information
1090/2006	Aus238	Lights altered
197/2007	Aus237	Lytton Rocks Reach-Harbour works
403/2007	Aus238	Hamilton Reach-Wreck
445/2007	Aus238	Quarries Reach to Parker Island Reach-Harbour works; light buoys
<i>Bundaberg</i>		
271/2006	Aus242-243.....	Depth information
534/2007	Aus242	Cable ferry operations
<i>Cairns</i>		
233/2006	Aus263-264.....	Trinity Inlet-Wreck; light buoy
467/2006	Aus262-263-264-830-..... AX63262	Depth information
<i>Caloundra</i>		
572/2007	Aus235	Obstruction
<i>Cape Bowling Green</i>		
373/2007	Aus371-826-827	Light buoy off station

585(T)/2007 (Continued)

<i>Notice</i>	<i>Charts affected</i>	<i>Locality and Subject</i>
112/2007	Aus256	<i>Cape Cleveland</i> Scientific instrument.
281/2007	Aus371-827	Wreck northeastward
280/2007	Aus251-252	<i>Cape Hillsborough to Cape Conway</i> Scientific instruments
494/2007	Aus834-835-836	<i>Cape Weymouth</i> Wreck northwards
659/2006	Aus372-828	<i>Chicken Reef and Pith Reef</i> Scientific instruments
878/2006	Aus270	<i>Cooktown</i> Shoaling
162/2007	Aus270	Light beacon destroyed; light buoy.
113/2007	Aus830	<i>Double Island</i> Scientific instrument.
275/2006	Aus246	<i>Gladstone</i> Shoaling
716/2006	Aus244-245-246	Depth information
764/2006	Aus244-245	Harbour works
152/2007	Aus245-246	Intermediate lead.
234/2007	Aus244-245	Clinton Channel-Harbour works
651/2006	Aus814	<i>Gold Coast Seaway</i> Shoaling
1166/2006	Aus827-828	<i>Halifax Bay</i> Wreck
464/2006	Aus249-250	<i>Hay Point</i> Pilot boarding place
59/2007	Aus249-250	Harbour works.
370/2007	Aus249-250	Depth information
448/2007	Aus250	Declared navigation depth
493/2007	Aus249-250	Harbour works
539/2007	Aus249-250-251	<i>Hay Point to Bailey Islet</i> Scientific instruments
1293/2006	Aus366-426-819	<i>Heron Island</i> Scientific instruments.
533/2005	Aus6	<i>Karumba</i> Light buoy
582/2007	Aus6	Depth information
765/2006	Aus247	<i>Keppel Bay</i> Wreck
818/2006	Aus366-367-820	<i>Keppel Isles</i> Wreck eastwards
1052/2006	Aus252	<i>Laguna Quays</i> Reduced depth
109/2007	Aus247	<i>Lisa Jane Shoals</i> Scientific instrument.
1002/2006	Aus373-830-831	<i>Low Islets</i> Sector light trial extended
146/2006	Aus250	<i>Mackay</i> Depth information
239/2007	Aus249-250	Harbour works

585(T)/2007 (Continued)

Notice	Charts affected	Locality and Subject
		<i>Moreton Bay</i>
1162/2006	Aus236	Light buoy established
1191/2006	Aus237	Outer Bar Reach-Shoaling
51/2007	Aus235-236	Skirmish Passage-Wreck; light buoy.
102/2007	Aus235-236	Spitfire Channel-Light sector partially undefined.
103/2007	Aus236	North Stradbroke Island-Dunwich-Lead unlit.
104/2007	Aus236	Lamb Island- Obstruction; light buoy; sign.
105/2007	Aus236	Karragarra Island-Obstruction; light buoy; sign.
106/2007	Aus236	Redcliffe-Scientific instrument.
232/2007	Aus236	Scarborough-Dredging operations
364/2007	Aus235-236	Spitfire Channel-Light buoys
366/2007	Aus236	Middle Banks-Obstruction
402/2007	Aus236	Victoria Point-Obstruction; buoy
531/2007	Aus236	Russell Island-Harbour works
533/2007	Aus236	Bramble Bay-Geotechnical operations
571/2007	Aus236	North Stradbroke Island-Dunwich-Shoaling
		<i>Moreton Bay and Brisbane River</i>
529/2007	Aus235-236-237-238-814	Depth information and keel clearances
		<i>Mourilyan</i>
541/2007	Aus258	Depth information
		<i>North West Channel, Spitfire Channel and Inner Bar</i>
1231/2006	Aus235-236-237	Dredging operations
		<i>Orpheus Island</i>
658/2006	Aus827-828	Radio mast
		<i>Pioneer Bay</i>
1244/2006	Aus268	Harbour works; light buoys.
321/2007	Aus253-268	Muddy Bay-Scientific instruments
		<i>Point Danger to Point Lookout</i>
570/2007	Aus813-814	Scientific instruments
		<i>Polmaise Reef to Cape Capricorn</i>
536/2007	Aus247-819	Scientific instruments
		<i>Port Alma</i>
767/2006	Aus247	Leading light; light buoys
235/2007	Aus247	Depth information
		<i>Port Douglas</i>
64/2007	Aus270	Depth information.
		<i>Pumicestone Passage</i>
1122/2006	Aus235-236	Scientific instrument
		<i>Red Island Point</i>
853/2003	Aus294	Shoaling
		<i>Round Hill Head</i>
201/2007	Aus366-818	Wreck northeastwards
		<i>Separation Banks to Donovan Shoal</i>
538/2007	Aus260-822-AX60260	Scientific instruments
		<i>Shoalwater Bay</i>
405/2007	Aus248-260-261-367-820- 822-AX60260-67248-67261	Military exercise
447/2007	Aus260-367-822-AX60260	Marine danger area eastwards
537/2007	Aus248-260-261-367-820- 822-AX60260-67248-67261	Military exercises
		<i>Skardon River</i>
671/2006	Aus701	Shoaling
		<i>Thursday Island</i>
687/2001	Aus293-299	Depth information

585(T)/2007 (Continued)

<i>Notice</i>	<i>Charts affected</i>	<i>Locality and Subject</i>
		<i>Townsville</i>
281/2006	Aus256-257.....	Wreck
1195/2006	Aus257	Dredging operations.
1196/2006	Aus257	Scientific instruments.
282/2007	Aus257	Dredging operations
540/2007	Aus256-257.....	Depth information
		<i>Weipa</i>
66/2007	Aus4	Light beacon destroyed; light buoy.
581/2007	Aus4	Depth information
		<i>Yorkeys Knob</i>
574/2007	Aus262-830-AX63262.....	Light buoy established
		SOUTH AUSTRALIA
		<i>Adelaide</i>
239/2006	Aus137	Depth information
240/2006	Aus137	Shoaling
206/2007	Aus137	Bridge construction; exclusion zones; temporary light buoys
		<i>Barker Inlet</i>
484/2006	Aus780-781.....	Shoaling
249/2007	Aus781	Beacon destroyed
		<i>Coffin Bay</i>
1171/2006	Aus121	Light beacon unlit
		<i>Franklin Harbour</i>
482/2006	Aus777	Beacon destroyed
		<i>Glenelg</i>
490/2002	Aus125-781.....	Restricted areas; light buoys
		<i>Maret Islands</i>
451/2007	Aus320-729.....	Scientific instruments
		<i>Margaret Brock Reef</i>
452/2002	Aus127	Structure
		<i>Point Pearce</i>
500/2007	Aus776-777.....	Light buoy off station
		<i>Port Lincoln</i>
372/2006	Aus134	Light beacon destroyed
		<i>Semaphore Anchorage</i>
70/2007	Aus137	North Haven Marina-Shoaling.
		<i>Stansbury</i>
1012/2005	Aus780-781.....	South Spit-Beacon destroyed
		<i>Thevenard</i>
1170/2006	Aus120	Light beacon destroyed, temporary light
		<i>Venus Bay</i>
1069/2006	Aus121	Beacon destroyed
1136/2006	Aus121	Beacon destroyed
		<i>Wallaroo</i>
1172/2006	Aus777	Depth information
		<i>Yarraville Shoal</i>
815/2002	Aus344-444-778	Light beacon destroyed; light buoy
		TASMANIA
		<i>Bruny Island</i>
545/2007	Aus173.....	Wreck
		<i>Burnie</i>
781/2006	Aus163.....	Depth information

585(T)/2007 (Continued)

Notice	Charts affected	Locality and Subject
905/2004	Aus173	<i>D'Entrecasteaux Channel</i> Spat collection; light buoys
122/2007	Aus172	<i>Derwent River</i> New Town Bay-Obstructions.
780/2006	Aus164	<i>Devonport</i> Depth information
412/2007	Aus179-800.....	<i>Flinders Island</i> Harbour works
922/2005	Aus179-800.....	<i>Furneaux Group</i> Franklin Sound-Shoaling
1204/2006	Aus169	<i>Georges Bay</i> Shoaling.
1126/2005	Aus172	<i>Hobart</i> Depth information
1307/2006	Aus172	Drilling operations.
501/2007	Aus172	Harbour works
89/2003	Aus173	<i>Huon River</i> Wreck; buoy
502/2007	Aus168	<i>Launceston</i> North Esk River-Harbour works
1129/2005	Aus169-171.....	<i>Marion Narrows</i> Beacon destroyed
1308/2006	Aus169-171.....	Light beacon altered.
906/2004	Aus171	<i>Norfolk Bay</i> Spat collection; light buoys
270/2005	Aus176	<i>Port Davey</i> Horizontal datum anomaly
264/2002	Aus170	<i>Spring Bay</i> Depth information
892/2006	Aus795	<i>The Lanterns to Deep Glen Bay</i> Scientific instruments
TIMOR SEA		
476/2006	Aus312	<i>Sahul Banks</i> Scientific instruments
1304/2006	Aus43-320-322	<i>Scott Reef to Wildcat Reefs</i> Scientific instruments.
TORRES STRAIT		
408/2007	Aus376	<i>Sketty Belle Shoal</i> Hulk
VICTORIA		
1002/2004	Aus181-182.....	<i>Barry Beach</i> Shoaling
673/2005	Aus150-349-422-487-788- 801	<i>Cape Schanck</i> DGPS range reduced
458/2007	Aus357a	<i>Ninety Mile Beach</i> Obstructions
457/2007	Aus181-182.....	<i>Port Albert</i> Harbour works

585(T)/2007 (Continued)

<i>Notice</i>	<i>Charts affected</i>	<i>Locality and Subject</i>
		<i>Port Phillip</i>
957/2004	Aus143-144-158	Shoal
966/2004	Aus144-158.....	Sorrento Channel-Beacon destroyed; buoy
351/2005	Aus143-144-158	South Channel-Shoaling
1090/2005	Aus143-157.....	Corio Bay-Light beacon; light buoy
242/2006	Aus154	Victoria Dock-Harbour works
421/2006	Aus154	Port Melbourne Channel-Station Pier-Shoaling
950/2006	Aus157	Point Richards Channel-Light beacon damaged
951/2006	Aus157	Hopetoun Channel-Light beacon destroyed; light buoy
952/2006	Aus157	Geelong-Depth information; shoal
1013/2006	Aus143-144-158	Sorrento Channel-Light beacon destroyed; light buoy
1174/2006	Aus157	Geelong-Navaid replacement
1262/2006	Aus154	Port Melbourne-Light beacon destroyed; light beacon
72/2007	Aus143-154-158	Pinnacle Channel to Williamstown Channel-Scientific instruments.
297/2007	Aus154	Port Melbourne-Depth information
378/2007	Aus154	Swanson Dock-Harbour works
415/2007	Aus143	Daveys Bay-Harbour works
455/2007	Aus143-144-158	Entrance Deep-Underwater survey work
546/2007	Aus154	Williamstown Channel-Light altered
		<i>Port Welshpool</i>
72/2006	Aus181-182.....	Lewis Channel-Beacon destroyed
		<i>Western Port</i>
228/2005	Aus150-151.....	Shoreham-Beacon destroyed
253/2007	Aus150	Newhaven-Harbour works; navaid relocation
547/2007	Aus150	Light beacons; obstruction
		WESTERN AUSTRALIA
		<i>Albany</i>
729/2006	Aus109	Light beacon; light buoy
		<i>Champagne Island</i>
244/2007	Aus320-730.....	Scientific instruments
		<i>Cockburn Sound</i>
1089/2005	Aus111	Obstruction
		<i>Dampier</i>
438/2005	Aus58-59.....	Light temporarily discontinued
477/2006	Aus57-58-59	Depth information
1066/2006	Aus58-59.....	Artificial reef
		<i>Dampier Archipelago</i>
523/2004	Aus327-415.....	Scientific instruments northwestwards
		<i>Esperance</i>
857/2004	Aus119	Light buoy
779/2006	Aus119	Scientific instrument
		<i>Fremantle</i>
175/2007	Aus112-113-AX63112.....	Obstruction; submarine pipeline; light buoys.
295/2007	Aus113	Light buoy repositioned
454/2007	Aus113-AX63112	Depth information
		<i>Geographe Bay</i>
1260/2006	Aus755-756.....	Scientific instrument.
		<i>Geraldton</i>
174/2007	Aus81	Harbour works.
544/2007	Aus332-333-751-752.....	Scientific instruments southward
		<i>Koolan Island</i>
539/2006	Aus40	Mooring; barge
		<i>Mandurah</i>
103/2006	Aus116-755.....	Light beacon to be established; light buoy
		<i>Mary Anne Island</i>
1306/2006	Aus63-328-743	Light re-established; characteristics altered.

585(T)/2007 (Continued)

Notice	Charts affected	Locality and Subject
		<i>Montebello Islands</i>
173/2007	Aus328	Scientific instrument northwestwards.
		<i>Napier Broome Bay</i>
331/2007	Aus727	Rock
		<i>North West Cape</i>
888/2006	Aus744	Scientific instrument northwards
247/2007	Aus329-415-416	Wells northward
543/2007	Aus328-329-744	Wells northward
		<i>Oakagee River</i>
1104/2006	Aus751	Scientific instruments westward
		<i>Port Hedland</i>
1065/2006	Aus54	Light buoys temporarily withdrawn
1103/2006	Aus54	Lights altered
375/2007	Aus54	Depth information
452/2007	Aus54	Harbour works; restricted areas
		<i>Rankin Bank</i>
887/2006	Aus327-328-415	Production wells; pipeline
		<i>Shoal Point</i>
292/2007	Aus332-416-417	Light range to be altered
		<i>Timor Sea</i>
1102/2006	Aus43-322.....	Scientific instruments southward
		<i>Vansittart Bay</i>
332/2007	Aus727-728.....	Jar Island-Rock
		<i>Wilson Point</i>
1255/2006	Aus320-323-730-732.....	Scientific instruments.
		EAST TIMOR
		<i>Dili</i>
727/2006	Aus901	Light unlit
		<i>Pulau Jaco</i>
309/2005	Aus311-312-313-4721.....	Light unlit
		INDIAN OCEAN
1135/2006	Aus4071	Scientific instruments
800/2005	Aus607	Light beacon
		<i>Sumatera</i>
68/2007	Aus4070-4071.....	Scientific instruments westward.
		PACIFIC OCEAN
1133/2006	Aus4060-4604.....	Scientific instruments
		PAPUA NEW GUINEA
285/2006	Aus399-462-4604-4622.....	Scientific instruments northeastwards
893/2004	Aus399-461-683-684-4060- .. 4604-4622	Lights destroyed
		<i>Cape Gazelle</i>
325/2007	Aus397-461-545-554-680	Light unlit
		<i>Cape Tavui</i>
116/2007	Aus397-461-680-4622.....	Light unlit.
		<i>China Strait</i>
287/2007	Aus381-567-625-629.....	Light unlit
		<i>Idihi It</i>
577/2007	Aus379-505.....	Light unlit
		<i>Kimbe Island</i>
374/2007	Aus395-547-4622	Light unlit

585(T)/2007 (Continued)

<i>Notice</i>	<i>Charts affected</i>	<i>Locality and Subject</i>
		<i>Lae</i>
964/2005	Aus523-4622.....	Light unlit
471/2006	Aus523.....	Wreck
		<i>Long Island</i>
1253/2006	Aus387.....	Light unlit.
		<i>Madang</i>
967/2005	Aus646.....	Horizontal datum anomaly
117/2007	Aus646.....	Leading lights unlit.
		<i>Nuakata Passage</i>
1057/2006	Aus381-628-629-630.....	Lights unlit
		<i>Nussing Island to Fortification Point</i>
892/2004	Aus386-523-654-4603- 4604-4622	Lights unlit
		<i>Port Moresby</i>
665/2006	Aus379-380-505-4620.....	Fish aggregation device southwards
		<i>Rothery Passage</i>
666/2006	Aus380-506-4620-4621.....	Light beacon destroyed
		<i>Round Hill Anchorage</i>
1249/2006	Aus654.....	Beacon destroyed
		<i>Ward Hunt Strait to Cape Ward Hunt</i>
580/2007	Aus519-520-521-4620- 4621-4622	Lights unlit
		<i>Wewak Harbour</i>
1167/2006	Aus651.....	Lights unlit
		SOUTHERN OCEAN
335/2007	Aus4060-4074-4601.....	Scientific instrument

II

AMENDMENTS TO ADMIRALTY LIST OF LIGHT AND FOG SIGNALS VOLUME K 2007/08

Edition No 13 dated 6 July 2007

Last Amendment: Edition No 12 dated 22 June 2007

K2782-4	- Ldg Lts 256-4°. Front	32 10-41 S 152 30-57 E	F Bu	9	6		
	*						
K2782-41	- Ldg Lts 256-4°. Rear. 326m from front	32 10-45 S 152 30-36 E	F Bu	17	6		
	*						
K2783-3	Remove from list						
DELETED							
K2819-85	- HALF-TIDE TRAINING WALL	29 25-53 S 153 21-08 E	Fl Y 5s	Yellow x on yellow beacon	
*	*	*	*	*	*	*	*
K2863-5	Remove from list						
DELETED							
K2998-8	Yeppoon. Ldg Lts. Front	23 08-17 S 150 45-05 E	F G	Neon
*	*	*	*	*	*	*	*
K2998-81	Yeppoon. Ldg Lts. Rear	23 08-18 S 150 45-02 E	F G	Neon
*	*	*	*	*	*	*	*
K3423	Holnicote Bay. Eve Shoal	8 31-10 S 148 25-40 E	Fl(2) WR 8s	16	10	White pile structure 9	<i>fl 0-4, ec 1, fl 0-4, ec 6-2.</i> R 125°-145°(20°), W 145°-155°(10°), R 155°-175°(20°), W 175°-125°(310°). TE 2007
							*
K3429-6	Ham Reef	9 11-89 S 149 26-82 E	Fl W 10s	16	10	Black pile structure 9	<i>fl 1.</i> TE 2007
							*
K3429-8	Stewart Reef	9 07-58 S 149 23-53 E	Fl R 1-5s	7	4	White pile 7	<i>fl 0-2.</i> TE 2007
							*
K3847-5	Iliomama Rock	36 48-50 S 174 53-20 E	Q WR	2	W 5 R 3	Black and white metal pile	R 062°-249-5°(187-5°), W 249-5°-062°(172-5°). Ra Refl
							*
K4406	- No 1	46 36-18 S 168 21-70 E	Fl G 3s	3	2	Green beacon	<i>fl 0-5</i>
		*	*	*			*
K4413	- No 3	46 35-86 S 168 21-20 E	Fl(3) G 6s	6	3	Green pile beacon	<i>(fl 0-5, ec 0-5) x 2, fl 0-5, ec 3-5</i>
			*	*			*
K4623-5	- Neiafu	18 39-20 S 173 59-10 W	Iso W 2s	..	6	..	Reported TE 2007
							*
K4646-51	- Ldg Lts 236°01'. Rear. 920m from front	21 04-11 S 175 15-18 W	Iso R 6s	9	4	White aluminium tower	
	*	*	*			*	

Volume K *continued*

K4646-56	- Nuku' Alofa Harbour. Avalahi	21 03:35 S 175 13:29 W	Fl G 6s				
*	*	*	*	*	*	*	*
K4646-61	- Nuku' Alofa Harbour. Avalahi	21 02:77 S 175 12:79 W	Fl G 6s				
*	*	*	*	*	*	*	*
K4646-65	- Nuku' Alofa Harbour. Avalahi	21 01:39 S 175 11:62 W	Fl G 6s				
*	*	*	*	*	*	*	*
K4646-7	-	21 02:82 S 175 12:15 W	Fl W 5s	4	4		
		*	*	*	*		

III

NAVIGATION WARNINGS

The following radio messages have been received during the period to 22 June 2007. Signal copies of these messages may be destroyed. It is recommended that the reprint of Navigational Warnings should be kept in a file or a book divided into areas. Cancellation should be made on receipt of signals and reprints.

Rigs on location other than those listed in the latest Section III summary are the subject of Radio Navigational Warnings. Rigs in transit will not be the subject of Warnings.

AUSCOAST WARNING

- 138 SE Coast. Seismic survey vessel *Pacific Titan* towing 3M cable in area 38° 00' S to 39° 30' S and 148° 30' E to 149° 30' E. 5M clearance requested.
- 139 NW Coast. Pipe laying and drilling operations in progress in the Stybarrow Field in area 21° 20'.3 S to 21° 32'.3 S and 113° 46'.2 E to 113° 53'.3 E. 10m lit buoy exists in position 21° 27'.0 S 113° 49'.5 E. Drill rig *Atwood Eagle* and installation vessels CSO *Deep Pioneer* and CSO *Venturer* operating within bounded area.
- 140 SE Coast. Seismic survey vessel *Atlantic Guardian* towing 1M cables in area 38° 25' S to 39° 00' S and 148° 15' E to 148° 50' E. 5M clearance requested.
- 141 Cancelled.
- 142 SW Coast. Shoal Point light K1739 (28° 03'.4 S 114° 12'.5 E) range altered to 19M.
- 143 Cancelled.
- 144 S Coast. Yarraville Shoals light K1931, *Fl(3)15s 10M*, re-established in position 33° 17' S 137° 35' E.
- 145 Cancelled.
- 146 NW Coast. Rowley Shoals light K1674 (17° 31'.1 S 118° 56'.8 E) unlit.
- 147 Cancelled.
- 148 SE Coast. Seismic survey vessel *Western Trident* towing 8 x 3M cables in area 38° 43' S to 39° 03' S and 142° 20' E to 142° 48' E. 5M clearance requested.
- 149 Cancelled.
- 150 SE Coast. Cape Schank DGPS (38° 29'.5 S 144° 53'.2 E) permanently discontinued.
- 151 SE Coast. Crib Point DGPS established in position 38° 21'.6 S 145° 10'.1 E. Frequency 314 KHz.
- 152 Cancelled.
- 153 Cancelled.
- 154 Cancelled.
- 155 NE Coast. Bustard Head light K2964 (24° 01'.5 S 151° 45'.8 E) auxiliary red sector permanently discontinued.

NAVAREA X WARNINGS

Nil issued.

Navigational warnings in force as at 220001UTC JUN 07.

Auscoast

063 076 090 091 096 104 108 121 124 127 128 130 132 134 136 138 139 140 142 144 146 148 150 151 155.

Navarea X

004

Summary of mobile drilling rigs as at 220001UTC JUN 07.

Name	Position
Songa Venus	13° 46'.9 S 123° 13'.8 E
Ocean Epoch	13° 47'.3 S 123° 16'.9 E
Ocean Bounty	19° 31'.2 S 116° 06'.7 E
Markab	20° 00'.0 S 115° 22'.0 E
Sedco 703	20° 06'.4 S 115° 05'.1 E
Ensco 106	20° 34'.5 S 115° 38'.3 E
Atwood Eagle	21° 22'.9 S 113° 49'.1 E
Stena Clyde	21° 23'.8 S 114° 04'.1 E
Nan Hai VI	21° 27'.5 S 114° 02'.5 E
Jack Bates	21° 28'.9 S 113° 59'.3 E
Wilcraft	29° 01'.4 S 114° 37'.5 E

NAVAREA XIV WARNINGS

- 026 South Pacific. Marquesian Archipelago – Tuamotu Archipelago – Gambier Archipelago. Southern Islands. Since 080100 UTC June 7 local radio station, Mahina Radio, is unable to transmit on channel 2182 KHz. Channel 8291 KHz is operational for watch distress alerts. Meteorological forecast and navigational warnings are broadcast on channels 2620 KHz and 8803 KHz

Navarea XIV warnings in force as at 220001UTC JUN 07.

005 010 026.

HYDROGRAPHIC REPORTS

Nil Reports

AMENDMENTS TO ADMIRALTY LIST OF RADIO SIGNALS 2007

Edition No 13 dated 6 July 2007

VOLUME 2, NP 282, 2007/08

Published BA Wk 13/07
(Last Amendments: Edition No 12 dated 22 June 2007)

RADIO TIME SIGNALS

Page 242, SPAIN section.

Delete SPAIN section

Instituto Hidrográfico de la Marina, España Ad24/07

Page 243, SWITZERLAND section.

PRANGINS (HBG).

Delete entry and replace by:

PRANGINS (HBG) 46°24'N 6°15'E

75 A1A 25

Times of Transmission

H24

System

00s-15s	Other Services
16s	A-announcement of Time System change
17s	E-Set during DST
18s	H-Set during Standard Time
19s	L-announcement
20s	S-Start of Time Code
21s-27s	Minute
28s	P1-Parity: Sum of 21s-27s
29s-34s	Hour
35s	P2-Parity: Sum of 29s-34s
36s-41s	Day of Month
42s-44s	Day of Week
45s-49s	Month
50s-57s	Year (07, 08, 09 etc.)
58s	P3-Parity: Sum of 36s-57s
59s	No modulation

Second marker: One 100ms interruption at beginning of each second (except second 59)

Minute marker: Two 100ms interruptions at beginning of each minute

Hour marker: Three 100ms interruptions at beginning of each hour

12 hour marker: Four 100ms interruptions at 0000h and 1200h

METAS website Ad24/07

VOLUME 3, PART 2, NP 283(2), 2007/08

Published BA Wk 3/07

(Last Amendments: Edition No 12 dated 22 June 2007)

RADIO-FACSIMILE**Page 77, VMC AUSTRALIA WEATHER EAST (CHARLEVILLE).**

Delete and replace by:

VMC AUSTRALIA WEATHER EAST (CHARLEVILLE)		26°19'S 146°16'E	
	2628		1900-0500 EST
	5100		H24
	11030		
	13920		
	20469		
DIAGRAMS: pages 47, 79 and 80			
Map Areas			
AUST 0°.88°E 0°.173°E 50°S.66°E 50°S.162°W	MSL 10°S-90°S 0° east to 180°	SWP 40°S.6°W 6°S.154°E 8°S.78°W 7°N.160°W	IO 12°N.50°E 12°N.130°E 20°S.0° 20°S.180°
PSST 20°N.140°E 20°N.100°W 50°S.140°E 50°S.100°W	IOSST 20°N.30°E 20°N.150°E 50°S.30°E 50°S.150°E	CASEY 50°S.80°E 50°S.160°E 70°S.80°E 70°S.160°E	FDF 7°S.108°E 7°S.169°E 50°S.108°E 50°S.169°E
A 30°N.120°E 30°N.180° 35°S.120°E 35°S.180°	B 30°N.70°E 30°N.130°E 35°S.70°E 35°S.130°E	C 30°N.70°E 30°N.180° 35°S.70°E 35°S.180°	WW 0°.88°E 0°.173°E 53°S.88°E 35°S.173°E
ASIAN 40°N.70°E 40°N.180° 40°S.70°E 40°S.180°	SH 20°S-90°S All longitudes		
Schedule			
IO	Indian Ocean MSLP Anal (Manual) ¹	0000(12)	120/576
AUST	Australian MSLP Prog (H+36)	1200(12)	
	VMC / VMW Schedule, page 1 of 2	0015 1215	
	VMC / VMW Schedule, page 2 of 2	0030 1230	
	VMC / VMW Information Notice	0045	
	IPS Recommended Frequencies for VMC (Charleville)	0100	
	IPS Recommended Frequencies for VMW (Wiluna)	0130	
MSL	Indian Ocean MSLP Prog (H+36)	1245(12)	
SWP	South Pacific Ocean Total Waves (H+48)	1315(00)	
IO	Indian Ocean Total Waves (H+48)	1330(00)	
PSST	Pacific Ocean Sea Surface Temps (weekly)	1345	
AUST	Australian MSLP Prog (H+36)	0200(00)	
IOSST	Indian Ocean Sea Surface Temps (weekly)	1400	
CASEY	Casey Eastern and Western High Seas (H+48)	1415(00)	
AUST	Australia MSLP Anal (Manual)	0245(00) 1430(12)	
	Australian 500 hPa Anal	0300(00) 1500(12)	
	Australian MSLP Prog (H+36)	1515(12)	
	Voice broadcast information for VMW (Wiluna)	0315	
AUST	Australian MSLP Anal (Manual) ¹	0345(00)	
	Australian 500 hPa Prog (H+24)	0400(00) 1600(12)	
FDF	Australian MSLP 4 day forecast days 1 and 2	0430	
	Australian MSLP 4 day forecast days 3 and 4	0445	
	Australian MSLP 4 day forecast, days 1 and 2 ¹	0500	
	Australian MSLP 4 day forecast, days 3 and 4 ¹	0515	
	IPS Recommended Frequencies for VMC (Charleville)	1630	
	IPS Recommended Frequencies for VMW (Wiluna)	1700	
A	Asian (part A) Gradient Level Wind Anal (Manual)	0600(00) 1800(12)	
B	Asian (part B) Gradient Level Wind Anal (Manual)	0623(00) 1823(12)	
C	Asian MSLP Anal (Manual)	0645(00)	

(Continued on next page)

IO	Indian Ocean MSLP Anal (Manual)	0730(00)	1915(12)	
WW	Australian Wind Waves Ht(m) Prog (H+24)	0745(00)	1930(12)	
	Australian Swell Waves Ht(m) Prog (H+24)	0800(00)	1945(12)	
SWP	South Pacific Ocean MSLP Anal (Manual)		2000(12)	
CASEY	Casey Eastern and Western High Seas (H+24)		2015(12)	
SWP	South Pacific Ocean MSLP Anal	0830(00)		
AUST	Australian MSLP Anal (Manual)	0845(06)	2030(18)	
ASIAN	Asian 200 hPa Streamline Anal ²	0903(00)	2100(12)	
	Asian 500 hPa Streamline Anal ²	0923(00)	2120(12)	
	Asian 700 hPa Streamline Anal ²	0941(00)	2140(12)	
CASEY	Casey Eastern and Western High Seas (H+24)	1015(00)		
	Casey Eastern and Western High Seas (H+36)		2215(12)	
SH	SH 500 hPa Prog (H+48) ²	1030(00)	2230(12)	
	SH MSLP Prog (H+48)	1045(00)	2245(12)	
CASEY	Casey Eastern and Western High Seas (H+36)	1100(00)		
SH	SH 500 hPa Anal ²	1115(00)	2300(12)	
CASEY	Casey Eastern and Western High Seas (H+48)		2315(12)	
AUST	Australian MSLP Prog (H+36)		2330(00)	
ASIAN	Asian Sea Surface Temp Anal (weekly)	1130		
MSL	Indian Ocean MSLP Prog (H+48)		2345(12)	
	VMC / VMW Information Notice	1145		120/576
NOTES: (1) These charts are repeat broadcasts on 11030 kHz only via a directional aerial pointing from Charleville (VMC) towards Tasmania. (2) The Bureau of Meteorology is reviewing its charts and is planning to remove these charts.				

Bureau of Meteorology, Australia & Day Watson Ad25/07

Pages 77 & 78, VMC AUSTRALIA WEATHER WEATHER WEST (WILUNA).

Delete and replace by:

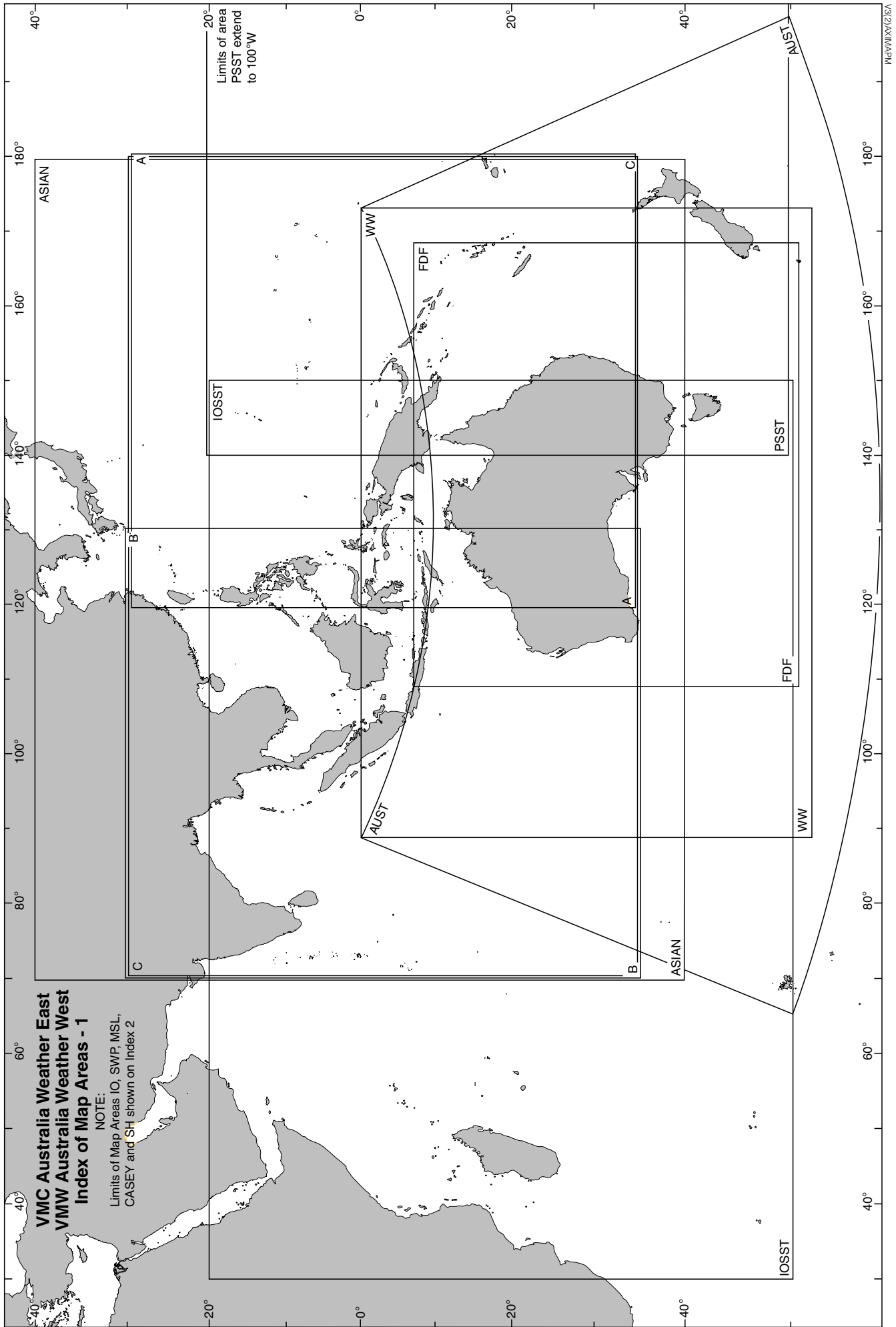
VMW AUSTRALIA WEATHER WEST (WILUNA)			26°21'S 120°34'E
	5755		1900-0500 WST
	7535		H24
	10555		
	15615		
	18060		0500-1900 WST
NOTE: See VMC Australia Weather East (Charleville) for Map Areas and Schedule.			
DIAGRAMS: pages 47, 79 and 80			

Bureau of Meteorology, Australia & Day Watson Ad25/07

Page 80, diagram, VMC Australia Weather East, VMW Australia Weather West, Index of Map Areas – 1.

Delete and replace by diagram on page 29

Bureau of Meteorology, Australia & Day Watson Ad25/07



RADIO WEATHER SERVICES AND NAVIGATIONAL WARNINGS

Page 99, AUSTRALIA, HOBART.

Delete entry and replace by:

HOBART			42°52'S 147°19'E	
A	2524	RT (MF)	Hobart	42°52'S 147°19'E
	4146	RT(HF)		
	6227			
B	8176	VHF		
C	Ch 67			
D	Ch 68			
E	Ch 82		Maatsuyker Island	43°39'S 146°16'E
NOTE: After prior announcement on frequencies 2182, 4125 & 6215 kHz & VHF Ch 16.				
DIAGRAMS: pages 27 and 107				
Weather Bulletins				
A, C-E: On receipt A: 0345 0903 2145	Weather warnings.			
A, C, D: 0345 0903 2145 On request E: 0703 2133	Weather forecasts.			
Navigational Warnings				
B: 0557	Navigational warnings for Auscoast Areas C, D and E.			
D: 0557	Navigational warnings.			

Marine and Safety Tasmania Ad25/07

Page 107, diagram, AUSTRALIA, MARITIME RADIO STATIONS, Hobart.

Delete frequencies 2524, 4620, 8176 kHz in approximate position 42°52'S 147°19'E and replace by: 2524, 4146, 6227, 8176 kHz

(former amendment Ad 3/07)

Marine and Safety Tasmania Ad25/07

VOLUME 5, NP 285, 2006/07

Published BA Wk 24/06

(Last Amendments: Edition No 11 dated 8 June 2007)

**THE 2007/08 EDITION OF THIS VOLUME HAS NOW BEEN PUBLISHED
THE 2006/07 EDITION IS CANCELLED**

VOLUME 5, NP 285, 2007/08

Published BA Wk 25/07

Notices accrued from BA Week 12/07 to BA Week 24/07, are re-issued along with new information

Page iii, DIRECTIONS FOR UPDATING THIS VOLUME

below,

RECORD OF AMENDMENTS Weekly Notices to Mariners (Section VI)

insert:

This edition was published in week 25/07. The first Weekly Notice to Mariners was issued in week 25/07

UKHO Ad25/07

CHAPTER 9 VHF DSC, LIST OF COAST STATIONS FOR SEA AREA A1

Page 95, Algeria, after Alaska (USA).

Insert entry:

Algeria

Alger	006052110	36°44'N 3°10'E	50	Operational (CNOSS Alger)
Cherchell	006052111	36°36'N 2°12'E	50	Operational (CNOSS Alger)
Tenes	006052113	36°29'N 1°23'E	50	Operational (CNOSS Alger)
Annaba	006053814	36°54'N 7°45'E	50	Operational (CROSS Jijel)
Bejaia	006053815	36°45'N 5°04'E	50	Operational (CROSS Jijel)
Skikda	006053816	36°52'N 6°54'E	50	Operational (CROSS Jijel)
Dellys	006054112	36°55'N 3°53'E	50	Operational (CNOSS Alger)
Oran	006054117	35°42'N 0°38'W	50	Operational (CROSS Oran)
Mostaganem	006054118	35°56'N 0°06'E	50	Operational (CROSS Oran)
Ghazaouet	006054119	35°06'N 1°51'W	50	Operational (CROSS Oran)

Algerian Maritime Administration Ad25/07

Page 113, Korea, South (Republic of).

Delete entry and replace by:

Korea, South (Republic of)

Inch'ön (Incheon) Korea Coast Guard	004401001	37°30'N 126°30'E	50	Operational (MRCC Inch'ön)
Tonghae (Donghae) Korea Coast Guard	004401002	37°31'N 129°07'E	50	Operational (MRCC Tonghae)
Mokp'o (Mokpo) Korea Coast Guard	004401003	34°46'N 126°23'E	50	Operational (MRCC Mokp'o)
Pusan (Busan) Korea Coast Guard	004401004	35°07'N 129°02'E	50	Operational (MRCC Pusan)
Cheju (Jeju) Coast Guard	004401005	33°21'N 126°49'E	50	Operational (MRCC Cheju)
Cheju (Jeju) Radio	004400701	33°29'N 126°29'E	25	Operational (MRCC Cheju)
Cheju (Jeju) Radio	004400702	33°14'N 126°33'E	25	Operational (MRCC Cheju)
Inch'ön (Incheon) Radio	004400003	37°29'N 126°33'E	25	Operational (MRCC Inch'ön)
Inch'ön (Incheon) Radio	004400004	37°13'N 126°09'E	25	Operational (MRCC Inch'ön)
Gunsan Radio	004400201	36°18'N 126°38'E	25	Operational (MRCC Inch'ön)
Gunsan Radio	004400501	35°57'N 126°41'E	25	Operational (MRCC Inch'ön)
Kangnŭng (Kangreung) Radio	004400602	37°42'N 129°00'E	25	Operational (MRCC Tonghae)
Kangnŭng (Kangreung) Radio	004400603	37°26'N 129°10'E	25	Operational (MRCC Tonghae)
Kangnŭng (Kangreung) Radio	004400604	38°11'N 128°35'E	25	Operational (MRCC Tonghae)
Mokp'o (Mokpo) Radio	004400304	34°44'N 126°07'E	25	Operational (MRCC Mokp'o)
Mokp'o (Mokpo) Radio	004400307	35°08'N 126°06'E	25	Operational (MRCC Mokp'o)
Mokp'o (Mokpo) Radio	004400308	34°41'N 125°27'E	25	Operational (MRCC Mokp'o)
Mokp'o (Mokpo) Radio	004400309	34°48'N 126°24'E	25	Operational (MRCC Mokp'o)
Mokp'o (Mokpo) Radio	004400310	34°27'N 126°37'E	25	Operational (MRCC Mokp'o)
Pusan (Busan) Radio	004400101	35°05'N 129°03'E	25	Operational (MRCC Pusan)
Pusan (Busan) Radio	004400103	34°48'N 128°25'E	25	Operational (MRCC Pusan)
Pusan (Busan) Radio	004400105	35°08'N 129°02'E	25	Operational (MRCC Pusan)
Pusan (Busan) Radio	004400106	35°09'N 128°44'E	25	Operational (MRCC Pusan)
Ulsan Radio	004400102	35°35'N 129°24'E	25	Operational (MRCC Pusan)
Pohang Radio	004400401	36°30'N 129°26'E	25	Operational (MRCC Tonghae)
Pohang Radio	004400402	36°51'N 129°24'E	25	Operational (MRCC Tonghae)
Ulreung Radio	004400403	37°28'N 130°53'E	25	Operational (MRCC Tonghae)
Ulreung Radio	004400404	37°32'N 130°52'E	25	Operational (MRCC Tonghae)
Yeosu Radio	004400104	34°59'N 127°52'E	25	Operational (MRCC Mokp'o)
Yeosu Radio	004400305	34°45'N 127°44'E	25	Operational (MRCC Mokp'o)
Yeosu Radio	004400306	34°26'N 127°30'E	25	Operational (MRCC Mokp'o)

Korean Coast Guard Ad25/07

CHAPTER 10 MF DSC, LIST OF COAST STATIONS FOR SEA AREA A2

Page 133, Algeria, after Alaska (USA).

Insert entry:

Algeria

Alger	006052110	36°44'N 3°10'E	200	Operational (CNOSS Alger)
Annaba	006053814	36°54'N 7°45'E	200	Operational (CROSS Jijel)
Oran	006054117	35°42'N 0°38'W	200	Operational (CROSS Oran)

Algerian Maritime Administration Ad25/07

Page 142, Korea, South (Republic of).

Delete entry and replace by:

Korea, South (Republic of)

Inch'ön (Incheon) Korea Coast Guard	004401001	37°30'N 126°30'E	250	Operational (MRCC Inch'ön)
Tonghae (Donghae) Korea Coast Guard	004401002	37°31'N 129°07'E	250	Operational (MRCC Tonghae)
Mokp'o (Mokpo) Korea Coast Guard	004401003	34°46'N 126°23'E	250	Operational (MRCC Mokp'o)
Pusan (Busan) Korea Coast Guard	004401004	35°07'N 129°02'E	250	Operational (MRCC Pusan)
Cheju (Jeju) Korea Coast Guard	004401005	33°21'N 126°49'E	250	Operational (MRCC Cheju)
Inch'ön (Incheon) Radio	004400003	37°29'N 126°33'E	150	Operational (MRCC Inch'ön)
Pusan (Busan) Radio	004400101	35°05'N 129°03'E	150	Operational (MRCC Pusan)
Cheju (Jeju) Radio	004400701	33°29'N 126°29'E	150	Operational (MRCC Cheju)

Korean Coast Guard Ad25/07

CHAPTER 13 MARITIME SAFETY INFORMATION

Page 209, NAVAREA CO-ORDINATORS, NAVAREA I (United Kingdom).

Delete line 9, Telephone: +44(0)1823 723315, and replace by:

Telephone: +44(0)1823 353448

Navarea I Co-ordinator Ad25/07

CHAPTER 15 NAVTEX

Page 261, NAVTEX COAST STATIONS, Ukraine.

Delete entry and replace by:

Ukraine

Odesa [C] [X] ¹	46°29'N 30°44'E	280	Operational
Kerch [G] [U] ¹	45°22'N 36°29'E	120	Operational

1) English broadcasts 490 kHz

Ukraine State Hydrographic Service Ad25/07

Page 264, diagram, X2, NAVTEX - MSI BROADCASTS, Mediterranean and Black Sea (NAVAREA III).

Amend [C] Odesa in position 46°29'N, 30°44'E to read: [X] [C] Odesa

Amend [B] Kerch in position 45°22'N, 36°29'E to read: [U] [G] Kerch

Ukraine State Hydrographic Service Ad25/07

Page 280, STATIONS WITH OPERATIONAL NAVTEX FACILITIES, GERMANY, Pinneberg (Hamburg) [L] German Bight and Western and Southern Baltic.

Delete entries and replace by:

Pinneberg (Hamburg) [L]

53°43'N 9°55'E

TELEPHONE: +49 40 6690 1807

Diagram X1

FAX: +49 40 6690 1261

TELEX: +41 211291 HADW D

NAVTEX [L] German Bight

Frequency: 490 kHz Language: German (local bcst)

TIME UT(GMT)	WEATHER BULLETINS	NAVIGATIONAL WARNINGS	WIND / GALE WARNINGS	ICE REPORTS
0150				
0550	●	●	●	
0950				
1350	●	●	●	●
1750				
2150	●	●	●	

NAVTEX [L] Western and Southern Baltic

Frequency: 490 kHz Language: German (local bcst)

TIME UT(GMT)	WEATHER BULLETINS	NAVIGATIONAL WARNING	WIND / GALE WARNINGS	ICE REPORTS
0150	●	●	●	
0550				
0950	●	●	●	●
1350				
1750	●	●	●	
2150				

German Notices 17/2007 Ad25/07

Page 293, UKRAINE.

Delete entry and replace by:

UKRAINE

Kerch [G]

45°22'N 36°29'E

TELEPHONE: +380 65 6149317

Diagram X2

FAX: +380 65 6121436

MMSI: 002723659

NAVTEX [G]

TIME UT(GMT)	WEATHER BULLETINS	NAVIGATIONAL WARNINGS	ICE REPORTS
0100		●	
0500		●	
0900	●	●	
1300		●	●
1700	●	●	
2100		●	

Kerch [U]

45°22'N 36°29'E

TELEPHONE: +380 65 6149317

Diagram X2

FAX: +380 65 6121436

MMSI: 002723659

NAVTEX [U]

Frequency: 490 kHz Language: English

TIME UT(GMT)	WEATHER BULLETINS	NAVIGATIONAL WARNINGS	ICE REPORTS
0320		●	
0720		●	
1120	●	●	
1520		●	●
1920	●	●	
2320		●	

Odesa [C]

46°29'N 30°44'E

TELEPHONE: +380 48 7507845

Diagram X2

FAX: +380 482 210908

MMSI: 002725613

NAVTEX [C]

TIME UT(GMT)	WEATHER BULLETINS	NAVIGATIONAL WARNINGS	ICE REPORTS
0020		●	
0420		●	
0820	●	●	
1220		●	●
1620	●	●	
2020		●	

Odesa [X]

46°29'N 30°44'E

TELEPHONE: +380 48 7507845

Diagram X2

FAX: +380 482 210908

MMSI: 002725613

NAVTEX [X]

Frequency: 490 kHz Language: English

TIME UT(GMT)	WEATHER BULLETINS	NAVIGATIONAL WARNINGS	ICE REPORTS
0350		●	
0750		●	
1150	●	●	
1550		●	●
1950	●	●	
2350		●	

Ukraine State Hydrographic Service Ad25/07

Page 298, 518 kHz NAVTEX BROADCAST SCHEDULES BY NAVAREA, NAVAREA III.

Delete UKRAINE Kerch [B] entry. Insert new Kerch [G] entry after TURKEY Antalya [F]:

III	UKRAINE	Kerch	[G]	0100, 0500, 0900, 1300, 1700, 2100
-----	---------	-------	-----	------------------------------------

Delete Ukraine Odesa [C] entry and replace by:

III	UKRAINE	Odesa	[C]	0020, 0420, 0820, 1220, 1620, 2020
-----	---------	-------	-----	------------------------------------

Ukraine State Hydrographic Service Ad25/07

CHAPTER 16 DISTRESS, SEARCH AND RESCUE**Page 318, ALGERIA.**

Delete entry and replace by:

ALGERIA**See diagram R5**

National SAR Agency: RCC D'Alger Address: 123, Rue Tripoli Husein Dey, BP-428, Alger Tel: +213 21 495102 Fax: +213 21 495112 E-mail: mrcc_alger@mdn.dz			
The Coast Guard is responsible for co-ordinating Search and Rescue maritime operations. A network of Coast Radio Stations maintains a continuous listening watch on international distress frequencies.			
	Telephone +213	Fax +213	Others
MRCC (CNOSS) ALGIERS	21 710178	21 714108	Telex: +408 55211 E-mail: mrccalgiers@mdn.dz
(CROSS) ORAN	41 396701	41 396701	Telex: +408 81488
(CROSS) JIJEL	34 478478	34 474591	Telex: +408 84959
ARCC ALGIERS	21 853256	21 853260	AFTN: DAARYCYX Telex: +408 65335 E-mail: mcc_alger@mdn.dz
ALGER RADIO	21 203184 21 203179 21 202249 21 806516	21 203217	Telex: +408 63601
ANNABA RADIO	38 868089 38 804231 38 868457	38 804230	
BEJAIA RADIO	34 235766	34 235773	
GHAZAQUET RADIO	43 324900 43 324918 43 323600	43 324910	Telex: +408 18951
ORAN RADIO	41 433605 40 206937	41 431328	Telex: +408 21287 & 21288
SIKIKDA RADIO	38 755106	38 754836	Telex: +408 87018
TENES RADIO	27 766341 27 766999 27 766168		Telex: +408 78888

CNOSS – MRCC Algiers Ad25/07

Page 348, MALAYSIA.

Delete entry and replace by:

MALAYSIA

See diagram R14

National SAR Agency: Malaysian Maritime Enforcement Agency Address: Prime Minister's Department, 4-11th Floor, One IOI Square, IOI Resort, 62502 Putrajaya, Malaysia Tel: +60 3 89957000 Fax: +60 3 89473601 E-mail: mrccputrajaya@mmea.gov.my			
The Malaysian Maritime Enforcement Agency is responsible for co-ordinating Search and Rescue operations. A network of stations monitor VHF and MF DSC and 2182 kHz and VHF Ch 16.			
	Telephone +60	Fax +60	Others
MRCC PUTRAJAYA	3 89413140	3 89413129	E-mail mrccputrajaya@mmea.gov.my

Peninsular Malaysia

	Telephone +60	Fax +60	Others
MRSC JOHOR BAHRU Operations Room	7 2219213 7 2264013	7 2224739 7 2224739	
MRSC KUANTAN	9 5734066	9 5734177	
MRSC LANGKAWI	4 9665307	4 9669543	

Sabah and Sarawak

	Telephone +60	Fax +60	Others
MRSC KOTA KINABALU	88 429803	88 427075	
MRSC KUCHING	82 367943	82 364941	

Malaysian Maritime Enforcement Agency Ad25/07

Page 373, UNITED STATES OF AMERICA, Northern Mariana Islands.

Delete entry and replace by:

Northern Mariana Islands

	Telephone +1	Fax +1	Other
JRSC GUAM	671 355 4910 671 355 4905 671 564 8724	671 355 4831	E-mail rccguam@uscg.mil

United States Coast Guard Ad25/07

VOLUME 6, PART 4, NP 286(4), 2006/07

Published BA Wk 35/06

(Last Amendments: Edition No 12 dated 22 June 2007)

Page 31, AUSTRALIA, LUCINDA, Queensland (HINCHINBROOK), Pilots and Port, PROCEDURE.

Delete section (2) and replace by:

(2) **Pilot boards** 4 n miles ENE of Lucinda Pt for the offshore berth.

Capt John Preston, Regional Hr Mr Ad25/07

Page 75, CHINA, CHENGSHAN JĀIO.

Delete diagram CHENGSHAN JĀIO VESSEL TRAFFIC SYSTEM and replace by diagram on page 37

Yantai Maritime Bureau Vessel Traffic Management Centre Ad25/07

Pages 127 and 128, CHINA, YANTAI, Vessel Traffic Service.

Delete section and replace by:

Vessel Traffic Service**AREA:**

The Yantai VTS area comprises the water area within a 15 n miles radius of Yantaishan Zui Lt (37°32'88N 121°23'79E).

CONTACT DETAILS:

Call: Yantai Shan VTS
 VHF Frequency: Ch 09
 Telephone: +86(0)535 6216365
 +86(0)535 6226477
 Fax: +86(0)535 6216365

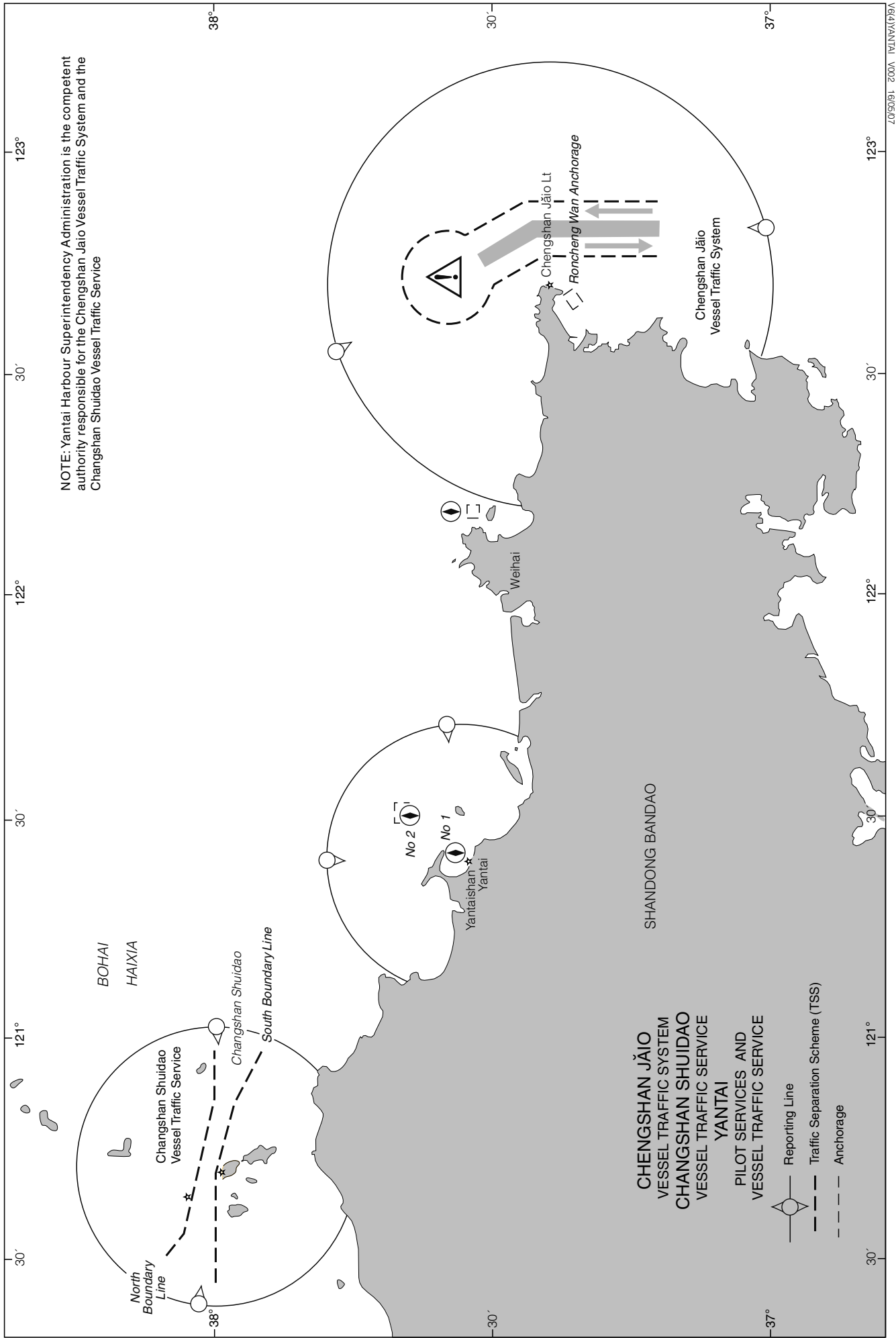
HOURS: H24**PROCEDURE:**

- (1) **Participation is mandatory** for all vessels passing through, mooring in or operating in the VTS area.
- (2) Reporting Lines have been established as follows:
 - (a) **First Reporting Line:** A circle of radius 15 n miles centred on Yantaishan Zui Lt
 - (b) **Second Reporting Line:**
 - (i) N Fairway: a circle of radius 3 n miles centred on Xiaoshanzi Lt (37°35'63N 121°25'94E)
 - (ii) E Fairway: a circle of radius 2 n miles centred on No 0 Lt buoy (37°31'45N 121°33'80E)
- (3) **Reporting:** Inward-bound vessels must report to Yantai VTS on VHF Ch 09 when crossing the first Reporting Line, stating:
 - (a) Vessel's name
 - (b) Position
 - (c) Purpose for entering the port
 - (d) Type and quantity of dangerous goods on board (vessels carrying dangerous cargo only)
 - (e) Other information required by the VTS Centre
- (4) Vessels crossing the second Reporting Line when entering or departing the port must report to Yantai VTS on VHF Ch 09 stating:
 - (a) Name
 - (b) Position
- (5) After berthing alongside or anchoring, vessels must report their name and berthing or anchoring positions to Yantai VTS.
- (6) Before leaving berth or weighing anchor, vessels must report their name, position and destination port to Yantai VTS.
- (7) In the event of a traffic incident, pollution incident or other emergency affecting or discovered by a vessel within the VTS area, that vessel must immediately report to Yantai VTS.
- (8) Vessels discovering any abnormality affecting navigation marks or navigation aids, obstacle obstructing safe passage, floating material or other circumstances hindering safe passage should immediately report to Yantai VTS.
- (9) Unless regulations require otherwise, vessels which are required to be fitted with AIS shall ensure that their AIS is operational at all times and shall ensure that their AIS information is correct.
- (10) Vessels shall report to Yantai VTS 30 mins before commencing and 30 mins after completing the following operations:
 - (a) Dismantling and repairing boilers, main engines, anchor winches, steering gear or main navigation equipment
 - (b) Engine tests, vessel trials etc.
 - (c) Lowering boats and practising rescues
 - (d) Other operations which could affect traffic safety
- (11) VHF Ch 09 is the working channel for Yantai VTS. Vessels must not use this channel for other purposes.
- (12) Vessels must maintain a listening watch on VHF Ch 09 when moving, moored or operating in the VTS area.
- (13) The languages to be used when communicating with Yantai VTS shall be standard Chinese or English.

NOTES:

- (1) Yantai VTS broadcasts vessel movements, the condition of navigation marks, hydrological and meteorological conditions, navigation warnings and notices and other traffic safety information regularly or when necessary. Such information can be provided to vessels on request.
- (2) Vessels may request navigational assistance when in sailing difficulties, in severe weather, or if vessel has faults or damaged. Vessels must inform Yantai VTS immediately when assistance is no longer required.
- (3) Yantai VTS may offer assistance, advice, or issue warnings to vessels when necessary.

Yantai Maritime Bureau Vessel Traffic Management Centre Ad25/07



Z050501 0002 160501 0101NA(1)P/8A

AMENDMENTS TO ADMIRALTY SAILING DIRECTIONS 2007

NP 13 Australia Pilot Volume I (2005 Edition)

South Australia - Port Lincoln — BHP Jetty

349

Paragraph 11.46 *1* lines 4-5 *Delete* BHP To with

350

Paragraph 11.52 *2* lines 4-8 *Replace by:*

...may best be seen on the chart.

Paragraph 11.54 *1* line 4 *For* (11.55) *Read* (disused)

Paragraph 11.55 *3* *Delete*

Australian Hydrographic Office

(A248634)

[Ad 25/07]

NP 15 Australia Pilot Volume III (2005 Edition)

Queensland - Hinchinbrook Channel — Pilotage

246

Paragraph 8.52 *2* lines 7-10 *Replace by:*

Pilots are not available for Hinchinbrook Channel.

See *Admiralty List of Radio Signals Volume 6(4)*.

247

Paragraph 8.58 *7* line 4 *Delete* and the pilot boarding ground

Maritime Safety Queensland

(A244886)

[Ad 25/07]

NP 34 Indonesia Pilot Volume II (2006 Edition)

Kalimantan - Tanjung Bara Coal Terminal — Depth

254

Paragraph 9.259 *1* line 4 *Replace by:*

...light beacon (S cardinal), and clear of an isolated shoal patch with a depth of 1.4 m over it, which lies 1½ miles SSW of the light beacon. From the more N boarding area...

Indonesian Chart 126

[Ad 25/07]