



Australian Notices to Mariners are the authority for correcting Australian Charts

AUSTRALIAN NOTICES TO MARINERS

© Commonwealth of Australia 2006 - Copyright restrictions apply to Notices to Mariners



Notices 343 - 379

List of Temporary and Preliminary Notices in force Cumulative List – April 2006

Published fortnightly by the Australian Hydrographic Service

R. NAIRN
Hydrographer of Australia

- SECTIONS.**
- I. **Australian Notices to Mariners, including blocks and notes.**
 - II. **Amendments to Admiralty List of Lights and Fog Signals, Vol K**
 - III. **Navigational Warnings.**
 - IV. **Hydrographic Reports.**
 - V. **Amendments to Admiralty List of Radio Signals (NP 281(2), 282, 283(2), 285, 286(4))**
 - VI. **Amendments to Admiralty Sailing Directions (NP 9, 13, 14, 15, 33, 34, 35, 36, 39, 44, 51, 60, 61, 62, 100, 136)**

[British Admiralty Notices to Mariners](#)
[New Zealand Notices to Mariners](#)

The substance of these notices should be inserted on the charts affected.

Bearings are referred to the true compass and are reckoned clockwise from North; those relating to lights are given as seen by an observer from seaward. Positions quoted in permanent notices relate to the horizontal datum for the chart(s). When preliminary or temporary notices affect multiple charts, positions will be provided in relation to only one horizontal datum and that datum will be specified. When the multiple charts do not have a common horizontal datum, mariners will be required to adjust the position(s) for those charts not on the specified datum. The range quoted for a light is its nominal range. Depths are with reference to the chart datum of each chart. Heights are above mean high water springs or mean higher high water, as appropriate.

The capital letter (P) or (T) after the number of any notice denotes a preliminary or temporary notice respectively, which are contained separately at the end of the permanent notices. A star () adjacent to the number of a notice indicates that the notice is based on original information.*

Mariners are particularly requested to notify the AUSTRALIAN HYDROGRAPHIC SERVICE, Locked Bag 8801 Wollongong, NSW 2500 (Fax 02-4221 8599, e-mail Hydro.NTM@defence.gov.au or, alternatively by filling in and submitting the [Hydrographic Notes](#) forms located on the web site – www.hydro.gov.au), immediately on the discovery of new dangers or suspected dangers to navigation. For changes or defects in aids to navigation notify AusSAR (Fax 02-6230 6868 or email rccaus@amsa.gov.au).

Copies of these notices can be obtained from the AUSTRALIAN HYDROGRAPHIC OFFICE, 8 Station Street, Wollongong; Distributors for the sale of Australian Navigational Products; AHS website www.hydro.gov.au or register for eNotices at www.hydro.gov.au/enotices/enotices.htm.

The Notices may be copied for the purpose of inserting their substance on official charts and other publications. However, any copies of the notices may not be sold for profit.

IMPORTANT NOTICE

This edition of Notices to Mariners includes all significant information affecting AHS products which the AHS has become aware of since the last edition. All reasonable efforts have been made to ensure the accuracy and completeness of the information,

including third party information, on which these updates are based. The AHS regards third parties from which it receives information as reliable, however the AHS cannot verify all such information and errors may therefore exist. The AHS does not accept liability for errors in third party information.

© Commonwealth of Australia 2006

This work is copyright. Apart from any use permitted under the Copyright Act 1968, no part may be reproduced by any process, adapted, communicated or commercially exploited without prior written permission from The Commonwealth represented by the Australian Hydrographic Service. Copyright in some of the material in this publication may be owned by another party and permission for the reproduction of that material must be obtained from the owner.

NUMERICAL INDEX OF CHARTS AFFECTED

Edition No 8

14 April 2006

Notices	Aus Chart, INT Chart, ENC Cell
343.....	Aus 810, 811, 818, 819, 824, 826, 831, 834, 837, AU5XX113, 5111X4
344.....	Amendment to Australian Notice to Mariners No 2
345.....	Amendment to Australian Notice to Mariners No 22
346.....	Aus 198, 199
347.....	Aus 197, 200, AU5X200E
348.....	Aus 4, AU5XX4P1
349.....	Aus 26, 28, AX72026
350.....	Aus 4070, 4071, INT 70, 71
351.....	Aus 57
352.....	Aus 334, 754
353.....	Au 125
354.....	Aus 348
355.....	Aus 348
356.....	Aus 349, 4060, 4074, 4601, 4709, INT 60, 74, 601, 709
357.....	Aus 158
358.....	Aus 157
359.....	Cumulative List of Australian Notices to Mariners – April 2006
360(T).....	Aus 238
361(T).....	Aus 244, 245, AU5244X5
362(T).....	Aus 249, 370, 823, AU422149
363(T).....	Aus 256, 257, AU5XX257
364(T).....	Aus 256, 257, AU420146, 5XX257
365(T).....	Aus 256, 371, 827, AU419146, 420146
366(T).....	Aus 373, 830, 831, AU417145
367(T).....	Aus 270, 832, 833, AU415144
368(T).....	Aus 301, 376, 700, 4720, INT 720, AU220140, 411141
369(T).....	Aus 6
370(P).....	Aus 308, 442, 720, 721, 4720, INT 720, AX70308, 70721
371(P).....	Aus 50, 324, 415, 4722, INT 722
372(T).....	Aus 134
373(P).....	Aus 170, 355
374(P).....	Aus 355, 422
375(P).....	Aus 143, 144, 158
376(T).....	Aus 155
377(T).....	Aus 154
378(P).....	Aus 158
379(T).....	Temporary and Preliminary Notices in force

343 AUSTRALIA - Products.

AHO (A188170).

New Electronic Navigation Chart (Seafarer ENC)

Cell Name	Released	Title
AU5XX113	17 Mar 2006	Australia – Western Australia - Port of Fremantle
AU5111X4	17 Mar 2006	Australia – Western Australia – Cockburn Sound

New edition to be published shortly

Chart	Title	Scale	Publication Date	Expected Stock Availability
Aus 810	Australia - East Coast - New South Wales - Port Stephens to Crowdy Head	1:150 000	17/3/2006	14/4/2006
Aus 811	Australia - East Coast - New South Wales - Crowdy Head to Nambucca Heads	1:150 000	17/3/2006	14/4/2006
Aus 818	Australia - East Coast - Queensland – Sandy Cape to Bustard Head	1:150 000	17/3/2006	14/4/2006
Aus 824	Australia - East Coast - Queensland - Penrith Island to Whitsunday Island	1:150 000	17/3/2006	14/4/2006
Aus 834	Australia - East Coast - Queensland – Claremont Isles to Cape Weymouth	1:150 000	17/3/2006	14/4/2006
Aus 819	Australia - East Coast - Queensland – Bustard Head to North Reef	1:150 000	31/3/2006	28/4/2006
	Inset: Fitzroy River	1:150 000		
Aus 826	Australia - East Coast - Queensland – Bowen to Cape Bowling Green	1:150 000	31/3/2006	28/4/2006
Aus 831	Australia - East Coast - Queensland – Low Islets to Cape Flattery	1:150 000	31/3/2006	28/4/2006
Aus 837	Australia - East Coast - Queensland – Olinda Entrance to Maer Island	1:150 000	31/3/2006	28/4/2006

344 AUSTRALIA - Products - Amendment to Australian Notice to Mariners No 2.

AHO (A188069).

Amend address for Nautical Supplies Pty Ltd to:
80 Frances Bay Drive
Darwin 0800

345 AUSTRALIA - Products - Amendment to Australian Notice to Mariners No 22.

R Summerson (A187661).

Amend para 22 to read :

..... following geographic positions:

(a) 23° 10' S 151° 56' E	(b) 23° 53' S 152° 28' E	(c) 23° 55' S 152° 28' E
(d) 23° 57' S 152° 26' E	(e) 23° 57' S 152° 24' E	(f) 23° 32' S 151° 55' E
(g) 23° 36' S 151° 39' E	(h) 23° 33' S 151° 35' E	(i) 23° 30' S 151° 35' E
(j) 23° 25' S 151° 53' E	(k) 23° 20' S 151° 50' E	(l) 23° 20' S 151° 40' E
(m) 23° 15' S 151° 40' E	(n) 23° 10' S 151° 52' E	(o) 23° 10' S 151° 56' E

346* AUSTRALIA - NEW SOUTH WALES - Botany Bay - Buoyage.

Australian Maritime Systems (A187547).

Aus 198 [853/2005]

Insert [accompanying block](#) 33° 58'.0 S 151° 11'.0 E

Aus 199 [882/2005]

Insert [accompanying block B](#) 33° 57'.2 S 151° 11'.0 E
[accompanying block A](#) 33° 58'.1 S 151° 11'.0 E

347* AUSTRALIA - NEW SOUTH WALES - Ben Buckler - Obstruction northeastward.
HMAS *Diamantina* (A188620).

Aus 197 [933/2005]

Insert depth, 48m , enclosed by danger circle, with legend
Obstn 33° 52'.10 S 151° 18'.19 E

Aus 200 [74/2006]

Insert depth, 48m , enclosed by danger circle, with legend
Obstn 33° 52'.190 S 151° 18'.119 E

AU5X200E [NC 20/1/2006]

348* AUSTRALIA - QUEENSLAND - Weipa - Depths.
Maritime Safety Queensland (mA13180).

Aus 4 [124/2006]

Insert [accompanying block](#) 12° 40'.5 S 141° 48'.5 E

Aus 4 (plan: Port of Weipa)

Insert [accompanying block](#) 12° 40'.5 S 141° 48'.5 E

AU5XX4P1

349* AUSTRALIA - NORTHERN TERRITORY - Darwin - Hudson Creek - Mooring buoys.
DPC NT (A188476).

Aus 26 [169/2006]

Insert mooring buoy 12° 28'.324 S 130° 56'.652 E
12° 28'.358 S 130° 56'.577 E

Aus 28 (plan: East Arm) [169/2006]

Insert mooring buoy 12° 28'.358 S 130° 56'.577 E

AX 72026 [169/2006]

Insert mooring buoy 12° 28'.324 S 130° 56'.652 E
12° 28'.358 S 130° 56'.577 E

350 INDONESIA - Sumatra - Enggano Island - Light.
List of Lights Vol K/2006 -- 0895
Indonesian Notices to Mariners Dec 2004 (A188357).

Aus 4070 (INT 70) [598/2005]

Insert light 5° 21'.0 S 102° 17'.4 E

Aus 4071 (INT 71) [306/2006]

Insert light 5° 21'.0 S 102° 17'.4 E

351* WESTERN AUSTRALIA - Dampier - Anchorages.
Dampier Port Authority (A187736).

Aus 57 [170/2006]

Insert designated anchor berth, with 1M diameter swinging circle

WA 20	20° 20'.10 S	116° 35'.31 E
WA 21	20° 21'.19 S	116° 34'.28 E
WA 22	20° 22'.55 S	116° 34'.75 E
WA 23	20° 23'.77 S	116° 34'.75 E
WA 24	20° 24'.93 S	116° 34'.75 E
WA 25	20° 19'.77 S	116° 34'.14 E
WA 26	20° 20'.56 S	116° 33'.14 E
WA 27	20° 21'.60 S	116° 32'.75 E
WA 28	20° 22'.55 S	116° 33'.50 E
WA 29	20° 23'.77 S	116° 33'.50 E
WA 30	20° 24'.93 S	116° 33'.50 E

352* WESTERN AUSTRALIA - Rottnest Island - Fish aggregating devices.
PGFC (A187664).

Aus 334 [49/2006]

Insert	special conical buoy with legend (<i>Nov-May</i>)	31° 57'.50 S	115° 15'.82 E
Substitute	special conical buoy with legend (<i>Nov - May</i>) for fixed point with legend FAD (see Note)	31° 54'.5 S 32° 00'.0 S 32° 03'.2 S 32° 05'.0 S 32° 08'.5 S	115° 12'.0 E 115° 13'.5 E 115° 19'.5 E 115° 11'.0 E 115° 10'.5 E
Delete	fixed point with legend FAD (see Note)	32° 00'.0 S	115° 20'.0 E
	note	31° 57'.3 S 31° 32'.8 S	115° 15'.8 E 115° 49'.5 E

Aus 754 [49/2006]

Insert	special conical buoy with legend (<i>Nov-May</i>)	31° 57'.50 S	115° 15'.82 E
Substitute	special conical buoy with legend (<i>Nov - May</i>) for fixed point with legend FAD (see Note)	31° 54'.5 S 32° 00'.0 S 32° 03'.2 S 32° 05'.0 S 32° 08'.5 S	115° 12'.0 E 115° 13'.5 E 115° 19'.5 E 115° 11'.0 E 115° 10'.5 E
Delete	fixed point with legend FAD (see Note)	32° 00'.0 S	115° 20'.0 E
	note	31° 57'.3 S 31° 15'.4 S	115° 15'.8 E 115° 35'.7 E

353* SOUTH AUSTRALIA - Kangaroo Island - Kingscote - Light beacon.
DOTSA (A161220).

Aus 125 (plan: Kingscote Harbor) [232/2005]

Insert	starboard lateral light beacon, <i>Fl. G. 4s 2M</i> , without topmark	35° 39'.004 S	137° 41'.635 E
--------	---	---------------	----------------

354* SOUTH AUSTRALIA - Carpenters Rock to Bungaloo Bay - Leading lights.
DOTSA (A161220).

Aus 348 [445/2005]

Insert	light, <i>2F. Bu</i> dashed line in a direction 227.1° for 0.8M, thence a firm line for 2.2M with legend <i>047.1°</i> , emanating from (a)	(a) 37° 54'.73 S	140° 23'.82 E
	light, <i>2F. R</i> dashed line in a direction 217.7° for 0.8M, thence a firm line for 2.2M with legend <i>037.7°</i> , emanating from (a)	(a) 37° 57'.10 S	140° 28'.48 E

355* SOUTH AUSTRALIA - Port MacDonnell - Light.
DOTSA (A161220).

Aus 348 (plan: Port MacDonnell) [354/2006]

Insert	light, <i>F</i>	38° 03'.333 S	140° 41'.950 E
--------	-----------------	---------------	----------------

356* AUSTRALIA - VICTORIA - Port Campbell - Gas pipeline and platform southward.

Former Notice - 1015(P)/2005 is cancelled
Woodside Energy Ltd (A170188).

Aus 349 [313/2006]

Insert	accompanying block	39° 00'.0 S	143° 00'.0 E
	accompanying note	39° 34'.5 S	142° 05'.0 E

Aus 4060 (INT 60) [306/2006]

Insert	production platform	39° 14'.2 S	142° 54'.1 E
--------	---------------------	-------------	--------------

Aus 4074 (INT 74) [952/2005]

Insert	production platform	39° 14'.2 S	142° 54'.1 E
--------	---------------------	-------------	--------------

Aus 4601 (INT 601) [266/2006]

Insert	production platform	39° 14'.2 S	142° 54'.1 E
--------	---------------------	-------------	--------------

Aus 4709 (INT 709) [900/2005]

Insert	production platform	39° 14'.2 S	142° 54'.1 E
--------	---------------------	-------------	--------------

357* AUSTRALIA - VICTORIA - Port Phillip - Balcombe Bay - Lights altered.

Victorian Notice 40/2006 (A188059).

Aus 158 [56/2006]

Amend	light characteristic to, <i>Fl(4) Y. 6s</i>	38° 13'.909 S	144° 59'.917 E
		38° 13'.928 S	145° 01'.059 E
		38° 14'.415 S	145° 01'.046 E
		38° 14'.395 S	144° 59'.903 E

358* AUSTRALIA - VICTORIA - Port Phillip - Point Richards Channel - Lights altered.

List of Lights Vol K/2006 - 2242, 2242.2, 2242.4, 2242.6, 2243, 2243.2, 2243.3, 2243.4, 2243.5
Victorian Notice 25/2006 (A187791).

Aus 157 [226/2006]

Amend	light beacon No 1 to <i>F. Fl(2) G. 3s 3M</i>	38° 05'.15 S	144° 38'.48 E
	light beacon No 2 to <i>F. Fl(2) R. 3s 3M</i>	38° 05'.23 S	144° 38'.50 E
	light beacons No 3, 5 and 7 to <i>Fl. G. 3s 3M</i>	38° 05'.27 S	144° 37'.66 E
		38° 05'.44 S	144° 36'.82 E
		38° 05'.72 S	144° 35'.97 E
	light beacons No 4, 6 and 8 to <i>Fl. R. 3s 3M</i>	38° 05'.36 S	144° 37'.67 E
		38° 05'.53 S	144° 36'.82 E
		38° 05'.82 S	144° 36'.02 E
	light beacon No 7A to <i>F. Fl.G. 3s 3M</i>	38° 05'.97 S	144° 35'.44 E
	light beacon No 8A to <i>F. Fl.R. 3s 3M</i>	38° 06'.04 S	144° 35'.49 E

359 AUSTRALIA - Products - Cumulative List of Australian Notices to Mariners - April 2006.

AHS (A188654).

The Cumulative List of Australian Notices to Mariners - April 2006 is [issued as an accompanying supplement](#). It lists all permanent notices affecting charts in the Area of Australian Charting Responsibility published in the preceding two years since Edition 7 of 2004 dated 2 April 2004, and includes Edition 8 of 2006 dated 14 April 2006.

360(T)/2006 AUSTRALIA - QUEENSLAND - Brisbane River - Petrie Bight - Harbour works.*Date* - Until 28 April 2006

Maritime Safety Queensland Notice 201(T)/2006 (A188936).

Marine barge 2963Q is conducting drilling operations at the Howard Smith Wharves (27° 27'.75 S 153° 02'.20 E). Operations will be conducted Monday to Friday, between 0700 and 1730 daily.

The barge will display appropriate shapes and signals.

Mariners are advised to navigate with caution in the area.

Chart temporarily affected – Aus 238.

361(T)/2006 AUSTRALIA - QUEENSLAND - Gladstone - Light beacon destroyed; light buoy.

List of Lights Vol K/2006 - 2988.2

Maritime Safety Queensland Notice 178(T)/2006 (A181196).

Special light beacon A7 (23° 49'.51 S 151° 15'.34 E) has been destroyed; a special cylindrical light buoy, *Fl.Y.4s*, exists in situ.

Mariners are advised to navigate with caution in the area.

Chart temporarily affected – Aus 244 – Aus 245 - AU 5244X5.

362(T)/2006 AUSTRALIA - QUEENSLAND - Flat Top Island - Light unlit.

List of Lights Vol K/2006 - 3028

Maritime Safety Queensland Notice 172(T)/2006 (A187918).

The light (21° 09'.69 S 149° 14'.79 E) has been reported unlit.

Mariners are advised to navigate with caution in the area.

Chart temporarily affected – Aus 249 – Aus 370 – Aus 823 - AU422149.

363(T)/2006 AUSTRALIA - QUEENSLAND - Townsville - Ross River - Dredging operations.*Date* - Until 30 June 2006

Maritime Safety Queensland Notice 179(T)/2006 (A188201).

The dredge *Kikilu* is conducting dredging operations in the Ross River. Work is being carried out between the entrance channel and 10 Terminal.

The dredge will exhibit appropriate signals and will maintain a listening watch on VHF Ch 16 and 12.

Mariners are advised to navigate with caution in the area.

Chart temporarily affected – Aus 256 – Aus 257 - AU5XX257.

364(T)/2006 AUSTRALIA - QUEENSLAND - Townsville - Depth information.*Former Notice - 279(T)/2006 is cancelled*

Maritime Safety Queensland Notice 203(T)/2006 (A188938).

Available depths as at 27 March 2006:

	<i>Metres</i>	<i>Remarks</i>
Sea Channel	11.7	
Platypus Channel	11.7	
Outer Harbour:		
Arrival Channel	8.5	West of a line from dolphin across end of berth pocket to edge of arrival channel
* Departure Channel	11.5	
Inner Harbour:		
* Harbour	11.6	
Berths:		
* No 1	11.9	
* No 2	12.7	
* No 3	11.9	
* No 4	10.2	
* No 7	11.0	
No 8	10.3	
* No 9	12.1	
* No 10	9.2	To the seaward dolphin
No 11	12.1	
* Between No 7 and No 8	9.7	Seaward of zero mark at No 7
* Between No 9 and No 10	10.2	Seaward of zero mark at No 10
Ross River Channel	1.1	
Ross River and Ross Creek	-	No declared depth

* Indicates revised entry.

Chart temporarily affected – Aus 256 – Aus 257 - AU420146 - AU5XX257.**365(T)/2006 AUSTRALIA - QUEENSLAND - Halifax Bay - Rattlesnake Island - Live firing.***Date - Until 30 May 2006*

Maritime Safety Queensland Notice 148(T)/2006 (A186247).

Mariners are advised that military units will be conducting live firing on Tuesday 30 May 2006 between 0730 and 1300.

The active area is within a five mile radius centred on position 19° 02'.067 S 146° 36'.700 E (Rattlesnake Island).

Mariners are advised to keep clear of this area throughout the above times.

Chart temporarily affected – Aus 256 – Aus 371 – Aus 827 - AU419146 - AU420146.**366(T)/2006 AUSTRALIA - QUEENSLAND - Low Islets - Sector light trial extended.***Date - Until 30 June 2006**Former Notice - 1082(T)/2005 is cancelled*

AMSA ATH 2006/06 (A188413).

A sector light, in addition to the existing light, exists as follows:

<i>Position</i>	<i>Characteristic</i>	<i>Sector</i>
16° 23'.07 S 145° 33'.59 E	<i>Iso. 2s 20m 10M</i>	<i>Green 313° - 318° (5°)</i> <i>White 318° - 323° (5°)</i> <i>Red 323° - 328° (5°)</i>

Chart temporarily affected – Aus 373 – Aus 830 – Aus 831 - AU417145.

367(T)/2006 AUSTRALIA - QUEENSLAND - Howick Group - Scientific instruments.

Date - Until 23 May 2006

HMAS' *Paluma* & *Mermaid* (A189024).

Unmarked current meters have been established as follows:

<i>Position (WGS84 datum)</i>	<i>Remarks</i>
14° 30'.28 S 144° 59'.87 E	5.5m above seabed
14° 28'.39 S 144° 56'.22 E	2.5m above seabed.

Mariners are advised to navigate with caution in the area.

Chart temporarily affected – Aus 270 – Aus 832 – Aus 833 - AU415144.

368(T)/2006 AUSTRALIA - QUEENSLAND - Carpentaria Shoal - Light buoy off station.

Date - Until 30 November 2006

List of Lights Vol K/2006 - 3296

AMSA ATH 2006/05 (A188261).

Carpentaria Shoal light buoy is off station in position 10° 44'.91 S 141° 03'.35 E. The buoy will be replaced in position in November 2006.

Chart temporarily affected – Aus 301 – Aus 376 – Aus 700 – Aus 4720 - AU220140 - AU411141.

369(T)/2006 AUSTRALIA - QUEENSLAND - Karumba - Mooring buoy replaced in position.

Former Notice - 201(T)/2006 is cancelled

Maritime Safety Queensland Notice 180(T)/2006 (A188199).

Cancel this notice on receipt.

Chart formerly affected – Aus 6

370(P)/2006 AUSTRALIA - NORTHERN TERRITORY - Cape Don - Light to be altered.

Date - On or about 12 May 2006

List of Lights Vol K/2006 - 3314

AMSA ATH 2006/10 (A188420).

The light (11° 18'.5 S 131° 46'.0 E) will be altered to *Fl. 12s 50m 21M*

Chart which will be affected – Aus 308 – Aus 442 – Aus 720 – Aus 721 – Aus 4720 - AX 70308 – AX 70721.

371(P)/2006 WESTERN AUSTRALIA - Gantheaume Point - Light to be altered.

Date - On or about 8 June 2006

List of Lights Vol K/2006 - 1660

AMSA ATH 2006/09 (A188419).

The light (17° 58'.5 S 12° 10'.6 E) will be altered to *Fl. 10s 33m 18M*

Chart which will be affected – Aus 50 – Aus 324 – Aus 415 – Aus 4722.

372(T)/2006 SOUTH AUSTRALIA - Port Lincoln - Proper Bay - Light beacon destroyed.

List of Lights Vol K/2006 - 1881.4

DOTSA Notice 18/2006 (A188862).

The light beacon (34° 45'.13 S 135° 53'.86 E) has been destroyed.

Mariners are advised to navigate with caution in the area.

Chart temporarily affected – Aus 134.

373(P)/2006 AUSTRALIA - TASMANIA - Point Home - Light to be altered.

Date - On or about 21 April 2006
List of Lights Vol K/2006 - 3609.8
AMSA ATH 2006/08 (A188416).

The light (42° 33'.07 S 147° 57'.21 E) will be altered to *Oc. 6s 57m 12M*

Chart which will be affected – Aus 170 – Aus 355.

374(P)/2006 AUSTRALIA - TASMANIA - Cape Tourville - Light to be altered.

Date - On or about 12 April 2006
List of Lights Vol K/2006 - 3608
AMSA ATH 2006/07 (A188415).

The light (42° 07'.38 S 148° 20'.57 E (WGS84 datum)) will be altered to *Fl. 6s 126m 18M*.

Chart which will be affected – Aus 355 – Aus 422.

375(T)/2006 AUSTRALIA - VICTORIA - Port Phillip - Rip Bank to Nepean Bank - Underwater survey.

Former Notice - 69(T)/2006 is cancelled
Victorian Notice 44(T)/2006 (A188329).

Underwater diving and remote operating vehicle surveys of Rip Bank and Nepean Bank will be conducted along the Entrance Deep (38° 18'.0 S 144° 38'.0 E) walls. The surveys will commence at times of predicted slack water and continue up to one hour thereafter.

The entrance channels will be closed to shipping during periods when underwater activities take place in the Great Ship Channel.

The Eastern Ship Channel and Outer Eastern Channel will remain open to shipping when under water activities take place in the Western Ship Channel and/or Outer Western Channel. During the closure periods vessels must not pass or overtake in the Eastern Ship Channel and Outer Eastern Channel.

The Western Ship Channel and Outer Western Channel will remain open to shipping when under water activities take place in the Eastern Ship Channel and/or Outer Eastern Channel. During the closure periods vessels must not pass or overtake in the Western Ship Channel and Outer Western Channel.

Vessels intending to use any of the entrance channels should make early contact with Point Lonsdale Signal Station to obtain detailed information about the planned daily program.

Chart which will be affected – Aus 143 – Aus 144 – Aus 158.

376(T)/2006 AUSTRALIA - VICTORIA - Port Phillip - Port Melbourne Channel - Obstruction.

Victorian Notice 47(T)/2006 (A188483).

An obstruction, least depth *11.6m*, exists in position 37° 56'.156 S 144° 55'.647 E (AGD66 datum).

Chart which will be affected – Aus 155.

377(T)/2006 AUSTRALIA - VICTORIA - Port Phillip - Port Melbourne - Depth information.

Former Notice - 1133(T)/2005 is cancelled
Victorian Notice 52(T)/2006 (A188930).

Available depths as at 27 March 2006:

Berth	Metres
* Swanson Dock berth No 4E	12.5
Appleton Dock F berth	11.0
Appleton Dock B berth	10.4
Appleton Dock C berth	10.5
Station Pier Inner East	10.5
Webb Dock East No 4	12.1
Yarraville berth No 5	9.1
Yarraville berth No 6	10.1

* Indicates revised entry.

Chart temporarily affected – Aus 154.

378(P)/2006 AUSTRALIA - VICTORIA - Port Phillip - West Channel - Changes to navigation aids.

Date - On or about 3 April 2006

List of Lights Vol K/2006 - 2222.5, 2226.5

Victorian Notice 46(P)/2006 (A188484).

Navigation aids referred to in Notice to Mariners 1132(P)/2005 will be relit as follows:

Beacon	Position (WGS84 datum)	Light characteristic
No4	38° 14'.7 S 144° 43'.0 E	F(2) R. 4s 5M
No7	38° 14'.0 S 144° 43'.7 E	F(2) G. 4s 5M

Chart which will be affected – Aus 158.**379(T)/2006 AUSTRALIA - TEMPORARY AND PRELIMINARY NOTICES.**

Former Notice - 73(T)/2006 is cancelled

AHS (A179957)

Notice	Charts affected	Locality and Subject
		BASS STRAIT
		<i>Port Campbell</i>
1016/2005	Aus349	Scientific instruments southward
		CORAL SEA
		<i>Lihou Reef</i>
653/2001	Aus614	Shoals
		<i>Willis Islets</i>
150/2006	Aus617-4620-4621-AU220140	Light unlit
		NEW SOUTH WALES
		<i>Batemans Bay</i>
317/2006	Aus191	Shoaling; buoy
		<i>Brisbane Water</i>
647/2005	Aus216	Scientific instrument eastwards
		<i>Broken Bay</i>
292/2005	Aus361-423-424-809	Fish aggregating devices westward
742/2005	Aus197-204-215-AX70197	Scientific instrument northwards
		<i>Cape St George</i>
268/2006	Aus193-807-AX60193-70193	Scientific instrument eastwards
		<i>Eden to Ballina</i>
135/2006	Aus197-806-808-809-813- AX70197-70808	Light buoys
		<i>Green Cape to Lennox Head</i>
210/2005	Aus197-806-807-808-809- 810-811-812-813-AX70197- 70808	Scientific instruments
		<i>Harrington Inlet</i>
333/2004	Aus810	Obstruction
		<i>Huskisson</i>
737/2005	Aus193-AX60193-70193	Leading lights
		<i>Montague Island</i>
316/2006	Aus359-360-805-806	Light to be altered
		<i>Newcastle</i>
953/2005	Aus207-208	Depth information
		<i>Port Jackson</i>
1043/2005	Aus202-203	Light buoys
		<i>Port Kembla</i>
838/2002	Aus195	Pipeline; jetty
234/2004	Aus195	Obstructions; lights
669/2004	Aus195	Infrastructure; light buoys
738/2005	Aus195	Lights; spoil ground
739/2005	Aus195	Depth information

379(T)/2006 (Continued)

Notice	Charts affected	Locality and Subject
NORTHERN TERRITORY		
914/2005	Aus13	<i>Bing Bong</i> Dredging operations
370/2006	Aus308-442-720-721-4720- .. AX70308-70721	<i>Cape Don</i> Light to be altered
811/2003	Aus26-722	<i>Darwin</i> Wreck; light buoy
379/2004	Aus26-28	Shoaling
521/2004	Aus26-722	Wreck
1098/2004	Aus26-28	Obstruction; light buoys
534/2005	Aus28	Harbour works
669/2005	Aus28	Depth information
670/2005	Aus26-28	Shoaling
328/2006	Aus26-28-AX72026	Pipeline; pumping stations
1047/2005	Aus4720	<i>Groote Eylandt</i> Scientific instrument eastwards
950/2004	Aus309-311-315-AX70309	<i>Troubadour Shoals</i> Scientific instruments
616/2005	Aus306-442-716	<i>Warnawi Island</i> Light destroyed
QUEENSLAND		
148/2006	Aus268-AU5268P2	<i>Abel Point</i> Dredging operations
195/2006	Aus 830-AU417145	<i>Arlington Reef</i> Buoy westwards withdrawn
653/2005	Aus238	<i>Brisbane River</i> Harbour works
138/2006	Aus237-238	Depth information
139/2006	Aus237	Dredging operations
228/2006	Aus238	Light altered
269/2006	Aus237	Light buoy
270/2006	Aus238	Harbour works
360/2006	Aus238	Harbour works
271/2006	Aus242-243-AU5XX242	<i>Bundaberg</i> Depth information
322/2006	Aus242-AU5XX242	Dredging operations
256/2005	Aus826	<i>Burdekin River</i> Obstruction; buoys
391/2005	Aus264	<i>Cairns</i> Wreck; light buoy
963/2005	Aus262-263-AU5262X4	Light altered
1009/2005	Aus262-263-264-AU417145- 5262X4	Depth information
194/2006	Aus262-263-AX63262-	Dredging operations
233/2006	AU5262X4 Aus263-264-AU5262X4	Wreck; light buoy
1119/2005	Aus373-831-AU417145	<i>Cape Tribulation</i> Light beacon unlit
368/2006	Aus301-376-700-4720-	<i>Carpentaria Shoal</i> Light buoy off station
962/2005	AU220140-411141 Aus372-828-AU419146	<i>Chicken Reef and Pith Reef</i> Scientific instruments
665/2005	Aus270-AU416145-5270P6...	<i>Cooktown</i> Depth information

379(T)/2006 (Continued)

<i>Notice</i>	<i>Charts affected</i>	<i>Locality and Subject</i>
		<i>Eden Reef</i>
326/2006	Aus280-374-833-4620- AU220140-415143	Racon to be discontinued
		<i>Flat Top Island</i>
362/2006	Aus249-370-823-AU22149....	Light unlit
		<i>Gladstone</i>
188/2006	Aus246-AU5244X5	Light beacon unlit
190/2006	Aus244-245-AU5244X5	Drilling operations
275/2006	Aus246-AU424151.....	Shoaling
274/2006	Aus246-424151.....	Light beacon destroyed; light buoy
323/2006	Aus244-245-246-AU424151- 5244X5	Depth information
361/2006	Aus244-245-AU5244X5	Light beacon destroyed; light buoy
		<i>Gneering Shoal</i>
907/2005	Aus365	Wreck northwards
		<i>Gold Coast Seaway</i>
788/2005	Aus814	Shoaling
1044/2005	Aus814	Light beacon destroyed; light buoy
		<i>Great Sandy Strait</i>
214/2005	Aus241-817.....	Light buoys
		<i>Halifax Bay</i>
365/2006	Aus256-371-827-AU419146- 420146	Live firing
		<i>Hay Point</i>
1116/2005	Aus250-AU5250P2	Diving operations
143/2006	Aus250-AU5250P2	Mooring
144/2006	Aus249-250-AU422149- 5250P2	Geotechnical investigations
230/2006	Aus249-250-AU5250P2	Harbour works
325/2006	Aus249-250-AU422149- 5250P2	Depth information
		<i>Heron Island</i>
389/2005	Aus366-426-819	Scientific instruments
		<i>Howick Group</i>
367/2006	Aus270-832-833-AU415144..	Scientific instruments
		<i>Karumba</i>
533/2005	Aus6	Light buoy
709/2005	Aus6	Depth information
67/2006	Aus6	Light altered
327/2006	Aus6	Light beacon destroyed
		<i>Keppel Bay</i>
191/2006	Aus247-AU424150.....	Wreck
		<i>Keppel Isles</i>
276/2006	Aus366-367-AU424151	Wreck eastwards
		<i>Lads Passage</i>
65/2006	Aus281-AU414143.....	Scientific instrument westwards
		<i>Laguna Quays</i>
703/2005	Aus252-AU421148-5252P1...	Reduced depth; dredging operations suspended
		<i>Low Islets</i>
366/2006	Aus373-830-831-AU417145..	Sector light trial extended
		<i>Mackay</i>
146/2006	Aus250-AU5250P1	Depth information
147/2006	Aus249-250-AU5250P1	Harbour works

379(T)/2006 (Continued)

<i>Notice</i>	<i>Charts affected</i>	<i>Locality and Subject</i>
		<i>Mooloolaba</i>
1114/2005	Aus235	Harbour works
320/2006	Aus235	Harbour works
		<i>Moreton Bay</i>
706/2004	Aus235-236.....	Light
213/2005	Aus236	Harbour works
294/2005	Aus236	Obstruction marked by sign
566/2005	Aus236	Obstruction marked by sign
652/2005	Aus236	Light beacon destroyed; light buoy
744/2005	Aus237	Light buoy withdrawn; light beacon
957/2005	Aus236	Obstruction marked by light buoy
60/2006	Aus235-236-237	Dredging operations
91/2006	Aus236	Least depth
179/2006	Aus236	Harbour works
		<i>Moreton Bay and Brisbane River</i>
137/2006	Aus235-236-237-238-814	Depth information and keel clearances
		<i>Mourilyan</i>
282/2006	Aus258-AU5258P1	Depth information
		<i>Orpheus Island</i>
572/2005	Aus827-828-AU419146	Radio mast
		<i>Point Danger to Weipa</i>
136/2006	Aus4-236-247-249-250-251- 256-365-813-814-AU320147- 413141-417145-422149- 424151-5250P2	Scientific instruments
		<i>Port Alma</i>
337/2005	Aus247	Depth information
834/2005	Aus247	Leading light; light buoys
		<i>Port Douglas</i>
392/2005	Aus 830-AU417145.....	Topmark destroyed
664/2005	Aus270-AU5270P1	Depth information
		<i>Red Island</i>
778/2002	Aus294	Stranded wreck
		<i>Red Island Point</i>
853/2003	Aus294	Shoaling
		<i>Roslyn Bay</i>
1115/2005	Aus247-AU5247P2	Shoaling
		<i>Shoalwater Bay</i>
277/2006	Aus260-367-822-AX60260-... AU423150	Marine danger area eastwards
		<i>Shute Harbour</i>
192/2006	Aus253-AU5253P1	Harbour works
		<i>Thursday Island</i>
687/2001	Aus293-299.....	Depth information
198/2006	Aus293-299-AU5XX299.....	Light buoy off station
		<i>Townsville</i>
280/2006	Aus256-257-AU420146-..... 5XX257	Light buoys established; light altered
281/2006	Aus256-257-AU5XX257	Wreck
363/2006	Aus256-257-AU5XX257	Dredging operations
364/2006	Aus256-257-AU420146-..... 5XX257	Depth information
		<i>Weipa</i>
178/2005	Aus4	Light beacon destroyed; light buoy
1011/2005	Aus4-AU413141-5XX4P1.....	Depth information

379(T)/2006 (Continued)

Notice	Charts affected	Locality and Subject
SOUTH AUSTRALIA		
<i>Adelaide</i>		
1124/2005	Aus137	Bridge construction; exclusion zone; temporary light buoys
153/2006	Aus137-781	Light beacons to be established; light beacons to be altered and renumbered
<i>Glenselg</i>		
490/2002	Aus125-781	Restricted areas; light buoys
<i>Margaret Brock Reef</i>		
452/2002	Aus127	Structure
<i>Port Adelaide</i>		
237/2006	Aus137-780-781	Dredging
239/2006	Aus137	Depth information
240/2006	Aus137	Shoaling
<i>Port Lincoln</i>		
372/2006	Aus134	Light beacon destroyed
<i>Port Vincent</i>		
1013/2005	Aus780-781	Yachting buoys
<i>Smoky Bay</i>		
721/2004	Aus120	Breakwater; lights
<i>St Peter Island</i>		
289/2006	Aus120	Buoy off station
<i>Stansbury</i>		
1012/2005	Aus780-781	Beacon destroyed
<i>Wallaroo</i>		
90/2004	Aus777	Depths
<i>Yarraville Shoal</i>		
815/2002	Aus344-444-778	Light beacon destroyed; light buoy
TASMANIA		
<i>Burnie</i>		
1019/2005	Aus163	Depth information
<i>Cape Tourville</i>		
374/2006	Aus355-422	Light to be altered
<i>D'Entrecasteaux Channel</i>		
905/2004	Aus173	Spat collection; light buoys
<i>Devonport</i>		
310/2004	Aus164	Depth information
<i>Furneaux Group</i>		
922/2005	Aus179-800	Shoaling
<i>Hobart</i>		
1126/2005	Aus172	Depth information
154/2006	Aus171-172-795	Harbour works
<i>Huon River</i>		
89/2003	Aus173	Wreck; buoy
<i>Macquarie Harbour</i>		
206/2006	Aus177	Mooring
<i>Marion Narrows</i>		
1129/2005	Aus169	Beacon destroyed
<i>Norfolk Bay</i>		
906/2004	Aus171	Spat collection; light buoys

379(T)/2006 (Continued)

<i>Notice</i>	<i>Charts affected</i>	<i>Locality and Subject</i>
373/2006	Aus170-355.....	<i>Point Home</i> Light to be altered
270/2005	Aus176.....	<i>Port Davey</i> Horizontal datum anomaly
1020/2005	Aus178.....	<i>Smithton</i> Light destroyed
264/2002	Aus170.....	<i>Spring Bay</i> Depth information
844/2005 292/2006	Aus168-AU5167X8 Aus168.....	<i>Tamar River</i> Reduced clearance Dredging operations
TIMOR SEA		
1085/2005	Aus26-28-29-308-309-311-... 312-315-316-722-4721- AX70308-70309-70722- 72026-72309-72722-	<i>Darwin to Sahul Banks</i> Survey operations
840/2005	Aus312.....	<i>Sahul Banks</i> Scientific instrument
TORRES STRAIT		
235/2006	Aus292-293-296-700- AU411141-499142	<i>Goods Island to Proudfoot Shoal</i> Scientific instruments
1083/2005	Aus293-299-AU5XX299.....	<i>Thursday Island</i> Front lead temporarily reinstated
470/2005 197/2006	Aus376-377-837-AU411143.. Aus376.....	<i>Yule Entrance</i> Shoal southwestwards Scientific instruments
VICTORIA		
340/2006	Aus141.....	<i>Apollo Bay</i> Harbour works not completed
1002/2004	Aus181-182.....	<i>Barry Beach</i> Shoaling
673/2005	Aus150-349-422-487-788-801	<i>Cape Schanck</i> DGPS range reduced
957/2004	Aus143-144-158.....	<i>Port Phillip</i> Shoal
964/2004	Aus143-158.....	Prohibited area; special buoy
966/2004	Aus144-158.....	Beacon destroyed; buoy
271/2005	Aus157.....	Depth information; shoal
400/2005	Aus155.....	Shoaling
623/2005	Aus143-158.....	Harbour works
1090/2005	Aus143-157.....	Light beacon; light buoy
1132/2005	Aus143-144-157-158.....	Changes to navigation aids
157/2006	Aus143-154-155-158.....	Transit only zone to be established
209/2006	Aus154-155.....	Harbour works; light buoy
242/2006	Aus154.....	Harbour works
245/2006	Aus143-155.....	Shoaling
341/2006	Aus143-154-155-158.....	Geotechnical investigations
342/2006	Aus158.....	Light buoys damaged; buoys
351/2005	Aus143-144-158.....	Shoaling
375/2006	Aus143-144-158.....	Underwater survey
376/2006	Aus155.....	Obstruction
377/2006	Aus154.....	Depth information
378/2006	Aus158.....	Changes to navigation aids
72/2006	Aus181-182.....	<i>Port Welshpool</i> Beacon destroyed

379(T)/2006 (Continued)

<i>Notice</i>	<i>Charts affected</i>	<i>Locality and Subject</i>
		<i>Western Port</i>
610/2004	Aus150	Beacon destroyed; buoy
228/2005	Aus150-151	Beacon destroyed
229/2005	Aus150-151	Beacon destroyed
979/2005	Aus150-151	Harbour works
246/2006	Aus150-151	Shoaling
		WESTERN AUSTRALIA
		<i>Barrow Island</i>
441/2005	Aus62-742	Scientific instrument eastwards
1088/2005	Aus328-415-416	Scientific instruments northwestward
		<i>Broome</i>
971/2005	Aus50	Harbour works
		<i>Cape Leveque</i>
329/2006	Aus323-415-733-4722	Racon to be discontinued
		<i>Cockburn Sound</i>
1089/2005	Aus111	Obstruction
		<i>Dampier</i>
438/2005	Aus58-59	Light temporarily discontinued
439/2005	Aus57-58-59	Harbour works
204/2006	Aus58-59	Dredging operations
331/2006	Aus57-58-59-327-741	Underwater blasting operations
332/2006	Aus57-58-59	Drilling operations
		<i>Dampier Archipelago</i>
523/2004	Aus327-415	Scientific instruments northwestwards
		<i>Direction Bank</i>
919/2005	Aus334-754	Scientific trials westward
		<i>East Island to Red Bluff</i>
330/2006	Aus323-324-415-4722	Racons to be discontinued
		<i>Esperance</i>
857/2004	Aus119	Light buoy
		<i>Fremantle</i>
644/2004	Aus113	Depth information
474/2005	Aus112-113-AX63112	Obstruction; submarine cable; light buoy
		<i>Gantheaume Point</i>
371/2006	Aus50-324-415-4722	Light to be altered
		<i>Garden Island</i>
336/2006	Aus111-117-AX70117	Light unlit
		<i>Geraldton</i>
313/2005	Aus81	Fish farm removed
		<i>Glomar Shoal</i>
1048/2005	Aus327-741	Scientific instruments northwards and eastwards
		<i>Hillarys Boat Harbour</i>
206/2004	Aus754	Buoy
		<i>King George Sound</i>
314/2005	Aus110-118	Scientific instrument southward
		<i>Kwinanna</i>
757/2005	Aus114-117-AX70117	Harbour works; buoys; pipeline
		<i>Mandurah</i>
103/2006	Aus116-755	Light beacon to be established; light buoy
		<i>Montebello Islands</i>
100/2006	Aus328	Scientific instruments northwestward

379(T)/2006 (Continued)

Notice	Charts affected	Locality and Subject
		<i>North West Cape</i>
918/2005	Aus328-329-744	Scientific instruments northward
102/2006	Aus328-329-744	Drilling operations and wellheads northwestward
		<i>Onslow</i>
335/2006	Aus64-743.....	Scientific instruments westward
		<i>Port Hedland</i>
83/2004	Aus53-739-740	Light beacon damaged
151/2006	Aus52-53-326-415-739-740- 4722	Light beacons to be altered
		<i>Rosemary Island northwards</i>
152/2006	Aus327-742.....	Pipe laying operations northwards
		EAST TIMOR
		<i>Dili</i>
752/2005	Aus901	Nav aids
		<i>Pulau Jaco</i>
309/2005	Aus311-312-313-4721.....	Light unlit
		INDIAN OCEAN
		<i>Cocos Islands</i>
800/2005	Aus607	Light beacon
		INDONESIA
		<i>Timor</i>
1087/2005	Aus321-4721-4722	Light unlit
		PAPUA NEW GUINEA
809/2003	Lights
		<i>Bougainville Island</i>
893/2004	Aus399-461-683-684-4060-.. 4604-4622	Lights destroyed
		<i>Bristow Island</i>
430/2005	Aus376-377-378-840-4620-.. 4720-AU210140	Light unlit
		<i>Cape Nelson</i>
341/2005	Aus384-519-520	Lights unlit
283/2006	Aus384-519-520	Light beacon positional inaccuracy
		<i>Cape Nelson to Cape Ward Hunt</i>
435/2005	Aus384-520-521-4620-4622- AU210140	Lights unlit
		<i>Kwato Eina Kaba Kwasi Shoal</i>
588/2001	Aus625	Beacon destroyed
		<i>Lae</i>
964/2005	Aus523-4622.....	Light unlit
		<i>Madang</i>
967/2005	Aus646	Horizontal datum anomaly
		<i>Manus Island</i>
895/2004	Aus462-576-662-4604-4622 .	Lights destroyed
		<i>New Britain</i>
115/2002	Aus674	Light beacons unlit
578/2005	Aus397-461-680-4622	Light beacons unlit
579/2005	Aus395-461-547-4622	Light beacons unlit
580/2005	Aus395-547-4622	Light unlit
965/2005	Aus547	Light beacons unlit
284/2006	Aus397-461-680	Light beacons destroyed
		<i>New Ireland</i>
966/2005	Aus666-667.....	Light beacons destroyed

379(T)/2006 (Continued)

<i>Notice</i>	<i>Charts affected</i>	<i>Locality and Subject</i>
892/2004	Aus386-523-4603-4604-4622	<i>Nussing Island to Fortification Point</i> Lights unlit
432/2005	Aus379-380-505-4620- AU210140	<i>Port Moresby</i> Fish aggregation device southwards
431/2005	Aus379-505-620-621-4620- .. AU210140	<i>Redscar Bay to Port Moresby</i> Lights unlit
434/2005	Aus380-506-4620-4621- AU220140	<i>Rothery Passage</i> Light beacon destroyed
436/2005	Aus523-644-4620-4622- AU210140	<i>Salamaua Harbour</i> Light unlit
83/2003	Aus651	<i>Wewak Harbour</i> Lights unlit
285/2006	Aus399-462-4604-4622	Scientific instruments northeastwards

II

AMENDMENTS TO ADMIRALTY LIST OF LIGHT AND FOG SIGNALS VOLUME K 2006/07

Edition No 8 dated 14 April 2006

Last Amendment: Edition No 7 dated 31 March 2006

0893	Lampuyang	3 49-62 102 16-67	Fl WR 2s	17	12	White GRP beacon 10 *	W 060°-033°(333°), R 033°-060°(27°) *
0927	Tg Tua	5 54-4 105 43-0	Fl(3) W 10s	50	12	White metal framework tower 15	(fl 0.5, ec 1.5) x 2, fl 0.5, ec 5.5 *
0929-5	Pulau Mundu	5 40-78 105 50-20	Fl W 6s	23	16	White beacon	fl 0.35 *
0943-2	--	2 55-5 104 54-0	Fl R 5s	14	6	White metal framework tower on concrete tower 11	fl 0.5 *
1009	Tg Bunga	2 07-83 106 10-73	Fl W 5s	30	8	White beacon 20	fl 0.5 *
1020	Pulau Simedang, Centre	3 19-0 107 13-0	Fl(4) W 25s	61	20	White metal tower 57	 *
1020-5	Karang Batu Malang	3 14-91 107 28-17	Fl W 5s	13	12	White beacon 10	fl 1. Ra refl *
1045	Gosong-Gosong Serdang	5 04-5 106 16-6	Fl(2) W 10s	12	13	Black \odot on black beacon, red band 10	fl 0.5, ec 2, fl 0.5, ec 7 *
1061	Gosong Dapur	5 55-45 106 43-58	Fl(2) W 8s	15	10	White metal beacon	 *
1076-5	-	6 05-69 106 52-66	Fl R 5s	8	5	Red beacon	fl 0.5 *
1294-5	- Tanjung Agaragar	8 12-5 116 22-0	Fl W 5.5s	35	18	White light beacon	fl 1 *
1334-5	- Gosong Unjuran	8 28-67 122 08-67	Fl G 5s	15	12	Green beacon	fl 0.5. Ra refl *
1359	- Teluk Karobafo	10 36-37 123 14-06	Fl W 3s	15	12	White beacon	 *
*	*	*	*	*	*	*	*
1407	Pulau-Pulau Leman. Pulau Lemanbudi	1 16-33 108 52-42	Fl(2) W 8s	48	15	White metal framework tower 15	Ra refl *

II

Volume K *continued*

1410-1	Selat Karimata. Gosong Mampango	3 00-0 109 22-5	Fl(2) W 5s	...	5	Black \odot on black beacon, red band	<i>fl 0-5, ec 1, fl 0-5, ec 3</i>
*	*	*	*	*	*	*	*
1426-5	Pulau Kelambau (Kalambau)	4 56-08 115 38-00	Fl W 5s	15	12	White beacon	<i>fl 0-5. Ra refl</i>
			*				*
1434	- Suwangi. S end	3 27-12 116 01-43	Fl W 3s	18	13	Beacon	<i>fl 0-5</i>
			*				*
1435	- Batulicin	3 26-97 116 00-50	Fl W 6s	22	12	White metal framework tower	<i>fl 0-5</i>
		*			20		*
1454	Gosong Aru	2 15-3 116 39-9	Fl(3) W 10s	13	12	\diamond on black framework tower, yellow bands, on piles	Ra refl
			*				*
1482-5	- Loliodi. (Donggala)	0 46-93 119 47-98	Iso W 8s	12	10	White beacon	
	*	*	*	*	*	*	
1511	- Pu Samalona	5 07-5 119 20-3	Fl(2) W 5s	15	9	White beacon	<i>fl 0-5, ec 1-5, fl 0-5, ec 2-5. Ra refl</i>
			*				
1514	-- S side (Lae-lae)	5 07-23 119 23-57	Fl G 3s	12	8	Green framework tower on piles	<i>fl 0-3. On request</i>
				*	*		
1519	- E	5 29-60 119 19-13	Fl W 5s	15	9	...	<i>fl 0-5</i>
							*
1548-6	-- Lambasina Kecil	4 04-75 121 19-50	Fl(2) W 8s	60	15	30	
							*
1558-2	- Teluk Wanji. Pulau Tengah	5 21-25 123 32-00	Fl W 3s	Beacon	<i>fl 0-5</i>
							*
1566-4	-- Tg Tumbuk	0 57-0 122 47-6	Fl W 3s	12	2		
			*	*	*		*
1573-5	- Pasir Laut	0 46-50 120 54-92	Fl(2) W 10s	12	12	White beacon	<i>fl 0-5, ec 1-5, fl 0-5, ec 7-5</i>
*	*	*	*	*	*	*	*
1625	Pulau Suanggi	4 19-50 129 42-25	Fl(3) W 15s	122	25	White beacon 15	<i>(fl 0-5, ec 1-5) x 2, fl 0-5, ec 10-5</i>
							*
1691-97	- Flying Fish Cove	10 25-82 105 40-14	Oc Bu 3s				
	--	...	FWR				
*	*	*	*	*	*	*	*

Volume K *continued*

1691-972	-- Boat Jetty	10 25-76 105 40-17	Q(4) W 6s					
	---	...	FR					
*	*	*	*	*	*	*	*	*
2074-2	-	34 48-56 138 31-07	FG					
*	*	*	*	*	*	*	*	*
2074-25	-	34 48-60 138 31-17	FG					
*	*	*	*	*	*	*	*	*
2074-3	-	34 48-62 138 31-21	FG					
*	*	*	*	*	*	*	*	*
2074-35	-	34 48-67 138 31-26	FG					
*	*	*	*	*	*	*	*	*
2075-72	-	34 50-48 138 30-20	FG					
*	*	*	*	*	*	*	*	*
2075-725	-	34 50-48 138 30-17	FG					
*	*	*	*	*	*	*	*	*
2172	Cape Otway. SW end (COM)	38 51-4 143 30-7	Fl WR 10s	73	W19 R 15	White GRP hut 2	W 257°-109°(212°), R 109°-shore	
			*					*
2357-6	--- No 84	37 51-0 144 54-5	Fl R 5s	Red beacon		
	----	...	FR	Same structure Neon		*
2492-5	East Moncoeur Island (COM)	39 13-71 146 32-36	Fl W 2-5s	102	16	White GRP hut 2	<i>fl 0-5</i>	
	*	*			*			
2573-4	- East Boyd Bay. Turning Basin	37 06-37 149 55-19	Fl Y 5s	5	5	Yellow X on beacon		
*	*	*	*	*	*	*		*
2573-45	---	37 06-44 149 55-18	Fl G 3s	5	5	Green △ on beacon		
*	*	*	*	*	*	*		*
2573-5	---	37 06-47 149 55-32	Fl G 3s	5	5	Green △ on beacon		
*	*	*	*	*	*	*		*
2573-55	-- Wharf. Corner	37 06-45 149 55-34	F Bu	5	2			
*	*	*	*	*	*	*		*

II

Volume K *continued*

2872-7	- Ldg Lts 216°34'. No 11F. Front	27 26-66 153 06-51	F Bu	White △, red border	Dir F WRG; F G 206-8°-213-4°(6-6°), AI WG 213-4°-216°(2-6°), F W 216°-217-2°(1-2°), AI WR 217-2°-219-8°(2-6°), F R 219-8°-226-4°(6-6°). (T) 2006. On all sequences
	----		... Q Bu	Same structure	
	----		... <i>By day</i> F Y				
		*					*
2872-71	-- No 11R. Rear. 200m from front	27 26-75 153 06-44	F Bu	Red V	TE 2006
	----		... Iso Bu 2s	Same structure	TE 2006
	----		... <i>By day</i> F Y	TE 2006
		*					*
2910-65	-	26 41-33 153 07-73	Q G	△ on beacon	
	* *	* *		*	*	*	*
2910-68	-	26 41-33 153 07-59	Q G	△ on beacon	
	* *	* *		*	*	*	*
3090-1	-	19 18-26 147 37-23	Fl(2) W 5s	Black ∅ on black buoy, red band	
							*
3300-4	- No 14	12 40-42 141 48-31	Fl R 4s	Red □ on beacon	TE 2006
							*
3340-5	- Ujung Komoran	8 23-58 138 59-00	Fl R 4s	12	10	Red metal framework tower	<i>fl 0-5. TE 2006</i>
		*					*
3347-6	Paulau Ekka	2 58-52 132 05-60	Fl(2) W 10s	50	20	White beacon	
	* *	* *		*	*	*	*
3393-7	- Tg Rainbawi	1 47-5 136 54-2	Fl W 3s 750	26	12	White ◇ on white metal framework tower 20	<i>fl 0-3. Vis 165°-055°(250°)</i>
						*	*
3395-6	- Nabire (Jaunan)	3 06-33 135 32-67	Fl W 5s	20	12	White metal framework tower 10	<i>fl 0-5</i>
							*
3594	Barretts' Point	41 13-23 146 55-29	Fl R 3s	...	3	Beacon	TE 2006
							*
3832	- Onetaunga Bay. Kauri Pt Armament Depot. Dolphin	36 49-43 174 41-84	F G	3	2	White tower on metal pile 3	
	* *	* *		*	*	*	*
4799-95	Îlot Tareti	22 23-4 166 37-8	Q W	7	2	White beacon	
							*
4969-66	- W Channel	16 43-91 151 02-32	Fl R 2-5s	3	3	Red □ on red beacon 7	<i>fl 0-5</i>
							*

III

NAVIGATION WARNINGS

The following radio messages have been received during the period to 31 March 2006. Signal copies of these messages may be destroyed. It is recommended that the reprint of Navigational Warnings should be kept in a file or a book divided into areas. Cancellation should be made on receipt of signals and reprints.

Rigs on location other than those listed in the latest Section III summary are the subject of Radio Navigational Warnings. Rigs in transit will not be the subject of Warnings.

AUSCOAST WARNING

- 069 Cancelled.
- 070 Cancelled.
- 071 Cancelled.
- 072 Cancelled.
- 073 Cancelled.
- 074 Cancelled.
- 075 NW Coast. Drill rig *Ensco 106* in position 20° 40'.1 S 115° 30'.8 E. 2.5M clearance requested.
- 076 NW Coast. Drill rig *Atwood Eagle* in position 20° 45'.5 S 113° 25'.2 E. 2.5M clearance requested.
- 077 Cancelled.
- 078 NW Coast. Seismic SV *Western Trident* towing 2.5M cable in area 20° 10' S to 20° 50' S and 114° 30' E to 115° 00' E. 5M clearance requested.
- 079 NW Coast. Wellhead riser column in position 21° 28'.9 S 114° 00'.5 E. Column protrudes 6m above seafloor and is marked by a light Q. 3M.
- 080 SE Coast. ROV Support Vessel *Geosea* conducting underwater operations in between 38° 35' S 147° 04' E and 39° 12' S 146° 55' E.
- 081 Cancelled.
- 082 Cancelled.
- 083 Cancelled.
- 084 Cancelled.
- 085 NW Coast. North West Cape light K1710 (21° 48'.4 S 114° 09'.7 E) unlit.

NAVAREA X WARNINGS

Nil issued.

Navigational warnings in force as at 300001UTC MAR 06.

Auscoast

051 054 056 058 060 066 075 076 078 079 080 085.

Navarea X

001.

Summary of mobile drilling rigs as at 300001UTC MAR 06.

Name	Position
Stena Clyde	12° 22'.8 S 124° 16'.5 E
Ocean Bounty	12° 32'.5 S 124° 26'.6 E
Sedco 703	19° 41'.8 S 115° 53'.2 E
Atwood Eagle	20° 45'.5 S 113° 25'.2 E
Ensco 106	20° 40'.1 S 115° 30'.8 E
Jack Bates	21° 30'.1 S 113° 57'.9 E
Ensco 67	29° 27'.0 S 114° 52'.2 E
Maersk Guardian	39° 14'.2 S 142° 54'.1 E
Ocean Patriot	38° 17'.6 S 148° 42'.2 E

NAVAREA X WARNINGS

- 006 South Pacific. Volcanic activity reported Raoul Island 29° 16' S 177° 56' W.
- 007 Cancelled.

Navarea XIV warnings in force as at 300001UTC MAR 06.

2005 066 070.
2006 006

HYDROGRAPHIC REPORTS

Locality	Report	Ship/Authority	Observer
INDONESIA-- Irian Jaya	Buoy	<i>MV Pacific Voyager</i>	
ANTARTICA-- Mawson Coast	Depths; rock	<i>RSV Aurora Australis</i>	

AMENDMENTS TO ADMIRALTY LIST OF RADIO SIGNALS 2006

Edition No 8 dated 14 April 2006

VOLUME 1, PART 2, NP 281(2), 2005/06

Published BA Wk 26/05

(Last Amendments: Edition No 7 dated 31 March 2006)

MARITIME RADIO STATIONS

Page 104, **CHILE, VALPARAÍSO PLAYA ANCHA (CBV) [1860] (MRSC) (COBREM VALP)**, Radiotelex [1860] [007251860] table, delete and replace by:

Radiotelex [1860]

Public Correspondence			
	16814-5 (Ch 1616)	16691	H24
	22380-5 (Ch 2209)	22288-5	
NOTE: Both channels operate OPR+ command only			

(former amendment Ad27/05)
Chilean Notice 64/03/06 Ad12/06

POLLUTION REPORTS BY RADIO

Page 272, after **NEW ZEALAND**, insert new entry:

UNITED STATES OF AMERICA

Any person in charge of a vessel, shall, as soon as they have knowledge of any discharge of oil or a hazardous substance from such vessel, immediately notify the National Response Center (NRC) which operates H24.

Toll free telephone number: +1 800-424-8802

For those without toll free (800) access, telephone: +1(1)202 2672675

National Response Center (NRC),
U.S. Coast Guard,
2100 2nd Street, SW.,
Washington, DC 20593-0001,
United States of America

If immediate reporting to the NRC is not practicable, immediate reports may be made to the nearest U.S. Coast Guard facility, provided that the person in charge of the vessel notifies the NRC as soon as possible.

NRC Washington Ad12/06

VOLUME 2, NP 282, 2006/07

Published BA Wk 7/06

*(Last Amendments: Edition No 7 dated 31 March 2006)***RADAR BEACONS***Page 62, **NIGERIA** section, delete entry:***73075 Yoho Terminal, Falcon FPSO**

Capt Reid, Mooring Master FPSO Falcon Ad12/06

*Page 70, **QATAR** section, insert:***Mesaieed East Channel, Racon****Lt Buoy 15**(3 & 10 cm) 360° 6 n miles **Q**

Capt C Ferlan, Port Co-ordinator, Mesaieed Ad13/06

*Page 79, **TAIWAN** section, insert:***Su-ao Kang Racon¹**(3 & 10 cm) 360° 15 n miles **G**
(1) Located 20° 0-1 cables from Lt

Taiwanese Chart 0351A Ad13/06

*Page 84, **CHINA** section, insert:***Nanjishan Liedao, Racon**
Shangmaanshan Lt27°27'·09N 120°57'·90E **81621****Z**

Chinese Notice 7/92/06 Ad12/06

LEGAL TIME*Page 220, **Tunisia**, delete entry and replace by:*

Tunisia	-01	-02	Last Sun in March	Sat before last Sun in Oct
----------------	-----	-----	-------------------	----------------------------

OAG Worldwide Ltd Ad13/06

VOLUME 3, PART 2, NP 283(2), 2005/06

Published BA Wk 11/05

(Last Amendments: Edition No 7 dated 31 March 2006)

**THE 2006/07 EDITION OF THIS VOLUME HAS NOW BEEN PUBLISHED
THE 2005/06 EDITION IS CANCELLED**

VOLUME 3, PART 2, NP 283(2), 2006/07

Published BA Wk 13/06

*Notices accrued while this volume was in the press from BA Week 1/06 to BA Week 13/06, are herewith re-issued along with new information**Page iii, **DIRECTIONS FOR UPDATING THIS VOLUME****Below,***RECORD OF AMENDMENTS**

Weekly Notices to Mariners (Section VI)

*Insert:***This edition was published in BA Week 13/06. The first Weekly Notice to Mariners was issued in BA week 13/06.**

UKHO Ad13/06

(14 April 2006)

MARITIME SAFETY INFORMATION

Page 3, **NAVAREA CO-ORDINATORS, NAVAREA III (Spain)**, delete E-mail: to WARNINGS) and replace by:

E-mail: avisosihm@fm.mde.es

Spanish Hydrographic Office Ad13/06

Page 4, **NAVAREA IV and XII (United States)**, delete section and replace by:

NAVAREA IV and XII (United States)

West Atlantic (North of 7°00'N), North Pacific (East of 180°)

National Geospatial-Intelligence Agency (NGA)

Attn: PVMM (Mail Stop D-44)

4600 Sangamore Rd, Bethesda, MD 20816-5003, USA

Telephone: +1 301 2273147

Fax: +1 301 2273731

Telex: +230 898334 NGA USA

Easylink: MBS 62554950

Telegram: NGA NAVSAFETY BETHESDA MD

E-mail: navsafety@nga.mil

Website: www.nga.mil/maritime

NGA & US Notice 9/06 Ad13/06

Page 4, **NAVAREA XIV (New Zealand)**, delete section and replace by:

NAVAREA XIV (New Zealand)

South Pacific (West of 120°W)

Land Information New Zealand

LINZ Hydrographic Services

PO Box 5501

Wellington

New Zealand

Telephone: 0800 665463 or +64 (0)4 4600110

Fax: +64 (0)4 4600161

E-mail: info@linz.govt.nz

Website: www.linz.govt.nz

Navarea XIV Co-ordinator Ad13/06

SAFETYNET

Page 20, **EGC SAFETYNET SYSTEM**, Transmission schedule for full GMDSS service table, delete **NAV/MET AREA IV** entry and replace by:

IV	USA	1000, 2200 (1200 Ice reports N Atlantic)	USA	0430, 1030, 1630, 2230	AOR-W
----	-----	---	-----	------------------------	-------

USGC Ad13/06

Page 25, diagram, **SafetyNET, METAREA X-POR & IOR, AUSTRALIA, COASTAL WATERS BULLETINS** table, row 5, delete broadcast times 0400 1600 AWST and 2000 0800 and replace by: 0430 1630 AWST and 2030 0830

Bureau of Meteorology, Australia Ad13/06

RADIO WEATHER SERVICES AND NAVIGATIONAL WARNINGS

Page 88, **AUSTRALIA, BROOME (BUREAU OF METEOROLOGY OFFICE)**, delete broadcast times 0640 1710 WST and replace by:

0615 1215 1615 WST

Bureau of Meteorology, Australia Ad13/06

Page 92, **CARNARVON (BUREAU OF METEOROLOGY OFFICE)**, delete broadcast times 0545 0745 1215 1615 WST and replace by:

0605 1205 1605 WST

Bureau of Meteorology, Australia Ad13/06

Page 92, **ESPERANCE (BUREAU OF METEOROLOGY OFFICE)**, delete broadcast times 0635 1235 1635 WST and replace by:

0615 1215 1615 WST

Bureau of Meteorology, Australia Ad13/06

Page 92, **GERALDTON (BUREAU OF METEOROLOGY OFFICE)**, delete broadcast times 0615 0815 1215 1715 WST and replace by:

0615 1215 1615 WST

Bureau of Meteorology, Australia Ad13/06

Page 153, **CUBA, CIENFUEGOS** delete station

Cuban Notices to Mariners 11/89/2005 Ad13/06

Page 154, **HABANA** delete station and replace by:

HABANA		23°10'N 82°19'W	
	2760	RT (MF)	
Navigational Warnings			
0205 1405	Navigational warnings in Spanish.		
0605 1805	Artillery firing exercise warnings in Spanish.		
NOTE: After prior announcement on 2182 kHz.			

Cuban Notices to Mariners 11/89/2005 Ad13/06

Page 154, **SANTIAGO DE CUBA** delete station

Cuban Notices to Mariners 11/89/2005 Ad13/06

Page 156, **FIJI, COMMUNICATIONS FIJI**, delete station and replace by:

COMMUNICATIONS FIJI LTD			
Legend FM			
A	106.4 MHz	FM	Lautoka / Rakiraki / Labasa / Levuka / Nadi
	106.8 MHz		Suva / Nausori / Navua
	107.2 MHz		Sigatoka / Ba / Savusavu
Radio Sargam			
B	104.2 MHz	FM	Lautoka / Rakiraki / Labasa / Levuka / Nadi
	104.6 MHz		Suva / Nausori / Navua
	105.6 MHz		Sigatoka
	105.8 MHz		Ba / Savusavu
Viti FM			
C	99.6 MHz	FM	Lautoka / Rakiraki / Labasa / Levuka / Nadi
	102.8 MHz		Suva / Nausori / Navua
	103.8 MHz		Ba / Sigatoka / Savusavu
Weather Bulletins			
A-C: On receipt Repeated as necessary	Cyclone and storm warnings including the possible development of cyclones, for the waters around Fiji. Normal broadcasts in English on A , Hindi on B and Fijian on C . During a cyclone alert for Fiji continuous broadcasts from all stations until the alert passes.		
A: Mon-Fri: Every H+00 (0600-1900) Sat-Sun: 0800 0900 1000 1200 1300 1700 1800 LT	Weather forecast including wind strength, sea swell and possible storm / cyclone warnings (if in force) for coastal waters of Fiji. In English on A , Hindi on B and Fijian on C .		
B: Mon-Fri: Every H+00 (0500-1900) Sat-Sun: 0600 0700 0800 0900 1000 1200 1300 1700 1800 LT			
C: Mon-Fri: Every H+00 (0600-1900) Sat-Sun: 0800 0900 1000 1200 1300 1500 1800 LT			

Fiji Nautical Almanac 2006 Ad13/06

FIJI BROADCASTING CORPORATION LTD (FBCL)			
Radio Fiji 1			
A	558	AM	Eastern Viti Levu
	639		Western Viti Levu
	684		Vanua Levu
	927		Southern Viti Levu
	1152		Northern Viti Levu
	92.2 MHz	FM	Tavua, Outer Ba & Parts of Rakiraki
	107.6 MHz		Suva, Nausori & Navua
Radio Fiji 2			
B	774	AM	Eastern Viti Levu
	810		Vanua Levu
	1467		Northern Viti Levu
	89.8 MHz	FM	Tavua, Outer Ba & Parts of Rakiraki
	105 MHz		Sigatoka & Parts of Coral Coast
	105.2 MHz		Suva, Nausori & Navua
	105.4 MHz		Nadi & Lautoka
		Labasa	
Radio Fiji Gold			
C	94.6 MHz	FM	Tavua, Outer Ba & Parts of Rakiraki
	100 MHz		Nadi & Lautoka
	100.4 MHz		Labasa
	100.6 MHz		Suva, Nausori & Navua
		Sigatoka & Parts of Coral Coast	
		Taveuni	
Weather Bulletins			
A-C: On receipt Repeated as necessary	Cyclone and Storm Warnings including the possible development of cyclones, for the waters around Fiji. Normal broadcasts in Fijian on A , Hindi on B and English on C . During a cyclone alert for Fiji continuous broadcasts from all stations in English until the alert passes.		
A: Mon-Fri: Every H+00 (0600-1800) Sat-Sun: 0700 0800 1000 1200 1300 1500 1700 2000 LT	Weather forecast, including wind strength, sea swell and possible storm / cyclone warnings (if in force), for coastal waters of Fiji and surrounding islands. Broadcasts in Fijian on A , Hindi on B and English on C .		
B: Mon-Fri: Every H+00 (0600-2000) Sat-Sun: 0700 0800 1000 1200 1300 1500 1700 2000 LT			
C: Mon-Fri: Every H+00 (0600-1700) Sat-Sun: 0700 0800 0900 1000 1200 1400 1700 LT			

SHIPS' WEATHER REPORTS**PORT METEOROLOGICAL OFFICES**

Page 275, delete **CHILE** section and replace by:

CHILE**Valparaiso**

Servicio Meteorológico de la Armada
Subida Cementerio No. 300
Playa Ancha
Valparaíso
Telephone: +56 32 208965
Fax: +56 32 208914
E-mail: servimet@directemar.cl

Servicio Meteorológico de la Armada Ad13/06

Page 275, delete **FALKLAND ISLANDS (UK)** section and replace by:

FALKLAND ISLANDS (UK)**Port Stanley**

Capt. J Clark
Marine Officer
Fisheries Department
Port Stanley
Telephone +500 27260
Fax: +500 27265
E-mail: director@fisheries.gov.fk

Director of Fisheries, Falkland Islands Government Ad13/06

Page 275, **JAPAN** section delete **Headquarters** and **Kobe** and replace by:

Headquarters

Toshifumi Fujimoto
Senior Scientific Officer
Marine Division
Global Environment and Marine Department
Japan Meteorological Agency
1-3-4 Otemachi, Chiyoda-ku
Tokyo 100-8122
Telephone: +81 3 32116909
Fax: +81 3 32116908
E-mail: VOS@climar.kishou.go.jp

Kobe

Port Meteorological Officer
Kobe Marine Observatory
1-4-3 Wakinohamakaigan-dori, Chuo-ku
Kobe 651-0073
Telephone: +81 78 2228918
Fax: +81 78 2228946

Japan Meteorological Agency Ad13/06

Page 276, **MALAYSIA** section delete and replace by:

MALAYSIA**Port Bintulu**

Siao Chin Tick, PMO
Bintulu Meteorological Station
P.O. Box 285
97007 BINTULU
Sarawak
Fax: +60 86 314386

(Continued on next page)

Port Klang

Mohamad Shah Ani, PMO
 Malaysian Meteorological Department
 Jalan Sultan
 46667 PETALING JAYA
 Selangor
 Fax: +60 3 79578046

Port Kota Kinabalu

Mohamad Sha Ebung, PMO
 Malaysian Meteorological Department (Sabah Branch)
 Tingkat 7, Wisma Dang Bandang
 88000 KOTA KINABALU
 Sabah
 Fax: +60 88 211019

Malaysian Meteorological Department Ad13/06

ICE REPORTS

Page 314, **International Ice Patrol Information Services** table, delete and replace by:

International Ice Patrol Information Services

MARITIME BROADCASTS (See the appropriate station entry for full broadcast details)		
Stations	Broadcast Times (UTC)	Frequencies
NAVTEX		
Boston [F] (USCG)	0045 0445 0845 1245 1645 2045	518 kHz
	Special broadcast during next available time slot	
Saint John's [O] (Canadian CG)	1820 (winter) 2220 (summer)	
RADIO TELEX / SITOR		
Boston (USCG) (NIK via NMF)	0030	6314 8416-5 12579 kHz
	1218	8416-5 12579 16806-5 kHz
RADIO FACSIMILE		
Boston (USCG) (NIK via NMF)	0438 1600 1810	6340-5 9110 12750 kHz
Offenbach (Main) / Pinneberg (See ALRS 3(1))	0930 2100	3855 7880 13882-5 kHz
RADIO TELEPHONE		
Saint Anthony (Canadian CG)	0107 0907 1907	2598 kHz
	Continuous broadcast	VHF Ch 21B 83B
Saint John's (Canadian CG)	0007 0837 1637 2207 & as required	2598 kHz
	Continuous broadcast	VHF Ch 21B 26B 83B
Inmarsat C, SafetyNET		
AOR-E and AOR-W	1200	Inmarsat C SafetyNET
	Special broadcasts of targets outside limits sent upon receipt	
WORLD WIDE WEB		
International Ice Patrol	Updated daily by 1200	http://www.uscg.mil/lantarea/iip/home.html
National Weather Service	Updated daily by 1200	http://weather.noaa.gov/pub/fax/PIEA88.gif
Automated Weather Network		
Joint Air Force & Army Weather Information Network (JAAWIN)	updated daily by 1200	Header: STNT41 KNIK
Facsimile charts on demand		
Fax on demand	Updated daily by 1200	Fax: 1 860 4412773
E-mail on demand	Updated daily by 1200	ftpmail@weather.noaa.gov

USCG Ad13/06

ADMIRALTY LIST OF RADIO SIGNALS – CUMULATIVE LIST OF AMENDMENTS

CORRECT TO BA W13/06

This list is a summary of the entries in the current editions of the Admiralty List of Radio Signals which have had amendments issued in Section VI of the Weekly Edition of Notices to Mariners.

The entries affected are shown in bold type followed by the numbers of the Weekly Editions in which amendments for that station were issued.

These summaries are issued on a quarterly basis.

VOLUME 1, PART 2, NP 281(2), 2005/06

Published BA Wk 26/05

VOLUME 2, NP 282, 2006/07

Published BA Wk 7/06

RADIO DIRECTION FINDING STATIONS

RADAR BEACONS

50600 10	78805 7	80850 11	82105 7	92720 7
50720 8	78806 13	81230 7	82113 7	94780 11
54940 9	79001 7	81235 7	82735 7	95805 10
57590 7	79015 7	81621 12	82740 7	96200 8
69930 7	79029 7	81776 10	82836 8	98790 7
73075 12	79175 7	81787 7	87420 7	99290 10
74265 7	79180 7	81795 7	91800 7	
77350 13	80750 13	81984 11	92700 7	

USEFUL CONTACTS WITHIN THE UNITED KINGDOM HYDROGRAPHIC OFFICE

DIFFERENTIAL GPS (DGPS)

29

MARITIME RADIO STATIONS

ARGENTINA 26
 AUSTRALIA 30, 42
 BRAZIL 29
 CANADA (Arctic Coast, Atlantic Coast and Saint Lawrence River) 28, 34
 CANADA (Pacific Coast) 28
 CHILE 27, 31, 36, 40, 44 2006: 12
 CHINA 36
 ECUADOR 27, 41
 FALKLAND ISLANDS 51
 GREENLAND (Denmark) 32, 33, 50
 GUYANE FRANÇAISE 2006: 10
 ÎLES DE LA SOCIÉTÉ 43
 JAPAN 26, 27, 40, 42
 MARTINIQUE (France) 34 2006: 10
 NAURU 34
 NEW ZEALAND 48
 NIUE ISLAND (NZ) 29
 PERU 2006: 6
 TAIWAN 33
 THAILAND (East Coast) 28, 52
 UNITED STATES (Pacific Coast) 34
 URUGUAY 48 2006: 4
 VIETNAM 49 2006: 5

SPAIN (Islas Baleares) 7, 9

LEGAL TIME

7,13

UNIVERSAL TIME

7, 8

VOLUME 3, PART 2, NP 283(2), 2006/07

Published BA Wk 13/06

MARITIME SAFETY INFORMATION (MSI)

SAFETYNET

13

13

POLLUTION REPORTS BY RADIO

RADIO WEATHER SERVICES AND NAVIGATIONAL WARNINGS

47 2006: 12

AUSTRALIA 13
 CUBA 13
 FIJI 13

SHIP REPORTING SYSTEMS

SHIPS WEATHER REPORTS

39

PIRACY AND ARMED ROBBERY REPORTS

CHILE 13
 FALKLAND ISLANDS 13
 JAPAN 13
 MALAYSIA 13

45, 47

DIAGRAMS

ICE REPORTS

AUSTRALIA MRCC & MRSC LIMITED COAST RADIO SMALL CRAFT (Page 46) 30
 BERMUDA & CARIBBEAN (Page 50) 36
 CANADIAN COAST GUARD - GREAT LAKES NETWORK MARINE COMMUNICATIONS & TRAFFIC SERVICE CENTRES (MCTS) (Page 72) 28
 CENTRAL AMERICA, COLOMBIA, ECUADOR, PANAMA AND PERU, MARITIME RADIO STATIONS, MRSC, (Page 207) 27
 CHILE MARITIME RADIO STATIONS MRSC (Page 91) 44
 CHILE MARITIME RADIO STATIONS MRSC (Page 97) 31
 GREENLAND, MARITIME RADIO STATIONS, ISLAND COMMANDER GREENLAND, (Page 135) 32, 33
 JAPAN NORTH, Tokyo Coast Radio Station RT (HF) (Page 170) 27
 JAPAN SOUTH, MRCC (Page 171) 27
 NORTH PACIFIC, SOUTHWESTERN PART, MARITIME RADIO STATIONS, MRCC & MRSC (Page 222) 34
 URUGUAY, MARITIME RADIO STATIONS (Page 247) 4
 VIETNAM - NORTH, MARITIME RADIO STATIONS, MRCC & MRSC, VIETNAM NATIONAL MARITIME BUREAU - HANOI (Page 255) 49
 VIETNAM - SOUTH, MARITIME RADIO STATIONS MRCC & MRSC (Page 256) 49
 2006: 5

13

DIAGRAMS

AUSTRALIA SAFETY NET, METAREA X-POR & IOR 13

VOLUME 5, NP 285, 2005/06

Published BA Wk 23/05

GLOBAL MARITIME DISTRESS AND SAFETY SYSTEM (GMDSS)**Chapter 3: COMMUNICATIONS SYSTEMS FOR USE IN THE GLOBAL SYSTEM** 23, 27, 28, 29, 42, 52**Chapter 9: VHF DSC, LIST OF COAST STATIONS FOR SEA AREA A1** 23, 31, 39, 40, 41, 43, 50, 51, 2006: 5**Chapter 10: MF DSC, LIST OF COAST STATIONS FOR SEA AREA A2** 23, 26, 40, 50 2006: 5**Chapter 11: HF DSC, LIST OF COAST STATIONS FOR SEA AREA A3 AND A4** 23, 25, 50, 2006: 10**Chapter 12: INMARSAT** 33, 52**Chapter 14: MARITIME SAFETY INFORMATION (MSI) UNDER THE GMDSS** 24, 26, 30, 35, 48, 50, 2006: 2, 8, 10, 11**Chapter 15: SAFETYNET** 46, 47, 2006: 7, 9, 11**Chapter 16: NAVTEX** 26, 28, 34, 35, 36, 38, 41, 47, 2006: 2**Chapter 17: DISTRESS, SEARCH AND RESCUE** 23, 24, 25, 26, 27, 28, 29, 30, 31, 34, 35, 36, 39, 40, 41, 42, 44, 47, 49, 50, 51, 52 2006: 5, 6, 7**WORLD MARITIME SEARCH AND RESCUE REGIONS CHART 47****DIAGRAMS****NORTH ATLANTIC - EAST, Digital Selective Calling(DSC), Limits of Sea Areas, Diagram R4-A 2006: 5****SOUTH ATLANTIC - WEST, Digital Selective Calling(DSC), Limits of Sea Areas, Diagram R9-A 2006: 5****VOLUME 6, PART 4, NP 286(4), 2005/06**

Published BA Wk 38/05

USEFUL CONTACTS WITHIN THE UNITED KINGDOM HYDROGRAPHIC OFFICE

38

PILOT SERVICES, VESSEL TRAFFIC SERVICES and PORT OPERATIONS**AUSTRALIA** 38, 40, 41, 42**CHINA** 38, 40, 47**INDIA** 38**INDONESIA (Sulawesi)** 39**JAPAN** 38, 47, 52 2006: 4**KOREA, SOUTH** 2006: 8**MALAYSIA PENINSULAR (East Coast)** 2006: 10**MALAYSIA PENINSULAR (West Coast)** 2006: 9**THAILAND (East Coast)** 41, 46

AMENDMENTS TO ADMIRALTY SAILING DIRECTIONS 2006**NP 13 Australia Pilot Volume I (2005 Edition)****Western Australia - Mary Anne Passage -
Corner Shoals — Depth****241**

Paragraph 6.226 ⁴ *Replace by:*

- ⁴ ENE of Corner Shoals (7 miles WSW), with a
least charted depth of 6.4 m over them.

Australian Notice 5/221/06

[Ad 12/06]

AMENDMENTS TO ADMIRALTY SAILING DIRECTIONS 2006
(in the Australian Charting Area)

In force 25 March 2006

<i>NP No</i>	<i>Page(s)</i>	<i>Title</i>	<i>BA Edition</i>
9	Antarctic		
	3, 253, 255	Antarctic Specially Protected Areas	01/05
	79	Îles Crozet –Île de la Possession – Baie du Marin – Anchorage	52/05
	125-126	South Georgia – Cape Paryadin – Andrews Rocks	06/06
	141	South Shetland Islands – Elephant Island – Cape Valentine – Depth	24/05
	154	South Shetland Islands – Deception Island – Port Foster – Directions	49/04
	161	Antarctic Sound – Hope Bay – Hut Cove – Rocas Denticuladasa – Light beacons	11/05
13	Australia I		
	92	Queensland – Weipa - Anchorages	11/06
	92	Queensland – Weipa - Pilot boarding place	34/05
	111	Northern Territory – Gove Harbour –Light buoys	49/05
	148	Northern Territory – Melville Island – Apsley Strait – Buoyage	33/05
	149	Northern Territory – Darwin – Submarine pipeline; light beacons	11/06
	153	Northern Territory – Darwin – Traffic regulations; light buoys	11/06
	158	Northern Territory – Darwin – Berth; light buoys	11/06
	232-233	Western Australia – Dampier – Leading lights; directions	04/06
	241	Western Australia – Mary Anne Passage – Corner Shoals – Depth	12/06
	268	Western Australia – Geelvink Channel – Depth	50/05
	280-281, 283-284	Western Australia – Approaches to Fremantle – Depths; pilotage; directions	43/05
	314	Western Australia – Hopetoun – Mary Anne Haven – Beacons	47/05
	347	South Australia – Thistle Island – Light buoy	08/06
	362, 364, 366	South Australia – Whyalla to Port Pirie – Pilotage	33/05
	386, 389	South Australia – Adelaide – Depth; leading beacons	11/06
	392	South Australia – Port Giles – Depths	50/05
14	Australia II		
	102	Victoria – Port Phillip – South Channel – Wrecks	49/05
	117-119	Victoria – Port of Melbourne; Port Phillip – Traffic regulations; by-pass channel	06/06
	117	Victoria – Port Phillip – Prohibited anchorage and fishing area	09/05
	147-148, 150-151, 153	Victoria – Corner Inlet; Port Albert – Pilotage	10/05
	241	Tasmania – Blackman Bay – Denison Canal – Depths; directional light	04/06
	247	Tasmania – Blackman Bay – Marion Narrows – Depth; leading lights	52/05
15	Australia III		
	95	New South Wales – Lake Macquarie – Leading lights	06/06
	136	Queensland – Moreton Bay – East Channel – Depth	08/06
	217	Queensland – Hillsborough Channel – Fantome Rocks – Depth	05/06
	252	Queensland – Townsville – Breakwater Marina Channel – Depth	04/06
	260	Queensland – Mourilyan Harbour – Depth	04/06
	312	Queensland – Fairway Reef – Wreck	04/06
	377-378	Queensland – Torres Strait – Gannet Passage; Herald Patches – Depths; buoyage	04/06
	377	Queensland – Torres Strait – Gannet Passage – Depth	06/06
33	Philippine Islands		
	68	Sulu Sea – Tabbataha Reefs – Dangerous rock; marine reserve	04/06
	125	Sulu Sea – San Miguel Islands – Don Juan de Austria Shoal – Rock	48/05
	404-406	Cebu Harbour and approaches – Port development; depths	09/06
34	Indonesia II		
	86	Jawa, East coast – Pelbuan Surabaya – Dangerous wreck; buoy	17/05
	88	Java Sea – Madura Oil Terminal – Dangerous wreck	45/05
	223	Kalimantan, South Coast – Tanjung Selatan – Dangerous wreck	45/05
	226	Java Sea – Tanjung Selatan eastsoutheastwards – Dangerous wreck	20/04
	246	Kalimantan, East Coast – Teluk Balikpapan – Racon	28/05
	246, 249	Kalimantan – Selat Makasar – Bekapai Oilfield southwestwards – Dangerous wreck	21/04
	249	Kalimantan, East Coast – Senipah Oil Terminal to Tanjung Pamarung – Buoyage; development	09/06
	255	Kalimantan, East Coast – Pelbuan Bontang Coal Terminal	36/04
	256	Kalimantan, East coast – Lhotuan – Anchorage	25/05
	271	Sulawesi, South West Coast– S approach channel to Makassar – Shoal patch	47/05
	272	Sulawesi, South West Coast– WSW approach channel to Makassar – Wreck	46/05
	364	South East Sulawesi – Pulau Dehaan (de Haan Island) – Light	21/05
	433	Java Sea – Mine risk	34/03

<i>NP No</i>	<i>Page(s)</i>	<i>Title</i>	<i>BA Edition</i>
35	Indonesia III 183	Irian Jaya, South Coast– Approaches to Merauke – Wreck	05/06
36	Indonesia I 69 81 127 144-146 144 151 152 211	Sumatera, South Coast – Teluk Lampung – Panjang – Dangerous wreck; obstruction Jawa, North Coast – Pulau-Pulau Tidung – Wreck Sumatera, East Coast – Pulau Saya – Light Pulau Bangka, East Coast – Karang Elliot – Light Pulau Bangka, East Coast – Sungai Baturusa – Leading lights Kalimantan, West Coast – Selat Karimata – Wreck Kalimantan, West Coast – Shoal depths; off-lying dangers Singapore Strait – Sambu approaches – Wreck	38/05 32/05 44/05 28/05 28/05 03/06 42/05 10/06
39	South Indian Ocean 2 79 178 245-248 246-247 252, 254-255	Tsunami Comores – Ile de Mayotte – Anchorage Madagascar – Toamasina (Tamatave) and approaches – Pilotage Seychelles – Victoria and approaches – Anchorages; directions; berth Seychelles – Victoria and approaches – Radio masts Île de La Réunion – Port Réunion – Anchorages; regulations	03/05 04/06 21/05 23/05 43/05 41/04
44	Malacca Strait and West Coast of Sumatera 2 57-58 57-58 60 69, 308 118-119 130-131, 133-134, 137 170-172, 175 171-172, 175 173 209, 222 209, 217-217, 222 215, 218 215-216 211 221 221-222 228, 230 228, 230 236, 238, 241-242, 278 299 302 303 390 397-398	Tsunami Sumatera, North Coast – Moored storage tanker Sumatera, North Coast – Moored storage tanker Malacca Strait – Permatang Sedepa (One Fathom Bank) – Wreck Sumatera, North and North West Coasts – Prohibited area Sumatera, North East Coast – Selat Bengkalis – Depths; wreck Thailand, West Coast – Phuket approaches – Light Malacca Strait – Lumut Maritime Terminal; Lekir Bulk Terminal – Directions; pilotage Malacca Strait – Lumut Maritime Terminal; Lekir Bulk Terminal Malacca Strait – Pulau Pangkor – Tanjung Terengganu – Quarantine anchorage Singapore Strait - Central Part – Depths Singapore Strait - Selat Phillip – Anchorages Singapore Strait – Western Part – Nipa Transit area – Dangerous wreck Singapore Strait - Selat Phillip – Buoyage Singapore Strait – Indonesia – Sambu approaches – Wreck; obstructions Singapore Strait – Indonesia – Batuampar – Lights; beacons; buoys; port developments Singapore Strait – Indonesia – Main strait – Wreck; buoys Singapore Strait – Middle Channel – Ramunia Shoals – Wreck; buoy Singapore Strait – Middle Channel – Ramunia Shoals – Wreck; buoy Singapore Strait – Outer anchorage – Amended areas and usage; pilotage; depths; wrecks; ferries Singapore – Sembawang – Prohibited area Malaysia – Johor – Sungai Santi – Power transmission line Singapore – Pulau Tekong northwest – Works Sumatera, West Coast – Unjung Masang – Wreck Sumatera, West Coast – Pulau Karaba Kecil – Depths; directions	03/05 31/03 45/03 50/04 34/03 31/05 45/03 20/05 45/04 33/05 06/04 32/05 38/05 31/03 10/06 29/04 29/04 31/05 11/06 06/04 18/04 21/04 18/04 38/05 22/05
51	New Zealand 51 87 104, 111 202 228 228 239 253 278 283-284	North Island – Cape Reinga to The Bluff – Pandora Bank – Natural conditions South Island – Golden Bay – Tarakohe Harbour – Restricted area North Island – Approaches to Wellington – Taputeranga Island – Wreck North Island – Bay of Islands – Opuia – Directions; leading lights Hauraki Gulf – Motuihe Channel – Fast ferry zone North Island – Motuihe Channel – Emu Rock – Light beacon North Island – Waiheke Island – Marine reserve North Island – Mercury Bay – Approaches to Whitianga – Sand bar North Island – Hawke Bay – Approaches to Napier – Whirinaki Bluff light North Island – Napier – Inner Harbour – Leading Lights 33/05	23/05 39/05 07/06 32/05 26/05 31/05 43/05 39/05 49/05 01/02/06 33/05
60	Pacific Islands I 3 110 183, 203 200 201 201-202, 204-205 201	Navigational Aids – Beacons – Cyclonic damage Solomon Islands – New Georgia Island – Viru Harbour – Leading beacons; beacons Papua New Guinea – Bright Island Passage; Shortland Reef – Lights Papua New Guinea – Raven Channel – Light beacons Papua New Guinea – South-West approaches to Raven Channel – Danu-gedu Reef – Light beacon Papua New Guinea – Approaches to Goschen Strait – Directions Papua New Guinea – Hibwa Island – Light beacon	13/04 35/04 47/05 30/05 30/05 45/05 30/05

<i>NP No</i>	<i>Page(s)</i>	<i>Title</i>	<i>BA Edition</i>
	201	Papua New Guinea – Raven Channel – Diligaoli and Taori-Nanu Reefs – Light beacons	30/05
	206	Papua New Guinea – Goschen Strait – Gallows Reef – Light beacon	33/05
	349	Caroline Islands – Pikelot Island – Tarang Reef – Obstruction; depth	10/05
	370	Marianas Islands – Siapan Harbour – Dredged depth	13/05
	371	Northern Marianas Islands – Siapan harbour approach – Shoal	13/04
61	Pacific Islands II		
	24, 203	Fiji – Great Astrolabe Reef eastwards – Volcanic activity	01/02
	74	Nouvelle-Calédonie – Approaches to Nouméa – Île Ouen westwards – Taréti – Light buoy	39/02
	99	Nouvelle-Calédonie – Passe de Poum – Leading line	08/02
	113	Nouvelle-Calédonie, North-East coast – Anchorage	11/04
	121	Nouvelle-Calédonie, North-East coast – Beacon; shoal	08/04
	130	Îles Loyauté – Passage between Île Maré and Île Lifou – Positions of islands	11/04
	137	Vanuatu – Anelghowhat Bay – Shoal	02/03
	151	Éwosé Island – Anchorage	25/04
	158	Maskelyne Islands – Anchorage	28/04
	161	Ambrym – Submarine volcano	01/05
	162	Ambrym Island – Craig Cove – Anchorage	28/04
	173	Segond Channel, south-east approaches – Anchorages	35/04
	183-184	Aoba Island – Principal marks	33/04
	194-195	Santa Cruz Islands – Vanikolo – Anchorages; buoyage	48/04
	197-199	Reef Islands – Forrest Reef; Nalongo; shoals	49/04
	199-201	Santa Cruz Islands – Duff Islands; Mitre Island – Depths	50/04
	225	Fiji – Viti Levu – Nadi River approaches – Rock; depth	40/04
	263	Fiji – Vanau Levu – Ravi Ravi Passage – Directions	03/05
	270	Fiji – Vanau Levu – Malau – Arrival information	05/05
	291	Fiji – Vanau Levu – Point Passage – Rocks	20/05
	292	Fiji – Vanau Levu – Savusavu – Arrival information	13/05
	299	Fiji – Exploring Isles – Off-lying reefs	25/05
	301	Fiji – Exploring Isles – Directions for American Passage – Off-lying shoal	26/05
	316	Fiji – Viti Levu northwestwards – Balmoral Reef southwestwards – Shoal depth	33/01
	345	Tonga – Vava'u Group northwestwards – Volcanic activity	08/02
	353	Samoa Islands – Durham Shoal – Depth	40/04
	359	American Samoa – Manua Islands southeastwards – Volcanic activity	39/02
	373	Pago Pago Harbour – Buoyage	35/04
	402	Butaritari Atoll – Directions	48/01
62	Pacific Islands III		
100	The Mariner's Handbook		
	2	Australian and New Zealand charts	25/05
	4	International charts – International boundaries and national limits	37/05
	6	Electronic chart display and information system	29/05
	6	Electronic navigational charts	29/05
	6	Electronic navigational charts – Updating	42/05
	30	Interpretation of source data	29/05
	41	Use of moored marks	10/05
136	Ocean Passages for the World		
	168	Singapore ⇒ Hong Kong – Routes – Low-powered vessels; distance	26/04

[Ad13/06]

To accompany Australian Notice to Mariners 359/2006.

**CUMULATIVE LIST OF AUSTRALIAN
NOTICES TO MARINERS
APRIL 2006**

Prepared by the Australian Hydrographic Service
by direction R. NAIRN
Hydrographer of Australia

CUMULATIVE LIST OF AUSTRALIAN NOTICES TO MARINERS

General Information

1. This list identifies, by its chart number and current edition, each Australian (Aus) navigational chart of the Australian Charting Area (see *Australian Notice to Mariners No 1 of 2006 and Australian Seafarers Handbook AHP20*).
2. Unless a Chart Correction Log (NP 133) is being used to perform a similar function, then, until a new edition is published in October 2006, this list should be corrected up to date from the information given in Section I of successive Editions of Australian Notices to Mariners by:
 - (a) adding new charts, each with its date of publication;
 - (b) amending the dates and deleting the listed Notices to Mariners for charts of which new editions have been published;
 - (c) deleting all reference to charts that have been withdrawn; and
 - (d) adding the numbers of the appropriate Notices to Mariners against each relevant chart.
3. All Notices to Mariners that have affected each chart during the last two years are listed against it. If the chart has not been affected by a notice during that period then the most recent notice, if any, is shown.

The Current Edition of a Chart

4. When a new chart is first published the date of publication is shown in the publication note that appears below the centre of the southern outer border; this date remains unchanged throughout successive new editions. The date of each new edition is printed on the chart a few centimetres to the right of the publication note.
5. A new edition on being published and issued as notified by a Notice to Mariners becomes the current edition and the previous edition is superseded. When a chart is withdrawn as directed by a Notice to Mariners there ceases to be any current edition of it. Withdrawn charts and superseded editions should not be used for navigation, nor should current editions that have not been corrected for relevant Notices to Mariners.
6. Users of this cumulative list are reminded that the authoritative source for information concerning current editions of charts and the corrections that affect them in the Australian Area are Editions of Australian Notices to Mariners.

<i>Chart Number</i>	<i>Current Edition</i>	<i>Notices to Mariners affecting the chart from Edition 7 dated 2 April 2004</i>
Aus 4	Mar 1989	2005 -413-493-556- 2006 -124-348-
Aus 6	May 2000	2004 -696-830- 2005 -507-678-
Aus 13	May 2002	2005 -678- 2006 -168-
Aus 14	Oct 1996	2004 -323- 2005 -943- 2006 -168-
Aus 15	Jun 1995	2004 -324-434-475-536-742-982- 2005 -358-944-993-1067- 2006 -260-
Aus 16	Aug 2001	2005 -678- 2006 -261-
Aus 17	Feb 2001	2005 -678-
Aus 18	Nov 1995	2005 -678-
Aus 20	Oct 1975	2004 -476-
Aus 21	Jan 1992	2002 -154-
Aus 26	Aug 2003	2004 -697-780-871-983- 2005 -165-240-284-406-640-858-859-892-893-994-996-1068-1069- 2006 -47-81-169-349-
Aus 28	Aug 2003	2004 -780-1068- 2005 -165-240-284-406-640-859-892-893-995-996-1069- 2006 -47-81-169-349-
Aus 29	Jan 1997	2005 -240-
Aus 32	Feb 2004	2004 -435-477-527-1021- 2005 -126-678-824-895-
Aus 37	Jun 1950	2003 -599-
Aus 40	Jun 1965	2005 -998-
Aus 43	Dec 1944	2002 -123-
Aus 44	May 2003	2004 -1020- 2005 -285-406-
Aus 45	Mar 1999	2005 -678-
Aus 50	Aug 1973	2004 -932- 2005 -947-
Aus 52	Jan 1988	2005 -862-
Aus 53	Aug 1987	2005 -862-
Aus 54	May 2003	2005 -548-862- 2006 -127-
Aus 55	May 2002	2004 -1071- 2005 -678-1071-
Aus 56	May 2003	2005 -678-
Aus 57	Mar 2005	2005 -510-1072- 2006 -170-351-
Aus 58	Mar 2005	2005 -415-456-510-1035-1072-1106- 2006 -170-
Aus 59	Nov 1987	2004 -537-743-783-1023-1073-1074- 2005 -128-129-130-326-327-361-362-415-456-1035-1106-
Aus 61	Oct 2000	2004 -834- 2005 -678-
Aus 62	Aug 2004	2005 -445-457-
Aus 63	May 1991	2006 -48-221-
Aus 64	Feb 2002	2005 -586-1108-
Aus 72	Apr 1956	2005 -678-
Aus 81	Jan 2005	2005 -328-329-600-683-
Aus 105	May 1985	2003 -798- 2006 -296-
Aus 109	Nov 2003	2004 -527-582- 2005 -133-406-
Aus 110	Jan 1983	2004 -582- 2005 -277- 2006 -308
Aus 111	Mar 1997	2004 -660-747- 2005 -38-242-513-560-732- 2006 -264-
Aus 112	Jul 2002	2004 -480-745-836- 2005 -132-201-353-826-1054-
Aus 113	Oct 1986	2004 -480-745-836- 2005 -88-132-826-
Aus 114	Nov 2003	2004 -481-661-746- 2005 -242-512-678-731-732-827- 2006 -264-
Aus 115	Jan 1998	2004 -539- 2005 -243-330-641- 2006 -82-307-
Aus 116	Jun 1993	2004 -681-837- 2005 -445-458-561-899-949-950-
Aus 117	Sep 2004	2005 -132-242-493-512-513-560-731-732-780-827- 2006 -264-
Aus 118	Jun 1983	2004 -582- 2005 -733-
Aus 119	Apr 2004	2004 -527-748- 2005 -232-734- 2006 -265-
Aus 120	Jan 1976	2004 -326-403-541-623-700-784-838- 2005 -56-166-601-
Aus 121	Nov 1978	2004 -505-785-1076-
Aus 125	Feb 1994	2004 -439-507-508- 2005 -232- 2006 -353-
Aus 127	Mar 2001	2004 -791- 2005 -244-720-
Aus 134	Nov 2002	2005 -363-514-863- 2006 -171-
Aus 136	Apr 2000	2004 -789- 2005 -57-277-287-364-515-516- 2006 -223-
Aus 137	Aug 1999	2004 -542-701- 2005 -58-134-366-406-685- 2006 -172-224-312-
Aus 139	Oct 2003	2005 -190-365-562-982-999-1040-
Aus 140	Mar 2001	2005 -88-
Aus 141	Mar 2001	2004 -440- 2005 -720-
Aus 143	May 2003	2004 -369-405-482-544-626-664-938- 2005 -63-113-190-205-247-289-418-521-1001- 2006 -56-
Aus 144	Nov 2001	2004 -369-405-483- 2005 -113-190-205-289-1001-
Aus 148	May 2002	2004 -485-589-878- 2005 -720-
Aus 150	Mar 1995	2004 -665- 2005 -319-522- 2006 -176-296-
Aus 151	Feb 1994	2004 -939- 2005 -445-784- 2006 -176-
Aus 152	Jun 1992	2004 -588- 2005 -784- 2006 -176-
Aus 154	Mar 1999	2004 -509-587- 2005 -64-247-368-418-520-564-644-645-951-1111- 2006 -85-130-174-175-
Aus 155	Jun 1986	2004 -563-627-664-769-863- 2005 -63-247-418-493-951- 2006 -85-174-

<i>Chart Number</i>	<i>Current Edition</i>	<i>Notices to Mariners affecting the chart from Edition 7 dated 2 April 2004</i>
Aus 157	Jun 1981	2004 -586-626-937-938-991-1026- 2005 -277-689-782-829-1002-1003- 2006 -173-225-226- 358-
Aus 158	Sep 2004	2005 -62-190-205-289-331-783-1001- 2006 -56-357-
Aus 163	Sep 1993	2004 -753- 2005 -901-
Aus 164	Jun 1999	2004 -404-703-704-751- 2005 -586-
Aus 167	Mar 1997	2004 -625-752- 2005 -736-865-1042-
Aus 168	Oct 2002	2004 -625-877-1008- 2005 -720-1042-
Aus 169	Jan 2005	2005 -367-1041- 2006 -53-54-
Aus 170	Dec 1970	2004 -663-750-840- 2005 -277-353- 2006 -55-
Aus 171	Jan 2006	2006 -314-
Aus 172	Sep 2005	2006 -52-
Aus 173	May 1972	2004 -366-584-624-874-875-934-989-990-1078- 2005 -246-688-
Aus 174	Feb 1973	2004 -329-584-874-875- 2005 -246-720-
Aus 176	Jan 2002	2005 -245-517-628-
Aus 177	Aug 2001	2005 -720-
Aus 178	Jun 2002	2004 -331-441- 2005 -643-720-
Aus 179	Jun 2002	2004 -442-443- 2005 -38-519-
Aus 181	Aug 1983	2004 -484- 2005 -65-113-136-332-523-605-1074-
Aus 182	Jan 1998	2004 -484- 2005 -96-113-136-332-525-785-1074-
Aus 191	Aug 2004	2004 -971- 2005 -113- 2006 -297-
Aus 192	Nov 2003	2004 -426-614- 2005 -38-407-1055-
Aus 193	May 2004	2005 -113-320-409- 2006 -214-296-
Aus 195	Oct 2000	2004 -682- 2005 -494-720-721-
Aus 197	Aug 2001	2004 -864- 2005 -157-629-933- 2006 -347-
Aus 198	Jun 2005	2005 -810-811-852-853- 2006 -346-
Aus 199	Aug 1996	2004 -564-770- 2005 -233-445-447-448-549-811-882- 2006 -346-
Aus 200	Dec 1992	2004 -349-392-528-615-650-683-915- 2005 -190-495-550-679-766- 2006 -74-347-
Aus 201	Jul 2001	2004 -528-915- 2005 -495-548-550-588-
Aus 202	Jul 2001	2004 -615-683- 2005 -277-588-766- 2006 -74-
Aus 203	Jul 1994	2004 -349-392- 2005 -588-630-631-983-
Aus 204	Mar 2002	2004 -470-529- 2005 -38-449-
Aus 207	Jul 2000	2005 -113- 2006 -215-216-
Aus 208	Oct 1999	2004 -651- 2005 -113-114-768-934- 2006 -216-
Aus 209	Apr 2001	2004 -917- 2005 -158-190-191-496-723-
Aus 215	Nov 2002	2004 -393-470-529- 2005 -720-
Aus 216	Nov 2001	2005 -445-722-767-
Aus 217	Feb 2004	2004 -916- 2005 -353-
Aus 219	Aug 2001	2004 -684-972- 2005 -190-192-
Aus 220	Oct 1992	2004 -565-616-652- 2005 -497-586-724-725-
Aus 235	Dec 1992	2004 -315-394-471-531-653-826-867- 2005 -193-353-451-498-499-500-554-634- 2006 -39-217-
Aus 236	Dec 1992	2004 -315-350-351-352-394-566-617-771-826-865-866-918-973-974-1011- 2005 -38-41-89-113-160-193-194-451-498-499-500-501-502-553-554-589-590-591-633-726-769-809-884- 2006 -115-116-119-
Aus 237	Feb 2000	2004 -427-826-866-973-974- 2005 -41-157-355-452-552-591-769-1096- 2006 -117-
Aus 238	Feb 1999	2004 -530-686-919-1010- 2005 -116-234-278-406-410-452-592- 2006 -76-118-
Aus 241	Jun 1977	2004 -732-772- 2005 -195-411- 2006 -298-
Aus 242	Jan 2006	
Aus 243	Jan 2006	
Aus 244	Oct 1999	2004 -316-774-920-976-1058- 2005 -42-232-279-635-812-
Aus 245	Oct 1999	2004 -316-920-976-1058- 2005 -42-113-279-812-
Aus 246	Jan 2006	
Aus 247	Mar 2000	2004 -499-500-654-688-733-922-1012-1055-1059-1060- 2005 -113-356-985- 2006 -218-
Aus 248	Sep 2004	2005 -38-113-118-
Aus 249	Jul 2005	2005 -1062- 2006 -120-121-250-
Aus 250	Nov 2005	2006 -250-
Aus 251	May 2005	2005 -987- 2006 -120-
Aus 252	May 2005	2005 -680-
Aus 253	May 2005	2006 -299-
Aus 254	Jun 2005	2005 -813-886-
Aus 255	Jul 2005	
Aus 256	May 2005	2005 -765-815- 2006 -122-296-
Aus 257	Jan 2006	
Aus 258	Jan 2006	2006 -251-
Aus 259	Oct 1984	2004 -499- 2005 -988-
Aus 260	May 2005	
Aus 261	May 2005	

<i>Chart Number</i>	<i>Current Edition</i>	<i>Notices to Mariners affecting the chart from Edition 7 dated 2 April 2004</i>
Aus 262	Jul 2005	
Aus 263	May 2001	2004-430-
Aus 264	Oct 2001	2004-430-2005-277-
Aus 268	Jun 2005	2005-814-
Aus 270	May 2005	2005-887-
Aus 280	Jun 2005	2005-816-938-1027-1028-
Aus 281	Jul 2004	2005-48-121-353-
Aus 289	Mar 2003	2005-353-682-809-982-1104-2006-79-
Aus 292	Jun 2005	2005-730-941-982-1064-1099-
Aus 293	Jun 1988	2004-322-355-399-695-740-829-1016-1064-1065-1066-2005-113-729-730-772-941-982-1099-2006-252-
Aus 294	Nov 1988	2005-157-682-730-982-
Aus 296	Nov 1988	2004-399-2005-319-682-809-982-1104-2006-163-167-
Aus 299	Feb 1988	2004-322-740-1016-1066-2005-586-730-982-1032-2006-252-
Aus 301	Apr 1990	2005-239-493-682-1104-
Aus 302	Jun 1992	2005-122-
Aus 303	May 1999	2005-51-52-493-2006-46-305-
Aus 304	May 2000	2005-52-720-
Aus 305	Jun 1997	2005-319-1066-1105-
Aus 306	Jun 2003	2005-88-1066-2006-163-
Aus 308	Sep 2003	2004-476-577-659-779-929-2005-53-240-548-820-
Aus 309	Dec 1989	2004-400-401-476-621-929-984-2005-240-277-406-508-639-820-858-
Aus 310	Nov 2002	2005-765-
Aus 311	Nov 2003	2005-240-277-
Aus 312	Nov 2003	2005-38-199-240-324-
Aus 313	Nov 2003	2004-357-359-2005-765-
Aus 314	Sep 2003	2004-1020-2005-88-285-
Aus 315	Aug 2001	2005-240-319-508-
Aus 316	Oct 1990	2004-621-984-2005-240-445-
Aus 317	Jun 2003	2004-362-363-1020-2005-285-406-
Aus 318	Nov 1989	2004-831-832-833-2005-765-
Aus 319	Oct 2000	2004-833-2005-285-586-
Aus 320	Dec 1989	2004-478-930-931-2005-765-778-997-
Aus 321	Nov 2003	2004-360-361-1069-2005-232-
Aus 322	Aug 2003	2005-285-765-997-1034-
Aus 323	Nov 1995	2004-579-985-2005-88-945-997-998-
Aus 324	Jan 1975	2004-932-2005-947-
Aus 325	Nov 1966	2001-486-
Aus 326	Jun 1986	2002-123-
Aus 327	Aug 1967	2004-436-538-580-698-699-834-835-2005-55-127-286-1036-2006-48-170-221-
Aus 328	Dec 1985	2004-436-538-580-699-834-835-2005-416-457-586-896-1036-1037-2006-48-221-
Aus 329	May 1967	2005-896-
Aus 330	Oct 1968	2003-558-
Aus 331	Sep 1968	2005-1038-
Aus 332	May 1988	2004-364-437-987-2005-232-1039-
Aus 333	May 1990	2004-364-437-987-2005-200-277-1039-2006-263-
Aus 334	Oct 2000	2004-438-539-2005-202-548-559-684-826-2006-49-352-
Aus 335	Dec 1988	2004-438-539-540-581-2006-315-
Aus 336	Aug 1984	2004-540-
Aus 337	Mar 2000	2005-353-899-
Aus 341	Jan 1997	2004-505-506-700-933-
Aus 342	Mar 1997	2002-503-
Aus 343	Jun 1990	2004-749-2005-167-765-1110-2006-129-
Aus 344	Apr 1992	2004-788-
Aus 345	Mar 1992	2004-749-2005-93-167-319-459-563-735-1000-1110-2006-51-129-
Aus 346	Apr 1992	2005-586-2006-51-
Aus 347	Aug 2001	2005-244-445-459-
Aus 348	Nov 2001	2005-445-2006-354-355-
Aus 349	Jul 1975	2005-135-232-277-687-828-2006-84-313-356-
Aus 353	Aug 1967	2004-702-988-2005-88-232-781-900-
Aus 354	Feb 1969	2004-583-585-2005-245-781-
Aus 355	Nov 1968	2004-585-663-750-876-936-2005-59-277-2006-315-
Aus 356	Dec 1970	2004-443-1080-2005-59-60-232-277-369-720-736-
Aus 357A	Sep 1983	2004-589-878-2005-65-66-206-232-248-369-461-524-720-2006-132-266-267-
Aus 359	Jan 1992	2005-88-207-208-408-446-606-720-2006-132-249-
Aus 360	Jan 1992	2004-824-2005-406-408-548-
Aus 361	Oct 2000	2004-824-2005-809-2006-296-
Aus 362	Feb 1992	2005-548-551-2006-215-
Aus 363	Jan 1992	2004-685-2005-39-551-984-

<i>Chart Number</i>	<i>Current Edition</i>	<i>Notices to Mariners affecting the chart from Edition 7 dated 2 April 2004</i>
Aus 364	Feb 1992	2005-38-39-40-157-498-
Aus 365	Sep 1967	2004-532-563-867-2005-493-498-885-1057-1058-
Aus 366	Jun 1991	2004-499-773-921-922-975-2005-113-117-190-321-322-503-935-1058-
Aus 367	Oct 1977	2004-396-499-567-921-922-923-924-977-2005-88-90-157-936-986-1061-
Aus 370	Nov 1986	2004-532-924-925-2005-319-2006-120-
Aus 371	Jul 1991	2004-472-532-656-657-925-2005-45-190-937-2006-296-
Aus 372	Jul 1991	2004-320-473-501-532-618-657-736-1015-2005-164-280-765-1063-2006-78-
Aus 373	Aug 1984	2004-320-321-431-473-501-532-618-737-1062-2005-91-120-164-277-280-357-2006-78-
Aus 374	Dec 1984	2004-431-432-474-532-572-573-574-2005-282-406-887-1027-1028-
Aus 375	Apr 1985	2004-355-532-572-573-574-575-619-928-2005-939-1029-1030-
Aus 376	Mar 2006	
Aus 377	Oct 1985	2004-532-1017-2005-236-445-593-774-856-989-1100-2006-41-163-165-219-
Aus 378	Mar 1974	2003-877-
Aus 379	Feb 1974	2005-856-888-2006-166-
Aus 380	Jul 1986	2005-888-
Aus 381	Aug 1971	2004-658-2005-594-636-637-681-889-990-1065-1101-2006-44-45-
Aus 382	Jul 1971	2005-506-1065-1102-1103-
Aus 383	Nov 1995	2005-931-2006-44-45-255-
Aus 384	Sep 1991	2005-931-990-
Aus 386	Mar 1992	2004-1067-2005-890-
Aus 387	Mar 1992	2004-1019-1067-2005-890-2006-302-
Aus 388	Nov 1990	2004-1019-2005-890-2006-302-
Aus 389	May 1968	2005-555-2006-303-
Aus 395	Mar 1992	2004-563-2005-890-2006-300-
Aus 397	Oct 1992	2005-638-
Aus 399	Jul 1999	2004-741-2005-765-
Aus 400	Aug 2003	2004-1070-2005-765-
Aus 402	Sep 1965	2003-693-
Aus 414	Aug 1969	2004-402-2005-123-241-823-1033-2006-126-
Aus 415	Mar 1992	2004-436-698-2005-286-457-945-946-947-997-1036-1037-
Aus 416	Mar 1992	2004-436-437-2005-457-1036-1037-1039-
Aus 417	Sep 2000	2004-581-2005-493-1039-2006-49-263-
Aus 422	Jan 2005	2005-333-369-461-524-606-720-736-900-2006-57-113-266-267-313-
Aus 423	Oct 2000	2005-60-66-157-206-207-208-232-248-408-446-461-606-720-2006-249-267-
Aus 424	Oct 2000	2004-685-2005-353-498-551-1057-
Aus 426	Feb 1997	2004-396-532-921-922-923-924-977-1061-2005-113-119-406-454-498-1058-1061-2006-40-
Aus 442	Jan 1958	2004-577-659-
Aus 444	May 1992	2005-93-167-190-563-735-2006-51-296-
Aus 449	Sep 1993	2005-628-
Aus 450	Nov 1991	2003-359-
Aus 451	Jan 1992	2005-765-
Aus 452	Nov 2002	2005-765-
Aus 454	Oct 1998	2005-277-
Aus 461	Apr 1992	2005-638-942-
Aus 462	Nov 1992	2004-1019-2005-638-765-890-2006-258-303-
Aus 487	Jan 2005	2005-369-720-736-2006-57-266-267-313-
Aus 502	Dec 1992	2002-212-
Aus 505	Jul 1965	2005-406-888-1054-
Aus 506	Jan 1987	2002-212-
Aus 514	Jun 1995	2005-931-2006-255-
Aus 518	Feb 2002	2005-809-931-2006-43-
Aus 519	Jan 2003	2005-548-931-2006-43-
Aus 520	Jan 2003	2005-88-931-
Aus 521	Jan 2003	2005-776-809-
Aus 522	Jan 2003	2005-809-
Aus 523	Dec 1991	2004-1018-2005-238-323-
Aus 539	Oct 1999	2005-809-
Aus 547	Jun 1992	2004-620-2006-300-
Aus 567	Jan 1968	2004-658-2005-636-1054-
Aus 568	Aug 1983	2005-1054-1065-1102-
Aus 570	Jul 1944	2005-1054-
Aus 576	Mar 1983	2005-1054-
Aus 600	Nov 1987	2003-759-

<i>Chart Number</i>	<i>Current Edition</i>	<i>Notices to Mariners affecting the chart from Edition 7 dated 2 April 2004</i>
Aus 601	Apr 1999	2005-809-
Aus 602	Mar 2003	2005-809-
Aus 603	Nov 2002	2005-548-
Aus 604	Jun 1992	2005-952-
Aus 605	Mar 2000	2004-223-
Aus 606	Jun 1991	2005-445-
Aus 607	Jun 1991	2004-622-781-2005-232-445-779-
Aus 608	Jun 1995	2004-1022-2005-54-277-2006-113-
Aus 609	Jun 1995	2005-809-
Aus 610	Nov 2000	2005-809-2006-113-
Aus 611	Oct 1998	2005-809-931-
Aus 612	Mar 1996	2005-454-931-2006-296-
Aus 613	Mar 2001	2005-809-
Aus 614	Feb 1994	2005-931-
Aus 615	Mar 2001	2005-809-
Aus 616	Jun 2000	2005-809-931-
Aus 617	Mar 2001	2004-828-2005-770-809-931-
Aus 618	May 1999	2005-628-2006-114-
Aus 620	Feb 1978	2001-594-
Aus 621	Mar 2005	2005-888-
Aus 622	Nov 2004	2005-809-
Aus 623	Jan 1974	2002-233-
Aus 625	Jun 1963	2005-636-
Aus 628	Jul 2000	2005-594-637-857-982-1101-
Aus 629	Dec 1970	2005-594-637-819-857-1054-1101-2006-42-
Aus 630	Dec 1987	2004-658-2005-594-637-681-857-889-990-
Aus 631	May 1983	2002-123-
Aus 644	Jan 2003	2005-851-1054-
Aus 646	Sep 2001	2005-232-2006-259-
Aus 651	Jan 1970	2002-233-2006-303-
Aus 652	Jan 1945	2002-233-2006-303-304-
Aus 654	Oct 2005	2005-1054-2006-163-
Aus 662	Sep 1952	2005-1054-
Aus 663	Mar 1984	2002-268-
Aus 665	May 1981	2002-268-
Aus 666	Mar 1955	2006-256-257-
Aus 667	May 1966	2006-257-301-
Aus 668	Sep 1985	2002-268-
Aus 674	Jan 1975	2002-268-2006-300-
Aus 676	Sep 1979	2005-991-
Aus 679	Feb 1978	2002-268-
Aus 680	Jan 1997	2005-595-
Aus 683	Jul 1999	2005-628-
Aus 684	Jul 1999	2005-851-
Aus 700	Jul 1994	2004-399-829-2005-277-682-730-809-982-1104-2006-220-253-
Aus 701	Jun 1989	2005-493-2006-124-
Aus 710	May 1996	2005-851-
Aus 715	Sep 1994	2005-190-777-2006-163-
Aus 716	Sep 1995	2003-820-
Aus 717	Oct 2003	2005-851-
Aus 720	Aug 2001	2005-493-
Aus 721	May 2003	2005-353-820-
Aus 722	Jun 2003	2004-476-697-929-984-2005-240-277-359-858-891-994-1068-
Aus 724	Jun 2003	2005-628-
Aus 725	Mar 2003	2005-851-
Aus 726	Apr 2003	2005-190-
Aus 727	Mar 2003	2004-831-832-833-2005-851-
Aus 728	Mar 2003	2004-833-2005-586-
Aus 729	Feb 2003	2004-478-930-931-2005-851-
Aus 730	Feb 2003	2004-478-931-2005-778-851-1070-
Aus 732	Apr 2003	2004-579-872-985-2005-232-997-998-
Aus 733	Jan 2003	2004-579-872-2005-851-945-998-
Aus 739	Jun 1986	2002-129-
Aus 740	Jun 1986	2002-600-
Aus 741	Dec 1985	2004-698-2005-55-127-286-2006-170-
Aus 742	Apr 2005	2005-457-599-1037-2006-48-
Aus 743	Oct 1993	2004-538-699-863-2005-1107-1108-2006-48-221-
Aus 744	Sep 1998	2005-416-511-628-896-897-1109-2006-222-
Aus 745	May 1985	2005-586-825-897-2006-222-
Aus 747	Jul 2000	2005-548-1038-
Aus 748	Mar 1994	2005-851-1038-
Aus 749	May 1993	2005-548-898-1038-
Aus 751	Nov 1986	2004-364-437-744-987-2005-157-277-1039-2006-128-

<i>Chart Number</i>	<i>Current Edition</i>	<i>Notices to Mariners affecting the chart from Edition 7 dated 2 April 2004</i>
Aus 752	Jun 1985	2005-113-417-2006-263-
Aus 753	Jun 1988	2004-325-2005-131-200-851-
Aus 754	Jul 2002	2004-480-2005-132-202-548-559-561-684-826-2006-49-352-
Aus 755	May 1985	2004-539-681-2005-406-561-2006-296-307-
Aus 756	Aug 1985	2004-438-681-2005-88-
Aus 757	Oct 1985	2004-504-2005-765-
Aus 758	Nov 1985	2004-504-
Aus 759	Mar 1984	2005-493-733-
Aus 762	Jun 1991	2005-493-
Aus 763	Oct 1991	2005-232-
Aus 776	Nov 2002	2004-749-2005-167-493-602-1110-2006-129-309-
Aus 777	Jun 1982	2004-327-786-787-790-2005-203-353-602-2006-223-296-309-310-311-
Aus 778	Feb 1978	2004-788-789-1024-2005-203-515-809-864-2006-223-311-
Aus 780	Oct 1967	2004-439-2005-93-319-365-459-563-686-1000-2006-50-51-312-
Aus 781	Jul 1980	2005-168-562-563-586-1000-2006-50-83-296-312-
Aus 786	Mar 1965	2004-348-2005-38-
Aus 788	Jun 1996	2004-369-482-2005-190-2006-296-313-
Aus 789	May 2003	2005-88-94-
Aus 790	Nov 2004	2005-851-
Aus 791	Nov 2004	2005-204-851-
Aus 795	Sep 1968	2004-585-624-2005-277-2006-248-315-
Aus 798	Feb 2003	2004-841-2005-60-628-2006-296-
Aus 799	Jun 1996	2004-330-703-704-705-751-752-753-1025-1080-2005-460-736-
Aus 800	Aug 2002	2004-443-841-842-843-2005-60-851-
Aus 801	May 1996	2004-665-792-2005-851-2006-57-131-296-
Aus 802	Dec 1975	2004-444-589-2005-65-157-369-765-2006-57-266-
Aus 805	Jun 2005	2006-133-249-
Aus 806	Jan 1965	2004-389-863-2005-209-445-446-720-2006-249-
Aus 807	Jul 1966	2004-390-863-2005-38-408-
Aus 808	Jan 2001	2004-391-824-863-2005-445-587-629-932-933-1056-2006-38-
Aus 809	Nov 2000	2005-88-629-2006-75-215-296-
Aus 810	Mar 2006	
Aus 811	Mar 2006	
Aus 812	Jan 1994	2004-685-2005-39-115-551-632-984-
Aus 813	Mar 1962	2005-38-39-498-632-
Aus 814	Sep 1987	2004-825-2005-38-40-159-354-451-498-499-500-883-
Aus 817	Jan 1967	2004-499-975-2005-190-411-453-1058-
Aus 818	Mar 2006	
Aus 819	Mar 2006	
Aus 820	Mar 2006	
Aus 821	Mar 2006	
Aus 822	Mar 2006	
Aus 823	Mar 2006	
Aus 824	Mar 2006	
Aus 825	Mar 2006	
Aus 826	Mar 2006	
Aus 827	Jul 2003	2004-354-499-571-656-657-980-2005-277-937-2006-122-
Aus 828	Jun 1990	2004-318-499-501-656-657-980-1014-2005-232-
Aus 829	Apr 1994	2004-318-429-499-501-736-1014-2005-1063-
Aus 830	Mar 2006	
Aus 831	Mar 2006	
Aus 832	Nov 2002	2004-431-499-2005-455-
Aus 833	Oct 2002	2004-431-432-474-499-572-573-739-2005-47-232-282-771-887-1026-1027-1028-
Aus 834	Mar 2006	
Aus 835	Mar 2006	
Aus 836	Mar 2006	
Aus 837	Mar 2006	
Aus 839	Mar 2006	
Aus 840	Nov 2003	2004-433-576-1017-2005-237-445-773-774-855-940-989-1100-2006-41-164-165-254-
Aus 901	Apr 2003	2005-851-
Aus 902	May 2003	2005-851-
Aus 903	May 2003	2005-851-
Aus 905	May 2003	2005-851-
Aus 920	Nov 2005	2006-113-
Aus 4060	Sep 2004	2004-940-941-1027-1061-1067-1069-1077-2005-113-124-125-450-454-462-638-867-890-900-1031-2006-40-123-134-306-356-

<i>Chart Number</i>	<i>Current Edition</i>	<i>Notices to Mariners affecting the chart from Edition 7 dated 2 April 2004</i>
Aus 4070	Sep 2004	2005 -125-232-414-598- 2006 -350-
Aus 4071	Sep 2004	2005 -124-125-325-360-414-598-861- 2006 -306-350-
Aus 4074	Sep 2004	2004 -988- 2005 -628-900-952- 2006 -356-
Aus 4601	Aug 2004	2004 -988-1009- 2005 -190-370-446-866-900- 2006 -249-266-356-
Aus 4602	Sep 2004	2004 -977-1027-1061- 2005 -319-450-454-462-867-1057- 2006 -40-
Aus 4603	Aug 2004	2004 -1019-1067-1069- 2005 -50-124-125-232-324-557-558-597-821-856-890-948-1034-1036- 2006 -80-262-306-
Aus 4604	Aug 2004	2004 -1067- 2005 -353-454-638-809-890-1031-
Aus 4620	Mar 2005	2005 -682-775-854-856-1101-
Aus 4621	Oct 2002	2004 -396-472-532-828-923-924-977-1061- 2005 -113-283-406-454-1031-1101-1102-1103- 2006 -40-255-
Aus 4622	Apr 1993	2004 -1018-1019-1067- 2005 -596-638-890- 2006 -302-303-
Aus 4708	Aug 2004	2005 -125-509-628-860-894-1036- 2006 -248-263-
Aus 4709	Aug 2004	2004 -988- 2005 -353-899-900- 2006 -356-
Aus 4710	Aug 2004	
Aus 4714	Jun 2004	2005 -113-
Aus 4720	Oct 2003	2004 -532- 2005 -38-113-406-597-682-992- 2006 -80-
Aus 4721	Feb 2004	2004 -356-357-358-359-360-361-502-578-1069- 2005 -240-324-493-557-997- 2006 -80-125-
Aus 4722	Feb 2004	2004 -356-359-360-361-362-363-578-698-1069- 2005 -88-124-125-286-822-823-945-946-947-997-1034- 2006 -125-
Aus 4726	Jan 1992	2004 -581- 2005 -899- 2006 -49-
Aus 4727	Jun 1994	2005 -167-190-
AX 60105	May 2003	2006 -296-
AX 60193	Oct 2004	2005 -320-409- 2006 -214-296-
AX 60260	May 2003	2004 -734-827-1055- 2005 -90-
AX 62735	Jan 2004	
AX 63112	Jun 2004	2004 -745-836- 2005 -132-201-353-826-1054-
AX 63200	Sep 2005	
AX 63262	Jan 2006	
AX 67192	Oct 2004	2006 -214-
AX 67215	Aug 2005	
AX 67248	Feb 2006	
AX 67261	May 2003	
AX 70117	Sep 2004	2005 -132-242-493-512-513-560-731-732-780-827- 2006 -264-
AX 70193	Oct 2004	2005 -319-320-409- 2006 -214-296-
AX 70197	May 2003	2004 -864- 2005 -628-629-933- 2006 -347-
AX 70308	May 2003	2004 -476-577-659-779-929- 2005 -53-240-548-820-994-
AX 70309	May 2003	2004 -400-401-476-621-929-984- 2005 -240-277-406-508-639-820-858-
AX 70720	Jul 2005	
AX 70721	Aug 2004	2005 -353-820-
AX 70722	Aug 2004	2004 -697-929-984- 2005 -240-277-359-858-891-994-1068-
AX 70808	May 2003	2004 -391-824- 2005 -445-587-629-932-933-1056- 2006 -38-
AX 72026	Jul 2005	2005 -858-859-892-893-994-996-1068-1069- 2006 -47-81-169-
AX 72309	Jul 2005	2005 -820-858-
AX 72722	Jul 2005	2005 -858-891-994-1068-
AU210140	Jun 2005	2005 -773-855-856-992- 2006 -166-
AU210150	Jun 2005	2005 -1031- 2006 -255-
AU220140	Jun 2005	2005 -682-854-856-
AU220150	Jun 2005	2005 -857-1101-1102-1103- 2006 -44-
AU230140	Jun 2005	
AU230150	Jun 2005	2006 -40-
AU314145	Apr 2005	
AU315146	Apr 2005	
AU318147	Apr 2005	
AU319147	Apr 2005	2005 -937-
AU319148	Apr 2005	
AU320147	Apr 2005	
AU320148	Apr 2005	2005 -931-
AU320149	Apr 2005	2005 -931-
AU322150	Apr 2005	
AU323151	Apr 2005	2005 -936-
AU323152	Apr 2005	
AU324152	Apr 2005	
AU324153	Apr 2005	
AU325153	Apr 2005	
AU410143	Apr 2005	2005 -774-989- 2006 -164-254-
AU410144	Apr 2005	
AU411140	Apr 2005	
AU411141	Apr 2005	2005 -682-982-1104- 2006 -167-

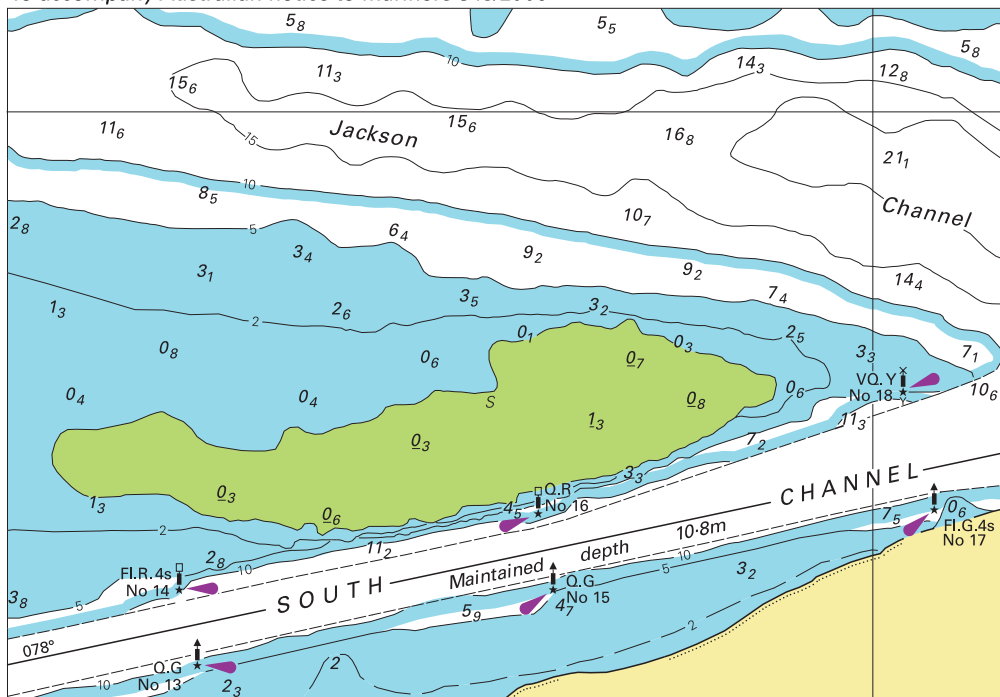
<i>Chart Number</i>	<i>Current Edition</i>	<i>Notices to Mariners affecting the chart from Edition 7 dated 2 April 2004</i>
AU411143	Apr 2005	2005-593-
AU412141	Apr 2005	2006-348-
AU412142	Apr 2005	2005-817-
AU412143	Apr 2005	2005-939-
AU413141	Apr 2005	2005-556-2006-124-
AU413143	Apr 2005	2005-1029-
AU413144	Apr 2005	
AU414143	Apr 2005	2005-931-1028-
AU414144	Apr 2005	
AU415143	Apr 2005	2005-816-
AU415144	Apr 2005	2005-887-1026-1027-
AU415145	Apr 2005	2005-455-
AU416145	Apr 2005	
AU416146	Apr 2005	
AU417145	Apr 2005	2006-78-
AU417146	Apr 2005	
AU418145	Apr 2005	
AU418146	Apr 2005	2005-1063-2006-251-
AU419146	Apr 2005	2005-988-
AU420146	Apr 2005	2005-815-2006-122-
AU420150	Apr 2005	2005-931-
AU421148	Apr 2005	2005-680-814-987-
AU421149	Apr 2005	2005-931-
AU421150	Apr 2005	2005-931-
AU422149	Apr 2005	2005-504-2006-120-121-250-
AU423149	Apr 2005	
AU423150	Apr 2005	
AU424150	Apr 2005	2005-985-2006-218-
AU424151	Apr 2005	2005-503-812-935-1060-
AU425151	Apr 2005	
AU425152	Apr 2005	2005-1058-
AU499142	Apr 2005	2005-728-729-772-817-941-982-1064-1099-2006-252-
AU5XX113	Mar 2006	
AU5XX242	Jul 2005	2005-1025-
AU5XX248	Jul 2005	
AU5XX255	Jul 2005	
AU5XX257	Jul 2005	
AU5XX299	Jul 2005	2006-252-
AU5XX4P1	Jul 2005	2006-348-
AU5X200E	Jan 2006	2006-347-
AU5X200W	Jan 2006	
AU5111X4	Mar 2006	
AU5167X8	Jul 2005	2005-736-1042-
AU5244X5	Jul 2005	2005-812-
AU5247P1	Apr 2005	
AU5247P2	Apr 2005	
AU5250P1	Apr 2005	2005-504-727-2006-121-
AU5250P2	Apr 2005	2006-250-
AU5252P1	Apr 2005	
AU5253P1	Apr 2005	2006-299-
AU5254P1	Apr 2005	
AU5254P2	Apr 2005	2005-813-886-
AU5254P3	Apr 2005	
AU5256P1	Apr 2005	
AU5256P2	Apr 2005	
AU5258P1	Apr 2005	2006-251-
AU5258P2	Apr 2005	
AU5259P1	Apr 2005	
AU5261P1	Apr 2005	
AU5261P2	Apr 2005	
AU5262X4	Jul 2005	
AU5268P1	Apr 2005	
AU5268P2	Apr 2005	
AU5270P1	Apr 2005	
AU5270P5	Apr 2005	
AU5270P6	Apr 2005	

CAUTIONARY AREA

Vessels are to avoid navigating, anchoring or fishing within this area.

Note for chart Aus 349

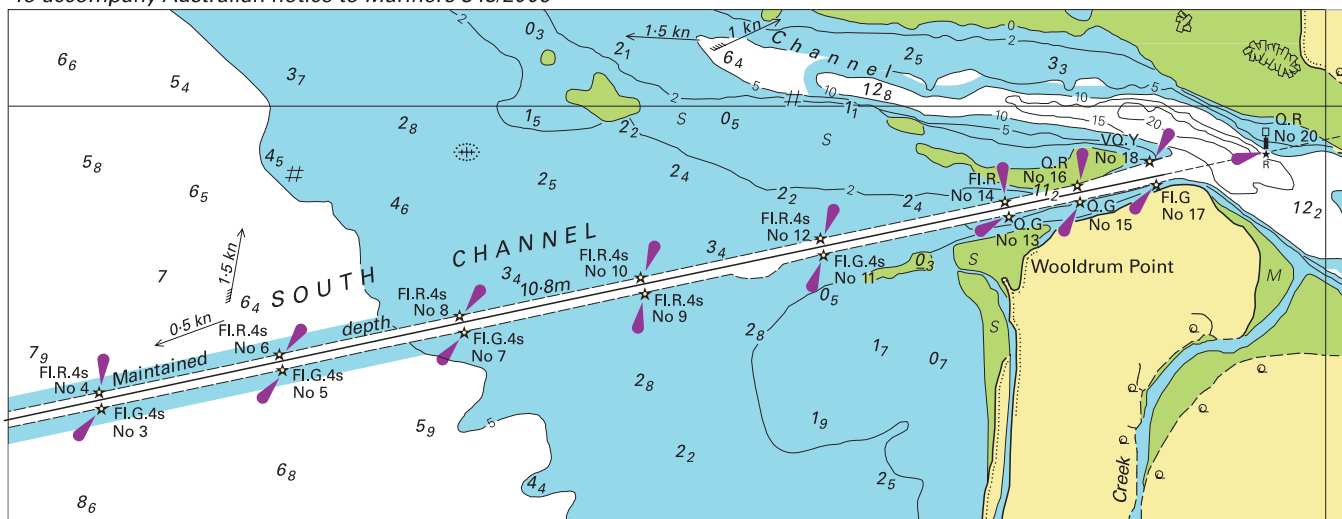
To accompany Australian notice to Mariners 348/2006



Block for chart Aus 4

© Commonwealth of Australia 2006

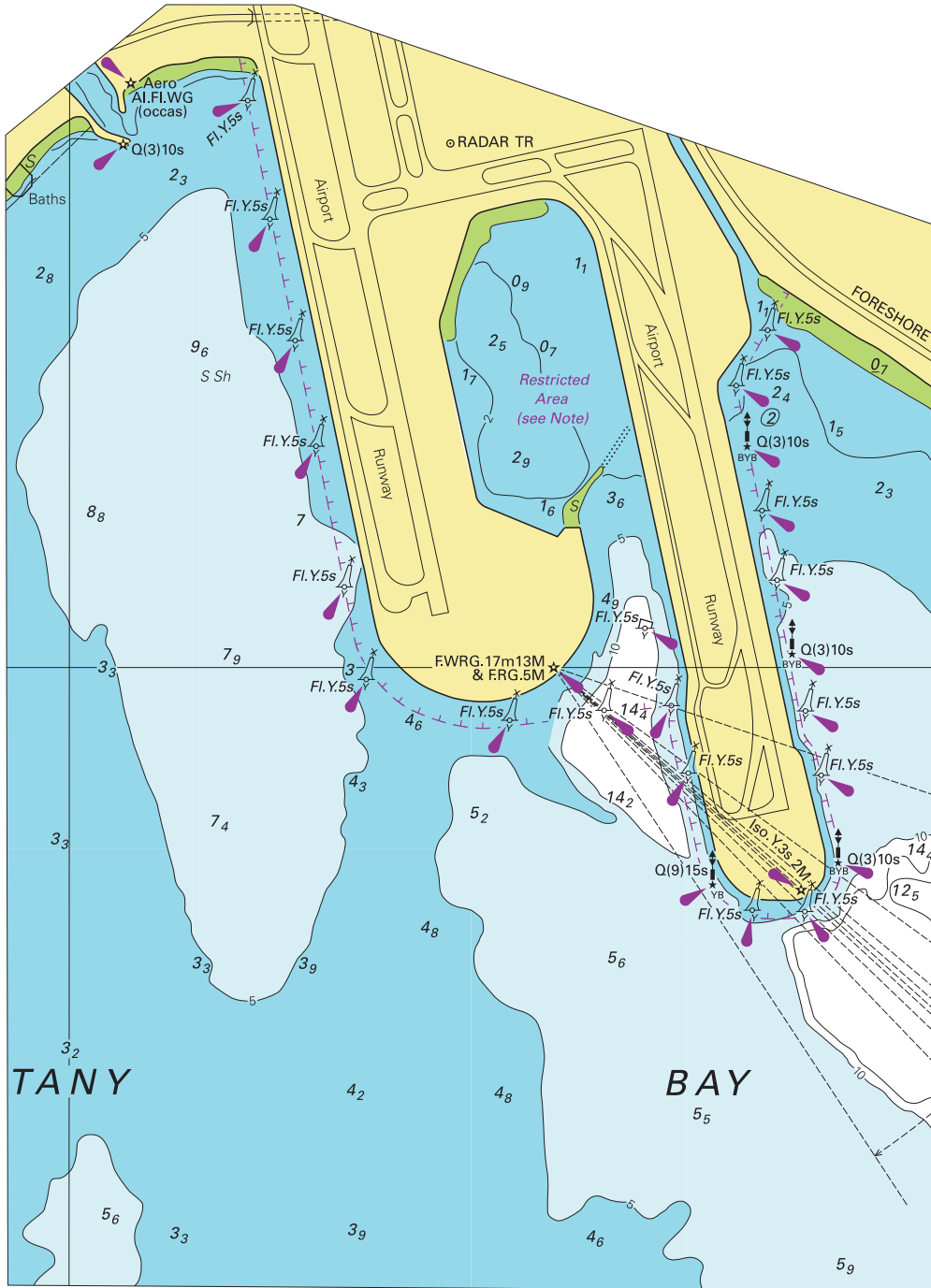
To accompany Australian notice to Mariners 348/2006



Block for chart Aus 4

© Commonwealth of Australia 2006

To accompany Australian Notice to Mariners 346/2006

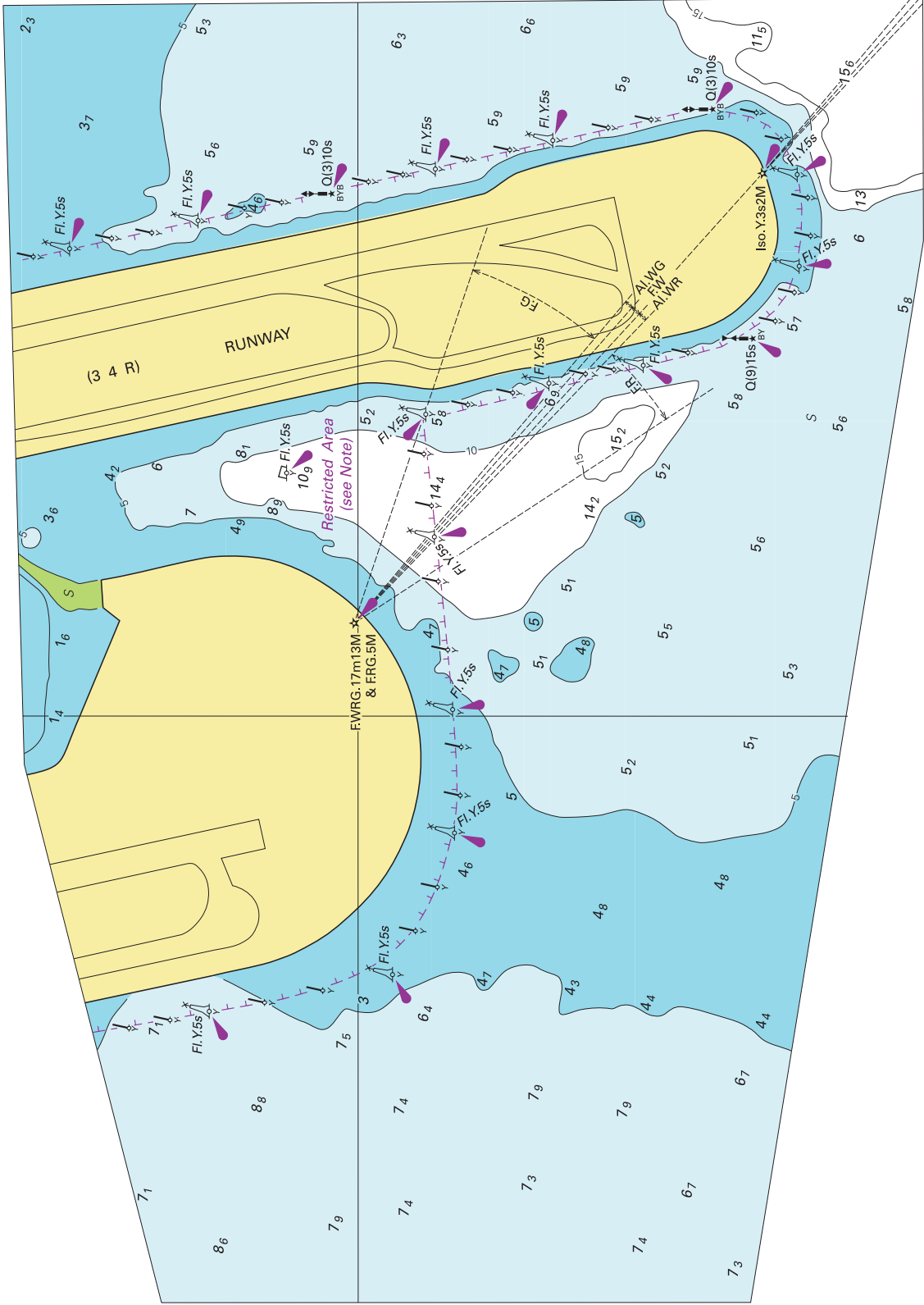


Block for chart Aus 198

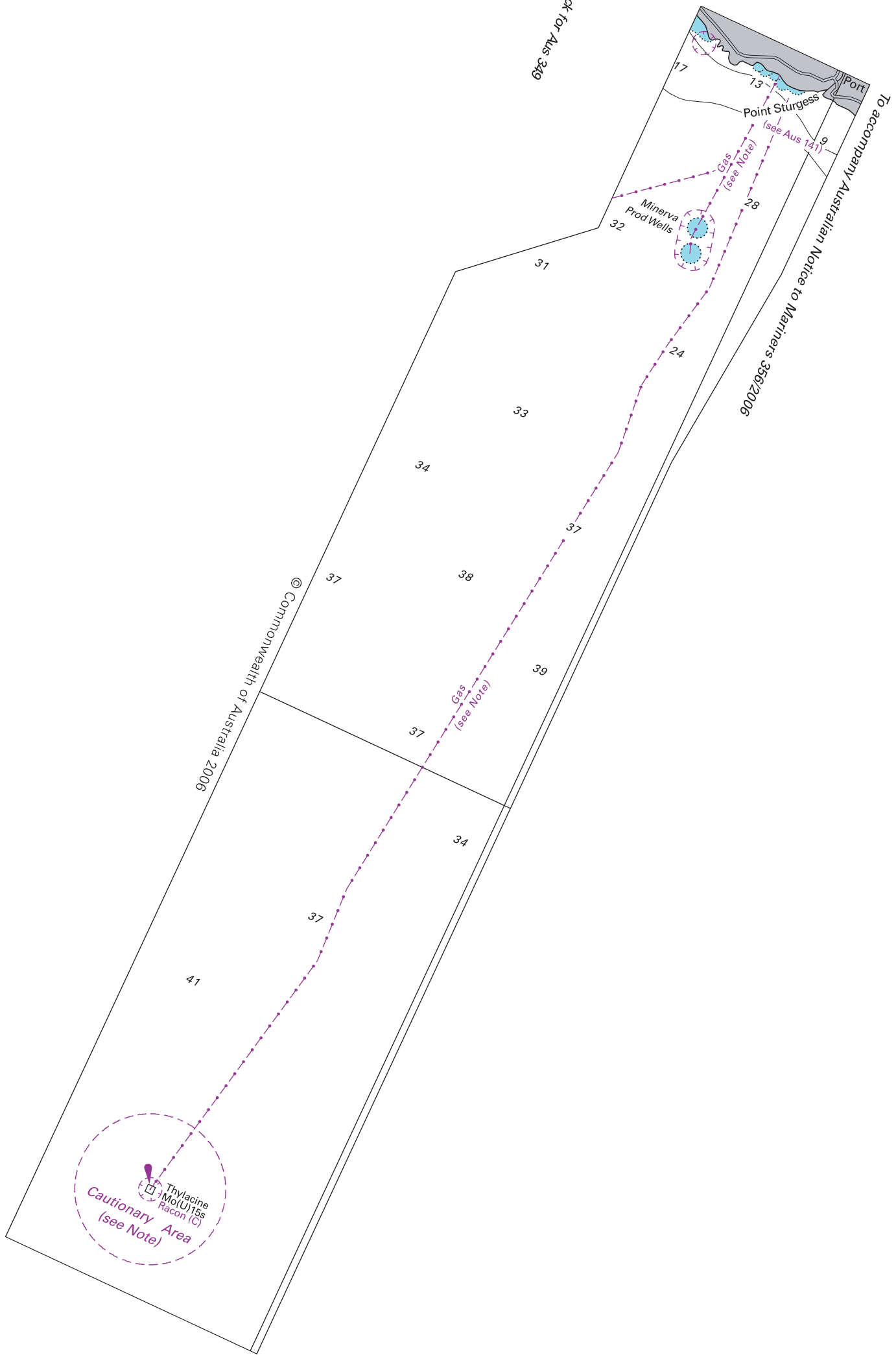
© Commonwealth of Australia 2006



To accompany Australian Notice to Mariners 346/2006



Block for Aus 349



To accompany Australian Notice to Mariners 356/2006

© Commonwealth of Australia 2006

Point Sturgess Port

Minerva Prod Wells

Thylacine Mo(U)1Es Racon (C) Cautionary Area (see Note)

Gas (see Note) (see Aus 141)

41

37

34

37

39

38

37

34

33

31

17

13

9

32

24

28