



Australian Notices to Mariners are the authority for correcting Australian Charts

AUSTRALIAN NOTICES TO MARINERS

© Commonwealth of Australia 2006 - Copyright restrictions apply to Notices to Mariners



Notices 295 - 342

Published fortnightly by the Australian Hydrographic Service

R. NAIRN

Hydrographer of Australia

- SECTIONS.**
- I. Australian Notices to Mariners, including blocks and notes.**
 - II. Amendments to Admiralty List of Lights and Fog Signals, Vol K**
 - III. Navigational Warnings.**
 - IV. Hydrographic Reports.**
 - V. Amendments to Admiralty List of Radio Signals (NP 281(2), 282, 283(2), 285, 286(4))**
 - VI. Amendments to Admiralty Sailing Directions (NP 9, 13, 14, 15, 33, 34, 35, 36, 39, 44, 51, 60, 61, 62, 100, 136)**

[British Admiralty Notices to Mariners](#)

[New Zealand Notices to Mariners](#)

The substance of these notices should be inserted on the charts affected.

Bearings are referred to the true compass and are reckoned clockwise from North; those relating to lights are given as seen by an observer from seaward. Positions quoted in permanent notices relate to the horizontal datum for the chart(s). When preliminary or temporary notices affect multiple charts, positions will be provided in relation to only one horizontal datum and that datum will be specified. When the multiple charts do not have a common horizontal datum, mariners will be required to adjust the position(s) for those charts not on the specified datum. The range quoted for a light is its nominal range. Depths are with reference to the chart datum of each chart. Heights are above mean high water springs or mean higher high water, as appropriate.

The capital letter (P) or (T) after the number of any notice denotes a preliminary or temporary notice respectively, which are contained separately at the end of the permanent notices. A star () adjacent to the number of a notice indicates that the notice is based on original information.*

Mariners are particularly requested to notify the AUSTRALIAN HYDROGRAPHIC SERVICE, Locked Bag 8801 Wollongong, NSW 2500 (Fax 02-4221 8599, e-mail Hydro.NTM@defence.gov.au or, alternatively by filling in and submitting the [Hydrographic Notes](#) forms located on the web site – www.hydro.gov.au), immediately on the discovery of new dangers or suspected dangers to navigation. For changes or defects in aids to navigation notify AusSAR (Fax 02-6230 6868 or email rcaus@amsa.gov.au).

Copies of these notices can be obtained from the AUSTRALIAN HYDROGRAPHIC OFFICE, 8 Station Street, Wollongong; Distributors for the sale of Australian Navigational Products; AHS website www.hydro.gov.au or register for eNotices at www.hydro.gov.au/enotices/enotices.htm.

The Notices may be copied for the purpose of inserting their substance on official charts and other publications. However, any copies of the notices may not be sold for profit.

IMPORTANT NOTICE

This edition of Notices to Mariners includes all significant information affecting AHS products which the AHS has become aware of since the last edition. All reasonable efforts have been made to ensure the accuracy and completeness of the information, including third party information, on which these updates are based. The AHS regards third parties from which it receives information as reliable, however the AHS cannot verify all such information and errors may therefore exist. The AHS does not accept liability for errors in third party information.

This work is copyright. Apart from any use permitted under the Copyright Act 1968, no part may be reproduced by any process, adapted, communicated or commercially exploited without prior written permission from The Commonwealth represented by the Australian Hydrographic Service. Copyright in some of the material in this publication may be owned by another party and permission for the reproduction of that material must be obtained from the owner.

NUMERICAL INDEX OF CHARTS AFFECTED

Edition No 7

31 March 2006

Notices	Aus Chart, INT Chart, ENC Cell, AHP20
295.....	Amendment to Australian Seafarers Handbook AHP 20
296.....	Aus 105, 150, 193, 256, 361, 371, 444, 612, 755, 777, 781, 788, 798, 801, 809, AX 60105, AX 70193
297.....	Aus 191
298.....	Aus 241
299.....	Aus 253, AU5253P1
300.....	Aus 395, 547, 674
301.....	Aus 667
302.....	Aus 387, 388, 4622, INT 622
303.....	Aus 389, 462, 651, 4622, INT 622
304.....	Aus 652
305.....	Aus 303
306.....	Aus 4060, 4071, 4603, INT 60, 71, 603
307.....	Aus 115, 755
308.....	Aus 110
309.....	Aus 776, 777
310.....	Aus 777
311.....	Aus 777, 778
312.....	Aus 137, 780, 781
313.....	Aus 349, 422, 487, 788
314.....	Aus 171
315.....	Aus 355, 795
316(P).....	Aus 359, 360, 805, 806
317(T).....	Aus 191
318(T).....	Aus 201
319(T).....	Aus 814
320(T).....	Aus 235
321(T).....	Aus 235
322(T).....	Aus 242, AU5XX242
323(T).....	Aus 244, 245, 246, AU424151, 5244X5
324(T).....	Aus 249, 250, AU5250P2
325(T).....	Aus 249, 250, AU422149, 5250P2
326(P).....	Aus 280, 374, 833, 4620, INT 620, AU220140, 415143
327(T).....	Aus 6
328(T).....	Aus 26, 28, AX 72026
329(P).....	Aus 323, 415, 733, 4722, INT 722
330(P).....	Aus 323, 324, 415, 4722, INT 722
331(T).....	Aus 57, 58, 59, 327, 741
332(T).....	Aus 57, 58, 59
333(T).....	Aus 328
334(T).....	Aus 328
335(T).....	Aus 64, 743
336(T).....	Aus 111, 117, AX70117
337(T).....	Aus 349
338(T).....	Aus 354, 355
339(T).....	Aus 169, 356
340(T).....	Aus 141
341(T).....	Aus 143, 154, 155, 158
342(T).....	Aus 158

295 AUSTRALIA - Products - Amendment to Australian Seafarers Handbook AHP 20.
AHO (A185674).

Chapter 12 Port Details

page 194 (Tasmanian Ports)

amend third sentence to read *The ports of Hobart, Devonport, Burnie and Launceston are managed by the **Tasmanian Ports Corporation**.*

page 197 (Port Details Table Port of Burnie)

amend operator to *Tasmanian Ports Corp*

amend contact details to *www.tasports.com.au*
burnie@tasports.com.au
+61 3 6421 4911

page 198 (Port Details Table Port of Devonport)

amend operator to *Tasmanian Ports Corp*

amend contact details to *www.tasports.com.au*
secretary@tasports.com.au
+61 3 6421 4911

page 199 (Port Details Table Port of Hobart)

amend operator to *Tasmanian Ports Corp*

amend contact details to *www.tasports.com.au*
hobart@tasports.com.au
+61 3 6235 1000

page 199 (Port Details Table Port of Launceston)

amend operator to *Tasmanian Ports Corp*

amend contact details to *www.tasports.com.au*
bellbay@tasports.com.au
+61 3 6421 4911

page 200 (Port Details Table Port of Newcastle)

insert email contact details *mail@newportcorpcom.au*

296* AUSTRALIA - Miscellaneous correction.

AHO (A185672, A185673).

Aus 105 [798/2003]

Substitute [accompanying note](#) for Military Exercise Area note 30° 52'.0 S 115° 23'.5 E

Aus 150 [176/2006]

Substitute [accompanying note](#) for Military Exercise Area note 38° 19'.5 S 145° 04'.2 E

Aus 193 [214/2006]

Substitute [accompanying note](#) for Military Exercise Area note 35° 06'.4 S 150° 40'.3 E

Aus 256 [122/2006]

Substitute [accompanying note](#) for Military Exercise Area note 19° 17'.1 S 146° 41'.5 E

Aus 361 [809/2005]

Substitute [accompanying note](#) for Military Exercise Area note 33° 23'.0 S 150° 56'.0 E

Aus 371 [937/2005]

Substitute [accompanying note](#) for Military Exercise Area note 20° 20'.0 S 146° 43'.0 E

Aus 444 [51/2006]

Substitute [accompanying note](#) for Military Exercise Area note 32° 51'.0 S 136° 09'.0 E

Aus 612 (plan, Saumarez Reefs) [931/2005]

Substitute [accompanying note](#) for Military Exercise Area note 21° 41'.5 S 153° 24'.0 E

Aus 755 [561/2005]

Insert legend, *MILITARY EXERCISE AREA (see Note)* 32° 22'.5 S 115° 09'.0 E
33° 23'.5 S 114° 56'.0 E

Substitute [accompanying note](#) for Military Exercise Area note 33° 34'.0 S 115° 39'.0 E

Aus 777 [223/2006]

Amend legend to *Port Victoria* 33° 51'.9 S 136° 30'.7 E

Aus 781 [83/2006]			
Substitute	accompanying note for Military Exercise Area note	34° 10'.7 S	138° 29'.6 E
Aus 788 [190/2005]			
Substitute	accompanying note for Military Exercise Area note	38° 27'.3 S	143° 44'.4 E
Aus 798 [628/2005]			
Substitute	accompanying note for Military Exercise Area note	41° 02'.0 S	148° 02'.0 E
Aus 801 [131/2006]			
Substitute	accompanying note for Military Exercise Area note	38° 36'.1 S	145° 59'.5 E
Aus 809 [215/2006]			
Substitute	accompanying note for Military Exercise Area note	32° 59'.0 S	151° 24'.7 E
AX 60105 [NC 16/5/2003]			
Substitute	accompanying note for Military Exercise Area note	30° 52'.0 S	115° 23'.5 E
AX 70193 [214/2006]			
Substitute	accompanying note for Military Exercise Area note	35° 06'.4 S	150° 40'.3 E

297* AUSTRALIA - NEW SOUTH WALES - Ulladulla - Contour.
AHO (A186349).

Aus 191 (plan, Ulladulla) [113/2005]			
Insert	contour to enclose depth 15 ₃ m	35° 21'.424 S	150° 29'.381 E

298* AUSTRALIA - QUEENSLAND - Great Sandy Strait - Light buoys altered.
Maritime Safety Queensland Notice 162/2006 (A187788).

Aus 241 [411/2005]			
Amend	light to <i>Fl. Y. 1.5s</i>	25° 15'.7 S	153° 00'.2 E
		25° 16'.5 S	153° 00'.8 E
		25° 17'.4 S	153° 00'.9 E
		25° 18'.6 S	153° 02'.0 E

299* AUSTRALIA - QUEENSLAND - Shute Harbour - Light buoy altered in position.
Maritime Safety Queensland Notice 156/2006 (A187494).

Aus 253 [NE 27/5/2005]			
Move	port lateral light buoy No 8	20° 17'.57 S	148° 47'.38 E
	to	20° 17'.567 S	148° 47'.425 E
Aus 253 (plan, Shute Harbour)			
Move	port lateral light buoy No 8	20° 17'.57 S	148° 47'.38 E
	to	20° 17'.567 S	148° 47'.425 E

AU5253P1 [NC 29/4/2005]

300* PAPUA NEW GUINEA - New Britain - Numondo Anchorage - Jetty demolished.
HS Blue (HMAS *Melville*) (A186617).

Aus 395 [890/2005]			
Delete	jetty	5° 30'.52 S	150° 06'.08 E
Aus 547 [620/2004]			
Delete	jetty	5° 30'.52 S	150° 06'.08 E
Aus 674 [268/2002]			
Delete	jetty and legend	5° 30'.52 S	150° 06'.08 E

301* PAPUA NEW GUINEA - New Ireland - Kavieng - Buoy.
Nautical Consulting (A134095, A139118, A167261).

Aus 667 [257/2006]

Substitute legend *R*, for legend RW 2° 35'.30 S 150° 47'.51 E

302* PAPUA NEW GUINEA - Karkar Island - Foul ground southwards disproved.
HS Blue (HMAS *Melville*) (A186614).

Aus 387 [890/2005]

Delete danger circle with legend PA 4° 46'.3 S 146° 01'.0 E

Aus 388 [890/2005]

Delete danger circle with legend PA 4° 46'.1 S 146° 01'.0 E

Aus 4622 (INT 622) [890/2005]

Delete danger circle 4° 46'.3 S 146° 01'.0 E

303* PAPUA NEW GUINEA - Muschu Island - Dangerous underwater rock westwards disproved.
HS Blue (HMAS *Melville*) (A186616).

Aus 389 [555/2005]

Delete dangerous underwater rock, enclosed by danger circle,
with legend (ED) 3° 23'.3 S 143° 28'.2 E

Aus 462 [258/2006]

Delete dangerous underwater rock, enclosed by danger circle,
with legend ED 3° 23'.3 S 143° 28'.2 E

Aus 651 [233/2002]

Delete dangerous underwater rock, enclosed by danger circle,
with legend E.D. 3° 23'.3 S 143° 28'.2 E

Aus 4622 (INT 622) [302/2006]

Delete dangerous underwater rock, enclosed by danger circle 3° 23'.3 S 143° 28'.2 E

304* PAPUA NEW GUINEA - Aitape - Jetty ruins.
HS Blue (HMAS *Melville*) (A186613).

Aus 652 [233/2002]

Substitute legend *Ru* for legend Wharf 3° 10'.7 S 142° 25'.8 E

305* AUSTRALIA - QUEENSLAND - Sweers Island - Contour.
AHO (A186685).

Aus 303 (plan, Investigator Road) [46/2006]

Delete contour between	17° 04'.3 S	139° 38'.5 E
	17° 05'.0 S	139° 38'.6 E
	17° 09'.8 S	139° 38'.2 E
magenta line between	17° 10'.1 S	139° 37'.7 E

306 INDONESIA - Flores Sea - Salayar - Depth southwestwards.
British Admiralty Notice 10/1068/2006 (A186164).

Aus 4060 (INT 60) [134/2006]

Substitute depth, 593m, enclosed by contour, for depth 1302m 6° 50'.0 S 119° 59'.0 E

Aus 4071 (INT 71) [861/2005]

Substitute depth, 593m, enclosed by contour, for depth 1302m 6° 50'.0 S 119° 59'.0 E

Aus 4603 (INT 603) [262/2006]

Insert depth, 593m, enclosed by contour 6° 49'.5 S 120° 01'.7 E

Delete depth 1302m 6° 50'.0 S 119° 56'.0 E

307* WESTERN AUSTRALIA - Bunbury - Outfall pipeline southwards.

DPI WA mA107574 (A187500).

Aus 115 [82/2006]

Insert	outfall pipeline between	33° 22'.86 S	115° 36'.54 E
		33° 22'.70 S	115° 36'.08 E

Aus 755 [296/2006]

Insert	outfall pipeline between	33° 22'.93 S	115° 36'.46 E
		33° 22'.77 S	115° 36'.00 E

308* WESTERN AUSTRALIA - King George Sound - Light; groyne.

DPI WA (A184915 - A184917).

Aus 110 [277/2005]

Insert	light, <i>Fl. R. 2s 6M</i>	(a) 35° 05'.726 S	117° 57'.414 E
	continuous line between (a) and	35° 05'.768 S	117° 57'.425 E

309* SOUTH AUSTRALIA - Tumby Bay - Light beacon established.

DPIE SA Notice 11/2006 (A185573).

Aus 776 [129/2006]

Substitute	light beacon, <i>Fl. R. 5s</i> , with port lateral topmark, for beacon	34° 24'.31 S	136° 09'.28 E
------------	---	--------------	---------------

Aus 777 [296/2006]

Substitute	light beacon, <i>Fl. R. 5s</i> , with port lateral topmark, for beacon	34° 24'.40 S	136° 09'.20 E
------------	---	--------------	---------------

310* SOUTH AUSTRALIA - Franklin Harbour - Beacon altered in position.

DPIE SA (A161220).

Aus 777 [309/2006]

Move	east cardinal beacon	33° 44'.0 S	137° 00'.1 E
	to	33° 44'.11 S	137° 00'.48 E

311* SOUTH AUSTRALIA - Spencer Gulf - Depths.

Flinders Ports (mA108640, DHDB 259993), AHO (A181789, A181790).

Aus 777 [310/2006]

Insert	accompanying block, A	34° 00'.0 S	137° 15'.0 E
	accompanying block, B	33° 45'.0 S	137° 27'.0 E

Aus 778 [223/2006]

Insert	accompanying block, A	33° 45'.0 S	137° 27'.0 E
	accompanying block, B	33° 15'.0 S	137° 33'.0 E

Aus 778] (plan, Yarraville Shoal)

Insert	accompanying block, C	33° 15'.0 S	137° 33'.0 E
--------	---------------------------------------	-------------	--------------

312* SOUTH AUSTRALIA - Semaphore - Breakwater; light beacons.

Former Notice - 91(P)/2004 is cancelled
Flinders Ports Pty Ltd (A72378, A125993 - A125996).

Aus 137 [224/2006]

Insert	continuous line between	34° 51'.058 S	138° 28'.373 E
		34° 50'.934 S	138° 28'.377 E

Delete	structure colour	34° 51'.06 S	138° 28'.37 E
		34° 50'.93 S	138° 28'.38 E

Aus 780 [51/2006]

Delete	structure colour	34° 51'.16 S	138° 28'.43 E
--------	------------------	--------------	---------------

Aus 781 [296/2006]

Delete	structure colour	34° 51'.15 S	138° 28'.29 E
--------	------------------	--------------	---------------

Aus 781 (plan, Approaches to Port Adelaide)

Delete	structure colour	34° 51'.15 S	138° 28'.29 E
--------	------------------	--------------	---------------

313* AUSTRALIA - VICTORIA - Cape Otway - Light altered.

List of Lights Vol K/2006 - 2172
AMSA ATH 06/03 (A186611), Auscoast warning 60/2006 (A187517).

Aus 349 [84/2006]

Amend	light to <i>Fl. WR. 10s 239ft 19/15M</i>	38° 51'.4 S	143° 30'.8 E
-------	--	-------------	--------------

Aus 422 [267/2006]

Amend	light to <i>Fl. WR. 19/15M</i>	38° 51'.4 S	143° 30'.8 E
-------	--------------------------------	-------------	--------------

Aus 487 [267/2006]

Amend	light to <i>Fl. WR. 10s 19/15M</i>	38° 51'.4 S	143° 30'.8 E
-------	------------------------------------	-------------	--------------

Aus 788 [296/2006]

Amend	light to <i>Fl. WR. 10s 73m 19/15M</i>	38° 51'.4 S	143° 30'.8 E
-------	--	-------------	--------------

314* AUSTRALIA - TASMANIA - Crayfish Point - Intake pipeline.

Marine and Safety Tasmania Notice M17-06 (A182536, A187532, A187534).

Aus 171 [NC 6/1/2006]

Insert	intake pipeline between	42° 57'.227 S	147° 21'.487 E
		42° 57'.110 S	147° 21'.315 E

315* AUSTRALIA - TASMANIA - Cape Paul Lamanon - Depth.

AHO (A186486).

Aus 355 [277/2005]

Substitute	depth, <i>1₃ fm</i> , enclosed by contour, for dangerous underwater rock and enclosing danger circle	42° 50'.2 S	147° 55'.4 E
------------	---	-------------	--------------

Aus 795 [248/2006]

Substitute	depth, <i>1₃ fm</i> , enclosed by contour, for dangerous underwater rock and enclosing danger circle	42° 50'.2 S	147° 55'.4 E
------------	---	-------------	--------------

316(P)/2006 AUSTRALIA - NEW SOUTH WALES - Montague Island - Light to be altered.

Date - On or about 24 March 2006
List of Lights Vol K/2006 - 2576
ATH 06/04 (A187826).

The light will be altered to *Fl. 15s 262ft 20M.*

Chart which will be affected - Aus 359 - Aus 360 - Aus 805 - Aus 806.

317(T)/2006 AUSTRALIA - NEW SOUTH WALES - Batemans Bay - Shoaling; buoy.

Maritime Authority NSW (A187776, A187777).

Shoaling, marked by a special spar buoy, exists inside and to the east of the entrance of the marina, in vicinity of 35° 42'.88 S 150° 11'.39 E.

Mariners are advised to navigate with caution in the area.

Chart temporarily affected - Aus 191.

318(T)/2006 AUSTRALIA - NEW SOUTH WALES - Port Jackson - Hunters Bay - Scientific instrument recovered.

Former Notice - 227(T)/2006 is cancelled
HMAS *Penguin* (A184244).

Cancel this notice on receipt.

Chart formerly affected - Aus 201.

319(T)/2006 AUSTRALIA - QUEENSLAND - Moreton Island - Live firing eastwards completed.

Former Notice - 229(T)/2006 is cancelled
RAAF (A181628).

Cancel this notice on receipt.

Chart formerly affected - Aus 814.

320(T)/2006 AUSTRALIA - QUEENSLAND - Mooloolaba - Harbour works.

Former Notice - 1079(T)/2005 is cancelled
Maritime Safety Queensland Notice 140(T)/2006 (A186127).

Harbour works, marina construction, are in progress in the vicinity of 26° 41'.3 S 153° 07'.7 E.

Mariners are advised to navigate with caution in the area.

Chart temporarily affected - Aus 235.

321(T)/2006 AUSTRALIA - QUEENSLAND - Mooloolaba - Light buoys withdrawn.

Former Notice - 140(T)/2006 is cancelled
Maritime Safety Queensland Notice 140(T)/2006 (A186127).

Cancel this notice on receipt.

Chart formerly affected - Aus 235.

322(T)/2006 AUSTRALIA - QUEENSLAND - Bundaberg - Burnett River - Middle Reach - Dredging operations.

Former Notice - 272(T)/2006 is cancelled
Maritime Safety Queensland Notice 163(T)/2006 (A187789).

Dredge *John G Francis* is operating on the southern batter of the channel.

The dredge may be contacted on VHF Ch 12.

Mariners are advised to navigate with caution in the area.

Chart temporarily affected - Aus 242 - AU5XX242.

323(T)/2006 AUSTRALIA - QUEENSLAND - Gladstone - Depth information.

Former Notice - 273(T)/2006 is cancelled
Maritime Safety Queensland Notice 141(T)/2006, (A186125).

Available depths as at 10 January 2006:

	<i>Metres</i>	<i>Remarks</i>
Sea Channels:		
Wild Cattle Cutting	16.3	
Boyne Island Cutting	16.3	
Boyne Island Extension Channel	9.0	
Golding Cutting	16.3	
South Bypass Channel	7.3	** Except in vicinity of S10 light beacon where depth is reduced to 6.3 metres.
Gatcombe Channel	16.3	
Gatcombe Bypass Channel	12.5	
Inner Channels:		
Auckland Channel	15.8	
Auckland Bypass Channel	6.8	
Barney Point Eastern Approach	13.5	
Barney Point Western Approach	11.5	
Clinton Channel	16.0	
Clinton Bypass Channel	10.6	
Clinton Swing Basin	10.4	
Targinnie Channel	10.6	
Targinnie Swing Basin East	10.6	
Targinnie Swing Basin West	9.0	
Berths:		
Boyne Smelter Wharf	15.0	
South Trees East Wharf	12.8	
South Trees West Wharf	12.8	
Barney Point Wharf	15.0	
Auckland Point No 1 Wharf	11.3	
Auckland Point No 2 Wharf	11.3	
Auckland Point No 3 Wharf	11.3	
Auckland Point No 4 Wharf	11.4	
Clinton No 1 Wharf	18.8	
Clinton No 2 Wharf	18.8	
Clinton No 3 Wharf	18.8	
Fishermans Landing Wharf No 2	12.9	
Fishermans Landing Wharf No 4	11.2	
Fishermans Landing Wharf No 5	11.2	

* Indicates revised entry.

Note: ** Notice to Mariners 275(T)/2006 refers.

Chart temporarily affected - Aus 244 - Aus 245 - Aus 246 - AU424151 - AU5244X5.

324(T)/2006 AUSTRALIA - QUEENSLAND - Hay Point - Tug and barge operations completed.

Former Notice - 142(T)/2006 is cancelled
Maritime Safety Queensland Notice 143/2006 (A186119).

Cancel this notice on receipt.

Chart formerly affected - Aus 249 - Aus 250 - AU5250P2.

325(T)/2006 AUSTRALIA - QUEENSLAND - Hay Point - Depth information.

Former Notice - 231(T)/2006 is cancelled
Maritime Safety Queensland Notice 171(T)/2006 (A187919).

Available depth as at 9 March 2006:

	<i>Metres</i>
HPS Berth No 1	16.5
* HPS Berth No 2	16.7
DBCT Berth No 1	18.1
DBCT Berth No 2	18.0
DBCT Berth No 3	18.9

* Indicates revised entry.

Chart temporarily affected - Aus 249 - Aus 250 - AU422149 - AU5250P2.

326(P)/2006 AUSTRALIA - QUEENSLAND - Eden Reef - Racon to be discontinued.

Date - On or about 30 April 2006
AMSA (A188165).

The racon ALRS 88210 (14° 04'.7 S 143° 55'.0 E) will be discontinued.

Chart which will be affected - Aus 280 - Aus 374 - Aus 833 - Aus 4620 - AU220140 - AU415143.

327(T)/2006 AUSTRALIA - QUEENSLAND - Karumba - Light beacon destroyed.

Maritime Safety Queensland Notices 149(T)/2006 (A186409) & 187(T)/2006 (A188481).

K17 light beacon (17° 26'.706 S 140° 46'.908 E) has been destroyed, a starboard lateral light buoy *Fl. G. 2s* exists in situ.

Chart temporarily affected - Aus 6.

328(T)/2006 AUSTRALIA - NORTHERN TERRITORY - Darwin - Pipeline; pumping stations.

Date - Until 30 June 2006

Former Notice - 878(T)/2005 is cancelled
Port of Darwin Notice 3/2006 (A186217).

A submerged pipeline, marked with special light buoys, Q. Y, exists between approx positions 12° 27'.8 S 130° 51'.0 E and 12° 29'.1 S 130° 53'.5 E.

Pumping stations exist in positions:

12° 28'.32 S 130° 51'.86 E

12° 28'.67 S 130° 52'.69 E

Anchoring within 100 metres of the pipeline is prohibited.

Chart temporarily affected - Aus 26 - Aus 28 - AX 72026.

329(P)/2006 WESTERN AUSTRALIA - Cape Leveque - Racon to be discontinued.

Date - On or about 30 June 2006
AMSA (A188165).

The racon ALRS 87210 (16° 23'.8 S 122° 55'.7 E) will be discontinued.

Chart which will be affected - Aus 323 - Aus 415 - Aus 733 - Aus 4722.

330(P)/2006 WESTERN AUSTRALIA - East Island to Red Bluff - Racons to be discontinued.

Date - On or about 30 April 2006
AMSA (A188165).

The racons ALRS 87240 (17° 03'.5 S 122° 19'.0 E) and ALRS 87260 (15° 54'.2 S 122° 11'.8 E) will be discontinued.

Chart which will be affected - Aus 323 - Aus 324 - Aus 415 - Aus 4722.

331(T)/2006 WESTERN AUSTRALIA - Dampier - Star Rock - Underwater blasting operations.

Date - Until 14 July 2006

Port of Dampier Marine Notice 9/2006 (A187951).

Sirius is conducting drilling operations for underwater blasting in vicinity of 20° 34'.96 S 116° 45'.34 E (WGS 84 datum).

A 700 metre exclusion zone exists, centred on this position.

DPA advises Port shipping on VHF Ch 11 prior to blasting.

Mariners are advised to navigate with caution in the area.

Chart temporarily affected - Aus 57 - Aus 58 - Aus 59 - Aus 327 - Aus 741.

332(T)/2006 WESTERN AUSTRALIA - Dampier - Drilling operations.

Date - Until 15 April 2006

Port of Dampier Marine Notice 8/2006 (A187820).

Sideson 1 is conducting drilling operations between 20° 36'.15 S 116° 45'.20 E and 20° 33'.65 S 116° 42'.25 E (WGS 84 datum).

The rig maintains a listening watch on VHF Ch 11 and displays a flashing white light.

Mariners are advised to navigate with caution in the area.

Chart temporarily affected - Aus 57 - Aus 58 - Aus 59.

333(T)/2006 Rankin Bank - Scientific instrument northwestwards recovered.

Former Notice - 99(T)/2006 is cancelled

MetOcean (A186228).

Cancel this notice on receipt.

Chart formerly affected - Aus 328.

334(T)/2006 WESTERN AUSTRALIA - Barrow Island - Scientific instrument eastwards recovered.

Former Notice - 843(T)/2005 is cancelled

MetOcean (A186228).

Cancel this notice on receipt.

Chart formerly affected - Aus 328.

335(T)/2006 WESTERN AUSTRALIA - Onslow - Scientific instruments westward.

Date - Until 30 January 2007

Former Notice - 205(T)/2006 is cancelled

MetOcean (A186228).

Scientific instruments exist as follows:

Position (WGS 84 datum)	Remarks
21° 38'.56 S 115° 03'.46 E	Fl(5) Y. 20s
21° 38'.69 S 115° 03'.44 E	5 white poly floats
21° 38'.24 S 115° 03'.46 E	5 white poly floats

Chart temporarily affected - Aus 64 - Aus 743.

336(T)/2006 WESTERN AUSTRALIA - Garden Island - Light unlit.

List of Lights Vol K/2006 - 1780.7

HMAS *Stirling* (A187833).

The light (32° 13'.58 S 115° 42'.02 E) is unlit.

Chart temporarily affected - Aus 111 - Aus 117 - AX 70117.

337(T)/2006 AUSTRALIA - BASS STRAIT - Port Campbell - Scientific instruments southwards recovered.

Former Notice - 921(T)/2005 is cancelled

MetOcean (A186228).

Cancel this notice on receipt.

Chart formerly affected - Aus 349.

338(T)/2006 AUSTRALIA - TASMANIA - Tasman Island - Scientific instrument southsoutheastwards recovered.

Former Notice - 68(T)/2006 is cancelled

Marine and Safety Tasmania (A187799, A188142).

Cancel this notice on receipt.

Chart formerly affected - Aus 354 - Aus 355.

339(T)/2006 AUSTRALIA - TASMANIA - St Helens - Shoaling.

Former Notice - 315(T)/2005 is cancelled
Marine and Safety Tasmania (A188071).

Cancel this notice on receipt.

Chart formerly affected - Aus 169 - Aus 356.

340(T)/2006 AUSTRALIA - VICTORIA - Apollo Bay - Harbour works.

Date - Until 1 June 2006
Victorian Notice 35/2006 (A186410).

Harbour works, marked by flashing lights, are in progress in vicinity of 38° 45'.5 S 143° 40'.6 E.

Mariners are advised to navigate with caution in the area.

Chart temporarily affected - Aus 141.

341(T)/2006 AUSTRALIA - VICTORIA - Port Phillip - Geotechnical investigations.

Date - Until 5 May 2006
Former Notice - 293(T)/2006 is cancelled
Victorian Notice 39(T)/2006 (A187506).

Barge *Jub 2* and work boat *Taurus*, are undertaking geotechnical investigations within the Yarra River, Williamstown Channel, Port Melbourne spoil ground and 2.5M NW of Balcombe Point.

Information can be obtained from Harbour Control on VHF Ch 12 or phone 9644 9700 or *Jub 2* on VHF Ch 12 or phone 0408 330 593.

Mariners are advised to navigate with caution in the area.

Chart temporarily affected - Aus 143 - Aus 154 - Aus 155 - Aus 158.

342(T)/2006 AUSTRALIA - VICTORIA - Port Phillip - Mount Martha - Light buoys damaged; buoys.

Victorian Notice 43(T)/2006 (A188057).

The light buoys in position 38° 13'.928 S 145° 01'.059 E and 38° 14'.415 S 145° 01'.046 E are damaged; white conical buoys exist in situ.

Chart temporarily affected - Aus 158.

II

AMENDMENTS TO ADMIRALTY LIST OF LIGHT AND FOG SIGNALS VOLUME K 2006/07

Edition No 7 dated 31 March 2006.

Last Amendment: Edition No 6 dated 17 March 2006

0801	- West Island. No 5	7 14-9 72 23-1	Fl(2) G 5s	10	6	Orange and black chequered ◊ on silver framework tower	Reported Fl(2) W 5s 2006
							*
1258-13	-	8 09-77 114 26-13	Fl W 5s	23	12	White beacon	
*	*	*	*	*	*	*	*
1690-35	- Sea Buoy	20 25-46 116 42-95	Q(4) Y 6s	Yellow conical buoy	AIS. Racon
			*				*
1885-7	- Wharf	34 43-16 135 52-02	Fl R 2s				
*	*	*	*	*	*	*	*
2438	- STONY POINT. Ldg Lts 288°. Jetty. Head. Front	38 22-30 145 13-53	F Bu	4	3	Post	
		*	*				*
2438-1	--- Rear. 0-5M from front	38 22-14 145 12-84	F Bu	10	3	Post	
		*	*				*
2869-3	- Entrance. E side	27 19-76 153 10-27	Fl R 2-5s	Red ◻ on beacon	
							*
2880-8	-- WNW	27 25-1 153 13-2	Q(9) W 15s	∇ on yellow beacon, black band	
							*
2958-741	<i>Remove from List</i>						
2959-96	-- No 41	24 49-33 152 22-22	Fl G 6s	Green △ on beacon	
*	*	*	*	*	*	*	*
2979	- East Channel. E2	23 51-94 151 24-17	Fl R 2-5s	◻ on red beacon	TE 2006
							*
3304-381	-- Middle Channel. Elbow Bank Reach Ldg Lts 264°33'. Rear	17 26-75 140 44-81	Dir Iso W 2s	...	6	White ∇ on metal framework tower on black metal pile with platform	Vis 261-55°-267-55°(6°). TE 2006
-----		...	Fl(2) W 4s	...	5	Same structure	<i>fl 0-5, ec 1, fl 0-5, ec 2.</i> Not visible on leading line
							*
3329-7	- Wickham Point LNG Jetty. S. Lts in line 072-2°. Front	12 31-52 130 51-78	F Bu	Beacon	
	*	*					*
3329-8	---- Rear	12 31-55 130 51-69	F Bu	Beacon	
	*	*					*
3621-2	Norfolk Bay. Smooth Island	42 56-84 147 46-11	Fl(3) W 6s	45	6	White framework tower	
		*	*				*

II

Volume K *continued*

3636-7	- Simmonds Point. NE	43 06-57 147 16-54	Fl Y 3s	Yellow beacon	
*	*	*	*	*	*	*	*
3636-71	---	43 06-59 147 16-66	Fl Y 3s	Yellow beacon	
*	*	*	*	*	*	*	*
3636-72	---	43 06-80 147 16-55	Fl Y 3s	Yellow beacon	
*	*	*	*	*	*	*	*
3716-699	Sinclair Point. Ldg Lts 287°. Temporary Front	35 49-78 174 28-80	Fl W 2-5s	5	5	Orange and white beacon	(P) 2006
							*
3716-7	Sinclair Point. Ldg Lts 287°. Temporary Rear	35 49-53 174 27-91	F R	8	5	Orange □ on pile 4	Neon □. Vis 200°-340°(140°). (P) 2006
							*
4227-7	-- No 4	41 15-81 173 15-75	Iso R 2s	2	...	Pile	Removed; unlit buoy in situ (T) 2006
		*					*
4668	- Syria (Nasilai Reef)	18 07-9 178 41-5	LF1(2) W 30s	14	12	White square tower, red bands 16	<i>fl 2, ec 2, fl 2, ec 24</i>
							*
4722-1	---- Rear. 250m from front	17 40-8 178 50-2	F G	30	11	Mast	Neon □
							*
4834	- Cap des Pins	21 03-4 167 27-5	Fl(2+1) W 15s	90	15	White pylon, black top 30	<i>fl 0-1, ec 2-5, (fl 0-1, ec 6-1) x 2</i>
							*
4969-665	--	16 44-32 151 02-60	Q R	3	3	Red □ on red beacon 5	
							*
4969-67	--	16 44-92 151 02-75	VQ(9) W 10s	3	3	∇ on yellow beacon, black band 9	
							*
4969-675	--	16 45-46 151 02-83	Fl R 2-5s	3	3	Red □ on red beacon 10	<i>fl 0-5</i>
							*
4969-68	--	16 46-21 151 02-62	Q R	3	3	Red □ on red beacon 7	
							*
4969-682	--	16 46-5 151 02-4	Fl R 2-5s	2	3	Red □ on red beacon 8	<i>fl 0-5</i>
							*
4969-684	--	16 46-7 151 02-0	VQ(9) W 10s	3	3	∇ on yellow beacon, black band 7	
							*

II

Volume K *continued*

4983-147	-- Teaire (Teare)	16 30-0 151 46-1	VQ(9) W 10s	3	5	∇ on yellow beacon, black band 8		*
4988	- Motu Mahere Honaē	14 55-2 147 51-1	F1 W 5s	31	20	White pylon 28	<i>fl 0-1</i>	*
5006-7	- Pointe Kureru. NE. Ldg Lts 005°06'. Front	23 05-9 134 57-1	F1 G 4s	6	6	White □ on white column on concrete base 7	<i>fl 1</i>	*
5055	- Hakahau. Breakwater. Head	9 21-4 140 02-8	F1 R 2-5s	7	4	White metal column 5	<i>fl 0-5</i>	*

III

NAVIGATION WARNINGS

The following radio messages have been received during the period to 17 March 2006. Signal copies of these messages may be destroyed. It is recommended that the reprint of Navigational Warnings should be kept in a file or a book divided into areas. Cancellation should be made on receipt of signals and reprints.

Rigs on location other than those listed in the latest Section III summary are the subject of Radio Navigational Warnings. Rigs in transit will not be the subject of Warnings.

AUSCOAST WARNING

- 058 NW Coast. Drill rig *Jack Bates* in position 21° 30'.1 S 113° 57'.9 E. 2.5M clearance requested.
- 059 Cancelled.
- 060 SE Coast. Cape Otway light K2172 (38° 51'.5 S 143° 30'.6 E) altered to *Fl. WR. 10s 19/15M.*
- 061 Cancelled.
- 062 Cancelled.
- 063 SE Coast. Seismic SV *Pacific Sword* towing 4M cable in area 12° 30' S to 14° 30' S and 121° 00' E to 123° 00' E. 1M clearance requested.
- 064 SE Coast. Seismic SV *Southern Supporter* conducting underwater operations in area 38° 30' S 147° 18' E to 39° 28' S 147° 02' E to 41° 00' S 146° 54' E.
- 065 Cancelled.
- 066 NW Coast. Drill rig *Sedco 703* in position 19° 41'.8 S 115° 53'.2 E. 2.5M clearance requested.
- 067 Cancelled.
- 068 S Coast. Cape Dombey light K2123 (37° 09'.4 S 139° 44'.7 E) unlit.

NAVAREA X WARNINGS

Nil issued.

Navigational warnings in force as at 160001UTC MAR 06.

Auscoast

028 044 046 050 051 054 056 057 058 060 063 064 066 068.

Navarea X

001.

Summary of mobile drilling rigs as at 160001UTC MAR 06.

Name	Position
Stena Clyde	12° 22'.8 S 124° 16'.5 E
Ocean Bounty	12° 32'.5 S 124° 26'.6 E
Ensco 106	19° 28'.6 S 116° 53'.6 E
Sedco 703	19° 41'.8 S 115° 53'.2 E
Atwood Eagle	19° 54'.7 S 115° 09'.7 E
Jack Bates	21° 30'.1 S 113° 57'.9 E
Ensco 67	29° 27'.0 S 114° 52'.2 E
Maersk Guardian	39° 14'.2 S 142° 54'.1 E
Ocean Patriot	38° 17'.6 S 148° 42'.2 E

NAVAREA X WARNINGS

005 Cancelled.

Navarea XIV warnings in force as at 160001UTC MAR 06.

2005 066 070.

HYDROGRAPHIC REPORTS

Locality	Report	Ship/Authority	Observer
QLD- Cape Flattery Moreton Bay Cairns Reef Undine Reef	Radio tower Pole Wreck Light	HMAS <i>Arunta</i> HMAS <i>Shepparton</i>	

AMENDMENTS TO ADMIRALTY LIST OF RADIO SIGNALS 2006

Edition No 7 dated 31 March 2006

VOLUME 1, PART 2, NP 281(2), 2005/06

Published BA Wk 26/05

(Last Amendments: Edition No 4 dated 17 February 2006)

MARITIME RADIO STATIONS

Page 136, after **GUYANA** entry insert new section:

GUYANE FRANÇAISE

MRSC CAYENNE (CROSSAG)

4°55'N 52°18'W



+594 594 304444



+594 594 395589

TELEX: (CROSSAG) +298 910303

E-MAIL: marine.guyane@wanadoo.fr

Inmarsat C (AOR-W) 422799191=ETAT X
(AOR-E) 422799221=MARI X
Inmarsat mini M (AOR-W) 763828583

NOTE: Associated with MRCC Fort-de-France which is located on Martinique and is the Centre Régionaux Opérationnel de Surveillance et de Sauvetage aux Antilles-Guyane (CROSSAG) This station does not accept public correspondence; accepting Distress, Urgency and Safety traffic only

VHF

Ch 16

H24

Transmits

Receives

Hours of Watch

RT (MF)

2182

2182

H24

MRSC Cayenne Ad10/06

Page 193, **MARTINIQUE (France), FORT-DE-FRANCE (MRCC)**, delete and replace by:

MRCC FORT-DE-FRANCE (CROSSAG)

14°37'·06N 61°05'·13W

Diagram page 50



+596 596 709292



+596 596 632450

CALL: MRCC Fort-de-France (In English) CROSSAG (In French)

E-MAIL: fortdefrance.mrcc@equipement.gouv.fr
mrcc.fortdefrance@wanadoo.fr

TELEX: (CROSSAG) +298 912008

Inmarsat C (AOR-W) 422799024=COSM X
(AOR-E) 422799244=OSEC X
Inmarsat mini M (AOR-W) 763913648

MRCC Fort-de-France is located on Martinique and is the Centre Régionaux Opérationnel de Surveillance et de Sauvetage aux Antilles-Guyane (CROSSAG). CROSSAG is responsible for co-ordination of Search and Rescue cases within its SRR in the West Indies, Guyane Française and the North Atlantic. Assisted by MRSC Cayenne, Guyane Française.
This station does not accept public correspondence; accepting Distress, Urgency and Safety traffic only.

(Continued on next page)

VHF

Guadeloupe		
Basse-Terre (Piton Ste Rose)	Ch 16 68 80	16°20'·03N 61°45'·42W
Basse-Terre (Morne á Louis)	Ch 16 67 79	16°11'·35N 61°44'·77W
Basse-Terre (Vieux Fort)	Ch 16 68 80	15°57'·52N 61°45'·83W
Marie-Galante (Beauregard)	Ch 16 73 64	15°53'·95N 61°15'·43W
Martinique		
Le Marin (Morne Acca)	Ch 16 67 79	14°27'·45N 60°54'·28W
Bellefontaine (Morne Capot)	Ch 16 68 80	14°41'·18N 61°08'·78W
Grand Rivière (Beauséjour)	Ch 16 67 79	14°52'·23N 61°11'·55W
Caravelle (Morne Pavillon)	Ch 16 68 80	14°45'·18N 60°54'·95W
Saint Martin		
Pic Paradis	Ch 16 73 64	18°04'·50N 63°03'·00W
HOURS OF WATCH: Ch 16: H24		

	Transmits	Receives	Hours of Watch
--	-----------	----------	----------------

RT (MF)

Distress and Safety			
	2182	2182	H24
	2545		

(former amendment Ad34/05)
MRCC Fort-de-France Ad10/06

VOLUME 2, NP 282, 2006/07

Published BA Wk 7/06

(Last Amendments: Edition No 6 dated 17 March 2006)

RADAR BEACONS

Page 23, **UNITED KINGDOM** section, insert:

Lady Isle Lt Racon 55°31'·63N 4°44'·05W **50600**
(3 & 10 cm) 360° 11 - 13 n miles **T**
Northern Lighthouse Board Notice 5/06 Ad10/06

Page 79, **TAIWAN** section, delete entry:

80850 Wen-kan Tui Lt

Taiwanese Notice 16/06 Ad11/06

Page 86, **CHINA** section, insert:

Wangpan Yang, Lt Buoy K22 Racon 30°41'·39N 121°37'·00E **81776**
M

Chinese Notice 26/557/05 Ad10/06

Insert:

Haizhou Wan, Quinshan Dao Lt Racon 34°52'·20N 119°16'·75E **81984**
Q

UKHO Chart 1253 Ad11/06

Page 123, **VENEZUELA** section,

94780 Monjes del Sur Lt

Delete entry and replace by:

Monjes del Sur Lt Racon 12°21'·55N 70°54'·37W **94780**
(3 & 10 cm) 10 n miles **Y**

Venezuelan Notice 7/06 Ad11/06

Page 126, **UNITED STATES (Gulf Coast)** section, insert:

Galveston Approach, Lt Buoy GB Racon 29°14'·72N 94°32'·68W **95805**
G

US Notice 8/11340/06 Ad10/06

Page 135, **GREENLAND (Denmark)** section, insert:

Fiskefjord Approach Racon 64°40'·28N 52°11'·00W **99290**
(3 & 10 cm) **T**

Danish Notice 5/239/06 Ad10/06

(Last Amendments: Edition No 6 dated 17 March 2006)

A new edition of this volume is in the press and will be published shortly

SAFETYNET

Page 19, **EGC SAFETYNET SYSTEM**, Transmission schedule for full GMDSS service table, delete NAV/MET AREA IV entry and replace by:

IV	USA	1000, 2200 (1200 Ice reports N Atlantic)	USA	0430, 1030, 1630, 2230	AOR-W
----	-----	---	-----	------------------------	-------

(former amendment Ad7/06)
USCG Ad11/06

ICE REPORTS

Page 308, **International Ice Patrol Information Services** table, delete and replace by:

International Ice Patrol Information Services

MARITIME BROADCASTS (See the appropriate station entry for full broadcast details)		
Stations	Broadcast Times (UTC)	Frequencies
NAVTEX		
Boston [F] (USCG)	0045 0445 0845 1245 1645 2045	518 kHz
	Special broadcast during next available time slot	
Saint John's [O] (Canadian CG)	1820 (winter) 2220 (summer)	
RADIO TELEX / SITOR		
Boston (USCG) (NIK via NMF)	0030	6314 8416.5 12579 kHz
	1218	8416.5 12579 16806.5 kHz
RADIO FACSIMILE		
Boston (USCG) (NIK via NMF)	0438 1600 1810	6340.5 9110 12750 kHz
Offenbach (Main) / Pinneberg (See ALRS 3(1))	0930 2100	3855 7880 13882.5 kHz
RADIO TELEPHONE		
Saint Anthony (Canadian CG)	0107 0907 1907	2598 kHz
	Continuous broadcast	VHF Ch 21B 83B
Saint John's (Canadian CG)	0007 0837 1637 2207 & as required	2598 kHz
	Continuous broadcast	VHF Ch 21B 26B 83B
Inmarsat C, SafetyNET		
AOR-E and AOR-W	1200	Inmarsat C SafetyNET
	Special broadcasts of targets outside limits sent upon receipt	
WORLD WIDE WEB		
International Ice Patrol	Updated daily by 1200	http://www.uscg.mil/lantarea/iip/home.html
National Weather Service	Updated daily by 1200	http://weather.noaa.gov/pub/fax/PIEA88.gif
Automated Weather Network		
Joint Air Force & Army Weather Information Network (JAAWIN)	updated daily by 1200	Header: STNT41 KNIK
Facsimile charts on demand		
Fax on demand	Updated daily by 1200	Fax: 1 860 4412773
E-mail on demand	Updated daily by 1200	ftpmail@weather.noaa.gov

(former amendment Ad7/06)
USCG Ad11/06

(Last Amendments: Edition No 6 dated 17 March 2006)

Page 196, **Chapter 11: HF DSC, LIST OF COAST STATIONS FOR SEA AREAS A3 AND A4, Vietnam**, delete section and replace by:

Vietnam

Da Nang	005742030	6 & 8 MHz	Operational (MRCC Da Nang)
Hai Phong	005741040	4,6,8,12 & 16 MHz	Operational (MRCC Hai Phong)
Ho Chi Minh-Ville	005743030	4,6,8,12 & 16 MHz	Operational (MRCC Vung Tau)
Nha Trang	005742080	6 MHz	Operational (MRCC Da Nang)
Vung Tau	005743020	6 MHz	Operational (MRCC Vung Tau)

(former amendment Ad50/05)
VISHIPEL Ad10/06

Page 230, **Chapter 14: MARITIME SAFETY INFORMATION, NAVAREA III (Spain), National Co-ordinators table**, delete and replace by:

National Co-ordinators

COUNTRY	TELEPHONE	FACSIMILE	TELEX	E-MAIL
Albania	+355 522868	+355 522868		
Algeria	+213 21 864999	+213 21 861182		shfn@shfn.dz
Bulgaria	+359 2 9492319	+359 2 9300920	+67 77385	bma@marad.bg radio@navbul.com
Croatia	+385 21 361840	+385 21 347242		office@hhi.hr
Cyprus	+357 22702286	+357 22702392	+605 4158	cyprus.radio@cytanet.com.cy
Egypt	+20 3 4802299	+20 3 4875633		
France	+33 2 98221559	+33 2 98221432		coord.navarea2@shom.fr
Georgia	+995 222 73913	+995 222 73905		magheadof@fsc.gov.ge
Greece	+210 6551806	+210 6517811		nasf@hnhs.gr
Israel	+972 48632080	+972 48632118	+606 46632 SAPAN IL	benny@mot.gov.il techni@mot.gov.il
Italy	+390 65 9084578	+390 65 9084440		piero.pellizari@infrastrutturetrasporti.it
Lebanon	+961 1 443822	+961 1 371647		
Libya		+218 21 4893436		
Malta	+356 22 914424	+356 21 244419		rccmalta@gov.mt
Morocco	+212 3 7704790	+212 3 7704607		doghmi@mtpnet.gov.ma
Romania	+40 241 602706 +40 241 737102	+40 241 737103		office@radionav.ro
Russia	+7 812 3237548 +7 812 3237260	+7 812 2775900	+64 121531 NAVIO RU	gunio@homepage.ru
Serbia and Montenegro	+381 82 672531 +381 88 640135	+381 82 672531		hirm@cg.yu
Slovenia	+386 5 6632100	+386 5 6632102		ursp.box@gov.si
Syria	+963 41 472593 +963 41 472597	+963 41 475805	45121 MWANI	danco@net.sy
Tunisia	+216 72 510267	+216 72510777		sho@e-mail.ati.tn
Turkey	+90 216 3222580	+90 216 3310525	+90 29783 DKSH KR	ttelsiz@ttnet.net.tr
Ukraine	+380 44 2551991	+380 44 2551991		navigation@dudg.kiev.ua

(former amendment Ad8/06)
Spanish IHM Navigation Section Ad10/06

Page 231, NAVAREA IV (United States), delete section and replace by

NAVAREA IV (United States)

West Atlantic (North of 7°00'N)

National Geospatial-Intelligence Agency (NGA)

Attn: PVMM (Mail Stop D-44)

4600 Sangamore Rd, Bethesda, MD 20816-5003, USA

Telephone: +1 301 2273147

Fax: +1 301 2273731

Telex: +230 898334 NIMA USA

Easylink: MBS 62554950

Telegram: NGA NAVSAFETY BETHSEDA MD

E-mail: navsafety@nga.mil

National Co-ordinators

COUNTRY	TELEPHONE	FACSIMILE	TELEX	E-MAIL
Babados	+246 4304700	+246 4295348		fergusson@sunbeach.net
Bahamas	+809 3228108	+809 3268667		
Belize	+501 2232309	+501 2272500		bzportauth@btl.net
Bermuda	+441 2971010	+441 2971530		operations@rccbermuda.bm
Canada	+1 613 9954413	+1 613 9474369		oconnorto@dfo-mpo.gc.ca
Colombia	+57 1 2222511	+57 1 2222636		dcioh@cioh.org.co
Costa Rica				
Cuba	+53 7 2090926	+53 7 2041160		
Dominican Rep.	+1 809 5083311	+1 809 5347522		internacional@geocuba.co.cu
Greenland				
Guatemala	+502 2582202	+502 2562645		tyrone@intelnet.net.gt
Guyana	+592 2257330	+592 2269581		t&hd@solutions2000.net
Guyane Française				
Haiti				
Honduras	+504 8850714	+504 6651246		Enp.mis@gbm.hn
Jamaica	+1 876 9226630	+1 876 9671010		tshaw@nla.gov.jm
Martinique				
Mexico	+52 55 56246500 ext 1244	+52 55 56798045		digadhicar@semar.gob.mx
Nederlandse Ant.	+599 9 4637700			kw.rcc@czmcarib.an
Nicaragua	+505 2492756	+505 2492756		scordonero.drh@ineter.go.ni
Panama	+507 2361843	+507 2361841		dfuentes@mop.gob.pa
Puerto Rico	+1 787 7297778	+1 787 7296706		gantopswatch@gantsec.uscg.mil
Saint Lucia	+1 757 4527508	+1 758 4522062		cadeto@slaspa.com
Suriname	+597 476733 ext 250	+597 472940		neersel@mas.sr
Venezuela	+58 212 4835982	+58 212 4835878		dhn@ifxnw.com.ve

NGA Ad11/06

Page 233, NAVAREA X (Australia), National Co-ordinators table, delete and replace by:

National Co-ordinators

COUNTRY	TELEPHONE	FACSIMILE	TELEX	E-MAIL
Nouvelle Calédonie	+68 7264772	+68 7292303		mrcc.nc@lagoon.nc
Papua N. Guinea	+67 53236187	+67 53233339		
Solomon Is	+67 721609	+67 723798		
Vanuatu	+67 823128	+67 822949		vma@vanuatu.com.vu

RCC Australia Ad10/06

National Co-ordinators

COUNTRY	TELEPHONE	FACSIMILE	TELEX	E-MAIL
China	+86 10 65292218	+86 10 65292245		cnmrcc@msa.ga.cn hydro@msa.gov.cn
Indonesia	+62 21 64714810 +62 21 64714809	+62 21 64714819		infohid@indo.net.id
Korea, South	+82 32 8853826 +82 32 8800574	+82 32 8853088		hyjang@nori.go.kr ntm@nori.go.kr
Malaysia	+603 20716047 +603 33467777	+603 26987972 +603 31685020		rmnodc@tm.net.my kpgr@marine.gov.my
Philippines	+63 2 2413494 +63 2 2422955	+63 2 2422090		hydro@namria.gov.ph cgds@namria.gov.ph
Russia	+7 812 2771511 +7 812 2775900	+7 812 2775900 +7 812 2775900	+64 121531 NAVIO RU	gunio@homepage.ru
Singapore	+65 63751600 +65 63751562	+65 62759247 +65 62787646		mpa@mpa.gov.sg atar@mpa.gov.sg
Thailand	+66 2 4665758 +66 2 3613385	+66 2 4721286 +66 2 3613596		hydro@navy.mi.th hydro@mailnenw.navy.mi.th
Vietnam	+84 31 550583	+84 31 550797		vms_office@hn.vnn.vn

Japan Coast Guard Ad11/06

Page 234, NAVAREA XII (United States), delete section and replace by

NAVAREA XII (United States)

North Pacific (East of 180°)

National Geospatial-Intelligence Agency (NGA)

Attn: PVMM (Mail Stop D-44)

4600 Sangamore Rd, Bethesda, MD 20816-5003, USA

Telephone: +1 301 2273147

Fax: +1 301 2273731

Telex: +230 898334 NGA USA

Easylink: MBS 62554950

Telegram: NGA NAVSAFETY BETHSEDA MD

E-mail: navsafety@nga.mil

National Co-ordinators

COUNTRY	TELEPHONE	FACSIMILE	TELEX	E-MAIL
Canada	+1 613 9954413	+1 613 9474369		oconnorto@dfo-mpo.gc.ca
Colombia	+57 1 2222511	+57 1 2222636		dcioh@cioh.org.co
Costa Rica				
Ecuador	+593 4 2481300	+593 4 2485166		sec-hidrogratia@inocar.mil.ec
El Salvador	+503 2260 8000 ext 8759			lehernandez@webmail.cnr.gob.sv
Guatemala	+502 2582202	+502 2562645		tyrone@intelnet.net.gt
Honduras	+504 8850714	+504 6651246		ign@sdnhon.org.hn
Mexico	+52 55 56246500 ext 1244	+52 55 56798045		digadhicar@semar.gob.mx
Nicaragua	+505 2492756	+505 2492756		scordonero.drh@ineter.go.ni
Panama	+507 2361843	+507 2361841		dfuentes@mop.gob.pa

NGA Ad11/06

Page 246, **Chapter 15: SAFETYNET**, EGC SAFETYNET SYSTEM, Transmission schedule for full GMDSS service table, delete NAV/MET AREA IV entry and replace by:

IV	USA	1000, 2200 (1200 Ice reports N Atlantic)	USA	0430, 1030, 1630, 2230	AOR-W
----	-----	---	-----	------------------------	-------

(former amendment Ad7/06)
USCG Ad11/06

VOLUME 6, PART 4, NP 286(4), 2005/06

Published BA Wk 38/05

(Last Amendments: Edition No 6 dated 17 March 2006)

Page 253, **MALAYSIA PENINSULAR (East Coast), KERTEH**

Delete entry and replace by:

KERTIH 4°34'N 103°28'E

Pilots and Terminals

DESCRIPTION: There are three marine terminals located within Kertih Port:

- (1) Kertih Marine Facilities (KMF)
- (2) PETRONAS Penapisan (Terengganu) Sdn Bhd SPM
- (3) Terengganu Crude Oil Terminal (TCOT) SALM, operated by Esso Production Malaysia Inc.

CALL: Kertih Marine Facilities (KMF): Kertih Port Radio (KPR)
PETRONAS Penapisan: Kertih Port Radio (KPR)
Terengganu Crude Oil Terminal (TCOT): Kertih Marine Control

TELEPHONE: Kertih Marine Facilities (KMF): +60(0)9 8305600, 8305616 & 8305790
PETRONAS Penapisan: +60(0)9 8271244 & 8271134
Terengganu Crude Oil Terminal (TCOT): +60(0)9 8271277

FAX: Kertih Marine Facilities (KMF): +60(0)9 8305619 & 8305618
PETRONAS Penapisan: +60(0)9 8271634
Terengganu Crude Oil Terminal (TCOT): +60(0)9 8271232 & 8285241

TELEX: PETRONAS Penapisan: +84 51326 (PETREF MA 51326)
Terengganu Crude Oil Terminal (TCOT): +84 51397 (TCOT MA 51397)

FREQUENCY: Kertih Marine Facilities (KMF): Ch 16 72; 10 72
PETRONAS Penapisan: 16 72; 73
Terengganu Crude Oil Terminal (TCOT): 16; 67 69

HOURS: H24

PROCEDURE:

- (1) Pilotage is compulsory for all vessels.
- (2) On departure from the last port, or immediately after receiving instructions to proceed to Kertih Port, vessels should fax the appropriate terminal with the required arrival information.
- (3) Vessels should advise updated ETA 72h, 48h and 24h prior to arrival.
- (4) Vessel's agent shall confirm booking for pilot 12h, 6h and 2h before arrival.
- (5) Vessels should establish VHF contact with the appropriate terminal when within range.
- (6) Vessels departing from the KMF marine facilities should contact Kertih Port Radio on VHF Ch 72 at least 12h, and confirm 6h and 2h prior to unberthing.
- (7) Pilot boards in the following positions:
 - (a) 4°38'00N 103°33'00E (Pilot Station 1)
 - (b) 4°35'00N 103°33'00E (Pilot Station 2)

Kertih Port Information Booklet Ad10/06

AMENDMENTS TO ADMIRALTY SAILING DIRECTIONS 2006

NP 13 Australia Pilot Volume I (2005 Edition)

Queensland - Weipa — Anchorages

92

After Paragraph 2.40 1 line 4 *Insert*:

Designated anchorages for vessels awaiting a pilot are established N and S of the approach fairway, as shown on the chart.

Australian Notice 3/124/06

[Ad 11/06]

Northern Territories - Darwin —
Submarine pipeline; light-beacons

149

After Paragraph 4.81 2 *Insert*:

Submarine pipeline

4.81a

- 1 A submarine gas pipeline is laid from position 12°31'·6S 130°51'·6E through the waters of Port Darwin, thence generally WNW to position 11°04'S 126°37'E, within Bayu Undan Gasfield (4.31). The alignment, 072¼°, of the first leg of the pipeline, is marked by two light-beacons.

For further information regarding submarine pipelines see 1.38.

Australian Notices 6/240/05; 4/169/06

[Ad 11/06]

Northern Territories - Darwin —
Traffic regulations; light-buoys

153

After Paragraph 4.112 1 *Insert*:

Traffic regulations

4.112a

- 1 A restricted area is established at Wickham Point LNG Jetty (4.137) as follows:

At all times vessels are prohibited from approaching within 100 m of the jetty. This is extended to 500 m from the jetty 45 minutes before berthing, and until departure of an LNG tanker.

That part of the 500 m restricted area which lies N and S of the jetty is marked by light-buoys (special).

Darwin Port Corporation

[Ad 11/06]

Northern Territories - Darwin —
Berth; light-buoy

158

After Paragraph 4.137 1 *Insert*:

Wickham Point LNG berth lies 9 cables S of Wickham Point (12°30'·5S 130°51'·5E). The T-head jetty extends 7 cables W from the shore. A light-buoy (isolated danger) is moored 4 cables W of the berth.

Australian Notices 23/996/05; 4/169/06

[Ad 11/06]

South Australia - Adelaide —
Depth; leading beacons

386

Paragraph 12.118 1 line 6 *Add*:

1 cable W of Berth No 11, Commercial Wharf, a 2·3 m patch exists in position 34°50'·32S 138°30'·34E.

389

Paragraph 12.136 7 lines 5-7 *Replace by*:

Leading marks. The alignment (074¾°), astern, of the leading beacons situated between Commercial Wharf and No 1 Dock, leads through the central span of Birkenhead Bridge.

Australian Notice 4/172/06

[Ad 11/06]

NP 36 Indonesia Pilot Volume I (2005 Edition)

Singapore Strait - Sambu approaches — Wreck

211

After Paragraph 10.136 4 line 3 *Add*:

Caution. A dangerous wreck lies 4 cables W of the pilot boarding position.

Indonesian chart 44

[Ad 10/06]

NP 44 Malacca Strait and West Coast of Sumatera
Pilot (2003 Edition)Singapore Strait - Indonesia -
Sambu approaches — Wreck; obstructions

221

Paragraph 7.91 1 *Replace by*:

- 1 Pulau Sambu (1°10'N 103°54'E), on which a large oil terminal operates, is situated off the entrance to Selat Bulan, and is described in *Indonesia Pilot Volume I* together with associated pilotage, buoyage and anchorages.

- 2 The pilot boarding position lies 6¾ cables SW of Batu Berhanti Light-beacon (1°11'N 103°53'E) (7.89) and may be approached direct from the general east-going route (7.89) passing N of a dangerous wreck 1 mile WSW of the light-beacon. Two obstructions lie 5 and 6½ cables W of the wreck.

- 3 Selat Bulan is a navigable strait for small or medium-sized vessels which forms part of the shortest route between Palembang (Indonesia) and Singapore.

Indonesian chart 44

[Ad 10/06]

AMENDMENTS TO ADMIRALTY SAILING DIRECTIONS 2006

**Singapore Strait - Middle Channel -
Ramunia Shoals — Wreck; buoy****228**

Paragraph 7.165 1 line 7 Existing Section IV Notice Week

31/05 *Replace by:*

...considerably.

After Paragraph 7.170 1 line 8 Existing Section IV Notice

Week 31/05 *Delete*

230

Paragraph 7.186 3 Including existing Section IV Notice

Week 31/05 *Delete*

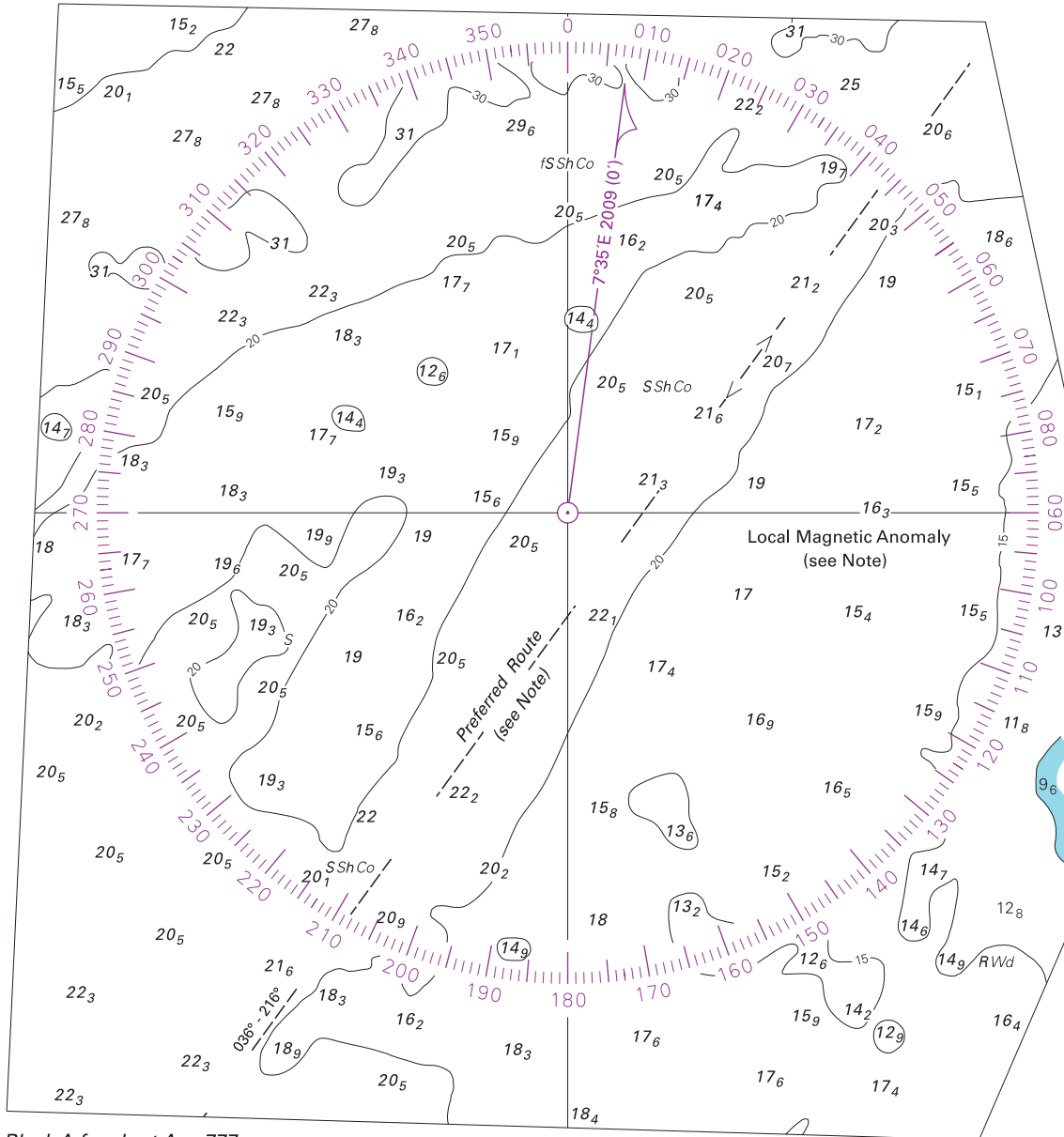
Paragraph 7.187 2 Including existing Section IV Notice

Week 31/05 *Delete*

MPA Singapore Notice 105/05

[Ad 11/06]

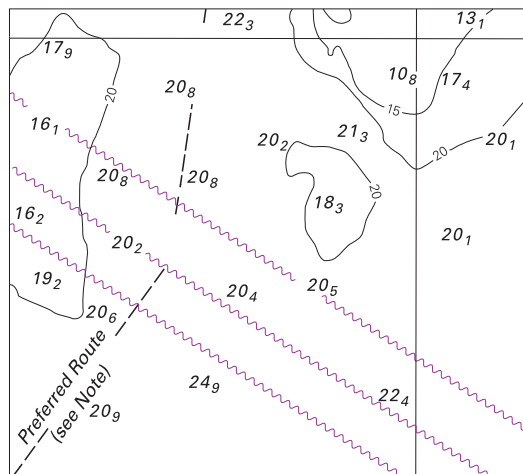
To accompany Australian Notice to Mariners 311/2006



Block A for chart Aus 777

© Commonwealth of Australia 2006

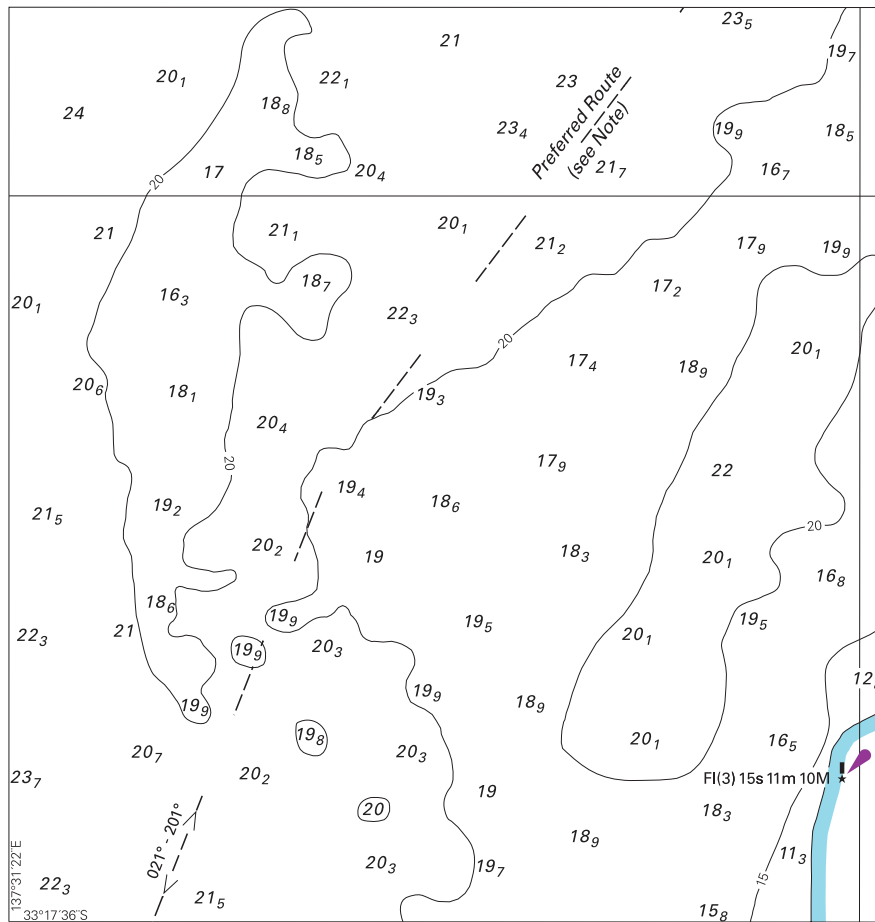
To accompany Australian Notice to Mariners 311/2006



Block B for chart Aus 777

© Commonwealth of Australia 2006

To accompany Australian Notice to Mariners 311/2006



Block C for chart Aus 778

© Commonwealth of Australia 2006