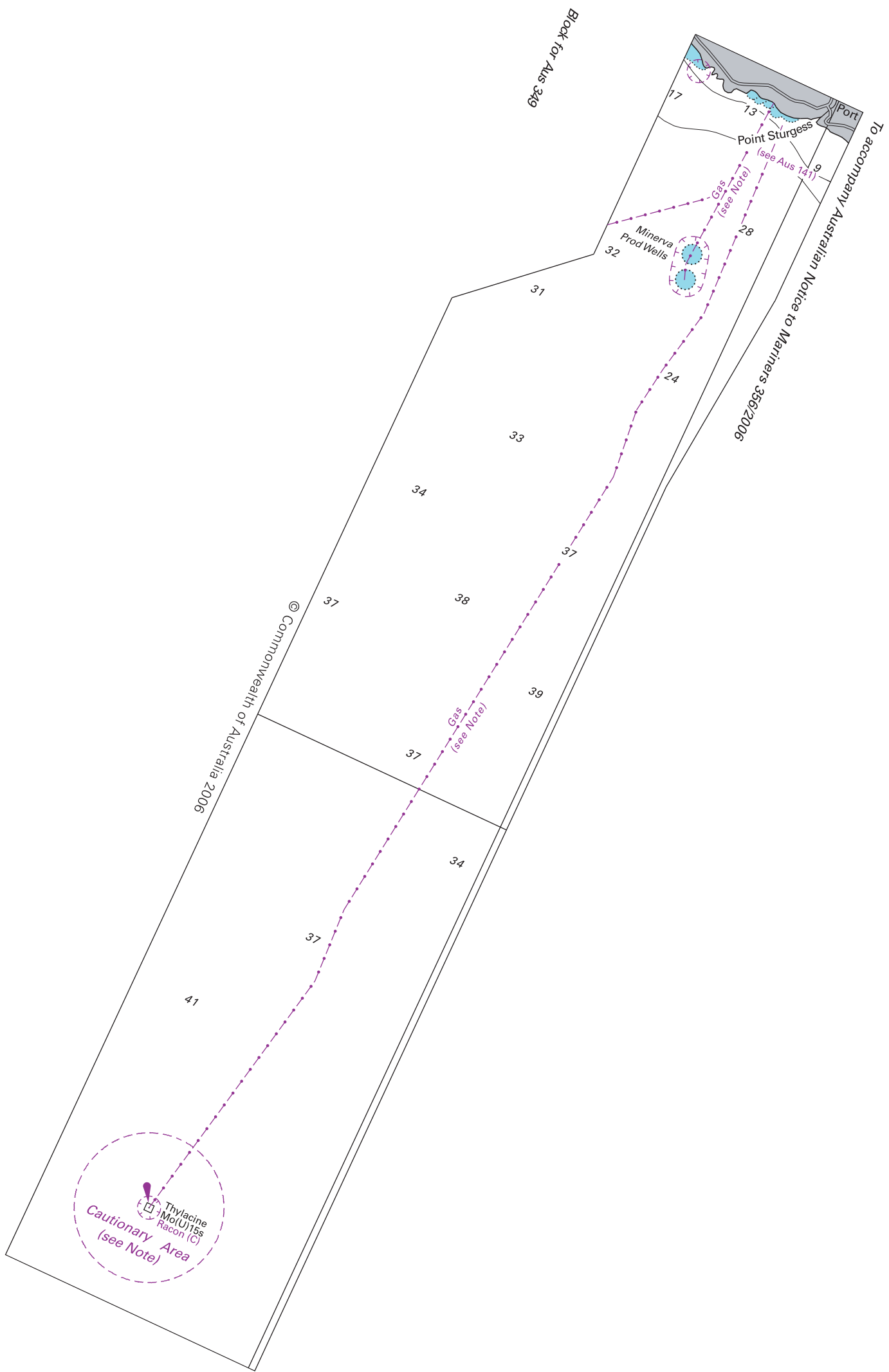


To accompany Australian Notice to Mariners 356/2006

CAUTIONARY AREA

Vessels are to avoid  
navigating, anchoring or fishing within this area.

Note for chart Aus 349



Block for Aus 349

To accompany Australian Notice to Mariners 356/2006

© Commonwealth of Australia 2006

Thylacine  
Mo(U)15s  
Cautionary Area  
(see Note)

Minerva  
Prod Wells

Point Sturgess

Port

17

13

9

(see Aus 141)

Gas (see Note)

Gas (see Note)

Gas (see Note)

28

31

24

33

34

37

38

39

37

34

37

41

Gas (see Note)