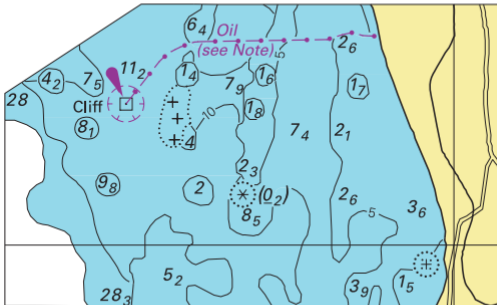


To accompany Australian Notice to Mariners 263/2006



© Commonwealth of Australia 2006

Block for chart Aus 333

## *To accompany Australian Notice to Mariners 263/2006*

### OIL AND GAS PIPELINES

In many cases submarine pipelines carrying flammable oil and gas are not buried in the seabed and depths may be up to two metres less than charted. Gas pipelines carry natural gas at high pressure. Vessels should not anchor or trawl in the vicinity of the pipelines as a damaged pipeline could cause a fire.

*Note for chart Aus 333.*