




Australian Notices to Mariners are the authority for correcting Australian Charts

AUSTRALIAN NOTICES TO MARINERS

© Commonwealth of Australia 2002 - Copyright restrictions apply to Notices to Mariners

 Notices 456 -491

Published fortnightly by the Australian Hydrographic Service

B. J. KAUFER,
Hydrographer of Australia

- SECTIONS. I. **Australian Notices to Mariners, including blocks and notes.**
 III. **Navigational Warnings.**
 IV. **Hydrographic Reports.**

[British Admiralty Notices to Mariners](#)
[New Zealand Notices to Mariners](#)

The substance of these notices should be inserted on the charts affected.

Bearings are referred to the true compass and are reckoned clockwise from 000° (North) to 359°: those relating to lights are given as seen by an observer from seaward. The range quoted for a light is its nominal range. Fog signals are sounded only during thick or foggy weather, unless otherwise stated. Depths are with reference to the chart datum of each chart. Heights are above mean high water springs or mean higher high water, as appropriate.

The capital letter (P) or (T) after the number of any notice denotes a preliminary or temporary notice respectively, which are contained separately at the end of the permanent notices. A star () adjacent to the number of a notice indicates that the notice is based on original information.*

Mariners are particularly requested to notify the AUSTRALIAN HYDROGRAPHIC SERVICE, Locked Bag 8801 South Coast Mail Centre, NSW 2521 (Fax 02-4221 8599, e-mail Hydro.NTM@defence.gov.au or, alternatively by filling in and submitting the [Hydrographic Notes](#) forms located on the web site – www.hydro.gov.au), immediately on the discovery of new dangers or suspected dangers to navigation. For changes or defects in aids to navigation notify AusSAR (Fax 02-6230 6868 or email rccaus@amsa.gov.au).

Copies of these notices can be obtained from the AUSTRALIAN HYDROGRAPHIC OFFICE, 8 Station Street, Wollongong, and Agents for the sale of charts and hydrographic publications.

The Commonwealth of Australia is the owner of, or is otherwise responsible for, the copyright in this work. It is protected under the Copyright Act 1968 and international convention. Except as expressly authorised below, the work may not be copied, reproduced, adapted, changed or commercially exploited, in whole or in part, or the format in which it is stored altered, without the prior written permission of the Australian Hydrographic Office.

The Notices may be copied for the purpose of inserting their substance on official charts and other publications. However, any copies of the notices may not be sold for profit.

© Commonwealth of Australia 2002

NUMERICAL INDEX OF CHARTS AFFECTED

Edition No 15

26 July 2002

Notices	Aus Chart, ENC Cell, BA Pub
456	Aus 112, 246, 258, 754, ,
456	AU410143, 410144, 411140, 411141, 499142, 411143, 412141, 412142, 412143, 413141, 5__4P1, 413143, 4__834
456	NP 281(2)
457	Electronic Navigational Chart (ENC)
458	Aus 798
459	Aus 191, 807
460	Aus 197, 198, 199, 808
461	Aus 202
462	Aus 204
463	Aus 204
464	Aus 209
465	Aus 236
466	Aus 236
467	Aus 235, 236, 814
468	Aus 366, 819
469	Aus 250
470	Aus 372, 829
471	Aus 621
472	Aus 518
473	Aus 305
474	Aus 314
475	Aus 741
476	Aus 741
477	Aus 64
478	Aus 600
479	Aus 171, 173
480	Aus 174
481	Aus 799
482	Aus 182, 357, 357A, 358
483(T)	Aus 814
484(T)	Aus 243
485(T)	Aus 250
486(T)	Aus 4, AU413141, 5__4P1
487(P)	Aus 17, 18, 20, 21, 26, 28, 29, 308, 309, 310, 311, 315, 316, 318, 411, 413, 442, 720, 721, 722, 724, 725, 726, 727
488(T)	Aus 327, 328, 742
489(T)	Aus 333, 753
490(T)	Aus 125, 781
491(T)	Aus 182, 357, 357A, 358

456 AUSTRALIA - Publications.

AHS (02/4210 & 02/4310), Admiralty Notices Edition 26/2002 (02/4309). (AH99/229-02, 99/226-02, 01/142)

New Electronic Navigaton Chart (ENC)

<i>Cell Name</i>	<i>Released</i>	<i>Title</i>
AU410143	July 2002	Torres Strait – Dove Islet to Bramble Cay (Great North East Channel)
AU410144	July 2002	Coral Sea - Eastern Approaches to Great North East Channel
AU411140	July 2002	Arafura Sea - Western Approaches to Carpentaria Shoal
AU411141	July 2002	Arafura Sea – Larpent Bank to Carpentaria Shoal
AU499142	July 2002	Torres Strait – Tern Islet to Larpent Bank
AU411143	July 2002	Torres Strait – Dugong Island to Dove Islet (Great North East Channel)
AU412141	July 2002	Gulf of Carpentaria – “North-South” Transit
AU412142	July 2002	Great Barrier Reef Inner Route – Viking Reef to Tern Islet
AU412143	July 2002	Great Barrier Reef Inner Route – Cape Grenville to Viking Reef
AU413141	July 2002	Gulf of Carpentaria – Approaches to Weipa
AU5__4P1	July 2002	Gulf of Carpentaria – Port of Weipa
AU413143	July 2002	Great Barrier Reef Inner Route – Gallon Reef to Cape Grenville
AU4__834	July 2002	Great Barrier Reef Inner Route – Claremont Isles to Cape Weymouth

New chart to be published shortly

<i>Chart</i>	<i>Title</i>	<i>Scale</i>
Aus 258	Australia - East Coast - Queensland - Plans in Queensland - (Sheet 1) Plan: Gladys Inlet to King Reefs Dunk Island Mourilyan Harbour Oyster Point	1:50 000 1:50 000 1:7 500 1:7 500

New edition to be published shortly

<i>Chart</i>	<i>Title</i>	<i>Scale</i>
Aus 112	Australia - West Coast - Western Australia - Approaches to Fremantle	1:37 500
Aus 246	Australia – East Coast - Queensland - Approaches to Port of Gladstone Inset: Turkey Beach	1:37 500 1:37 500
Aus 754	Australia - West Coast - Western Australia - Lancelin to Cape Peron	1:150 000

Admiralty Publication

<i>NP No</i>	<i>Title</i>	<i>Date</i>	<i>RRP(UK)</i>	<i>Remarks</i>
NP 281(2)	Admiralty List of Radio Signals. Coast Radio Stations. Part 2: Oceania, the Americas and the Far East.	27/06/02	£28.95	The 2001 edition of NP 281(2) is thereby cancelled. Please note amended coverage, Coast Radio Stations for the Pacific are now included in NP 281(2).

457 AUSTRALIA – Publications –Electronic Navigational Chart (ENC).

AHS (02/4310). (AH01/142)



Seafarer® ENC (Electronic Navigational Charts) are Australia’s authorised vector format electronic charts for use in International Maritime Organization (IMO) compliant Electronic Chart Display and Information Systems (ECDIS) and compatible Electronic Chart Systems (ECS). **Seafarer® ENC** are official electronic charts produced in International Hydrographic Organization (IHO) S57 Edition 3.1 format.

The *Seafarer*[®] *ENC* release coincided with the effective date of the new SOLAS V regulations covering the carriage of electronic charts and ECDIS.

Initial Release

The initial collection of *Seafarer*[®] *ENC* data, released on 1 July 2002, include “cells” of data covering the main shipping route of the inner Great Barrier Reef from Weipa through the Torres Strait to the Claremont Isles.

Future Releases

Future releases will include progressive coverage down the East Coast of Australia, with the next release, scheduled for December 2002, providing coverage to Cairns.

Priorities for ENC Releases

Seafarer[®] *ENCs* usually contain much more information than a paper chart, so it will take some time to provide coverage for all areas covered by Australian charts. Therefore, *Seafarer*[®] *ENC* will be released in stages according to the following priorities: navigationally restricted and environmentally sensitive areas and major ports, major shipping channels, harbour approaches and finally, coastal regions. The AHS’ first priority is the Torres Strait and Great Barrier Reef (GBR) region covering approximately 1000 miles including Great North East Channel, Hydrographers Passage and the approaches to most ports on route. This will complement the Australian Maritime Safety Authority’s (AMSA) DGPS coverage for the area. A segment of the compulsory pilotage routes in the GBR, from Weipa to Cape Grenville, contains depth data at 1-metre contour intervals between 5 and 20 metres. This information is extracted from original surveys rather than from the existing paper charts. This will enable the full benefits of ECDIS, particularly its safety depth alarm function, to be used most effectively - something that is not available from data sets produced from simply digitising paper charts.

Distribution

Seafarer[®] *ENC* will be distributed initially to the commercial market through the AHS’ network of *Seafarer*[®] Product Distributors. However, the AHS is also considering “SENC distribution” where third party data providers will also be licensed to distribute AHS official ENC data in their own proprietary formats.

Security

Seafarer[®] *ENC* will be released unencrypted in the first instance however the AHS intends to adopt the world ENC data security standard once it is finalised. In the interim period unique, customer specific labelled CD-ROMS will be supplied to customers and an official “Navy anchor” reflective watermark will be etched in the surface of each data CD-ROM label to provide authentication.

Packaging

The initial *Seafarer*[®] *ENC* has been released on a single CD-ROM. Future releases will also be packaged on CD-ROM, as new editions.

Update Service

Seafarer[®] *ENC* is supported by a monthly update service. Updates can be downloaded from the AHS web-site at www.hydro.gov.au or supplied on CD-ROM if requested. Access to the web update service will be password-protected.

Official Electronic Chart Status

When used in an IMO compliant ECDIS, *Seafarer*[®] *ENCs* (and *Seafarer*[®] *RNCs* for those areas not yet covered by *Seafarer*[®] *ENCs*) will allow vessels navigating in Australian waters to meet the strict electronic chart carriage requirements of SOLAS Chapter V.

ENC Pricing

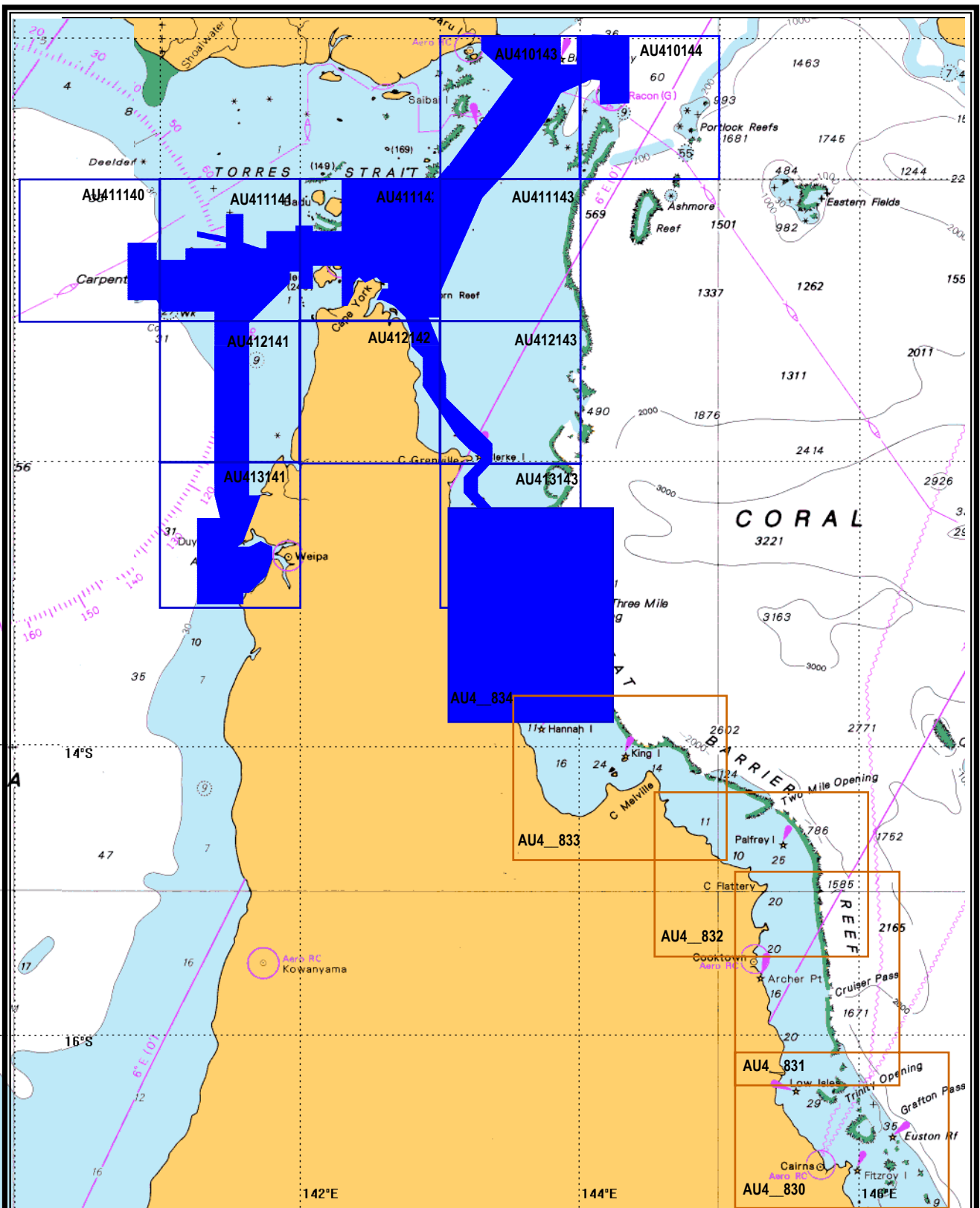
Seafarer[®] *ENC* may be purchased by itself, however, pricing has been designed to encourage the uptake of *Seafarer*[®] *ENC* and *Seafarer*[®] *RNC* as a complementary package of data under the “dual fuelling” concept. For existing and new *Seafarer*[®] *RNC* customers, the *Seafarer*[®] *ENC* update service will be provided free and will include progressive releases of *ENCs* covering GBR waters to Hay Point. The Recommended Retail Price of *Seafarer*[®] *ENC* is **\$863.50** however the AHS is providing discounted data for existing and new customers of *Seafarer*[®] *RNC* charts. Potential customers should contact their *Seafarer* Product Distributor for further details.

Ordering *Seafarer*[®] *ENC*

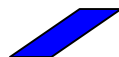
Customers wishing to purchase *Seafarer*[®] *ENC* should contact their licensed *Seafarer* Product Distributor for details of availability and pricing. Product Distributor details can be found at the AHS website – www.hydro.gov.au

***Seafarer*[®] *ENC* Sample Data**

The AHS has provided a *Seafarer*[®] *ENC* sample data cell for down-loading and evaluation from the AHS website – www.hydro.gov.au



release in July 2002



areas of navigable ENC data



release by December 2002

458* AUSTRALIA - Miscellaneous corrections.

AHS (02/4209). (AH99/243)

Aus 798 [695/2001]*On certain copies only*Amend legend, ..positions CANNOT be.. to ..positions CAN be..,
outside border SE corner**459* AUSTRALIA - NEW SOUTH WALES - Batemans Bay - Lights; leads.**

Waterways (02/540), (02/4361). (AH99/19-03)

Aus 191 (plan, Batemans Bay) [155/2002]Amend light to Iso. Y. 2s 12m 4M & F. Bu 35° 43'.20 S 150° 11'.40 E
light to Iso. Y. 2s 9m 4M & F. Bu 35° 43'.22 S 150° 11'.60 E*On certain copies only*

Substitute accompanying note 35° 48'.2 S 150° 11'.6 E

Aus 807 [234/2002]

Amend light to Ldg 2Iso. Y. & 2F.Bu 35° 43'.2 S 150° 11'.7 E

460* AUSTRALIA - NEW SOUTH WALES - Botany Bay - Lights.

Sydney Ports Corporation Notice 6/2002 (02/4395). (AH99/19-03)

Aus 197 [296/2002]

Amend light, to F. WRG.13M & F. RG. 33° 58'.00 S 151° 11'.12 E

Substitute legend, Dir 312°, for 311° 57' 34° 03'.0 S 151° 17'.9 E

Aus 198 [695/2001]

Insert light, Iso.Y. 3s 2M 33° 58'.515 S 151° 11'.620 E

Amend light, to F. WRG. 17m 13M & F. RG. 5M 33° 58'.09 S 151° 11'.06 E

Substitute legend, Dir 312°, for 312° 34° 03'.2 S 151° 17'.9 E

Aus 199 [392/2001]Insert light, Iso.Y. 3s 2M (a) 33° 58'.425 S 151° 11'.680 E
sector at light, (a) 310.5° to 313.5°

Amend light, to F. WRG. 17m 13M & F. RG. 5M 33° 57'.998 S 151° 11'.116 E

Substitute legend, Dir 312°, for 312° 34° 00'.81 S 151° 14'.89 E

Aus 808 [234/2002]

Amend light, to F. WRG & F. RG. 33° 58'.0 S 151° 11'.1 E

Substitute legend, Dir 312°, for 312° 34° 05'.6 S 151° 21'.4 E

461* AUSTRALIA - NEW SOUTH WALES - Port Jackson - Johnstons Bay - Lights.

Sydney Ports Corporation Notice 7/2002 (02/4396). (AH99/19-03)

Aus 202 [NE 06/07/2001]Insert light, F. G. 2M 33° 51'.202 S 151° 11'.847 E
light beacon, LFI. Y. 10s, without topmark (a) 33° 51'.935 S 151° 11'.449 E
light beacon, FI (4)Y. 10s, without topmark 33° 51'.864 S 151° 11'.410 E
pecked line from (a), in direction 337.4° for 400m, with
legend 157.4°

Note: chart Aus 200 will be updated by block correction.

462* AUSTRALIA - NEW SOUTH WALES - Pittwater - Buoys.

NSW Waterways (02/4207). (AH99/18)

Aus 204 [NE 8/3/2002]Substitute special spar buoy, without topmark, for conical buoy 33° 36'.66 S 151° 18'.35 E
special spar buoy, without topmark, for light buoy 33° 37'.92 S 151° 17'.36 EDelete special cylindrical buoy 33° 37'.90 S 151° 18'.45 E
33° 37'.64 S 151° 18'.71 E
33° 37'.44 S 151° 18'.82 E
special light buoy 33° 36'.93 S 151° 18'.81 E

463* AUSTRALIA - NEW SOUTH WALES - Pittwater - Gas pipeline.

Agility (02/4432). (AH99/269)

Aus 204 [462/2002]

Insert	gas pipeline between	33° 39'.64 S	151° 18'.28 E
		33° 39'.59 S	151° 18'.48 E
	legend, Gas (see Note), centred on	33° 39'.7 S	151° 17'.9 E
	accompanying note	33° 39'.0 S	151° 07'.0 E
		33° 38'.6 S	151° 07'.0 E
Amend	legend, to <i>Cable and Pipeline Area</i> (see Note), centred on	33° 38'.5 S	151° 17'.0 E

464* AUSTRALIA - NEW SOUTH WALES - Port Stephens - Light beacon; light buoy withdrawn.

Waterways (02/4208). (AH99/19-03)

Aus 209 [38/2002]

Insert	north cardinal light beacon, Q, with top mark	32° 41'.43 S	152° 03'.10 E
Delete	port lateral light buoy	32° 41'.42 S	152° 03'.11 E

465* AUSTRALIA - QUEENSLAND - Moreton Bay - Manly Boat Harbour - Light beacons.

Queensland Transport Notice 231/2002 (02/4006). (AH00/107)

Aus 236 (plan, Manly Boat Harbour) [427/2002]

Move	starboard lateral light beacon No 7	27° 27'.16 S	153° 11'.46 E
	to	27° 27'.183 S	153° 11'.439 E
Delete	starboard lateral light beacon	27° 27'.19 S	153° 11'.42 E

466* AUSTRALIA - QUEENSLAND - Moreton Bay - Buoyage.

Queensland Transport Notice 229/2002 (02/3908). (AH00/107)

Aus 236 [465/2002]

Insert	east cardinal light beacon, Q(3) 10s, with topmark	27° 35'.116 S	153° 19'.174 E
	beacon, with rectangular topmark	27° 34'.050 S	153° 18'.777 E
	light beacon, Fl. R. 3s, with rectangular topmark	27° 33'.816 S	153° 19'.080 E
Delete	light beacon	27° 35'.03 S	153° 19'.11 E
		27° 33'.98 S	153° 18'.80 E
	depth 0 ₈ m	27° 33'.8 S	153° 19'.0 E

467* AUSTRALIA - QUEENSLAND - Moreton Bay - Spitfire Banks - Wreck dispersed.

Former Notice - 438(T)/2001 is cancelled

Queensland Transport Notice 247/2002 (02/4362). Wreck is MV *Just Cruisin*. (AH98/292)**Aus 235 [427/2002]**

Insert	foul symbol	27° 01'.172 S	153° 16'.985 E
--------	-------------	---------------	----------------

Aus 236 [466/2002]

Insert	foul symbol	27° 01'.172 S	153° 16'.985 E
--------	-------------	---------------	----------------

Aus 814 [427/2002]

Insert	foul symbol	27° 01'.16 S	153° 17'.00 E
--------	-------------	--------------	---------------

468* AUSTRALIA - QUEENSLAND - Heron Island - Light; mooring buoy permanently withdrawn.HMAS *Paluma* (02/3867 & 3868). (AH98/292, AH99/14)**Aus 366 [394/2002]**

Insert	legend, (<i>Lt Fl. G</i>), centred on	23° 25'.5 S	151° 55'.5 E
--------	---	-------------	--------------

Aus 819 [158/2002]

Substitute	legend, (<i>Lt Fl. G. 1.5s</i>), for legend (<i>conspic</i>) centred on	23° 26'.1 S	151° 54'.9 E
Delete	lit mooring buoy	23° 27'.1 S	151° 53'.4 E

469* AUSTRALIA - QUEENSLAND - Hay Point - Light buoy altered in position.

Queensland Transport (02/4077). (AH99/14)

Aus 250 (plan, Hay Point) [332/2002]

Move	special light buoy	21° 16'.205 S	149° 18'.765 E
	to	21° 16'.140 S	149° 18'.830 E

470* AUSTRALIA - QUEENSLAND - Meaburn Rock - Wreck.HMAS *Paluma* HI 355 (02/4080). (AH98/288)**Aus 372 [359/2002]**Insert depth, 8₅ fm, enclosed by danger circle, with legend *Wk* 17° 33'.73 S 146° 09'.83 E

Delete dangerous wreck 17° 33'.6 S 146° 09'.7 E

Aus 829 [359/2002]Insert depth, 16₂ m, enclosed by danger circle, with legend *Wk* 17° 33'.75 S 146° 09'.62 E

Delete dangerous wreck 17° 33'.6 S 146° 09'.7 E

depth 16₄ m 17° 33'.5 S 146° 09'.8 E**471* PAPUA NEW GUINEA - Port Moresby - Depths.**HMAS *Mermaid* (02/3255). (AH99/417)**Aus 621 [233/2002]**Insert depth, 8₄ m, and extend 10m contour SW to enclose 9° 28'.23 S 147° 08'.94 E

5m contour between 9° 28'.18 S 147° 08'.97 E

9° 28'.24 S 147° 09'.01 E

Delete depth 4₂ m 9° 28'.21 S 147° 08'.99 Edepth 5₁ m 9° 28'.18 S 147° 08'.92 E

5m contour between 9° 28'.18 S 147° 08'.97 E

9° 28'.24 S 147° 09'.01 E

Aus 621 (plan, Port Moresby)

Insert accompanying block (B) 9° 28'.1 S 147° 09'.0 E

Aus 621 (plan, Port Moresby Wharves)

Insert accompanying block (A) 9° 28'.3 S 147° 09'.0 E

472* PAPUA NEW GUINEA - Normanby Island - Depth southward.HMAS *Paluma* (02/4211), UKHO (02/3953). (AH99/236, AH01/15)**Aus 518 [233/2002]**Substitute depth, 20₁ m, for 1₈ m 10° 07'.7 S 151° 04'.3 E**473* AUSTRALIA - NORTHERN TERRITORY - Port Langdon - Depths.**

AHS (02/4412). (AH99/388)

Aus 305 [425/2002]

Insert accompanying block 13° 40'.0 S 136° 50'.0 E

474* AUSTRALIA - TIMOR SEA - Ashmore Reef - Depth northward; contour eastward.HMAS *Melville* HI 351f (02/4072), AHS (02/2474). (AH97/95)**Aus 314 [274/2002]**

Substitute 50m contour value for 100m 12° 09'.7 S 125° 54'.0 E

Insert depth, 286m 12° 03'.36 S 123° 00'.19 E

Delete depth 190m and enclosing contour 12° 02'.9 S 123° 00'.4 E

475* WESTERN AUSTRALIA - Cape Lambert - Dixon Island - Marine farm.

Transport WA (02/840). (AH99/215)

Aus 741 [130/2002]Insert pecked line, with legend *Marine Farm* (see Note), between 20° 37'.34 S 117° 01'.89 E

20° 36'.06 S 117° 04'.54 E

20° 36'.60 S 117° 04'.80 E

20° 37'.88 S 117° 02'.15 E

accompanying note 19° 38'.0 S 117° 04'.0 E

476* WESTERN AUSTRALIA - Dampier - Prohibited anchorage area; islet; dangerous rock; depth.
 AHS (02/3952). (AH99/494)

Aus 741 [475/2002]

Insert	depth, 1 ₄ m, enclosed by contour	20° 26'.96 S	116° 50'.19 E
	islet	(a) 20° 26'.80 S	116° 58'.70 E
	rock which covers and uncovers	(b) 20° 26'.74 S	116° 58'.44 E
	danger line, enclosing (a) and (b) between	20° 26'.60 S	115° 58'.42 E
		20° 26'.61 S	115° 58'.25 E
	prohibited anchorage boundary between	20° 23'.45 S	116° 44'.50 E
		20° 23'.45 S	116° 41'.30 E
		20° 21'.18 S	116° 41'.30 E
		20° 19'.92 S	116° 45'.00 E
		20° 22'.46 S	116° 45'.00 E
Amend	legend, to <i>Anchoring Prohibited (see Note)</i> , centred on	20° 29'.3 S	116° 46'.9 E
Delete	prohibited anchorage boundary between	20° 23'.5 S	116° 44'.5 E
		20° 21'.3 S	116° 42'.3 E
	between	20° 22'.3 S	116° 45'.0 E
		20° 21'.2 S	116° 43'.6 E

477* WESTERN AUSTRALIA - Thevenard Island - Light characteristics.

List of Lights Vol K/2002 -- 1701.60,1701.70,1701.80
 UKHO (02/3869). (AH99/32)

Aus 64 [295/2002]

Insert	light description, <i>Mo(U) 10s</i> , centred on	21° 28'.9 S	115° 00'.0 E
	light description, <i>Mo(U) 15s</i> , centred on	21° 27'.0 S	115° 02'.8 E
		21° 26'.2 S	115° 03'.6 E

478* SOUTHERN OCEAN - Mawson - Depths.

HODSU (02/4078). (AH99/524)

Aus 600 [233/2002]

Insert	depth, 12 ₅ m, enclosed by contour	67° 29'.17 S	62° 48'.12 E
		67° 29'.35 S	62° 48'.74 E
	depth, 9 ₅ m, enclosed by contour	67° 29'.29 S	62° 49'.44 E
	depth, 19 ₃ m, enclosed by contour	67° 29'.55 S	62° 48'.96 E
	depth, 5 ₈ m, enclosed by contour	67° 30'.09 S	62° 49'.36 E
	depth, 2 ₉ m, semi-enclosed by contour to W	67° 30'.25 S	62° 49'.73 E
	depth, 9 ₅ m, semi-enclosed by contour to W	67° 30'.62 S	62° 49'.74 E
	depth, 378m	67° 31'.17 S	63° 49'.03 E
	depth, 402m	67° 29'.84 S	63° 47'.76 E
	depth, 291m	67° 28'.30 S	63° 48'.16 E
	magenta pecked line between	67° 26'.22 S	62° 47'.70 E
		67° 31'.64 S	62° 47'.70 E
		67° 32'.54 S	62° 50'.37 E
	magenta pecked line between	67° 29'.70 S	62° 49'.85 E
		67° 31'.00 S	62° 50'.10 E
		67° 31'.00 S	62° 50'.62 E
	magenta pecked line, with legend <i>CE (15) 100SX 2002</i> , between	67° 28'.29 S	63° 02'.27 E
		67° 28'.98 S	63° 02'.27 E
		67° 29'.09 S	63° 02'.63 E
Delete	magenta pecked line between	67° 26'.20 S	62° 47'.70 E
		67° 29'.70 S	62° 49'.85 E
	magenta pecked line between	67° 31'.00 S	62° 50'.62 E
		67° 32'.50 S	62° 50'.40 E
	legend, UNSURVEYED (see Caution note), centred on	67° 30'.6 S	62° 48'.7 E
	legend, Rep (1984), centred on	67° 31'.8 S	62° 49'.8 E

479* AUSTRALIA - TASMANIA - D'Entrecasteaux Channel - Buoyage.
SV *Windclimber* (02/4082). (AH99/39)

Aus 171 [400/2002]

Insert	special cylindrical buoy, without topmark	43° 07'.4 S	147° 18'.9 E
Substitute	special cylindrical buoy, without topmark, for special buoy	43° 06'.97 S	147° 16'.75 E
Delete	special buoy	43° 07'.2 S	147° 18'.3 E

Aus 173 [400/2002]

Insert	special cylindrical buoy, without topmark	43° 07'.4 S	147° 18'.9 E
Substitute	special cylindrical buoy, without topmark, for special buoy	43° 09'.75 S	147° 16'.50 E
	orange and black conical buoy for special buoy	43° 06'.97 S	147° 16'.75 E
		43° 09'.4 S	147° 14'.8 E
Delete	special buoy	43° 09'.1 S	147° 16'.7 E
		43° 08'.3 S	147° 18'.0 E
		43° 07'.2 S	147° 18'.3 E

480* AUSTRALIA - TASMANIA - Port Huon - Beacons permanently removed.
Hobart Ports (02/4359). (AH99/38-02)

Aus 174 (plan, Port Huon) [241/2002]

Delete	special light beacon A	43° 09'.62 S	146° 58'.14 E
	beacon K	43° 09'.83 S	146° 58'.72 E
	beacon	43° 10'.11 S	146° 58'.87 E

481* AUSTRALIA - TASMANIA - Five Mile Bluff - Pipeline northward.
Tasmania Natural Gas Project (01/9809). (AH00/281)

Aus 799 [401/2002]

Insert	gas pipeline, with legend, <i>Gas</i> (see Note), between	40° 59'.58 S	146° 53'.58 E
		40° 27'.80 S	146° 56'.55 E
Delete	gas pipeline, with legend, <i>Gas</i> (see Note), between	40° 59'.58 S	146° 53'.58 E
		40° 27'.80 S	147° 02'.00 E

482* AUSTRALIA - VICTORIA - Lakes Entrance - Light.
List of Lights Vol K/2002 -- 2545.00
Gippsland Ports (02/4401). (AH99/21-02)

Aus 182 (plan, Lakes Entrance) [368/2002]

Amend	light to <i>F. 15m 5M & F. Bu. 12m (rear (occas))</i>	(a) 37° 53'.32 S	147° 58'.39 E
Delete	sectors emanating from light (a)		

Aus 357 [401/2002]

Amend	light to <i>F. & F. Bu</i>	37° 53'.5 S	147° 58'.3 E
-------	--------------------------------	-------------	--------------

Aus 357A [401/2002]

Amend	light to <i>F. & F. Bu</i>	37° 53'.5 S	147° 58'.3 E
-------	--------------------------------	-------------	--------------

Aus 358 [368/2002]

Amend	light to <i>F. & F. Bu</i>	37° 53'.5 S	147° 58'.3 E
-------	--------------------------------	-------------	--------------

483(T)/2002 AUSTRALIA - QUEENSLAND - Gold Coast Seaway - Shoaling.

Queensland Transport Notice 267(T)/2002 (02/4573). (AH99/142)

Shoaling, least depth 3.0 metres, exists approximately 100 metres east of the south breakwater and extends north to the leading line (255°).

Mariners are advised to navigate with caution when transiting the Seaway and avoid the area south of the centreline of the leads when immediately east of the breakwaters.

Queensland Transport Gold Coast Office can be contacted for information.

Chart temporarily affected – Aus 814.

484(T)/2002 AUSTRALIA - QUEENSLAND - Bundaberg - Long Reach - Cable ferry operations.

Date - Until 23 November 2002

Queensland Transport Notice 240(T)/2002 (02/4313). (AH99/311)

A cable ferry is operating in approx position 24° 47'.88 S 152° 22'.91 E. The ferry will exhibit the lights and signals, including warning lights, as described by the International Regulations of the Prevention of Collisions at Sea which also include:

- (a) While the ferry is underway, with towing cables obstructing the channel, it will exhibit the lights and shapes for a vessel restricted in its ability to manoeuvre.
- (b) While the ferry is alongside either landing, it will exhibit the lights and shapes for an anchored vessel. During this mode river traffic may proceed past the ferry crossing.
- (c) Additional, by night the ferry will exhibit four white lights, positioned to illuminate the towing cables.

The ferry may operate over a 24 hour period and can be contacted on VHF Ch 16.

When approaching the crossing, vessels should sound a warning signal of one prolonged blast.

Mariners are advised to navigate with caution in the area.

Chart temporarily affected – Aus 243.

485(T)/2002 AUSTRALIA - QUEENSLAND - Mackay - Depth information.

Former Notice - 249(T)/2002 is cancelled

Queensland Transport Notice 249(T)/2002 (02/4362). (AH99/438)

Available depths (LAT) as at 27 June 2002:

	<i>Metres</i>	<i>Remarks</i>
* Entrance Channel	8.5	
* Swing Basin	8.3	
* Berth No 1	10.7	
Berth No 2	10.1	Disused
Berth No 3	13.1	
Composite Nos 3/4 Panamax Berth	13.1	
Berth No 4	10.6	East of E10
* Berth No 5	12.3	

* Indicates new or revised entry.

Caution: lesser depths may be encountered close to the Northern Breakwater within the Harbour Swing Basin.

Chart temporarily affected – Aus 250.

486(T)/2002 AUSTRALIA - QUEENSLAND - Weipa - Depth information.

Former Notice - 409(T)/2002 is cancelled

Queensland Transport Notice 261(T)/2002 (02/4476). (AH00/178)

Available depths as at 4 July 2002:

	<i>Metres</i>
* South Channel	10.8
Departure Channel	10.8
Cora Bank South Channel	7.3
Humbug Point Approaches	8.6
Humbug Point Berth	9.5
Evans Landing	9.4
Lorim Point East	12.3
Lorim Point West	12.3

*Indicates new or revised entry.

Dredging operations are in progress to remove shoaling off Urquahrt Point; the buoy has been removed.

Mariners are advised to navigate with caution in the area.

Chart temporarily affected – Aus 4.

ENC Cell temporarily affected – AU413141 – AU5__4P1.

487(P)/2002 AUSTRALIA - NORTHERN TERRITORY - Darwin - Differential global positioning system operational.

Former Notice - 411(P)/2002 is cancelled

AMSA ATH 2002/34 (02/4579), Auscaost 216/02 (02/4698). (AH99/28)

Cancel this notice on receipt.

Chart formerly affected – Aus 17 – Aus 18 – Aus 20 – Aus 21 – Aus 26 – Aus 28 – Aus 29 – Aus 308 – Aus 309 – Aus 310 – Aus 311 – Aus 315 – Aus 316 – Aus 318 – Aus 411 – Aus 413 – Aus 442 – Aus 720 – Aus 721 – Aus 722 – Aus 724 – Aus 725 – Aus 726 – Aus 727.

488(T)/2002 WESTERN AUSTRALIA - Varanus Island - Shoal.

V Justice (02/3727). (AH97/95)

A shoal, least depth 6.0 metres, has been reported in position 20° 38'.87 S 115° 37'.82 E (WGS84).

Chart temporarily affected – Aus 327 – Aus 328 – Aus 742.

489(T)/2002 WESTERN AUSTRALIA - Wedge Island - Military operation westward.

Date - Until 9 August 2002

DSTO (02/4488). (AH02/137)

Military operations are taking place in the following locations:

30° 50' S 114° 00' E

30° 50' S 114° 30' E

30° 50' S 114° 46' E

Mariners are advised to remain 5 nautical miles clear of the area.

Chart temporarily affected – Aus 333 – Aus 753.

490(T)/2002 SOUTH AUSTRALIA - Glenelg - Restricted areas; light buoys.

Former Notices - 161(T)/2001 & 302(T)/2001 are cancelled

Transport SA Notices 35 & 36/2002 (02/4576 & 4577). (AH99/345; 99/36)

Restricted areas, marked by light buoys, exist bounded by the following:

<i>Position</i>	<i>Remarks</i>
A. 34° 58'.10 S 138° 30'.11 E	west cardinal light buoy Q(9) 15s
34° 58'.10 S 138° 30'.43 E	
34° 58'.54 S 138° 30'.48 E	
34° 58'.31 S 138° 30'.21 E	west cardinal light buoy Q(9) 15s
B. 34° 57'.31 S 138° 29'.73 E	red spherical light buoy Fl 4s
34° 57'.18 S 138° 29'.69 E	red spherical light buoy Fl 4s
34° 57'.14 S 138° 29'.84 E	red spherical light buoy Fl 4s
34° 57'.27 S 138° 29'.81 E	red spherical light buoy Fl 4s
C. 34° 57'.36 S 138° 30'.20 E	
34° 57'.37 S 138° 30'.12 E	west cardinal light buoy Q(9) 15s
34° 57'.34 S 138° 30'.10 E	west cardinal light buoy Q(9) 15s
34° 57'.33 S 138° 30'.18 E	

Chart temporarily affected – Aus 125 – Aus 781.

491(T)/2002 AUSTRALIA - VICTORIA - Lakes Entrance - Shoaling.

Victorian Notice 40(T)/02 (02/4196). (AH00/299)

Mariners are advised that shoaling has occurred in Lakes Entrance fairway, particularly in the middle section, 230m to 320m south of the entrance.

Mariners are further advised to seek the latest information on the bar conditions before attempting a bar crossing by phoning Gippsland Ports on 03 5152 1974 (BH) or 0418 381 366 (AH).

Chart temporarily affected – Aus 182 – Aus 357 – Aus 357A – Aus 358.

III

NAVIGATION WARNINGS

The following radio messages have been received during the period to 12 July 2002. Signal copies of these messages may be destroyed. It is recommended that the reprint of Navigational Warnings should be kept in a file or a book divided into areas. Cancellation should be made on receipt of signals and reprints.

Rigs on location other than those listed in the latest Section III summary are the subject of Radio Navigational Warnings. Rigs in transit will not be the subject of Warnings.

AUSCOAST WARNING

- 199 Cancelled.
- 200 S Coast. Waterhouse Point light K1872.5 (35° 03'.7 S 136° 12'.0 E) altered to *Fl. 7.5s 18M*.
- 201 S Coast. Flinders Island light K1858 (33° 40'.9 S 134° 31'.0 E) range altered to *11M*.
- 202 Cancelled.
- 203 SE Coast. DPPLV *Lorelay* laying gas pipeline between 38° 22'.7 S 147° 37'.7 E and 38° 30'.7 S 147° 46'.3 E.
- 204 Cancelled.
- 205 SE Coast. Seismic survey vessel *Geco Beta* towing eight 3M long cables in area 38° 00'.0 S to 38° 51'.0 S and 146° 42'.0 E to 148° 44'.0 E.
- 206 N Coast. Inert exercise ground mines laid in area 12° 17'.30 S to 12° 31'.40 S and 129° 32'.70 E to 130° 32'.78 E to be recovered 30 AUG 02.
- 207 SW Coast. Fremantle fairway buoy (31° 57'.3 S 115° 38'.8 E) unlit.
- 208 SW Coast. Fremantle fairway buoy Racon ALRS87540 (31° 57'.3 S 115° 38'.8 E) unreliable.
- 209 Cancelled.
- 210 NW Coast. Seismic survey vessel *Veritas Searcher* towing 4.5M cable in area 9° 15'.0 S 10° 50'.0 S and 132° 20'.0 E to 134° 55'.0 E.
- 211 Cancelled.
- 212 Cancelled.
- 213 Cancelled.
- 214 SE Coast. Drill rig *Ocean Bounty* in position 38° 06'.3 S 149° 00'.5 E. 2.5M clearance requested.
- 215 Cancelled.
- 216 N Coast. Darwin DGPS established in position 12° 26'.7 S 130° 57'.5 E, now operational, frequency 294kHz, BAUD rate 200bps.
- 217 NE Coast. Yongala wreck isolated danger buoy established in position 19° 18'.2 S 147° 37'.3 E.

NAVAREA X WARNINGS

Nil issued.

Navigational warnings in force as at 110001UTC JUL 02.

Auscoast

093 129 142 168 190 200 201 203 205 206 207 208 210 214 216 217.

Navarea X

001 004 005.

Summary of mobile drilling rigs as at 120001UTC JUL 02.

<i>Name</i>	<i>Position</i>
Charles Explorer	11° 01'.0 S 126° 35'.0 E
Sedco 703	11° 58'.4 S 124° 35'.1 E
Ocean Bounty	38° 06'.3 S 149° 00'.5 E

NAVAREA XIV WARNINGS

- 105 Cancelled.
- 106 Cancelled.
- 107 Cancelled.
- 108 Cancelled.
- 109 Cancelled.
- 110 Cancelled.
- 111 Cancelled.
- 112 Cancelled.
- 113 South Pacific. SV *Mahala*, abandoned and drifting in position 36° 37'.0 S 179° 12'.0 W at 051030ZJUL.

Navarea XIV warnings in force as at 270001UTC JUN 02.

113.