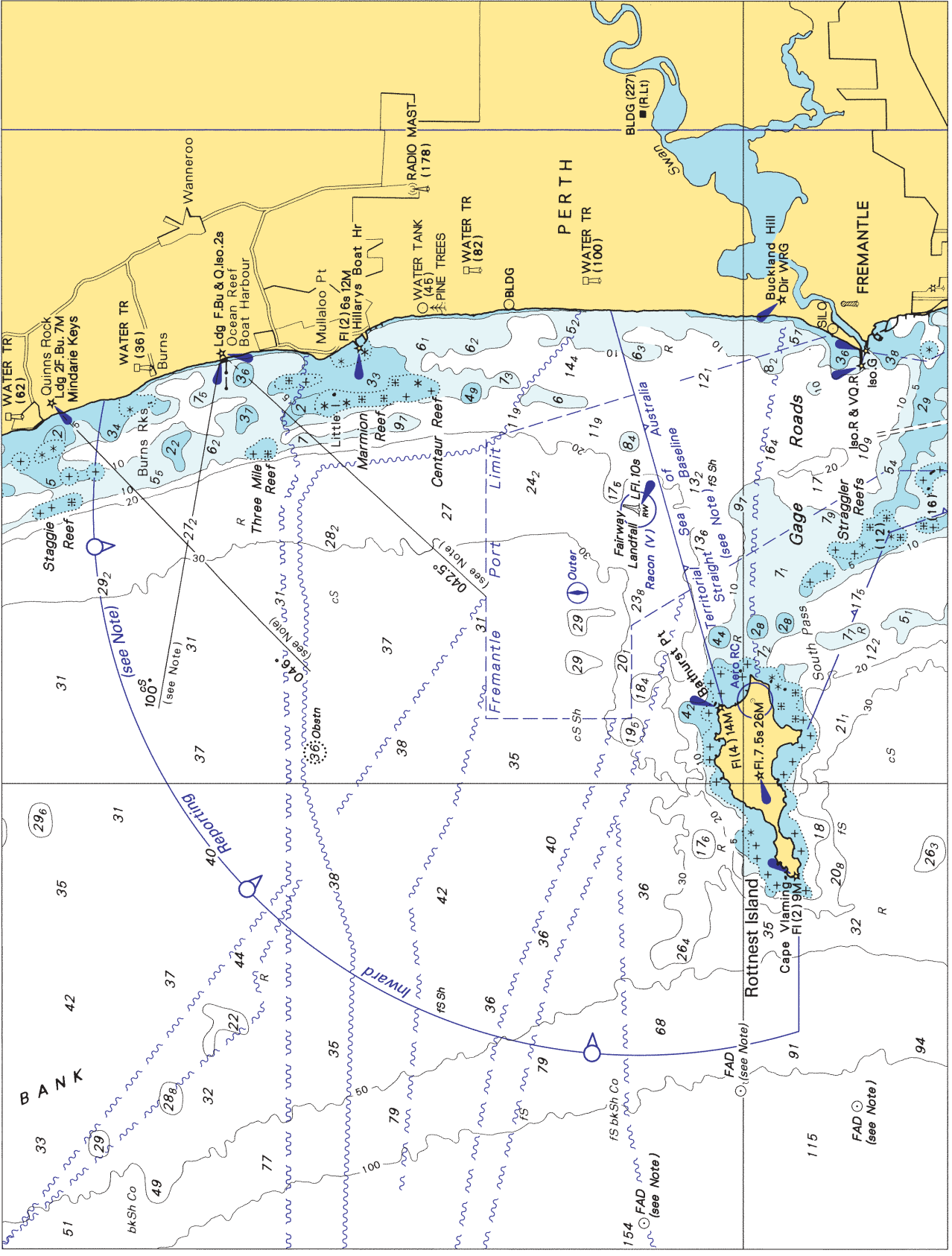


To accompany Australian Notice to Mariners 603/2002



© Commonwealth of Australia 2002

Block for chart Aus 334

To accompany Australian Notice to Mariners 603/2002

INWARDS REPORTING

All vessels bound inwards to Fremantle are to report to Port of Fremantle when crossing the reporting line.

Vessels are required to report their confirmation of pilotage requirement at either the Outer or Inner Pilot Boarding Place.

Vessels proceeding to the Inner Pilot Boarding Place or to anchorage in Gage Roads (draught less than 11 m) are required to indicate their intention to use either East or West Channel.

Port of Fremantle is able to provide VTS information relating to shipping movements.

Note for chart Aus 334