



18 September 2020

Edition 19

AUSTRALIAN NOTICES TO MARINERS

Notices 738 - 792

Published fortnightly by the Australian Hydrographic Office



Australian Notices to Mariners are the authority for correcting charts and publications published by the Australian Hydrographic Office covering Australia, Papua New Guinea, Solomon Islands, Australian Antarctic Territory and Timor-Leste.

Commodore F.T. FREEMAN RAN
Hydrographer of Australia

SECTIONS.

- I. **Australian Notices to Mariners, including blocks and notes.**
- II. **Hydrographic Reports.**

SUPPLEMENTS.

- I. **Tracings**
- II. **Cumulative List of Australian Notices to Mariners.**
- III. **Cumulative List of Temporary and Preliminary Australian Notices to Mariners.**
- IV. **Temporary and Preliminary Notices in force.**

© Commonwealth of Australia 2020

This work is copyright. Apart from any use permitted under the Copyright Act 1968, no part may be reproduced by any process, adapted, communicated or commercially exploited without prior written permission from The Commonwealth represented by the Australian Hydrographic Office.

IMPORTANT NOTICE

This edition of Notices to Mariners includes all significant information affecting AHO products which the AHO has become aware of since the last edition. All reasonable efforts have been made to ensure the accuracy and completeness of the information, including third party information, on which these updates are based. The AHO regards third parties from which it receives information as reliable, however the AHO cannot verify all such information and errors may therefore exist. The AHO does not accept liability for errors in third party information.

GENERAL INSTRUCTIONS

The substance of these notices should be inserted on the charts affected.

Bearings are referred to the true compass and are reckoned clockwise from North; those relating to lights are given as seen by an observer from seaward.

Positions quoted in notices relate to WGS84 which is the horizontal datum for all charts produced by the Australian Hydrographic Office.

The range quoted for a light is its nominal range.

Depths are with reference to the chart datum of each chart. Heights are above mean high water springs or mean higher high water, as appropriate.

The capital letter (P) or (T) after the number of any notice denotes a preliminary or temporary notice respectively, which are contained separately at the end of the permanent notices.

REPORTING OF DANGERS

Mariners are particularly requested to notify the AUSTRALIAN HYDROGRAPHIC OFFICE, Locked Bag 8801 Wollongong, NSW 2500 (Fax 02-4223 6599, e-mail datacentre@hydro.gov.au or, alternatively by filling in and submitting the [Hydrographic Notes](#) forms located on the web site – www.hydro.gov.au), immediately on the discovery of new dangers or suspected dangers to navigation. For changes or defects in aids to navigation notify AusSAR (Fax 02-6230 6868 or email rccaus@amsa.gov.au).

AUTHORISED USE

Copies of Australian notices are available free of charge from the Australian Hydrographic Office (AHO) website (www.hydro.gov.au) and through the eNotices (email) service (www.hydro.gov.au/enotices/enotices.htm).

Individual Notices may be copied for the purpose of inserting Notice substance on official charts and publications. Paper copies may be printed by chart agents and distributed to customers on a cost recovery basis. Participating chart agents are listed on the AHO website as providing a 'Paper Notices to Mariners' service (www.hydro.gov.au/webapps/jsp/agents/agents-list.jsp). Copies of the notices may not be sold for profit without prior written agreement.

NUMERICAL INDEX OF NOTICES TO MARINERS

Edition No 19

Notices	Aus Chart, INT Chart, ENC Cell, AHP, BA Pubs
738	Aus 121, 122, 517, 523, 623, 742, PNG 517, 523, 623
739	Aus 55, 56, 280, 281, 516, 521, 522, PNG 520
740	Amendment to Australian National Tide Tables 2020
741	Aus 198
742	Aus 265
743	Aus 256
744	Aus 247
745	Aus 319, 320
746	Aus 81
747	Aus 137
748	Aus 120, 341, 342
749	Aus 125, 781
750	Aus 802
751	Aus 152
752	Aus 802
753	Aus 168
754(T)	Aus 813, 4602, 4635, 4643, INT 602, 635, 643
755(T)	Aus 255, 826
756(T)	Aus 255, 825, 826
757(T)	Aus 242
758(T)	Aus 262, 263, 830
759(T)	Aus 263, 264
760(T)	Aus 263, 264
761(T)	Aus 263
762(T)	Aus 262
763(T)	Aus 245, 272
764(T)	Aus 244, 245, 271
765(P)	Aus 244, 245, 271
766(T)	Aus 6
767(T)	Aus 256
768(T)	Aus 247
769(T)	Aus 256
770(T)	Aus 256, 827
771(T)	PNG 379, 647
772(T)	Aus 521, PNG 644
773(T)	Aus 4621, INT 621, PNG 379, 512, 647
774(T)	Aus 24
775(T)	Aus 24, 25, 26, 27, 29, 309, 314, 315, 316, 722, 4721, 4722, INT 721, 722
776(T)	Aus 24, 25, 26, 27, 29, 309, 314, 315, 316, 319, 722, 4721, 4722, INT 721, 722
777(T)	Aus 328, 4723, INT 723
778(T)	Aus 328, 4723, 4725, INT 723, 725
779(T)	Aus 64, 69
780(T)	Aus 755
781(T)	Aus 73
782(T)	Aus 117, 754, 755
783(T)	Aus 328, 4723, INT 723
784(T)	Aus 116
785(T)	Aus 57, 327, 742
786(T)	Aus 754
787(T)	Aus 65
788(T)	Aus 135
789(T)	Aus 181
790(T)	Aus 143
791(T)	Aus 143, 157
792(T)	Aus 181, 357, 802

NUMERICAL INDEX OF CHARTS AFFECTED

Edition No 19

Aus Chart	Notices
Aus 6	766(T)
Aus 24	774(T), 775(T), 776(T)
Aus 25	775(T), 776(T)
Aus 26	775(T), 776(T)
Aus 27	775(T), 776(T)
Aus 29	775(T), 776(T)
Aus 55	739
Aus 56	739
Aus 57	785(T)
Aus 64	779(T)
Aus 65	787(T)
Aus 69	779(T)
Aus 73	781(T)
Aus 81	746
Aus 116	784(T)
Aus 117	782(T)
Aus 120	748
Aus 121	738
Aus 122	738
Aus 125	749
Aus 135	788(T)
Aus 137	747
Aus 143	790(T), 791(T)
Aus 152	751
Aus 157	791(T)
Aus 168	753
Aus 181	789(T), 792(T)
Aus 198	741
Aus 242	757(T)
Aus 244	764(T), 765(P)
Aus 245	763(T), 764(T), 765(P)
Aus 247	744, 768(T)
Aus 255	755(T), 756(T)
Aus 256	743, 767(T), 769(T), 770(T)
Aus 262	758(T), 762(T)
Aus 263	758(T), 759(T), 760(T), 761(T)
Aus 264	759(T), 760(T)
Aus 265	742
Aus 271	764(T), 765(P)
Aus 272	763(T)
Aus 280	739
Aus 281	739
Aus 309	775(T), 776(T)
Aus 314	775(T), 776(T)
Aus 315	775(T), 776(T)
Aus 316	775(T), 776(T)
Aus 319	745, 776(T)
Aus 320	745
Aus 327	785(T)
Aus 328	777(T), 778(T), 783(T)
Aus 341	748
Aus 342	748
Aus 357	792(T)
Aus 516	739

Aus Chart	Notices
Aus 517	738
Aus 521	739, 772(T)
Aus 522	739
Aus 523	738
Aus 623	738
Aus 722	775(T), 776(T)
Aus 742	738, 785(T)
Aus 754	782(T), 786(T)
Aus 755	780(T), 782(T)
Aus 781	749
Aus 802	750, 752, 792(T)
Aus 813	754(T)
Aus 825	756(T)
Aus 826	755(T), 756(T)
Aus 827	770(T)
Aus 830	758(T)
Aus 4602	754(T)
Aus 4621	773(T)
Aus 4635	754(T)
Aus 4643	754(T)
Aus 4721	775(T), 776(T)
Aus 4722	775(T), 776(T)
Aus 4723	777(T), 778(T), 783(T)
Aus 4725	778(T)
PNG 379	771(T), 773(T)
PNG 512	773(T)
PNG 517	738
PNG 520	739
PNG 523	738
PNG 623	738
PNG 644	772(T)
PNG 647	771(T), 773(T)

INT Chart	Notices
INT 602	754(T)
INT 621	773(T)
INT 635	754(T)
INT 643	754(T)
INT 721	775(T), 776(T)
INT 722	775(T), 776(T)
INT 723	777(T), 778(T), 783(T)
INT 725	778(T)

738 AUSTRALIA - Products - New Charts, New Editions, Withdrawn Charts

Australian Hydrographic Office , UKHO

New Charts

<i>Chart</i>	<i>Title</i>	<i>Scale</i>	<i>Publication Date</i>	<i>Remarks</i>
PNG 517	Papua New Guinea - North East Coast - Trobriand Islands to Ward Hunt Strait 8° 41'·50 S – 9° 34'·60 S 150° 00'·40 E – 151° 24'·85 E	1:150 000	18 September 2020	Adoption of Papua New Guinea chart numbering. Replaces Aus 517. General updating throughout.
PNG 523	Papua New Guinea - North East Coast - Nassau Bay to Finschhafen 6° 31'·0 S – 7° 24'·4 S 146° 55'·0 E – 148° 19'·4 E	1:150 000	18 September 2020	Adoption of Papua New Guinea chart numbering. Replaces Aus 523. General updating throughout; including new bathymetric data and submarine cable.
PNG 623	Papua New Guinea - South Coast - Approaches to Marshall Lagoon 10° 03'·0 S – 10° 20'·7 S 147° 59'·0 E – 148° 27'·3 E	1:50 000	18 September 2020	Adoption of Papua New Guinea chart numbering. Replaces Aus 623. General updating throughout.

New Editions and Withdrawn Charts

<i>Chart</i>	<i>Title</i>	<i>Scale</i>	<i>Publication Date</i>	<i>Remarks</i>
Aus 742 (Edition 5)	Australia - North West Coast - Western Australia - Rosemary Island to Barrow Island	1:150 000	18 September 2020	New edition with general updating throughout. Chart Aus 742 Edition 4 dated 5 December 2014 is now superseded and must be withdrawn from use.

New Electronic Navigation Chart (Aus ENC)

<i>Cell Name</i>	<i>Title</i>	<i>Publication Date</i>	<i>Remarks</i>
AU5ROB01	Australia - South Australia - Robe including Guichen Bay	10 September 2020	AU5127P4 has been withdrawn.
AU5SEN01	Australia - South Australia - Southend	10 September 2020	AU5127P5 has been withdrawn.
AU5BCH01	Australia - South Australia - Beachport	10 September 2020	AU5127P2 has been withdrawn.
AU5EYR01	Australia - South Australia - Port Eyre	10 September 2020	AU5121P4 has been withdrawn.
AU5WLB01	Australia - South Australia - Waterloo Bay	10 September 2020	AU5121P5 has been withdrawn.
AU5KBY01	Australia - South Australia - Streaky Bay	10 September 2020	AU5121P1 has been withdrawn.
AU5VNB01	Australia - South Australia - Venus Bay	10 September 2020	AU5121P2 has been withdrawn.
AU5CFB01	Australia - South Australia - Coffin Bay	10 September 2020	AU5121P3 has been withdrawn.
AU5PMD01	Australia - South Australia - Port MacDonnell	10 September 2020	AU5348P1 has been withdrawn.

738 AUSTRALIA - Products - New Charts, New Editions, Withdrawn Charts
New Electronic Navigation Chart (Aus ENC) (continued)

AU5THE01	Australia - South Australia - Thevenard and approaches	10 September 2020	AU5122P0 has been withdrawn.
AU5LUB01	Australia - South Australia - Lucky Bay	10 September 2020	AU5777P3 has been withdrawn.
AU5GGG01	Australia - South Australia - Gulf St Vincent - Glenelg Boat Harbour and approaches	10 September 2020	AU5125P1 has been withdrawn.
AU5PEA01	Australia - South Australia - Gulf St Vincent - Penneshaw	10 September 2020	AU5125P4 has been withdrawn.
AU5CJS01	Australia - South Australia - Gulf St Vincent - Cape Jervis	10 September 2020	AU5125P2 has been withdrawn.
AU5PLO01	Australia - South Australia - Spencer Gulf - Port Lincoln	17 September 2020	AU5133P2 has been withdrawn.
AU5BNE01	Australia - Queensland - Brisbane (Brisbane River)	10 September 2020	AU5237X8 has been withdrawn.
AU5ADL01	Australia - South Australia - Gulf St Vincent - Port Adelaide and approaches	17 September 2020	AU5137X8 has been withdrawn.
AU5WIC01	Australia - South Australia - Gulf St Vincent - Wirrina Cove Boat Harbour	17 September 2020	AU5125P3 has been withdrawn.
AU5PVI01	Australia - South Australia - Gulf St Vincent - Port Vincent	17 September 2020	AU5125P6 has been withdrawn.
AU5KLP01	Australia - South Australia - Gulf St Vincent - Klein Point	17 September 2020	AU5139P2 has been withdrawn.
AU5ARD01	Australia - South Australia - Gulf St Vincent - Ardrossan	17 September 2020	AU5139P3 has been withdrawn.
AU5PGI01	Australia - South Australia - Gulf St Vincent - Port Giles	17 September 2020	AU5139P1 has been withdrawn.

Charts withdrawn

<i>Chart</i>	<i>Remarks</i>
Aus 517	On publication of new edition PNG 517
Aus 523	On publication of new edition PNG 523
Aus 623	On publication of new edition PNG 623

Charts withdrawn without replacement

<i>Chart</i>	<i>Title</i>	<i>Scale</i>	<i>Publication Date</i>
Aus 121 Edition 3	Australia - South West Coast - Plans in South Australia (Sheet 6) Plans: Waterloo Bay Blanche Port Venus Bay Port Eyre Coffin Bay Streaky Bay	1:25 000 1:37 500 1:37 500 1:50 000 1:75 000 1:75 000	9 February 2018
Aus 122 Edition 1	Australia - South Coast - South Australia - Yatala Channel Plan: Thevenard Wharf	1:15 000 1:5 000	24 October 2008

Admiralty publication

<i>NP No</i>	<i>Title</i>	<i>Date</i>	<i>Remarks</i>
NP39 & e-NP39	Admiralty Sailing Direction. South Indian Ocean Pilot (Sixteenth Edition) 2020.	24/9/2020	The Fifteenth Edition 2017 is cancelled.

738

AUSTRALIA - Products - New Charts, New Editions, Withdrawn Charts**Chart permanently withdrawn**

Charts listed above as withdrawn no longer meet chart carriage requirements and should be marked as "superseded" and replaced with the new chart/ new edition listed prior to passage through the area covered by the new chart.

When placing orders with a chart agent between notice of forthcoming edition and its publication, mariners should advise whether their order pertains to the current edition or the new edition.

For further details refer to the AHO website at www.hydro.gov.au for new edition and new chart stock arrival information.

739

AUSTRALIA - Products - New Charts and New Editions to be published shortly

Australian Hydrographic Office

New Charts to be published shortly

<i>Chart</i>	<i>Title</i>	<i>Scale</i>	<i>Remarks</i>
PNG 516	Papua New Guinea - North East Coast - Trobriand Islands to Lusancay Islands	1:150 000	Adoption of Papua New Guinea chart numbering. Replaces Aus 516. General updating throughout.
PNG 521	Papua New Guinea - North East Coast - Dyke Ackland Bay to Cape Ward Hunt	1:150 000	Adoption of Papua New Guinea chart numbering. Replaces Aus 521. General updating throughout.
PNG 522	Papua New Guinea - North East Coast - Cape Ward Hunt to Nassau Bay	1:150 000	Adoption of Papua New Guinea chart numbering. Replaces Aus 522. General updating throughout.

New Editions to be published shortly

<i>Chart</i>	<i>Title</i>	<i>Scale</i>	<i>Remarks</i>
Aus 55	Australia - North West Coast - Western Australia - Approaches to Port Walcott	1:50 000	New edition with general updating throughout; including latest bathymetric data.
PNG 520	Papua New Guinea - North East Coast - Cape Nelson to Dyke Ackland Bay	1:150 000	New edition with general updating throughout; including latest bathymetric data.

Charts to be withdrawn

<i>Chart</i>	<i>Remarks</i>
Aus 56	On publication of new edition Aus 55
Aus 516	On publication of new chart PNG 516
Aus 521	On publication of new chart PNG 521
Aus 522	On publication of new chart PNG 522

Charts to be withdrawn without replacement 27 November 2020

<i>Chart</i>	<i>Title</i>	<i>Scale</i>	<i>Publication Date</i>
Aus 280	Australia - East Coast - Queensland - Plans in Queensland		22 February 2019
Edition 5	(Sheet 3) Plans: Magpie Reef to Eden Reef Flinders Group	1:75 000 1:50 000	
Aus 281	Australia - East Coast - Queensland - First Three Mile Opening to Cape Direction	1:75 000	22 February 2019
Edition 3			

740 AUSTRALIA - Product - Amendment to Australian National Tide Tables 2020
 Australian Hydrographic Office

ANTT 2020

Page 341

Amend HOGAN ISLAND To Chart Datum -0.5 to 0.0

Page 362

Amend ALOTAU Correction to Chart Datum ENC AU5624P1 to PG5624P1

Page 363

Delete BROOME Correction to Chart Datum AUS 51 NE 31 MAY 2019 0.0

Page 364

Amend DREGERHAFEN Correction to Chart Datum ENC AU5653P0 to PG5653P0

Page 365

Amend EDEN Correction to Chart Datum ENC AU5192P0 to AU5QDN01

GERALDTON Correction to Chart Datum ENC AU5081P1 to AU5GET01

Page 366 LAKES ENTRANCE OUTER Correction to Chart Datum ENC AU5182P2 to AU5LEN01

Amend

Page 368

Delete NEWCASTLE Correction to Chart Datum AUS 208 NE 08 MAY 2012 0.0

Insert NEWCASTLE Correction to Chart Datum AUS 207 NE 31 MAY 2019 0.0

Page 369

Amend PORT KEMBLA Correction to Chart Datum ENC AU5194P0 to AU5PKL01

PORT WALCOTT Correction to Chart Datum ENC AU5056P0 to AU5PWL01

PORT WELSHPOOL Correction to Chart Datum ENC AU5182P4 to AU5WHL01

Delete PORT KEMBLA Correction to Chart Datum AUS 194 NE 10 AUG 2018 0.0

Page 370

Amend TOWNSVILLE Correction to Chart Datum ENC AU5257P0 to AU5TSV01

Page 371

740 AUSTRALIA - Product - Amendment to Australian National Tide Tables 2020

Amend VICTOR HARBOR Correction to Chart Datum ENC AU5127P1 to AU5VHR01

Page 372

Amend YAMBA Correction to Chart Datum ENC AU5222P0 to AU5YBA01

Delete YAMBA Correction to Chart Datum AUS 220 NC 10 APR 2009 0.0

741 AUSTRALIA - NEW SOUTH WALES - Botany Bay - Molineux Point - Light buoy southwards

Port Authority of New South Wales

Aus 198 [647/2020]

Amend light buoy to *Fl(5)Y.20s* & *Fl.2s* 33° 59'.54 S 151° 12'.49 E

742 AUSTRALIA - QUEENSLAND - Keppel Bay - Depths

Maritime Safety Queensland

Aus 265 [1190/2019]

<i>Insert</i>	contour, between	23° 25'.768 S	150° 59'.230 E
		23° 25'.928 S	150° 58'.966 E
		23° 26'.138 S	150° 58'.844 E
		23° 26'.243 S	150° 58'.825 E
		23° 26'.399 S	150° 58'.852 E
	depth, <i>14₆m</i> , and extend contour NW to enclose	23° 25'.924 S	150° 58'.914 E

<i>Replace</i>	depth, <i>12₅m</i> , with depth, <i>9₉m</i>	23° 25'.94 S	150° 58'.98 E
	depth, <i>5₈m</i> , with depth, <i>4₆m</i> , and extend contour E to enclose	23° 30'.39 S	150° 56'.85 E

<i>Delete</i>	contour, between	23° 25'.77 S	150° 59'.23 E
		23° 26'.01 S	150° 58'.97 E
		23° 26'.40 S	150° 58'.85 E

743 AUSTRALIA - QUEENSLAND - Magnetic Island - Horseshoe Bay - Light buoy

Maritime Safety Queensland Notice 294/2020

Aus 256 [592/2020]

Insert north cardinal conical light buoy, Q, without topmark 19° 07'.02 S 146° 51'.09 E

Delete depth, *1₁m* 19° 07'.1 S 146° 51'.1 E

744 AUSTRALIA - QUEENSLAND - Rosslyn Bay - Depth

Maritime Safety Queensland

Aus 247 (Rosslyn Bay) [1190/2019]

Insert depth, *1₆m*, and extend contour W to enclose 23° 09'.474 S 150° 47'.157 E

745 AUSTRALIA - WESTERN AUSTRALIA - Browse Island - Scientific instrument northwestwards

Shell Australia

Aus 319 [480/2020]

Insert orange spherical light buoy, *Fl(5)Y.20s*, without topmark 13° 49'.11 S 123° 16'.80 E

Delete light buoy 13° 48'.7 S 123° 17'.2 E

Aus 320 [1146/2019]

Insert orange spherical light buoy, *Fl(5)Y.20s*, without topmark 13° 49'.11 S 123° 16'.80 E

Delete light buoy 13° 48'.7 S 123° 17'.2 E

746 AUSTRALIA - WESTERN AUSTRALIA - Geraldton - Champion Bay - Marine farm

Former Notice - 536(T)/2017 is cancelled
Indian Ocean Fresh Australia

Aus 81 [541/2020]

Insert	dashed line, between	28° 44'.619 S	114° 35'.220 E
		28° 44'.619 S	114° 34'.851 E
		28° 44'.781 S	114° 34'.851 E
		28° 44'.781 S	114° 35'.220 E
		28° 44'.619 S	114° 35'.220 E
Move	marine farm symbol with legend, (see Note)	28° 44'.73 S	114° 35'.11 E
	to	28° 44'.700 S	114° 35'.040 E

747 AUSTRALIA - SOUTH AUSTRALIA - Port Adelaide - Light beacons

Department for Infrastructure and Transport SA Notice 22/2020

Aus 137 [543/2020]

Amend	light beacon to Q	34° 45'.86 S	138° 29'.76 E
	light beacon to <i>F.Bu</i> & <i>Fl.R.2s No44</i>	34° 48'.87 S	138° 30'.88 E

748 AUSTRALIA - SOUTH AUSTRALIA - Port Eyre to Coffin Bay - Chart withdrawn; ZOC diagram; chart limits; chart note; infrastructure

Australian Hydrographic Office

Note: position of existing chart notes may vary on certain charts.

Aus 120 [64/2020]

Insert	ESSA limit, between	32° 22'.70 S	133° 07'.32 E
		32° 23'.00 S	133° 07'.32 E
		32° 23'.00 S	133° 03'.80 E
	accompanying ZOC diagram	32° 06'.0 S	133° 10'.0 E
	accompanying note, ELECTRONIC NAVIGATIONAL CHART (ENC)	32° 10'.0 S	133° 22'.0 E
	accompanying block A	32° 11'.0 S	133° 37'.0 E
Amend	Thevenard MHHW to 1.6	32° 05'.2 S	133° 25'.4 E
Delete	ESSA limit, with legend ESSA (see Note), between	32° 22'.7 S	133° 07'.3 E
		32° 30'.7 S	133° 11'.3 E
	note, OMISSIONS FROM CHART	32° 09'.0 S	133° 16'.5 E

Aus 120 (Murat Bay) [64/2020]

Insert	accompanying block B	32° 09'.1 S	133° 39'.7 E
Delete	ESSA limit with legends, ESSA (see Note), centred on	32° 07'.7 S	133° 37'.4 E
	magenta limits with legend, Aus 122, centred on	32° 08'.7 S	133° 37'.8 E

Aus 341 [1024/2018]

Insert	magenta dashed line with legend, <i>Streaky Bay Harbour Limit</i> , between	32° 32'.58 S	133° 51'.13 E
		32° 54'.50 S	134° 03'.76 E
	accompanying ZOC diagram	31° 37'.0 S	133° 32'.0 E
	accompanying note, MARINE FARMS	31° 51'.5 S	134° 12'.0 E
	accompanying note, ELECTRONIC NAVIGATIONAL CHART (ENC)	31° 55'.5 S	134° 12'.0 E
	accompanying block	31° 58'.8 S	132° 30'.0 E
	light beacon, <i>Fl.R.2s 3M</i> , with port lateral topmark	32° 34'.36 S	134° 09'.91 E
	magenta legend, <i>ENC (see Note)</i> , centred on	32° 34'.5 S	134° 02'.5 E
Replace	obstn depth, 1 ₉ m, with depth, 2 ₁ m	32° 46'.5 S	134° 12'.6 E
Delete	magenta limits with legend, Aus 121, centred on	32° 37'.0 S	134° 05'.0 E

Aus 342 [1046/2019]

Insert	magenta dashed line with legend, <i>Streaky Bay Harbour Limit</i> , between	32° 32'.58 S	133° 51'.13 E
		32° 54'.50 S	134° 03'.76 E
	magenta dashed line with legend, <i>Coffin Bay Harbour Limit</i> , between	34° 25'.74 S	135° 12'.60 E
		34° 21'.78 S	135° 21'.43 E
	light beacon, <i>Fl.R.2s 3M</i> , with port lateral topmark	32° 34'.36 S	134° 09'.91 E
	magenta legend, <i>ENC (see Note)</i> , centred on	32° 34'.5 S	134° 02'.5 E
	accompanying note, ENVIRONMENTALLY SENSITIVE SEA AREA (ESSA)	32° 49'.0 S	135° 30'.0 E
	accompanying note, ELECTRONIC NAVIGATIONAL CHART (ENC)	32° 52'.5 S	135° 20'.0 E
	accompanying ZOC diagram	33° 10'.0 S	135° 15'.0 E
	accompanying block	33° 26'.0 S	134° 50'.0 E
	magenta legend, <i>ENC (see Note)</i> , centred on	34° 23'.0 S	135° 17'.0 E
	legend, <i>Channel marked by beacons</i> , centred on	34° 32'.9 S	135° 21'.1 E
Replace	obstn depth, 1 ₉ m, with depth, 2 ₁ m	32° 46'.5 S	134° 12'.6 E
Delete	magenta limits with legend, Aus 121, centred on	32° 37'.0 S	134° 05'.0 E
	magenta limits with legend, Aus 121, centred on	34° 30'.0 S	135° 21'.0 E

749 AUSTRALIA - SOUTH AUSTRALIA - Port Stanvac - Curlew Point - Restricted area

Australian Hydrographic Office

Aus 125 (Port Stanvac) [150/2020]

Insert	prohibited area with radius 500m, centred on	35° 05'.789 S	138° 26'.347 E
--------	--	---------------	----------------

Aus 781 [150/2020]

Insert	prohibited area with radius 0.27M, centred on	35° 05'.79 S	138° 26'.35 E
--------	---	--------------	---------------

750 AUSTRALIA - VICTORIA - Walkerville - Light sector

UKHO

Aus 802 [NE 21/8/2020]

Amend	light sector to G	38° 51'.1 S	146° 00'.9 E
-------	-------------------	-------------	--------------

751 AUSTRALIA - VICTORIA - Western Port - Hastings - Light beacon

Parks Victoria Notice 245/2020

Aus 152 (Hastings Bight) [113/2019]

Replace	beacon with east cardinal light beacon, Q(3)10s No30, with topmark	38° 18'.64 S	145° 12'.04 E
---------	--	--------------	---------------

752 AUSTRALIA - BASS STRAIT - Deal Island - Nomenclature

UKHO

Aus 802 [750/2020]

Insert	name, <i>Garden Cove</i>	39° 27'.24 S	147° 19'.62 E
--------	--------------------------	--------------	---------------

753 AUSTRALIA - TASMANIA - Launceston - Light buoy

Marine and Safety Tasmania Notice M143/2020

Aus 168 (Launceston Wharves) [28/2020]

Insert	port lateral spar buoy, without topmark	41° 26'.068 S	147° 07'.722 E
--------	---	---------------	----------------

754(T)/2020 AUSTRALIA - NEW SOUTH WALES - Cape Byron - Light restored*Former Notice* - 419(T)/2020 is cancelled

Australian Maritime Safety Authority Auscoast Warning 270/2020

Cancel this notice on receipt.

Chart formerly affected - Aus 813 - Aus 4602 (INT 602) - Aus 4635 (INT 635) - Aus 4643 (INT 643)**755(T)/2020 AUSTRALIA - QUEENSLAND - Abbot Point - Nav aids off station; nav aids destroyed; depths unreliable; obstructions***Former Notice* - 370(T)/2017 is cancelled

Maritime Safety Queensland

Cancel this notice on receipt.

Chart formerly affected - Aus 255 - Aus 826**756(T)/2020 AUSTRALIA - QUEENSLAND - Abbot Point - Scientific instruments recovered***Former Notice* - 659(T)/2016 is cancelled

Maritime Safety Queensland

Cancel this notice on receipt.

Chart formerly affected - Aus 255 - Aus 825 - Aus 826**757(T)/2020 AUSTRALIA - QUEENSLAND - Bundaberg - Burnett River - Town Reach - Obstruction removed***Former Notice* - 1256(T)/2019 is cancelled

Maritime Safety Queensland

Cancel this notice on receipt.

Chart formerly affected - Aus 242**758(T)/2020 AUSTRALIA - QUEENSLAND - Cairns - Light restored***Former Notice* - 576(T)/2018 is cancelled

Maritime Safety Queensland

Cancel this notice on receipt.

Chart formerly affected - Aus 262 - Aus 263 - Aus 830**759(T)/2020 AUSTRALIA - QUEENSLAND - Cairns - Smiths Creek - Dredging operations completed***Former Notice* - 833(T)/2019 is cancelled

Maritime Safety Queensland

Cancel this notice on receipt.

Chart formerly affected - Aus 263 - Aus 264**760(T)/2020 AUSTRALIA - QUEENSLAND - Cairns - Dredging operations***Former Notice* - 1216(T)/2019 is cancelled

Maritime Safety Queensland Notice 322(T)/2020

Dredging operations are in progress at the naval base (16° 56'.20 S 145° 46'.73 E).

The dredge will deploy anchors marked by light buoys, *Fl.4s*.

Barges and support vessels are on site and may impact on some harbour operations in the vicinity of the naval base.

Mariners are advised to navigate with caution in the area.

Chart temporarily affected - Aus 263 - Aus 264

761(T)/2020 AUSTRALIA - QUEENSLAND - Cairns - Trinity Inlet - Harbour works completed

Former Notice - 1097(T)/2019 is cancelled
Maritime Safety Queensland

Cancel this notice on receipt.

Chart formerly affected - Aus 263

762(T)/2020 AUSTRALIA - QUEENSLAND - Cairns - Light beacon restored

Former Notice - 892(T)/2019 is cancelled
Maritime Safety Queensland

Cancel this notice on receipt.

Chart formerly affected - Aus 262

763(T)/2020 AUSTRALIA - QUEENSLAND - Gladstone - Curtis Island - Harbour works

Maritime Safety Queensland Notice 317(T)/2020

Vessels *AMS Shine*, *Cobia*, *Curlew* and support vessel *Old Yellow* are conducting remediation works on the pontoons and berthing piles at the APLNG RORO berth (23° 45'.15 S 151° 10'.65 E).

Vessels will display appropriate lights and shapes; and will monitor VHF Ch 13, Ch 15 and Ch 16.

Mariners are advised to navigate with caution in the area.

Chart temporarily affected - Aus 245 - Aus 272

764(T)/2020 AUSTRALIA - QUEENSLAND - Gladstone - Clinton Channel - Light buoys recovered

Former Notice - 612(T)/2020 is cancelled
Maritime Safety Queensland Notice 17/2020, 267(T)/2020, 303(T)/2020, 309(T)/2020

Cancel this notice on receipt.

Chart formerly affected - Aus 244 - Aus 245 - Aus 271

765(P)/2020 AUSTRALIA - QUEENSLAND - Gladstone - Auckland Channel to Clinton Channel - Nav aids

Maritime Safety Queensland Notice 305/2020

A port lateral light beacon, *Fl.R.4s A8*, exists in position 23° 49'.74 S 151° 15'.30 E.

The port lateral light buoy, *Fl.R.4s A8* (23° 49'.77 S 151° 15'.30 E), has been withdrawn.

A light beacon, *VQ(9)10s CB6*, with west cardinal topmark exists in position 23° 49'.01 S 151° 14'.70 E.

Chart which will be affected - Aus 244 - Aus 245 - Aus 271

766(T)/2020 AUSTRALIA - QUEENSLAND - Karumba - Alligator Point - Wreck salvaged

Former Notice - 273(T)/2019 is cancelled
Maritime Safety Queensland Notice 315/2020

Cancel this notice on receipt.

Chart formerly affected - Aus 6

767(T)/2020 AUSTRALIA - QUEENSLAND - Magnetic Island - Bremner Point - Scientific instrument recovered

Former Notice - 379(T)/2014 is cancelled
Maritime Safety Queensland

Cancel this notice on receipt.

Chart formerly affected - Aus 256

768(T)/2020 AUSTRALIA - QUEENSLAND - Rosslyn Bay - Dredging operations completed

Former Notice - 662(T)/2019 is cancelled
Maritime Safety Queensland

Cancel this notice on receipt.

Chart formerly affected - Aus 247

769(T)/2020 AUSTRALIA - QUEENSLAND - Townsville - Ross River - Obstruction removed; light buoy removed

Former Notice - 615(T)/2020 is cancelled
Maritime Safety Queensland

Cancel this notice on receipt.

Chart formerly affected - Aus 256

770(T)/2020 AUSTRALIA - QUEENSLAND - Townsville - Cleveland Bay to West Channel - Scientific instruments recovered

Former Notice - 380(T)/2017 is cancelled
Maritime Safety Queensland

Cancel this notice on receipt.

Chart formerly affected - Aus 256 - Aus 827

771(T)/2020 PAPUA NEW GUINEA - Boera Head - Light unlit

National Maritime Safety Authority PNG Warning 6/2019

The light, *Fl.2-5s 33m 10M* (9° 23'.39 S 147° 00'.85 E), is unlit.

Chart temporarily affected - PNG 379 - PNG 647

772(T)/2020 PAPUA NEW GUINEA - Oro Bay - Light relit

Former Notice - 630(T)/2020 is cancelled
National Maritime Safety Authority PNG Coastal Navigation Warning 35/2020

Cancel this notice on receipt.

Chart formerly affected - Aus 521 - PNG 644

773(T)/2020 PAPUA NEW GUINEA - Pananiu Island - Light relit

Former Notice - 631(T)/2020 is cancelled
National Maritime Safety Authority PNG Warning 34/2020

Cancel this notice on receipt.

Chart formerly affected - Aus 4621 (INT 621) - PNG 379 - PNG 512 - PNG 647

774(T)/2020 AUSTRALIA - NORTHERN TERRITORY - Darwin - Mooring Buoy

Department of Infrastructure, Planning and Logistics NT NTM 49(T)/2020

A lit yellow mooring buoy, *Iso. Y*, exists in position 12° 27'.83 S 130° 49'.70 E.

Chart temporarily affected - Aus 24

775(T)/2020 AUSTRALIA - NORTHERN TERRITORY - Darwin to Sahul Banks - Survey and geotechnical operations
Guardian Geomatics

MV *Offshore Guardian* with a towed array of up to 300m is conducting survey and geotechnical operations between the following positions:

12° 35'.10 S 130° 55'.68 E
 12° 35'.71 S 130° 54'.75 E
 12° 35'.57 S 130° 53'.49 E
 12° 34'.83 S 130° 52'.22 E
 12° 31'.55 S 130° 49'.80 E
 12° 27'.68 S 130° 47'.84 E
 12° 23'.65 S 130° 44'.46 E
 12° 21'.54 S 130° 40'.69 E
 12° 18'.62 S 130° 31'.25 E
 12° 16'.30 S 130° 29'.71 E
 11° 33'.26 S 128° 01'.35 E
 12° 07'.90 S 126° 53'.29 E
 12° 08'.74 S 125° 50'.95 E
 12° 02'.70 S 125° 22'.09 E
 12° 00'.05 S 124° 32'.26 E.

Mariners are advised to navigate with caution in the area.

Chart temporarily affected - Aus 24 - Aus 25 - Aus 26 - Aus 27 - Aus 29 - Aus 309 - Aus 314 - Aus 315 - Aus 316 - Aus 722 - Aus 4721 (INT 721) - Aus 4722 (INT 722)

776(T)/2020 AUSTRALIA - NORTHERN TERRITORY - Darwin to Sahul Banks - Survey operations

Former Notice - 672(T)/2020 is cancelled

Guardian Geomatics

Cancel this notice on receipt.

Chart formerly affected - Aus 24 - Aus 25 - Aus 26 - Aus 27 - Aus 29 - Aus 309 - Aus 314 - Aus 315 - Aus 316 - Aus 319 - Aus 722 - Aus 4721 (INT 721) - Aus 4722 (INT 722)

777(T)/2020 AUSTRALIA - WESTERN AUSTRALIA - Barrow Island - Drill rig northwestwards

MODU Development Driller 1

Drill rig *Development Driller 1* is conducting drilling operations in position 20° 24'.43 S 114° 50'.83 E.

Chart temporarily affected - Aus 328 - Aus 4723 (INT 723)

778(T)/2020 AUSTRALIA - WESTERN AUSTRALIA - Barrow Island - Drill rig northwestwards moved

Former Notice - 1334(T)/2019 is cancelled

MODU Development Driller 1

Cancel this notice on receipt.

Chart formerly affected - Aus 328 - Aus 4723 (INT 723) - Aus 4725 (INT 725)

779(T)/2020 AUSTRALIA - WESTERN AUSTRALIA - Beadon Bay to Port of Ashburton - Scientific instruments recovered

Former Notice - 1154(T)/2018 is cancelled

Department of Transport WA

Cancel this notice on receipt.

Chart formerly affected - Aus 64 - Aus 69

780(T)/2020 AUSTRALIA - WESTERN AUSTRALIA - Bunker Bay - Scientific instruments

Department of Transport WA Notice 85/2020

Special light buoys, *Fl. Y. 4s*, exist in positions 33° 32'.37 S 115° 02'.26 E and 33° 32'.52 S 115° 02'.73 E.

Chart temporarily affected - Aus 755

781(T)/2020 AUSTRALIA - WESTERN AUSTRALIA - Carnarvon - Scientific instrument

Department of Transport WA

A scientific instrument marked by a special light buoy, *Fl. Y. 3s*, exists on the seabed in position 24° 54'.55 S 113° 37'.50 E.

Chart temporarily affected - Aus 73

782(T)/2020 AUSTRALIA - WESTERN AUSTRALIA - Kwinana - Harbour works

Fremantle Ports Notice 11(T)/2020

Remediation works are in progress at Kwinana Grain Jetty (32° 15'.30 S 115° 44'.75 E).

A 50m exclusion zone exists around the jetty and only authorised commercial vessels and vessels associated with the works are permitted to enter.

Mariners are advised to navigate with caution in the area.

Chart temporarily affected - Aus 117 - Aus 754 - Aus 755

783(T)/2020 AUSTRALIA - WESTERN AUSTRALIA - Montebello Islands - Drill rig northwestwards moved

Former Notice - 676(T)/2020 is cancelled

Australian Maritime Safety Authority

Cancel this notice on receipt.

Chart formerly affected - Aus 328 - Aus 4723 (INT 723)

784(T)/2020 AUSTRALIA - WESTERN AUSTRALIA - Port Geographe Marina - Dredging operations completed

Former Notice - 978(T)/2019 is cancelled

Department of Transport WA

Cancel this notice on receipt.

Chart formerly affected - Aus 116

785(T)/2020 AUSTRALIA - WESTERN AUSTRALIA - Roly Rock - Drill rig westwards

Australian Maritime Safety Authority

Drill rig *Valaris DPS-1* is moored in position 20° 30'.0 S 116° 27'.0 E.

Chart temporarily affected - Aus 57 - Aus 327 - Aus 742

786(T)/2020 AUSTRALIA - WESTERN AUSTRALIA - Rottnest Island - Scientific instrument recovered

Former Notice - 631(T)/2017 is cancelled

Curtin University

Cancel this notice on receipt.

Chart formerly affected - Aus 754

787(T)/2020 AUSTRALIA - WESTERN AUSTRALIA - Varanus Island - Navaid replacement works completed

Former Notice - 699(T)/2018 is cancelled
Department of Transport WA

Cancel this notice on receipt.

Chart formerly affected - Aus 65**788(T)/2020 AUSTRALIA - SOUTH AUSTRALIA - Whyalla - Leading line altered**

Former Notice - 680(T)/2020 is cancelled
OceanXpress Shipping & Logistics

The port lateral light beacon, *F.R No14* (33° 01'.08 S 137° 35'.58 E), has been repositioned and therefore the charted leading line of 216.5° is no longer accurate and should not be used for navigation.

Mariners are advised to navigate with caution in the area.

Chart temporarily affected - Aus 135**789(T)/2020 AUSTRALIA - VICTORIA - Corner Inlet - Light buoy restored**

Former Notice - 725(T)/2020 is cancelled
Gippsland Ports Notice 244/2020

Cancel this notice on receipt.

Chart formerly affected - Aus 181**790(T)/2020 AUSTRALIA - VICTORIA - Port Phillip - Queenscliff - Harbour works**

Parks Victoria Notice 254(T)/2020

Harbour works associated with the upgrade of the Ferry Terminal (38° 15'.94 S 144° 40'.38 E) are in progress.

Barges and a support vessels are on site and will display appropriate lights and shapes.

Mariners are advised to navigate with caution in the area.

Chart temporarily affected - Aus 143**791(T)/2020 AUSTRALIA - VICTORIA - Port Phillip - Grassy Point - Light beacons restored**

Former Notice - 180(T)/2020 is cancelled
Parks Victoria Notice 251/2020

Cancel this notice on receipt.

Chart formerly affected - Aus 143 - Aus 157**792(T)/2020 AUSTRALIA - VICTORIA - Seal Islands - Scientific instruments eastwards**

Former Notice - 297(T)/2020 is cancelled
Star of the South Wind Farm

Scientific instruments exist as follows:

<i>Position</i>	<i>Depth below surface</i>
38° 41'.61 S 146° 46'.56 E	5m
38° 42'.19 S 147° 05'.98 E	17m
38° 47'.27 S 146° 35'.33 E	3.7m
38° 50'.14 S 146° 46'.04 E	17m
38° 50'.80 S 146° 55'.72 E	17m
38° 51'.07 S 146° 53'.67 E	17m
38° 51'.43 S 146° 54'.82 E	17m
38° 51'.65 S 147° 06'.24 E	32m
38° 52'.01 S 147° 17'.75 E	32m
38° 52'.23 S 146° 55'.07 E	17m.

Chart temporarily affected - Aus 181 - Aus 357 - Aus 802

II

HYDROGRAPHIC REPORTS

NIL

To accompany Australian Notice to Mariners 748/2020

ELECTRONIC NAVIGATIONAL CHART (ENC)

Larger scale ENC content exists in this area. When using electronic navigation systems, certain vessels (e.g. restricted by depth or size) may benefit from the additional level of detail shown in the largest scale ENC product available.

Note for chart Aus 120

To accompany Australian Notice to Mariners 748/2020

ELECTRONIC NAVIGATIONAL CHART (ENC)

Larger scale ENC content exists in this area. When using electronic navigation systems, certain vessels (e.g. restricted by depth or size) may benefit from the additional level of detail shown in the largest scale ENC product available.

Note for chart Aus 341

To accompany Australian Notice to Mariners 748/2020

ELECTRONIC NAVIGATIONAL CHART (ENC)

Larger scale ENC content exists in this area. When using electronic navigation systems, certain vessels (e.g. restricted by depth or size) may benefit from the additional level of detail shown in the largest scale ENC product available.

Note for chart Aus 342

To accompany Australian Notice to Mariners 748/2020

MARINE FARMS

Marine farms, which may be floating or fixed structures and their associated moorings should be avoided. The farms are generally marked by buoys or beacons, which may be lit. Their charted positions are approximate.

Note for chart Aus 341

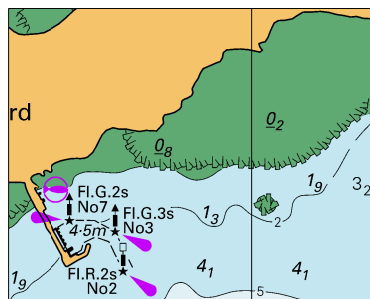
To accompany Australian Notice to Mariners 748/2020

ENVIRONMENTALLY SENSITIVE SEA AREA (ESSA)

Areas of this chart are Environmentally Sensitive Sea Areas (ESSA). Areas within this marine protected area have restrictions on access and activities. For details see Mariners Handbook for Australian Waters AHP 20.

Note for chart Aus 342

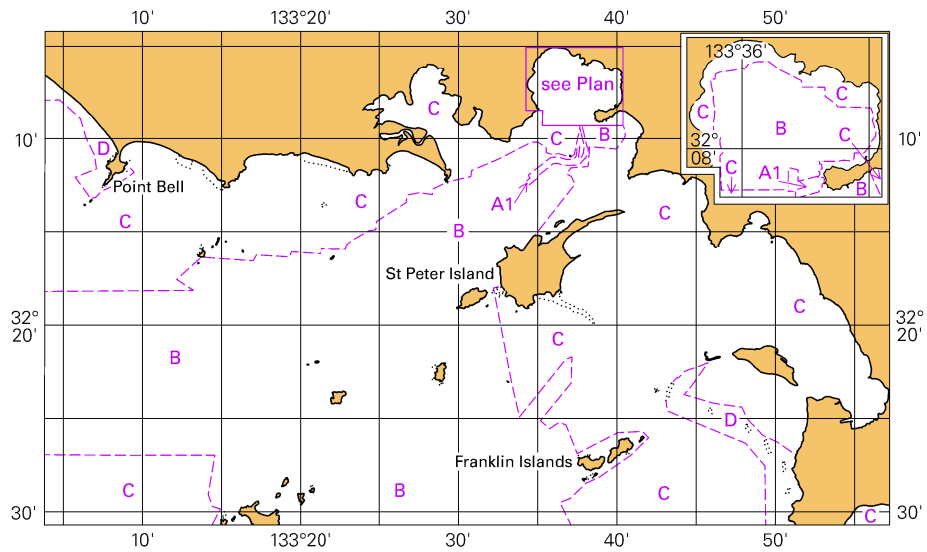
To accompany Australian Notice to Mariners 748/2020



© Commonwealth of Australia 2020
Block B for chart Aus 120 (49.0 x 38.6mm)

[illegible]

To accompany Australian Notice to Mariners 748/2020

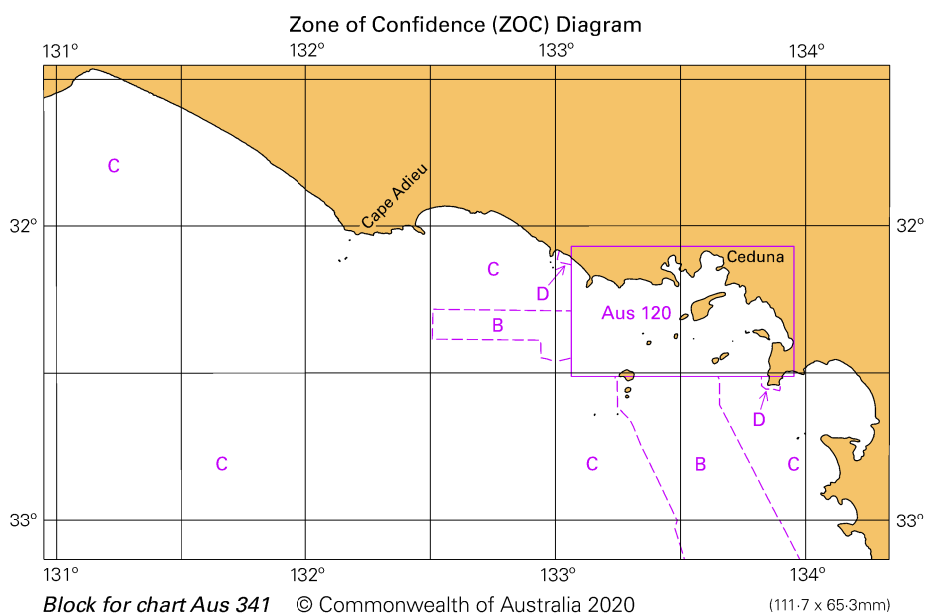


© Commonwealth of Australia 2020

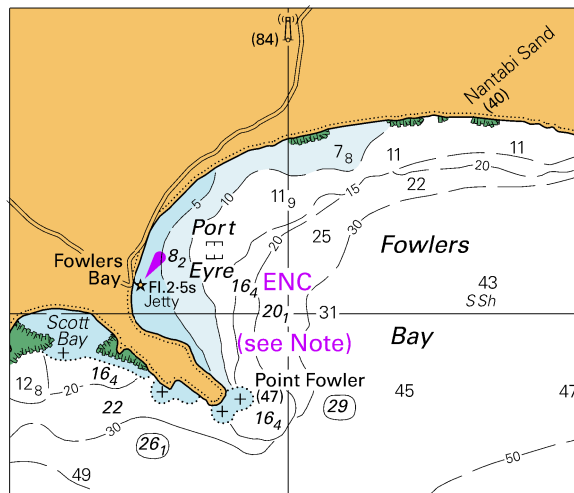
Block for chart Aus 120

(111.7 x 65.3mm)

To accompany Australian Notice to Mariners 748/2020



To accompany Australian Notice to Mariners 748/2020

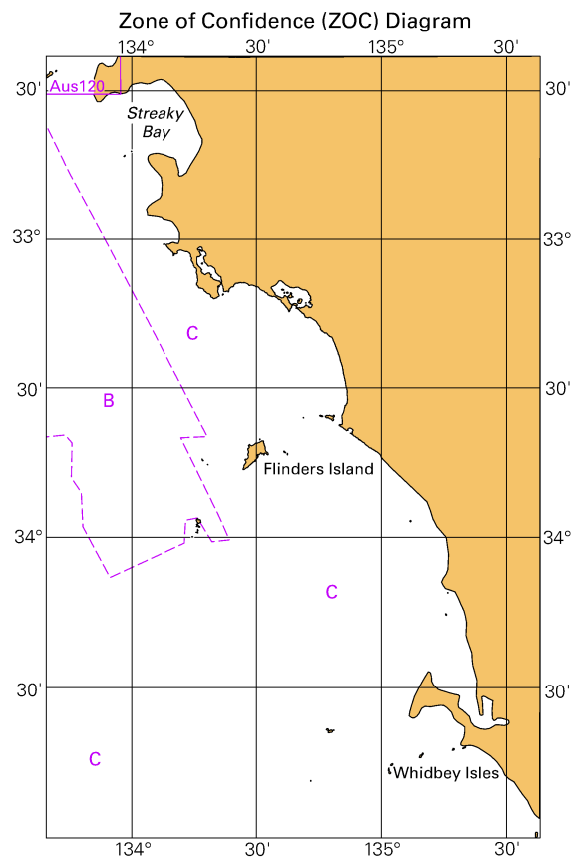


© Commonwealth of Australia 2020

Block for chart Aus 341

(75.9 x 64.2mm)

To accompany Australian Notice to Mariners 748/2020



© Commonwealth of Australia 2020

Block for chart Aus 342

(65.3 x 103.3mm)

