



24 July 2020

Edition 15

AUSTRALIAN NOTICES TO MARINERS

Notices 525 - 584

Published fortnightly by the Australian Hydrographic Office



Australian Notices to Mariners are the authority for correcting charts and publications published by the Australian Hydrographic Office covering Australia, Papua New Guinea, Solomon Islands, Australian Antarctic Territory and Timor-Leste.

Commodore F.T. FREEMAN RAN
Hydrographer of Australia

SECTIONS.

- I. **Australian Notices to Mariners, including blocks and notes.**
- II. **Hydrographic Reports.**

SUPPLEMENTS.

- I. **Tracings**
- II. **Cumulative List of Australian Notices to Mariners.**
- III. **Cumulative List of Temporary and Preliminary Australian Notices to Mariners.**
- IV. **Temporary and Preliminary Notices in force.**

© Commonwealth of Australia 2020

This work is copyright. Apart from any use permitted under the Copyright Act 1968, no part may be reproduced by any process, adapted, communicated or commercially exploited without prior written permission from The Commonwealth represented by the Australian Hydrographic Office.

IMPORTANT NOTICE

This edition of Notices to Mariners includes all significant information affecting AHO products which the AHO has become aware of since the last edition. All reasonable efforts have been made to ensure the accuracy and completeness of the information, including third party information, on which these updates are based. The AHO regards third parties from which it receives information as reliable, however the AHO cannot verify all such information and errors may therefore exist. The AHO does not accept liability for errors in third party information.

GENERAL INSTRUCTIONS

The substance of these notices should be inserted on the charts affected.

Bearings are referred to the true compass and are reckoned clockwise from North; those relating to lights are given as seen by an observer from seaward.

Positions quoted in notices relate to WGS84 which is the horizontal datum for all charts produced by the Australian Hydrographic Office.

The range quoted for a light is its nominal range.

Depths are with reference to the chart datum of each chart. Heights are above mean high water springs or mean higher high water, as appropriate.

The capital letter (P) or (T) after the number of any notice denotes a preliminary or temporary notice respectively, which are contained separately at the end of the permanent notices.

REPORTING OF DANGERS

Mariners are particularly requested to notify the AUSTRALIAN HYDROGRAPHIC OFFICE, Locked Bag 8801 Wollongong, NSW 2500 (Fax 02-4223 6599, e-mail datacentre@hydro.gov.au or, alternatively by filling in and submitting the [Hydrographic Notes](#) forms located on the web site – www.hydro.gov.au), immediately on the discovery of new dangers or suspected dangers to navigation. For changes or defects in aids to navigation notify AusSAR (Fax 02-6230 6868 or email rccaus@amsa.gov.au).

AUTHORISED USE

Copies of Australian notices are available free of charge from the Australian Hydrographic Office (AHO) website (www.hydro.gov.au) and through the eNotices (email) service (www.hydro.gov.au/enotices/enotices.htm).

Individual Notices may be copied for the purpose of inserting Notice substance on official charts and publications. Paper copies may be printed by chart agents and distributed to customers on a cost recovery basis. Participating chart agents are listed on the AHO website as providing a 'Paper Notices to Mariners' service (www.hydro.gov.au/webapps/jsp/agents/agents-list.jsp). Copies of the notices may not be sold for profit without prior written agreement.

NUMERICAL INDEX OF NOTICES TO MARINERS

Edition No 15

Notices	Aus Chart, INT Chart, ENC Cell, AHP, BA Pubs
525	Aus 194, 195, 219, 220, 221, 230, 673, 678, PNG 673, 678
526	Aus 191, 193, 196, 197, 208, 215, 216, 217, 222, 257, 280, 281, 379
527	AusTides 2020
528	Aus 808
529	Aus 810, 811, 812, 813, 814
530	Aus 263, 264
531	Aus 245
532	Aus 241
533	Aus 236
534	Aus 236
535	Aus 386
536	Aus 386, 548
537	Aus 293, 299
538	Aus 316, 724
539	Aus 15
540	Aus 51
541	Aus 81
542	Aus 328, 4723, INT 723
543	Aus 137
544	Aus 182
545	Aus 158
546	Aus 181
547	Aus 150, 151, 801
548	SLB 202
549(T)	Aus 195
550(T)	Aus 194
551(T)	Aus 244, 245, 247, 271, 272
552(T)	Aus 814
553(T)	Aus 230
554(T)	Aus 230
555(T)	Aus 814
556(T)	Aus 230
557(T)	Aus 230
558(T)	Aus 249, 250, 823
559(T)	Aus 259
560(T)	Aus 6
561(T)	Aus 814
562(T)	Aus 230
563(T)	Aus 4604, 4622, INT 604, 622, PNG 545, 554, 680
564(T)	PNG 673
565(T)	Aus 673
566(T)	PNG 653
567(T)	Aus 516, 4621, INT 621, PNG 515, 637
568(T)	PNG 646
569(T)	Aus 4621, INT 621, PNG 508, 512, 628
570(P)	Aus 386
571(T)	Aus 386, 678
572(T)	Aus 673
573(T)	Aus 4604, 4620, 4621, INT 604, 620, 621, PNG 518, 519
574(T)	Aus 319, 320
575(T)	Aus 116, 755
576(T)	Aus 328, 329, 4723, 4725, INT 723, 725
577(T)	Aus 327
578(T)	Aus 357, 487, 805
579(P)	Aus 181
580(T)	Aus 143, 155
581(T)	Aus 154
582(T)	Aus 143, 158
583(T)	Aus 150, 151
584(T)	Aus 172

NUMERICAL INDEX OF CHARTS AFFECTED

Edition No 15

Aus Chart	Notices
Aus 6	560(T)
Aus 15	539
Aus 51	540
Aus 81	541
Aus 116	575(T)
Aus 137	543
Aus 143	580(T), 582(T)
Aus 150	547, 583(T)
Aus 151	547, 583(T)
Aus 154	581(T)
Aus 155	580(T)
Aus 158	545, 582(T)
Aus 172	584(T)
Aus 181	546, 579(P)
Aus 182	544
Aus 191	526
Aus 193	526
Aus 194	525, 550(T)
Aus 195	525, 549(T)
Aus 196	526
Aus 197	526
Aus 208	526
Aus 215	526
Aus 216	526
Aus 217	526
Aus 219	525
Aus 220	525
Aus 221	525
Aus 222	526
Aus 230	525, 553(T), 554(T), 556(T), 557(T), 562(T)
Aus 236	533, 534
Aus 241	532
Aus 244	551(T)
Aus 245	531, 551(T)
Aus 247	551(T)
Aus 249	558(T)
Aus 250	558(T)
Aus 257	526
Aus 259	559(T)
Aus 263	530
Aus 264	530
Aus 271	551(T)
Aus 272	551(T)
Aus 280	526
Aus 281	526
Aus 293	537
Aus 299	537
Aus 316	538
Aus 319	574(T)
Aus 320	574(T)
Aus 327	577(T)
Aus 328	542, 576(T)
Aus 329	576(T)
Aus 357	578(T)

Aus Chart	Notices
Aus 379	526
Aus 386	535, 536, 570(P), 571(T)
Aus 487	578(T)
Aus 516	567(T)
Aus 548	536
Aus 673	525, 565(T), 572(T)
Aus 678	525, 571(T)
Aus 724	538
Aus 755	575(T)
Aus 801	547
Aus 805	578(T)
Aus 808	528
Aus 810	529
Aus 811	529
Aus 812	529
Aus 813	529
Aus 814	529, 552(T), 555(T), 561(T)
Aus 823	558(T)
Aus 4604	563(T), 573(T)
Aus 4620	573(T)
Aus 4621	567(T), 569(T), 573(T)
Aus 4622	563(T)
Aus 4723	542, 576(T)
Aus 4725	576(T)
PNG 508	569(T)
PNG 512	569(T)
PNG 515	567(T)
PNG 518	573(T)
PNG 519	573(T)
PNG 545	563(T)
PNG 554	563(T)
PNG 628	569(T)
PNG 637	567(T)
PNG 646	568(T)
PNG 653	566(T)
PNG 673	525, 564(T)
PNG 678	525
PNG 680	563(T)
SLB 202	548

INT Chart	Notices
INT 604	563(T), 573(T)
INT 620	573(T)
INT 621	567(T), 569(T), 573(T)
INT 622	563(T)
INT 723	542, 576(T)
INT 725	576(T)

525 AUSTRALIA - Products - New Charts, New Editions, Withdrawn Charts

Australian Hydrographic Office

New Charts

<i>Chart</i>	<i>Title and Geographical limits</i>	<i>Scale</i>	<i>Publication Date</i>	<i>Remarks</i>
PNG 673	South Pacific Ocean - Papua New Guinea - New Britain - Dampier Strait 5° 18'·95 S – 6° 04'·40 S 148° 00'·00 E – 148° 26'·54 E	1:75 000	24 July 2020	Adoption of Papua New Guinea chart numbering. Replaces Aus 673. General updating throughout; including latest bathymetric data.
PNG 678	Papua New Guinea - New Britain - North Coast - Garove Island 4° 36'·14 S – 4° 45'·00 S 149° 21'·04 E – 149° 35'·00 E	1:25 000	24 July 2020	Adoption of Papua New Guinea chart numbering. Replaces Aus 678. General updating throughout; including latest bathymetric data.

New Electronic Navigation Chart (Aus ENC)

<i>Cell Name</i>	<i>Title</i>	<i>Publication Date</i>	<i>Remarks</i>
AU5BAB01	Australia - New South Wales - Batemans Bay (Clyde River Entrance and Marina)	16 July 2020	AU5191P6 has been withdrawn.

New Editions and Withdrawn Charts

<i>Chart</i>	<i>Title</i>	<i>Scale</i>	<i>Publication Date</i>	<i>Remarks</i>
Aus 195 (Edition 4)	Australia - East Coast - New South Wales - Approaches to Port Kembla	1:25 000	24 July 2020	New edition with general updating throughout; including infrastructure and latest bathymetric data. Chart Aus 195 Edition 3 dated 21 November 2008 is now superseded and must be withdrawn from use.

Charts withdrawn

<i>Chart</i>	<i>Remarks</i>
Aus 194	On publication of new edition Aus 195
Aus 673	On publication of new chart PNG 673
Aus 678	On publication of new chart PNG 678

Charts withdrawn without replacement

<i>Chart</i>	<i>Title</i>	<i>Scale</i>	<i>Publication Date</i>
Aus 219 Edition 1	Australia - East Coast - New South Wales - Plans in New South Wales (Sheet 2) Plans: Port Macquarie Cape Hawke Harbour Camden Haven Hastings River Broughton Island Sugarloaf Anchorage	 1:10 000 1:12 500 1:20 000 1:20 000 1:37 500 1:37 500	17 August 2001
Aus 220 Edition 1	Australia - East Coast - New South Wales - Plans in New South Wales (Sheet 1) Plans: Evans Head Tweed River Entrance Coffs Harbour Brunswick River Entrance Richmond River Entrance Wooli Wooli River Entrance Trial Bay	 1:5 000 1:7 500 1:10 000 1:12 500 1:12 500 1:12 500 1:15 000	10 April 2009

Charts withdrawn without replacement (*continued*)

Aus 221	Australia - East Coast - New South Wales - Solitary Islands	1:50 000	10 August 2018
Edition 2			

Aus 230	Australia - East Coast - Queensland - Approaches to Gold Coast Seaway	1:15 000	22 May 2009
Edition 1			

Chart permanently withdrawn

Charts listed above as withdrawn no longer meet chart carriage requirements and should be marked as "superseded" and replaced with the new chart/ new edition listed prior to passage through the area covered by the new chart.

When placing orders with a chart agent between notice of forthcoming edition and its publication, mariners should advise whether their order pertains to the current edition or the new edition.

For further details refer to the AHO website at www.hydro.gov.au for new edition and new chart stock arrival information.

526 AUSTRALIA - Products - New Charts and New Editions to be published shortly

Australian Hydrographic Office

New Charts to be published shortly

<i>Chart</i>	<i>Title</i>	<i>Scale</i>	<i>Remarks</i>
PNG 379	Papua New Guinea - South Coast - Kerema Bay to Port Moresby	1:300 000	Adoption of Papua New Guinea chart numbering. Replaces Aus 379. General updating throughout; including new submarine cable.

New Editions to be published shortly

<i>Chart</i>	<i>Title</i>	<i>Scale</i>	<i>Remarks</i>
NIL			

Charts to be withdrawn

<i>Chart</i>	<i>Remarks</i>
Aus 379	On publication of new chart PNG 379

Charts to be withdrawn without replacement 7 August 2020

<i>Chart</i>	<i>Title</i>	<i>Scale</i>	<i>Publication Date</i>
Aus 191 Edition 1	Australia - East Coast - New South Wales - Plans in New South Wales (Sheet 3) Plans: Bermagui Kiama Batemans Bay Marina Narooma Crookhaven River Entrance Moruya River Entrance Ulladulla Batemans Bay	 1:7 500 1:7 500 1:10 000 1:10 000 1:12 500 1:15 000 1:15 000 1:25 000	20 August 2004
Aus 193 Edition 2	Australia - East Coast - New South Wales - Approaches to Jervis Bay Plans: HMAS Creswell Huskisson	 1:37 500 1:5 000 1:15 000	13 July 2018
Aus 196 Edition 1	Australia - East Coast - New South Wales - Port Botany	1:7 500	7 September 2012
Aus 197 Edition 2	Australia - East Coast - New South Wales - Approaches to Port Jackson - Port Hacking to The Skillion	1:75 000	17 August 2001
Aus 208 Edition 7	Australia - East Coast - New South Wales - Newcastle Inset: Hunter River (South Arm)	 1:7 500 1:10 000	18 May 2012
Aus 215 Edition 1	Australia - East Coast - New South Wales - Pittwater	1:12 500	15 November 2002
Aus 216 Edition 1	Australia - East Coast - New South Wales - Lion Island to Brisbane Water	1:15 000	9 November 2001
Aus 217 Edition 1	Australia - East Coast - New South Wales - Hawkesbury River including Cowan Creek Plan: Cowan Creek	 1:12 500 1:20 000	6 February 2004
Aus 257 Edition 5	Australia - East Coast - Queensland - Townsville Harbour and River Entrance	1:7 500	22 September 2017

526 AUSTRALIA - Products - New Charts and New Editions to be published shortly
Charts to be withdrawn without replacement 21 August 2020

<i>Chart</i>	<i>Title</i>	<i>Scale</i>	<i>Publication Date</i>
Aus 222 Edition 4	Australia - East Coast - New South Wales - Clarence River Plan: Goodwood Island Wharf	1:15 000 1:6 000	23 August 2019
Aus 280 Edition 5	Australia - East Coast - Queensland - Plans in Queensland (Sheet 3) Plans: Magpie Reef to Eden Reef Flinders Group	 1:75 000 1:50 000	22 February 2019
Aus 281 Edition 3	Australia - East Coast - Queensland - First Three Mile Opening to Cape Direction	1:75 000	22 February 2019

527 AUSTRALIA - Product - AusTides 2020

Australian Hydrographic Service

Follow the link below to update Electronic Tides Tables (AusTides 2020) for Australia, Antarctica, Papua New Guinea, Solomon Islands and Timor-Leste

<http://www.hydro.gov.au/prodserv/publications/ausTides/tides-patches.htm>

528 AUSTRALIA - NEW SOUTH WALES - Port Kembla - Chart limits

Australian Hydrographic Office

Aus 808 [225/2020]

Delete	magenta limit with legend, Aus 194, centred on	34° 27'.7 S	150° 55'.2 E
--------	--	-------------	--------------

529 AUSTRALIA - NEW SOUTH WALES - QUEENSLAND - Broughton Island to Gold Coast Seaway - Charts withdrawn; ZOC diagrams; chart limits; chart notes; chart legends; light
 Australian Hydrographic Office

Note: position of existing chart notes may vary on certain charts.

Aus 810 [853/2018]

Insert	accompanying note	32° 02'.7 S	152° 14'.7 E
	magenta legend, <i>ENC (see Note)</i>	32° 09'.6 S	152° 31'.5 E
	accompanying ZOC diagram	32° 12'.0 S	152° 12'.0 E
	magenta legend, <i>ENC (see Note)</i>	32° 27'.3 S	152° 34'.8 E
	magenta legend, <i>ENC (see Note)</i>	32° 36'.5 S	152° 20'.5 E
Delete	magenta limits with legend Aus 219, centred on	32° 11'.0 S	152° 30'.5 E
	magenta limits with legend Aus 219, centred on	32° 26'.5 S	152° 32'.5 E
	magenta limits with legend Aus 219, centred on	32° 37'.0 S	152° 19'.0 E

Aus 811 [807/2018]

Insert	accompanying block	30° 50'.0 S	153° 02'.0 E
	accompanying note	30° 54'.3 S	152° 51'.5 E
	accompanying ZOC diagram	31° 00'.0 S	152° 43'.0 E
	magenta legend, <i>ENC (see Note)</i>	31° 24'.0 S	152° 56'.5 E
	magenta legend, <i>ENC (see Note)</i>	31° 39'.1 S	152° 52'.3 E
Delete	magenta limits with legend Aus 219, centred on	31° 26'.5 S	152° 53'.5 E
	magenta limits with legend Aus 219, centred on	31° 38'.7 S	152° 50'.0 E

Aus 812 [410/2020]

Insert	accompanying note	29° 33'.3 S	152° 57'.5 E
	accompanying ZOC diagram	29° 47'.0 S	153° 01'.5 E
	magenta legend, <i>ENC (see Note)</i>	29° 58'.0 S	153° 20'.0 E
	magenta legend, <i>ENC (see Note)</i>	30° 14'.6 S	153° 17'.0 E
Delete	magenta limits with legend Aus 221, centred on	30° 06'.0 S	153° 19'.0 E

Aus 813 [410/2020]

Insert	magenta legend, <i>ENC (see Note)</i>	28° 09'.8 S	153° 35'.5 E
	accompanying note	28° 23'.5 S	153° 16'.0 E
	accompanying note	28° 23'.5 S	153° 21'.5 E
	magenta legend, <i>ENC (see Note)</i>	28° 31'.9 S	153° 34'.5 E
	accompanying ZOC diagram	28° 47'.0 S	153° 21'.0 E
	light, <i>F.Bu.5M</i>	28° 52'.02 S	153° 34'.72 E
	a dashed line in a direction 130° for a distance of 0.61M, thence a continuous line for 4.39M, with legend 310°, emanating from light	28° 52'.02 S	153° 34'.72 E
	magenta legend, <i>ENC (see Note)</i>	28° 52'.1 S	153° 38'.0 E
	magenta legend, <i>ENC (see Note)</i>	29° 05'.3 S	153° 27'.4 E
Delete	magenta limits with legend Aus 220, centred on	28° 10'.5 S	153° 33'.0 E
	magenta limits with legend Aus 220, centred on	28° 32'.3 S	153° 33'.2 E
	magenta limits with legend Aus 220, centred on	28° 52'.5 S	153° 34'.3 E
	magenta limits with legend Aus 220, centred on	29° 07'.0 S	153° 26'.3 E

Aus 814 [230/2020]

Insert	magenta legend, <i>ENC (see Note)</i>	27° 54'.4 S	153° 26'.6 E
	accompanying note	28° 02'.0 S	153° 11'.6 E
	magenta legend, <i>ENC (see Note)</i>	28° 09'.8 S	153° 35'.5 E
	accompanying ZOC diagram	28° 11'.0 S	153° 14'.5 E
Delete	magenta limits with legend Aus 230, centred on	27° 56'.5 S	153° 26'.5 E
	magenta limits with legend Aus 220, centred on	28° 10'.5 S	153° 33'.0 E

530 AUSTRALIA - QUEENSLAND - Cairns - Trinity Inlet - Light buoys

Maritime Safety Queensland Notice 215/2020

Aus 263 [1189/2019]

Insert	port lateral cylindrical light buoy, <i>Fl.R.2·5s</i> , without topmark	16° 56'.660 S	145° 47'.102 E
	starboard lateral cylindrical light buoy, <i>Fl.G.2·5s</i> , without topmark	16° 56'.673 S	145° 47'.039 E
	port lateral cylindrical light buoy, <i>Fl.R.2·5s</i> , without topmark	16° 56'.960 S	145° 47'.538 E
	starboard lateral cylindrical light buoy, <i>Fl.G.2·5s</i> , without topmark	16° 57'.006 S	145° 47'.520 E
	port lateral cylindrical light buoy, <i>Fl.R.2·5s</i> , without topmark	16° 57'.169 S	145° 47'.719 E
	starboard lateral cylindrical light buoy, <i>Fl.G.2·5s</i> , without topmark	16° 57'.196 S	145° 47'.681 E

Aus 264 [1136/2019]

Insert	port lateral cylindrical light buoy, <i>Fl.R.2·5s</i> , without topmark	16° 56'.660 S	145° 47'.102 E
	starboard lateral cylindrical light buoy, <i>Fl.G.2·5s</i> , without topmark	16° 56'.673 S	145° 47'.039 E
	port lateral cylindrical light buoy, <i>Fl.R.2·5s</i> , without topmark	16° 56'.960 S	145° 47'.538 E
	starboard lateral cylindrical light buoy, <i>Fl.G.2·5s</i> , without topmark	16° 57'.006 S	145° 47'.520 E
	port lateral cylindrical light buoy, <i>Fl.R.2·5s</i> , without topmark	16° 57'.169 S	145° 47'.719 E
	starboard lateral cylindrical light buoy, <i>Fl.G.2·5s</i> , without topmark	16° 57'.196 S	145° 47'.681 E
	port lateral cylindrical light buoy, <i>Fl.R.2·5s</i> , without topmark	16° 57'.473 S	145° 47'.773 E
	starboard lateral cylindrical light buoy, <i>Fl.G.2·5s</i> , without topmark	16° 57'.500 S	145° 47'.723 E

531 AUSTRALIA - QUEENSLAND - Gladstone - Pelican Banks - North Channel - Light buoy

Maritime Safety Queensland Notice 216/2020

Aus 245 [342/2020]

Insert	special conical light buoy, <i>Fl.Y.5s</i> , with topmark	23° 46'.904 S	151° 18'.407 E
--------	---	---------------	----------------

532 AUSTRALIA - QUEENSLAND - Great Sandy Strait - Mary River - Leslie Reach - Navajds*Former Notice - 428(T)/2020 is cancelled*

Maritime Safety Queensland Notice 233/2020

Aus 241 [450/2020]

Insert	port lateral cylindrical light buoy, <i>Fl.R.3s</i> , without topmark	25° 30'.49 S	152° 46'.88 E
Delete	light beacon	25° 30'.5 S	152° 46'.9 E

533 AUSTRALIA - QUEENSLAND - Moreton Bay - Wellington Point - Light beacon

Maritime Safety Queensland Notice 234/2020

Aus 236 [452/2020]

Amend	light beacon to <i>Fl.R.3s</i>	27° 27'.8 S	153° 15'.0 E
-------	--------------------------------	-------------	--------------

534 AUSTRALIA - QUEENSLAND - Moreton Bay - Brisbane Road - Restricted area

Maritime Safety Queensland Notice 236/2020

Aus 236 [533/2020]

Insert	restricted area limit, with legend <i>Restricted Area (see Note)</i> , between	27° 21'.16 S	153° 07'.22 E
		27° 20'.65 S	153° 07'.51 E
		27° 20'.20 S	153° 07'.68 E
		27° 20'.22 S	153° 07'.74 E
		27° 19'.94 S	153° 07'.85 E
		27° 20'.16 S	153° 08'.32 E
		27° 20'.40 S	153° 08'.13 E
		27° 20'.43 S	153° 08'.19 E
		27° 20'.82 S	153° 07'.88 E
		27° 21'.32 S	153° 07'.60 E
	accompanying note	27° 03'.0 S	153° 04'.5 E

535 PAPUA NEW GUINEA - Cape Cretin to Vitu Islands - Chart name

Australian Hydrographic Office

Aus 386 [370/2020]

Amend	legend to <i>PNG 678</i>	04° 44'.7 S	149° 22'.3 E
-------	--------------------------	-------------	--------------

536 PAPUA NEW GUINEA - Dampier Strait - Chart name

Australian Hydrographic Office

Aus 386 [535/2020]

Amend	legend to PNG 673	5° 19'.3 S	148° 01'.1 E
	legend to PNG 673	6° 49'.2 S	149° 22'.2 E

Aus 548 [232/2020]

Amend	legend to PNG 673	5° 19'.1 S	148° 20'.1 E
	legend to PNG 673	5° 35'.9 S	148° 36'.7 E

537 AUSTRALIA - TORRES STRAIT - Ellis Channel - Hovell Bar - Depths

Maritime Safety Queensland

Aus 293 [872/2019]

Insert	contour, between	10° 34'.182 S	142° 15'.494 E
		10° 34'.177 S	142° 15'.566 E
	contour, between	10° 34'.253 S	142° 15'.533 E
		10° 34'.239 S	142° 15'.643 E
	depth, 1 ₂ m, and extend contour SW to enclose	10° 34'.181 S	142° 15'.725 E
	depth, 3 ₈ m, and extend contour S to enclose	10° 34'.209 S	142° 15'.185 E
	depth, 1 ₃ m	10° 34'.234 S	142° 15'.577 E
	depth, 4 ₆ m, and extend contour S to enclose	10° 34'.335 S	142° 15'.030 E
Delete	contour, between	10° 34'.18 S	142° 15'.49 E
		10° 34'.25 S	142° 15'.53 E
	contour, between	10° 34'.18 S	142° 15'.57 E
		10° 34'.24 S	142° 15'.64 E
	depth, 4 ₄ m	10° 34'.17 S	142° 15'.22 E
	depth, 1 ₈ m	10° 34'.20 S	142° 15'.59 E
	depth, 1 ₇ m	10° 34'.23 S	142° 15'.50 E
	depth, 4 ₉ m	10° 34'.28 S	142° 15'.04 E
	depth, 5m, and enclosing contour	10° 34'.38 S	142° 15'.00 E

Aus 299 [235/2020]

Insert	depth, 3 ₁ m, and extend contour W to enclose	10° 34'.181 S	142° 15'.318 E
	depth, 1 ₂ m, and extend contour SW to enclose	10° 34'.181 S	142° 15'.725 E
	depth, 1 ₃ m, and extend contour SW to enclose	10° 34'.234 S	142° 15'.577 E
	depth, 4 ₆ m, enclosed by contour	10° 34'.335 S	142° 15'.030 E
	depth, 1 ₆ m, enclosed by contour	10° 34'.346 S	142° 14'.895 E
Replace	depth, 4 ₈ m, with depth, 3 ₈ m	10° 34'.21 S	142° 15'.19 E
Delete	depth, 1 ₅ m	10° 34'.17 S	142° 15'.74 E
	depth, 4 ₃ m	10° 34'.19 S	142° 15'.33 E
	depth, 5m, and enclosing contour	10° 34'.38 S	142° 15'.00 E

538 AUSTRALIA - NORTHERN TERRITORY - Fog Bay - Fish aggregating device

Former Notice - 837(T)/2018 is cancelled

Department of Infrastructure, Planning and Logistics NT

Aus 316 [1310/2019]

Insert	special cylindrical light buoy, Fl.Y.3s FAD, with topmark	12° 40'.0 S	130° 10'.0 E
--------	---	-------------	--------------

Aus 724 [344/2016]

Insert	out of position special cylindrical light buoy, Fl.Y.3s FAD, with topmark	12° 40'.0 S	130° 10'.0 E
--------	---	-------------	--------------

539 AUSTRALIA - NORTHERN TERRITORY - Gove Harbour - Light buoy

Former Notice - 728(T)/2019 is cancelled
Rio Tinto

Aus 15 (Gove Inner Harbour) [NE 10/8/2018]

Insert	out of position isolated danger spar light buoy, <i>Fl(2)5s Patch</i> , with topmark	12° 12'.550 S	136° 40'.682 E
Delete	light buoy	12° 12'.55 S	136° 40'.63 E

540 AUSTRALIA - WESTERN AUSTRALIA - Broome - Entrance Point - Nav aids

Department of Transport WA Notice 62/2020

Aus 51 [17/2020]

Delete	light	18° 00'.41 S	122° 12'.57 E
	dashed and continuous line with legend 303·5°, emanating from light	18° 00'.41 S	122° 12'.57 E
	light	18° 00'.42 S	122° 12'.58 E

541 AUSTRALIA - WESTERN AUSTRALIA - Geraldton - Light

Mid West Ports

Aus 81 [1090/2019]

Move	light	28° 46'.65 S	114° 36'.04 E
	to	28° 46'.637 S	114° 36'.040 E

Aus 81 (Geraldton) [1090/2019]

Move	light	28° 46'.65 S	114° 36'.04 E
	to	28° 46'.637 S	114° 36'.040 E

542 AUSTRALIA - WESTERN AUSTRALIA - Montebello Islands - Well northwestwards

Woodside Energy Ltd

Aus 328 [481/2020]

Insert	depth, 980m, enclosed by danger circle with legend <i>Well</i> , centred on	19° 49'.67 S	115° 10'.58 E
--------	---	--------------	---------------

Aus 4723 (INT 723) [481/2020]

Insert	danger circle with legend <i>Well</i> , centred on	19° 49'.7 S	115° 10'.6 E
--------	--	-------------	--------------

543 AUSTRALIA - SOUTH AUSTRALIA - Port Adelaide - Light buoys

J Bird

Aus 137 [482/2020]

Insert	special spar light buoy, <i>Fl.Y.2s</i> , without topmark	34° 46'.888 S	138° 30'.867 E
	special spar light buoy, <i>Fl.Y.2s</i> , without topmark	34° 47'.103 S	138° 30'.813 E
	special spar light buoy, <i>Fl.Y.2s</i> , without topmark	34° 47'.253 S	138° 30'.775 E
	special spar light buoy, <i>Fl.Y.2s</i> , without topmark	34° 47'.480 S	138° 30'.729 E

544 AUSTRALIA - VICTORIA - Lakes Entrance - The Narrows - Nav aids
Gippsland Ports Notice 193/2020

Aus 182 (Lakes Entrance) [243/2020]

Insert	starboard lateral conical light buoy, <i>Fl.G.3s No1B</i> , without topmark	37° 52'.838 S	147° 57'.402 E
Replace	light buoy with port lateral cylindrical light buoy, <i>Fl.R.3s No2</i> , with topmark	37° 53'.06 S	147° 57'.95 E
Move	light buoy	37° 52'.81 S	147° 57'.41 E
	to	37° 52'.806 S	147° 57'.563 E
	light buoy	37° 52'.80 S	147° 57'.57 E
	to	37° 52'.826 S	147° 57'.604 E
	light buoy	37° 52'.94 S	147° 57'.79 E
	to	37° 52'.922 S	147° 57'.756 E
Delete	depth, 4 ₁ m	37° 52'.83 S	147° 57'.61 E

545 AUSTRALIA - VICTORIA - Port Phillip - Rye - Nav aids
Parks Victoria Notice 198/2020

Aus 158 [198/2020]

Replace	buoy with port lateral beacon with topmark	38° 22'.10 S	144° 49'.31 E
---------	--	--------------	---------------

546 AUSTRALIA - VICTORIA - Shoal Inlet Entrance - Light
Former Notice - 45(T)/2018 is cancelled
Maritime Safety Victoria Notice 203/2020

Aus 181 (Shoal Inlet Entrance) [782/2019]

Insert	light, <i>Fl.2s 6M</i>	38° 40'.56 S	146° 50'.15 E
Delete	light	38° 40'.5 S	146° 50'.1 E

547 AUSTRALIA - VICTORIA - Western Port - AIS; racon discontinued
Former Notice - 501(T)/2020 is cancelled
Victorian Regional Channels Authority Notices 157/2020, 205/2020

Aus 150 [100/2020]

Amend	legend to <i>A/S</i>	38° 30'.3 S	145° 05'.8 E
-------	----------------------	-------------	--------------

Aus 151 [26/2020]

Amend	legend to <i>A/S</i>	38° 30'.28 S	145° 05'.56 E
-------	----------------------	--------------	---------------

Aus 801 [21/2020]

Amend	legend to <i>A/S</i>	38° 30'.1 S	145° 06'.1 E
-------	----------------------	-------------	--------------

548 SOLOMON ISLANDS - Manning Strait - Northern Passage - Depths
HMAS *Leeuwin*

SLB 202 [NC 11/8/2017]

Insert	depth, 33m, and extend contour W to enclose	7° 14'.15 S	157° 50'.61 E
Delete	depth, 62m	7° 14'.2 S	157° 50'.5 E

549(T)/2020 AUSTRALIA - NEW SOUTH WALES - Port Kembla - Exclusion zone

Port Authority of New South Wales

A 50m exclusion zone exists around the northern end of berth 206 (34° 28'.26 S 150° 54'.67 E).

Mariners are not to enter the area without obtaining permission from the Harbour Master or VTIC.

Chart temporarily affected - Aus 195

550(T)/2020 AUSTRALIA - NEW SOUTH WALES - Port Kembla - Exclusion zone

Former Notice - 400(T)/2016 is cancelled

Port Authority of New South Wales

Cancel this notice on receipt.

Chart formerly affected - Aus 194

551(T)/2020 AUSTRALIA - QUEENSLAND - Gladstone - Drilling operations

Maritime Safety Queensland Notice 249(T)/2020

The barge *Auckland One* and support vessels *Tuff Punt*, *Avicennia* and *Oxley* are conducting drilling operations in the Port of Gladstone between Kangaroo Island (23° 43'.11 S 151° 08'.39 E) and Auckland Point (23° 49'.91 S 151° 15'.27 E).

Vessels will monitor VHF Ch 13, Ch 15 and Ch 16.

Mariners are advised to navigate with caution in the area and create no wash.

Chart temporarily affected - Aus 244 - Aus 245 - Aus 247 - Aus 271 - Aus 272

552(T)/2020 AUSTRALIA - QUEENSLAND - Gold Coast - Crab Island - Dredging operations; scientific instruments

Maritime Safety Queensland Notice 159(T)/2020

The dredge *Smithbridge Discovery* is conducting dredging operations in the channel west of Crab Island (27° 54'.2 S 153° 24'.5 E).

Spoil will be deposited offshore from South Stradbroke Island.

The dredge will monitor VHF Ch 16.

Special light buoys, *Fl. Y. 2.5s*, exist in positions 27° 54'.09 S 153° 24'.34 E and 27° 54'.52 S 153° 24'.54 E.

Mariners are advised to keep clear of the dredge and to navigate with caution in the area.

Chart temporarily affected - Aus 814

553(T)/2020 AUSTRALIA - QUEENSLAND - Gold Coast - Crab Island - Dredging operations; scientific instruments

Former Notice - 385(T)/2020 is cancelled

Maritime Safety Queensland Notice 159(T)/2020

Cancel this notice on receipt.

Chart formerly affected - Aus 230

554(T)/2020 AUSTRALIA - QUEENSLAND - Gold Coast - Scientific instruments recovered

Former Notice - 361(T)/2018 is cancelled

Maritime Safety Queensland

Cancel this notice on receipt.

Chart formerly affected - Aus 230

555(T)/2020 AUSTRALIA - QUEENSLAND - Gold Coast - Scientific instrument
 Maritime Safety Queensland Notice 84(T)/2020

A special light buoy, *Fl(5)Y.20s*, exists in position 27° 58'.18 S 153° 26'.50 E.

Chart temporarily affected - Aus 814

556(T)/2020 AUSTRALIA - QUEENSLAND - Gold Coast - Scientific instrument
Former Notice - 283(T)/2020 is cancelled
 Maritime Safety Queensland Notice 84(T)/2020

Cancel this notice on receipt.

Chart formerly affected - Aus 230

557(T)/2020 AUSTRALIA - QUEENSLAND - Gold Coast Seaway - Shoaling
Former Notice - 351(P)/2020 is cancelled
 Australian Hydrographic Office

Cancel this notice on receipt.

Chart formerly affected - Aus 230

558(T)/2020 AUSTRALIA - QUEENSLAND - Hay Point - Light relit
Former Notice - 665(T)/2016 is cancelled
 Maritime Safety Queensland

Cancel this notice on receipt.

Chart formerly affected - Aus 249 - Aus 250 - Aus 823

559(T)/2020 AUSTRALIA - QUEENSLAND - Hinchinbrook Channel - Light buoy restored
Former Notice - 160(T)/2020 is cancelled
 Maritime Safety Queensland

Cancel this notice on receipt.

Chart formerly affected - Aus 259

560(T)/2020 AUSTRALIA - QUEENSLAND - Karumba - Bed levelling operations completed
Former Notice - 459(T)/2020 is cancelled
 Maritime Safety Queensland

Cancel this notice on receipt.

Chart formerly affected - Aus 6

561(T)/2020 AUSTRALIA - QUEENSLAND - The Broadwater - South Channel - Light buoys
 Maritime Safety Queensland Notice 35(T)/2019

Special light buoys, *Fl.Y.3s*, exist in the following positions:

27° 56'.56 S 153° 25'.23 E
 27° 56'.63 S 153° 25'.24 E
 27° 56'.71 S 153° 25'.24 E
 27° 56'.86 S 153° 25'.25 E
 27° 56'.92 S 153° 25'.25 E.

Chart temporarily affected - Aus 814

562(T)/2020 AUSTRALIA - QUEENSLAND - The Broadwater - South Channel - Light buoys*Former Notice* - 124(T)/2019 is cancelled

Maritime Safety Queensland Notice 35(T)/2019

Cancel this notice on receipt.

Chart formerly affected - Aus 230**563(T)/2020 PAPUA NEW GUINEA - Cape Gazelle to Tavui Point - Lights unlit**

National Maritime Safety Authority PNG Coastal Navigation Warning 26/2020, 27/2020

The following lights are unlit;

<i>Position</i>	<i>Remarks</i>
4° 19'.37 S 152° 23'.78 E	<i>Fl(2)6s 5m 10M</i>
4° 08'.16 S 152° 10'.20 E	<i>Fl.8s 47m 18M.</i>

Chart temporarily affected - Aus 4604 (INT 604) - Aus 4622 (INT 622) - PNG 545 - PNG 554 - PNG 680**564(T)/2020 PAPUA NEW GUINEA - Dampier Strait - Nesup Channel - Light buoys off station**

National Maritime Safety Authority PNG , B Cooper

The port lateral light buoy, *Fl.R.2s* (5° 53'.27 S 148° 08'.70 E), and the starboard lateral light buoy, *Fl.G.2s* (5° 53'.92 S 148° 09'.05 E), are off station.

Chart temporarily affected - PNG 673**565(T)/2020 PAPUA NEW GUINEA - Dampier Strait - Nesup Channel - Light buoys off station***Former Notice* - 1018(T)/2019 is cancelled

National Maritime Safety Authority PNG , B Cooper

Cancel this notice on receipt.

Chart formerly affected - Aus 673**566(T)/2020 PAPUA NEW GUINEA - Finschhafen - Light beacon unlit**

National Maritime Safety Authority PNG Coastal Navigation Warning 23/2020

The port lateral light beacon, *Fl.R.4s 7m 3M* (6° 33'.32 S 147° 50'.70 E), is unlit.

Chart temporarily affected - PNG 653**567(T)/2020 PAPUA NEW GUINEA - Kitava Island - Light relit***Former Notice* - 394(T)/2020 is cancelled

National Maritime Safety Authority PNG Coastal Navigation Warning 16/2020

Cancel this notice on receipt.

Chart formerly affected - Aus 516 - Aus 4621 (INT 621) - PNG 515 - PNG 637**568(T)/2020 PAPUA NEW GUINEA - Madang Harbour - Biliau Island - Light beacon unlit**

National Maritime Safety Authority PNG Coastal Navigation Warning 25/2020

The light beacon, *Fl.1.5s 7m 10M* (5° 12'.21 S 145° 48'.39 E), is unlit.

Chart temporarily affected - PNG 646

569(T)/2020 PAPUA NEW GUINEA - Misima Island to Tawali Namonamo (Bagshaw) Patch - Light beacons relit*Former Notice* - 461(T)/2020 is cancelled

National Maritime Safety Authority PNG Coastal Navigation Warning 17/2020, 18/2020

Cancel this notice on receipt.

Chart formerly affected - Aus 4621 (INT 621) - PNG 508 - PNG 512 - PNG 628**570(P)/2020 PAPUA NEW GUINEA - Ningau Island - Shoaling**

Fugro

Latest survey shows shoaler depths than those charted may exist in an area bounded by the following positions:

04° 39'.63 S 149° 14'.71 E

04° 35'.74 S 149° 16'.10 E

04° 35'.98 S 149° 24'.52 E

04° 37'.08 S 149° 24'.56 E

04° 39'.53 S 149° 19'.65 E.

Mariners are advised to navigate with caution in the area.

Charts will be updated in due course.

Chart which will be affected - Aus 386**571(T)/2020 PAPUA NEW GUINEA - Ningau Island - Shoaling***Former Notice* - 80(P)/2019 is cancelled

Fugro

Cancel this notice on receipt.

Chart formerly affected - Aus 386 - Aus 678**572(T)/2020 PAPUA NEW GUINEA - Siassi Islands - Shoaling charted***Former Notice* - 1269(P)/2019 is cancelled

Australian Hydrographic Office

Cancel this notice on receipt.

Chart formerly affected - Aus 673**573(T)/2020 PAPUA NEW GUINEA - Ward Hunt Strait - Ipoteto Island - Light relit***Former Notice* - 208(T)/2020 is cancelled

National Maritime Safety Authority PNG Coastal Navigation Warning 15/2020

Cancel this notice on receipt.

Chart formerly affected - Aus 4604 (INT 604) - Aus 4620 (INT 620) - Aus 4621 (INT 621) - PNG 518 - PNG 519**574(T)/2020 AUSTRALIA - WESTERN AUSTRALIA - Browse Island - Light buoy restored northwestwards***Former Notice* - 435(T)/2020 is cancelled

Shell Australia

Cancel this notice on receipt.

Chart formerly affected - Aus 319 - Aus 320

575(T)/2020 AUSTRALIA - WESTERN AUSTRALIA - Geographe Bay - Scientific instruments

Former Notice - 1070(T)/2019 is cancelled
Department of Transport WA Notice 69/2020

Scientific instruments marked by special spherical light buoys, *Fl.Y.1-5s*, exist in the following positions:

33° 37'.34 S 115° 23'.75 E
33° 37'.34 S 115° 23'.84 E
33° 37'.50 S 115° 22'.28 E
33° 37'.50 S 115° 22'.34 E
33° 38'.07 S 115° 22'.40 E
33° 38'.08 S 115° 22'.27 E.

Chart temporarily affected - Aus 116 - Aus 755

576(T)/2020 AUSTRALIA - WESTERN AUSTRALIA - North West Cape - Drill rig northwestwards

Former Notice - 400(T)/2020 is cancelled
Woodside Energy Ltd

Cancel this notice on receipt.

Chart formerly affected - Aus 328 - Aus 329 - Aus 4723 (INT 723) - Aus 4725 (INT 725)

577(T)/2020 AUSTRALIA - WESTERN AUSTRALIA - Rankin Bank - Subsea operations completed

Former Notice - 630(T)/2017 is cancelled
Woodside Energy Ltd

Cancel this notice on receipt.

Chart formerly affected - Aus 327

578(T)/2020 AUSTRALIA - VICTORIA - Gippsland Lakes - Seismic survey southeastwards completed

Former Notice - 325(T)/2020 is cancelled
Australian Maritime Safety Authority , CGG

Cancel this notice on receipt.

Chart formerly affected - Aus 357 - Aus 487 - Aus 805

579(P)/2020 AUSTRALIA - VICTORIA - Port Albert to McLoughlins Entrance - Shoaling

Gippsland Ports

Latest survey shows shoaling and channel realignment in the following channels:

Kate Kearney Channel (38° 41'.7 S 146° 43'.0 E)
Tara Channel (38° 40'.8 S 146° 45'.7 E)
Boat Harbour Channel (38° 40'.4 S 146° 48'.4 E)
Pelican Channel (38° 39'.3 S 146° 48'.7 E)
Manns Beach Channel (38° 38'.8 S 146° 47'.4 E)
Manns Channel (38° 40'.5 S 146° 49'.6 E)
Oyster Bed Channel (38° 38'.5 S 146° 51'.2 E).

Mariners are advised to navigate with caution in the area.

Charts will be updated in due course.

Chart which will be affected - Aus 181

580(T)/2020 AUSTRALIA - VICTORIA - Port Phillip - Mordialloc - Light relit

Former Notice - 78(T)/2020 is cancelled
Parks Victoria Notice 209/2020

Cancel this notice on receipt.

Chart formerly affected - Aus 143 - Aus 155

581(T)/2020 AUSTRALIA - VICTORIA - Port Phillip - Yarra River - South Wharf - Harbour works

Victorian Ports Corporation (Melbourne) Notice 201(T)/2020

Vessels *Punt 1*, *Malae* and support vessel *Saratoga 1* are conducting remediation works including diving operations from berths 30 (37° 49'.20 S 144° 55'.13 E) to 31 (37° 49'.22 S 144° 55'.01 E).

Vessels will display appropriate lights and shapes.

Mariners are advised to navigate with caution in the area.

Chart temporarily affected - Aus 154

582(T)/2020 AUSTRALIA - VICTORIA - Port Phillip - Sorrento Channel - Light beacon restored

Former Notice - 264(T)/2020 is cancelled

Parks Victoria Notice 198/2020

Cancel this notice on receipt.

Chart formerly affected - Aus 143 - Aus 158

583(T)/2020 AUSTRALIA - VICTORIA - Western Port - Western Channel - Light buoys

Victorian Regional Channels Authority Notice 206/2020

A starboard lateral pillar light buoy, *Fl.G.3s No3*, exists in position 38° 28'.9 S 145° 07'.6 E.

A port lateral pillar light buoy, *Fl.R.4s No4*, exists in position 38° 28'.8 S 145° 07'.3 E.

Chart temporarily affected - Aus 150 - Aus 151

584(T)/2020 AUSTRALIA - TASMANIA - Hobart - Lutana - Nyrstar Wharf - Pipeline completed

Former Notice - 441(T)/2020 is cancelled

Nyrstar

Cancel this notice on receipt.

Chart formerly affected - Aus 172

HYDROGRAPHIC REPORTS

<i>Locality</i>	<i>Report</i>	<i>Ship/Authority</i>	<i>Observer</i>
SA - Port Adelaide	Light buoys	<i>Frederick G</i>	J Bird

To accompany Australian Notice to Mariners 529/2020

ELECTRONIC NAVIGATIONAL CHART (ENC)

Larger scale ENC content exists in this area. When using electronic navigation systems, certain vessels (e.g. restricted by depth or size) may benefit from the additional level of detail shown in the largest scale ENC product available.

Note for chart Aus 810

To accompany Australian Notice to Mariners 529/2020

ELECTRONIC NAVIGATIONAL CHART (ENC)

Larger scale ENC content exists in this area. When using electronic navigation systems, certain vessels (e.g. restricted by depth or size) may benefit from the additional level of detail shown in the largest scale ENC product available.

Note for chart Aus 812

To accompany Australian Notice to Mariners 529/2020

ESTUARY AND RIVER ENTRANCES

The crossing of coastal bars and entry to rivers and estuaries is potentially dangerous. Bars and entrances are dynamic in nature, hence the depth and preferred approach may vary. Leading beacons and other navigational aids may not always indicate the best approach. If mariners are unsure of the condition at a particular bar or entrance, local information should be sought prior to crossing.

Note for chart Aus 813

To accompany Australian Notice to Mariners 534/2020

**RESTRICTED AREA - AIRCRAFT FLIGHT
ZONE**

Vessels with an overall height greater than 9 metres are prohibited from entering an area 0.55M from the shoreline. All vessels are requested to avoid the flight path zone and are advised not to stop if transiting. Contact Vessel Traffic Service Brisbane on VHF channel 12 for further information.

Note for chart Aus 236

To accompany Australian Notice to Mariners 529/2020

ELECTRONIC NAVIGATIONAL CHART (ENC)

Larger scale ENC content exists in this area. When using electronic navigation systems, certain vessels (e.g. restricted by depth or size) may benefit from the additional level of detail shown in the largest scale ENC product available.

Note for chart Aus 811

To accompany Australian Notice to Mariners 529/2020

ELECTRONIC NAVIGATIONAL CHART (ENC)

Larger scale ENC content exists in this area. When using electronic navigation systems, certain vessels (e.g. restricted by depth or size) may benefit from the additional level of detail shown in the largest scale ENC product available.

Note for chart Aus 813

To accompany Australian Notice to Mariners 529/2020

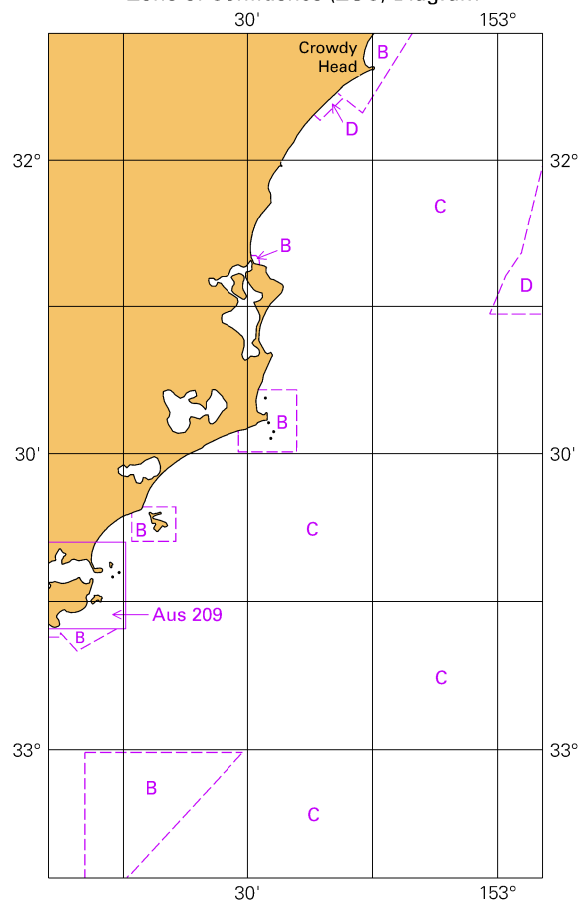
ELECTRONIC NAVIGATIONAL CHART (ENC)

Larger scale ENC content exists in this area. When using electronic navigation systems, certain vessels (e.g. restricted by depth or size) may benefit from the additional level of detail shown in the largest scale ENC product available.

Note for chart Aus 814

To accompany Australian Notice to Mariners 529/2020

Zone of Confidence (ZOC) Diagram

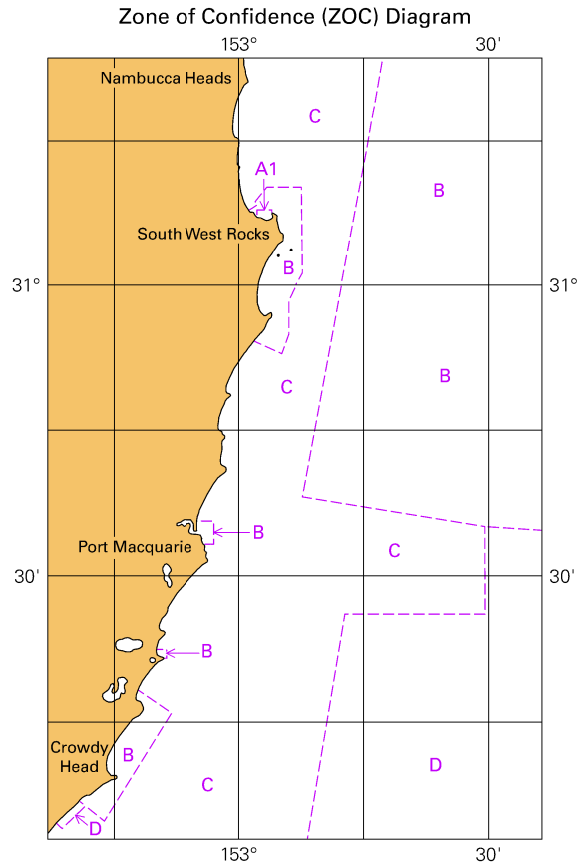


Block for chart Aus 810

(65.4 x 111.7 mm)

© Commonwealth of Australia 2020

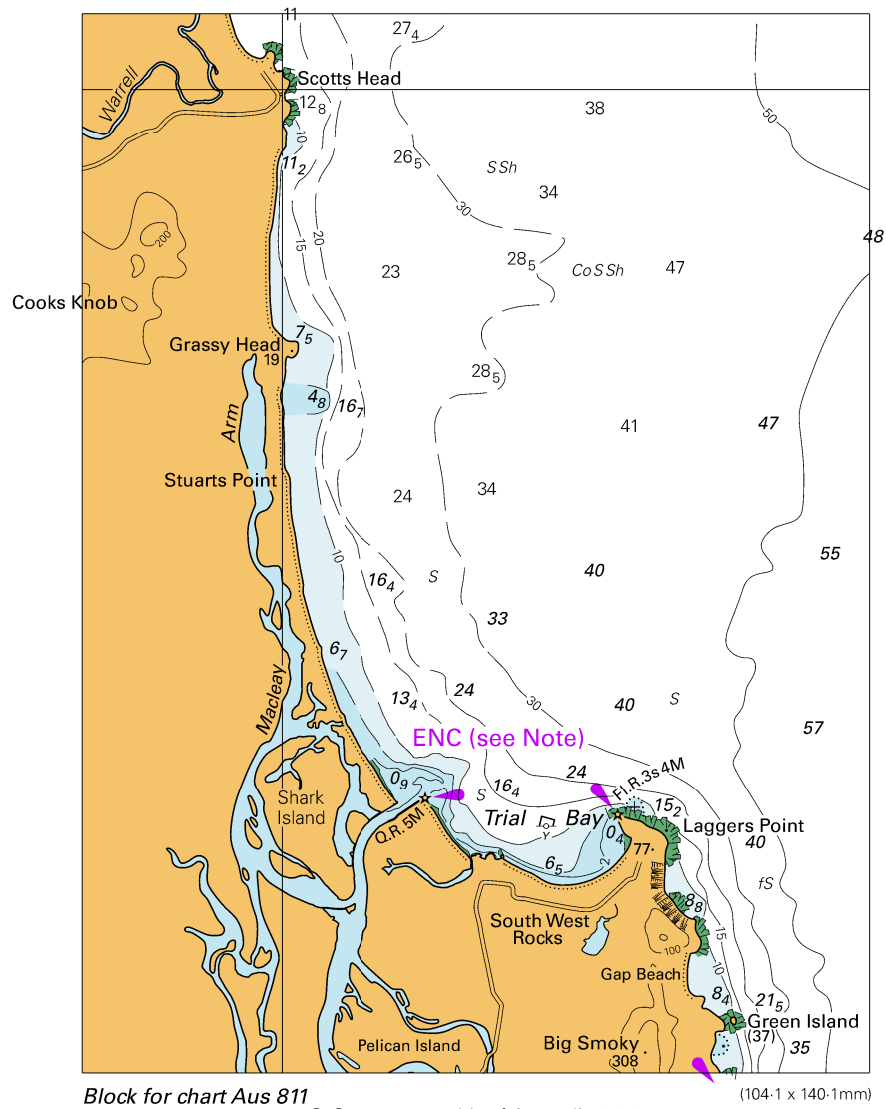
To accompany Australian Notice to Mariners 529/2020



Block for chart Aus 811

(65.4 x 103.3 mm)

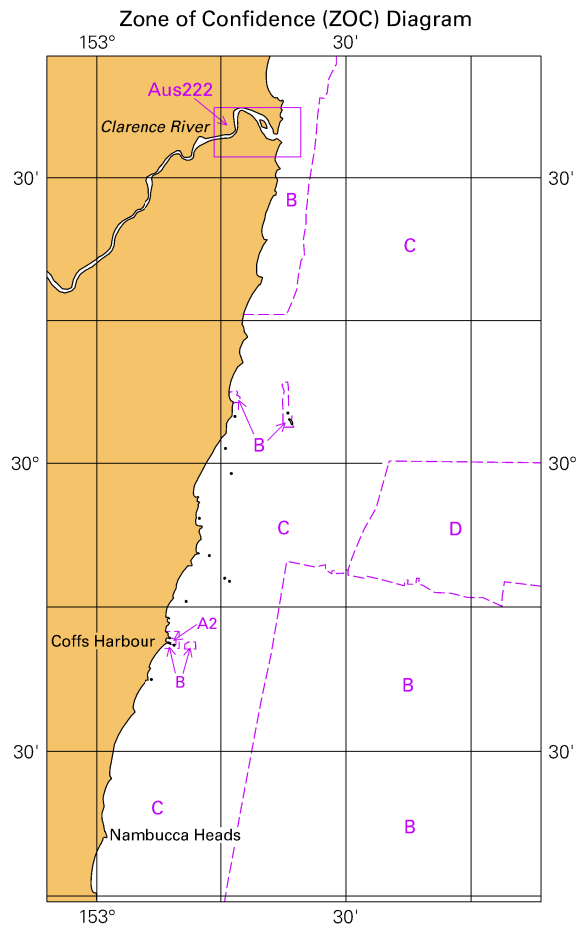
© Commonwealth of Australia 2020



Block for chart Aus 811

© Commonwealth of Australia 2019

(104.1 x 140.1mm)

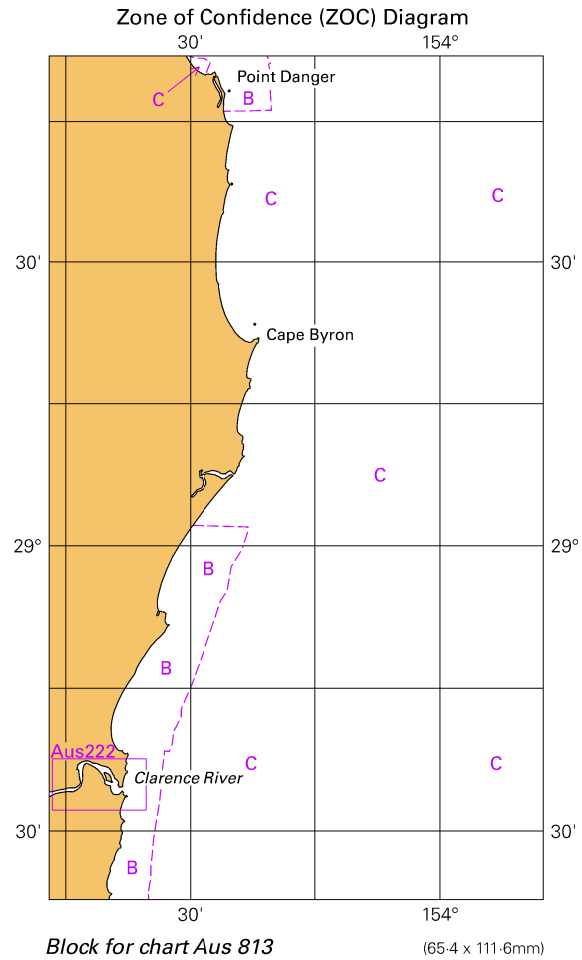


Block for chart Aus 812

(65.4 x 111.8mm)

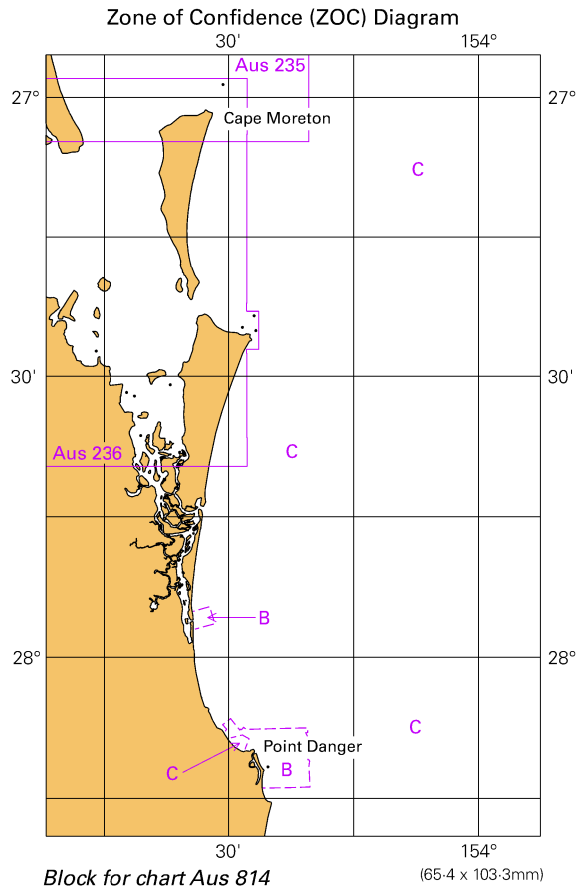
© Commonwealth of Australia 2020

To accompany Australian Notice to Mariners 529/2020



© Commonwealth of Australia 2020

To accompany Australian Notice to Mariners 529/2020



© Commonwealth of Australia 2020