



29 May 2020

Edition 11

# AUSTRALIAN NOTICES TO MARINERS

**Notices 407 - 444**

Published fortnightly by the Australian Hydrographic Office



Australian Notices to Mariners are the authority for correcting charts and publications published by the Australian Hydrographic Office covering Australia, Papua New Guinea, Solomon Islands, Australian Antarctic Territory and Timor-Leste.

Commodore F.T. FREEMAN RAN  
*Hydrographer of Australia*

---

## SECTIONS.

- I. **Australian Notices to Mariners, including blocks and notes.**
- II. **Hydrographic Reports.**

## SUPPLEMENTS.

- I. **Tracings**
- II. **Cumulative List of Australian Notices to Mariners.**
- III. **Cumulative List of Temporary and Preliminary Australian Notices to Mariners.**
- IV. **Temporary and Preliminary Notices in force.**

---

© Commonwealth of Australia 2020

This work is copyright. Apart from any use permitted under the Copyright Act 1968, no part may be reproduced by any process, adapted, communicated or commercially exploited without prior written permission from The Commonwealth represented by the Australian Hydrographic Office.

## IMPORTANT NOTICE

This edition of Notices to Mariners includes all significant information affecting AHO products which the AHO has become aware of since the last edition. All reasonable efforts have been made to ensure the accuracy and completeness of the information, including third party information, on which these updates are based. The AHO regards third parties from which it receives information as reliable, however the AHO cannot verify all such information and errors may therefore exist. The AHO does not accept liability for errors in third party information.

---

## GENERAL INSTRUCTIONS

The substance of these notices should be inserted on the charts affected.

Bearings are referred to the true compass and are reckoned clockwise from North; those relating to lights are given as seen by an observer from seaward.

Positions quoted in notices relate to WGS84 which is the horizontal datum for all charts produced by the Australian Hydrographic Office.

The range quoted for a light is its nominal range.

Depths are with reference to the chart datum of each chart. Heights are above mean high water springs or mean higher high water, as appropriate.

The capital letter (P) or (T) after the number of any notice denotes a preliminary or temporary notice respectively, which are contained separately at the end of the permanent notices.

---

## REPORTING OF DANGERS

Mariners are particularly requested to notify the AUSTRALIAN HYDROGRAPHIC OFFICE, Locked Bag 8801 Wollongong, NSW 2500 (Fax 02-4223 6599, e-mail [datacentre@hydro.gov.au](mailto:datacentre@hydro.gov.au) or, alternatively by filling in and submitting the [Hydrographic Notes](#) forms located on the web site – [www.hydro.gov.au](http://www.hydro.gov.au)), immediately on the discovery of new dangers or suspected dangers to navigation. For changes or defects in aids to navigation notify AusSAR (Fax 02-6230 6868 or email [rccaus@amsa.gov.au](mailto:rccaus@amsa.gov.au)).

---

## AUTHORISED USE

Copies of Australian notices are available free of charge from the Australian Hydrographic Office (AHO) website ([www.hydro.gov.au](http://www.hydro.gov.au)) and through the eNotices (email) service ([www.hydro.gov.au/enotices/enotices.htm](http://www.hydro.gov.au/enotices/enotices.htm)).

Individual Notices may be copied for the purpose of inserting Notice substance on official charts and publications. Paper copies may be printed by chart agents and distributed to customers on a cost recovery basis. Participating chart agents are listed on the AHO website as providing a 'Paper Notices to Mariners' service ([www.hydro.gov.au/webapps/jsp/agents/agents-list.jsp](http://www.hydro.gov.au/webapps/jsp/agents/agents-list.jsp)). Copies of the notices may not be sold for profit without prior written agreement.

## NUMERICAL INDEX OF NOTICES TO MARINERS

### Edition No 11

| Notices | Aus Chart, INT Chart, ENC Cell, AHP, BA Pubs         |
|---------|--|
| 407     | Aus 614, 652, PNG 652                                |
| 408     | Aus 280, 281, 621, 627                               |
| 409     | Amendment to Australian National Tide Tables 2020    |
| 410     | Aus 812, 813   |
| 411     | Aus 200  |
| 412     | Aus 235, 815   |
| 413     | Aus 389  |
| 414     | Aus 24, 28   |
| 415     | Aus 311, 312, 313                                    |
| 416     | Aus 357, 487   |
| 417     | Aus 143, 155   |
| 418     | Aus 171, 173   |
| 419(T)  | Aus 813, 4602, 4635, 4643, INT 602, 635, 643         |
| 420(T)  | Aus 489, 809   |
| 421(T)  | Aus 827  |
| 422(T)  | Aus 235, 814, 815                                    |
| 423(T)  | Aus 237  |
| 424(T)  | Aus 238  |
| 425(T)  | Aus 264  |
| 426(T)  | Aus 244, 245, 246                                    |
| 427(T)  | Aus 244, 245, 271                                    |
| 428(T)  | Aus 241  |
| 429(T)  | Aus 250  |
| 430(T)  | Aus 236  |
| 431(T)  | Aus 256, 257   |
| 432(T)  | Aus 4604, 4622, INT 604, 622, PNG 545, 554, 679, 680 |
| 433(T)  | Aus 4604, 4622, INT 604, 622, PNG 545, 554, 680      |
| 434(T)  | Aus 391, 662   |
| 435(T)  | Aus 319, 320   |
| 436(T)  | Aus 328, 4723, INT 723                               |
| 437(T)  | Aus 144, 158   |
| 438(T)  | Aus 143, 155   |
| 439(T)  | Aus 143  |
| 440(T)  | Aus 154  |
| 441(T)  | Aus 172  |
| 442(T)  | Aus 172  |
| 443(T)  | Aus 172  |
| 444(T)  | Aus 173  |

## NUMERICAL INDEX OF CHARTS AFFECTED

### Edition No 11

| Aus Chart | Notices                |
|-----------|------------------------|
| Aus 24    | 414                    |
| Aus 28    | 414                    |
| Aus 143   | 417, 438(T), 439(T)    |
| Aus 144   | 437(T)                 |
| Aus 154   | 440(T)                 |
| Aus 155   | 417, 438(T)            |
| Aus 158   | 437(T)                 |
| Aus 171   | 418                    |
| Aus 172   | 441(T), 442(T), 443(T) |
| Aus 173   | 418, 444(T)            |
| Aus 200   | 411                    |
| Aus 235   | 412, 422(T)            |
| Aus 236   | 430(T)                 |
| Aus 237   | 423(T)                 |
| Aus 238   | 424(T)                 |
| Aus 241   | 428(T)                 |
| Aus 244   | 426(T), 427(T)         |
| Aus 245   | 426(T), 427(T)         |
| Aus 246   | 426(T)                 |
| Aus 250   | 429(T)                 |
| Aus 256   | 431(T)                 |
| Aus 257   | 431(T)                 |
| Aus 264   | 425(T)                 |
| Aus 271   | 427(T)                 |
| Aus 280   | 408                    |
| Aus 281   | 408                    |
| Aus 311   | 415                    |
| Aus 312   | 415                    |
| Aus 313   | 415                    |
| Aus 319   | 435(T)                 |
| Aus 320   | 435(T)                 |
| Aus 328   | 436(T)                 |
| Aus 357   | 416                    |
| Aus 389   | 413                    |
| Aus 391   | 434(T)                 |
| Aus 487   | 416                    |
| Aus 489   | 420(T)                 |
| Aus 614   | 407                    |
| Aus 621   | 408                    |
| Aus 627   | 408                    |
| Aus 652   | 407                    |
| Aus 662   | 434(T)                 |
| Aus 809   | 420(T)                 |
| Aus 812   | 410                    |
| Aus 813   | 410, 419(T)            |
| Aus 814   | 422(T)                 |
| Aus 815   | 412, 422(T)            |
| Aus 827   | 421(T)                 |
| Aus 4602  | 419(T)                 |
| Aus 4604  | 432(T), 433(T)         |
| Aus 4622  | 432(T), 433(T)         |
| Aus 4635  | 419(T)                 |
| Aus 4643  | 419(T)                 |
| Aus 4723  | 436(T)                 |

| Aus Chart | Notices        |
|-----------|----------------|
| PNG 545   | 432(T), 433(T) |
| PNG 554   | 432(T), 433(T) |
| PNG 652   | 407            |
| PNG 679   | 432(T)         |
| PNG 680   | 432(T), 433(T) |

| INT Chart | Notices        |
|-----------|----------------|
| INT 602   | 419(T)         |
| INT 604   | 432(T), 433(T) |
| INT 622   | 432(T), 433(T) |
| INT 635   | 419(T)         |
| INT 643   | 419(T)         |
| INT 723   | 436(T)         |

**407 AUSTRALIA - Products - New Charts, New Editions, Withdrawn Charts**

Australian Hydrographic Office

**New Charts**

| <i>Chart</i> | <i>Title and Geographical limits</i>   | <i>Scale</i>   | <i>Publication Date</i> | <i>Remarks</i>  |
|--------------|--|--|-------------------------|---|
| PNG 652      | Papua New Guinea - North Coast - Plans in Papua New Guinea (Sheet 4)<br>Plans:<br>Aitape Roads<br>2° 38'·88 S – 3° 04'·20 S<br>142° 20'·50 E – 142° 33'·70 E<br>Aitape<br>3° 07'·67 S – 3° 08'·80 S<br>142° 21'·00 E – 142° 22'·03 E<br>Vanimo Harbour<br>2° 38'·88 S – 2° 42'·30 S<br>141° 15'·60 E – 141° 20'·00 E | 1:37 500<br><br><br><br><br>1:12 500<br><br><br>1:12 500 | 29 May 2020             | Adoption of Papua New Guinea chart numbering. Replaces Aus 652. General updating throughout; including latest bathymetric data. |

**New Electronic Navigation Chart (Aus ENC)**

| <i>Cell Name</i> | <i>Title</i>  | <i>Publication Date</i> | <i>Remarks</i> |
|------------------|---------------|-------------------------|----------------|
| AU6KUR01         | Kurnell Basin | 28 May 2020             |                |

**New Editions and Withdrawn Charts**

| <i>Chart</i>                  | <i>Title</i>  | <i>Scale</i>                          | <i>Publication Date</i> | <i>Remarks</i>   |
|-------------------------------|---|---------------------------------------|-------------------------|--|
| Aus 614<br><b>(Edition 3)</b> | Australia - East Coast - Coral Sea -<br>Diamond Passage<br>Plans:<br>East Diamond Islet<br>Turtle Islet | 1:150 000<br><br>1:25 000<br>1:25 000 | 29 May 2020             | New edition with general updating throughout; including latest bathymetric data.<br><b>Chart Aus 614 Edition 2 dated 2 July 2010 is now superseded and must be withdrawn from use.</b> |

**Charts withdrawn**

| <i>Chart</i> | <i>Remarks</i>                      |
|--------------|-------------------------------------|
| Aus 652      | On publication of new chart PNG 652 |

**Chart permanently withdrawn**

Charts listed above as withdrawn no longer meet chart carriage requirements and should be marked as "superseded" and replaced with the new chart/ new edition listed prior to passage through the area covered by the new chart.

When placing orders with a chart agent between notice of forthcoming edition and its publication, mariners should advise whether their order pertains to the current edition or the new edition.

For further details refer to the AHO website at [www.hydro.gov.au](http://www.hydro.gov.au) for new edition and new chart stock arrival information.

**408 AUSTRALIA - Products - New Charts and New Editions to be published shortly**

Australian Hydrographic Office

**New Charts to be published shortly**

| <i>Chart</i> | <i>Title</i>  | <i>Scale</i> | <i>Remarks</i>  |
|--------------|---|--------------|---|
| PNG 621      | Papua New Guinea - South Coast - Approaches to Port Moresby | 1:37 500     | Adoption of Papua New Guinea chart numbering. Replaces Aus 621. General updating throughout; including latest bathymetric data. |
| PNG 627      | Papua New Guinea - North East Coast - Jomard Entrance       |              | Adoption of Papua New Guinea chart numbering. Replaces Aus 627. General updating throughout; including latest bathymetric data. |

**New Editions to be published shortly**

| <i>Chart</i> | <i>Title</i> | <i>Scale</i> | <i>Remarks</i> |
|--------------|--------------|--------------|----------------|
| NIL          |              |              |                |

**Charts to be withdrawn**

| <i>Chart</i> | <i>Remarks</i>                      |
|--------------|-------------------------------------|
| Aus 621      | On publication of new chart PNG 621 |
| Aus 627      | On publication of new chart PNG 627 |

**Charts to be withdrawn without replacement 27 June 2020**

| <i>Chart</i>     | <i>Title</i>   | <i>Scale</i>         | <i>Publication Date</i> |
|------------------|--|----------------------|-------------------------|
| Aus 280          | Australia - East Coast - Queensland - Plans in Queensland                        |                      | 22 February 2019        |
| <b>Edition 5</b> | (Sheet 3)<br>Plans:<br>Magpie Reef to Eden Reef<br>Flinders Group                | 1:75 000<br>1:50 000 |                         |
| Aus 281          | Australia - East Coast - Queensland - First Three Mile Opening to Cape Direction | 1:75 000             | 22 February 2019        |
| <b>Edition 3</b> |  |                      |                         |

**409 AUSTRALIA - Product - Amendment to Australian National Tide Tables 2020**

Australian Hydrographic Office

**ANTT 2020**

Page 367

|               |  |
|---------------|--|
| <i>Delete</i> | MADANG To Chart Datum AUS 387 NC 12 OCT 2007 0.0 |
| <i>Insert</i> | MADANG To Chart Datum PNG 387 NC 15 MAY 2020 0.0 |

**410 AUSTRALIA - NEW SOUTH WALES - Clarence Head - Light**

UKHO

**Aus 812 [303/2020]**

|       |                                     |             |              |
|-------|-------------------------------------|-------------|--------------|
| Amend | light to <i>Fl(3)14M &amp; F.Bu</i> | 29° 25'.9 S | 153° 21'.9 E |
|-------|-------------------------------------|-------------|--------------|

**Aus 813 [303/2020]**

|       |                                     |             |              |
|-------|-------------------------------------|-------------|--------------|
| Amend | light to <i>Fl(3)14M &amp; F.Bu</i> | 29° 25'.9 S | 153° 21'.9 E |
|-------|-------------------------------------|-------------|--------------|

**411 AUSTRALIA - NEW SOUTH WALES - Port Jackson - Middle Harbour - Sailors Bay - Wreck**

Port Authority of New South Wales , Hydrographic and Cadastral Survey Pty Ltd

**Aus 200 [334/2020]**

|        |  |               |                |
|--------|--|---------------|----------------|
| Insert | depth, 10m, enclosed by danger circle with legend, <i>Wk</i> | 33° 48'.276 S | 151° 13'.803 E |
|--------|--|---------------|----------------|

**412 AUSTRALIA - QUEENSLAND - Barwon Bank - Fish aggregating devices**

Maritime Safety Queensland Notice 172(T)/2020

**Aus 235 [230/2020]**

|      |            |              |               |
|------|------------|--------------|---------------|
| Move | light buoy | 26° 45'.0 S  | 153° 27'.7 E  |
|      | to         | 26° 44'.76 S | 153° 27'.19 E |

**Aus 815 [273/2020]**

|      |            |              |               |
|------|------------|--------------|---------------|
| Move | light buoy | 26° 19'.9 S  | 153° 19'.3 E  |
|      | to         | 26° 15'.56 S | 153° 19'.75 E |
|      | light buoy | 26° 34'.5 S  | 153° 33'.9 E  |
|      | to         | 26° 32'.15 S | 153° 34'.43 E |
|      | light buoy | 26° 45'.0 S  | 153° 27'.7 E  |
|      | to         | 26° 44'.76 S | 153° 27'.19 E |

**413 PAPUA NEW GUINEA - Aitape to Vanimo Harbour - Chart name**

Australian Hydrographic Office

**Aus 389 [1240/2019]**

|       |                   |            |              |
|-------|-------------------|------------|--------------|
| Amend | legend to PNG 652 | 2° 38'.6 S | 141° 19'.0 E |
|       | legend to PNG 652 | 3° 04'.5 S | 142° 32'.7 E |
|       | legend to PNG 652 | 3° 28'.9 S | 141° 37'.2 E |
|       | legend to PNG 652 | 3° 31'.6 S | 141° 43'.3 E |

**414 AUSTRALIA - NORTHERN TERRITORY - Darwin - Wrecks**

Surrich Hydrographics

**Aus 24 [98/2020]**

|         |   |              |               |
|---------|---|--------------|---------------|
| Replace | wreck depth, 12 <sub>1</sub> m, with wreck depth, 12 <sub>4</sub> m | 12° 29'.27 S | 130° 49'.11 E |
|---------|---|--------------|---------------|

|      |       |               |                |
|------|-------|---------------|----------------|
| Move | wreck | 12° 28'.36 S  | 130° 50'.62 E  |
|      | to    | 12° 28'.346 S | 130° 50'.603 E |

**Aus 28 [1195/2019]**

|         |   |              |               |
|---------|---|--------------|---------------|
| Replace | wreck depth, 16 <sub>6</sub> m, with wreck depth, 15 <sub>3</sub> m | 12° 29'.35 S | 130° 52'.37 E |
|         | wreck depth, 3 <sub>3</sub> m, with wreck depth, 4m                 | 12° 29'.74 S | 130° 53'.82 E |

|      |       |               |                |
|------|-------|---------------|----------------|
| Move | wreck | 12° 28'.36 S  | 130° 50'.62 E  |
|      | to    | 12° 28'.346 S | 130° 50'.603 E |

**415 TIMOR-LESTE - Pulau Jaco - Depths**

Geoscience Australia GA4396

**Aus 311 [145/2020]**

|        |                    |            |              |
|--------|--------------------|------------|--------------|
| Insert | accompanying block | 8° 35'.0 S | 127° 23'.0 E |
| Delete | contour, between   | 9° 13'.3 S | 127° 11'.0 E |
|        |                    | 9° 09'.5 S | 127° 13'.6 E |
|        |                    | 9° 06'.4 S | 127° 16'.7 E |
|        | depth, 1752m       | 9° 04'.7 S | 127° 15'.0 E |
|        | depth, 1918m       | 9° 06'.0 S | 127° 12'.3 E |
|        | depth, 2023m       | 9° 07'.9 S | 127° 15'.0 E |
|        | depth, 1900m       | 9° 08'.3 S | 127° 12'.6 E |
|        | depth, 1939m       | 9° 10'.9 S | 127° 12'.8 E |
|        | depth, 2955m       | 9° 15'.3 S | 127° 13'.9 E |

**Aus 312 [12/2019]**

|        |                      |            |              |
|--------|----------------------|------------|--------------|
| Insert | accompanying block A | 8° 45'.0 S | 127° 13'.0 E |
|        | accompanying block B | 9° 15'.0 S | 127° 13'.0 E |

**Aus 313 [874/2019]**

|        |                              |             |               |
|--------|------------------------------|-------------|---------------|
| Insert | accompanying block A         | 8° 43'.0 S  | 127° 18'.0 E  |
|        | out of position depth, 1038m | 8° 53'.16 S | 127° 09'.57 E |
|        | out of position depth, 1143m | 8° 55'.63 S | 127° 10'.53 E |
|        | depth, 1331m                 | 8° 56'.03 S | 127° 13'.14 E |
|        | out of position depth, 1504m | 8° 58'.13 S | 127° 11'.33 E |
|        | depth, 1635m                 | 8° 58'.52 S | 127° 14'.27 E |
|        | accompanying block B         | 9° 15'.0 S  | 127° 18'.0 E  |

**416 AUSTRALIA - VICTORIA - Golden Beach - Restricted areas southeastwards**

National Offshore Petroleum Safety and Environmental Management Authority

**Aus 357 [23/2020]**

|        |                             |             |              |
|--------|-----------------------------|-------------|--------------|
| Delete | restricted area, centred on | 38° 15'.0 S | 147° 29'.1 E |
|        | restricted area, centred on | 38° 41'.7 S | 148° 44'.8 E |

**Aus 487 [379/2020]**

|        |                             |             |              |
|--------|-----------------------------|-------------|--------------|
| Delete | restricted area, centred on | 38° 15'.0 S | 147° 29'.1 E |
|        | restricted area, centred on | 38° 41'.7 S | 148° 44'.8 E |

**417 AUSTRALIA - VICTORIA - Port Phillip - Mordialloc - Light buoy**

Parks Victoria Notice 154/2020

**Aus 143 [378/2020]**

|      |            |              |               |
|------|------------|--------------|---------------|
| Move | light buoy | 38° 01'.8 S  | 145° 02'.4 E  |
|      | to         | 38° 01'.60 S | 145° 03'.20 E |

**Aus 155 [1321/2019]**

|      |            |              |               |
|------|------------|--------------|---------------|
| Move | light buoy | 38° 01'.8 S  | 145° 02'.4 E  |
|      | to         | 38° 01'.60 S | 145° 03'.20 E |

**418 AUSTRALIA - TASMANIA - Quarantine Bay - Buoy; wreck**

Marine and Safety Tasmania Notice M064/2020, M073/2020

**Aus 171 [380/2020]**

|        |   |              |               |
|--------|---|--------------|---------------|
| Insert | out of position blue and yellow spar buoy without topmark               | 43° 07'.66 S | 147° 20'.01 E |
|        | safe clearance depth, 12m, enclosed by danger circle with legend, Wk PA | 43° 07'.66 S | 147° 20'.01 E |

**Aus 173 [1096/2019]**

|        |   |              |               |
|--------|---|--------------|---------------|
| Insert | blue and yellow spar buoy without topmark | 43° 07'.66 S | 147° 20'.01 E |
|--------|---|--------------|---------------|



**419(T)/2020 AUSTRALIA - NEW SOUTH WALES - Cape Byron - Light altered**

Australian Maritime Safety Authority Ausoast Warning 197/2020

The light, *Fl. 15s 118m 27M & F.R. 8M* (28° 38'.30 S 153° 38'.18 E), has been temporarily altered to *Fl. 15s 118m 15M & F.R. 8M* with sectors White 20° - 160° (140°), Red 148° - 189° (41°).

**Chart temporarily affected - Aus 813 - Aus 4602 (INT 602) - Aus 4635 (INT 635) - Aus 4643 (INT 643)**

**420(T)/2020 AUSTRALIA - NEW SOUTH WALES - Nobbys Head - Obstructions eastwards removed**

*Former Notice* - 682(T)/2018 is cancelled

Australian Maritime Safety Authority

Cancel this notice on receipt.

**Chart formerly affected - Aus 489 - Aus 809**

**421(T)/2020 AUSTRALIA - QUEENSLAND - Acheron Island - Live firing completed**

*Former Notice* - 382(T)/2020 is cancelled

Maritime Safety Queensland Notice 166(T)/2020

Cancel this notice on receipt.

**Chart formerly affected - Aus 827**

**422(T)/2020 AUSTRALIA - QUEENSLAND - Bribie Island - North West Channel - Wreck salvaged**

*Former Notice* - 1012(T)/2019 is cancelled

Maritime Safety Queensland

Cancel this notice on receipt.

**Chart formerly affected - Aus 235 - Aus 814 - Aus 815**

**423(T)/2020 AUSTRALIA - QUEENSLAND - Brisbane River - Boggy Creek - Harbour works completed**

*Former Notice* - 156(T)/2020 is cancelled

Maritime Safety Queensland

Cancel this notice on receipt.

**Chart formerly affected - Aus 237**

**424(T)/2020 AUSTRALIA - QUEENSLAND - Brisbane River - Hamilton Reach - Harbour works completed**

*Former Notice* - 103(T)/2020 is cancelled

Maritime Safety Queensland

Cancel this notice on receipt.

**Chart formerly affected - Aus 238**

**425(T)/2020 AUSTRALIA - QUEENSLAND - Cairns - Trinity Inlet - Subsea operations**

Maritime Safety Queensland

The barge *Carpentaria Constructor* is conducting salvage operations in the vicinity of position 16° 58'.14 S 145° 47'.44 E.

The area is marked by special light buoys with flashing white lights.

Mariners are advised to keep clear of the operations and to navigate with caution in the area. A 60m clearance is requested.

**Chart temporarily affected - Aus 264**

**426(T)/2020 AUSTRALIA - QUEENSLAND - Gladstone - South Trees Island - Scientific instrument**  
Maritime Safety Queensland Notice 171(T)/2020

A scientific instrument marked by a light buoy, *Fl.Y.6s*, exists in position 23° 51'.71 S 151° 19'.62 E.

**Chart temporarily affected - Aus 244 - Aus 245 - Aus 246**

**427(T)/2020 AUSTRALIA - QUEENSLAND - Gladstone Boat Harbour - Dredging operations**  
Maritime Safety Queensland Notice 174(T)/2020

The dredge *Saibai* and support vessel *Mudgee* are conducting dredging operations in an area bounded by the coast and the following positions:

23° 49'.97 S 151° 14'.49 E  
23° 49'.91 S 151° 14'.49 E  
23° 49'.85 S 151° 14'.58 E  
23° 49'.91 S 151° 14'.93 E  
23° 50'.03 S 151° 14'.93 E.

A semi submerged pipeline exists in the area. The pipeline is marked by special light buoys, *Fl.Y.1-5s*, in the following positions:

23° 49'.79 S 151° 14'.46 E  
23° 49'.81 S 151° 14'.53 E  
23° 49'.83 S 151° 14'.57 E  
23° 49'.84 S 151° 14'.61 E  
23° 49'.86 S 151° 14'.66 E  
23° 49'.88 S 151° 14'.71 E  
23° 49'.90 S 151° 14'.80 E  
23° 49'.93 S 151° 14'.85 E.

A designated safe crossing is marked by a starboard lateral light buoy, *Fl.G.1-5s* (23° 49'.84 S 151° 14'.58 E), and a port lateral light buoy, *Fl.R.1-5s* (23° 49'.84 S 151° 14'.60 E), for vessels requiring access.

Vessels should contact the dredge on VHF Ch 16 should the dredge or pipeline impede their safe passage and are advised to make contact prior to passing the dredge and support vessel.

The dredge will display appropriate lights and shapes.

Mariners are advised to navigate with caution in the area.

**Chart temporarily affected - Aus 244 - Aus 245 - Aus 271**

**428(T)/2020 AUSTRALIA - QUEENSLAND - Great Sandy Strait - Mary River - Leslie Reach - Light beacon destroyed**  
Maritime Safety Queensland Notice 141(T)/2020

The light beacon, *Fl.R.3s* (25° 30'.49 S 152° 46'.90 E), has been destroyed.

**Chart temporarily affected - Aus 241**

**429(T)/2020 AUSTRALIA - QUEENSLAND - Mackay - Obstruction; light buoy**  
Maritime Safety Queensland Notice 183/2020

An obstruction marked by a special light buoy exists in position 21° 06'.43 S 149° 13'.52 E.

**Chart temporarily affected - Aus 250**

**430(T)/2020 AUSTRALIA - QUEENSLAND - Moreton Bay - Waterloo Bay - Dredging operations completed**  
*Former Notice - 162(T)/2020 is cancelled*  
Maritime Safety Queensland

Cancel this notice on receipt.

**Chart formerly affected - Aus 236**

**431(T)/2020 AUSTRALIA - QUEENSLAND - Townsville - Dredging operations**

Maritime Safety Queensland Notice 187(T)/2020

The dredge *Brisbane* is conducting dredging operations in the Sea Channel, Platypus Channel and Inner and Outer Harbour.

The dredge will monitor VHF Ch 12 and Ch 16.

Mariners are advised to navigate with caution in the area.

**Chart temporarily affected - Aus 256 - Aus 257**

**432(T)/2020 PAPUA NEW GUINEA - Duke of York Island to Gazelle Peninsula - Nav aids relit**

Former Notice - 393(T)/2020 is cancelled

National Maritime Safety Authority PNG Coastal Navigation Warning 11/2020

Cancel this notice on receipt.

**Chart formerly affected - Aus 4604 (INT 604) - Aus 4622 (INT 622) - PNG 545 - PNG 554 - PNG 679 - PNG 680**

**433(T)/2020 PAPUA NEW GUINEA - Gazelle Peninsula - Lights unlit**

National Maritime Safety Authority PNG Coastal Navigation Warning 4/2020, 5/2020

The following nav aids are unlit;

| Position                  | Remarks              |
|---------------------------|----------------------|
| 4° 08'.16 S 152° 10'.20 E | light, Fl.8s 47m 18M |
| 4° 11'.71 S 152° 10'.08 E | light, Fl.5s 38m 8M  |

**Chart temporarily affected - Aus 4604 (INT 604) - Aus 4622 (INT 622) - PNG 545 - PNG 554 - PNG 680**

**434(T)/2020 PAPUA NEW GUINEA - Los Negros Island - Nahuchie Point - Light relit**

Former Notice - 395(T)/2020 is cancelled

National Maritime Safety Authority PNG Coastal Navigation Warning 12/2020

Cancel this notice on receipt.

**Chart formerly affected - Aus 391 - Aus 662**

**435(T)/2020 AUSTRALIA - WESTERN AUSTRALIA - Browse Island - Light buoy off station northwestwards**

Shell Australia

The orange light buoy, Q(5)Y.20s (13° 48'.75 S 123° 17'.18 E), is off station.

**Chart temporarily affected - Aus 319 - Aus 320**

**436(T)/2020 AUSTRALIA - WESTERN AUSTRALIA - Montebello Islands - Subsea operations northwestwards**

Woodside Energy Ltd

MV *Skandi Singapore* and support vessels will be conducting subsea operations in positions 20° 06'.88 S 115° 02'.44 E and 20° 08'.88 S 115° 02'.47 E.

Mariners are advised to navigate with caution in the area. 0.27M clearance requested.

**Chart temporarily affected - Aus 328 - Aus 4723 (INT 723)**

**437(T)/2020 AUSTRALIA - VICTORIA - Port Phillip - Point Nepean - Light buoy restored**

Former Notice - 217(T)/2020 is cancelled

Parks Victoria Notice 155/2020

Cancel this notice on receipt.

**Chart formerly affected - Aus 144 - Aus 158**

**438(T)/2020 AUSTRALIA - VICTORIA - Port Phillip - Drill rig**  
 MODU *Ocean Onyx* , Victorian Ports Corporation (Melbourne) Notice 158(T)/2020

Drill rig *Ocean Onyx* is moored in position 37° 58'.73 S 144° 46'.54 E.

A 500m exclusion zone exists around the drill rig.

**Chart temporarily affected - Aus 143 - Aus 155**

**439(T)/2020 AUSTRALIA - VICTORIA - Port Phillip - Exclusion zone**  
*Former Notice - 359(T)/2020 is cancelled*  
 Victorian Ports Corporation (Melbourne) Notice 158(T)/2020, MODU *Ocean Onyx*

Cancel this notice on receipt.

**Chart formerly affected - Aus 143**

**440(T)/2020 AUSTRALIA - VICTORIA - Port Phillip - Yarra River - Swanson Dock - Harbour works completed**  
*Former Notice - 77(T)/2020 is cancelled*  
 Victorian Ports Corporation (Melbourne) Notice 163(T)/2020

Cancel this notice on receipt.

**Chart formerly affected - Aus 154**

**441(T)/2020 AUSTRALIA - TASMANIA - Hobart - Lutana - Nyrstar Wharf - Pipeline**  
*Former Notice - 403(T)/2020 is cancelled*  
 Nyrstar , Marine and Safety Tasmania Notice M072/2020, M085/2020

A floating pipeline marked by red buoys exists in the vicinity of position 42° 49'.75 S 147° 19'.02 E. A special light buoy, *Fl.3s*, exists in position 42° 49'.74 S 147° 19'.03 E .

Mariners are advised to navigate with caution in the area.

**Chart temporarily affected - Aus 172**

**442(T)/2020 AUSTRALIA - TASMANIA - Hobart - Lutana - Nyrstar Wharf - Light unlit**  
 Nyrstar , Marine and Safety Tasmania Notice M083/2020

The light, *F.R* (42° 49'.74 S 147° 19'.01 E), is unlit.

**Chart temporarily affected - Aus 172**

**443(T)/2020 AUSTRALIA - TASMANIA - River Derwent - Bellerive - Harbour works**  
 Marine and Safety Tasmania Notice M081/2020

Works associated with the construction of a pier are in progress in the vicinity of position 42° 52'.43 S 147° 21'.88 E.

The area is marked by buoys with flashing yellow lights. The outermost buoy is positioned at 42° 52'.42 S 147° 21'.80 E.

The barge is lit with a white light and piles when driven will be marked by yellow lights.

Mariners are advised to navigate with caution in the area.

**Chart temporarily affected - Aus 172**

**444(T)/2020 AUSTRALIA - TASMANIA - Storm Bay - Buoy restored**

*Former Notice* - 598(T)/2018 is cancelled  
Marine and Safety Tasmania

Cancel this notice on receipt.

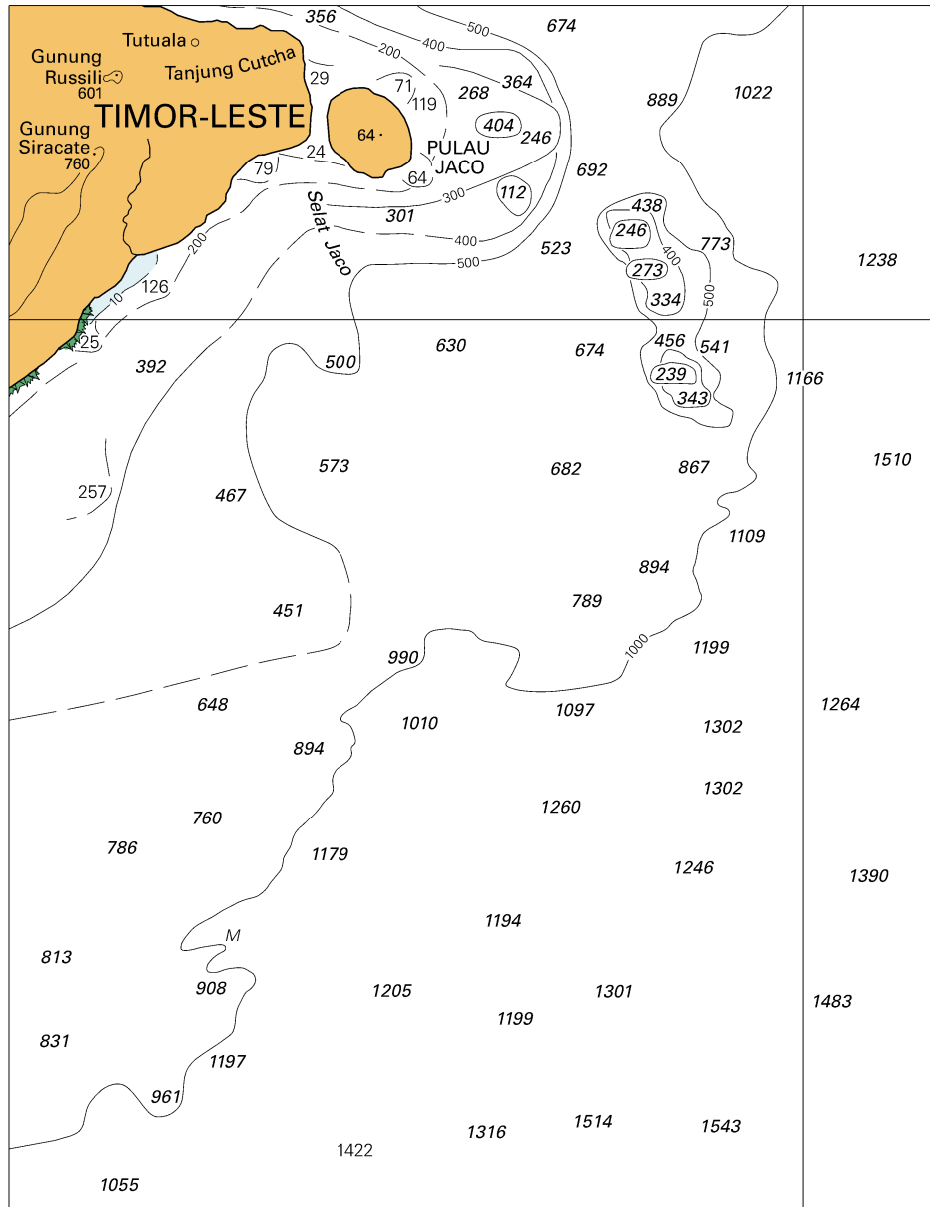
**Chart formerly affected - Aus 173**

II

**HYDROGRAPHIC REPORTS**

NIL

To accompany Australian Notice to Mariners 415/2020

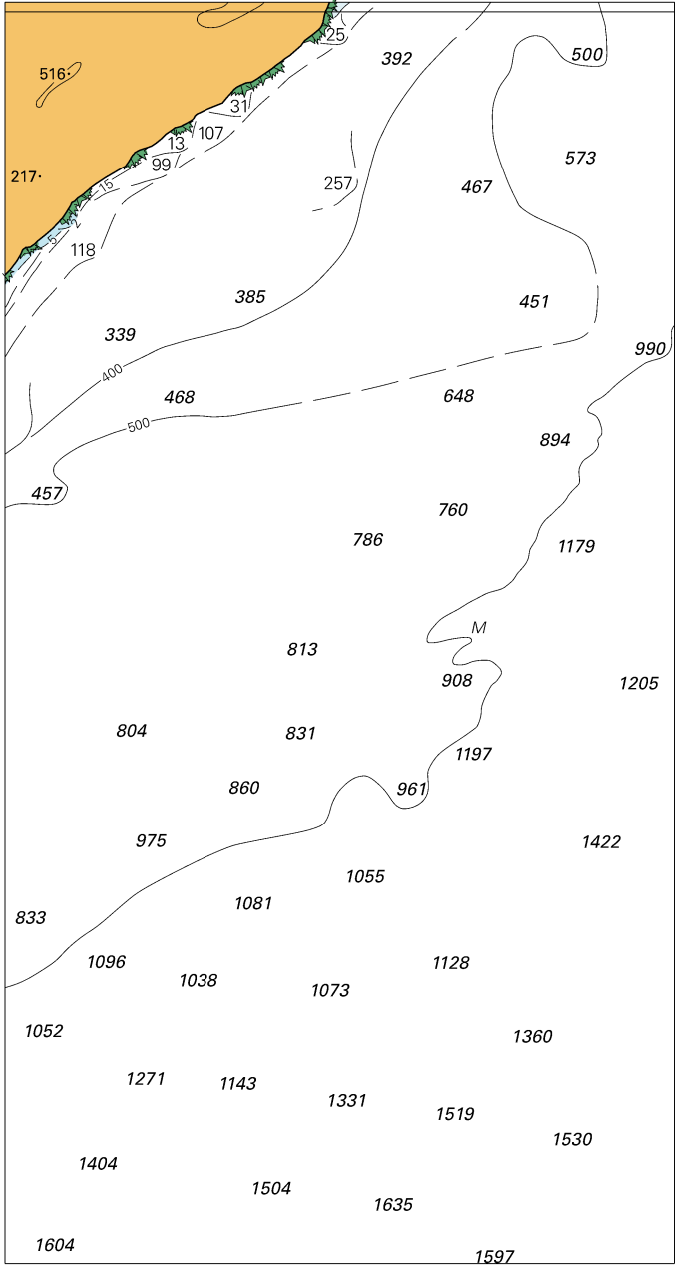


Block for chart Aus 311

© Commonwealth of Australia 2020

(123:1 x 159:5mm)

*To accompany Australian Notice to Mariners 415/2020*



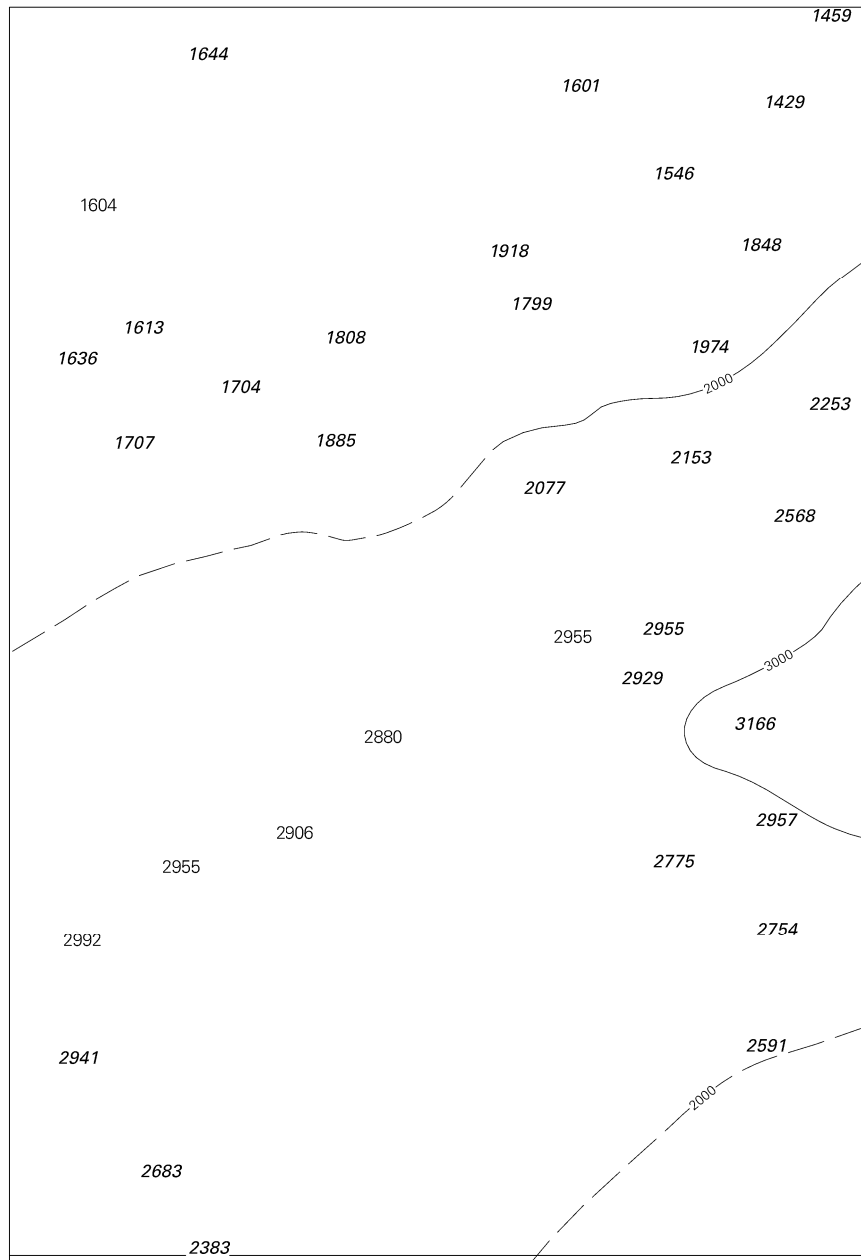
© Commonwealth of Australia 2020

Block A for chart Aus 312

(88.5 x 166.8mm)



To accompany Australian Notice to Mariners 415/2020

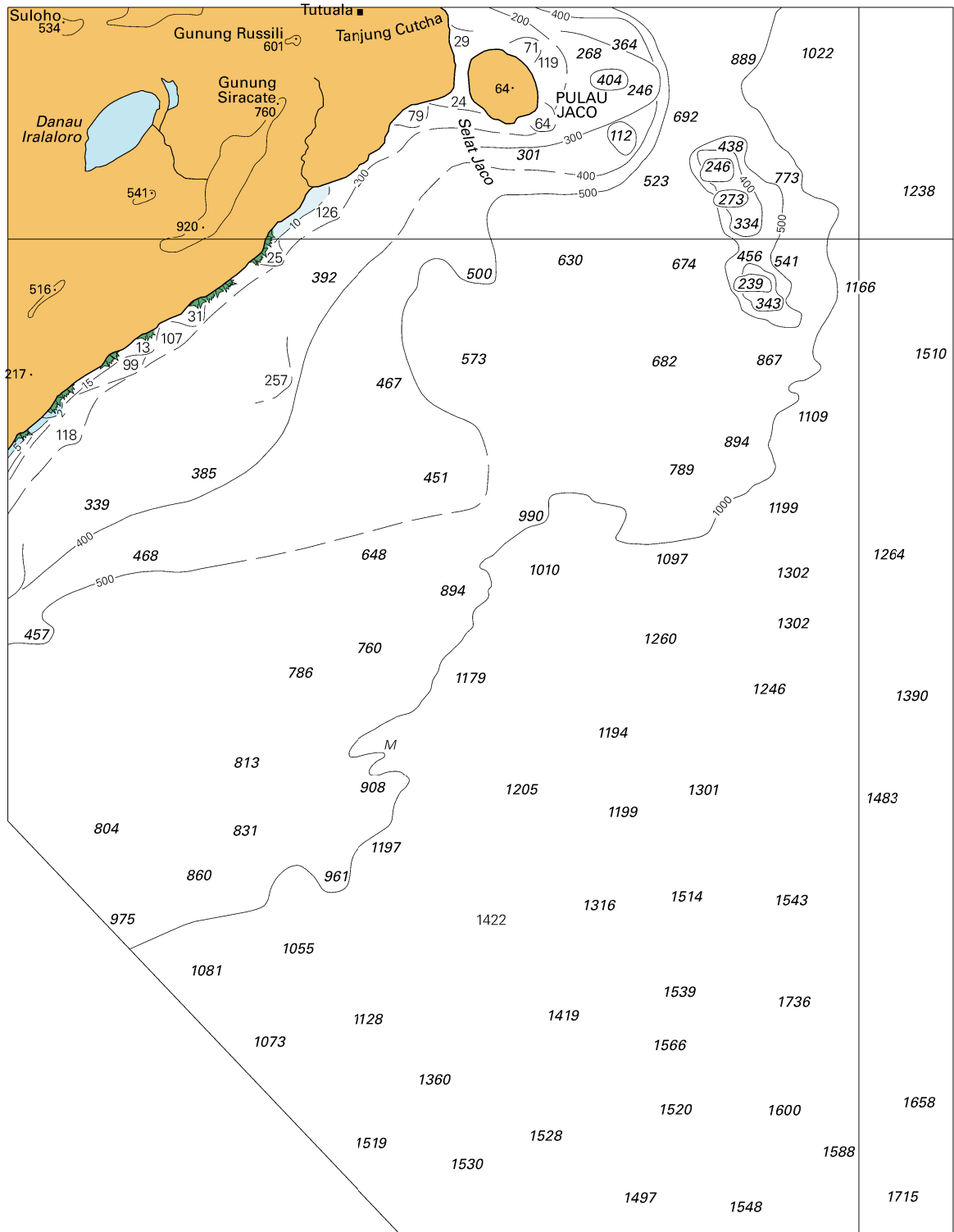


© Commonwealth of Australia 2020

Block B for chart Aus 312

(113.9 x 166.2mm)

To accompany Australian Notice to Mariners 415/2020

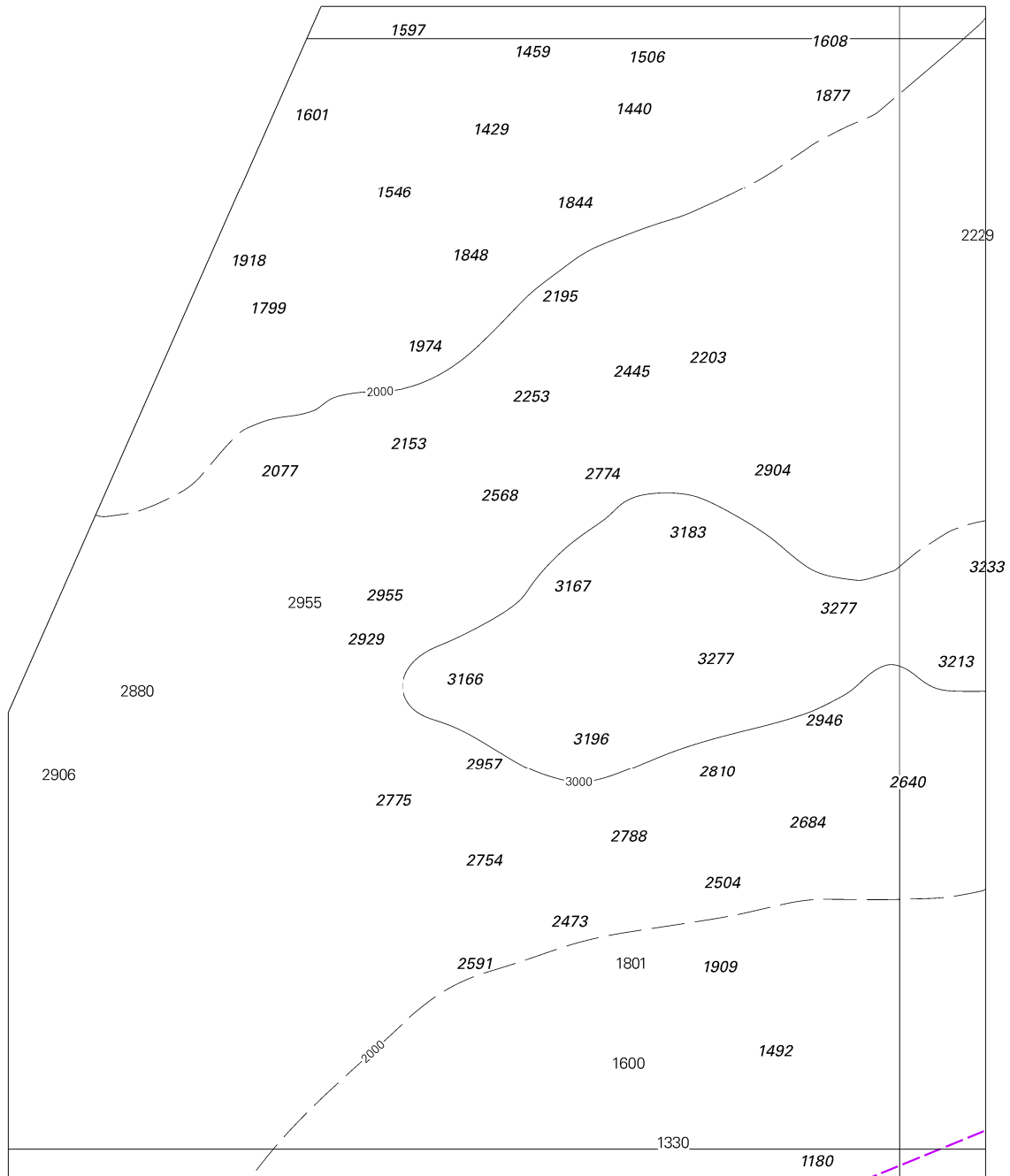


Block A for chart Aus 313

© Commonwealth of Australia 2020

(152.5 x 198.6mm)  
(88.7)

To accompany Australian Notice to Mariners 415/2020



Block B for chart Aus 313

© Commonwealth of Australia 2020

(99.4 x 175.2mm)  
(146-6)