



22 February 2019

Edition 4

AUSTRALIAN NOTICES TO MARINERS

Notices 143 - 201

Published fortnightly by the Australian Hydrographic Office



Australian Notices to Mariners are the authority for correcting charts and publications published by the Australian Hydrographic Office covering Australia, Papua New Guinea, Solomon Islands, Australian Antarctic Territory and Timor-Leste.

Commodore F.T. FREEMAN RAN
Hydrographer of Australia

SECTIONS.

- I. Australian Notices to Mariners, including blocks and notes.
- II. Hydrographic Reports.
- III. Navigational Warnings.

SUPPLEMENTS.

- I. Tracings
- II. Cumulative List of Australian Notices to Mariners.
- III. Cumulative List of Temporary and Preliminary Australian Notices to Mariners.
- IV. Temporary and Preliminary Notices in force.
- V. Amendments to Admiralty List of Lights and Fog Signals (Vol K), Radio Signals (NP 281(2), 282, 283(2), 285, 286(4)) and Sailing Directions (NP 9, 13, 14, 15, 33, 34, 35, 36, 39, 44, 51, 60, 61, 62, 100, 136).

© Commonwealth of Australia 2019

This work is copyright. Apart from any use permitted under the Copyright Act 1968, no part may be reproduced by any process, adapted, communicated or commercially exploited without prior written permission from The Commonwealth represented by the Australian Hydrographic Office.

IMPORTANT NOTICE

This edition of Notices to Mariners includes all significant information affecting AHO products which the AHO has become aware of since the last edition. All reasonable efforts have been made to ensure the accuracy and completeness of the information, including third party information, on which these updates are based. The AHO regards third parties from which it receives information as reliable, however the AHO cannot verify all such information and errors may therefore exist. The AHO does not accept liability for errors in third party information.

GENERAL INSTRUCTIONS

The substance of these notices should be inserted on the charts affected.

Bearings are referred to the true compass and are reckoned clockwise from North; those relating to lights are given as seen by an observer from seaward.

Positions quoted in notices relate to WGS84 which is the horizontal datum for all charts produced by the Australian Hydrographic Office.

The range quoted for a light is its nominal range.

Depths are with reference to the chart datum of each chart. Heights are above mean high water springs or mean higher high water, as appropriate.

The capital letter (P) or (T) after the number of any notice denotes a preliminary or temporary notice respectively, which are contained separately at the end of the permanent notices.

REPORTING OF DANGERS

Mariners are particularly requested to notify the AUSTRALIAN HYDROGRAPHIC OFFICE, Locked Bag 8801 Wollongong, NSW 2500 (Fax 02-4223 6599, e-mail datacentre@hydro.gov.au or, alternatively by filling in and submitting the [Hydrographic Notes](#) forms located on the web site – www.hydro.gov.au), immediately on the discovery of new dangers or suspected dangers to navigation. For changes or defects in aids to navigation notify AusSAR (Fax 02-6230 6868 or email rccaus@amsa.gov.au).

AUTHORISED USE

Copies of Australian notices are available free of charge from the Australian Hydrographic Office (AHO) website (www.hydro.gov.au) and through the eNotices (email) service (www.hydro.gov.au/enotices/enotices.htm).

Individual Notices may be copied for the purpose of inserting Notice substance on official charts and publications. Paper copies may be printed by chart agents and distributed to customers on a cost recovery basis. Participating chart agents are listed on the AHO website as providing a 'Paper Notices to Mariners' service (www.hydro.gov.au/webapps/jsp/agents/agents-list.jsp). Copies of the notices may not be sold for profit without prior written agreement.

NUMERICAL INDEX OF NOTICES TO MARINERS

Edition No 4

Notices	Aus Chart, INT Chart, ENC Cell, AHP, BA Pubs
143	Aus 83
144	Aus 270, 280, 281
145	Aus 192
146	Aus 262, 830
147	Aus 262, 830
148	Aus 4620, 4720, INT 620, 720
149	Aus 830
150	Aus 240
151	Aus 240
152	Aus 247, 819
153	Aus 249, 251, 823, 824
154	Aus 252, 253, 254
155	Aus 545, 554, 680
156	Aus 512
157	Aus 20, 720
158	Aus 24, 25, 26
159	Aus 118, 336, 759, 4709, 4726, INT 709, 726
160	Aus 65, 327, 328, 742
161	Aus 329
162	Aus 754
163	Aus 134, 776
164	Aus 599, 600, INT 9037, 9036
165	Aus 798, 800
166	Aus 173, 795
167	Aus 766
168	SLB 102, 301, 302
169(T)	Aus 238
170(T)	Aus 835, 839
171(T)	Aus 262, 263, 830
172(T)	Aus 249, 250
173(T)	Aus 249, 250
174(T)	Aus 250
175(T)	Aus 236
176(T)	Aus 256, 827
177(T)	Aus 294
178(T)	Aus 248, 820
179(T)	Aus 4
180(T)	Aus 388, 4622, INT 622
181(P)	Aus 545, 554, 679, 680
182(P)	Aus 392, 393, 543, 666
183(T)	Aus 379, 512, 647, 4621, INT 621
184(P)	Aus 389, 652
185(T)	Aus 293, 299
186(T)	Aus 23, 722
187(T)	Aus 23, 722
188(T)	Aus 24
189(T)	Aus 29, 309, 316, 722, 4721, INT 721
190(T)	Aus 309, 722
191(T)	Aus 335, 755, 756, 4725, 4726, INT 725, 726
192(T)	Aus 81, 751
193(T)	Aus 328, 329, 744
194(T)	Aus 56
195(T)	Aus 327, 328, 4723, INT 723
196(T)	Aus 325, 326
197(T)	Aus 322, 325, 326, 327, 741, 4722, 4723, INT 722, 723
198(T)	Aus 130, 137, 138, 781
199(T)	Aus 143, 155
200(T)	Aus 179, 798, 800
201(T)	SLB 102

NUMERICAL INDEX OF CHARTS AFFECTED

Edition No 4

Aus Chart	Notices
Aus 4	179(T)
Aus 20	157
Aus 23	186(T), 187(T)
Aus 24	158, 188(T)
Aus 25	158
Aus 26	158
Aus 29	189(T)
Aus 56	194(T)
Aus 65	160
Aus 81	192(T)
Aus 83	143
Aus 118	159
Aus 130	198(T)
Aus 134	163
Aus 137	198(T)
Aus 138	198(T)
Aus 143	199(T)
Aus 155	199(T)
Aus 173	166
Aus 179	200(T)
Aus 192	145
Aus 236	175(T)
Aus 238	169(T)
Aus 240	150, 151
Aus 247	152
Aus 248	178(T)
Aus 249	153, 172(T), 173(T)
Aus 250	172(T), 173(T), 174(T)
Aus 251	153
Aus 252	154
Aus 253	154
Aus 254	154
Aus 256	176(T)
Aus 262	146, 147, 171(T)
Aus 263	171(T)
Aus 270	144
Aus 280	144
Aus 281	144
Aus 293	185(T)
Aus 294	177(T)
Aus 299	185(T)
Aus 309	189(T), 190(T)
Aus 316	189(T)
Aus 322	197(T)
Aus 325	196(T), 197(T)
Aus 326	196(T), 197(T)
Aus 327	160, 195(T), 197(T)
Aus 328	160, 193(T), 195(T)
Aus 329	161, 193(T)
Aus 335	191(T)
Aus 336	159
Aus 379	183(T)
Aus 388	180(T)
Aus 389	184(P)

Aus Chart	Notices
Aus 392	182(P)
Aus 393	182(P)
Aus 512	156, 183(T)
Aus 543	182(P)
Aus 545	155, 181(P)
Aus 554	155, 181(P)
Aus 599	164
Aus 600	164
Aus 647	183(T)
Aus 652	184(P)
Aus 666	182(P)
Aus 679	181(P)
Aus 680	155, 181(P)
Aus 720	157
Aus 722	186(T), 187(T), 189(T), 190(T)
Aus 741	197(T)
Aus 742	160
Aus 744	193(T)
Aus 751	192(T)
Aus 754	162
Aus 755	191(T)
Aus 756	191(T)
Aus 759	159
Aus 766	167
Aus 776	163
Aus 781	198(T)
Aus 795	166
Aus 798	165, 200(T)
Aus 800	165, 200(T)
Aus 819	152
Aus 820	178(T)
Aus 823	153
Aus 824	153
Aus 827	176(T)
Aus 830	146, 147, 149, 171(T)
Aus 835	170(T)
Aus 839	170(T)
Aus 4620	148
Aus 4621	183(T)
Aus 4622	180(T)
Aus 4709	159
Aus 4720	148
Aus 4721	189(T)
Aus 4722	197(T)
Aus 4723	195(T), 197(T)
Aus 4725	191(T)
Aus 4726	159, 191(T)
SLB 102	168, 201(T)
SLB 301	168
SLB 302	168

INT Chart	Notices
INT 9037	164
INT 9036	164
INT 620	148
INT 621	183(T)
INT 622	180(T)
INT 709	159
INT 720	148
INT 721	189(T)
INT 722	197(T)
INT 723	195(T), 197(T)
INT 725	191(T)
INT 726	159, 191(T)

143 AUSTRALIA - Products - New Charts and New Editions to be published shortly
 Australian Hydrographic Service

New Charts to be published shortly

<i>Chart</i>	<i>Title</i>	<i>Scale</i>	<i>Expected Publication Date</i>	<i>Remarks</i>
NIL				

New Editions to be published shortly

<i>Chart</i>	<i>Title</i>	<i>Scale</i>	<i>Expected Publication Date</i>	<i>Remarks</i>
NIL				

Charts withdrawn without replacement in May 2019

<i>Chart</i>	<i>Title</i>	<i>Scale</i>	<i>Publication Date</i>
Aus 83	Australia - West Coast - Plans in Western Australia		18 May 2012
Edition 1	(Sheet 5)		
	<i>Recruit Bay</i>	1:25 000	
	<i>Easter Group</i>	1:25 000	

144 AUSTRALIA - Products - New Charts, New Editions, Withdrawn Charts

Australian Hydrographic Office , UKHO

New Charts

Chart	Title and Geographical limits	Scale	Publication Date	Remarks
NIL				

New Electronic Navigation Chart (Aus ENC)

Cell Name	Title	Publication Date	Remarks
NIL			

New Editions and Withdrawn Charts

Chart	Title	Scale	Publication Date	Remarks
AUS 280 Edition 5	Australia - East Coast - Queensland - Plans in Queensland (sheet 3) Plans: Maggie Reef to Eden Reef Flinders Group	1:75 000 1:50 000	22 February 2019	New edition with general updating throughout; including latest bathymetric data. Chart Aus 280 Edition 4 dated 29 August 2014 is now superseded and must be withdrawn from use.
AUS 281 Edition 3	Australia - East Coast - Queensland - First Three Mile Opening to Cape Direction	1:75 000	22 February 2019	New edition with general updating throughout; including latest bathymetric data. Chart Aus 281 Edition 2 dated 15 August 2014 is now superseded and must be withdrawn from use.
AUS 270 Edition 4	Australia - East Coast - Queensland - Plans in Queensland (sheet 2) Plans: Approaches to Heath Reef Cape Melville to Pipon Islands Cooktown Cape Flattery Wharf Howick Group Port Douglas	1:50 000 1:75 000 1:10 000 1:10 000 1:50 000 1:10 000	22 February 2019	New edition with general updating throughout; including latest bathymetric data. Produced with blue contours. Chart Aus 270 Edition 3 dated 15 August 2014 is now superseded and must be withdrawn from use.

Admiralty publication

NP No	Title	Date	Remarks
NP36 & e-NP36	Admiralty Sailing Directions. Indonesia Pilot Volume 1 (Tenth Edition) 2019.	28/2/2019	The Ninth Edition 2017 of NP36 is cancelled.

Chart permanently withdrawn

Charts listed above as withdrawn no longer meet chart carriage requirements and should be marked as "superseded" and replaced with the new chart/ new edition listed prior to passage through the area covered by the new chart.

When placing orders with a chart agent between notice of forthcoming edition and its publication, mariners should advise whether their order pertains to the current edition or the new edition.

For further details refer to the AHO website at www.hydro.gov.au for new edition and new chart stock arrival information.

145 AUSTRALIA - NEW SOUTH WALES - Twofold Bay - Munganno Point - Depth

Australian Hydrographic Office

Aus 192 (East Boyd Bay Wharves) [510/2018]

Delete	depth, 14 ₇ m, and enclosing contour	37° 06'.01 S	149° 55'.40 E
--------	---	--------------	---------------

146 AUSTRALIA - QUEENSLAND - Cairns - Pilot boarding place
Maritime Safety Queensland

Aus 262 [1113/2018]

Move	pilot boarding place with magenta legend, <i>B</i>	16° 48'.59 S	145° 50'.59 E
	to	16° 48'.099 S	145° 50'.100 E

Aus 830 [104/2019]

Insert	pilot boarding place with magenta legend, <i>D</i>	16° 46'.00 S	145° 50'.00 E
--------	--	--------------	---------------

Move	pilot boarding place with magenta legend, <i>B</i>	16° 48'.59 S	145° 50'.59 E
	to	16° 48'.10 S	145° 50'.10 E

147 AUSTRALIA - QUEENSLAND - Cairns - Topmark
Maritime Safety Queensland

Aus 262 [146/2019]

Insert	port lateral topmark	16° 50'.01 S	145° 49'.90 E
--------	----------------------	--------------	---------------

Aus 830 [146/2019]

Insert	port lateral topmark	16° 50'.01 S	145° 49'.90 E
--------	----------------------	--------------	---------------

148 AUSTRALIA - QUEENSLAND - Cape York - Ship Reporting System
Maritime Safety Queensland

Aus 4620 (INT 620) [906/2018]

Insert	accompanying block	10° 50' S	142° 00' E
--------	--------------------	-----------	------------

Aus 4720 (INT 720) [1017/2018]

Insert	accompanying block	10° 37' S	142° 30' E
--------	--------------------	-----------	------------

149 AUSTRALIA - QUEENSLAND - Fitzroy Island - Obstruction southwards
Australian Hydrographic Office

Aus 830 [147/2019]

Insert	legend, <i>ED</i> , centred on	17° 01'.80 S	145° 59'.05 E
--------	--------------------------------	--------------	---------------

150 AUSTRALIA - QUEENSLAND - Great Sandy Strait - Fraser Island - Obstruction
Maritime Safety Queensland Notice 52/2019

Aus 240 [1071/2018]

Insert	danger line between	25° 37'.61 S	152° 58'.50 E
		25° 37'.55 S	152° 58'.46 E
		25° 37'.50 S	152° 58'.48 E

151 AUSTRALIA - QUEENSLAND - Great Sandy Strait - Stewart Island - Nav aids
Former Notices - 1035(T)/2017, 831(T)/2018 are cancelled
Maritime Safety Queensland Notice 63/2019

Aus 240 [150/2019]

Insert	starboard lateral spar buoy, without topmark	25° 36'.82 S	152° 57'.57 E
--------	--	--------------	---------------

Replace	beacon with starboard lateral conical buoy, without topmark	25° 37'.76 S	152° 58'.36 E
	beacon with starboard lateral spar buoy, without topmark	25° 36'.87 S	152° 57'.36 E
	beacon with starboard lateral spar buoy, without topmark	25° 36'.83 S	152° 57'.47 E

152 AUSTRALIA - QUEENSLAND - Keppel bay - Cawarral Creek - Nav aids

Maritime Safety Queensland Notice 45/2019

Aus 247 [53/2019]

Insert	special conical light buoy, <i>Fl. Y. 2-5s</i> , with topmark	23° 20'.26 S	150° 49'.24 E
	legend, <i>Channel marked by buoys and beacons</i> , centred on	23° 18'.24 S	150° 46'.92 E

Amend	light to <i>Fl. Y. 2-5s</i>	23° 19'.5 S	150° 47'.7 E
-------	-----------------------------	-------------	--------------

Delete	beacon	23° 19'.3 S	150° 47'.5 E
--------	--------	-------------	--------------

Aus 819 [1116/2018]

Insert	special conical light buoy, <i>Fl. Y. 2-5s</i> , with topmark	23° 20'.26 S	150° 49'.24 E
--------	---	--------------	---------------

Delete	light	23° 19'.6 S	150° 47'.6 E
--------	-------	-------------	--------------

153 AUSTRALIA - QUEENSLAND - Mackay - VTS

Australian Maritime Safety Authority

Aus 249 [1009/2018]

Insert	magenta legend, <i>REEFVTS (see SRS Note)</i> , centred on	21° 03'.35 S	149° 17'.45 E
	magenta legend, <i>REEFVTS (see SRS Note)</i> , centred on	21° 01'.71 S	149° 36'.22 E
	magenta legend, <i>REEFVTS (see SRS Note)</i> , centred on	21° 03'.97 S	149° 52'.91 E
	magenta legend, <i>REEFVTS (see SRS Note)</i> , centred on	21° 16'.83 S	149° 56'.08 E
	magenta legend, <i>REEFVTS (see SRS Note)</i> , centred on	21° 20'.47 S	149° 41'.70 E
	magenta legend, <i>REEFVTS (see SRS Note)</i> , centred on	21° 21'.01 S	149° 21'.00 E

Aus 251 [1121/2018]

Insert	magenta legend, <i>REEFVTS (see SRS Note)</i> , centred on	21° 01'.74 S	149° 35'.97 E
--------	--	--------------	---------------

Aus 823 [951/2018]

Insert	magenta legend, <i>REEFVTS (see SRS Note)</i> , centred on	21° 20'.91 S	149° 28'.76 E
	magenta legend, <i>REEFVTS (see SRS Note)</i> , centred on	21° 16'.98 S	149° 56'.14 E
	magenta legend, <i>REEFVTS (see SRS Note)</i> , centred on	21° 01'.60 S	149° 41'.38 E

Aus 824 [951/2018]

Insert	magenta legend, <i>REEFVTS (see SRS Note)</i> , centred on	21° 02'.24 S	149° 26'.45 E
	magenta legend, <i>REEFVTS (see SRS Note)</i> , centred on	21° 01'.61 S	149° 41'.39 E

154 AUSTRALIA - QUEENSLAND - Whitsunday Island - Reef Point - Topmark

Former Notice - 1147(T)/2018 is cancelled

Maritime Safety Queensland

Aus 252 [3/2019]

Delete	topmark	20° 17'.5 S	148° 54'.7 E
--------	---------	-------------	--------------

Aus 253 [1009/2018]

Delete	topmark	20° 17'.46 S	148° 54'.68 E
--------	---------	--------------	---------------

Aus 254 (Fitzalan Passage) [3/2019]

Delete	topmark	20° 17'.46 S	148° 54'.68 E
--------	---------	--------------	---------------

155 PAPUA NEW GUINEA - Cape Wunita to Kabakaul Bay - Depths

LADS Flight

Aus 545 [38/2016]

Insert	depth, 8 ₄ m, enclosed by contour	4° 20'.58 S	152° 24'.37 E
	depth, 7 ₉ m, semi enclosed by contour to NW	4° 20'.16 S	152° 20'.53 E

Aus 554 [134/2017]

Insert	depth, 8 ₄ m, enclosed by contour	4° 20'.58 S	152° 24'.37 E
	depth, 7 ₉ m, semi enclosed by contour to NW	4° 20'.16 S	152° 20'.53 E

Aus 680 [813/2018]

Insert	depth, 8 ₄ m, enclosed by contour	4° 20'.58 S	152° 24'.37 E
	depth, 7 ₉ m, semi enclosed by contour to NW	4° 20'.16 S	152° 20'.53 E

156 PAPUA NEW GUINEA - Deboyne Lagoon - Beacons withdrawn

National Maritime Safety Authority PNG

Aus 512 [1077/2017]

Delete	beacon	10° 42'.8 S	152° 21'.2 E
	beacon	10° 49'.9 S	152° 23'.5 E
	beacon	10° 45'.3 S	152° 24'.2 E

157 AUSTRALIA - NORTHERN TERRITORY - Clarence Strait - Marine farms

UKHO

Aus 20 [107/2019]

Insert	accompanying note	12° 05'.65 S	131° 17'.35 E
--------	-------------------	--------------	---------------

Aus 720 [344/2016]

Insert	accompanying note	12° 05'.65 S	131° 17'.35 E
--------	-------------------	--------------	---------------

158 AUSTRALIA - NORTHERN TERRITORY - Darwin - Cullen Bay - Nav aids; infrastructure; depths

Department of Infrastructure, Planning and Logistics NT

Aus 24 [1124/2018]

Insert	accompanying block A	12° 27'.17 S	130° 49'.00 E
	accompanying block B	12° 27'.11 S	130° 51'.07 E

Aus 25 [482/2018]

Delete	depth, 0 ₉ m	12° 27'.11 S	130° 49'.08 E
--------	-------------------------	--------------	---------------

Aus 26 [1124/2018]

Delete	depth, 0 ₉ m	12° 27'.11 S	130° 49'.08 E
--------	-------------------------	--------------	---------------

159 AUSTRALIA - WESTERN AUSTRALIA - Albany - Light withdrawn

Southern Ports Authority - Port of Esperance

Aus 118 [1022/2018]

Delete	light	34° 56'.7 S	117° 48'.3 E
--------	-------	-------------	--------------

Aus 336 [59/2019]

Delete	light	34° 56'.7 S	117° 48'.3 E
--------	-------	-------------	--------------

Aus 759 [112/2019]

Delete	light	34° 56'.7 S	117° 48'.3 E
--------	-------	-------------	--------------

Aus 4709 (INT 709) [867/2017]

Delete	aeronautical radiobeacon	34° 56'.7 S	117° 48'.3 E
--------	--------------------------	-------------	--------------

Aus 4726 (INT 726) [1128/2018]

Delete	aeronautical radiobeacon	34° 56'.7 S	117° 48'.3 E
--------	--------------------------	-------------	--------------

160 AUSTRALIA - WESTERN AUSTRALIA - Lowendal Islands - Marine farm
Department of Primary Industries and Regional Development

Aus 65 [718/2018]

Delete	marine farm, centred on	20° 37'.1 S	115° 31'.1 E
	MF note, centred on	20° 50'.1 S	115° 21'.7 E

Aus 327 [964/2018]

Delete	marine farm, centred on	20° 37'.1 S	115° 31'.1 E
--------	-------------------------	-------------	--------------

Aus 328 [111/2019]

Delete	marine farm, centred on	20° 37'.1 S	115° 31'.1 E
--------	-------------------------	-------------	--------------

Aus 742 [1080/2018]

Delete	marine farm, centred on	20° 37'.1 S	115° 31'.1 E
--------	-------------------------	-------------	--------------

161 AUSTRALIA - WESTERN AUSTRALIA - Murion Islands - Chart note
UKHO

Aus 329 [111/2019]

Insert	accompanying note	22° 20'.0 S	113° 55'.5 E
--------	-------------------	-------------	--------------

162 AUSTRALIA - WESTERN AUSTRALIA - Pinaroo Point - Navlines
Australian Hydrographic Office

Aus 754 [109/2019]

Move	legend, Leading Lights 100° (see Note)	31° 43'.9 S	115° 33'.2 E
	to	31° 44'.82 S	115° 38'.92 E
	legend, Leading Lights 042.5° (see Note)	31° 52'.2 S	115° 36'.7 E
	to	31° 48'.98 S	115° 40'.21 E
Delete	continuous line between	31° 44'.7 S	115° 37'.9 E
		31° 43'.9 S	115° 32'.4 E
	continuous line between	31° 49'.3 S	115° 39'.9 E
		31° 52'.9 S	115° 36'.0 E

163 AUSTRALIA - SOUTH AUSTRALIA - Port Lincoln - Bass Shoal - Wreck
Australian Hydrographic Office

Aus 134 [154/2018]

Replace	fish haven, with safe clearance depth, 10m, enclosed by danger circle with legend <i>Wk</i>	34° 40'.91 S	135° 52'.48 E
---------	---	--------------	---------------

Aus 776 [817/2018]

Insert	safe clearance depth, 10m, enclosed by danger circle with legend <i>Wk</i>	34° 40'.91 S	135° 52'.48 E
--------	--	--------------	---------------

164 SOUTHERN OCEAN - Welch Island - Mawson - Rock
Royal Australian Navy

Aus 599 (INT 9037) [NC 14/1/2011]

Insert	rock which does not cover, radius 25m, centred on	67° 32'.123 S	062° 48'.054 E
--------	---	---------------	----------------

Aus 600 (INT 9036) [965/2018]

Insert	rock which does not cover, enclosed by danger circle	67° 34'.120 S	062° 57'.070 E
	rock which does not cover, radius 25m, centred on	67° 32'.123 S	062° 48'.054 E

165 AUSTRALIA - TASMANIA - Armstrong Channel - Coastline

Land Tasmania

Aus 798 [66/2019]

Insert	accompanying block	40° 28'.95 S	148° 07'.38 E
--------	--------------------	--------------	---------------

Aus 800 [777/2018]

Insert	accompanying block	40° 28'.95 S	148° 07'.38 E
--------	--------------------	--------------	---------------

166 AUSTRALIA - TASMANIA - D'Entrecasteaux Channel - Woodbridge - Light amended

Marine and Safety Tasmania

Aus 173 [65/2019]

Amend	light to <i>Fl.Bu.5s</i>	43° 09'.6 S	147° 14'.5 E
-------	--------------------------	-------------	--------------

Aus 795 [23/2019]

Amend	light to <i>Fl.Bu.5s</i>	43° 09'.6 S	147° 14'.5 E
-------	--------------------------	-------------	--------------

167 AUSTRALIA - TASMANIA - Great Oyster Bay - Depths; ZOC diagram

LADS Flight

Aus 766 [724/2018]

Insert	accompanying block A	42° 10'.0 S	148° 10'.0 E
	accompanying block B	42° 20'.0 S	148° 10'.0 E
	accompanying ZOC diagram	41° 50'.0 S	148° 03'.5 E

168 SOLOMON ISLANDS - New Georgia Group - Visuvisu Point to Nakaza Island - Nav aids

UKHO

SLB 102 (Port Noro) [115/2019]

Insert	light beacon, <i>Fl.G.5s 10m 4M</i> , with rectangular daymark	8° 15'.417 S	157° 11'.345 E
	light beacon, <i>Fl.G.5s 8m 4M</i> , with rectangular daymark	8° 15'.304 S	157° 11'.364 E
	dashed line in a direction 009.5° for a distance of 1100m, thence a continuous line for a distance of 4950m, with legend <i>189.5°</i> , emanating from light beacon	8° 15'.417 S	157° 11'.345 E

Delete	dashed and continuous line with legend, emanating from light beacon	8° 15'.42 S	157° 11'.35 E
	light beacon	8° 15'.42 S	157° 11'.35 E
	light beacon	8° 15'.31 S	157° 11'.37 E

SLB 102 (Blackett Strait) [115/2019]

Insert	light beacon, <i>Fl.G.5s 10m 4M</i> , with rectangular daymark	8° 15'.42 S	157° 11'.35 E
	light beacon, <i>Fl.G.5s 8m 4M</i> , with rectangular daymark	8° 15'.30 S	157° 11'.36 E
	dashed line in a direction 009.5° for a distance of 1100m, thence a continuous line for a distance of 6300m, with legend <i>189.5°</i> , emanating from light beacon	8° 15'.42 S	157° 11'.35 E

Amend	light to <i>Fl(2)10s 10m 10M</i>	8° 08'.3 S	157° 09'.6 E
-------	----------------------------------	------------	--------------

Delete	dashed and continuous line with legend, emanating from light beacon	8° 15'.4 S	157° 11'.3 E
	light beacon	8° 15'.4 S	157° 11'.4 E
	light beacon	8° 15'.3 S	157° 11'.4 E

SLB 301 [1139/2018]

Insert	light beacon, <i>Fl.10s 10m 10M</i>	7° 52'.21 S	156° 29'.18 E
--------	-------------------------------------	-------------	---------------

Delete	light beacon	7° 52'.6 S	156° 29'.2 E
--------	--------------	------------	--------------

SLB 302 [969/2018]

Amend	light range to <i>5M</i>	8° 20'.2 S	157° 13'.8 E
	light to <i>Fl(2)10s 10m 10M</i>	7° 57'.6 S	157° 30'.2 E
	light to <i>Fl(2)10s 10m 10M</i>	8° 08'.3 S	157° 09'.6 E

169(T)/2019 AUSTRALIA - QUEENSLAND - Brisbane River - Quarries Reach - Wreck
Maritime Safety Queensland Notice 74(T)/2019

A wreck marked by a special light buoy, *Fl.Y.3s*, exists in position 27° 26'.77 S 153° 05'.55 E.

Chart temporarily affected - Aus 238

170(T)/2019 AUSTRALIA - QUEENSLAND - Cairncross Islets - Wreck salvaged
Former Notice - 70(T)/2019 is cancelled
Maritime Safety Queensland

Cancel this notice on receipt.

Chart formerly affected - Aus 835 - Aus 839

171(T)/2019 AUSTRALIA - QUEENSLAND - Cairns - Dredging operations completed
Former Notice - 683(T)/2018 is cancelled
Maritime Safety Queensland

Cancel this notice on receipt.

Chart formerly affected - Aus 262 - Aus 263 - Aus 830

172(T)/2019 AUSTRALIA - QUEENSLAND - Freshwater Point to Slade Islet - Scientific Instruments
Maritime Safety Queensland Notice 71/2019

Special light buoys exist as follows:

<i>Position</i>	<i>Remarks</i>
21° 24'.54 S 149° 20'.71 E	<i>Fl.Y.6s</i>
21° 05'.58 S 149° 14'.45 E	<i>Fl.Y.6s</i>

Chart temporarily affected - Aus 249 - Aus 250

173(T)/2019 AUSTRALIA - QUEENSLAND - Freshwater Point to Slade Islet - Light buoys recovered
Former Notice - 972(T)/2018 is cancelled
Maritime Safety Queensland

Cancel this notice on receipt.

Chart formerly affected - Aus 249 - Aus 250

174(T)/2019 AUSTRALIA - QUEENSLAND - Hay Point - Scientific instrument recovered
Former Notice - 401(T)/2016 is cancelled
Maritime Safety Queensland

Cancel this notice on receipt.

Chart formerly affected - Aus 250

175(T)/2019 AUSTRALIA - QUEENSLAND - Moreton Bay - Scientific instrument
Maritime Safety Queensland Notice 84(T)/2019

A scientific instrument marked by a special light buoy, *Fl(5)Y.20s* exists in position 27° 15'.00 S 153° 12'.00 E.

Chart temporarily affected - Aus 236

176(T)/2019 AUSTRALIA - QUEENSLAND - Rattlesnake Island - Live firing completed

Former Notice - 977(T)/2018 is cancelled

Maritime Safety Queensland Notice 432(T)/2018, 433(T)/2018

Cancel this notice on receipt.

Chart formerly affected - Aus 256 - Aus 827

177(T)/2019 AUSTRALIA - QUEENSLAND - Red Island Point - Wreck

Former Notice - 164(T)/2018 is cancelled

Maritime Safety Queensland Notice 83(T)/2019

A wreck marked by a special light buoy, *Fl.Y.4s*, exists in position 10° 50'.66 S 142° 22'.03 E.

Chart temporarily affected - Aus 294

178(T)/2019 AUSTRALIA - QUEENSLAND - Shoalwater Bay - Live firing

Maritime Safety Queensland Notice 76(T)/2019

Live firing will be conducted in the Shoalwater Bay training area during the period 23 March to 29 March 2019.

A marine danger area extends to all internal waters bounded by the following positions:

22° 35'.87 S 150° 28'.80 E
 22° 33'.77 S 150° 32'.70 E
 22° 33'.23 S 150° 35'.28 E
 22° 38'.18 S 150° 43'.15 E
 22° 40'.00 S 150° 38'.00 E
 22° 35'.87 S 150° 28'.80 E.

All waters, creeks, beaches and other areas within the declared marine danger area are not available for access.

There will be a safe anchorage available at Freshwater, Port Clinton, West Water Port Clinton, South Arm Port Clinton, Pearl Bay, Island Head Creek and Supply Bay Townshend Island.

Mariners are advised to keep clear of this area throughout the above times.

Chart temporarily affected - Aus 248 - Aus 820

179(T)/2019 AUSTRALIA - QUEENSLAND - Weipa - South Channel - Light altered

Maritime Safety Queensland Notice 67(T)/2019

The front lead light, *F.G.14m (F Day)*, (12° 40'.01 S 141° 50'.46 E), has been temporarily altered to *F.Bu.14m (F Day)*.

Chart temporarily affected - Aus 4

180(T)/2019 PAPUA NEW GUINEA - Condor Point - Light unlit

National Maritime Safety Authority PNG Warning 4/2019

The light, *Fl(2)8s 15m 10M* (4° 07'.08 S 144° 51'.68 E), is unlit.

Chart temporarily affected - Aus 388 - Aus 4622 (INT 622)

181(P)/2019 PAPUA NEW GUINEA - Duke of York Island - Shoaling
LADS Flight

Latest survey shows shoaler depths than those charted may exist in an area bounded by the following positions:

4° 07'.43 S 152° 28'.17 E
4° 10'.10 S 152° 30'.20 E
4° 11'.35 S 152° 30'.07 E
4° 13'.66 S 152° 28'.38 E
4° 15'.11 S 152° 25'.69 E
4° 13'.13 S 152° 22'.60 E
4° 11'.41 S 152° 23'.70 E
4° 07'.06 S 152° 23'.88 E
4° 06'.29 S 152° 24'.62 E
4° 06'.17 S 152° 25'.41 E.

Mariners are advised to navigate with caution in the area.

Charts will be updated in due course.

Chart which will be affected - Aus 545 - Aus 554 - Aus 679 - Aus 680

182(P)/2019 PAPUA NEW GUINEA - Kavieng to Neitab Island - Shoaling
LADS Flight

Latest survey shows shoaler depths than those charted may exist in an area bounded by the coast and the following positions:

2° 22'.61 S 150° 09'.71 E
2° 21'.43 S 150° 08'.54 E
2° 20'.33 S 150° 09'.36 E
2° 18'.98 S 150° 11'.37 E
2° 18'.08 S 150° 15'.72 E
2° 21'.25 S 150° 23'.71 E
2° 27'.18 S 150° 31'.04 E
2° 34'.90 S 150° 35'.68 E
2° 36'.12 S 150° 42'.35 E
2° 36'.96 S 150° 42'.41 E
2° 36'.40 S 150° 35'.77 E
2° 40'.83 S 150° 31'.32 E.

Shoaler depths may also exist between the Kavieng coast (2° 35'.21 S 150° 47'.31 E) and the islands (Nusa, Nusalik and Nago).

Mariners are advised to navigate with caution in the area.

Charts will be updated in due course.

Chart which will be affected - Aus 392 - Aus 393 - Aus 543 - Aus 666

183(T)/2019 PAPUA NEW GUINEA - Pananiu Island to Boera Head - Lights unlit
National Maritime Safety Authority PNG Warning 5/2019, 6/2019

The following lights are unlit;

<i>Position</i>	<i>Remarks</i>
10° 47'.21 S 152° 00'.44 E	<i>Fl.4s 16m 10M</i>
9° 23'.39 S 147° 00'.85 E	<i>Fl.2.5s 33m 10M</i>

Chart temporarily affected - Aus 379 - Aus 512 - Aus 647 - Aus 4621 (INT 621)

184(P)/2019 PAPUA NEW GUINEA - Vanimo Harbour - Shoaling
LADS Flight

Latest survey shows shoaler depths than those charted may exist in an area bounded by the coast and the following positions:

02° 38'.94 S 141° 13'.68 E
02° 38'.20 S 141° 14'.03 E
02° 39'.50 S 141° 19'.03 E
02° 42'.75 S 141° 24'.56 E
02° 43'.92 S 141° 24'.09 E.

Mariners are advised to navigate with caution in the area.

Charts will be updated in due course.

Chart which will be affected - Aus 389 - Aus 652

185(T)/2019 AUSTRALIA - TORRES STRAIT - Thursday Island - Harbour works completed
Former Notice - 1035(T)/2018 is cancelled
Maritime Safety Queensland

Cancel this notice on receipt.

Chart formerly affected - Aus 293 - Aus 299

186(T)/2019 AUSTRALIA - NORTHERN TERRITORY - Apsley Strait - Light buoy restored
Former Notice - 413(T)/2018 is cancelled
Department of Infrastructure, Planning and Logistics NT Coastal Notice 1(T)/2019

Cancel this notice on receipt.

Chart formerly affected - Aus 23 - Aus 722

187(T)/2019 AUSTRALIA - NORTHERN TERRITORY - Aspley Strait - Medina Inlet - Light buoys restored
Former Notice - 31(T)/2019 is cancelled
Department of Infrastructure, Planning and Logistics NT Notice 1/2019

Cancel this notice on receipt.

Chart formerly affected - Aus 23 - Aus 722

188(T)/2019 AUSTRALIA - NORTHERN TERRITORY - Darwin - Cullen Bay - Light relit
Former Notice - 1037(T)/2018 is cancelled
Department of Infrastructure, Planning and Logistics NT

Cancel this notice on receipt.

Chart formerly affected - Aus 24

189(T)/2019 AUSTRALIA - NORTHERN TERRITORY - Fish Reef - Light relit
Former Notice - 461(T)/2018 is cancelled
Department of Infrastructure, Planning and Logistics NT Notice1/2019

Cancel this notice on receipt.

Chart formerly affected - Aus 29 - Aus 309 - Aus 316 - Aus 722 - Aus 4721 (INT 721)

190(T)/2019 AUSTRALIA - TIMOR SEA - Beagle Gulf - Drill rig
Australian Maritime Safety Authority Auscoast Warning 36/2019

Drill rig *Development Driller 1* is moored in position 12° 06'.71 S 130° 19'.71 E.

Chart temporarily affected - Aus 309 - Aus 722

191(T)/2019 AUSTRALIA - WESTERN AUSTRALIA - Cape Naturaliste - Light altered
 Australian Maritime Safety Authority Auscoast Warning 35/2019

The light, *Fl(2)10s 123m 26M* (33° 32'.24 S 115° 01'.12 E), has been altered to *Fl.10s 123m 21M*.

Chart temporarily affected - Aus 335 - Aus 755 - Aus 756 - Aus 4725 (INT 725) - Aus 4726 (INT 726)

192(T)/2019 AUSTRALIA - WESTERN AUSTRALIA - Geraldton - Light buoy off station
 Mid West Ports Notice 5/2019

The safe water light buoy, *Iso.3s* (28° 46'.19 S 114° 31'.72 E), is off station. A virtual safe water mark, *South Fairway Buoy*, exists in situ.

A virtual port lateral mark exists in position (28° 45'.47 S 114° 33'.93 E)

Mariners are advised to navigate with caution in the area.

Chart temporarily affected - Aus 81 - Aus 751

193(T)/2019 AUSTRALIA - WESTERN AUSTRALIA - Muiron Islands - Subsea operations; pipeline operations complete

Former Notice - 938(T)/2018 is cancelled
 Technip FMC

Cancel this notice on receipt.

Chart formerly affected - Aus 328 - Aus 329 - Aus 744

194(T)/2019 AUSTRALIA - WESTERN AUSTRALIA - Port Walcott - Point Samson - Dredging operations completed

Former Notice - 749(T)/2018 is cancelled
 Department of Transport WA

Cancel this notice on receipt.

Chart formerly affected - Aus 56

195(T)/2019 AUSTRALIA - WESTERN AUSTRALIA - Rankin Bank - Seismic survey northwards
 Petroleum Geo-Services

MV *Ramform Hyperion*, with a 8025m towed array, and support vessels *Thor Modi* and *No Limit* are conducting a seismic survey in an area bounded by the following positions:

18° 22'.12 S 114° 21'.19 E
 18° 53'.07 S 114° 21'.19 E
 18° 53'.07 S 116° 01'.38 E
 18° 22'.12 S 116° 01'.38 E.

Mariners are advised to navigate with caution in the area. 5M clearance requested.

Chart temporarily affected - Aus 327 - Aus 328 - Aus 4723 (INT 723)

196(T)/2019 AUSTRALIA - WESTERN AUSTRALIA - Rowley Shoals - Scientific instruments
 University of Western Australia

Scientific instruments exist as follows:

<i>Position</i>	<i>Remarks</i>
17° 44'.77 S 118° 58'.77 E	19m below surface
17° 57'.84 S 119° 07'.68 E	18m below surface
18° 00'.22 S 119° 09'.37 E	18m below surface
18° 00'.22 S 119° 09'.37 E	120m below surface
18° 00'.22 S 119° 09'.37 E	special spherical light buoy, <i>Fl.4s</i>

Chart temporarily affected - Aus 325 - Aus 326

197(T)/2019 AUSTRALIA - WESTERN AUSTRALIA - Scott Reef to Rankin Bank - Scientific instruments
RPS MetOcean

Scientific instruments exist as follows:

<i>Position</i>	<i>Remarks</i>
14° 31'.31 S 121° 33'.95 E	23m below surface
15° 45'.42 S 120° 47'.88 E	343m below surface
17° 08'.44 S 119° 53'.48 E	388m below surface
17° 39'.28 S 119° 11'.53 E	322m below surface
17° 53'.86 S 118° 51'.39 E	18m below surface
18° 16'.03 S 118° 16'.07 E	237m below surface
18° 40'.92 S 117° 36'.69 E	259m below surface
19° 00'.13 S 117° 06'.03 E	264m below surface
19° 13'.48 S 116° 39'.90 E	163m below surface
19° 24'.96 S 116° 15'.57 E	123m below surface
19° 30'.03 S 116° 08'.08 E	120m below surface.

Chart temporarily affected - Aus 322 - Aus 325 - Aus 326 - Aus 327 - Aus 741 - Aus 4722 (INT 722) - Aus 4723 (INT 723)

198(T)/2019 AUSTRALIA - SOUTH AUSTRALIA - Port Adelaide - Dredging operations; nav aids

Former Notice - 1221(T)/2016 is cancelled

Department of Planning, Transport and Infrastructure SA Notice 3/2019, 8/2019

In preparation for dredging operations, nav aids marking the southern edge of the Entrance Channel, including leading light beacons in positions 34° 46'.71 S 138° 21'.59 E and 34° 46'.74 S 138° 21'.81 E, and north of the eastern Outer Harbor swing circle dredged limit are being removed.

Nav aids that have been removed may be replaced with Virtual Aids to Navigation or temporary buoys.

Mariners are advised to navigate with caution in the area.

Chart temporarily affected - Aus 130 - Aus 137 - Aus 138 - Aus 781

199(T)/2019 AUSTRALIA - VICTORIA - Port Phillip - Mordialloc - Light unlit

Parks Victoria Notice 21(T)/2019

The light, *Fl.R.2s 3M* (38° 00'.78 S 147° 04'.98 E), is unlit.

Chart temporarily affected - Aus 143 - Aus 155

200(T)/2019 AUSTRALIA - TASMANIA - Cape Barren Island to Preservation Island - Uncharted rocks and coastline inaccuracies charted

Former Notice - 94(P)/2019 is cancelled

Land Tasmania

Cancel this notice on receipt.

Chart formerly affected - Aus 179 - Aus 798 - Aus 800

201(T)/2019 SOLOMON ISLANDS - Port Noro - Light beacon unreliable

Former Notice - 142(T)/2019 is cancelled

Solomon Islands Maritime Safety Administration Notice 1/2019, UKHO

The light beacon, *Fl.G.5s 10m 4M* (8° 15'.42 S 157° 11'.35 E), is unreliable.

Chart temporarily affected - SLB 102

II

HYDROGRAPHIC REPORTS

NIL

III

NAVIGATION WARNINGS

The Australian Hydrographic Office will no longer compile Section III of the Australian Notices to Mariners. For the most up to date navigation warnings please refer to:

AMSA Navigation Warnings

<http://amsa.gov.au/search-and-rescue/distress-and-safety-comms/msi/msi-email/index.asp>

New Zealand Notices to Mariners (Navarea XIV warnings)

<http://www.linz.govt.nz/sea/maritime-safety/notices-mariners>

To accompany Australian Notice to Mariners 157/2019

MARINE FARMS

Marine farms, which may be floating or fixed structures and their associated moorings should be avoided. The farms are generally marked by buoys or beacons, which may be lit. Their charted positions are approximate.

Note for chart Aus 20

To accompany Australian Notice to Mariners 157/2019

MARINE FARMS

Marine farms, which may be floating or fixed structures and their associated moorings should be avoided. The farms are generally marked by buoys or beacons, which may be lit. Their charted positions are approximate.

Note for chart Aus 720

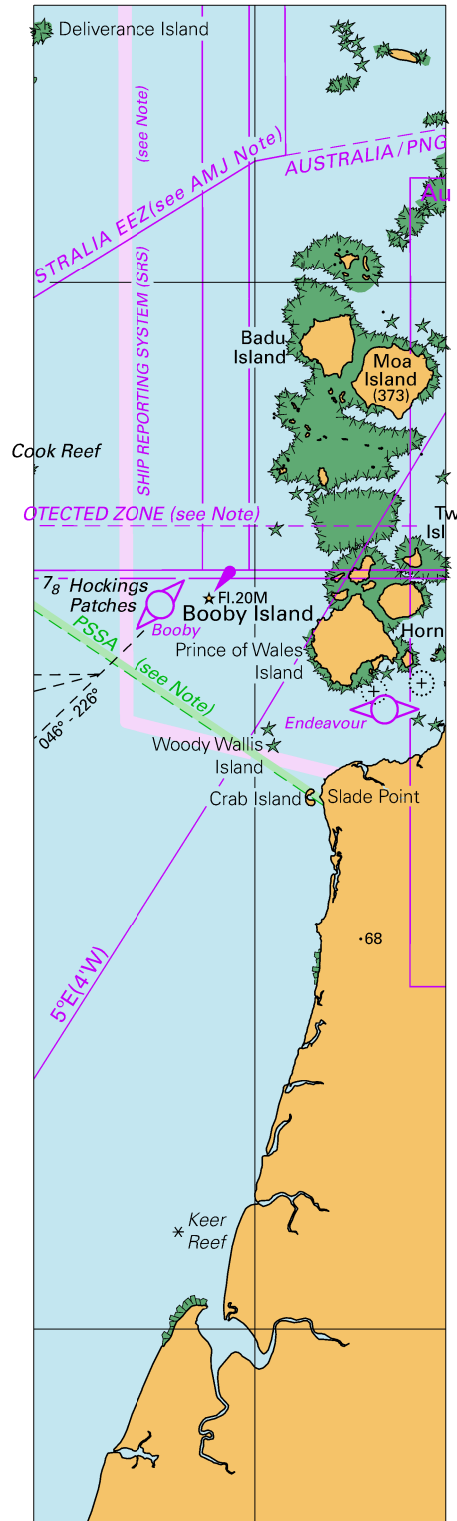
To accompany Australian Notice to Mariners 161/2019

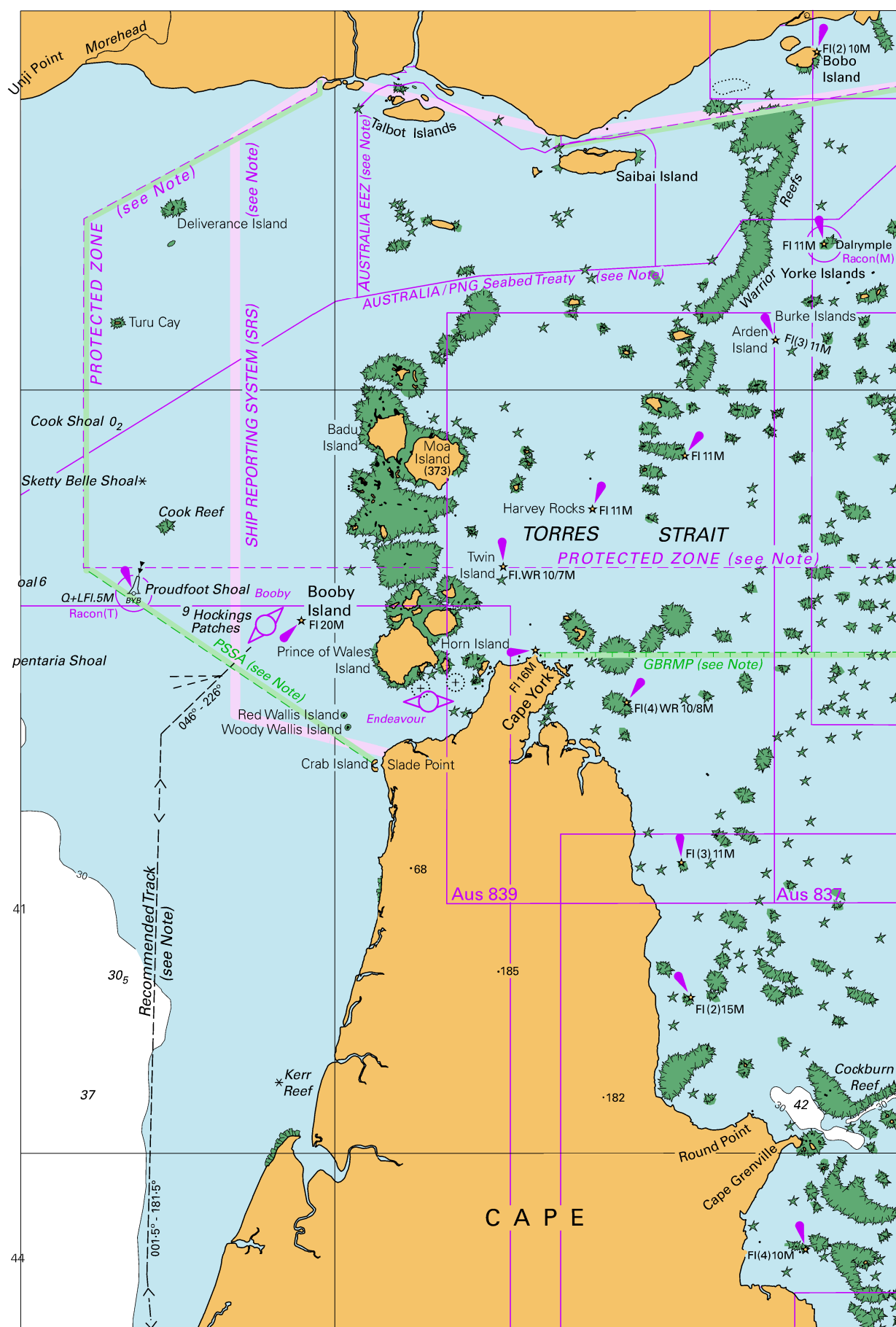
OIL AND GAS PIPELINES

Pipelines carry flammable oil or gas at high pressure. A damaged pipeline could cause an explosion, resulting in damage to a vessel or the environment. Pipelines may pass over bottom undulations, be buried or protrude above the seabed reducing charted depths. Vessels should avoid anchoring, trawling or conducting other underwater operations in the vicinity of the pipelines.

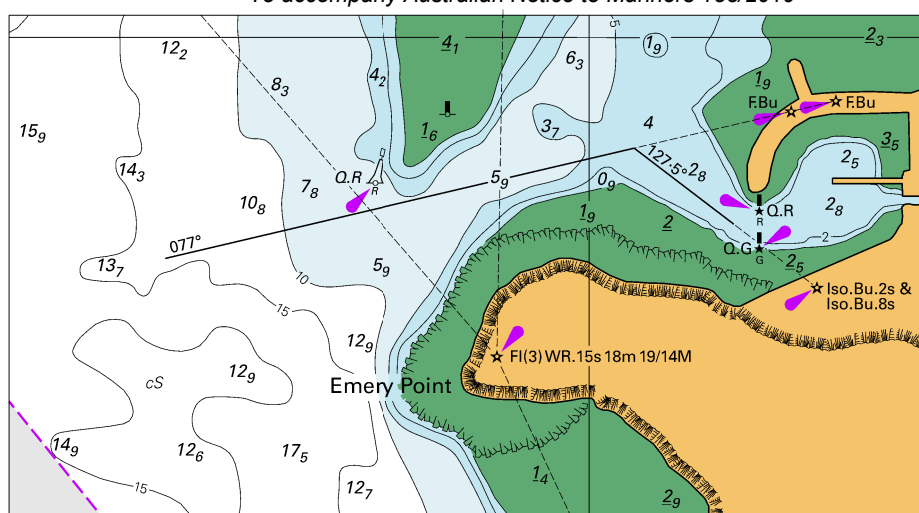
Note for chart Aus 329

To accompany Australian Notice to Mariners 148/2019





To accompany Australian Notice to Mariners 158/2019

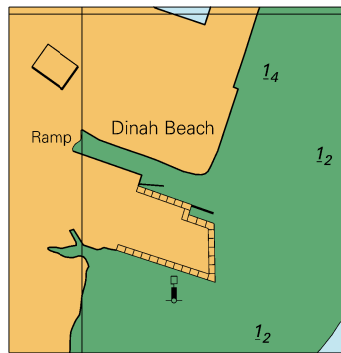


Block A for chart Aus 24

© Commonwealth of Australia 2019

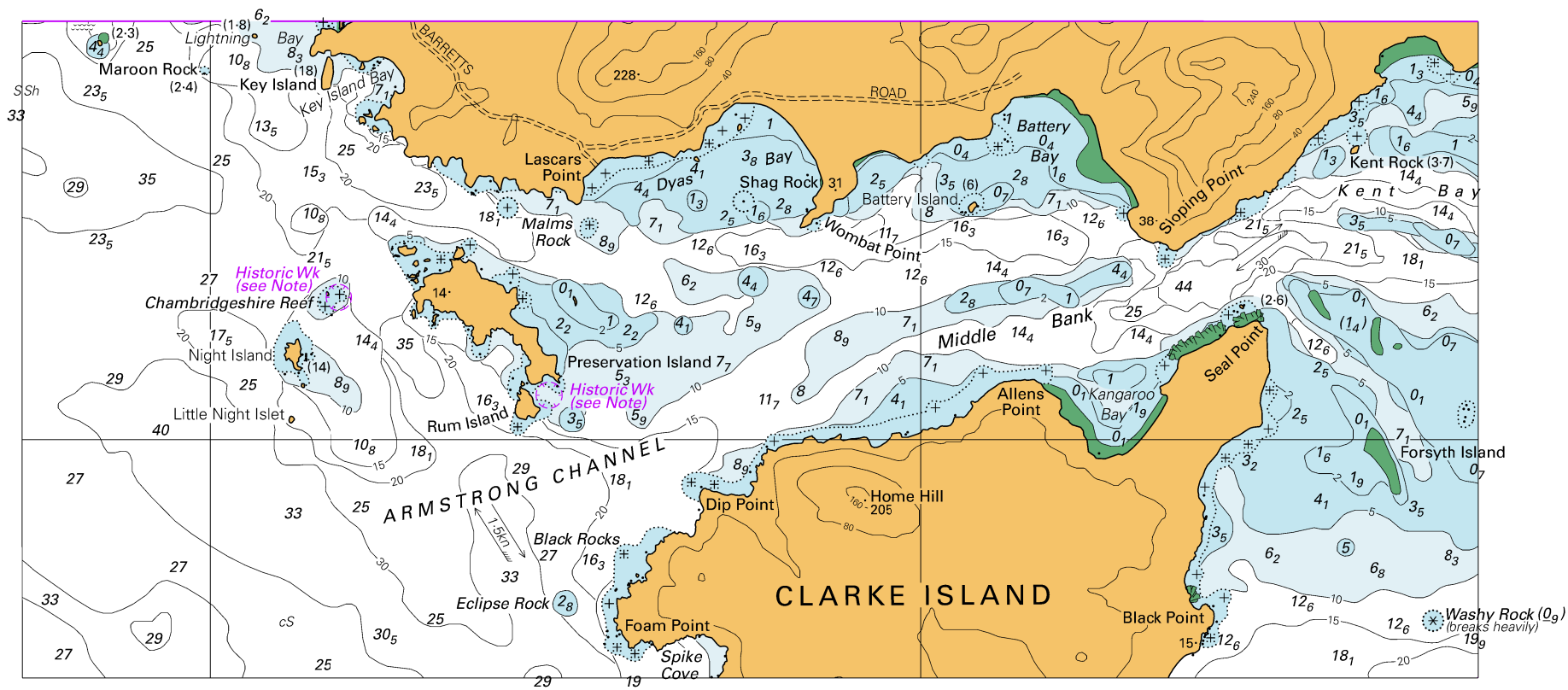
(121.7 x 66.4mm)

To accompany Australian Notice to Mariners 158/2019



Block B for chart Aus 24 (44.6 x 45.6mm)
© Commonwealth of Australia 2019

To accompany Australian Notice to Mariners 165/2019

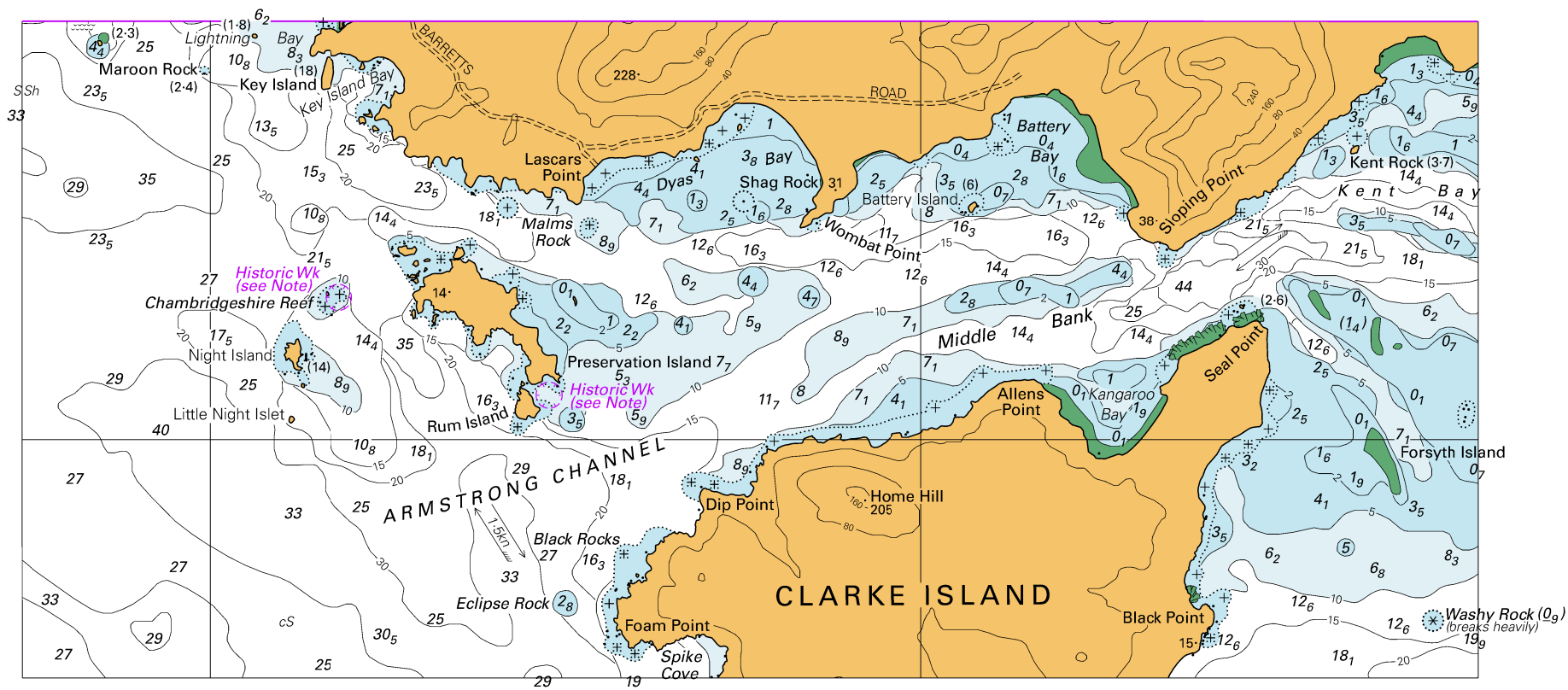


Block for chart Aus 798

© Commonwealth of Australia 2019

(225.5 x 101.7mm)

To accompany Australian Notice to Mariners 165/2019

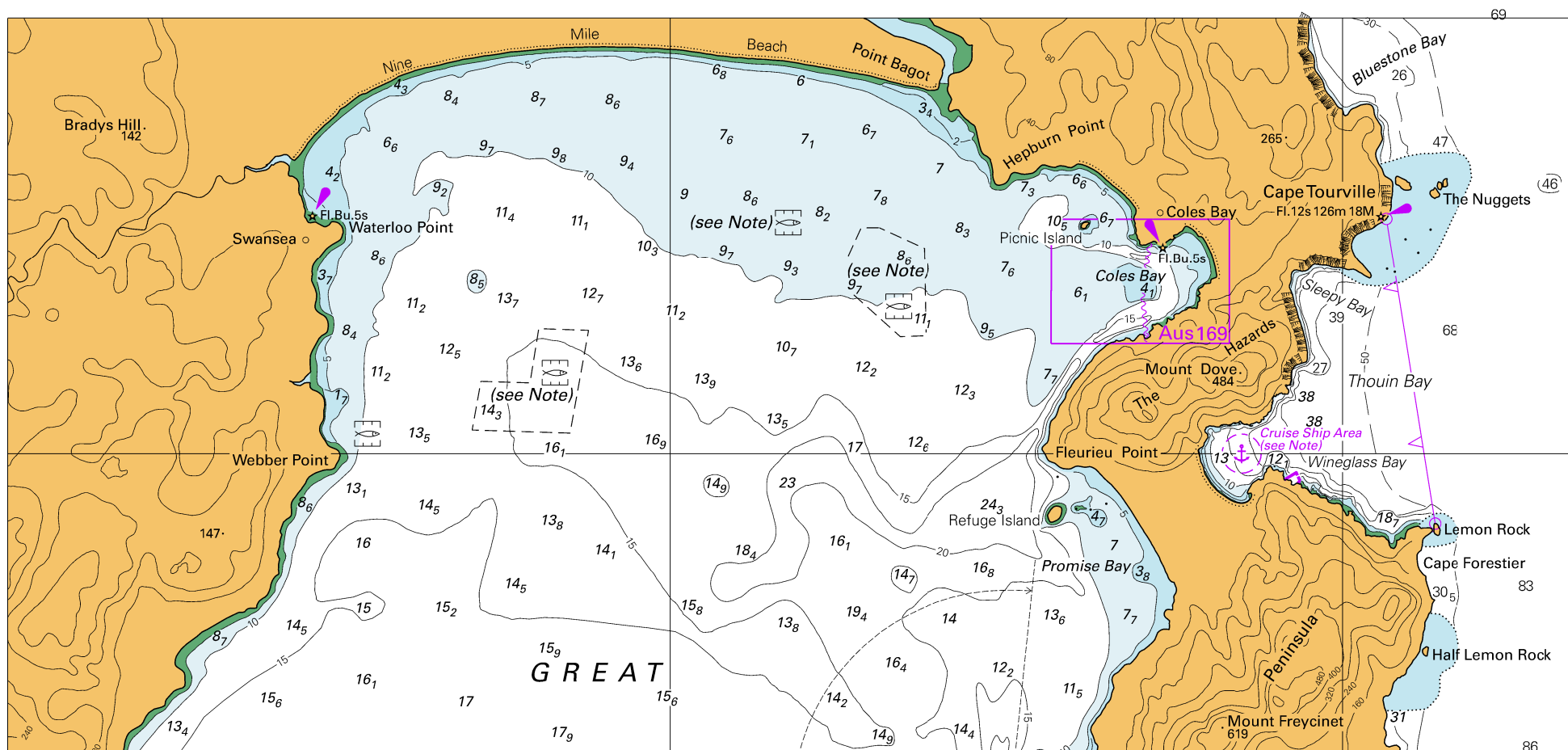


Block for chart Aus 800

© Commonwealth of Australia 2019

(225.5 x 101.7mm)

To accompany Australian Notice to Mariners 167/2019

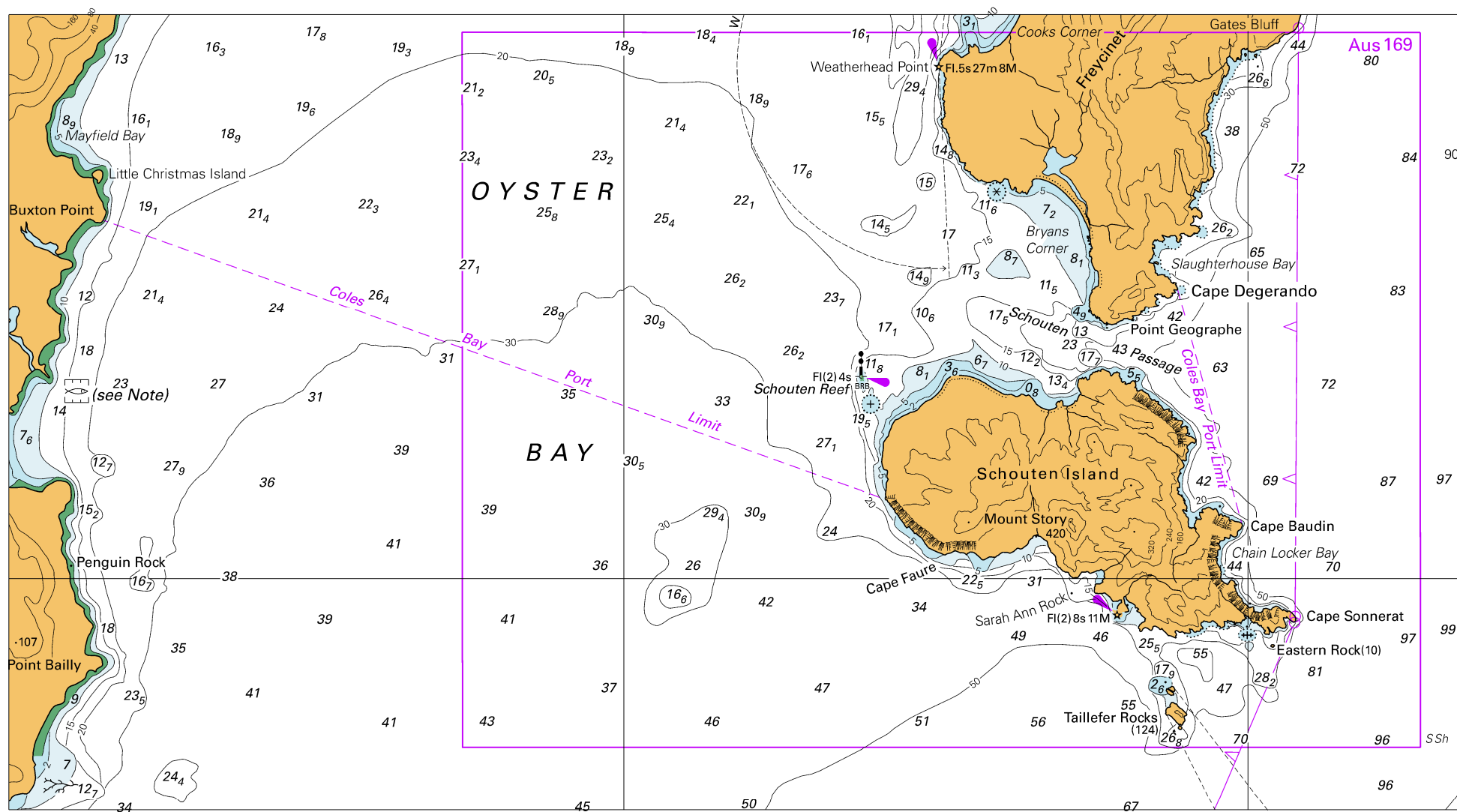


Block A for chart Aus 766

© Commonwealth of Australia 2019

(256.0 x 119.9mm)

To accompany Australian Notice to Mariners 167/2019

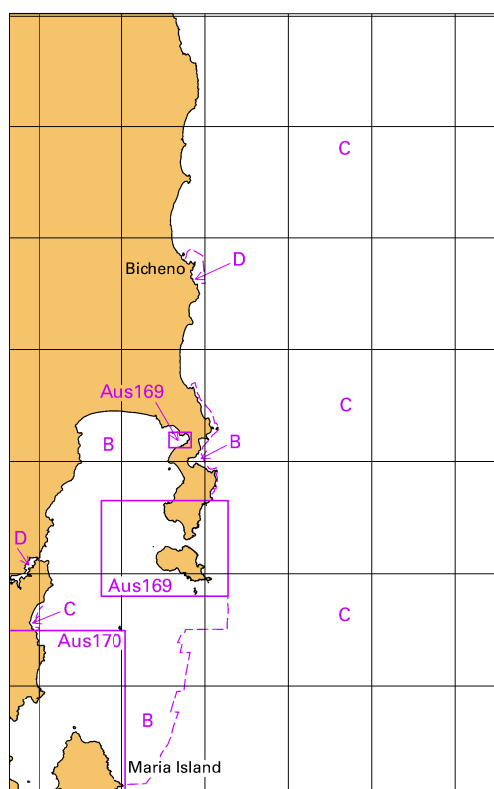


Block B for chart Aus 766

© Commonwealth of Australia 2019

(256.0 x 140.0mm)

To accompany Australian Notice to Mariners 167/2019



© Commonwealth of Australia 2019

Block C for chart Aus 766

(65.3 x 103.3mm)