



15 November 2019

Edition 23

AUSTRALIAN NOTICES TO MARINERS

Notices 1183 - 1235

Published fortnightly by the Australian Hydrographic Office



Australian Notices to Mariners are the authority for correcting charts and publications published by the Australian Hydrographic Office covering Australia, Papua New Guinea, Solomon Islands, Australian Antarctic Territory and Timor-Leste.

Commodore F.T. FREEMAN RAN
Hydrographer of Australia

SECTIONS.

- I. **Australian Notices to Mariners, including blocks and notes.**
- II. **Hydrographic Reports.**
- III. **Navigational Warnings.**

SUPPLEMENTS.

- I. **Tracings**
- II. **Cumulative List of Australian Notices to Mariners.**
- III. **Cumulative List of Temporary and Preliminary Australian Notices to Mariners.**
- IV. **Temporary and Preliminary Notices in force.**
- V. **Amendments to Admiralty List of Lights and Fog Signals (Vol K), Radio Signals (NP 281(2), 282, 283(2), 285, 286(4)) and Sailing Directions (NP 9, 13, 14, 15, 33, 34, 35, 36, 39, 44, 51, 60, 61, 62, 100, 136).**

© Commonwealth of Australia 2019

This work is copyright. Apart from any use permitted under the Copyright Act 1968, no part may be reproduced by any process, adapted, communicated or commercially exploited without prior written permission from The Commonwealth represented by the Australian Hydrographic Office.

IMPORTANT NOTICE

This edition of Notices to Mariners includes all significant information affecting AHO products which the AHO has become aware of since the last edition. All reasonable efforts have been made to ensure the accuracy and completeness of the information, including third party information, on which these updates are based. The AHO regards third parties from which it receives information as reliable, however the AHO cannot verify all such information and errors may therefore exist. The AHO does not accept liability for errors in third party information.

GENERAL INSTRUCTIONS

The substance of these notices should be inserted on the charts affected.

Bearings are referred to the true compass and are reckoned clockwise from North; those relating to lights are given as seen by an observer from seaward.

Positions quoted in notices relate to WGS84 which is the horizontal datum for all charts produced by the Australian Hydrographic Office.

The range quoted for a light is its nominal range.

Depths are with reference to the chart datum of each chart. Heights are above mean high water springs or mean higher high water, as appropriate.

The capital letter (P) or (T) after the number of any notice denotes a preliminary or temporary notice respectively, which are contained separately at the end of the permanent notices.

REPORTING OF DANGERS

Mariners are particularly requested to notify the AUSTRALIAN HYDROGRAPHIC OFFICE, Locked Bag 8801 Wollongong, NSW 2500 (Fax 02-4223 6599, e-mail datacentre@hydro.gov.au or, alternatively by filling in and submitting the [Hydrographic Notes](#) forms located on the web site – www.hydro.gov.au), immediately on the discovery of new dangers or suspected dangers to navigation. For changes or defects in aids to navigation notify AusSAR (Fax 02-6230 6868 or email rccaus@amsa.gov.au).

AUTHORISED USE

Copies of Australian notices are available free of charge from the Australian Hydrographic Office (AHO) website (www.hydro.gov.au) and through the eNotices (email) service (www.hydro.gov.au/enotices/enotices.htm).

Individual Notices may be copied for the purpose of inserting Notice substance on official charts and publications. Paper copies may be printed by chart agents and distributed to customers on a cost recovery basis. Participating chart agents are listed on the AHO website as providing a 'Paper Notices to Mariners' service (www.hydro.gov.au/webapps/jsp/agents/agents-list.jsp). Copies of the notices may not be sold for profit without prior written agreement.

NUMERICAL INDEX OF NOTICES TO MARINERS

Edition No 23

Notices	Aus Chart, INT Chart, ENC Cell, AHP, BA Pubs
1183	Products - New Charts, New Editions, Withdrawn Charts
1184	Aus 66, 67, 83, 280, 281, 326, 327, 645, 663, 665, 739, 740, 741, 751
1185	AusTides 2019
1186	Amendment to Australian National Tide Tables 2020
1187	Aus 200, 202
1188	Aus 202
1189	Aus 262, 263
1190	Aus 247, 265
1191	Aus 836
1192	Aus 816
1193	Aus 235, 815, 4635, 4643, INT 635, 643
1194	Aus 309, 310, 4721, INT 721
1195	Aus 25, 26, 28
1196	Aus 24
1197	Aus 309, 310
1198	Aus 50
1199	Aus 4722, INT 722
1200	Aus 110
1201	Aus 754
1202	Aus 64, 69, 743
1203	Aus 318, 727
1204	Aus 743, 744
1205	Aus 130, 137
1206	Aus 141, 788
1207	Aus 143, 788
1208	Aus 182
1209	Aus 157
1210	Aus 154
1211	Aus 143, 158, 788
1212	Aus 349
1213	Aus 169, 171
1214	Aus 169, 766
1215(T)	Aus 238
1216(T)	Aus 263, 264
1217(T)	Aus 236
1218(T)	Aus 236
1219(T)	Aus 256, 827
1220(T)	Aus 248, 260, 261, 367, 490, 820, 822
1221(P)	Aus 301
1222(T)	Aus 625, PNG 508
1223(T)	Aus 309, 315, 316, 318, 4721, INT 721
1224(T)	Aus 357, 487
1225(T)	Aus 69
1226(T)	Aus 55, 56
1227(T)	Aus 112, 754, 4725, 4726, INT 725, 726
1228(T)	Aus 328, 329, 742, 744
1229(T)	Aus 112
1230(P)	Aus 325, 326, 739
1231(T)	Aus 357
1232(T)	Aus 153
1233(T)	Aus 154
1234(T)	Aus 140
1235(T)	Aus 177

NUMERICAL INDEX OF CHARTS AFFECTED

Edition No 23

Aus Chart	Notices
Aus 24	1196
Aus 25	1195
Aus 26	1195
Aus 28	1195
Aus 50	1198
Aus 55	1226(T)
Aus 56	1226(T)
Aus 64	1202
Aus 66	1184
Aus 67	1184
Aus 69	1202, 1225(T)
Aus 83	1184
Aus 110	1200
Aus 112	1227(T), 1229(T)
Aus 130	1205
Aus 137	1205
Aus 140	1234(T)
Aus 141	1206
Aus 143	1207, 1211
Aus 153	1232(T)
Aus 154	1210, 1233(T)
Aus 157	1209
Aus 158	1211
Aus 169	1213, 1214
Aus 171	1213
Aus 177	1235(T)
Aus 182	1208
Aus 200	1187
Aus 202	1187, 1188
Aus 235	1193
Aus 236	1217(T), 1218(T)
Aus 238	1215(T)
Aus 247	1190
Aus 248	1220(T)
Aus 256	1219(T)
Aus 260	1220(T)
Aus 261	1220(T)
Aus 262	1189
Aus 263	1189, 1216(T)
Aus 264	1216(T)
Aus 265	1190
Aus 280	1184
Aus 281	1184
Aus 301	1221(P)
Aus 309	1194, 1197, 1223(T)
Aus 310	1194, 1197
Aus 315	1223(T)
Aus 316	1223(T)
Aus 318	1203, 1223(T)
Aus 325	1230(P)
Aus 326	1184, 1230(P)
Aus 327	1184
Aus 328	1228(T)
Aus 329	1228(T)

Aus Chart	Notices
Aus 349	1212
Aus 357	1224(T), 1231(T)
Aus 367	1220(T)
Aus 487	1224(T)
Aus 490	1220(T)
Aus 625	1222(T)
Aus 645	1184
Aus 663	1184
Aus 665	1184
Aus 727	1203
Aus 739	1184, 1230(P)
Aus 740	1184
Aus 741	1184
Aus 742	1228(T)
Aus 743	1202, 1204
Aus 744	1204, 1228(T)
Aus 751	1184
Aus 754	1201, 1227(T)
Aus 766	1214
Aus 788	1206, 1207, 1211
Aus 815	1193
Aus 816	1192
Aus 820	1220(T)
Aus 822	1220(T)
Aus 827	1219(T)
Aus 836	1191
Aus 4635	1193
Aus 4643	1193
Aus 4721	1194, 1223(T)
Aus 4722	1199
Aus 4725	1227(T)
Aus 4726	1227(T)
PNG 508	1222(T)

INT Chart	Notices
INT 635	1193
INT 643	1193
INT 721	1194, 1223(T)
INT 722	1199
INT 725	1227(T)
INT 726	1227(T)

1183 AUSTRALIA - Products - New Charts, New Editions, Withdrawn Charts
 Australian Hydrographic Office

New Charts

<i>Chart</i>	<i>Title and Geographical limits</i>	<i>Scale</i>	<i>Publication Date</i>	<i>Remarks</i>
NIL				

New Electronic Navigation Chart (Aus ENC)

<i>Cell Name</i>	<i>Title</i>	<i>Publication Date</i>	<i>Remarks</i>
NIL			

New Editions and Withdrawn Charts

<i>Chart</i>	<i>Title</i>	<i>Scale</i>	<i>Publication Date</i>	<i>Remarks</i>
NIL				

AusTides 2020

<i>AHP No</i>	<i>Title</i>	<i>Recommended retail price (incl GST)</i>	<i>Remarks</i>
AHP 114	AusTides 2020	\$59.95	AusTides 2020 for Australia, Antarctica, Papua New Guinea, Solomon Islands and Timor-Leste. Provides tidal data for 2019 and 2020.

Chart permanently withdrawn

Charts listed above as withdrawn no longer meet chart carriage requirements and should be marked as "superseded" and replaced with the new chart/ new edition listed prior to passage through the area covered by the new chart.

When placing orders with a chart agent between notice of forthcoming edition and its publication, mariners should advise whether their order pertains to the current edition or the new edition.

For further details refer to the AHO website at www.hydro.gov.au for new edition and new chart stock arrival information.

1184 AUSTRALIA - Products - New Charts and New Editions to be published shortly

Australian Hydrographic Office

New Charts to be published shortly

<i>Chart</i>	<i>Title</i>	<i>Scale</i>	<i>Expected Publication Date</i>	<i>Remarks</i>
PNG 645	Papua New Guinea - North Coast - Approaches to Port of Basamuk Plan: Port of Basamuk	1:37 500 1:5 000	29 November 2019	Adoption of Papua New Guinea chart numbering. Replaces Aus 645. General updating throughout.
PNG 663	Papua New Guinea - South Pacific Ocean - Hermit Islands	1:50 000	29 November 2019	Adoption of Papua New Guinea chart numbering. Replaces Aus 663. General updating throughout.
PNG 665	Papua New Guinea - New Britain - North Coast - Approaches to Eleonora Bay	1:25 000	29 November 2019	Adoption of Papua New Guinea chart numbering. Replaces Aus 665. General updating throughout.

New Editions to be published shortly

<i>Chart</i>	<i>Title</i>	<i>Scale</i>	<i>Expected Publication Date</i>	<i>Remarks</i>
Aus 83	Australia - West Coast - Plans in Western Australia (Sheet 5) Plan: Recruit Bay Easter Group	1:25 000 1:25 000	29 November 2019	New edition with general updating throughout; including latest bathymetric data.
Aus 326	Australia - North West Coast - Western Australia - Bedout Islet to Port Walcott Plan: Depuch Island Anchorage	1:300 000 1:40 000	29 November 2019	New edition with general updating throughout for withdrawal of larger scale charts.
Aus 327	Australia - North West Coast - Western Australia - Port Walcott to Montebello Islands	1:300 000	29 November 2019	New edition with general updating throughout for withdrawal of larger scale charts.

Charts to be withdrawn

<i>Chart</i>	<i>Remarks</i>
Aus 645	On publication of new chart PNG 645
Aus 663	On publication of new chart PNG 663
Aus 665	On publication of new chart PNG 665

Charts to be withdrawn without replacement 29 November 2019

<i>Chart</i>	<i>Title</i>	<i>Scale</i>	<i>Publication Date</i>
Aus 739 Edition 3	Australia - North West Coast - Western Australia - Bedout Islet to Port Hedland	1:150 000	15 January 2010
Aus 740 Edition 3	Australia - North West Coast - Western Australia - Port Hedland to Port Walcott Inset: Depuch Island Anchorage	1:150 000 1:20 000	15 January 2010
Aus 741 Edition 3	Australia - North West Coast - Western Australia - Approaches to Dampier Archipelago	1:150 000	6 November 2015
Aus 751 Edition 2	Australia - West Coast - Western Australia - Houtman Abrolhos and Geelvink Channel	1:150 000	29 June 2012

Charts withdrawn without replacement 13 December 2019

<i>Chart</i>	<i>Title</i>	<i>Scale</i>	<i>Publication Date</i>
Aus 66	Australia - North West Coast - Western Australia -	1:10 000	30 January 2015

1184 AUSTRALIA - Products - New Charts and New Editions to be published shortly**Edition 2** Barrow Island - Town Point

Aus 67 Australia - North West Coast - Western Australia - 1:7 500 2 November 2012

Edition 1 Barrow Island - Wapet Landing**Charts withdrawn without replacement 24 January 2020**

<i>Chart</i>	<i>Title</i>	<i>Scale</i>	<i>Publication Date</i>
Aus 280	Australia - East Coast - Queensland - Plans in		22 February 2019
Edition 5	Queensland (Sheet 3)		
	Plans:		
	Magpie Reef to Eden Reef	1:75 000	
	Flinders Group	1:50 000	
Aus 281	Australia - East Coast - Queensland - First Three	1:75 000	22 February 2019
Edition 3	Mile Opening to Cape Direction		

1185 AUSTRALIA - Product - AusTides 2019

Australian Hydrographic Service

Follow the link below to update Electronic Tides Tables (AusTides 2019) for Australia, Antarctica, Papua New Guinea, Solomon Islands and Timor-Leste

<http://www.hydro.gov.au/prodserv/publications/ausTides/tides-patches.htm>

1186 AUSTRALIA - Product - Amendment to Australian National Tide Tables 2020
 Australian Hydrographic Office

ANTT 2020

Page 339

Amend PENNEFATHER RIVER To Chart Datum 0.0 to UNK
 CULLEN POINT To Chart Datum 0.5 to UNK

Page 346

Amend WILSON HEAD To Chart Datum 0.0 to UNK
 NORNALUP INLET To Chart Datum 0.0 to UNK
 WINDY HARBOUR To Chart Datum 0.0 to UNK
 CAPE HAMELIN To Chart Datum 0.0 to UNK
 COWARAMUP To Chart Datum 0.0 to UNK

Page 362

Delete ANEWA BAY To Chart Datum AUS 683 NE 26 AUG 2016 SUBTRACT 0.2
Insert ANEWA BAY To Chart Datum PNG 683 NC 06 SEP 2019 SUBTRACT 0.2
Amend AMRUN To Chart Datum AUS 301 NE 18 OCT 2019 UNK

Page 363

Delete BUNDABERG To Chart Datum AUS 243 NE 06 JAN 2006 0.0

Page 364

Amend DAMPIER To Chart Datum AUS 57 NE 26 JUL 2019 0.0

Page 365

Amend GERALDTON To Chart Datum AUS 81 NE 04 OCT 2019 0.0

Page 369

Delete RABAU To Chart Datum AUS 680 NC 10 JAN 1997 SUBTRACT 0.2
Insert RABAU To Chart Datum PNG 680 NC 06 SEP 2019 SUBTRACT 0.2

Page 371

Delete WEIPA To Chart Datum AUS 701 NE 13 FEB 2009 0.0
Amend WEIPA To Chart Datum AUS 301 NE 18 OCT 2019 UNK

1186 AUSTRALIA - Product - Amendment to Australian National Tide Tables 2020

Page 372

Amend YAMBA To Chart Datum AUS 222 NE 23 AUG 2019 0.0

1187 AUSTRALIA - NEW SOUTH WALES - Port Jackson - Sydney Harbour - Nav aids

Port Authority of New South Wales

Aus 200 [1133/2019]

Replace	lit pile with starboard lateral light beacon, <i>Fl.G.3s</i> , without topmark	33° 50'.54 S	151° 13'.10 E
---------	--	--------------	---------------

Aus 202 [1132/2019]

Replace	lit pile with starboard lateral light beacon, <i>Fl.G.3s</i> , without topmark	33° 50'.54 S	151° 13'.10 E
---------	--	--------------	---------------

Amend	light elevation to <i>18m</i>	33° 51'.29 S	151° 13'.55 E
-------	-------------------------------	--------------	---------------

Delete	light elevation, 3m	33° 51'.17 S	151° 13'.13 E
	beacon	33° 51'.92 S	151° 13'.24 E
	structure colour, B	33° 52'.06 S	151° 13'.67 E

1188 AUSTRALIA - NEW SOUTH WALES - Port Jackson - Longnose Point to Manns Point - Infrastructure; nav aids

Port Authority of New South Wales

Aus 202 [1187/2019]

Insert	accompanying block	33° 50'.4 S	151° 11'.2 E
--------	--------------------	-------------	--------------

1189 AUSTRALIA - QUEENSLAND - Cairns - Depths

Ports North

Aus 262 [930/2019]

Insert	contour, between	16° 54'.754 S	145° 47'.049 E
		16° 54'.913 S	145° 47'.025 E
		16° 55'.012 S	145° 47'.010 E
		16° 55'.023 S	145° 46'.988 E

Delete	contour, between	16° 54'.75 S	145° 47'.05 E
		16° 55'.02 S	145° 46'.97 E

Aus 263 [930/2019]

Insert	contour, between	16° 54'.976 S	145° 47'.014 E	
		16° 55'.012 S	145° 47'.010 E	
		16° 55'.023 S	145° 46'.988 E	
		16° 55'.144 S	145° 46'.974 E	
		16° 55'.185 S	145° 46'.975 E	
		16° 55'.239 S	145° 46'.963 E	
	depth, <i>4₈m</i>	16° 55'.285 S	145° 46'.941 E	
		depth, <i>4₂m</i>	16° 55'.006 S	145° 47'.002 E
			16° 55'.213 S	145° 46'.966 E

Delete	contour, between	16° 54'.98 S	145° 47'.01 E
		16° 55'.02 S	145° 46'.97 E
	depth, <i>6₉m</i>	16° 55'.18 S	145° 46'.97 E
		depth, <i>6₇m</i>	16° 55'.24 S

1190 AUSTRALIA - QUEENSLAND - Curtis Island - Beacons

Maritime Safety Queensland

Aus 247 [814/2019]

Insert	triangular daymark, apex down	23° 29'.91 S	150° 59'.30 E
--------	-------------------------------	--------------	---------------

Aus 265 [866/2019]

Insert	triangular daymark, apex up	23° 29'.904 S	150° 59'.274 E
	triangular daymark, apex down	23° 29'.905 S	150° 59'.304 E

1191 AUSTRALIA - QUEENSLAND - Great Barrier Reef - Mantis Reef - Depths

LADS Flight

Aus 836 [580/2019]

Insert	accompanying block	12° 15'.0 S	143° 48'.3 E
--------	--------------------	-------------	--------------

1192 AUSTRALIA - QUEENSLAND - North Gardner Bank - Wrecks*Former Notice - 467(T)/2016 is cancelled*

Maritime Safety Queensland

Aus 816 [54/2019]

Insert	safe clearance depth, 20m, enclosed by danger circle with legend, Wk	24° 55'.33 S	153° 25'.54 E
--------	--	--------------	---------------

1193 AUSTRALIA - QUEENSLAND - Point Cartwright - Wreck northeastwards

Australian Maritime Safety Authority Auscoast Warning 316/2019

Aus 235 [1038/2019]

Insert	safe clearance depth, 30m, enclosed by danger circle with legend, Wk	26° 38'.71 S	153° 24'.72 E
--------	--	--------------	---------------

Aus 815 [1038/2019]

Insert	safe clearance depth, 30m, enclosed by danger circle with legend, Wk	26° 38'.71 S	153° 24'.72 E
--------	--	--------------	---------------

Aus 4635 (INT 635) [1082/2019]

Insert	safe clearance depth, 30m, enclosed by danger circle with legend, Wk	26° 38'.7 S	153° 24'.7 E
--------	--	-------------	--------------

Delete	depth, 57m	26° 39'.8 S	153° 26'.5 E
--------	------------	-------------	--------------

Aus 4643 (INT 643) [466/2019]

Insert	safe clearance depth, 30m, enclosed by danger circle with legend, Wk	26° 38'.7 S	153° 24'.7 E
--------	--	-------------	--------------

Delete	depth, 50m	26° 39'.9 S	153° 24'.0 E
--------	------------	-------------	--------------

1194 AUSTRALIA - NORTHERN TERRITORY - Bathurst Island - Depths westwards

Geoscience Australia

Aus 309 [874/2019]

Insert	depth, 44m, enclosed by contour	11° 00'.56 S	129° 44'.84 E
	depth, 48m, enclosed by contour	11° 21'.15 S	129° 48'.12 E
	depth, 19 ₉ m, enclosed by contour	11° 35'.53 S	129° 47'.21 E
	depth, 19m, enclosed by contour	11° 37'.21 S	129° 46'.82 E
	depth, 28 ₇ m, enclosed by contour	11° 40'.44 S	129° 47'.58 E

Replace	depth, 18 ₁ m, with depth, 13 ₆ m	11° 05'.4 S	129° 44'.9 E
	depth, 20 ₂ m, with depth, 14 ₉ m	11° 19'.3 S	129° 47'.5 E
	depth, 16 ₃ m, with depth, 10 ₇ m	11° 38'.6 S	129° 46'.4 E
	depth, 44m, with depth, 29 ₅ m, enclosed by contour	11° 42'.0 S	129° 46'.8 E

Delete	depth, 75m	11° 20'.7 S	129° 47'.8 E
--------	------------	-------------	--------------

Aus 310 [874/2019]

Insert	depth, 44m, enclosed by contour	11° 00'.56 S	129° 44'.84 E
--------	---------------------------------	--------------	---------------

Replace	depth, 18 ₁ m, with depth, 13 ₆ m	11° 05'.4 S	129° 44'.9 E
---------	---	-------------	--------------

Aus 4721 (INT 721) [874/2019]

Replace	depth, 18 ₁ m, with depth, 13 ₆ m	11° 05'.4 S	129° 44'.9 E
	depth, 20 ₂ m, with depth, 14 ₉ m	11° 19'.3 S	129° 47'.5 E
	depth, 16 ₃ m, with depth, 10 ₇ m	11° 38'.6 S	129° 46'.4 E

1195 AUSTRALIA - NORTHERN TERRITORY - Darwin - East Arm - Light withdrawn

Department of Infrastructure, Planning and Logistics NT Notice 72(T)/2019

Aus 25 [775/2019]

Delete light 12° 29'.2 S 130° 52'.6 E

Aus 26 [474/2019]

Delete light 12° 29'.2 S 130° 52'.6 E

Aus 28 [873/2019]

Delete light 12° 29'.2 S 130° 52'.6 E

1196 AUSTRALIA - NORTHERN TERRITORY - Darwin - Cullen Bay - Beacon

Department of Infrastructure, Planning and Logistics NT Notice 76/2019

Aus 24 [873/2019]

Delete beacon 12° 27'.05 S 130° 48'.90 E

1197 AUSTRALIA - NORTHERN TERRITORY - Melville Island - Depths northwestwards

Geoscience Australia

Aus 309 [1194/2019]

Insert accompanying block 10° 41'.0 S 129° 30'.0 E

Aus 310 [1194/2019]

Insert accompanying block 10° 30'.0 S 129° 30'.0 E

1198 AUSTRALIA - WESTERN AUSTRALIA - Broome - Depths; nav aids

Precision Hydrographic Services

Aus 50 [1145/2019]

Insert accompanying block 18° 00'.5 S 122° 13'.7 E

1199 AUSTRALIA - WESTERN AUSTRALIA - Cape Leveque - Depths northwestwards

Geoscience Australia

Aus 4722 (INT 722) [874/2019]

Insert depth, 50m 15° 50'.1 S 121° 03'.9 E

Delete depth, 55m 15° 49'.3 S 121° 05'.1 E

1200 AUSTRALIA - WESTERN AUSTRALIA - Isthmus Bay - Depths

LADS Flight

Aus 110 [650/2019]Insert accompanying block A 35° 07'.3 S 117° 57'.0 E
accompanying block B 35° 07'.3 S 117° 59'.9 E**1201 AUSTRALIA - WESTERN AUSTRALIA - Ledge Point to Cape Leschenault - Lights**

Australian Hydrographic Office

Aus 754 [268/2019]

Amend light range to 10M 31° 06'.8 S 115° 22'.8 E

1202 AUSTRALIA - WESTERN AUSTRALIA - Onslow - Mooring buoy

Department of Transport WA

Aus 64 [1147/2019]

Replace	mooring buoy with yellow conical mooring buoy	21° 37'.0 S	115° 07'.0 E
---------	---	-------------	--------------

Aus 69 (Onslow) [1147/2019]

Replace	mooring buoy with yellow conical mooring buoy	21° 37'.04 S	115° 06'.98 E
---------	---	--------------	---------------

Aus 743 [1088/2019]

Replace	mooring buoy with yellow conical mooring buoy	21° 37'.0 S	115° 07'.0 E
---------	---	-------------	--------------

1203 AUSTRALIA - WESTERN AUSTRALIA - Sir Graham Moore Islands - Depth

Australian Hydrographic Office

Aus 318 [859/2018]

Insert	depth, 1 ₂ m, enclosed by contour	13° 50'.25 S	126° 38'.18 E
--------	--	--------------	---------------

Aus 727 [387/2016]

Insert	depth, 1 ₂ m, enclosed by contour	13° 50'.25 S	126° 38'.18 E
--------	--	--------------	---------------

1204 AUSTRALIA - WESTERN AUSTRALIA - Thevenard Island - Light buoy withdrawn

Department of Transport WA

Aus 743 [1202/2019]

Delete	light buoy	21° 24'.6 S	114° 56'.4 E
--------	------------	-------------	--------------

Aus 744 [430/2019]

Delete	light buoy	21° 24'.6 S	114° 56'.4 E
--------	------------	-------------	--------------

1205 AUSTRALIA - SOUTH AUSTRALIA - Port Adelaide - Overhead power cables

Hydro Survey

Aus 130 [705/2019]

Amend	safe vertical clearance to 55m	34° 46'.87 S	138° 30'.95 E
	safe vertical clearance to 47m	34° 48'.23 S	138° 30'.77 E
	safe vertical clearance to 50m	34° 49'.49 S	138° 30'.55 E

Aus 137 [1092/2019]

Amend	safe vertical clearance to 55m	34° 46'.90 S	138° 30'.96 E
	safe vertical clearance to 47m	34° 48'.25 S	138° 30'.80 E
	safe vertical clearance to 50m	34° 49'.47 S	138° 30'.61 E

1206 AUSTRALIA - VICTORIA - Apollo Bay - Light buoy

Maritime Safety Victoria Notice 275(T)/2019

Aus 141 (Apollo Bay) [829/2019]

Insert	special conical light buoy, Fl.Y.2·5s, without topmark	38° 45'.250 S	143° 43'.392 E
--------	--	---------------	----------------

Aus 788 [944/2019]

Insert	special conical light buoy, Fl.Y.2·5s, without topmark	38° 45'.25 S	143° 43'.39 E
--------	--	--------------	---------------

1207 AUSTRALIA - VICTORIA - Lorne to Torquay - Fish aggregating devices
Victorian Fisheries Authority

Aus 143 [945/2019]

Insert	out of position special conical light buoy, <i>Fl.Y.5s (Dec-Apr)</i> , with topmark	38° 20'.08 S	144° 22'.35 E
--------	---	--------------	---------------

Aus 788 [1206/2019]

Insert	out of position special conical light buoy, <i>Fl.Y.5s (Dec-Apr)</i> , with topmark	38° 20'.08 S	144° 22'.35 E
	special conical light buoy, <i>Fl.Y.5s (Dec-Apr)</i> , with topmark	38° 29'.14 S	144° 09'.73 E
	out of position special conical light buoy, <i>Fl.Y.5s (Dec-Apr)</i> , with topmark	38° 32'.26 S	144° 01'.94 E

1208 AUSTRALIA - VICTORIA - Port Albert - Light beacons
Gippsland Ports Notice 268/2019

Aus 182 (Approaches to Port Albert) [782/2019]

Replace	beacon with port lateral light beacon, <i>Q.R No20</i> , with topmark	38° 40'.58 S	146° 41'.93 E
	beacon with port lateral light beacon, <i>Fl.R.4s No14</i> , with topmark	38° 40'.98 S	146° 41'.57 E
	beacon with port lateral light beacon, <i>Fl.R.2s No12</i> , with topmark	38° 41'.17 S	146° 41'.51 E
	beacon with starboard lateral light beacon, <i>Fl.G.2s No5</i> , with topmark	38° 41'.80 S	146° 40'.79 E

Aus 182 (Port Albert) [782/2019]

Replace	beacon with port lateral light beacon, <i>Q.R No20</i> , with topmark	38° 40'.58 S	146° 41'.93 E
	beacon with port lateral light beacon, <i>Fl.R.2s No16</i> , with topmark	38° 40'.89 S	146° 41'.60 E
	beacon with port lateral light beacon, <i>Fl.R.4s No14</i> , with topmark	38° 40'.98 S	146° 41'.57 E

1209 AUSTRALIA - VICTORIA - Port Phillip - Prince George Bank - Light beacons
Parks Victoria Notice 258/2019

Aus 157 [1149/2019]

Replace	beacon with north cardinal light beacon, <i>Q</i> , with topmark	38° 06'.60 S	144° 42'.69 E
	beacon with south cardinal light beacon, <i>Q(6)+LFl.15s</i> , with topmark	38° 06'.75 S	144° 42'.74 E
	beacon with north cardinal light beacon, <i>Q</i> , with topmark	38° 07'.34 S	144° 42'.70 E
	beacon with east cardinal light beacon, <i>Q(3)10s</i> , with topmark	38° 07'.64 S	144° 43'.00 E

1210 AUSTRALIA - VICTORIA - Port Phillip - Warmies Channel - Light beacon
Parks Victoria Notice 260/2019

Aus 154 [946/2019]

Replace	beacon with starboard lateral light beacon, <i>VQ.G No3</i> , with topmark	37° 51'.06 S	144° 54'.27 E
---------	--	--------------	---------------

1211 AUSTRALIA - VICTORIA - Port Phillip - Entrance Channel - Light buoy; AIS
Victorian Ports Corporation (Melbourne)

Aus 143 [1207/2019]

Replace	light buoy with special conical light buoy, <i>Fl(5)Y.20s</i> , without topmark	38° 21'.6 S	144° 41'.2 E
---------	---	-------------	--------------

Delete	magenta circle with legend, AIS	38° 21'.6 S	144° 41'.2 E
--------	---------------------------------	-------------	--------------

Aus 158 [1149/2019]

Replace	light buoy with special conical light buoy, <i>Fl(5)Y.20s</i> , without topmark	38° 21'.60 S	144° 41'.24 E
---------	---	--------------	---------------

Delete	magenta circle with legend, AIS	38° 21'.60 S	144° 41'.24 E
--------	---------------------------------	--------------	---------------

Aus 788 [1207/2019]

Replace	light buoy with special conical light buoy, <i>Fl(5)Y.20s</i> , without topmark	38° 21'.6 S	144° 41'.2 E
---------	---	-------------	--------------

Delete	magenta circle with legend, AIS	38° 21'.6 S	144° 41'.2 E
--------	---------------------------------	-------------	--------------

1212 AUSTRALIA - VICTORIA - Port Phillip - Entrance Channel - Wrecks
 Australian Hydrographic Office

Aus 349 [943/2019]

Insert	accompanying block	38° 21'.0 S	144° 27'.0 E
--------	--------------------	-------------	--------------

1213 AUSTRALIA - TASMANIA - Blackman Bay - Nav aids
 Marine and Safety Tasmania Notice M180/2019

Aus 169 (Blackman Bay) [481/2019]

Replace	light beacon with starboard lateral beacon, <i>No7</i> , with topmark	42° 50'.77 S	147° 52'.74 E
	buoy with port lateral pillar light buoy, <i>Q.R No4</i> , with topmark	42° 50'.82 S	147° 52'.75 E
	buoy with port lateral beacon, with topmark	42° 51'.61 S	147° 52'.23 E
	buoy with starboard lateral beacon, with topmark	42° 53'.95 S	147° 47'.90 E

Delete	buoy	42° 53'.84 S	147° 47'.97 E
--------	------	--------------	---------------

Aus 171 [23/2019]

Replace	buoy with port lateral beacon, with topmark	42° 51'.6 S	147° 52'.2 E
	buoy with starboard lateral beacon, with topmark	42° 53'.9 S	147° 47'.9 E

Delete	buoy	42° 53'.8 S	147° 48'.0 E
--------	------	-------------	--------------

1214 AUSTRALIA - TASMANIA - Freycinet Peninsula - Weatherhead Point - Light
 Marine and Safety Tasmania

Aus 169 (Schouten Passage) [1213/2019]

Delete	light elevation, 27m	42° 13'.9 S	148° 15'.1 E
--------	----------------------	-------------	--------------

Aus 766 [167/2019]

Delete	light elevation, 27m	42° 13'.9 S	148° 15'.1 E
--------	----------------------	-------------	--------------

1215(T)/2019 AUSTRALIA - QUEENSLAND - Brisbane River - Humbug Reach - Harbour works

Maritime Safety Queensland Notice 469(T)/2019

Works associated with repairs of the sea wall are in progress along the north shore in the vicinity of position 27° 28'.48 S 153° 02'.89 E.

Mariners are advised to navigate with in the area.

Chart temporarily affected - Aus 238

1216(T)/2019 AUSTRALIA - QUEENSLAND - Cairns - Dredging operations

Maritime Safety Queensland

Dredging operations are in progress at the naval base (16° 56'.20 S 145° 46'.73 E).

Barges and support vessels are on site and may deploy anchors which may be marked by buoys or lights.

Mariners are advised to navigate with caution in the area.

Chart temporarily affected - Aus 263 - Aus 264

1217(T)/2019 AUSTRALIA - QUEENSLAND - Moreton Bay - Green Island to Peel Island - Navaid replacement works

Maritime Safety Queensland Notice 471(T)/2019

Barges *Todkills Barge*, *Pangala* and *Gosford* and support vessel *Carl James* are conducting works to replace light beacons in Moreton Bay.

The new beacon structures will be temporarily marked by lights as follows:

<i>Position</i>	<i>Temporary light</i>
27° 26'.43 S 153° 14'.51 E	Fl. Y. 2.5s
27° 27'.07 S 153° 19'.62 E	Fl. Y. 6s
27° 27'.08 S 153° 13'.74 E	Fl. Y. 4s
27° 27'.62 S 153° 20'.48 E	Fl. Y. 4s
27° 28'.18 S 153° 22'.03 E	Fl. Y. 6s
27° 29'.15 S 153° 22'.49 E	Fl. Y. 2.5s
27° 29'.57 S 153° 22'.88 E	Fl. Y. 4s
27° 29'.75 S 153° 22'.73 E	Fl. Y. 6s

The vessels will display appropriate lights and shapes and will monitor VHF Ch 13 and Ch 16.

Mariners are advised to navigate with caution in the area.

Chart temporarily affected - Aus 236

1218(T)/2019 AUSTRALIA - QUEENSLAND - Moreton Bay - Bramble Bay - Light buoys recovered

Former Notice - 835(T)/2019 is cancelled

Maritime Safety Queensland

Cancel this notice on receipt.

Chart formerly affected - Aus 236

1219(T)/2019 AUSTRALIA - QUEENSLAND - Rattlesnake Island - Military exercises; live firing

Maritime Safety Queensland 475(T)/2019, 476(T)/2019, 486(T)/2019

Military exercises and live firing will be conducted within a 5M radius of position 19° 02'.27 S 146° 36'.43 E on 17 November, 18 November and 25 November 2019.

Mariners are advised to navigate with caution and keep well clear of the area.

Chart temporarily affected - Aus 256 - Aus 827

1220(T)/2019 AUSTRALIA - QUEENSLAND - Shoalwater Bay - Live firing completed*Former Notice - 1015(T)/2019 is cancelled*

Maritime Safety Queensland Notice 371(T)/2019

Cancel this notice on receipt.

Chart formerly affected - Aus 248 - Aus 260 - Aus 261 - Aus 367 - Aus 490 - Aus 820 - Aus 822**1221(P)/2019 AUSTRALIA - QUEENSLAND - Skardon River - Shoaling**

Precision Hydrographic Services

Latest survey shows shoaler depths than those charted may exist in Skardon River (11° 46'.27 S 141° 57'.94 E).

Mariners are advised to navigate with caution in the area.

Chart will be updated in due course.

Chart which will be affected - Aus 301**1222(T)/2019 PAPUA NEW GUINEA - Isulailai Point - Light beacon relit***Former Notice - 558(T)/2019 is cancelled*

National Maritime Safety Authority PNG Warning 40/2019

Cancel this notice on receipt.

Chart formerly affected - Aus 625 - PNG 508**1223(T)/2019 AUSTRALIA - NORTHERN TERRITORY - Joseph Bonaparte Gulf - Seismic survey northwards**

Department of Defence

On or about 18 November 2019, MV *Polarcus Asima*, with a 9300m towed array, and support vessels will be conducting a seismic survey in an area bounded by the following positions:

12° 49'.64 S 127° 59'.38 E

13° 28'.43 S 128° 44'.47 E

13° 00'.70 S 129° 09'.84 E

12° 31'.60 S 128° 36'.68 E

12° 31'.81 S 128° 16'.53 E.

Mariners are advised to navigate with caution in the area.

Chart temporarily affected - Aus 309 - Aus 315 - Aus 316 - Aus 318 - Aus 4721 (INT 721)**1224(T)/2019 AUSTRALIA - WESTERN AUSTRALIA - Ninety Mile Beach - Survey operations**

Esso Australia Pty Ltd

Vessel *MV Ocean Dynasty* is conducting a geophysical survey in the vicinity of positions 38° 19'.07 S 147° 36'.95 E and 38° 14'.40 S 147° 52'.42 E.

Mariners are advised to navigate with caution in the area.

Chart temporarily affected - Aus 357 - Aus 487**1225(T)/2019 AUSTRALIA - WESTERN AUSTRALIA - Onslow - Beadon Creek - Dredging operations completed***Former Notice - 842(T)/2018 is cancelled*

Department of Transport WA

Cancel this notice on receipt.

Chart formerly affected - Aus 69

1226(T)/2019 AUSTRALIA - WESTERN AUSTRALIA - Port Walcott - Scientific instruments recovered

Former Notice - 845(T)/2019 is cancelled
Department of Transport WA

Cancel this notice on receipt.

Chart formerly affected - Aus 55 - Aus 56

1227(T)/2019 AUSTRALIA - WESTERN AUSTRALIA - Rottnest Island - Military exercise completed

Former Notice - 1120(T)/2019 is cancelled
Department of Defence

Cancel this notice on receipt.

Chart formerly affected - Aus 112 - Aus 754 - Aus 4725 (INT 725) - Aus 4726 (INT 726)

1228(T)/2019 AUSTRALIA - WESTERN AUSTRALIA - Thevenard Island - Subsea operations northwestwards completed

Former Notice - 1121(T)/2019 is cancelled
Santos

Cancel this notice on receipt.

Chart formerly affected - Aus 328 - Aus 329 - Aus 742 - Aus 744

1229(T)/2019 AUSTRALIA - WESTERN AUSTRALIA - Trigg Island - Scientific instruments westwards recovered

Former Notice - 1074(T)/2019 is cancelled
RPS Group

Cancel this notice on receipt.

Chart formerly affected - Aus 112

1230(P)/2019 AUSTRALIA - WESTERN AUSTRALIA - Turtle Islands - Uncharted rocks

Volunteer Marine Rescue Service Port Hedland

Uncharted rocks have been reported in positions 19° 53'.48 S 118° 58'.45 E and 20° 01'.94 S 118° 49'.63 E.

Mariners are advised to navigate with caution in the area.

Charts will updated in due course.

Chart which will be affected - Aus 325 - Aus 326 - Aus 739

1231(T)/2019 AUSTRALIA - VICTORIA - Golden Beach - Scientific instrument

Former Notice - 571(T)/2019 is cancelled
Maritime Safety Victoria Notice 273(T)/2019

An orange conical light buoy, *Fl.4s*, exists in position 38° 15'.37 S 147° 25'.35 E.

Mariners are advised to navigate with caution in the area.

Chart temporarily affected - Aus 357

1232(T)/2019 AUSTRALIA - VICTORIA - Port Phillip - Geelong - Harbour works

Parks Victoria Notice 278(T)/2019

Works associated with the construction of a floating wave attenuation structure are in progress in the vicinity of position 38° 08'.54 S 144° 21'.99 E.

Barges and support vessels are on site.

Piles exist in the area and will be marked until the floating wave attenuation structure is installed.

Mariners are advised to navigate with caution in the area.

Chart temporarily affected - Aus 153

1233(T)/2019 AUSTRALIA - VICTORIA - Port Phillip - Yarra River - Swanson Dock - Harbour works

Former Notice - 362(T)/2019 is cancelled

Victorian Ports Corporation (Melbourne) Notice 76(T)/2019, 79(T)/2019, 281(T)/2019

Harbour works are in progress at Swanson Dock 3E (37° 48'.76 S 144° 54'.87 E) and 2E (37° 48'.89 S 144° 54'.87 E).

Mariners are advised to navigate with caution in the area.

Chart temporarily affected - Aus 154

1234(T)/2019 AUSTRALIA - VICTORIA - Portland Harbour - Dredging operations

Port of Portland Notice 265/2019

The vessel *Andrew Wilson* is conducting dredging operations in the entrance to Portland Harbour (38° 20'.67 S 141° 37'.31 E).

A submerged and floating pipeline, which is marked by lights, exists in the area.

The area around the northern end of Main Breakwater is a prohibited zone (38° 20'.67 S 141° 37'.46 E). The area to the west of this is a restricted zone and mariners are to exercise caution while transiting the area.

The vessel will display appropriate lights and shapes and will monitor VHF Ch 14 & Ch 16 or can be contacted by telephone on 0428 316 114 or 0400 822 358.

Mariners are advised to navigate with caution in the area.

Chart temporarily affected - Aus 140

1235(T)/2019 AUSTRALIA - TASMANIA - Macquarie Harbour - Scientific instrument recovered

Former Notice - 416(T)/2019 is cancelled

Marine and Safety Tasmania Notice 74/2019

Cancel this notice on receipt.

Chart formerly affected - Aus 177

HYDROGRAPHIC REPORTS

<i>Locality</i>	<i>Report</i>	<i>Ship/Authority</i>	<i>Observer</i>
WA- Turtle Islands	Uncharted rocks	Volunteer Marine Rescue Service Port Hedland	Brett

III

NAVIGATION WARNINGS

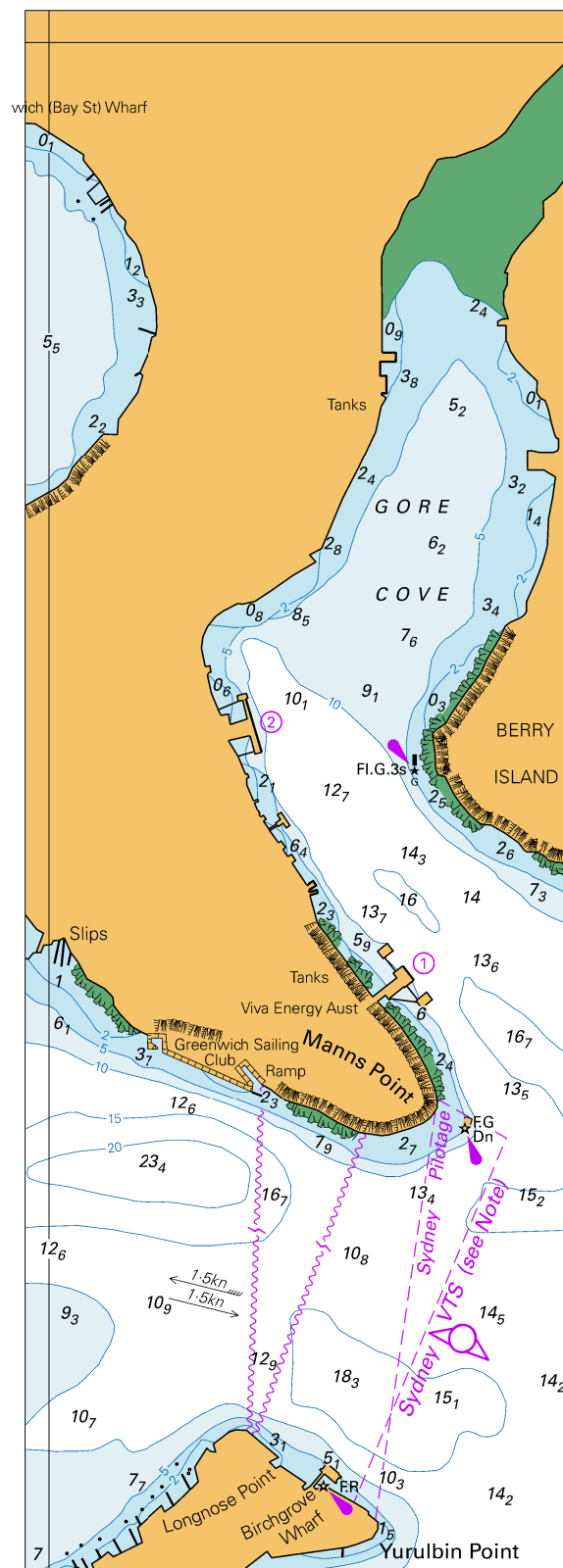
The Australian Hydrographic Office will no longer compile Section III of the Australian Notices to Mariners. For the most up to date navigation warnings please refer to:

AMSA Navigation Warnings

<http://amsa.gov.au/search-and-rescue/distress-and-safety-comms/msi/msi-email/index.asp>

New Zealand Notices to Mariners (Navarea XIV warnings)

<http://www.linz.govt.nz/sea/maritime-safety/notices-mariners>

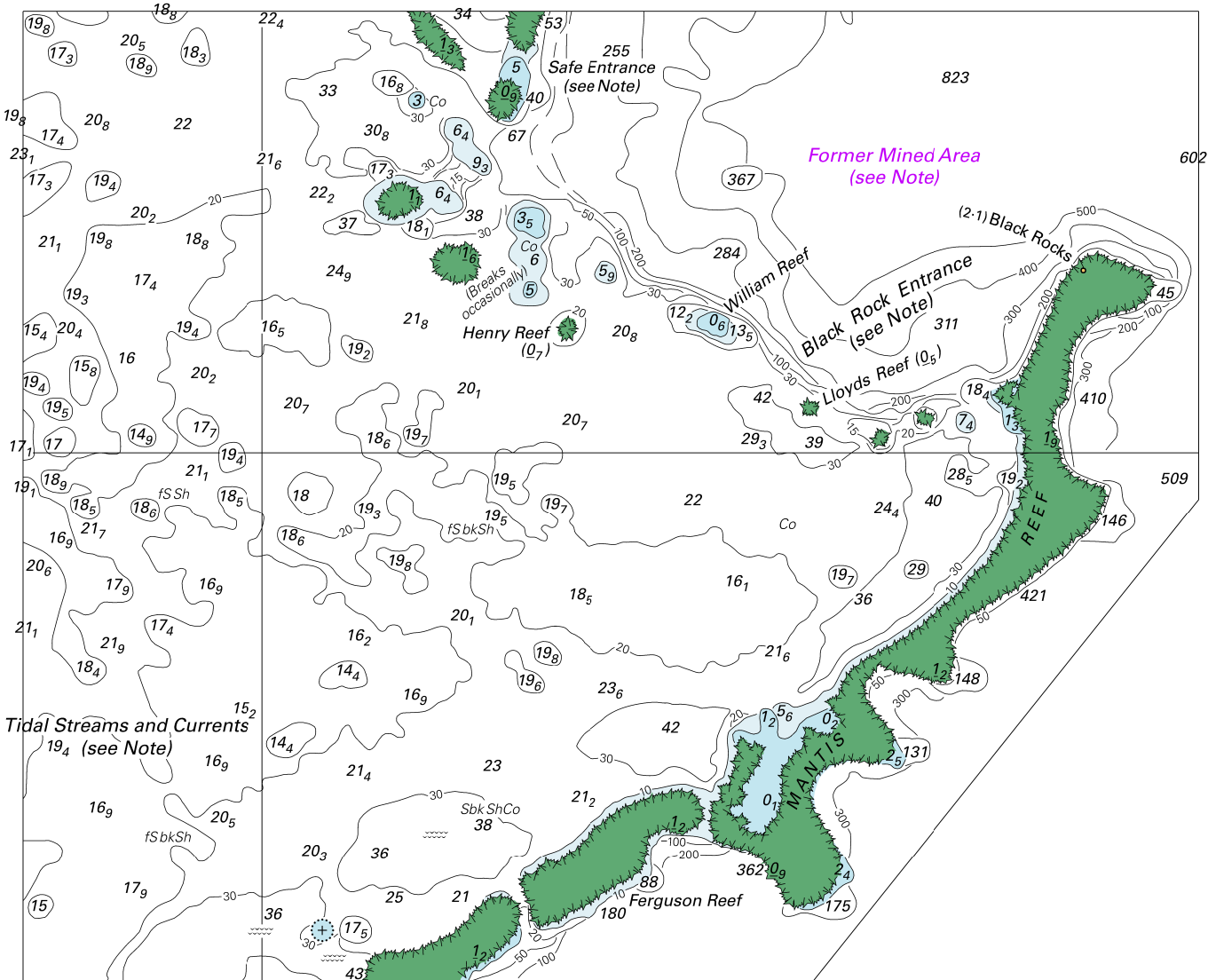


© Commonwealth of Australia 2019

Block for chart Aus 202

(73.0 x 210.5mm)

To accompany Australian Notice to Mariners 1191/2019

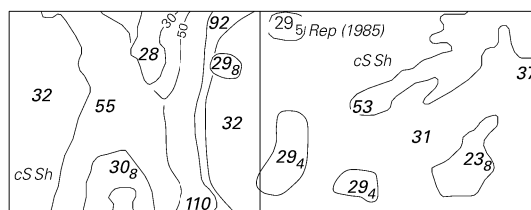


Block for Chart Aus 836

© Commonwealth of Australia 2019

(175.2 x 144.7mm)

To accompany Australian Notice to Mariners 1197/2019

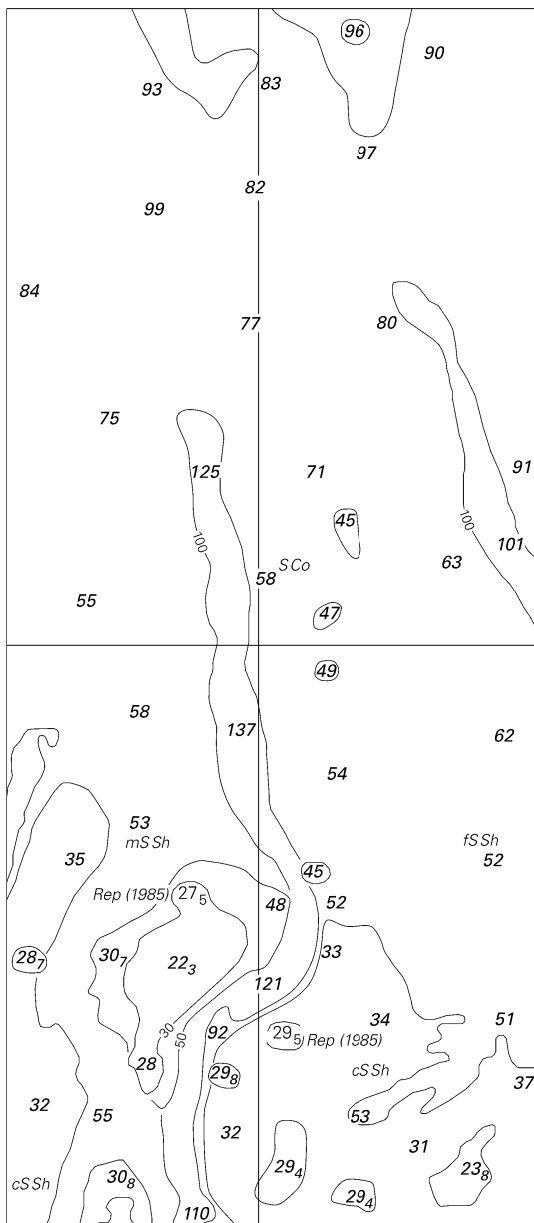


Block for chart Aus 309

(70.1 x 26.8mm)

© Commonwealth of Australia 2019

To accompany Australian Notice to Mariners 1197/2019

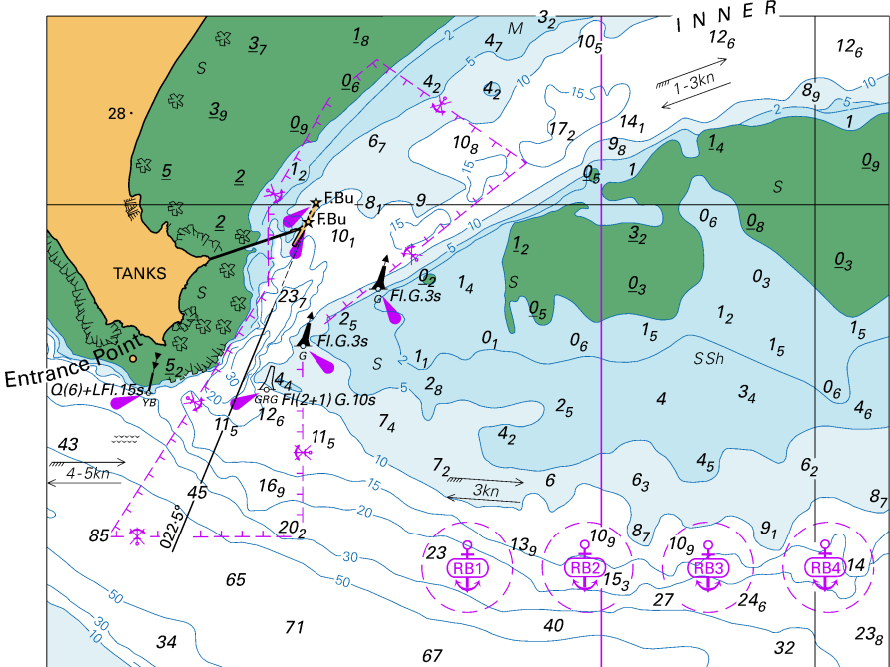


Block for chart Aus 310

(70.1 x 160.6mm)

© Commonwealth of Australia 2019

To accompany Australian Notice to Mariners 1198/2019

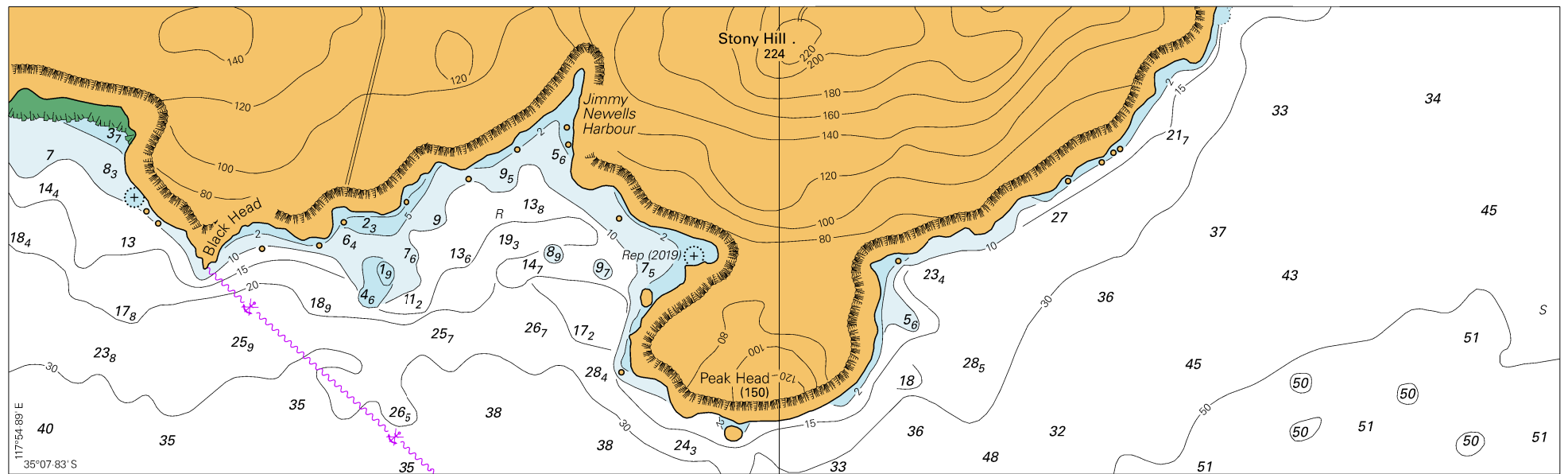


Block for chart Aus 50

© Commonwealth of Australia 2019

(111.4 x 86.3mm)

To accompany Australian Notice to Mariners 1200/2019

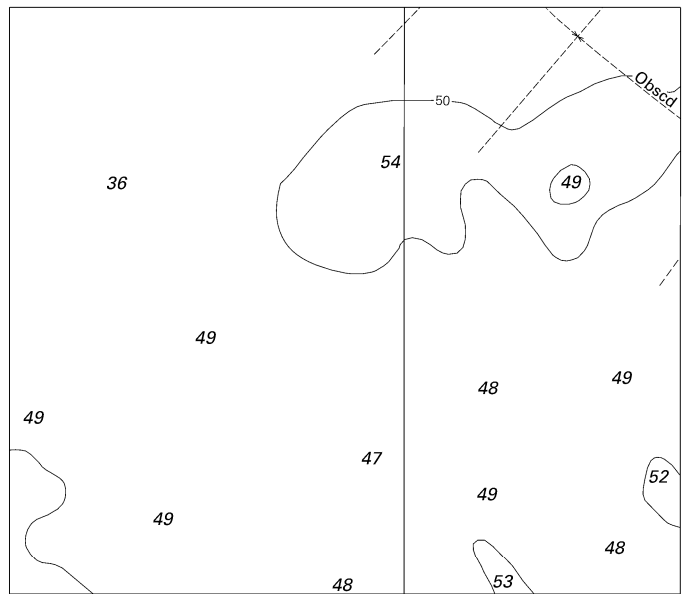


Block A for chart Aus110

© Commonwealth of Australia 2019

(258.1 x 77.6mm)

To accompany Australian Notice to Mariners 1200/2019

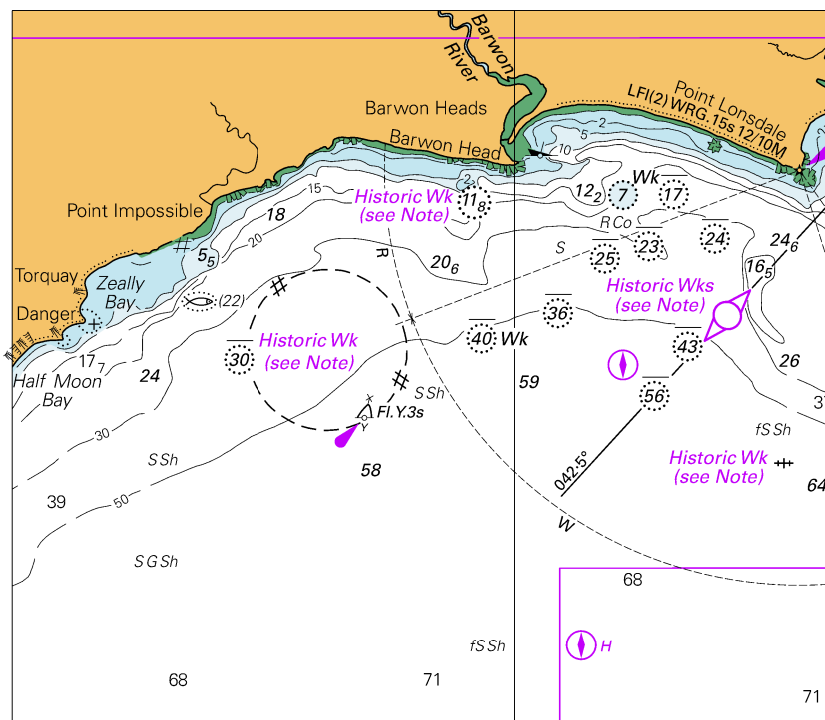


Block B for chart Aus110

(88.7 x 77.6mm)

© Commonwealth of Australia 2019

To accompany Australian Notice to Mariners 1212/2019



Block for chart Aus 349 © Commonwealth of Australia 2019

(108.4 x 94.4mm)