



1 November 2019

Edition 22

AUSTRALIAN NOTICES TO MARINERS

Notices 1128 - 1182

Published fortnightly by the Australian Hydrographic Office



Australian Notices to Mariners are the authority for correcting charts and publications published by the Australian Hydrographic Office covering Australia, Papua New Guinea, Solomon Islands, Australian Antarctic Territory and Timor-Leste.

Commodore F.T. FREEMAN RAN
Hydrographer of Australia

SECTIONS.

- I. **Australian Notices to Mariners, including blocks and notes.**
- II. **Hydrographic Reports.**
- III. **Navigational Warnings.**

SUPPLEMENTS.

- I. **Tracings**
- II. **Cumulative List of Australian Notices to Mariners.**
- III. **Cumulative List of Temporary and Preliminary Australian Notices to Mariners.**
- IV. **Temporary and Preliminary Notices in force.**
- V. **Amendments to Admiralty List of Lights and Fog Signals (Vol K), Radio Signals (NP 281(2), 282, 283(2), 285, 286(4)) and Sailing Directions (NP 9, 13, 14, 15, 33, 34, 35, 36, 39, 44, 51, 60, 61, 62, 100, 136).**

© Commonwealth of Australia 2019

This work is copyright. Apart from any use permitted under the Copyright Act 1968, no part may be reproduced by any process, adapted, communicated or commercially exploited without prior written permission from The Commonwealth represented by the Australian Hydrographic Office.

IMPORTANT NOTICE

This edition of Notices to Mariners includes all significant information affecting AHO products which the AHO has become aware of since the last edition. All reasonable efforts have been made to ensure the accuracy and completeness of the information, including third party information, on which these updates are based. The AHO regards third parties from which it receives information as reliable, however the AHO cannot verify all such information and errors may therefore exist. The AHO does not accept liability for errors in third party information.

GENERAL INSTRUCTIONS

The substance of these notices should be inserted on the charts affected.

Bearings are referred to the true compass and are reckoned clockwise from North; those relating to lights are given as seen by an observer from seaward.

Positions quoted in notices relate to WGS84 which is the horizontal datum for all charts produced by the Australian Hydrographic Office.

The range quoted for a light is its nominal range.

Depths are with reference to the chart datum of each chart. Heights are above mean high water springs or mean higher high water, as appropriate.

The capital letter (P) or (T) after the number of any notice denotes a preliminary or temporary notice respectively, which are contained separately at the end of the permanent notices.

REPORTING OF DANGERS

Mariners are particularly requested to notify the AUSTRALIAN HYDROGRAPHIC OFFICE, Locked Bag 8801 Wollongong, NSW 2500 (Fax 02-4223 6599, e-mail datacentre@hydro.gov.au or, alternatively by filling in and submitting the [Hydrographic Notes](#) forms located on the web site – www.hydro.gov.au), immediately on the discovery of new dangers or suspected dangers to navigation. For changes or defects in aids to navigation notify AusSAR (Fax 02-6230 6868 or email rccaus@amsa.gov.au).

AUTHORISED USE

Copies of Australian notices are available free of charge from the Australian Hydrographic Office (AHO) website (www.hydro.gov.au) and through the eNotices (email) service (www.hydro.gov.au/enotices/enotices.htm).

Individual Notices may be copied for the purpose of inserting Notice substance on official charts and publications. Paper copies may be printed by chart agents and distributed to customers on a cost recovery basis. Participating chart agents are listed on the AHO website as providing a 'Paper Notices to Mariners' service (www.hydro.gov.au/webapps/jsp/agents/agents-list.jsp). Copies of the notices may not be sold for profit without prior written agreement.

NUMERICAL INDEX OF NOTICES TO MARINERS

Edition No 22

Notices	Aus Chart, INT Chart, ENC Cell, AHP, BA Pubs
1128	Aus 518, PNG 518
1129	Products - New Charts and New Editions to be published shortly
1130	Amendment to Mariner's Handbook for Australian Waters AHP20
1131	Amendment to Australian National Tide Tables 2019
1132	Aus 202
1133	Aus 200
1134	Aus 4601, INT 601
1135	Aus 242
1136	Aus 264
1137	Aus 240, 241
1138	Aus 258
1139	Aus 249, 250
1140	Aus 4
1141	Aus 513, 517, 519, 4620, 4621, INT 620, 621, PNG 508
1142	Aus 662
1143	Aus 20, 722
1144	Aus 65, 66
1145	Aus 50, 51
1146	Aus 319, 320
1147	Aus 64, 69
1148	Aus 53, 54
1149	Aus 157, 158
1150	Aus 172
1151(T)	Aus 238
1152(T)	Aus 236, 238
1153(T)	Aus 238
1154(T)	Aus 237
1155(T)	Aus 262, 263
1156(P)	Aus 262, 263, 264
1157(T)	Aus 230
1158(T)	Aus 309, 722, 4721, INT 721
1159(T)	Aus 24
1160(T)	Aus 328, 4723, 4725, INT 723, 725
1161(T)	Aus 65, 66
1162(T)	Aus 319, 320, 322, 4721, 4722, INT 721, 722
1163(T)	Aus 319, 320, 322, 4721, 4722, INT 721, 722
1164(T)	Aus 327, 741, 4722, 4723, INT 722, 723
1165(T)	Aus 117
1166(T)	Aus 327
1167(T)	Aus 328
1168(P)	Aus 130, 137, 138, 781
1169(T)	Aus 143, 158
1170(T)	Aus 143, 155
1171(T)	Aus 173
1172(T)	Aus 173, 795, 796
1173(T)	Aus 171, 173, 795, 796
1174(T)	Aus 767, 798
1175(T)	Aus 793
1176(T)	Aus 168
1177(T)	Aus 798, 800
1178(T)	Aus 177, 792
1179(T)	Aus 172
1180(T)	Aus 168
1181(T)	Aus 175
1182(T)	Aus 173, 795, 796

NUMERICAL INDEX OF CHARTS AFFECTED

Edition No 22

Aus Chart	Notices
Aus 4	1140
Aus 20	1143
Aus 24	1159(T)
Aus 50	1145
Aus 51	1145
Aus 53	1148
Aus 54	1148
Aus 64	1147
Aus 65	1144, 1161(T)
Aus 66	1144, 1161(T)
Aus 69	1147
Aus 117	1165(T)
Aus 130	1168(P)
Aus 137	1168(P)
Aus 138	1168(P)
Aus 143	1169(T), 1170(T)
Aus 155	1170(T)
Aus 157	1149
Aus 158	1149, 1169(T)
Aus 168	1176(T), 1180(T)
Aus 171	1173(T)
Aus 172	1150, 1179(T)
Aus 173	1171(T), 1172(T), 1173(T), 1182(T)
Aus 175	1181(T)
Aus 177	1178(T)
Aus 200	1133
Aus 202	1132
Aus 230	1157(T)
Aus 236	1152(T)
Aus 237	1154(T)
Aus 238	1151(T), 1152(T), 1153(T)
Aus 240	1137
Aus 241	1137
Aus 242	1135
Aus 249	1139
Aus 250	1139
Aus 258	1138
Aus 262	1155(T), 1156(P)
Aus 263	1155(T), 1156(P)
Aus 264	1136, 1156(P)
Aus 309	1158(T)
Aus 319	1146, 1162(T), 1163(T)
Aus 320	1146, 1162(T), 1163(T)
Aus 322	1162(T), 1163(T)
Aus 327	1164(T), 1166(T)
Aus 328	1160(T), 1167(T)
Aus 513	1141
Aus 517	1141
Aus 518	1128
Aus 519	1141
Aus 662	1142
Aus 722	1143, 1158(T)
Aus 741	1164(T)
Aus 767	1174(T)

Aus Chart	Notices
Aus 781	1168(P)
Aus 792	1178(T)
Aus 793	1175(T)
Aus 795	1172(T), 1173(T), 1182(T)
Aus 796	1172(T), 1173(T), 1182(T)
Aus 798	1174(T), 1177(T)
Aus 800	1177(T)
Aus 4601	1134
Aus 4620	1141
Aus 4621	1141
Aus 4721	1158(T), 1162(T), 1163(T)
Aus 4722	1162(T), 1163(T), 1164(T)
Aus 4723	1160(T), 1164(T)
Aus 4725	1160(T)
PNG 508	1141
PNG 518	1128

INT Chart	Notices
INT 601	1134
INT 620	1141
INT 621	1141
INT 721	1158(T), 1162(T), 1163(T)
INT 722	1162(T), 1163(T), 1164(T)
INT 723	1160(T), 1164(T)
INT 725	1160(T)

1128 AUSTRALIA - Products - New Charts, New Editions, Withdrawn Charts

Australian Hydrographic Office

New Charts

<i>Chart</i>	<i>Title and Geographical limits</i>	<i>Scale</i>	<i>Publication Date</i>	<i>Remarks</i>
PNG 518	Papua New Guinea - North East Coast - Goschen Strait to Ward Hunt Strait 9° 15'·50 S – 10° 08'·48 S 149° 42'·00 E – 151° 06'·46 E	1:150 000	1 November 2019	Adoption of Papua New Guinea chart numbering. Replaces Aus 518. General updating throughout; including latest bathymetric data.

New Electronic Navigation Chart (Aus ENC)

<i>Cell Name</i>	<i>Title</i>	<i>Publication Date</i>	<i>Remarks</i>
NIL			

New Editions and Withdrawn Charts

<i>Chart</i>	<i>Title</i>	<i>Scale</i>	<i>Publication Date</i>	<i>Remarks</i>
NIL				

Charts withdrawn

<i>Chart</i>	<i>Remarks</i>
Aus 518	On publication of new chart PNG 518

Chart permanently withdrawn

Charts listed above as withdrawn no longer meet chart carriage requirements and should be marked as "superseded" and replaced with the new chart/ new edition listed prior to passage through the area covered by the new chart.

When placing orders with a chart agent between notice of forthcoming edition and its publication, mariners should advise whether their order pertains to the current edition or the new edition.

For further details refer to the AHO website at www.hydro.gov.au for new edition and new chart stock arrival information.

1129 AUSTRALIA - Products - New Charts and New Editions to be published shortly
Australian Hydrographic Office

New Charts to be published shortly

<i>Chart</i>	<i>Title</i>	<i>Scale</i>	<i>Expected Publication Date</i>	<i>Remarks</i>
NIL				

New Editions to be published shortly

<i>Chart</i>	<i>Title</i>	<i>Scale</i>	<i>Expected Publication Date</i>	<i>Remarks</i>
NIL				

Charts to be withdrawn without replacement 29 November 2019

<i>Chart</i>	<i>Title</i>	<i>Scale</i>	<i>Publication Date</i>
Aus 280 Edition 5	Australia - East Coast - Queensland - Plans in Queensland (Sheet 3) Plans: Magpie Reef to Eden Reef Flinders Group	1:75 000 1:50 000	22 February 2019
Aus 281 Edition 3	Australia - East Coast - Queensland - First Three Mile Opening to Cape Direction	1:75 000	22 February 2019
Aus 739 Edition 3	Australia - North West Coast - Western Australia - Bedout Islet to Port Hedland	1:150 000	15 January 2010
Aus 740 Edition 3	Australia - North West Coast - Western Australia - Port Hedland to Port Walcott Inset: Depuch Island Anchorage	1:150 000 1:20 000	15 January 2010
Aus 741 Edition 3	Australia - North West Coast - Western Australia - Approaches to Dampier Archipelago	1:150 000	6 November 2015
Aus 751 Edition 2	Australia - West Coast - Western Australia - Houtman Abrolhos and Geelvink Channel	1:150 000	29 June 2012

Charts withdrawn without replacement 12 December 2019

<i>Chart</i>	<i>Title</i>	<i>Scale</i>	<i>Publication Date</i>
Aus 66 Edition 2	Australia - North West Coast - Western Australia - Barrow Island - Town Point	1:10 000	30 January 2015
Aus 67 Edition 1	Australia - North West Coast - Western Australia - Barrow Island - Wapet Landing	1:7 500	2 November 2012

1130 AUSTRALIA - Product - Amendment to Mariner's Handbook for Australian Waters AHP20
Australian Hydrographic Office

Chapter 11 - Oil and Gas Terminals - 11.14 pages 248 and 249

Replace tables with accompanying blocks

1131 AUSTRALIA - Product - Amendment to Australian National Tide Tables 2019
Australian Hydrographic Office

ANTT 2019

Page 335

Amend PENNEFATHER RIVER To Chart Datum to UNK
CULLEN POINT To Chart Datum to UNK

Page 342

Amend WILSON HEAD To Chart Datum to UNK
NORNALUP INLET To Chart Datum to UNK
WINDY HARBOUR To Chart Datum to UNK
CAPE HAMELIN To Chart Datum to UNK
COWARAMUP To Chart Datum to UNK

Page 359

Delete BUNDABERG To Chart Datum AUS 243 NE 06 JAN 2006 0.0

Page 361

Amend GERALDTON To Chart Datum AUS 81 NE 04 OCT 2019 0.0

Page 367

Amend WEIPA To Chart Datum AUS 301 NE 18 OCT 2019 UNK

1132 AUSTRALIA - NEW SOUTH WALES - Port Jackson - Darling Harbour - Peacock Point - Light beacon
Port Authority of New South Wales

Aus 202 [1035/2019]

Amend light beacon to Oc.G.2s 33° 51'.60 S 151° 11'.80 E

1133 AUSTRALIA - NEW SOUTH WALES - Port Jackson - Anzac Bridge - Light
UKHO

Aus 200 [1035/2019]

Amend light to 2F.R 33° 52'.16 S 151° 11'.18 E

1134 AUSTRALIA - TASMAN SEA - Tasman Basin - Light buoys
Former Notice - 109(T)/2018 is cancelled
Australian Bureau of Meteorology

Aus 4601 (INT 601) [466/2019]

<i>Insert</i>	special conical light buoy, <i>Fl.Y.2s</i> , without topmark	44° 47'.4 S	161° 42'.0 E
	out of position special conical light buoy, <i>Fl.2s</i> , without topmark	46° 57'.4 S	160° 20'.6 E
<i>Delete</i>	out of position light buoy	44° 53'.9 S	161° 50'.5 E
	out of position light buoy	46° 49'.8 S	160° 15'.5 E

1135 AUSTRALIA - QUEENSLAND - Bundaberg - Burnett River - Long Reach - Lights

Maritime Safety Queensland Notice 457/2019

Aus 242 (Burnett River (Northern Section)) [1082/2019]

Insert	rectangular daymark	24° 47'.509 S	152° 23'.068 E
	rectangular daymark	24° 47'.568 S	152° 23'.080 E
Amend	light to <i>Q.Bu (Q Day)</i>	24° 47'.51 S	152° 23'.07 E
	light to <i>Iso.Bu.2s (Iso.2s Day)</i>	24° 47'.57 S	152° 23'.08 E

1136 AUSTRALIA - QUEENSLAND - Cairns - Trinity Inlet - Mooring piles

Former Notice - 1054(T)/2019 is cancelled

Maritime Safety Queensland Notice 461/2019

Aus 264 [760/2019]

Insert	lit mooring pile, Q.Y	16° 57'.571 S	145° 47'.857 E
	lit mooring pile, Q.Y	16° 57'.645 S	145° 47'.819 E
	lit mooring pile, Q.Y	16° 57'.706 S	145° 47'.813 E
	lit mooring pile, Q.Y	16° 57'.765 S	145° 47'.808 E
Delete	depth, 7 ₅ m	16° 57'.65 S	145° 47'.82 E

1137 AUSTRALIA - QUEENSLAND - Great Sandy Strait - Bookar Island - Wreck

Australian Hydrographic Office

Aus 240 [1039/2019]

Insert	# with legend, <i>Wk</i>	25° 29'.83 S	152° 58'.94 E
--------	--------------------------	--------------	---------------

Aus 241 [817/2019]

Insert	# with legend, <i>Wk</i>	25° 29'.83 S	152° 58'.94 E
--------	--------------------------	--------------	---------------

1138 AUSTRALIA - QUEENSLAND - Mourilyan Harbour - Maintained depths

Maritime Safety Queensland Notice 447(T)/2019

Aus 258 (Mourilyan Harbour) [864/2019]

Amend	legend to <i>Maintained depth 7-6m</i>	17° 36'.06 S	146° 07'.35 E
	legend to <i>Maintained depth 8-6m</i>	17° 36'.10 S	146° 07'.47 E

1139 AUSTRALIA - QUEENSLAND - Slade Island - Light buoy; AIS southeastwards

Maritime Safety Queensland Notice 446/2019

Aus 249 [766/2019]

Replace	light buoy with east cardinal cylindrical light buoy, VQ(3)5s, without topmark and magenta circle with legend, <i>AIS</i>	21° 06'.1 S	149° 15'.5 E
---------	---	-------------	--------------

Aus 250 (Mackay Harbour) [765/2019]

Replace	light buoy with east cardinal cylindrical light buoy, VQ(3)5s, without topmark and magenta circle with legend, <i>AIS</i>	21° 06'.15 S	149° 15'.51 E
---------	---	--------------	---------------

1140 AUSTRALIA - QUEENSLAND - Weipa - Hey River - Mooring buoys

Maritime Safety Queensland Notice 453/2019

Aus 4 [1083/2019]

Insert	lit orange cylindrical mooring buoy, Q	12° 46'.58 S	141° 54'.31 E
	lit orange cylindrical mooring buoy, Q	12° 46'.76 S	141° 54'.38 E
	lit orange cylindrical mooring buoy, Q	12° 46'.93 S	141° 54'.45 E
Delete	depth, 12 ₀ m	12° 46'.5 S	141° 54'.3 E

1141 PAPUA NEW GUINEA - Goschen Strait to Ward Hunt Strait - Chart name

Australian Hydrographic Office

Aus 513 [1087/2019]Amend legend to *Adjoining Chart PNG 518* in W border 9° 47'.5 S 151° 00'.5 E**Aus 517 [1087/2019]**Amend legend to *Adjoining Chart PNG 518* in W border 9° 27'.5 S 150° 00'.4 E**Aus 519 [473/2019]**Amend legend to *Adjoining Chart PNG 518* in S border 9° 39'.0 S 150° 05'.0 E**Aus 4620 (INT 620) [1000/2019]**Amend legend to *PNG 518* 10° 07'.0 S 149° 48'.0 E**Aus 4621 (INT 621) [1087/2019]**Amend legend to *PNG 518* 9° 17'.0 S 151° 02'.0 E**PNG 508 [1000/2019]**Amend legend to *Adjoining Chart PNG 518* in N border 10° 04'.2 S 150° 42'.5 E**1142 PAPUA NEW GUINEA - Lombrum Bay - Wreck**HMAS *Benalla* and HMAS *Shepparton***Aus 662 [647/2019]**Insert depth, 8_5m , enclosed by danger circle with legend, *Wk* 2° 02'.534 S 147° 22'.497 E**Aus 662 (Lombrum Bay) [647/2019]**Insert depth, 8_5m , enclosed by danger circle with legend, *Wk* 2° 02'.534 S 147° 22'.497 E**1143 AUSTRALIA - NORTHERN TERRITORY - Clarence Strait - Howard Channel - Depth**HMAS *Leeuwin***Aus 20 [157/2019]**Insert depth, 19_9m , enclosed by contour 12° 05'.15 S 131° 09'.59 Edepth, 19_4m , enclosed by contour 12° 05'.62 S 131° 08'.14 E**Aus 722 [775/2019]**

Insert contour, between 12° 05'.64 S 131° 07'.90 E

12° 05'.62 S 131° 08'.18 E

12° 05'.42 S 131° 08'.04 E

contour, between 12° 05'.01 S 131° 09'.65 E

12° 05'.15 S 131° 09'.55 E

12° 05'.14 S 131° 09'.77 E

Delete contour, between 12° 05'.6 S 131° 07'.9 E

12° 05'.4 S 131° 08'.0 E

contour, between 12° 05'.0 S 131° 09'.7 E

12° 05'.1 S 131° 09'.8 E

1144 AUSTRALIA - WESTERN AUSTRALIA - Barrow Island - Light beacons

Chevron Australia Notice 3/2019

Aus 65 [875/2019]

Delete light beacon 20° 49'.8 S 115° 32'.8 E

light beacon 20° 50'.2 S 115° 32'.9 E

Aus 66 [875/2019]

Delete light beacon 20° 49'.76 S 115° 32'.84 E

light beacon 20° 50'.23 S 115° 32'.90 E

1145 AUSTRALIA - WESTERN AUSTRALIA - Broome - Depths; nav aids; rock

Former Notices - 615(T)/2019, 729(T)/2019, 912(T)/2019 are cancelled
Kimberley Pilotage Group, BMT

Note: Block correction for Aus50 in next Notice to Mariners Edition

Aus 50 [699/2019]

Delete rock and legend, Channel Rock (1₂) 18° 00'.6 S 122° 12'.9 E

Aus 51 [699/2019]

Insert accompanying block 18° 00'.70 S 122° 12'.82 E

1146 AUSTRALIA - WESTERN AUSTRALIA - Browse Island - FPSO northwestwards

Former Notice - 576(T)/2017 is cancelled

Shell Australia

Aus 319 [1044/2019]

Insert lit FPSO, *Prelude Mo(U)11s 15M*, and magenta circle, with legend
Racon (Y) 13° 47'.18 S 123° 19'.05 E

Aus 320 [1044/2019]

Insert lit FPSO, *Prelude Mo(U)11s 15M*, and magenta circle, with legend
Racon (Y) 13° 47'.18 S 123° 19'.05 E

1147 AUSTRALIA - WESTERN AUSTRALIA - Onslow - Mooring buoys

Department of Transport WA Notice 121/2019

Aus 64 [1088/2019]

Insert yellow conical mooring buoy 21° 37'.15 S 115° 07'.10 E
yellow conical mooring buoy 21° 37'.19 S 115° 06'.95 E
yellow conical mooring buoy 21° 37'.34 S 115° 06'.96 E

Aus 69 (Onslow) [1131/2018]

Insert yellow conical mooring buoy 21° 37'.148 S 115° 07'.100 E
yellow conical mooring buoy 21° 37'.193 S 115° 06'.945 E
yellow conical mooring buoy 21° 37'.339 S 115° 06'.959 E

1148 AUSTRALIA - WESTERN AUSTRALIA - Port Hedland - Tower removed

Australian Maritime Safety Authority

Aus 53 [879/2019]

Delete tower with legend, SHIPPING CONTROL TR (31) 20° 18'.9 S 118° 34'.6 E

Aus 54 [826/2019]

Delete tower with legend, SHIPPING CONTROL TOWER (31) 20° 18'.91 S 118° 34'.58 E

1149 AUSTRALIA - VICTORIA - Port Phillip - Coles Channel - Light beacons

Parks Victoria Notice 259/2019

Aus 157 [884/2019]

Replace beacon with starboard lateral light beacon, *Fl. G. 5s No5*, with topmark 38° 11'.96 S 144° 43'.18 E

Aus 158 [944/2019]

Replace beacon with starboard lateral light beacon, *Fl. G. 5s No5*, with topmark 38° 11'.96 S 144° 43'.18 E
beacon with starboard lateral light beacon, *Fl. G. 5s No3*, with topmark 38° 12'.94 S 144° 42'.81 E

1150 AUSTRALIA - TASMANIA - Hobart - Macquarie Point - Infrastructure; light

Former Notice - 635(T)/2019 is cancelled
Tasmanian Ports Corporation

Aus 172 [1137/2018]

Insert	continuous line, between	42° 52'.627 S	147° 20'.459 E
		42° 52'.626 S	147° 20'.467 E
Move	light to	42° 52'.607 S	147° 20'.465 E
		42° 52'.603 S	147° 20'.449 E
Delete	continuous line, between	42° 52'.63 S	147° 20'.46 E
		42° 52'.62 S	147° 20'.46 E
		42° 52'.62 S	147° 20'.47 E
		42° 52'.63 S	147° 20'.47 E

Aus 172 (Sullivans Cove) [1137/2018]

Insert	continuous line, between	42° 52'.627 S	147° 20'.459 E
		42° 52'.626 S	147° 20'.467 E
Move	light to	42° 52'.607 S	147° 20'.465 E
		42° 52'.603 S	147° 20'.449 E
Delete	continuous line, between	42° 52'.63 S	147° 20'.46 E
		42° 52'.62 S	147° 20'.46 E
		42° 52'.62 S	147° 20'.47 E
		42° 52'.63 S	147° 20'.47 E

1151(T)/2019 AUSTRALIA - QUEENSLAND - Brisbane River - Town Reach - Harbour works completed

Former Notice - 595(T)/2019 is cancelled
 Maritime Safety Queensland Notice 264(T)/2019

Cancel this notice on receipt.

Chart formerly affected - Aus 238

1152(T)/2019 AUSTRALIA - QUEENSLAND - Brisbane River - Hamilton Reach - Harbour works completed

Former Notice - 69(T)/2019 is cancelled
 Maritime Safety Queensland

Cancel this notice on receipt.

Chart formerly affected - Aus 236 - Aus 238

1153(T)/2019 AUSTRALIA - QUEENSLAND - Brisbane River - South Brisbane Reach - Pontoons; light buoys recovered

Former Notice - 955(T)/2019 is cancelled
 Maritime Safety Queensland

Cancel this notice on receipt.

Chart formerly affected - Aus 238

1154(T)/2019 AUSTRALIA - QUEENSLAND - Brisbane River - Inner Bar Reach - Harbour works completed

Former Notice - 954(T)/2019 is cancelled
 Maritime Safety Queensland 402(T)/2019

Cancel this notice on receipt.

Chart formerly affected - Aus 237

1155(T)/2019 AUSTRALIA - QUEENSLAND - Cairns - Shoaling charted

Former Notice - 253(P)/2017 is cancelled
 Ports North

Cancel this notice on receipt.

Chart formerly affected - Aus 262 - Aus 263

1156(P)/2019 AUSTRALIA - QUEENSLAND - Cairns - Dredged channel

Ports North , Maritime Safety Queensland Notice 467(T)/2019

The entrance channel and Trinity Inlet have been widened and dredged to a depth of 9·0m.

The eastern portion of the swing basin in position 16° 55'.54 S 145° 46'.94 E has been dredged to 8·5m.

The Trinity Inlet channel has been dredged further southwards to a depth of 9·0m to a new swing basin in position 16° 56'.45 S 145° 46'.91 E, with a depth of 8·3m.

Berths 1 to 6 (16° 55'.65 S 145° 46'.82 E) have been dredged to a depth of 9·3m.

Charts will be updated in due course.

Chart which will be affected - Aus 262 - Aus 263 - Aus 264

1157(T)/2019 AUSTRALIA - QUEENSLAND - Narrowneck Reef - Scientific instrument recovered

Former Notice - 342(T)/2019 is cancelled
Maritime Safety Queensland Notice 142(T)/2019

Cancel this notice on receipt.

Chart formerly affected - Aus 230

1158(T)/2019 AUSTRALIA - NORTHERN TERRITORY - Beagle Gulf - Drill rig

MODU *Noble Tom Prosser*

Drill rig *Noble Tom Prosser* is moored in position 12° 11'.38 S 130° 35'.52 E.

Chart temporarily affected - Aus 309 - Aus 722 - Aus 4721 (INT 721)

1159(T)/2019 AUSTRALIA - NORTHERN TERRITORY - Darwin - Mooring buoy unlit

S Milsom, Department of Infrastructure, Planning and Logistics NT

Lit mooring buoy, *Fl.Y.5s* (12° 27'.98 S 130° 49'.91 E), is unlit.

Chart temporarily affected - Aus 24

1160(T)/2019 AUSTRALIA - WESTERN AUSTRALIA - Barrow Island - Gas field decommissioned westwards

Former Notice - 131(T)/2019 is cancelled
Quadrant Energy

Cancel this notice on receipt.

Chart formerly affected - Aus 328 - Aus 4723 (INT 723) - Aus 4725 (INT 725)

1161(T)/2019 AUSTRALIA - WESTERN AUSTRALIA - Barrow Island - Town Point - Survey operations completed

Former Notice - 463(T)/2018 is cancelled
Chevron Australia Pty Ltd Notice 2/2018

Cancel this notice on receipt.

Chart formerly affected - Aus 65 - Aus 66

1162(T)/2019 AUSTRALIA - WESTERN AUSTRALIA - Browse Island - Subsea operations

Former Notice - 219(T)/2018 is cancelled
McDermott Australia

On or about 12 November 2019, Vessel *LV108* and support vessels will be conducting subsea operations in an area bounded by the following positions:

14° 00'.0 S 123° 05'.0 E
14° 00'.0 S 123° 20'.0 E
13° 44'.0 S 123° 20'.0 E
13° 44'.0 S 123° 05'.0 E.

Mariners are advised to navigate with caution in the area. 2.5M clearance requested.

Chart temporarily affected - Aus 319 - Aus 320 - Aus 322 - Aus 4721 (INT 721) - Aus 4722 (INT 722)

1163(T)/2019 AUSTRALIA - WESTERN AUSTRALIA - Browse Island - Subsea operations

McDermott Australia

On or about 11 November 2019, Vessel *Offshore Solution* will be conducting subsea operations in an area bounded by the following positions:

14° 01'.23 S 123° 04'.31 E
 14° 01'.23 S 123° 10'.08 E
 13° 59'.92 S 123° 10'.08 E
 13° 59'.92 S 123° 20'.08 E
 13° 49'.92 S 123° 20'.08 E
 13° 49'.92 S 123° 15'.08 E
 13° 48'.46 S 123° 15'.07 E
 13° 48'.46 S 123° 11'.64 E
 14° 00'.27 S 123° 04'.31 E.

Mariners are advised to navigate with caution in the area. 2·5M clearance requested.

Chart temporarily affected - Aus 319 - Aus 320 - Aus 322 - Aus 4721 (INT 721) - Aus 4722 (INT 722)

1164(T)/2019 AUSTRALIA - WESTERN AUSTRALIA - Dampier Archipelago - Subsea operations northwestwards

Woodside Energy Ltd

On or about 5 November 2019, Vessel *Sapura Constructor* will be conducting subsea operations in positions 19° 34'.68 S 116° 27'.00 E and 19° 35'.52 S 116° 26'.08 E.

Mariners are advised to navigate with caution in the area.

Chart temporarily affected - Aus 327 - Aus 741 - Aus 4722 (INT 722) - Aus 4723 (INT 723)

1165(T)/2019 AUSTRALIA - WESTERN AUSTRALIA - Garden Island - Beacon Head - Obstruction; light buoy

Fremantle Ports Notice 6(T)/2019, Department of Transport WA

An obstruction marked by a spherical isolated danger light buoy, *F(2)10s*, exists in position 32° 09'.16 S 115° 40'.65 E.

Chart temporarily affected - Aus 117

1166(T)/2019 AUSTRALIA - WESTERN AUSTRALIA - Glomar Shoal - Survey operations northwestwards completed*Former Notice - 975(T)/2019 is cancelled*

Australian Maritime Safety Authority

Cancel this notice on receipt.

Chart formerly affected - Aus 327

1167(T)/2019 AUSTRALIA - WESTERN AUSTRALIA - Montebello Islands - Drilling operations northwestwards completed*Former Notice - 1023(T)/2019 is cancelled*

Woodside Energy Ltd

Cancel this notice on receipt.

Chart formerly affected - Aus 328

1168(P)/2019 AUSTRALIA - SOUTH AUSTRALIA - Port Adelaide - Dredged channel; nav aids

Former Notice - 569(T)/2019 is cancelled

Department of Planning, Transport and Infrastructure SA Notice 3/2019, 8/2019, 37/2019

The Entrance Channel (34° 47'.19 S 138° 24'.51 E) has been widened to 170m and the Swinging Basin (34° 46'.02 S 138° 29'.19 E) has been expanded to a diameter of 550m.

Nav aids marking the southern edge of the Entrance Channel, including leading light beacons in positions 34° 46'.71 S 138° 21'.59 E and 34° 46'.74 S 138° 21'.81 E, and north of the eastern Outer Harbor Swinging Basin dredged limit have been removed.

Nav aids that have been removed may be replaced with Virtual Aids to Navigation or temporary buoys.

Mariners are advised to navigate with caution in the area.

Chart which will be affected - Aus 130 - Aus 137 - Aus 138 - Aus 781

1169(T)/2019 AUSTRALIA - VICTORIA - Port Phillip - Pinnacle Channel - Light buoy restored

Former Notice - 852(T)/2019 is cancelled

Parks Victoria

Cancel this notice on receipt.

Chart formerly affected - Aus 143 - Aus 158

1170(T)/2019 AUSTRALIA - VICTORIA - Port Phillip - Sandringham - Light beacon unlit

Former Notice - 1126(T)/2019 is cancelled

Parks Victoria Notice 121(T)/2019, 256(T)/2019

The starboard lateral light beacon, *Fl(2)G.5s 5m 4M* (37° 56'.48 S 144° 59'.56 E), is unlit.

Chart temporarily affected - Aus 143 - Aus 155

1171(T)/2019 AUSTRALIA - TASMANIA - Bruny Island - Variety Point - Light buoys

Marine and Safety Tasmania Notice M147/2019

Special light buoys, *Fl. Y. 4s*, exist in positions 43° 12'.08 S 147° 27'.01 E and 43° 12'.19 S 147° 27'.42 E.

Chart temporarily affected - Aus 173

1172(T)/2019 AUSTRALIA - TASMANIA - Bruny Island - Adventure Bay - Scientific instruments recovered southeastwards

Former Notice - 1009(T)/2016 is cancelled

Marine and Safety Tasmania Notice M139/2016

Cancel this notice on receipt.

Chart formerly affected - Aus 173 - Aus 795 - Aus 796

1173(T)/2019 AUSTRALIA - TASMANIA - Bruny Island - Storm Bay - Light buoy recovered

Former Notice - 1051(T)/2018 is cancelled

Marine and Safety Tasmania Notice 195/2018

Cancel this notice on receipt.

Chart formerly affected - Aus 171 - Aus 173 - Aus 795 - Aus 796

1174(T)/2019 AUSTRALIA - TASMANIA - Eddystone Point - Scientific instruments recovered southeastwards

Former Notice - 1010(T)/2016 is cancelled
Marine and Safety Tasmania Notice M139/2016

Cancel this notice on receipt.

Chart formerly affected - Aus 767 - Aus 798

1175(T)/2019 AUSTRALIA - TASMANIA - Flying Cloud Point - Scientific instruments recovered westwards

Former Notice - 1011(T)/2016 is cancelled
Marine and Safety Tasmania Notice M139/2016

Cancel this notice on receipt.

Chart formerly affected - Aus 793

1176(T)/2019 AUSTRALIA - TASMANIA - Launceston - North Esk River - Harbour works completed

Former Notice - 1002(T)/2017 is cancelled
Marine and Safety Tasmania Notice 143/2017

Cancel this notice on receipt.

Chart formerly affected - Aus 168

1177(T)/2019 AUSTRALIA - TASMANIA - Lookout Head - Scientific instrument recovered

Former Notice - 799(T)/2018 is cancelled
Marine and Safety Tasmania Notice M52/2018

Cancel this notice on receipt.

Chart formerly affected - Aus 798 - Aus 800

1178(T)/2019 AUSTRALIA - TASMANIA - Macquarie Harbour - Scientific instruments recovered

Former Notice - 440(T)/2017 is cancelled
Marine and Safety Tasmania Notice M70/2017

Cancel this notice on receipt.

Chart formerly affected - Aus 177 - Aus 792

1179(T)/2019 AUSTRALIA - TASMANIA - Prince of Wales Bay - Moored vessel moved

Former Notice - 636(T)/2019 is cancelled
Marine and Safety Tasmania Notice M113/2019

Cancel this notice on receipt.

Chart formerly affected - Aus 172

1180(T)/2019 AUSTRALIA - TASMANIA - River Tamar - Moriarty Reach - Scientific instruments recovered

Former Notice - 1225(T)/2016 is cancelled
Marine and Safety Tasmania Notice M194/2016

Cancel this notice on receipt.

Chart formerly affected - Aus 168

1181(T)/2019 AUSTRALIA - TASMANIA - Spring Bay - Paddys Point - Marine farm removed

Former Notice - 134(T)/2018 is cancelled

Marine and Safety Tasmania Notice M14/2018

Cancel this notice on receipt.

Chart formerly affected - Aus 175

1182(T)/2019 AUSTRALIA - TASMANIA - Storm Bay - Scientific instrument recovered

Former Notice - 597(T)/2018 is cancelled

Marine and Safety Tasmania Notice 116/2018

Cancel this notice on receipt.

Chart formerly affected - Aus 173 - Aus 795 - Aus 796

II

HYDROGRAPHIC REPORTS

NIL

III

NAVIGATION WARNINGS

The Australian Hydrographic Office will no longer compile Section III of the Australian Notices to Mariners. For the most up to date navigation warnings please refer to:

AMSA Navigation Warnings

<http://amsa.gov.au/search-and-rescue/distress-and-safety-comms/msi/msi-email/index.asp>

New Zealand Notices to Mariners (Navarea XIV warnings)

<http://www.linz.govt.nz/sea/maritime-safety/notices-mariners>

Exeter and Mutineer	
WA (19° 16' 33S, 116° 36' 46E)	
UN/LOCODE: AU MOD	
Paper chart:	Aus 741
AusENC cells:	AU320116, AU220110
Security Regulated Offshore Facility:	Yes
Operator:	Santos
Website:	www.santos.com
Telephone:	+61 8 918 7100
Pilots:	West Coast Pilots
Telephone:	+61 8 9336 1179
Email:	manager@westcoastpilots.com.au
Pilotage:	Compulsory
Pilot Boarding Ground:	2.5nm radius centred around the FPSO
Communication	
Call up, emergencies:	VHF Channel 16 & 72 (listening)
Operator / Pilots:	VHF Channel 72 (working)
Notice of ETA:	5 days then 72, 48, 12 hours before arrival

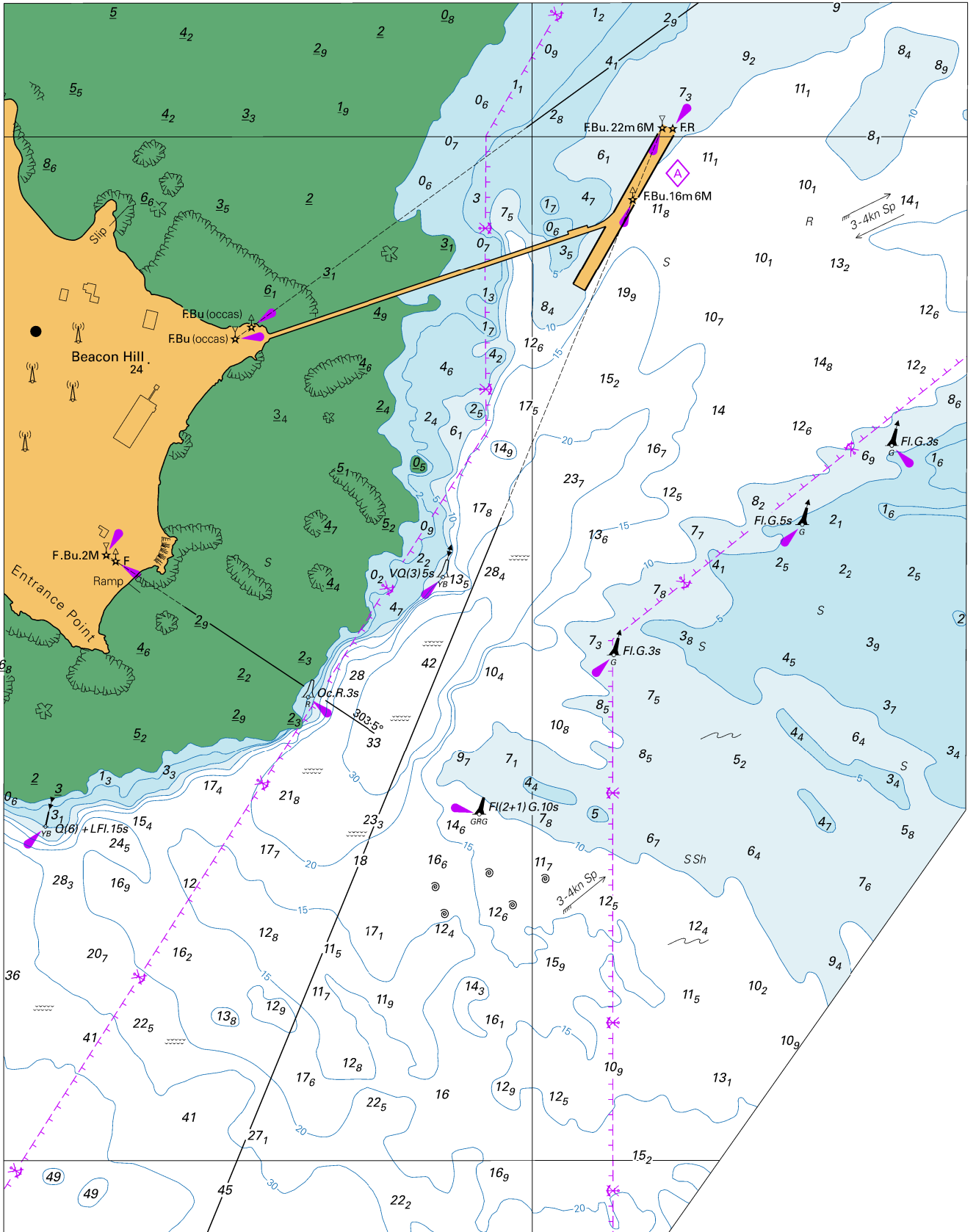
Pyrenees Venture WA (21° 32' 30S, 114° 07' 00E) UN/LOCODE: AU PYE	
Paper charts:	Aus 328, 744
AusENC cells:	AU422114, AU322113, AU230110
Security Regulated Offshore Facility:	Yes
Operator:	BHP Billiton
Website:	www.bhpbilliton.com
Email:	PETPYROIM2@bhpbilliton.com
Telephone:	+61 8 9485 6600
Pilotage:	Compulsory
Pilot Boarding Ground:	21°37.8'S, 114°15.00'E
Communication	
Call up, emergencies:	VHF Channel 16, 72
Operator / Pilots:	VHF Channel 72 (primary working channel)
Notice of ETA:	96, 72, 48, 24 and 12 Hours before intended arrival
More Information:	Pyrenees Terminal Handbook (contact BHP Billiton)

Stag (Dampier Spirit) WA (20° 16' 18S, 116° 16' 34E) UN/LOCODE: AU STG	
Paper chart:	Aus 742
AusENC cells:	AU421116, AU230110
Security Regulated Offshore Facility:	Yes
Operator:	Jadestone Energy Pty Ltd
Website:	www.jadestone-energy.com.au
Telephone:	+ 61 8 9486 6600
Control:	Jadestone Energy
Telephone:	+ 61 8 9486 6611
Email:	Stag-OIM@jadestone-energy.com.au
Pilotage:	Compulsory
Pilot Boarding Ground:	20° 15.00'S, 116° 15.00'E
Communication	
Call up, emergencies:	VHF Channel 16
Operator / Pilots:	VHF Channel 10
Notice of ETA:	24, 48, 72, 96 hours

Van Gogh (Ningaloo Vision) WA (21° 24' 12S, 114° 5' 18E) UN/LOCODE: AU VGH	
Paper charts:	Aus 328, 744
AusENC cells:	AU422114, AU322113, AU230110
Security Regulated Offshore Facility:	Yes
Operator:	Santos
Website:	www.santos.com
Telephone:	+61 8 6218 7138
Email:	offshore.vangogh.coordinator@santos.com
Pilots:	Supplied by Santos (above)
FPSO Marine & Safety Supervisor email:	Offshore.ningaloovision.marinesup@santos.com
Pilotage:	Compulsory
Pilot Boarding Ground:	21° 38'S 114°15'E unless otherwise advised if operational conditions require
Communication	
Call up, emergencies:	VHF Channel 16
Operator / Pilots:	VHF Channel 67
Notice of ETA:	Refer 72, 48, 24 and 12 hours prior to arrival. Email Van Gogh Coordinator
More information:	Terminal Handbook

Varanus Island, WA (20° 39' 01S, 115° 34' 55E) UN/LOCODE: AU VAR	
Paper chart:	Aus 62
AusENC cells:	AU421115, AU230110
Security Regulated Port:	Yes
Operator:	Santos
Website:	www.santos.com
Email:	Offshore.varanus.fieldsup@santos.com
Telephone:	+61 8 6218 7600
Fax:	+61 8 6218 7618
Pilotage:	Compulsory
Pilot Boarding Ground:	20° 40.00'S, 115° 40.00'E
Communication	
Call up, emergencies:	VHF Channel 16
Operator / Pilots:	VHF Channel 74
Notice of ETA:	96 hours

To accompany Australian Notice to Mariners 1145/2019



Block for chart Aus 51

© Commonwealth of Australia 2019

(173.5 x 221.5mm)
(119.9)