



18 October 2019

Edition 21

AUSTRALIAN NOTICES TO MARINERS

Notices 1079 - 1127

Published fortnightly by the Australian Hydrographic Office



Australian Notices to Mariners are the authority for correcting charts and publications published by the Australian Hydrographic Office covering Australia, Papua New Guinea, Solomon Islands, Australian Antarctic Territory and Timor-Leste.

Commodore F.T. FREEMAN RAN
Hydrographer of Australia

SECTIONS.

- I. **Australian Notices to Mariners, including blocks and notes.**
- II. **Hydrographic Reports.**
- III. **Navigational Warnings.**

SUPPLEMENTS.

- I. **Tracings**
- II. **Cumulative List of Australian Notices to Mariners.**
- III. **Cumulative List of Temporary and Preliminary Australian Notices to Mariners.**
- IV. **Temporary and Preliminary Notices in force.**
- V. **Amendments to Admiralty List of Lights and Fog Signals (Vol K), Radio Signals (NP 281(2), 282, 283(2), 285, 286(4)) and Sailing Directions (NP 9, 13, 14, 15, 33, 34, 35, 36, 39, 44, 51, 60, 61, 62, 100, 136).**

© Commonwealth of Australia 2019

This work is copyright. Apart from any use permitted under the Copyright Act 1968, no part may be reproduced by any process, adapted, communicated or commercially exploited without prior written permission from The Commonwealth represented by the Australian Hydrographic Office.

IMPORTANT NOTICE

This edition of Notices to Mariners includes all significant information affecting AHO products which the AHO has become aware of since the last edition. All reasonable efforts have been made to ensure the accuracy and completeness of the information, including third party information, on which these updates are based. The AHO regards third parties from which it receives information as reliable, however the AHO cannot verify all such information and errors may therefore exist. The AHO does not accept liability for errors in third party information.

GENERAL INSTRUCTIONS

The substance of these notices should be inserted on the charts affected.

Bearings are referred to the true compass and are reckoned clockwise from North; those relating to lights are given as seen by an observer from seaward.

Positions quoted in notices relate to WGS84 which is the horizontal datum for all charts produced by the Australian Hydrographic Office.

The range quoted for a light is its nominal range.

Depths are with reference to the chart datum of each chart. Heights are above mean high water springs or mean higher high water, as appropriate.

The capital letter (P) or (T) after the number of any notice denotes a preliminary or temporary notice respectively, which are contained separately at the end of the permanent notices.

REPORTING OF DANGERS

Mariners are particularly requested to notify the AUSTRALIAN HYDROGRAPHIC OFFICE, Locked Bag 8801 Wollongong, NSW 2500 (Fax 02-4223 6599, e-mail datacentre@hydro.gov.au or, alternatively by filling in and submitting the [Hydrographic Notes](#) forms located on the web site – www.hydro.gov.au), immediately on the discovery of new dangers or suspected dangers to navigation. For changes or defects in aids to navigation notify AusSAR (Fax 02-6230 6868 or email rccaus@amsa.gov.au).

AUTHORISED USE

Copies of Australian notices are available free of charge from the Australian Hydrographic Office (AHO) website (www.hydro.gov.au) and through the eNotices (email) service (www.hydro.gov.au/enotices/enotices.htm).

Individual Notices may be copied for the purpose of inserting Notice substance on official charts and publications. Paper copies may be printed by chart agents and distributed to customers on a cost recovery basis. Participating chart agents are listed on the AHO website as providing a 'Paper Notices to Mariners' service (www.hydro.gov.au/webapps/jsp/agents/agents-list.jsp). Copies of the notices may not be sold for profit without prior written agreement.

NUMERICAL INDEX OF NOTICES TO MARINERS

Edition No 21

Notices	Aus Chart, INT Chart, ENC Cell, AHP, BA Pubs
1079	Aus 132, 243, 301, 664, 701, 756, 757, 758, 759, PNG 515, 664
1080	Aus 66, 67, 280, 281, 739, 740, 741, 751
1081	Aus 817, 818
1082	Aus 242, 490, 817, 818, 4635, INT 635
1083	Aus 4
1084	Aus 814
1085	Aus 700
1086	Aus 391
1087	Aus 513, 514, 516, 517, 4621, INT 621
1088	Aus 64, 743
1089	Aus 118, 335, 336, 337, 755
1090	Aus 81
1091	Aus 32
1092	Aus 137
1093	Aus 600, INT 9036
1094	Aus 357
1095	Aus 173
1096	Aus 173, 174
1097(T)	Aus 263
1098(T)	Aus 245, 246, 247, 271, 272, 819
1099(T)	Aus 244, 245, 271
1100(T)	Aus 245, 271
1101(T)	Aus 245
1102(T)	Aus 244, 245
1103(T)	Aus 245, 246, 819
1104(T)	Aus 245, 246
1105(T)	Aus 701
1106(T)	Aus 301
1107(T)	Aus 301, 701
1108(T)	Aus 4, 701
1109(T)	Aus 4
1110(T)	PNG 628
1111(T)	Aus 299
1112(T)	Aus 326, 739, 4722, INT 722
1113(T)	Aus 59
1114(T)	Aus 57, 327, 741
1115(T)	Aus 116, 335, 336, 756, 757
1116(T)	Aus 328, 329, 744
1117(T)	Aus 69
1118(P)	Aus 336
1119(T)	Aus 336, 758
1120(T)	Aus 112, 754, 4725, 4726, INT 725, 726
1121(T)	Aus 328, 329, 742, 744
1122(T)	Aus 4708, 4723, INT 708, 723
1123(T)	Aus 130, 137
1124(T)	Aus 349, 787
1125(T)	Aus 143, 158
1126(T)	Aus 143, 155
1127(T)	Aus 178

NUMERICAL INDEX OF CHARTS AFFECTED

Edition No 21

Aus Chart	Notices
Aus 4	1083, 1108(T), 1109(T)
Aus 32	1091
Aus 57	1114(T)
Aus 59	1113(T)
Aus 64	1088
Aus 66	1080
Aus 67	1080
Aus 69	1117(T)
Aus 81	1090
Aus 112	1120(T)
Aus 116	1115(T)
Aus 118	1089
Aus 130	1123(T)
Aus 132	1079
Aus 137	1092, 1123(T)
Aus 143	1125(T), 1126(T)
Aus 155	1126(T)
Aus 158	1125(T)
Aus 173	1095, 1096
Aus 174	1096
Aus 178	1127(T)
Aus 242	1082
Aus 243	1079
Aus 244	1099(T), 1102(T)
Aus 245	1098(T), 1099(T), 1100(T), 1101(T), 1102(T), 1103(T), 1104(T)
Aus 246	1098(T), 1103(T), 1104(T)
Aus 247	1098(T)
Aus 263	1097(T)
Aus 271	1098(T), 1099(T), 1100(T)
Aus 272	1098(T)
Aus 280	1080
Aus 281	1080
Aus 299	1111(T)
Aus 301	1079, 1106(T), 1107(T)
Aus 326	1112(T)
Aus 327	1114(T)
Aus 328	1116(T), 1121(T)
Aus 329	1116(T), 1121(T)
Aus 335	1089, 1115(T)
Aus 336	1089, 1115(T), 1118(P), 1119(T)
Aus 337	1089
Aus 349	1124(T)
Aus 357	1094
Aus 391	1086
Aus 490	1082
Aus 513	1087
Aus 514	1087
Aus 516	1087
Aus 517	1087
Aus 600	1093
Aus 664	1079
Aus 700	1085
Aus 701	1079, 1105(T), 1107(T), 1108(T)
Aus 739	1080, 1112(T)

Aus Chart	Notices
Aus 740	1080
Aus 741	1080, 1114(T)
Aus 742	1121(T)
Aus 743	1088
Aus 744	1116(T), 1121(T)
Aus 751	1080
Aus 754	1120(T)
Aus 755	1089
Aus 756	1079, 1115(T)
Aus 757	1079, 1115(T)
Aus 758	1079, 1119(T)
Aus 759	1079
Aus 787	1124(T)
Aus 814	1084
Aus 817	1081, 1082
Aus 818	1081, 1082
Aus 819	1098(T), 1103(T)
Aus 4621	1087
Aus 4635	1082
Aus 4708	1122(T)
Aus 4722	1112(T)
Aus 4723	1122(T)
Aus 4725	1120(T)
Aus 4726	1120(T)
PNG 515	1079
PNG 628	1110(T)
PNG 664	1079

INT Chart	Notices
INT 9036	1093
INT 621	1087
INT 635	1082
INT 708	1122(T)
INT 722	1112(T)
INT 723	1122(T)
INT 725	1120(T)
INT 726	1120(T)

1079 AUSTRALIA - Products - New Charts, New Editions, Withdrawn Charts

Australian Hydrographic Office

New Charts

<i>Chart</i>	<i>Title and Geographical limits</i>	<i>Scale</i>	<i>Publication Date</i>	<i>Remarks</i>
PNG 515	Papua New Guinea - North East Coast - Woodlark Island to Trobriand Islands including Egum Atoll 8° 34'·90 S – 9° 28'·00 S 151° 11'·00 E – 152° 35'·45 E	1:150 000	18 October 2019	Adoption of Papua New Guinea chart numbering. Replaces Aus 515. General updating throughout.
PNG 664	Papua New Guinea - Admiralty Islands - Kumuli Islands 2° 18'·3 S – 2° 36'·0 S 147° 09'·0 E – 147° 36'·9 E	1:50 000	18 October 2019	Adoption of Papua New Guinea chart numbering. Replaces Aus 664. General updating throughout.

New Electronic Navigation Chart (Aus ENC)

<i>Cell Name</i>	<i>Title</i>	<i>Publication Date</i>	<i>Remarks</i>
NIL			

New Editions and Withdrawn Charts

<i>Chart</i>	<i>Title</i>	<i>Scale</i>	<i>Publication Date</i>	<i>Remarks</i>
Aus 132 (Edition 3)	Australia - South Coast - South Australia - Approaches to Port Augusta Plans: Snapper Reach to Port Augusta Port Augusta Wharves	1:37 500 1:20 000 1:7 500	18 October 2019	New edition with general updating throughout; including latest bathymetric data. Chart Aus 132 Edition 2 dated 24 August 2018 is now superseded and must be withdrawn from use.
Aus 301 (Edition 4)	Australia - North Coast - Queensland - Booby Island to Archer River	1:300 000	18 October 2019	New edition with general updating throughout. Chart Aus 301 Edition 3 dated 7 November 2014 is now superseded and must be withdrawn from use.

Australian National Tide Tables 2020

<i>AHP No</i>	<i>Title</i>	<i>Recommended retail price (incl GST)</i>	<i>Remarks</i>
AHP11	Australian National Tides Tables 2020	\$64.90	Paper Australian National Tides Tables 2020 for Australia, Antarctica, Papua New Guinea, Solomon Islands and Timor-Leste. Provides tidal information for 2020. Available from accredited chart distribution agents.

Charts withdrawn

<i>Chart</i>	<i>Remarks</i>
Aus 515	On publication of new chart PNG 515
Aus 664	On publication of new chart PNG 664

1079 AUSTRALIA - Products - New Charts, New Editions, Withdrawn Charts
Charts withdrawn without replacement

<i>Chart</i>	<i>Title</i>	<i>Scale</i>	<i>Publication Date</i>
Aus 243 Edition 2	Australia - East Coast - Queensland - Approaches to Bundaberg	1:50 000	6 January 2006
Aus 701 Edition 2	Australia - North Coast - Queensland - Vrilya Point to Duyfken Point	1:150 000	13 February 2009
Aus 756 Edition 3	Australia - South West Coast - Western Australia - Cape Naturaliste to Cape Leeuwin	1:150 000	16 January 2009
Aus 757 Edition 3	Australia - South Coast - Western Australia - Cape Leeuwin to Point D'Entrecasteaux	1:150 000	16 January 2009
Aus 758 Edition 3	Australia - South Coast - Western Australia - Point D'Entrecasteaux to Point Hillier	1:150 000	16 January 2009
Aus 759 Edition 2	Australia - South Coast - Western Australia - Point Hillier to Bald Island	1:150 000	16 January 2009

Chart permanently withdrawn

Charts listed above as withdrawn no longer meet chart carriage requirements and should be marked as "superseded" and replaced with the new chart/ new edition listed prior to passage through the area covered by the new chart.

When placing orders with a chart agent between notice of forthcoming edition and its publication, mariners should advise whether their order pertains to the current edition or the new edition.

For further details refer to the AHO website at www.hydro.gov.au for new edition and new chart stock arrival information.

1080 AUSTRALIA - Products - New Charts and New Editions to be published shortly
Australian Hydrographic Office

New Charts to be published shortly

<i>Chart</i>	<i>Title</i>	<i>Scale</i>	<i>Expected Publication Date</i>	<i>Remarks</i>
NIL				

New Editions to be published shortly

<i>Chart</i>	<i>Title</i>	<i>Scale</i>	<i>Expected Publication Date</i>	<i>Remarks</i>
NIL				

Charts to be withdrawn without replacement 29 November 2019

<i>Chart</i>	<i>Title</i>	<i>Scale</i>	<i>Publication Date</i>
Aus 280 Edition 5	Australia - East Coast - Queensland - Plans in Queensland (Sheet 3) Plans: Magpie Reef to Eden Reef Flinders Group	1:75 000 1:50 000	22 February 2019
Aus 281 Edition 3	Australia - East Coast - Queensland - First Three Mile Opening to Cape Direction	1:75 000	22 February 2019
Aus 739 Edition 3	Australia - North West Coast - Western Australia - Bedout Islet to Port Hedland	1:150 000	15 January 2010
Aus 740 Edition 3	Australia - North West Coast - Western Australia - Port Hedland to Port Walcott Inset: Depuch Island Anchorage	1:150 000 1:20 000	15 January 2010
Aus 741 Edition 3	Australia - North West Coast - Western Australia - Approaches to Dampier Archipelago	1:150 000	6 November 2015
Aus 751 Edition 2	Australia - West Coast - Western Australia - Houtman Abrolhos and Geelvink Channel	1:150 000	29 June 2012

Charts withdrawn without replacement 12 December 2019

<i>Chart</i>	<i>Title</i>	<i>Scale</i>	<i>Publication Date</i>
Aus 66 Edition 2	Australia - North West Coast - Western Australia - Barrow Island - Town Point	1:10 000	30 January 2015
Aus 67 Edition 1	Australia - North West Coast - Western Australia - Barrow Island - Wapet Landing	1:7 500	2 November 2012

1081 AUSTRALIA - QUEENSLAND - Bundaberg - Chart withdrawn; chart limits; light buoys; ZOC diagram
Australian Hydrographic Office

Note: position of existing chart notes may vary on certain charts.

Aus 817 [818/2019]

Insert	magenta limits with legend <i>Aus 242</i> in SE corner, between	24° 46'.67 S	152° 23'.80 E
		24° 46'.67 S	152° 25'.52 E
		24° 45'.00 S	152° 25'.52 E
		24° 45'.00 S	152° 23'.80 E
	magenta legend, <i>ENC (see Note)</i>	24° 37'.8 S	152° 32'.0 E
	special spherical light buoy, <i>Fl(5)Y.20s</i> , without topmark	24° 40'.25 S	152° 30'.02 E
	spar light buoy, <i>Q.Y.</i> , without topmark	24° 47'.94 S	152° 28'.27 E
	spar light buoy, <i>Q.Y.</i> , without topmark	24° 48'.31 S	152° 28'.77 E
	spar buoy, without topmark	24° 50'.40 S	152° 29'.00 E
	spar buoy, without topmark	24° 52'.99 S	152° 29'.67 E
	accompanying ZOC diagram	25° 43'.0 S	152° 45'.5 E
	accompanying note	25° 56'.0 S	152° 36'.0 E
Delete	magenta limits with legend <i>Aus 243</i> , centred on	24° 45'.0 S	152° 32'.0 E

Aus 818 [951/2018]

Insert	magenta limits with legend <i>Aus 242</i> in SW corner, between	24° 46'.30 S	152° 25'.52 E
		24° 45'.00 S	152° 25'.52 E
		24° 45'.00 S	152° 22'.60 E
		24° 46'.00 S	152° 22'.60 E
		24° 46'.00 S	152° 21'.40 E
		24° 46'.30 S	152° 21'.40 E
	magenta legend, <i>ENC (see Note)</i>	24° 37'.2 S	152° 32'.0 E
	special spherical light buoy, <i>Fl(5)Y.20s</i> , without topmark	24° 40'.25 S	152° 30'.02 E
	accompanying note	24° 42'.7 S	152° 10'.0 E
	accompanying ZOC diagram	24° 43'.0 S	152° 01'.0 E
Delete	magenta limits with legend <i>Aus 243</i> , centred on	24° 38'.0 S	152° 30'.0 E

1082 AUSTRALIA - QUEENSLAND - Bundaberg - South Head - Light range amended
Australian Maritime Safety Authority Final ATH 25/2019

Aus 242 (Port Bundaberg) [995/2019]

Amend	light range to <i>15M</i>	24° 45'.50 S	152° 24'.77 E
-------	---------------------------	--------------	---------------

Aus 490 [583/2019]

Amend	light range to <i>15M</i>	24° 45'.5 S	152° 24'.8 E
-------	---------------------------	-------------	--------------

Aus 817 [1081/2019]

Amend	light range to <i>15M</i>	24° 45'.5 S	152° 24'.8 E
-------	---------------------------	-------------	--------------

Aus 818 [1081/2019]

Amend	light range to <i>15M</i>	24° 45'.5 S	152° 24'.8 E
-------	---------------------------	-------------	--------------

Aus 4635 (INT 635) [583/2019]

Amend	light range to <i>15M</i>	24° 45'.5 S	152° 24'.8 E
-------	---------------------------	-------------	--------------

1083 AUSTRALIA - QUEENSLAND - Duyfken Point - Light sectors
Australian Hydrographic Office

Aus 4 [692/2019]

Insert	light sector, <i>W 290° - 175° (115°)</i> , emanating from light	12° 34'.15 S	141° 35'.98 E
Delete	obscured light sector with legend, <i>Obscd</i> , emanating from light	12° 34'.2 S	141° 36'.0 E

1084 AUSTRALIA - QUEENSLAND - Palm Beach - Fish haven

Former Notice - 553(T)/2019 is cancelled
Maritime Safety Queensland

Aus 814 [689/2019]

Insert	fish haven with minimum depth, 1 _g m, centred on	28° 06'.45 S	153° 28'.24 E
Delete	depth, 3 _g m	28° 06'.5 S	153° 28'.2 E

1085 AUSTRALIA - QUEENSLAND - Vrilya Point to Duyfken Point - Chart withdrawn

Australian Hydrographic Office

Aus 700 [696/2019]

Delete	magenta legend, Adjoining Chart Aus 701, in S border	11° 15'.8 S	141° 37'.5 E
--------	--	-------------	--------------

1086 PAPUA NEW GUINEA - Kumuli Islands - Chart name

Australian Hydrographic Office

Aus 391 [1072/2018]

Amend	legend to PNG 664	1° 51'.2 S	148° 24'.0 E
	legend to PNG 664	2° 35'.7 S	147° 36'.0 E

1087 PAPUA NEW GUINEA - Woodlark Island to Trobriand Islands - Chart name

Australian Hydrographic Office

Aus 513 [584/2019]

Amend	legend to <i>Adjoining Chart PNG 515</i> in N border	9° 23'.0 S	151° 50'.0 E
-------	--	------------	--------------

Aus 514 [135/2017]

Amend	legend to <i>Adjoining Chart PNG 515</i> in W border	9° 10'.0 S	152° 18'.6 E
-------	--	------------	--------------

Aus 516 [385/2016]

Amend	legend to <i>Adjoining Chart PNG 515</i> in E border	8° 45'.0 S	151° 26'.8 E
-------	--	------------	--------------

Aus 517 [385/2016]

Amend	legend to <i>Adjoining Chart PNG 515</i> in E border	9° 05'.0 S	151° 24'.8 E
-------	--	------------	--------------

Aus 4621 (INT 621) [1000/2019]

Amend	legend to PNG 515	8° 38'.5 S	152° 30'.0 E
-------	-------------------	------------	--------------

1088 AUSTRALIA - WESTERN AUSTRALIA - Ashburton - Depths

Precision Hydrographic Services

Aus 64 [939/2019]

Insert	depth, 9 _g m, enclosed by contour	21° 35'.55 S	115° 03'.00 E
--------	--	--------------	---------------

Replace	depth, 12 _g m, with depth, 13 _g m	21° 31'.1 S	115° 02'.9 E
---------	---	-------------	--------------

Aus 743 [939/2019]

Insert	depth, 9 _g m	21° 35'.55 S	115° 03'.00 E
--------	-------------------------	--------------	---------------

Delete	depth, 9 _g m	21° 35'.6 S	115° 02'.9 E
--------	-------------------------	-------------	--------------

1089 AUSTRALIA - WESTERN AUSTRALIA - Cape Naturaliste to Investigator Island - Charts withdrawn
Australian Hydrographic Office

Note: position of existing chart notes may vary on certain charts.

Aus 118 [650/2019]			
Insert	depth, 52m	35° 11'.31 S	117° 50'.84 E
	depth, 71m	35° 12'.03 S	117° 50'.10 E
Aus 335 [268/2019]			
Insert	accompanying ZOC diagram	33° 54'.0 S	115° 25'.0 E
	accompanying block	34° 20'.3 S	115° 05'.9 E
Delete	magenta limits, with legends Aus 756, centred on	33° 50'.0 S	114° 55'.0 E
	magenta limits, with legend Aus 757, centred on	34° 40'.0 S	115° 22'.0 E
	magenta limits, with legend Aus 758, centred on	35° 08'.0 S	115° 53'.0 E
Aus 336 [159/2019]			
Insert	magenta limits, with legend <i>Aus 118</i> in SW corner, between	35° 18'.70 S	118° 14'.91 E
		35° 18'.70 S	117° 36'.27 E
		34° 52'.23 S	117° 36'.27 E
		34° 52'.23 S	118° 14'.91 E
	accompanying ZOC diagram	34° 21'.0 S	116° 45'.0 E
	accompanying block	34° 23'.0 S	115° 15'.0 E
	depth, 66m	35° 13'.24 S	117° 45'.52 E
Delete	magenta limits, with legend Aus 757, centred on	34° 38'.0 S	115° 38'.0 E
	magenta limits, with legend Aus 759, centred on	35° 05'.0 S	117° 40'.0 E
	magenta limits, with legends Aus 758, centred on	35° 10'.0 S	116° 27'.0 E
	depth, 62m	35° 12'.8 S	117° 45'.0 E
Aus 337 [703/2016]			
Insert	magenta limits, with legend <i>Aus 118</i> in NE corner, between	35° 18'.70 S	117° 50'.70 E
		35° 18'.70 S	118° 27'.21 E
		34° 52'.23 S	118° 27'.21 E
		34° 52'.23 S	117° 50'.70 E
	accompanying ZOC diagram	33° 55'.0 S	119° 14'.0 E
Delete	note, PROCLAIMED FISHING ZONES	34° 12'.2 S	118° 40'.0 E
	proclaimed fishing zone	34° 16'.5 S	119° 33'.0 E
	proclaimed fishing zone	34° 23'.8 S	119° 27'.0 E
	proclaimed fishing zone	34° 27'.5 S	119° 19'.5 E
	proclaimed fishing zone	34° 30'.3 S	119° 11'.6 E
	proclaimed fishing zone	34° 33'.8 S	118° 48'.4 E
	proclaimed fishing zone	34° 42'.7 S	118° 41'.6 E
	proclaimed fishing zone	34° 46'.8 S	118° 29'.0 E
	proclaimed fishing zone	34° 56'.8 S	118° 16'.4 E
	magenta limits, with legend Aus 759, centred on	35° 03'.0 S	118° 20'.0 E
	proclaimed fishing zone	35° 07'.0 S	117° 59'.4 E
Aus 337 (Bremer Bay) [703/2016]			
Delete	proclaimed fishing zone	34° 23'.8 S	119° 26'.2 E
Aus 755 [1021/2018]			
Delete	magenta legend, Adjoining Chart Aus 756, in S border	33° 39'.9 S	114° 52'.5 E
1090 AUSTRALIA - WESTERN AUSTRALIA - Geraldton - Light			
UKHO			
Aus 81 (Geraldton) [NE 4/10/2019]			
Amend	light to 2F.Bu.25m (vert)	28° 46'.65 S	114° 36'.04 E
1091 AUSTRALIA - WESTERN AUSTRALIA - Wyndham Wharf - Lit mooring buoy			
CGL Wyndham Port			
Aus 32 (Approaches to Wyndham Wharf) [1045/2019]			
Insert	lit yellow cylindrical mooring buoy, Fl.Y.3s	15° 25'.222 S	128° 06'.748 E

1092 AUSTRALIA - SOUTH AUSTRALIA - Port Adelaide - No3 Dock - Beacon

Department of Planning, Transport and Infrastructure SA Notice 36/2019

Aus 137 [705/2019]

Delete beacon 34° 49'.85 S 138° 30'.58 E

1093 SOUTHERN OCEAN - Antarctica - Mawson - West Arm - Bollard

Australian Antarctic Division

Aus 600 (INT 9036) (Horseshoe Harbour) [164/2019]Insert fixed point with legend, *Bollard* 67° 35'.948 S 062° 51'.741 E**1094 AUSTRALIA - VICTORIA - Ninety Mile Beach - Well**

Hibiscus Petroleum

Aus 357 [1006/2019]Insert depth, 37m, enclosed by danger circle, with legend *Well* 38° 12'.42 S 147° 37'.16 E**1095 AUSTRALIA - TASMANIA - Bruny Island - Turners Hill - Radio tower**

D Davey

Aus 173 [166/2019]Insert radio tower, with legend (*R Lts*) 43° 19'.02 S 147° 16'.52 E**1096 AUSTRALIA - TASMANIA - D'Entrecasteaux Channel - Piersons Point to Kellys Point - Port Limit**

Tasports

Aus 173 [1095/2019]Insert magenta dashed line with legend *Hobart Port Limit*, between 43° 03'.11 S 147° 20'.65 E
43° 03'.84 S 147° 21'.47 EDelete magenta dashed line with legend, between 43° 03'.2 S 147° 20'.6 E
43° 03'.8 S 147° 21'.2 E**Aus 174 (North West Bay) [592/2019]**Insert magenta dashed line with legend *Hobart Port Limit*, between 43° 03'.106 S 147° 20'.654 E
43° 03'.835 S 147° 21'.469 EDelete magenta dashed line with legend, between 43° 03'.18 S 147° 20'.57 E
43° 03'.83 S 147° 21'.19 E

1097(T)/2019 AUSTRALIA - QUEENSLAND - Cairns - Trinity Inlet - Harbour works

Maritime Safety Queensland

A barge and support vessels are conducting pile driving and construction works in area bounded by the following positions:

16° 55'.42 S 145° 46'.86 E
 16° 55'.43 S 145° 46'.92 E
 16° 55'.82 S 145° 46'.84 E
 16° 55'.81 S 145° 46'.78 E.

An exclusion zone exists in the area and only vessels involved in the works, QWPS and Government vessels are permitted in the area.

Mariners are advised to navigate with caution in the area.

Chart temporarily affected - Aus 263

1098(T)/2019 AUSTRALIA - QUEENSLAND - Gladstone - Rodds Harbour to Worthington Island - Scientific instruments

Maritime Safety Queensland Notice 437(T)/2019

Special light buoys, *Fl. Y. 6s*, exist in the following positions:

23° 54'.99 S 151° 21'.57 E
 23° 48'.29 S 151° 12'.47 E
 23° 47'.73 S 151° 14'.31 E
 23° 47'.03 S 151° 18'.39 E
 23° 46'.05 S 151° 10'.09 E
 23° 42'.87 S 151° 08'.57 E.

Chart temporarily affected - Aus 245 - Aus 246 - Aus 247 - Aus 271 - Aus 272 - Aus 819

1099(T)/2019 AUSTRALIA - QUEENSLAND - Gladstone - Clinton Wharves - Harbour works completed

Former Notice - 68(T)/2017 is cancelled

Maritime Safety Queensland

Cancel this notice on receipt.

Chart formerly affected - Aus 244 - Aus 245 - Aus 271

1100(T)/2019 AUSTRALIA - QUEENSLAND - Gladstone - Calliope River - Harbour works completed

Former Notice - 568(T)/2016 is cancelled

Maritime Safety Queensland

Cancel this notice on receipt.

Chart formerly affected - Aus 245 - Aus 271

1101(T)/2019 AUSTRALIA - QUEENSLAND - Gladstone - North Channel - Shoaling removed

Former Notice - 291(T)/2017 is cancelled

Maritime Safety Queensland

Cancel this notice on receipt.

Chart formerly affected - Aus 245

1102(T)/2019 AUSTRALIA - QUEENSLAND - Gladstone - Barney Point - Harbour works completed

Former Notice - 656(T)/2019 is cancelled

Maritime Safety Queensland

Cancel this notice on receipt.

Chart formerly affected - Aus 244 - Aus 245

1103(T)/2019 AUSTRALIA - QUEENSLAND - Gladstone - Scientific instruments recovered

Former Notice - 579(T)/2014 is cancelled
Maritime Safety Queensland

Cancel this notice on receipt.

Chart formerly affected - Aus 245 - Aus 246 - Aus 819

1104(T)/2019 AUSTRALIA - QUEENSLAND - Gladstone Harbour - Scientific instruments recovered

Former Notice - 784(T)/2018 is cancelled
Maritime Safety Queensland

Cancel this notice on receipt.

Chart formerly affected - Aus 245 - Aus 246

1105(T)/2019 AUSTRALIA - QUEENSLAND - Skardon River - Shoaling charted

Former Notice - 443(P)/2019 is cancelled
Precision Hydrographic Services

Cancel this notice on receipt.

Chart formerly affected - Aus 701

1106(T)/2019 AUSTRALIA - QUEENSLAND - Skardon River - Light buoy unlit westwards

Maritime Safety Queensland Notice 251(T)/2019

The special light buoy, *F(5)Y.20s* (11° 44'.71 S 141° 50'.21 E), is unlit.

Chart temporarily affected - Aus 301

1107(T)/2019 AUSTRALIA - QUEENSLAND - Skardon River - Light buoy unlit westwards

Former Notice - 721(T)/2019 is cancelled
Maritime Safety Queensland Notice 251(T)/2019

Cancel this notice on receipt.

Chart formerly affected - Aus 301 - Aus 701

1108(T)/2019 AUSTRALIA - QUEENSLAND - Weipa - Shoaling charted

Former Notice - 643(P)/2018 is cancelled
Maritime Safety Queensland

Cancel this notice on receipt.

Chart formerly affected - Aus 4 - Aus 701

1109(T)/2019 AUSTRALIA - QUEENSLAND - Weipa - South Channel - Light beacon restored

Former Notice - 33(T)/2018 is cancelled
Maritime Safety Queensland

Cancel this notice on receipt.

Chart formerly affected - Aus 4

1110(T)/2019 PAPUA NEW GUINEA - Oreore Channel - Light buoy off station

National Maritime Safety Authority PNG Coastal Navigation Warning 39/2019

The port lateral light buoy, *Q.R* (10° 13'.68 S 150° 52'.78 E), is off station.

Chart temporarily affected - PNG 628

1111(T)/2019 AUSTRALIA - TORRES STRAIT - Ellis Channel - Hovell Bar - Light buoy off station
Maritime Safety Queensland Notice 443(T)/2019

The starboard light buoy, *Fl.G.2-5s No1* (10° 33'.95 S 142° 15'.38 E), is off station.

Chart temporarily affected - Aus 299

1112(T)/2019 AUSTRALIA - WESTERN AUSTRALIA - Bedout Islet - Drill rig northwestwards moved
Former Notice - 796(T)/2019 is cancelled
MODU *Noble Tom Prosser*

Cancel this notice on receipt.

Chart formerly affected - Aus 326 - Aus 739 - Aus 4722 (INT 722)

1113(T)/2019 AUSTRALIA - WESTERN AUSTRALIA - Dampier - Pluto Channel - Light buoy established
Pilbara Ports Authority Notice D15(T)/2019

A special pillar light buoy, *Fl.Y.3s P18*, with topmark exists in position 20° 35'.90 S 116° 45'.00 E.

Chart temporarily affected - Aus 59

1114(T)/2019 AUSTRALIA - WESTERN AUSTRALIA - Dampier Archipelago - Legendre Island - Heavy vessel lift operations completed
Former Notice - 1068(T)/2019 is cancelled
Department of Transport WA

Cancel this notice on receipt.

Chart formerly affected - Aus 57 - Aus 327 - Aus 741

1115(T)/2019 AUSTRALIA - WESTERN AUSTRALIA - Flinders Bay - Shoaling charted
Former Notice - 476(P)/2016 is cancelled
LADS Flight

Cancel this notice on receipt.

Chart formerly affected - Aus 116 - Aus 335 - Aus 336 - Aus 756 - Aus 757

1116(T)/2019 AUSTRALIA - WESTERN AUSTRALIA - Muiron Islands - Subsea operations completed
Former Notice - 503(T)/2019 is cancelled
Santos

Cancel this notice on receipt.

Chart formerly affected - Aus 328 - Aus 329 - Aus 744

1117(T)/2019 AUSTRALIA - WESTERN AUSTRALIA - Onslow - Beadon Bay - Harbour works

Department of Transport WA Notice 119/2019

Works associated with the installation of piles are in progress in Beadon Bay and Beadon Creek in the vicinity of the following positions:

21° 37'.00 S 115° 07'.49 E
 21° 37'.60 S 115° 07'.77 E
 21° 38'.20 S 115° 08'.01 E
 21° 38'.31 S 115° 07'.99 E
 21° 38'.57 S 115° 07'.90 E.

A temporary buoy will mark each location.

A barge and support vessels are on site and the barge will monitor VHF Ch 69.

Mariners are advised to navigate with caution in the area.

Chart temporarily affected - Aus 69**1118(P)/2019 AUSTRALIA - WESTERN AUSTRALIA - Point D'Entrecasteaux to Point Nuyts - Shoaling**

LADS Flight

Latest survey shows shoaler depths than those charted may exist in an area bounded by the coast and the following positions:

34° 50'.71 S 116° 08'.52 E
 35° 01'.54 S 116° 10'.54 E
 35° 03'.52 S 116° 37'.62 E.

Mariners are advised to navigate with caution in the area.

Charts will be updated in due course.

Chart which will be affected - Aus 336**1119(T)/2019 AUSTRALIA - WESTERN AUSTRALIA - Point D'Entrecasteaux to Point Nuyts - Shoaling***Former Notice - 1157(P)/2018 is cancelled*

LADS Flight

Cancel this notice on receipt.

Chart formerly affected - Aus 336 - Aus 758**1120(T)/2019 AUSTRALIA - WESTERN AUSTRALIA - Rottneest Island - Military exercise**

Department of Defence

The Western Australia Exercise Area (WAXA) will be activated 22 October to 1 November 2019 for a Military Exercise.

This exercise is to practice coordinated submarine search and rescue operations.

As part of the Exercise, surface vessels will be conducting operations with submarine rescue vehicles and remotely operated vehicles in an area bounded by the following positions:

31° 40'.0 S 115° 00'.0 E
 32° 00'.0 S 115° 00'.0 E
 32° 00'.0 S 115° 40'.0 E
 31° 40'.0 S 115° 40'.0 E.

Vessels navigating near the area are advised not to approach within 1M so as not to interfere with underwater operations and to navigate with additional caution due to increased exercise related traffic.

Mariners are advised to monitor VHF Ch 16 and ensure their AIS is operating as they may be requested to alter course to facilitate exercise operations.

Chart temporarily affected - Aus 112 - Aus 754 - Aus 4725 (INT 725) - Aus 4726 (INT 726)

1121(T)/2019 AUSTRALIA - WESTERN AUSTRALIA - Thevenard Island - Subsea operations northwestwards Santos

On or about 29 October 2019, MV *Skandi Singapore* will be conducting subsea operations in areas bounded by the following positions:

20° 36'.53 S 114° 54'.37 E
 20° 36'.53 S 115° 07'.21 E
 20° 26'.84 S 115° 07'.21 E
 20° 26'.84 S 114° 54'.37 E;
 and
 21° 20'.96 S 114° 04'.39 E
 21° 20'.96 S 114° 04'.94 E
 21° 20'.20 S 114° 04'.94 E
 21° 20'.20 S 114° 04'.39 E.

Chart temporarily affected - Aus 328 - Aus 329 - Aus 742 - Aus 744

1122(T)/2019 INDIAN OCEAN - Gascoyne Plain - Light buoy restored

Former Notice - 753(T)/2018 is cancelled
 Australian Bureau of Meteorology

Cancel this notice on receipt.

Chart formerly affected - Aus 4708 (INT 708) - Aus 4723 (INT 723)

1123(T)/2019 AUSTRALIA - SOUTH AUSTRALIA - Port Adelaide - Outer Harbor - Light beacon destroyed

Department of Planning, Transport and Infrastructure SA Notice 33(T)/2019

The port lateral light beacon, *Fl.R.2s No22* (34° 45'.77 S 138° 29'.62 E), has been destroyed; a special light buoy, Q, exists in situ.

Chart temporarily affected - Aus 130 - Aus 137

1124(T)/2019 AUSTRALIA - VICTORIA - Port Campbell - Survey operations southwards

Fugro

Vessel *Vos Shine*, with a 300m towed array, is conducting survey operations in an area bounded by the following positions:

39° 00'.13 S 142° 38'.68 E
 38° 51'.85 S 142° 52'.09 E
 38° 51'.33 S 142° 58'.29 E
 39° 03'.29 S 143° 03'.34 E
 39° 16'.72 S 142° 53'.99 E
 39° 14'.14 S 142° 48'.06 E.

The vessel will display appropriate lights and shapes.

Mariners are advised to navigate with caution in the area. 500m clearance is requested.

Chart temporarily affected - Aus 349 - Aus 787

1125(T)/2019 AUSTRALIA - VICTORIA - Port Phillip - Martha Point - Light buoy off station

Parks Victoria Notice 243(T)/2019

The special light buoy, *Fl(3)Y.10s R1* (38° 16'.47 S 144° 58'.36 E), is off station.

Chart temporarily affected - Aus 143 - Aus 158

1126(T)/2019 AUSTRALIA - VICTORIA - Port Phillip - Sandringham - Light beacon unlit

Former Notice - 630(T)/2019 is cancelled

Parks Victoria Notice 121(T)/2019, 248(T)/2019

The starboard lateral light beacon, *Fl(2)G.5s 5m 4M* (37° 56'.48 S 144° 59'.56 E), is unlit; a starboard lateral light buoy, *Fl(2)G.5s*, exists in position 37° 56'.51 S 144° 59'.53 E.

Chart temporarily affected - Aus 143 - Aus 155

1127(T)/2019 AUSTRALIA - TASMANIA - King Island - Grassy Harbour - Harbour works

Marine and Safety Tasmania Notice M170/2019

Works associated with the reconstruction of Fishermans Wharf are in progress.

Mariners are advised to navigate with caution in the area.

Chart temporarily affected - Aus 178

HYDROGRAPHIC REPORTS

<i>Locality</i>	<i>Report</i>	<i>Ship/Authority</i>	<i>Observer</i>
TAS- Bruny Island	Radio tower	SV <i>Windclimber</i>	D Davey

III

NAVIGATION WARNINGS

The Australian Hydrographic Office will no longer compile Section III of the Australian Notices to Mariners. For the most up to date navigation warnings please refer to:

AMSA Navigation Warnings

<http://amsa.gov.au/search-and-rescue/distress-and-safety-comms/msi/msi-email/index.asp>

New Zealand Notices to Mariners (Navarea XIV warnings)

<http://www.linz.govt.nz/sea/maritime-safety/notices-mariners>

To accompany Australian Notice to Mariners 1081/2019

ELECTRONIC NAVIGATIONAL CHART (ENC)

Larger scale ENC content exists in this area. When using electronic navigation systems, certain vessels (e.g. restricted by depth or size) may benefit from the additional level of detail shown in the largest scale ENC product available.

Note for chart Aus 817

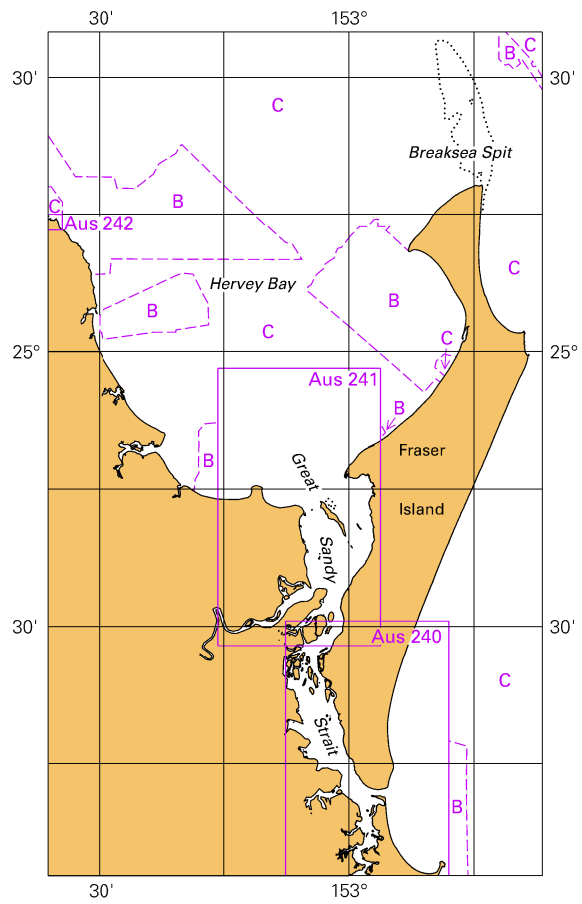
To accompany Australian Notice to Mariners 1081/2019

ELECTRONIC NAVIGATIONAL CHART (ENC)

Larger scale ENC content exists in this area. When using electronic navigation systems, certain vessels (e.g. restricted by depth or size) may benefit from the additional level of detail shown in the largest scale ENC product available.

Note for chart Aus 818

To accompany Australian Notice to Mariners 1081/2019

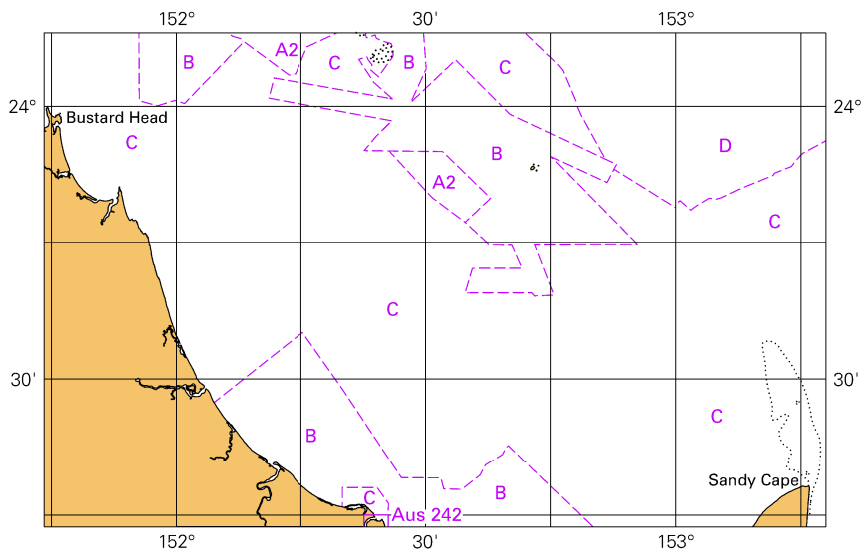


© Commonwealth of Australia 2019

Block for chart Aus 817

(111.5 x 65.4mm)

To accompany Australian Notice to Mariners 1081/2019

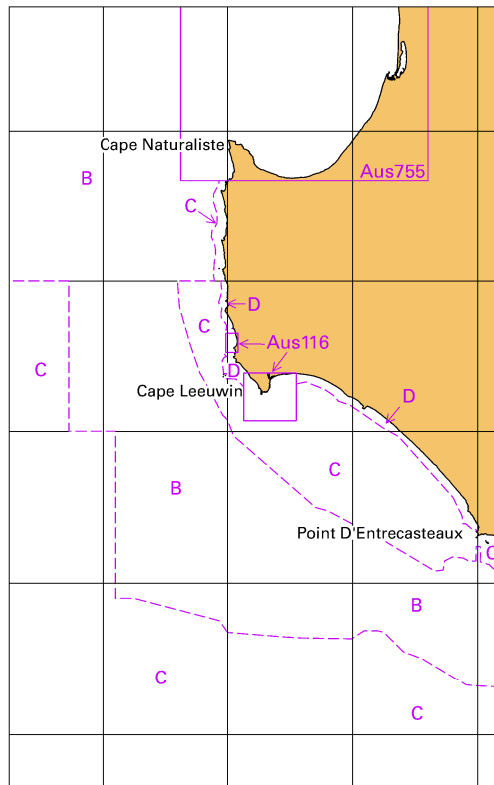


© Commonwealth of Australia 2019

Block for chart Aus 818

(103.3mm x 65.3mm)

To accompany Australian Notice to Mariners 1089/2019

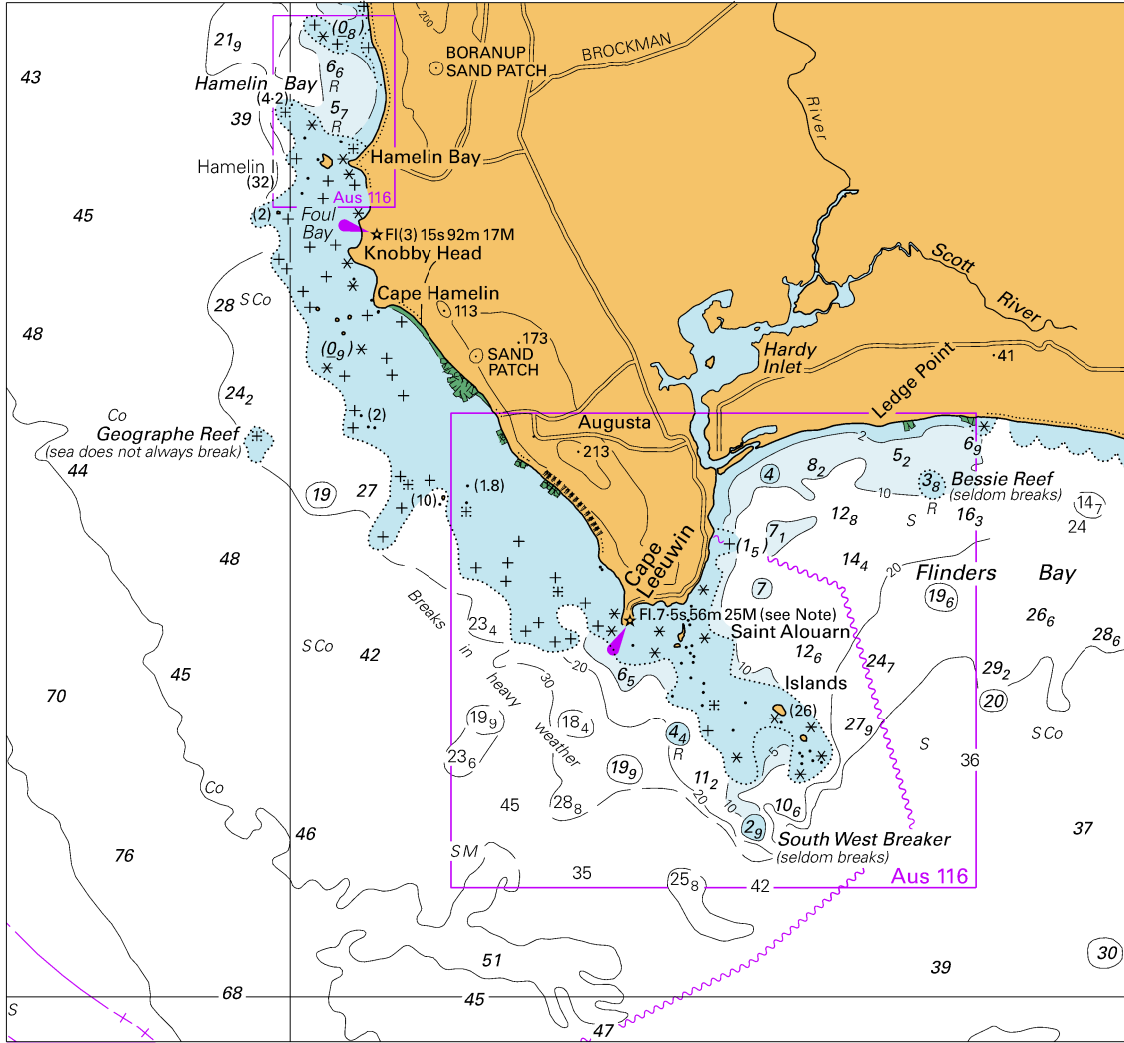


© Commonwealth of Australia 2019

Block for chart Aus 335

(65.3 x 103.3mm)

To accompany Australian Notice to Mariners 1089/2019

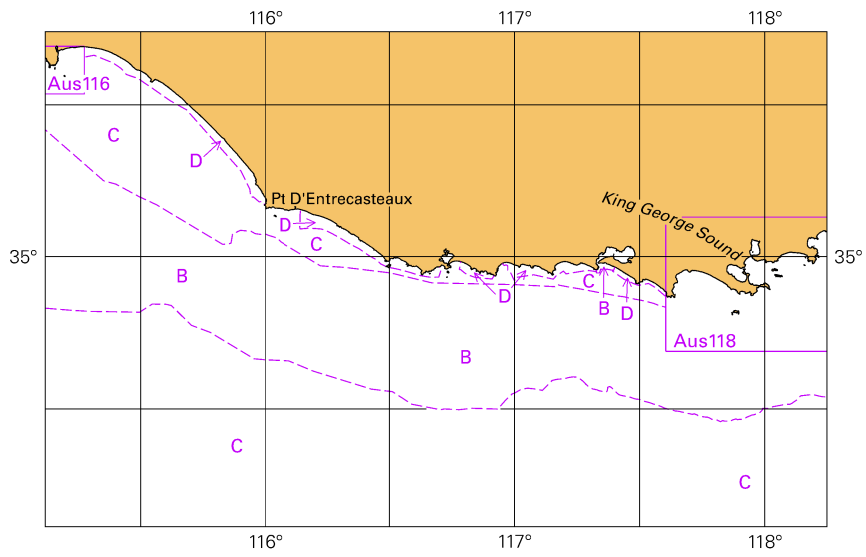


Block for chart Aus 335

© Commonwealth of Australia 2019

(148.0 x 137.5mm)

To accompany Australian Notice to Mariners 1089/2019

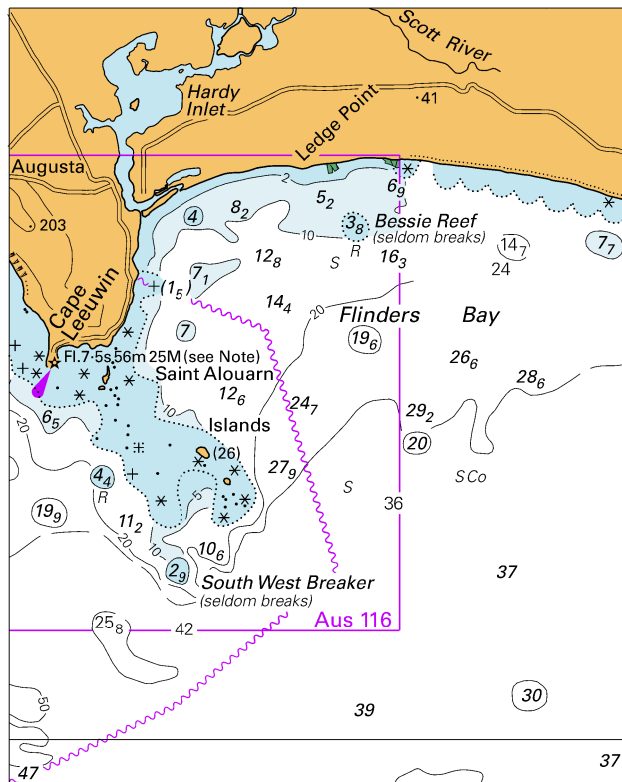


© Commonwealth of Australia 2019

Block for chart Aus 336

(103.3 x 65.3mm)

To accompany Australian Notice to Mariners 1089/2019



© Commonwealth of Australia 2019

Block for chart Aus 336

(82.1 x 102.6mm)

To accompany Australian Notice to Mariners 1089/2019

