



23 August 2019

Edition 17

# AUSTRALIAN NOTICES TO MARINERS

**Notices 860 - 924**

Published fortnightly by the Australian Hydrographic Office



Australian Notices to Mariners are the authority for correcting charts and publications published by the Australian Hydrographic Office covering Australia, Papua New Guinea, Solomon Islands, Australian Antarctic Territory and Timor-Leste.

Commodore F.T. FREEMAN RAN  
*Hydrographer of Australia*

---

## SECTIONS.

- I. **Australian Notices to Mariners, including blocks and notes.**
- II. **Hydrographic Reports.**
- III. **Navigational Warnings.**

## SUPPLEMENTS.

- I. **Tracings**
- II. **Cumulative List of Australian Notices to Mariners.**
- III. **Cumulative List of Temporary and Preliminary Australian Notices to Mariners.**
- IV. **Temporary and Preliminary Notices in force.**
- V. **Amendments to Admiralty List of Lights and Fog Signals (Vol K), Radio Signals (NP 281(2), 282, 283(2), 285, 286(4)) and Sailing Directions (NP 9, 13, 14, 15, 33, 34, 35, 36, 39, 44, 51, 60, 61, 62, 100, 136).**

---

© Commonwealth of Australia 2019

This work is copyright. Apart from any use permitted under the Copyright Act 1968, no part may be reproduced by any process, adapted, communicated or commercially exploited without prior written permission from The Commonwealth represented by the Australian Hydrographic Office.

## IMPORTANT NOTICE

This edition of Notices to Mariners includes all significant information affecting AHO products which the AHO has become aware of since the last edition. All reasonable efforts have been made to ensure the accuracy and completeness of the information, including third party information, on which these updates are based. The AHO regards third parties from which it receives information as reliable, however the AHO cannot verify all such information and errors may therefore exist. The AHO does not accept liability for errors in third party information.

---

## GENERAL INSTRUCTIONS

The substance of these notices should be inserted on the charts affected.

Bearings are referred to the true compass and are reckoned clockwise from North; those relating to lights are given as seen by an observer from seaward.

Positions quoted in notices relate to WGS84 which is the horizontal datum for all charts produced by the Australian Hydrographic Office.

The range quoted for a light is its nominal range.

Depths are with reference to the chart datum of each chart. Heights are above mean high water springs or mean higher high water, as appropriate.

The capital letter (P) or (T) after the number of any notice denotes a preliminary or temporary notice respectively, which are contained separately at the end of the permanent notices.

---

## REPORTING OF DANGERS

Mariners are particularly requested to notify the AUSTRALIAN HYDROGRAPHIC OFFICE, Locked Bag 8801 Wollongong, NSW 2500 (Fax 02-4223 6599, e-mail [datacentre@hydro.gov.au](mailto:datacentre@hydro.gov.au) or, alternatively by filling in and submitting the [Hydrographic Notes](#) forms located on the web site – [www.hydro.gov.au](http://www.hydro.gov.au)), immediately on the discovery of new dangers or suspected dangers to navigation. For changes or defects in aids to navigation notify AusSAR (Fax 02-6230 6868 or email [rccaus@amsa.gov.au](mailto:rccaus@amsa.gov.au)).

---

## AUTHORISED USE

Copies of Australian notices are available free of charge from the Australian Hydrographic Office (AHO) website ([www.hydro.gov.au](http://www.hydro.gov.au)) and through the eNotices (email) service ([www.hydro.gov.au/enotices/enotices.htm](http://www.hydro.gov.au/enotices/enotices.htm)).

Individual Notices may be copied for the purpose of inserting Notice substance on official charts and publications. Paper copies may be printed by chart agents and distributed to customers on a cost recovery basis. Participating chart agents are listed on the AHO website as providing a 'Paper Notices to Mariners' service ([www.hydro.gov.au/webapps/jsp/agents/agents-list.jsp](http://www.hydro.gov.au/webapps/jsp/agents/agents-list.jsp)). Copies of the notices may not be sold for profit without prior written agreement.

# NUMERICAL INDEX OF NOTICES TO MARINERS

## Edition No 17

Notices	Aus Chart, INT Chart, ENC Cell, AHP, BA Pubs
860	Aus 68, 222, 677, 679, 684, PNG 677, 679, 684
861	Aus 192, 243, 280, 281, 680, 683, 701, 739, 740, 741, 751, 756, 757, 758, 759
862	Aus 809
863	Aus 256, 257, 827
864	Aus 258, 829
865	Aus 270, 833
866	Aus 265
867	Aus 701
868	Aus 397, 399
869	Aus 545, 554, 680
870	Aus 670
871	PNG 674
872	Aus 293, 299
873	Aus 24, 27, 28
874	Aus 309, 310, 311, 313, 315, 316, 320, 322, 325, 328, 4721, 4722, 4723, 4725, INT 721, 722, 723, 725
875	Aus 65, 66
876	Aus 119, 762
877	Aus 113
878	Aus 328, 329
879	Aus 53
880	Aus 742, 743
881	Aus 745
882	Aus 126, 780
883	Aus 349
884	Aus 157
885	Aus 140
886	Aus 802
887	Aus 176
888	Aus 168
889(T)	Aus 222
890(T)	Aus 238
891(T)	Aus 237, 238
892(T)	Aus 262
893(T)	Aus 240
894(T)	Aus 240, 815, 817
895(T)	Aus 235, 236
896(T)	Aus 367, 490, 820
897(T)	Aus 256, 827
898(T)	Aus 248, 367, 490, 820
899(T)	Aus 256
900(T)	Aus 256, 257
901(T)	Aus 387, 388, 4622, INT 622
902(T)	Aus 545, 554, 679, 680
903(P)	Aus 545, 554, 680, PNG 679
904(T)	Aus 397, 399, 4604, 4622, INT 604, 622, PNG 684
905(T)	Aus 397, 399, 684, 4604, 4622, INT 604, 622
906(T)	Aus 674, 677
907(T)	Aus 545, 546, 554, 680, 4604, 4622, INT 604, 622
908(T)	Aus 23, 309, 316, 722
909(T)	Aus 23, 722
910(T)	Aus 328, 4723, 4725, INT 723, 725
911(T)	Aus 328, 4723, INT 723
912(T)	Aus 50, 51
913(T)	Aus 48, 319, 320, 322, 323, 325, 326, 327, 741, 4721, 4722, 4723, INT 721, 722, 723
914(T)	Aus 117
915(T)	Aus 754
916(T)	Aus 4725, INT 725
917(P)	Aus 32
918(T)	Aus 126, 347, 780
919(T)	Aus 127
920(T)	Aus 122
921(T)	Aus 349, 787, 4728, INT 728
922(T)	Aus 158
923(T)	Aus 143
924(T)	Aus 143



# NUMERICAL INDEX OF CHARTS AFFECTED

## Edition No 17

Aus Chart	Notices
Aus 23	908(T), 909(T)
Aus 24	873
Aus 27	873
Aus 28	873
Aus 32	917(P)
Aus 48	913(T)
Aus 50	912(T)
Aus 51	912(T)
Aus 53	879
Aus 65	875
Aus 66	875
Aus 68	860
Aus 113	877
Aus 117	914(T)
Aus 119	876
Aus 122	920(T)
Aus 126	882, 918(T)
Aus 127	919(T)
Aus 140	885
Aus 143	923(T), 924(T)
Aus 157	884
Aus 158	922(T)
Aus 168	888
Aus 176	887
Aus 192	861
Aus 222	860, 889(T)
Aus 235	895(T)
Aus 236	895(T)
Aus 237	891(T)
Aus 238	890(T), 891(T)
Aus 240	893(T), 894(T)
Aus 243	861
Aus 248	898(T)
Aus 256	863, 897(T), 899(T), 900(T)
Aus 257	863, 900(T)
Aus 258	864
Aus 262	892(T)
Aus 265	866
Aus 270	865
Aus 280	861
Aus 281	861
Aus 293	872
Aus 299	872
Aus 309	874, 908(T)
Aus 310	874
Aus 311	874
Aus 313	874
Aus 315	874
Aus 316	874, 908(T)
Aus 319	913(T)
Aus 320	874, 913(T)
Aus 322	874, 913(T)
Aus 323	913(T)
Aus 325	874, 913(T)

Aus Chart	Notices
Aus 326	913(T)
Aus 327	913(T)
Aus 328	874, 878, 910(T), 911(T)
Aus 329	878
Aus 347	918(T)
Aus 349	883, 921(T)
Aus 367	896(T), 898(T)
Aus 387	901(T)
Aus 388	901(T)
Aus 397	868, 904(T), 905(T)
Aus 399	868, 904(T), 905(T)
Aus 490	896(T), 898(T)
Aus 545	869, 902(T), 903(P), 907(T)
Aus 546	907(T)
Aus 554	869, 902(T), 903(P), 907(T)
Aus 670	870
Aus 674	906(T)
Aus 677	860, 906(T)
Aus 679	860, 902(T)
Aus 680	861, 869, 902(T), 903(P), 907(T)
Aus 683	861
Aus 684	860, 905(T)
Aus 701	861, 867
Aus 722	908(T), 909(T)
Aus 739	861
Aus 740	861
Aus 741	861, 913(T)
Aus 742	880
Aus 743	880
Aus 745	881
Aus 751	861
Aus 754	915(T)
Aus 756	861
Aus 757	861
Aus 758	861
Aus 759	861
Aus 762	876
Aus 780	882, 918(T)
Aus 787	921(T)
Aus 802	886
Aus 809	862
Aus 815	894(T)
Aus 817	894(T)
Aus 820	896(T), 898(T)
Aus 827	863, 897(T)
Aus 829	864
Aus 833	865
Aus 4604	904(T), 905(T), 907(T)
Aus 4622	901(T), 904(T), 905(T), 907(T)
Aus 4721	874, 913(T)
Aus 4722	874, 913(T)
Aus 4723	874, 910(T), 911(T), 913(T)
Aus 4725	874, 910(T), 916(T)
Aus 4728	921(T)

Aus Chart	Notices
PNG 674	<a href="#">871</a>
PNG 677	<a href="#">860</a>
PNG 679	<a href="#">860, 903(P)</a>
PNG 684	<a href="#">860, 904(T)</a>

INT Chart	Notices
INT 604	<a href="#">904(T), 905(T), 907(T)</a>
INT 622	<a href="#">901(T), 904(T), 905(T), 907(T)</a>
INT 721	<a href="#">874, 913(T)</a>
INT 722	<a href="#">874, 913(T)</a>
INT 723	<a href="#">874, 910(T), 911(T), 913(T)</a>
INT 725	<a href="#">874, 910(T), 916(T)</a>
INT 728	<a href="#">921(T)</a>

**860 AUSTRALIA - Products - New Charts, New Editions, Withdrawn Charts**

Australian Hydrographic Office

**New Charts**

<i>Chart</i>	<i>Title and Geographical limits</i>	<i>Scale</i>	<i>Publication Date</i>	<i>Remarks</i>
PNG 677	Papua New Guinea - New Britain - North Coast - Plans in New Britain (Sheet 1) Plans: Kimbe 5° 31'·95 S – 5° 33'·30 S 150° 08'·20 E – 150° 09'·97 E Bialla Harbour 5° 15'·83 S – 5° 19'·20 S 150° 56'·78 E – 151° 01'·20 E	1:5 000   1:12 500	23 August 2019	Adoption of Papua New Guinea chart numbering. Replaces Aus 677. General updating throughout; including new coastline, nav aids and wrecks. Produced with blue contours.
PNG 679	Papua New Guinea - New Britain - Duke of York Group 4° 04'·80 S – 4° 16'·32 S 152° 21'·00 E – 152° 34'·24 E Plan: Mioko Harbour 4° 11'·33 S – 4° 14'·40 S 152° 26'·00 E – 152° 30'·42 E	1:37 500   1:12 500	23 August 2019	Adoption of Papua New Guinea chart numbering. Replaces Aus 679. General updating throughout; including latest bathymetric data.
PNG 684	South Pacific Ocean - Plans on West Coast - Bougainville Island Plans: Approaches to Queen Carola Harbour 5° 05'·58 S – 5° 30'·00 S 154° 19'·48 E – 154° 37'·00 E Empress Augusta Bay 6° 11'·99 S – 6° 32'·25 S 154° 47'·59 E – 155° 14'·0 E Approaches to Torokina 6° 13'·75 S – 6° 17'·43 S 154° 58'·03 E – 155° 02'·50 E Buka Passage 5° 21'·97 S – 5° 32'·10 S 154° 35'·00 E – 154° 43'·50 E	1:150 000   1:75 000  1:37 500  1:37 500	23 August 2019	Adoption of Papua New Guinea chart numbering. Replaces Aus 684. General updating throughout; including latest bathymetric data.

**New Electronic Navigation Chart (Aus ENC)**

<i>Cell Name</i>	<i>Title</i>	<i>Publication Date</i>	<i>Remarks</i>
NIL			

**New Editions and Withdrawn Charts**

<i>Chart</i>	<i>Title</i>	<i>Scale</i>	<i>Publication Date</i>	<i>Remarks</i>
Aus 222 (Edition 4)	Australia - East Coast - New South Wales - Clarence River and Approaches Plan: Goodwood Island Wharf	1:15 000  1:6 000	23 August 2019	New edition with general updating throughout; including latest bathymetric data and updates to nav aids. <b>Chart Aus 222 Edition 3 dated 11 August 2017 is now superseded and must be withdrawn from use.</b>

**Charts withdrawn**

<i>Chart</i>	<i>Remarks</i>
Aus 677	On publication of new chart PNG 677
Aus 679	On publication of new chart PNG 679
Aus 684	On publication of new chart PNG 684

**Charts withdrawn without replacement**

<i>Chart</i>	<i>Title</i>	<i>Scale</i>	<i>Publication Date</i>
Aus 68	Australia - North West Coast - Western Australia -	1:50 000	8 March 2013
<b>Edition 1</b>	Approaches to Cape Preston		
	Inset: Cape Preston	1:10 000	

**Chart permanently withdrawn**

Charts listed above as withdrawn no longer meet chart carriage requirements and should be marked as "superseded" and replaced with the new chart/ new edition listed prior to passage through the area covered by the new chart.

When placing orders with a chart agent between notice of forthcoming edition and its publication, mariners should advise whether their order pertains to the current edition or the new edition.

For further details refer to the AHO website at [www.hydro.gov.au](http://www.hydro.gov.au) for new edition and new chart stock arrival information.



**861 AUSTRALIA - Products - New Charts and New Editions to be published shortly**

Australian Hydrographic Office

**New Charts to be published shortly**

<i>Chart</i>	<i>Title</i>	<i>Scale</i>	<i>Expected Publication Date</i>	<i>Remarks</i>
PNG 680	Papua New Guinea - New Britain - Approaches to Blanche Bay Plan: Simpson and Matupit Harbours	1:75 000  1:12 500	6 September 2019	Adoption of Papua New Guinea chart numbering. Replaces Aus 680. General updating throughout.
PNG 683	South Pacific Ocean - Plans on East Coast - Bougainville Island Plans: Approaches to Kieta Harbour and Anewa Bay Numa Numa Harbour Teop Harbour Kieta Harbour Anewa Bay	   1:50 000 1:37 500 1:25 000 1:15 000 1:10 000	6 September 2019	Adoption of Papua New Guinea chart numbering. Replaces Aus 683. General updating throughout.

**New Editions to be published shortly**

<i>Chart</i>	<i>Title</i>	<i>Scale</i>	<i>Expected Publication Date</i>	<i>Remarks</i>
Aus 192	Australia - East Coast - New South Wales - Twofold Bay Plan: Eden East Boyd Bay Wharves	1:25 000  1:7 500 1:7 500	6 September 2019	New edition with general updating throughout; including infrastructure and latest bathymetric data.

**Charts to be withdrawn**

<i>Chart</i>	<i>Remarks</i>
Aus 680	On publication of new chart PNG 680
Aus 683	On publication of new chart PNG 683

**Charts to be withdrawn without replacement 4 October 2019**

<i>Chart</i>	<i>Title</i>	<i>Scale</i>	<i>Publication Date</i>
Aus 243 <b>Edition 2</b>	Australia - East Coast - Queensland - Approaches to Bundaberg	1:50 000	6 January 2006
Aus 701 <b>Edition 2</b>	Australia - North Coast - Queensland - Vrilya Point to Duyfken Point	1:150 000	13 February 2009
Aus 756 <b>Edition 3</b>	Australia - South West Coast - Western Australia - Cape Naturaliste to Cape Leeuwin	1:150 000	16 January 2009
Aus 757 <b>Edition 3</b>	Australia - South Coast - Western Australia - Cape Leeuwin to Point D'Entrecasteaux	1:150 000	16 January 2009
Aus 758 <b>Edition 3</b>	Australia - South Coast - Western Australia - Point D'Entrecasteaux to Point Hillier	1:150 000	16 January 2009
Aus 759 <b>Edition 2</b>	Australia - South Coast - Western Australia - Point Hillier to Bald Island	1:150 000	16 January 2009

**861 AUSTRALIA - Products - New Charts and New Editions to be published shortly**
**Charts to be withdrawn without replacement 18 October 2019**

<i>Chart</i>	<i>Title</i>	<i>Scale</i>	<i>Publication Date</i>
Aus 280 <b>Edition 5</b>	Australia - East Coast - Queensland - Plans in Queensland (Sheet 3) Plans: Magpie Reef to Eden Reef Flinders Group	1:75 000 1:50 000	22 February 2019
Aus 281 <b>Edition 3</b>	Australia - East Coast - Queensland - First Three Mile Opening to Cape Direction	1:75 000	22 February 2019
Aus 751 <b>Edition 2</b>	Australia - West Coast - Western Australia - Houtman Abrolhos and Geelvink Channel	1:150 000	29 June 2012

**Charts withdrawn without replacement 29 November 2019**

<i>Chart</i>	<i>Title</i>	<i>Scale</i>	<i>Publication Date</i>
Aus 739 <b>Edition 3</b>	Australia - North West Coast - Western Australia - Bedout Islet to Port Hedland	1:150 000	15 January 2010
Aus 740 <b>Edition 3</b>	Australia - North West Coast - Western Australia - Port Hedland to Port Walcott Inset: Depuch Island Anchorage	1:150 000 1:20 000	15 January 2010
Aus 741 <b>Edition 3</b>	Australia - North West Coast - Western Australia - Approaches to Dampier Archipelago	1:150 000	6 November 2015

**862 AUSTRALIA - NEW SOUTH WALES - Moon Island - Fish haven northeastwards**

Subcon

**Aus 809 [51/2019]**

Insert	fish haven with minimum depth, 15m, centred on	33° 04'.34 S	151° 41'.96 E
--------	--	--------------	---------------

**863 AUSTRALIA - QUEENSLAND - Magnetic Island - Light buoys**

Former Notice - 828(T)/2018 is cancelled  
Maritime Safety Queensland

**Aus 256 [531/2019]**

Delete	light buoy	19° 07'.8 S	146° 52'.8 E
	light buoy	19° 08'.2 S	146° 55'.8 E

**Aus 257 [318/2019]**

Delete	light buoy	19° 15'.17 S	146° 51'.03 E
--------	------------	--------------	---------------

**Aus 827 [531/2019]**

Delete	light buoy	19° 08'.2 S	146° 55'.8 E
--------	------------	-------------	--------------

**864 AUSTRALIA - QUEENSLAND - Mourilyan - Anchorages**

Maritime Safety Queensland Notice 355/2019

**Aus 258 (Gladys Inlet to King Reefs) [1009/2018]**

Insert	anchor berth, desig MA1	17° 36'.72 S	146° 11'.41 E
	anchor berth, desig MA2	17° 37'.82 S	146° 11'.69 E

**Aus 829 [951/2018]**

Insert	anchor berth, desig MA1	17° 36'.72 S	146° 11'.41 E
	anchor berth, desig MA2	17° 37'.82 S	146° 11'.69 E

**865 AUSTRALIA - QUEENSLAND - Pipon Islets - Two-way route**

Australian Maritime Safety Authority

**Aus 270 (Cape Melville and Pipon Islets) [762/2019]**

Insert	magenta dashed line, between	14° 05'.60 S	144° 33'.69 E
		14° 10'.09 S	144° 35'.40 E
	magenta dashed line, between	14° 05'.60 S	144° 32'.26 E
		14° 09'.37 S	144° 33'.78 E
	two-way route arrows, centred on	14° 08'.0 S	144° 34'.1 E
Delete	magenta dashed line, between	14° 09'.4 S	144° 33'.8 E
		14° 10'.1 S	144° 35'.4 E

**Aus 833 [762/2019]**

Insert	magenta dashed line, between	13° 59'.11 S	144° 21'.56 E
		14° 04'.50 S	144° 33'.27 E
	magenta dashed line, between	14° 10'.09 S	144° 35'.40 E
		14° 01'.31 S	144° 23'.62 E
		14° 05'.20 S	144° 32'.10 E
		14° 09'.37 S	144° 33'.78 E
	two-way route arrows, centred on	14° 03'.5 S	144° 29'.7 E
Delete	magenta dashed line, between	13° 59'.1 S	144° 21'.6 E
		14° 01'.3 S	144° 23'.6 E
	magenta dashed line, between	14° 09'.4 S	144° 33'.8 E
		14° 10'.1 S	144° 35'.4 E

**866 AUSTRALIA - QUEENSLAND - Port Alma - Mooring buoy**

Maritime Safety Queensland Notice 358/2019

**Aus 265 (Port Alma) [523/2019]**

Insert	cylindrical mooring buoy	23° 35'.288 S	150° 51'.773 E
--------	--------------------------	---------------	----------------

**867 AUSTRALIA - QUEENSLAND - Skardon River - Mooring buoys; anchorages**

Transshipment Services Australia

**Aus 701 [530/2019]**

Insert	accompanying block	11° 45'.0 S	141° 51'.0 E
--------	--------------------	-------------	--------------

**868 PAPUA NEW GUINEA - Bougainville Island - Chart name**

Australian Hydrographic Office

**Aus 397 [342/2015]**

Amend	legend to PNG 684	4° 30'.9 S	154° 42'.4 E
	legend to PNG 684	5° 06'.0 S	154° 20'.7 E
	legend to PNG 684	5° 22'.3 S	154° 36'.1 E

**Aus 399 [899/2017]**

Amend	legend to PNG 684	5° 06'.0 S	154° 35'.7 E
	legend to PNG 684	5° 07'.0 S	155° 56'.4 E
	legend to PNG 684	5° 07'.2 S	155° 58'.9 E
	legend to PNG 684	5° 13'.3 S	155° 59'.7 E
	legend to PNG 684	5° 22'.4 S	154° 36'.1 E
	legend to PNG 684	6° 12'.4 S	154° 48'.8 E

**869 PAPUA NEW GUINEA - Duke of York Group - Chart name**

Australian Hydrographic Office

**Aus 545** [155/2019]

Amend legend to PNG 679

04° 04'.9 S 152° 21'.5 E

**Aus 554** [155/2019]

Amend legend to PNG 679

04° 04'.9 S 152° 33'.7 E

legend to PNG 679

04° 19'.3 S 152° 51'.9 E

**Aus 680** [155/2019]

Amend legend to PNG 679

04° 04'.9 S 152° 21'.3 E

**Aus 680 (Simpson and Matupit Harbours)** [155/2019]

Amend legend to PNG 679

04° 12'.08 S 152° 12'.31 E

**870 PAPUA NEW GUINEA - New Britain - Gasmata - Wreck**

Fugro LADS

**Aus 670** [1073/2018]

Replace wreck depth, 31m, with wreck depth, 35m

06° 16'.9 S 150° 19'.4 E

**871 PAPUA NEW GUINEA - New Britain - Kimbe - Light beacon withdrawn**

National Maritime Safety Authority PNG

**PNG 674** [NC 9/8/2019]

Delete light beacon

5° 32'.66 S 150° 09'.07 E

**872 AUSTRALIA - TORRES STRAIT - Madge Reef - Light buoy**

Maritime Safety Queensland

**Aus 293** [530/2019]

Insert special conical light buoy, Fl. Y. 2·5s, without topmark

10° 35'.062 S 142° 14'.542 E

Delete depth, 3,3m

10° 35'.04 S 142° 14'.58 E

light buoy

10° 35'.08 S 142° 14'.49 E

**Aus 299** [56/2019]

Insert special conical light buoy, Fl. Y. 2·5s, without topmark

10° 35'.062 S 142° 14'.542 E

Delete light buoy

10° 35'.08 S 142° 14'.49 E

**873 AUSTRALIA - NORTHERN TERRITORY - Darwin - Depths**

Surrich Hydrographics

**Aus 24** [214/2019]

Insert accompanying block

12° 29'.0 S 130° 49'.5 E

**Aus 27** [214/2019]

Insert accompanying block

12° 33'.0 S 130° 51'.3 E

**Aus 28** [474/2019]

Insert accompanying block

12° 30'.0 S 130° 53'.5 E

<b>874 AUSTRALIA - NORTHERN TERRITORY - WESTERN AUSTRALIA - Lynedoch Bank to Barrow Island - Scientific instruments</b>			
Australian Institute of Marine Science			
<b>Aus 309</b> [649/2019]			
Delete	depth, 10m, enclosed by danger circle with legend, ODAS	12° 17'.4 S	128° 28'.6 E
<b>Aus 310</b> [1075/2018]			
Insert	depth, 15m, enclosed by danger circle with legend, ODAS	9° 56'.37 S	130° 20'.95 E
<b>Aus 311</b> [265/2019]			
Delete	depth, 10m, enclosed by danger circle with legend, ODAS	11° 00'.0 S	128° 00'.0 E
	depth, 10m, enclosed by danger circle with legend, ODAS	9° 49'.0 S	127° 33'.2 E
<b>Aus 313</b> [1126/2018]			
Delete	depth, 10m, enclosed by danger circle with legend, ODAS	9° 49'.0 S	127° 33'.2 E
<b>Aus 315</b> [649/2019]			
Delete	depth, 10m, enclosed by danger circle with legend, ODAS	12° 17'.4 S	128° 28'.6 E
<b>Aus 316</b> [11/2019]			
Delete	depth, 10m, enclosed by danger circle with legend, ODAS	13° 36'.5 S	128° 58'.0 E
<b>Aus 320</b> [780/2019]			
Insert	depth, 15m, enclosed by danger circle with legend, ODAS	14° 14'.13 S	123° 09'.74 E
<b>Aus 322</b> [384/2019]			
Insert	depth, 15m, enclosed by danger circle with legend, ODAS	14° 14'.13 S	123° 09'.74 E
<b>Aus 325</b> [383/2019]			
Move	depth, 15m, enclosed by danger circle with legend, ODAS	17° 45'.7 S	119° 55'.3 E
	to	17° 45'.48 S	119° 54'.37 E
<b>Aus 328</b> [430/2019]			
Insert	depth, 15m, enclosed by danger circle with legend, ODAS	20° 45'.67 S	114° 45'.52 E
<b>Aus 4721 (INT 721)</b> [265/2019]			
Insert	depth, 15m, enclosed by danger circle with legend, ODAS	14° 14'.1 S	123° 09'.7 E
	depth, 15m, enclosed by danger circle with legend, ODAS	9° 56'.4 S	130° 20'.9 E
Delete	depth, 10m, enclosed by danger circle with legend, ODAS	11° 00'.0 S	128° 00'.0 E
	depth, 10m, enclosed by danger circle with legend, ODAS	12° 17'.4 S	128° 28'.6 E
	depth, 10m, enclosed by danger circle with legend, ODAS	13° 36'.5 S	128° 58'.0 E
	depth, 103m	14° 15'.4 S	123° 12'.3 E
	depth, 10m, enclosed by danger circle with legend, ODAS	9° 49'.0 S	127° 33'.2 E
<b>Aus 4722 (INT 722)</b> [704/2019]			
Insert	depth, 15m, enclosed by danger circle with legend, ODAS	14° 14'.1 S	123° 09'.7 E
Move	depth, 15m, enclosed by danger circle with legend, ODAS	17° 45'.7 S	119° 55'.3 E
	to	17° 45'.5 S	119° 54'.4 E
Delete	depth, 103m	14° 15'.4 S	123° 12'.3 E
<b>Aus 4723 (INT 723)</b> [777/2019]			
Insert	depth, 15m, enclosed by danger circle with legend, ODAS	20° 45'.7 S	114° 45'.5 E
<b>Aus 4725 (INT 725)</b> [476/2019]			
Insert	depth, 15m, enclosed by danger circle with legend, ODAS	20° 45'.7 S	114° 45'.5 E

**875 AUSTRALIA - WESTERN AUSTRALIA - Barrow Island - Town Point - Scientific instrument**

Port of Barrow Island Notice 02/2019

**Aus 65 [330/2019]**

Insert	special spherical light buoy, <i>Fl(5)Y.20s</i> , without topmark	20° 48'.82 S	115° 29'.88 E
--------	---	--------------	---------------

**Aus 66 [349/2018]**

Insert	special spherical light buoy, <i>Fl(5)Y.20s</i> , without topmark	20° 48'.82 S	115° 29'.88 E
--------	---	--------------	---------------

**876 AUSTRALIA - WESTERN AUSTRALIA - Esperance - Charley Island - Scientific instrument withdrawn**

CSIRO

**Aus 119 [60/2019]**

Delete	depth, 20m, enclosed by danger circle with legend, ODAS	33° 56'.0 S	121° 51'.0 E
--------	---	-------------	--------------

**Aus 762 [1128/2018]**

Delete	depth, 20m, enclosed by danger circle with legend, ODAS	33° 56'.0 S	121° 51'.0 E
--------	---	-------------	--------------

**877 AUSTRALIA - WESTERN AUSTRALIA - Fremantle - Inner Harbour - Berths**

Fremantle Ports Notice 2/2019

**Aus 113 [778/2019]**

Insert	berth desig, <i>CT4</i>	32° 02'.489 S	115° 44'.853 E
	berth desig, <i>CT1</i>	32° 02'.888 S	115° 44'.458 E

Amend	berth desig to <i>CT3</i>	32° 02'.62 S	115° 44'.73 E
	berth desig to <i>CT2</i>	32° 02'.75 S	115° 44'.60 E

Delete	berth desig, 10	32° 02'.46 S	115° 44'.89 E
	berth desig, 9	32° 02'.53 S	115° 44'.82 E
	berth desig, 7	32° 02'.69 S	115° 44'.66 E
	berth desig, 5	32° 02'.82 S	115° 44'.53 E
	berth desig, 4	32° 02'.94 S	115° 44'.42 E

**878 AUSTRALIA - WESTERN AUSTRALIA - Murion Islands - Pipeline northwestwards**

Woodside Energy Ltd

**Aus 328 [874/2019]**

Insert	supply pipeline, between	21° 31'.98 S	113° 51'.21 E
		21° 31'.25 S	113° 52'.14 E
		21° 30'.43 S	113° 52'.61 E

**Aus 329 [476/2019]**

Insert	supply pipeline, between	21° 31'.98 S	113° 51'.21 E
		21° 31'.25 S	113° 52'.14 E
		21° 30'.43 S	113° 52'.61 E

**879 AUSTRALIA - WESTERN AUSTRALIA - Port Hedland - Coxon Shoal - Light beacon eastwards**

Pilbara Ports Authority Notice PH 2/2019

**Aus 53 [704/2019]**

Delete	topmark	20° 03'.2 S	118° 32'.6 E
	light elevation, 10m	20° 03'.2 S	118° 32'.6 E

# **880 AUSTRALIA - WESTERN AUSTRALIA - Rosemary Island to Barrow Island - Chart limits; depths; ZOC diagram**

Australian Hydrographic Office

*Note:* the position of existing chart notes may vary on certain charts.

## **Aus 742 [330/2019]**

Insert	magenta limits, with legend <i>Aus 57</i> in NW corner, between	20° 17'.40 S	116° 38'.08 E
		20° 17'.40 S	116° 17'.40 E
		20° 44'.00 S	116° 17'.40 E
		20° 44'.00 S	116° 38'.08 E
	accompanying ZOC diagram	20° 09'.5 S	115° 09'.5 E
	depth, 7 <sub>g</sub> m, and extend contour NW to enclose	20° 38'.76 S	116° 27'.52 E
	accompanying note	20° 52'.9 S	116° 19'.0 E
Amend	magenta legend to <i>ENC (see Note)</i>	20° 32'.2 S	116° 02'.7 E
Delete	magenta limits, with legend <i>Aus 57</i> , centred on	20° 30'.0 S	116° 30'.0 E
	depth, 11 <sub>7</sub> m	20° 38'.5 S	116° 27'.5 E
	depth, 9 <sub>3</sub> m	20° 39'.0 S	116° 28'.0 E

## **Aus 743 [1080/2018]**

Insert	accompanying note	21° 28'.3 S	116° 08'.5 E
	accompanying ZOC diagram	21° 35'.0 S	116° 03'.0 E
Amend	magenta legend to <i>ENC (see Note)</i>	20° 59'.6 S	116° 02'.5 E

# **881 AUSTRALIA - WESTERN AUSTRALIA - Tantabiddi Passage - Scientific instrument**

Department of Transport WA Notice 88/2019

## **Aus 745 [476/2019]**

Insert	orange spherical light buoy, <i>Fl(5)Y.20s</i> , without topmark	21° 53'.62 S	113° 55'.72 E
--------	--	--------------	---------------

# **882 AUSTRALIA - SOUTH AUSTRALIA - Backstairs Passage - Submarine power cable**

Department of Planning, Transport and Infrastructure SA

## **Aus 126 (Backstairs Passage) [488/2018]**

Insert	submarine power cable, between	35° 44'.25 S	138° 01'.32 E
		35° 44'.04 S	138° 01'.47 E
		35° 43'.69 S	138° 01'.50 E
		35° 43'.26 S	138° 01'.72 E
		35° 38'.84 S	138° 05'.84 E
		35° 37'.97 S	138° 06'.91 E

## **Aus 780 [221/2019]**

Insert	submarine power cable, between	35° 44'.25 S	138° 01'.32 E
		35° 43'.26 S	138° 01'.72 E
		35° 38'.84 S	138° 05'.84 E
		35° 37'.97 S	138° 06'.91 E

# **883 AUSTRALIA - VICTORIA - Apollo Bay - Lights**

Colac Otway Shire

## **Aus 349 [268/2019]**

Insert	light, <i>Iso.12M</i>	38° 43'.04 S	143° 42'.59 E
	dashed line in a direction 197.5° for a distance of 2.1M, thence a continuous line for 2.8M, with legend <i>017.5°</i> , emanating from light	38° 43'.04 S	143° 42'.59 E
Amend	light to <i>Iso.WR.5-10M</i>	38° 43'.6 S	143° 42'.4 E
Delete	light sectors emanating from light	38° 43'.6 S	143° 42'.4 E

**884 AUSTRALIA - VICTORIA - Port Phillip - Point Henry - Beacon withdrawn**  
Victorian Regional Channels Authority Notice 184/2019

**Aus 157 [710/2019]**

Delete	beacon	38° 08'.03 S	144° 25'.64 E
--------	--------	--------------	---------------

**Aus 157 (Point Henry Pier) [710/2019]**

Delete	beacon	38° 08'.03 S	144° 25'.64 E
--------	--------	--------------	---------------

**885 AUSTRALIA - VICTORIA - Portland - Depths**  
Port of Portland

**Aus 140 [154/2018]**

Insert	accompanying block B	38° 16'.5 S	142° 02'.7 E
	accompanying block C	38° 20'.6 S	141° 38'.4 E

**Aus 140 (Portland) [154/2018]**

Insert	accompanying block A	38° 20'.8 S	141° 37'.0 E
--------	----------------------	-------------	--------------

**886 AUSTRALIA - BASS STRAIT - Hogan Island northwestwards - Wreck**  
Australian Hydrographic Office

**Aus 802 [268/2019]**

Replace	wreck depth, 51m, with wreck depth, 50m	39° 06'.5 S	146° 43'.8 E
---------	---	-------------	--------------

**887 AUSTRALIA - TASMANIA - Port Davey - Curtis Point to Bathurst Narrows - Rocks; anchoring prohibited limit**

A Boon , Parks and Wildlife Service Tasmania

**Aus 176 [543/2019]**

Insert	underwater rock enclosed by danger circle, with legend (1) Rep (2019)	43° 15'.180 S	145° 54'.980 E
	underwater rock enclosed by danger circle, with legend (1 <sub>2</sub> ) Rep (2019)	43° 20'.110 S	146° 03'.305 E

**Aus 176 (Bathurst Narrows) [543/2019]**

Insert	anchoring prohibited limit, between	43° 20'.897 S	146° 07'.154 E
		43° 20'.862 S	146° 07'.247 E

**888 AUSTRALIA - TASMANIA - River Tamar - Lone Pine Point to Tamar Island - Nav aids**  
Marine and Safety Tasmania

**Aus 168 [22/2019]**

Insert	port lateral topmark	41° 19'.982 S	147° 01'.072 E
--------	----------------------	---------------	----------------

**Aus 168 (Tamar Island to Launceston) [22/2019]**

Move	light beacon	41° 23'.44 S	147° 05'.59 E
	to	41° 23'.474 S	147° 05'.588 E



**889(T)/2019 AUSTRALIA - NEW SOUTH WALES - Clarence River - Harwood - Obstructions charted**

*Former Notice* - 43(T)/2015 is cancelled  
Port Authority of New South Wales

Cancel this notice on receipt.

**Chart formerly affected - Aus 222****890(T)/2019 AUSTRALIA - QUEENSLAND - Brisbane River - Hamilton Reach - Harbour works**

Maritime Safety Queensland Notice 375(T)/2019

The construction of a pontoon is being carried out by barges 'Steel Ranger' and 'Cobia' and support vessels. The barges and hazards will be lit.

Vessels will monitor VHF Ch13 and Ch16.

Mariners are advised to navigate with caution in the area.

**Chart temporarily affected - Aus 238****891(T)/2019 AUSTRALIA - QUEENSLAND - Brisbane River - Lytton Rocks Reach - Scientific instrument**

Maritime Safety Queensland Notice 383(T)/2019

A special light buoy, *Fl.Y.2.5s*, exists in position 27° 24'.58 S 153° 08'.82 E.

**Chart temporarily affected - Aus 237 - Aus 238****892(T)/2019 AUSTRALIA - QUEENSLAND - Cairns - Light beacon withdrawn**

Maritime Safety Queensland Notice 372(T)/2019

The light beacon, *Fl.G.4s C9*, has been temporarily withdrawn; a starboard lateral light buoy, *Fl.G.4s*, exists in situ.

**Chart temporarily affected - Aus 262****893(T)/2019 AUSTRALIA - QUEENSLAND - Great Sandy Strait - Stewart Island - Light beacon relit**

*Former Notice* - 785(T)/2018 is cancelled  
Maritime Safety Queensland

Cancel this notice on receipt.

**Chart formerly affected - Aus 240****894(T)/2019 AUSTRALIA - QUEENSLAND - Inskip Point - Light relit**

*Former Notice* - 1036(T)/2017 is cancelled  
Maritime Safety Queensland

Cancel this notice on receipt.

**Chart formerly affected - Aus 240 - Aus 815 - Aus 817****895(T)/2019 AUSTRALIA - QUEENSLAND - Moreton Bay - Spitfire Channel - Light buoy**

Maritime Safety Queensland Notice 365(T)/2019

A starboard lateral pillar light buoy, *Fl.G.2.5s*, exists in position 27° 02'.90 S 153° 16'.30 E.

**Chart temporarily affected - Aus 235 - Aus 236**

**896(T)/2019 AUSTRALIA - QUEENSLAND - Peaked Island - Search and rescue exercise northeastwards completed**

*Former Notice* - 667(T)/2017 is cancelled

Maritime Safety Queensland Notice 322(T)/2017

Cancel this notice on receipt.

**Chart formerly affected - Aus 367 - Aus 490 - Aus 820**

**897(T)/2019 AUSTRALIA - QUEENSLAND - Rattlesnake Island - Military exercise; live firing**

Maritime Safety Queensland Notice 373(T)/2019, 374(T)/2019

Military exercises including live firing activities will be conducted within a 5M radius of position 19° 02'.27 S 146° 36'.43 E from 19 August to 30 August 2019, and on 2 September 2019.

Mariners are advised to navigate with caution and keep well clear of the area.

**Chart temporarily affected - Aus 256 - Aus 827**

**898(T)/2019 AUSTRALIA - QUEENSLAND - Shoalwater Bay - Live firing**

Maritime Safety Queensland Notice 380(T)/2019

Live firing will be conducted in the marine component of the Shoalwater Bay training area during the period 6 September to 23 September 2019.

A marine danger area extends to all internal waters bounded by the following positions:

22° 33'.77 S 150° 32'.70 E

22° 33'.23 S 150° 35'.28 E

22° 38'.18 S 150° 43'.15 E

22° 40'.00 S 150° 38'.00 E.

All waters, creeks, beaches and other areas within the declared marine danger area are not available for access.

There will be a safe anchorage available at Freshwater, Port Clinton, West Water Port Clinton, South Arm Port Clinton, Pearl Bay, Island Head Creek and Supply Bay Townshend Island.

Mariners are advised to keep clear of this area throughout the above times.

**Chart temporarily affected - Aus 248 - Aus 367 - Aus 490 - Aus 820**

**899(T)/2019 AUSTRALIA - QUEENSLAND - Townsville - Sea Channel - Light beacon restored**

*Former Notice* - 1031(T)/2018 is cancelled

Maritime Safety Queensland

Cancel this notice on receipt.

**Chart formerly affected - Aus 256**

**900(T)/2019 AUSTRALIA - QUEENSLAND - Townsville - Beacon replacement works completed**

*Former Notice* - 556(T)/2019 is cancelled

Maritime Safety Queensland

Cancel this notice on receipt.

**Chart formerly affected - Aus 256 - Aus 257**

**901(T)/2019 PAPUA NEW GUINEA - Cape Croisilles - Light unlit**

National Maritime Safety Authority PNG Coastal Navigation Warning 32/2019

The light, *Fl(2)6s 22m 10M* (4° 50'.89 S 145° 48'.20 E), is unlit.

**Chart temporarily affected - Aus 387 - Aus 388 - Aus 4622 (INT 622)**

**902(T)/2019 PAPUA NEW GUINEA - Duke of York Island - Shoaling***Former Notice* - 181(P)/2019 is cancelled

LADS Flight

Cancel this notice on receipt.

**Chart formerly affected - Aus 545 - Aus 554 - Aus 679 - Aus 680****903(P)/2019 PAPUA NEW GUINEA - Duke of York Island - Shoaling**

LADS Flight

Latest survey shows shoaler depths than those charted may exist in an area bounded by the following positions:

4° 07'.43 S 152° 28'.17 E

4° 10'.10 S 152° 30'.20 E

4° 11'.35 S 152° 30'.07 E

4° 13'.66 S 152° 28'.38 E

4° 15'.11 S 152° 25'.69 E

4° 13'.13 S 152° 22'.60 E

4° 11'.41 S 152° 23'.70 E

4° 07'.06 S 152° 23'.88 E

4° 06'.29 S 152° 24'.62 E

4° 06'.17 S 152° 25'.41 E.

Mariners are advised to navigate with caution in the area.

Charts will be updated in due course.

**Chart which will be affected - Aus 545 - Aus 554 - Aus 680 - PNG 679****904(T)/2019 PAPUA NEW GUINEA - Madehas Island - Light unlit**

National Maritime Safety Authority PNG

The light, *Fl. 10s 137m 16M* (5° 27'.63 S 154° 38'.06 E), is unlit.**Chart temporarily affected - Aus 397 - Aus 399 - Aus 4604 (INT 604) - Aus 4622 (INT 622) - PNG 684****905(T)/2019 PAPUA NEW GUINEA - Madehas Island - Light unlit***Former Notice* - 495(T)/2019 is cancelled

National Maritime Safety Authority PNG

Cancel this notice on receipt.

**Chart formerly affected - Aus 397 - Aus 399 - Aus 684 - Aus 4604 (INT 604) - Aus 4622 (INT 622)****906(T)/2019 PAPUA NEW GUINEA - New Britain - Kimbe - Light beacon destroyed; obstruction charted***Former Notice* - 294(T)/2018 is cancelled

National Maritime Safety Authority PNG

Cancel this notice on receipt.

**Chart formerly affected - Aus 674 - Aus 677****907(T)/2019 PAPUA NEW GUINEA - Tavui Point to Elizabeth Reef - Lights relit***Former Notice* - 839(T)/2019 is cancelled

National Maritime Safety Authority PNG Coastal Navigation Warning 33/2019, 34/2019

Cancel this notice on receipt.

**Chart formerly affected - Aus 545 - Aus 546 - Aus 554 - Aus 680 - Aus 4604 (INT 604) - Aus 4622 (INT 622)**

**908(T)/2019 AUSTRALIA - NORTHERN TERRITORY - Beagle Gulf - Cable operations**

Fugro

Vessel *Vos Shine* is conducting submarine cable laying operations between the following positions:

11° 45'.34 S 130° 38'.45 E  
 11° 46'.00 S 130° 40'.00 E  
 11° 47'.50 S 130° 39'.65 E  
 11° 53'.00 S 130° 33'.50 E  
 12° 05'.40 S 130° 32'.70 E  
 12° 13'.50 S 130° 33'.60 E  
 12° 13'.99 S 130° 33'.42 E.

A buoy exists at the end point (12° 13'.99 S 130° 33'.42 E).

Mariners are advised to navigate with caution in the area.

**Chart temporarily affected - Aus 23 - Aus 309 - Aus 316 - Aus 722**

**909(T)/2019 AUSTRALIA - NORTHERN TERRITORY - Melville Island to Bathurst Island - Harbour works**

Department of Infrastructure, Planning and Logistics NT Notice 7/2019

Works associated with the installation of two ferry landings are in progress in the vicinity of positions 11° 45'.17 S 130° 38'.37 E and 11° 44'.75 S 130° 38'.45 E.

A barge will deploy anchors at each site.

Mariners are advised to navigate with caution in the area.

**Chart temporarily affected - Aus 23 - Aus 722**

**910(T)/2019 AUSTRALIA - WESTERN AUSTRALIA - Barrow Island - Subsea operations northwestwards**

Chevron Australia

Subsea operations are in progress in the vicinity of position 20° 34'.71 S 114° 46'.35 E.

Mariners are advised to navigate with caution in the area.

**Chart temporarily affected - Aus 328 - Aus 4723 (INT 723) - Aus 4725 (INT 725)**

**911(T)/2019 AUSTRALIA - WESTERN AUSTRALIA - Barrow Island - Subsea operations northwestwards**

Chevron Australia

Subsea operations are in progress in the vicinity of position 19° 51'.16 S 114° 30'.87 E.

Mariners are advised to navigate with caution in the area.

**Chart temporarily affected - Aus 328 - Aus 4723 (INT 723)**

**912(T)/2019 AUSTRALIA - WESTERN AUSTRALIA - Broome - Dredging operations**

Kimberley Ports Authority Notice 20/2019

The dredge *Niccolo Machavelli* and support vessels are conducting dredging operations in the Port of Broome (18° 00'.08 S 122° 13'.30 E).

A floating pipeline exists in the area which is connected to the dredge. A 250m exclusion zone exists around the dredge and pipeline. Vessels needing to pass the exclusion zone must contact Broome Port on VHF Ch 14 or Ch 16.

Mariners are advised to navigate with caution in the area.

**Chart temporarily affected - Aus 50 - Aus 51**

**913(T)/2019 AUSTRALIA - WESTERN AUSTRALIA - Browse Island to Rankin Bank - Drilling and survey operations completed**

*Former Notice* - 293(T)/2019 is cancelled  
Woodside Energy Ltd

Cancel this notice on receipt.

**Chart formerly affected - Aus 48 - Aus 319 - Aus 320 - Aus 322 - Aus 323 - Aus 325 - Aus 326 - Aus 327 - Aus 741 - Aus 4721 (INT 721) - Aus 4722 (INT 722) - Aus 4723 (INT 723)**

**914(T)/2019 AUSTRALIA - WESTERN AUSTRALIA - Cockburn Sound - Mangles Bay - Wreck**  
Department of Transport WA Notice 93/2019

A wreck marked by an isolated danger light buoy exists in position 32° 16'.22 S 115° 42'.80 E.

**Chart temporarily affected - Aus 117**

**915(T)/2019 AUSTRALIA - WESTERN AUSTRALIA - Perth - Scientific instruments westwards**  
*Former Notice* - 478(T)/2016 is cancelled  
CSIRO

Subsurface scientific instruments exist as follows:

<i>Position</i>	<i>Remarks</i>
31° 38'.60 S 115° 12'.20 E	20m below the surface
31° 43'.71 S 115° 01'.20 E	20m below the surface
31° 45'.91 S 114° 59'.60 E	300m below the surface
31° 59'.00 S 115° 13'.70 E	20m below the surface
31° 59'.38 S 115° 23'.13 E	20m below the surface
32° 00'.00 S 115° 25'.00 E	20m below the surface

**Chart temporarily affected - Aus 754**

**916(T)/2019 AUSTRALIA - WESTERN AUSTRALIA - Perth - Scientific instrument westwards removed**  
*Former Notice* - 670(T)/2019 is cancelled  
Australian Maritime Safety Authority

Cancel this notice on receipt.

**Chart formerly affected - Aus 4725 (INT 725)**

**917(P)/2019 AUSTRALIA - WESTERN AUSTRALIA - Wyndham - Shoaling**  
*Former Notice* - 846(P)/2019 is cancelled  
Department of Transport WA

Latest survey shows shoaler depths than those charted may exist within the approaches to Wyndham wharf, with least depths as follows:

<i>Position</i>	<i>Depth</i>
15° 18'.67 S 128° 05'.29 E	0.2m
15° 24'.81 S 128° 05'.73 E	-0.2m
15° 25'.62 S 128° 05'.61 E	0.0m

Mariners are advised to navigate with caution in the area.

**Chart which will be affected - Aus 32**

**918(T)/2019 AUSTRALIA - SOUTH AUSTRALIA - Backstairs Passage - Cable operations completed**  
*Former Notice* - 427(T)/2018 is cancelled  
Department of Planning, Transport and Infrastructure SA

Cancel this notice on receipt.

**Chart formerly affected - Aus 126 - Aus 347 - Aus 780**

**919(T)/2019 AUSTRALIA - SOUTH AUSTRALIA - Cape Jaffa - Marina closure***Former Notice - 173(T)/2018 is cancelled*

Department of Planning, Transport and Infrastructure SA Notice 30/2019

Mariners are advised that due to seasonal shoaling and seagrass wrack at the entrance to Cape Jaffa Marina (36° 56'.18 S 139° 41'.84 E) the marina is closed to all vessels.

Mariners are advised to navigate with caution in the area.

**Chart temporarily affected - Aus 127**

**920(T)/2019 AUSTRALIA - SOUTH AUSTRALIA - Thevenard - Harbour works**

Department of Planning, Transport and Infrastructure SA Notice 29/2019

Maintenance and construction operations on the Thevenard jetty are in progress (32° 08'.95 S 133° 38'.45 E).

A jack-up barge and support vessels are on site. An exclusion zone around the barge and floating plant will be marked with special and red buoys.

Vessels will display appropriate lights and shapes.

Mariners are advised to navigate with caution in the area.

**Chart temporarily affected - Aus 122**

**921(T)/2019 AUSTRALIA - VICTORIA - Peterborough - Drill rig southwestwards***Former Notice - 807(T)/2019 is cancelled*

Cooper Energy

On or about 31 August 2019, Drill rig *Ocean Monarch* will be conducting drilling operations in position 38° 46'.71 S 142° 36'.07 E.

**Chart temporarily affected - Aus 349 - Aus 787 - Aus 4728 (INT 728)**

**922(T)/2019 AUSTRALIA - VICTORIA - Port Phillip - Blairgowrie - Light beacon relit***Former Notice - 741(T)/2019 is cancelled*

Parks Victoria Notice 191/2019

Cancel this notice on receipt.

**Chart formerly affected - Aus 158**

**923(T)/2019 AUSTRALIA - VICTORIA - Port Phillip - Frankston - Pier damaged**

Parks Victoria 195(T)/2019

Frankston Pier (38° 08'.78 S 145° 06'.85 E) has been damaged and will be closed to all vessels until further notice.

Mariners are advised to navigate with caution in the area.

**Chart temporarily affected - Aus 143**

**924(T)/2019 AUSTRALIA - VICTORIA - Port Phillip - Paterson River - Light buoy relit northwestwards***Former Notice - 855(T)/2019 is cancelled*

Victorian Ports Corporation (Melbourne) Notice 196/2019

Cancel this notice on receipt.

**Chart formerly affected - Aus 143**

## HYDROGRAPHIC REPORTS

<i>Locality</i>	<i>Report</i>	<i>Ship/Authority</i>	<i>Observer</i>
TAS- Port Davey	Underwater rock; anchoring prohibited limit		A Boon

### III

#### **NAVIGATION WARNINGS**

The Australian Hydrographic Office will no longer compile Section III of the Australian Notices to Mariners. For the most up to date navigation warnings please refer to:

AMSA Navigation Warnings

<http://amsa.gov.au/search-and-rescue/distress-and-safety-comms/msi/msi-email/index.asp>

New Zealand Notices to Mariners (Navarea XIV warnings)

<http://www.linz.govt.nz/sea/maritime-safety/notices-mariners>



*To accompany Australian Notice to Mariners 880/2019*

ELECTRONIC NAVIGATIONAL CHART (ENC)

Larger scale ENC content exists in this area. When using electronic navigation systems, certain vessels (e.g. restricted by depth or size) may benefit from the additional level of detail shown in the largest scale ENC product available.

*Note for chart Aus 742*

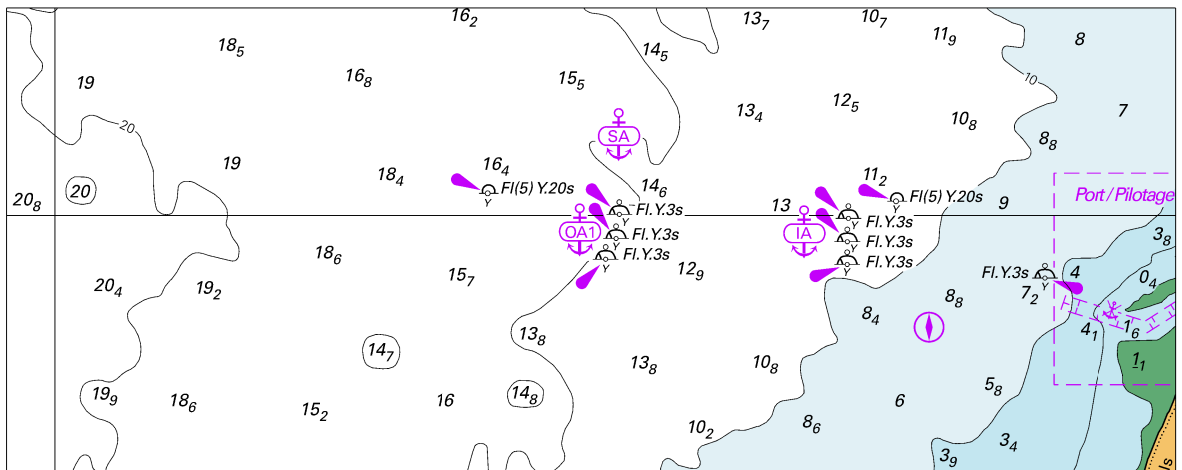
*To accompany Australian Notice to Mariners 880/2019*

ELECTRONIC NAVIGATIONAL CHART (ENC)

Larger scale ENC content exists in this area. When using electronic navigation systems, certain vessels (e.g. restricted by depth or size) may benefit from the additional level of detail shown in the largest scale ENC product available.

*Note for chart Aus 743*

To accompany Australian Notice to Mariners 867/2019

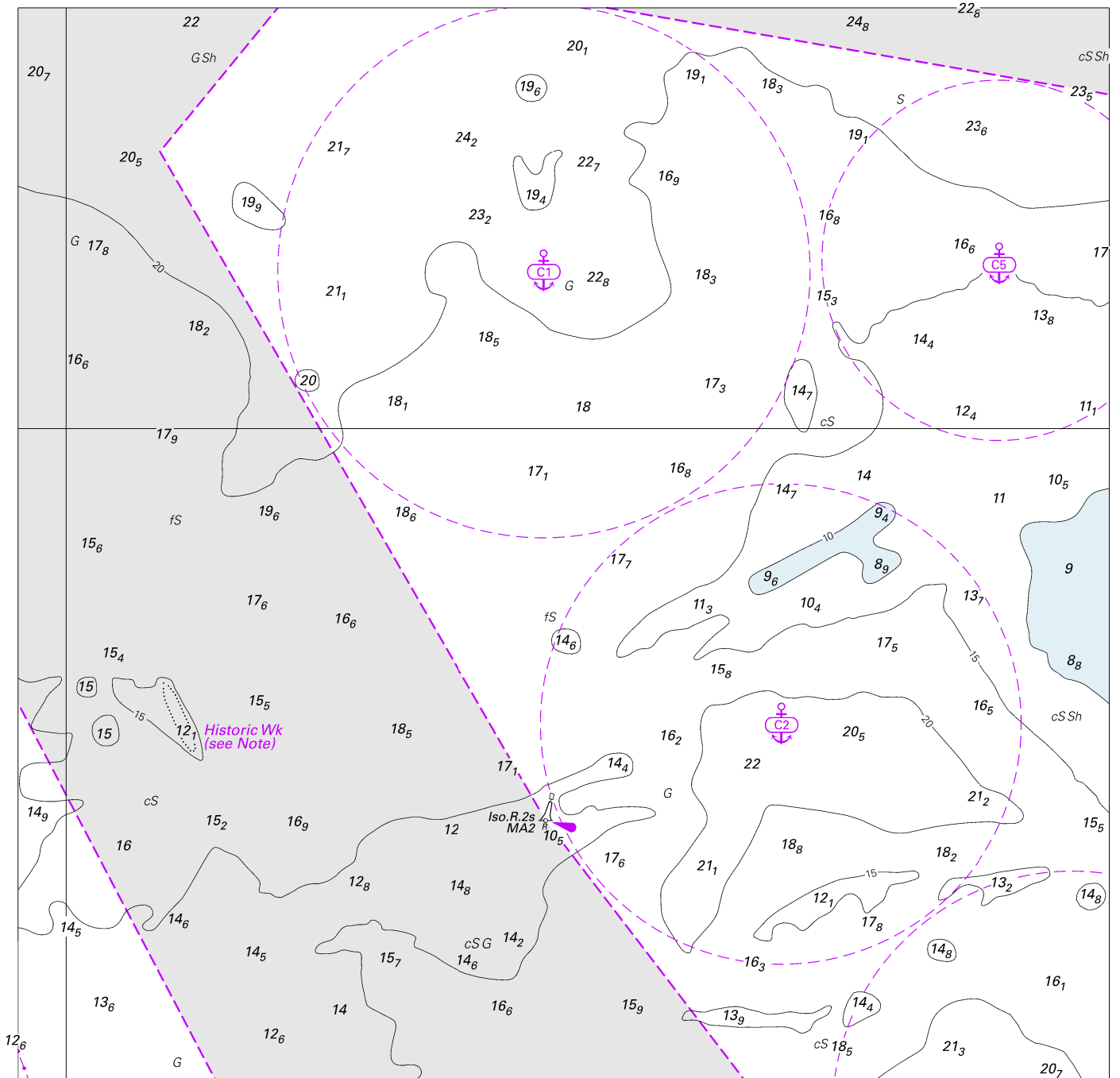


Block for chart Aus 701

© Commonwealth of Australia 2019

(154.7 x 61.1mm)

To accompany Australian Notice to Mariners 873/2019

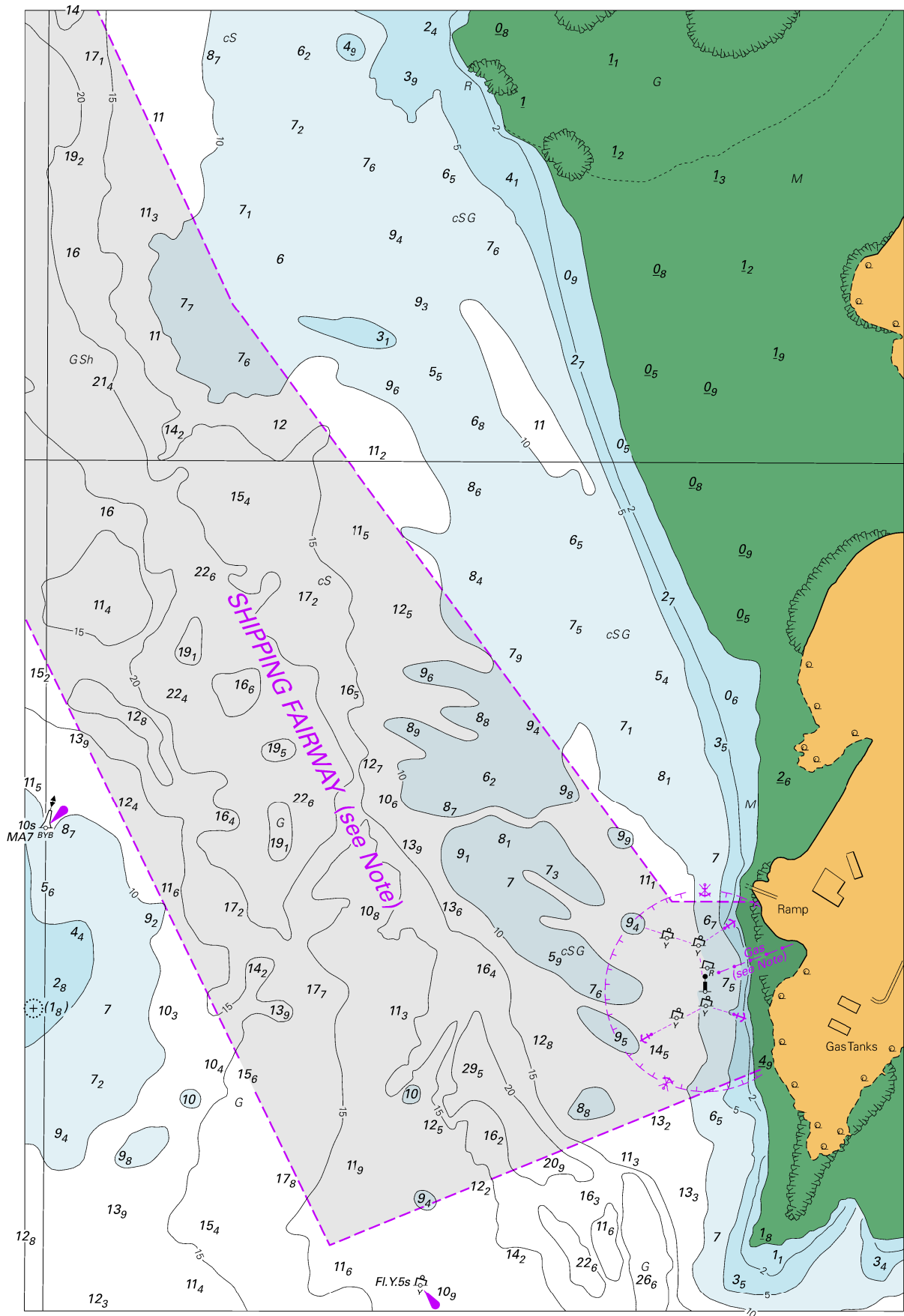


Block for chart Aus 24

© Commonwealth of Australia 2019

(181.7 x 178.4mm)

To accompany Australian Notice to Mariners 873/2019

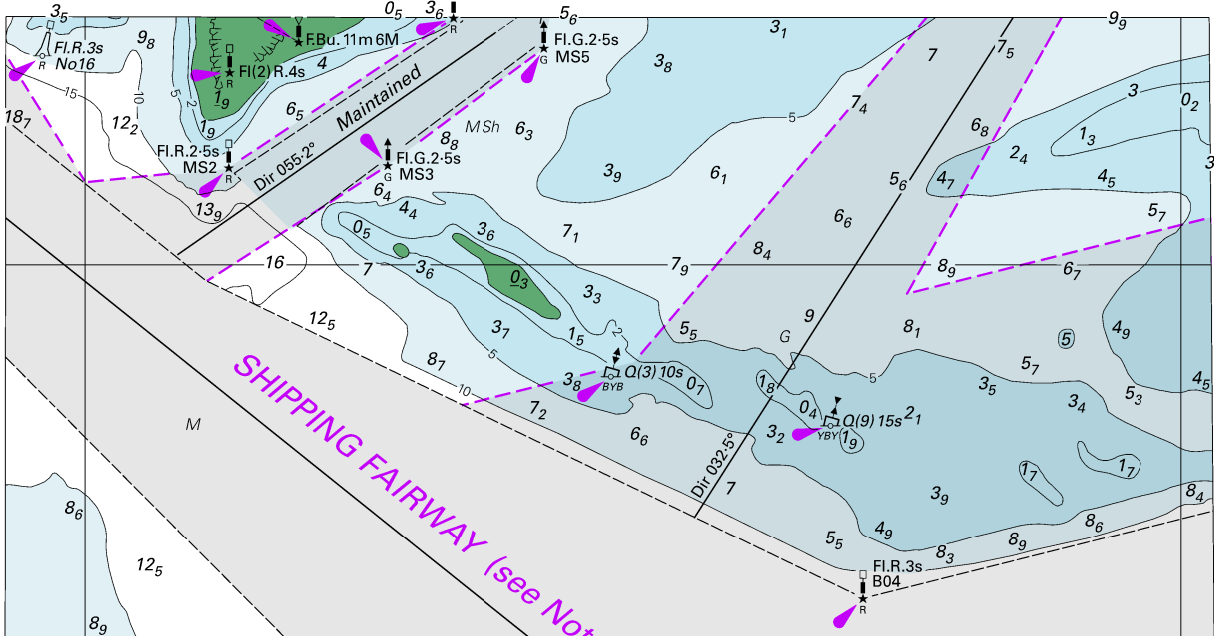


Block for chart Aus 27

© Commonwealth of Australia 2019

(154.5 x 229.6mm)

*To accompany Australian Notice to Mariners 873/2019*

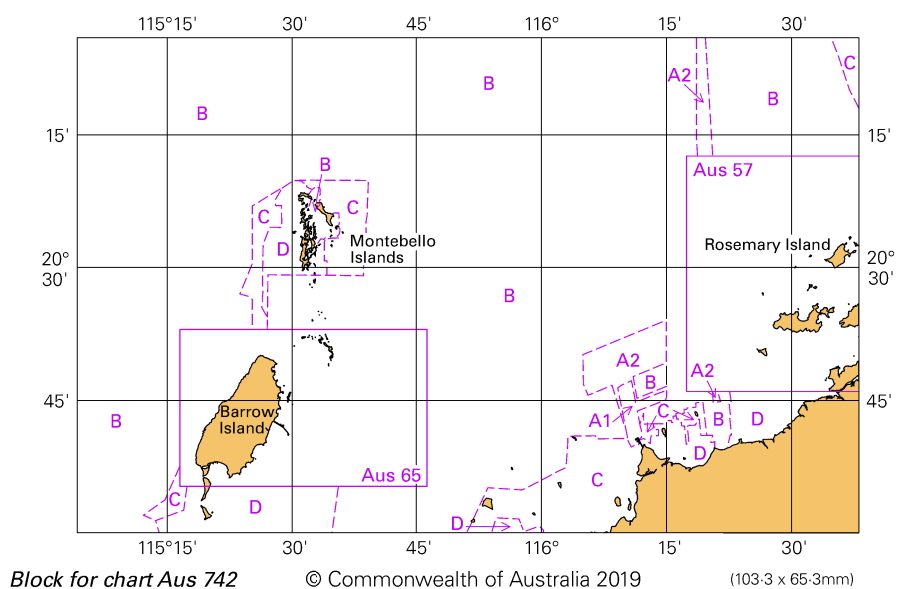


Block for chart Aus 28

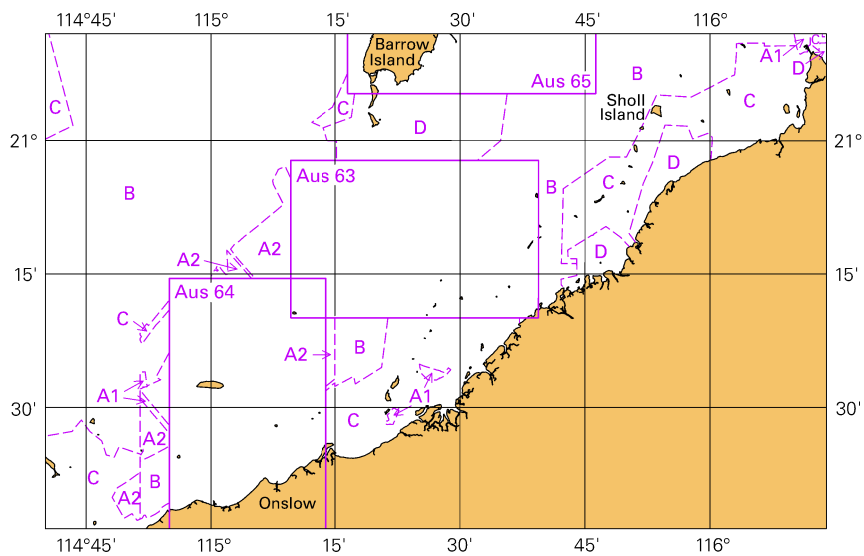
© Commonwealth of Australia 2019

(158.9  
(159.4 x 82.1mm)

To accompany Australian Notice to Mariners 880/2019



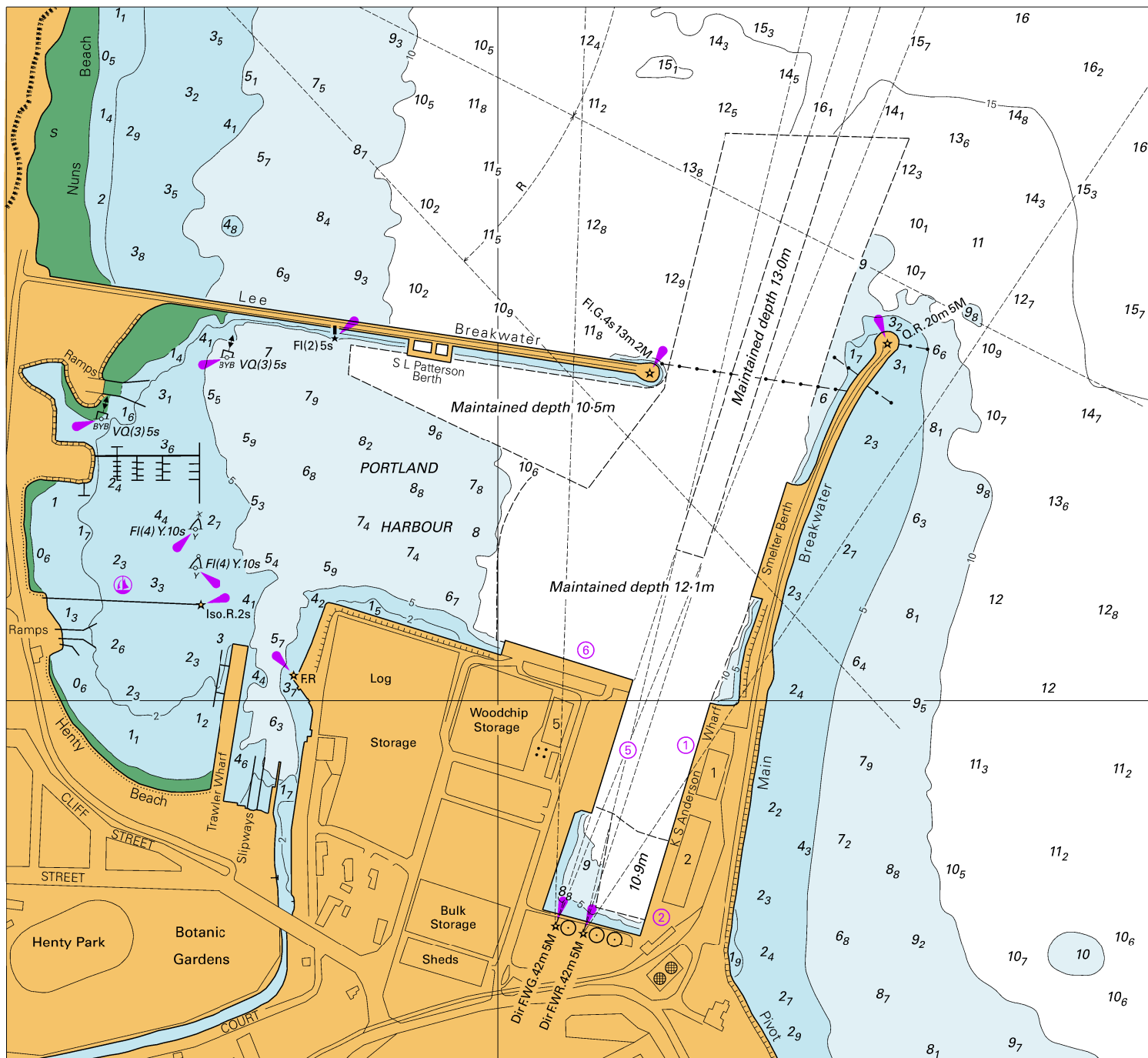
To accompany Australian Notice to Mariners 880/2019



© Commonwealth of Australia 2019

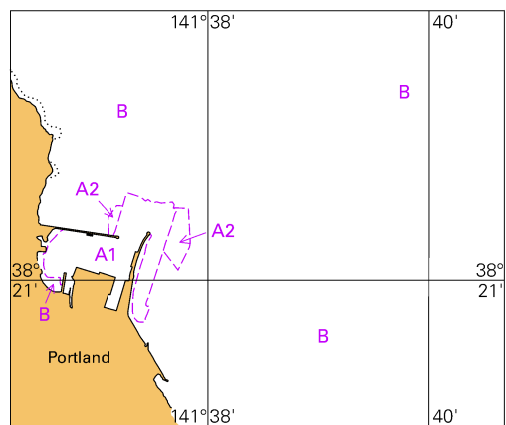
Block for chart Aus 743

(103.2 x 65.3mm)





*To accompany Australian Notice to Mariners 885/2019*

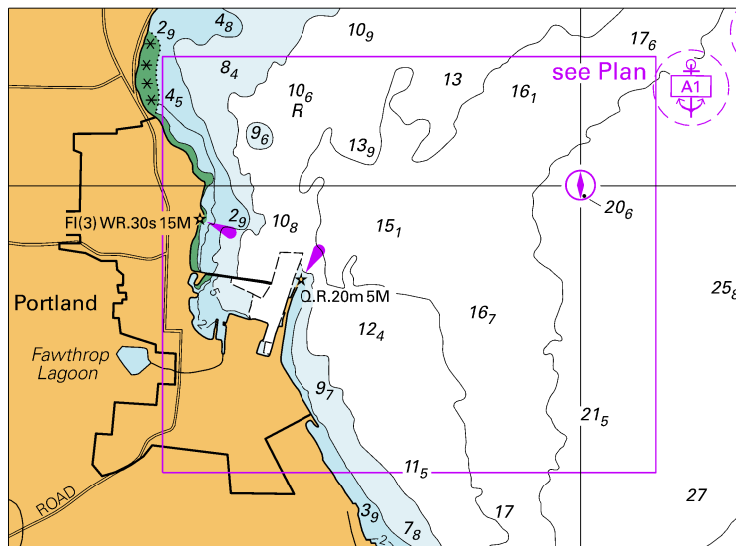


© Commonwealth of Australia 2019

**Block B for chart Aus 140**

(65.3 x 55.0mm)

To accompany Australian Notice to Mariners 885/2019



© Commonwealth of Australia 2019

Block C for chart Aus 140

(97.6 x 71.5mm)