



26 July 2019

Edition 15

AUSTRALIAN NOTICES TO MARINERS

Notices 750 - 808

Published fortnightly by the Australian Hydrographic Office



Australian Notices to Mariners are the authority for correcting charts and publications published by the Australian Hydrographic Office covering Australia, Papua New Guinea, Solomon Islands, Australian Antarctic Territory and Timor-Leste.

Commodore F.T. FREEMAN RAN
Hydrographer of Australia

SECTIONS.

- I. **Australian Notices to Mariners, including blocks and notes.**
- II. **Hydrographic Reports.**
- III. **Navigational Warnings.**

SUPPLEMENTS.

- I. **Tracings**
- II. **Cumulative List of Australian Notices to Mariners.**
- III. **Cumulative List of Temporary and Preliminary Australian Notices to Mariners.**
- IV. **Temporary and Preliminary Notices in force.**
- V. **Amendments to Admiralty List of Lights and Fog Signals (Vol K), Radio Signals (NP 281(2), 282, 283(2), 285, 286(4)) and Sailing Directions (NP 9, 13, 14, 15, 33, 34, 35, 36, 39, 44, 51, 60, 61, 62, 100, 136).**

© Commonwealth of Australia 2019

This work is copyright. Apart from any use permitted under the Copyright Act 1968, no part may be reproduced by any process, adapted, communicated or commercially exploited without prior written permission from The Commonwealth represented by the Australian Hydrographic Office.

IMPORTANT NOTICE

This edition of Notices to Mariners includes all significant information affecting AHO products which the AHO has become aware of since the last edition. All reasonable efforts have been made to ensure the accuracy and completeness of the information, including third party information, on which these updates are based. The AHO regards third parties from which it receives information as reliable, however the AHO cannot verify all such information and errors may therefore exist. The AHO does not accept liability for errors in third party information.

GENERAL INSTRUCTIONS

The substance of these notices should be inserted on the charts affected.

Bearings are referred to the true compass and are reckoned clockwise from North; those relating to lights are given as seen by an observer from seaward.

Positions quoted in notices relate to WGS84 which is the horizontal datum for all charts produced by the Australian Hydrographic Office.

The range quoted for a light is its nominal range.

Depths are with reference to the chart datum of each chart. Heights are above mean high water springs or mean higher high water, as appropriate.

The capital letter (P) or (T) after the number of any notice denotes a preliminary or temporary notice respectively, which are contained separately at the end of the permanent notices.

REPORTING OF DANGERS

Mariners are particularly requested to notify the AUSTRALIAN HYDROGRAPHIC OFFICE, Locked Bag 8801 Wollongong, NSW 2500 (Fax 02-4223 6599, e-mail datacentre@hydro.gov.au or, alternatively by filling in and submitting the [Hydrographic Notes](#) forms located on the web site – www.hydro.gov.au), immediately on the discovery of new dangers or suspected dangers to navigation. For changes or defects in aids to navigation notify AusSAR (Fax 02-6230 6868 or email rccaus@amsa.gov.au).

AUTHORISED USE

Copies of Australian notices are available free of charge from the Australian Hydrographic Office (AHO) website (www.hydro.gov.au) and through the eNotices (email) service (www.hydro.gov.au/enotices/enotices.htm).

Individual Notices may be copied for the purpose of inserting Notice substance on official charts and publications. Paper copies may be printed by chart agents and distributed to customers on a cost recovery basis. Participating chart agents are listed on the AHO website as providing a 'Paper Notices to Mariners' service (www.hydro.gov.au/webapps/jsp/agents/agents-list.jsp). Copies of the notices may not be sold for profit without prior written agreement.

NUMERICAL INDEX OF NOTICES TO MARINERS

Edition No 15

Notices	Aus Chart, INT Chart, ENC Cell, AHP, BA Pubs
750	Aus 68, 243, 280, 281, 326, 327, 378, 674, 701, 739, 740, 741, 751, 756, 757, 758, 759
751	Aus 57, 58, 111, 114, 117, 616, 778
752	Aus 222
753	Aus 194
754	Aus 268
755	Aus 235, 236
756	Aus 237, 238
757	Aus 236, 237
758	Aus 243
759	Aus 242
760	Aus 263, 264
761	Aus 831, 832
762	Aus 270, 833
763	Aus 831
764	Aus 240
765	Aus 250
766	Aus 249
767	Aus 236
768	Aus 236
769	Aus 835
770	Aus 831, 832
771	Aus 835
772	Aus 840, 841
773	Aus 840
774	Aus 22
775	Aus 25, 722
776	Aus 902
777	Aus 4723, INT 723
778	Aus 113
779	Aus 54
780	Aus 314, 319, 320
781	Aus 40, 732, 733
782	Aus 181, 182
783	Aus 155
784	Aus 154
785(T)	Aus 258, 259, 267, 827, 828, 829
786(T)	Aus 6
787(T)	Aus 252, 253
788(T)	Aus 235, 236, 814, 815
789(T)	Aus 256, 827
790(T)	Aus 260, 367, 822
791(T)	Aus 4
792(T)	Aus 387, 388, 4622, INT 622
793(T)	Aus 377, 840
794(T)	Aus 839
795(T)	Aus 325, 326, 739, 4722, INT 722
796(T)	Aus 326, 739, 4722, INT 722
797(T)	Aus 325, 326, 739, 4722, INT 722
798(T)	Aus 752
799(T)	Aus 57, 58, 60, 741, 742
800(T)	Aus 112, 113, 117, 754
801(T)	Aus 112, 113, 114, 117, 754
802(T)	Aus 327, 741, 4603, 4708, 4722, 4723, INT 603, 708, 722, 723
803(T)	Aus 53
804(T)	Aus 357, 487, 4644, INT 644
805(T)	Aus 357, 487
806(P)	Aus 182
807(T)	Aus 349, 787, 4728, INT 728
808(T)	Aus 150, 151

NUMERICAL INDEX OF CHARTS AFFECTED

Edition No 15

Aus Chart	Notices
Aus 4	791(T)
Aus 6	786(T)
Aus 22	774
Aus 25	775
Aus 40	781
Aus 53	803(T)
Aus 54	779
Aus 57	751, 799(T)
Aus 58	751, 799(T)
Aus 60	799(T)
Aus 68	750
Aus 111	751
Aus 112	800(T), 801(T)
Aus 113	778, 800(T), 801(T)
Aus 114	751, 801(T)
Aus 117	751, 800(T), 801(T)
Aus 150	808(T)
Aus 151	808(T)
Aus 154	784
Aus 155	783
Aus 181	782
Aus 182	782, 806(P)
Aus 194	753
Aus 222	752
Aus 235	755, 788(T)
Aus 236	755, 757, 767, 768, 788(T)
Aus 237	756, 757
Aus 238	756
Aus 240	764
Aus 242	759
Aus 243	750, 758
Aus 249	766
Aus 250	765
Aus 252	787(T)
Aus 253	787(T)
Aus 256	789(T)
Aus 258	785(T)
Aus 259	785(T)
Aus 260	790(T)
Aus 263	760
Aus 264	760
Aus 267	785(T)
Aus 268	754
Aus 270	762
Aus 280	750
Aus 281	750
Aus 314	780
Aus 319	780
Aus 320	780
Aus 325	795(T), 797(T)
Aus 326	750, 795(T), 796(T), 797(T)
Aus 327	750, 802(T)
Aus 349	807(T)
Aus 357	804(T), 805(T)

Aus Chart	Notices
Aus 367	790(T)
Aus 377	793(T)
Aus 378	750
Aus 387	792(T)
Aus 388	792(T)
Aus 487	804(T), 805(T)
Aus 616	751
Aus 674	750
Aus 701	750
Aus 722	775
Aus 732	781
Aus 733	781
Aus 739	750, 795(T), 796(T), 797(T)
Aus 740	750
Aus 741	750, 799(T), 802(T)
Aus 742	799(T)
Aus 751	750
Aus 752	798(T)
Aus 754	800(T), 801(T)
Aus 756	750
Aus 757	750
Aus 758	750
Aus 759	750
Aus 778	751
Aus 787	807(T)
Aus 814	788(T)
Aus 815	788(T)
Aus 822	790(T)
Aus 827	785(T), 789(T)
Aus 828	785(T)
Aus 829	785(T)
Aus 831	761, 763, 770
Aus 832	761, 770
Aus 833	762
Aus 835	769, 771
Aus 839	794(T)
Aus 840	772, 773, 793(T)
Aus 841	772
Aus 902	776
Aus 4603	802(T)
Aus 4622	792(T)
Aus 4644	804(T)
Aus 4708	802(T)
Aus 4722	795(T), 796(T), 797(T), 802(T)
Aus 4723	777, 802(T)
Aus 4728	807(T)

INT Chart	Notices
INT 603	802(T)
INT 622	792(T)

INT Chart	Notices
INT 644	804(T)
INT 708	802(T)
INT 722	795(T) , 796(T) , 797(T) , 802(T)
INT 723	777 , 802(T)
INT 728	807(T)

750 AUSTRALIA - Products - New Charts and New Editions to be published shortly

Australian Hydrographic Office

New Charts to be published shortly

<i>Chart</i>	<i>Title</i>	<i>Scale</i>	<i>Expected Publication Date</i>	<i>Remarks</i>
PNG 378	Papua New Guinea - South Coast - Daru Roads to Kerema Bay	1:300 000	9 August 2019	Adoption of Papua New Guinea chart numbering. Replaces Aus 378. General updating throughout.
PNG 674	Papua New Guinea - New Britain - North Coast - Approaches to Kimbe including Buluma	1:37 500	9 August 2019	Adoption of Papua New Guinea chart numbering. Replaces Aus 674. General updating throughout; including latest bathymetric data.

New Editions to be published shortly

<i>Chart</i>	<i>Title</i>	<i>Scale</i>	<i>Expected Publication Date</i>	<i>Remarks</i>
Aus 326	Australia - North West Coast - Western Australia - Bedout Island to Port Walcott	1:300 000	9 August 2019	New edition with general updating throughout for withdrawal of larger scale charts.
Aus 327	Australia - North West Coast - Western Australia - Port Walcott to Montebello Islands	1:300 000	9 August 2019	New edition with general updating throughout for withdrawal of larger scale charts.

Charts to be withdrawn

<i>Chart</i>	<i>Remarks</i>
Aus 378	On publication of new chart PNG 378
Aus 674	On publication of new chart PNG 674

Charts to be withdrawn without replacement 9 August 2019

<i>Chart</i>	<i>Title</i>	<i>Scale</i>	<i>Publication Date</i>
Aus 68 Edition 1	Australia - North West Coast - Western Australia - Approaches to Cape Preston Inset: Cape Preston	1:50 000 1:10 000	8 March 2013
Aus 739 Edition 3	Australia - North West Coast - Western Australia - Bedout Islet to Port Hedland	1:150 000	15 January 2010
Aus 740 Edition 3	Australia - North West Coast - Western Australia - Port Hedland to Port Walcott Inset: Depuch Island Anchorage	1:150 000 1:20 000	15 January 2010
Aus 741 Edition 3	Australia - North West Coast - Western Australia - Approaches to Dampier Archipelago	1:150 000	6 November 2015

Charts to be withdrawn without replacement 4 October 2019

<i>Chart</i>	<i>Title</i>	<i>Scale</i>	<i>Publication Date</i>
Aus 243 Edition 2	Australia - East Coast - Queensland - Approaches to Bundaberg	1:50 000	6 January 2006

750

AUSTRALIA - Products - New Charts and New Editions to be published shortly**Charts to be withdrawn without replacement 4 October 2019**

<i>Chart</i>	<i>Title</i>	<i>Scale</i>	<i>Publication Date</i>
Aus 701 Edition 2	Australia - North Coast - Queensland - Vrilya Point to Duyfken Point	1:150 000	13 February 2009
Aus 756 Edition 3	Australia - South West Coast - Western Australia - Cape Naturaliste to Cape Leeuwin	1:150 000	16 January 2009
Aus 757 Edition 3	Australia - South Coast - Western Australia - Cape Leeuwin to Point D'Entrecasteaux	1:150 000	16 January 2009
Aus 758 Edition 3	Australia - South Coast - Western Australia - Point D'Entrecasteaux to Point Hillier	1:150 000	16 January 2009
Aus 759 Edition 2	Australia - South Coast - Western Australia - Point Hillier to Bald Island	1:150 000	16 January 2009

Charts to be withdrawn without replacement 18 October 2019

<i>Chart</i>	<i>Title</i>	<i>Scale</i>	<i>Publication Date</i>
Aus 280 Edition 5	Australia - East Coast - Queensland - Plans in Queensland (Sheet 3) Plans: Magpie Reef to Eden Reef Flinders Group	 1:75 000 1:50 000	22 February 2019
Aus 281 Edition 3	Australia - East Coast - Queensland - First Three Mile Opening to Cape Direction	1:75 000	22 February 2019
Aus 751 Edition 2	Australia - West Coast - Western Australia - Houtman Abrolhos and Geelvink Channel	1:150 000	29 June 2012

751 AUSTRALIA - Products - New Charts, New Editions, Withdrawn Charts

Australian Hydrographic Office

New Charts

<i>Chart</i>	<i>Title and Geographical limits</i>	<i>Scale</i>	<i>Publication Date</i>	<i>Remarks</i>
NIL				

New Electronic Navigation Chart (Aus ENC)

<i>Cell Name</i>	<i>Title</i>	<i>Publication Date</i>	<i>Remarks</i>
NIL			

New Editions and Withdrawn Charts

<i>Chart</i>	<i>Title</i>	<i>Scale</i>	<i>Publication Date</i>	<i>Remarks</i>
Aus 57 (Edition 9)	Australia - North West Coast - Western Australia - Dampier Archipelago	1:75 000	26 July 2019	New edition with general updating throughout; including latest bathymetric data. Chart Aus 57 Edition 8 dated 1 August 2014 is now superseded and must be withdrawn from use. Note: smaller scale products will be updated in ANTM Edition 16 (9 August 2019).
Aus117 (Edition 7)	Australia - West Coast - Western Australia - Gage Roads and Cockburn Sound	1:25 000	26 July 2019	New edition with general updating throughout; including latest bathymetric data. Chart Aus 117 Edition 6 dated 6 November 2015 is now superseded and must be withdrawn from use.
Aus 616 (Edition 3)	Australia - East Coast - Coral Sea - Plans in the Coral Sea (Sheet 4) Plans: Osprey Reef and Shark Reef Herald Cays Bougainville Reef North East Cay Anchorage Osprey Reef Entrance	1:100 000 1:75 000 1:75 000 1:25 000 1:20 000	26 July 2019	New edition with general updating throughout; including latest bathymetric data. Chart Aus 616 Edition 2 dated 9 June 2000 is now superseded and must be withdrawn from use.
Aus 778 (Edition 3)	Australia - South Coast - South Australia - Point Riley to Port Augusta Plan: Yarraville Shoals	1:150 000 1:37 500	26 July 2019	New edition with general updating throughout; including latest bathymetric data. Chart Aus 778 Edition 2 dated 2 February 2007 is now superseded and must be withdrawn from use.

Charts withdrawn

<i>Chart</i>	<i>Remarks</i>
Aus 58	On publication of NE Aus 57
Aus 111	On publication of NE Aus 117
Aus 114	On publication of NE Aus 117

Chart permanently withdrawn

Charts listed above as withdrawn no longer meet chart carriage requirements and should be marked as "superseded" and replaced with the new chart/ new edition listed prior to passage through the area covered by the new chart.

When placing orders with a chart agent between notice of forthcoming edition and its publication, mariners should advise whether their order pertains to the current edition or the new edition.

751 AUSTRALIA - Products - New Charts, New Editions, Withdrawn Charts

For further details refer to the AHO website at www.hydro.gov.au for new edition and new chart stock arrival information.

752 AUSTRALIA - NEW SOUTH WALES - Clarence River - Yamba - Lights

Port Authority of New South Wales

Aus 222 [708/2018]

Amend	light to Q.G	29° 22'.64 S	153° 17'.36 E
	light to Oc.Bu.4s	29° 23'.35 S	153° 20'.06 E
	light to Q.R	29° 25'.04 S	153° 20'.62 E
	light to Oc.Bu.3s & Oc.R.3s	29° 25'.46 S	153° 20'.63 E

753 AUSTRALIA - NEW SOUTH WALES - Port Kembla - Light buoy withdrawn

Port Authority of New South Wales

Aus 194 [517/2019]

Delete	light buoy	34° 28'.15 S	150° 54'.74 E
--------	------------	--------------	---------------

754 AUSTRALIA - QUEENSLAND - Bowen - Light buoys

Maritime Safety Queensland Notice 336/2019

Aus 268 [379/2019]

Insert	special spar light buoy, Fl.Y.1·5s, without topmark	20° 00'.197 S	148° 16'.733 E
	special spar light buoy, Fl.Y.1·5s, without topmark	20° 02'.386 S	148° 14'.747 E

755 AUSTRALIA - QUEENSLAND - Bribie Island - Skirmish Point - Lights

Maritime Safety Queensland Notice 327/2019

Aus 235 [689/2019]

Delete	structure colour, Y	27° 03'.2 S	153° 12'.0 E
--------	---------------------	-------------	--------------

Aus 236 [690/2019]

Insert	red spherical light buoy, Fl.Y.2·5s, without topmark	27° 04'.74 S	153° 12'.49 E
Delete	structure colour, Y	27° 03'.2 S	153° 12'.0 E

756 AUSTRALIA - QUEENSLAND - Brisbane River - Upper Lytton Reach - Lights

Former Notice - 66(T)/2017 is cancelled

Maritime Safety Queensland

Aus 237 [645/2019]

Amend	light to Q.Bu (F Day) No6F	27° 25'.15 S	153° 08'.67 E
-------	----------------------------	--------------	---------------

Aus 238 [645/2019]

Amend	light to Q.Bu (F Day) No6F	27° 25'.15 S	153° 08'.67 E
	light to Q.Bu (F Day) No7F	27° 25'.60 S	153° 08'.12 E
	light to Iso.Bu.2s (F Day) No7R	27° 25'.72 S	153° 08'.02 E

757 AUSTRALIA - QUEENSLAND - Brisbane River - Lytton Rocks Reach - Light

Maritime Safety Queensland

Aus 236 [755/2019]

Amend	light to Iso.Bu.2s 25m (F.Y Day)	27° 24'.4 S	153° 08'.5 E
-------	----------------------------------	-------------	--------------

Aus 237 [756/2019]

Amend	light to Iso.Bu.2s 25m (F.Y Day) No1R	27° 24'.38 S	153° 08'.53 E
-------	---------------------------------------	--------------	---------------

758 AUSTRALIA - QUEENSLAND - Bundaberg - Light buoy northeastwards

Maritime Safety Queensland Notice 272/209

Aus 243 [520/2019]

Move	light buoy	24° 40'.1 S	152° 30'.0 E
	to	24° 40'.25 S	152° 30'.02 E

759 AUSTRALIA - QUEENSLAND - Bundaberg - Burnett River - Rocky Reach - Light buoy

Maritime Safety Queensland

Aus 242 (Burnett River (Northern Section)) [903/2018]

Insert	starboard lateral conical light buoy, <i>Fl.G.4s BR3</i> , with topmark	24° 47'.883 S	152° 22'.872 E
--------	---	---------------	----------------

Delete	light buoy	24° 47'.87 S	152° 22'.81 E
--------	------------	--------------	---------------

760 AUSTRALIA - QUEENSLAND - Cairns - Trinity Inlet - Wreck*Former Notice - 1090(T)/2017 is cancelled*

Maritime Safety Queensland

Aus 263 [522/2019]

Insert	non-dangerous wreck	16° 56'.874 S	145° 47'.145 E
--------	---------------------	---------------	----------------

Aus 264 [522/2019]

Insert	non-dangerous wreck	16° 56'.874 S	145° 47'.145 E
--------	---------------------	---------------	----------------

761 AUSTRALIA - QUEENSLAND - Cape Flattery - Three Islands - Light

Australian Maritime Safety Authority

Aus 831 [104/2019]

Amend	light to <i>Fl(3) 15s 16m 15M</i>	15° 06'.6 S	145° 25'.1 E
-------	-----------------------------------	-------------	--------------

Aus 832 [259/2019]

Amend	light to <i>Fl(3) 15s 16m 15M</i>	15° 06'.6 S	145° 25'.1 E
-------	-----------------------------------	-------------	--------------

762 AUSTRALIA - QUEENSLAND - Cape Melville - Melanie Rock - Virtual AIS

Australian Maritime Safety Authority

Aus 270 (Cape Melville and Pipon Islets) [691/2019]

Insert	west cardinal virtual AIS	14° 05'.95 S	144° 34'.20 E
--------	---------------------------	--------------	---------------

Aus 833 [691/2019]

Insert	west cardinal virtual AIS	14° 05'.95 S	144° 34'.20 E
--------	---------------------------	--------------	---------------

763 AUSTRALIA - QUEENSLAND - Cowlshaw Reef - Light beacon

Australian Maritime Safety Authority ATH 14/2019

Aus 831 [761/2019]

Replace	beacon with east cardinal light beacon, <i>Q(3)10s 8M</i> , with topmark	15° 32'.0 S	145° 21'.3 E
---------	--	-------------	--------------

764 AUSTRALIA - QUEENSLAND - Great Sandy Strait - Fraser Island - Beacons moved

Maritime Safety Queensland Notice 271/2019

Aus 240 [151/2019]

Move	beacon	25° 44'.80 S	153° 00'.41 E
	to	25° 44'.77 S	153° 00'.30 E

Delete	depth, 3 ₂ m	25° 44'.7 S	153° 00'.3 E
--------	-------------------------	-------------	--------------

765 AUSTRALIA - QUEENSLAND - Mackay - Light buoy moved
Maritime Safety Queensland Notice 261/2019

Aus 250 (Mackay Harbour) [NE 14/6/2019]

Move	light buoy	21° 06'.08 S	149° 15'.47 E
	to	21° 05'.996 S	149° 15'.487 E

766 AUSTRALIA - QUEENSLAND - Mackay - Depth eastwards
Australian Hydrographic Office

Aus 249 [685/2019]

Replace	depth, 16 ₄ m, with depth, 19 ₅ m	21° 06'.1 S	149° 22'.0 E
---------	---	-------------	--------------

767 AUSTRALIA - QUEENSLAND - Moreton Bay - Manly Boat Harbour - VTS
Australian Hydrographic Office , UKHO

Aus 236 (Manly Boat Harbour) [757/2019]

Amend	magenta legend to <i>Brisbane Port/VTS Limit</i>	27° 25'.36 S	153° 10'.73 E
-------	--	--------------	---------------

768 AUSTRALIA - QUEENSLAND - Moreton Bay - Middle Banks - Light southwestwards
Maritime Safety Queensland

Aus 236 [767/2019]

Amend	light to <i>Iso.Bu.2s 20m & Mo(A) 6s 4M</i>	27° 15'.0 S	153° 15'.1 E
-------	---	-------------	--------------

769 AUSTRALIA - QUEENSLAND - Shelburne Bay to Cape Grenville - Depths
HMAS *Mermaid* and HMAS *Paluma*

Aus 835 [423/2019]

Insert	accompanying block A	11° 41'.655 S	142° 56'.087 E
	accompanying block B	11° 47'.676 S	143° 07'.503 E
	accompanying block C	12° 31'.50 S	142° 56'.40 E

770 AUSTRALIA - QUEENSLAND - Two Islands - Wreck
Former Notice - 1274(T)/2013 is cancelled
Maritime Safety Queensland

Aus 831 [763/2019]

Insert	out of position non-dangerous wreck	15° 01'.72 S	145° 28'.01 E
--------	-------------------------------------	--------------	---------------

Aus 832 [761/2019]

Insert	out of position non-dangerous wreck	15° 01'.72 S	145° 28'.01 E
--------	-------------------------------------	--------------	---------------

771 AUSTRALIA - QUEENSLAND - Young Reef - Light
Australian Maritime Safety Authority Final ATH 15/2019

Aus 835 [769/2019]

Replace	beacon with east cardinal light beacon, Q(3)10s 8M, with topmark	12° 07'.5 S	143° 13'.0 E
---------	--	-------------	--------------

772 PAPUA NEW GUINEA - Auwamaza Reefs to Saibai Island - Depths

LADS Flight

Aus 840 [697/2019]

Insert	depth, 2 ₇ m, enclosed by contour	9° 18'.00 S	143° 15'.24 E
	depth, 2 ₈ m and extend contour SE to enclose	9° 18'.87 S	143° 14'.94 E
	depth, 1 ₆ m, enclosed by contour	9° 21'.35 S	143° 14'.70 E

Replace	depth 3 ₃ m, with depth, 0 ₈ m enclosed by contour	9° 22'.9 S	143° 14'.2 E
---------	--	------------	--------------

Delete	depth, 2 ₆ m	9° 18'.7 S	143° 14'.6 E
--------	-------------------------	------------	--------------

Aus 841 [1063/2018]

Insert	depth, 0 ₈ m, and extend contour N to enclose	9° 23'.68 S	142° 35'.20 E
--------	--	-------------	---------------

Delete	depth, 1 ₇ m	9° 23'.9 S	142° 35'.2 E
--------	-------------------------	------------	--------------

773 AUSTRALIA - TORRES STRAIT - Darnley Island - Wreck

Maritime Safety Queensland

Aus 840 [772/2019]

Insert	stranded wreck	9° 35'.54 S	143° 47'.00 E
--------	----------------	-------------	---------------

774 AUSTRALIA - NORTHERN TERRITORY - Apsley Strait - Buoys withdrawn

Argonaut Marine Group

Aus 22 (Apsley Strait (Northern Sheet)) [344/2016]

Delete	buoy	11° 24'.8 S	130° 23'.7 E
	buoy	11° 25'.0 S	130° 24'.0 E
	buoy	11° 25'.3 S	130° 24'.5 E

775 AUSTRALIA - NORTHERN TERRITORY - Darwin - Shoal Bay Peninsula - Light beacons

Department of Infrastructure, Planning and Logistics NT

Aus 25 [587/2019]

Insert	accompanying block	12° 20'.4 S	130° 55'.8 E
--------	--------------------	-------------	--------------

Aus 722 [587/2019]

Insert	light beacon, Fl.G.5s, without topmark	12° 20'.20 S	130° 55'.83 E
--------	--	--------------	---------------

Delete	light beacon	12° 20'.4 S	130° 55'.7 E
--------	--------------	-------------	--------------

776 TIMOR-LESTE - Hera - Nav aids

Australian Hydrographic Office

Aus 902 (Approaches to Hera) [1126/2018]

Insert	starboard lateral light beacon, Fl.G.6s, without topmark	8° 31'.827 S	125° 41'.082 E
	light beacon, Iso.4s, without topmark	8° 31'.962 S	125° 40'.842 E
	beacon with green cylindrical topmark	8° 32'.014 S	125° 40'.848 E

Amend	buoy colour to, R	8° 31'.73 S	125° 41'.37 E
	buoy colour to, R	8° 31'.73 S	125° 41'.09 E
	buoy colour to, R	8° 31'.79 S	125° 41'.34 E
	buoy colour to, R	8° 31'.88 S	125° 41'.30 E
	buoy colour to, R	8° 31'.91 S	125° 41'.16 E

Delete	light beacon	8° 31'.82 S	125° 41'.09 E
--------	--------------	-------------	---------------

777 INDONESIA - Bali - Light range altered
UKHO Notice 25/3084/2019

Aus 4723 (INT 723) [430/2019]

Amend	light range to 18M	8° 23'.9 S	115° 42'.3 E
	light range to 6M	8° 31'.9 S	115° 35'.1 E
	light range to 25M	8° 34'.0 S	116° 04'.3 E

778 AUSTRALIA - WESTERN AUSTRALIA - Fremantle - Success Boat Harbour - Light beacon
Department of Transport WA Notice 129/2019

Aus 113 [485/2018]

Amend	light elevation to 3m	32° 03'.88 S	115° 44'.56 E
-------	-----------------------	--------------	---------------

779 AUSTRALIA - WESTERN AUSTRALIA - Port Hedland - Hunt Point - Light beacons
BHP Billiton

Aus 54 [619/2018]

Insert	light beacon, Oc. Y. 4s, with special topmark	20° 18'.263 S	118° 34'.209 E
	light beacon, Oc. Y. 4s, with special topmark	20° 18'.270 S	118° 34'.185 E

780 AUSTRALIA - WESTERN AUSTRALIA - Vulcan Shoal to Echuca Shoal - Depths
Geoscience Australia

Aus 314 [1018/2018]

Insert	accompanying block	12° 51'.0 S	124° 22'.0 E
--------	--------------------	-------------	--------------

Aus 319 [589/2019]

Insert	accompanying block A	12° 53'.0 S	124° 20'.0 E
	accompanying block B	13° 57'.0 S	123° 55'.0 E

Aus 320 [700/2019]

Insert	accompanying block	13° 57'.0 S	123° 55'.0 E
--------	--------------------	-------------	--------------

781 AUSTRALIA - WESTERN AUSTRALIA - Yampi Sound - Comber Rock - Buoy colour
Department of Transport WA

Aus 40 [651/2019]

Amend	buoy colour to BYB	16° 06'.42 S	123° 39'.66 E
-------	--------------------	--------------	---------------

Aus 732 [651/2019]

Amend	buoy colour to BYB	16° 06'.4 S	123° 39'.7 E
-------	--------------------	-------------	--------------

Aus 733 [651/2019]

Amend	buoy colour to BYB	16° 06'.4 S	123° 39'.7 E
-------	--------------------	-------------	--------------

782 AUSTRALIA - VICTORIA - Port Albert - Depths
Former Notice - 43(T)/2018 is cancelled
Gippsland Ports

Aus 181 [386/2019]

Insert	accompanying block	38° 45'.0 S	146° 41'.0 E
--------	--------------------	-------------	--------------

Aus 182 (Approaches to Port Albert) [712/2019]

Insert	accompanying block	38° 44'.8 S	146° 40'.7 E
--------	--------------------	-------------	--------------

783 AUSTRALIA - VICTORIA - Port Phillip - St Kilda Marina - Infrastructure
Parks Victoria , Australian Hydrographic Office

Aus 155 [709/2019]

Insert	accompanying block	37° 52'.6 S	145° 00'.0 E
--------	--------------------	-------------	--------------

784 AUSTRALIA - VICTORIA - Port Phillip - Williamstown - Obstruction; buoy

Former Notice - 511(T)/2019 is cancelled

Parks Victoria Notice 167/2019

Aus 154 [709/2019]

Insert	isolated danger spar buoy, without topmark	37° 51'.411 S	144° 54'.242 E
	danger circle with legend <i>Obstn</i> , centred on	37° 51'.413 S	144° 54'.229 E

785(T)/2019 AUSTRALIA - QUEENSLAND - Great Palm Island to Mourilyan Harbour - Military exercise completed
Former Notice - 598(T)/2019 is cancelled
 Department of Defence

Cancel this notice on receipt.

Chart formerly affected - Aus 258 - Aus 259 - Aus 267 - Aus 827 - Aus 828 - Aus 829

786(T)/2019 AUSTRALIA - QUEENSLAND - Karumba - Dredging operations
 Maritime Safety Queensland

Vessel *LaurieM* and the dredge *Brisbane* are conducting dredging operations in the entrance channel (17° 26'.00 S 140° 44'.00 E).

Mariners are advised to navigate with caution in the area.

Chart temporarily affected - Aus 6

787(T)/2019 AUSTRALIA - QUEENSLAND - Molle Channel - Subsea operations completed; pipeline operations completed
Former Notice - 275(T)/2019 is cancelled
 Maritime Safety Queensland

Cancel this notice on receipt.

Chart formerly affected - Aus 252 - Aus 253

788(T)/2019 AUSTRALIA - QUEENSLAND - Moreton Bay - Inner Freeman Channel - Shoaling
Former Notice - 120(T)/2019 is cancelled
 Australian Hydrographic Office

Cancel this notice on receipt.

Chart formerly affected - Aus 235 - Aus 236 - Aus 814 - Aus 815

789(T)/2019 AUSTRALIA - QUEENSLAND - Rattlesnake Island - Military exercise; live firing completed
Former Notice - 661(T)/2019 is cancelled
 Maritime Safety Queensland Notice 290(T)/2019, 295(T)/2019, 296(T)/2019, 297(T)/2019, 298(T)/2019

Cancel this notice on receipt.

Chart formerly affected - Aus 256 - Aus 827

790(T)/2019 AUSTRALIA - QUEENSLAND - Shoalwater Bay - Live firing
 Maritime Safety Queensland Notice 316(T)/2019

Live firing will be conducted in the Shoalwater Bay training area during the period 30 July to 24 August 2019.

A marine danger area extends to all internal waters bounded by the following positions:

22° 17'.71 S 150° 33'.66 E
 22° 18'.98 S 150° 33'.98 E
 22° 27'.02 S 150° 34'.98 E
 22° 24'.33 S 150° 26'.87 E
 22° 20'.94 S 150° 29'.15 E.

All waters, creeks, beaches and other areas within the declared marine danger area are not available for access.

There will be a safe anchorage available at Freshwater, Port Clinton, West Water Port Clinton, South Arm Port Clinton, Pearl Bay, Island Head Creek and Supply Bay Townshend Island.

Mariners are advised to keep clear of this area throughout the above times.

Chart temporarily affected - Aus 260 - Aus 367 - Aus 822

791(T)/2019 AUSTRALIA - QUEENSLAND - Weipa to Amrun Wharf - Dredging operations completed

Former Notice - 605(T)/2019 is cancelled
Maritime Safety Queensland

Cancel this notice on receipt.

Chart formerly affected - Aus 4

792(T)/2019 PAPUA NEW GUINEA - Cape Croisilles - Light relit

Former Notice - 394(T)/2019 is cancelled
National Maritime Safety Authority PNG

Cancel this notice on receipt.

Chart formerly affected - Aus 387 - Aus 388 - Aus 4622 (INT 622)

793(T)/2019 AUSTRALIA - TORRES STRAIT - Darnley Island - Wreck made permanent

Former Notice - 358(T)/2016 is cancelled
Maritime Safety Queensland

Cancel this notice on receipt.

Chart formerly affected - Aus 377 - Aus 840

794(T)/2019 AUSTRALIA - TORRES STRAIT - Kai-Maituine Reef - Wreck salvaged

Former Notice - 84(T)/2016 is cancelled
Maritime Safety Queensland

Cancel this notice on receipt.

Chart formerly affected - Aus 839

795(T)/2019 AUSTRALIA - WESTERN AUSTRALIA - Bedout Island - Seismic survey northwards completed

Former Notice - 452(T)/2019 is cancelled
Santos

Cancel this notice on receipt.

Chart formerly affected - Aus 325 - Aus 326 - Aus 739 - Aus 4722 (INT 722)

796(T)/2019 AUSTRALIA - WESTERN AUSTRALIA - Bedout Islet - Drill rig northwestwards

MODU *Noble Tom Prosser*

Drill Rig *Noble Tom Prosser* is conducting drilling operations in position 19° 01'.82 S 118° 43'.57 E.

Chart temporarily affected - Aus 326 - Aus 739 - Aus 4722 (INT 722)

797(T)/2019 AUSTRALIA - WESTERN AUSTRALIA - Bedout Islets - Drill rig northwestwards moved

Former Notice - 613(T)/2019 is cancelled
MODU *Noble Tom Prosser*

Cancel this notice on receipt.

Chart formerly affected - Aus 325 - Aus 326 - Aus 739 - Aus 4722 (INT 722)

798(T)/2019 AUSTRALIA - WESTERN AUSTRALIA - Cliff Head - Seismic survey completed

Former Notice - 500(T)/2019 is cancelled
Department of Transport WA

Cancel this notice on receipt.

Chart formerly affected - Aus 752

799(T)/2019 AUSTRALIA - WESTERN AUSTRALIA - Dampier - Conzinc Island to Mermaid Strait - Shoaling charted
Former Notice - 777(P)/2016 is cancelled
 Australian Hydrographic Office

Cancel this notice on receipt.

Chart formerly affected - Aus 57 - Aus 58 - Aus 60 - Aus 741 - Aus 742

800(T)/2019 AUSTRALIA - WESTERN AUSTRALIA - Fremantle - Dredging operations
 Fremantle Ports Notice 2/2018

The dredger *Modi-R* will be undertaking dredging operations in area bounded by the following positions:

32° 08'.33 S 115° 42'.20 E

32° 08'.27 S 115° 42'.40 E

32° 03'.60 S 115° 41'.34 E

32° 03'.63 S 115° 41'.13 E.

Mariners are advised to navigate with caution in the area.

Chart temporarily affected - Aus 112 - Aus 113 - Aus 117 - Aus 754

801(T)/2019 AUSTRALIA - WESTERN AUSTRALIA - Fremantle - Dredging operations
Former Notice - 537(T)/2018 is cancelled
 Fremantle Ports Notice 2/2018

Cancel this notice on receipt.

Chart formerly affected - Aus 112 - Aus 113 - Aus 114 - Aus 117 - Aus 754

802(T)/2019 AUSTRALIA - WESTERN AUSTRALIA - Glomar Shoal - Platform unlit westwards
 Australian Maritime Safety Authority AUSCOAST 212/19

The *Angel* platform, *Mo(U)15s 10M* (19° 29'.92 S 116° 35'.88 E), is unlit.

Chart temporarily affected - Aus 327 - Aus 741 - Aus 4603 (INT 603) - Aus 4708 (INT 708) - Aus 4722 (INT 722) - Aus 4723 (INT 723)

803(T)/2019 AUSTRALIA - WESTERN AUSTRALIA - Port Hedland - Dredging operations; scientific instrument
Former Notice - 358(T)/2019 is cancelled
 Pilbara Ports Authority Notice PH 5(T)/2019, 15(T)/2019

The dredge *Niccolo Machiavelli*, barges *Arent* and *Le Sphinx* and support vessels are conducting dredging operations in the main shipping channel between positions 20° 06'.43 S 118° 28'.21 E and 19° 58'.80 S 118° 26'.65 E.

All vessels will display appropriate lights and shapes and will monitor VHF Ch 12 and Ch 16.

A special light buoy, *Fl(5)Y.20s*, exists in position 20° 01'.27 S 118° 26'.64 E.

Mariners are advised to navigate with caution in the area.

Chart temporarily affected - Aus 53

804(T)/2019 AUSTRALIA - VICTORIA - Cape Conran - Drill rig southwestwards moved
Former Notice - 675(T)/2019 is cancelled
 Cooper Energy

Cancel this notice on receipt.

Chart formerly affected - Aus 357 - Aus 487 - Aus 4644 (INT 644)

805(T)/2019 AUSTRALIA - VICTORIA - Golden Beach - Drilling operations

AGR (Australia) Pty Ltd

Vessel *Fugro Mariner* is conducting drilling operations in an area bounded by the following positions:

38° 14'.77 S 147° 27'.32 E

38° 14'.10 S 147° 28'.39 E

38° 13'.40 S 147° 30'.31 E

38° 15'.09 S 147° 32'.03 E

38° 15'.74 S 147° 30'.99 E

38° 16'.36 S 147° 28'.92 E.

Mariners are advised to navigate with caution in the area.

Chart temporarily affected - Aus 357 - Aus 487

806(P)/2019 AUSTRALIA - VICTORIA - Lakes Entrance - Reeve Channel - Shoaling

Gippsland Ports Notice 160(P)/2019

Shoaling with a least depth of 1.4m exists in an area between port lateral light buoy, *Fl.R.3s No6* (37° 52'.80 S 147° 57'.57 E), and starboard lateral light buoy, *Fl.G.3s No1A* (37° 52'.81 S 147° 57'.41 E).

Dredging is in progress in the area and the port lateral light buoy, *Fl.R.3s No6*, may be temporarily withdrawn or established in a different position to enable dredging.

Mariners are advised to navigate with caution in the area.

Chart which will be affected - Aus 182

807(T)/2019 AUSTRALIA - VICTORIA - Peterborough - Drill rig southwestwards

Cooper Energy

Drill rig *Ocean Monarch* is conducting drilling operations in position 38° 40'.94 S 142° 49'.65 E.

Chart temporarily affected - Aus 349 - Aus 787 - Aus 4728 (INT 728)

808(T)/2019 AUSTRALIA - VICTORIA - Western Port - Western Channel - Light buoys off station

Victorian Regional Channels Authority Notice 175/2019

The following light buoys are off station:

Position	Remarks
38° 28'.41 S 145° 08'.32 E	<i>Fl.G.2.5s No5</i>
38° 28'.27 S 145° 08'.10 E	<i>Fl.R.2.5s No6</i>
38° 25'.14 S 145° 14'.26 E	<i>Fl.G.5s No15</i>

Chart temporarily affected - Aus 150 - Aus 151

II

HYDROGRAPHIC REPORTS

NIL

III

NAVIGATION WARNINGS

The Australian Hydrographic Office will no longer compile Section III of the Australian Notices to Mariners. For the most up to date navigation warnings please refer to:

AMSA Navigation Warnings

<http://amsa.gov.au/search-and-rescue/distress-and-safety-comms/msi/msi-email/index.asp>

New Zealand Notices to Mariners (Navarea XIV warnings)

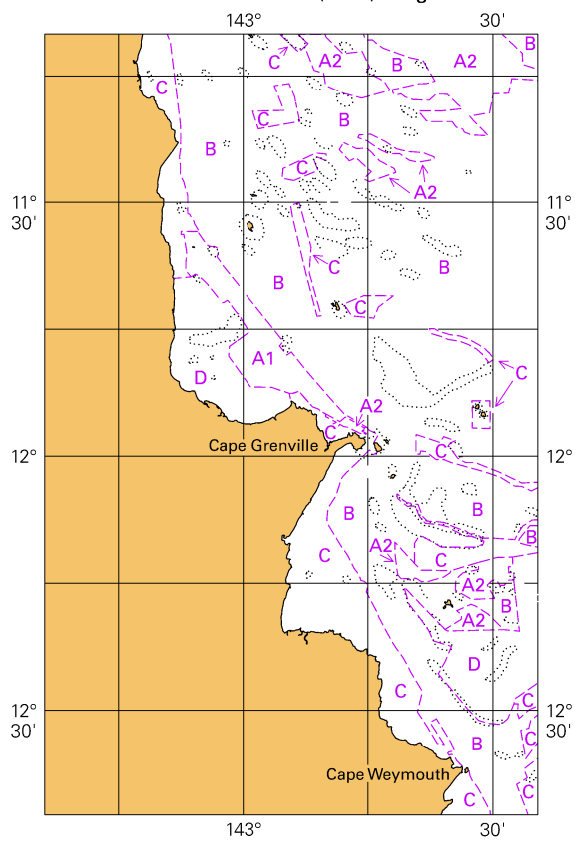
<http://www.linz.govt.nz/sea/maritime-safety/notices-mariners>

Block A for chart Aus 835

(107.6 x 228.7mm)

To accompany Australian Notice to Mariners 769/2019

Zone of Confidence (ZOC) Diagram

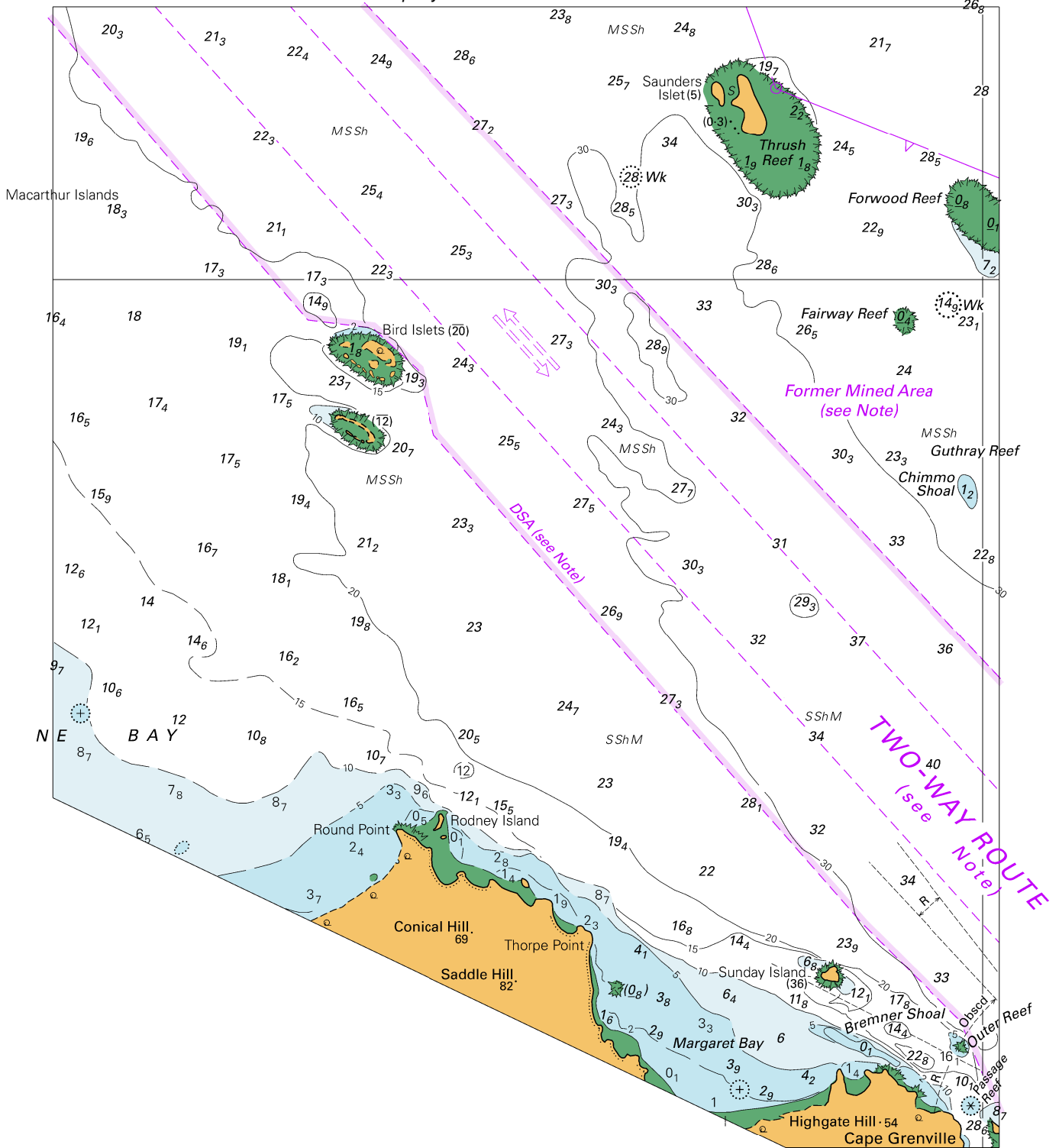


© Commonwealth of Australia 2019

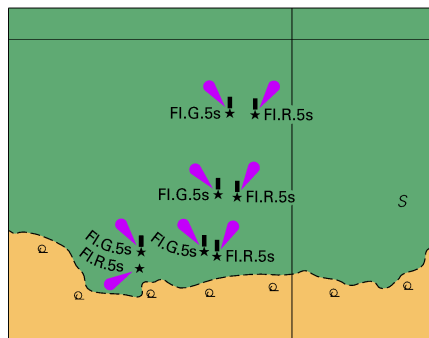
Block C for chart Aus 835

(65.3 x 103.3mm)

To accompany Australian Notice to Mariners 769/2019



To accompany Australian Notice to Mariners 775/2019

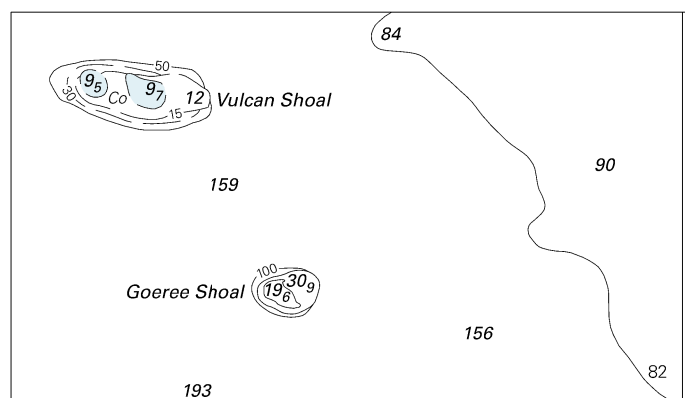


© Commonwealth of Australia 2019

Block for chart Aus 25

(56.7 x 44.0mm)

To accompany Australian Notice to Mariners 780/2019

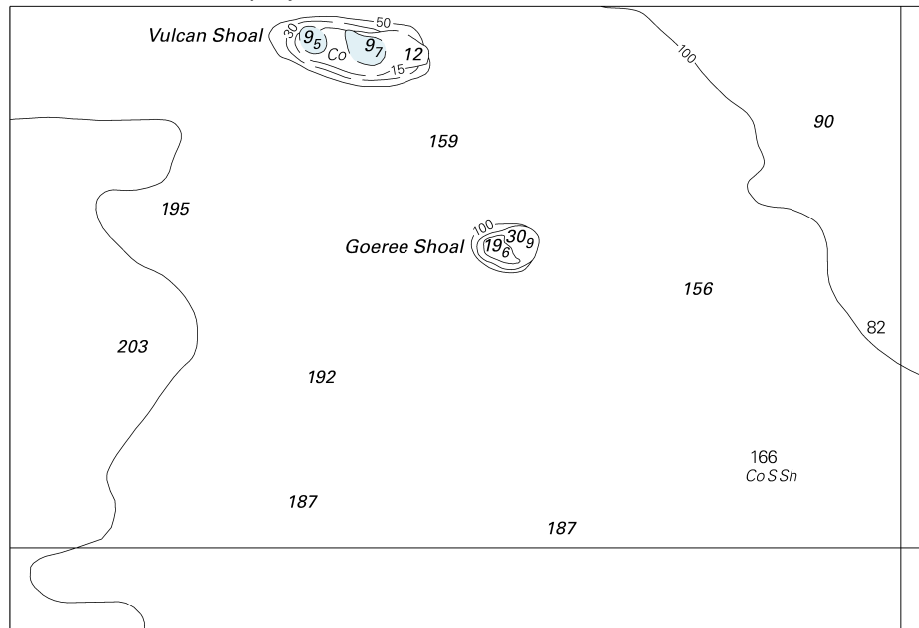


© Commonwealth of Australia 2019

Block for chart Aus 314

(90.1 x 51.3mm)

To accompany Australian Notice to Mariners 780/2019

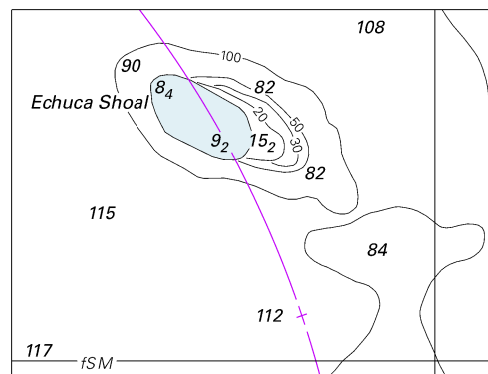


Block A for chart Aus 319

© Commonwealth of Australia 2019

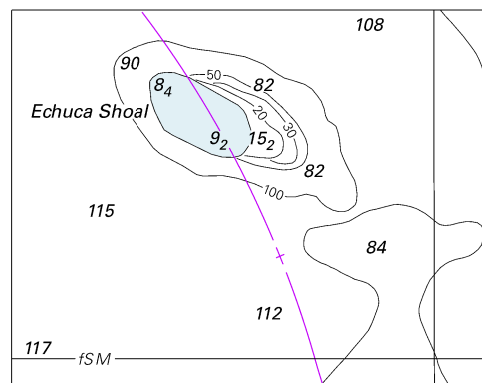
(121.6 x 82.7mm)

To accompany Australian Notice to Mariners 780/2019



© Commonwealth of Australia 2019
Block B for chart Aus 319 (64.2 x 48.5mm)

To accompany Australian Notice to Mariners 780/2019

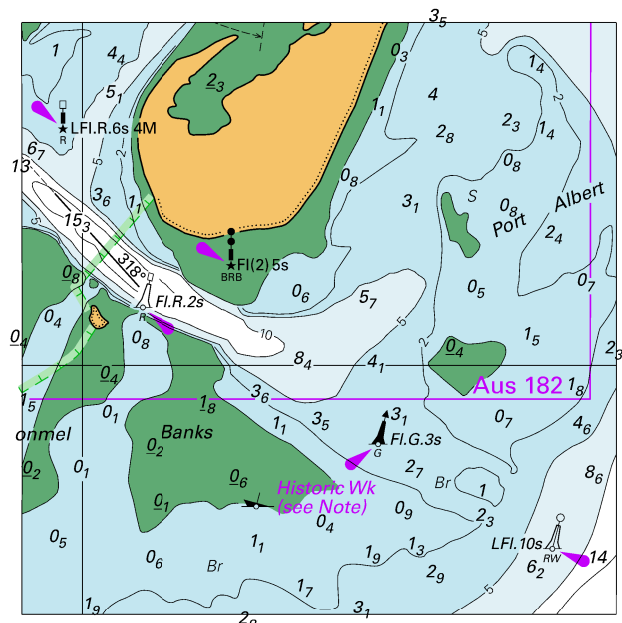


© Commonwealth of Australia 2019

Block for chart Aus 320

(63.5 x 49.5mm)

To accompany Australian Notice to Mariners 782/2019

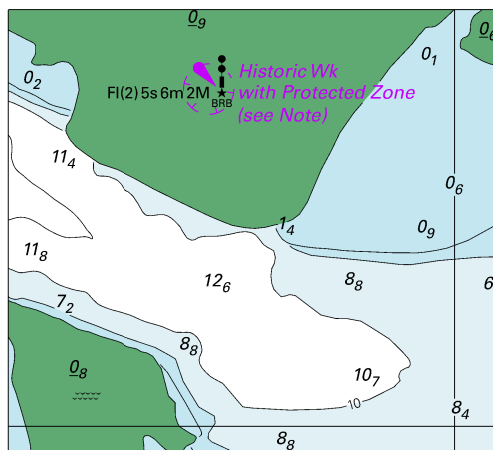


© Commonwealth of Australia 2019

Block for chart Aus 181

(78.6 x 78.2mm)

To accompany Australian Notice to Mariners 782/2019

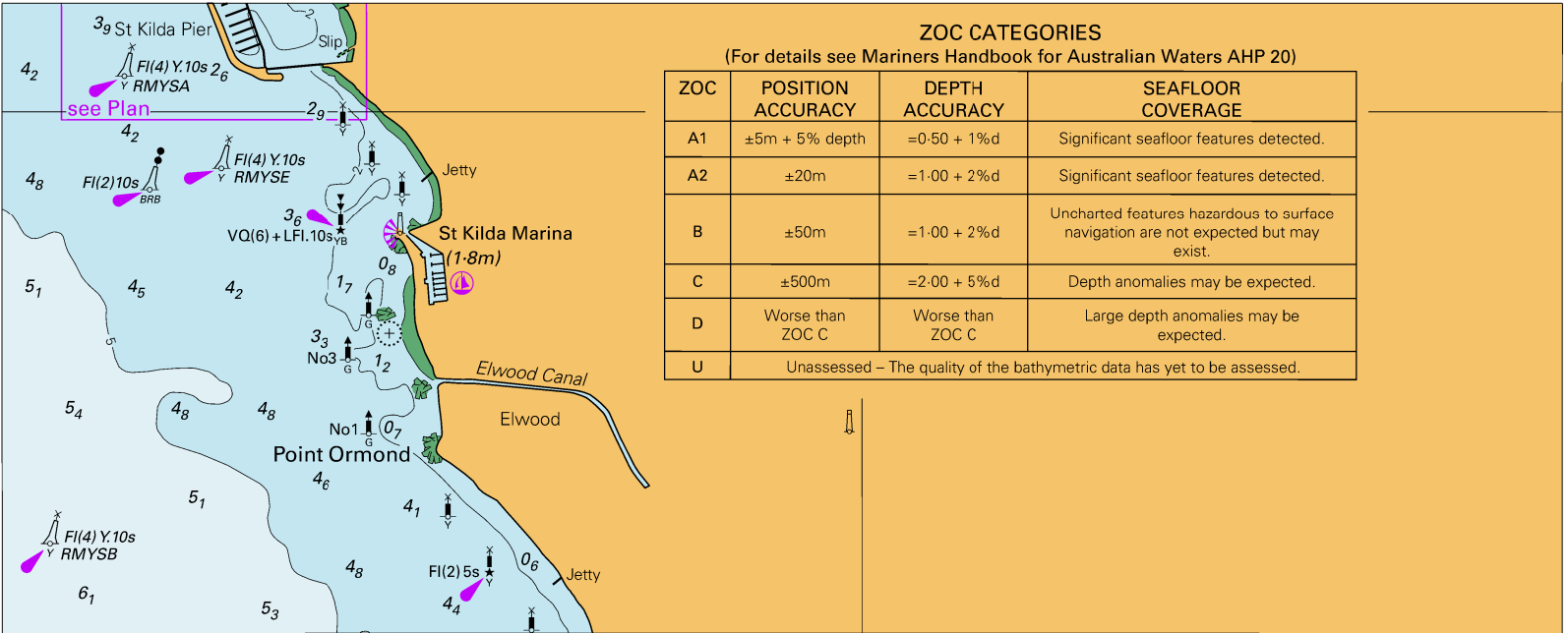


© Commonwealth of Australia 2019

Block for chart Aus 182

(65.0 x 58.4mm)

To accompany Australian Notice to Mariners 783/2019



Block for chart Aus 155

© Commonwealth of Australia 2019

(209.8 x 84.8mm)