

To accompany Australian Notice to Mariners 157/2019

MARINE FARMS

Marine farms, which may be floating or fixed structures and their associated moorings should be avoided. The farms are generally marked by buoys or beacons, which may be lit. Their charted positions are approximate.

Note for chart Aus 20

To accompany Australian Notice to Mariners 157/2019

MARINE FARMS

Marine farms, which may be floating or fixed structures and their associated moorings should be avoided. The farms are generally marked by buoys or beacons, which may be lit. Their charted positions are approximate.

Note for chart Aus 720

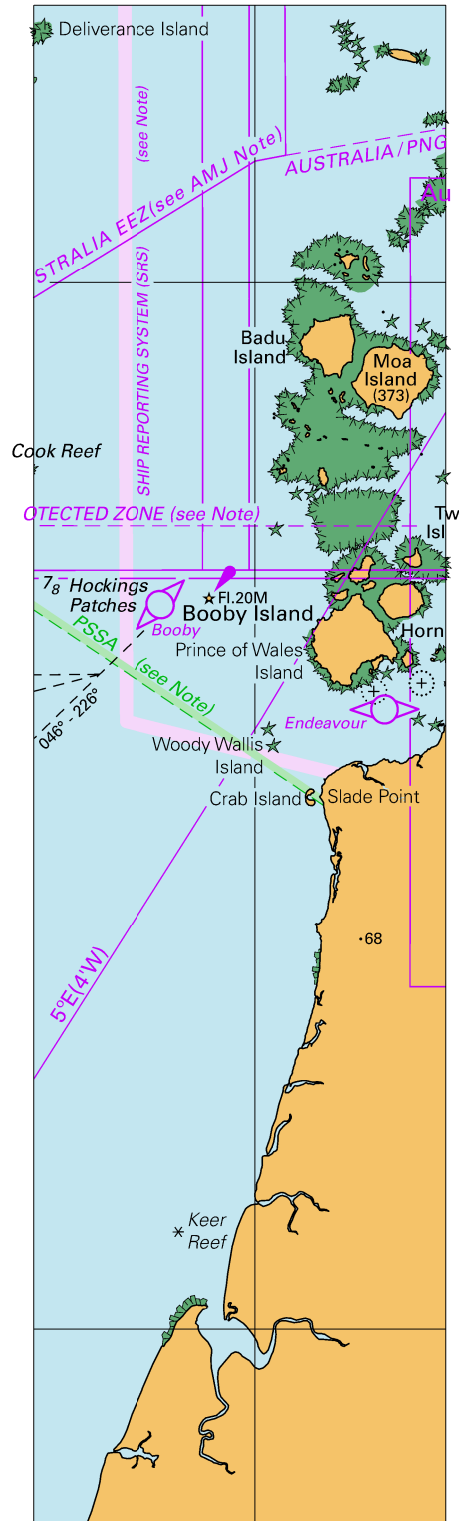
To accompany Australian Notice to Mariners 161/2019

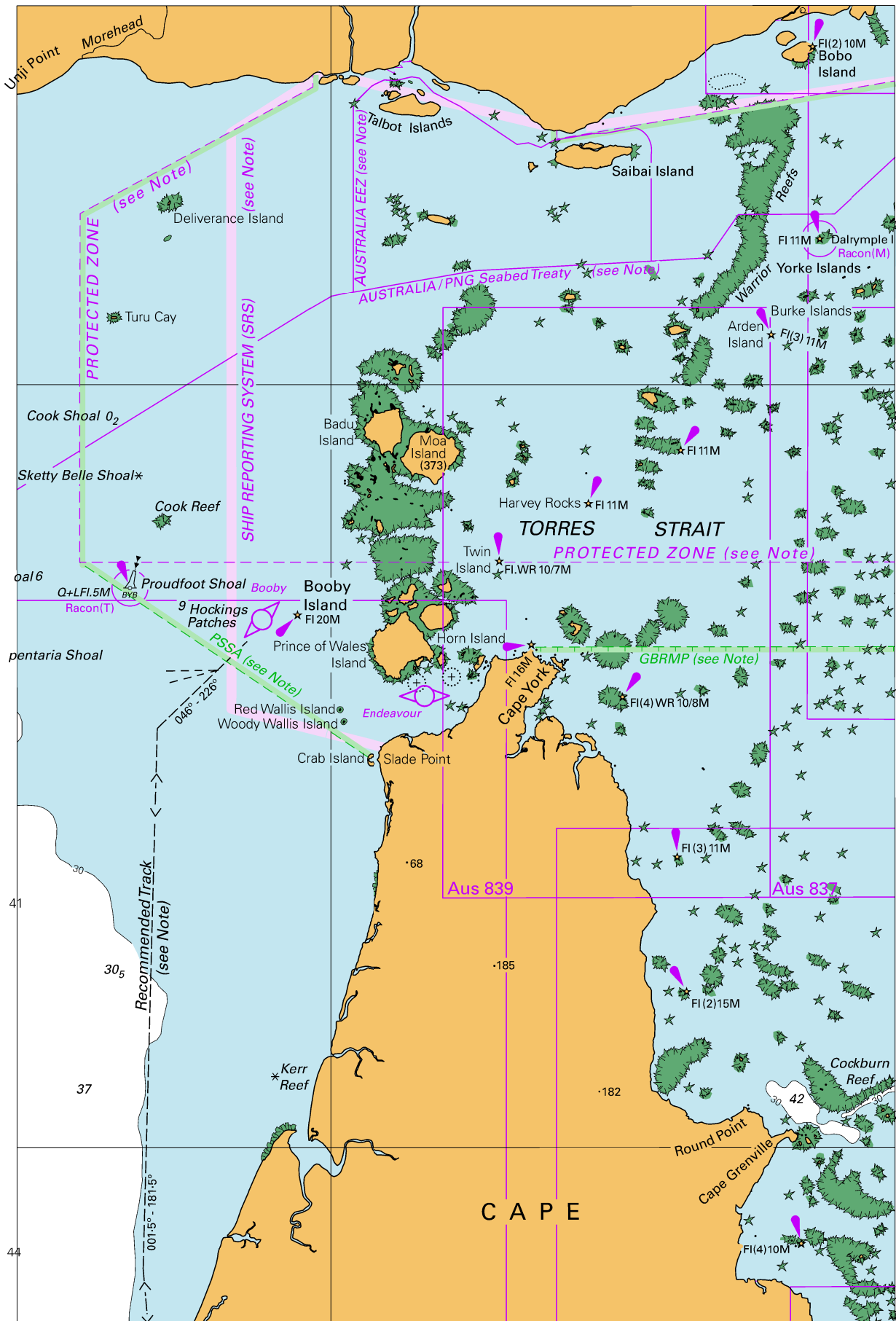
OIL AND GAS PIPELINES

Pipelines carry flammable oil or gas at high pressure. A damaged pipeline could cause an explosion, resulting in damage to a vessel or the environment. Pipelines may pass over bottom undulations, be buried or protrude above the seabed reducing charted depths. Vessels should avoid anchoring, trawling or conducting other underwater operations in the vicinity of the pipelines.

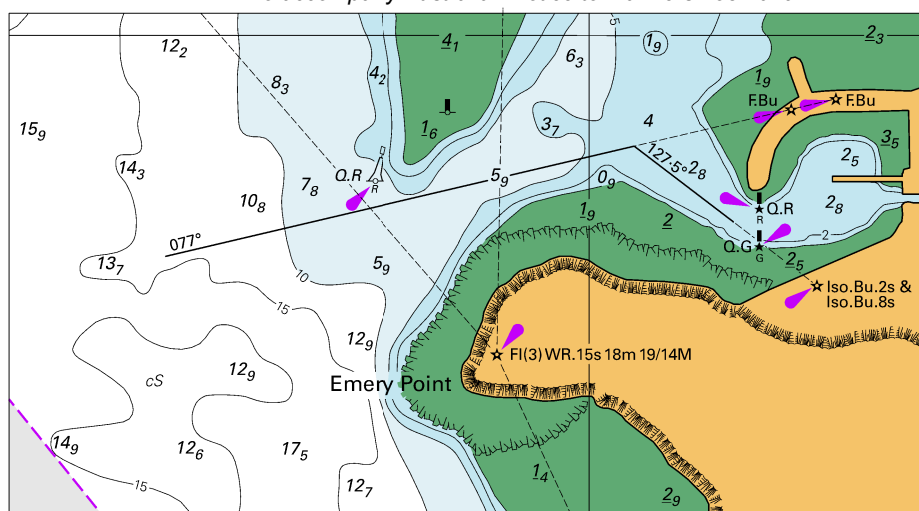
Note for chart Aus 329

To accompany Australian Notice to Mariners 148/2019





To accompany Australian Notice to Mariners 158/2019

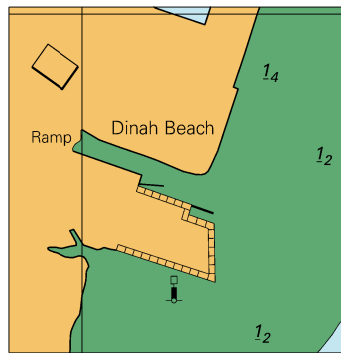


Block A for chart Aus 24

© Commonwealth of Australia 2019

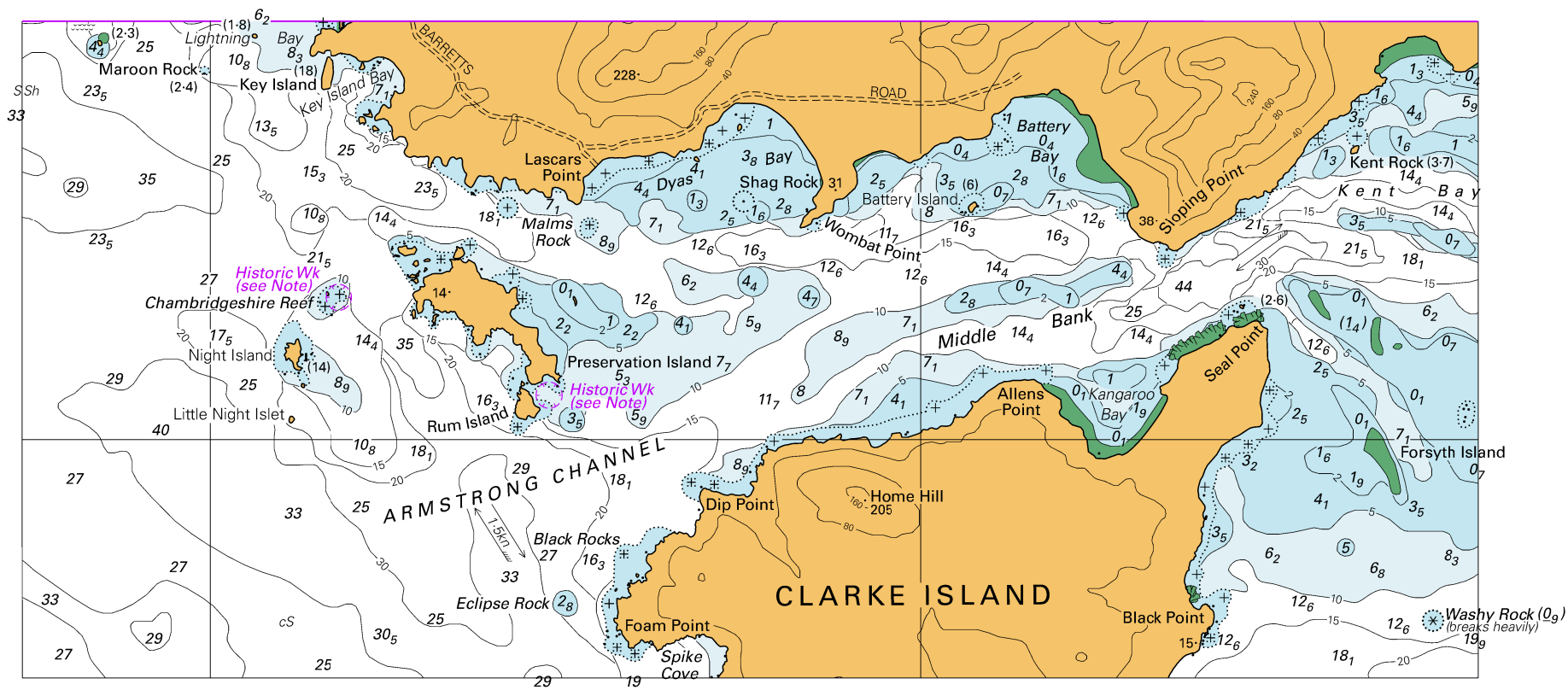
(121.7 x 66.4mm)

To accompany Australian Notice to Mariners 158/2019



Block B for chart Aus 24 (44.6 x 45.6mm)
© Commonwealth of Australia 2019

To accompany Australian Notice to Mariners 165/2019

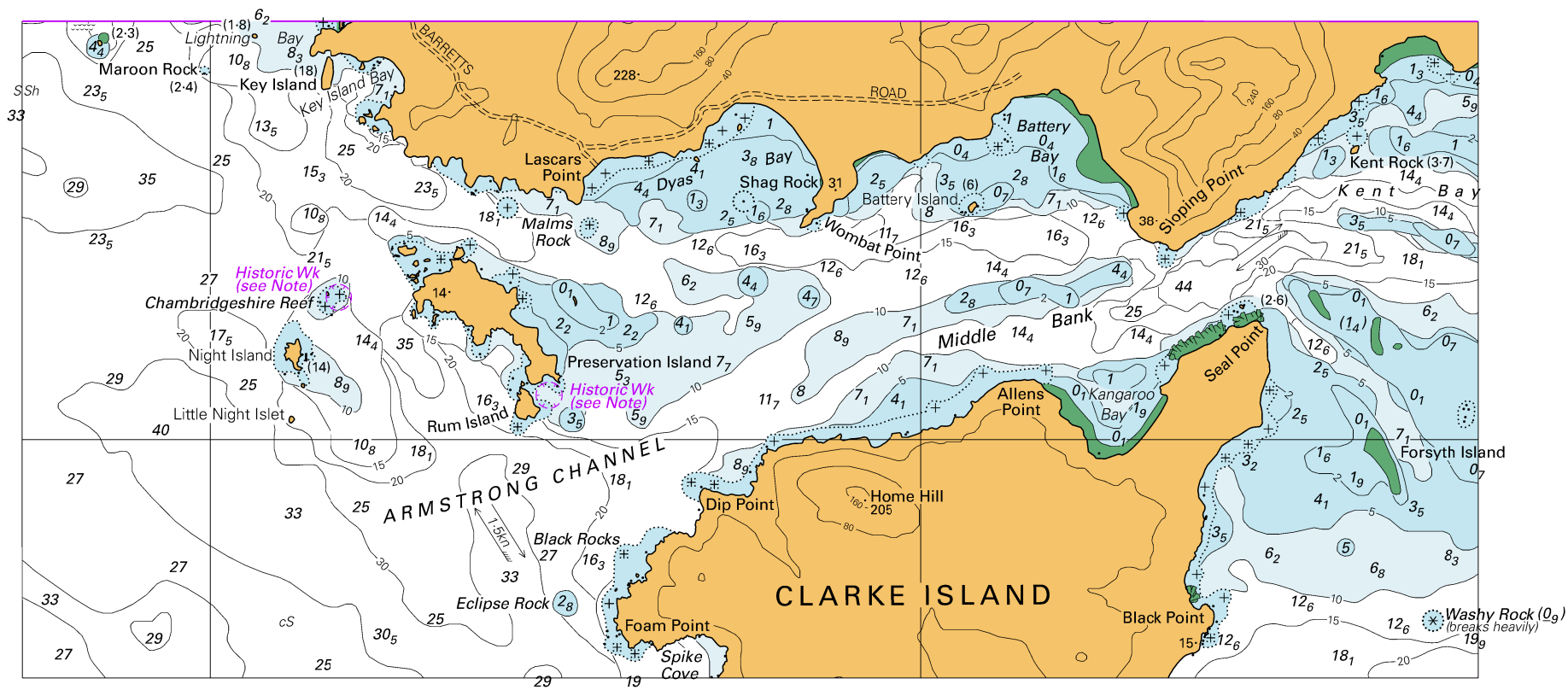


Block for chart Aus 798

© Commonwealth of Australia 2019

(225.5 x 101.7 mm)

To accompany Australian Notice to Mariners 165/2019

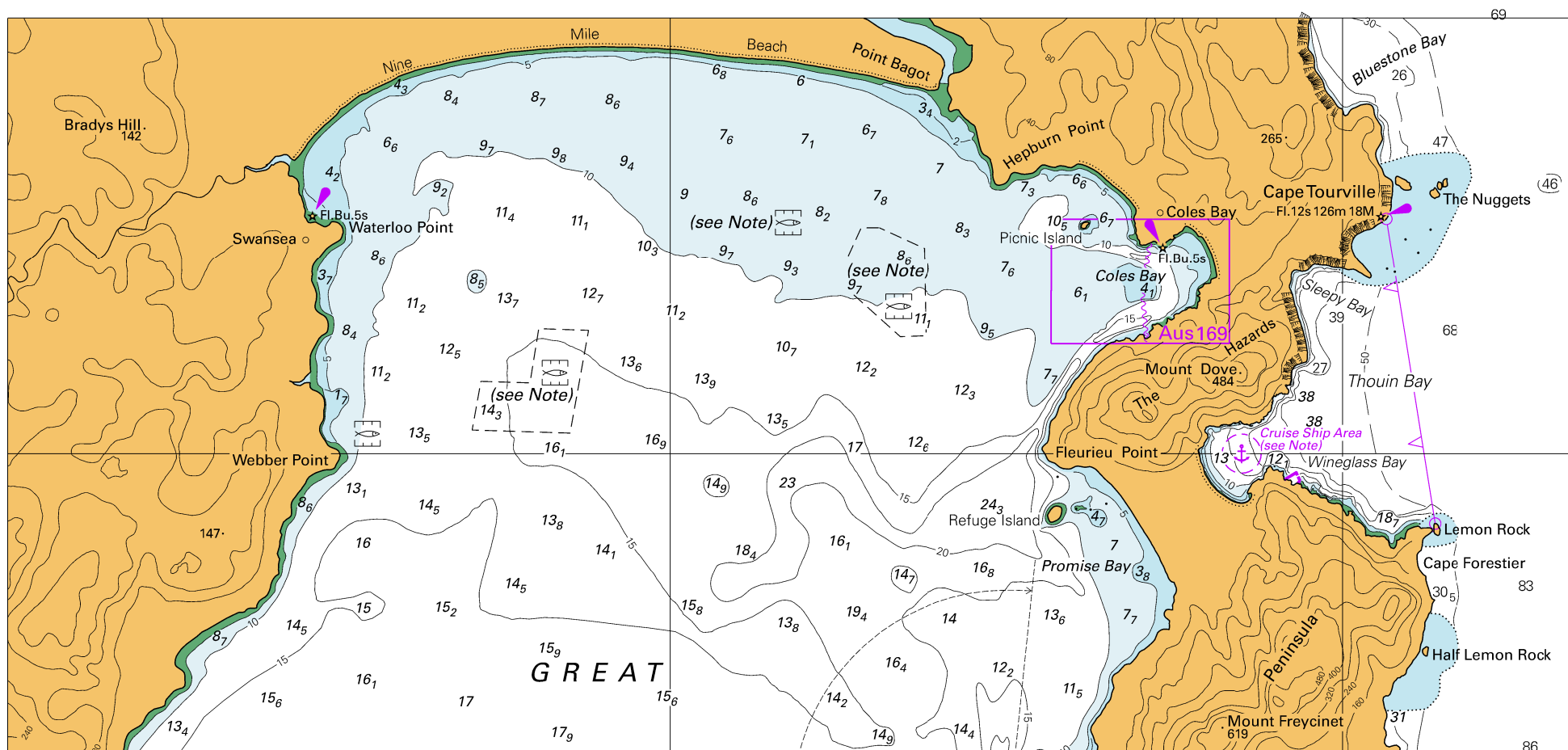


Block for chart Aus 800

© Commonwealth of Australia 2019

(225.5 x 101.7mm)

To accompany Australian Notice to Mariners 167/2019

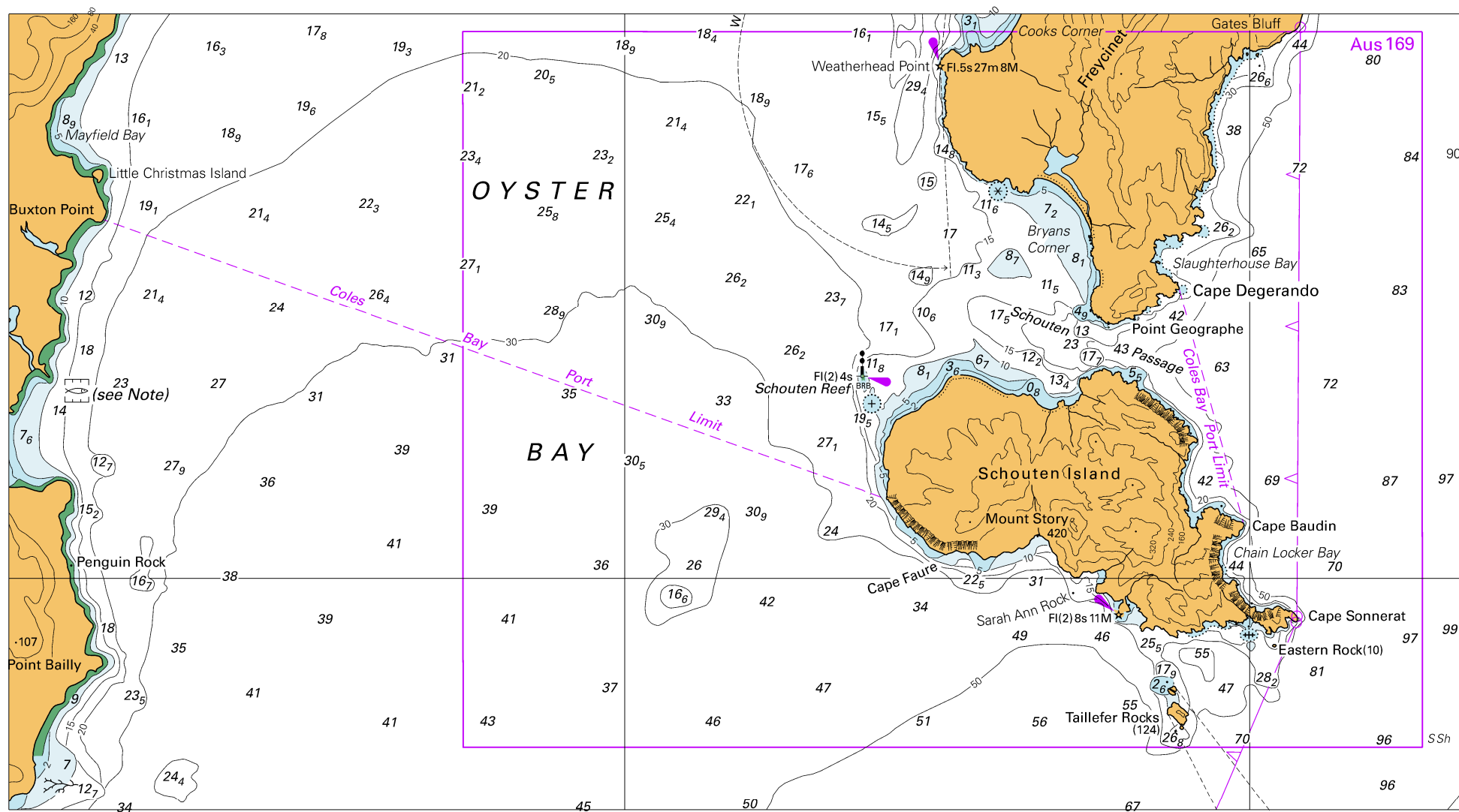


Block A for chart Aus 766

© Commonwealth of Australia 2019

(256.0 x 119.9mm)

To accompany Australian Notice to Mariners 167/2019

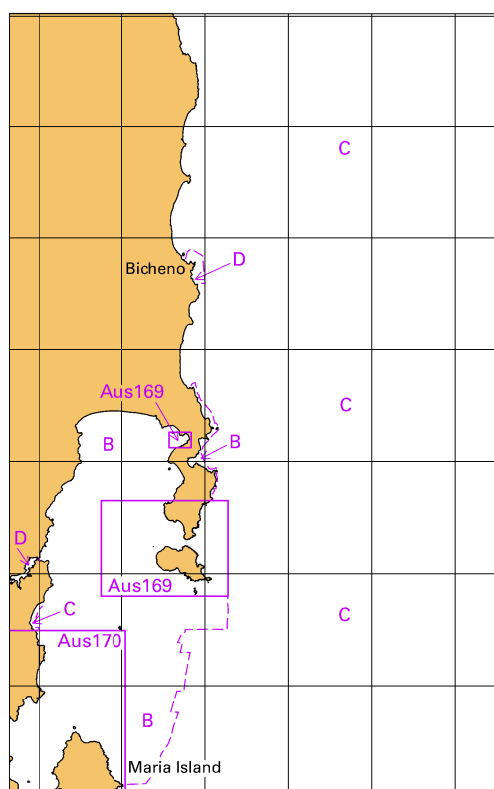


Block B for chart Aus 766

© Commonwealth of Australia 2019

(256.0 x 140.0mm)

To accompany Australian Notice to Mariners 167/2019



© Commonwealth of Australia 2019

Block C for chart Aus 766

(65.3 x 103.3mm)