



23 March 2018

Edition 6

AUSTRALIAN NOTICES TO MARINERS

Notices 229 - 266

Published fortnightly by the Australian Hydrographic Office



Australian Notices to Mariners are the authority for correcting charts and publications published by the Australian Hydrographic Office covering Australia, Papua New Guinea, Solomon Islands, Australian Antarctic Territory and Timor-Leste.

Commodore F.T. FREEMAN RAN
Hydrographer of Australia

SECTIONS.

- I. Australian Notices to Mariners, including blocks and notes.
- II. Hydrographic Reports.
- III. Navigational Warnings.

SUPPLEMENTS.

- I. Tracings
- II. Cumulative List of Australian Notices to Mariners.
- III. Cumulative List of Temporary and Preliminary Australian Notices to Mariners.
- IV. Temporary and Preliminary Notices in force.
- V. Amendments to Admiralty List of Lights and Fog Signals (Vol K), Radio Signals (NP 281(2), 282, 283(2), 285, 286(4)) and Sailing Directions (NP 9, 13, 14, 15, 33, 34, 35, 36, 39, 44, 51, 60, 61, 62, 100, 136).

© Commonwealth of Australia 2018

This work is copyright. Apart from any use permitted under the Copyright Act 1968, no part may be reproduced by any process, adapted, communicated or commercially exploited without prior written permission from The Commonwealth represented by the Australian Hydrographic Office.

IMPORTANT NOTICE

This edition of Notices to Mariners includes all significant information affecting AHO products which the AHO has become aware of since the last edition. All reasonable efforts have been made to ensure the accuracy and completeness of the information, including third party information, on which these updates are based. The AHO regards third parties from which it receives information as reliable, however the AHO cannot verify all such information and errors may therefore exist. The AHO does not accept liability for errors in third party information.

GENERAL INSTRUCTIONS

The substance of these notices should be inserted on the charts affected.

Bearings are referred to the true compass and are reckoned clockwise from North; those relating to lights are given as seen by an observer from seaward.

Positions quoted in notices relate to WGS84 which is the horizontal datum for all charts produced by the Australian Hydrographic Office.

The range quoted for a light is its nominal range.

Depths are with reference to the chart datum of each chart. Heights are above mean high water springs or mean higher high water, as appropriate.

The capital letter (P) or (T) after the number of any notice denotes a preliminary or temporary notice respectively, which are contained separately at the end of the permanent notices.

REPORTING OF DANGERS

Mariners are particularly requested to notify the AUSTRALIAN HYDROGRAPHIC OFFICE, Locked Bag 8801 Wollongong, NSW 2500 (Fax 02-4223 6599, e-mail datacentre@hydro.gov.au or, alternatively by filling in and submitting the [Hydrographic Notes](#) forms located on the web site – www.hydro.gov.au), immediately on the discovery of new dangers or suspected dangers to navigation. For changes or defects in aids to navigation notify AusSAR (Fax 02-6230 6868 or email rccaus@amsa.gov.au).

AUTHORISED USE

Copies of Australian notices are available free of charge from the Australian Hydrographic Office (AHO) website (www.hydro.gov.au) and through the eNotices (email) service (www.hydro.gov.au/enotices/enotices.htm).

Individual Notices may be copied for the purpose of inserting Notice substance on official charts and publications. Paper copies may be printed by chart agents and distributed to customers on a cost recovery basis. Participating chart agents are listed on the AHO website as providing a 'Paper Notices to Mariners' service (www.hydro.gov.au/webapps/jsp/agents/agents-list.jsp). Copies of the notices may not be sold for profit without prior written agreement.

NUMERICAL INDEX OF NOTICES TO MARINERS

Edition No 6

Notices	Aus Chart, INT Chart, ENC Cell, AHP, BA Pubs
229	Aus 5000, 5001
230	SLB 101
231	Amendment to Seafarers Handbook for Australian Waters - 4th Edition
232	Aus 198
233	Aus 197, 200
234	Aus 201
235	Aus 236, 237
236	Aus 237, 238, 242, 243, 244, 245, 246, 249, 250, 265, 271, 272
237	Aus 270
238	Aus 618
239	Aus 247, 819, 820
240	Aus 826, 827, 828, 829
241	Aus 252, 253
242	Aus 614, 4621, INT 621
243	Aus 281, 834
244	Aus 109
245	Aus 32
246	Aus 155
247	Aus 152
248	Aus 172
249	SLB 301, 302
250(T)	Aus 242
251(T)	Aus 264
252(T)	Aus 230
253(T)	Aus 236
254(T)	Aus 249, 251, 823, 824
255(T)	Aus 4, 301, 701
256(T)	Aus 24, 25, 26, 309, 722
257(T)	Aus 26, 28
258(T)	Aus 112, 400, 608, 754, 4708, 4709, 4723, 4725, INT 708, 709, 723, 725
259(T)	Aus 328
260(T)	Aus 112, 754
261(T)	Aus 182
262(T)	Aus 155
263(T)	Aus 164
264(T)	Aus 798, 800
265(T)	Aus 167
266(T)	Aus 790

NUMERICAL INDEX OF CHARTS AFFECTED

Edition No 6

Aus Chart	Notices
Aus 4	255(T)
Aus 24	256(T)
Aus 25	256(T)
Aus 26	256(T), 257(T)
Aus 28	257(T)
Aus 32	245
Aus 109	244
Aus 112	258(T), 260(T)
Aus 152	247
Aus 155	246, 262(T)
Aus 164	263(T)
Aus 167	265(T)
Aus 172	248
Aus 182	261(T)
Aus 197	233
Aus 198	232
Aus 200	233
Aus 201	234
Aus 230	252(T)
Aus 236	235, 253(T)
Aus 237	235, 236
Aus 238	236
Aus 242	236, 250(T)
Aus 243	236
Aus 244	236
Aus 245	236
Aus 246	236
Aus 247	239
Aus 249	236, 254(T)
Aus 250	236
Aus 251	254(T)
Aus 252	241
Aus 253	241
Aus 264	251(T)
Aus 265	236
Aus 270	237
Aus 271	236
Aus 272	236
Aus 281	243
Aus 301	255(T)
Aus 309	256(T)
Aus 328	259(T)
Aus 400	258(T)
Aus 608	258(T)
Aus 614	242
Aus 618	238
Aus 701	255(T)
Aus 722	256(T)
Aus 754	258(T), 260(T)
Aus 790	266(T)
Aus 798	264(T)
Aus 800	264(T)
Aus 819	239
Aus 820	239

Aus Chart	Notices
Aus 823	254(T)
Aus 824	254(T)
Aus 826	240
Aus 827	240
Aus 828	240
Aus 829	240
Aus 834	243
Aus 4621	242
Aus 4708	258(T)
Aus 4709	258(T)
Aus 4723	258(T)
Aus 4725	258(T)
Aus 5000	229
Aus 5001	229
SLB 101	230
SLB 301	249
SLB 302	249

INT Chart	Notices
INT 621	242
INT 708	258(T)
INT 709	258(T)
INT 723	258(T)
INT 725	258(T)

229 AUSTRALIA - Products - New Charts, New Editions, Withdrawn Charts

Australian Hydrographic Service

New Charts

Chart	Title and Geographical limits	Scale	Publication Date	Remarks
NIL				

New Electronic Navigation Chart (Aus ENC)

Cell Name	Title	Publication Date	Remarks
NIL			

New Editions and Withdrawn Charts

Chart	Title	Scale	Publication Date	Remarks
Aus 5000	Australian Index of Nautical Charts - Northern Portion 2018		22 February 2018	Aus 5000 2017 withdrawn
Aus 5001	Australian Index of Nautical Charts - Southern Portion 2018		22 February 2018	Aus 5001 2017 withdrawn

Admiralty publication

NP No	Title	Date	Remarks
NP282(2)	Admiralty List of Radio Signals. Radio Aids to Navigation, Differential GPS (DGPS), Legal Time, Radio Time Signals and Electronic Position Fixing System. The Americas, Far East and Oceania.	29/3/2018	The 2017/2018 Edition of NP282 is cancelled.

Chart permanently withdrawn

Charts listed above as withdrawn no longer meet chart carriage requirements and should be marked as "superseded" and replaced with the new chart/ new edition listed prior to passage through the area covered by the new chart.

When placing orders with a chart agent between notice of forthcoming edition and its publication, mariners should advise whether their order pertains to the current edition or the new edition.

For further details refer to the AHS website at www.hydro.gov.au for new edition and new chart stock arrival information.

230 AUSTRALIA - Products- New Charts and New Editions to be published shortly

Australian Hydrographic Service

New Charts to be published shortly

Chart	Title	Scale	Expected Publication Date	Remarks
NIL				

New Editions to be published shortly

Chart	Title	Scale	Expected Publication Date	Remarks
SLB 101	South Pacific Ocean - Solomon Islands - Anchorages in Guadalcanal Island Plans: Honiara Lungga Roads Marau Sound	1:5 000 1:20 000 1:50 000	6th April 2018	New Edition to incorporate latest bathymetric data.

231 AUSTRALIA - Product - Amendment to Seafarers Handbook for Australian Waters - 4th Edition
Department of Transport WA

Chapter 12 – Western Australia Port Table - Barrow Island 12.10.2 page 254

Replace table with accompanying block

Chapter 12 – Western Australia Port Table - Derby - 12.10.2 page 256

Delete Harbour Masters/Deputy Harbour Masters contact details including fax

Chapter 12 – Western Australia Port Table - 12.10.2 pages 255, 257, 258

Replace pages with accompanying block

232 AUSTRALIA - NEW SOUTH WALES - Botany Bay - Kogarah Bay - Infrastructure
Australian Geospatial-Intelligence Organisation

Aus 198 [94/2018]

Insert accompanying block 34° 00'.15 S 151° 07'.24 E

233* AUSTRALIA - NEW SOUTH WALES - North Head - Obstruction; historic wreck eastwards
Port Authority of New South Wales , Scott Willan , Office of Environment and Heritage NSW

Aus 197 [892/2017]

Insert depth, 53m, enclosed by danger circle, with legend *Obstrn* 33° 48'.89 S 151° 20'.59 E
depth, 64m, enclosed by danger circle, with magenta legend *Historic Wk* 33° 49'.67 S 151° 20'.51 E
(see Note)

Aus 200 [49/2018]

Insert depth, 53m, enclosed by danger circle, with legend *Obstrn* 33° 48'.888 S 151° 20'.594 E
depth, 64m, enclosed by danger circle, with magenta legend *Historic Wk* 33° 49'.668 S 151° 20'.508 E
(see Note)

234 AUSTRALIA - NEW SOUTH WALES - Port Jackson - Middle Harbour - Infrastructure
Clontarf Marina

Aus 201 [190/2018]

Insert accompanying block 33° 48'.25 S 151° 14'.90 E

235 AUSTRALIA - QUEENSLAND - Brisbane River - Entrance Channel - Navline
Maritime Safety Queensland Notice 148/2017

Aus 236 [97/2018]

Insert a dashed line in a direction 124·1° for a distance of 1200m, thence a continuous line for 5600m, with legend 304·1°, emanating from light beacon 27° 20'.00 S 153° 11'.50 E

Delete dashed and continuous line with legend 305°, emanating from light beacon 27° 20'.0 S 153° 11'.5 E

Aus 237 [192/2018]

Insert a dashed line in a direction 124·1° for a distance of 1200m, thence a continuous line for 1520m, with legend 304·1°, emanating from light beacon 27° 19'.997 S 153° 11'.501 E

Delete dashed and continuous line with legend 305°, emanating from light beacon 27° 20'.00 S 153° 11'.50 E

236 AUSTRALIA - QUEENSLAND - Brisbane River to Mackay - Chart note

Australian Hydrographic Office

Aus 237 [235/2018]

Insert	accompanying note	27° 22'.65 S	153° 08'.17 E
--------	-------------------	--------------	---------------

Aus 238 [142/2018]

Insert	accompanying note	27° 25'.40 S	153° 04'.85 E
--------	-------------------	--------------	---------------

Aus 242 (plan, Port Bundaberg) [143/2018]

Insert	accompanying note in N border	24° 45'.00 S	152° 25'.30 E
--------	-------------------------------	--------------	---------------

Aus 243 [1063/2017]

Insert	accompanying note	24° 56'.60 S	152° 24'.80 E
--------	-------------------	--------------	---------------

Aus 244 [1010/2017]

Insert	accompanying note	23° 51'.13 S	151° 14'.15 E
--------	-------------------	--------------	---------------

Aus 245 [193/2018]

Insert	accompanying note	23° 53'.20 S	151° 09'.30 E
--------	-------------------	--------------	---------------

Aus 246 [1010/2017]

Insert	accompanying note	24° 00'.80 S	151° 20'.20 E
--------	-------------------	--------------	---------------

Aus 249 [5/2018]

Insert	accompanying note	21° 15'.00 S	149° 10'.50 E
--------	-------------------	--------------	---------------

Aus 250 (plan, Mackay Harbour) [5/2018]

Insert	accompanying note in N border	21° 05'.14 S	149° 14'.75 E
--------	-------------------------------	--------------	---------------

Aus 265 [98/2018]

Insert	accompanying note	23° 35'.40 S	150° 53'.90 E
--------	-------------------	--------------	---------------

Aus 271 [193/2018]

Insert	accompanying note	23° 47'.47 S	151° 13'.50 E
--------	-------------------	--------------	---------------

Aus 272 [193/2018]

Insert	accompanying note	23° 45'.55 S	151° 11'.65 E
--------	-------------------	--------------	---------------

237 AUSTRALIA - QUEENSLAND - Cooktown - Depths; ZOC diagram

Maritime Safety Queensland

Aus 270 (plan, Cooktown) [958/2017]

Insert	accompanying block A	15° 27'.7 S	145° 15'.3 E
--------	----------------------	-------------	--------------

Replace	Cooktown ZOC diagram with accompanying block B in N border	15° 26'.9 S	145° 15'.9 E
---------	--	-------------	--------------

238 AUSTRALIA - QUEENSLAND - Coral Sea - Middleton Reef - Wreck

Parks Australia

Aus 618 (plan, Middleton Reef) [933/2009]

Delete	stranded wreck	29° 26'.97 S	159° 03'.39 E
--------	----------------	--------------	---------------

239 AUSTRALIA - QUEENSLAND - Double Head - Rock

Maritime Safety Queensland

Aus 247 [818/2017]

Replace	rock which covers and uncovers, with legend (<u>0</u> ₃), with underwater rock, with legend (2 _g)	23° 09'.1 S	150° 47'.8 E
---------	--	-------------	--------------

Aus 819 [1064/2017]

Replace	depth 4 ₁ m, enclosed by contour, with underwater rock, enclosed by danger circle, with legend (2 _g)	23° 09'.1 S	150° 47'.8 E
---------	---	-------------	--------------

Aus 820 [447/2017]

Replace	depth 4 ₁ m, enclosed by contour, with underwater rock, enclosed by danger circle, with legend (2 _g)	23° 09'.1 S	150° 47'.8 E
---------	---	-------------	--------------

240 AUSTRALIA - QUEENSLAND - Fork Reef to Hall-Thompson Reef - Depths

LADS Flight

Aus 826 [820/2017]

Insert	depth, 3 ₅ m, enclosed by contour	18° 38'.12 S	147° 32'.56 E
	depth, 4 ₉ m, enclosed by contour	18° 38'.70 S	147° 29'.85 E
	depth, 4 ₉ m, enclosed by contour	18° 36'.26 S	147° 27'.35 E

Delete	depth, 20m, and enclosing contour	18° 38'.9 S	147° 29'.9 E
--------	-----------------------------------	-------------	--------------

Aus 827 [1073/2017]

Insert	depth, 3 ₅ m, enclosed by contour	18° 38'.12 S	147° 32'.56 E
	depth, 4 ₉ m, enclosed by contour	18° 38'.70 S	147° 29'.85 E
	depth, 4 ₉ m, enclosed by contour	18° 36'.26 S	147° 27'.35 E

Delete	depth, 20m, and enclosing contour	18° 38'.9 S	147° 29'.9 E
--------	-----------------------------------	-------------	--------------

Aus 828 [1071/2017]

Insert	depth, 4 ₉ m, enclosed by contour	18° 38'.70 S	147° 29'.85 E
	depth, 4 ₉ m, enclosed by contour	18° 36'.26 S	147° 27'.35 E
	depth, 5 ₂ m, enclosed by contour	18° 33'.78 S	147° 28'.39 E
	depth, 8 ₃ m, enclosed by contour	18° 29'.40 S	147° 06'.94 E
	depth, 5 ₄ m, enclosed by contour	18° 27'.25 S	147° 02'.27 E
	depth, 5 ₉ m, enclosed by contour	18° 15'.27 S	146° 56'.68 E
	depth, 6 ₇ m, enclosed by contour	18° 08'.74 S	146° 58'.70 E
	depth, 6 ₄ m, enclosed by contour	18° 04'.73 S	146° 52'.61 E
	depth, 8 ₆ m, enclosed by contour	18° 04'.95 S	146° 52'.22 E
	depth, 5 ₂ m, enclosed by contour	18° 04'.71 S	146° 49'.58 E
	depth, 10 ₂ m, enclosed by contour	17° 59'.14 S	146° 50'.21 E
	depth, 12 ₄ m, enclosed by contour	17° 59'.34 S	146° 53'.65 E
	depth, 3 ₇ m, enclosed by contour	18° 02'.91 S	146° 31'.29 E
	depth, 7 ₅ m, enclosed by contour	18° 00'.04 S	146° 37'.85 E

Replace	depth, 28 ₂ m, with depth, depth, 20 ₈ m	18° 29'.2 S	147° 25'.6 E
	depth, 3 ₆ m, with depth, 1 ₁ m	18° 32'.2 S	147° 08'.6 E
	depth, 5 ₄ m, with depth, 3 ₉ m, enclosed by contour	18° 25'.5 S	147° 05'.0 E
	depth, 13 ₁ m, with depth, depth, 9 ₆ m	18° 16'.4 S	146° 55'.9 E
	depth, 18 ₇ m, with depth, 15 ₃ m	18° 12'.8 S	146° 55'.3 E
	depth, 19 ₇ m, with depth, 11 ₅ m	18° 03'.4 S	146° 48'.4 E
	depth, 14 ₇ m, with depth, 1 ₂ m	18° 01'.6 S	146° 46'.3 E
	depth, 14 ₇ m, with depth, 9 ₄ m	18° 01'.3 S	146° 48'.3 E
	depth, 6 ₇ m, with depth, 4 ₆ m	18° 00'.7 S	146° 32'.9 E
	depth, 27 ₇ m, with depth, 14 ₃ m, enclosed by contour	17° 58'.3 S	146° 34'.7 E
	depth, 8 ₂ m, with depth, 3m	17° 54'.2 S	146° 33'.2 E

Delete	depth, 20m, and enclosing contour	18° 38'.9 S	147° 29'.9 E
	depth, 19 ₂ m	18° 33'.9 S	147° 28'.7 E
	depth, 25 ₂ m	18° 29'.6 S	147° 07'.0 E
	depth, 39m	18° 08'.5 S	146° 58'.8 E
	depth, 49m	18° 04'.9 S	146° 52'.7 E
	depth, 20 ₇ m	18° 05'.1 S	146° 52'.0 E
	depth, 50m	17° 59'.3 S	146° 50'.5 E

Aus 829 [1066/2017]

Insert	depth, 6 ₇ m, enclosed by contour	18° 08'.74 S	146° 58'.70 E
	depth, 6 ₄ m, enclosed by contour	18° 04'.73 S	146° 52'.61 E
	depth, 8 ₆ m, enclosed by contour	18° 04'.95 S	146° 52'.22 E
	depth, 5 ₂ m, enclosed by contour	18° 04'.71 S	146° 49'.58 E
	depth, 10 ₂ m, enclosed by contour	17° 59'.14 S	146° 50'.21 E
	depth, 12 ₄ m, enclosed by contour	17° 59'.34 S	146° 53'.65 E

240 AUSTRALIA - QUEENSLAND - Fork Reef to Hall-Thompson Reef - Depths			
	depth, 3 ₇ m, enclosed by contour	18° 02'.91 S	146° 31'.29 E
	depth, 7 ₅ m, enclosed by contour	18° 00'.04 S	146° 37'.85 E
	depth, 4 ₈ m, enclosed by contour	17° 52'.96 S	146° 33'.45 E
	depth, 9 ₃ m, enclosed by contour	17° 44'.85 S	146° 29'.22 E
Replace	depth, 19 ₇ m, with depth, 11 ₅ m	18° 03'.4 S	146° 48'.4 E
	depth, 14 ₇ m, with depth, 1 ₂ m	18° 01'.6 S	146° 46'.3 E
	depth, 14 ₇ m, with depth, 9 ₄ m	18° 01'.3 S	146° 48'.3 E
	depth, 6 ₇ m, with depth, 4 ₆ m	18° 00'.7 S	146° 32'.9 E
	depth, 27 ₇ m, with depth, 14 ₃ m, enclosed by contour	17° 58'.3 S	146° 34'.7 E
	depth, 8 ₂ m, with depth, 3m	17° 54'.2 S	146° 33'.2 E
	depth, 16 ₇ m, with depth, 8 ₇ m, enclosed by contour	17° 50'.3 S	146° 31'.4 E
	depth, 19 ₅ m, with depth, 10 ₇ m	17° 46'.0 S	146° 30'.5 E
	depth, 13 ₅ m, with depth, 9 ₉ m	17° 46'.1 S	146° 29'.1 E
	depth, 28m, with depth, 15 ₉ m	17° 34'.8 S	146° 26'.5 E
Delete	depth, 39m	18° 08'.5 S	146° 58'.8 E
	depth, 49m	18° 04'.9 S	146° 52'.7 E
	depth, 20 ₇ m	18° 05'.1 S	146° 52'.0 E
	depth, 50m	17° 59'.3 S	146° 50'.5 E
	depth, 18 ₆ m, and enclosing contour	17° 52'.8 S	146° 33'.2 E
	depth, 10 ₁ m	17° 45'.0 S	146° 29'.4 E
241 AUSTRALIA - QUEENSLAND - Hamilton Island to Dent Island - Anchor berths			
Maritime Safety Queensland Notice 74/2018			
Aus 252 [247/2017]			
Insert	anchor berth, desig <i>SH</i>	20° 22'.90 S	148° 57'.70 E
	anchor berth, desig <i>NWD</i>	20° 20'.60 S	148° 54'.90 E
Aus 253 [774/2017]			
Insert	anchor berth, desig <i>SH</i>	20° 22'.900 S	148° 57'.700 E
	anchor berth, desig <i>NWD</i>	20° 20'.600 S	148° 54'.900 E
242 AUSTRALIA - QUEENSLAND - Lihou Reef - Tower, wreck			
Peter Sayre			
Aus 614 [384/2016]			
Delete	tower, with legend TR (14)	17° 07'.0 S	152° 00'.2 E
	stranded wreck	17° 09'.9 S	152° 08'.9 E
Aus 614 (plan, Turtle Islet) [384/2016]			
Delete	tower, with legend RADIO TOWER (14)	17° 07'.00 S	152° 00'.23 E
Aus 4621 (INT 621) [NE 22/9/2017]			
Delete	tower, with legend TR (14)	17° 07'.0 S	152° 00'.2 E
	legend Turtle Islet	17° 03'.5 S	152° 03'.9 E
243 AUSTRALIA - QUEENSLAND - Osborne Reef - Beacon withdrawn			
Australian Maritime Safety Authority			
Aus 281 [957/2017]			
Replace	beacon with, monument	13° 03'.3 S	143° 37'.1 E
Aus 834 [957/2017]			
Replace	beacon with, monument	13° 03'.3 S	143° 37'.1 E

244 AUSTRALIA - WESTERN AUSTRALIA - Albany - Lights amended

Department of Transport WA Notice 39/2018

Aus 109 [205/2017]

Amend	light to <i>Fl.R.3s</i>	35° 01'.99 S	117° 53'.30 E
	light to <i>Fl.G.3s</i>	35° 01'.95 S	117° 53'.30 E

245 AUSTRALIA - WESTERN AUSTRALIA - Wyndham - Middle Ground - Lit raft moved, lights established

Department of Transport WA Notice 50/2018

Aus 32 (plan, Approaches to Wyndham Wharf) [61/2018]

Replace	beacon with, special light beacon, <i>Oc.3s.8m 5M</i> , with triangular topmark apex down	15° 19'.07 S	128° 03'.44 E
	beacon with, special light beacon, <i>Iso.4s.6m 3M</i> , with triangular topmark apex up	15° 18'.78 S	128° 03'.76 E
Move	lit raft	15° 18'.45 S	128° 05'.73 E
	to	15° 19'.842 S	128° 06'.524 E

246 AUSTRALIA - VICTORIA - Port Phillip - Sandringham - Groyne

Parks Victoria

Aus 155 (plan, Sandringham) [207/2018]

Insert	continuous line	37° 56'.513 S	144° 59'.965 E
		37° 56'.490 S	144° 59'.879 E
Delete	depth, <u>0</u> ₂ m	37° 56'.50 S	144° 59'.93 E

247 AUSTRALIA - VICTORIA - Western Port - Hastings Bight - Beacon

Parks Victoria Notice 99/2018

Aus 152 (plan, Hastings Bight) [1086/2017]

Delete	beacon	38° 18'.88 S	145° 12'.62 E
--------	--------	--------------	---------------

248 AUSTRALIA - TASMANIA - River Derwent - Dowsings Point - Depths

HydroSurvey Australia

Aus 172 [16/2018]

Insert	depth, <u>1</u> ₃ m, enclosed by contour	42° 49'.554 S	147° 18'.482 E
	depth, <u>1</u> ₇ m, enclosed by contour	42° 49'.571 S	147° 18'.539 E
Delete	depth, <u>2</u> ₉ m	42° 49'.56 S	147° 18'.46 E
Insert	depth, <u>1</u> ₃ m, enclosed by contour	42° 49'.554 S	147° 18'.482 E
	depth, <u>1</u> ₇ m, enclosed by contour	42° 49'.571 S	147° 18'.539 E
Delete	depth, <u>2</u> ₉ m	42° 49'.56 S	147° 18'.46 E

249 SOLOMON ISLANDS - New Georgia Group - Chart notes

Australian Hydrographic Office

SLB 301 [899/2017]

Insert	legend, <i>Volcanic Activity (see Note)</i>	8° 22'.0 S	156° 31'.1 E
	accompanying chart note	8° 27'.75 S	155° 43'.26 E

SLB 302 [NC 11/8/2017]

Insert	accompanying chart note	6° 43'.79 S	157° 57'.43 E
Delete	Volcanic Activity chart note	07° 05'.0 S	158° 18'.0 E

250(T)/2018 AUSTRALIA - QUEENSLAND - Burnett River - Distillery Reach - Wreck
Maritime Safety Queensland Notice 69(T)/2018

A wreck marked by a special light buoy, *Fl. Y. 2-5s*, exists in position 24° 51'.10 S 152° 21'.84 E.

Mariners are advised to navigate with caution in the area.

Chart temporarily affected - Aus 242

251(T)/2018 AUSTRALIA - QUEENSLAND - Cairns - Trinity Inlet - Wreck
Maritime Safety Queensland Notice 73/2018

A wreck marked with a special light, *Fl. Y. 2-5s*, exists in position 16° 57'.45 S 145° 47'.79 E.

Chart temporarily affected - Aus 264

252(T)/2018 AUSTRALIA - QUEENSLAND - Gold Coast - Scientific instruments
Maritime Safety Queensland Notice 83/2018

Special light buoys exist as follows:

<i>Position</i>	<i>Remarks</i>
27° 57'.71 S 153° 26'.50 E	<i>Fl. Y. 2-5s</i>
27° 57'.79 S 153° 26'.50 E	<i>Fl. Y. 2-5s</i>
27° 57'.96 S 153° 26'.49 E	<i>Fl(5)Y 20s</i>
27° 58'.01 S 153° 26'.48 E	<i>Fl(5)Y 20s</i>

Chart temporarily affected - Aus 230

253(T)/2018 AUSTRALIA - QUEENSLAND - Moreton Bay - St Helena Island - Wreck
Maritime Safety Queensland Notice 67(T)/2018

A wreck marked by a special light buoy, *Fl. Y. 2s*, exists in position 27° 22'.76 S 153° 16'.79 E.

Chart temporarily affected - Aus 236

254(T)/2018 AUSTRALIA - QUEENSLAND - Shoal Point - Light buoy off station
Maritime Safety Queensland Notice 71(T)/2018

The south cardinal light buoy, *Q(6)+LFl. 15s* (21° 00'.70 S 149° 11'.13 E), is off station.

Chart temporarily affected - Aus 249 - Aus 251 - Aus 823 - Aus 824

255(T)/2018 AUSTRALIA - QUEENSLAND - Weipa - Albatross Bay - Scientific instruments
Former Notice - 76(T)/2018 is cancelled
Maritime Safety Queensland Notice 82(T)/2018

Subsurface scientific instruments marked by special light buoys, *Fl. Y.*, exist in the following positions:

12° 54'.38 S 141° 38'.84 E
12° 40'.79 S 141° 44'.97 E
12° 40'.43 S 141° 46'.60 E
12° 40'.28 S 141° 50'.70 E
12° 41'.54 S 141° 52'.21 E
12° 56'.85 S 141° 35'.98 E.

Chart temporarily affected - Aus 4 - Aus 301 - Aus 701

256(T)/2018 AUSTRALIA - NORTHERN TERRITORY - Darwin - Emery Point - Light unlit
Department of Infrastructure, Planning and Logistics NT Notice 11/2018

The light, *Fl(3)WR. 15s 18m 19/14M* (12° 27'.23 S 130° 48'.93 E) is unlit.

Chart temporarily affected - Aus 24 - Aus 25 - Aus 26 - Aus 309 - Aus 722

257(T)/2018 AUSTRALIA - NORTHERN TERRITORY - Darwin - Preston Point - Light unlit

Department of Infrastructure, Planning and Logistics NT Notice 13/2018

The leading lights, *F.Bu & Fl.Y.2s* (12° 30'.67 S 130° 53'.83 E) and *F.Bu & Fl.Y.2s* (12° 30'.61 S 130° 53'.76 E) are unlit.

Chart temporarily affected - Aus 26 - Aus 28

258(T)/2018 AUSTRALIA - WESTERN AUSTRALIA - Christmas Island to Perth - Cable operations

Australian Maritime Safety Authority Navarea X Warning 15/2018, Australian Communications and Media Authority

Vessel *Ile De Batz* is conducting submarine cable laying operations between the following positions:

10° 10'.0 S 105° 50'.0 E
 13° 45'.0 S 106° 15'.0 E
 20° 28'.0 S 108° 57'.0 E
 20° 53'.0 S 109° 40'.0 E
 22° 45'.0 S 110° 20'.0 E
 25° 00'.0 S 110° 20'.0 E
 27° 30'.0 S 111° 00'.0 E
 31° 30'.0 S 114° 25'.0 E
 31° 56'.0 S 115° 45'.0 E.

Mariners are advised to navigate with caution in the area. 2.5M clearance requested.

Chart temporarily affected - Aus 112 - Aus 400 - Aus 608 - Aus 754 - Aus 4708 (INT 708) - Aus 4709 (INT 709) - Aus 4723 (INT 723) - Aus 4725 (INT 725)

259(T)/2018 AUSTRALIA - WESTERN AUSTRALIA - Exmouth Plateau - Survey operations completed

Former Notice - 167(T)/2018 is cancelled

Chevron Australia Pty Ltd

Cancel this notice on receipt.

Chart formerly affected - Aus 328

260(T)/2018 AUSTRALIA - WESTERN AUSTRALIA - Perth - Cable operations northwestwards completed

Former Notice - 169(T)/2018 is cancelled

Department of Transport WA

Cancel this notice on receipt.

Chart formerly affected - Aus 112 - Aus 754

261(T)/2018 AUSTRALIA - VICTORIA - Lakes Entrance - Shoaling

Gippsland Ports Notice 110(T)/2018

Shoaling exists from the light, *Fl.G.3s* (37° 53'.22 S 147° 58'.24 E), extending 120m into the channel in a northwesterly direction. A least depth of *1.7m* exists in position 37° 53'.21 S 147° 58'.20 E.

Mariners are advised to navigate with caution in the area.

Chart temporarily affected - Aus 182

262(T)/2018 AUSTRALIA - VICTORIA - Port Phillip - Beaumaris Bay - Light beacon unlit

Parks Victoria Notice 116(T)/2018

The east cardinal light beacon, *Q(3)10s* (37° 59'.59 S 145° 02'.61 E) is unlit.

Chart temporarily affected - Aus 155

263(T)/2018 AUSTRALIA - TASMANIA - Devonport - Shoaling
HydroSurvey Australia

Shoaling exists in the Mersey River between positions 41° 11'.20 S 146° 21'.98 E and 41° 11'.48 S 146° 22'.10 E.

Mariners are advised to navigate with caution in the area.

Chart temporarily affected - Aus 164

264(T)/2018 AUSTRALIA - TASMANIA - Lookout Head - Scientific instrument
Marine and Safety Tasmania Notice M52/2018

A special buoy exists in position 40° 34'.39 S 148° 07'.40 E.

Chart temporarily affected - Aus 798 - Aus 800

265(T)/2018 AUSTRALIA - TASMANIA - Port Dalrymple - Windmill Point - Light unlit
Maritime and Safety Tasmania Notice 51/2018

The starboard lateral light beacon, *Fl.G.3s* (41° 06'.58 S 146° 48'.50 E) is unlit.

Chart temporarily affected - Aus 167

266(T)/2018 AUSTRALIA - TASMANIA - Robbins Island - Light buoy off station
Australian Bureau of Meteorology

The port lateral light buoy, *Fl.R.5s* (40° 39'.30 S 144° 50'.50 E), is off station.

Chart temporarily affected - Aus 790

II

HYDROGRAPHIC REPORTS

NIL

III

NAVIGATION WARNINGS

The Australian Hydrographic Office will no longer compile Section III of the Australian Notices to Mariners. For the most up to date navigation warnings please refer to:

AMSA Navigation Warnings

<http://amsa.gov.au/search-and-rescue/distress-and-safety-comms/msi/msi-email/index.asp>

New Zealand Notices to Mariners (Navarea XIV warnings)

<http://www.linz.govt.nz/sea/maritime-safety/notices-mariners>

To accompany Australian Notice to Mariners 236/2018

DREDGED AREAS

Depths in dredged areas, although generally maintained, may be less than charted. For the latest information, consult the Harbour Master.

Note for chart Aus 237

To accompany Australian Notice to Mariners 236/2018

DREDGED AREAS

Depths in dredged areas, although generally maintained, may be less than charted. For the latest information, consult the Harbour Master.

Note for chart Aus 242

To accompany Australian Notice to Mariners 236/2018

DREDGED AREAS

Depths in dredged areas, although generally maintained, may be less than charted. For the latest information, consult the Harbour Master.

Note for chart Aus 244

To accompany Australian Notice to Mariners 236/2018

DREDGED AREAS

Depths in dredged areas, although generally maintained, may be less than charted. For the latest information, consult the Harbour Master.

Note for chart Aus 246

To accompany Australian Notice to Mariners 236/2018

DREDGED AREAS

Depths in dredged areas, although generally maintained, may be less than charted. For the latest information, consult the Harbour Master.

Note for chart Aus 250

To accompany Australian Notice to Mariners 236/2018

DREDGED AREAS

Depths in dredged areas, although generally maintained, may be less than charted. For the latest information, consult the Harbour Master.

Note for chart Aus 271

To accompany Australian Notice to Mariners 236/2018

DREDGED AREAS

Depths in dredged areas, although generally maintained, may be less than charted. For the latest information, consult the Harbour Master.

Note for chart Aus 238

To accompany Australian Notice to Mariners 236/2018

DREDGED AREAS

Depths in dredged areas, although generally maintained, may be less than charted. For the latest information, consult the Harbour Master.

Note for chart Aus 243

To accompany Australian Notice to Mariners 236/2018

DREDGED AREAS

Depths in dredged areas, although generally maintained, may be less than charted. For the latest information, consult the Harbour Master.

Note for chart Aus 245

To accompany Australian Notice to Mariners 236/2018

DREDGED AREAS

Depths in dredged areas, although generally maintained, may be less than charted. For the latest information, consult the Harbour Master.

Note for chart Aus 249

To accompany Australian Notice to Mariners 236/2018

DREDGED AREAS

Depths in dredged areas, although generally maintained, may be less than charted. For the latest information, consult the Harbour Master.

Note for chart Aus 265

To accompany Australian Notice to Mariners 236/2018

DREDGED AREAS

Depths in dredged areas, although generally maintained, may be less than charted. For the latest information, consult the Harbour Master.

Note for chart Aus 272

To accompany Australian Notice to Mariners 249/2018

VOLCANIC ACTIVITY

Active submarine volcanos exist in this area. Some volcanos have been reported to erupt breaking the surface of the sea and projecting ashes and other volcanic materials into the air. Changes to charted depths, uplifting of reefs and emerging of volcanic islets may occur throughout the area. Due to the unpredictable nature of these events mariners are strongly recommended to avoid the area.

Note for chart SLB 301

To accompany Australian Notice to Mariners 249/2018

VOLCANIC ACTIVITY

Active submarine volcanos exist in this area. Some volcanos have been reported to erupt breaking the surface of the sea and projecting ashes and other volcanic materials into the air. Changes to charted depths, uplifting of reefs and emerging of volcanic islets may occur throughout the area. Due to the unpredictable nature of these events mariners are strongly recommended to avoid the area.

Note for chart SLB 302

Bunbury, WA (33° 19'S, 115° 38'E)	
UN/LOCODE: AU BUY	
Paper charts:	Aus 115, 755
AusENC cells:	AU5115P1, AU434115
Security Regulated Port:	Yes
Port Authority:	Southern Ports Authority
Website:	www.southernports.com.au
Email:	enquiries.bunbury@southernports.com.au
Telephone:	+61 8 9729 6527
Pilot	
Email:	pilot@southernports.com.au
Pilotage:	Compulsory > 150 GRT
Pilot Boarding Ground:	33° 15.85'S, 115° 37.40'E
Communication:	"Port of Bunbury"
Call up, emergencies:	VHF Ch 16
On arrival/ Pilots/ tugs:	VHF Ch 12
Notice of ETA:	48 hours
For more information:	www.southernports.com.au

Terminal of Cape Cuvier (Port of Carnarvon), WA (24° 13'S, 113° 24'E)	
UN/LOCODE: AU CCU	
Paper charts:	Aus 73, 331
AusENC cells:	AU5073P1, AU425113
Security Regulated Port:	Yes
Port Authority:	Department of Transport WA
Website:	www.transport.wa.gov.au/marine
Email:	port.ops@transport.wa.gov.au
Harbour Master's office:	+61 8 9435 7692
Fax:	+61 8 9435 7807
Deputy Harbour Master:	+61 8 9435 7533
Port operator:	Rio Tinto - Dampier Salt Pty Ltd
Website:	www.dampiersalt.com.au
Telephone:	+61 8 9942 6003
Pilot	
Telephone:	+61 8 9956 3277
Pilotage:	Compulsory 35m LOA
Pilot Boarding Ground:	24° 12.47'S, 113° 23.45'E
Communication	"Cape Cuvier"
Call up, emergencies:	VHF Ch 16
Pilots:	VHF Ch 06, 08, 12, 67
Notice of ETA:	10 days
For more information:	www.dampiersalt.com.au

Cape Preston, WA (20° 50'S, 116° 12'E)	
UN/LOCODE: AU CPN	
Paper charts:	Aus 68, 327
AusENC cells:	AU5068P1, AU421116
Security Regulated Port:	Yes
Port Authority:	Department of Transport WA
Website:	www.transport.wa.gov.au/marine
Email:	port.ops@transport.wa.gov.au
Harbour Master's office:	+61 8 9435 7692
Fax:	+61 8 9435 7807
Deputy Harbour Master:	+61 8 9435 7533
Port Facility Operator:	Cape Preston Port Company
Email:	port.ops@capepreston.com
Telephone:	+61 8 9178 3850
Pilotage:	Compulsory 35m LOA
Pilot Boarding Ground:	Anchorage CP 6 20° 41.84'S, 116° 09.21'E
Communication	
Call up, emergencies:	VHF Ch 16
Operations:	VHF Ch 15

Dampier, WA (20° 37'S, 116° 43'E)	
UN/LOCODE: AU DAM	
Paper charts:	Aus 57, 58, 59, 60
AusENC cells:	AU5058P0, AU421116
Security Regulated Port:	Yes
Port Authority	Pilbara Ports Authority
Website:	www.pilbaraports.com.au
Email:	info@pilbaraports.com.au
Telephone:	+61 8 9159 6555
Pilots:	Dampier VTS
Telephone:	+61 8 9159 6556
Email:	dampier.vts@pilbaraports.com.au
Pilotage:	Compulsory > 150 GRT
Pilot Boarding Ground:	Will depend on type of vessel, pilot boarding method and pilotage company
Pilot Station A:	20° 21.0'S, 116° 44.0'E
Pilot Station B:	20° 23.7'S, 116° 42.0'E
Pilot Station C:	20° 23.7'S, 116° 43.7'E
Pilot Station D:	20° 28.6'S, 116° 44.3'E
Pilot Station E:	20° 38.5'S, 116° 39.0'E
Communication:	Dampier VTS
Call up, emergencies:	VHF Ch 16
Port:	VHF Ch 11
Pilots:	VHF Ch 13, 68
Tugs:	VHF Ch 13, 68
Ship to ship:	VHF Ch 77
Notice of ETA:	7 days, 72 hours and 4 hours from Port Limits
For more information:	www.pilbaraports.com.au/Port-of-Dampier/Port-Operations

Koolan Island, (Yampi Sound) WA (16° 07'S, 123° 44'E) UN/LOCODE: AU KOI	
Paper charts:	Aus 40, 41
AusENC cells:	AU5041P2, AU417123
Security Regulated Port:	Yes
Port Authority:	Department of Transport WA
Website:	www.transport.wa.gov.au/marine
Email:	port.ops@transport.wa.gov.au
Harbour Master's office:	+61 8 9435 7692
Fax:	+61 8 9435 7807
Deputy Harbour Master:	+61 8 9435 7533
Port operator:	Mount Gibson Iron Ltd
Website:	www.mtgibsoniron.com.au
Email:	ki.portcontrol@mtgibsoniron.com.au
Telephone:	+61 8 9423 0857
Mobile:	+61 434 738 012
Pilot:	West Coast Pilots P/L
Website:	www.westcoastpilots.com.au
email:	manager@westcoastpilots.com.au
Telephone:	+61 8 9335 1138
Mobile:	+61 419 195 592
Pilotage:	Compulsory 35m LOA
Pilot Boarding Ground:	16° 07.50'S, 123° 40.00'E
Anchorage KI 1:	16° 08.00'S, 123° 40.30'E
Anchorage KI 2:	16° 08.25'S, 123° 39.40'E
Communication	
Call up, emergencies:	VHF Ch 16
Terminal:	VHF Ch 06, 12

Onslow, WA (21° 38'S, 115° 06'E) UN/LOCODE: AU ONS	
Paper chart:	Aus 64
AusENC cells:	AU5064P1, AU422115, AU422114
Security Regulated Port:	Yes
Port Authority:	Department of Transport WA
Website:	www.transport.wa.gov.au/marine
Email:	port.ops@transport.wa.gov.au
Harbour Master's office:	+61 8 9435 7692
Fax:	+61 8 9435 7807
Deputy Harbour Master:	+61 8 9435 7533
Operator:	Onslow Salt
Telephone:	+61 8 9184 9000
Email:	onslowsalt@akzonobelsalt.com
Pilotage:	Compulsory 35m LOA
Pilot Boarding Ground:	21° 28.50'S, 115° 04.99'E
Communication	
Call up, emergencies:	VHF Ch 16
For more information:	www.transport.wa.gov.au/imagine/ports-handbook.asp

Port Hedland, WA (20° 19'S, 118° 34'E) UN/LOCODE: AU PHE	
Paper charts:	Aus 52, 53, 54
AusENC cells:	AU5052P0, AU42118
Security Regulated Port:	Yes
Port Authority:	Pilbara Ports Authority
Website:	www.pilbaraports.com.au
Email:	info@pilbaraports.com.au
Telephone:	+61 8 9173 9000
Fax:	+61 8 9173 9060
Pilot:	Port Hedland Pilots
Telephone:	+61 8 9173 9040
Pilotage:	Compulsory > 35m LOA or ≥ 150 GRT
Pilot Boarding Ground:	20° 09.92'S, 118° 33.08'E
Communication:	"Port Hedland VTS"
Call up, emergencies:	VHF Ch 16
Port:	VHF Ch 16, 12, 08
Pilots:	VHF Ch 06, 09, 10, 13, 15, 20, 67, 68, 72, VHF Ch 74, 79
Notice of ETA:	8 days
For more information:	www.pilbaraports.com.au/Port-of-Port-Hedland/Port-operations/Permits-and-procedures-PortHandbook and / or; www.worldvtsguide.org/

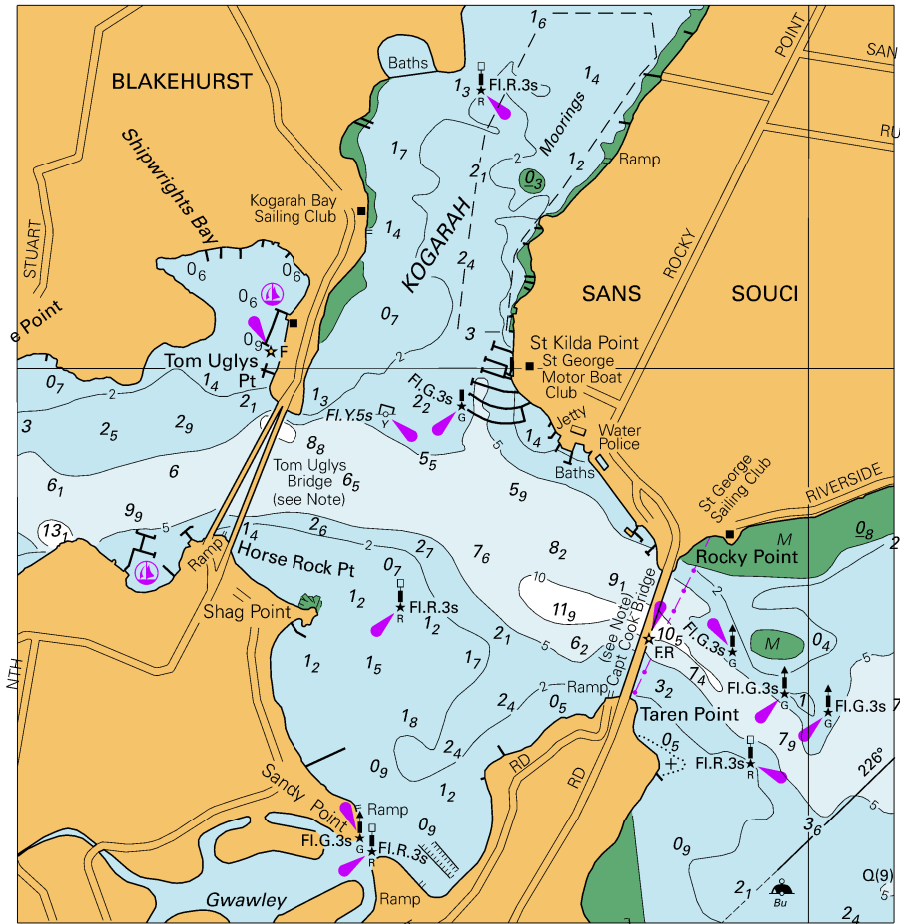
Port Walcott, WA (20° 35'S, 117° 11'E) UN/LOCODE: AU PWL	
Paper charts:	Aus 55, 56
AusENC cells:	AU5056P0, AU421117
Security Regulated Port:	Yes
Port Authority:	Department of Transport WA
Website:	www.transport.wa.gov.au/marine
Email:	port.ops@transport.wa.gov.au
Harbour Master's office:	+61 8 9435 7692
Fax:	+61 8 9435 7807
Deputy Harbour Master:	+61 8 9435 7533
Operator:	Rio Tinto
Telephone:	+61 8 9186 1487
Fax:	+61 8 9143 5804
Email:	marine.operations@riotinto.com
Pilot:	Port Walcott Pilots
Telephone:	+61 8 9187 1329
Email:	pw@mswapilots.com.au
Pilotage:	Compulsory > 500 GRT
Pilot Boarding Ground:	Anchorage position No. 3 20° 32.4'S 117° 15.00' E
Communication	
Call up, emergencies:	VHF Ch 16
Port:	VHF Ch 14
Helicopter:	VHF Ch 09
Tugs:	VHF Ch 09, 10
Notice of ETA:	7 days

Varanus Island, WA (20° 39'S, 115° 34'E) UN/LOCODE: AU VAR	
Paper chart:	Aus 742
AusENC cells:	AU421115, AU230110
Security Regulated Port:	Yes
Port Authority:	Department of Transport WA
Website:	www.transport.wa.gov.au/marine
Email:	port.ops@transport.wa.gov.au
Harbour Master's office:	+61 8 9435 7692
Fax:	+61 8 9435 7807
Deputy Harbour Master:	+61 8 9435 7533
Operator:	Quadrant Energy Ltd
Website:	www.quadrantenergy.com.au
Email:	varanusfieldsup@quadrantenergy.com.au
Telephone:	+61 8 6218 7601
Fax:	+61 8 6218 7617
Pilotage:	Compulsory 35m LOA
Pilot Boarding Ground:	20° 40.00'S, 115° 40.00'E
Communication	
Call up, emergencies:	VHF Ch 16
Operator / Pilots:	VHF Ch 74
Notice of ETA:	96 hours

Wyndham, WA (15° 28'S, 128° 06'E) UN/LOCODE: AU WYN	
Paper chart:	Aus 32
AusENC cells:	AU5032P1, AU416128
Security Regulated Port:	Yes
Port Authority:	Department of Transport WA
Website:	www.transport.wa.gov.au/marine
Port Operator:	Cambridge Gulf Limited
Website:	www.cgltd.com.au
Harbour Master email:	hmordport@westnet.com.au
Port Manager email:	ordport@wn.com.au
Telephone:	+61 8 9161 1203
Harbour Master Mobile:	+61 428 941 775
Fax:	+61 8 9161 1244
Pilotage:	Compulsory 35m LOA
Pilot Boarding Grounds:	14° 58.15'S, 128° 10.37'E 14° 48.90'S, 128° 18.70'E 15° 07.00'S, 128° 06.00'E (small vessels)
Communication	
Call up, emergencies:	VHF Ch 16
Port / Pilots:	VHF Ch 12
Notice of ETA:	7 days
For more information:	www.cgltd.com.au/cgl-wyndham-port/forms-links

Cockatoo Is (Yampi Sound) , WA (16° 06'S, 123° 37'E) UN/LOCODE: AU CTI	
Paper chart:	Aus 41
AusENC cells:	AU5041P1, AU417123
Security Regulated Port:	Yes
Port Authority:	Department of Transport WA
Website:	www.transport.wa.gov.au/marine
Email:	port.ops@transport.wa.gov.au
Harbour Master's office:	+61 8 9435 7692
Fax:	+61 8 9435 7807
Deputy Harbour Master:	+61 8 9435 7533
Operator:	Pluton Resources Limited
Website:	www.plutonresources.com
Email:	anson.griffith@pluton.com.au
Telephone:	+61 8 6145 1800
Fax:	+61 8 6145 1899
Pilot	
Mobile:	+61 434 803 525
Email:	jfiggess@iinet.net.au
Pilotage:	Compulsory 35m LOA
Pilot Boarding Ground:	16° 07.00'S, 123° 35.30'E
Communication:	"Cockatoo Island"
Call up, emergencies:	VHF Ch 16
Working:	VHF Ch 13
Notice of ETA:	7, 5, 3, 2, 1 days (broome@ISS-shipping.com)

To accompany Australian Notice to Mariners 232/2018

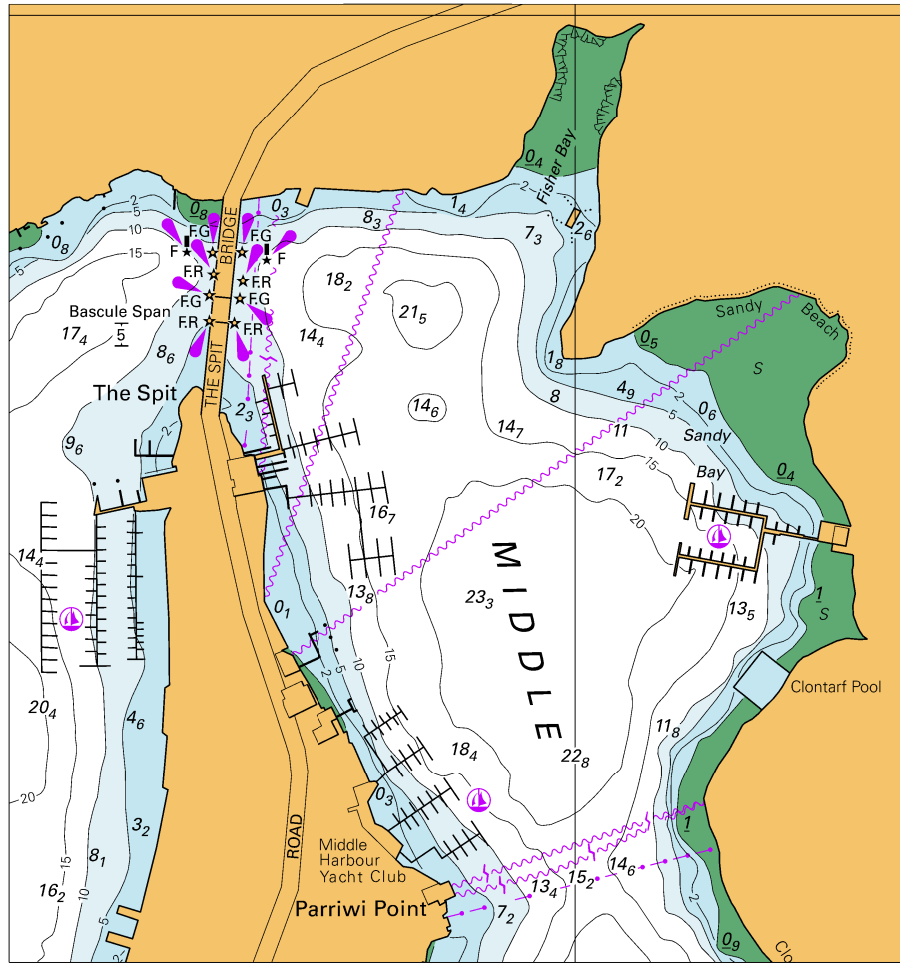


Block for Chart Aus 198

© Commonwealth of Australia 2018

(115.9 x 121.4mm)

To accompany Australian Notice to Mariners 234/2018



Block for Chart Aus 201

© Commonwealth of Australia 2018

(118.8 x 126.8mm)