



23 February 2018

Edition 4

AUSTRALIAN NOTICES TO MARINERS

Notices 137 - 184

Published fortnightly by the Australian Hydrographic Office



Australian Notices to Mariners are the authority for correcting charts and publications published by the Australian Hydrographic Office covering Australia, Papua New Guinea, Solomon Islands, Australian Antarctic Territory and Timor-Leste.

Commodore F.T. FREEMAN RAN
Hydrographer of Australia

SECTIONS.

- I. **Australian Notices to Mariners, including blocks and notes.**
- II. **Hydrographic Reports.**
- III. **Navigational Warnings.**

SUPPLEMENTS.

- I. **Tracings**
- II. **Cumulative List of Australian Notices to Mariners.**
- III. **Cumulative List of Temporary and Preliminary Australian Notices to Mariners.**
- IV. **Temporary and Preliminary Notices in force.**
- V. **Amendments to Admiralty List of Lights and Fog Signals (Vol K), Radio Signals (NP 281(2), 282, 283(2), 285, 286(4)) and Sailing Directions (NP 9, 13, 14, 15, 33, 34, 35, 36, 39, 44, 51, 60, 61, 62, 100, 136).**

© Commonwealth of Australia 2018

This work is copyright. Apart from any use permitted under the Copyright Act 1968, no part may be reproduced by any process, adapted, communicated or commercially exploited without prior written permission from The Commonwealth represented by the Australian Hydrographic Office.

IMPORTANT NOTICE

This edition of Notices to Mariners includes all significant information affecting AHO products which the AHO has become aware of since the last edition. All reasonable efforts have been made to ensure the accuracy and completeness of the information, including third party information, on which these updates are based. The AHO regards third parties from which it receives information as reliable, however the AHO cannot verify all such information and errors may therefore exist. The AHO does not accept liability for errors in third party information.

GENERAL INSTRUCTIONS

The substance of these notices should be inserted on the charts affected.

Bearings are referred to the true compass and are reckoned clockwise from North; those relating to lights are given as seen by an observer from seaward.

Positions quoted in notices relate to WGS84 which is the horizontal datum for all charts produced by the Australian Hydrographic Office.

The range quoted for a light is its nominal range.

Depths are with reference to the chart datum of each chart. Heights are above mean high water springs or mean higher high water, as appropriate.

The capital letter (P) or (T) after the number of any notice denotes a preliminary or temporary notice respectively, which are contained separately at the end of the permanent notices.

REPORTING OF DANGERS

Mariners are particularly requested to notify the AUSTRALIAN HYDROGRAPHIC OFFICE, Locked Bag 8801 Wollongong, NSW 2500 (Fax 02-4223 6599, e-mail datacentre@hydro.gov.au or, alternatively by filling in and submitting the [Hydrographic Notes](#) forms located on the web site – www.hydro.gov.au), immediately on the discovery of new dangers or suspected dangers to navigation. For changes or defects in aids to navigation notify AusSAR (Fax 02-6230 6868 or email rccaus@amsa.gov.au).

AUTHORISED USE

Copies of Australian notices are available free of charge from the Australian Hydrographic Office (AHO) website (www.hydro.gov.au) and through the eNotices (email) service (www.hydro.gov.au/enotices/enotices.htm).

Individual Notices may be copied for the purpose of inserting Notice substance on official charts and publications. Paper copies may be printed by chart agents and distributed to customers on a cost recovery basis. Participating chart agents are listed on the AHO website as providing a 'Paper Notices to Mariners' service (www.hydro.gov.au/webapps/jsp/agents/agents-list.jsp). Copies of the notices may not be sold for profit without prior written agreement.

NUMERICAL INDEX OF NOTICES TO MARINERS

Edition No 4

Notices	Aus Chart, INT Chart, ENC Cell, AHP, BA Pubs
137	Aus 267
138	Amendment to Australian National Tide Tables 2018
139	HF Wiluna VMW broadcast schedule changes
140	Aus 202
141	Aus 195
142	Aus 238
143	Aus 242
144	Aus 256
145	Aus 814, 815
146	Aus 257
147	Aus 646
148	Aus 25, 27, 28
149	Aus 335, 756
150	Aus 81
151	Aus 81, 332, 751
152	Aus 116
153	Aus 129, 780
154	Aus 120, 122, 130, 133, 134, 135, 136, 137, 138, 139, 140
155	Aus 139, 485, 781
156	Aus 130, 137
157	Aus 796, 797
158	SLB 201, 303, 304
159(T)	Aus 244, 245, 246, 271
160(T)	Aus 236, 237
161(T)	Aus 819
162(T)	Aus 250
163(T)	Aus 235
164(T)	Aus 294
165(T)	Aus 25
166(T)	Aus 115
167(T)	Aus 328
168(T)	Aus 328, 329, 744, 745
169(T)	Aus 112, 754
170(T)	Aus 327, 4723, INT 723
171(P)	Aus 32
172(T)	Aus 348, 4709, 4728, INT 709, 728
173(T)	Aus 127
174(T)	Aus 129
175(T)	Aus 349, 787
176(T)	Aus 143, 155
177(T)	Aus 143, 158
178(T)	Aus 153
179(T)	Aus 153, 157
180(T)	Aus 140
181(T)	Aus 169
182(T)	Aus 172
183(T)	Aus 175
184(T)	Aus 4604, 4623, 4634, INT 604, 623, 634, SLB 302

NUMERICAL INDEX OF CHARTS AFFECTED

Edition No 4

Aus Chart	Notices
Aus 25	148, 165(T)
Aus 27	148
Aus 28	148
Aus 32	171(P)
Aus 81	150, 151
Aus 112	169(T)
Aus 115	166(T)
Aus 116	152
Aus 120	154
Aus 122	154
Aus 127	173(T)
Aus 129	153, 174(T)
Aus 130	154, 156
Aus 133	154
Aus 134	154
Aus 135	154
Aus 136	154
Aus 137	154, 156
Aus 138	154
Aus 139	154, 155
Aus 140	154, 180(T)
Aus 143	176(T), 177(T)
Aus 153	178(T), 179(T)
Aus 155	176(T)
Aus 157	179(T)
Aus 158	177(T)
Aus 169	181(T)
Aus 172	182(T)
Aus 175	183(T)
Aus 195	141
Aus 202	140
Aus 235	163(T)
Aus 236	160(T)
Aus 237	160(T)
Aus 238	142
Aus 242	143
Aus 244	159(T)
Aus 245	159(T)
Aus 246	159(T)
Aus 250	162(T)
Aus 256	144
Aus 257	146
Aus 267	137
Aus 271	159(T)
Aus 294	164(T)
Aus 327	170(T)
Aus 328	167(T), 168(T)
Aus 329	168(T)
Aus 332	151
Aus 335	149
Aus 348	172(T)
Aus 349	175(T)
Aus 485	155
Aus 646	147

Aus Chart	Notices
Aus 744	168(T)
Aus 745	168(T)
Aus 751	151
Aus 754	169(T)
Aus 756	149
Aus 780	153
Aus 781	155
Aus 787	175(T)
Aus 796	157
Aus 797	157
Aus 814	145
Aus 815	145
Aus 819	161(T)
Aus 4604	184(T)
Aus 4623	184(T)
Aus 4634	184(T)
Aus 4709	172(T)
Aus 4723	170(T)
Aus 4728	172(T)
SLB 201	158
SLB 302	184(T)
SLB 303	158
SLB 304	158

INT Chart	Notices
INT 604	184(T)
INT 623	184(T)
INT 634	184(T)
INT 709	172(T)
INT 723	170(T)
INT 728	172(T)

137 AUSTRALIA - Products- New Charts and New Editions to be published shortly reuse
Australian Hydrographic Service

New Charts to be published shortly

<i>Chart</i>	<i>Title</i>	<i>Scale</i>	<i>Expected Publication Date</i>	<i>Remarks</i>
NIL				

New Editions to be published shortly

<i>Chart</i>	<i>Title</i>	<i>Scale</i>	<i>Expected Publication Date</i>	<i>Remarks</i>
Aus 267	Port of Lucinda	1:12 500	9th March 2018	New Edition to incorporate latest bathymetric data.

138 AUSTRALIA - Product - Amendment to Australian National Tide Tables 2018
Australian Hydrographic Service

Page 341
Amend To Chart Datum correction for Port Eyre (Port No 62020) to 0.0

Page 366
Amend Townsville To Chart Datum AUS 257 NE 22 SEP 2017 0.0

139 AUSTRALIA - HF Wiluna VMW broadcast schedule changes
Australian Bureau of Meteorology

From 1 March 2018, the Bureau of Meteorology's coastal waters forecasts for western areas of Western Australia (North West Cape to Cape Naturaliste) will be broadcast one hour later in the HF Wiluna radio broadcast schedule (at 0030, 0430, 0830, 1230, 1630, and 2030 Western Standard Time). It will be broadcast immediately prior to coastal waters forecasts for southern areas of Western Australia.

This change ensures there is time in the HF broadcast schedule for the ongoing delivery of all scheduled weather warnings, forecasts and observations.

Mariners are advised to update their HF radio operating schedules accordingly.

Coastal waters forecasts for western areas of Western Australia will be removed from the earlier broadcast slot (at 0330, 0730, 1130, 1530, 1930, and 2330 Western Standard Time) from 8 March 2018.

140 AUSTRALIA - NEW SOUTH WALES - Port Jackson - Darling Harbour - Infrastructure
Port Authority of New South Wales

Aus 202 [94/2018]
Insert accompanying block 33° 51'.90 S 151° 12'.04 E

141 AUSTRALIA - NEW SOUTH WALES - Port Kembla - Bellambi Point - Obstruction disproved
Australian Hydrographic Office

Aus 195 [720/2017]
Delete # 34° 22'.08 S 150° 55'.67 E

142 AUSTRALIA - QUEENSLAND - Brisbane River - Quarries Reach - Nav aids

Maritime Safety Queensland Notice 53/2018

Aus 238 [95/2018]

Amend	light to <i>Q.R (F Day)</i>	27° 26'.96 S	153° 05'.41 E
	light to <i>Iso.R.2s (F.Y Day)</i>	27° 26'.99 S	153° 05'.50 E

143 AUSTRALIA - QUEENSLAND - Bundaberg - Depth

Maritime Safety Queensland

Aus 242 (plan, Port Bundaberg) [51/2018]

Insert	depth, 3 ₆ <i>m</i> , enclosed by contour	24° 45'.927 S	152° 22'.765 E
--------	--	---------------	----------------

144 AUSTRALIA - QUEENSLAND - Magnetic Island - Nelly Bay - Depths

Maritime Safety Queensland

Aus 256 (plan, Nelly Bay) [1073/2017]

Insert	accompanying block	19° 09'.68 S	146° 51'.30 E
--------	--------------------	--------------	---------------

145 AUSTRALIA - QUEENSLAND - Moreton Bay - North East Channel to Caloundra - Depths; nav aids

Maritime Safety Queensland Notice 494/2017

Aus 814 [3/2018]

Insert	accompanying block	27° 00'.0 S	153° 17'.0 E
--------	--------------------	-------------	--------------

Aus 815 [689/2017]

Insert	accompanying block	26° 55'.0 S	153° 15'.0 E
--------	--------------------	-------------	--------------

146 AUSTRALIA - QUEENSLAND - Townsville - Bearing

UKHO

Aus 257 [1074/2017]

Amend	bearing to 198·9°	19° 14'.69 S	146° 50'.07 E
-------	-------------------	--------------	---------------

147 PAPUA NEW GUINEA - Madang - Binnen Harbour - Wreck

HS Red

Aus 646 [922/2015]

Insert	depth, 6 ₇ <i>m</i> , enclosed by danger circle with legend <i>Wk</i>	5° 13'.129 S	145° 47'.923 E
--------	--	--------------	----------------

Delete	sounding 13 ₁ <i>m</i>	05° 13'.12 S	145° 47'.89 E
--------	-----------------------------------	--------------	---------------

Aus 646 (plan, Madang Harbour) [922/2015]

Insert	depth, 6 ₇ <i>m</i> , enclosed by danger circle with legend <i>Wk</i>	5° 13'.129 S	145° 47'.923 E
--------	--	--------------	----------------

148 AUSTRALIA - NORTHERN TERRITORY - Darwin - Middle Passage to Middle Arm - Depths

Surrich Hydrographics

Aus 25 [NE 10/3/2017]

Replace	depth, 14 ₃ <i>m</i> , with depth, 13 ₂ <i>m</i>	12° 21'.13 S	130° 43'.57 E
---------	--	--------------	---------------

Aus 27 [NE 10/3/2017]

Replace	depth, 11 ₁ <i>m</i> , with depth, 8 ₆ <i>m</i> , enclosed by contour	12° 33'.60 S	130° 51'.52 E
---------	---	--------------	---------------

Aus 28 [NE 10/3/2017]

Replace	depth, 13 ₂ <i>m</i> , with depth, 12 ₇ <i>m</i>	12° 29'.45 S	130° 52'.76 E
	wreck, 6 <i>m</i> , with wreck, 3 ₉ <i>m</i>	12° 29'.92 S	130° 52'.67 E

149 AUSTRALIA - WESTERN AUSTRALIA - Cape Naturaliste - Light buoy moved

Department of Transport WA

Aus 335 [507/2017]

Move	light buoy	33° 32'.06 S	114° 45'.64 E
	to	33° 31'.45 S	114° 46'.22 E

Aus 756 [507/2017]

Move	light buoy	33° 32'.06 S	114° 45'.64 E
	to	33° 31'.45 S	114° 46'.22 E

150 AUSTRALIA - WESTERN AUSTRALIA - Geraldton - Depths

Precision Hydrographic Services

Aus 81 [140/2017]

Insert	accompanying block C	28° 44'.40 S	114° 35'.20 E
	accompanying block D	28° 46'.20 S	114° 28'.20 E

Aus 81 (plan, Port of Geraldton) [140/2017]

Insert	accompanying block A	28° 46'.08 S	114° 35'.67 E
	accompanying block B	28° 45'.40 S	114° 35'.74 E

151 AUSTRALIA - WESTERN AUSTRALIA - Geraldton - Champion Bay - Wreck

Mid West Ports , Precision Hydrographic Services

Aus 81 [150/2018]

Replace	wreck, 9 ₆ m, with wreck, 11 ₅ m	28° 43'.86 S	114° 33'.34 E
---------	--	--------------	---------------

Aus 332 [782/2017]

Replace	wreck, 9 ₆ m, with wreck, 11 ₅ m	28° 43'.9 S	114° 33'.3 E
---------	--	-------------	--------------

Aus 751 [387/2016]

Replace	wreck, 9 ₆ m, with wreck, 11 ₅ m	28° 43'.9 S	114° 33'.3 E
---------	--	-------------	--------------

152 AUSTRALIA - WESTERN AUSTRALIA - Mandurah Estuary - Depth

Fugro LADS

Aus 116 (plan, Entrance to Mandurah Estuary) [11/2018]

Insert	depth, 1 ₄ m, enclosed by contour	32° 31'.532 S	115° 42'.673 E
--------	--	---------------	----------------

153* AUSTRALIA - SOUTH AUSTRALIA - Kangaroo Island - Emu Bay - Light amended

Department of Planning, Transport and Infrastructure SA Notice 7/2018

Aus 129 [824/2017]

Amend	light to <i>Fl.WR.4s 5M</i>	35° 35'.5 S	137° 30'.4 E
-------	-----------------------------	-------------	--------------

Aus 780 [904/2017]

Amend	light to <i>Fl.WR.4s 5M</i>	35° 35'.5 S	137° 30'.4 E
-------	-----------------------------	-------------	--------------

154 AUSTRALIA - SOUTH AUSTRALIA - Kangaroo Island to Port Eyre - Chart note

Australian Hydrographic Office

Note: position of existing chart notes may vary on certain charts.

Aus 120 [652/2017]			
Insert	accompanying note	32° 10'.20 S	133° 19'.25 E
Aus 122 [652/2017]			
Insert	accompanying note	32° 09'.20 S	133° 32'.10 E
Aus 130 [973/2017]			
Insert	accompanying note	34° 51'.55 S	138° 30'.20 E
Aus 133 (plan, Wallaroo) [128/2015]			
Insert	accompanying note	33° 52'.65 S	137° 37'.60 E
Aus 134 [654/2017]			
Insert	accompanying note	34° 45'.00 S	135° 52'.20 E
Aus 135 (plan, Whyalla) [510/2017]			
Insert	accompanying note	33° 01'.07 S	137° 35'.10 E
Aus 136 [167/2017]			
Insert	accompanying note	32° 57'.00 S	137° 37'.20 E
Aus 137 [12/2018]			
Insert	accompanying note	34° 51'.65 S	138° 30'.75 E
Aus 138 [703/2017]			
Insert	accompanying note	34° 49'.45 S	138° 27'.25 E
Aus 139 (plan, Macdonnell Sound) [653/2017]			
Insert	accompanying note in N border	34° 54'.00 S	137° 52'.70 E
Aus 140 (plan, Portland) [707/2016]			
Insert	accompanying note	38° 21'.55 S	141° 36'.55 E

155 AUSTRALIA - SOUTH AUSTRALIA - Macdonnell Sound - Edithburgh - Light amended

Department of Planning, Transport and Infrastructure SA Notice 5/2018

Aus 139 (plan, Macdonnell Sound) [154/2018]			
Replace	light with light, <i>Fl.3s 4M</i>	35° 05'.1 S	137° 45'.0 E
Delete	light sectors and legends emanating from light	35° 05'.1 S	137° 45'.0 E
Aus 485 [974/2017]			
Delete	light	35° 05'.1 S	137° 45'.0 E
	legend, Jetty	35° 04'.6 S	137° 46'.0 E
Aus 781 [972/2017]			
Replace	light with light, <i>Fl.3s 4M</i>	35° 05'.1 S	137° 45'.0 E
Delete	light sectors and legends emanating from light	35° 05'.1 S	137° 45'.0 E

156 AUSTRALIA - SOUTH AUSTRALIA - Port Adelaide - Nav aids

Australian Hydrographic Office

Aus 130 [154/2018]

Insert	light, (<i>F Day</i>) at pylon	34° 47'.018 S	138° 31'.141 E
	light, (<i>F Day</i>) at pylon	34° 46'.832 S	138° 30'.770 E

Aus 137 [154/2018]

Insert	starboard lateral topmark	34° 49'.391 S	138° 30'.551 E
	light, (<i>F Day</i>) at pylon	34° 47'.018 S	138° 31'.141 E
	light, (<i>F Day</i>) at pylon	34° 46'.832 S	138° 30'.770 E
Move	chimney	34° 48'.39 S	138° 31'.24 E
	to	34° 48'.399 S	138° 31'.266 E

157 AUSTRALIA - TASMANIA - Tasman Peninsula - Cheverton Rock - Historic wreck

Parks and Wildlife Service Tasmania

Aus 796 [867/2017]

Insert	safe clearance depth, 60m, enclosed by danger circle, with magenta legend, <i>Historic Wk (see Note)</i>	43° 07'.44 S	148° 02'.11 E
--------	--	--------------	---------------

Aus 797 [105/2017]

Insert	safe clearance depth, 60m, enclosed by danger circle, with magenta legend, <i>Historic Wk (see Note)</i>	43° 07'.44 S	148° 02'.11 E
--------	--	--------------	---------------

158 SOLOMON ISLANDS - Florida Islands - Depths

Australian Hydrographic Office

SLB 201 [21/2018]

Insert	depth, 18 ₂ m, enclosed by contour	08° 59'.51 S	159° 58'.17 E
--------	---	--------------	---------------

SLB 303 [18/2018]

Insert	depth, 18 ₂ m, enclosed by contour	08° 59'.51 S	159° 58'.17 E
--------	---	--------------	---------------

SLB 304 [18/2018]

Insert	depth, 18 ₂ m, enclosed by contour	08° 59'.51 S	159° 58'.17 E
--------	---	--------------	---------------

159(T)/2018 AUSTRALIA - QUEENSLAND - Boyne River to Gladstone - Dredging operations

Maritime Safety Queensland Notice 52(T)/2018

The barge *Steel Ranger* and tug *HT Salute* are conducting dredging operations at the entrance to Boyne River (23° 55'.57 S 151° 22'.00 E). Vessels will transit between dredging area and Gladstone Boat Harbour (23° 49'.85 S 151° 14'.75 E).

Vessels will display appropriate lights and shapes and will monitor VHF Ch 16, 13, 15 and 82.

Mariners are advised to navigate with caution in the area.

Chart temporarily affected - Aus 244 - Aus 245 - Aus 246 - Aus 271

160(T)/2018 AUSTRALIA - QUEENSLAND - Brisbane River - Inner Bar Reach - Light buoy moved

Former Notice - 1089(T)/2017 is cancelled

Maritime Safety Queensland Notice 51(T)/2018

A special cylindrical light buoy, *Fl.Y.4s*, exists in position 27° 21'.47 S 153° 10'.40 E.

Chart temporarily affected - Aus 236 - Aus 237

161(T)/2018 AUSTRALIA - QUEENSLAND - Fitzroy River - Wreck

Former Notice - 211(T)/2013 is cancelled

Australian Hydrographic Office

Cancel this notice on receipt.

Chart formerly affected - Aus 819

162(T)/2018 AUSTRALIA - QUEENSLAND - Mackay - Harbour works

Maritime Safety Queensland Notice 39(T)/2018

Workboat *Water Beetle* is conducting harbour works at Berth 4 (21° 06'.33 S 149° 13'.46 E) and 5 (21° 06'.20 S 149° 13'.67 E).

Vessels will monitor VHF 10, 13 and 16.

Mariners are advised to navigate with caution in the area.

Chart temporarily affected - Aus 250

163(T)/2018 AUSTRALIA - QUEENSLAND - Mooloolaba - Shoaling

Former Notice - 1037(T)/2017 is cancelled

Maritime Safety Queensland Notice 42(T)/2018

A shoal patch exists from the end of the eastern breakwater (26° 40'.74 S 153° 07'.95 E) extending in a westerly direction towards the centreline of the channel with least depths as follows:

<i>Position</i>	<i>Depth</i>
26° 40'.74 S 153° 07'.89 E	1.0m
26° 40'.75 S 153° 07'.92 E	1.5m

Mariners are advised to navigate with caution in the area.

Chart temporarily affected - Aus 235

164(T)/2018 AUSTRALIA - QUEENSLAND - Red Island Point - Wreck

Maritime Safety Queensland Notice 37(T)/2018

A wreck marked by a special light buoy, *Fl.Y.4s*, exists in position 10° 50'.85 S 142° 21'.72 E.

Chart temporarily affected - Aus 294

165(T)/2018 AUSTRALIA - NORTHERN TERRITORY - Darwin - Middle Passage - Light buoy restored

Former Notice - 120(T)/2018 is cancelled

Department of Infrastructure, Planning and Logistics NT Notice 7(T)/2018

Cancel this notice on receipt.

Chart formerly affected - Aus 25

166(T)/2018 AUSTRALIA - WESTERN AUSTRALIA - Bunbury - Shoaling removed

Former Notice - 1098(T)/2017 is cancelled

Southern Ports Authority , Department of Transport WA

Cancel this notice on receipt.

Chart formerly affected - Aus 115

167(T)/2018 AUSTRALIA - WESTERN AUSTRALIA - Exmouth Plateau - Survey operations

Chevron Australia Pty Ltd

MV *Skandi Singapore* and an AUV are conducting survey operations in an area bounded by the following positions:

19° 40'.72 S 114° 34'.32 E

19° 49'.19 S 114° 50'.08 E

19° 54'.92 S 114° 50'.08 E

19° 54'.92 S 114° 45'.08 E

19° 58'.99 S 114° 45'.08 E

19° 58'.66 S 114° 34'.11 E

19° 48'.30 S 114° 25'.29 E.

Chart temporarily affected - Aus 328

168(T)/2018 AUSTRALIA - WESTERN AUSTRALIA - Muiron Islands - Pipeline operations; light buoys; ship to ship transfer

Former Notice - 121(T)/2018 is cancelled

Maersk Supply Service , Department of Transport , Technip FMC Oceania

Special light buoys, *Fl.4s*, have been established in positions 21° 25'.29 S 114° 04'.33 E and 21° 26'.11 S 114° 04'.73 E.

Vessel *Global 1201* and support vessels are conducting pipe laying operations in the vicinity of position 21° 25'.75 S 114° 05'.07 E.

Ship to ship transfer operations will be conducted in position 21° 58'.70 S 114° 13.05 E.

All vessels will display appropriate colours and shapes.

Chart temporarily affected - Aus 328 - Aus 329 - Aus 744 - Aus 745

169(T)/2018 AUSTRALIA - WESTERN AUSTRALIA - Perth - Cable operations northwestwards

Department of Transport WA Notice 37/2018

Vessels *Robert Purnell* and *Pegasus V* are conducting cable laying operations between positions 31° 56'.03 S 115° 45'.04 E and 31° 52'.58 S 115° 40'.49 E.

Vessels will display appropriate lights and shapes and will monitor VHF Ch 14 & Ch 16.

Mariners are advised to navigate with caution in the area.

Chart temporarily affected - Aus 112 - Aus 754

170(T)/2018 AUSTRALIA - WESTERN AUSTRALIA - Rankin Bank - Subsea operations completed

Former Notice - 80(T)/2018 is cancelled
Australian Maritime Safety Authority

Cancel this notice on receipt.

Chart formerly affected - Aus 327 - Aus 4723 (INT 723)

171(P)/2018 AUSTRALIA - WESTERN AUSTRALIA - Wyndham - Roe Bank - Shoaling

Former Notice - 81(T)/2018 is cancelled
Department of Transport WA

Latest survey shows shoaler depths than those charted may exist between Middle Ground (15° 17'.85 S 128° 05'.70 E) and Secondary Channel (15° 19'.85 S 128° 06'.57 E), with least depths as follows:

<i>Position</i>	<i>Depth</i>
15° 18'.29 S 128° 05'.83 E	4.0m
15° 18'.73 S 128° 05'.29 E	3.8m
15° 18'.88 S 128° 05'.20 E	2.7m
15° 19'.07 S 128° 05'.17 E	0.2m
15° 19'.21 S 128° 06'.10 E	1.2m
15° 19'.82 S 128° 06'.44 E	4.4m

Mariners are advised to navigate with caution in the area.

Chart which will be affected - Aus 32

172(T)/2018 AUSTRALIA - SOUTH AUSTRALIA - Cape Banks - Light range reduced

Australian Maritime Safety Authority Auscoast Warning 19/2018

The light, *Fl(2)10s 25m 18M* (37° 53'.85 S 140° 22'.60 E), has been altered to *Fl(2)10s 25m 11M*.

Chart temporarily affected - Aus 348 - Aus 4709 (INT 709) - Aus 4728 (INT 728)

173(T)/2018 AUSTRALIA - SOUTH AUSTRALIA - Cape Jaffa - Shoaling

Department of Planning, Transport and Infrastructure SA Notice 3/2018

Shoaling has occurred at the entrance to Cape Jaffa Marina (36° 56'.18 S 139° 41'.84 E).

Mariners are advised to navigate with caution in the area.

Chart temporarily affected - Aus 127

174(T)/2018 AUSTRALIA - SOUTH AUSTRALIA - Kangaroo Island - Emu Bay - Light relit

Former Notice - 124(T)/2018 is cancelled
Department of Planning, Transport and Infrastructure SA Notice 7/2018

Cancel this notice on receipt.

Chart formerly affected - Aus 129

175(T)/2018 AUSTRALIA - VICTORIA - Port Campbell - Drilling operations southwestwards

Cooper Energy

Drill rig *Ocean Monarch* and support vessels are conducting subsea operations associated with the maintenance of the Casino production well (38° 47'.73 S 142° 44'.74 E).

Mariners are advised to navigate with caution in the area. 1.5M clearance requested.

Chart temporarily affected - Aus 349 - Aus 787

176(T)/2018 AUSTRALIA - VICTORIA - Port Phillip - Sandringham - Dredging operations

Parks Victoria Notice 64/2018

Dredging operations are in progress in the vicinity of position 37° 56'.55 S 144° 59'.47 E.

A submerged pipeline marked by unlit white buoys exists from the dredge to the beach to the northeast.

Vessels will display appropriate shapes and colours.

Mariners are advised to navigate with caution in the area.

Chart temporarily affected - Aus 143 - Aus 155

177(T)/2018 AUSTRALIA - VICTORIA - Port Phillip - Mud Islands - Light buoy recovered

Former Notice - 905(T)/2016 is cancelled

Parks Victoria , Victorian Fisheries Authority

Cancel this notice on receipt.

Chart formerly affected - Aus 143 - Aus 158

178(T)/2018 AUSTRALIA - VICTORIA - Port Phillip - Geelong - Barge removed

Former Notice - 998(T)/2017 is cancelled

Parks Victoria Notice 282(T)/2017

Cancel this notice on receipt.

Chart formerly affected - Aus 153

179(T)/2018 AUSTRALIA - VICTORIA - Port Phillip - Corio Bay - Light buoys; AIS

Former Notice - 86(T)/2018 is cancelled

Victorian Regional Channels Authority Notices 16(T), 17(T), 72(T)/2018

Starboard lateral pillar light buoys exist as follows:

<i>Position</i>	<i>Remarks</i>
38° 06'.01 S 144° 22'.92 E	<i>F.Iso.G.3s TB2</i>
38° 06'.65 S 144° 22'.34 E	<i>F.Iso.G.3s TB1</i>

Virtual AIS starboard lateral marks also exist at the above positions.

Chart temporarily affected - Aus 153 - Aus 157

180(T)/2018 AUSTRALIA - VICTORIA - Portland Harbour - Dredging operations

Port of Portland Notice 24/2018

The vessel *Andrew Wilson* is conducting dredging operations in the entrance to Portland Harbour (38° 20'.67 S 141° 37'.31 E).

The vessel will display appropriate lights and shapes and will monitor VHF Ch 14 & 16

The area around the northern end of Main Breakwater is a prohibited zone (38° 20'.67 S 141° 37'.46 E).

Mariners are advised to use the western half of the entrance channel and to navigate with caution in the area.

Chart temporarily affected - Aus 140

181(T)/2018 AUSTRALIA - TASMANIA - Georges Bay - The Barway - Light buoy restored

Former Notice - 1103(T)/2017 is cancelled

Marine and Safety Tasmania Notice M23/2018

Cancel this notice on receipt.

Chart formerly affected - Aus 169

182(T)/2018 AUSTRALIA - TASMANIA - Prince of Wales Bay - Harbour works

Marine and Safety Tasmania Notice 30/2018

Works associated with the expansion of the Prince of Wales Bay Marina (42° 49'.64 S 147° 18'.18 E) are in progress.

Mariners are advised to navigate with caution in the area.

Chart temporarily affected - Aus 172

183(T)/2018 AUSTRALIA - TASMANIA - Spring Bay - Wreck

Marine and Safety Tasmania Notice M26/2018

A stranded wreck exists in position 42° 31'.24 S 147° 55'.13 E.

Chart temporarily affected - Aus 175

184(T)/2018 SOLOMON ISLANDS - New Georgia Island - Munda Point to South Island - Lights unlit

Solomon Islands Maritime Safety Administration 5(T)/2017

The light beacon *Fl.10s 11m 10M* (8° 48'.87 S 157° 45'.24 E) is unlit.

The rear lead light beacon *Fl(3)5M* (8° 19'.83 S 157° 14'.24 E) is unlit.

Chart temporarily affected - Aus 4604 (INT 604) - Aus 4623 (INT 623) - Aus 4634 (INT 634) - SLB 302

II

HYDROGRAPHIC REPORTS

NIL

III

NAVIGATION WARNINGS

The Australian Hydrographic Office will no longer compile Section III of the Australian Notices to Mariners. For the most up to date navigation warnings please refer to:

AMSA Navigation Warnings

<http://amsa.gov.au/search-and-rescue/distress-and-safety-comms/msi/msi-email/index.asp>

New Zealand Notices to Mariners (Navarea XIV warnings)

<http://www.linz.govt.nz/sea/maritime-safety/notices-mariners>

To accompany Australian Notice to Mariners 154/2018

DREDGED AREAS

Depths in dredged areas, although generally maintained, may be less than charted. For the latest information, consult the Harbour Master.

Note for chart Aus 120

To accompany Australian Notice to Mariners 154/2018

DREDGED AREAS

Depths in dredged areas, although generally maintained, may be less than charted. For the latest information, consult the Harbour Master.

Note for chart Aus 130

To accompany Australian Notice to Mariners 154/2018

DREDGED AREAS

Depths in dredged areas, although generally maintained, may be less than charted. For the latest information, consult the Harbour Master.

Note for chart Aus 134

To accompany Australian Notice to Mariners 154/2018

DREDGED AREAS

Depths in dredged areas, although generally maintained, may be less than charted. For the latest information, consult the Harbour Master.

Note for chart Aus 136

To accompany Australian Notice to Mariners 154/2018

DREDGED AREAS

Depths in dredged areas, although generally maintained, may be less than charted. For the latest information, consult the Harbour Master.

Note for chart Aus 138

To accompany Australian Notice to Mariners 154/2018

DREDGED AREAS

Depths in dredged areas, although generally maintained, may be less than charted. For the latest information, consult the Harbour Master.

Note for chart Aus 140

To accompany Australian Notice to Mariners 154/2018

DREDGED AREAS

Depths in dredged areas, although generally maintained, may be less than charted. For the latest information, consult the Harbour Master.

Note for chart Aus 122

To accompany Australian Notice to Mariners 154/2018

DREDGED AREAS

Depths in dredged areas, although generally maintained, may be less than charted. For the latest information, consult the Harbour Master.

Note for chart Aus 133

To accompany Australian Notice to Mariners 154/2018

DREDGED AREAS

Depths in dredged areas, although generally maintained, may be less than charted. For the latest information, consult the Harbour Master.

Note for chart Aus 135

To accompany Australian Notice to Mariners 154/2018

DREDGED AREAS

Depths in dredged areas, although generally maintained, may be less than charted. For the latest information, consult the Harbour Master.

Note for chart Aus 137

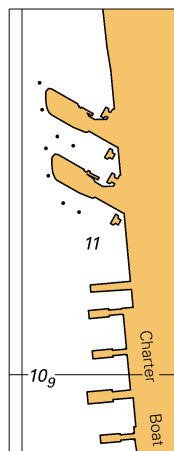
To accompany Australian Notice to Mariners 154/2018

DREDGED AREAS

Depths in dredged areas, although generally maintained, may be less than charted. For the latest information, consult the Harbour Master.

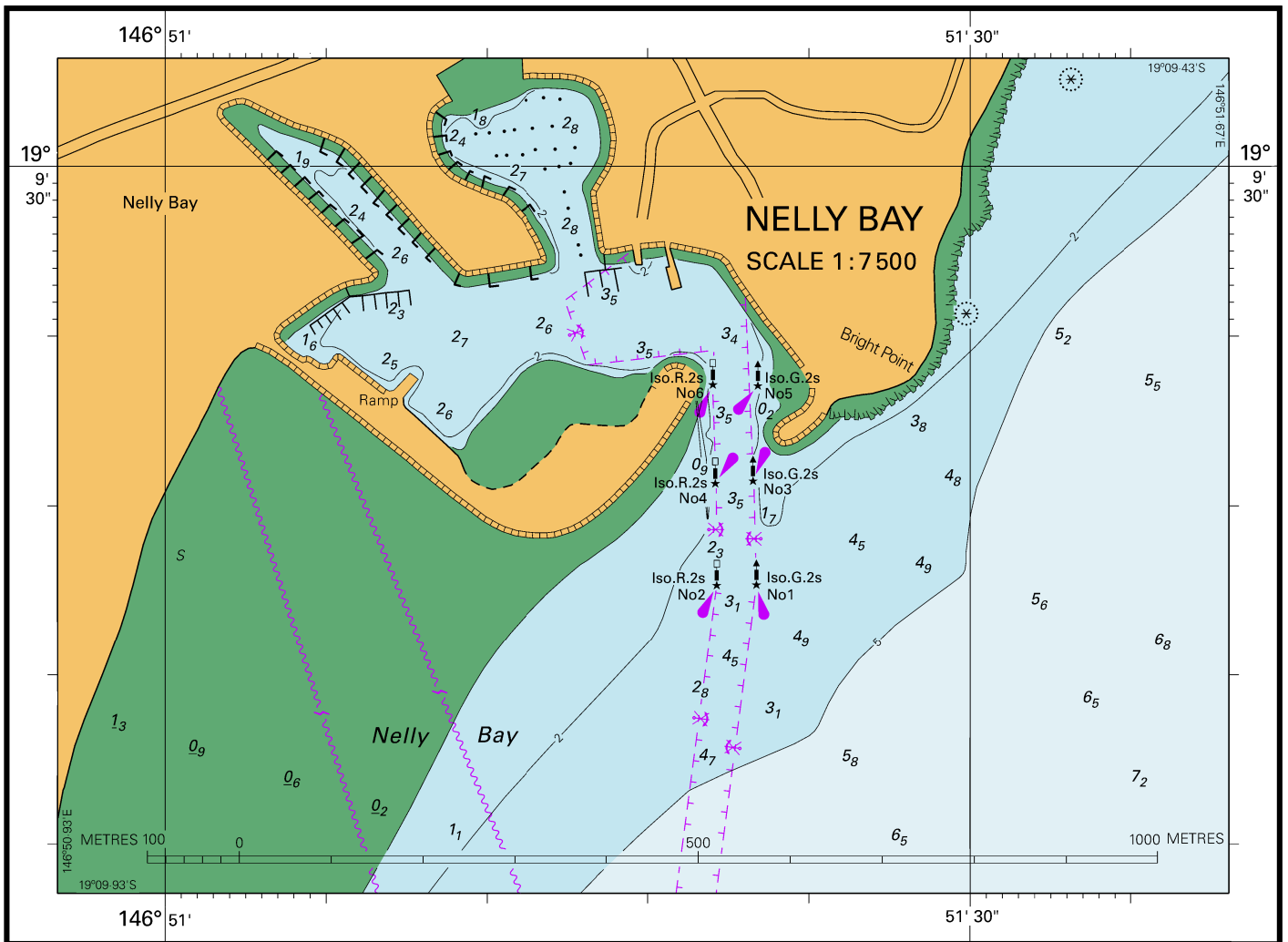
Note for chart Aus 139

To accompany Australian Notice to Mariners 140/2018



© Commonwealth of Australia 2018
Block for Chart Aus 202 (22.4 x 58.6mm)

To accompany Australian Notice to Mariners 144/2018



Block for Chart Aus 256

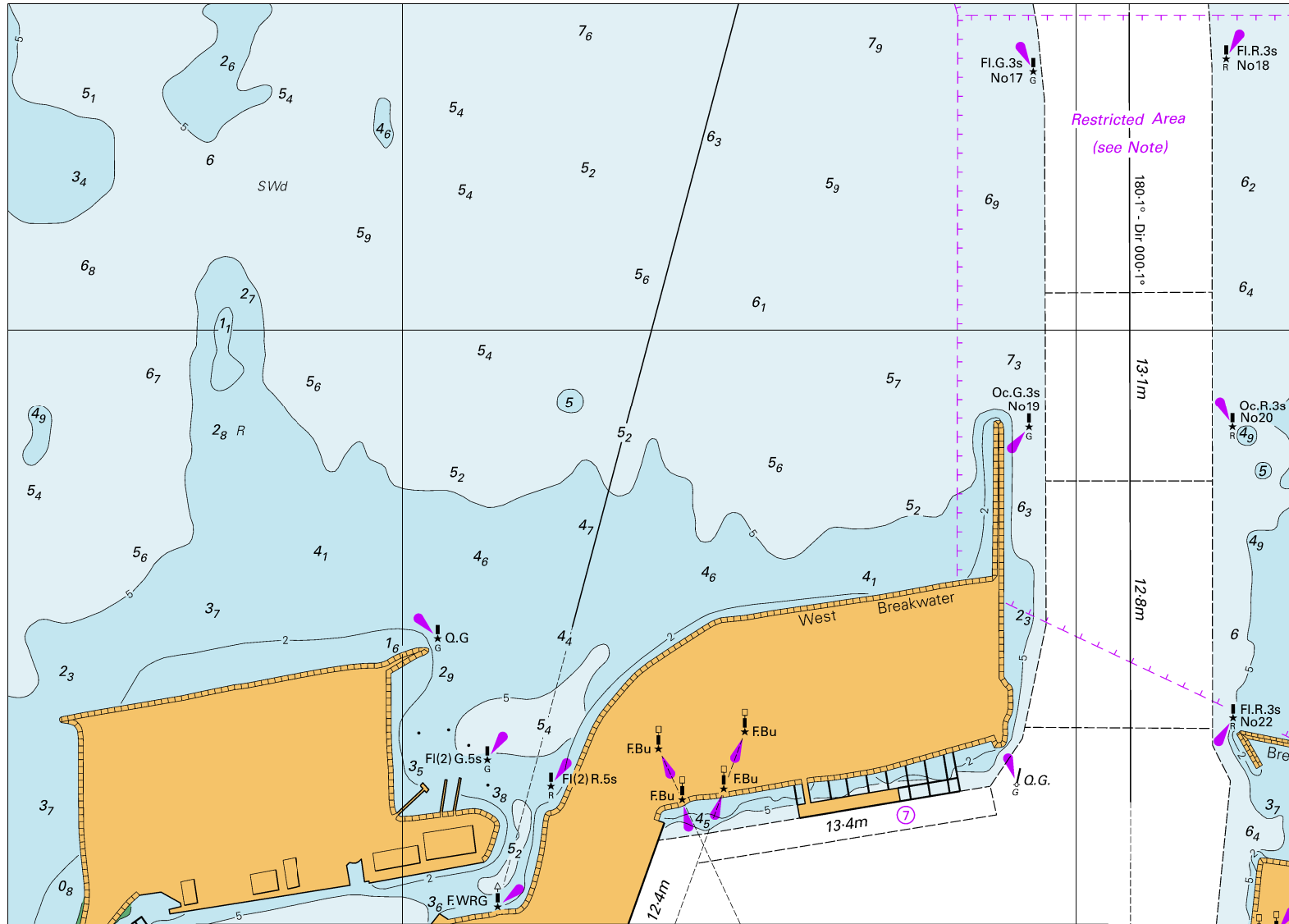
© Commonwealth of Australia 2018

(170.0 x 121.1mm)

(121.6 x 114.1mm)



To accompany Australian Notice to Mariners 150/2018

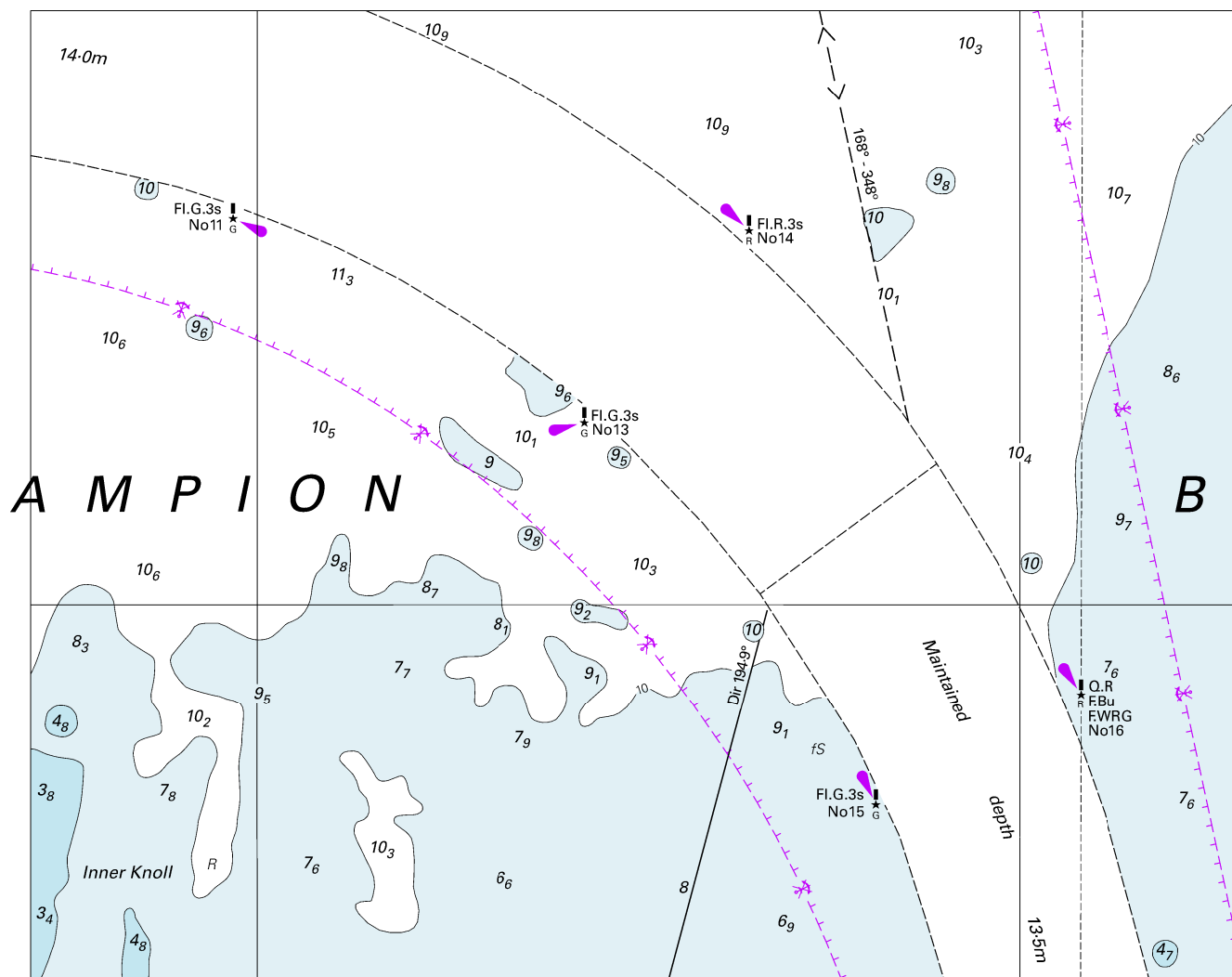


Block A for Chart Aus 81

© Commonwealth of Australia 2018

(207.7 x 148.3mm)

To accompany Australian Notice to Mariners 150/2018

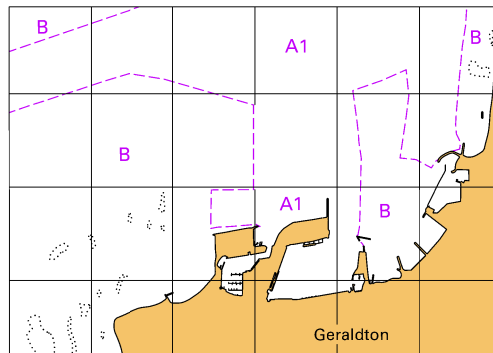


Block B for Chart Aus 81

© Commonwealth of Australia 2018

(171.5 x 138.0mm)

To accompany Australian Notice to Mariners 150/2018



© Commonwealth of Australia 2018
Block D for Chart Aus 81 (65.0 x 46.0mm)