



2 November 2018

Edition 22

AUSTRALIAN NOTICES TO MARINERS

Notices 945 - 999

Published fortnightly by the Australian Hydrographic Office



Australian Notices to Mariners are the authority for correcting charts and publications published by the Australian Hydrographic Office covering Australia, Papua New Guinea, Solomon Islands, Australian Antarctic Territory and Timor-Leste.

Commodore F.T. FREEMAN RAN
Hydrographer of Australia

SECTIONS.

- I. **Australian Notices to Mariners, including blocks and notes.**
- II. **Hydrographic Reports.**
- III. **Navigational Warnings.**

SUPPLEMENTS.

- I. **Tracings**
- II. **Cumulative List of Australian Notices to Mariners.**
- III. **Cumulative List of Temporary and Preliminary Australian Notices to Mariners.**
- IV. **Temporary and Preliminary Notices in force.**
- V. **Amendments to Admiralty List of Lights and Fog Signals (Vol K), Radio Signals (NP 281(2), 282, 283(2), 285, 286(4)) and Sailing Directions (NP 9, 13, 14, 15, 33, 34, 35, 36, 39, 44, 51, 60, 61, 62, 100, 136).**

© Commonwealth of Australia 2018

This work is copyright. Apart from any use permitted under the Copyright Act 1968, no part may be reproduced by any process, adapted, communicated or commercially exploited without prior written permission from The Commonwealth represented by the Australian Hydrographic Office.

IMPORTANT NOTICE

This edition of Notices to Mariners includes all significant information affecting AHO products which the AHO has become aware of since the last edition. All reasonable efforts have been made to ensure the accuracy and completeness of the information, including third party information, on which these updates are based. The AHO regards third parties from which it receives information as reliable, however the AHO cannot verify all such information and errors may therefore exist. The AHO does not accept liability for errors in third party information.

GENERAL INSTRUCTIONS

The substance of these notices should be inserted on the charts affected.

Bearings are referred to the true compass and are reckoned clockwise from North; those relating to lights are given as seen by an observer from seaward.

Positions quoted in notices relate to WGS84 which is the horizontal datum for all charts produced by the Australian Hydrographic Office.

The range quoted for a light is its nominal range.

Depths are with reference to the chart datum of each chart. Heights are above mean high water springs or mean higher high water, as appropriate.

The capital letter (P) or (T) after the number of any notice denotes a preliminary or temporary notice respectively, which are contained separately at the end of the permanent notices.

REPORTING OF DANGERS

Mariners are particularly requested to notify the AUSTRALIAN HYDROGRAPHIC OFFICE, Locked Bag 8801 Wollongong, NSW 2500 (Fax 02-4223 6599, e-mail datacentre@hydro.gov.au or, alternatively by filling in and submitting the [Hydrographic Notes](#) forms located on the web site – www.hydro.gov.au), immediately on the discovery of new dangers or suspected dangers to navigation. For changes or defects in aids to navigation notify AusSAR (Fax 02-6230 6868 or email rccaus@amsa.gov.au).

AUTHORISED USE

Copies of Australian notices are available free of charge from the Australian Hydrographic Office (AHO) website (www.hydro.gov.au) and through the eNotices (email) service (www.hydro.gov.au/enotices/enotices.htm).

Individual Notices may be copied for the purpose of inserting Notice substance on official charts and publications. Paper copies may be printed by chart agents and distributed to customers on a cost recovery basis. Participating chart agents are listed on the AHO website as providing a 'Paper Notices to Mariners' service (www.hydro.gov.au/webapps/jsp/agents/agents-list.jsp). Copies of the notices may not be sold for profit without prior written agreement.

NUMERICAL INDEX OF NOTICES TO MARINERS

Edition No 22

Notices	Aus Chart, INT Chart, ENC Cell, AHP, BA Pubs
945	Products - New Charts, New Editions, Withdrawn Charts
946	Aus 208
947	Aus 202
948	Aus 816, 818
949	Aus 237, 238
950	Aus 832, 835
951	Aus 700, 816, 817, 818, 819, 821, 822, 823, 824, 825, 826, 827, 828, 829, 830, 831, 832, 833, 835, 839, 840, 841
952	Aus 4621, INT 621
953	Aus 828
954	Aus 240, 815, 817
955	Aus 652
956	Aus 389, 651
957	Aus 377
958	Aus 377
959	Aus 309, 4721, INT 721
960	Aus 335, 756
961	Aus 319, 4603, 4721, 4722, INT 603, 721, 722
962	Aus 111, 117
963	Aus 81, 332, 751
964	Aus 327
965	Aus 600, INT 9036
966	Aus 793, 794
967	Aus 164
968	Aus 177
969	Aus 4621, 4622, 4623, 4634, INT 621, 622, 623, 634, SLB 301, 302
970(T)	Aus 813
971(T)	Aus 238
972(T)	Aus 249, 250
973(T)	Aus 249, 250
974(T)	Aus 235
975(T)	Aus 236
976(T)	Aus 236, 814
977(T)	Aus 256, 827
978(T)	Aus 247
979(T)	Aus 260, 261, 367, 822
980(P)	Aus 240, 815, 817
981(T)	Aus 386, 520, 521, 522, 523, 4620, 4621, 4622, INT 620, 621, 622
982(T)	Aus 508, 625
983(T)	Aus 387, 388
984(T)	Aus 392, 393, 543, 666, 4622, INT 622
985(T)	Aus 389, 651, 4622, INT 622
986(T)	Aus 22, 309, 310, 722
987(T)	Aus 901
988(T)	Aus 325, 326, 739
989(T)	Aus 57
990(T)	Aus 116
991(T)	Aus 327, 742
992(T)	Aus 327, 328
993(T)	Aus 328, 329, 744, 4723, 4725, INT 723, 725
994(T)	Aus 328, 4723, 4725, INT 723, 725
995(T)	Aus 116
996(T)	Aus 171
997(T)	Aus 177
998(T)	Aus 177
999(T)	Aus 4604, 4621, 4622, 4623, 4634, INT 604, 621, 622, 623, 634, SLB 301, 302

NUMERICAL INDEX OF CHARTS AFFECTED

Edition No 22

Aus Chart	Notices
Aus 22	986(T)
Aus 57	989(T)
Aus 81	963
Aus 111	962
Aus 116	990(T), 995(T)
Aus 117	962
Aus 164	967
Aus 171	996(T)
Aus 177	968, 997(T), 998(T)
Aus 202	947
Aus 208	946
Aus 235	974(T)
Aus 236	975(T), 976(T)
Aus 237	949
Aus 238	949, 971(T)
Aus 240	954, 980(P)
Aus 247	978(T)
Aus 249	972(T), 973(T)
Aus 250	972(T), 973(T)
Aus 256	977(T)
Aus 260	979(T)
Aus 261	979(T)
Aus 309	959, 986(T)
Aus 310	986(T)
Aus 319	961
Aus 325	988(T)
Aus 326	988(T)
Aus 327	964, 991(T), 992(T)
Aus 328	992(T), 993(T), 994(T)
Aus 329	993(T)
Aus 332	963
Aus 335	960
Aus 367	979(T)
Aus 377	957, 958
Aus 386	981(T)
Aus 387	983(T)
Aus 388	983(T)
Aus 389	956, 985(T)
Aus 392	984(T)
Aus 393	984(T)
Aus 508	982(T)
Aus 520	981(T)
Aus 521	981(T)
Aus 522	981(T)
Aus 523	981(T)
Aus 543	984(T)
Aus 600	965
Aus 625	982(T)
Aus 651	956, 985(T)
Aus 652	955
Aus 666	984(T)
Aus 700	951
Aus 722	986(T)
Aus 739	988(T)

Aus Chart	Notices
Aus 742	991(T)
Aus 744	993(T)
Aus 751	963
Aus 756	960
Aus 793	966
Aus 794	966
Aus 813	970(T)
Aus 814	976(T)
Aus 815	954, 980(P)
Aus 816	948, 951
Aus 817	951, 954, 980(P)
Aus 818	948, 951
Aus 819	951
Aus 821	951
Aus 822	951, 979(T)
Aus 823	951
Aus 824	951
Aus 825	951
Aus 826	951
Aus 827	951, 977(T)
Aus 828	951, 953
Aus 829	951
Aus 830	951
Aus 831	951
Aus 832	950, 951
Aus 833	951
Aus 835	950, 951
Aus 839	951
Aus 840	951
Aus 841	951
Aus 901	987(T)
Aus 4603	961
Aus 4604	999(T)
Aus 4620	981(T)
Aus 4621	952, 969, 981(T), 999(T)
Aus 4622	969, 981(T), 984(T), 985(T), 999(T)
Aus 4623	969, 999(T)
Aus 4634	969, 999(T)
Aus 4721	959, 961
Aus 4722	961
Aus 4723	993(T), 994(T)
Aus 4725	993(T), 994(T)
SLB 301	969, 999(T)
SLB 302	969, 999(T)

INT Chart	Notices
INT 9036	965
INT 603	961
INT 604	999(T)
INT 620	981(T)

INT Chart	Notices
INT 621	952, 969, 981(T), 999(T)
INT 622	969, 981(T), 984(T), 985(T), 999(T)
INT 623	969, 999(T)
INT 634	969, 999(T)
INT 721	959, 961
INT 722	961
INT 723	993(T), 994(T)
INT 725	993(T), 994(T)

945 AUSTRALIA - Products - New Charts, New Editions, Withdrawn Charts
Australian Hydrographic Service

New Charts

Chart	Title and Geographical limits	Scale	Publication Date	Remarks
NIL				

New Electronic Navigation Chart (Aus ENC)

Cell Name	Title	Publication Date	Remarks
NIL			

New Editions and Withdrawn Charts

Chart	Title	Scale	Publication Date	Remarks
NIL				

Australian National Tides Tables 2019 (AusTides 2019)

AHP No	Title	Recommended retail price (incl GST)	Remarks
AHP 114	Australian National Tides Tables 2019 (AusTides 2019)	\$59.95	Electronic Tides Tables (AusTides 2019) for Australia, Antarctica, Papua New Guinea, Solomon Islands and Timor-Leste. Provides tidal data for 2018 and 2019. Available from accredited distribution agents.

Chart permanently withdrawn

Charts listed above as withdrawn no longer meet chart carriage requirements and should be marked as "superseded" and replaced with the new chart/ new edition listed prior to passage through the area covered by the new chart.

When placing orders with a chart agent between notice of forthcoming edition and its publication, mariners should advise whether their order pertains to the current edition or the new edition.

For further details refer to the AHS website at www.hydro.gov.au for new edition and new chart stock arrival information.

946 AUSTRALIA - NEW SOUTH WALES - Newcastle - Hunter River - South Arm - Infrastructure; nav aids
Port Authority of New South Wales

Aus 208 [806/2018]

Insert	accompanying block A	32° 53'.35 S	151° 45'.55 E
--------	----------------------	--------------	---------------

Aus 208 (Hunter River (South Arm)) [806/2018]

Insert	accompanying block B	32° 53'.13 S	151° 45'.48 E
--------	----------------------	--------------	---------------

947 AUSTRALIA - NEW SOUTH WALES - Rozelle Bay - Depth

Port Authority of New South Wales

Aus 202 [900/2018]

Insert	depth, 1 _g m, enclosed by contour	33° 52'.262 S	151° 10'.939 E
--------	--	---------------	----------------

948 AUSTRALIA - QUEENSLAND - Breaksea Spit - Depth northwards

Geoscience Australia

Aus 816 [337/2016]

Insert	depth, 24 ₄ m, and extend contour NW to enclose	24° 23'.14 S	153° 11'.31 E
--------	--	--------------	---------------

Delete	depth, 42m	24° 23'.0 S	153° 11'.4 E
--------	------------	-------------	--------------

Aus 818 [908/2018]

Insert	depth, 24 ₄ m, and extend contour NW to enclose	24° 23'.14 S	153° 11'.31 E
--------	--	--------------	---------------

Delete	depth, 42m	24° 23'.0 S	153° 11'.4 E
--------	------------	-------------	--------------

949 AUSTRALIA - QUEENSLAND - Brisbane River - Lytton and Quarantine Reach - Infrastructure; depths

Maritime Safety Queensland

Aus 237 [855/2018]

Insert	accompanying block	27° 24'.9 S	153° 08'.6 E
--------	--------------------	-------------	--------------

Aus 238 [808/2018]

Insert	accompanying block	27° 24'.9 S	153° 08'.6 E
--------	--------------------	-------------	--------------

950 AUSTRALIA - QUEENSLAND - Cape Flattery to Cairncross Islets - Tidal streams

Australian Maritime Safety Authority

Aus 832 [513/2018]

Insert	accompanying block	15° 11'.0 S	145° 03'.0 E
	tidal stream data, desig C	14° 29'.51 S	144° 56'.74 E

Delete	depth, 12 ₈ m	14° 29'.7 S	144° 56'.7 E
--------	--------------------------	-------------	--------------

Aus 835 [777/2017]

Insert	accompanying block	12° 39'.0 S	143° 08'.0 E
	tidal stream data, desig A	11° 56'.00 S	143° 15'.46 E

951 AUSTRALIA - QUEENSLAND - Great Barrier Reef - Ship reporting system

Maritime Safety Queensland

Note: Larger scale charts will be updated in due course.

Aus 700 [810/2016]

Insert	two-way radio reporting point, orient 045°-225°, with magenta legend, <i>Booby VHF 14 (see SRS Note)</i>	10° 37'.00 S	141° 49'.00 E
	magenta legend, <i>Endeavour VHF 14</i>	10° 49'.00 S	142° 15'.00 E

Delete	radio reporting point and legend SRS (see Note)	10° 36'.9 S	141° 49'.1 E
	desig, E	10° 48'.9 S	142° 15'.0 E

Aus 816 [948/2018]

Insert	magenta legend, <i>Sandy Cape VHF 14</i>	24° 30'.00 S	153° 35'.00 E
--------	--	--------------	---------------

Delete	desig, Z3	24° 30'.0 S	153° 35'.0 E
--------	-----------	-------------	--------------

Aus 817 [908/2018]

Delete	radio reporting point and legend SRS (see Note)	24° 30'.0 S	152° 25'.0 E
	radio reporting point and legend SRS (see Note)	24° 30'.0 S	152° 48'.0 E

Aus 818 [948/2018]

Delete	radio reporting point and legend SRS (see Note)	23° 54'.0 S	151° 45'.0 E
	radio reporting point and legend SRS (see Note)	24° 30'.0 S	152° 25'.0 E
	radio reporting point and legend SRS (see Note)	24° 30'.0 S	152° 48'.0 E

Aus 819 [239/2018]

Delete	radio reporting point and legend SRS (see Note)	23° 54'.0 S	151° 45'.0 E
	radio reporting point and legend SRS (see Note)	23° 45'.0 S	151° 31'.5 E
	radio reporting point and legend SRS (see Note)	23° 23'.0 S	151° 03'.0 E

Aus 821 [498/2017]

Insert	magenta legend, <i>Blossom VHF 14</i>	19° 44'.00 S	150° 25'.50 E
--------	---------------------------------------	--------------	---------------

Delete	radio reporting point and legend SRS (see Note)	20° 36'.0 S	150° 15'.0 E
	desig, U	19° 44'.0 S	150° 25'.5 E

Aus 822 [403/2017]

Delete	radio reporting point and legend SRS (see Note)	21° 52'.5 S	150° 45'.0 E
--------	---	-------------	--------------

Aus 823 [810/2018]

Delete	radio reporting point and legend SRS (see Note)	21° 08'.0 S	149° 22'.0 E
	radio reporting point and legend SRS (see Note)	21° 12'.5 S	149° 30'.0 E
	radio reporting point and legend SRS (see Note)	21° 14'.0 S	149° 30'.0 E

Aus 824 [810/2018]

Delete	radio reporting point and legend SRS (see Note)	20° 12'.0 S	149° 14'.5 E
	radio reporting point and legend SRS (see Note)	20° 10'.0 S	148° 50'.0 E
	radio reporting point and legend SRS (see Note)	20° 33'.0 S	149° 00'.5 E

Aus 825 [436/2018]

Delete	radio reporting point and legend SRS (see Note)	20° 12'.0 S	149° 14'.5 E
	radio reporting point and legend SRS (see Note)	20° 10'.0 S	148° 50'.0 E

Aus 826 [390/2018]

Delete	radio reporting point and legend SRS (see Note)	19° 48'.0 S	148° 04'.0 E
	radio reporting point and legend SRS (see Note)	19° 16'.0 S	147° 30'.0 E
	radio reporting point and legend SRS (see Note)	19° 09'.0 S	147° 30'.0 E

Aus 827 [907/2018]

Delete	radio reporting point and legend SRS (see Note)	19° 16'.0 S	147° 30'.0 E
	radio reporting point and legend SRS (see Note)	19° 09'.0 S	147° 30'.0 E
	radio reporting point and legend SRS (see Note)	19° 08'.0 S	146° 57'.0 E
	radio reporting point and legend SRS (see Note)	19° 06'.0 S	146° 54'.0 E

Aus 828 [478/2018]

Insert	magenta legend, <i>Palm Passage VHF 14</i>	18° 15'.00 S	147° 05'.00 E
--------	--	--------------	---------------

Delete	radio reporting point and legend SRS (see Note)	18° 29'.0 S	146° 26'.0 E
--------	---	-------------	--------------

951	AUSTRALIA - QUEENSLAND - Great Barrier Reef - Ship reporting system		
	desig, R	18° 15'.0 S	147° 05'.0 E
Aus 829	[512/2018]		
Delete	radio reporting point and legend SRS (see Note)	17° 35'.0 S	146° 10'.0 E
	radio reporting point and legend SRS (see Note)	17° 40'.0 S	146° 16'.0 E
Aus 830	[1066/2017]		
Insert	magenta legend, <i>Grafton Passage VHF 11</i>	16° 40'.00 S	146° 12'.81 E
Delete	radio reporting point and legend SRS (see Note)	16° 48'.0 S	145° 51'.0 E
	desig, P	16° 40'.0 S	146° 12'.8 E
Aus 831	[476/2018]		
Delete	radio reporting point and legend SRS (see Note)	15° 43'.0 S	145° 23'.0 E
	radio reporting point and legend SRS (see Note)	15° 42'.0 S	145° 27'.7 E
	radio reporting point and legend SRS (see Note)	15° 01'.0 S	145° 24'.0 E
Aus 832	[950/2018]		
Delete	radio reporting point and legend SRS (see Note)	15° 01'.0 S	145° 24'.0 E
	radio reporting point and legend SRS (see Note)	14° 54'.0 S	145° 18'.0 E
Aus 833	[387/2018]		
Delete	radio reporting point and legend SRS (see Note)	14° 08'.2 S	144° 30'.0 E
Aus 835	[950/2018]		
Delete	radio reporting point and legend SRS (see Note)	12° 16'.0 S	143° 16'.0 E
	radio reporting point and legend SRS (see Note)	11° 35'.2 S	142° 57'.7 E
Aus 839	[959/2017]		
Delete	radio reporting point and legend SRS (see Note)	10° 25'.7 S	142° 33'.6 E
	radio reporting point and legend SRS (see Note)	10° 37'.8 S	142° 31'.1 E
	radio reporting point and legend SRS (see Note)	10° 36'.2 S	142° 32'.1 E
	radio reporting point and legend SRS (see Note)	10° 55'.0 S	142° 45'.0 E
Aus 840	[716/2018]		
Insert	magenta legend, <i>Bramble VHF 14</i>	9° 15'.00 S	143° 50'.00 E
Delete	radio reporting point and legend SRS (see Note)	9° 23'.9 S	143° 27'.0 E
	desig, A	9° 15'.1 S	143° 50'.0 E
Aus 841	[823/2017]		
Delete	radio reporting point and legend SRS (see Note)	10° 25'.7 S	142° 33'.6 E
952	AUSTRALIA - QUEENSLAND - Great Barrier Reef - Depths		
	Australian Hydrographic Office		
Aus 4621 (INT 621)	[906/2018]		
Insert	accompanying block	14° 42'.0 S	156° 20'.0 E
953	AUSTRALIA - QUEENSLAND - Halifax Bay - Firing practice area		
	Commonwealth of Australia		
	<i>On certain copies only</i>		
Aus 828	[951/2018]		
Delete	firing practice area limit and legend, MILITARY EXERCISE AREA (see Note), centred on	18° 49'.6 S	146° 40'.1 E

954 AUSTRALIA - QUEENSLAND - Wide Bay - Hook Point - Light; navline
Maritime Safety Queensland

Aus 240 [670/2018]

Amend	light to <i>Fl.3s 9M</i>	25° 47'.0 S	153° 04'.7 E
Delete	dashed and continuous line with legend, Dir 277.5°, emanating from light	25° 47'.0 S	153° 04'.7 E

Aus 815 [145/2018]

Amend	light to <i>Fl.3s 9M</i>	25° 47'.0 S	153° 04'.7 E
Delete	dashed and continuous line with legend, Dir 277.5°, emanating from light	25° 47'.0 S	153° 04'.7 E

Aus 817 [951/2018]

Amend	light to <i>Fl.3s 9M</i>	25° 47'.0 S	153° 04'.7 E
Delete	dashed and continuous line with legend, Dir 277.5°, emanating from light	25° 47'.0 S	153° 04'.7 E

955 PAPUA NEW GUINEA - Ali Island and Seleo Island - Depths
National Maritime Safety Authority PNG

Aus 652 (Aitape Roads) [1064/2016]

Insert	depth, <i>19₈m</i> , enclosed by contour	3° 08'.840 S	142° 27'.584 E
	depth, <i>14₈m</i> , enclosed by contour	03° 08'.861 S	142° 28'.149 E
	depth, <i>2₃m</i> , and extend contour SW to enclose	03° 07'.865 S	142° 28'.497 E
	depth, <i>1₅m</i> , enclosed by contour	03° 09'.361 S	142° 29'.314 E
	depth, <i>4₈m</i> , enclosed by contour	03° 09'.331 S	142° 29'.512 E
Delete	depth, <i>28₈m</i>	03° 09'.33 S	142° 29'.32 E
	depth, <i>16m</i>	03° 07'.87 S	142° 28'.52 E

956 PAPUA NEW GUINEA - Keresau Island - Depths
Fugro Survey Pty Ltd

Aus 389 [912/2018]

Replace	depth, <i>11₃m</i> , with depth, <i>6₄m</i>	3° 24'.3 S	143° 28'.5 E
---------	---	------------	--------------

Aus 651 [315/2018]

Insert	depth, <i>5m</i> , enclosed by contour	3° 23'.86 S	143° 28'.80 E
	depth, <i>6₇m</i> , semi enclosed by contour to W	3° 24'.18 S	143° 28'.78 E
	depth, <i>1₆m</i> , semi enclosed by contour to S	3° 23'.50 S	143° 25'.89 E
Replace	depth, <i>11₃m</i> , with depth, <i>6₄m</i>	3° 24'.3 S	143° 28'.5 E
	depth, <i>25₃m</i> , with depth, <i>18₉m</i> , enclosed by contour	3° 24'.2 S	143° 28'.3 E
Delete	depth, <i>30₈m</i>	3° 23'.8 S	143° 28'.7 E

957 AUSTRALIA - TORRES STRAIT - Bligh Entrance to Eastern Fields - ZOC diagram
Australian Hydrographic Office

Aus 377 [906/2018]

Insert	accompanying block	10° 45'.0 S	145° 48'.0 E
--------	--------------------	-------------	--------------

958 AUSTRALIA - TORRES STRAIT - Pandora Passage - Depths
CSIRO

Aus 377 [957/2018]

Insert	depth, <i>94m</i> , and extend contour SE to enclose	9° 37'.97 S	144° 36'.39 E
	depth, <i>88m</i> , enclosed by contour	9° 42'.01 S	144° 39'.73 E

959 AUSTRALIA - NORTHERN TERRITORY - Newby Shoal - Depth
 HMAS *Mermaid Leeuwin*

Aus 309 [855/2017]

Insert	depth, 36m, enclosed by contour with legend <i>Rep</i> (2018)	11° 47'.80 S	128° 56'.00 E
--------	---	--------------	---------------

Aus 4721 (INT 721) [99/2018]

Insert	depth, 36m, with legend <i>Rep</i>	11° 47'.8 S	128° 56'.0 E
--------	------------------------------------	-------------	--------------

Delete	depth, 56m	11° 48'.6 S	128° 55'.1 E
--------	------------	-------------	--------------

960 AUSTRALIA - WESTERN AUSTRALIA - Cape Leeuwin - Traffic separation scheme lane amended
 Australian Maritime Safety Authority

Aus 335 [149/2018]

Insert	magenta dashed line, between	34° 10'.50 S	114° 36'.90 E
		34° 00'.00 S	114° 33'.00 E

Delete	magenta dashed line, between	34° 10'.5 S	114° 36'.9 E
		34° 00'.0 S	114° 32'.6 E

Aus 756 [149/2018]

Insert	magenta dashed line, between	34° 10'.50 S	114° 36'.90 E
		34° 00'.00 S	114° 33'.00 E

Delete	magenta dashed line, between	34° 10'.5 S	114° 36'.9 E
		34° 00'.0 S	114° 32'.6 E

961 AUSTRALIA - WESTERN AUSTRALIA - Cassini Island - Depth northwestwards
 Geoscience Australia

Aus 319 [622/2018]

Insert	depth, 44m, enclosed by contour	13° 46'.21 S	124° 57'.58 E
--------	---------------------------------	--------------	---------------

Aus 4603 (INT 603) [56/2018]

Insert	depth, 44m	13° 46'.2 S	124° 57'.6 E
--------	------------	-------------	--------------

Delete	depth, 57m	13° 48'.2 S	125° 04'.9 E
--------	------------	-------------	--------------

Aus 4721 (INT 721) [959/2018]

Insert	depth, 44m	13° 46'.2 S	124° 57'.6 E
--------	------------	-------------	--------------

Aus 4722 (INT 722) [1020/2017]

Insert	depth, 44m	13° 46'.2 S	124° 57'.6 E
--------	------------	-------------	--------------

962 AUSTRALIA - WESTERN AUSTRALIA - Cockburn Sound - Careening Bay - Light buoy
 Fremantle Ports

Aus 111 [648/2017]

Insert	black yellow black pillar light buoy, Q, with north cardinal topmark	32° 14'.376 S	115° 42'.078 E
--------	--	---------------	----------------

Delete	light beacon	32° 14'.37 S	115° 42'.08 E
--------	--------------	--------------	---------------

Aus 117 [917/2018]

Replace	light beacon with black yellow black pillar light buoy, Q, with north cardinal topmark	32° 14'.38 S	115° 42'.08 E
---------	--	--------------	---------------

963 AUSTRALIA - WESTERN AUSTRALIA - Geraldton - Champion Bay - Nav aids

Mid West Ports

Aus 81 [200/2018]

Amend	light beacon to <i>Iso.3s & F.Bu</i>	28° 44'.76 S	114° 36'.54 E
	light buoy to <i>Fl(2)R.5s B</i>	28° 44'.06 S	114° 35'.67 E
	light buoy to <i>Fl(2)G.5s C</i>	28° 44'.69 S	114° 35'.67 E
	light buoy to <i>Fl(2)R.5s D</i>	28° 44'.66 S	114° 35'.81 E
	light buoy to <i>Fl(2)G.5s A</i>	28° 44'.09 S	114° 35'.52 E

Aus 332 [319/2018]

Amend	light to <i>Iso.3s & F.Bu</i>	28° 44'.8 S	114° 36'.5 E
-------	-----------------------------------	-------------	--------------

Aus 751 [319/2018]

Amend	light beacon to <i>Iso.3s & F.Bu</i>	28° 44'.8 S	114° 36'.5 E
-------	--	-------------	--------------

964 AUSTRALIA - WESTERN AUSTRALIA - Port Walcott - ZOC Diagram

Australian Hydrographic Office

Aus 327 [860/2018]

Insert	accompanying block	21° 08'.936 S	116° 36'.980 E
--------	--------------------	---------------	----------------

965 SOUTHERN OCEAN - Antarctica - Mawson - Depths

Royal Australian Navy

Aus 600 (INT 9036) [905/2017]

Insert	depth, 5_5m , and extend contour W to enclose	67° 35'.692 S	62° 51'.614 E
--------	---	---------------	---------------

Delete	depth, 7_8m	67° 35'.72 S	62° 51'.61 E
--------	---------------	--------------	--------------

Aus 600 (INT 9036) (Horseshoe Harbour) [905/2017]

Insert	depth, 13_3m , enclosed by contour	67° 35'.645 S	62° 51'.639 E
	depth, 5_5m , and extend contour W to enclose	67° 35'.692 S	62° 51'.614 E
	depth, 9_4m , and extend contour SW to enclose	67° 35'.728 S	62° 51'.581 E

Replace	depth, 16_8m , with depth, 12_5m , and extend contour W to enclose	67° 35'.85 S	62° 51'.83 E
---------	--	--------------	--------------

Delete	depth, 8_8m	67° 35'.69 S	62° 51'.63 E
	depth, 7_8m	67° 35'.72 S	62° 51'.61 E
	depth, 18_8m	67° 35'.73 S	62° 51'.58 E

966 AUSTRALIA - TASMANIA - Abeona Head - Rock

Australian Hydrographic Office

*On certain copies only***Aus 793 [413/2017]**

Insert	rock awash enclosed by danger circle, with legend <i>Rep (2017)</i>	43° 30'.25 S	146° 09'.33 E
--------	---	--------------	---------------

Aus 794 [413/2017]

Insert	rock awash enclosed by danger circle, with legend <i>Rep (2017)</i>	43° 30'.25 S	146° 09'.33 E
--------	---	--------------	---------------

967 AUSTRALIA - TASMANIA - Devonport - ZOC diagram

Australian Hydrographic Office

Aus 164 [867/2018]

Delete	magenta dashed line, between	41° 13'.81 S	146° 23'.16 E
		41° 13'.76 S	146° 23'.21 E
	magenta legend, B	41° 13'.85 S	146° 23'.20 E

968 AUSTRALIA - TASMANIA - Macquarie Harbour - Buoy removed

Marine and Safety Tasmania

Aus 177 [777/2018]

Delete buoy 42° 16'.9 S 145° 20'.2 E

969 SOLOMON ISLANDS - Choiseul Island - Vaghoe Point - Light range amended

Solomon Islands Maritime Safety Administration Notice 8/2018

Aus 4621 (INT 621) [952/2018]

Amend light range to 8/6M 7° 10'.2 S 156° 52'.0 E

Aus 4622 (INT 622) [912/2018]

Amend light range to 8/6M 7° 10'.2 S 156° 52'.0 E

Aus 4623 (INT 623) [NC 11/8/2017]

Amend light range to 8/6M 7° 10'.2 S 156° 52'.0 E

Aus 4634 (INT 634) [519/2018]

Amend light range to 8/6M 7° 10'.2 S 156° 52'.0 E

SLB 301 [249/2018]

Amend light range to 8/6M 7° 10'.2 S 156° 52'.0 E

SLB 302 [920/2018]

Amend light range to 8/6M 7° 10'.2 S 156° 52'.0 E

970(T)/2018 AUSTRALIA - NEW SOUTH WALES - Ballina - Light buoy off station eastwards

Manly Hydraulics Laboratory

The special spherical light buoy, *Fl(5)Y.20s* (28° 52'.18 S 153° 41'.65 E), is off station and currently in position 28° 58'.77 S 153° 40'.48 E.

Chart temporarily affected - Aus 813

971(T)/2018 AUSTRALIA - QUEENSLAND - Brisbane River - Hamilton Reach - Obstruction

Maritime Safety Queensland Notice 435(T)/2018

An obstruction with least depth 4.9m, exists in position 27° 26'.81 S 153° 04'.68 E.

Mariners are advised to navigate with caution in the area.

Chart temporarily affected - Aus 238

972(T)/2018 AUSTRALIA - QUEENSLAND - Freshwater Point to Slade Islet - Light buoys

Former Notice - 783(T)/2018 is cancelled

Maritime Safety Queensland Notice 429(T)/2018, 430(T)/2018

Light buoys, *Fl.Y.5s*, exist in the following positions:

21° 05'.54 S 149° 14'.49 E

21° 10'.35 S 149° 15'.68 E

21° 19'.05 S 149° 18'.74 E

21° 24'.90 S 149° 20'.12 E.

Chart temporarily affected - Aus 249 - Aus 250

973(T)/2018 AUSTRALIA - QUEENSLAND - Hay Point - Bed levelling operations

Former Notice - 729(T)/2018 is cancelled

Maritime Safety Queensland Notice 425(T)/2018

Vessel *Pacific Tiger* is conducting bed levelling operations in the DBCT berth pockets (21° 14'.96 S 149° 18'.32 E).

The vessel will display appropriate shapes and lights, and will monitor VHF Ch 10 and Ch 16.

Mariners are advised to navigate with caution in the area.

Chart temporarily affected - Aus 249 - Aus 250

974(T)/2018 AUSTRALIA - QUEENSLAND - Mooloolaba - Shoaling

Maritime Safety Queensland Notice 434(T)/2018

Shoaling with a least depth of 1.7m exists in position 26° 40'.76 S 153° 07'.92 E.

Mariners are advised to navigate with caution in the area.

Chart temporarily affected - Aus 235

975(T)/2018 AUSTRALIA - QUEENSLAND - Moreton Bay - Lamb Island - Light buoy; wreck

Maritime Safety Queensland Notice 410(T)/2018

A wreck marked by a special light buoy, *Fl.Y.2.5s*, exists in position 27° 37'.82 S 153° 22'.23 E.

Chart temporarily affected - Aus 236

976(T)/2018 AUSTRALIA - QUEENSLAND - North Stradbroke Island - Rocky Point - Artificial reef

Maritime Safety Queensland MSQ NTM 428(T)/2018

Vessel *Black Panther* and barge *PMG 183W* are conducting works to establish an artificial reef in the vicinity of position 27° 24'.17 S 153° 29'.69 E.

The barge has deployed four anchors. Vessels will display appropriate lights and shapes, and will monitor VHF Ch 16.

Mariners are advised to navigate with caution in the area.

Chart temporarily affected - Aus 236 - Aus 814

977(T)/2018 AUSTRALIA - QUEENSLAND - Rattlesnake Island - Live firing

Former Notice - 929(T)/2018 is cancelled

Maritime Safety Queensland Notice 432(T)/2018, 433(T)/2018

Live firing activities will be conducted within a 5M radius of position 19° 02'.45 S 146° 36'.72 E on 21 November and 27 November 2018.

Mariners are advised to navigate with caution in the area.

Chart temporarily affected - Aus 256 - Aus 827

978(T)/2018 AUSTRALIA - QUEENSLAND - Rosslyn Bay - Shoaling

Maritime Safety Queensland Notice 404(T)/2018

Shoaling, with least depth 1.7m, exists within the entrance channel and Rosslyn Bay boat harbour (23° 09'.52 S 150° 47'.27 E).

Mariners are advised to navigate with caution in the area.

Chart temporarily affected - Aus 247

979(T)/2018 AUSTRALIA - QUEENSLAND - Shoalwater Bay - Live firing completed

Former Notice - 879(T)/2018 is cancelled

Maritime Safety Queensland Notice 364(T)/2018

Cancel this notice on receipt.

Chart formerly affected - Aus 260 - Aus 261 - Aus 367 - Aus 822

980(P)/2018 AUSTRALIA - QUEENSLAND - Wide Bay - Shoaling

Former Notice - 473(P)/2017 is cancelled

Maritime Safety Queensland Notice 164/2017

Shoaling exists in the entrance to Wide Bay Harbour (25° 47'.3 S 153° 06'.6 E).

Charts will be updated in due course.

Chart which will be affected - Aus 240 - Aus 815 - Aus 817

981(T)/2018 PAPUA NEW GUINEA - Cap Ward Hunt to Cape Cretin - Seismic survey completed

Former Notice - 935(T)/2018 is cancelled

Australian Maritime Safety Authority

Cancel this notice on receipt.

Chart formerly affected - Aus 386 - Aus 520 - Aus 521 - Aus 522 - Aus 523 - Aus 4620 (INT 620) - Aus 4621 (INT 621) - Aus 4622 (INT 622)

982(T)/2018 PAPUA NEW GUINEA - Isulailai Point - Light beacon relit*Former Notice* - 881(T)/2018 is cancelled

National Maritime Safety Authority PNG Warning 17/2018

Cancel this notice on receipt.

Chart formerly affected - Aus 508 - Aus 625**983(T)/2018 PAPUA NEW GUINEA - Karkar Island - Shoaling**

Fugro

Latest survey shows shoaler depths than those charted may exist in an area bounded by the coast and the following positions:

4° 31'.44 S 146° 00'.06 E

4° 30'.68 S 146° 00'.36 E

4° 31'.14 S 146° 03'.42 E

4° 34'.41 S 146° 05'.09 E

4° 38'.10 S 146° 05'.33 E

4° 38'.04 S 146° 03'.60 E.

Mariners are advised to navigate with caution in the area.

Charts will be updated in due course.

Chart temporarily affected - Aus 387 - Aus 388**984(T)/2018 PAPUA NEW GUINEA - Selapiu Island - Steffan Strait - Light unlit**

National Maritime Safety Authority PNG Warning 18/2018

The light, *Fl(2)8s 13m 10M* (2° 42'.53 S 150° 36'.86 E), is unlit.**Chart temporarily affected - Aus 392 - Aus 393 - Aus 543 - Aus 666 - Aus 4622 (INT 622)****985(T)/2018 PAPUA NEW GUINEA - Unei Island - Light unlit**

National Maritime Safety Authority PNG Warning 18/2018

The light, *Fl(4)16s 6m 9M* (3° 22'.69 S 143° 24'.58 E), is unlit.**Chart temporarily affected - Aus 389 - Aus 651 - Aus 4622 (INT 622)****986(T)/2018 AUSTRALIA - NORTHERN TERRITORY - Bathurst Island - Survey and drilling operations completed***Former Notice* - 414(T)/2018 is cancelled

ConocoPhillips Australia

Cancel this notice on receipt.

Chart formerly affected - Aus 22 - Aus 309 - Aus 310 - Aus 722**987(T)/2018 TIMOR-LESTE - Dili - Light unlit**HMAS *Paluma*The light, *Fl.R.4s* (8° 33'.20 S 125° 34'.70 E), is unlit.**Chart temporarily affected - Aus 901**

988(T)/2018 AUSTRALIA - WESTERN AUSTRALIA - Bedout Island - Scientific instruments northwestwards
Former Notice - 881(T)/2017 is cancelled
 RPS MetOcean

Scientific instruments exist as follows:

<i>Position</i>	<i>Remarks</i>
18° 41'.37 S 118° 44'.51 E	6m below surface
18° 50'.39 S 118° 51'.89 E	special pillar light buoy, Q(5)Y.20s
18° 50'.40 S 118° 51'.50 E	6m below surface
18° 50'.66 S 118° 51'.78 E	6m below surface
18° 50'.78 S 118° 51'.50 E	special spherical light buoy, Q(5)Y.20s
19° 02'.03 S 118° 43'.74 E	81m below surface
19° 14'.74 S 118° 43'.15 E	71m below surface
19° 31'.14 S 118° 43'.80 E	31m below surface

Chart temporarily affected - Aus 325 - Aus 326 - Aus 739

989(T)/2018 AUSTRALIA - WESTERN AUSTRALIA - Dampier - Intercourse Island - Wreck
 Pilbara Ports Authority Notice D11/2018

A stranded wreck exists in position 20° 39'.60 S 116° 37'.83 E.

Chart temporarily affected - Aus 57

990(T)/2018 AUSTRALIA - WESTERN AUSTRALIA - Mandurah Estuary - Shoaling; dredging operations
Former Notice - 744(T)/2018 is cancelled
 Department of Transport WA Notice 108/2018, 147/2018, 148/2018

Due to shoaling, the dredge *Swan V* is conducting dredging operations in the entrance to Mandurah Ocean Marina (32° 31'.53 S 115° 42'.74 E) and in the vicinity of position 32° 31'.86 S 115° 42'.87 E.

A 50m floating pipeline, marked by special light buoys, exists from the dredge. The dredge will display appropriate lights and shapes.

The dredge will monitor VHF Ch 12 and Marine 27 MHz Ch 90, and mariners must make contact prior to navigating past the dredge.

Mariners are advised to navigate with caution in the area.

Chart temporarily affected - Aus 116

991(T)/2018 AUSTRALIA - WESTERN AUSTRALIA - Montebello Islands - Ah Chong Island - Light unreliable
 Quadrant Energy

The light, *Mo(U)Y.15s* (20° 32'.86 S 115° 36'.27 E), is unreliable.

Chart temporarily affected - Aus 327 - Aus 742

992(T)/2018 AUSTRALIA - WESTERN AUSTRALIA - Montebello Islands - Environmental monitoring northwards
 Chevron Australia

A vessel, ROV and an AUV are conducting environmental monitoring within a 2.7M radius of position 19° 55'.78 S 115° 23'.03 E.

Chart temporarily affected - Aus 327 - Aus 328

993(T)/2018 AUSTRALIA - WESTERN AUSTRALIA - Muiron Islands - Oil field to be decommissioned northwestwards
 Woodside Energy Ltd

Vessel *Skandi Hercules* and support vessels are conducting works associated with the decommissioning of the Enfield field (21° 29'.0 S 114° 00'.0 E), which includes the disconnection of the *Nganhurra* FPSO.

Chart temporarily affected - Aus 328 - Aus 329 - Aus 744 - Aus 4723 (INT 723) - Aus 4725 (INT 725)

994(T)/2018 AUSTRALIA - WESTERN AUSTRALIA - North West Cape - Drill rig northwestwards moved
Former Notice - 941(T)/2018 is cancelled
 MODU ENSCO 107

Cancel this notice on receipt.

Chart formerly affected - Aus 328 - Aus 4723 (INT 723) - Aus 4725 (INT 725)

995(T)/2018 AUSTRALIA - WESTERN AUSTRALIA - Port Geographe Marina - Dredging operations
 Department of Transport WA Notice 144/2018

The dredge *Mudlark I* is conducting dredging operations at the entrance to the marina (33° 37'.74 S 115° 23'.38 E).

A floating pipeline marked by special light buoys exists from the dredge.

The dredge will display appropriate lights and shapes and will monitor VHF Ch 16 and Marine 27 MHz Ch 90.

Mariners are requested to make contact before navigating past the dredge and advised to navigate with caution in the area.

Chart temporarily affected - Aus 116

996(T)/2018 AUSTRALIA - TASMANIA - Crayfish Point - Buoys
 Marine and Safety Tasmania Notice M175/2018

Unlit buoys exist between positions 42° 57'.00 S 147° 21'.36 E and 42° 57'.00 S 147° 21'.62 E.

Chart temporarily affected - Aus 171

997(T)/2018 AUSTRALIA - TASMANIA - Macquarie Harbour - Scientific instrument
 CSIRO

A special light buoy exists in position 42° 14'.53 S 145° 19'.46 E.

Chart temporarily affected - Aus 177

998(T)/2018 AUSTRALIA - TASMANIA - Macquarie Harbour - Marine farm works completed
Former Notice - 228(T)/2018 is cancelled
 Marine and Safety Tasmania Notice 44/2018, 47/2018

Cancel this notice on receipt.

Chart formerly affected - Aus 177

999(T)/2018 SOLOMON ISLANDS - Vaghoe Point - Light relit
Former Notice - 684(T)/2017 is cancelled
 Solomon Islands Maritime Safety Administration Notice 8/2018

Cancel this notice on receipt.

Chart formerly affected - Aus 4604 (INT 604) - Aus 4621 (INT 621) - Aus 4622 (INT 622) - Aus 4623 (INT 623) - Aus 4634 (INT 634) - SLB 301 - SLB 302

II

HYDROGRAPHIC REPORTS

NIL

III

NAVIGATION WARNINGS

The Australian Hydrographic Office will no longer compile Section III of the Australian Notices to Mariners. For the most up to date navigation warnings please refer to:

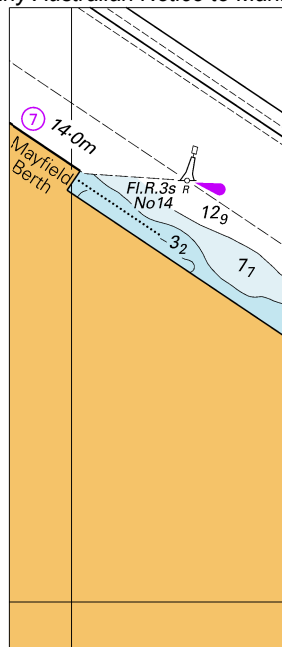
AMSA Navigation Warnings

<http://amsa.gov.au/search-and-rescue/distress-and-safety-comms/msi/msi-email/index.asp>

New Zealand Notices to Mariners (Navarea XIV warnings)

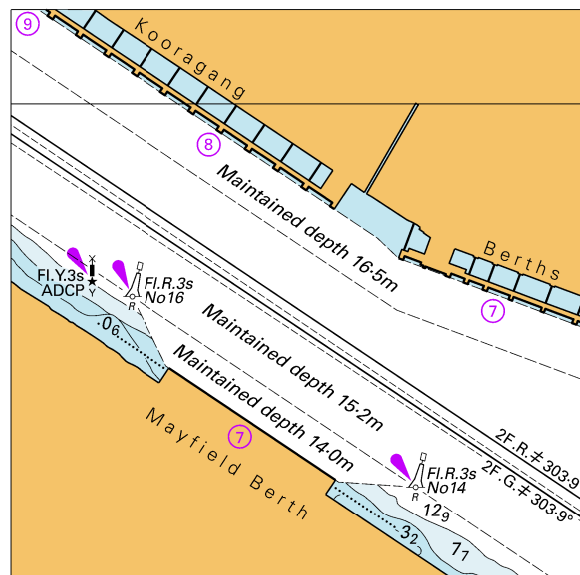
<http://www.linz.govt.nz/sea/maritime-safety/notices-mariners>

To accompany Australian Notice to Mariners 946/2018



© Commonwealth of Australia 2018
Block A for Chart Aus 208 (37.0 x 84.9mm)

To accompany Australian Notice to Mariners 946/2018

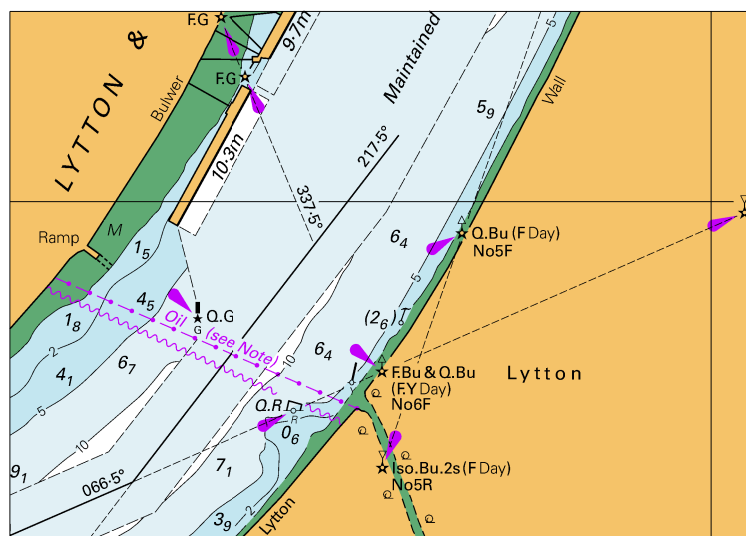


© Commonwealth of Australia 2018

Block B for Chart Aus 208

(76.4 x 75.5mm)

To accompany Australian Notice to Mariners 949/2018

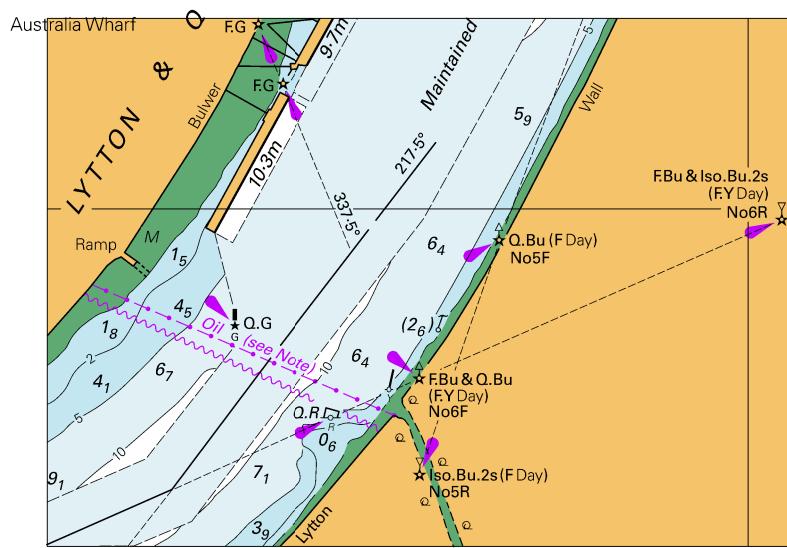


© Commonwealth of Australia 2018

Block for Chart Aus 237

(98.8 x 69.7mm)

To accompany Australian Notice to Mariners 949/2018



© Commonwealth of Australia 2018

Block for Chart Aus 238

(98.8 x 69.7mm)

To accompany Australian Notice to Mariners 950/2018

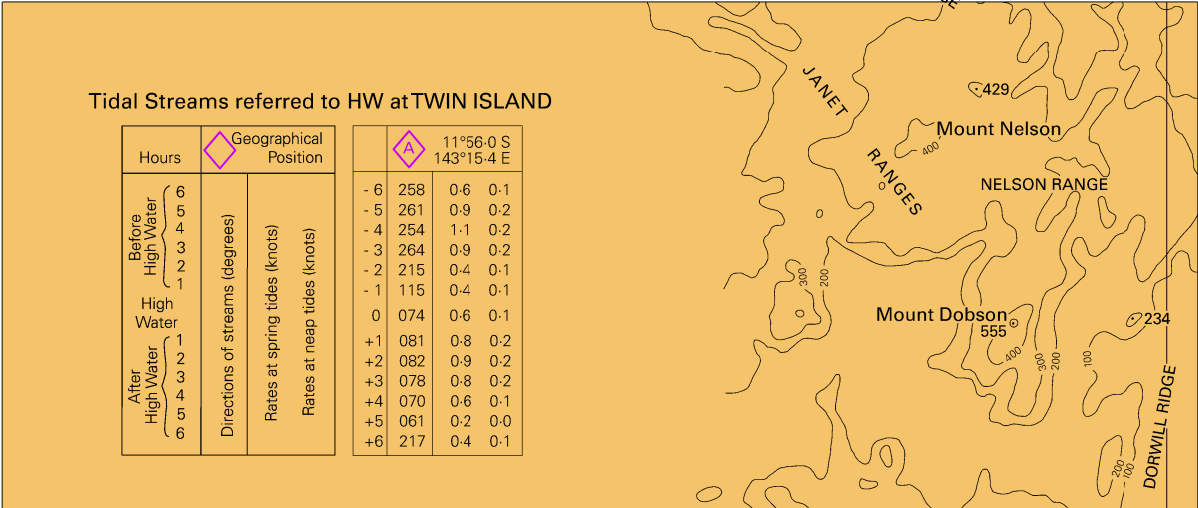
Tidal Streams referred to HW at LEGGATT ISLAND						
Hours		Geographical Position		14°29.5 S 144°56.7 E		
Before High Water	6	Directions of streams (degrees)	Rates at spring tides (knots)	- 6	303	0.1 0.0
	5			- 5	258	0.2 0.0
	4			- 4	252	0.3 0.0
	3			- 3	271	0.3 0.0
	2			- 2	317	0.3 0.0
	1			- 1	300	0.4 0.0
	0			0	090	0.1 0.0
After High Water	1	Directions of streams (degrees)	Rates at spring tides (knots)	+ 1	113	0.3 0.0
	2			+ 2	127	0.4 0.0
	3			+ 3	110	0.3 0.0
	4			+ 4	070	0.1 0.0
	5			+ 5	040	0.1 0.0
	6			+ 6	258	0.1 0.0

© Commonwealth of Australia 2018

Block for Chart Aus 832

(67.3 x 58.6mm)

To accompany Australian Notice to Mariners 950/2018



CORAL AND SOLOMAN SEA

MACKAY

TO

SOLOMON ISLANDS

SCALE 1 : 1 500 000 at lat 23°00'

Depths are in metres.**Heights** are in metres above Mean Higher High Water.**Projection:** Mercator.**SATELLITE DERIVED POSITIONS**

Positions obtained from the Global Positioning System (GPS) in the WGS 1984 Datum can be plotted directly onto this chart.

COASTAL NAVIGATION

This chart has been produced for route planning and ocean transit purposes. Certain lights and other aids to navigation have been omitted. For coastal navigation the largest scale Australian navigation charts must be used.

CURRENTS

For information on ocean currents in the area of this chart, see Admiralty Sailing Directions and Ocean Passages For The World.

REEFREP MANDATORY SHIP REPORTING SYSTEM (SRS)

The ship reporting system area encloses Torres Strait and the Great Barrier Reef. For details and categories of ships required to participate see Australian Seafarers Handbook AHP 20, Australia Pilot Volume III, NP 15 and Admiralty List of Radio Signals Volume 6(4).

When reporting within the REEFREP area, vessels are to call 'REEFVTS' on VHF channels 11 or 14 depending on the ship's position. INMARSAT-C should be used for communicating with REEFVTS when VHF communications are limited.

REEFVTS VHS Contact Channels

AREA	VHF Ch
Inner Route 18°00'S to 20°00'S	14
Inner Route 20°00'S to 22°00'S	11
20°00'S to Sandy Cape	14

MAGNETIC VARIATION CURVES ARE FOR 2017

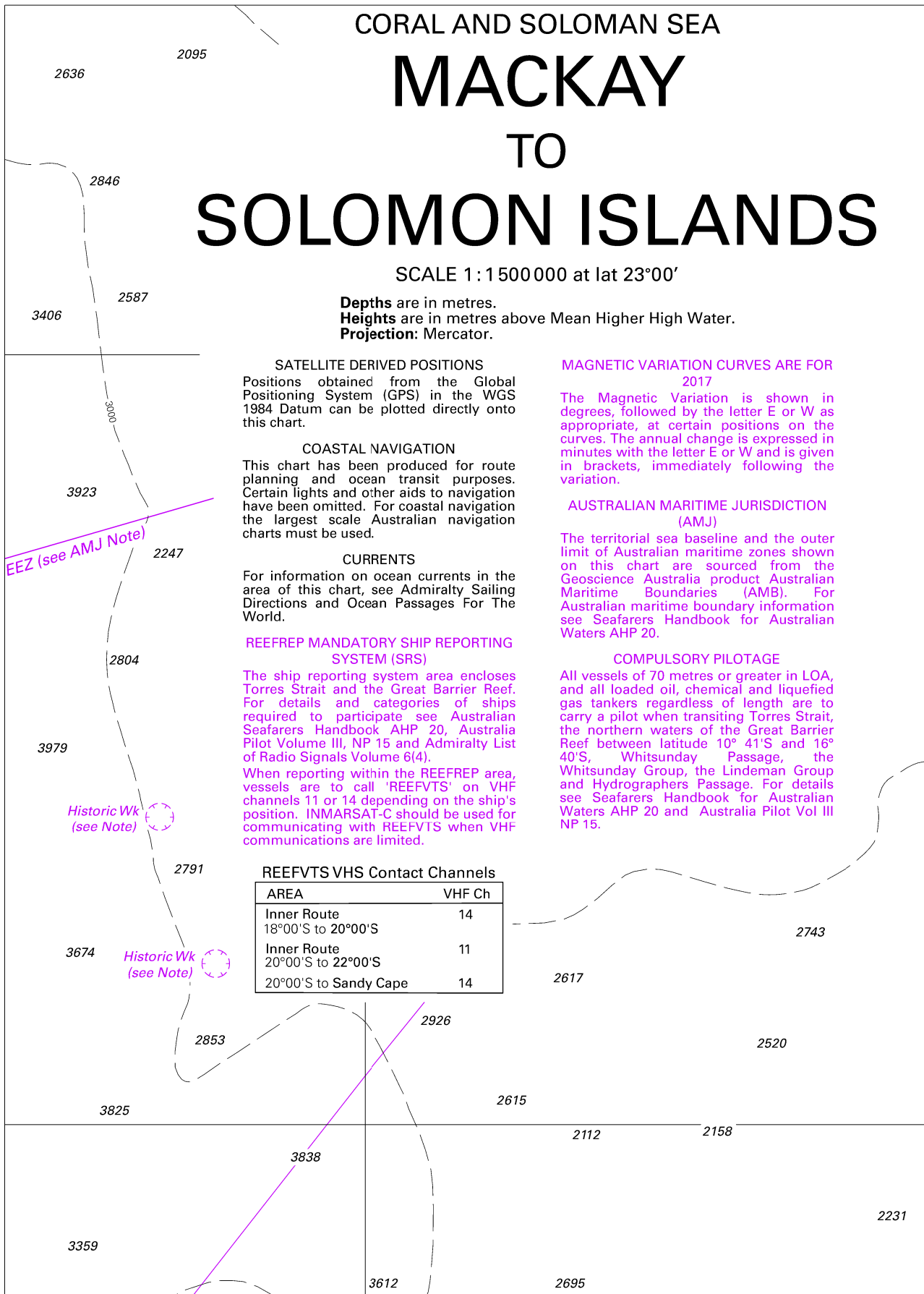
The Magnetic Variation is shown in degrees, followed by the letter E or W as appropriate, at certain positions on the curves. The annual change is expressed in minutes with the letter E or W and is given in brackets, immediately following the variation.

AUSTRALIAN MARITIME JURISDICTION (AMJ)

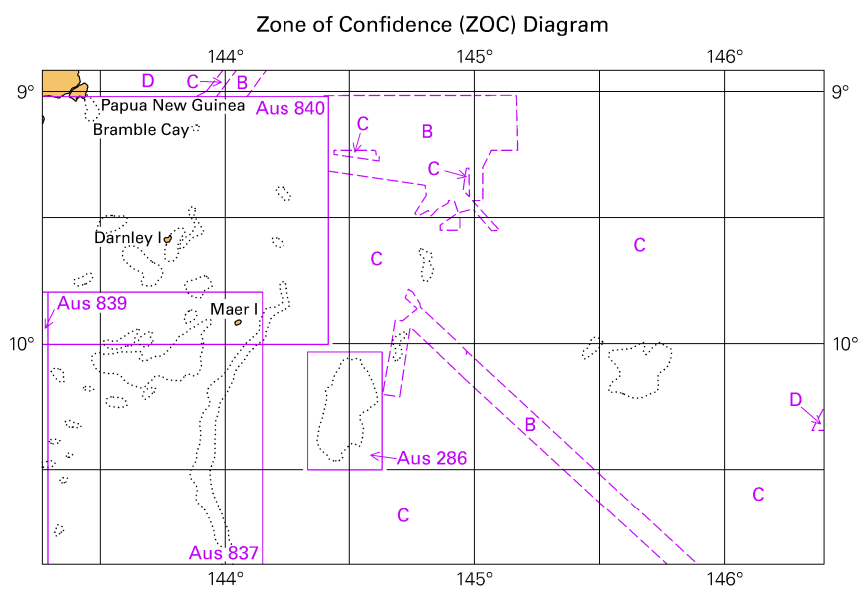
The territorial sea baseline and the outer limit of Australian maritime zones shown on this chart are sourced from the Geoscience Australia product Australian Maritime Boundaries (AMB). For Australian maritime boundary information see Seafarers Handbook for Australian Waters AHP 20.

COMPULSORY PILOTAGE

All vessels of 70 metres or greater in LOA, and all loaded oil, chemical and liquefied gas tankers regardless of length are to carry a pilot when transiting Torres Strait, the northern waters of the Great Barrier Reef between latitude 10° 41'S and 16° 40'S, Whitsunday Passage, the Whitsunday Group, the Lindeman Group and Hydrographers Passage. For details see Seafarers Handbook for Australian Waters AHP 20 and Australia Pilot Vol III NP 15.



To accompany Australian Notice to Mariners 957/2018

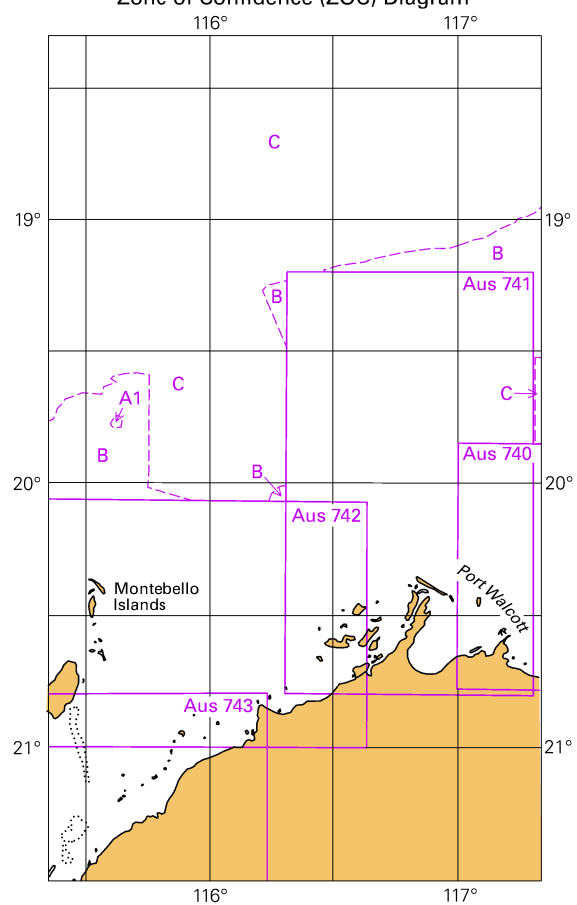


© Commonwealth of Australia 2018

Block for Chart Aus 377

(103.3 x 65.3mm)

To accompany Australian Notice to Mariners 964/2018
Zone of Confidence (ZOC) Diagram



© Commonwealth of Australia 2018

Block for Chart Aus 327

(65.2 x 111.7mm)