



21 September 2018

Edition 19

# AUSTRALIAN NOTICES TO MARINERS

**Notices 802 - 848**

Published fortnightly by the Australian Hydrographic Office



Australian Notices to Mariners are the authority for correcting charts and publications published by the Australian Hydrographic Office covering Australia, Papua New Guinea, Solomon Islands, Australian Antarctic Territory and Timor-Leste.

Commodore F.T. FREEMAN RAN  
*Hydrographer of Australia*

---

## SECTIONS.

- I. **Australian Notices to Mariners, including blocks and notes.**
- II. **Hydrographic Reports.**
- III. **Navigational Warnings.**

## SUPPLEMENTS.

- I. **Tracings**
- II. **Cumulative List of Australian Notices to Mariners.**
- III. **Cumulative List of Temporary and Preliminary Australian Notices to Mariners.**
- IV. **Temporary and Preliminary Notices in force.**
- V. **Amendments to Admiralty List of Lights and Fog Signals (Vol K), Radio Signals (NP 281(2), 282, 283(2), 285, 286(4)) and Sailing Directions (NP 9, 13, 14, 15, 33, 34, 35, 36, 39, 44, 51, 60, 61, 62, 100, 136).**

---

© Commonwealth of Australia 2018

This work is copyright. Apart from any use permitted under the Copyright Act 1968, no part may be reproduced by any process, adapted, communicated or commercially exploited without prior written permission from The Commonwealth represented by the Australian Hydrographic Office.

## IMPORTANT NOTICE

This edition of Notices to Mariners includes all significant information affecting AHO products which the AHO has become aware of since the last edition. All reasonable efforts have been made to ensure the accuracy and completeness of the information, including third party information, on which these updates are based. The AHO regards third parties from which it receives information as reliable, however the AHO cannot verify all such information and errors may therefore exist. The AHO does not accept liability for errors in third party information.

---

## GENERAL INSTRUCTIONS

The substance of these notices should be inserted on the charts affected.

Bearings are referred to the true compass and are reckoned clockwise from North; those relating to lights are given as seen by an observer from seaward.

Positions quoted in notices relate to WGS84 which is the horizontal datum for all charts produced by the Australian Hydrographic Office.

The range quoted for a light is its nominal range.

Depths are with reference to the chart datum of each chart. Heights are above mean high water springs or mean higher high water, as appropriate.

The capital letter (P) or (T) after the number of any notice denotes a preliminary or temporary notice respectively, which are contained separately at the end of the permanent notices.

---

## REPORTING OF DANGERS

Mariners are particularly requested to notify the AUSTRALIAN HYDROGRAPHIC OFFICE, Locked Bag 8801 Wollongong, NSW 2500 (Fax 02-4223 6599, e-mail [datacentre@hydro.gov.au](mailto:datacentre@hydro.gov.au) or, alternatively by filling in and submitting the [Hydrographic Notes](#) forms located on the web site – [www.hydro.gov.au](http://www.hydro.gov.au)), immediately on the discovery of new dangers or suspected dangers to navigation. For changes or defects in aids to navigation notify AusSAR (Fax 02-6230 6868 or email [rccaus@amsa.gov.au](mailto:rccaus@amsa.gov.au)).

---

## AUTHORISED USE

Copies of Australian notices are available free of charge from the Australian Hydrographic Office (AHO) website ([www.hydro.gov.au](http://www.hydro.gov.au)) and through the eNotices (email) service ([www.hydro.gov.au/enotices/enotices.htm](http://www.hydro.gov.au/enotices/enotices.htm)).

Individual Notices may be copied for the purpose of inserting Notice substance on official charts and publications. Paper copies may be printed by chart agents and distributed to customers on a cost recovery basis. Participating chart agents are listed on the AHO website as providing a 'Paper Notices to Mariners' service ([www.hydro.gov.au/webapps/jsp/agents/agents-list.jsp](http://www.hydro.gov.au/webapps/jsp/agents/agents-list.jsp)). Copies of the notices may not be sold for profit without prior written agreement.

## NUMERICAL INDEX OF NOTICES TO MARINERS

### Edition No 19

Notices	Aus Chart, INT Chart, ENC Cell, AHP, BA Pubs
802	Aus 812
803	Aus 203
804	Summer time
805	Aus 197, 198, 200, 808, 809
806	Aus 207, 208, 809
807	Aus 811
808	Aus 238
809	Aus 237
810	Aus 249, 823, 824
811	Aus 236
812	Aus 258
813	Aus 680
814	Aus 842
815	Aus 73
816	Aus 32
817	Aus 485, 776, 777
818	Aus 135, 778
819	Aus 182
820	Aus 143, 157
821	Aus 143, 157
822	Aus 154
823	Aus 164
824	Aus 167, 799
825	SLB 103, 201
826	SLB 101
827(T)	Aus 264
828(T)	Aus 256, 827
829(T)	Aus 270
830(T)	Aus 235, 236
831(T)	Aus 240
832(T)	Aus 235
833(T)	Aus 235
834(T)	Aus 236
835(T)	Aus 236
836(T)	Aus 397, 399, 684, 4060, 4604, 4622, INT 60, 604, 622
837(T)	Aus 316, 724
838(T)	Aus 312, 4721, INT 721
839(T)	Aus 754
840(T)	Aus 112, 754, 4725, INT 725
841(T)	Aus 116, 755
842(T)	Aus 69
843(T)	Aus 112, 754
844(T)	Aus 141, 349
845(T)	Aus 163
846(T)	Aus 4604, 4623, 4634, INT 604, 623, 634, SLB 302
847(T)	SLB 102, 301, 302
848(T)	Aus 4623, 4634, INT 623, 634, SLB 101, 201, 304, 305

## NUMERICAL INDEX OF CHARTS AFFECTED

### Edition No 19

Aus Chart	Notices
Aus 32	816
Aus 69	842(T)
Aus 73	815
Aus 112	840(T), 843(T)
Aus 116	841(T)
Aus 135	818
Aus 141	844(T)
Aus 143	820, 821
Aus 154	822
Aus 157	820, 821
Aus 163	845(T)
Aus 164	823
Aus 167	824
Aus 182	819
Aus 197	805
Aus 198	805
Aus 200	805
Aus 203	803
Aus 207	806
Aus 208	806
Aus 235	830(T), 832(T), 833(T)
Aus 236	811, 830(T), 834(T), 835(T)
Aus 237	809
Aus 238	808
Aus 240	831(T)
Aus 249	810
Aus 256	828(T)
Aus 258	812
Aus 264	827(T)
Aus 270	829(T)
Aus 312	838(T)
Aus 316	837(T)
Aus 349	844(T)
Aus 397	836(T)
Aus 399	836(T)
Aus 485	817
Aus 680	813
Aus 684	836(T)
Aus 724	837(T)
Aus 754	839(T), 840(T), 843(T)
Aus 755	841(T)
Aus 776	817
Aus 777	817
Aus 778	818
Aus 799	824
Aus 808	805
Aus 809	805, 806
Aus 811	807
Aus 812	802
Aus 823	810
Aus 824	810
Aus 827	828(T)
Aus 842	814
Aus 4060	836(T)

Aus Chart	Notices
Aus 4604	836(T), 846(T)
Aus 4622	836(T)
Aus 4623	846(T), 848(T)
Aus 4634	846(T), 848(T)
Aus 4721	838(T)
Aus 4725	840(T)
SLB 101	826, 848(T)
SLB 102	847(T)
SLB 103	825
SLB 201	825, 848(T)
SLB 301	847(T)
SLB 302	846(T), 847(T)
SLB 304	848(T)
SLB 305	848(T)

INT Chart	Notices
INT 60	836(T)
INT 604	836(T), 846(T)
INT 622	836(T)
INT 623	846(T), 848(T)
INT 634	846(T), 848(T)
INT 721	838(T)
INT 725	840(T)

**802 AUSTRALIA - Products - New Charts, New Editions, Withdrawn Charts**

Australian Hydrographic Office

**New Charts**

<i>Chart</i>	<i>Title and Geographical limits</i>	<i>Scale</i>	<i>Publication Date</i>	<i>Remarks</i>
NIL				

**New Electronic Navigation Chart (Aus ENC)**

<i>Cell Name</i>	<i>Title</i>	<i>Publication Date</i>	<i>Remarks</i>
NIL			

**New Editions and Withdrawn Charts**

<i>Chart</i>	<i>Title</i>	<i>Scale</i>	<i>Publication Date</i>	<i>Remarks</i>
AUS 812 <b>Edition 2</b>	Australia - East Coast - New South Wales - Nambucca Heads to Clarence River	1:150 000	21 September 2018	New edition with general updating throughout; including latest bathymetric data. <b>Chart Aus 812 Edition 1 dated 10 April 2009 is now superseded and must be withdrawn from use.</b>

**Australian National Tide Tables 2019**

<i>AHP No</i>	<i>Title</i>	<i>Recommended retail price (incl GST)</i>	<i>Remarks</i>
AHP11	Australian National Tides Tables 2019	\$64.90	Paper Australian National Tides Tables 2019 for Australia, Antarctica, Papua New Guinea, Solomon Islands and Timor-Leste. Provides tidal information for 2019. Available from accredited chart distribution agents.

**Chart permanently withdrawn**

Charts listed above as withdrawn no longer meet chart carriage requirements and should be marked as "superseded" and replaced with the new chart/ new edition listed prior to passage through the area covered by the new chart.

When placing orders with a chart agent between notice of forthcoming edition and its publication, mariners should advise whether their order pertains to the current edition or the new edition.

For further details refer to the AHO website at [www.hydro.gov.au](http://www.hydro.gov.au) for new edition and new chart stock arrival information.

**803 AUSTRALIA - Products - New Charts and New Editions to be published shortly**

Australian Hydrographic Service

**New Charts to be published shortly**

<i>Chart</i>	<i>Title</i>	<i>Scale</i>	<i>Expected Publication Date</i>	<i>Remarks</i>
NIL				

**New Editions to be published shortly**

<i>Chart</i>	<i>Title</i>	<i>Scale</i>	<i>Expected Publication Date</i>	<i>Remarks</i>
AUS 203	Australia - East Coast - New South Wales - Port Jackson (Western Sheet) Parramatta and Lane Cove Rivers Inset: Parramatta River	1:10 000	5 October 2018	New edition with general updating throughout; including latest bathymetric data.
		1:10 000		

**804 AUSTRALIA - Summer time**

Australian Government

Clocks will be wound forward one hour at 0200 local time on 7 OCT 2018 in the Australian Capital Territory, New South Wales, South Australia, Victoria and Tasmania.

No changes will be made in Queensland, Northern Territory and Western Australia.



**806 AUSTRALIA - NEW SOUTH WALES - Newcastle - Nav aids; pilot boarding place**

Port of Newcastle , NSW Roads and Maritime Services , Port Authority of New South Wales , UKHO

**Aus 207 [765/2018]**

Insert	south cardinal cylindrical buoy, with topmark	32° 51'.688 S	151° 46'.865 E
	east cardinal beacon, with topmark	32° 51'.548 S	151° 46'.930 E
	precautionary area, radius 500m, centred on	32° 56'.00 S	151° 52'.65 E

Delete	buoy	32° 51'.60 S	151° 46'.84 E
	buoy	32° 51'.53 S	151° 46'.96 E
	topmark	32° 52'.07 S	151° 46'.85 E
	topmark	32° 51'.41 S	151° 46'.67 E
	topmark	32° 51'.15 S	151° 44'.85 E
	topmark	32° 50'.95 S	151° 44'.31 E

**Aus 208 [764/2018]**

Insert	starboard lateral beacon, with topmark	32° 53'.970 S	151° 47'.135 E
	port lateral beacon, with topmark	32° 53'.960 S	151° 47'.148 E
	west cardinal beacon, with topmark	32° 53'.677 S	151° 47'.289 E
	west cardinal beacon, with topmark	32° 53'.564 S	151° 47'.340 E
	starboard lateral conical light buoy, <i>Fl. G.3s No3</i> , without topmark	32° 52'.823 S	151° 47'.092 E
	starboard lateral conical light buoy, <i>Fl. G.3s No2</i> , without topmark	32° 52'.958 S	151° 47'.182 E

Delete	beacon	32° 53'.96 S	151° 47'.14 E
	depth, 2 <sub>3</sub> m	32° 53'.96 S	151° 47'.15 E
	light buoy	32° 52'.87 S	151° 47'.08 E
	light buoy	32° 52'.96 S	151° 47'.19 E

**Aus 809 [805/2018]**

Insert	pilot boarding place with magenta legend, <i>Charlie</i>	32° 56'.00 S	151° 52'.65 E
	precautionary area, radius 0.27M, centred on	32° 56'.00 S	151° 52'.65 E

**807 AUSTRALIA - NEW SOUTH WALES - Perpendicular Point - ESSA limit; light buoy**

Department of the Environment and Energy , Parks Australia

**Aus 811 [592/2017]**

Insert	accompanying block	31° 42'.81 S	152° 56'.61 E
--------	--------------------	--------------	---------------

**808 AUSTRALIA - QUEENSLAND - Brisbane River - Pinkenba Reach - Light beacon**

Maritime Safety Queensland

**Aus 238 [767/2018]**

Replace	light buoy with light beacon, <i>Fl. G.3s</i> , with starboard lateral topmark	27° 25'.66 S	153° 07'.79 E
---------	--	--------------	---------------

**809 AUSTRALIA - QUEENSLAND - Brisbane River - Pelican Banks Reach - Light beacon moved***Former Notice - 26(T)/2018 is cancelled*

Maritime Safety Queensland Notice 188/2018

**Aus 237 [767/2018]**

Move	light beacon	27° 23'.96 S	153° 09'.29 E
	to	27° 23'.984 S	153° 09'.282 E

Delete	depth, 4 <sub>8</sub> m	27° 23'.98 S	153° 09'.27 E
--------	-------------------------	--------------	---------------



**810 AUSTRALIA - QUEENSLAND - Hay Point to Mackay - VTS limit**

Australian Maritime Safety Authority

**Aus 249 [554/2018]**

Insert	magenta dashed line, between	21° 01'.85 S	149° 50'.00 E
		21° 06'.58 S	149° 56'.00 E
		21° 20'.00 S	149° 56'.00 E
		21° 20'.98 S	149° 18'.53 E
		21° 20'.89 S	149° 21'.04 E
	magenta legend, <i>Hay Point VTS (see Note)</i> , centred on	21° 20'.34 S	149° 41'.48 E
	magenta legend, <i>Hay Point VTS (see Note)</i> , centred on	21° 16'.95 S	149° 55'.92 E
	magenta legend, <i>Hay Point VTS (see Note)</i> , centred on		
Delete	magenta dashed line with legends, Hay Point VTS (see Note), between	21° 01'.8 S	149° 50'.0 E
		21° 06'.6 S	149° 55'.0 E
		21° 20'.0 S	149° 55'.0 E
		21° 20'.0 S	149° 17'.9 E

**Aus 823 [554/2018]**

Insert	magenta dashed line, with magenta legends, <i>Hay Point VTS (see Note)</i> , between	21° 01'.85 S	149° 50'.00 E
		21° 06'.58 S	149° 56'.00 E
		21° 20'.00 S	149° 56'.00 E
		21° 20'.98 S	149° 18'.53 E
Delete	magenta dashed line with legends, Hay Point VTS (see Note), between	21° 01'.8 S	149° 50'.0 E
		21° 06'.6 S	149° 55'.0 E
		21° 20'.0 S	149° 55'.0 E
		21° 20'.0 S	149° 17'.9 E

**Aus 824 [554/2018]**

Insert	magenta dashed line, between	21° 01'.85 S	149° 50'.00 E
		21° 05'.30 S	149° 54'.37 E
Delete	magenta dashed line with legends, Hay Point VTS (see Note), between	21° 01'.8 S	149° 50'.0 E
		21° 05'.3 S	149° 53'.6 E

**811 AUSTRALIA - QUEENSLAND - Moreton Bay - Manly Boat Harbour - Light beacon withdrawn**

Maritime Safety Queensland Notice 365/2018

**Aus 236 (Manly Boat Harbour) [613/2018]**

Delete	light beacon	27° 27'.13 S	153° 11'.49 E
--------	--------------	--------------	---------------

**812 AUSTRALIA - QUEENSLAND - Mourilyan Harbour - Depths**

Maritime Safety Queensland

**Aus 258 (Mourilyan Harbour) [478/2018]**

Insert	accompanying block	17° 36'.10 S	146° 07'.36 E
--------	--------------------	--------------	---------------

**813 PAPUA NEW GUINEA - Simpson Harbour - Rabaul - Infrastructure**

LADS Flight

**Aus 680 (Simpson and Matupit Harbours) [134/2017]**

Insert	accompanying block	4° 12'.2 S	152° 10'.0 E
--------	--------------------	------------	--------------

**814 AUSTRALIA - TORRES STRAIT - Cook Reef - Depths northeastwards**HMAS *Mermaid* and HMAS *Paluma***Aus 842 [90/2017]**

Insert	accompanying block A	10° 08'.0 S	141° 44'.0 E
	accompanying block B	9° 06'.0 S	141° 12'.0 E

**815 AUSTRALIA - WESTERN AUSTRALIA - Carnarvon - Teggs Channel - Light beacon withdrawn**

Department of Transport WA Notice 120/2018

**Aus 73 (Carnarvon) [719/2018]**

Delete	light beacon	24° 54'.43 S	113° 38'.12 E
--------	--------------	--------------	---------------

**816 AUSTRALIA - WESTERN AUSTRALIA - Wyndham - Nomenclature**

CGL Wyndham Port

**Aus 32 (Approaches to Wyndham Wharf) [620/2018]**

Delete	legend, Secondary Channel	15° 20'.06 S	128° 06'.78 E
--------	---------------------------	--------------	---------------

**817 AUSTRALIA - SOUTH AUSTRALIA - Port Victoria - Wrecks**

Australian Hydrographic Office , HydroSurvey Australia

**Aus 485 [773/2018]**

Delete	light, Fl.WR.9/7M	34° 29'.7 S	137° 28'.8 E
--------	-------------------	-------------	--------------

**Aus 776 [102/2018]**

Insert	accompanying block	34° 30'.0 S	137° 24'.5 E
--------	--------------------	-------------	--------------

**Aus 777 [397/2018]**

Insert	accompanying block	34° 26'.31 S	137° 22'.59 E
--------	--------------------	--------------	---------------

**818 AUSTRALIA - SOUTH AUSTRALIA - Whyalla - Pilot boarding place**

UKHO

**Aus 135 (Whyalla) [NE 13/7/2018]**

Move	pilot boarding place	33° 03'.45 S	137° 39'.01 E
	to	33° 03'.80 S	137° 38'.80 E

**Aus 778 [773/2018]**

Move	pilot boarding place	33° 03'.45 S	137° 39'.01 E
	to	33° 03'.80 S	137° 38'.80 E

Delete	depth, 18 <sub>2</sub> m	33° 03'.8 S	137° 39'.1 E
--------	--------------------------	-------------	--------------

**819 AUSTRALIA - VICTORIA - Lakes Entrance - Depths**

Gippsland Ports

**Aus 182 (Lakes Entrance) [721/2018]**

Insert	accompanying block	37° 53'.4 S	147° 58'.3 E
--------	--------------------	-------------	--------------

**820 AUSTRALIA - VICTORIA - Port Phillip - Point Richards - Fish haven; light beacons**

Parks Victoria Notice 263/2018

**Aus 143 [775/2018]**

Insert	north cardinal light beacon, Q, with topmark	38° 06'.81 S	144° 37'.29 E
--------	--	--------------	---------------

**Aus 157 [722/2018]**

Insert	north cardinal light beacon, Q, with topmark	38° 06'.852 S	144° 37'.193 E
	north cardinal light beacon, Q, with topmark	38° 06'.809 S	144° 37'.286 E
	fish haven symbol, centred on	38° 06'.838 S	144° 37'.246 E

**821 AUSTRALIA - VICTORIA - Port Phillip - Portarlington - Light beacon**

Parks Victoria Notice 279/2018

**Aus 143 [820/2018]**

Amend	light to Fl.G.6s	38° 06'.6 S	144° 39'.5 E
-------	------------------	-------------	--------------

**Aus 157 [820/2018]**

Amend	light beacon to Fl.G.6s	38° 06'.64 S	144° 39'.45 E
-------	-------------------------	--------------	---------------

**822 AUSTRALIA - VICTORIA - Yarra River - Victoria Dock - Dolphin; nav aids**  
Victorian Ports Corporation (Melbourne) Notice 254/2018

**Aus 154 [355/2018]**

Replace	light with port lateral pillar light buoy, <i>Fl(2)R.2-5s</i> , without topmark	37° 49'.09 S	144° 55'.90 E
---------	---	--------------	---------------

**823 AUSTRALIA - TASMANIA - Devonport - Depths**  
HydroSurvey Australia

**Aus 164 (Devonport) [399/2018]**

Insert	depth, 9 <sub>9</sub> m	41° 09'.75 S	146° 22'.23 E
Delete	depth, 10 <sub>4</sub> m	41° 09'.72 S	146° 22'.24 E
	10m contour, between	41° 09'.69 S	146° 22'.29 E
		41° 09'.75 S	146° 22'.25 E

**824 AUSTRALIA - TASMANIA - Port Dalrymple - Kelso - Radio masts**  
Broadcast Australia

**Aus 167 [69/2018]**

Delete	radio mast	41° 06'.17 S	146° 47'.02 E
	radio mast	41° 06'.25 S	146° 47'.02 E
	legend, (R.Lts)	41° 06'.19 S	146° 47'.10 E

**Aus 799 [69/2018]**

Delete	radio mast with legend, (R.Lts)	41° 06'.2 S	146° 47'.0 E
--------	---------------------------------	-------------	--------------

**825 SOLOMON ISLANDS - Florida Islands - Nggela Sule - Siota Harbour to Tulaghi Harbour - Nav aids**  
Solomon Islands Maritime Safety Administration

**SLB 103 (Tulaghi Harbour) [22/2018]**

Insert	beacon with starboard lateral topmark	9° 06'.615 S	160° 10'.364 E
--------	---------------------------------------	--------------	----------------

**SLB 201 [778/2018]**

Insert	beacon with starboard lateral topmark	9° 06'.62 S	160° 10'.36 E
	starboard lateral topmark	9° 06'.47 S	160° 11'.38 E
	port lateral topmark	9° 06'.37 S	160° 11'.00 E
	beacon with port lateral topmark	9° 07'.34 S	160° 11'.63 E
	beacon with port lateral topmark	9° 08'.05 S	160° 12'.59 E
	text, <i>Marked by beacons</i>	9° 03'.55 S	160° 18'.15 E
Delete	beacon	9° 07'.8 S	160° 12'.4 E
	depth, 25m	9° 07'.2 S	160° 11'.7 E
	depth, 29m	9° 06'.3 S	160° 11'.5 E

**826 SOLOMON ISLANDS - Marau Sound - Light buoys**  
Solomon Islands Maritime Safety Administration Notice 6/2018

**SLB 101 (Marau Sound) [NE 6/4/2018]**

Insert	starboard lateral conical light buoy, <i>Fl.G.3s</i> , without topmark	9° 46'.54 S	160° 50'.48 E
	port lateral cylindrical light buoy, <i>Fl.R.3s</i> , without topmark	9° 46'.81 S	160° 51'.08 E
	port lateral cylindrical light buoy, <i>Fl.R.3s</i> , without topmark	9° 49'.36 S	160° 50'.83 E

**827(T)/2018 AUSTRALIA - QUEENSLAND - Cairns - Trinity Inlet - Wreck salvaged**

*Former Notice* - 251(T)/2018 is cancelled  
Maritime Safety Queensland

Cancel this notice on receipt.

**Chart formerly affected - Aus 264**

**828(T)/2018 AUSTRALIA - QUEENSLAND - Cleveland Bay - Light buoy withdrawn**

Maritime Safety Queensland Notice 354(T)/2018

The special light buoy, *Fl.Y.4s E1* (19° 08'.24 S 146° 55'.81 E), has been temporarily withdrawn; an obstruction, with least depth 12m, exists in situ.

**Chart temporarily affected - Aus 256 - Aus 827**

**829(T)/2018 AUSTRALIA - QUEENSLAND - Cooktown - Light buoys relit**

*Former Notice* - 405(T)/2018 is cancelled  
Maritime Safety Queensland

Cancel this notice on receipt.

**Chart formerly affected - Aus 270**

**830(T)/2018 AUSTRALIA - QUEENSLAND - Flinders Reef - Light buoy withdrawn**

*Former Notices* - 325(T)/2018, 456(T)/2018 are cancelled  
Maritime Safety Queensland Notice 370(T)/2018

The north cardinal light buoy, *VQ* (26° 58'.20 S 153° 29'.46 E), has been temporarily withdrawn; a special spar light buoy, *Fl.Y.2.5s AIS*, exists in situ.

**Chart temporarily affected - Aus 235 - Aus 236**

**831(T)/2018 AUSTRALIA - QUEENSLAND - Great Sandy Strait - Stewart Island - Beacon destroyed**

Maritime Safety Queensland Notice 358(T)/2018

The beacon in position 25° 37'.76 S 152° 58'.36 E has been destroyed; a starboard conical buoy exists in situ.

**Chart temporarily affected - Aus 240**

**832(T)/2018 AUSTRALIA - QUEENSLAND - Mooloolaba - Dredging complete**

*Former Notice* - 328(T)/2018 is cancelled  
Maritime Safety Queensland Notice 371(T)/2018

Cancel this notice on receipt.

**Chart formerly affected - Aus 235**

**833(T)/2018 AUSTRALIA - QUEENSLAND - Mooloolaba - Shoaling**

*Former Notice* - 329(T)/2018 is cancelled  
Maritime Safety Queensland Notice 371(T)/2018

Cancel this notice on receipt.

**Chart formerly affected - Aus 235**

**834(T)/2018 AUSTRALIA - QUEENSLAND - Moreton Bay - Manly Boat Harbour - Dredging operations completed***Former Notice* - 569(T)/2017 is cancelled

Maritime Safety Queensland Notice 365/2018

Cancel this notice on receipt.

**Chart formerly affected - Aus 236****835(T)/2018 AUSTRALIA - QUEENSLAND - Moreton Bay - Fison Channel - Dredging operations completed***Former Notice* - 32(T)/2018 is cancelled

Maritime Safety Queensland

Cancel this notice on receipt.

**Chart formerly affected - Aus 236****836(T)/2018 PAPUA NEW GUINEA - Madehas Island - Light relit***Former Notice* - 299(T)/2017 is cancelled

National Maritime Safety Authority PNG Notice 5/2018

Cancel this notice on receipt.

**Chart formerly affected - Aus 397 - Aus 399 - Aus 684 - Aus 4060 (INT 60) - Aus 4604 (INT 604) - Aus 4622 (INT 622)****837(T)/2018 AUSTRALIA - NORTHERN TERRITORY - Fog Bay - Fish Aggregating Device**

Department of Infrastructure, Planning and Logistics NT Coastal Notice 3(T)/2018

Special light buoy, *Fl.Y.3s*, with topmark exists in position 12° 40'.0 S 130° 10'.0 E.**Chart temporarily affected - Aus 316 - Aus 724****838(T)/2018 TIMOR-LESTE - Sahul Banks - Drill rig***Former Notice* - 694(T)/2018 is cancelledMODU *Noble Tom Prosser*Drill rig, *Noble Tom Prosser*, is conducting drilling operations in position 11° 04'.06 S 126° 36'.49 E.**Chart temporarily affected - Aus 312 - Aus 4721 (INT 721)****839(T)/2018 AUSTRALIA - WESTERN AUSTRALIA - Alkimos Reef - Survey operations**

Department of Transport WA Notice 124/2018

Vessels *Noel* and *DFMT*, with a 140m towed array, are conducting a geophysical survey in an area bounded by the following positions:

31° 36'.67 S 115° 39'.65 E

31° 38'.12 S 115° 36'.25 E

31° 39'.70 S 115° 37'.05 E

31° 37'.64 S 115° 40'.00 E.

Mariners are advised to navigate with caution in the area.

**Chart temporarily affected - Aus 754****840(T)/2018 AUSTRALIA - WESTERN AUSTRALIA - Direction Bank - Cable operations completed***Former Notice* - 792(T)/2018 is cancelled

Australian Maritime Safety Authority

Cancel this notice on receipt.

**Chart formerly affected - Aus 112 - Aus 754 - Aus 4725 (INT 725)**

**841(T)/2018 AUSTRALIA - WESTERN AUSTRALIA - Geographe Bay - Scientific instruments**

Department of Transport WA Notice 121/2018, BMT

Scientific instruments marked by special spherical light buoys, *Fl.Y.1-5s*, exist in the following positions:

33° 37'.34 S 115° 23'.85 E  
 33° 37'.35 S 115° 23'.75 E  
 33° 37'.51 S 115° 22'.34 E  
 33° 37'.51 S 115° 22'.27 E  
 33° 38'.08 S 115° 22'.39 E  
 33° 38'.08 S 115° 22'.32 E.

**Chart temporarily affected - Aus 116 - Aus 755**

**842(T)/2018 AUSTRALIA - WESTERN AUSTRALIA - Onslow - Beadon Creek - Dredging operations**

Department of Transport WA Notice 123/2018

The dredge *Pilbara Sawfish* and support vessels are conducting dredging operations in Beadon Creek (21° 38'.36 S 115° 07'.97 E).

A 300m floating pipeline, marked by special light buoys, exists from the dredge.

Vessels involved in the works will display appropriate lights and shapes.

The dredge will monitor VHF Ch 16 and mariners must make contact prior to navigating past the dredge.

Mariners are advised to navigate with caution in the area.

**Chart temporarily affected - Aus 69**

**843(T)/2018 AUSTRALIA - WESTERN AUSTRALIA - Perth - Subsea operations**

Australian Maritime Safety Authority Auscoast Warning 201/2018

Vessel *Ile De Brehat* is conducting subsea operations in an bounded by the following positions:

31° 52'.50 S 115° 40'.50 E  
 31° 52'.50 S 115° 44'.50 E  
 31° 56'.00 S 115° 44'.50 E  
 31° 56'.00 S 115° 40'.50 E.

Mariners are advised to navigate with caution. 1M clearance requested.

**Chart temporarily affected - Aus 112 - Aus 754**

**844(T)/2018 AUSTRALIA - VICTORIA - Port Fairy Bay - Scientific instrument**

Maritime Safety Victoria Notice 281(T)/2018

A special spherical light buoy, *Fl.Y.2-5s* exists in position 38° 22'.92 S 142° 17'.37 E.

**Chart temporarily affected - Aus 141 - Aus 349**

**845(T)/2018 AUSTRALIA - TASMANIA - Burnie - Scientific instrument**

Marine and Safety Tasmania Notice M154/2018

A special light buoy, *Fl.Y.2-5s*, exists in position 41° 03'.37 S 145° 56'.07 E.

**Chart temporarily affected - Aus 163**

**846(T)/2018 SOLOMON ISLANDS - New Georgia Island - Munda Point to South Island - Lights relit**

*Former Notice - 184(T)/2018 is cancelled*

Solomon Islands Maritime Safety Administration 3/2018

Cancel this notice on receipt.

**Chart formerly affected - Aus 4604 (INT 604) - Aus 4623 (INT 623) - Aus 4634 (INT 634) - SLB 302**

**847(T)/2018 SOLOMON ISLANDS - Nusatupe Island - Topmark destroyed**

Solomon Islands Maritime Safety Administration Notice 3/2018

The topmark on light beacon, *Fl(3)R.10s 10m 5M* (8° 05'.55 S 156° 51'.81 E), has been destroyed.

**Chart temporarily affected - SLB 102 - SLB 301 - SLB 302****848(T)/2018 SOLOMON ISLANDS - Tawara'o Island to Taivu Point - Lights unlit**

Solomon Islands Maritime Safety Administration Notice 4/2018, 7/2018

The light beacon, *LFl(2)20s 10m 5M* (9° 24'.54 S 160° 21'.02 E), is unlit.

The light beacon, *Fl.10s 10m 10M* (9° 49'.39 S 160° 54'.24 E), is unlit.

**Chart temporarily affected - Aus 4623 (INT 623) - Aus 4634 (INT 634) - SLB 101 - SLB 201 - SLB 304 - SLB 305**

II

**HYDROGRAPHIC REPORTS**

NIL



### III

#### **NAVIGATION WARNINGS**

The Australian Hydrographic Office will no longer compile Section III of the Australian Notices to Mariners. For the most up to date navigation warnings please refer to:

AMSA Navigation Warnings

<http://amsa.gov.au/search-and-rescue/distress-and-safety-comms/msi/msi-email/index.asp>

New Zealand Notices to Mariners (Navarea XIV warnings)

<http://www.linz.govt.nz/sea/maritime-safety/notices-mariners>

*To accompany Australian Notice to Mariners 805/2018*

**SYDNEY VESSEL TRAFFIC SERVICE AREA**

For entry into Sydney Harbour, vessels approaching Port Jackson are to contact Sydney Vessel Traffic Services (Call Sign Sydney VTS) on VHF channel 13 one hour prior to and when entering port limits.

For entry into Botany Bay, vessels approaching Port Botany are to contact Sydney Vessel Traffic Services (Call Sign Sydney VTS) on VHF channel 12 one hour prior to and when entering port limits.

*Note for chart Aus 197*

*To accompany Australian Notice to Mariners 805/2018*

**SYDNEY VESSEL TRAFFIC SERVICE AREA**

For entry into Sydney Harbour, vessels approaching Port Jackson are to contact Sydney Vessel Traffic Services (Call Sign Sydney VTS) on VHF channel 13 one hour prior to and when entering port limits.

For entry into Botany Bay, vessels approaching Port Botany are to contact Sydney Vessel Traffic Services (Call Sign Sydney VTS) on VHF channel 12 one hour prior to and when entering port limits.

*Note for chart Aus 200*

*To accompany Australian Notice to Mariners 805/2018*

**SYDNEY VESSEL TRAFFIC SERVICE AREA**

For entry into Sydney Harbour, vessels approaching Port Jackson are to contact Sydney Vessel Traffic Services (Call Sign Sydney VTS) on VHF channel 13 one hour prior to and when entering port limits.

For entry into Botany Bay, vessels approaching Port Botany are to contact Sydney Vessel Traffic Services (Call Sign Sydney VTS) on VHF channel 12 one hour prior to and when entering port limits.

*Note for chart Aus 809*

*To accompany Australian Notice to Mariners 805/2018*

**SYDNEY VESSEL TRAFFIC SERVICE AREA**

For entry into Sydney Harbour, vessels approaching Port Jackson are to contact Sydney Vessel Traffic Services (Call Sign Sydney VTS) on VHF channel 13 one hour prior to and when entering port limits.

For entry into Botany Bay, vessels approaching Port Botany are to contact Sydney Vessel Traffic Services (Call Sign Sydney VTS) on VHF channel 12 one hour prior to and when entering port limits.

*Note for chart Aus 198*

*To accompany Australian Notice to Mariners 805/2018*

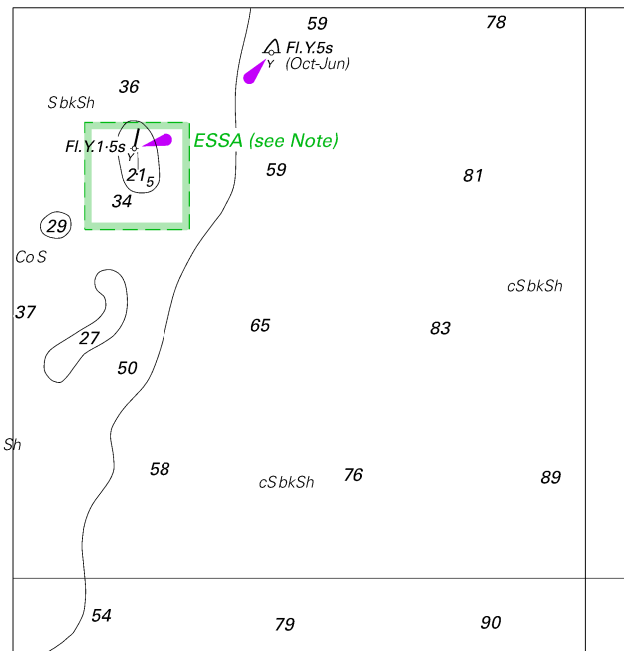
**SYDNEY VESSEL TRAFFIC SERVICE AREA**

For entry into Sydney Harbour, vessels approaching Port Jackson are to contact Sydney Vessel Traffic Services (Call Sign Sydney VTS) on VHF channel 13 one hour prior to and when entering port limits.

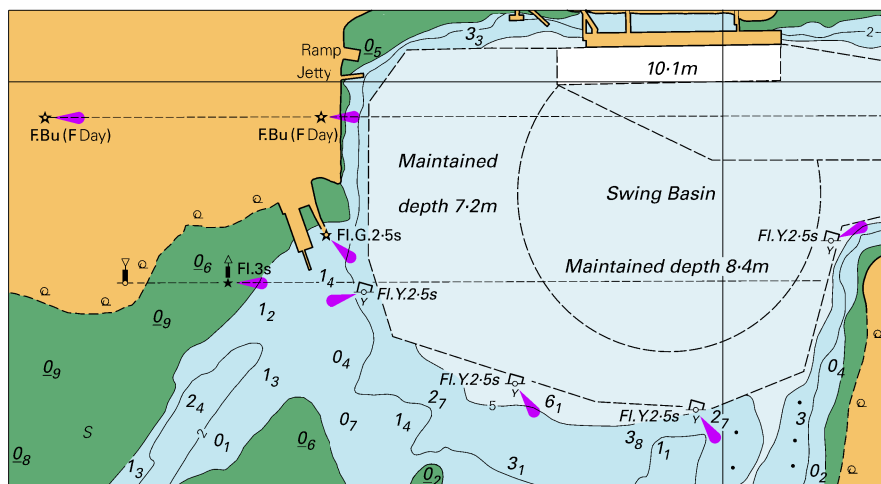
For entry into Botany Bay, vessels approaching Port Botany are to contact Sydney Vessel Traffic Services (Call Sign Sydney VTS) on VHF channel 12 one hour prior to and when entering port limits.

*Note for chart Aus 808*

To accompany Australian Notice to Mariners 807/2018



To accompany Australian Notice to Mariners 812/2018

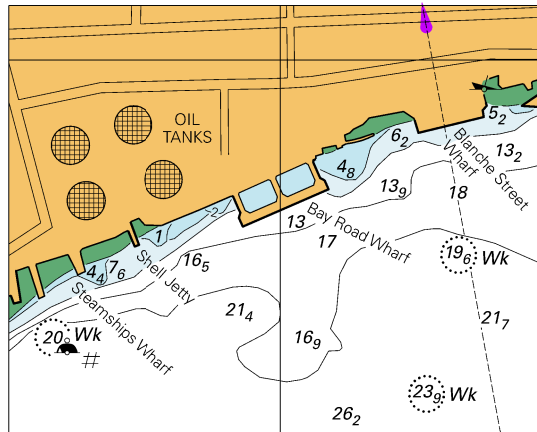


Block for Chart Aus 258

© Commonwealth of Australia 2018

(116.2 x 62.7mm)

To accompany Australian Notice to Mariners 813/2018

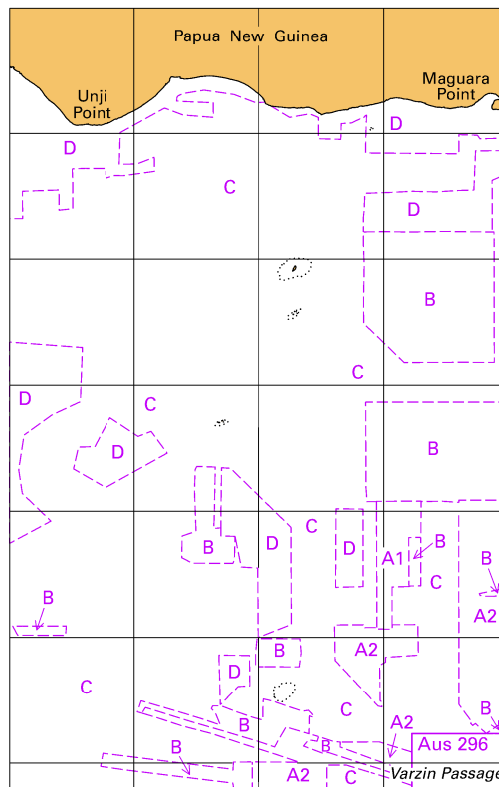


© Commonwealth of Australia 2018

Block for Chart Aus 680

(70.7 x 56.6mm)

To accompany Australian Notice to Mariners 814/2018

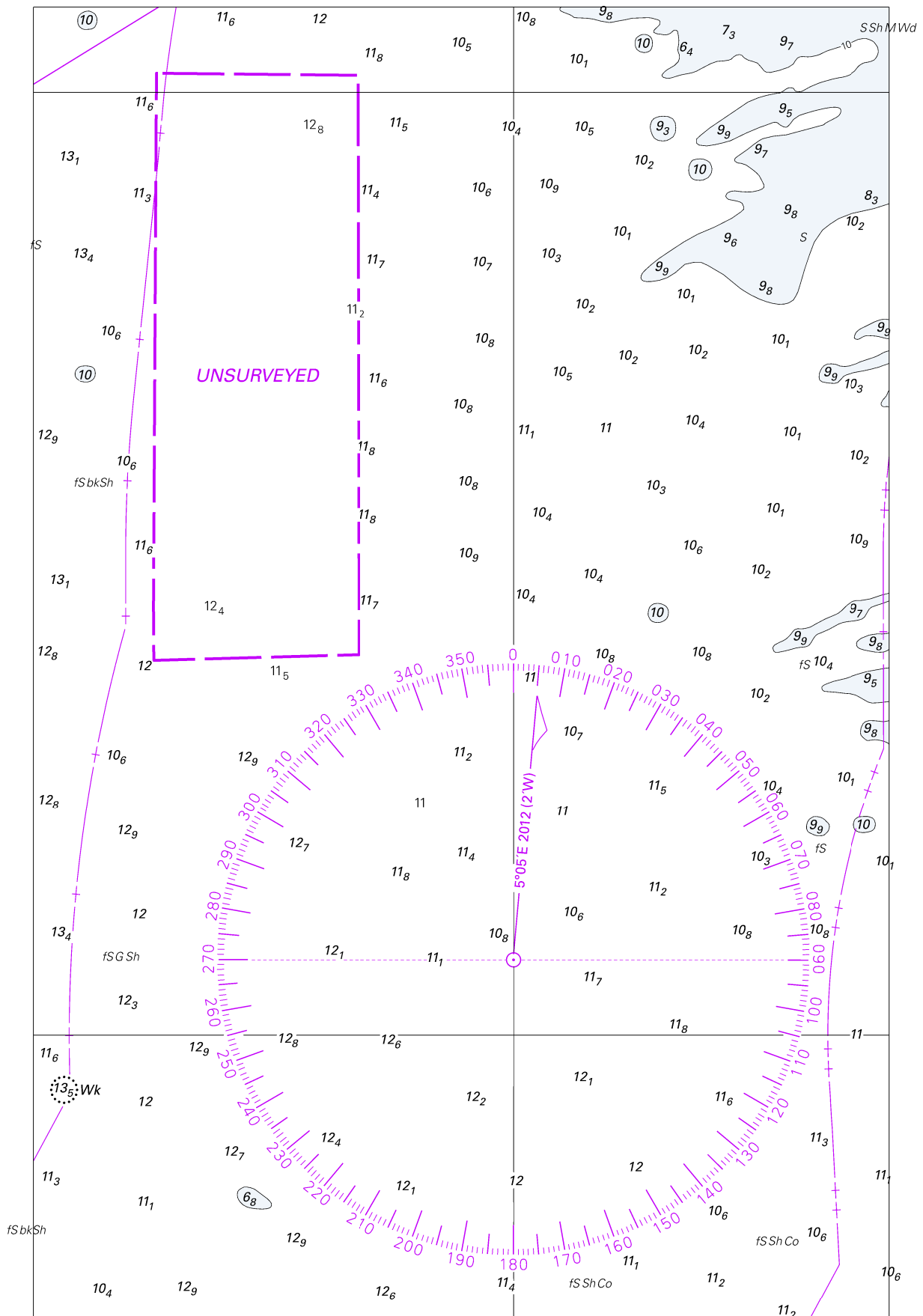


© Commonwealth of Australia 2018

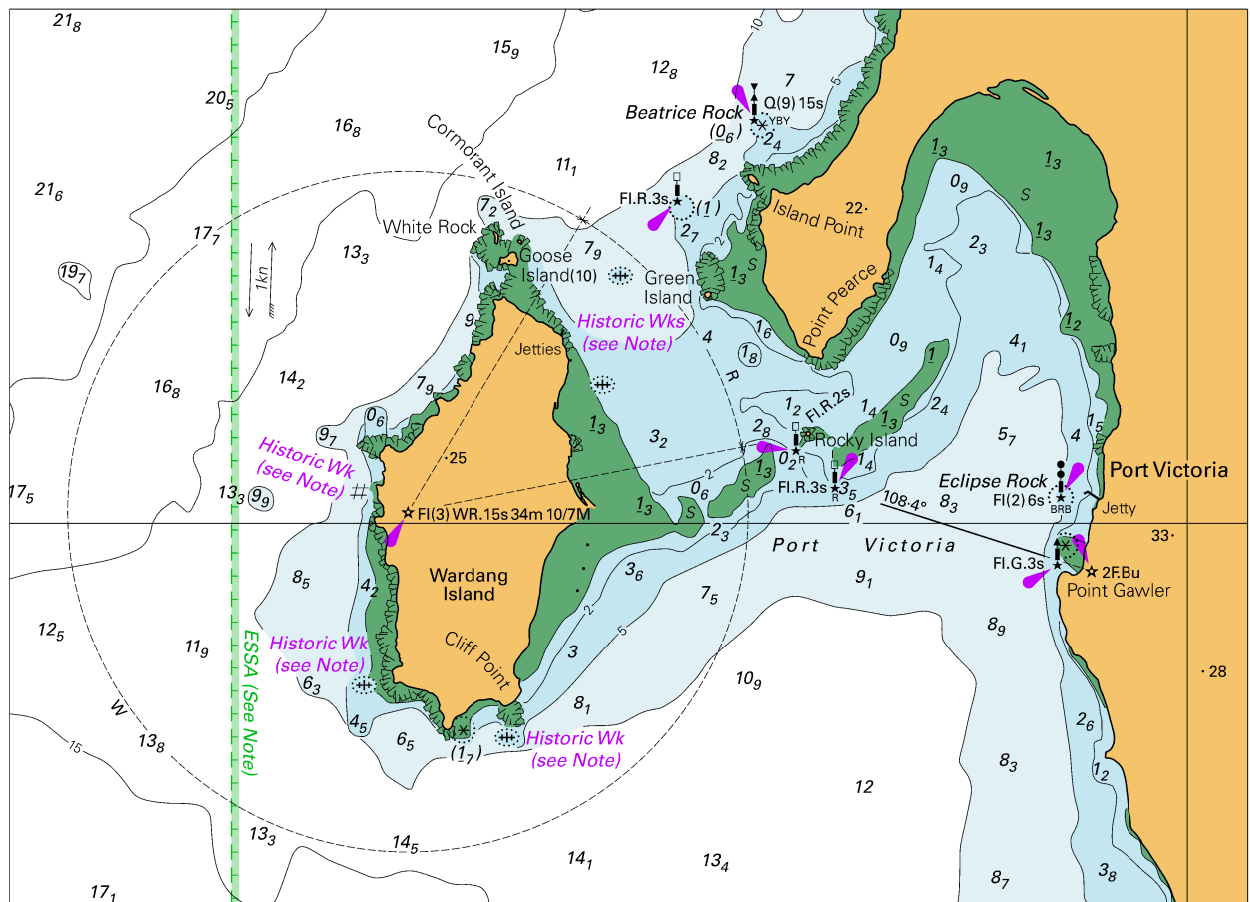
Block B for Chart Aus 842

(65.7 x 103.2mm)

To accompany Australian Notice to Mariners 814/2018



To accompany Australian Notice to Mariners 817/2018



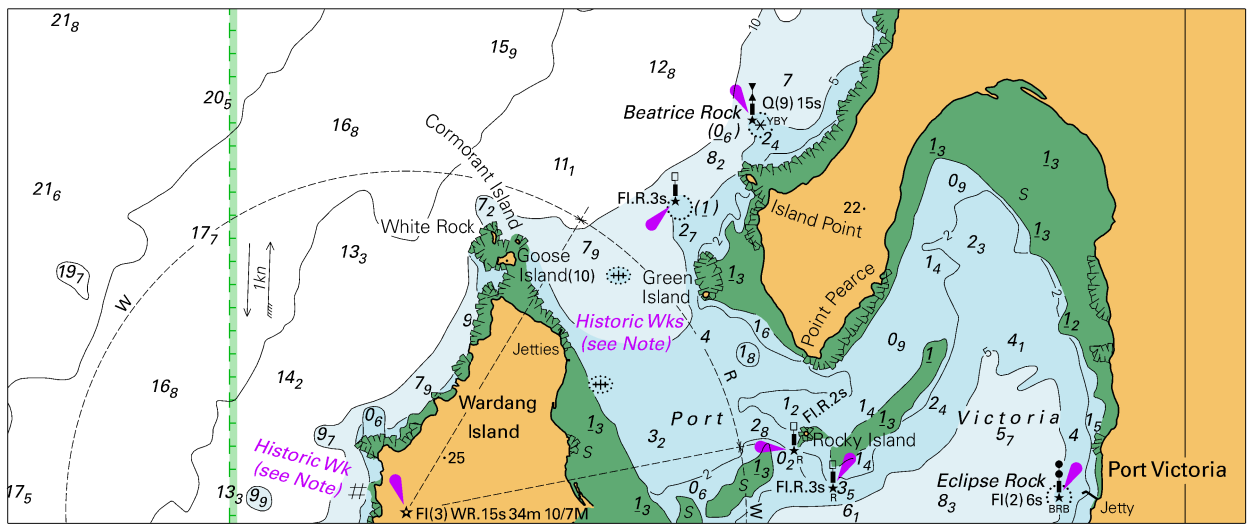
Block for Chart Aus 776

© Commonwealth of Australia 2018

(163.7 x 118.5mm)



To accompany Australian Notice to Mariners 817/2018



Block for Chart Aus 777

© Commonwealth of Australia 2018

(163.7 x 67.9mm)

To accompany Australian Notice to Mariners 819/2018

