

To accompany Australian Notice to Mariners 273/2018

DREDGED AREAS

Depths in dredged areas, although generally maintained, may be less than charted. For the latest information, consult the Harbour Master.

Note for chart Aus 4

To accompany Australian Notice to Mariners 273/2018

DREDGED AREAS

Depths in dredged areas, although generally maintained, may be less than charted. For the latest information, consult the Harbour Master.

Note for chart Aus 6

To accompany Australian Notice to Mariners 273/2018

DREDGED AREAS

Depths in dredged areas, although generally maintained, may be less than charted. For the latest information, consult the Harbour Master.

Note for chart Aus 255

To accompany Australian Notice to Mariners 273/2018

DREDGED AREAS

Depths in dredged areas, although generally maintained, may be less than charted. For the latest information, consult the Harbour Master.

Note for chart Aus 257

To accompany Australian Notice to Mariners 273/2018

DREDGED AREAS

Depths in dredged areas, although generally maintained, may be less than charted. For the latest information, consult the Harbour Master.

Note for chart Aus 258

To accompany Australian Notice to Mariners 273/2018

DREDGED AREAS

Depths in dredged areas, although generally maintained, may be less than charted. For the latest information, consult the Harbour Master.

Note for chart Aus 262

To accompany Australian Notice to Mariners 273/2018

DREDGED AREAS

Depths in dredged areas, although generally maintained, may be less than charted. For the latest information, consult the Harbour Master.

Note for chart Aus 263

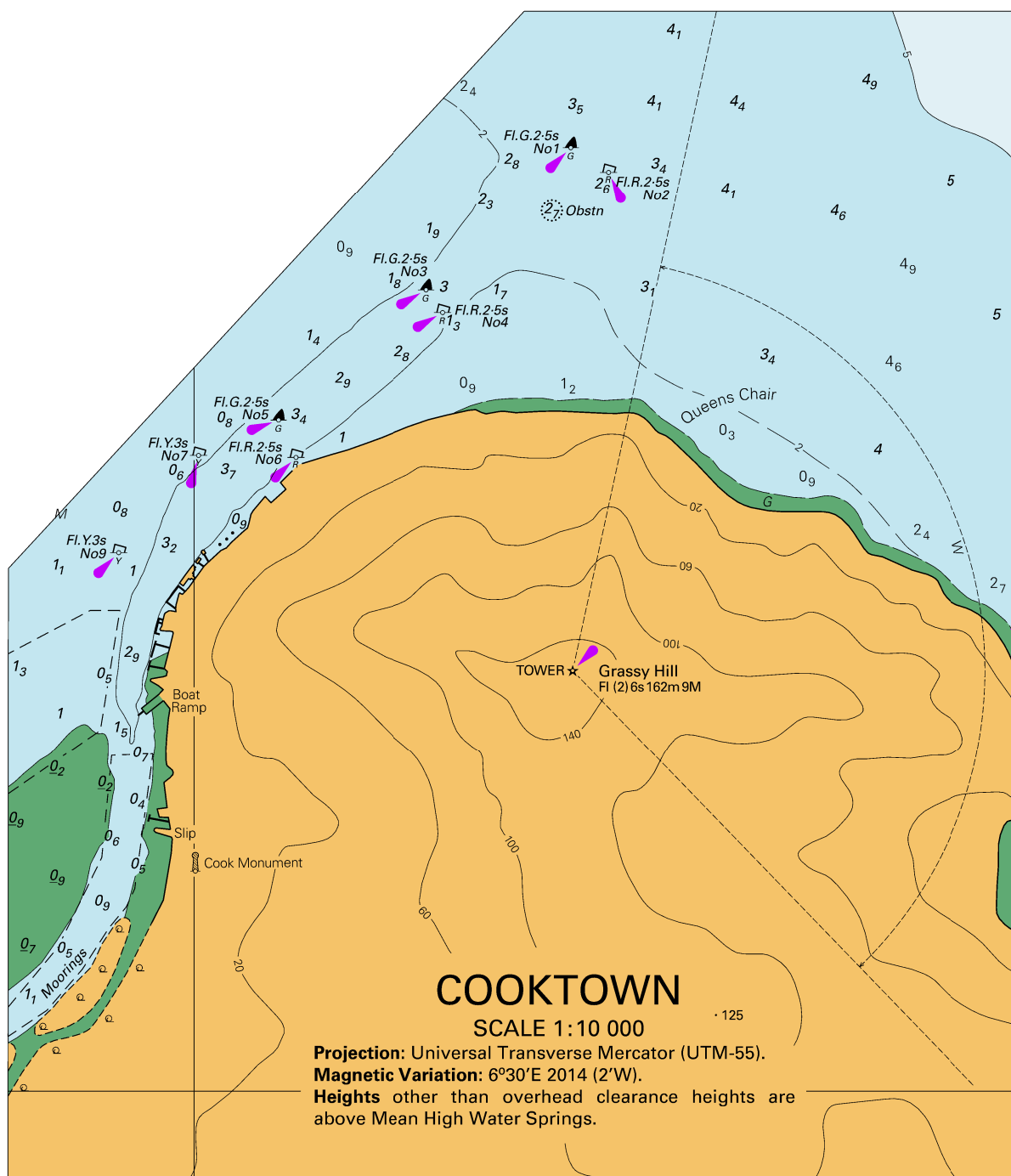
To accompany Australian Notice to Mariners 273/2018

DREDGED AREAS

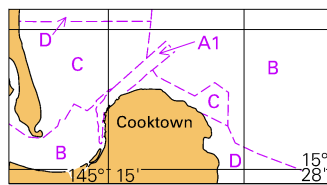
Depths in dredged areas, although generally maintained, may be less than charted. For the latest information, consult the Harbour Master.

Note for chart Aus 264

To accompany Australian Notice to Mariners 268/2018



To accompany Australian Notice to Mariners 268/2018

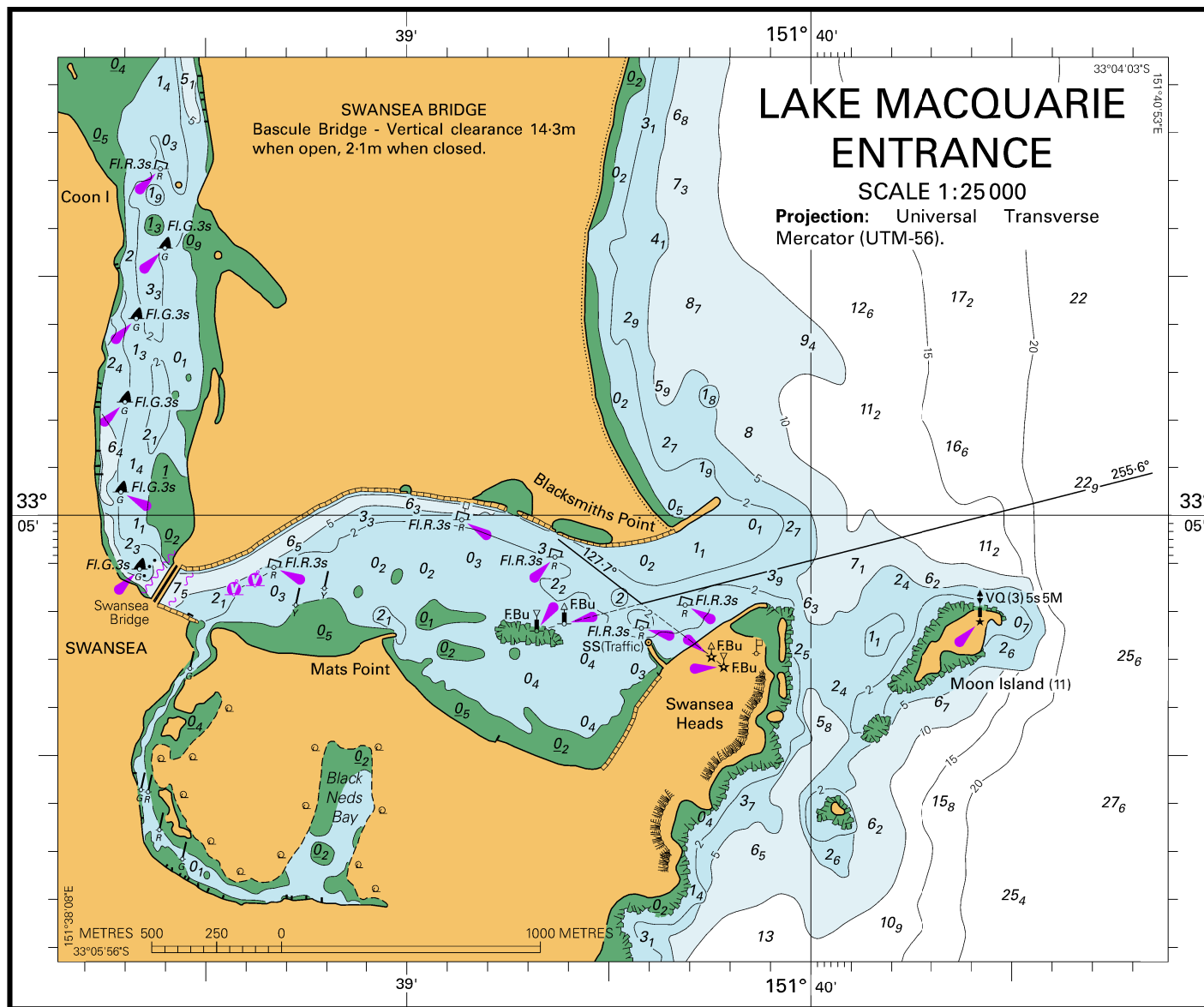


© Commonwealth of Australia 2018

Block B for Chart Aus 270 (42.2 x 23.0mm)

Barrow Island Port, WA (20° 48'S, 115° 29'E)	
UN/LOCODE: AU BWB	
Paper charts:	Aus 62, 66, 67, 327, 742
AusENC cells:	AU5066P0, AU5067P0, AU421115
Security Regulated Port:	Yes
Port Authority:	Department of Transport WA
Website:	www.transport.wa.gov.au/marine
Email:	Port.ops@transport.wa.gov.au
Harbour Master's office:	+61 8 9435 7692
Fax:	+61 8 9435 7807
Deputy Harbour Master:	+61 8 9435 7533
Operator:	Chevron Australia Pty Ltd
Website:	www.chevronaustralia.com/our-businesses/barrow-island
Email:	barrowislandport@chevron.com
Telephone:	+61 8 9184 3667 +61 8 9184 3666 (24 hours / emergency)
Marine Communications	
Telephone:	+61 8 9184 3666
Email:	bwimco@chevron.com
Pilotage:	Compulsory 35m LOA
Pilot Boarding Ground:	20° 48.68'S, 115° 35.93'E
Communication:	"Port of Barrow"
Call up, emergencies:	VHF Ch 10, 16
Port operations:	VHF Ch 10
Tugs:	VHF Ch 08, 09
Notice of ETA:	96 hours

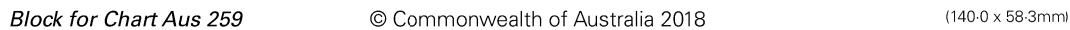
To accompany Australian Notice to Mariners 270/2018



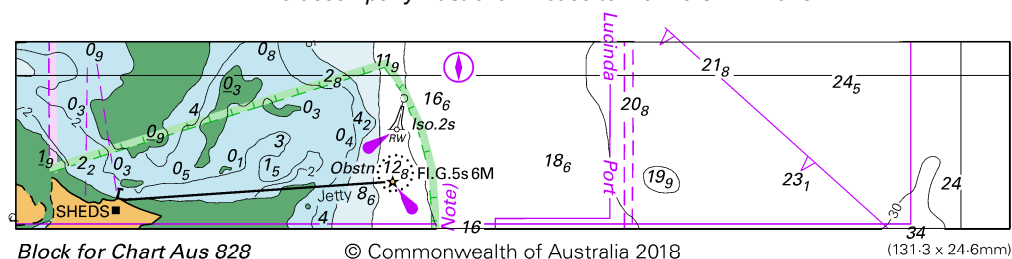
Block for Chart Aus 809

© Commonwealth of Australia 2018

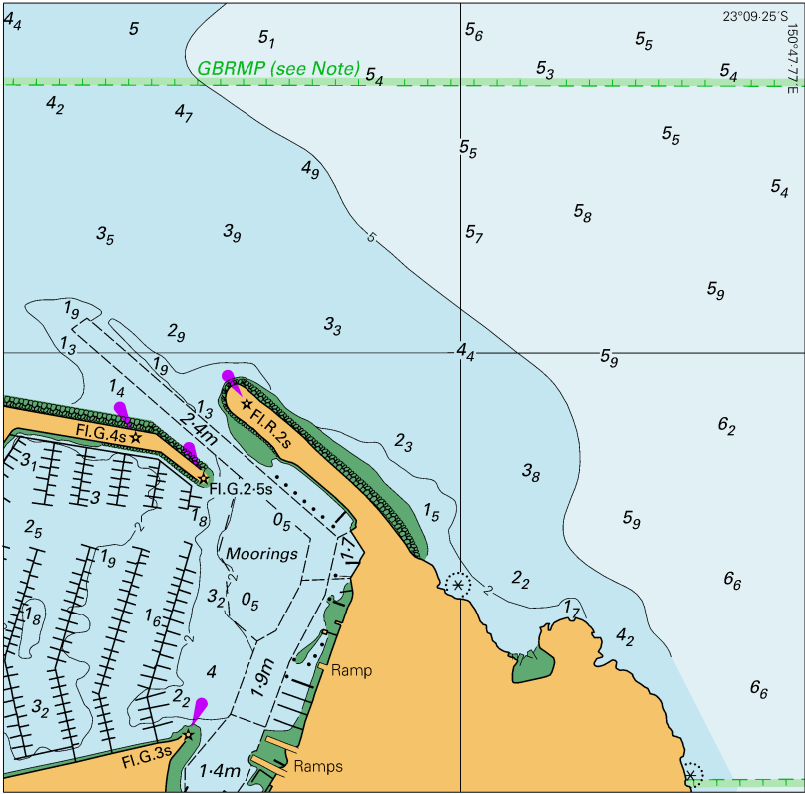
To accompany Australian Notice to Mariners 277/2018



To accompany Australian Notice to Mariners 277/2018



To accompany Australian Notice to Mariners 278/2018



© Commonwealth of Australia 2018

Block for Chart Aus 247

(106.0 x 104.3mm)