

*To accompany Australian Notice to Mariners 236/2018*

DREDGED AREAS

Depths in dredged areas, although generally maintained, may be less than charted. For the latest information, consult the Harbour Master.

*Note for chart Aus 237*

*To accompany Australian Notice to Mariners 236/2018*

DREDGED AREAS

Depths in dredged areas, although generally maintained, may be less than charted. For the latest information, consult the Harbour Master.

*Note for chart Aus 242*

*To accompany Australian Notice to Mariners 236/2018*

DREDGED AREAS

Depths in dredged areas, although generally maintained, may be less than charted. For the latest information, consult the Harbour Master.

*Note for chart Aus 244*

*To accompany Australian Notice to Mariners 236/2018*

DREDGED AREAS

Depths in dredged areas, although generally maintained, may be less than charted. For the latest information, consult the Harbour Master.

*Note for chart Aus 246*

*To accompany Australian Notice to Mariners 236/2018*

DREDGED AREAS

Depths in dredged areas, although generally maintained, may be less than charted. For the latest information, consult the Harbour Master.

*Note for chart Aus 250*

*To accompany Australian Notice to Mariners 236/2018*

DREDGED AREAS

Depths in dredged areas, although generally maintained, may be less than charted. For the latest information, consult the Harbour Master.

*Note for chart Aus 271*

*To accompany Australian Notice to Mariners 236/2018*

DREDGED AREAS

Depths in dredged areas, although generally maintained, may be less than charted. For the latest information, consult the Harbour Master.

*Note for chart Aus 238*

*To accompany Australian Notice to Mariners 236/2018*

DREDGED AREAS

Depths in dredged areas, although generally maintained, may be less than charted. For the latest information, consult the Harbour Master.

*Note for chart Aus 243*

*To accompany Australian Notice to Mariners 236/2018*

DREDGED AREAS

Depths in dredged areas, although generally maintained, may be less than charted. For the latest information, consult the Harbour Master.

*Note for chart Aus 245*

*To accompany Australian Notice to Mariners 236/2018*

DREDGED AREAS

Depths in dredged areas, although generally maintained, may be less than charted. For the latest information, consult the Harbour Master.

*Note for chart Aus 249*

*To accompany Australian Notice to Mariners 236/2018*

DREDGED AREAS

Depths in dredged areas, although generally maintained, may be less than charted. For the latest information, consult the Harbour Master.

*Note for chart Aus 265*

*To accompany Australian Notice to Mariners 236/2018*

DREDGED AREAS

Depths in dredged areas, although generally maintained, may be less than charted. For the latest information, consult the Harbour Master.

*Note for chart Aus 272*

*To accompany Australian Notice to Mariners 249/2018*

**VOLCANIC ACTIVITY**

Active submarine volcanos exist in this area. Some volcanos have been reported to erupt breaking the surface of the sea and projecting ashes and other volcanic materials into the air. Changes to charted depths, uplifting of reefs and emerging of volcanic islets may occur throughout the area. Due to the unpredictable nature of these events mariners are strongly recommended to avoid the area.

*Note for chart SLB 301*

*To accompany Australian Notice to Mariners 249/2018*

**VOLCANIC ACTIVITY**

Active submarine volcanos exist in this area. Some volcanos have been reported to erupt breaking the surface of the sea and projecting ashes and other volcanic materials into the air. Changes to charted depths, uplifting of reefs and emerging of volcanic islets may occur throughout the area. Due to the unpredictable nature of these events mariners are strongly recommended to avoid the area.

*Note for chart SLB 302*

<b>Bunbury, WA (33° 19'S, 115° 38'E)</b>	
UN/LOCODE: AU BUY	
Paper charts:	Aus 115, 755
AusENC cells:	AU5115P1, AU434115
Security Regulated Port:	Yes
Port Authority:	Southern Ports Authority
Website:	www.southernports.com.au
Email:	enquiries.bunbury@southernports.com.au
Telephone:	+61 8 9729 6527
Pilot	
Email:	pilot@southernports.com.au
Pilotage:	Compulsory > 150 GRT
Pilot Boarding Ground:	33° 15.85'S, 115° 37.40'E
Communication:	"Port of Bunbury"
Call up, emergencies:	VHF Ch 16
On arrival/ Pilots/ tugs:	VHF Ch 12
Notice of ETA:	48 hours
For more information:	www.southernports.com.au

<b>Terminal of Cape Cuvier (Port of Carnarvon), WA (24° 13'S, 113° 24'E)</b>	
UN/LOCODE: AU CCU	
Paper charts:	Aus 73, 331
AusENC cells:	AU5073P1, AU425113
Security Regulated Port:	Yes
Port Authority:	Department of Transport WA
Website:	www.transport.wa.gov.au/marine
Email:	port.ops@transport.wa.gov.au
Harbour Master's office:	+61 8 9435 7692
Fax:	+61 8 9435 7807
Deputy Harbour Master:	+61 8 9435 7533
Port operator:	Rio Tinto - Dampier Salt Pty Ltd
Website:	www.dampiersalt.com.au
Telephone:	+61 8 9942 6003
Pilot	
Telephone:	+61 8 9956 3277
Pilotage:	Compulsory 35m LOA
Pilot Boarding Ground:	24° 12.47'S, 113° 23.45'E
Communication	"Cape Cuvier"
Call up, emergencies:	VHF Ch 16
Pilots:	VHF Ch 06, 08, 12, 67
Notice of ETA:	10 days
For more information:	www.dampiersalt.com.au

<b>Cape Preston, WA (20° 50'S, 116° 12'E)</b>	
UN/LOCODE: AU CPN	
Paper charts:	Aus 68, 327
AusENC cells:	AU5068P1, AU421116
Security Regulated Port:	Yes
Port Authority:	Department of Transport WA
Website:	www.transport.wa.gov.au/marine
Email:	port.ops@transport.wa.gov.au
Harbour Master's office:	+61 8 9435 7692
Fax:	+61 8 9435 7807
Deputy Harbour Master:	+61 8 9435 7533
Port Facility Operator:	Cape Preston Port Company
Email:	port.ops@capepreston.com
Telephone:	+61 8 9178 3850
Pilotage:	Compulsory 35m LOA
Pilot Boarding Ground:	Anchorage CP 6 20° 41.84'S, 116° 09.21'E
Communication	
Call up, emergencies:	VHF Ch 16
Operations:	VHF Ch 15

<b>Dampier, WA (20° 37'S, 116° 43'E)</b>	
UN/LOCODE: AU DAM	
Paper charts:	Aus 57, 58, 59, 60
AusENC cells:	AU5058P0, AU421116
Security Regulated Port:	Yes
Port Authority	Pilbara Ports Authority
Website:	www.pilbaraports.com.au
Email:	info@pilbaraports.com.au
Telephone:	+61 8 9159 6555
Pilots:	Dampier VTS
Telephone:	+61 8 9159 6556
Email:	dampier.vts@pilbaraports.com.au
Pilotage:	Compulsory > 150 GRT
Pilot Boarding Ground:	Will depend on type of vessel, pilot boarding method and pilotage company
Pilot Station A:	20° 21.0'S, 116° 44.0'E
Pilot Station B:	20° 23.7'S, 116° 42.0'E
Pilot Station C:	20° 23.7'S, 116° 43.7'E
Pilot Station D:	20° 28.6'S, 116° 44.3'E
Pilot Station E:	20° 38.5'S, 116° 39.0'E
Communication:	Dampier VTS
Call up, emergencies:	VHF Ch 16
Port:	VHF Ch 11
Pilots:	VHF Ch 13, 68
Tugs:	VHF Ch 13, 68
Ship to ship:	VHF Ch 77
Notice of ETA:	7 days, 72 hours and 4 hours from Port Limits
For more information:	www.pilbaraports.com.au/Port-of-Dampier/Port-Operations

<b>Koolan Island, (Yampi Sound) WA (16° 07'S, 123° 44'E)</b> <b>UN/LOCODE: AU KOI</b>	
Paper charts:	Aus 40, 41
AusENC cells:	AU5041P2, AU417123
Security Regulated Port:	Yes
Port Authority:	Department of Transport WA
Website:	<a href="http://www.transport.wa.gov.au/marine">www.transport.wa.gov.au/marine</a>
Email:	<a href="mailto:port.ops@transport.wa.gov.au">port.ops@transport.wa.gov.au</a>
Harbour Master's office:	+61 8 9435 7692
Fax:	+61 8 9435 7807
Deputy Harbour Master:	+61 8 9435 7533
Port operator:	Mount Gibson Iron Ltd
Website:	<a href="http://www.mtgibsoniron.com.au">www.mtgibsoniron.com.au</a>
Email:	<a href="mailto:ki.portcontrol@mtgibsoniron.com.au">ki.portcontrol@mtgibsoniron.com.au</a>
Telephone:	+61 8 9423 0857
Mobile:	+61 434 738 012
Pilot:	West Coast Pilots P/L
Website:	<a href="http://www.westcoastpilots.com.au">www.westcoastpilots.com.au</a>
email:	<a href="mailto:manager@westcoastpilots.com.au">manager@westcoastpilots.com.au</a>
Telephone:	+61 8 9335 1138
Mobile:	+61 419 195 592
Pilotage:	Compulsory 35m LOA
Pilot Boarding Ground:	16° 07.50'S, 123° 40.00'E
Anchorage KI 1:	16° 08.00'S, 123° 40.30'E
Anchorage KI 2:	16° 08.25'S, 123° 39.40'E
Communication	
Call up, emergencies:	VHF Ch 16
Terminal:	VHF Ch 06, 12

<b>Onslow, WA (21° 38'S, 115° 06'E)</b> <b>UN/LOCODE: AU ONS</b>	
Paper chart:	Aus 64
AusENC cells:	AU5064P1, AU422115, AU422114
Security Regulated Port:	Yes
Port Authority:	Department of Transport WA
Website:	<a href="http://www.transport.wa.gov.au/marine">www.transport.wa.gov.au/marine</a>
Email:	<a href="mailto:port.ops@transport.wa.gov.au">port.ops@transport.wa.gov.au</a>
Harbour Master's office:	+61 8 9435 7692
Fax:	+61 8 9435 7807
Deputy Harbour Master:	+61 8 9435 7533
Operator:	Onslow Salt
Telephone:	+61 8 9184 9000
Email:	<a href="mailto:onslowsalt@akzonobelsalt.com">onslowsalt@akzonobelsalt.com</a>
Pilotage:	Compulsory 35m LOA
Pilot Boarding Ground:	21° 28.50'S, 115° 04.99'E
Communication	
Call up, emergencies:	VHF Ch 16
For more information:	<a href="http://www.transport.wa.gov.au/imagine/ports-handbook.asp">www.transport.wa.gov.au/imagine/ports-handbook.asp</a>

<b>Port Hedland, WA (20° 19'S, 118° 34'E)</b> <b>UN/LOCODE: AU PHE</b>	
Paper charts:	Aus 52, 53, 54
AusENC cells:	AU5052P0, AU42118
Security Regulated Port:	Yes
Port Authority:	Pilbara Ports Authority
Website:	<a href="http://www.pilbaraports.com.au">www.pilbaraports.com.au</a>
Email:	<a href="mailto:info@pilbaraports.com.au">info@pilbaraports.com.au</a>
Telephone:	+61 8 9173 9000
Fax:	+61 8 9173 9060
Pilot:	Port Hedland Pilots
Telephone:	+61 8 9173 9040
Pilotage:	Compulsory > 35m LOA or ≥ 150 GRT
Pilot Boarding Ground:	20° 09.92'S, 118° 33.08'E
Communication:	"Port Hedland VTS"
Call up, emergencies:	VHF Ch 16
Port:	VHF Ch 16, 12, 08
Pilots:	VHF Ch 06, 09, 10, 13, 15, 20, 67, 68, 72, VHF Ch 74, 79
Notice of ETA:	8 days
For more information:	<a href="http://www.pilbaraports.com.au/Port-of-Port-Hedland/Port-operations/Permits-and-procedures-PortHandbook">www.pilbaraports.com.au/Port-of-Port-Hedland/Port-operations/Permits-and-procedures-PortHandbook</a> and / or; <a href="http://www.worldvtsguide.org/">www.worldvtsguide.org/</a>

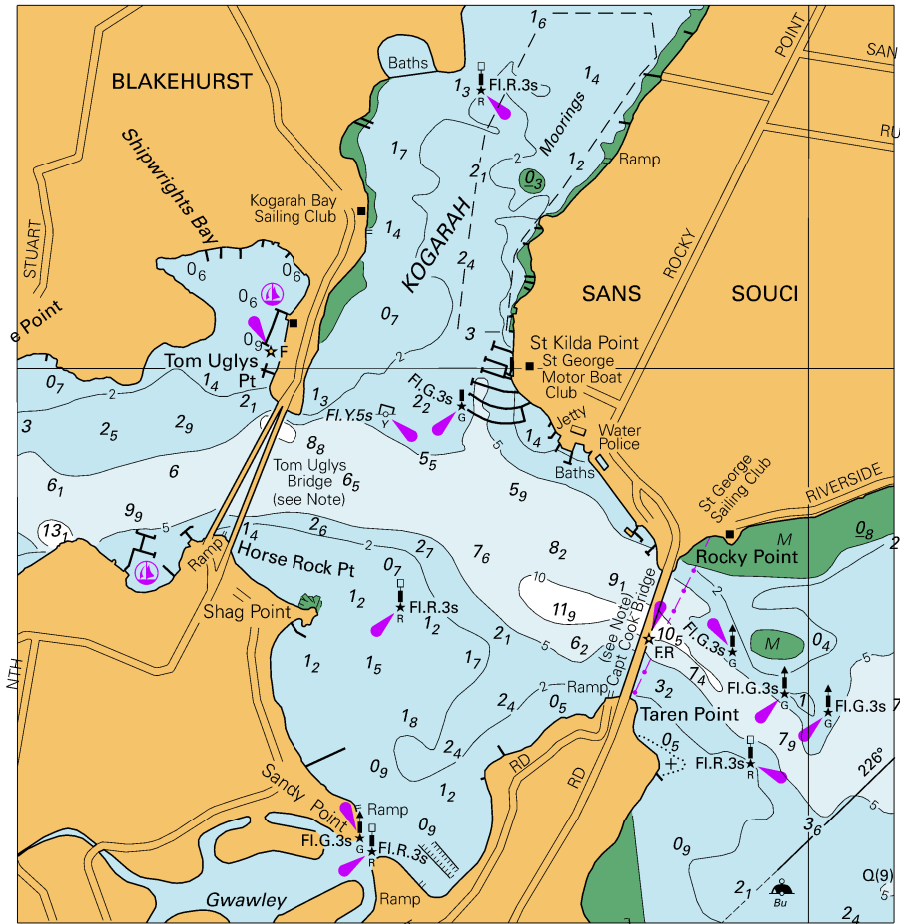
<b>Port Walcott, WA (20° 35'S, 117° 11'E)</b> <b>UN/LOCODE: AU PWL</b>	
Paper charts:	Aus 55, 56
AusENC cells:	AU5056P0, AU421117
Security Regulated Port:	Yes
Port Authority:	Department of Transport WA
Website:	<a href="http://www.transport.wa.gov.au/marine">www.transport.wa.gov.au/marine</a>
Email:	<a href="mailto:port.ops@transport.wa.gov.au">port.ops@transport.wa.gov.au</a>
Harbour Master's office:	+61 8 9435 7692
Fax:	+61 8 9435 7807
Deputy Harbour Master:	+61 8 9435 7533
Operator:	Rio Tinto
Telephone:	+61 8 9186 1487
Fax:	+61 8 9143 5804
Email:	<a href="mailto:marine.operations@riotinto.com">marine.operations@riotinto.com</a>
Pilot:	Port Walcott Pilots
Telephone:	+61 8 9187 1329
Email:	<a href="mailto:pw@mswapilots.com.au">pw@mswapilots.com.au</a>
Pilotage:	Compulsory > 500 GRT
Pilot Boarding Ground:	Anchorage position No. 3 20° 32.4'S 117° 15.00' E
Communication	
Call up, emergencies:	VHF Ch 16
Port:	VHF Ch 14
Helicopter:	VHF Ch 09
Tugs:	VHF Ch 09, 10
Notice of ETA:	7 days

<b>Varanus Island, WA (20° 39'S, 115° 34'E)</b> UN/LOCODE: AU VAR	
Paper chart:	Aus 742
AusENC cells:	AU421115, AU230110
Security Regulated Port:	Yes
Port Authority:	Department of Transport WA
Website:	<a href="http://www.transport.wa.gov.au/marine">www.transport.wa.gov.au/marine</a>
Email:	<a href="mailto:port.ops@transport.wa.gov.au">port.ops@transport.wa.gov.au</a>
Harbour Master's office:	+61 8 9435 7692
Fax:	+61 8 9435 7807
Deputy Harbour Master:	+61 8 9435 7533
Operator:	Quadrant Energy Ltd
Website:	<a href="http://www.quadrantenergy.com.au">www.quadrantenergy.com.au</a>
Email:	<a href="mailto:varanusfieldsup@quadrantenergy.com.au">varanusfieldsup@quadrantenergy.com.au</a>
Telephone:	+61 8 6218 7601
Fax:	+61 8 6218 7617
Pilotage:	Compulsory 35m LOA
Pilot Boarding Ground:	20° 40.00'S, 115° 40.00'E
Communication	
Call up, emergencies:	VHF Ch 16
Operator / Pilots:	VHF Ch 74
Notice of ETA:	96 hours

<b>Wyndham, WA (15° 28'S, 128° 06'E)</b> UN/LOCODE: AU WYN	
Paper chart:	Aus 32
AusENC cells:	AU5032P1, AU416128
Security Regulated Port:	Yes
Port Authority:	Department of Transport WA
Website:	<a href="http://www.transport.wa.gov.au/marine">www.transport.wa.gov.au/marine</a>
Port Operator:	Cambridge Gulf Limited
Website:	<a href="http://www.cgltd.com.au">www.cgltd.com.au</a>
Harbour Master email:	<a href="mailto:hmordport@westnet.com.au">hmordport@westnet.com.au</a>
Port Manager email:	<a href="mailto:ordport@wn.com.au">ordport@wn.com.au</a>
Telephone:	+61 8 9161 1203
Harbour Master Mobile:	+61 428 941 775
Fax:	+61 8 9161 1244
Pilotage:	Compulsory 35m LOA
Pilot Boarding Grounds:	14° 58.15'S, 128° 10.37'E 14° 48.90'S, 128° 18.70'E 15° 07.00'S, 128° 06.00'E (small vessels)
Communication	
Call up, emergencies:	VHF Ch 16
Port / Pilots:	VHF Ch 12
Notice of ETA:	7 days
For more information:	<a href="http://www.cgltd.com.au/cgl-wyndham-port/forms-links">www.cgltd.com.au/cgl-wyndham-port/forms-links</a>

<b>Cockatoo Is (Yampi Sound) , WA (16° 06'S, 123° 37'E)</b> UN/LOCODE: AU CTI	
Paper chart:	Aus 41
AusENC cells:	AU5041P1, AU417123
Security Regulated Port:	Yes
Port Authority:	Department of Transport WA
Website:	<a href="http://www.transport.wa.gov.au/marine">www.transport.wa.gov.au/marine</a>
Email:	<a href="mailto:port.ops@transport.wa.gov.au">port.ops@transport.wa.gov.au</a>
Harbour Master's office:	+61 8 9435 7692
Fax:	+61 8 9435 7807
Deputy Harbour Master:	+61 8 9435 7533
Operator:	Pluton Resources Limited
Website:	<a href="http://www.plutonresources.com">www.plutonresources.com</a>
Email:	<a href="mailto:anson.griffith@pluton.com.au">anson.griffith@pluton.com.au</a>
Telephone:	+61 8 6145 1800
Fax:	+61 8 6145 1899
Pilot	
Mobile:	+61 434 803 525
Email:	<a href="mailto:jfiggess@iinet.net.au">jfiggess@iinet.net.au</a>
Pilotage:	Compulsory 35m LOA
Pilot Boarding Ground:	16° 07.00'S, 123° 35.30'E
Communication:	"Cockatoo Island"
Call up, emergencies:	VHF Ch 16
Working:	VHF Ch 13
Notice of ETA:	7, 5, 3, 2, 1 days ( <a href="mailto:broome@ISS-shipping.com">broome@ISS-shipping.com</a> )

To accompany Australian Notice to Mariners 232/2018

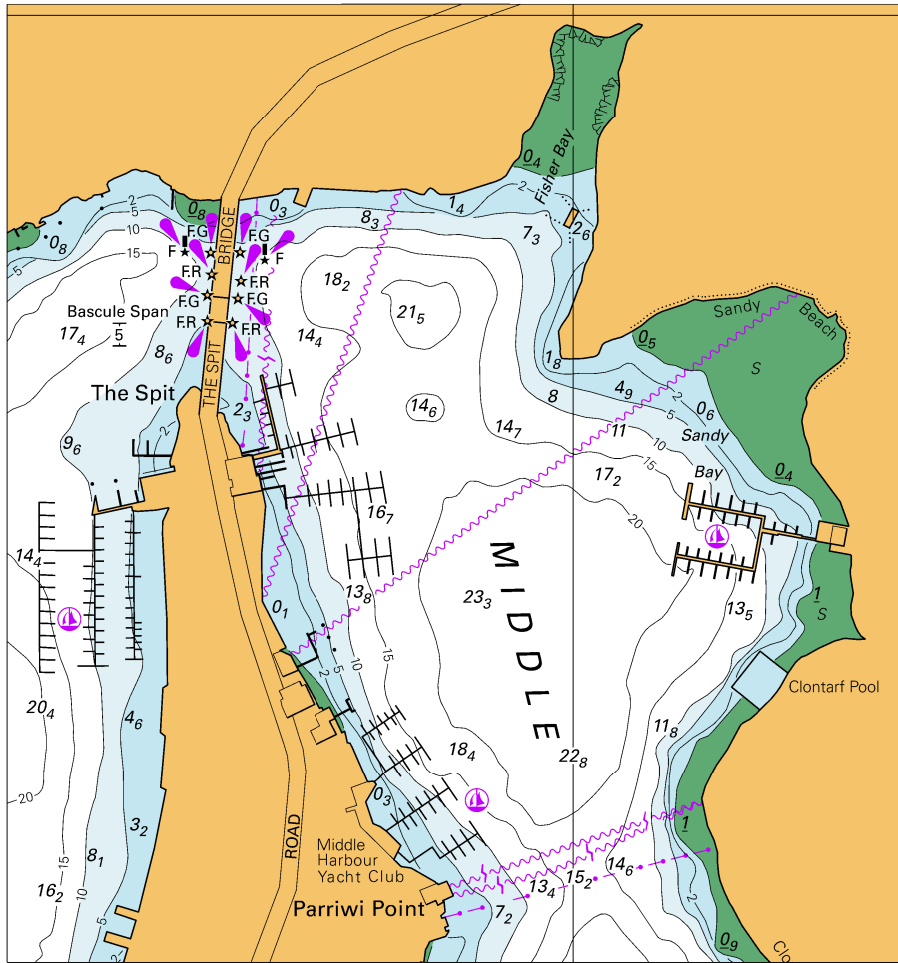


Block for Chart Aus 198

© Commonwealth of Australia 2018

(115.9 x 121.4mm)

To accompany Australian Notice to Mariners 234/2018



Block for Chart Aus 201

© Commonwealth of Australia 2018

(118.8 x 126.8mm)