

*To accompany Australian Notice to Mariners 154/2018*

**DREDGED AREAS**

Depths in dredged areas, although generally maintained, may be less than charted. For the latest information, consult the Harbour Master.

*Note for chart Aus 120*

*To accompany Australian Notice to Mariners 154/2018*

**DREDGED AREAS**

Depths in dredged areas, although generally maintained, may be less than charted. For the latest information, consult the Harbour Master.

*Note for chart Aus 130*

*To accompany Australian Notice to Mariners 154/2018*

**DREDGED AREAS**

Depths in dredged areas, although generally maintained, may be less than charted. For the latest information, consult the Harbour Master.

*Note for chart Aus 134*

*To accompany Australian Notice to Mariners 154/2018*

**DREDGED AREAS**

Depths in dredged areas, although generally maintained, may be less than charted. For the latest information, consult the Harbour Master.

*Note for chart Aus 136*

*To accompany Australian Notice to Mariners 154/2018*

**DREDGED AREAS**

Depths in dredged areas, although generally maintained, may be less than charted. For the latest information, consult the Harbour Master.

*Note for chart Aus 138*

*To accompany Australian Notice to Mariners 154/2018*

**DREDGED AREAS**

Depths in dredged areas, although generally maintained, may be less than charted. For the latest information, consult the Harbour Master.

*Note for chart Aus 140*

*To accompany Australian Notice to Mariners 154/2018*

**DREDGED AREAS**

Depths in dredged areas, although generally maintained, may be less than charted. For the latest information, consult the Harbour Master.

*Note for chart Aus 122*

*To accompany Australian Notice to Mariners 154/2018*

**DREDGED AREAS**

Depths in dredged areas, although generally maintained, may be less than charted. For the latest information, consult the Harbour Master.

*Note for chart Aus 133*

*To accompany Australian Notice to Mariners 154/2018*

**DREDGED AREAS**

Depths in dredged areas, although generally maintained, may be less than charted. For the latest information, consult the Harbour Master.

*Note for chart Aus 135*

*To accompany Australian Notice to Mariners 154/2018*

**DREDGED AREAS**

Depths in dredged areas, although generally maintained, may be less than charted. For the latest information, consult the Harbour Master.

*Note for chart Aus 137*

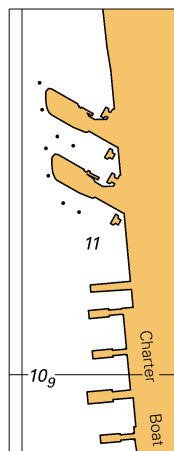
*To accompany Australian Notice to Mariners 154/2018*

**DREDGED AREAS**

Depths in dredged areas, although generally maintained, may be less than charted. For the latest information, consult the Harbour Master.

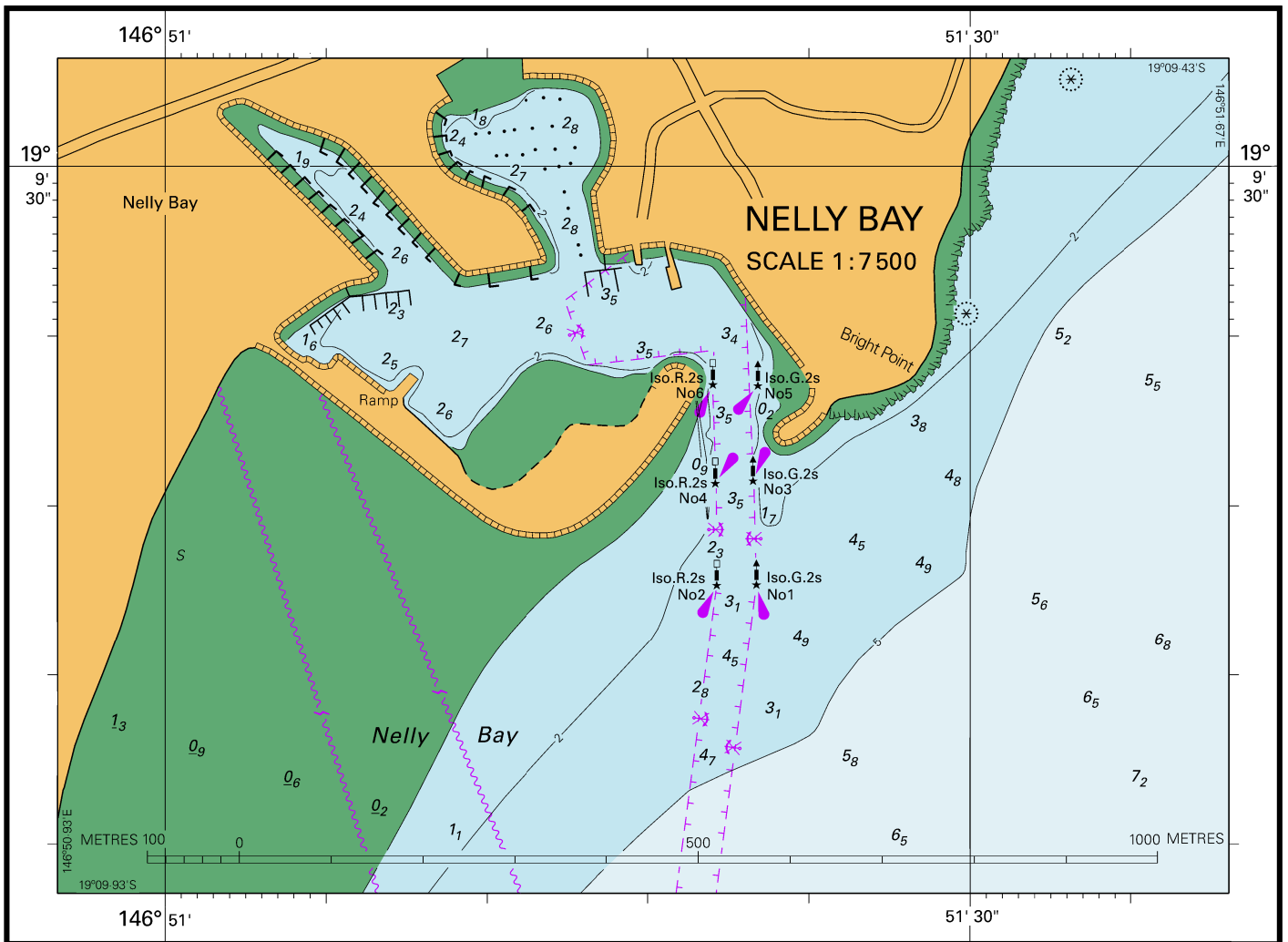
*Note for chart Aus 139*

*To accompany Australian Notice to Mariners 140/2018*



© Commonwealth of Australia 2018  
*Block for Chart Aus 202* (22.4 x 58.6mm)

To accompany Australian Notice to Mariners 144/2018

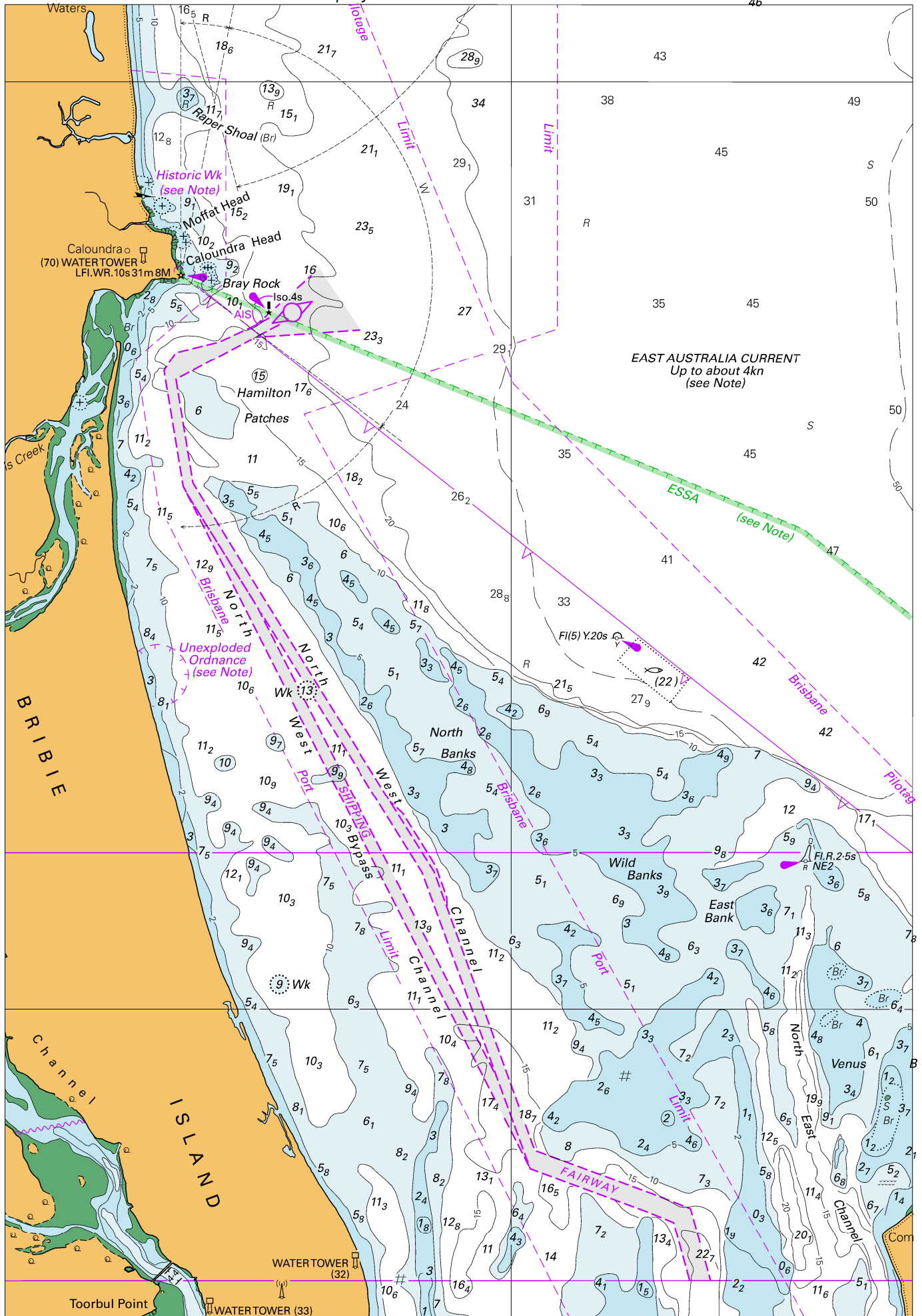


Block for Chart Aus 256

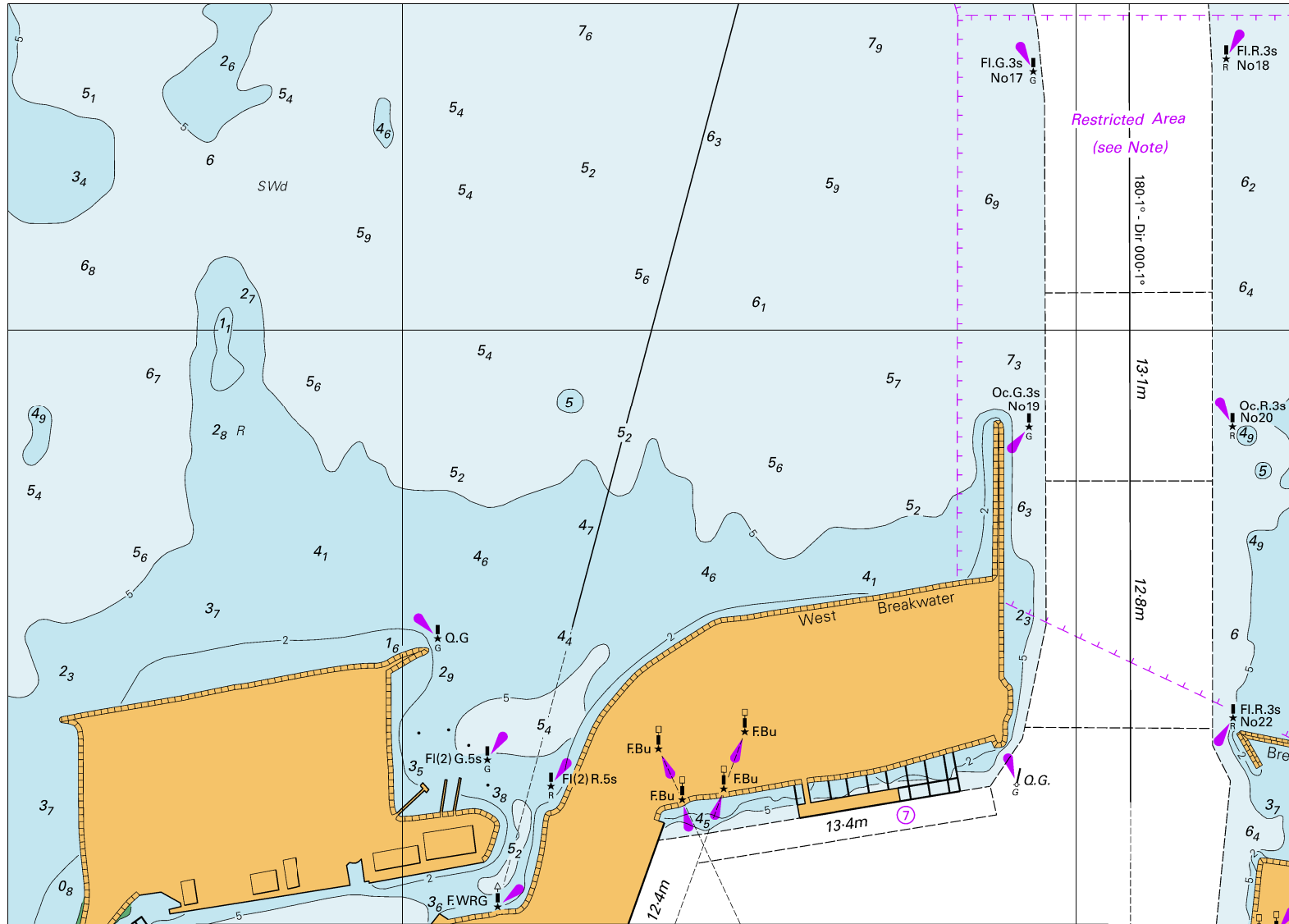
© Commonwealth of Australia 2018

(170.0 x 121.1mm)

(121.6 x 114.1mm)



To accompany Australian Notice to Mariners 150/2018

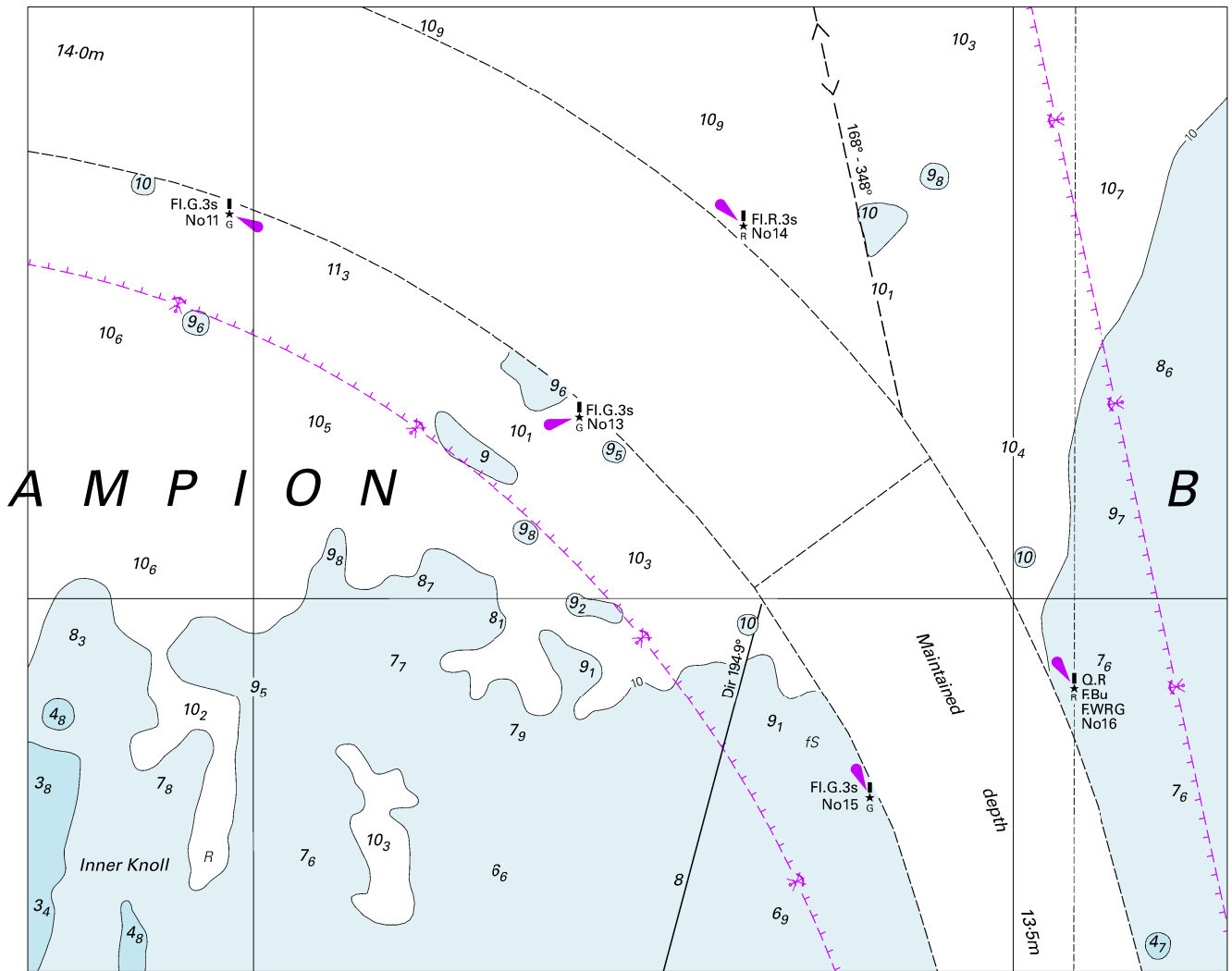


Block A for Chart Aus 81

© Commonwealth of Australia 2018

(207.7 x 148.3mm)

To accompany Australian Notice to Mariners 150/2018



Block B for Chart Aus 81

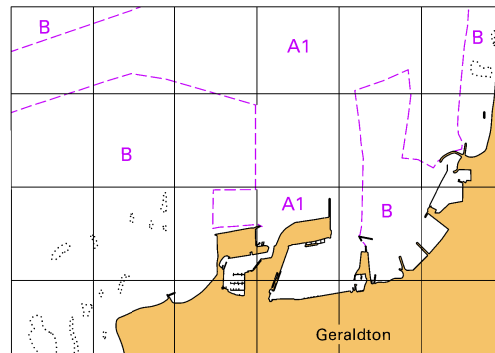
© Commonwealth of Australia 2018

(171.5 x 138.0mm)





*To accompany Australian Notice to Mariners 150/2018*



© Commonwealth of Australia 2018  
*Block D for Chart Aus 81* (65.0 x 46.0mm)