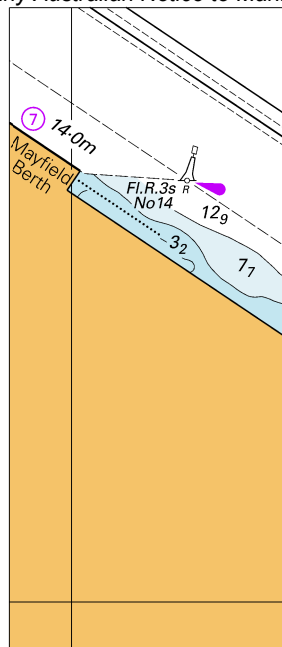
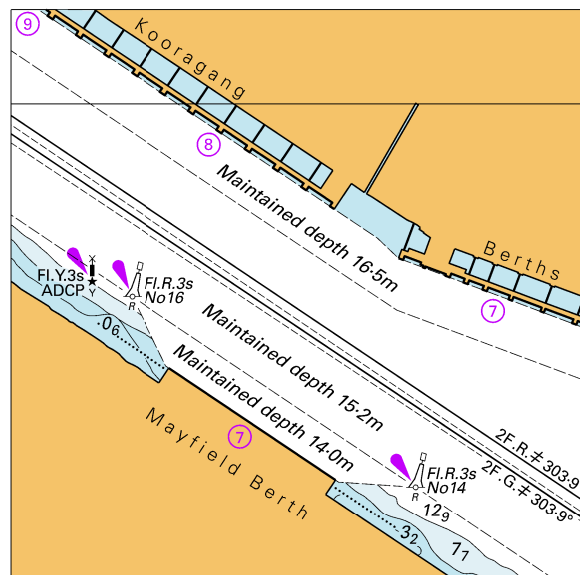


To accompany Australian Notice to Mariners 946/2018



© Commonwealth of Australia 2018
Block A for Chart Aus 208 (37.0 x 84.9mm)

To accompany Australian Notice to Mariners 946/2018

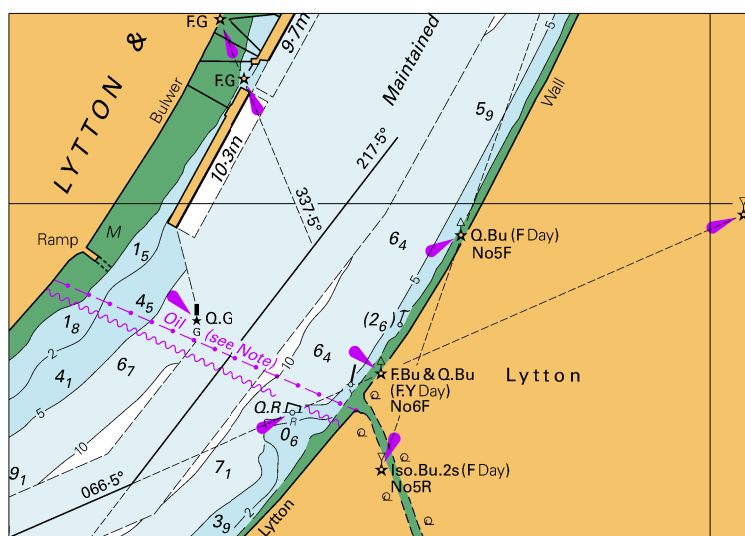


© Commonwealth of Australia 2018

Block B for Chart Aus 208

(76.4 x 75.5mm)

To accompany Australian Notice to Mariners 949/2018

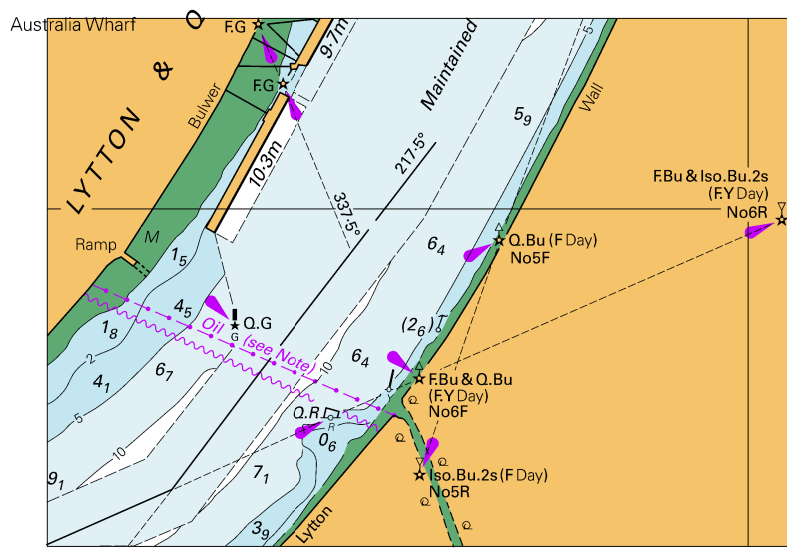


© Commonwealth of Australia 2018

Block for Chart Aus 237

(98.8 x 69.7mm)

To accompany Australian Notice to Mariners 949/2018



© Commonwealth of Australia 2018

Block for Chart Aus 238

(98.8 x 69.7mm)

To accompany Australian Notice to Mariners 950/2018

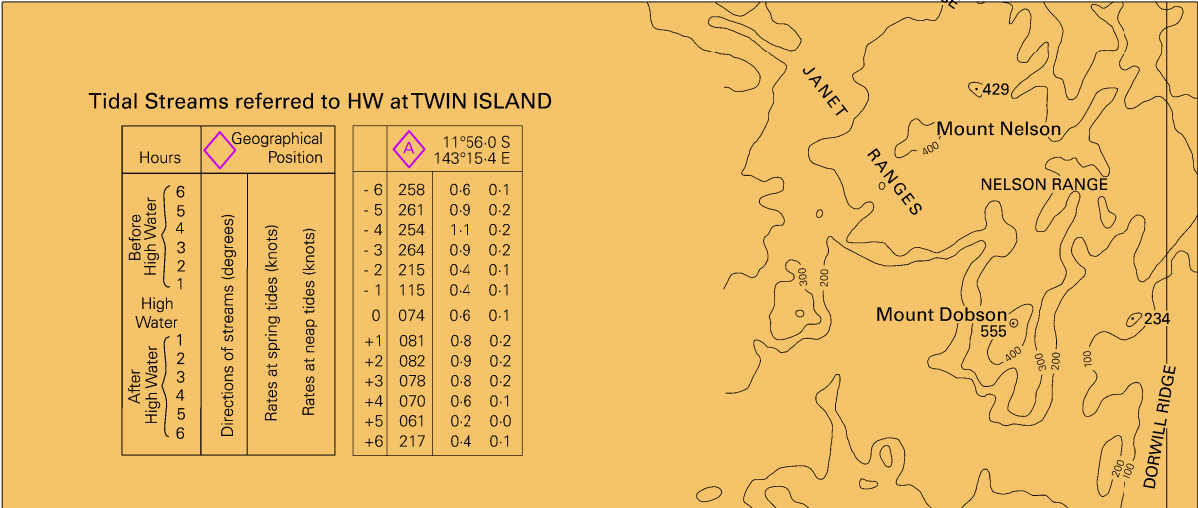
Tidal Streams referred to HW at LEGGATT ISLAND						
Hours		Geographical Position		14°29.5 S 144°56.7 E		
Before High Water	6	Directions of streams (degrees)	Rates at spring tides (knots)	- 6	303	0.1 0.0
	5			- 5	258	0.2 0.0
	4			- 4	252	0.3 0.0
	3			- 3	271	0.3 0.0
	2			- 2	317	0.3 0.0
	1			- 1	300	0.4 0.0
	0			0	090	0.1 0.0
After High Water	1	Directions of streams (degrees)	Rates at spring tides (knots)	+ 1	113	0.3 0.0
	2			+ 2	127	0.4 0.0
	3			+ 3	110	0.3 0.0
	4			+ 4	070	0.1 0.0
	5			+ 5	040	0.1 0.0
	6			+ 6	258	0.1 0.0

© Commonwealth of Australia 2018

Block for Chart Aus 832

(67.3 x 58.6mm)

To accompany Australian Notice to Mariners 950/2018



CORAL AND SOLOMAN SEA

MACKAY

TO

SOLOMON ISLANDS

SCALE 1 : 1 500 000 at lat 23°00'

Depths are in metres.**Heights** are in metres above Mean Higher High Water.**Projection:** Mercator.**SATELLITE DERIVED POSITIONS**

Positions obtained from the Global Positioning System (GPS) in the WGS 1984 Datum can be plotted directly onto this chart.

COASTAL NAVIGATION

This chart has been produced for route planning and ocean transit purposes. Certain lights and other aids to navigation have been omitted. For coastal navigation the largest scale Australian navigation charts must be used.

CURRENTS

For information on ocean currents in the area of this chart, see Admiralty Sailing Directions and Ocean Passages For The World.

REEFREP MANDATORY SHIP REPORTING SYSTEM (SRS)

The ship reporting system area encloses Torres Strait and the Great Barrier Reef. For details and categories of ships required to participate see Australian Seafarers Handbook AHP 20, Australia Pilot Volume III, NP 15 and Admiralty List of Radio Signals Volume 6(4).

When reporting within the REEFREP area, vessels are to call 'REEFVTS' on VHF channels 11 or 14 depending on the ship's position. INMARSAT-C should be used for communicating with REEFVTS when VHF communications are limited.

REEFVTS VHS Contact Channels

AREA	VHF Ch
Inner Route 18°00'S to 20°00'S	14
Inner Route 20°00'S to 22°00'S	11
20°00'S to Sandy Cape	14

MAGNETIC VARIATION CURVES ARE FOR 2017

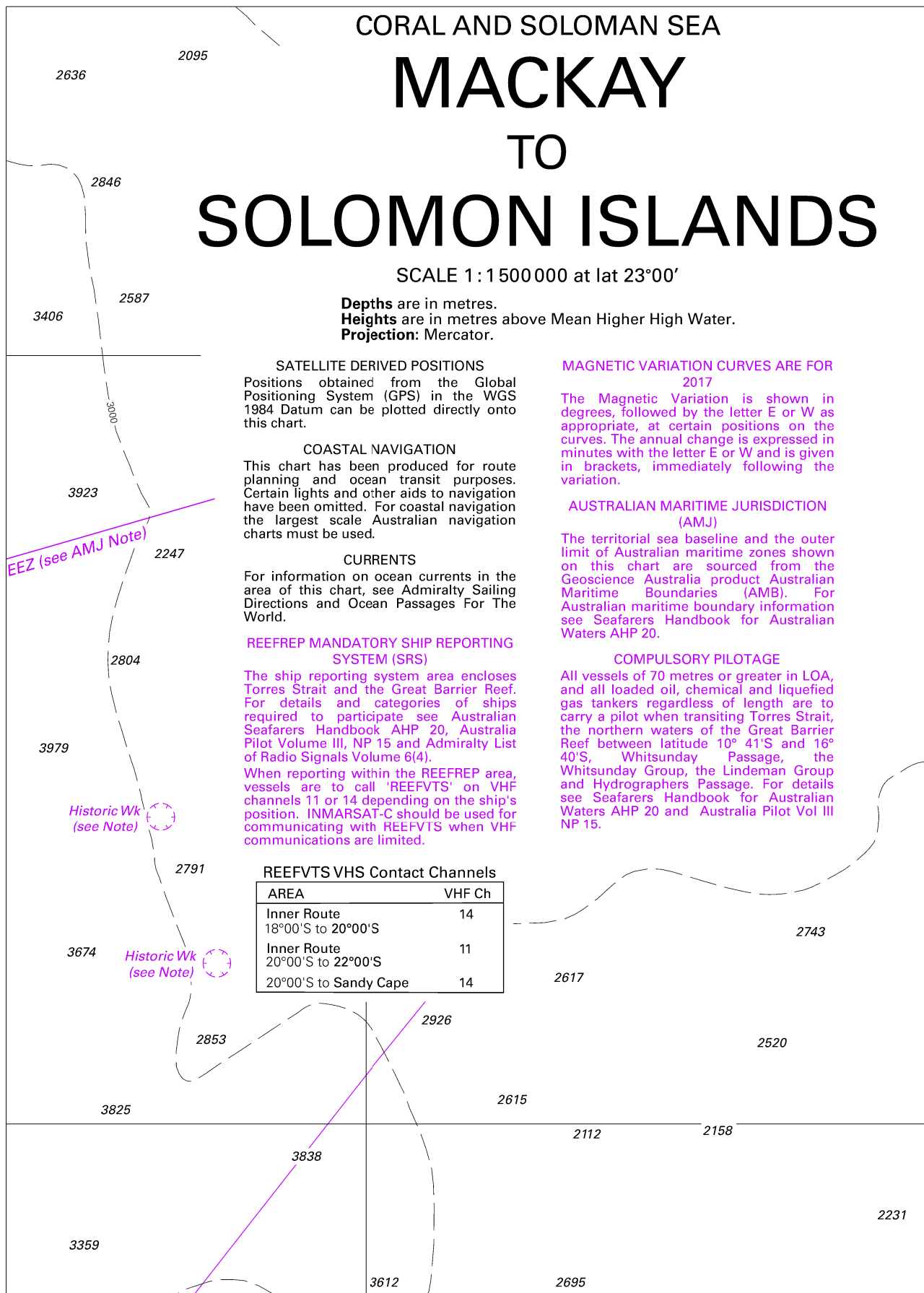
The Magnetic Variation is shown in degrees, followed by the letter E or W as appropriate, at certain positions on the curves. The annual change is expressed in minutes with the letter E or W and is given in brackets, immediately following the variation.

AUSTRALIAN MARITIME JURISDICTION (AMJ)

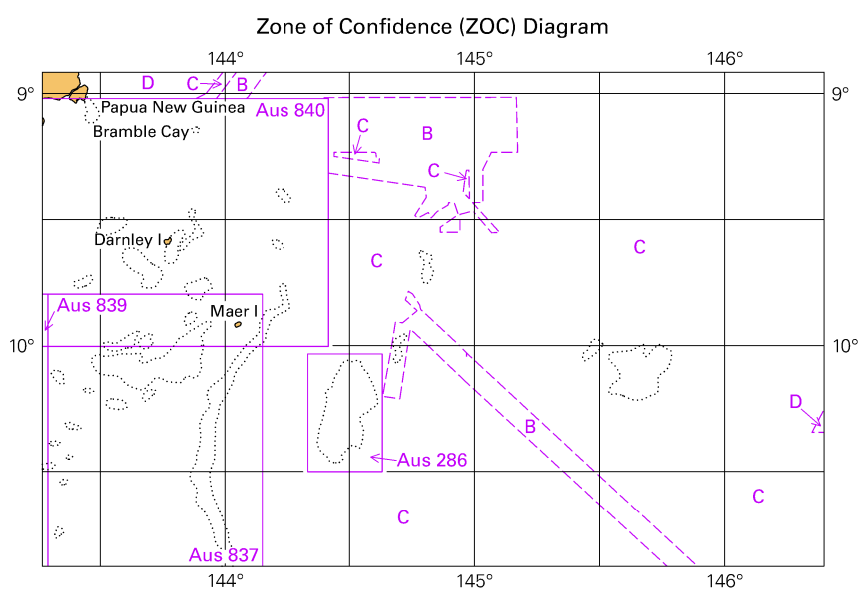
The territorial sea baseline and the outer limit of Australian maritime zones shown on this chart are sourced from the Geoscience Australia product Australian Maritime Boundaries (AMB). For Australian maritime boundary information see Seafarers Handbook for Australian Waters AHP 20.

COMPULSORY PILOTAGE

All vessels of 70 metres or greater in LOA, and all loaded oil, chemical and liquefied gas tankers regardless of length are to carry a pilot when transiting Torres Strait, the northern waters of the Great Barrier Reef between latitude 10° 41'S and 16° 40'S, Whitsunday Passage, the Whitsunday Group, the Lindeman Group and Hydrographers Passage. For details see Seafarers Handbook for Australian Waters AHP 20 and Australia Pilot Vol III NP 15.



To accompany Australian Notice to Mariners 957/2018

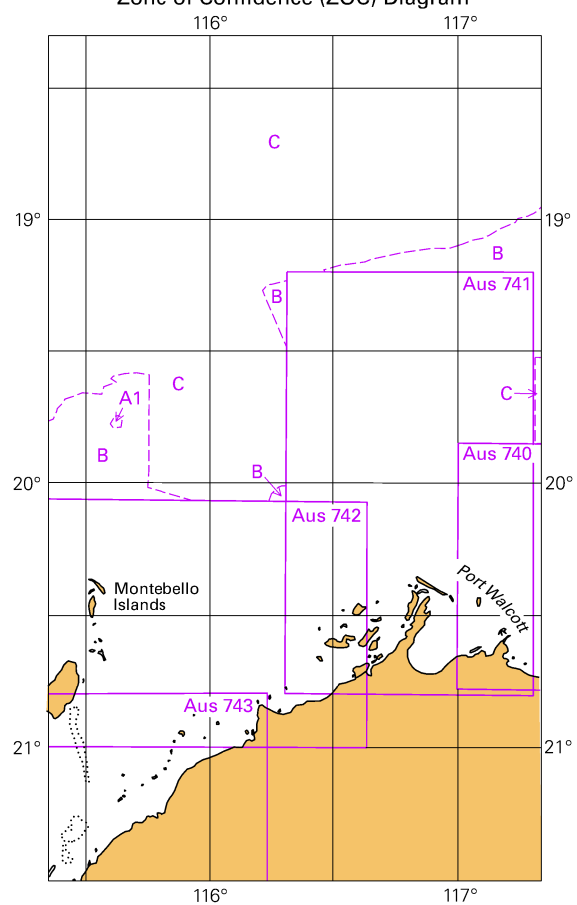


© Commonwealth of Australia 2018

Block for Chart Aus 377

(103.3 x 65.3mm)

To accompany Australian Notice to Mariners 964/2018
Zone of Confidence (ZOC) Diagram



© Commonwealth of Australia 2018

Block for Chart Aus 327

(65.2 x 111.7mm)