

*To accompany Australian Notice to Mariners 765/2018*

PILOT BOARDING AREAS ALPHA, BRAVO  
AND CHARLIE

Vessels entering the Port should not proceed north of the pilot boarding areas without permission of the Vessel Traffic Information Centre on VHF Channel 9, or by the attendant pilot vessel or pilot helicopter transfer, or by telephoning (02) 49 858 292. All vessels not under pilotage should not enter the precautionary area due to vessels manoeuvring in the vicinity for pilot boarding.

*Note for chart Aus 207*

*To accompany Australian Notice to Mariners 777/2018*

HISTORIC WRECK

The site of an historic wreck is protected from unauthorised interference. For details see Seafarers Handbook for Australian Waters AHP 20.

*Note for chart Aus 767*

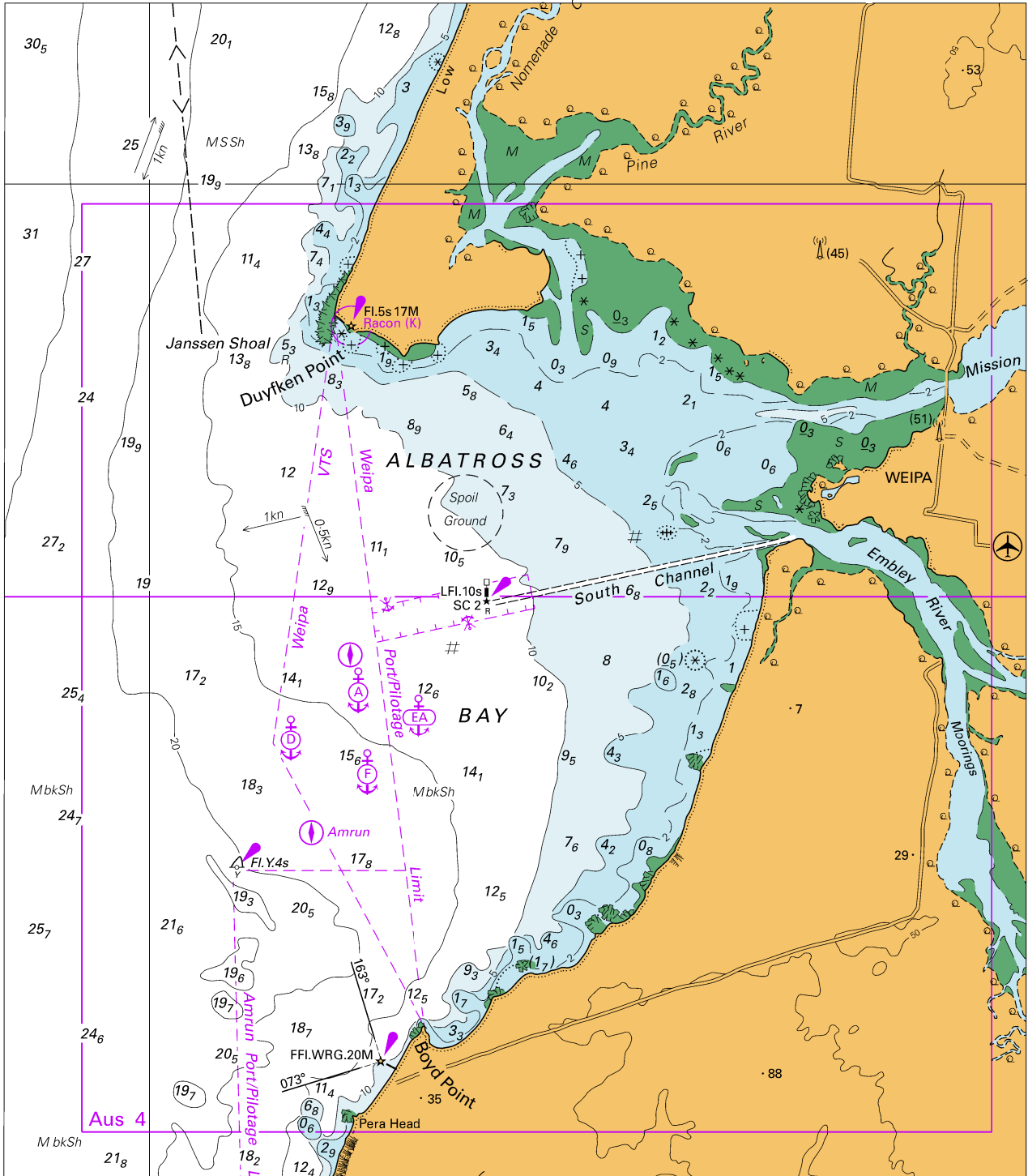
*To accompany Australian Notice to Mariners 777/2018*

HISTORIC WRECK

The site of an historic wreck is protected from unauthorised interference. For details see Seafarers Handbook for Australian Waters AHP 20.

*Note for chart Aus 171*

To accompany Australian Notice to Mariners 770/2018

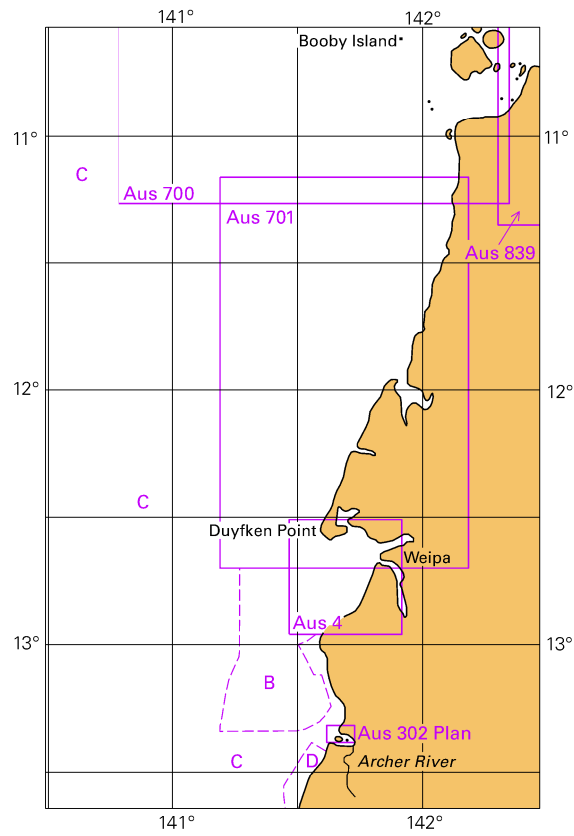


Block A for chart Aus 301

© Commonwealth of Australia 2018

(166.9 x 191.9mm)

To accompany Australian Notice to Mariners 770/2018

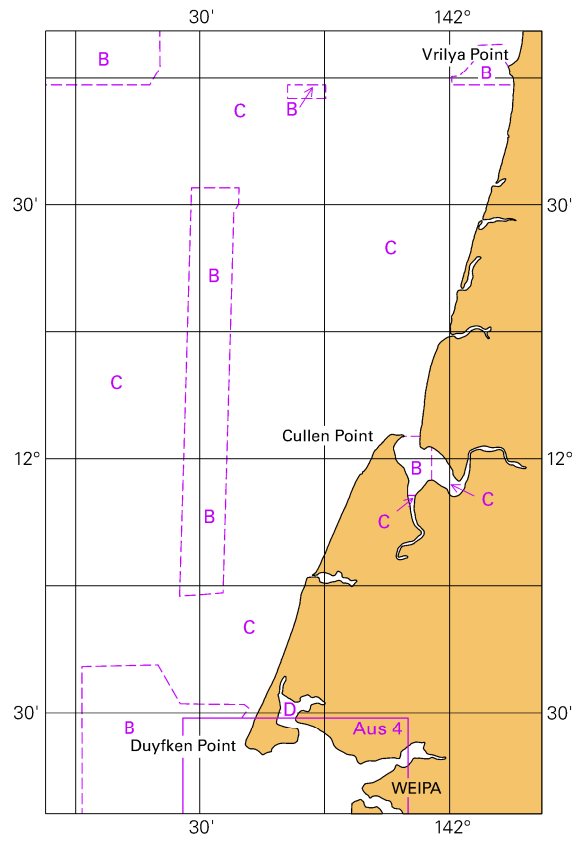


© Commonwealth of Australia 2018

Block B for chart Aus 301

(65.34 x 103.3mm)

To accompany Australian Notice to Mariners 770/2018

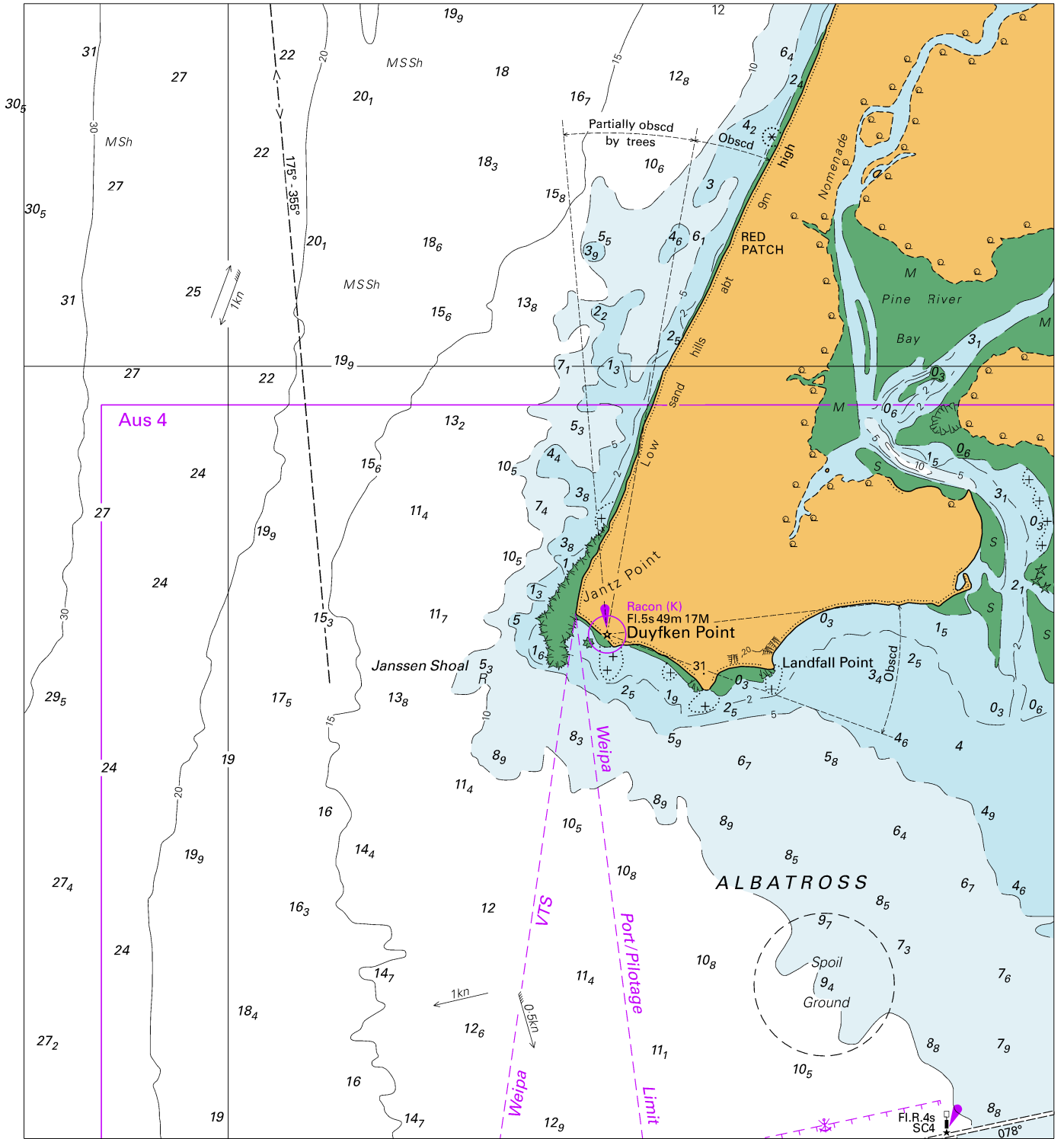


© Commonwealth of Australia 2018

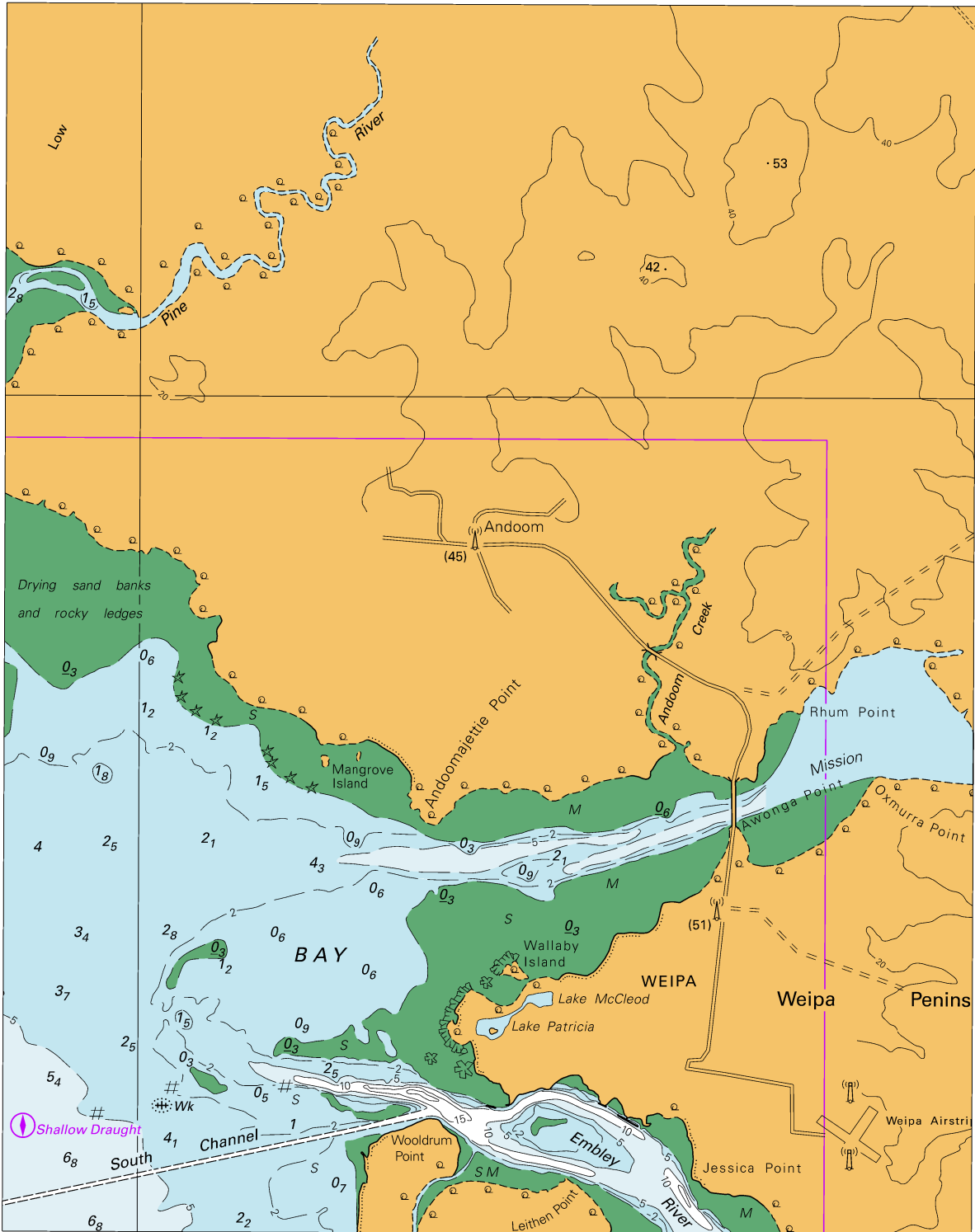
Block C for Chart Aus 701

(65.5 x 103.6mm)

To accompany Australian Notice to Mariners 770/2018



To accompany Australian Notice to Mariners 770/2018

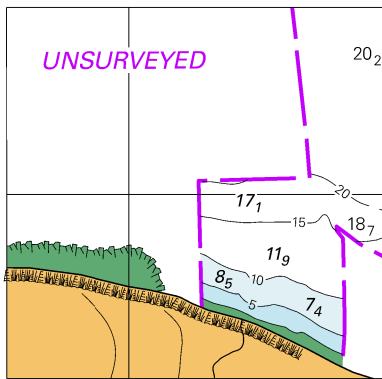


Block B for Chart Aus 701

© Commonwealth of Australia 2018

(155.0 x 196.9mm)

To accompany Australian Notice to Mariners 772/2018



© Commonwealth of Australia 2018  
Block for Chart Aus 129 (50.2 x 49.0mm)

