

To accompany Australian Notice to Mariners 602/2018

ENVIRONMENTALLY SENSITIVE SEA AREA
(ESSA)

Areas of this chart are Environmentally Sensitive Sea Areas (ESSA). Areas within this marine protected area have restrictions on access and activities. For details see Seafarers Handbook for Australian Waters AHP 20.

Note for chart Aus 4074

To accompany Australian Notice to Mariners 624/2018

ENVIRONMENTALLY SENSITIVE SEA AREA
(ESSA)

Areas of this chart are Environmentally Sensitive Sea Areas (ESSA). Areas within this marine protected area have restrictions on access and activities. For details see Seafarers Handbook for Australian Waters AHP 20.

Note for chart Aus 4727

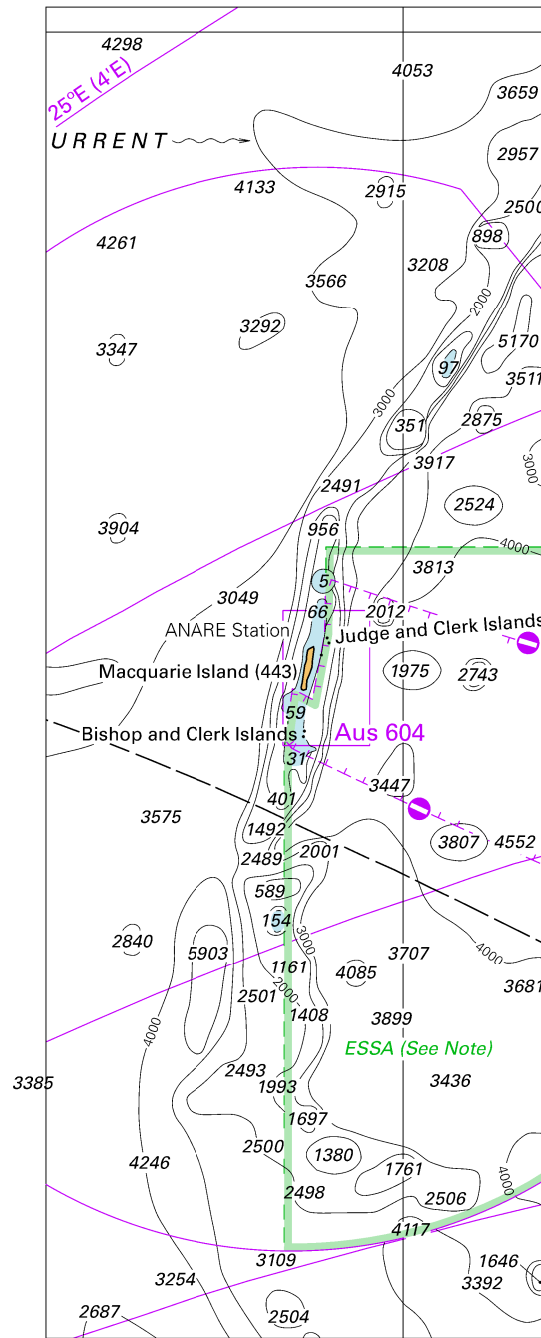
To accompany Australian Notice to Mariners 623/2018

HISTORIC WRECK WITH PROTECTED ZONE

This historic shipwreck lies within a protected or no entry zone as legislated by Commonwealth or State authorities. These zones may cover an area up to a radius of 800 metres from the designated wreck location. Entry into these protected zones requires a permit. For details see Seafarers Handbook for Australian Waters AHP 20.

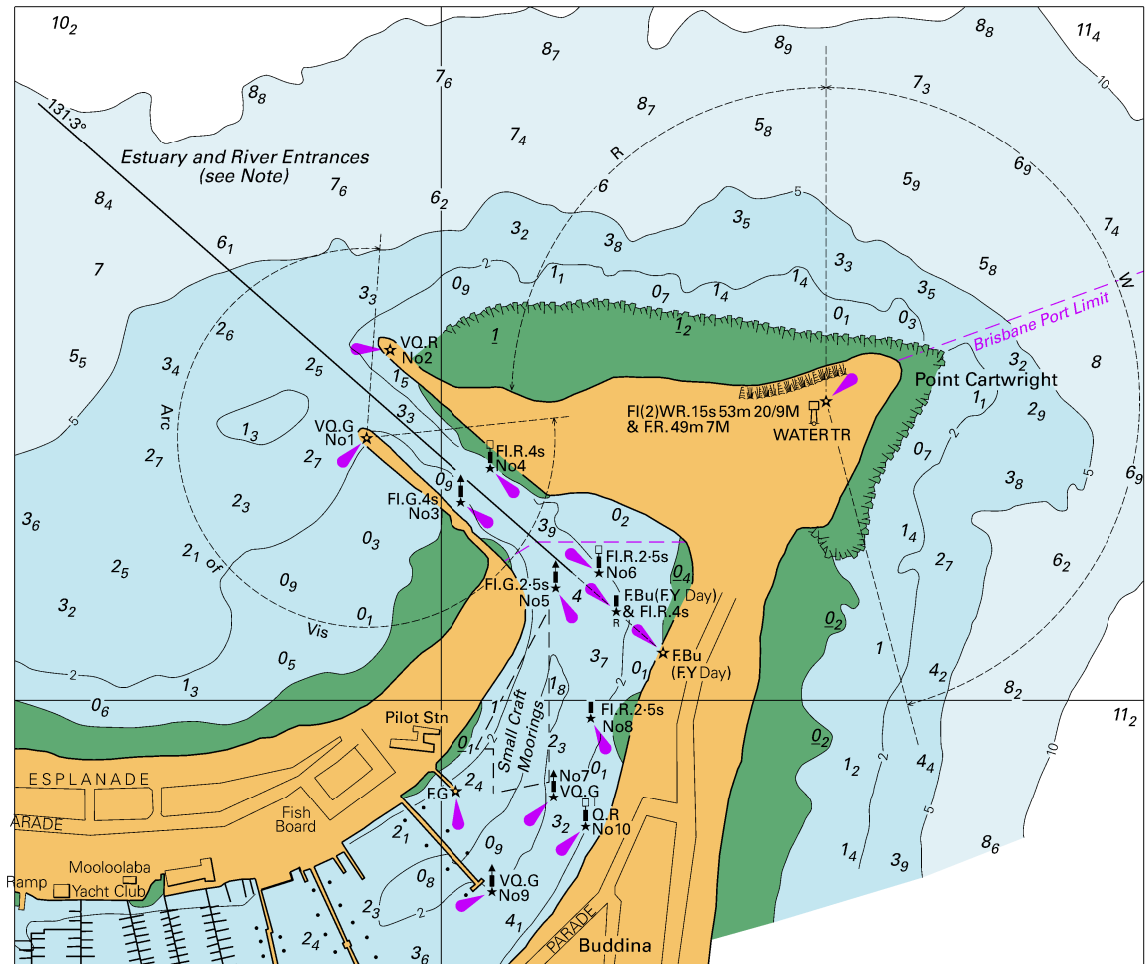
Note for chart Aus 127

To accompany Australian Notice to Mariners 602/2018



© Commonwealth of Australia 2018
 Block for Chart Aus 4074 (66.3 x 176.1mm)

To accompany Australian Notice to Mariners 612/2018

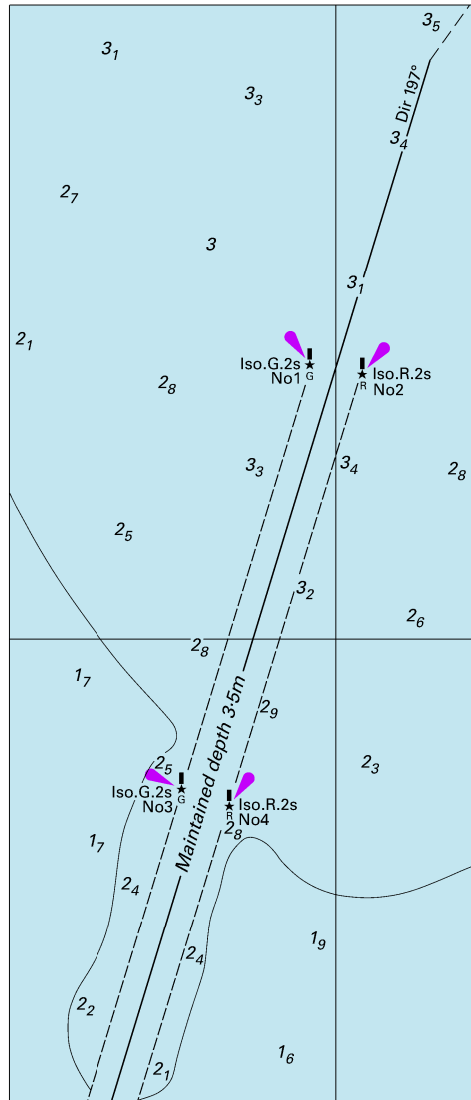


Block for Chart Aus 235

© Commonwealth of Australia 2018

(149.3 x 127.0mm)

To accompany Australian Notice to Mariners 615/2018

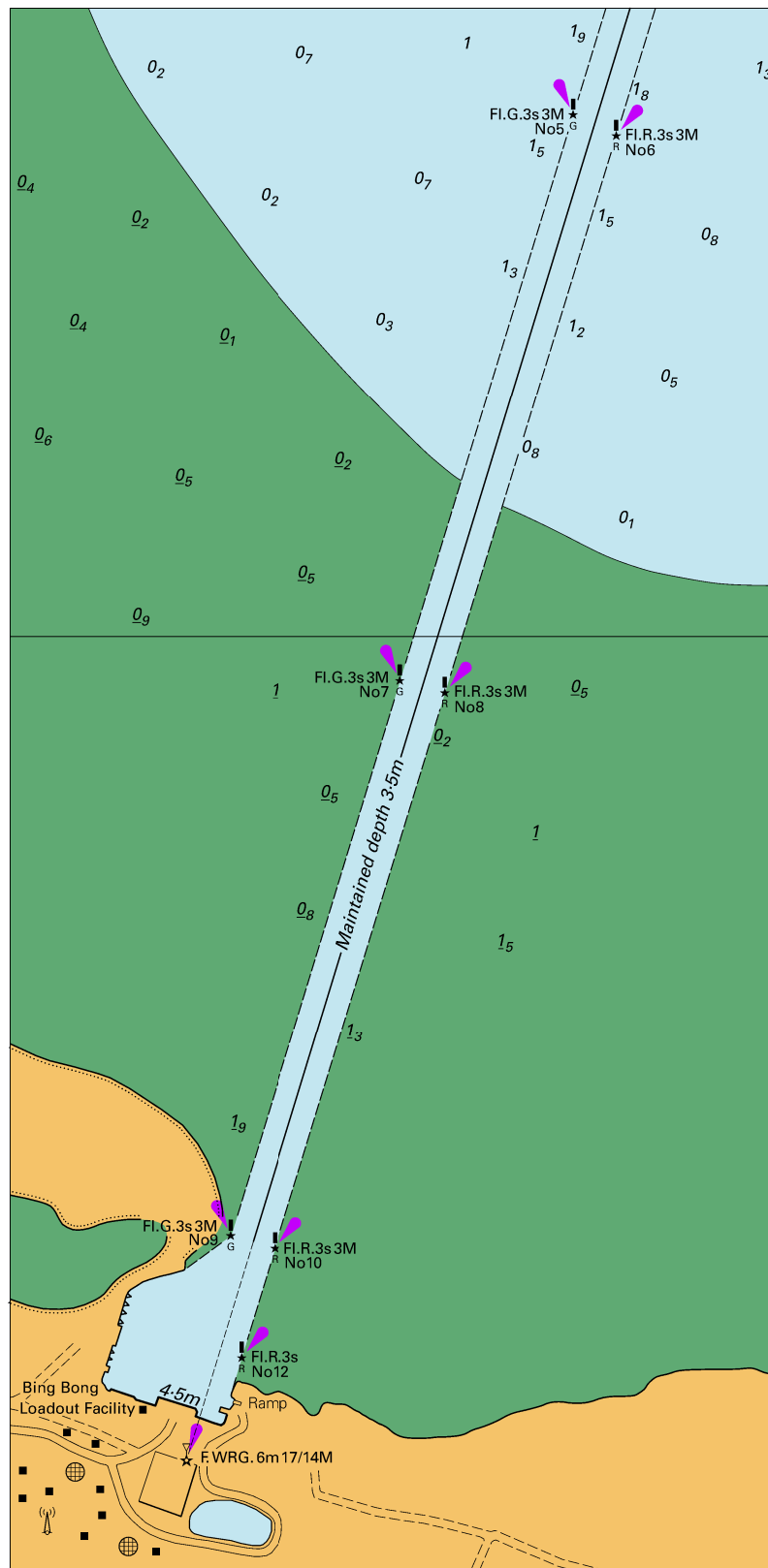


© Commonwealth of Australia 2018

Block B for Chart Aus 13

(62.3 x 145.6mm)

To accompany Australian Notice to Mariners 615/2018

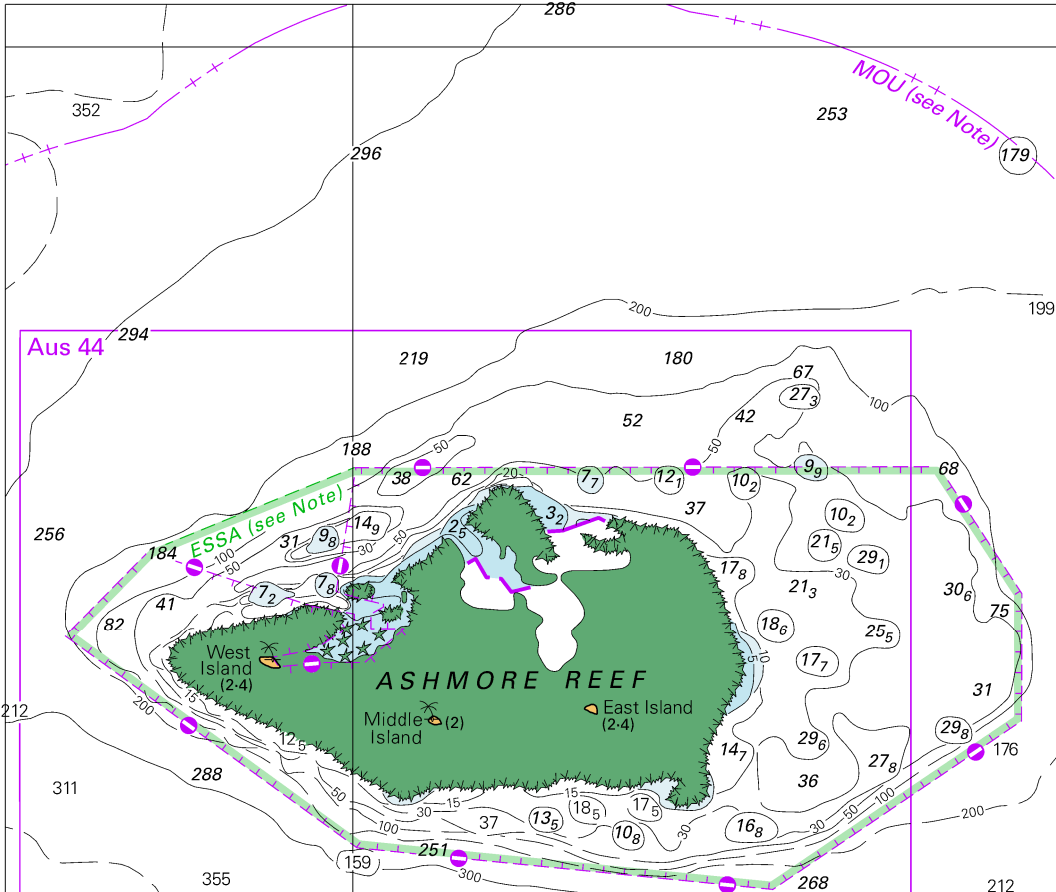


© Commonwealth of Australia 2018

Block A for Chart Aus 13

(104.4 x 213.4mm)

To accompany Australian Notice to Mariners 622/2018

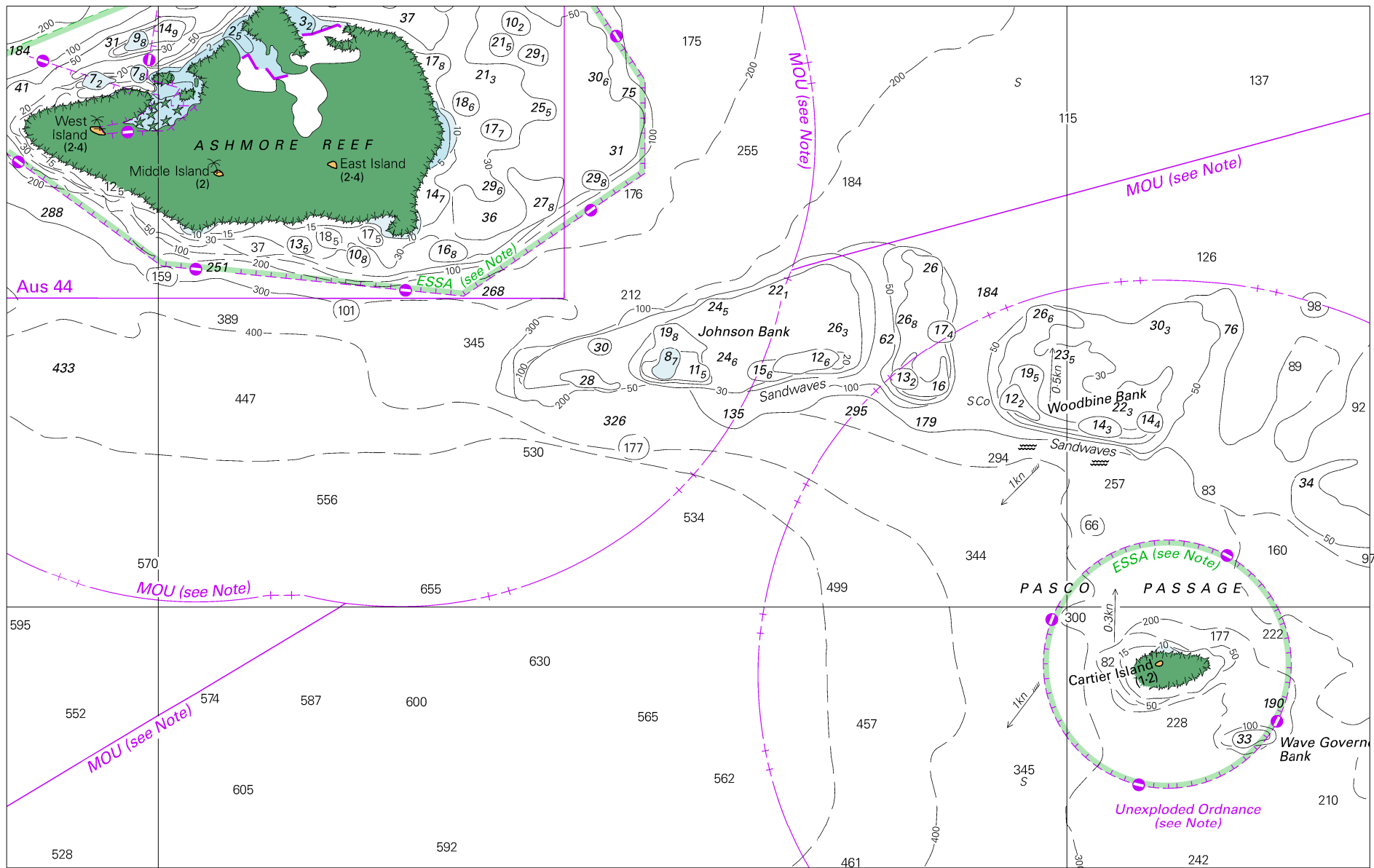


Block for Chart Aus 317

© Commonwealth of Australia 2018

(138.9 x 117.5mm)

To accompany Australian Notice to Mariners 622/2018

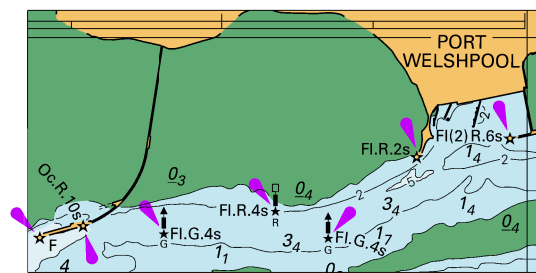


Block for Chart Aus 319

© Commonwealth of Australia 2018

(247.7 x 156.6mm)

To accompany Australian Notice to Mariners 625/2018



© Commonwealth of Australia 2018
 Block A for Chart Aus 182 (68.4 x 34.6mm)

To accompany Australian Notice to Mariners 625/2018

