

To accompany Australian Notice to Mariners 552/2018

TWO-WAY ROUTE

The Two-Way Route shown on this chart is a ships routing measure that has been adopted by the IMO.

The route keeps ships clear of charted hazards in proximity to its limits and assists in safe and efficient navigation.

In accordance with the International Convention for Safety of Life at Sea, 1974 ships are to maintain a continuous listening watch on VHF channel 16 when practicable. Additionally, ships should note the requirements for reporting to REEFVTS.

The International Regulations for Preventing Collisions at Sea, 1972 apply to all vessels whether navigating within or outside the Two-Way Route. Where safe and practicable, vessels are advised to keep to starboard of the routes centreline.

Note for chart Aus 255

To accompany Australian Notice to Mariners 553/2018

HISTORIC WRECK

The site of an historic wreck is protected from unauthorised interference. For details see Seafarers Handbook for Australian Waters AHP 20.

Note for chart Aus 256

Botany Bay, NSW (34° 00'S, 151° 13'E)	
UN/LOCODE: AU BTB	
Paper charts:	Aus 196, 197, 198
AusENC cells:	AU5198P0, AU434151, AU435151
Security Regulated Port:	Yes
Port Authority:	Port Authority of NSW
Website:	www.portauthoritynsw.com.au
Email:	enquiries@portauthoritynsw.com.au
Telephone:	+61 2 9296 4999
Sydney VTS	
Telephone:	+61 2 9296 4999
Email:	VTs@portauthoritynsw.com.au
Pilotage:	Compulsory
Pilot	
Telephone:	+61 2 9296 4999
Fax:	+61 2 9296 4744
Email:	pilotenquiries@portauthoritynsw.com.au
Ordering:	Through local agent
Pilot Boarding Ground:	34° 01.02'S, 151° 18.88'E
Communication:	"Sydney VTS"
Call up, emergencies:	VHF Ch 16
Sydney VTS:	VHF Ch 12
Pilot Boarding:	VHF Ch 06
Tugs:	VHF Ch 68, 69
Notice of ETA:	60 hours
For more information:	www.portauthoritynsw.com.au

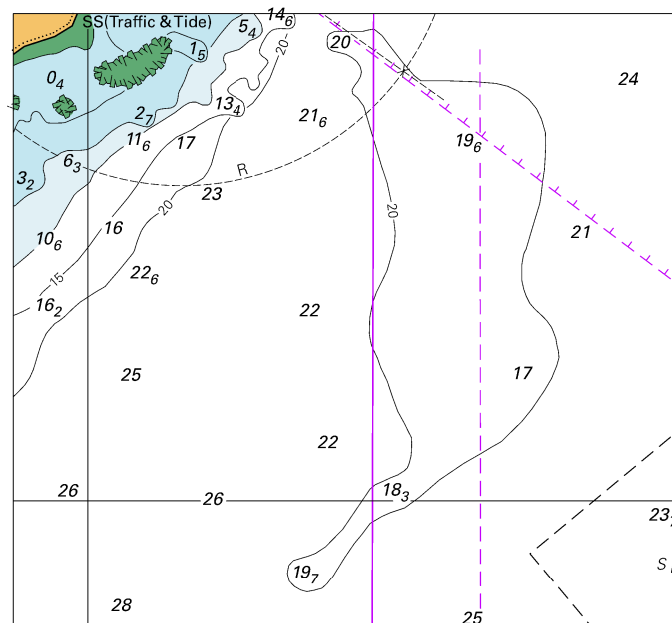
Page 242

Sydney (Port Jackson) , NSW (33° 51'S, 151° 12'E)	
UN/LOCODE: AU SYD	
Paper charts:	Aus 197, 200, 201, 202, 203
AusENC cells:	AU5200PE, AU5200PW, AU5809P2 AU434151
Security Regulated Port:	Yes
Port Authority:	Port Authority of NSW
Website:	www.portauthoritynsw.com.au
Email:	enquiries@portauthoritynsw.com.au
Telephone:	+61 2 9296 4999
Sydney VTS	
Telephone:	+61 2 9296 4999
Fax:	+61 2 9247 7804
Email:	VTs@portauthoritynsw.com.au
Pilotage:	Compulsory >30m LOA
Pilot	
Telephone:	+61 2 9296 4999
Fax:	+61 2 9296 4744
Email:	pilotenquiries@portauthoritynsw.com.au
Ordering:	Through Agent
Pilot Boarding Grounds:	34° 01.02'S, 151° 18.88'E 33° 50.05'S, 151° 21.68'E
Communication:	"Sydney VTS"
Call up, emergencies:	VHF Ch 16
VTS:	VHF Ch 13
Pilot Boarding:	VHF Ch 06
Tugs:	VHF Ch 08, 10, 72
Notice of ETA:	60 hours
For more information:	www.portauthoritynsw.com.au

Page 243

© Commonwealth of Australia 2018
Block for Chart Aus 4074 (66.3 x 176.1mm)

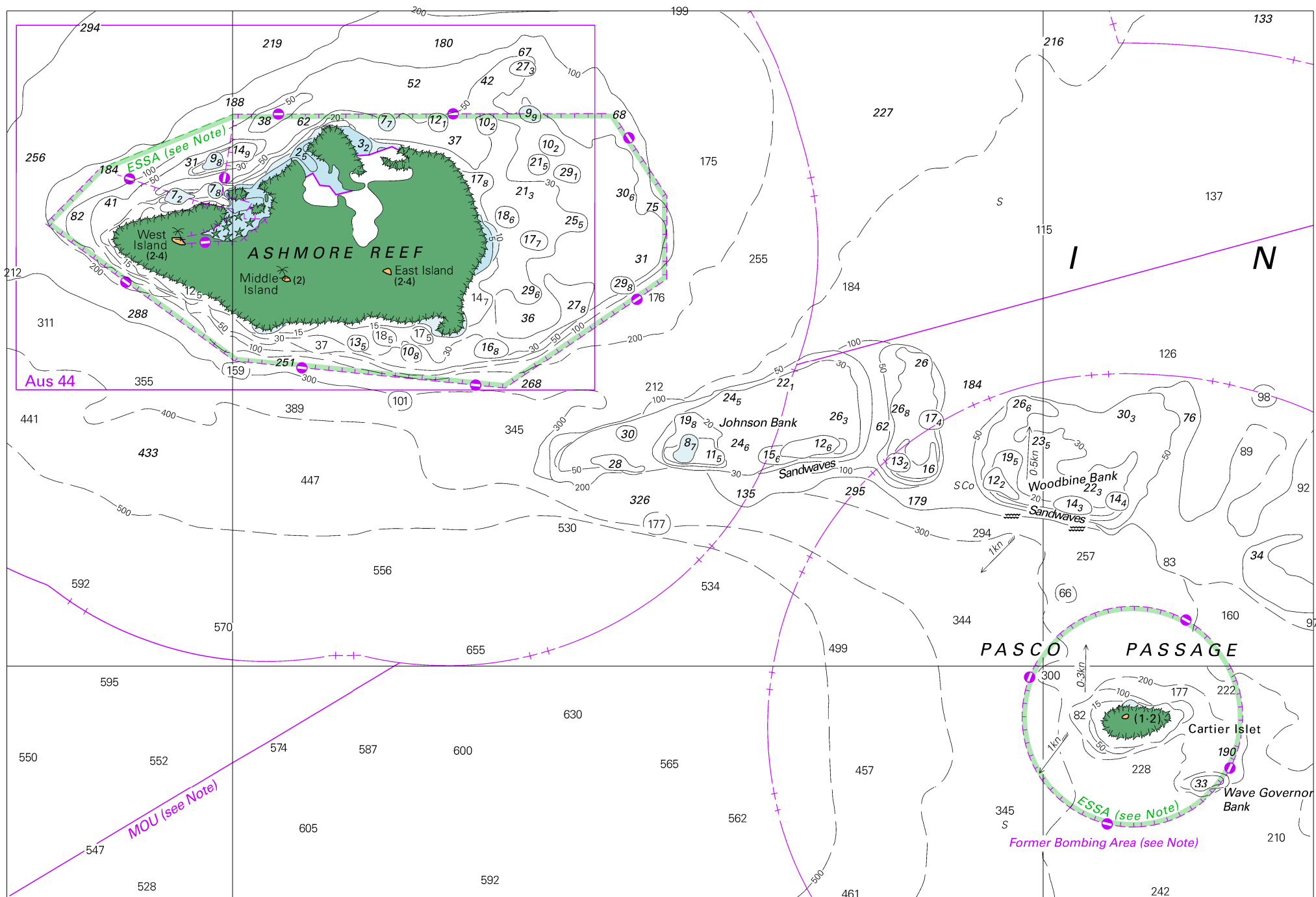
To accompany Australian Notice to Mariners 551/2018



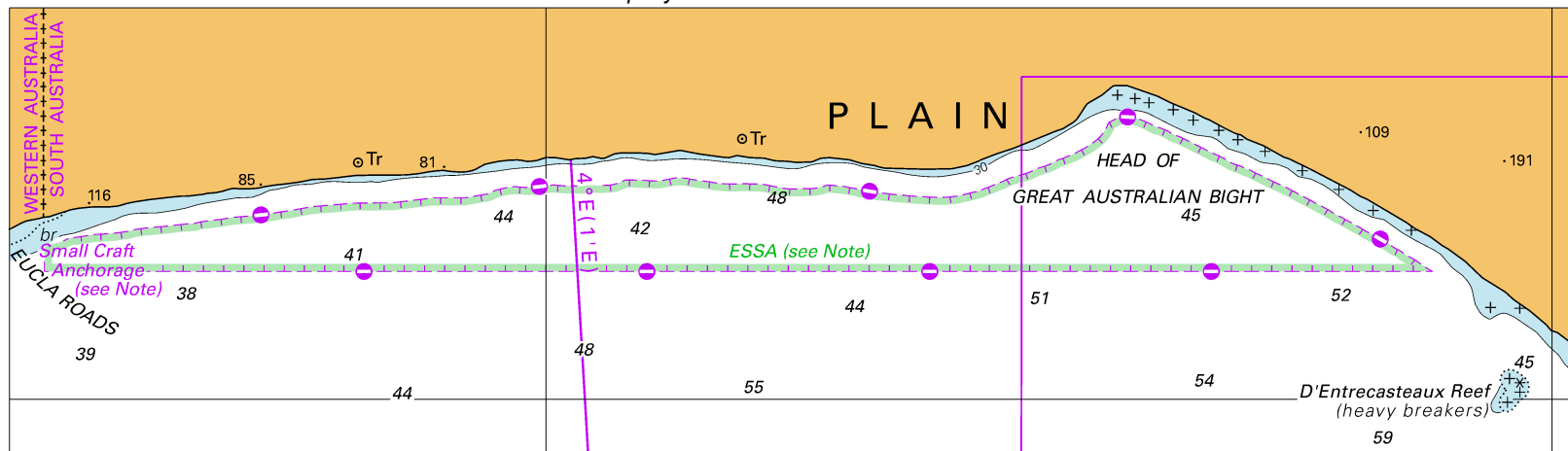
© Commonwealth of Australia 2018

Block for Chart Aus 207

(88.3 x 81.2mm)



To accompany Australian Notice to Mariners 566/2018

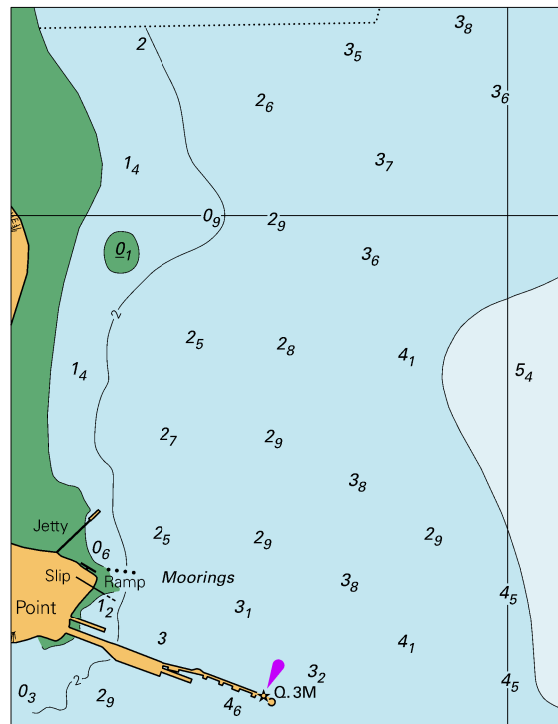


Block for Chart Aus 4727

© Commonwealth of Australia 2018

(213.0 x 60.7mm)

To accompany Australian Notice to Mariners 568/2018

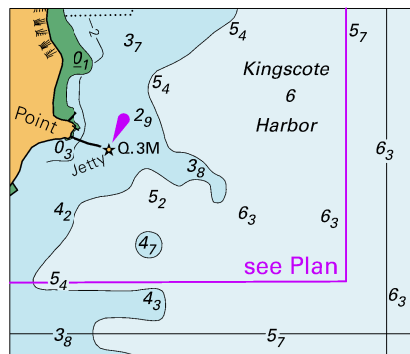


© Commonwealth of Australia 2018

Block A for Chart Aus 129

(73.9 x 95.3mm)

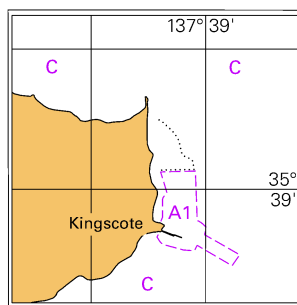
To accompany Australian Notice to Mariners 568/2018



© Commonwealth of Australia 2018

Block B for Chart Aus 129 (53.9 x 45.8mm)

To accompany Australian Notice to Mariners 568/2018



© Commonwealth of Australia 2018

Block C for Chart Aus 129 (38.1 x 37.9mm)