



22 September 2017

Edition 19

AUSTRALIAN NOTICES TO MARINERS

Notices 765 - 812

Published fortnightly by the Australian Hydrographic Service



Australian Notices to Mariners are the authority for correcting charts and publications published by the Australian Hydrographic Service covering Australia, Papua New Guinea, Solomon Islands, Australian Antarctic Territory and Timor-Leste.

Commodore B.K. BRACE RAN
Hydrographer of Australia

SECTIONS.

- I. **Australian Notices to Mariners, including blocks and notes.**
- II. **Hydrographic Reports.**
- III. **Navigational Warnings.**

SUPPLEMENTS.

- I. **Tracings**
- II. **Cumulative List of Australian Notices to Mariners.**
- III. **Cumulative List of Temporary and Preliminary Australian Notices to Mariners.**
- IV. **Temporary and Preliminary Notices in force.**
- V. **Amendments to Admiralty List of Lights and Fog Signals (Vol K), Radio Signals (NP 281(2), 282, 283(2), 285, 286(4)) and Sailing Directions (NP 9, 13, 14, 15, 33, 34, 35, 36, 39, 44, 51, 60, 61, 62, 100, 136).**

© Commonwealth of Australia 2017

This work is copyright. Apart from any use permitted under the Copyright Act 1968, no part may be reproduced by any process, adapted, communicated or commercially exploited without prior written permission from The Commonwealth represented by the Australian Hydrographic Service.

IMPORTANT NOTICE

This edition of Notices to Mariners includes all significant information affecting AHS products which the AHS has become aware of since the last edition. All reasonable efforts have been made to ensure the accuracy and completeness of the information, including third party information, on which these updates are based. The AHS regards third parties from which it receives information as reliable, however the AHS cannot verify all such information and errors may therefore exist. The AHS does not accept liability for errors in third party information.

GENERAL INSTRUCTIONS

The substance of these notices should be inserted on the charts affected.

Bearings are referred to the true compass and are reckoned clockwise from North; those relating to lights are given as seen by an observer from seaward.

Positions quoted in notices relate to WGS84 which is the horizontal datum for all charts produced by the Australian Hydrographic Service.

The range quoted for a light is its nominal range.

Depths are with reference to the chart datum of each chart. Heights are above mean high water springs or mean higher high water, as appropriate.

The capital letter (P) or (T) after the number of any notice denotes a preliminary or temporary notice respectively, which are contained separately at the end of the permanent notices.

REPORTING OF DANGERS

Mariners are particularly requested to notify the AUSTRALIAN HYDROGRAPHIC SERVICE, Locked Bag 8801 Wollongong, NSW 2500 (Fax 02-4223 6599, e-mail datacentre@hydro.gov.au or, alternatively by filling in and submitting the [Hydrographic Notes](#) forms located on the web site – www.hydro.gov.au), immediately on the discovery of new dangers or suspected dangers to navigation. For changes or defects in aids to navigation notify AusSAR (Fax 02-6230 6868 or email rccaus@amsa.gov.au).

AUTHORISED USE

Copies of Australian notices are available free of charge from the Australian Hydrographic Service (AHS) website (www.hydro.gov.au) and through the eNotices (email) service (www.hydro.gov.au/enotices/enotices.htm).

Individual Notices may be copied for the purpose of inserting Notice substance on official charts and publications. Paper copies may be printed by chart agents and distributed to customers on a cost recovery basis. Participating chart agents are listed on the AHS website as providing a 'Paper Notices to Mariners' service (www.hydro.gov.au/webapps/jsp/agents/agents-list.jsp). Copies of the notices may not be sold for profit without prior written agreement.

NUMERICAL INDEX OF NOTICES TO MARINERS

Edition No 19

Notices	Aus Chart, INT Chart, ENC Cell, AHP, BA Pubs
765	Aus 257, 399, 4621, 4622, 4635, INT 621, 622, 635
766	Amendment to Australian National Tide Tables 2018
767	Amendment to Australian National Tide Tables 2017
768	Summer time
769	Aus 812, 813
770	Aus 200, 201
771	Aus 194
772	Aus 220
773	Aus 812, 813
774	Aus 253
775	Aus 244, 245, 246, 271
776	Aus 230
777	Aus 835
778	Aus 834
779	Aus 621, 622
780	Aus 59, 60
781	Aus 326, 327, 740, 741
782	Aus 332, 4725, INT 725
783	Aus 141
784	Aus 143, 157
785	Aus 150
786	Aus 150, 151, 152
787	Aus 167
788	Aus 173, 795
789(T)	Aus 200, 202
790(T)	Aus 220
791(T)	Aus 249, 251, 823, 824
792(T)	Aus 242
793(T)	Aus 242
794(T)	Aus 244, 245, 246, 247, 248, 249, 260, 261, 265, 271, 272, 367, 490, 818, 819, 820, 821, 822, 823, 824, 825, 4620, 4621, 4635, INT 620, 621, 635
795(T)	Aus 244, 245, 271
796(T)	Aus 252, 253, 824, 825
797(T)	Aus 235, 236, 237, 238, 814, 815
798(T)	Aus 252, 253, 824, 825
799(T)	Aus 256, 827
800(T)	Aus 260, 261, 367, 822
801(T)	Aus 248, 367, 820, 822
802(T)	Aus 248, 367, 820, 822
803(T)	Aus 260, 367, 822
804(T)	Aus 253, 269
805(T)	Aus 20, 722
806(T)	Aus 15
807(T)	Aus 314, 318, 319, 320
808(T)	Aus 319, 320, 4721, 4722, INT 721, 722
809(T)	Aus 57, 327, 741, 742
810(T)	Aus 319, 320, 4721, 4722, INT 721, 722
811(T)	Aus 64, 69, 743
812(T)	Aus 327

NUMERICAL INDEX OF CHARTS AFFECTED

Edition No 19

Aus Chart	Notices
Aus 15	806(T)
Aus 20	805(T)
Aus 57	809(T)
Aus 59	780
Aus 60	780
Aus 64	811(T)
Aus 69	811(T)
Aus 141	783
Aus 143	784
Aus 150	785, 786
Aus 151	786
Aus 152	786
Aus 157	784
Aus 167	787
Aus 173	788
Aus 194	771
Aus 200	770, 789(T)
Aus 201	770
Aus 202	789(T)
Aus 220	772, 790(T)
Aus 230	776
Aus 235	797(T)
Aus 236	797(T)
Aus 237	797(T)
Aus 238	797(T)
Aus 242	792(T), 793(T)
Aus 244	775, 794(T), 795(T)
Aus 245	775, 794(T), 795(T)
Aus 246	775, 794(T)
Aus 247	794(T)
Aus 248	794(T), 801(T), 802(T)
Aus 249	791(T), 794(T)
Aus 251	791(T)
Aus 252	796(T), 798(T)
Aus 253	774, 796(T), 798(T), 804(T)
Aus 256	799(T)
Aus 257	765
Aus 260	794(T), 800(T), 803(T)
Aus 261	794(T), 800(T)
Aus 265	794(T)
Aus 269	804(T)
Aus 271	775, 794(T), 795(T)
Aus 272	794(T)
Aus 314	807(T)
Aus 318	807(T)
Aus 319	807(T), 808(T), 810(T)
Aus 320	807(T), 808(T), 810(T)
Aus 326	781
Aus 327	781, 809(T), 812(T)
Aus 332	782
Aus 367	794(T), 800(T), 801(T), 802(T), 803(T)
Aus 399	765
Aus 490	794(T)
Aus 621	779

Aus Chart	Notices
Aus 622	779
Aus 722	805(T)
Aus 740	781
Aus 741	781, 809(T)
Aus 742	809(T)
Aus 743	811(T)
Aus 795	788
Aus 812	769, 773
Aus 813	769, 773
Aus 814	797(T)
Aus 815	797(T)
Aus 818	794(T)
Aus 819	794(T)
Aus 820	794(T), 801(T), 802(T)
Aus 821	794(T)
Aus 822	794(T), 800(T), 801(T), 802(T), 803(T)
Aus 823	791(T), 794(T)
Aus 824	791(T), 794(T), 796(T), 798(T)
Aus 825	794(T), 796(T), 798(T)
Aus 827	799(T)
Aus 834	778
Aus 835	777
Aus 4620	794(T)
Aus 4621	765, 794(T)
Aus 4622	765
Aus 4635	765, 794(T)
Aus 4721	808(T), 810(T)
Aus 4722	808(T), 810(T)
Aus 4725	782

INT Chart	Notices
INT 620	794(T)
INT 621	765, 794(T)
INT 622	765
INT 635	765, 794(T)
INT 721	808(T), 810(T)
INT 722	808(T), 810(T)
INT 725	782

765 AUSTRALIA - Products - New Charts, New Editions, Withdrawn Charts

Australian Hydrographic Service

New Charts

Chart	Title and Geographical limits	Scale	Publication Date	Remarks
NIL				

New Electronic Navigation Chart (Aus ENC)

Cell Name	Title	Publication Date	Remarks
NIL			

New Editions and Withdrawn Charts

Chart	Title	Scale	Publication Date	Remarks
Aus 399 Edition 2	South Pacific Ocean - Bougainville Island	1:300 000	22 September 2017	General updating due to adoption of Solomon Islands charting. Chart Aus 399 Edition 1 dated 23 July 1999 is now superseded and must be withdrawn from use.
Aus 4621 Edition 6	Coral and Solomon Seas - Mackay to Solomon Islands	1:1 500 000	22 September 2017	General updating due to adoption of Solomon Islands charting. Chart Aus 4621 Edition 5 dated 18 December 2015 is now superseded and must be withdrawn from use.
Aus 4622 Edition 3	South Pacific Island - Admiralty Islands to Solomon Islands	1:1 500 000	22 September 2017	General updating due to adoption of Solomon Islands charting. Chart Aus 4622 Edition 2 dated 9 May 2008 is now superseded and must be withdrawn from use.
Aus 4635 Edition 2	Australia - East Coast - Cape Byron to Mackay	1:1 500 000	22 September 2017	General updating due to adoption of Solomon Islands charting. Chart Aus 4635 Edition 1 dated 1 July 2011 is now superseded and must be withdrawn from use.
Aus 257 Edition 5	Townsville Harbour and Ross River Entrance	1:7 500	22 September 2017	New edition with general updating throughout; including nav aids, infrastructure and new bathymetric data. Chart Aus 257 Edition 4 dated 21 November 2008 is now superseded and must be withdrawn from use.

Chart permanently withdrawn

Charts listed above as withdrawn no longer meet chart carriage requirements and should be marked as "superseded" and replaced with the new chart/ new edition listed prior to passage through the area covered by the new chart.

When placing orders with a chart agent between notice of forthcoming edition and its publication, mariners should advise whether their order pertains to the current edition or the new edition.

For further details refer to the AHS website at www.hydro.gov.au for new edition and new chart stock arrival information.

766 AUSTRALIA - Product - Amendment to Australian National Tide Tables 2018
Australian Hydrographic Service

Page 355

Amend Chart Datum correction for Katurasele (Port No 56362) to 0.0
Chart Datum correction for Vaghena Island (Port No 56380) to 0.0
Chart Datum correction for Gizo Anchorage (Port No 56460) to 0.0
Chart Datum correction for Blackett Strait (Port No 56470) to 0.0
Chart Datum correction for Munda Point (Port No 56480) to 0.0
Chart Datum correction for Viru Harbour (Port No 56490) to 0.0
Chart Datum correction for Marovo Lagoon (Port No 56510) to 0.0
Chart Datum correction for Monggo Passage (Port No 56520) to 0.0
Chart Datum correction for Lolomo Passage (Port No 56540) to 0.0
Chart Datum correction for Nughu Island (Port No 56690) to 0.0
Chart Datum correction for Mbungana Island (Port No 56710) to 0.0
Chart Datum correction for Sandfly Passage (Port No 56750) to 0.0
Chart Datum correction for Thousand Ships Bay (Port No 56780) to 0.0
Chart Datum correction for Bina Harbour (Port No 56910) to 0.0

Page 358

Amend Anewa Bay To Chart Datum AU5683P1 ENC SUBTRACT 0.2
Anewa Bay To Chart Datum AUS 683 NE 26 Aug 2016 SUBTRACT 0.2
Insert Anewa Bay To Chart Datum SLB 301 NC 11 AUG 2017 0.0

Page 366

Amend Tarekukure Wharf To Chart Datum SB408156 ENC SUBTRACT 0.2
Tarekukure Wharf To Chart Datum SLB 106 NC 11 AUG 2017 SUBTRACT 0.2
Tarekukure Wharf To Chart Datum SLB 301 NC 11 AUG 2017 SUBTRACT 0.2

Page 367

Amend Wyndham To Chart Datum AUS 32 NE 11 AUG 2017 SUBTRACT 0.1

Page 368

Amend Yamba To Chart Datum AUS 222 NE 11 AUG 2017 0.0

767 AUSTRALIA - Product - Amendment to Australian National Tide Tables 2017
Australian Hydrographic Service

Page 459

Insert Tarekukure Wharf To Chart Datum SLB 106 NC 11 AUG 2017 SUBTRACT 0.2

768 AUSTRALIA - Summer time
Australian Government

Clocks will be wound forward one hour at 0200 local time on 1 OCT 2017 in the Australian Capital Territory, New South Wales, South Australia, Victoria and Tasmania.

No changes will be made in Queensland, Northern Territory and Western Australia.

769 AUSTRALIA - NEW SOUTH WALES - Brooms Head - Light buoy eastwards
NSW Department of Primary Industries

Aus 812 [638/2017]

Move	light buoy	29° 32'.96 S	153° 26'.45 E
	to	29° 36'.76 S	153° 29'.19 E

Aus 813 [1137/2016]

Move	light buoy	29° 32'.96 S	153° 26'.45 E
	to	29° 36'.76 S	153° 29'.19 E

770 AUSTRALIA - NEW SOUTH WALES - Port Jackson - Manly Wharf - Depths; nav aids
NSW Roads and Maritime Services

Aus 200 [494/2017]

Insert	depth, 4 ₃ m, and extend contour S to enclose	33° 48'.098 S	151° 16'.975 E
--------	--	---------------	----------------

Replace	depth, 6 ₂ m, with depth, 5 ₉ m	33° 48'.06 S	151° 16'.84 E
---------	---	--------------	---------------

Aus 201 [593/2017]

Insert	accompanying block	33° 48'.04 S	151° 17'.05 E
--------	--------------------	--------------	---------------

771 AUSTRALIA - NEW SOUTH WALES - Port Kembla - Light Buoy
Port Authority of New South Wales PK Notice 6/2017

Aus 194 [720/2017]

Insert	special pillar light buoy, Q(2)Y.6s, with topmark	34° 28'.252 S	150° 54'.695 E
--------	---	---------------	----------------

772 AUSTRALIA - NEW SOUTH WALES - Trial Bay - Tide gauge
Australian Hydrographic Service

Aus 220 (plan, Trial Bay) [803/2016]

Replace	tide scale, with special beacon, with topmark and legend <i>Tide Gauge</i>	30° 53'.40 S	153° 01'.02 E
---------	--	--------------	---------------

773 AUSTRALIA - NEW SOUTH WALES - Yamba - Depths; nav aids
Port Authority of New South Wales

Aus 812 [769/2017]

Insert	accompanying block	29° 26'.7 S	153° 20'.4 E
--------	--------------------	-------------	--------------

Aus 813 [769/2017]

Insert	accompanying block	29° 26'.7 S	153° 20'.4 E
--------	--------------------	-------------	--------------

774 AUSTRALIA - QUEENSLAND - Airlie Beach - Chart limits
Australian Hydrographic Service

Aus 253 [686/2017]

Insert	magenta limit, between	20° 13'.90 S	148° 45'.20 E
		20° 16'.55 S	148° 45'.20 E
	magenta limit, between	20° 23'.674 S	148° 41'.270 E
		20° 23'.940 S	148° 41'.270 E

Delete	magenta limit, between	20° 13'.90 S	148° 45'.20 E
		20° 13'.90 S	148° 46'.00 E
		20° 16'.55 S	148° 46'.00 E
		20° 16'.55 S	148° 45'.20 E
	magenta limit, between	20° 23'.67 S	148° 41'.27 E
		20° 23'.67 S	148° 41'.35 E
		20° 23'.94 S	148° 41'.35 E
		20° 23'.94 S	148° 41'.27 E

775 AUSTRALIA - QUEENSLAND - Gladstone - Boyne Cutting to Middle Bank - Lights

Maritime Safety Queensland Notice 362/2017

Aus 244 [690/2017]

Amend	light to, <i>Q.Bu (F.Day) & Fl(2) 4s</i>	23° 49'.41 S	151° 15'.69 E
	light to, <i>Iso.Bu.2s (F.Day) & Fl(2) 8s</i>	23° 49'.49 S	151° 15'.84 E

Aus 245 [724/2017]

Amend	light to, <i>Q.Bu (F.Day) & Fl(2) 4s</i>	23° 49'.41 S	151° 15'.69 E
	light to, <i>Iso.Bu.2s (F.Day) & Fl(2) 8s</i>	23° 49'.49 S	151° 15'.84 E

Aus 246 [1233/2016]

Amend	light to, <i>Q.6m (F.Day) & Fl(2) 4s</i>	23° 56'.26 S	151° 27'.32 E
	light to, <i>Iso.2s 18m (F.Day) & Fl(2) 6s</i>	23° 56'.89 S	151° 28'.39 E

Aus 271 [690/2017]

Amend	light to, <i>Q.Bu (F.Day) & Fl(2) 4s</i>	23° 49'.41 S	151° 15'.69 E
	light to, <i>Iso.Bu.2s (F.Day) & Fl(2) 8s</i>	23° 49'.49 S	151° 15'.84 E

776 AUSTRALIA - QUEENSLAND - Gold Coast - Light buoys

Gold Coast Waterways Authority

Aus 230 [692/2017]

Replace	light beacon, with special spar light buoy, <i>Fl.Y.5s</i> , without topmark	27° 58'.04 S	153° 25'.17 E
Move	light buoy	27° 58'.11 S	153° 25'.17 E
	to	27° 58'.132 S	153° 25'.213 E

777 AUSTRALIA - QUEENSLAND - Home Islands to Hannibal Islands - Lights

Maritime Safety Queensland

Aus 835 [953/2016]

Amend	light to, <i>Fl.WR.2.5s 9/8M</i>	11° 58'.5 S	143° 17'.4 E
	light to, <i>Fl(2) 8s 27m 15M</i>	11° 35'.6 S	142° 56'.7 E

778 AUSTRALIA - QUEENSLAND - Lloyd Bay - Rock

M Cramb

Aus 834 [1023/2016]

Insert	rock awash enclosed by danger circle, with legend <i>Rep (2017)</i>	12° 49'.29 S	143° 24'.41 E
--------	---	--------------	---------------

779 PAPUA NEW GUINEA - Port Moresby - Mooring buoys

National Maritime Safety Authority PNG

Aus 621 [NE 18/11/2016]

Insert	accompanying block	9° 27'.50 S	147° 08'.40 E
--------	--------------------	-------------	---------------

Aus 622 [549/2017]

Insert	accompanying block A	9° 27'.07 S	147° 08'.19 E
	accompanying block B	9° 27'.35 S	147° 08'.34 E

780 AUSTRALIA - WESTERN AUSTRALIA - Dampier - Nav aids
Australian Hydrographic Service

Aus 59 [362/2017]

Amend	light to, <i>F.Y</i> & <i>F.R</i>	20° 38'.24 S	116° 43'.75 E
	light to, <i>F.Y</i>	20° 38'.27 S	116° 43'.73 E

Delete	structure colour, BYB	20° 37'.70 S	116° 43'.53 E
--------	-----------------------	--------------	---------------

Aus 60 [362/2017]

Amend	light to, <i>F.Y</i> & <i>F.R</i>	20° 38'.24 S	116° 43'.75 E
	light to, <i>F.Y</i>	20° 38'.27 S	116° 43'.73 E

Delete	structure colour, BYB	20° 37'.70 S	116° 43'.53 E
--------	-----------------------	--------------	---------------

781 AUSTRALIA - WESTERN AUSTRALIA - Port Walcott - Recommended track; anchorages; pilot boarding place

Rio Tinto

Aus 326 [731/2017]

Delete	pilot boarding place	20° 32'.3 S	117° 15'.0 E
--------	----------------------	-------------	--------------

Aus 327 [729/2017]

Delete	pilot boarding place	20° 32'.3 S	117° 15'.0 E
--------	----------------------	-------------	--------------

Aus 740 [209/2017]

Insert	accompanying block	20° 28'.0 S	117° 25'.5 E
--------	--------------------	-------------	--------------

Move	pilot boarding place to	20° 32'.34 S	117° 14'.97 E
		20° 32'.72 S	117° 15'.10 E

Delete	depth, 14 ₂ m	20° 32'.6 S	117° 15'.0 E
--------	--------------------------	-------------	--------------

Aus 741 [729/2017]

Move	pilot boarding place to	20° 32'.34 S	117° 14'.97 E
		20° 32'.72 S	117° 15'.10 E

Delete	depth, 14 ₂ m	20° 32'.6 S	117° 15'.0 E
--------	--------------------------	-------------	--------------

782 AUSTRALIA - WESTERN AUSTRALIA - Shoal Point - Racon discontinued
AMSA

Aus 332 [1070/2016]

Delete	magenta circle with legend, Racon (O)	28° 03'.5 S	114° 12'.4 E
--------	---------------------------------------	-------------	--------------

Aus 4725 (INT 725) [605/2017]

Delete	magenta circle with legend, Racon (O)	28° 03'.5 S	114° 12'.4 E
--------	---------------------------------------	-------------	--------------

783 AUSTRALIA - VICTORIA - Port Fairy - Light Buoy
AHS

Aus 141 [876/2015]

Move	light buoy to	38° 23'.03 S	142° 15'.25 E
		38° 22'.99 S	142° 15'.29 E

Aus 141 (plan, Port Fairy) [876/2015]

Move	light buoy to	38° 23'.03 S	142° 15'.25 E
		38° 22'.989 S	142° 15'.294 E

784 AUSTRALIA - VICTORIA - Port Phillip - Wedge Spit - Buoy
AHS

Aus 143 [741/2017]

Delete	buoy	38° 02'.9 S	144° 38'.1 E
--------	------	-------------	--------------

Aus 157 [741/2017]

Insert	special cylindrical buoy, with topmark	38° 02'.88 S	144° 37'.92 E
--------	--	--------------	---------------

Delete	buoy	38° 02'.91 S	144° 38'.06 E
--------	------	--------------	---------------

785 AUSTRALIA - VICTORIA - Western Port - Settlement Point - Nav aids
Australian Hydrographic Service

Aus 150 [609/2017]

Delete	structure colour, R	38° 22'.6 S	145° 26'.4 E
	structure colour, R	38° 22'.9 S	145° 25'.7 E
	structure colour, R	38° 23'.1 S	145° 25'.0 E
	structure colour, R	38° 23'.4 S	145° 24'.2 E
	topmark	38° 24'.2 S	145° 24'.2 E
	topmark	38° 24'.2 S	145° 24'.9 E

786 AUSTRALIA - VICTORIA - Western Port - Rutherford Inlet to Gentle Annie Channel - Nav aids
Parks Victoria

Aus 150 [785/2017]

Insert	starboard lateral beacon, No 1, with topmark	38° 15'.31 S	145° 19'.22 E
--------	--	--------------	---------------

Delete	depth, 0 ₄ m	38° 15'.3 S	145° 19'.2 E
	beacon	38° 13'.3 S	145° 21'.1 E

Aus 151 (inset, Continuation of Western Port) [557/2017]

Insert	starboard lateral beacon, No 1, with topmark	38° 15'.313 S	145° 19'.215 E
--------	--	---------------	----------------

Aus 152 (plan, Rutherford Inlet) [704/2017]

Insert	starboard lateral beacon, No 1, with topmark	38° 15'.313 S	145° 19'.215 E
	port lateral beacon, No 2, with topmark	38° 15'.094 S	145° 19'.568 E

Move	light beacon	38° 15'.58 S	145° 18'.50 E
	to	38° 15'.582 S	145° 18'.515 E
	beacon	38° 15'.57 S	145° 18'.46 E
	to	38° 15'.573 S	145° 18'.472 E
	beacon	38° 13'.67 S	145° 18'.25 E
	to	38° 13'.658 S	145° 18'.243 E

787 AUSTRALIA - TASMANIA - Port Dalrymple - Buoy
Australian Hydrographic Service

Aus 167 [513/2017]

Insert	special buoy, without topmark	41° 08'.544 S	146° 49'.096 E
--------	-------------------------------	---------------	----------------

Delete	depth, 0 ₈ m	41° 08'.54 S	146° 49'.10 E
	buoy	41° 08'.55 S	146° 49'.06 E

Aus 167 (plan, Bell Bay) [513/2017]

Move	buoy	41° 08'.54 S	146° 49'.06 E
	to	41° 08'.544 S	146° 49'.096 E

Delete	depth, 0 ₈ m	41° 08'.54 S	146° 49'.10 E
--------	-------------------------	--------------	---------------

788 AUSTRALIA - TASMANIA - Port Esperance - Light buoy withdrawn
Marine and Safety Tasmania

Aus 173 [414/2017]

Delete light buoy

43° 20'.9 S

147° 03'.5 E

Aus 795 [660/2017]

Delete light buoy

43° 20'.9 S

147° 03'.5 E

789(T)/2017 AUSTRALIA - NEW SOUTH WALES - Port Jackson - Glebe Island - Harbour works
Port Authority of New South Wales Notice 18/2017

Repair works on the Glebe Island Bridge (33° 52'.10 S 151° 11'.15 E) are in progress.

Navigation will be restricted one channel at a time in the western and eastern channels, with appropriate shapes and marks displayed.

Mariners are advised to navigate with caution in the area.

Chart temporarily affected - Aus 200 - Aus 202

790(T)/2017 AUSTRALIA - NEW SOUTH WALES - Tweed River - Dredging operations completed
Former Notice - 512(T)/2016 is cancelled
Maritime Safety Queensland Notice 235(T)/2016

Cancel this notice on receipt.

Chart formerly affected - Aus 220

791(T)/2017 AUSTRALIA - QUEENSLAND - Bailey Islet - Light range restored
Former Notice - 517(T)/2017 is cancelled
Australian Maritime Safety Authority

Cancel this notice on receipt.

Chart formerly affected - Aus 249 - Aus 251 - Aus 823 - Aus 824

792(T)/2017 AUSTRALIA - QUEENSLAND - Bundaberg - Burnett River - Exclusion zone
Maritime Safety Queensland Notice 372(T)/2017

An exclusion zone, marked by special light buoys exists around *HMAS Tobruk* in the area bounded by the following positions:

<i>Position</i>	<i>Remarks</i>
24°46'.10 S 152°22'.92 E	
24°46'.10 S 152°22'.87 E	special light buoy, Q.Y
24°46'.15 S 152°22'.88 E	special light buoy, Q.Y
24°46'.19 S 152°22'.89 E	special light buoy, Q.Y
24°46'.19 S 152°22'.93 E	

Chart temporarily affected - Aus 242

793(T)/2017 AUSTRALIA - QUEENSLAND - Bundaberg - Burnett Heads - Dredging operations
Maritime Safety Queensland Notice 383(T)/2017

Dredging operations are in progress in the vicinity of position 24° 45'.55 S 152° 24'.11 E.

Mariners are advised to navigate with caution in the area.

Chart temporarily affected - Aus 242

794(T)/2017 AUSTRALIA - QUEENSLAND - Bustard Head to Hydrographers Passage - Military Exercise completed
Former Notice - 562(T)/2017 is cancelled
Department of Defence

Cancel this notice on receipt.

Chart formerly affected - Aus 244 - Aus 245 - Aus 246 - Aus 247 - Aus 248 - Aus 249 - Aus 260 - Aus 261 - Aus 265 - Aus 271 - Aus 272 - Aus 367 - Aus 490 - Aus 818 - Aus 819 - Aus 820 - Aus 821 - Aus 822 - Aus 823 - Aus 824 - Aus 825 - Aus 4620 (INT 620) - Aus 4621 (INT 621) - Aus 4635 (INT 635)

795(T)/2017 AUSTRALIA - QUEENSLAND - Gladstone - Clinton Channel - Diving operations completed*Former Notice* - 1154(T)/2016 is cancelled

Maritime Safety Queensland Notice 450(T)/2016

Cancel this notice on receipt.

Chart formerly affected - Aus 244 - Aus 245 - Aus 271**796(T)/2017 AUSTRALIA - QUEENSLAND - Molle Channel - Submarine power cable repaired***Former Notice* - 254(T)/2017 is cancelled

Maritime Safety Queensland

Cancel this notice on receipt.

Chart formerly affected - Aus 252 - Aus 253 - Aus 824 - Aus 825**797(T)/2017 AUSTRALIA - QUEENSLAND - Moreton Bay to Point Cartwright - Nav aids off station; nav aids destroyed; depths unreliable; obstructions***Former Notice* - 256(T)/2017 is cancelled

Maritime Safety Queensland

Cancel this notice on receipt.

Chart formerly affected - Aus 235 - Aus 236 - Aus 237 - Aus 238 - Aus 814 - Aus 815**798(T)/2017 AUSTRALIA - QUEENSLAND - Pioneer Bay - Bluff Point - Obstruction removed***Former Notice* - 378(T)/2017 is cancelled

Maritime Safety Queensland

Cancel this notice on receipt.

Chart formerly affected - Aus 252 - Aus 253 - Aus 824 - Aus 825**799(T)/2017 AUSTRALIA - QUEENSLAND - Rattlesnake Island - Live firing**

Maritime Safety Queensland Notice 376(T)/2017

Live firing activities will be conducted within a 5M radius of position 19° 02'.27 S 146° 36'.43 E from 18 September to 29 September 2017.

Mariners are advised to navigate with caution in the area.

Chart temporarily affected - Aus 256 - Aus 827**800(T)/2017 AUSTRALIA - QUEENSLAND - Shoalwater Bay - Live firing completed***Former Notice* - 616(T)/2017 is cancelled

Maritime Safety Queensland Notice 238(T)/2017

Cancel this notice on receipt.

Chart formerly affected - Aus 260 - Aus 261 - Aus 367 - Aus 822

801(T)/2017 AUSTRALIA - QUEENSLAND - Shoalwater Bay - Live firing*Former Notice* - 669(T)/2017 is cancelled

Maritime Safety Queensland Notice 310(T)/2017

Live firing will be conducted in the Shoalwater Bay training area during the period 1 to 9 October 2017.

A marine danger area extends to all internal waters bounded by the following positions:

22° 30'.73 S 150° 26'.34 E

22° 38'.62 S 150° 27'.46 E

22° 40'.00 S 150° 38'.00 E

22° 40'.01 S 150° 41'.02 E

22° 29'.42 S 150° 38'.87 E

22° 27'.70 S 150° 32'.49 E.

All waters, creeks, beaches and other areas within the declared marine danger area are not available for access.

There will be safe anchorages available at Freshwater, Port Clinton, West Water Port Clinton, South Arm Port Clinton, Pearl Bay, Island Head Creek and Supply Bay Townshend Island.

Mariners are advised to keep clear of this area throughout the above times.

Chart temporarily affected - Aus 248 - Aus 367 - Aus 820 - Aus 822

802(T)/2017 AUSTRALIA - QUEENSLAND - Shoalwater Bay - Live firing

Maritime Safety Queensland Notice 309(T)/2017

Live firing will be conducted in the Shoalwater Bay training area during the period 19 September to 1 October 2017.

A marine danger area extends to all internal waters bounded by the following positions:

22° 31'.09 S 150° 43'.53 E

22° 33'.13 S 150° 42'.40 E

22° 39'.74 S 150° 41'.03 E

22° 41'.12 S 150° 50'.17 E

22° 30'.65 S 150° 49'.34 E.

All waters, creeks, beaches and other areas within the declared marine danger area are not available for access.

There will be safe anchorages available at Freshwater, Port Clinton, West Water Port Clinton, Pearl Bay, Island Head Creek and Supply Bay Townshend Island.

Mariners are advised to keep clear of this area throughout the above times.

Chart temporarily affected - Aus 248 - Aus 367 - Aus 820 - Aus 822

803(T)/2017 AUSTRALIA - QUEENSLAND - Shoalwater Bay - Triangular Island - Military exercise completed*Former Notice* - 668(T)/2017 is cancelled

Maritime Safety Queensland Notice 298(T)/2017

Cancel this notice on receipt.

Chart formerly affected - Aus 260 - Aus 367 - Aus 822

804(T)/2017 AUSTRALIA - QUEENSLAND - Shute Harbour - Wreck salvaged*Former Notice* - 332(T)/2017 is cancelled

Maritime Safety Queensland

Cancel this notice on receipt.

Chart formerly affected - Aus 253 - Aus 269

805(T)/2017 AUSTRALIA - NORTHERN TERRITORY - East Vernon Island - Obstructions removed

Former Notice - 474(T)/2017 is cancelled
Department of Defence

Cancel this notice on receipt.

Chart formerly affected - Aus 20 - Aus 722

806(T)/2017 AUSTRALIA - NORTHERN TERRITORY - Gove Harbour - Light buoy restored

Former Notice - 757(T)/2017 is cancelled
Rio Tinto

Cancel this notice on receipt.

Chart formerly affected - Aus 15

807(T)/2017 AUSTRALIA - WESTERN AUSTRALIA - Browse Island - Subsea operations completed northeastwards

Former Notice - 304(T)/2017 is cancelled
Shell Australia

Cancel this notice on receipt.

Chart formerly affected - Aus 314 - Aus 318 - Aus 319 - Aus 320

808(T)/2017 AUSTRALIA - WESTERN AUSTRALIA - Browse Island - Subsea operations completed northwestwards

Former Notice - 622(T)/2017 is cancelled
INPEX

Cancel this notice on receipt.

Chart formerly affected - Aus 319 - Aus 320 - Aus 4721 (INT 721) - Aus 4722 (INT 722)

809(T)/2017 AUSTRALIA - WESTERN AUSTRALIA - Dampier Archipelago - Obstructions removed

Former Notice - 760(T)/2017 is cancelled
Far Senator

Cancel this notice on receipt.

Chart formerly affected - Aus 57 - Aus 327 - Aus 741 - Aus 742

810(T)/2017 AUSTRALIA - WESTERN AUSTRALIA - Heywood Shoal - Survey operations completed

Former Notice - 627(T)/2017 is cancelled
Blue Ocean Monitoring

Cancel this notice on receipt.

Chart formerly affected - Aus 319 - Aus 320 - Aus 4721 (INT 721) - Aus 4722 (INT 722)

811(T)/2017 AUSTRALIA - WESTERN AUSTRALIA - Port of Ashburton - Harbour works

Pilbara Ports Authority Notice A13/2017

Works associated with the removal of piles are in progress in the vicinity of position 21° 41'.0 S
115° 00'.7 E.

Vessels HT *Bhagwan Renegade*, and the barge *HB Westsea 11* are on site and will monitor VHF Ch 14.

Mariners are advised to navigate with caution in the area.

Chart temporarily affected - Aus 64 - Aus 69 - Aus 743

812(T)/2017 AUSTRALIA - WESTERN AUSTRALIA - Rankin Bank - Mooring buoys recovered

Former Notice - 270(T)/2017 is cancelled

Australian Maritime Safety Authority

Cancel this notice on receipt.

Chart formerly affected - Aus 327

HYDROGRAPHIC REPORTS

<i>Locality</i>	<i>Report</i>	<i>Ship/Authority</i>	<i>Observer</i>
QLD- Lloyd Bay	Rock	<i>MV Katrina III</i>	M Cramb

III

NAVIGATION WARNINGS

The Australian Hydrographic Service will no longer compile Section III of the Australian Notices to Mariners. For the most up to date navigation warnings please refer to:

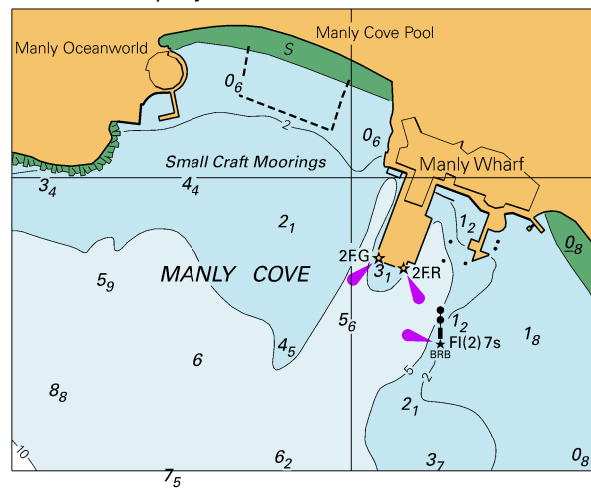
AMSA Navigation Warnings

<http://amsa.gov.au/search-and-rescue/distress-and-safety-comms/msi/msi-email/index.asp>

New Zealand Notices to Mariners (Navarea XIV warnings)

<http://www.linz.govt.nz/sea/maritime-safety/notices-mariners>

To accompany Australian Notice to Mariners 770/2017

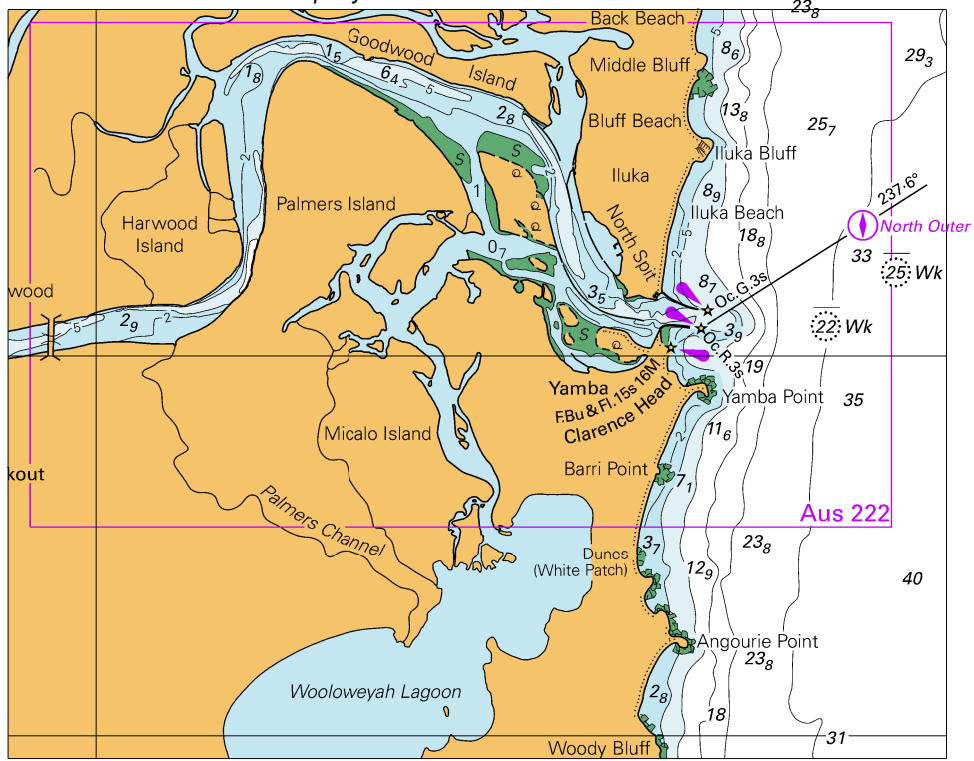


© Commonwealth of Australia 2017

Block for Chart Aus 201

(77.8 x 61.1mm)

To accompany Australian Notice to Mariners 773/2017

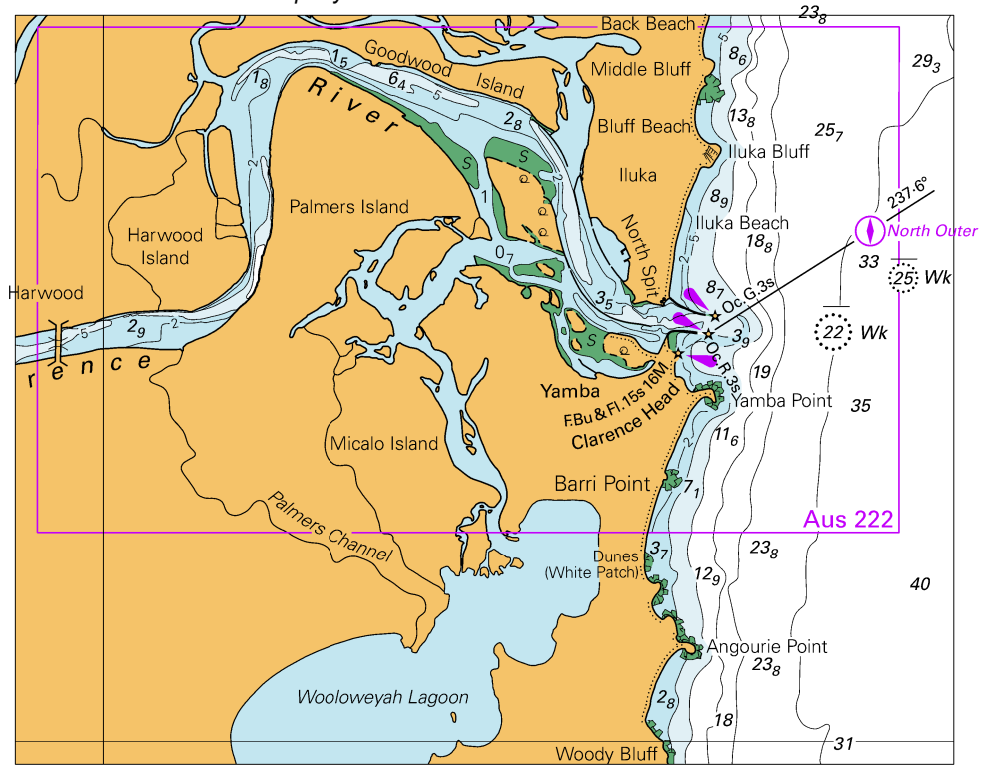


Block for Chart Aus 812

© Commonwealth of Australia 2017

(124.0 x 99.0mm)

To accompany Australian Notice to Mariners 773/2017

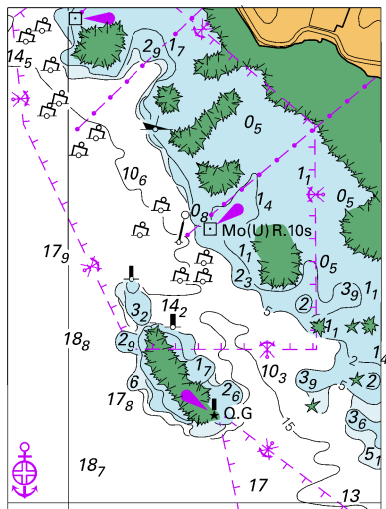


Block for Chart Aus 813

© Commonwealth of Australia 2017

(124.0 x 99.0mm)

To accompany Australian Notice to Mariners 779/2017



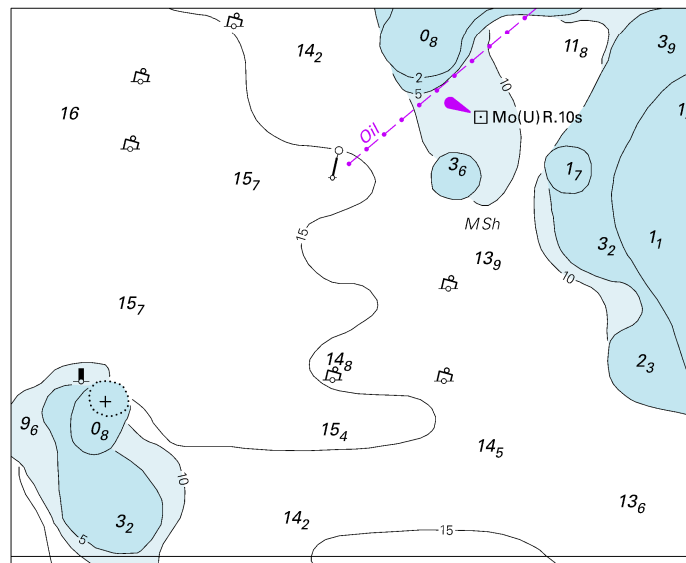
© Commonwealth of Australia 2017

Block for Chart Aus 621 (49.4 x 66.4mm)

Block A for Chart Aus 622

(88.7 x 113.5mm)

To accompany Australian Notice to Mariners 779/2017

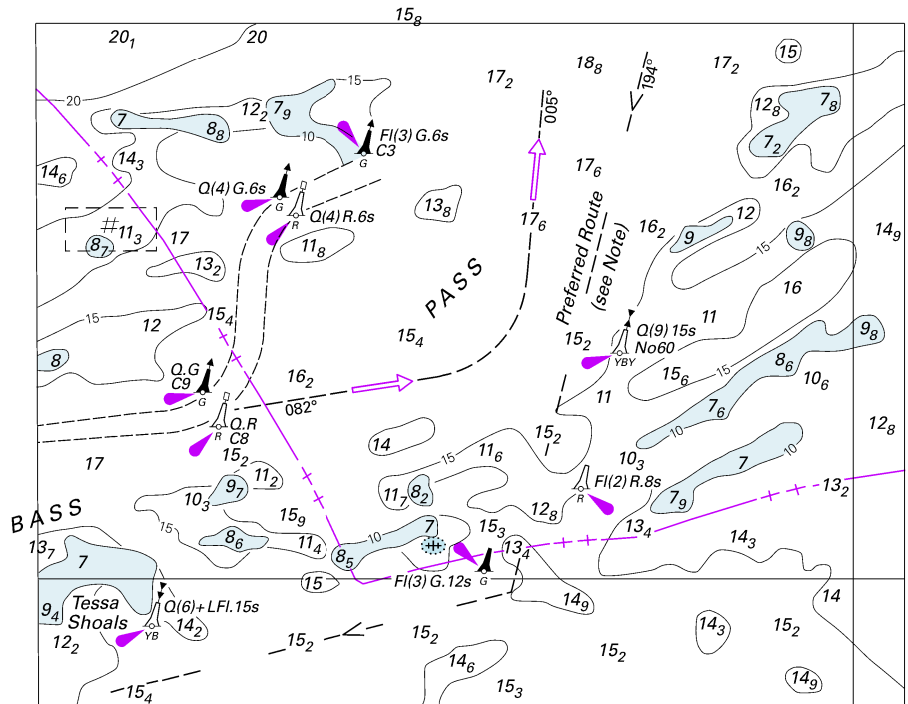


© Commonwealth of Australia 2017

Block B for Chart Aus 622

(90.4 x 73.8mm)

To accompany Australian Notice to Mariners 781/2017



Block for Chart Aus 740

© Commonwealth of Australia 2017

(114.8 x 90.1 mm)