



6 May 2016

Edition 9

Australian Notices to Mariners are the authority for correcting Australian Charts and Publications

---

# AUSTRALIAN NOTICES TO MARINERS

**Notices 495 - 531**



Published fortnightly by the Australian Hydrographic Service

Commodore B.K. BRACE RAN  
*Hydrographer of Australia*

---

## SECTIONS.

- I. Australian Notices to Mariners, including blocks and notes.
- II. Hydrographic Reports.
- III. Navigational Warnings.

## SUPPLEMENTS.

- I. Tracings
- II. Cumulative List of Australian Notices to Mariners.
- III. Cumulative List of Temporary and Preliminary Australian Notices to Mariners.
- IV. Temporary and Preliminary Notices in force.
- V. Amendments to Admiralty List of Lights and Fog Signals (Vol K), Radio Signals (NP 281(2), 282, 283(2), 285, 286(4)) and Sailing Directions (NP 9, 13, 14, 15, 33, 34, 35, 36, 39, 44, 51, 60, 61, 62, 100, 136).

---

© Commonwealth of Australia 2016

This work is copyright. Apart from any use permitted under the Copyright Act 1968, no part may be reproduced by any process, adapted, communicated or commercially exploited without prior written permission from The Commonwealth represented by the Australian Hydrographic Service.

## IMPORTANT NOTICE

This edition of Notices to Mariners includes all significant information affecting AHS products which the AHS has become aware of since the last edition. All reasonable efforts have been made to ensure the accuracy and completeness of the information, including third party information, on which these updates are based. The AHS regards third parties from which it receives information as reliable, however the AHS cannot verify all such information and errors may therefore exist. The AHS does not accept liability for errors in third party information.

---

## GENERAL INSTRUCTIONS

The substance of these notices should be inserted on the charts affected.

Bearings are referred to the true compass and are reckoned clockwise from North; those relating to lights are given as seen by an observer from seaward.

Positions quoted in notices relate to WGS84 which is the horizontal datum for all charts produced by the Australian Hydrographic Service.

The range quoted for a light is its nominal range.

Depths are with reference to the chart datum of each chart. Heights are above mean high water springs or mean higher high water, as appropriate.

The capital letter (P) or (T) after the number of any notice denotes a preliminary or temporary notice respectively, which are contained separately at the end of the permanent notices.

A star (\*) adjacent to the number of a notice indicates that the notice is based on original information.

---

## REPORTING OF DANGERS

Mariners are particularly requested to notify the AUSTRALIAN HYDROGRAPHIC SERVICE, Locked Bag 8801 Wollongong, NSW 2500 (Fax 02-4223 6599, e-mail [datacentre@hydro.gov.au](mailto:datacentre@hydro.gov.au) or, alternatively by filling in and submitting the [Hydrographic Notes](#) forms located on the web site – [www.hydro.gov.au](http://www.hydro.gov.au)), immediately on the discovery of new dangers or suspected dangers to navigation. For changes or defects in aids to navigation notify AusSAR (Fax 02-6230 6868 or email [rccaus@amsa.gov.au](mailto:rccaus@amsa.gov.au)).

---

## AUTHORISED USE

Copies of Australian notices are available free of charge from the Australian Hydrographic Service (AHS) website ([www.hydro.gov.au](http://www.hydro.gov.au)) and through the eNotices (email) service ([www.hydro.gov.au/enotices/enotices.htm](http://www.hydro.gov.au/enotices/enotices.htm)).

Individual Notices may be copied for the purpose of inserting Notice substance on official charts and publications. Paper copies may be printed by chart agents and distributed to customers on a cost recovery basis. Participating chart agents are listed on the AHS website as providing a 'Paper Notices to Mariners' service ([www.hydro.gov.au/prodserv/distributors/distributors.htm](http://www.hydro.gov.au/prodserv/distributors/distributors.htm)). Copies of the notices may not be sold for profit without prior written agreement.

## NUMERICAL INDEX OF NOTICES TO MARINERS

### Edition No 9

Notices	Aus Chart, INT Chart, ENC Cell, AHP, BA Pubs
495	Products - New Charts, New Editions, Withdrawn Charts
496	Aus 222
497	Aus 616, 617
498	Amendment to Australian National Tide Tables 2016
499	Aus 219, 811
500	Aus 809
501	Aus 204
502	Aus 200, 201
503	Aus 835
504	Aus 117, 754, 755
505	Aus 113, 117
506	Aus 81
507	Aus 4070, INT 70
508	Aus 143, 155
509	Aus 157
510	Aus 143, 158
511	Aus 177
512(T)	Aus 220
513(T)	Aus 257
514(T)	Aus 377, 378, 379, 502, 505, 506, 507, 508, 621, 623, 647, 840, 4603, 4604, 4620, 4621, 4622, INT 603, 604, 620, 621, 622
515(T)	Aus 28
516(T)	Aus 24, 26, 28
517(T)	Aus 26, 28, AX 00026T
518(T)	Aus 319, 320, 4721, 4722, INT 721, 722
519(T)	Aus 327, 741, 742, 4722, 4723, INT 722, 723
520(T)	Aus 328, 4723, INT 723
521(T)	Aus 328, 4723, INT 723, AX 04723U
522(T)	Aus 328
523(T)	Aus 324, 325, 326, 739, 4722, INT 722
524(T)	Aus 62, 65, 327, 742, 4723, 4725, INT 723, 725
525(T)	Aus 144, 158
526(T)	Aus 154
527(T)	Aus 155
528(T)	Aus 167, 799, AX 00799S
529(T)	Aus 169, 766, AX 00766S
530(T)	Aus 167
531(T)	Aus 169, 766

# NUMERICAL INDEX OF CHARTS AFFECTED

## Edition No 9

Aus Chart	Notices
Aus 24	516(T)
Aus 26	516(T), 517(T)
Aus 28	515(T), 516(T), 517(T)
Aus 62	524(T)
Aus 65	524(T)
Aus 81	506
Aus 113	505
Aus 117	504, 505
Aus 143	508, 510
Aus 144	525(T)
Aus 154	526(T)
Aus 155	508, 527(T)
Aus 157	509
Aus 158	510, 525(T)
Aus 167	528(T), 530(T)
Aus 169	529(T), 531(T)
Aus 177	511
Aus 200	502
Aus 201	502
Aus 204	501
Aus 219	499
Aus 220	512(T)
Aus 222	496
Aus 257	513(T)
Aus 319	518(T)
Aus 320	518(T)
Aus 324	523(T)
Aus 325	523(T)
Aus 326	523(T)
Aus 327	519(T), 524(T)
Aus 328	520(T), 521(T), 522(T)
Aus 377	514(T)
Aus 378	514(T)
Aus 379	514(T)
Aus 502	514(T)
Aus 505	514(T)
Aus 506	514(T)
Aus 507	514(T)
Aus 508	514(T)
Aus 616	497
Aus 617	497
Aus 621	514(T)
Aus 623	514(T)
Aus 647	514(T)
Aus 739	523(T)
Aus 741	519(T)
Aus 742	519(T), 524(T)
Aus 754	504
Aus 755	504
Aus 766	529(T), 531(T)
Aus 799	528(T)
Aus 809	500
Aus 811	499
Aus 835	503

Aus Chart	Notices
Aus 840	514(T)
Aus 4070	507
Aus 4603	514(T)
Aus 4604	514(T)
Aus 4620	514(T)
Aus 4621	514(T)
Aus 4622	514(T)
Aus 4721	518(T)
Aus 4722	518(T), 519(T), 523(T)
Aus 4723	519(T), 520(T), 521(T), 524(T)
Aus 4725	524(T)
AX 00026T	517(T)
AX 00766S	529(T)
AX 00799S	528(T)
AX 04723U	521(T)

INT Chart	Notices
INT 70	507
INT 603	514(T)
INT 604	514(T)
INT 620	514(T)
INT 621	514(T)
INT 622	514(T)
INT 721	518(T)
INT 722	518(T), 519(T), 523(T)
INT 723	519(T), 520(T), 521(T), 524(T)
INT 725	524(T)

**495 AUSTRALIA - Products - New Charts, New Editions, Withdrawn Charts**

Australian Hydrographic Service (AA873430)

**New Charts**

Chart	Title and Geographical limits	Scale	Publication Date	Remarks
NIL				

**New Electronic Navigation Chart (Aus ENC)**

Cell Name	Title	Publication Date	Remarks
NIL			

**New Editions and Withdrawn Charts**

Chart	Title	Scale	Publication Date	Remarks
NIL				

**Chart permanently withdrawn**

Charts listed above as withdrawn no longer meet chart carriage requirements and should be marked as "superseded" and replaced with the new chart/ new edition listed prior to passage through the area covered by the new chart.

When placing orders with a chart agent between notice of forthcoming edition and its publication, mariners should advise whether their order pertains to the current edition or the new edition.

For further details refer to the AHS website at [www.hydro.gov.au](http://www.hydro.gov.au) for new edition and new chart stock arrival information.

**496 AUSTRALIA - Products- New Charts and New Editions to be published shortly**

Australian Hydrographic Service (AA870080)

**New Charts to be published shortly**

Chart	Title	Scale	Expected Publication Date	Remarks
NIL	NIL			

**New Editions to be published shortly**

Chart	Title	Scale	Expected Publication Date	Remarks
Aus 222 Edition 2	Australia - East Coast - New South Wales - Clarence River and Approaches	1:15 000	20 May 2016	New edition with general updating throughout; including nav aids, coastline and new bathymetric data .

**497 Erratum**

C Herron (AA874201), G Pincott (AA875041)

**Notice to Mariners 384/2016**

The incorrect chart notes were issued to accompany Charts Aus 616 and Aus 617. The correct RASD notes have been attached to the blocks section of Australian Notice to Mariners Edition 9.

**Chart Aus 292**

Notice to Mariners inclusive list should read 2016-186-239

**498 AUSTRALIA - Product - Amendment to Australian National Tide Tables 2016**

Australian Hydrographic Service (AA873774)

Page xxxi

*Amend* Bunbury To Chart Datum AUS 115 NE 25 Mar 2016 Add 0.1

Page xxxiii

*Amend* Lae To Chart Datum AUS 643 NC 25 Mar 2016 0.0*Insert* Lae To Chart Datum AUS 642 NC 25 Mar 2016 0.0

Page xxxvi

*Insert* Shute Harbour To Chart Datum AUS 269 NC 8 Apr 2016 0.0

Page 366

*Amend* To Chart Datum correction for Bowen (Port No 59320) to 0.0**499\* AUSTRALIA - NEW SOUTH WALES - Camden Haven - Light buoy; tide gauges; signal station**

Australian Hydrographic Service (AA687222, AA782268, AA782269)

**Aus 219 (plan, Camden Haven) [232/2016]**

Substitute	traffic signal station with legend, <i>SS (Traffic)</i> for light	31° 38'.25 S	152° 50'.03 E
	tide gauge with legend, <i>Tide Gauge</i> for beacon	31° 38'.42 S	152° 49'.34 E
	tide gauge with legend, <i>Tide Gauge</i> for beacon	31° 38'.22 S	152° 47'.77 E

**Aus 811 [333/2016]**

<i>Amend</i>	light buoy to <i>Fl. Y. 1.5s</i>	31° 40'.9 S	152° 54'.6 E
--------------	----------------------------------	-------------	--------------

**500\* AUSTRALIA - NEW SOUTH WALES - Lake Macquarie Entrance - Signal station**

Australian Hydrographic Service (AA782154)

**Aus 809 (plan, Lake Macquarie Entrance) [333/2016]**

Substitute	traffic signal station with legend, <i>SS (Traffic)</i> for light	33° 05'.28 S	151° 39'.62 E
------------	---	--------------	---------------

**501\* AUSTRALIA - NEW SOUTH WALES - Pittwater - Observation Point - Light buoy**

Australian Hydrographic Service (AA77096)

**Aus 204 [376/2016]**

Delete	light buoy	33° 35'.51 S	151° 18'.86 E
--------	------------	--------------	---------------

**502\* AUSTRALIA - NEW SOUTH WALES - Port Jackson - Steele Point - Dolphin; light**

Australian Maritime Warfare Centre (SIRF2016004055)

**Aus 200 [437/2016]**

Delete	light, <i>Fl. Y. 3s</i>	33° 51'.05 S	151° 15'.76 E
--------	-------------------------	--------------	---------------

**Aus 201 [281/2016]**

Delete	dolphin with legend, <i>Dn</i> and light, <i>Fl. Y. 3s</i>	33° 51'.05 S	151° 15'.76 E
--------	--	--------------	---------------

**503\* AUSTRALIA - QUEENSLAND - Bremner Shoal - Depths**HMAS *Leeuwin* (SIRF2016004262)**Aus 835 [284/2016]**

Insert	depth, <i>0<sub>3</sub>m</i> , and extend contour E to enclose	11° 56'.66 S	143° 12'.63 E
	depth, <i>0<sub>1</sub>m</i> , and extend contour SW to enclose	11° 56'.91 S	143° 13'.15 E

Delete	depth, <i>1<sub>9</sub>m</i>	11° 56'.6 S	143° 12'.4 E
	depth, <i>0<sub>1</sub>m</i>	11° 56'.9 S	143° 13'.3 E

**504\* AUSTRALIA - WESTERN AUSTRALIA - Five Fathom Bank - Depths**  
UKHO (SIRF2016004248)

**Aus 117 [390/2016]**

Insert	depth, 4 <sub>7</sub> m, enclosed by contour	32° 16'.82 S	115° 37'.47 E
	depth, 3 <sub>8</sub> m, enclosed by contour	32° 16'.65 S	115° 37'.82 E

Delete	depth, 5 <sub>4</sub> m	32° 16'.6 S	115° 37'.9 E
--------	-------------------------	-------------	--------------

**Aus 754 [289/2016]**

Insert	depth, 4 <sub>6</sub> m, enclosed by contour	32° 17'.27 S	115° 37'.53 E
	depth, 4 <sub>9</sub> m, enclosed by contour	32° 10'.16 S	115° 36'.48 E
	depth, 3m	32° 08'.99 S	115° 36'.31 E
	contour, between	32° 09'.33 S	115° 36'.37 E
		32° 09'.00 S	115° 36'.18 E
		32° 08'.59 S	115° 36'.47 E
		32° 09'.00 S	115° 36'.46 E
		32° 09'.25 S	115° 36'.59 E
	depth, 4 <sub>7</sub> m, enclosed by contour	32° 16'.82 S	115° 37'.47 E
	depth, 3 <sub>8</sub> m, enclosed by contour	32° 16'.65 S	115° 37'.82 E

Substitute	depth, 3 <sub>7</sub> m, enclosed by contour for depth, 5 <sub>5</sub> m	32° 18'.1 S	115° 38'.0 E
	underwater rock enclosed by danger circle for depth, 2 <sub>1</sub> m	32° 07'.0 S	115° 36'.2 E

Delete	depth, 6 <sub>4</sub> m	32° 17'.3 S	115° 37'.6 E
	depth, 4 <sub>2</sub> m	32° 09'.4 S	115° 36'.6 E
	depth, 5 <sub>4</sub> m	32° 08'.8 S	115° 36'.6 E
	contour, between	32° 09'.3 S	115° 36'.4 E
		32° 09'.3 S	115° 36'.6 E

**Aus 755 [387/2016]**

Insert	depth, 4 <sub>6</sub> m, enclosed by contour	32° 17'.27 S	115° 37'.53 E
	depth, 4 <sub>7</sub> m, enclosed by contour	32° 16'.82 S	115° 37'.47 E
	depth, 3 <sub>8</sub> m, enclosed by contour	32° 16'.65 S	115° 37'.82 E
	depth, 4 <sub>2</sub> m, enclosed by contour	32° 20'.53 S	115° 38'.09 E
	depth, 4 <sub>3</sub> m, enclosed by contour	32° 22'.59 S	115° 38'.03 E

Substitute	depth, 3 <sub>7</sub> m, enclosed by contour for depth, 5 <sub>5</sub> m	32° 18'.1 S	115° 38'.0 E
------------	--	-------------	--------------

Delete	depth, 6 <sub>4</sub> m	32° 17'.3 S	115° 37'.6 E
	depth, 6 <sub>5</sub> m	32° 20'.6 S	115° 38'.2 E
	depth, 6 <sub>6</sub> m	32° 22'.4 S	115° 38'.0 E

**505\* AUSTRALIA - WESTERN AUSTRALIA - Fremantle - Success Channel - Navline; light buoys**  
UKHO (SIRF2016004268)

**Aus 113 [451/2016]**

Insert	continuous line with legend 169.2°, between	32° 03'.55 S	115° 41'.22 E
		32° 04'.36 S	115° 41'.40 E

Move	light buoy	32° 03'.73 S	115° 41'.20 E
	to	32° 03'.683 S	115° 41'.182 E
	light buoy	32° 03'.71 S	115° 41'.30 E
	to	32° 03'.663 S	115° 41'.307 E

**Aus 117 [504/2016]**

Insert	starboard lateral topmark	32° 03'.68 S	115° 41'.18 E
	port lateral topmark	32° 03'.66 S	115° 41'.31 E

**506\* AUSTRALIA - WESTERN AUSTRALIA - Geraldton - Depths**

Precision Hydrographic Services (DSID 3097233, SIRF2016004100)

**Aus 81 [1358/2015]**

Insert	depth, 9 <sub>6</sub> m, enclosed by contour	28° 45'.340 S	114° 35'.462 E
Delete	depth, 10m, and enclosing contour	28° 43'.82 S	114° 35'.18 E
	depth, 9m, and enclosing contour	28° 43'.95 S	114° 35'.82 E
	depth, 9 <sub>7</sub> m, and enclosing contour	28° 43'.73 S	114° 36'.00 E

**Aus 81 (plan, Port of Geraldton) [1358/2015]**

Insert	depth, 9 <sub>6</sub> m, enclosed by contour	28° 45'.340 S	114° 35'.462 E
--------	--	---------------	----------------

**507 INDIAN OCEAN - Madagascar - Cap Sainte Marie - Depth**

UKHO BA Notice 19/2404/2016 (SIRF2016004338)

**Aus 4070 (INT 70) [247/2016]**

Insert	depth, 11m, enclosed by danger circle	25° 38'.6 S	45° 28'.8 E
Delete	depth, 37m, and enclosing danger circle	25° 40'.0 S	45° 46'.0 E

**508\* AUSTRALIA - VICTORIA - Port Phillip - Werribee South - Infrastructure; nav aids***Former Notice - 987(T)/2014 is cancelled*

Parks Victoria (SIRF2016002745, SIRF2016003281, SIRF2016003333, SIRF2016003379), Total Hydrographic (SIRF2016004149)

**Aus 143 [456/2016]**

Insert	accompanying block	37° 58'.8 S	144° 43'.0 E
--------	--------------------	-------------	--------------

**Aus 155 [396/2016]**

Insert	accompanying block	37° 58'.8 S	144° 43'.0 E
--------	--------------------	-------------	--------------

**509\* AUSTRALIA - VICTORIA - Port Phillip - Point George to Indented Head - Beacons**

Parks Victoria (SIRF2016004035)

**Aus 157 [396/2016]**

Insert	special light beacon <i>Fl. Y. 5s</i> , with topmark	38° 08'.688 S	144° 43'.267 E
	special beacon, with topmark	38° 08'.578 S	144° 43'.088 E
Move	beacon	38° 07'.98 S	144° 42'.77 E
	to	38° 07'.933 S	144° 42'.618 E
	beacon	38° 08'.12 S	144° 42'.86 E
	to	38° 08'.064 S	144° 42'.711 E

**510\* AUSTRALIA - VICTORIA - Port Phillip - Martha Point - Nav aids**

Australian Hydrographic Service (AA80974, AA588900)

**Aus 143 [508/2016]**

Substitute	special light beacon, <i>Fl(2)Y. 5s</i> , with topmark for beacon	38° 17'.9 S	144° 58'.9 E
------------	---	-------------	--------------

Amend	light buoy to <i>Fl(3)Y. 10s R1</i>	38° 16'.7 S	144° 58'.5 E
-------	-------------------------------------	-------------	--------------

**Aus 158 [396/2016]**

Amend	light buoy to <i>Fl(3)Y. 10s R1</i>	38° 16'.65 S	144° 58'.51 E
-------	-------------------------------------	--------------	---------------

**511\* AUSTRALIA - TASMANIA - Macquarie Harbour - Strahan - Infrastructure; coastline; depths**

Tassal (SIRF2016002764, SIRF2016002779), Petuna Group (SIRF2016003335)

**Aus 177 [459/2016]**

Insert	accompanying block B	42° 10'.6 S	145° 18'.6 E
--------	----------------------	-------------	--------------

**Aus 177 (plan, Strahan) [459/2016]**

Insert	accompanying block A	42° 10'.6 S	145° 18'.6 E
--------	----------------------	-------------	--------------



**512(T)/2016 AUSTRALIA - NEW SOUTH WALES - Tweed River - Dredging operations***Date* - Until 31 May 2016

Maritime Safety Queensland Notice 235(T)/2016 (SIRF2016004304)

The dredge *Port Frederick* is conducting dredging operations in the entrance to the Tweed River (28° 10'.18 S 153° 33'.20 E).

Dredge spoil will be deposited in the spoil ground located 500m east of Snapper Rocks (28° 09'.71 S 153° 33'.02 E).

The dredge can be contacted on VHF Ch 16.

Mariners are advised to navigate with caution in the area.

**Chart temporarily affected - Aus 220**

**513(T)/2016 AUSTRALIA - QUEENSLAND - Townsville - Harbour works**

Maritime Safety Queensland Notice 240(T)/2016 (SIRF2016004345)

Harbour works are in progress in the vicinity of position 19° 14'.64 S 146° 49'.99 E.

Vessels will monitor VHF Ch 12 and Ch 16.

Mariners are advised to navigate with caution in the area.

**Chart temporarily affected - Aus 257**

**514(T)/2016 PAPUA NEW GUINEA - Uluma Reef to Gulf of Papua - Seismic survey completed***Former Notice* - 407(T)/2016 is cancelled

Searcher Seismic Pty Ltd (SIRF2016004233)

Cancel this notice on receipt.

**Chart formerly affected - Aus 377 - Aus 378 - Aus 379 - Aus 502 - Aus 505 - Aus 506 - Aus 507 - Aus 508 - Aus 621 - Aus 623 - Aus 647 - Aus 840 - Aus 4603 (INT 603) - Aus 4604 (INT 604) - Aus 4620 (INT 620) - Aus 4621 (INT 621) - Aus 4622 (INT 622)**

**515(T)/2016 AUSTRALIA - NORTHERN TERRITORY - Darwin - East Arm - Bladin Point - Tide gauges***Date* - Until 5 June 2016

Department of Transport NT Notice 48(T)/2016 (SIRF2016004207)

Tide gauges, marked by special light buoys, Q.Y, exist in the following positions:

12° 30'.37 S 130° 55'.12 E

12° 30'.36 S 130° 55'.15 E.

**Chart temporarily affected - Aus 28**

**516(T)/2016 AUSTRALIA - NORTHERN TERRITORY - Darwin - Nav aids unlit***Former Notice* - 413(T)/2016 is cancelled

Department of Transport NT Notices 162(T)/2015, 163(T)/2015, 33(T)/2016, 34(T)/2016, 41(T)/2016, 42(T)/2016, 53(T)/2016 (SIRF2016002526, SIRF2016002528, SIRF2016003705, SIRF2016003735, SIRF2016003901, SIRF2016003902, SIRF2016004352)

The following nav aids are unlit:

<i>Characteristic</i>	<i>Position</i>
Q.G H3	12° 29'.28 S 130° 55'.47 E
Fl.R.3s B04	12° 30'.29 S 130° 53'.71 E
Fl.G.3s B01	12° 29'.16 S 130° 51'.80 E
F.Bu & Fl.Y.2s L01B	12° 30'.67 S 130° 53'.84 E
Fl(2)5s	12° 28'.03 S 130° 49'.47 E

**Chart temporarily affected - Aus 24 - Aus 26 - Aus 28**

**517(T)/2016 AUSTRALIA - NORTHERN TERRITORY - Darwin - East Arm - Harbour works completed***Former Notice* - 1320(T)/2015 is cancelled

Department of Transport NT Notice 53(T)/2016 (SIRF2016004352)

Cancel this notice on receipt.

**Chart formerly affected - Aus 26 - Aus 28 - AX 00026T****518(T)/2016 AUSTRALIA - WESTERN AUSTRALIA - Browse Island - Drill rig northwards***Former Notice* - 312(T)/2016 is cancelledMODU *Jack Bates* (SIRF2016004165)Drill rig *Jack Bates* is conducting drilling operations in position 13° 50'.8 S 123° 19'.2 E.**Chart temporarily affected - Aus 319 - Aus 320 - Aus 4721 (INT 721) - Aus 4722 (INT 722)****519(T)/2016 AUSTRALIA - WESTERN AUSTRALIA - Dampier - Drill rig northwards***Date* - Until 12 June 2016MODU *Noble Tom Prosser* (SIRF2016004348)Drill rig *Noble Tom Prosser* is conducting drilling operations in position 20° 07'.57 S 116° 26'.16 E.**Chart temporarily affected - Aus 327 - Aus 741 - Aus 742 - Aus 4722 (INT 722) - Aus 4723 (INT 723)****520(T)/2016 AUSTRALIA - WESTERN AUSTRALIA - Montebello Islands - Drill rig northwards***Date* - Until 30 September 2016

Woodside Energy Ltd (SIRF2016004317)

Drill rig *Ocean Apex* is conducting drilling operations in position 19° 54'.82 S 115° 07'.94 E.**Chart temporarily affected - Aus 328 - Aus 4723 (INT 723)****521(T)/2016 AUSTRALIA - WESTERN AUSTRALIA - Montebello Islands - Pipeline works northwards completed***Former Notice* - 1030(T)/2015 is cancelled

Technip Oceania (SIRF2016004309)

Cancel this notice on receipt.

**Chart formerly affected - Aus 328 - Aus 4723 (INT 723) - AX 04723U****522(T)/2016 AUSTRALIA - WESTERN AUSTRALIA - Montebello Islands - Light buoy northwards***Far Sirius* (SIRF2016004335)A light buoy, *Fl.5s*, exists in position 19° 55'.51 S 115° 08'.07 E. A 2M clearance is requested.**Chart temporarily affected - Aus 328**

**523(T)/2016 AUSTRALIA - WESTERN AUSTRALIA - Rowley Shoals - Seismic survey southwards***Date* - Until 30 June 2016

Searcher Seismic Pty Ltd (SIRF2016004233)

MV *BGP Explorer*, towing an 8100m cable, is conducting a survey in the area bounded by the following positions:

19° 29'.92 S 117° 35'.08 E  
 18° 49'.92 S 117° 35'.08 E  
 17° 53'.47 S 118° 38'.30 E  
 17° 45'.00 S 119° 14'.26 E  
 17° 45'.03 S 120° 29'.47 E  
 18° 27'.67 S 120° 37'.76 E  
 18° 43'.91 S 120° 58'.87 E  
 19° 03'.02 S 120° 59'.69 E  
 19° 29'.92 S 120° 20'.12 E.

Mariners are advised to navigate with caution in the area.

**Chart temporarily affected - Aus 324 - Aus 325 - Aus 326 - Aus 739 - Aus 4722 (INT 722)****524(T)/2016 AUSTRALIA - WESTERN AUSTRALIA - Varanus Island - Drill rig northeastwards moved***Former Notice* - 368(T)/2016 is cancelledMODU *Noble Tom Prosser* (SIRF2016004315)

Cancel this notice on receipt.

**Chart formerly affected - Aus 62 - Aus 65 - Aus 327 - Aus 742 - Aus 4723 (INT 723) - Aus 4725 (INT 725)****525(T)/2016 AUSTRALIA - VICTORIA - Port Phillip - Great Ship Channel - Shoaling***Former Notice* - 485(T)/2016 is cancelled

Port of Melbourne Corporation Notice 129(T)/2016 (SIRF2016004175)

Shoaling, with a least depth of 16.4m, exists in position 38° 18'.04 S 144° 37'.71 E.

Mariners are advised to navigate with caution in the area.

**Chart temporarily affected - Aus 144 - Aus 158****526(T)/2016 AUSTRALIA - VICTORIA - Port Phillip - Swanson Dock to South Wharf - Harbour works***Former Notice* - 225(T)/2016 is cancelled

Port of Melbourne Corporation Notices 119(T)/2015, 37(T)/2016, 131(T)/2016 (AA816906, SIRF2016002987, SIRF2016004173)

Harbours works are in progress at the following locations:

South Wharf berth 26 (37° 49'.20 S 144° 55'.61 E)  
 Swanson Dock East (37° 48'.80 S 144° 54'.88 E)

Mariners are advised to navigate with caution in the area.

**Chart temporarily affected - Aus 154**

**527(T)/2016 AUSTRALIA - VICTORIA - Port Phillip - Brighton - Harbour works***Date* - Until 30 June 2016

Parks Victoria Notice 132/2016 (SIRF2016004220)

Harbour works to remove the slipway are in progress.

An exclusion zone, marked by special light buoys *Fl. Y.3s*, exists in an area bounded by the following positions:

37° 54'.54 S 144° 59'.08 E

37° 54'.54 S 144° 59'.04 E

37° 54'.55 S 144° 59'.04 E

37° 54'.55 S 144° 59'.08 E.

All hazards to navigation will display appropriate lights and shapes.

Mariners are advised to navigate with caution in the area.

**Chart temporarily affected - Aus 155****528(T)/2016 AUSTRALIA - TASMANIA - Five Mile Bluff - Wreck salvaged***Former Notice* - 1337(T)/2015 is cancelled

Marine and Safety Tasmania (AA871174)

Cancel this notice on receipt.

**Chart formerly affected - Aus 167 - Aus 799 - AX 00799S****529(T)/2016 AUSTRALIA - TASMANIA - Great Oyster Bay - Bryans Beach - Wreck salvaged***Former Notice* - 110(T)/2016 is cancelled

Marine and Safety Tasmania (AA871174)

Cancel this notice on receipt.

**Chart formerly affected - Aus 169 - Aus 766 - AX 00766S****530(T)/2016 AUSTRALIA - TASMANIA - Port Dalrymple - Mooring buoy recovered***Former Notice* - 492(T)/2016 is cancelled

Marine and Safety Tasmania (AA871174)

Cancel this notice on receipt.

**Chart formerly affected - Aus 167****531(T)/2016 AUSTRALIA - TASMANIA - Schouten Passage - Wreck salvaged***Former Notice* - 103(T)/2014 is cancelled

Marine and Safety Tasmania (AA871174)

Cancel this notice on receipt.

**Chart formerly affected - Aus 169 - Aus 766**

## HYDROGRAPHIC REPORTS

<i>Locality</i>	<i>Report</i>	<i>Ship/Authority</i>	<i>Observer</i>
QUEENSLAND - Wyborn Reef to Twin Island	Notice to Mariners inclusive list incorrect		G Pincott
CORAL SEA – Willis Islets and Bougainville Reef	Incorrect note attached to NTM 384/16		C Herron
SOUTH AUSTRALIA – Coffin Bay Blanche Port	Beacon Beacon		M Sinclair M Sinclair

### III

#### **NAVIGATION WARNINGS**

The Australian Hydrographic Service will no longer compile Section III of the Australian Notices to Mariners. For the most up to date navigation warnings please refer to:

AMSA Navigation Warnings

<http://amsa.gov.au/search-and-rescue/distress-and-safety-comms/msi/msi-email/index.asp>

New Zealand Notices to Mariners (Navarea XIV warnings)

<http://www.linz.govt.nz/sea/maritime-safety/notices-mariners>

*To accompany Australian Notice to Mariners 384/2016*

REEF AND SHOAL DELIMITATION

Where the limits of reefs and shoals have not been surveyed, the limit may have been determined from another source. These delimitations are not conclusive and dangers may exist outside the charted limits. Features considered to be reef and shoal areas are depicted by national symbology. For details see Seafarers Handbook for Australian Waters AHP 20.

*Note for chart Aus 616*

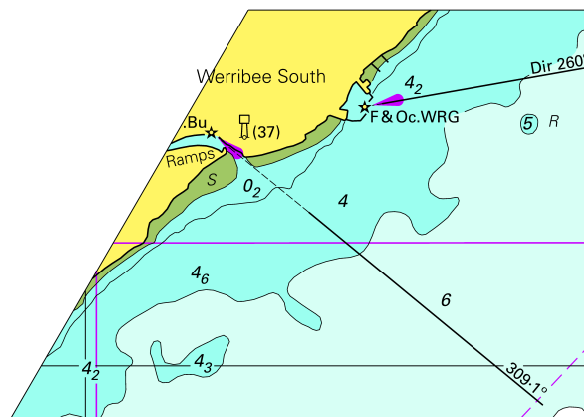
*To accompany Australian Notice to Mariners 384/2016*

REEF AND SHOAL DELIMITATION

Where the limits of reefs and shoals have not been surveyed, the limit may have been determined from another source. These delimitations are not conclusive and dangers may exist outside the charted limits. Features considered to be reef and shoal areas are depicted by national symbology. For details see Seafarers Handbook for Australian Waters AHP 20.

*Note for chart Aus 617*

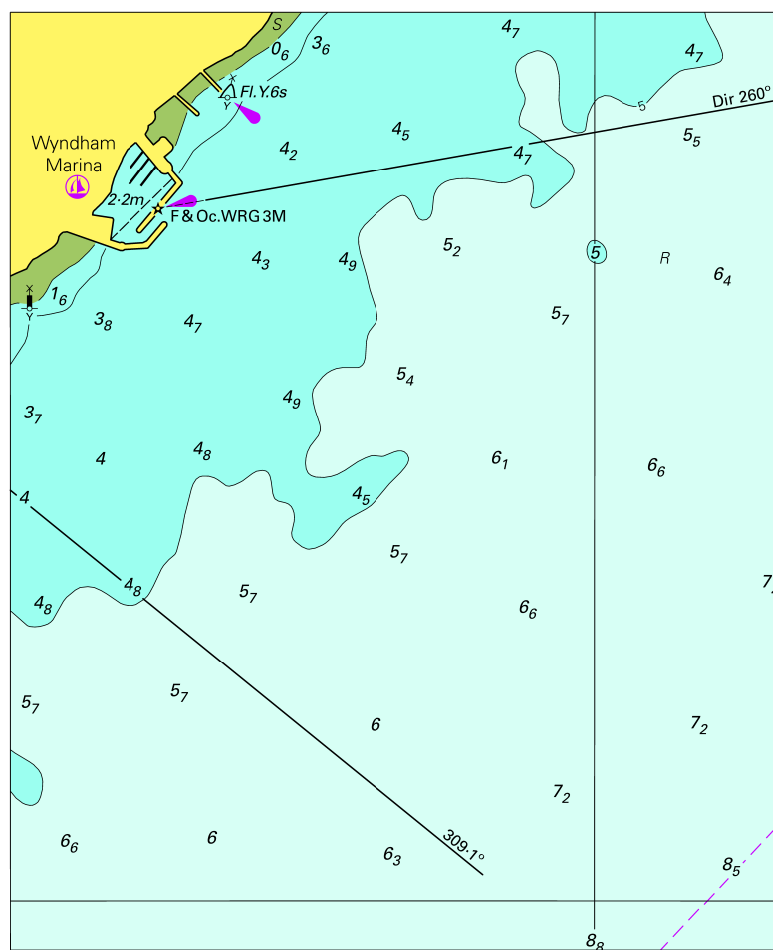
To accompany Australian Notice to Mariners 508/2016



© Commonwealth of Australia 2016  
Block for Chart Aus 143 (45.5  
76.9 x 54.0mm)



To accompany Australian Notice to Mariners 508/2016

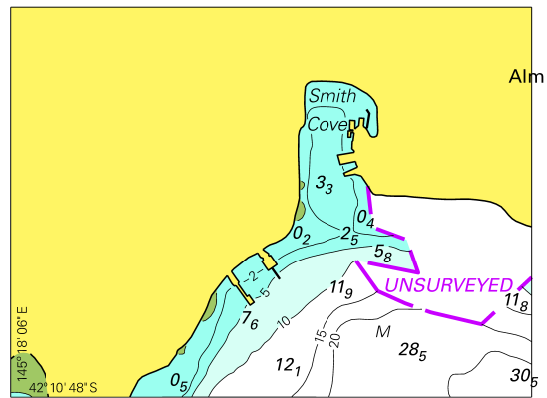


© Commonwealth of Australia 2016

Block for Chart Aus 155

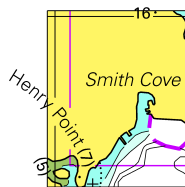
(101.3 x 124.0mm)

To accompany Australian Notice to Mariners 511/2016



© Commonwealth of Australia 2016  
Block A for Chart Aus 177 (68.9 x 51.5mm)

*To accompany Australian Notice to Mariners 511/2016*



© Commonwealth of Australia 2016  
*Block B for Chart Aus 177* (18.4 x 23.3mm)