

To accompany Australian Notice to Mariners 384/2016

REEF AND SHOAL DELIMITATION

Where the limits of reefs and shoals have not been surveyed, the limit may have been determined from another source. These delimitations are not conclusive and dangers may exist outside the charted limits. Features considered to be reef and shoal areas are depicted by national symbology. For details see Seafarers Handbook for Australian Waters AHP 20.

Note for chart Aus 616

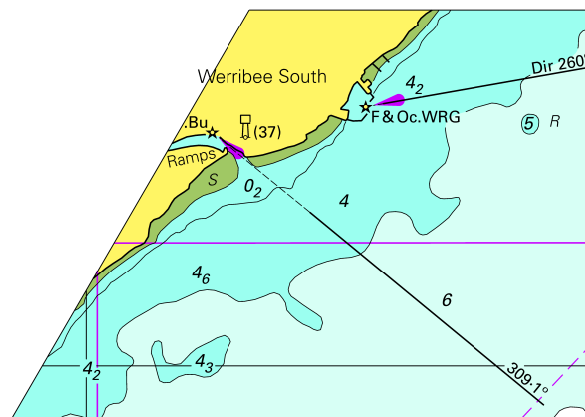
To accompany Australian Notice to Mariners 384/2016

REEF AND SHOAL DELIMITATION

Where the limits of reefs and shoals have not been surveyed, the limit may have been determined from another source. These delimitations are not conclusive and dangers may exist outside the charted limits. Features considered to be reef and shoal areas are depicted by national symbology. For details see Seafarers Handbook for Australian Waters AHP 20.

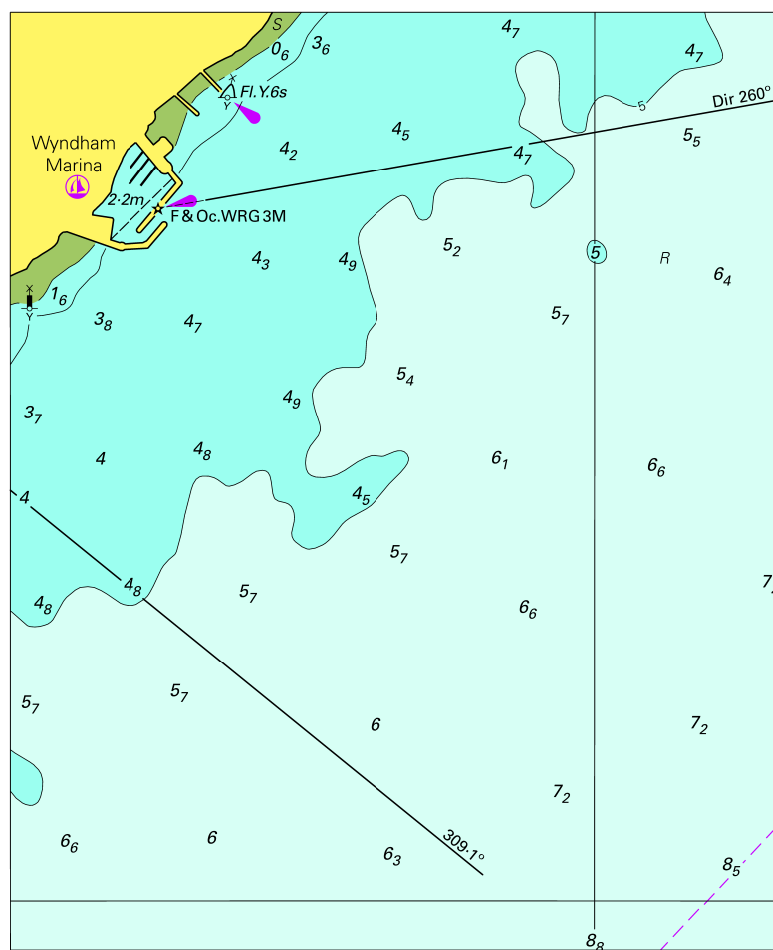
Note for chart Aus 617

To accompany Australian Notice to Mariners 508/2016



© Commonwealth of Australia 2016
 Block for Chart Aus 143 (45.5
 76.9 x 54.0mm)

To accompany Australian Notice to Mariners 508/2016

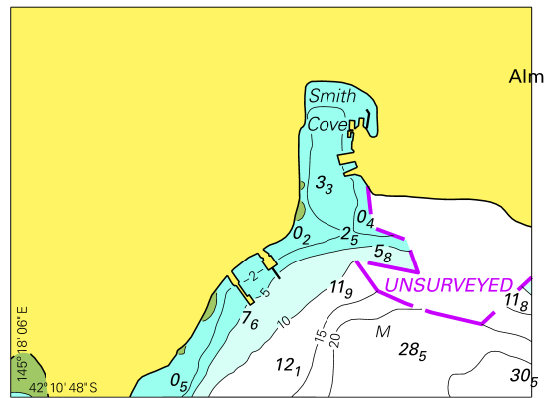


© Commonwealth of Australia 2016

Block for Chart Aus 155

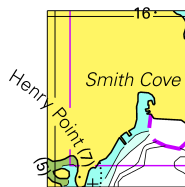
(101.3 x 124.0mm)

To accompany Australian Notice to Mariners 511/2016



© Commonwealth of Australia 2016
Block A for Chart Aus 177 (68.9 x 51.5mm)

To accompany Australian Notice to Mariners 511/2016



© Commonwealth of Australia 2016
Block B for Chart Aus 177 (18.4 x 23.3mm)