

To accompany Australian Notice to Mariners 384/2016

REEF AND SHOAL DELIMITATION

Where the limits of reefs and shoals have not been surveyed, the limit may have been determined from another source. These delimitations are not conclusive and dangers may exist outside the charted limits. Features considered to be reef and shoal areas are depicted by national symbology. For details see Seafarers Handbook for Australian Waters AHP 20.

Note for chart Aus 611

To accompany Australian Notice to Mariners 384/2016

REEF AND SHOAL DELIMITATION

Where the limits of reefs and shoals have not been surveyed, the limit may have been determined from another source. These delimitations are not conclusive and dangers may exist outside the charted limits. Features considered to be reef and shoal areas are depicted by national symbology. For details see Seafarers Handbook for Australian Waters AHP 20.

Note for chart Aus 612

To accompany Australian Notice to Mariners 384/2016

MILITARY EXERCISE AREA

Military operations are conducted within the area of this chart. For area limits and details see Seafarers Handbook for Australian Waters AHP 20.

Note for chart Aus 616

To accompany Australian Notice to Mariners 384/2016

REEF AND SHOAL DELIMITATION

Where the limits of reefs and shoals have not been surveyed, the limit may have been determined from another source. These delimitations are not conclusive and dangers may exist outside the charted limits. Features considered to be reef and shoal areas are depicted by national symbology. For details see Seafarers Handbook for Australian Waters AHP 20.

Note for chart Aus 821

To accompany Australian Notice to Mariners 384/2016

MILITARY EXERCISE AREA

Military operations are conducted within the area of this chart. For area limits and details see Seafarers Handbook for Australian Waters AHP 20.

Note for chart Aus 612

To accompany Australian Notice to Mariners 384/2016

MILITARY EXERCISE AREA

Military operations are conducted within the area of this chart. For area limits and details see Seafarers Handbook for Australian Waters AHP 20.

Note for chart Aus 614

To accompany Australian Notice to Mariners 384/2016

MILITARY EXERCISE AREA

Military operations are conducted within the area of this chart. For area limits and details see Seafarers Handbook for Australian Waters AHP 20.

Note for chart Aus 617

To accompany Australian Notice to Mariners 384/2016

REEF AND SHOAL DELIMITATION

Where the limits of reefs and shoals have not been surveyed, the limit may have been determined from another source. These delimitations are not conclusive and dangers may exist outside the charted limits. Features considered to be reef and shoal areas are depicted by national symbology. For details see Seafarers Handbook for Australian Waters AHP 20.

Note for chart Aus 824

To accompany Australian Notice to Mariners 384/2016

REEF AND SHOAL DELIMITATION

Where the limits of reefs and shoals have not been surveyed, the limit may have been determined from another source. These delimitations are not conclusive and dangers may exist outside the charted limits. Features considered to be reef and shoal areas are depicted by national symbology. For details see Seafarers Handbook for Australian Waters AHP 20.

Note for chart Aus 825

To accompany Australian Notice to Mariners 385/2016

REEF AND SHOAL DELIMITATION

Where the limits of reefs and shoals have not been surveyed, the limit may have been determined from another source. These delimitations are not conclusive and dangers may exist outside the charted limits. Features considered to be reef and shoal areas are depicted by national symbology. For details see Seafarers Handbook for Australian Waters AHP 20.

Note for chart Aus 378

To accompany Australian Notice to Mariners 385/2016

FORMER MINED AREA

Former mined areas of this chart have been swept and are open to surface navigation only. They are not safe for anchoring, trawling, bottoming by submarines or seabed activities. For details see Seafarers Handbook for Australian Waters AHP 20.

Note for chart Aus 399

To accompany Australian Notice to Mariners 385/2016

UNEXPLODED ORDNANCE (UXO)

The area is safe for surface navigation only; it is not safe for anchoring, trawling or seabed activities. For details see Seafarers Handbook for Australian Waters AHP 20.

Note for chart Aus 507

To accompany Australian Notice to Mariners 385/2016

REEF AND SHOAL DELIMITATION

Where the limits of reefs and shoals have not been surveyed, the limit may have been determined from another source. These delimitations are not conclusive and dangers may exist outside the charted limits. Features considered to be reef and shoal areas are depicted by national symbology. For details see Seafarers Handbook for Australian Waters AHP 20.

Note for chart Aus 377

To accompany Australian Notice to Mariners 385/2016

FORMER MINED AREA

The approaches to Kavieng have been swept and are open to surface navigation only. They are not safe for anchoring, trawling, or bottoming by submarines. For details see Seafarers Handbook for Australian Waters AHP 20.

Note for chart Aus 393

To accompany Australian Notice to Mariners 385/2016

FORMER MINED AREA

The approaches to Port Moresby have been swept and are open to surface navigation only. They are not safe for anchoring, trawling, bottoming by submarines or seabed activities. For details see Seafarers Handbook for Australian Waters AHP 20.

Note for chart Aus 505

To accompany Australian Notice to Mariners 385/2016

REEF AND SHOAL DELIMITATION

Where the limits of reefs and shoals have not been surveyed, the limit may have been determined from another source. These delimitations are not conclusive and dangers may exist outside the charted limits. Features considered to be reef and shoal areas are depicted by national symbology. For details see Seafarers Handbook for Australian Waters AHP 20.

Note for chart Aus 507

To accompany Australian Notice to Mariners 385/2016

UNEXPLODED ORDNANCE (UXO)

The area is safe for surface navigation only; it is not safe for anchoring, trawling or seabed activities. For details see Seafarers Handbook for Australian Waters AHP 20.

Note for chart Aus 508

To accompany Australian Notice to Mariners 385/2016

REEF AND SHOAL DELIMITATION

Where the limits of reefs and shoals have not been surveyed, the limit may have been determined from another source. These delimitations are not conclusive and dangers may exist outside the charted limits. Features considered to be reef and shoal areas are depicted by national symbology. For details see Seafarers Handbook for Australian Waters AHP 20.

Note for chart Aus 509

To accompany Australian Notice to Mariners 385/2016

REEF AND SHOAL DELIMITATION

Where the limits of reefs and shoals have not been surveyed, the limit may have been determined from another source. These delimitations are not conclusive and dangers may exist outside the charted limits. Features considered to be reef and shoal areas are depicted by national symbology. For details see Seafarers Handbook for Australian Waters AHP 20.

Note for chart Aus 511

To accompany Australian Notice to Mariners 385/2016

REEF AND SHOAL DELIMITATION

Where the limits of reefs and shoals have not been surveyed, the limit may have been determined from another source. These delimitations are not conclusive and dangers may exist outside the charted limits. Features considered to be reef and shoal areas are depicted by national symbology. For details see Seafarers Handbook for Australian Waters AHP 20.

Note for chart Aus 513

To accompany Australian Notice to Mariners 385/2016

REEF AND SHOAL DELIMITATION

Where the limits of reefs and shoals have not been surveyed, the limit may have been determined from another source. These delimitations are not conclusive and dangers may exist outside the charted limits. Features considered to be reef and shoal areas are depicted by national symbology. For details see Seafarers Handbook for Australian Waters AHP 20.

Note for chart Aus 508

To accompany Australian Notice to Mariners 385/2016

REEF AND SHOAL DELIMITATION

Where the limits of reefs and shoals have not been surveyed, the limit may have been determined from another source. These delimitations are not conclusive and dangers may exist outside the charted limits. Features considered to be reef and shoal areas are depicted by national symbology. For details see Seafarers Handbook for Australian Waters AHP 20.

Note for chart Aus 510

To accompany Australian Notice to Mariners 385/2016

REEF AND SHOAL DELIMITATION

Where the limits of reefs and shoals have not been surveyed, the limit may have been determined from another source. These delimitations are not conclusive and dangers may exist outside the charted limits. Features considered to be reef and shoal areas are depicted by national symbology. For details see Seafarers Handbook for Australian Waters AHP 20.

Note for chart Aus 512

To accompany Australian Notice to Mariners 385/2016

REEF AND SHOAL DELIMITATION

Where the limits of reefs and shoals have not been surveyed, the limit may have been determined from another source. These delimitations are not conclusive and dangers may exist outside the charted limits. Features considered to be reef and shoal areas are depicted by national symbology. For details see Seafarers Handbook for Australian Waters AHP 20.

Note for chart Aus 514

To accompany Australian Notice to Mariners 385/2016

REEF AND SHOAL DELIMITATION

Where the limits of reefs and shoals have not been surveyed, the limit may have been determined from another source. These delimitations are not conclusive and dangers may exist outside the charted limits. Features considered to be reef and shoal areas are depicted by national symbology. For details see Seafarers Handbook for Australian Waters AHP 20.

Note for chart Aus 515

To accompany Australian Notice to Mariners 385/2016

REEF AND SHOAL DELIMITATION

Where the limits of reefs and shoals have not been surveyed, the limit may have been determined from another source. These delimitations are not conclusive and dangers may exist outside the charted limits. Features considered to be reef and shoal areas are depicted by national symbology. For details see Seafarers Handbook for Australian Waters AHP 20.

Note for chart Aus 517

To accompany Australian Notice to Mariners 385/2016

REEF AND SHOAL DELIMITATION

Where the limits of reefs and shoals have not been surveyed, the limit may have been determined from another source. These delimitations are not conclusive and dangers may exist outside the charted limits. Features considered to be reef and shoal areas are depicted by national symbology. For details see Seafarers Handbook for Australian Waters AHP 20.

Note for chart Aus 519

To accompany Australian Notice to Mariners 385/2016

FORMER MINED AREA

The approaches to Kavieng have been swept and are open to surface navigation only. They are not safe for anchoring, trawling, or bottoming by submarines. For details see Seafarers Handbook for Australian Waters AHP 20.

Note for chart Aus 543

To accompany Australian Notice to Mariners 385/2016

REEF AND SHOAL DELIMITATION

Where the limits of reefs and shoals have not been surveyed, the limit may have been determined from another source. These delimitations are not conclusive and dangers may exist outside the charted limits. Features considered to be reef and shoal areas are depicted by national symbology. For details see Seafarers Handbook for Australian Waters AHP 20.

Note for chart Aus 516

To accompany Australian Notice to Mariners 385/2016

REEF AND SHOAL DELIMITATION

Where the limits of reefs and shoals have not been surveyed, the limit may have been determined from another source. These delimitations are not conclusive and dangers may exist outside the charted limits. Features considered to be reef and shoal areas are depicted by national symbology. For details see Seafarers Handbook for Australian Waters AHP 20.

Note for chart Aus 518

To accompany Australian Notice to Mariners 385/2016

REEF AND SHOAL DELIMITATION

Where the limits of reefs and shoals have not been surveyed, the limit may have been determined from another source. These delimitations are not conclusive and dangers may exist outside the charted limits. Features considered to be reef and shoal areas are depicted by national symbology. For details see Seafarers Handbook for Australian Waters AHP 20.

Note for chart Aus 520

To accompany Australian Notice to Mariners 385/2016

FORMER MINED AREA

The approaches to Port Moresby have been swept and are open to surface navigation only. They are not safe for anchoring, trawling, bottoming by submarines or seabed activities. For details see Seafarers Handbook for Australian Waters AHP 20.

Note for chart Aus 621

To accompany Australian Notice to Mariners 385/2016

FORMER MINED AREA

The approaches to Port Moresby have been swept and are open to surface navigation only. They are not safe for anchoring, trawling, bottoming by submarines or seabed activities. For details see Seafarers Handbook for Australian Waters AHP 20.

Note for chart Aus 622

To accompany Australian Notice to Mariners 385/2016

REEF AND SHOAL DELIMITATION

Where the limits of reefs and shoals have not been surveyed, the limit may have been determined from another source. These delimitations are not conclusive and dangers may exist outside the charted limits. Features considered to be reef and shoal areas are depicted by national symbology. For details see Seafarers Handbook for Australian Waters AHP 20.

Note for chart Aus 631

To accompany Australian Notice to Mariners 385/2016

FORMER MINED AREA

The approaches to Kavieng have been swept and are open to surface navigation only. They are not safe for anchoring, trawling, or bottoming by submarines. For details see Seafarers Handbook for Australian Waters AHP 20.

Note for chart Aus 666

To accompany Australian Notice to Mariners 387/2016

MILITARY EXERCISE AREA

Military operations are conducted within the area of this chart. For area limits and details see Seafarers Handbook for Australian Waters AHP 20.

Note for chart Aus 62

To accompany Australian Notice to Mariners 387/2016

MILITARY EXERCISE AREA

Military operations are conducted within the area of this chart. For area limits and details see Seafarers Handbook for Australian Waters AHP 20.

Note for chart Aus 65

To accompany Australian Notice to Mariners 385/2016

REEF AND SHOAL DELIMITATION

Where the limits of reefs and shoals have not been surveyed, the limit may have been determined from another source. These delimitations are not conclusive and dangers may exist outside the charted limits. Features considered to be reef and shoal areas are depicted by national symbology. For details see Seafarers Handbook for Australian Waters AHP 20.

Note for chart Aus 625

To accompany Australian Notice to Mariners 385/2016

REEF AND SHOAL DELIMITATION

Where the limits of reefs and shoals have not been surveyed, the limit may have been determined from another source. These delimitations are not conclusive and dangers may exist outside the charted limits. Features considered to be reef and shoal areas are depicted by national symbology. For details see Seafarers Handbook for Australian Waters AHP 20.

Note for chart Aus 635

To accompany Australian Notice to Mariners 385/2016

FORMER MINED AREA

Former mined areas of this chart have been swept and are open to surface navigation only. They are not safe for anchoring, trawling, bottoming by submarines or seabed activities. For details see Seafarers Handbook for Australian Waters AHP 20.

Note for chart Aus 684

To accompany Australian Notice to Mariners 387/2016

MILITARY EXERCISE AREA

Military operations are conducted within the area of this chart. For area limits and details see Seafarers Handbook for Australian Waters AHP 20.

Note for chart Aus 64

To accompany Australian Notice to Mariners 387/2016

MILITARY EXERCISE AREA

Military operations are conducted within the area of this chart. For area limits and details see Seafarers Handbook for Australian Waters AHP 20.

Note for chart Aus 66

To accompany Australian Notice to Mariners 387/2016

MILITARY EXERCISE AREA
Military operations are conducted within the area of this chart. For area limits and details see Seafarers Handbook for Australian Waters AHP 20.

Note for chart Aus 67

To accompany Australian Notice to Mariners 387/2016

MILITARY EXERCISE AREA
Military operations are conducted within the area of this chart. For area limits and details see Seafarers Handbook for Australian Waters AHP 20.

Note for chart Aus 84

To accompany Australian Notice to Mariners 387/2016

UNEXPLODED ORDNANCE (UXO)
The area is safe for surface navigation only; it is not safe for anchoring, trawling or seabed activities. For details see Seafarers Handbook for Australian Waters AHP 20.

Note for chart Aus 309

To accompany Australian Notice to Mariners 387/2016

UNEXPLODED ORDNANCE (UXO)
The area is safe for surface navigation only; it is not safe for anchoring, trawling or seabed activities. For details see Seafarers Handbook for Australian Waters AHP 20.

Note for chart Aus 314

To accompany Australian Notice to Mariners 387/2016

MILITARY EXERCISE AREA
Military operations are conducted within the area of this chart. For area limits and details see Seafarers Handbook for Australian Waters AHP 20.

Note for chart Aus 324

To accompany Australian Notice to Mariners 387/2016

MILITARY EXERCISE AREA
Military operations are conducted within the area of this chart. For area limits and details see Seafarers Handbook for Australian Waters AHP 20.

Note for chart Aus 331

To accompany Australian Notice to Mariners 387/2016

MILITARY EXERCISE AREA
Military operations are conducted within the area of this chart. For area limits and details see Seafarers Handbook for Australian Waters AHP 20.

Note for chart Aus 72

To accompany Australian Notice to Mariners 387/2016

MILITARY EXERCISE AREA
Military operations are conducted within the area of this chart. For area limits and details see Seafarers Handbook for Australian Waters AHP 20.

Note for chart Aus 105

To accompany Australian Notice to Mariners 387/2016

MILITARY EXERCISE AREA
Military operations are conducted within the area of this chart. For area limits and details see Seafarers Handbook for Australian Waters AHP 20.

Note for chart Aus 309

To accompany Australian Notice to Mariners 387/2016

UNEXPLODED ORDNANCE (UXO)
The area is safe for surface navigation only; it is not safe for anchoring, trawling or seabed activities. For details see Seafarers Handbook for Australian Waters AHP 20.

Note for chart Aus 315

To accompany Australian Notice to Mariners 387/2016

MILITARY EXERCISE AREA
Military operations are conducted within the area of this chart. For area limits and details see Seafarers Handbook for Australian Waters AHP 20.

Note for chart Aus 329

To accompany Australian Notice to Mariners 387/2016

MILITARY EXERCISE AREA
Military operations are conducted within the area of this chart. For area limits and details see Seafarers Handbook for Australian Waters AHP 20.

Note for chart Aus 335

To accompany Australian Notice to Mariners 387/2016

MILITARY EXERCISE AREA

Military operations are conducted within the area of this chart. For area limits and details see Seafarers Handbook for Australian Waters AHP 20.

Note for chart Aus 726

To accompany Australian Notice to Mariners 387/2016

MILITARY EXERCISE AREA

Military operations are conducted within the area of this chart. For area limits and details see Seafarers Handbook for Australian Waters AHP 20.

Note for chart Aus 743

To accompany Australian Notice to Mariners 387/2016

MILITARY EXERCISE AREA

Military operations are conducted within the area of this chart. For area limits and details see Seafarers Handbook for Australian Waters AHP 20.

Note for chart Aus 745

To accompany Australian Notice to Mariners 387/2016

MILITARY EXERCISE AREA

Military operations are conducted within the area of this chart. For area limits and details see Seafarers Handbook for Australian Waters AHP 20.

Note for chart Aus 751

To accompany Australian Notice to Mariners 387/2016

MILITARY EXERCISE AREA

Military operations are conducted within the area of this chart. For area limits and details see Seafarers Handbook for Australian Waters AHP 20.

Note for chart Aus 755

To accompany Australian Notice to Mariners 393/2016

MILITARY EXERCISE AREA

Military operations are conducted within the area of this chart. For area limits and details see Seafarers Handbook for Australian Waters AHP 20.

Note for chart Aus 126

To accompany Australian Notice to Mariners 387/2016

FORMER MINED AREA

Mariners are warned that anchoring, trawling or bottoming by submarines in the area within a circle of radius one mile with centre in Lat 14°04'S, Long 126°40'E, is dangerous due to mines. See Seafarers Handbook for Australian Waters AHP 20.

Note for chart Aus 727

To accompany Australian Notice to Mariners 387/2016

UNEXPLODED ORDNANCE (UXO)

The area is safe for surface navigation only; it is not safe for anchoring, trawling or seabed activities. For details see Seafarers Handbook for Australian Waters AHP 20.

Note for chart Aus 743

To accompany Australian Notice to Mariners 387/2016

MILITARY EXERCISE AREA

Military operations are conducted within the area of this chart. For area limits and details see Seafarers Handbook for Australian Waters AHP 20.

Note for chart Aus 746

To accompany Australian Notice to Mariners 387/2016

MILITARY EXERCISE AREA

Military operations are conducted within the area of this chart. For area limits and details see Seafarers Handbook for Australian Waters AHP 20.

Note for chart Aus 752

To accompany Australian Notice to Mariners 387/2016

MILITARY EXERCISE AREA

Military operations are conducted within the area of this chart. For area limits and details see Seafarers Handbook for Australian Waters AHP 20.

Note for chart Aus 756

To accompany Australian Notice to Mariners 393/2016

MILITARY EXERCISE AREA

Military operations are conducted within the area of this chart. For area limits and details see Seafarers Handbook for Australian Waters AHP 20.

Note for chart Aus 129

To accompany Australian Notice to Mariners 393/2016

MILITARY EXERCISE AREA
Military operations are conducted within the area of this chart. For area limits and details see Seafarers Handbook for Australian Waters AHP 20.

Note for chart Aus 132

To accompany Australian Notice to Mariners 393/2016

MILITARY EXERCISE AREA
Military operations are conducted within the area of this chart. For area limits and details see Seafarers Handbook for Australian Waters AHP 20.

Note for chart Aus 139

To accompany Australian Notice to Mariners 393/2016

MILITARY EXERCISE AREA
Military operations are conducted within the area of this chart. For area limits and details see Seafarers Handbook for Australian Waters AHP 20.

Note for chart Aus 346

To accompany Australian Notice to Mariners 393/2016

MILITARY EXERCISE AREA
Military operations are conducted within the area of this chart. For area limits and details see Seafarers Handbook for Australian Waters AHP 20.

Note for chart Aus 485

To accompany Australian Notice to Mariners 393/2016

MILITARY EXERCISE AREA
Military operations are conducted within the area of this chart. For area limits and details see Seafarers Handbook for Australian Waters AHP 20.

Note for chart Aus 780

To accompany Australian Notice to Mariners 394/2016

UNEXPLODED ORDNANCE (UXO)
The area is safe for surface navigation only; it is not safe for anchoring, trawling or seabed activities. For details see Seafarers Handbook for Australian Waters AHP 20.

Note for chart Aus 143

To accompany Australian Notice to Mariners 393/2016

MILITARY EXERCISE AREA
Military operations are conducted within the area of this chart. For area limits and details see Seafarers Handbook for Australian Waters AHP 20.

Note for chart Aus 136

To accompany Australian Notice to Mariners 393/2016

MILITARY EXERCISE AREA
Military operations are conducted within the area of this chart. For area limits and details see Seafarers Handbook for Australian Waters AHP 20.

Note for chart Aus 343

To accompany Australian Notice to Mariners 393/2016

MILITARY EXERCISE AREA
Military operations are conducted within the area of this chart. For area limits and details see Seafarers Handbook for Australian Waters AHP 20.

Note for chart Aus 347

To accompany Australian Notice to Mariners 393/2016

MILITARY EXERCISE AREA
Military operations are conducted within the area of this chart. For area limits and details see Seafarers Handbook for Australian Waters AHP 20.

Note for chart Aus 776

To accompany Australian Notice to Mariners 393/2016

MILITARY EXERCISE AREA
Military operations are conducted within the area of this chart. For area limits and details see Seafarers Handbook for Australian Waters AHP 20.

Note for chart Aus 781

To accompany Australian Notice to Mariners 394/2016

MILITARY EXERCISE AREA
Military operations are conducted within the area of this chart. For area limits and details see Seafarers Handbook for Australian Waters AHP 20.

Note for chart Aus 143

To accompany Australian Notice to Mariners 394/2016

MILITARY EXERCISE AREA
Military operations are conducted within the area of this chart. For area limits and details see Seafarers Handbook for Australian Waters AHP 20.

Note for chart Aus 150

To accompany Australian Notice to Mariners 394/2016

MILITARY EXERCISE AREA
Military operations are conducted within the area of this chart. For area limits and details see Seafarers Handbook for Australian Waters AHP 20.

Note for chart Aus 349

To accompany Australian Notice to Mariners 394/2016

MILITARY EXERCISE AREA
Military operations are conducted within the area of this chart. For area limits and details see Seafarers Handbook for Australian Waters AHP 20.

Note for chart Aus 487

To accompany Australian Notice to Mariners 394/2016

MILITARY EXERCISE AREA
Military operations are conducted within the area of this chart. For area limits and details see Seafarers Handbook for Australian Waters AHP 20.

Note for chart Aus 788

To accompany Australian Notice to Mariners 394/2016

MILITARY EXERCISE AREA
Military operations are conducted within the area of this chart. For area limits and details see Seafarers Handbook for Australian Waters AHP 20.

Note for chart Aus 802

To accompany Australian Notice to Mariners 398/2016

MILITARY EXERCISE AREA
Military operations are conducted within the area of this chart. For area limits and details see Seafarers Handbook for Australian Waters AHP 20.

Note for chart Aus 798

To accompany Australian Notice to Mariners 394/2016

UNEXPLODED ORDNANCE (UXO)
The area is safe for surface navigation only; it is not safe for anchoring, trawling or seabed activities. For details see Seafarers Handbook for Australian Waters AHP 20.

Note for chart Aus 158

To accompany Australian Notice to Mariners 394/2016

UNEXPLODED ORDNANCE (UXO)
The area is safe for surface navigation only; it is not safe for anchoring, trawling or seabed activities. For details see Seafarers Handbook for Australian Waters AHP 20.

Note for chart Aus 357

To accompany Australian Notice to Mariners 394/2016

UNEXPLODED ORDNANCE (UXO)
The area is safe for surface navigation only; it is not safe for anchoring, trawling or seabed activities. For details see Seafarers Handbook for Australian Waters AHP 20.

Note for chart Aus 487

To accompany Australian Notice to Mariners 394/2016

MILITARY EXERCISE AREA
Military operations are conducted within the area of this chart. For area limits and details see Seafarers Handbook for Australian Waters AHP 20.

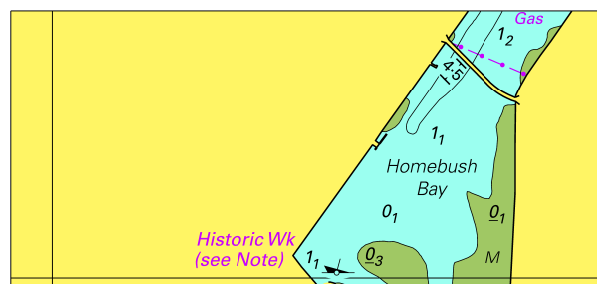
Note for chart Aus 801

To accompany Australian Notice to Mariners 394/2016

UNEXPLODED ORDNANCE (UXO)
The area is safe for surface navigation only; it is not safe for anchoring, trawling or seabed activities. For details see Seafarers Handbook for Australian Waters AHP 20.

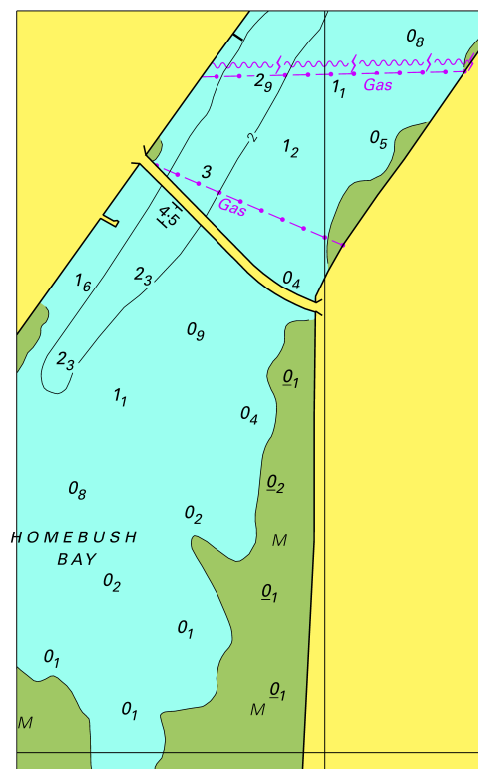
Note for chart Aus 802

To accompany Australian Notice to Mariners 378/2016



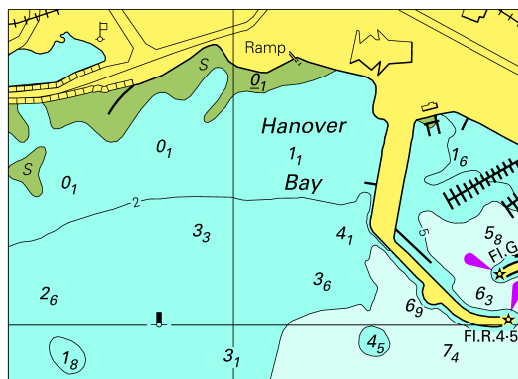
© Commonwealth of Australia 2016
Block for Chart Aus 200 (78.8 X 36.5mm)

To accompany Australian Notice to Mariners 378/2016



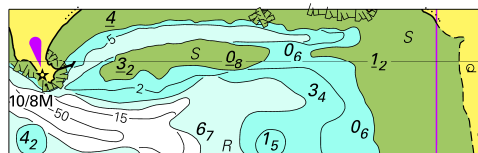
© Commonwealth of Australia 2016
Block for Chart Aus 203 (62.0 X 100.6mm)

To accompany Australian Notice to Mariners 388/2016



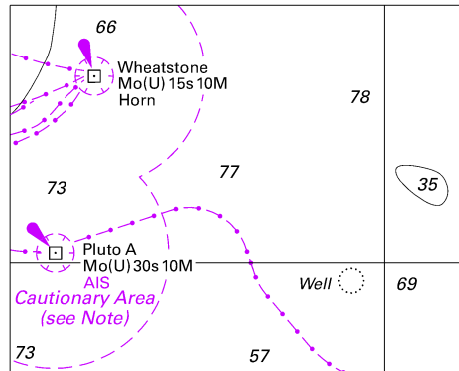
© Commonwealth of Australia 2016
Block for Chart Aus 109 (68.5 X 49.0mm)

To accompany Australian Notice to Mariners 389/2016



© Commonwealth of Australia 2016
Block for Chart Aus 324 (63.0 X 19.3mm)

To accompany Australian Notice to Mariners 392/2016

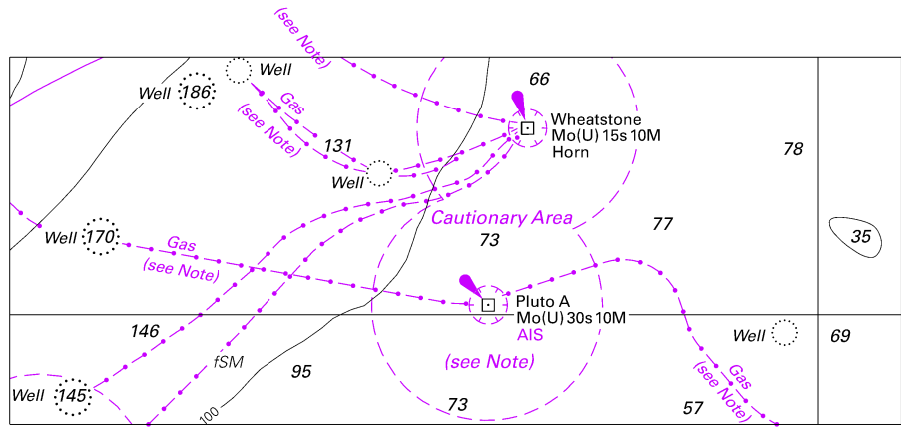


Block for Chart Aus 327

(60.5 X 48.6mm)

© Commonwealth of Australia 2016

To accompany Australian Notice to Mariners 392/2016



Block for Chart Aus 328 © Commonwealth of Australia 2016 (117.8 x 48.6mm)