

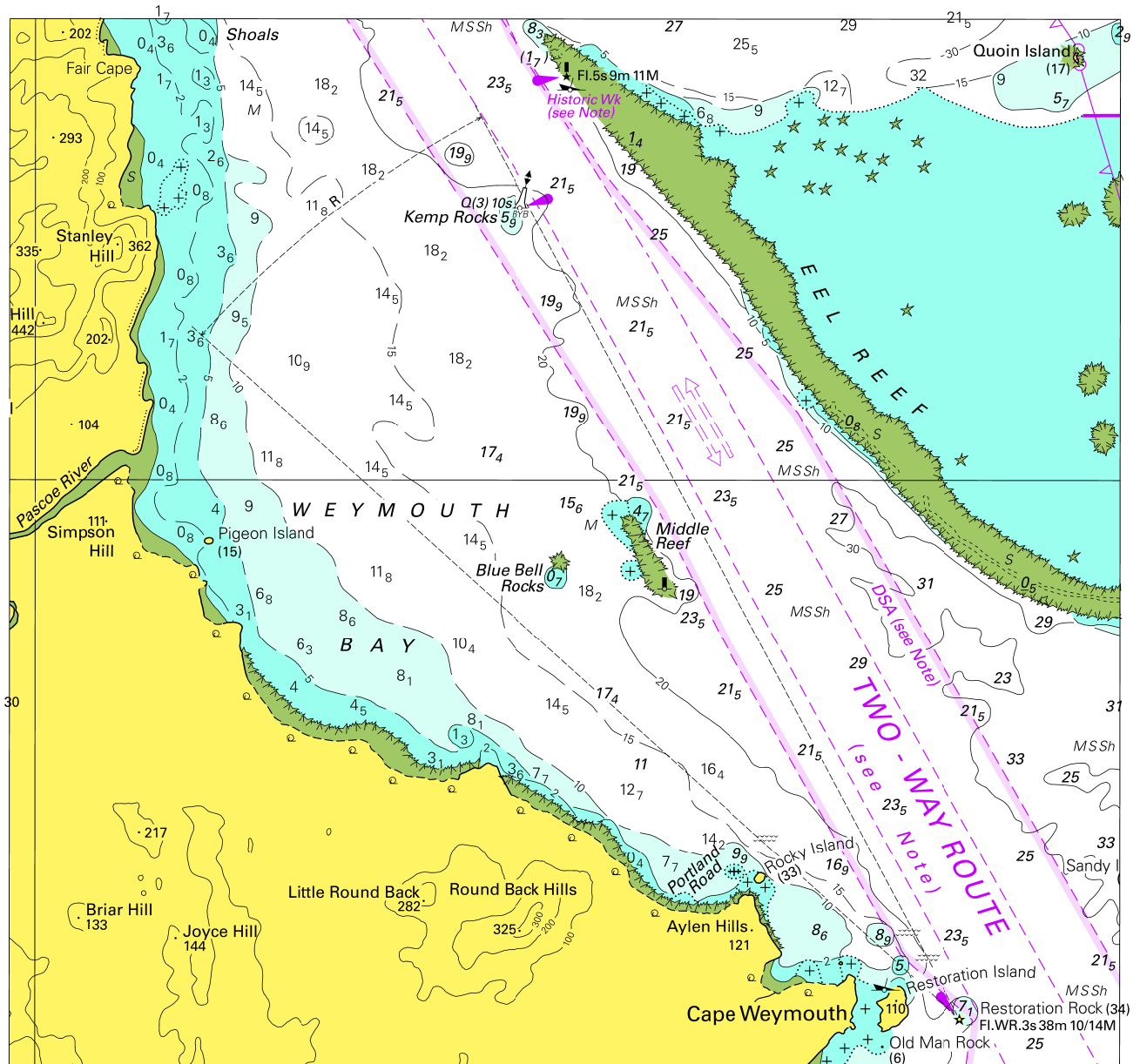
To accompany Australian Notice to Mariners 591/2016

ESTUARY AND RIVER ENTRANCES

The crossing of coastal bars and entry to rivers and estuaries is potentially dangerous. Bars and entrances are dynamic in nature, hence the depth and preferred approach may vary. Leading beacons and other navigational aids may not always indicate the best approach. If mariners are unsure of the condition at a particular bar or entrance, local information should be sought prior to crossing.

Note for chart Aus 235

To accompany Australian Notice to Mariners 592/2016

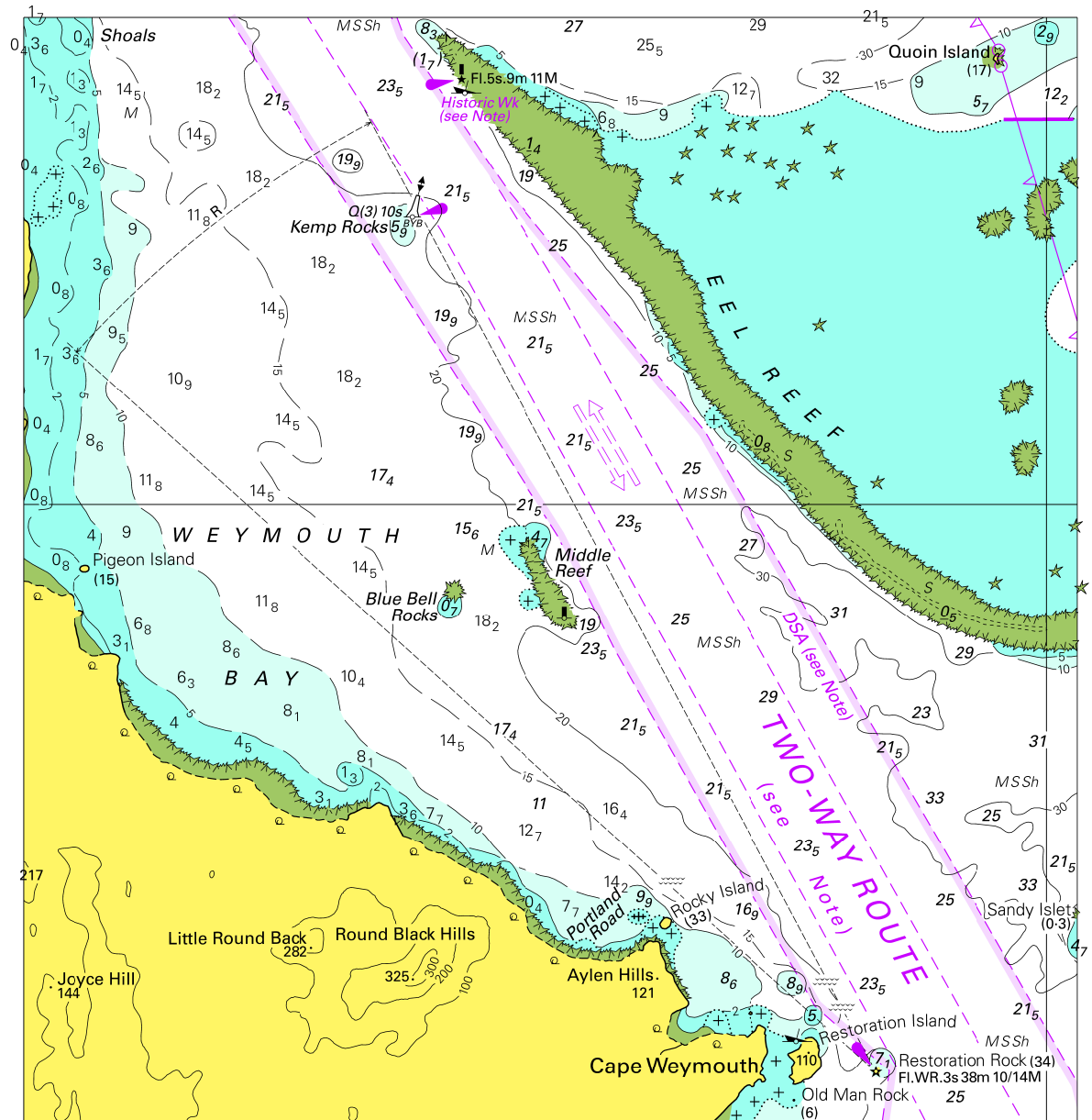


Block for Chart Aus 834

© Commonwealth of Australia 2016

(168.6 x 158.7mm)

To accompany Australian Notice to Mariners 592/2016

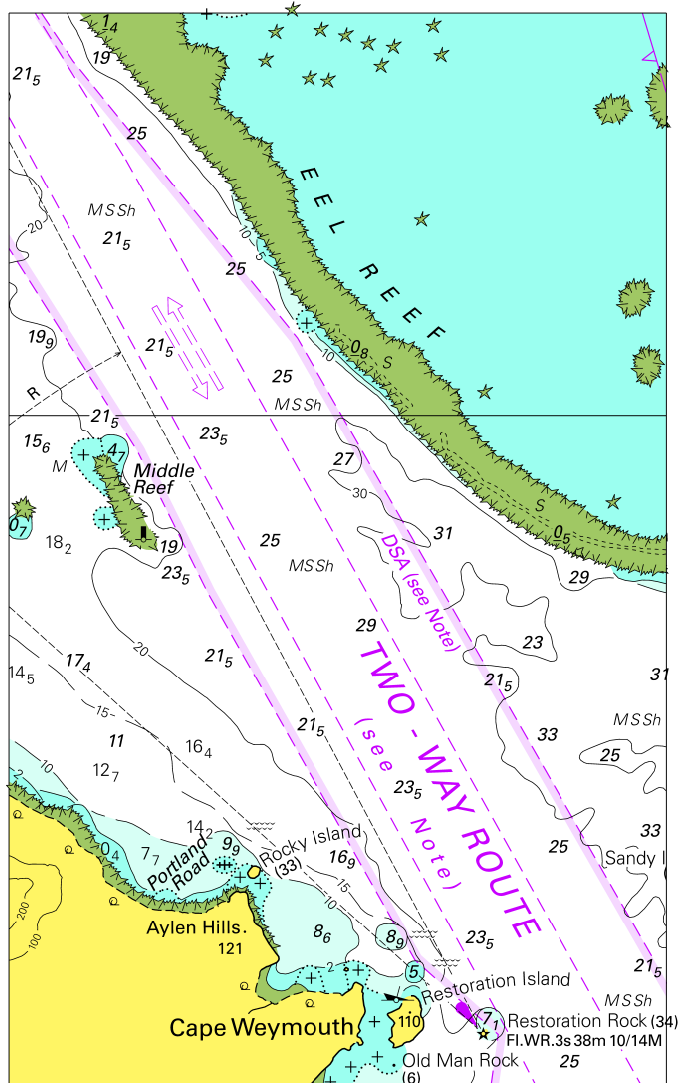


Block for Chart Aus 835

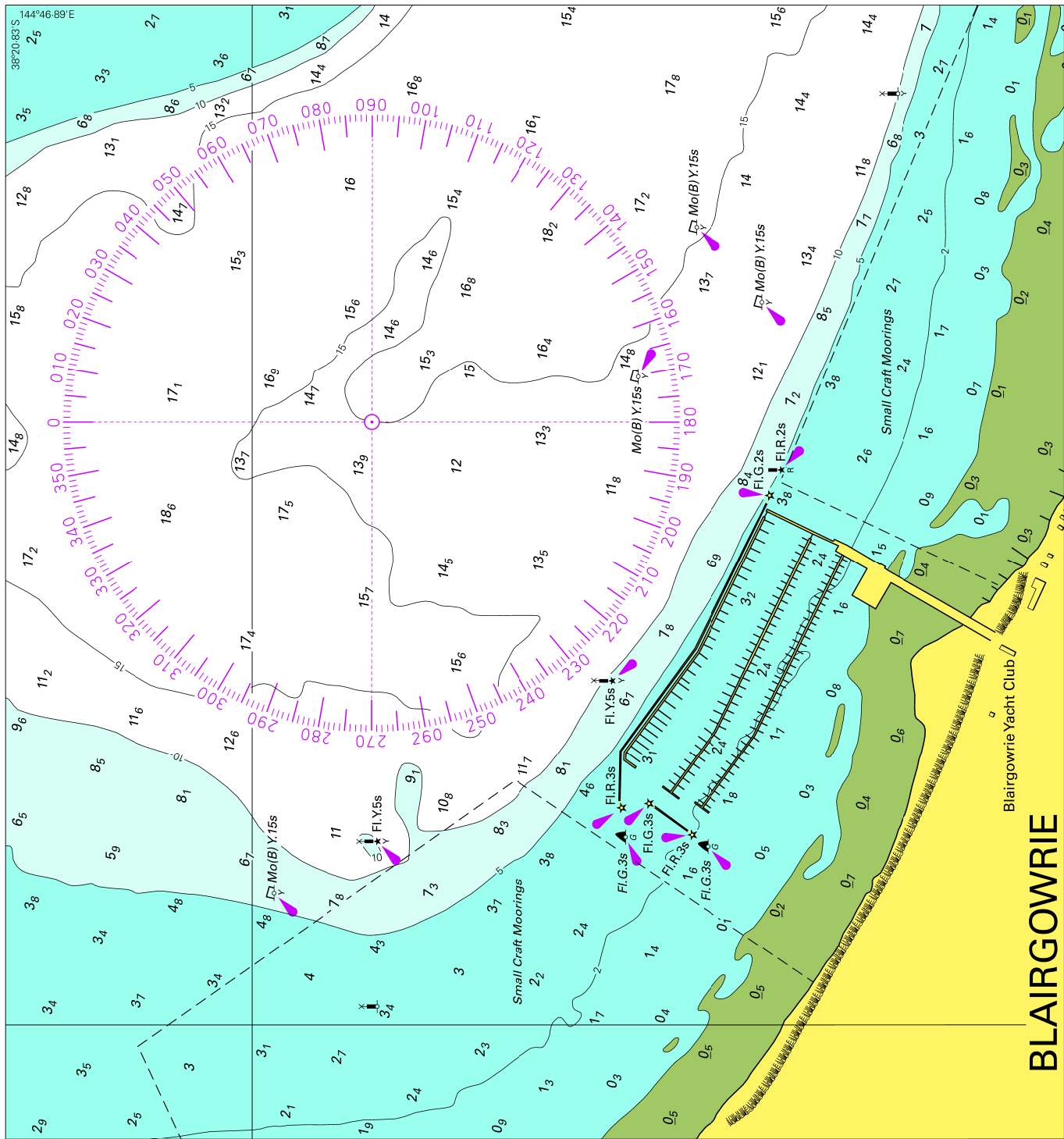
© Commonwealth of Australia 2016

(151.9 x 159.2mm)

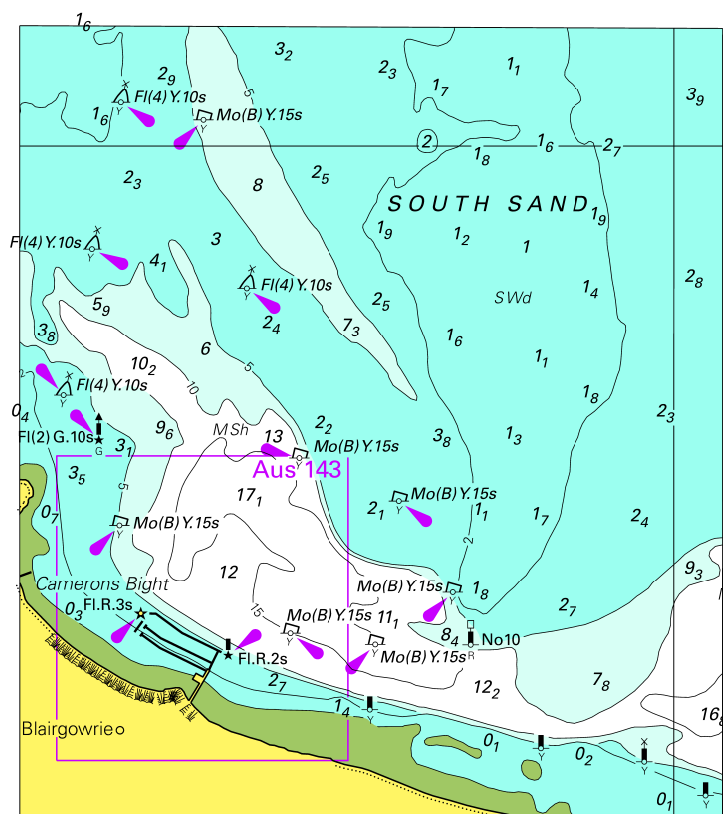
To accompany Australian Notice to Mariners 592/2016



© Commonwealth of Australia 2016
 Block for Chart Aus 836 (86.9 x 141.9mm)

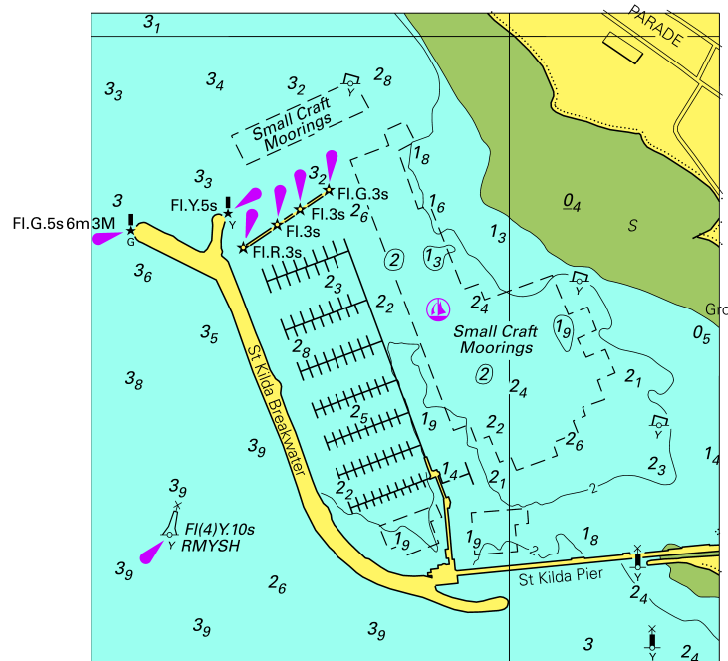


To accompany Australian Notice to Mariners 597/2016



© Commonwealth of Australia 2016
 Block for Chart Aus 158 (92.9 x 104.9mm)

To accompany Australian Notice to Mariners 599/2016

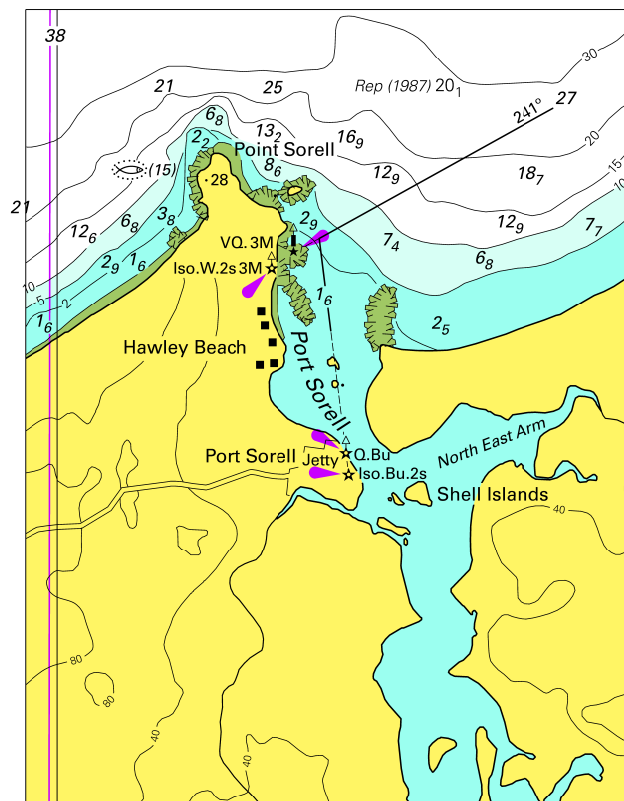


© Commonwealth of Australia 2016

Block for Chart Aus 155

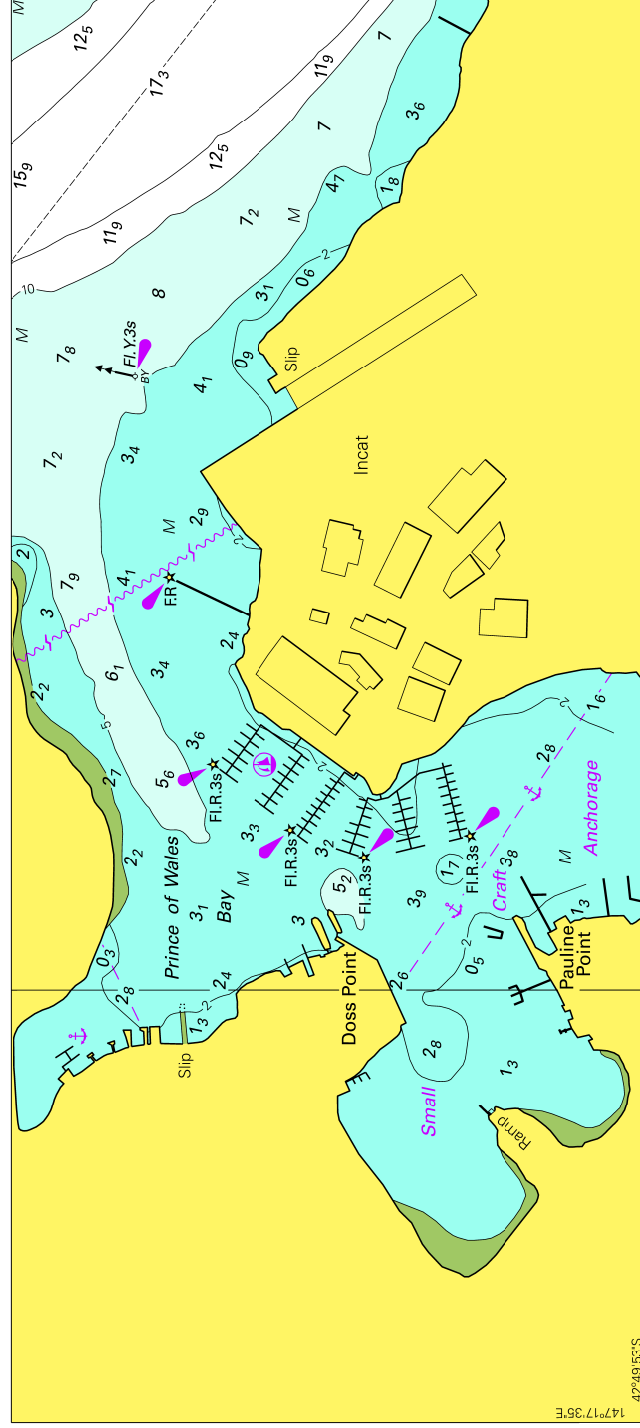
(83.0 x 86.0mm)

To accompany Australian Notice to Mariners 600/2016



© Commonwealth of Australia 2016
 Block for Chart Aus 799 (80.2 x 105.1mm)

To accompany Australian Notice to Mariners 601/2016

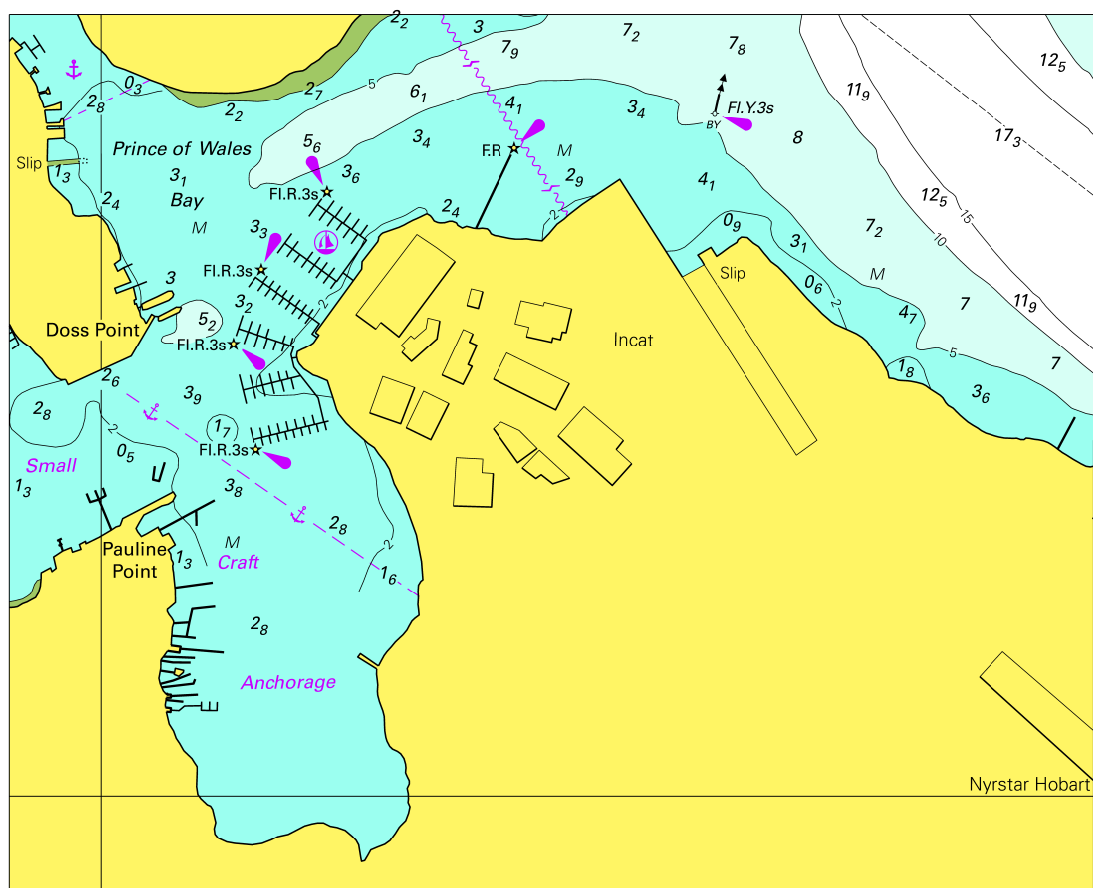


Block B for Chart Aus 172

© Commonwealth of Australia 2016

(188.6 x 83.8mm)

To accompany Australian Notice to Mariners 601/2016



Block A for Chart Aus 172

© Commonwealth of Australia 2016

(143.2 x 116.2mm)

