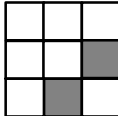


Previous Notice 1168/2010

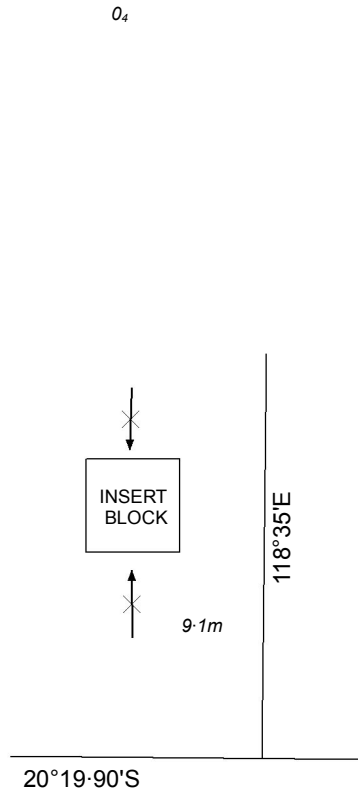
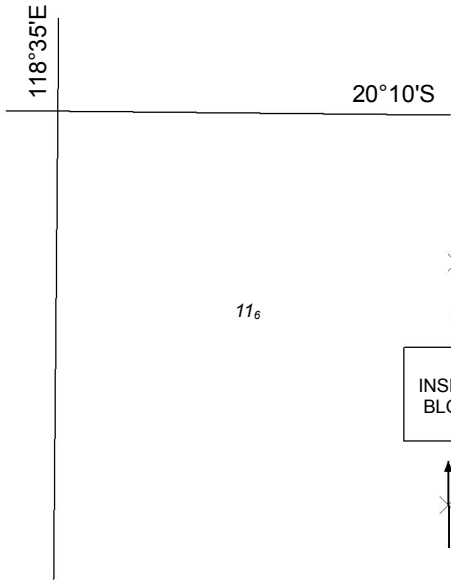
NTM 98/2012



Australian Government
Department of Defence

AUS 52

© Commonwealth of Australia 2012



Previous Notice 1168/2010

NTM 98/2012

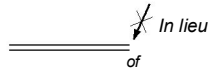


Australian Government
Department of Defence

AUS 53

© Commonwealth of Australia 2012

Fl.8s 47m 18M

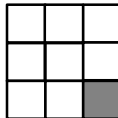


152°15'E

4°15'S

Previous Notice 1300/2010

NTM 96/2012



AUS 545

© Commonwealth of Australia 2012

20°22'S

26₃

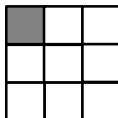


22₂

117°5'E

Previous Notice NC 18/11/2011

NTM 99/2012



Australian Government
Department of Defence

AUS 55

© Commonwealth of Australia 2012

395

Fl.8s 47m 18M
In lieu
of

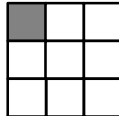
238

152° 15'E

4° 15'S

Previous Notice 296/2011

NTM 96/2012



AUS 554

© Commonwealth of Australia 2012

20°35'S

116°30'E

10₈

Moorings

7₅

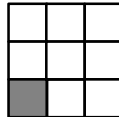
of
of
of

Moorings

9₃

Previous Notice 1130/2011

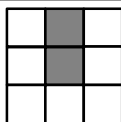
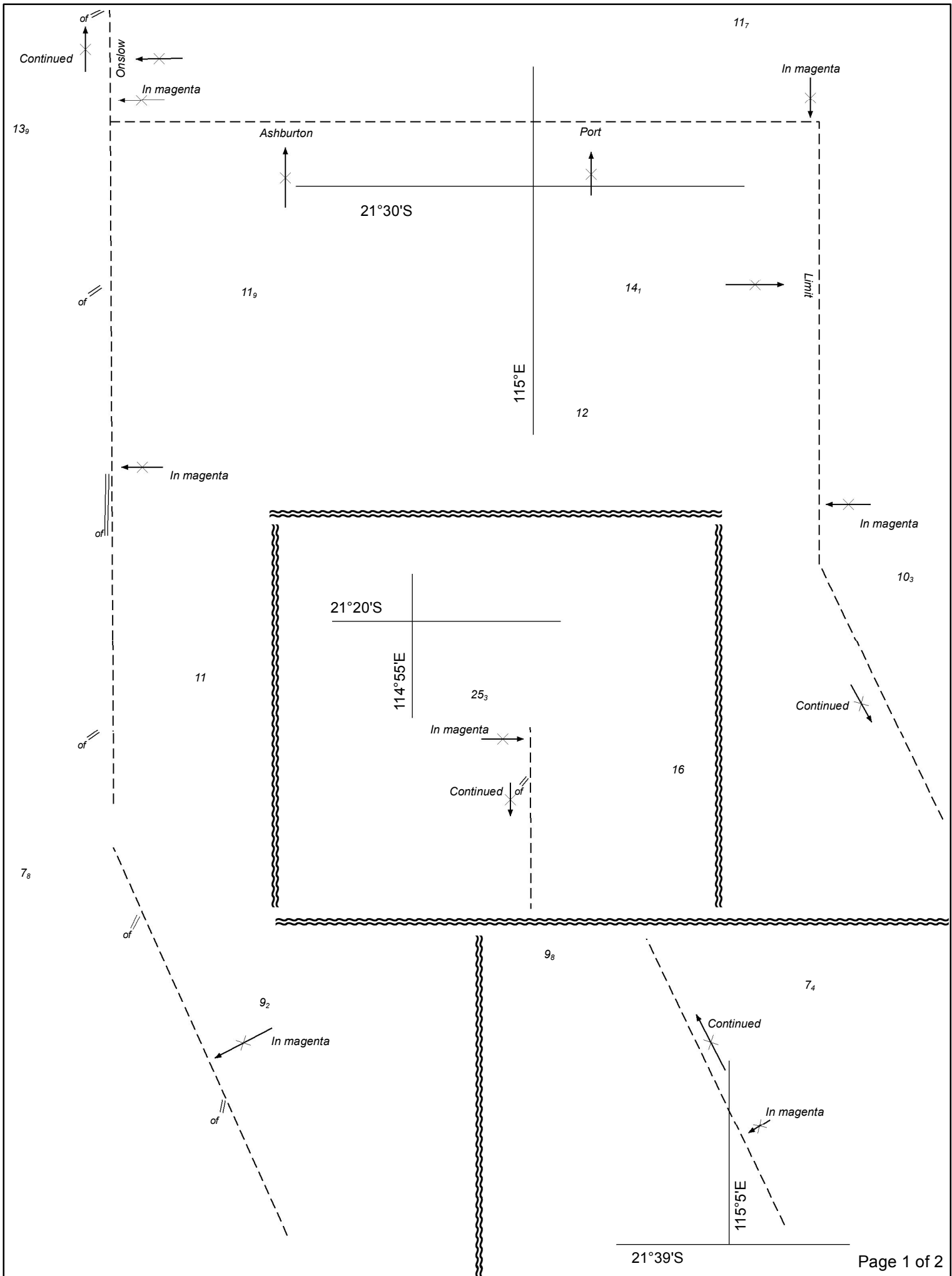
NTM 100/2012

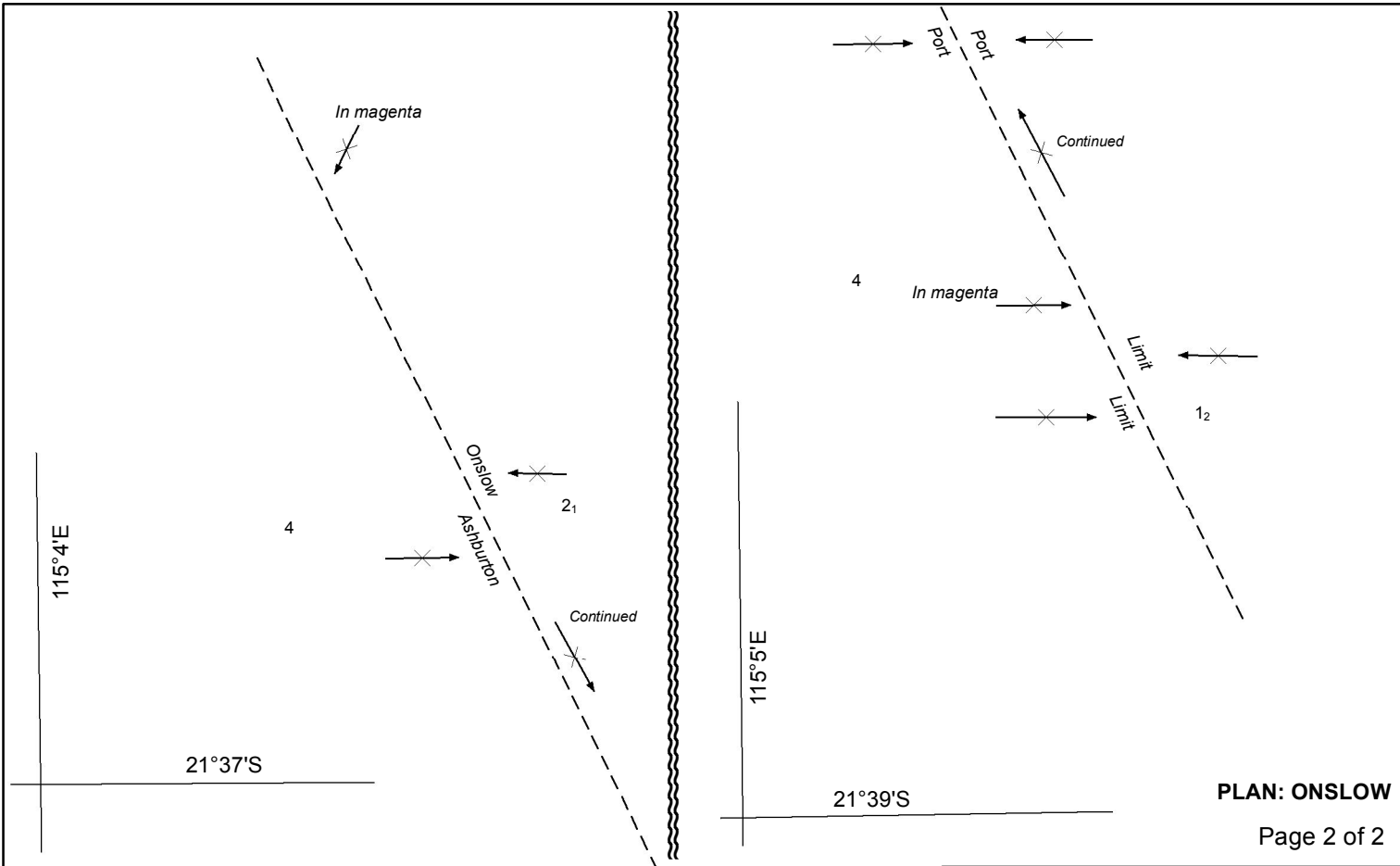


Australian Government
Department of Defence

AUS 57

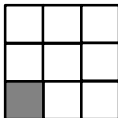
© Commonwealth of Australia 2012





Previous Notice 34/2012

NTM 101/2012



Australian Government
Department of Defence

AUS 64

© Commonwealth of Australia 2012

6₇

10

114°36'E

28°46'S

of

114°36.50'E

5₉

28°46'S

of

3₃

PLAN: PORT OF GERALDTON

Previous Notice 1250/2011

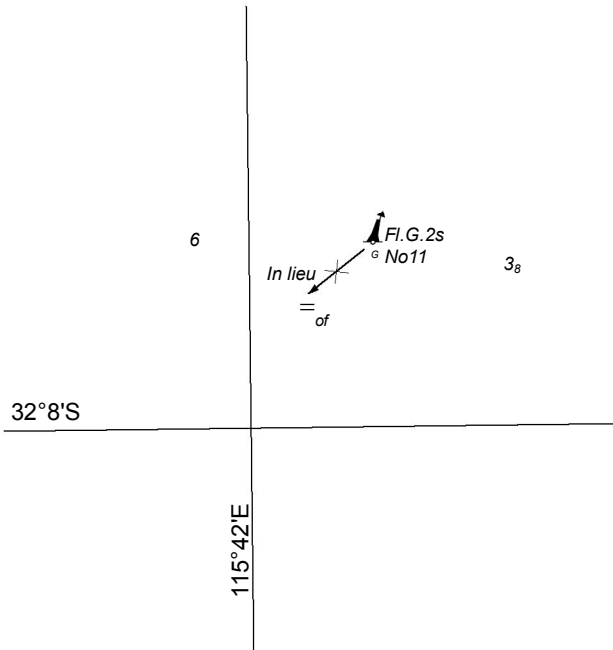
NTM 102/2012



Australian Government
Department of Defence

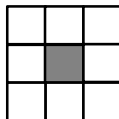
AUS 81

© Commonwealth of Australia 2012



Previous Notice 904/2011

NTM 103/2012

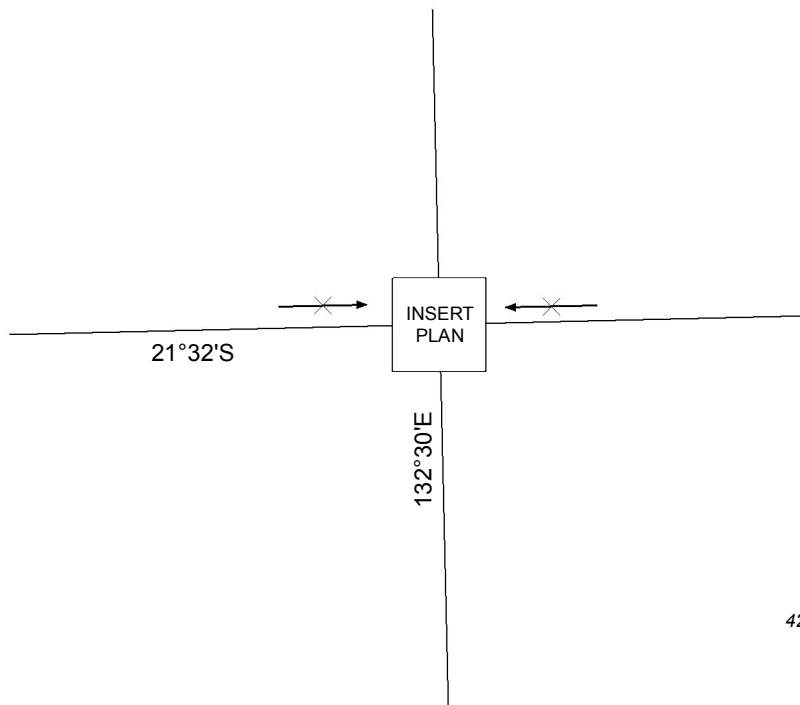


Australian Government
Department of Defence

AUS 117

© Commonwealth of Australia 2012

10₅

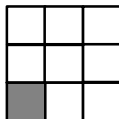


42

PLAN: PORT EYRE

Previous Notice NE 18/11/2011

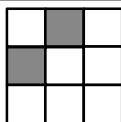
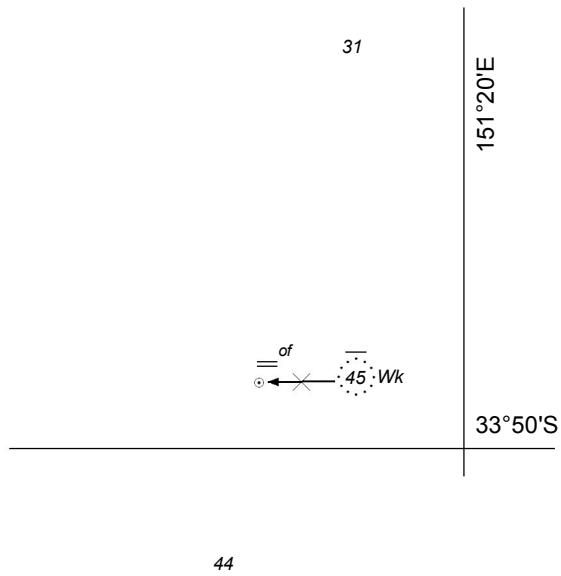
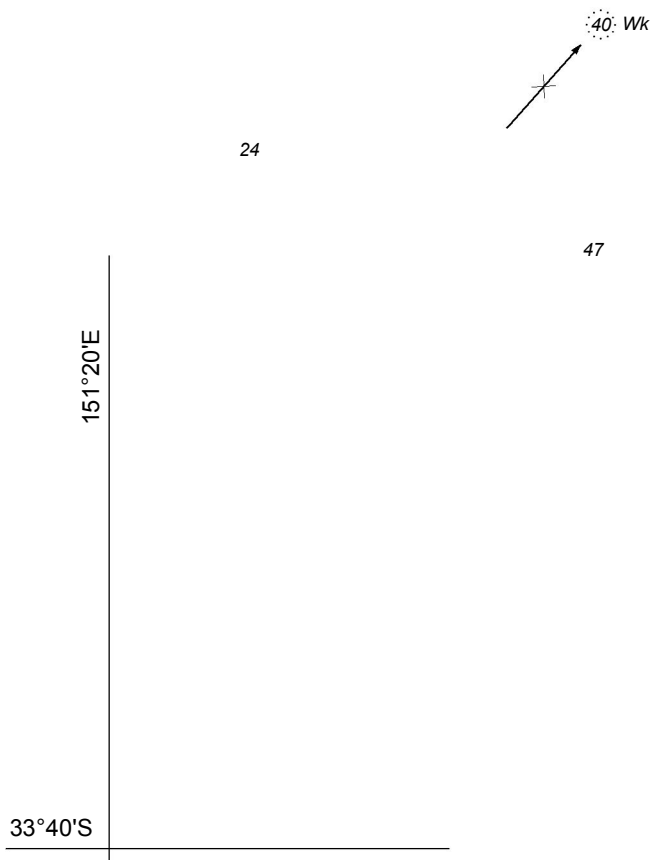
NTM 105/2012

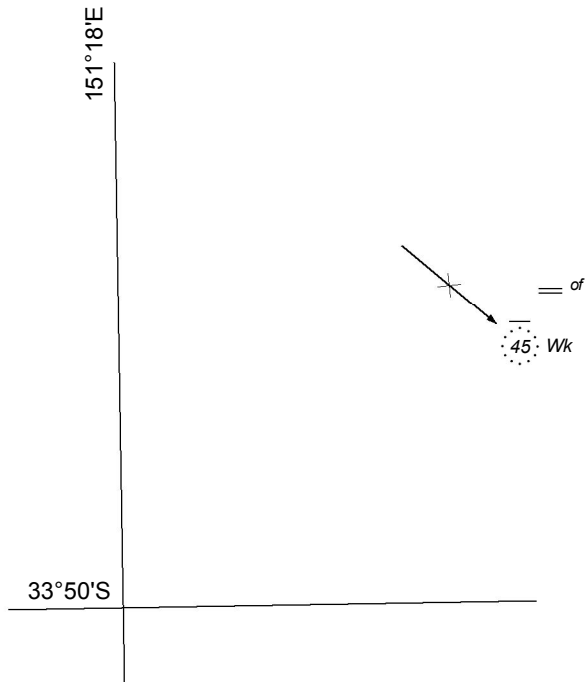


Australian Government
Department of Defence

AUS 121

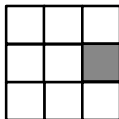
© Commonwealth of Australia 2012





Previous Notice 1297/2011

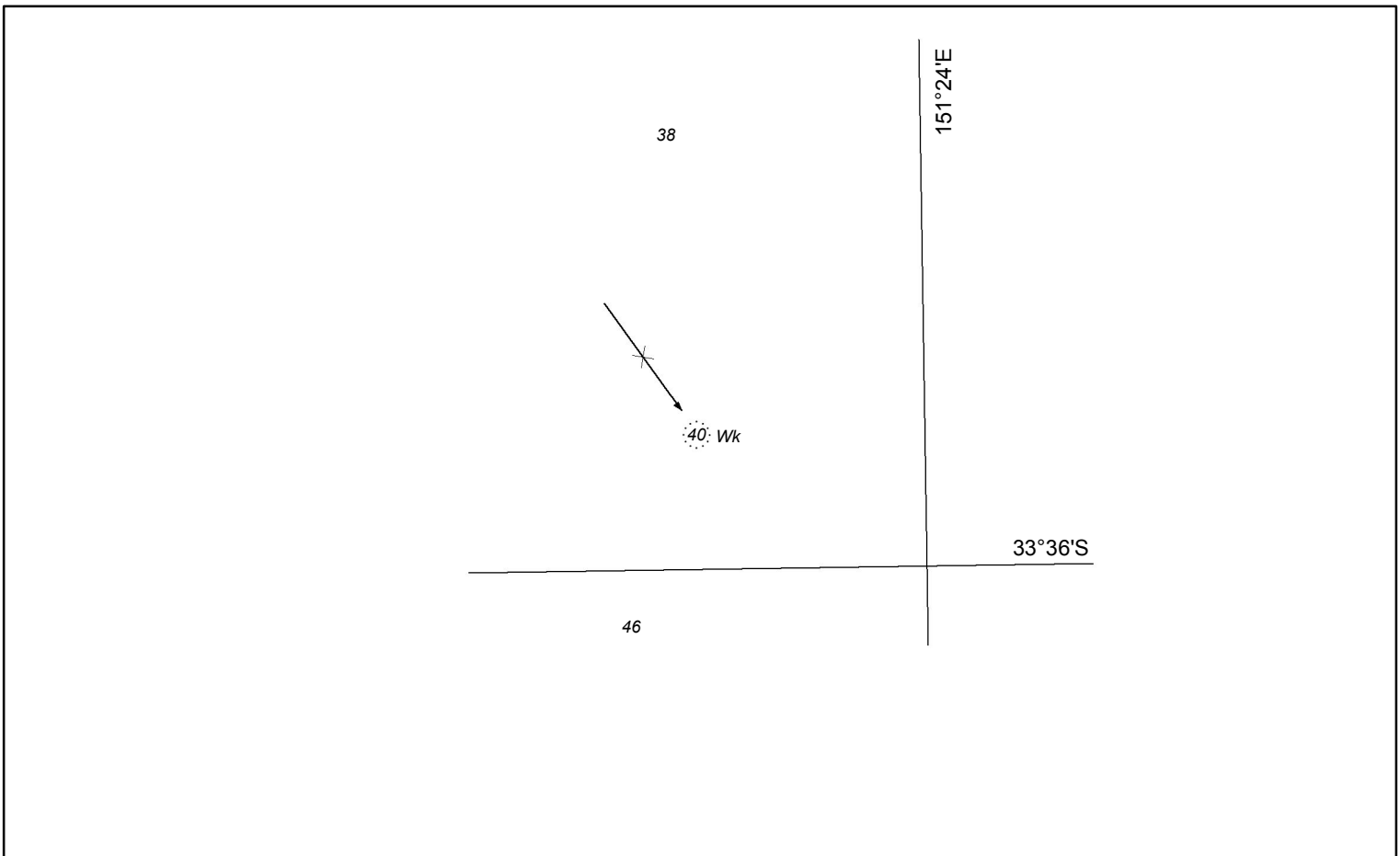
NTM 89/2012



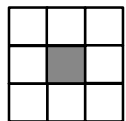
Australian Government
Department of Defence

AUS 200

© Commonwealth of Australia 2012



Previous Notice 1236/2011



AUS 204

NTM 90/2012

© Commonwealth of Australia 2012

6₉

4₅

Ldg Iso. Y.2s & Q.Y



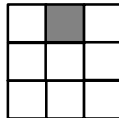
of

150° 50'E

23° 15'S

Previous Notice 632/2011

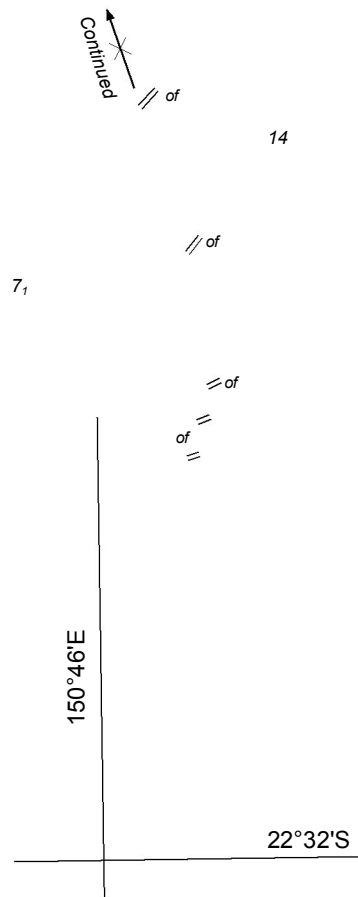
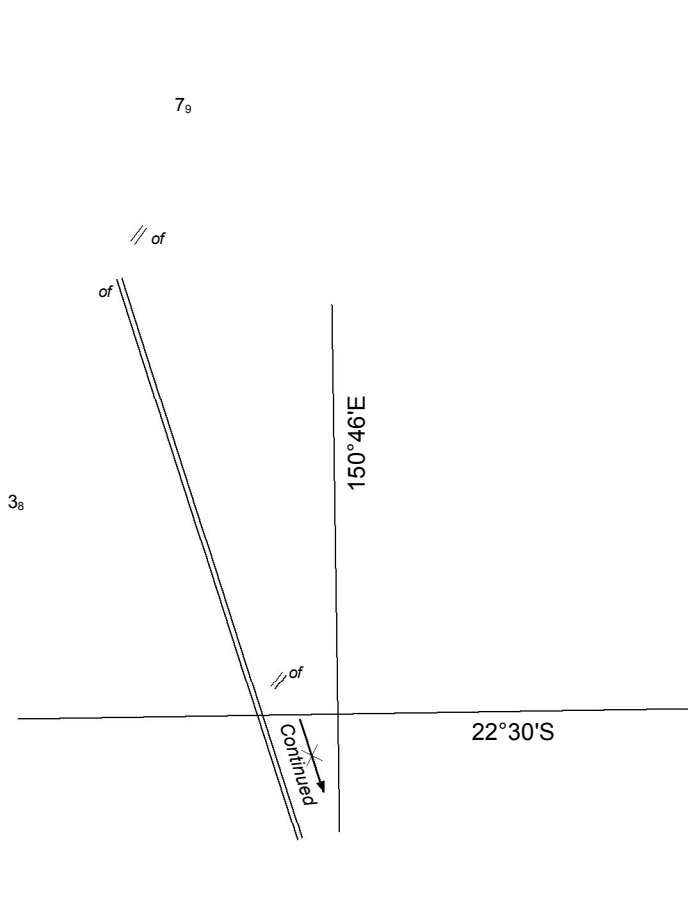
NTM 91/2012



Australian Government
Department of Defence

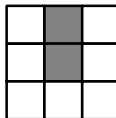
AUS 247

© Commonwealth of Australia 2012



Previous Notice 425/2007

NTM 92/2012



Australian Government
Department of Defence

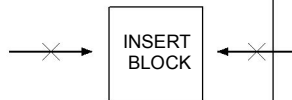
AUS 248

© Commonwealth of Australia 2012

28_s

148° 55'E

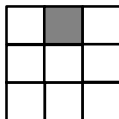
20° 05'S



36

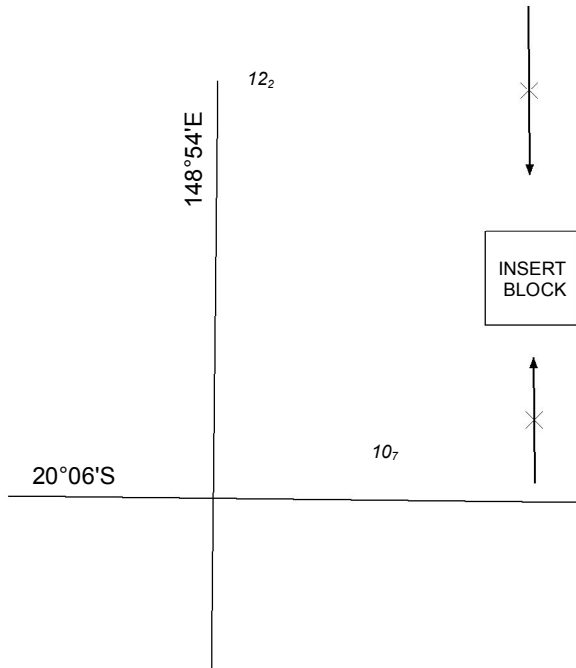
Previous Notice 789/2011

NTM 93/2012



AUS 252

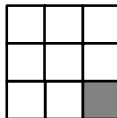
© Commonwealth of Australia 2012



PLAN: STONEHAVEN ANCHORAGE

Previous Notice 890/2011

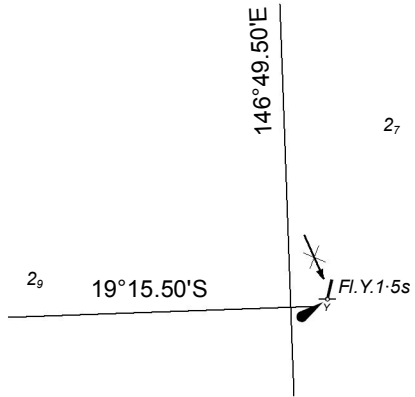
NTM 93/2012



Australian Government
Department of Defence

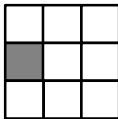
AUS 254

© Commonwealth of Australia 2012



Previous Notice 1239/2011

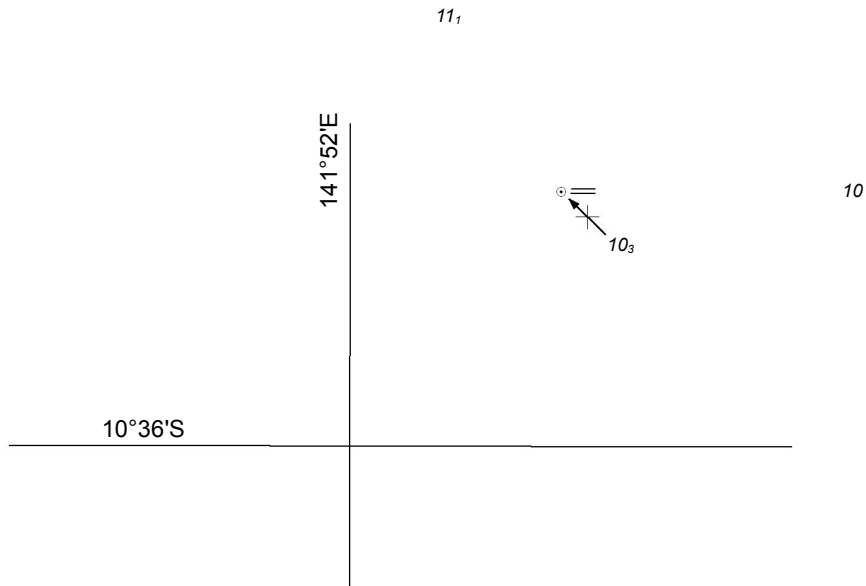
NTM 94/2012



Australian Government
Department of Defence

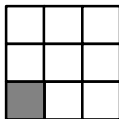
AUS 257

© Commonwealth of Australia 2012



Previous Notice NC 18/11/2011

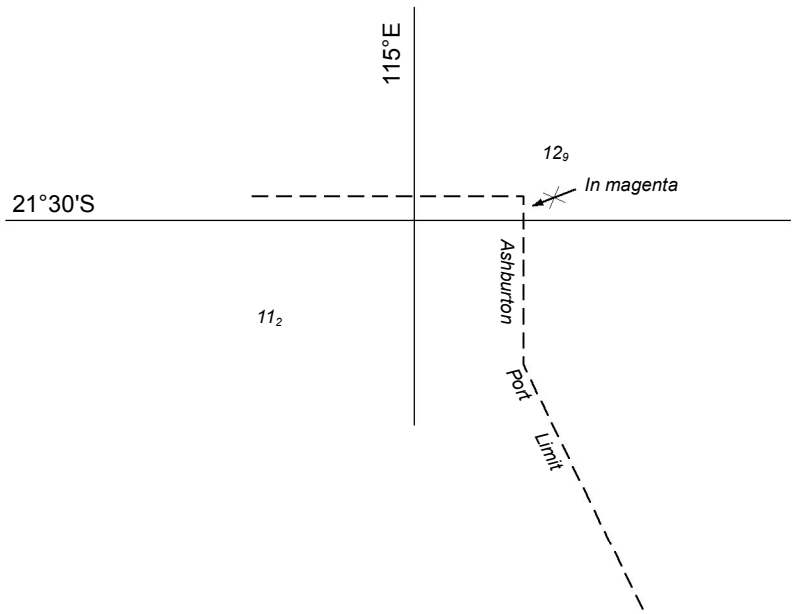
NTM 97/2012



Australian Government
Department of Defence

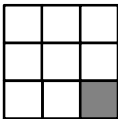
AUS 296

© Commonwealth of Australia 2012



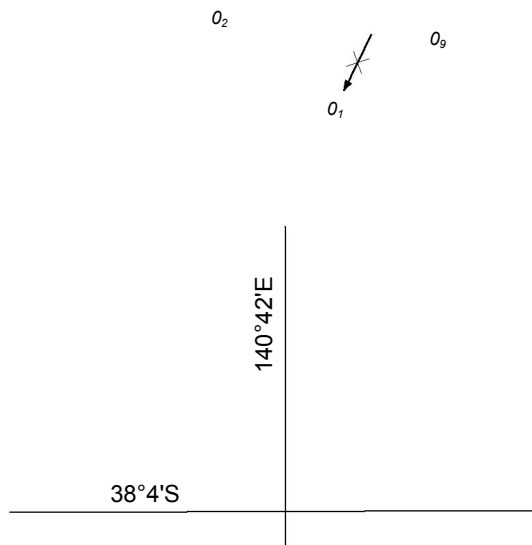
Previous Notice 1307/2011

NTM 101/2012



AUS 328

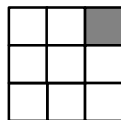
© Commonwealth of Australia 2012



PLAN: PORT MACDONNELL

Previous Notice 1075/2011

NTM 106/2012

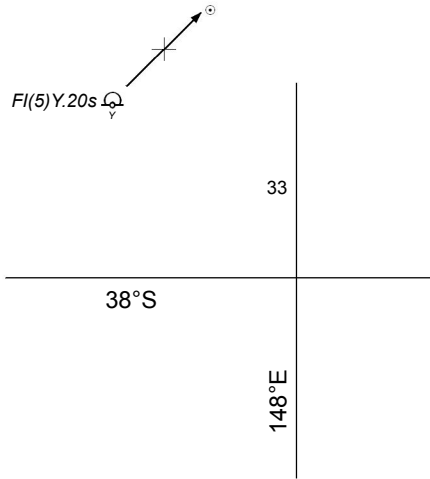


Australian Government
Department of Defence

AUS 348

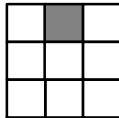
© Commonwealth of Australia 2012

27₂



Previous Notice 513/2011

NTM 109/2012



Australian Government
Department of Defence

AUS 357

© Commonwealth of Australia 2012

32



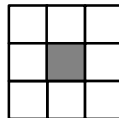
853

147°E

9°30'S

Previous Notice NC 17/11/2011

NTM 95/2012



Australian Government
Department of Defence

AUS 379

© Commonwealth of Australia 2012

34°S

151°E

← 40 Wk

110

135

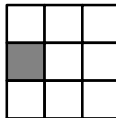
146

= of

103

Previous Notice 1236/2011

NTM 89 & 90/2012

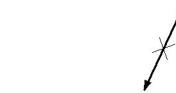


AUS 489

© Commonwealth of Australia 2012

261

Fl.8s 47m 18M



of

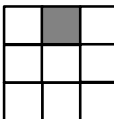
152°10'E

4°10'S

460

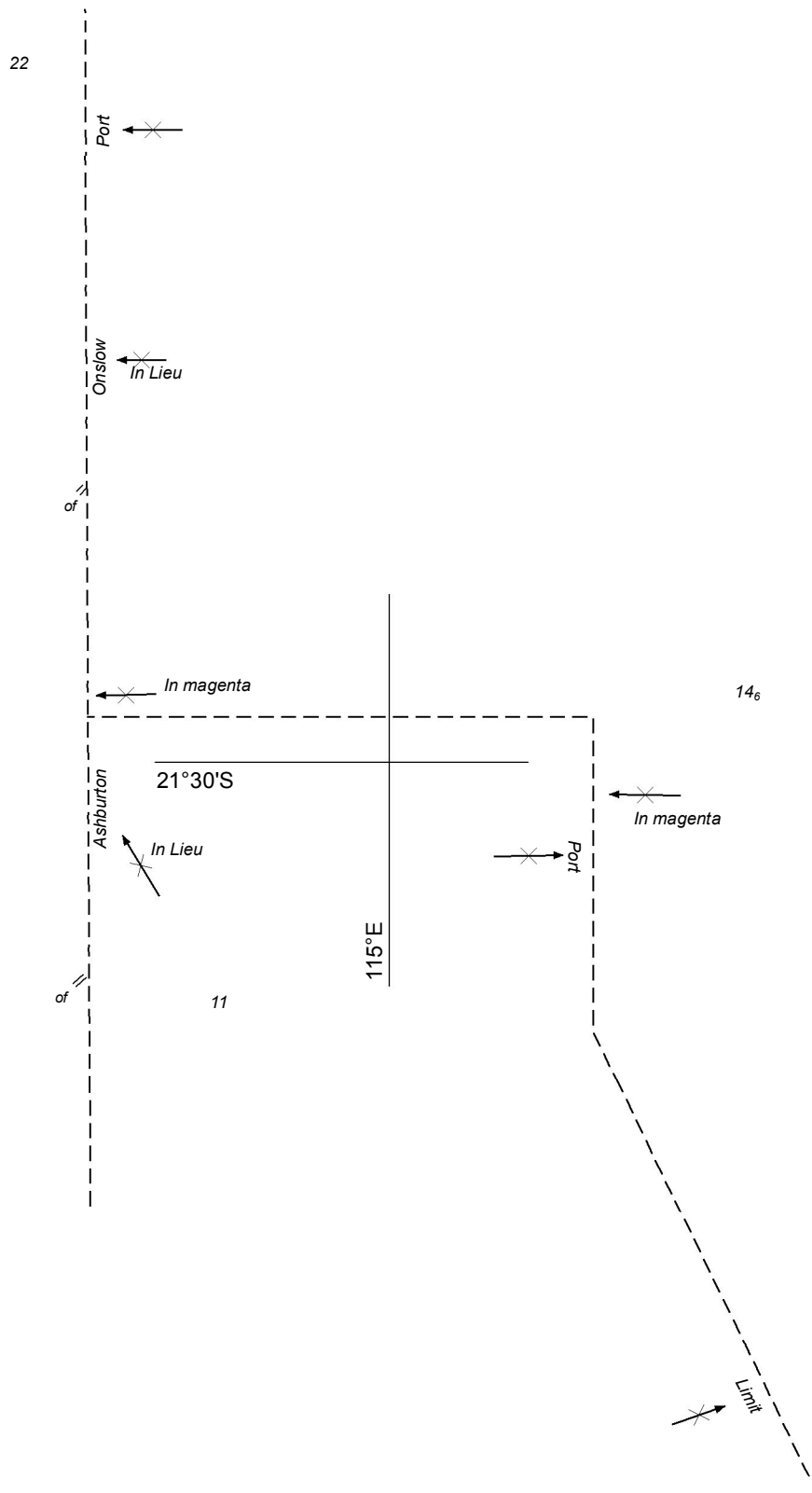
Previous Notice 414/2010

NTM 96/2012



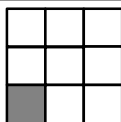
AUS 680

© Commonwealth of Australia 2012



Previous Notice 34/2012

NTM 101/2012



Australian Government
Department of Defence

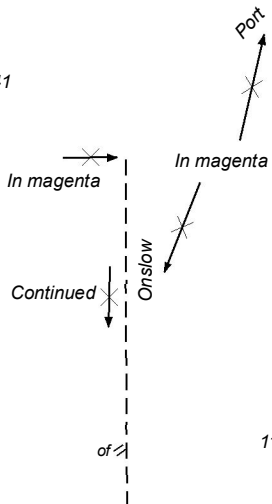
AUS 743

© Commonwealth of Australia 2012

21°15'S

114°59.38'E

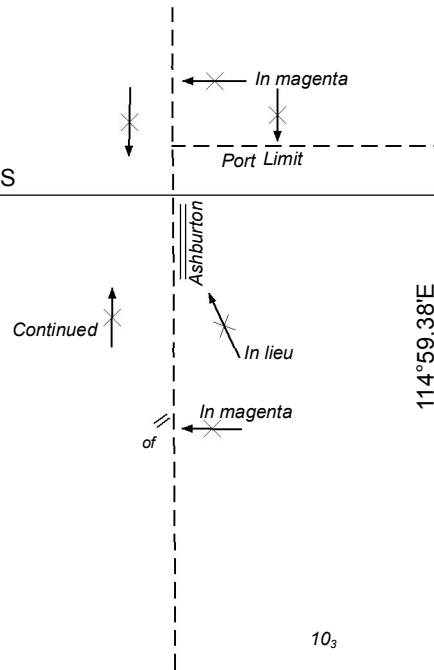
41



12₂

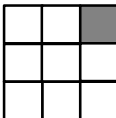
21°30'S

114°59.38'E



Previous Notice 1132/2011

NTM 101/2012



AUS 744

© Commonwealth of Australia 2012

13_s

Obstr 3₄

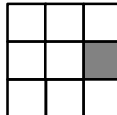
12

115°45'E

33°15'S

Previous Notice 35/2012

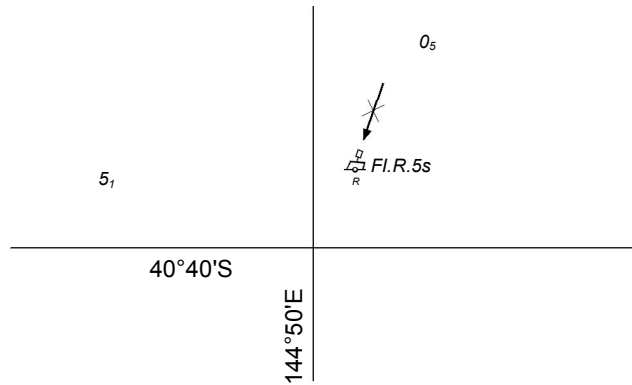
NTM 104/2012



Australian Government
Department of Defence

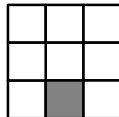
AUS 755

© Commonwealth of Australia 2012



Previous Notice 1014/2011

NTM 108/2012



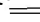
AUS 790

© Commonwealth of Australia 2012

43°S

148°E

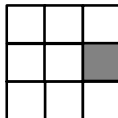
39

Fl. Bu. 5s → *of*
In lieu 

23_s

Previous Notice 1245/2010

NTM 107/2012



AUS 796

© Commonwealth of Australia 2012

40

148°E

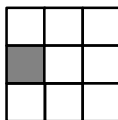
43°S

38

Fl. Bu. 5s ~~→~~ *of*
In lieu

Previous Notice 806/2011

NTM 107/2012



Australian Government
Department of Defence

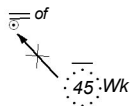
AUS 797

© Commonwealth of Australia 2012

33°47'S

151°15'E

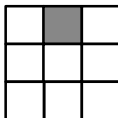
75



67

Previous Notice 1296/2011

NTM 89/2012



Australian Government
Department of Defence

AUS 808

© Commonwealth of Australia 2012

33°30'S

33°45'S

51

25

151°30'E

151°15'E

60

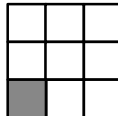
Wk 40

45 Wk

55

Previous Notice 1296/2011

NTM 89 & 90/2012



AUS 809

© Commonwealth of Australia 2012

150°45.05E

23°15'S

Ldg Iso. Y.2s & Q.Y

~~In lieu~~

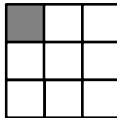
of

5₅

2₇

Previous Notice 1301/2011

NTM 91/2012



Australian Government
Department of Defence

AUS 819

© Commonwealth of Australia 2012

5₂

150°45'E

23°15'S

Ldg Iso. Y.2s & Q.Y



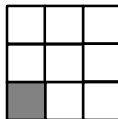
In lieu

of

8₈

Previous Notice 845/2011

NTM 91/2012



AUS 820

© Commonwealth of Australia 2012

20°S

149°E

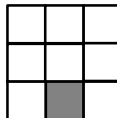
44



31

Previous Notice 632/2011

NTM 93/2012




 Australian Government
 Department of Defence

AUS 825

© Commonwealth of Australia 2012