



4 May 2012

Edition 9

Australian Notices to Mariners are the authority for correcting Australian Charts and Publications

---

# AUSTRALIAN NOTICES TO MARINERS

Notices 421 – 480 

Published fortnightly by the Australian Hydrographic Service

Commodore R. NAIRN RAN  
*Hydrographer of Australia*

---

## SECTIONS.

- I. **Australian Notices to Mariners, including blocks and notes.**
- II. **Hydrographic Reports.**
- III. **Navigational Warnings.**

## SUPPLEMENTS.

- I. **Tracings**
- II. **Cumulative List of Australian Notices to Mariners.**
- III. **Cumulative List of Temporary and Preliminary Australian Notices to Mariners.**
- IV. **Temporary and Preliminary Notices in force.**
- V. **Amendments to Admiralty List of Lights and Fog Signals (Vol K), Radio Signals (NP 281(2), 282, 283(2), 285, 286(4)) and Sailing Directions (NP 9, 13, 14, 15, 33, 34, 35, 36, 39, 44, 51, 60, 61, 62, 100, 136).**

---

© Commonwealth of Australia 2012

This work is copyright. Apart from any use permitted under the Copyright Act 1968, no part may be reproduced by any process, adapted, communicated or commercially exploited without prior written permission from The Commonwealth represented by the Australian Hydrographic Service.

## IMPORTANT NOTICE

This edition of Notices to Mariners includes all significant information affecting AHS products which the AHS has become aware of since the last edition. All reasonable efforts have been made to ensure the accuracy and completeness of the information, including third party information, on which these updates are based. The AHS regards third parties from which it receives information as reliable, however the AHS cannot verify all such information and errors may therefore exist. The AHS does not accept liability for errors in third party information.

---

## GENERAL INSTRUCTIONS

The substance of these notices should be inserted on the charts affected.

Bearings are referred to the true compass and are reckoned clockwise from North; those relating to lights are given as seen by an observer from seaward. Positions quoted in permanent notices relate to the horizontal datum for the chart(s). When preliminary or temporary notices affect multiple charts, positions will be provided in relation to only one horizontal datum and that datum will be specified. When the multiple charts do not have a common horizontal datum, mariners will be required to adjust the position(s) for those charts not on the specified datum. The range quoted for a light is its nominal range. Depths are with reference to the chart datum of each chart. Heights are above mean high water springs or mean higher high water, as appropriate.

The capital letter (P) or (T) after the number of any notice denotes a preliminary or temporary notice respectively, which are contained separately at the end of the permanent notices. A star (\*) adjacent to the number of a notice indicates that the notice is based on original information.

---

## REPORTING OF DANGERS

Mariners are particularly requested to notify the AUSTRALIAN HYDROGRAPHIC SERVICE, Locked Bag 8801 Wollongong, NSW 2500 (Fax 02-4223 6599, e-mail [Hydro.NTM@defence.gov.au](mailto:Hydro.NTM@defence.gov.au) or, alternatively by filling in and submitting the [Hydrographic Notes](#) forms located on the web site – [www.hydro.gov.au](http://www.hydro.gov.au)), immediately on the discovery of new dangers or suspected dangers to navigation. For changes or defects in aids to navigation notify AusSAR (Fax 02-6230 6868 or email [rccaus@amsa.gov.au](mailto:rccaus@amsa.gov.au)).

---

## AUTHORISED USE

Copies of Australian notices are available free of charge from the Australian Hydrographic Service (AHS) website ([www.hydro.gov.au](http://www.hydro.gov.au)) and through the eNotices (email) service ([www.hydro.gov.au/enotices/enotices.htm](http://www.hydro.gov.au/enotices/enotices.htm)).

Individual Notices may be copied for the purpose of inserting Notice substance on official charts and publications. Paper copies may be printed by chart agents and distributed to customers on a cost recovery basis. Participating chart agents are listed on the AHS website as providing a 'Paper Notices to Mariners' service ([www.hydro.gov.au/prodserv/distributors/distributors.htm](http://www.hydro.gov.au/prodserv/distributors/distributors.htm)). Copies of the notices may not be sold for profit without prior written agreement.

## NUMERICAL INDEX OF NOTICES TO MARINERS

### Edition No 9

Notices	Aus Chart, INT Chart, AHP, BA Pubs
421.....	Aus 83, 208, NP 36
422.....	Amendment to Australian National Tide Tables 2012
423.....	Aus 193, 807, 808, AX 60193, 70193, 00808S
424.....	Aus 222
425.....	Aus 238
426.....	Aus 830, AX 6027S
427.....	Aus 379, 505, 621, 622
428.....	Aus 621, 622
429.....	Aus 684
430.....	Aus 645
431.....	Aus 314, 4603, 4721, 4722, INT 603, 721, 722, AX 00314U, 04603U, 04721U, 04722U
432.....	Aus 312, 313, 901, 4721, 4722, INT 721, 722, AX 00312U, 00313U, 04721U, 04722U
433.....	Aus 321, AX 00321U
434.....	Aus 4603, INT 603, AX 04603U
435.....	Aus 317, AX 00317U
436.....	Aus 4722, INT 722, AX 04722U
437.....	Aus 4723, INT 723, AX 04723U
438.....	Aus 400, 608
439.....	Aus 607
440.....	Aus 327
441.....	Aus 328, 743, 744
442.....	Aus 117, AX 70117
443.....	Aus 114, 117, AX 70117
444.....	Aus 118, 759, AX 00118S
445.....	Aus 341, 4727, INT 727
446.....	Aus 122
447.....	Aus 121
448.....	Aus 776, AX 00776S
449.....	Aus 129
450.....	Aus 143
451.....	Aus 801
452.....	Aus 4060, 4604, INT 60, 604, AX 04604U
453(T).....	Aus 207, 208
454(T).....	Aus 235, 236, 237, 238, 814, 815
455(T).....	Aus 235
456(T).....	Aus 247, 265
457(T).....	Aus 260, 261, 367, 822, AX 60260, 67261, 00260S, 00367S, 00822S
458(T).....	Aus 249, 823, AX 00249S, 00823S
459(T).....	Aus 251, 824
460(T).....	Aus 252, 254
461(T).....	Aus 256, 257
462(T).....	Aus 258, 829
463(T).....	Aus 270
464(T).....	Aus 24, 26, 27, 722, AX 72722
465(T).....	Aus 325, 4722, INT 722, AX 04722U
466(T).....	Aus 325, 326
467(T).....	Aus 59
468(T).....	Aus 328, 4723, INT 723, AX 04723U
469(T).....	Aus 328, 4723, INT 723, AX 04723U
470(T).....	Aus 328, 4723, INT 723, AX 04723U
471(T).....	Aus 4723, INT 723, AX 04723U
472(T).....	Aus 743
473(T).....	Aus 63, 64, 743, 744
474(T).....	Aus 115
475(T).....	Aus 116
476(T).....	Aus 173
477(T).....	Aus 167
478(T).....	Aus 143
479(T).....	Aus 181
480(T).....	Aus 4621, INT 621, AX 04621U



**421 AUSTRALIA - Product**

UKHO (AA596466)

**New Chart to be published shortly**

<i>Chart</i>	<i>Title</i>	<i>Scale</i>	<i>Expected Publication Date</i>	<i>Remarks</i>
Aus 83	Australia - West Coast -Western Australia - Plans in Western Australia (Sheet 5) Plans: Recruit Bay Easter Island Group	1:25 000 1:25 000	18 May 2012	

**New Edition to be published shortly**

<i>Chart</i>	<i>Title</i>	<i>Scale</i>	<i>Expected Publication Date</i>	<i>Remarks</i>
Aus 208	Australia - East Coast - New South Wales – Newcastle Plan: Hunter River (South Arm)	1:10 000 1:7 500	18 May 2012	

**Admiralty publication**

<i>NP No</i>	<i>Title</i>	<i>Date</i>	<i>Remarks</i>
NP 36	Indonesia Pilot Volume 1 (Seventh Edition) 2012.	10/5/2012	The 2009 edition is thereby cancelled.

For further details refer to the AHS website at [www.hydro.gov.au](http://www.hydro.gov.au) for new edition and new chart stock arrival information.

When placing orders with a chart agent, mariners should advise whether their order pertains to the current edition or the new edition.

**422 AUSTRALIA - Product - Amendment to Australian National Tide Tables 2012**

Australian Hydrographic Service (AA595703)

Page 394

*Amend* St Francis Island To Chart Datum to 0.0

Page xxxvii

*Amend* Thevenard To Chart Datum AUS 120 NE 23 MAR 2012 0.0**423\* AUSTRALIA - NEW SOUTH WALES - Huskisson to Crookhaven Bight - Nav aids**

Marine Parks Authority NSW (AA587307)

**Aus 193 [238/2011]**

Insert	special spar light buoy, <i>Fl. Y.5s</i> , without topmark	34° 59'.300 S	150° 47'.483 E
	special spar light buoy, <i>Fl. Y.5s</i> , without topmark	34° 59'.300 S	150° 48'.050 E
	special spar light buoy, <i>Fl. Y.5s</i> , without topmark	34° 59'.983 S	150° 48'.050 E
	special spar light buoy, <i>Fl. Y.5s</i> , without topmark	35° 04'.983 S	150° 47'.750 E
	special spar light buoy, <i>Fl. Y.5s</i> , without topmark	35° 04'.783 S	150° 47'.483 E
	special cylindrical light buoy, <i>Fl. Y.5s</i> , without topmark	35° 03'.567 S	150° 46'.350 E
	special cylindrical light buoy, <i>Fl. Y.5s</i> , without topmark	35° 04'.720 S	150° 46'.250 E
Substitute	special cylindrical light buoy, <i>Fl. Y.5s</i> , without topmark for light buoy	35° 02'.73 S	150° 40'.72 E
Delete	topmark	35° 01'.70 S	150° 45'.83 E
	topmark	35° 01'.70 S	150° 44'.97 E
	topmark	35° 00'.82 S	150° 44'.97 E
	topmark	35° 00'.14 S	150° 44'.97 E
	topmark	35° 01'.76 S	150° 40'.86 E
	topmark	35° 01'.75 S	150° 41'.54 E
	topmark	35° 02'.45 S	150° 41'.55 E

**423\* AUSTRALIA - NEW SOUTH WALES - Huskisson to Crookhaven Bight – Nav aids (continued)**
**Aus 193 (plan, Huskisson)**

Delete topmark 35° 01'.76 S 150° 40'.87 E

**Aus 807 [728/2011]**

Insert special spar light buoy, *Fl. Y.5s*, without topmark 34° 58'.57 S 150° 47'.15 E  
 special spar light buoy, *Fl. Y.5s*, without topmark 34° 59'.30 S 150° 47'.48 E  
 special spar light buoy, *Fl. Y.5s*, without topmark 34° 59'.30 S 150° 48'.05 E  
 special spar light buoy, *Fl. Y.5s*, without topmark 34° 59'.98 S 150° 48'.05 E

**Aus 808 [89/2012]**

Insert special spar light buoy, *Fl. Y.5s*, without topmark 34° 58'.57 S 150° 47'.15 E  
 special spar light buoy, *Fl. Y.5s*, without topmark 34° 59'.30 S 150° 47'.48 E  
 special spar light buoy, *Fl. Y.5s*, without topmark 34° 59'.30 S 150° 48'.05 E  
 special spar light buoy, *Fl. Y.5s*, without topmark 34° 59'.98 S 150° 48'.05 E

**AX 60193 [238/2011]**

Insert special spar light buoy, *Fl. Y.5s*, without topmark 34° 59'.300 S 150° 47'.483 E  
 special spar light buoy, *Fl. Y.5s*, without topmark 34° 59'.300 S 150° 48'.050 E  
 special spar light buoy, *Fl. Y.5s*, without topmark 34° 59'.983 S 150° 48'.050 E  
 special spar light buoy, *Fl. Y.5s*, without topmark 35° 04'.983 S 150° 47'.750 E  
 special spar light buoy, *Fl. Y.5s*, without topmark 35° 04'.783 S 150° 47'.483 E  
 special cylindrical light buoy, *Fl. Y.5s*, without topmark 35° 03'.567 S 150° 46'.350 E  
 special cylindrical light buoy, *Fl. Y.5s*, without topmark 35° 04'.720 S 150° 46'.250 E

Substitute special cylindrical light buoy, *Fl. Y.5s*, without topmark for light buoy 35° 02'.73 S 150° 40'.72 E

Delete topmark 35° 01'.70 S 150° 45'.83 E  
 topmark 35° 01'.70 S 150° 44'.97 E  
 topmark 35° 00'.82 S 150° 44'.97 E  
 topmark 35° 00'.14 S 150° 44'.97 E  
 topmark 35° 01'.76 S 150° 40'.86 E  
 topmark 35° 01'.75 S 150° 41'.54 E  
 topmark 35° 02'.45 S 150° 41'.55 E

**AX 70193 [238/2011]**

Insert special spar light buoy, *Fl. Y.5s*, without topmark 34° 59'.300 S 150° 47'.483 E  
 special spar light buoy, *Fl. Y.5s*, without topmark 34° 59'.300 S 150° 48'.050 E  
 special spar light buoy, *Fl. Y.5s*, without topmark 34° 59'.983 S 150° 48'.050 E  
 special spar light buoy, *Fl. Y.5s*, without topmark 35° 04'.983 S 150° 47'.750 E  
 special spar light buoy, *Fl. Y.5s*, without topmark 35° 04'.783 S 150° 47'.483 E  
 special cylindrical light buoy, *Fl. Y.5s*, without topmark 35° 03'.567 S 150° 46'.350 E  
 special cylindrical light buoy, *Fl. Y.5s*, without topmark 35° 04'.720 S 150° 46'.250 E

Substitute special cylindrical light buoy, *Fl. Y.5s*, without topmark for light buoy 35° 02'.73 S 150° 40'.72 E

Delete topmark 35° 01'.70 S 150° 45'.83 E  
 topmark 35° 01'.70 S 150° 44'.98 E  
 topmark 35° 00'.82 S 150° 44'.97 E  
 topmark 35° 00'.14 S 150° 44'.97 E  
 topmark 35° 01'.76 S 150° 40'.86 E  
 topmark 35° 01'.75 S 150° 41'.54 E  
 topmark 35° 02'.45 S 150° 41'.55 E

**AX 00808S [NE 9/2/2012]**

Insert special spar light buoy, *Fl. Y.5s*, without topmark 34° 58'.57 S 150° 47'.15 E  
 special spar light buoy, *Fl. Y.5s*, without topmark 34° 59'.30 S 150° 47'.48 E  
 special spar light buoy, *Fl. Y.5s*, without topmark 34° 59'.30 S 150° 48'.05 E  
 special spar light buoy, *Fl. Y.5s*, without topmark 34° 59'.98 S 150° 48'.05 E

**424\* AUSTRALIA - NEW SOUTH WALES - Clarence River - Lights**

Yamba Harbour Master (AA595034)

**Aus 222 [374/2012]**

Amend	light to 2Fl.G.2-5s	29° 25'.79 S	153° 14'.46 E
	light to 2Fl.R.2-5s	29° 25'.85 S	153° 14'.46 E

**425\* AUSTRALIA - QUEENSLAND - Brisbane River - Quarries Reach - Lights**

Former Notice - 1090(T)/2006 is cancelled

Maritime Safety Queensland Notice 334/2012 (AA593500)

**Aus 238 [222/2012]**

Amend	light to F.Bu (F.Y Day) No10R	27° 26'.48 S	153° 07'.15 E
	light to F.Bu (F.Y Day) No10F	27° 26'.59 S	153° 06'.64 E
	light to F.R (F.Y Day)	27° 26'.60 S	153° 06'.69 E
	light to F.R (F.Y Day)	27° 26'.62 S	153° 06'.60 E

**426\* AUSTRALIA - QUEENSLAND - Double Island - Light buoy**

Maritime Safety Queensland Notice 392/2012 (AA595127)

**Aus 830 [384/2012]**

Move	light buoy	16° 44'.1 S	145° 42'.6 E
	to	16° 44'.01 S	145° 42'.59 E

**AX 6027S [384/2012]**

Move	light buoy	16° 44'.1 S	145° 42'.6 E
	to	16° 44'.01 S	145° 42'.59 E

**427\* PAPUA NEW GUINEA - Port Moresby - Depths; port limit**HMAS *Leeuwin* (DHDB 1873810), National Maritime Safety Authority PNG (DHDB 2090035)**Aus 379 [95/2012]**

Insert	accompanying block	9° 30'.0 S	146° 56'.0 E
	magenta dashed line, between	9° 33'.70 S	147° 18'.82 E
		9° 34'.15 S	147° 17'.14 E
		9° 34'.88 S	147° 16'.00 E
	magenta dashed line between	9° 33'.71 S	147° 13'.07 E
		9° 22'.39 S	146° 52'.95 E
		9° 16'.10 S	146° 53'.93 E
	magenta dashed line between	9° 33'.40 S	147° 08'.10 E
		9° 32'.34 S	147° 06'.35 E

Delete	magenta dashed line and legend, D, centred on	8° 27'.8 S	147° 13'.0 E
--------	---	------------	--------------

**Aus 505 [501/2011]**

Insert	accompanying block	9° 30'.0 S	146° 56'.0 E
Substitute	accompanying ZOC diagram	9° 45'.0 S	147° 48'.0 E
Delete	magenta dashed line, with legend Port Limit, between	9° 31'.6 S	147° 07'.8 E
		9° 29'.9 S	147° 07'.1 E
	magenta dashed line between	9° 29'.5 S	147° 07'.1 E
		9° 29'.3 S	147° 07'.1 E
	magenta dashed line between	9° 28'.4 S	147° 07'.1 E
		9° 28'.4 S	147° 06'.9 E

**427\* PAPUA NEW GUINEA - Port Moresby - Depths; port limit (continued)****Aus 621 [190/2009]**

Insert	accompanying block A	9° 32'.0 S	147° 00'.0 E
	accompanying block B	9° 32'.0 S	147° 04'.0 E
	magenta dashed line, with legend <i>Port Limit</i> , between	9° 28'.63 S	146° 59'.57 E
		9° 27'.75 S	146° 58'.80 E
Substitute	accompanying ZOC diagram	9° 26'.0 S	147° 15'.0 E
Delete	magenta dashed line with legend, Port Limit, between	9° 31'.61 S	147° 07'.81 E
		9° 29'.86 S	147° 07'.08 E
	magenta dashed line between	9° 29'.51 S	147° 07'.16 E
		9° 29'.31 S	147° 07'.11 E

**Aus 622 [740/2011]**

Delete	magenta dashed line with legend, Port Limit, between	9° 30'.00 S	147° 07'.14 E
		9° 29'.86 S	147° 07'.08 E
	magenta dashed line with legend, Port Limit, between	9° 29'.51 S	147° 07'.16 E
		9° 29'.31 S	147° 07'.11 E
	legend Port Limit centred on	9° 28'.40 S	147° 06'.97 E

**Aus 622 (plan, Port Moresby and Napa Napa Wharves)**

Delete	magenta legend Port Limit centred on	9° 28'.40 S	147° 06'.97 E
--------	--------------------------------------	-------------	---------------

**428\* PAPUA NEW GUINEA - Port Moresby - Esade Motu Motu - Light beacon**

National Maritime Safety Authority PNG (AA595029, AA595030)

**Aus 621 [427/2012]**

Insert	south cardinal light beacon, Q(6)+LFl. 15s, with topmark	9° 27'.170 S	147° 07'.149 E
Delete	depth, 2 <sub>3</sub> m	9° 27'.22 S	147° 07'.15 E

**Aus 622 [427/2012]**

Substitute	south cardinal light beacon, Q(6)+LFl. 15s, with topmark for beacon	9° 27'.17 S	147° 07'.15 E
------------	---	-------------	---------------

**429\* PAPUA NEW GUINEA - Buka Passage - Port limit; aeronautical beacon**

National Maritime Safety Authority PNG (DHDB 2090035)

**Aus684 (plan, Buka Passage) [39/2008]**

Insert	magenta dashed line, between	5° 23'.70 S	154° 40'.90 E	
		5° 23'.70 S	154° 42'.60 E	
		5° 24'.47 S	154° 42'.60 E	
	magenta dashed line, between	5° 26'.62 S	154° 39'.40 E	
		5° 27'.30 S	154° 39'.40 E	
		5° 27'.30 S	154° 40'.80 E	
Delete	magenta dashed line, between	5° 23'.69 S	154° 40'.93 E	
		5° 23'.68 S	154° 42'.57 E	
		5° 24'.46 S	154° 42'.57 E	
	magenta dashed line, between	5° 26'.61 S	154° 39'.44 E	
		5° 27'.31 S	154° 39'.44 E	
			5° 27'.31 S	154° 40'.83 E
	aero beacon		5° 26'.83 S	154° 40'.07 E

**430\* PAPUA NEW GUINEA - Basamuk - Port limit**  
National Maritime Safety Authority PNG (DHDB 2090035)

**Aus 645 [478/2010]**

Insert magenta dashed line, with legend *Port Limit*,  
between

5° 32'.252 S 146° 08'.247 E  
5° 32'.017 S 146° 09'.040 E

**Aus 645 (plan, Port of Basamuk)**

Insert magenta dashed line, with legend *Port Limit*,  
between

5° 32'.252 S 146° 08'.247 E  
5° 32'.017 S 146° 09'.040 E

**431\* AUSTRALIA - TIMOR SEA - Sahul Banks - Superbuoy**  
PTTEP Australasia (Ashmore Cartier) Pty Ltd (AA599082)

**Aus 314 [1008/2011]**

Delete lit superbuoy

12° 07'.1 S 125° 00'.8 E

**Aus 4603 (INT 603) [1243/2011]**

Delete lit superbuoy

12° 07'.1 S 125° 00'.8 E

**Aus 4721 (INT 721) [230/2012]**

Delete lit superbuoy

12° 07'.1 S 125° 00'.8 E

**Aus 4722 (INT 722) [231/2012]**

Delete lit superbuoy

12° 07'.1 S 125° 00'.8 E

**AX 00314U [NE 20/4/2012]**

Delete lit superbuoy

12° 07'.1 S 125° 00'.8 E

**AX 04603U [NE 20/4/2012]**

Delete lit superbuoy

12° 07'.1 S 125° 00'.8 E

**AX 04721U [NE 20/4/2012]**

Delete lit superbuoy

12° 07'.1 S 125° 00'.8 E

**AX 04722U [NE 20/4/2012]**

Delete lit superbuoy

12° 07'.1 S 125° 00'.8 E

**432\* EAST TIMOR - Point Laguebada - Light**  
United Nations Police (AA595128)

<b>Aus 312</b> [1126/2011]			
Amend	light range to 12M	8° 32'.9 S	125° 34'.1 E
<b>Aus 313</b> [1067/2011]			
Amend	light range to 12M	8° 32'.9 S	125° 34'.1 E
<b>Aus 901</b> [703/2006]			
Amend	light range to 12M	8° 32'.90 S	125° 34'.13 E
<b>Aus 4721 (INT 721)</b> [431/2012]			
Amend	light range to 12M	8° 32'.9 S	125° 34'.1 E
<b>Aus 4722 (INT 722)</b> [431/2012]			
Amend	light range to 12M	8° 32'.9 S	125° 34'.1 E
<b>AX 00312U</b> [NE 20/4/2012]			
Amend	light range to 12M	8° 32'.9 S	125° 34'.1 E
<b>AX 00313U</b> [NE 20/4/2012]			
Amend	light range to 12M	8° 32'.9 S	125° 34'.1 E
<b>AX 04721U</b> [431/2012]			
Amend	light range to 12M	8° 32'.9 S	125° 34'.1 E
<b>AX 04722U</b> [431/2012]			
Amend	light range to 12M	8° 32'.9 S	125° 34'.1 E

**433\* INDONESIA - Teluk Kupang - Pulau Kera - Light**  
Australian Hydrographic Service (AA373262)

<b>Aus 321</b> [230/2012]			
Insert	light, Iso.2s 13m 11M	10° 05'.33 S	123° 33'.30 E
Delete	light	10° 05'.3 S	123° 33'.1 E
<b>AX 00321U</b> [NE 20/4/2012]			
Insert	light, Iso.2s 13m 11M	10° 05'.33 S	123° 33'.30 E
Delete	light	10° 05'.3 S	123° 33'.1 E

**434 INDONESIA - Bangkulu - Light**  
BA Notice 15/1609/2012 (AA591830)

<b>Aus 4603 (INT 603)</b> [431/2012]			
Insert	light	2° 09'.7 S	122° 56'.0 E
<b>AX 04603U</b> [431/2012]			
Insert	light	2° 09'.7 S	122° 56'.0 E

**435\* INDONESIA - Pulau Dana - Depth northwestwards**  
Australian Hydrographic Service (AA595617, AA595618)

<b>Aus 317</b> [1008/2011]			
Insert	accompanying block	10° 27'.0 S	120° 27'.5 E
<b>AX 00317U</b> [NE 20/4/2012]			
Insert	accompanying block	10° 27'.0 S	120° 27'.5 E

4 May 2012

**436 INDONESIA - Pulau Pulau Tengah - Depth**

BA Notice 15/1675/2012 (AA591831)

**Aus 4722 (INT 722) [432/2012]**

Insert	depth, 22m, enclosed by contour	7° 38'.1 S	118° 14'.0 E
Delete	depth, 981m	7° 36'.0 S	118° 14'.0 E

**AX 04722U [432/2012]**

Insert	depth, 22m, enclosed by contour	7° 38'.1 S	118° 14'.0 E
Delete	depth, 981m	7° 36'.0 S	118° 14'.0 E

**437 INDONESIA - Java - Teluk Sadeng - Light; depth**

BA Notice 14/1555/2012 (AA590886)

**Aus 4723 (INT 723) [233/2012]**

Insert	light, <i>Fl.12M</i>	8° 09'.1 S	110° 36'.8 E
	depth, 390m, enclosed by contour	8° 41'.8 S	110° 37'.0 E

**AX 04723U [NE 20/4/2012]**

Insert	light, <i>Fl.12M</i>	8° 09'.1 S	110° 36'.8 E
	depth, 390m, enclosed by contour	8° 41'.8 S	110° 37'.0 E

**438\* INDIAN OCEAN - Christmas Island - Depths; ZOC diagram**HMAS *Melville* (DHDB 1898120)**Aus 400 [1128/2011]**

Insert	accompanying block	10° 29'.0 S	105° 37'.0 E
--------	--------------------	-------------	--------------

**Aus 608 [1128/2011]**

Insert	accompanying block A	10° 30'.0 S	105° 32'.0 E
	accompanying block B	10° 30'.0 S	105° 41'.0 E
Substitute	accompanying ZOC diagram	10° 23'.0 S	106° 07'.0 E

**439\* INDIAN OCEAN - Cocos Islands - Depth; beacon**

Patrick Ports (AA593955, AA593985)

**Aus 607 [193/2012]**

Substitute	port lateral topmark for starboard lateral topmark	12° 07'.02 S	96° 53'.42 E
	port lateral topmark for starboard lateral topmark	12° 07'.24 S	96° 52'.75 E
Delete	depth, 4 <sub>8</sub> m, and enclosing contour	12° 05'.84 S	96° 52'.00 E

**440\* AUSTRALIA - WESTERN AUSTRALIA - Dampier Archipelago - Mooring buoy northwestwards**

Former Notice - 1405(T)/2010 is cancelled

MV *Mermaid Vision* (AA595927)**Aus 327 [233/2012]**

Move	lit mooring buoy	19° 34'.9 S	116° 03'.4 E
	to	19° 38'.50 S	116° 02'.59 E

**441\* AUSTRALIA - WESTERN AUSTRALIA - Ashburton Road - Depth**

Racal Survey Australia (DHDB 245861)

**Aus 328** [101/2012]Insert depth, 1<sub>5</sub>m, enclosed by contour 21° 39'.91 S 114° 49'.47 EDelete depth, 7<sub>6</sub>m 21° 40'.2 S 114° 49'.0 E**Aus 743** [144/2012]Insert depth, 1<sub>5</sub>m, enclosed by contour 21° 39'.91 S 114° 49'.47 E**Aus 744** [327/2012]Insert depth, 1<sub>5</sub>m, enclosed by contour 21° 39'.91 S 114° 49'.47 E**442\* AUSTRALIA - WESTERN AUSTRALIA - Garden Island - Anchorage area; depth**

Australian Hydrographic Service (AA595766)

**Aus 117** [329/2012]Insert accompanying block 32° 09'.7 S 115° 40'.3 E  
depth, 4<sub>1</sub>m, and extend contour W to enclose 32° 09'.351 S 115° 39'.302 EDelete depth, 5<sub>4</sub>m 32° 09'.35 S 115° 39'.36 E**AX 70117** [329/2012]Insert accompanying block 32° 09'.7 S 115° 40'.3 E  
depth, 4<sub>1</sub>m, and extend contour W to enclose 32° 09'.351 S 115° 39'.302 EDelete depth, 5<sub>4</sub>m 32° 09'.35 S 115° 39'.36 E**443\* AUSTRALIA - WESTERN AUSTRALIA - Cockburn Sound - Medina Channel - Mooring buoy**

Fremantle Ports Notice 1/2012 (AA593971)

**Aus 114** [904/2011]

Insert lit yellow barrel mooring buoy, Iso. Y.2s 32° 10'.80 S 115° 46'.14 E

**Aus 117** [442/2012]

Insert lit yellow barrel mooring buoy, Iso. Y.2s 32° 10'.80 S 115° 46'.14 E

**AX 70117** [442/2012]

Insert lit yellow barrel mooring buoy, Iso. Y.2s 32° 10'.80 S 115° 46'.14 E

**444\* AUSTRALIA - WESTERN AUSTRALIA - Inner Island - Anchorage**

UKHO (AA595368)

**Aus 118** [964/2011]

Delete anchorage 35° 00'.1 S 118° 08'.6 E

**Aus 759** [964/2011]

Delete anchorage 35° 00'.1 S 118° 08'.6 E

**AX 00118S** [NE 9/2/2012]

Delete anchorage 35° 00'.1 S 118° 08'.6 E

**445\* AUSTRALIA - SOUTH AUSTRALIA - Lacy Islands to Ceduna - Wreck; aeronautical beacon**  
UKHO (AA595818)

**Aus 341 [147/2012]**

Substitute	safe clearance depth, 35m, enclosed by danger circle with legend, <i>Wk (PA)</i> , for wreck	32° 19'.6 S	133° 19'.0 E
------------	--	-------------	--------------

Delete	aero beacon	32° 07'.9 S	133° 43'.6 E
--------	-------------	-------------	--------------

**Aus 4727 (INT 727) [330/2012]**

Substitute	safe clearance depth, 35m, enclosed by danger circle with legend, <i>Wk</i> , for wreck	32° 19'.6 S	133° 19'.0 E
------------	---	-------------	--------------

Delete	aero beacon	32° 07'.9 S	133° 43'.6 E
--------	-------------	-------------	--------------

**446\* AUSTRALIA - SOUTH AUSTRALIA - Yatala Channel - Navline; legend**

Australian Hydrographic Service (AA593008)

**Aus 122 [37/2012]**

Insert	dashed line between	32° 11'.78 S	133° 34'.62 E
		32° 12'.29 S	133° 34'.09 E

Substitute	continuous line for dashed line, between	32° 12'.29 S	133° 34'.09 E
		32° 13'.50 S	133° 32'.81 E

Amend	legend to 042°	32° 13'.15 S	133° 33'.17 E
-------	----------------	--------------	---------------

Delete	two directional arrow, centred on	32° 13'.06 S	133° 33'.28 E
--------	-----------------------------------	--------------	---------------

**447\* AUSTRALIA - SOUTH AUSTRALIA - Streaky Bay - Legend**

Australian Hydrographic Service (AA595243)

**Aus 121 (plan, Streaky Bay) [393/2012]**

Insert	magenta legend, <i>Adjoining Chart Aus 120</i> , in N border	32° 26'.9 S	133° 48'.5 E
--------	--	-------------	--------------

**448\* AUSTRALIA - SOUTH AUSTRALIA - Port Victoria - Marine farms**

UKHO (AA595369)

**Aus 776 [38/2012]**

Delete	marine farm symbol	34° 27'.6 S	137° 26'.6 E
	marine farm symbol	34° 28'.1 S	137° 24'.9 E

**AX 00776S [NE 9/2/2012]**

Delete	marine farm symbol	34° 28'.1 S	137° 24'.9 E
	marine farm symbol	34° 27'.6 S	137° 26'.6 E

**449\* AUSTRALIA - SOUTH AUSTRALIA - Nepean Bay - Beatrice Islets - Light beacon**

UKHO (AA595367)

**Aus 129 [NC 27/1/2012]**

Amend	light range to 8/5M	35° 38'.4 S	137° 41'.7 E
-------	---------------------	-------------	--------------

**450\* AUSTRALIA - VICTORIA - Port Phillip - West Channel - Beacon; restricted area**  
 Australian Hydrographic Service (AA13858, AA502116)

**Aus 143** [395/2012]

Insert	beacon, without topmark	38° 12'.15 S	144° 43'.39 E
Move	restricted area, centred on to	38° 12'.1 S 38° 12'.15 S	144° 43'.3 E 144° 43'.39 E
Delete	light buoy	38° 12'.1 S	144° 43'.3 E

**451\* AUSTRALIA - VICTORIA - Venus Bay - Light buoy**  
 Victorian Notice 84/2012 (AA595819)

**Aus 801** [863/2011]

Move	light buoy to	38° 39'.4 S 38° 39'.47 S	145° 43'.2 E 145° 43'.48 E
------	------------------	-----------------------------	-------------------------------

**452\* PACIFIC OCEAN - Solomon Islands - Ndende Island to Madehas Island - Light; aeronautical beacons**  
 BA Notice 15/1621/2012 (AA592154)

**Aus 4060 (INT 60)** [149/2012]

Delete	light	9° 24'.0 S	159° 56'.0 E
	aero beacon	11° 34'.0 S	160° 05'.0 E
	aero beacon	10° 43'.0 S	165° 47'.0 E
	aero beacon	10° 27'.0 S	161° 55'.0 E
	aero beacon	9° 25'.0 S	160° 01'.0 E
	aero beacon	8° 06'.0 S	156° 50'.0 E
	aero beacon	6° 18'.0 S	155° 42'.0 E
	aero beacon	5° 26'.0 S	154° 38'.0 E

**Aus 4604 (INT 604)** [1261/2011]

Delete	light	9° 24'.0 S	159° 56'.0 E
	aero beacon	11° 34'.0 S	160° 05'.0 E
	aero beacon	10° 27'.0 S	161° 55'.0 E
	aero beacon	9° 25'.0 S	160° 01'.0 E
	aero beacon	8° 06'.0 S	156° 50'.0 E
	aero beacon	6° 18'.0 S	155° 42'.0 E
	aero beacon	5° 26'.0 S	154° 38'.0 E
	aero beacon	10° 43'.0 S	165° 47'.0 E

**AX 04604U** [NE 20/4/2012]

Delete	light	9° 24'.0 S	159° 56'.0 E
	aero beacon	11° 34'.0 S	160° 05'.0 E
	aero beacon	10° 27'.0 S	161° 55'.0 E
	aero beacon	9° 25'.0 S	160° 01'.0 E
	aero beacon	8° 06'.0 S	156° 50'.0 E
	aero beacon	6° 18'.0 S	155° 42'.0 E
	aero beacon	5° 26'.0 S	154° 38'.0 E
	aero beacon	10° 43'.0 S	165° 47'.0 E

**453(T)/2012 AUSTRALIA - NEW SOUTH WALES - Newcastle - Depth information**

Former Notice - 294(T)/2012 is cancelled

Newcastle Port Corporation (AA595129)

Available depths as at 20 April 2012:

<i>Berth</i>	<i>Metres</i>
Western Basin 3	11.3
Western Basin 4	11.3
Eastern Basin 1	11.3
Eastern Basin 2 North of Ch 450	11.6
* Eastern Basin 2 South of Ch 450	11.0
Channel Berth	8.3
Dyke 1	12.5
Dyke 2	12.3
Dyke 4	16.5
* Dyke 5	16.5
Dyke 6	6.3
Mayfield 4 Ch 27 to 266	12.2
BHP Wharf 6 to Ch 1050	7.3
Kooragang 2	11.3
Kooragang 2 North Dolphin Ch 182 to 228	11.2
Kooragang 2 South Dolphin Ch -92 to 00	11.2
Kooragang 3	12.8
Kooragang 4	16.5
Kooragang 5	16.5
Kooragang 6	16.5
* Kooragang 7	16.5
Kooragang 8	16.5
Kooragang 9	16.3
Kooragang Ship Receiving KSR	7.5
Throsby 1	8.4
Carrington Wharf	To be sounded as and when required
Foreshore Park Berth	5.9
Elgo Wharf	To be sounded as and when required
<i>Channels</i>	
Entrance Approach	17.7
Entrance Channel (18.0m)	18.0
Entrance Channel (17.4m)	17.4
Entrance Channel (16.8m)	16.8
Entrance Channel (16.2m)	16.2
Entrance Channel to Horseshoe	15.2
Horseshoe	15.0
Steelworks Channel to Swinging Basin	15.0
Swinging Basin	15.0
Hunter River South Arm (Kooragang 6 to buoy 16)	15.2
Hunter River South Arm (buoy 16 to buoy 18)	14.9
* Basin Cutting	12.6
Basin Area to Eastern & Western Basin Berths	12.3
Basin Area to 1 Throsby	9.4
Stockton Crossing	3.6
* Indicates revised entry.	

**Chart temporarily affected – Aus 207 – Aus 208**

**454(T)/2012 AUSTRALIA - QUEENSLAND - Moreton Bay - Brisbane River - Depth information**

Former Notice - 341(T)/2012 is cancelled

Brisbane Port Corporation (AA597001)

Available depths and under keel clearances (UKC) at 2 May 2012:

<i>Berth</i>	<i>Metres</i>	<i>Remarks</i>
Fisherman Islands No10	14.0	
Fisherman Islands No9	14.0	
Fisherman Islands No8	14.0	
* Fisherman Islands No7	14.0	
Fisherman Islands No6	14.0	
* Fisherman Islands No5	13.7	
* Fisherman Islands No4	13.9	
Fisherman Islands No3	13.7	
Fisherman Islands No2	13.8	
* Fisherman Islands No1	13.9	
Fisherman Islands Grain and Woodchip	13.2	
* Caltex Fisherman Islands	14.5	
* Fisherman Islands Coal	13.8	
* Fisherman Islands General Purpose	11.4	
* BP Luggage Point	14.1	
Caltex Products	10.1	
* Cement Australia Co Wharf	9.3	
* BP Products	10.7	
* Shell	10.9	
Pacific Terminals	10.1	
* Incitec North	10.0	
* Incitec South	10.5	
* Pinkenba 1	10.1	
* Pinkenba 2	10.1	
Riverside Marina	-	
Sugar Terminal	9.8	
* Cairncross Fitting Out Wharf	8.5	
* Cairncross Breasting Wharf	7.0	
Brisbane Naval Wharf	4.3	
Maritime No3	5.6	(not maintained)
* Maritime No2	7.9	
Maritime No1	9.0	
* Hamilton No4	10.2	
* Hamilton No1	8.8	
* Brisbane Cruise Ship Terminal	8.8	
	<i>Metres</i>	<i>UKC/Remarks</i>
<i>Moreton Bay :</i>		
North East Channel	5.5	1.5
North West Channel	15.0	2.3 (280m width)
North West Bypass Channel	9.2	1.6
Spitfire Channel	14.9	1.5 (600m width)
East Knoll Bypass Channel	6.0	1.4
East Channel	15.0	1.5 (300m width from western side)
Main Channel (M8 - M9)	10.0	1.8
Entrance Channel (E5 - EBCN)	14.7	1.5
<i>Brisbane River :</i>		
Entrance Beacons and Bar Cutting	13.9	1.46
* Fisherman Islands Swing Basin	13.8	1.3
Pelican Banks Reach to Hamilton Reach	9.1	0.6 / 0.9 (draft/tide)
Cement Australia Swing Basin	9.1	0.6 / 0.9 (draft/tide)
Pinkenba Swing Basin	9.1	0.6 / 0.9 (draft/tide)
Hamilton Swing Basin	8.7	0.6 / 0.9 (draft/tide)
* Indicates new or revised entry.		

**Chart temporarily affected – Aus 235 – Aus 236 – Aus 237 – Aus 238 – Aus 814 – Aus 815**

**455(T)/2012 AUSTRALIA - QUEENSLAND - Mooloolaba - Shoaling; dredging operations***Former Notice - 400(T)/2012 is cancelled*

Maritime Safety Queensland Notice 415(T)/2012 (AA596395)

Shoaling with a least depth of *0.7m* exists within the main channel to Mooloolah River, between positions 26° 40'.74 S 153° 07'.95 E and 26° 40'.74 S 153° 07'.83 E. A least depth of *2.3m* exists between positions 26° 40'.74 S 153° 07'.83 E and 26° 40'.81 S 153° 07'.93 E. A port lateral light buoy, *Q.R*, exists in position 26° 40'.80 S 153° 07'.85 E and marks the western edge of the shoal.

The leading lights (26° 40'.97 S 153° 08'.17 E and 26° 40'.93 S 153° 08'.14 E) are temporarily unlit.

The dredge *Saibai* and support vessels *Bula* and *Sigma* are conducting dredging operations in Mooloolah River. A floating pipeline exists from the dredge *Saibai* to the western breakwater. The dredges will display appropriate lights and shapes and will monitor VHF Ch 12, 16 and 73.

Mariners are advised to navigate with caution in the area.

**Chart temporarily affected – Aus 235****456(T)/2012 AUSTRALIA - QUEENSLAND - Port Alma - Seabed coring operations***Date - Until 22 May 2012*

Maritime Safety Queensland Notice 384(T)/2012 (AA595077)

The dump barge *Seabed Investigator* and support vessel *RV GeoCoastal* are conducting seabed coring operations in area bounded by the following positions:

23° 35'.07 S 150° 51'.76 E  
 23° 35'.09 S 150° 52'.01 E  
 23° 36'.90 S 150° 51'.43 E  
 23° 36'.96 S 150° 51'.76 E.

Mariners are advised to navigate with caution in the area.

**Chart temporarily affected – Aus 247 – Aus 265****457(T)/2012 AUSTRALIA - QUEENSLAND - Shoalwater Bay - Live firing***Date - Until 21 May 2012*

Maritime Safety Queensland Notice 402(T)/2012 (AA596051)

Live firing activities will be conducted in the Shoalwater Bay training area during the period 1 May to 20 May 2012.

A marine danger area extends to all waters south of the line defined by the following positions:

22° 23'.84 S 150° 18'.02 E  
 22° 27'.02 S 150° 34'.98 E.

All waters, creeks, beaches and other areas within the declared marine danger area are not available for access.

Mariners are advised to keep clear of this area throughout the above times.

**Chart temporarily affected – Aus 260 – Aus 261 – Aus 367 – Aus 822 – AX 60260 – AX 67261 – AX 00260S – AX 00367S – AX 00822S****458(T)/2012 AUSTRALIA - QUEENSLAND - Dudgeon Point - Scientific instruments***Former Notice - 349(T)/2012 is cancelled**Date - Until 24 October 2012*

Maritime Safety Queensland Notice 421(T)/2012 (AA596176)

Scientific instruments marked by special light buoys, *Q.Y*, exist in positions:

21° 11'.65 S 149° 15'.38 E  
 21° 13'.11 S 149° 17'.09 E  
 21° 14'.58 S 149° 16'.02 E  
 21° 19'.02 S 149° 19'.02 E.

**Chart temporarily affected – Aus 249 – Aus 823 – AX 00249S – AX 00823S**

**459(T)/2012 AUSTRALIA - QUEENSLAND - Schooner Rock - Light beacon destroyed; buoy established***Former Notice - 1187(T)/2010 is cancelled*

Maritime Safety Queensland Notice 399(T)/2012 (AA596079)

The north cardinal light beacon (20° 54'.04 S 149° 25'.91 E) has been destroyed; an unlit north cardinal buoy exists in situ.

**Chart temporarily affected – Aus 251 – Aus 824****460(T)/2012 AUSTRALIA - QUEENSLAND - Hook Island - Cockatoo Point - Light beacon destroyed***Maritime Safety Queensland Notice 393(T)/2012 (AA596297)*The light beacon, *Fl.R.2-5s* (20° 04'.71 S 148° 54'.05 E) has been destroyed.

Mariners are advised to navigate with caution in the area.

**Chart temporarily affected – Aus 252 – Aus 254****461(T)/2012 AUSTRALIA - QUEENSLAND - Townsville - Depth information***Former Notice - 351(T)/2012 is cancelled*

Maritime Safety Queensland Notice 431(T)/2012 (AA596664)

Available depths as at 1 May 2012:

	<i>Metres</i>	<i>Remarks</i>
Sea Channel	11.6	
Platypus Channel	11.6	
<i>Outer Harbour:</i>		
Arrival Channel	7.0	
Departure Channel	10.9	
<i>Inner Harbour:</i>		
Harbour	11.7	
Berths:		
No 1	11.0	
No 2	11.7	
No 3	12.1	
No 4	10.2	
No 7	10.3	
Between No 7 and No 8	9.8	Seaward of 0 mark at No 7
No 8	-	Works in progress
No 9	11.8	
Between No 9 and No 10	10.0	Seaward of 0 mark at No 10
No 10	-	Works in progress
No 11	11.6	
* Ross River Channel	1.5	
Ross River	-	No declared depth
Ross Creek	-	No declared depth

\* Indicates revised entry.

**Chart temporarily affected - Aus256 - Aus257****462(T)/2012 AUSTRALIA - QUEENSLAND - Stephens Island to Double Point - Military exercise completed***Former Notice - 352(T)/2012 is cancelled*

Maritime Safety Queensland Notice 265(T)/2012 (AA590058)

Cancel this notice on receipt.

**Chart formerly affected – Aus 258 – Aus 829**

**463(T)/2012 AUSTRALIA - QUEENSLAND - Port Douglas - Depth information***Former Notice - 621(T)/2010 is cancelled*

Maritime Safety Queensland Notice 423(T)/2012 (AA596398)

Available depths as at 28 April 2012:

*Metres*

* Outer Channel	1.9
Inner Channel	2.1
Boat ramp to marina	1.9
Shoreline to mooring piles from southern side of boat ramp to marina	0.0

\* Indicates revised entry.

**Chart temporarily affected – Aus 270****464(T)/2012 AUSTRALIA - NORTHERN TERRITORY - Darwin - Scientific Instrument***Date - Until 25 June 2012*

Darwin Port Corporation Notice 40(T)/2012 (AA596320)

Scientific instruments marked by special light buoy, *Fl.Y.5s*, exist in the follow positions:

12° 20'.34 S 130° 51'.47 E  
 12° 26'.02 S 130° 49'.06 E  
 12° 29'.26 S 130° 48'.05 E  
 12° 32'.92 S 130° 52'.43 E.

Mariners are advised to navigate with caution in the area.

**Chart temporarily affected – Aus 24 – Aus 26 – Aus 27 – Aus 722 – AX 72722****465(T)/2012 AUSTRALIA - WESTERN AUSTRALIA - Rowley Shoals - Seismic survey northwestwards***Date - Until 7 December 2012*

Woodside Energy Ltd (AA596324, AA596325)

MV *Polarcus Alima* and support vessels *Sealink 161 and Empress*, are conducting a survey in the areas bounded by the following positions:

16° 35'.39 S 118° 55'.36 E  
 16° 07'.09 S 119° 30'.08 E  
 15° 49'.92 S 119° 53'.37 E  
 15° 49'.92 S 120° 15'.08 E  
 15° 58'.81 S 120° 15'.08 E  
 16° 13'.99 S 120° 01'.21 E  
 16° 40'.60 S 119° 30'.08 E  
 17° 24'.92 S 118° 29'.30 E  
 17° 24'.92 S 118° 25'.11 E  
 17° 05'.73 S 118° 10'.08 E  
 16° 34'.92 S 118° 10'.08 E  
 16° 34'.92 S 118° 16'.46 E  
 16° 48'.49 S 118° 27'.07 E  
 16° 48'.49 S 118° 43'.57 E.

**Chart temporarily affected – Aus 325 – Aus 4722 (INT 722) – AX 04722U****466(T)/2012 AUSTRALIA - WESTERN AUSTRALIA - Rowley Shoals - Seismic survey postponed***Former Notice - 416(T)/2012 is cancelled*

Fugro (AA594522, AA594523, AA594524)

Cancel this notice on receipt.

**Chart formerly affected – Aus 325 – Aus 326**

**467(T)/2012 AUSTRALIA - WESTERN AUSTRALIA - Dampier - King Bay - Light beacon destroyed**  
Dampier Port Authority Notice 09/2012 (AA597034)

The No3 light beacon, *Fl(2)G.5s* (20° 37'.75 S 116° 44'.29E), has been destroyed.

**Chart temporarily affected – Aus 59**

**468(T)/2012 AUSTRALIA - WESTERN AUSTRALIA - Barrow Island - Drill rig northwestwards**  
*Former Notice* - 361(T)/2012 is cancelled  
*Date* - Until 4 April 2014  
MODU *Deepwater Frontier* (AA595808)

Drill rig *Deepwater Frontier* is conducting drilling operations in position 19° 49'.84 S 114° 34'.17 E.

**Chart temporarily affected – Aus 328 – Aus 4723 (INT 723) – AX 04723U**

**469(T)/2012 AUSTRALIA - WESTERN AUSTRALIA - Barrow Island - Drill rig northwestwards**  
*Former Notice* - 263(T)/2012 is cancelled  
*Date* - Until 6 July 2012  
MODU *Atwood Eagle* (AA596171, AA596172)

Drill rig *Atwood Eagle* is conducting drilling operations in position 20° 20'.80 S 114° 52'.92 E.

**Chart temporarily affected – Aus 328 – Aus 4723 (INT 723) – AX 04723U**

**470(T)/2012 AUSTRALIA - WESTERN AUSTRALIA - Barrow Island - Drill rig northwestwards**  
*Former Notice* - 262(T)/2012 is cancelled  
*Date* - Until 15 June 2012  
Chevron Australia Pty Ltd (AA596226)

Drill rig *Atwood Osprey* is conducting drilling operations in position 20° 24'.48 S 114° 50'.96 E.

**Chart temporarily affected – Aus 328 – Aus 4723 (INT 723) – AX 04723U**

**471(T)/2012 AUSTRALIA - WESTERN AUSTRALIA - Exmouth Plateau - Seismic survey completed**  
*Former Notice* - 1339(T)/2011 is cancelled  
TGS-NOPEC (AA597291)

Cancel this notice on receipt.

**Chart formerly affected – Aus 4723 (INT 723) – AX 04723U**

**472(T)/2012 AUSTRALIA - WESTERN AUSTRALIA - Passage Islands - Obstructions**  
*Date* - Until 15 May 2013  
Department of Transport WA Notice 53/2012 (AA597010)

Obstructions exist in the following positions:

21° 11'.28 S 115° 47'.70 E  
21° 07'.76 S 115° 50'.10 E  
21° 06'.01 S 115° 46'.93 E  
21° 08'.15 S 115° 43'.83 E.

**Chart temporarily affected – Aus 743**

**473(T)/2012 AUSTRALIA - WESTERN AUSTRALIA - Mary Anne Group to Ashbuton Road - Scientific instruments**

Former Notices - 579(T)/2011, 261(T)/2012 are cancelled

Date - Until 25 February 2013

Department of Transport WA Notice 42/2012 (AA596300)

Scientific instruments marked by special light buoys, *Fl. Y.6s*, exist in the following positions:

21° 19'.59 S 115° 23'.48 E	21° 19'.69 S 115° 09'.41 E
21° 31'.78 S 115° 05'.32 E	21° 31'.81 S 115° 05'.33 E
21° 31'.81 S 114° 46'.23 E	21° 32'.53 S 115° 03'.14 E
21° 32'.55 S 115° 03'.15 E	21° 32'.62 S 115° 02'.87 E
21° 32'.65 S 115° 02'.88 E	21° 32'.68 S 115° 02'.71 E
21° 32'.69 S 115° 02'.36 E	21° 32'.70 S 115° 02'.72 E
21° 32'.71 S 115° 02'.37 E	21° 32'.73 S 115° 02'.20 E
21° 32'.76 S 115° 02'.21 E	21° 32'.81 S 115° 01'.92 E
21° 32'.82 S 115° 04'.61 E	21° 32'.84 S 115° 01'.93 E
21° 33'.43 S 114° 59'.70 E	21° 33'.46 S 114° 59'.71 E
21° 34'.01 S 115° 00'.98 E	21° 34'.15 S 115° 03'.42 E
21° 35'.80 S 115° 01'.56 E	21° 35'.86 S 115° 01'.37 E
21° 35'.87 S 115° 01'.57 E	21° 35'.90 S 115° 01'.40 E
21° 35'.92 S 115° 01'.06 E	21° 35'.96 S 115° 01'.10 E
21° 36'.49 S 114° 58'.85 E	21° 36'.55 S 114° 58'.85 E
21° 37'.87 S 114° 41'.40 E	21° 38'.93 S 114° 55'.54 E
21° 43'.09 S 114° 46'.22 E.	

**Chart temporarily affected – Aus 63 – Aus 64 – Aus 743 – Aus 744**

**474(T)/2012 AUSTRALIA - WESTERN AUSTRALIA - Koombana Bay - Scientific Instrument**

Date - Until 30 January 2014

Department of Transport WA Notice 46/2012 (AA596083)

Scientific instrument marked by a spherical special buoy exist in position, 33° 19'.17 S 115° 39'.05 E.

**Chart temporarily affected – Aus 115**

**475(T)/2012 AUSTRALIA - WESTERN AUSTRALIA - Port Geographe - Shoaling removed**

Former Notice - 878(T)/2011 is cancelled

Department of Transport WA Notice 47/2012 (AA597333)

Cancel this notice on receipt.

**Chart formerly affected – Aus 116**

**476(T)/2012 AUSTRALIA - TASMANIA - D'entrecasteaux Channel - Marine farm**

Date - Until 30 May 2012

Marine and Safety Tasmania Notice 46/2012 (AA596685)

Mariners are advised the marine farm has extended it's boundaries as follows:

43° 20'.65 S 147° 07'.75 E
43° 21'.20 S 147° 07'.17 E
43° 21'.56 S 147° 07'.69 E
43° 21'.08 S 147° 08'.18 E.

**Chart temporarily affected – Aus 173**

**477(T)/2012 AUSTRALIA - TASMANIA - Inspection Head - Light beacon unlit**

Marine and Safety Tasmania Notice 47/2012 (AA597008)

The light beacon, *Fl.G.1.5s* (41° 08'.72 S 146° 49'.53 E) is unlit.

**Chart temporarily affected – Aus 167**

**478(T)/2012 AUSTRALIA - VICTORIA - Port Phillip - Davey Point - Beacon destroyed**  
Victorian Notice 87(T)/2012 (AA597028)

The North cardinal beacon (38° 09'.67 S 145° 05'.09 E) has been destroyed.

**Chart temporarily affected – Aus 143**

**479(T)/2012 AUSTRALIA - VICTORIA - Toora Channel - Light beacon destroyed; light buoy established**  
Victorian Notice 85(T)/2012 (AA596048)

The No15 light beacon (38° 42'.47 S 146° 21'.45 E) has been destroyed; an unlit starboard buoy, exists in situ.

**Chart temporarily affected – Aus 181**

**480(T)/2012 AUSTRALIA - CORAL SEA - Light buoy off station**  
*Former Notice - 274(T)/2012 is cancelled*  
Australian Bureau of Meteorology (AA596762)

The light buoy, *Fl. Y.2s*, (14° 47'.8 S 153° 34'.7 E), is drifting and currently in position 14° 24'.77 S 155° 01'.57 E (30 Apr 2012).

**Chart temporarily affected – Aus 4621 (INT 621) – AX 04621U**

II

**HYDROGRAPHIC REPORTS**

Nil Reports

**NAVIGATION WARNINGS**

The following radio messages have been received during the period to 4 May 2012. Signal copies of these messages may be destroyed. It is recommended that the reprint of Navigational Warnings should be kept in a file or a book divided into areas. Cancellation should be made on receipt of signals and reprints.

Rigs on location other than those listed in the latest Section III summary are the subject of Radio Navigational Warnings. Rigs in transit will not be the subject of Warnings.

**AUSCOAST WARNING**

- 105 Cancelled.  
 106 Cancelled.  
 107 Drill rig *Nan Hai 6* in position 21° 31'.40 S 114° 06'.62 E. 2.5M clearance requested.  
 108 Cancelled.  
 109 Cancelled.  
 110 Drill ship *Deepwater Frontier* in position 19° 49'.84 S 114° 34'.17 E. 2.5M clearance requested.  
 111 Cancelled.  
 112 Quetta Rock buoy AIS aid to navigation MMSI 995031040 10° 40'.25 S 142° 37'.50 E inoperative.  
 113 Cancelled.  
 114 Special purpose vessel *Ramform Explorer* conducting seismic survey towing 3.5M cable in an area bounded by 14° 16'.0 S to 15° 08'.0 S and 122° 27'.0 E to 122° 46'.0 E. 4M clearance requested.  
 115 Drill rig *Atwood Eagle* in position 20° 20'.47 S 114° 52'.55 E. 2.5M clearance requested.  
 116 Drill rig *Ocean Patriot* in position 11° 55'.15 S 125° 01'.11 E. 2.5M clearance requested.  
 117 Cancelled.  
 118 Special purpose vessel *Ramform Sterling* conducting seismic survey in an area bounded by 33° 34'.0 S to 34° 44'.0 S and 129° 59'.0 E to 131° 29'.0 E. 6M clearance requested.  
 119 Cancelled.  
 120 Lady Musgrave Islet light K2963 in position 23° 54'.52 S 152° 23'.53 E unlit.

**NAVAREA X WARNINGS**

Nil.

**Navigational warnings in force as at 040001UTC MAY 12.****Auscoast**

2011 337 338

2012 078 080 086 092 094 096 097 099 102 103 104 107 110 112 114 116 118 120

**Navarea X**

2012 005 008

**Summary of mobile drilling rigs as at 040001UTC MAY 12.**

<i>Name</i>	<i>Position</i>
Ocean Patriot	11° 55'.15 S 125° 01'.11 E
EnSCO 109	12° 40'.20 S 124° 32'.22 E
Transocean Legend	13° 39'.24 S 122° 17'.52 E
EnSCO 104	20° 36'.10 S 115° 36'.80 E
Atwood Eagle	20° 20'.47 S 114° 52'.55 E
Atwood Osprey	20° 24'.51 S 114° 50'.98 E
Deepwater Frontier	19° 49'.84 S 114° 34'.17 E
Nan Hai 6	21° 31'.40 S 114° 06'.62 E
Jack Bates	20° 04'.96 S 113° 49'.90 E
Ocean America	21° 10'.40 S 113° 07'.43 E
Stena Clyde	38° 58'.00 S 142° 53'.44 E

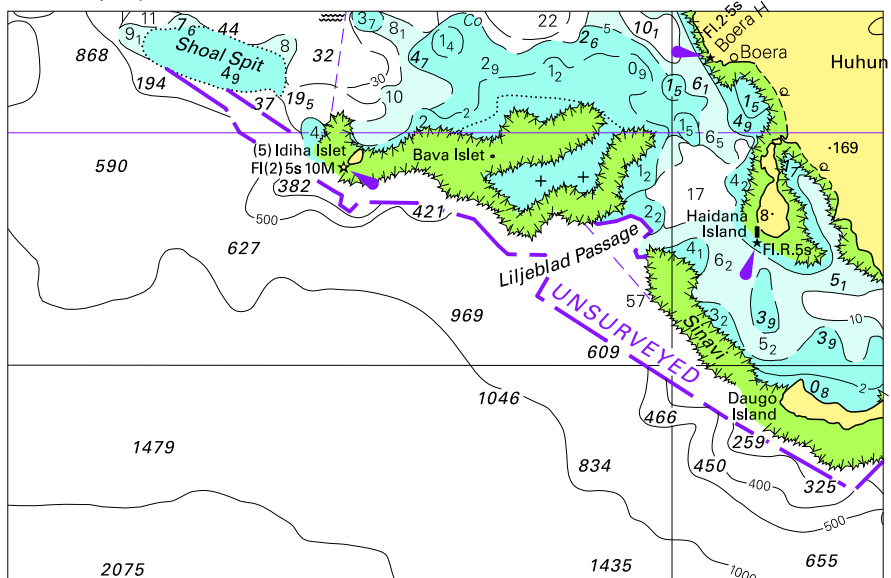
**NAVAREA XIV WARNINGS**

Nil.

**Navarea XIV warnings in force as at 040001UTC MAY 12.**

028

To accompany Australian Notice to Mariners 427/2012



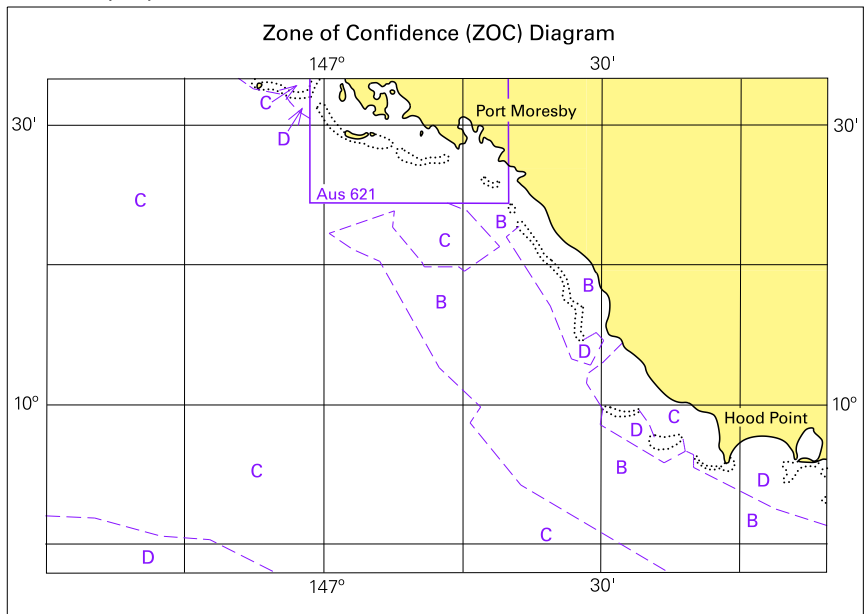
Block for chart Aus 379

© Commonwealth of Australia 2012

(115.8 x 75.1mm)



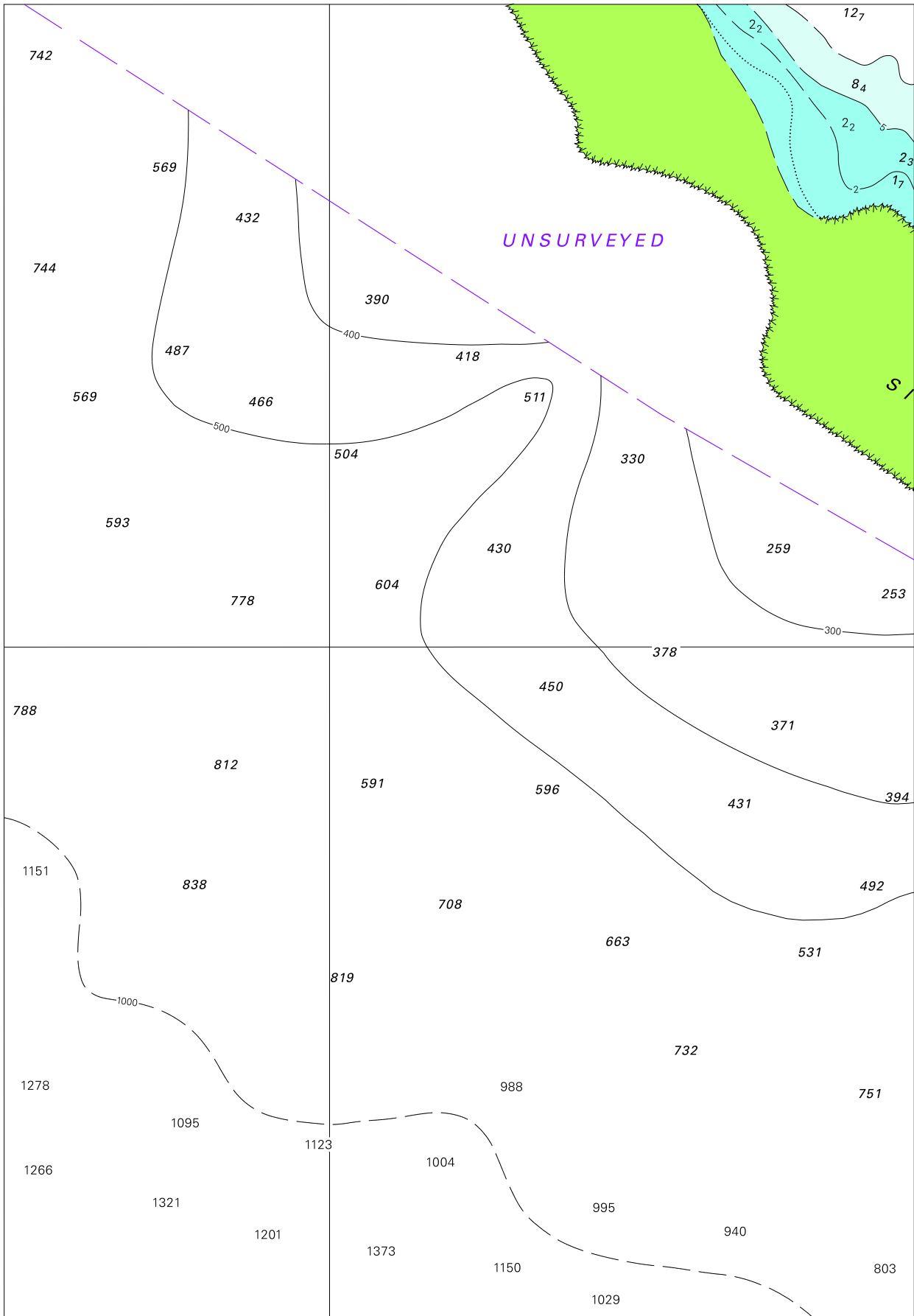
To accompany Australian Notice to Mariners 427/2012



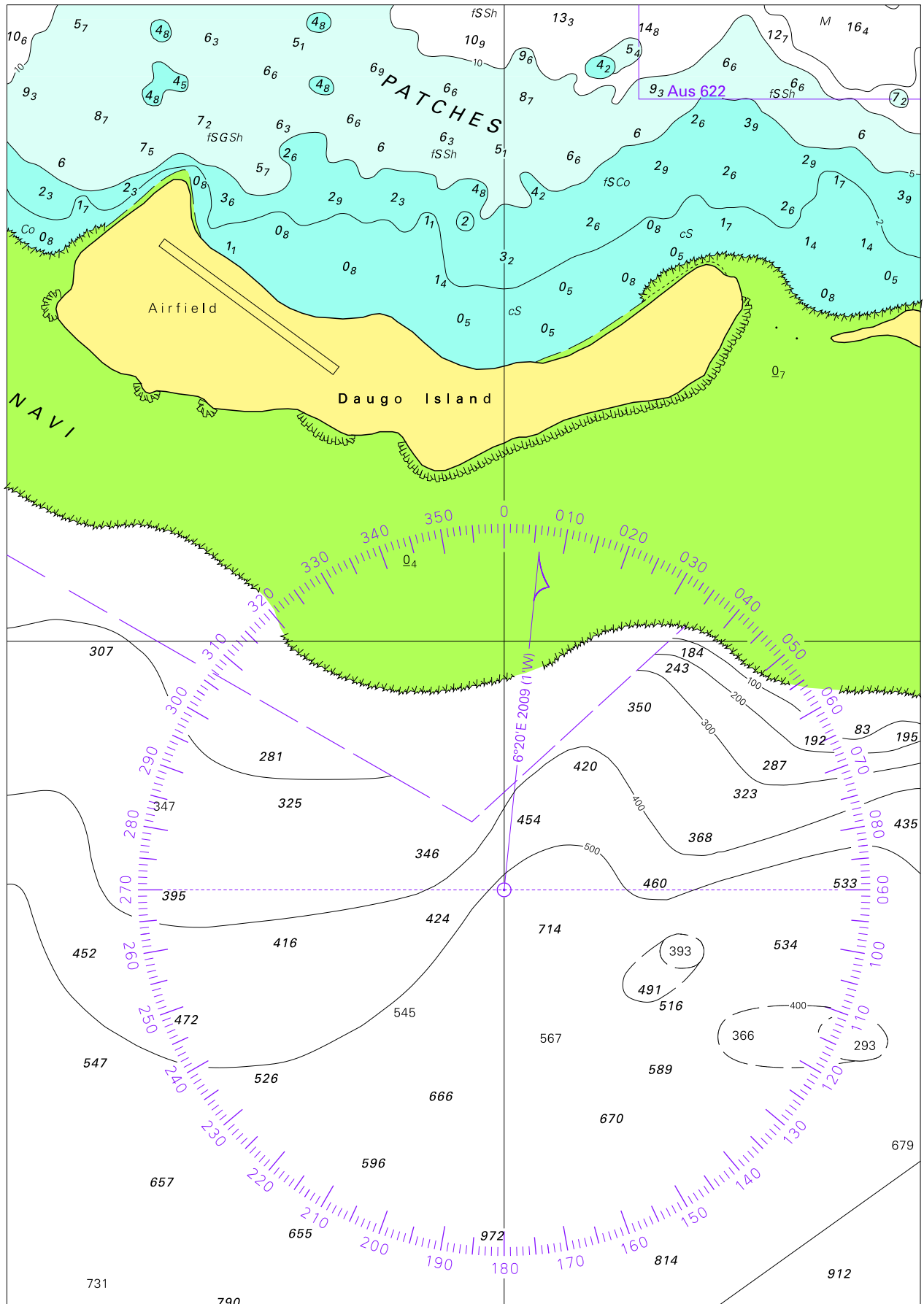
Block B for chart Aus 505

© Commonwealth of Australia 2012

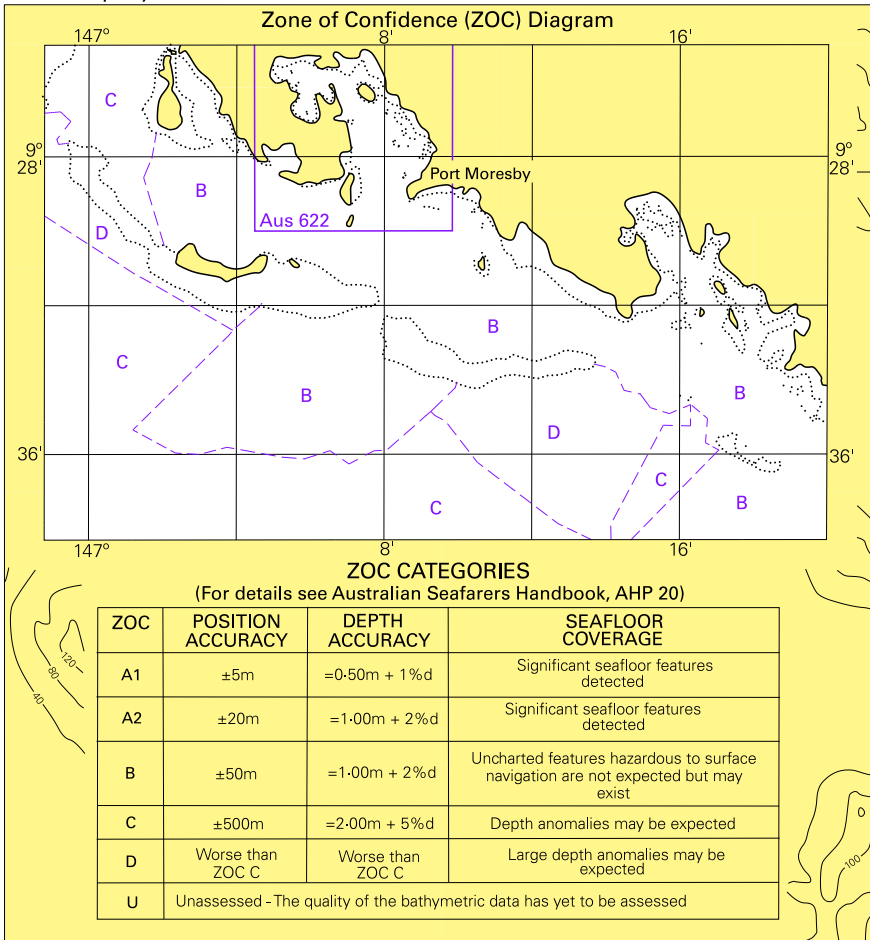
(113.2 x 80.4mm)



To accompany Australian Notice to Mariners 427/2012



To accompany Australian Notice to Mariners 427/2012

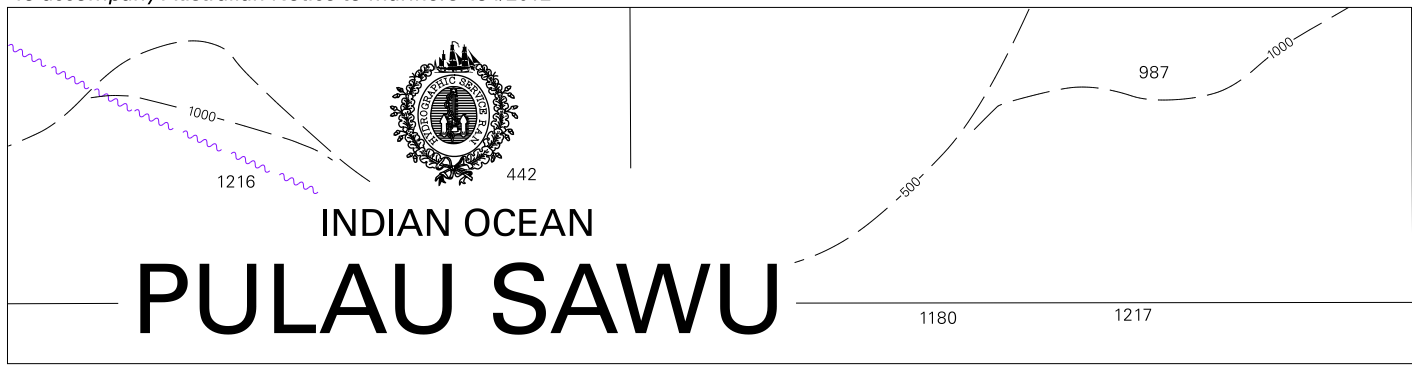


Block for chart Aus 621

© Commonwealth of Australia 2012

(123-8 x 115-5mm)

To accompany Australian Notice to Mariners 434/2012



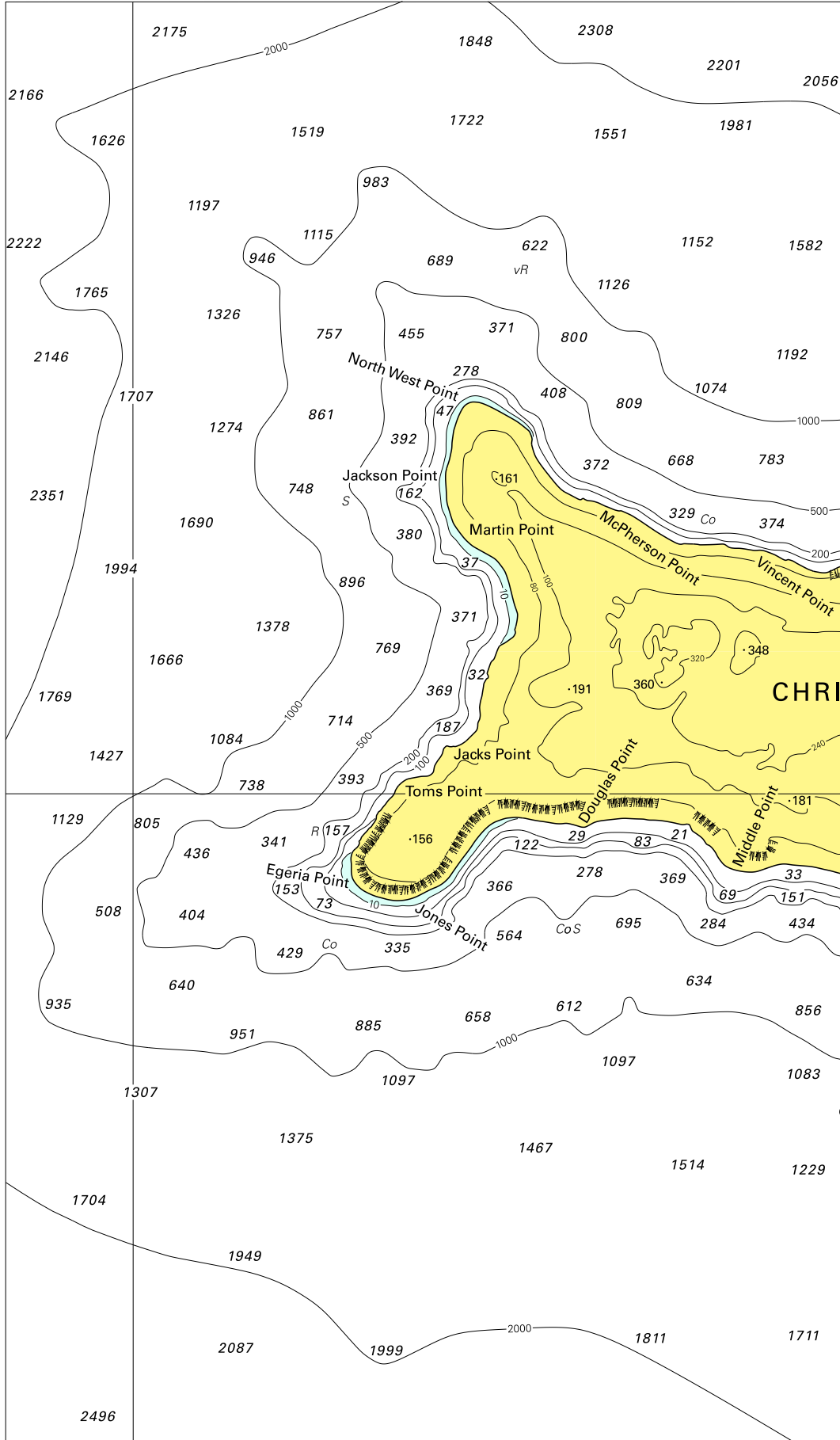
Block for chart Aus 317

© Commonwealth of Australia 2012

(186.0 x47.1mm)



To accompany Australian Notice to Mariners 438/2012

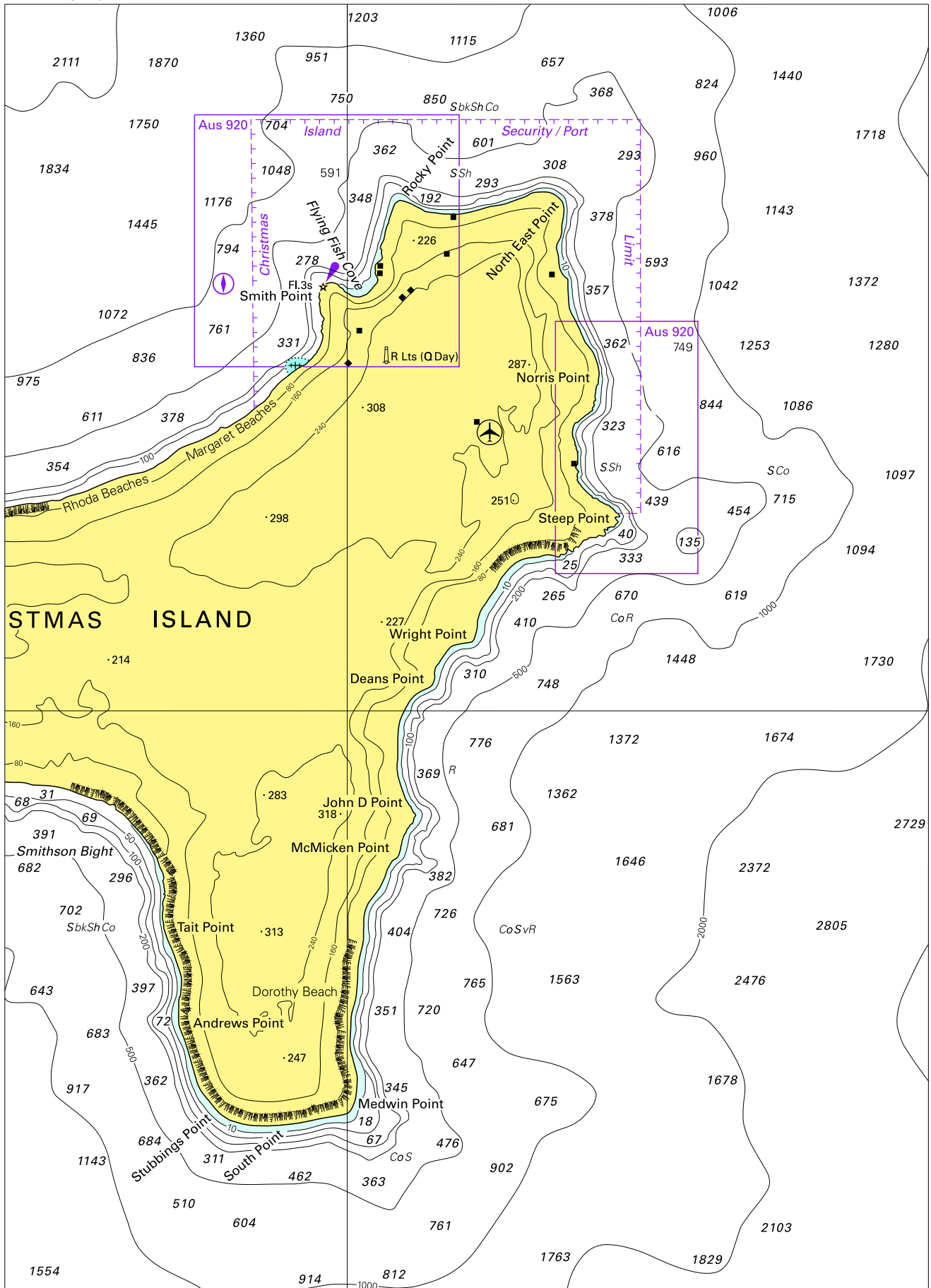


Block A for chart Aus 608

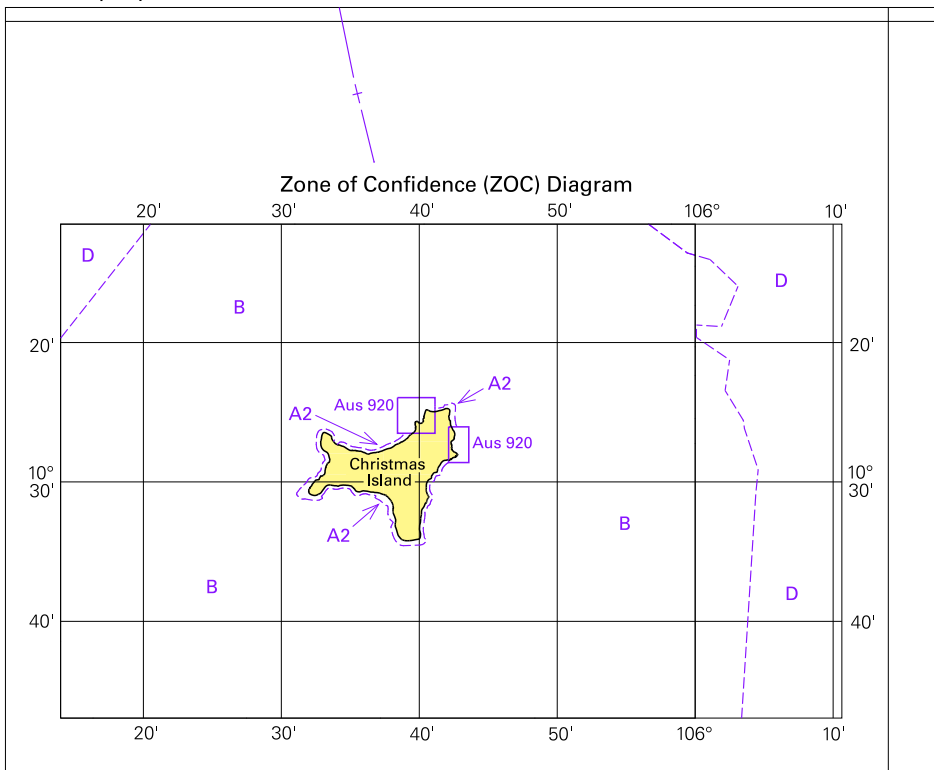
© Commonwealth of Australia 2012

(172.9 x 240.8mm)

To accompany Australian Notice to Mariners 438/2012



To accompany Australian Notice to Mariners 438/2012

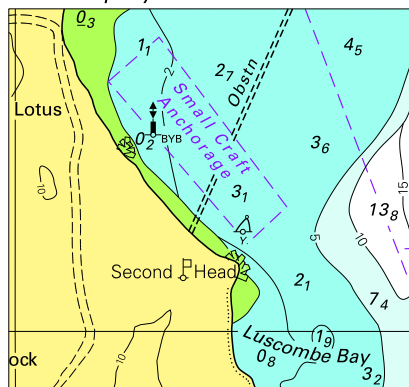


Block for chart Aus 608

© Commonwealth of Australia 2012

(124.1 x 101.4mm)

To accompany Australian Notice to Mariners 442/2012



© Commonwealth of Australia 2012  
Block for chart Aus 117 (50.2 x 53.7mm)