



20 April 2012

Edition 8

Australian Notices to Mariners are the authority for correcting Australian Charts and Publications

AUSTRALIAN NOTICES TO MARINERS

Notices 370 – 420 

Published fortnightly by the Australian Hydrographic Service

Commodore R. NAIRN RAN
Hydrographer of Australia

SECTIONS.

- I. **Australian Notices to Mariners, including blocks and notes.**
- II. **Hydrographic Reports.**
- III. **Navigational Warnings.**

SUPPLEMENTS.

- I. **Tracings**
- II. **Cumulative List of Australian Notices to Mariners.**
- III. **Cumulative List of Temporary and Preliminary Australian Notices to Mariners.**
- IV. **Temporary and Preliminary Notices in force.**
- V. **Amendments to Admiralty List of Lights and Fog Signals (Vol K), Radio Signals (NP 281(2), 282, 283(2), 285, 286(4)) and Sailing Directions (NP 9, 13, 14, 15, 33, 34, 35, 36, 39, 44, 51, 60, 61, 62, 100, 136).**

© Commonwealth of Australia 2012

This work is copyright. Apart from any use permitted under the Copyright Act 1968, no part may be reproduced by any process, adapted, communicated or commercially exploited without prior written permission from The Commonwealth represented by the Australian Hydrographic Service.

IMPORTANT NOTICE

This edition of Notices to Mariners includes all significant information affecting AHS products which the AHS has become aware of since the last edition. All reasonable efforts have been made to ensure the accuracy and completeness of the information, including third party information, on which these updates are based. The AHS regards third parties from which it receives information as reliable, however the AHS cannot verify all such information and errors may therefore exist. The AHS does not accept liability for errors in third party information.

GENERAL INSTRUCTIONS

The substance of these notices should be inserted on the charts affected.

Bearings are referred to the true compass and are reckoned clockwise from North; those relating to lights are given as seen by an observer from seaward. Positions quoted in permanent notices relate to the horizontal datum for the chart(s). When preliminary or temporary notices affect multiple charts, positions will be provided in relation to only one horizontal datum and that datum will be specified. When the multiple charts do not have a common horizontal datum, mariners will be required to adjust the position(s) for those charts not on the specified datum. The range quoted for a light is its nominal range. Depths are with reference to the chart datum of each chart. Heights are above mean high water springs or mean higher high water, as appropriate.

The capital letter (P) or (T) after the number of any notice denotes a preliminary or temporary notice respectively, which are contained separately at the end of the permanent notices. A star (*) adjacent to the number of a notice indicates that the notice is based on original information.

REPORTING OF DANGERS

Mariners are particularly requested to notify the AUSTRALIAN HYDROGRAPHIC SERVICE, Locked Bag 8801 Wollongong, NSW 2500 (Fax 02-4223 6599, e-mail Hydro.NTM@defence.gov.au or, alternatively by filling in and submitting the [Hydrographic Notes](#) forms located on the web site – www.hydro.gov.au), immediately on the discovery of new dangers or suspected dangers to navigation. For changes or defects in aids to navigation notify AusSAR (Fax 02-6230 6868 or email rccaus@amsa.gov.au).

AUTHORISED USE

Copies of Australian notices are available free of charge from the Australian Hydrographic Service (AHS) website (www.hydro.gov.au) and through the eNotices (email) service (www.hydro.gov.au/enotices/enotices.htm).

Individual Notices may be copied for the purpose of inserting Notice substance on official charts and publications. Paper copies may be printed by chart agents and distributed to customers on a cost recovery basis. Participating chart agents are listed on the AHS website as providing a 'Paper Notices to Mariners' service (www.hydro.gov.au/prodserv/distributors/distributors.htm). Copies of the notices may not be sold for profit without prior written agreement.

NUMERICAL INDEX OF NOTICES TO MARINERS

Edition No 8

Notices	Aus Chart, INT Chart, AHP
370.....	Aus 120, AU5133P1, 5133P2, 5134P1, 5135P1, 5135P2, 5136P2, 5136P3, 5777P1
371.....	Amendment to Australian National Tide Tables 2012
372.....	Amendment to Australian Notice to Mariners No 12
373.....	Aus 197, 809, AX 00809S
374.....	Aus 222, 812, 813
375.....	Aus 230, 813, 814
376.....	Aus 235, 236, 815
377.....	Aus 235, 815
378.....	Aus 815
379.....	Aus 246
380.....	Aus 247, 819, 820, AX 00820S
381.....	Aus 249, 250, 251, AX 00249S
382.....	Aus 249, 250, AX 00249S
383.....	Aus 256, 827
384.....	Aus 830, AX 6027S
385.....	Aus 270
386.....	Aus 678
387.....	Aus 700
388.....	Aus 4, 701
389.....	Aus 309, 310, AX 0309F, 0310F, 72309
390.....	Aus 903
391.....	Aus 905
392.....	Aus 32
393.....	Aus 121
394.....	Aus 485
395.....	Aus 143, 158
396.....	Aus 182
397(T).....	Aus 236
398(T).....	Aus 236
399(T).....	Aus 237
400(T).....	Aus 235
401(T).....	Aus 244, 245
402(T).....	Aus 245
403(T).....	Aus 250
404(T).....	Aus 252, 253
405(T).....	Aus 268
406(T).....	Aus 826, 827
407(T).....	Aus 256, 827
408(T).....	Aus 258
409(T).....	Aus 262, 263, 264, 830
410(T).....	Aus 262, AX 63262
411(T).....	Aus 262, 263, AX 63262
412(T).....	Aus 270
413(T).....	Aus 672
414(T).....	Aus 6
415(T).....	Aus 320, 322, AX 0322F
416(T).....	Aus 325, 326
417(T).....	Aus 329, 4723, 4725, INT 723, 725, AX 4723F
418(T).....	Aus 119
419(T).....	Aus 171, 173, 174, 795, 796
420(T).....	Aus 143, 157, 158

370 AUSTRALIA - Product

Australian Hydrographic Service (AA592719, AA593689)

New Edition

<i>Chart</i>	<i>Published</i>	<i>Title and description of amendments</i>	<i>Scale</i>	<i>Index Chart</i>	<i>Price</i>
Aus 120	23/03/2012	Australia - South Coast - South Australia - Approaches to Thevenard 32° 04'.2 S - 32° 30'.7 S 133° 03'.8 E - 133° 57'.2 E Plan: Murat Bay	1:75 000	Aus 5001	\$35.00
		32° 05'.00 S - 32° 09'.30 S 133° 34'.26 E - 133° 40'.40 E <i>New edition referred to WGS84 datum and LAT; including the latest surveys.</i>	1:37 500		

New Electronic Navigation Chart (Seafarer ENC)

<i>Cell Name</i>	<i>Released</i>	<i>Title</i>
AU5133P1	April 2012	South Australia - Wallaroo
AU5133P2	April 2012	South Australia - Port Lincoln
AU5135P1	April 2012	South Australia - Whyalla
AU5135P2	April 2012	South Australia - Port Bonython

Chart permanently withdrawn

<i>Chart</i>	<i>On publication of new chart</i>
Aus 120	Aus 120

Electronic Navigation Chart (Seafarer ENC) permanently withdrawn

<i>Cell</i>	<i>On publication of new cell</i>
AU5134P1	AU5133P1
AU5136P2	AU5135P2
AU5136P3	AU5135P1
AU5777P1	AU5133P2

For further details refer to the AHS website at www.hydro.gov.au for new edition and new chart stock arrival information.

When placing orders with a chart agent, mariners should advise whether their order pertains to the current edition or the new edition.

371 AUSTRALIA - Product - Amendment to Australian National Tide Tables 2012

Australian Hydrographic Service (AA591459)

Page 388

Amend Glenelg To Chart Datum to 0.0*Amend* Port Stanvac To Chart Datum to 0.0*Amend* Penneshaw To Chart Datum to 0.0**372 AUSTRALIA - Product - Amendment to Australian Notice to Mariners No 12**

Australian Hydrographic Service (AA593035)

Page 77

Amend E of Bungan Head Position of Centre of Area to 33° 40' 21".0 S 151° 22' 58".0 E and Radius of Area in Miles to 0.27.

373* AUSTRALIA - NEW SOUTH WALES - Bungan Head - Restricted area

Australian Hydrographic Service (AA593035)

Aus 197 [90/2012]

Insert restricted area with radius 0.27M, centred on 33° 40'.35 S 151° 22'.97 E

Delete restricted area, centred on 33° 40'.4 S 151° 23'.0 E

Aus 809 [90/2012]

Insert restricted area with radius 0.27M, centred on 33° 40'.35 S 151° 22'.97 E

Delete restricted area, centred on 33° 40'.4 S 151° 23'.0 E

AX 00809S [NE 9/2/2012]

Insert restricted area with radius 0.27M, centred on 33° 40'.35 S 151° 22'.97 E

Delete restricted area, centred on 33° 40'.4 S 151° 23'.0 E

374* AUSTRALIA - NEW SOUTH WALES - Clarence River - Yamba - Nav aids

Port of Yamba Notice 4/2012 (AA591533, AA591534, AA591537 - AA591541, AA591557 - AA591565, AA591540)

Aus 222 [1260/2009]Insert starboard lateral light beacon, *Fl.G.3s*, with topmark 29° 24'.215 S 153° 20'.660 Eport lateral cylindrical light buoy, *VQ.R*, without topmark 29° 24'.040 S 153° 20'.512 E

starboard lateral beacon, with topmark 29° 23'.945 S 153° 20'.580 E

starboard lateral light beacon, *Iso.G.2s*, with topmark 29° 23'.877 S 153° 20'.552 Estarboard lateral light beacon, *Iso.G.2s*, with topmark 29° 23'.654 S 153° 20'.391 Eport lateral cylindrical light buoy, *VQ.R*, without topmark 29° 23'.512 S 153° 20'.106 EAmend light beacon to *Oc.G.3s 6M* 29° 25'.52 S 153° 22'.35 Elight beacon to *Oc.R.3s 6M* 29° 25'.71 S 153° 22'.27 Elight beacon to *VQ.G* 29° 24'.00 S 153° 20'.61 Elight beacon to *Oc.Bu.4s & Fl.G.2s* 29° 23'.35 S 153° 20'.06 Elight beacon to *F.Bu* 29° 23'.27 S 153° 20'.00 ESubstitute starboard lateral conical light buoy, *VQ.G*, without topmark for light beacon 29° 23'.46 S 153° 20'.14 E

Delete beacon 29° 24'.23 S 153° 20'.66 E

beacon 29° 24'.19 S 153° 20'.66 E

buoy 29° 23'.99 S 153° 20'.42 E

beacon 29° 23'.87 S 153° 20'.55 E

beacon 29° 23'.65 S 153° 20'.39 E

topmark 29° 23'.54 S 153° 20'.27 E

Aus 812 [955/2011]Amend light to *Oc.G.3s* 29° 25'.5 S 153° 22'.4 Elight to *Oc.R.3s* 29° 25'.7 S 153° 22'.3 E**Aus 813 [955/2011]**Amend light to *Oc.G.3s* 29° 25'.5 S 153° 22'.4 Elight to *Oc.R.3s* 29° 25'.7 S 153° 22'.3 E

375* AUSTRALIA - QUEENSLAND - Point Danger to Point Lookout - Light buoys*Former Notice - 111(T)/2012 is cancelled*

Maritime Safety Queensland Notice 336(T)/2012 (AA593495)

Aus 230 [85/2011]

Insert	special spherical light buoy, <i>Fl(5)Y.20s</i> , without topmark	27° 57'.95 S	153° 26'.57 E
--------	---	--------------	---------------

Aus 813 [374/2012]

Insert	special spherical light buoy, <i>Fl(5)Y.20s</i> , without topmark	28° 10'.89 S	153° 34'.48 E
--------	---	--------------	---------------

Aus 814 [1059/2011]

Insert	special spherical light buoy, <i>Fl(5)Y.20s</i> , without topmark	28° 10'.89 S	153° 34'.48 E
	special spherical light buoy, <i>Fl(5)Y.20s</i> , without topmark	27° 57'.95 S	153° 26'.57 E
	special spherical light buoy, <i>Fl(5)Y.20s</i> , without topmark	27° 29'.38 S	153° 37'.90 E

376* AUSTRALIA - QUEENSLAND - Moreton Bay - North Banks - Light buoys*Former Notice - 373(T)/2011 is cancelled*

Maritime Safety Queensland Notice 336(T)/2012 (AA593495)

Aus 235 [956/2011]

Insert	special spherical light buoy, <i>Fl(5)Y.20s</i> , without topmark	27° 00'.93 S	153° 15'.38 E
	special spherical light buoy, <i>Fl(5)Y.20s</i> , without topmark	26° 54'.01 S	153° 16'.91 E

Aus 236 [180/2012]

Insert	special spherical light buoy, <i>Fl(5)Y.20s</i> , without topmark	27° 00'.93 S	153° 15'.38 E
--------	---	--------------	---------------

Aus 815 [956/2011]

Insert	special spherical light buoy, <i>Fl(5)Y.20s</i> , without topmark	26° 54'.01 S	153° 16'.91 E
--------	---	--------------	---------------

377* AUSTRALIA - QUEENSLAND - Gneering Shoals - Foul ground*Former Notice - 918(T)/2011 is cancelled*

Maritime Safety Queensland (AA591457)

Aus 235 [376/2012]

Insert	#, centred on	26° 39'.56 S	153° 16'.53 E
--------	---------------	--------------	---------------

Aus 815 [376/2012]

Insert	#, centred on	26° 39'.56 S	153° 16'.53 E
--------	---------------	--------------	---------------

378* AUSTRALIA - QUEENSLAND - Point Arkwright - Light buoy*Former Notice - 201(T)/2012 is cancelled*

Maritime Safety Queensland Notice 336(T)/2012 (AA593495)

Aus 815 [377/2012]

Insert	special spherical light buoy, <i>Fl(5)Y.20s</i> , without topmark	26° 33'.96 S	153° 10'.92 E
--------	---	--------------	---------------

379* AUSTRALIA - QUEENSLAND - Gladstone - South Channel - Light buoy*Former Notice - 202(T)/2012 is cancelled*

Maritime Safety Queensland Notice 336(T)/2012 (AA593495)

Aus 246 [181/2012]

Insert	special spherical light buoy, <i>Fl(5)Y.20s</i> , without topmark	23° 53'.73 S	151° 30'.17 E
--------	---	--------------	---------------

380* AUSTRALIA - QUEENSLAND - Lisa Jane Shoals - Light buoy*Former Notice - 113(T)/2011 is cancelled*

Maritime Safety Queensland Notice 336(T)/2012 (AA593495)

Aus 247 [91/2012]

Insert	special spherical light buoy, <i>Fl(5)Y.20s</i> , without topmark	23° 18'.36 S	151° 04'.32 E
--------	---	--------------	---------------

Delete	depth, 17 ₄ m	23° 18'.4 S	151° 04'.5 E
--------	--------------------------	-------------	--------------

Aus 819 [91/2012]

Insert	special spherical light buoy, <i>Fl(5)Y.20s</i> , without topmark	23° 18'.36 S	151° 04'.32 E
--------	---	--------------	---------------

Aus 820 [91/2012]

Insert	special spherical light buoy, <i>Fl(5)Y.20s</i> , without topmark	23° 18'.36 S	151° 04'.32 E
--------	---	--------------	---------------

AX 00820S [NE 9/2/2012]

Insert	special spherical light buoy, <i>Fl(5)Y.20s</i> , without topmark	23° 18'.36 S	151° 04'.32 E
--------	---	--------------	---------------

381* AUSTRALIA - QUEENSLAND - Hay Point to Bailey Islet - Light buoys*Former Notice - 1275(T)/2011 is cancelled*

Maritime Safety Queensland Notice 336(T)/2012 (AA593495)

Aus 249 [632/2011]

Insert	special spherical light buoy, <i>Fl(5)Y.20s</i> , without topmark	21° 16'.28 S	149° 18'.56 E
--------	---	--------------	---------------

	special spherical light buoy, <i>Fl(5)Y.20s</i> , without topmark	21° 02'.36 S	149° 32'.70 E
--	---	--------------	---------------

Delete	depth, 27 ₇ m	21° 02'.3 S	149° 32'.7 E
--------	--------------------------	-------------	--------------

Aus 250 (plan, Hay Point) [1161/2010]

Insert	special spherical light buoy, <i>Fl(5)Y.20s</i> , without topmark	21° 16'.275 S	149° 18'.560 E
--------	---	---------------	----------------

Aus 251 [633/2011]

Insert	special spherical light buoy, <i>Fl(5)Y.20s</i> , without topmark	21° 02'.36 S	149° 32'.70 E
--------	---	--------------	---------------

Delete	depth, 27 ₇ m	21° 02'.3 S	149° 32'.7 E
--------	--------------------------	-------------	--------------

AX 00249S [NE 9/2/2012]

Insert	special spherical light buoy, <i>Fl(5)Y.20s</i> , without topmark	21° 16'.28 S	149° 18'.56 E
--------	---	--------------	---------------

	special spherical light buoy, <i>Fl(5)Y.20s</i> , without topmark	21° 02'.36 S	149° 32'.70 E
--	---	--------------	---------------

Delete	depth, 27 ₇ m	21° 02'.3 S	149° 32'.7 E
--------	--------------------------	-------------	--------------

382* AUSTRALIA - QUEENSLAND - Mackay - Pilot boarding place

Maritime Safety Queensland Notice 298/2012 (AA591585)

Aus 249 [381/2012]

Move	pilot boarding place	21° 07'.0 S	149° 16'.0 E
	to	21° 07'.03 S	149° 17'.14 E

Aus 250 (plan, Mackay Harbour) [381/2012]

Delete	pilot boarding place	21° 07'.0 S	149° 16'.0 E
--------	----------------------	-------------	--------------

AX 00249S [381/2012]

Move	pilot boarding place	21° 07'.0 S	149° 16'.0 E
	to	21° 07'.03 S	149° 17'.14 E

383* AUSTRALIA - QUEENSLAND - Cape Cleveland - Light buoy*Former Notice - 1395(T)/2010 is cancelled*

Maritime Safety Queensland Notice 336(T)/2012 (AA593495)

Aus 256 [224/2012]

Insert	special spherical light buoy, <i>Fl(5)Y.20s</i> , without topmark	19° 09'.583 S	147° 03'.457 E
--------	---	---------------	----------------

Aus 827 [225/2012]

Insert	special spherical light buoy, <i>Fl(5)Y.20s</i> , without topmark	19° 09'.58 S	147° 03'.46 E
--------	---	--------------	---------------

Delete	depth, 14 _m	19° 09'.3 S	147° 03'.6 E
--------	------------------------	-------------	--------------

384* AUSTRALIA - QUEENSLAND - Double Island - Light buoy*Former Notice - 971(T)/2010 is cancelled*

Maritime Safety Queensland Notice 336(T)/2012 (AA593495)

Aus 830 [187/2012]

Insert	special spherical light buoy, <i>Fl(5)Y.20s</i> , without topmark	16° 44'.06 S	145° 42'.60 E
--------	---	--------------	---------------

AX 6027S [29/2012]

Insert	special spherical light buoy, <i>Fl(5)Y.20s</i> , without topmark	16° 44'.06 S	145° 42'.60 E
--------	---	--------------	---------------

385* AUSTRALIA - QUEENSLAND - Port Douglas - Depths

Maritime Safety Queensland (DHDB 1634639)

Aus 270 (plan, Port Douglas) [1120/2011]

Insert	accompanying block	16° 28'.8 S	145° 27'.8 E
--------	--------------------	-------------	--------------

386* PAPUA NEW GUINEA - Garove Island - Cape Lama - DepthMV *Oceanic Discoverer* (AA591802 - AA591805)**Aus 678** [NE 8/10/2010]

Insert	depth, 2 _m , enclosed by contour	4° 43'.191 S	149° 31'.943 E
--------	---	--------------	----------------

387* AUSTRALIA - TORRES STRAIT - Cook Reef - Contours
Australian Maritime Safety Authority (AA593897)

Aus 700 [323/2012]

Insert accompanying block 10° 26'.0 S 141° 32'.0 E

388* AUSTRALIA - QUEENSLAND - Albatross Bay - Light buoy

Former Notice - 662(T)/2011 is cancelled
Maritime Safety Queensland Notice 336(T)/2012 (AA593495)

Aus 4 [285/2012]

Insert special spherical light buoy, *Fl(5)Y.20s*, without topmark 12° 41'.29 S 141° 41'.07 E

Aus 701 [286/2012]

Insert special spherical light buoy, *Fl(5)Y.20s*, without topmark 12° 41'.29 S 141° 41'.07 E

389* AUSTRALIA - NORTHERN TERRITORY - Melville Island - Legends

Australian Hydrographic Service (AA591148)

Aus 309 [140/2012]

Delete legend, Adjoining Chart Aus 308, in E border 11° 37'.0 S 131° 07'.9 E

Aus 310 [906/2010]

Delete legend, Adjoining Chart Aus 308, in E border 10° 47'.0 S 130° 53'.8 E

AX 0309F [140/2012]

Delete legend, Adjoining Chart Aus 308, in E border 11° 37'.0 S 131° 07'.9 E

AX 0310F [906/2010]

Delete legend, Adjoining Chart Aus 308, in E border 10° 47'.0 S 130° 53'.8 E

AX 72309 [140/2012]

Delete legend, Adjoining Chart Aus 308, in E border 11° 37'.0 S 131° 07'.9 E

390* EAST TIMOR - Beaso - Drying heights

Australian Hydrographic Service (AA593007)

Aus 903 (plan, Beaso) [851/2005]

Delete	drying height, <u>2</u> m	8° 56'.96 S	126° 26'.60 E
	drying height, <u>3</u> m	8° 56'.99 S	126° 27'.06 E
	drying height, <u>2</u> m	8° 57'.18 S	126° 27'.23 E
	drying height, <u>3</u> m	8° 57'.10 S	126° 27'.58 E
	drying height, <u>3</u> m	8° 56'.99 S	126° 27'.95 E
	drying height, <u>3</u> m	8° 56'.95 S	126° 28'.21 E

391* EAST TIMOR - Suai - ZOC diagram

Australian Hydrographic Service (AA593006)

Aus 905 [851/2005]

Amend	magenta legend to <i>C</i>	9° 15'.38 S	125° 17'.23 E
	magenta legend to <i>D</i>	9° 15'.85 S	125° 17'.57 E
	magenta legend to <i>D</i>	9° 16'.48 S	125° 17'.50 E
	magenta legend to <i>D</i>	9° 16'.26 S	125° 17'.03 E

392* AUSTRALIA - WESTERN AUSTRALIA - Wyndham - Middle Ground - Light buoys
Department of Transport WA (AA593367, AA593368)

Aus 32 (plan, Approaches to Wyndham Wharf) [1185/2011]

Insert	depth, 7 ₄ m	15° 18'.199 S	128° 05'.858 E
Move	light buoy	15° 18'.27 S	128° 05'.77 E
	to	15° 18'.447 S	128° 05'.730 E
Delete	light buoy	15° 18'.15 S	128° 05'.90 E
	depth, 6 ₉ m	15° 18'.36 S	128° 05'.73 E

393* AUSTRALIA - SOUTH AUSTRALIA - Saint Mary Bay - Depths

Australian Hydrographic Service (AA589912)

Aus 121 (plan, Streaky Bay) [236/2012]

Insert	accompanying block	32° 30'.0 S	133° 51'.0 E
--------	--------------------	-------------	--------------

394* AUSTRALIA - SOUTH AUSTRALIA - Thistle Island - Restricted area

UKHO (AA592781, AA592782)

Aus 485 [NE 23/3/2012]

Insert	accompanying block	35° 00'.0 S	136° 05'.0 E
--------	--------------------	-------------	--------------

395* AUSTRALIA - VICTORIA - Port Phillip - Martha Point to Rye - Nav aids

Victorian Notices 72/2012, 73/2012 (AA591472, AA591746, AA593019)

Aus 143 [292/2012]

Insert	accompanying block	38° 20'.0 S	144° 53'.0 E
--------	--------------------	-------------	--------------

Aus 158 [292/2012]

Insert	accompanying block A	38° 21'.0 S	144° 51'.0 E
	accompanying block B	38° 18'.5 S	144° 59'.0 E
	special beacon, with topmark	38° 20'.477 S	144° 55'.862 E
	special beacon, with topmark	38° 20'.539 S	144° 55'.678 E

396* AUSTRALIA - VICTORIA - Lakes Entrance - North Arm - Nav aids

Victorian Notice 71/2012 (AA591461)

Aus 182 (plan, Lakes Entrance) [238/2012]

Insert	light beacon, F.I.G.3s	37° 53'.015 S	147° 58'.079 E
	pile	37° 53'.012 S	147° 58'.092 E
	pile	37° 53'.009 S	147° 58'.105 E
	pile	37° 53'.006 S	147° 58'.118 E

397(T)/2012 AUSTRALIA - QUEENSLAND - Moreton Bay - Ship to ship transfer

Former Notice - 152(T)/2012 is cancelled

Date - Until 25 June 2012

Maritime Safety Queensland Notice 387(T)/2012 (AA594978)

Ship to ship transfer of LPG will be conducted at STS1 anchorage (27° 17'.25 S 153° 16'.56 E). An exclusion zone (1850 metres radius) exists around transfer operations.

Chart temporarily affected - Aus 236**398(T)/2012 AUSTRALIA - QUEENSLAND - Moreton Bay - St Helena Island - Wreck**

Maritime Safety Queensland Notice 374(T)/2012 (AA594589)

A wreck marked by a special light buoy, Q.Y, exists in position 27° 22'.88 S 153° 14'.56 E.

Mariners are advised to navigate with caution in the area.

Chart temporarily affected - Aus 236**399(T)/2012 AUSTRALIA - QUEENSLAND - Brisbane River - Outer Bar Reach - Light buoy off station**

Former Notice - 812(T)/2011 is cancelled

Maritime Safety Queensland (AA594644)

No20 port lateral light buoy, *Fl.R.4s* (27° 21'.32 S 153° 10'.75 E), is off station due to dredging operations.

Chart temporarily affected - Aus 237**400(T)/2012 AUSTRALIA - QUEENSLAND - Mooloolaba - Shoaling; dredging operations**

Former Notices - 200(T)/2012, 346(T)/2012 are cancelled

Maritime Safety Queensland Notices 330(T)/2012, 371(T)/2012 (AA593476, AA594411)

Shoaling with a least depth of *0.8m* exists within the main channel to Mooloolah River, between positions 26° 40'.74 S 153° 07'.95 E and 26° 40'.74 S 153° 07'.83 E.

A least depth of *2.6m* exists between positions 26° 40'.74 S 153° 07'.83 E and 26° 40'.81 S 153° 07'.93 E. A port lateral light buoy, *Q.R*, exists in position 26° 40'.80 S 153° 07'.85 E and marks the western edge of the shoal.

The leading lights (26° 40'.97 S 153° 08'.17 E and 26° 40'.93 S 153° 08'.14 E) are temporarily unlit.

The dredges *Port Frederick* and *Saibai* and support vessels *Bula* and *Sigma* are conducting dredging operations in Mooloolah River. A floating pipeline exists from the dredge *Saibai* to the western breakwater.

The dredges will display appropriate lights and shapes and will monitor VHF Ch 12, 16 and 73.

Mariners are advised to navigate with caution in the area.

Chart temporarily affected - Aus 235

401(T)/2012 AUSTRALIA - QUEENSLAND - Gladstone - Fishermans Landing - Harbour works

Date - Until 1 May 2012

Maritime Safety Queensland Notice 366(T)/2012 (AA594414)

Piling operations are in progress between berth No2 (23° 47'.42 S 151° 10'.80 E) and No4 (23° 47'.25 S 151° 10'.57 E).

The piling barge *Leonora* is onsite and has deployed anchors in the following positions:

23° 47'.28 S 151° 10'.74 E
 23° 47'.40 S 151° 10'.62 E
 23° 47'.28 S 151° 10'.68 E
 23° 47'.34 S 151° 10'.62 E
 23° 47'.34 S 151° 10'.74 E
 23° 47'.40 S 151° 10'.68 E.

The barge will display the appropriate lights and shapes and will monitor VHF Ch 13 and Ch 15.

Mariners are advised to navigate with caution in the area.

Chart temporarily affected - Aus 244 - Aus 245**402(T)/2012 AUSTRALIA - QUEENSLAND - Gladstone - Hamilton Point to Friend Point - Nav aids**

Former Notices - 702(T)/2011, 1272(T)/2011 are cancelled

Maritime Safety Queensland Notices 609(T)/2011, 357(T)/2012 (AA543879, AA594205)

Port and starboard lateral light buoys exist as follows:

<i>Number</i>	<i>Position</i>	<i>Characteristic</i>
PIC1	23° 47'.28 S 151° 12'.25 E	Fl.G.2.5s
PIC2	23° 47'.59 S 151° 12'.41 E	Fl.R.2.5s
PIC3	23° 47'.16 S 151° 12'.11 E	Fl.G.2.5s
PIC4	23° 47'.37 S 151° 12'.18 E	Fl.R.2.5s
PIC5	23° 46'.95 S 151° 11'.98 E	Fl.G.2.5s
PIC6	23° 47'.11 S 151° 11'.85 E	Fl.R.2.5s
PIC7	23° 46'.85 S 151° 11'.79 E	Fl.Y.2.5s
PIC8	23° 46'.86 S 151° 11'.53 E	Fl.R.2.5s
PIC9	23° 46'.76 S 151° 11'.64 E	Fl.G.2.5s
PIC10	23° 46'.61 S 151° 11'.25 E	Fl.R.2.5s
PIC11	23° 46'.52 S 151° 11'.42 E	Fl.G.2.5s
PIC12	23° 46'.28 S 151° 11'.06 E	Fl.R.2.5s
PIC13	23° 46'.21 S 151° 11'.19 E	Fl.G.2.5s
PIC14	23° 46'.05 S 151° 10'.91 E	Fl.R.2.5s
PIC15	23° 45'.95 S 151° 11'.11 E	Fl.G.2.5s
PIC16	23° 45'.73 S 151° 10'.69 E	Fl.R.2.5s
PIC17	23° 45'.68 S 151° 10'.91 E	Fl.G.2.5s
PIC18	23° 45'.44 S 151° 10'.50 E	Fl.R.2.5s
PIC19	23° 45'.40 S 151° 10'.65 E	Fl.Y.2.5s
PIC20	23° 45'.09 S 151° 10'.29 E	Fl.Y.2.5s
PIC21	23° 45'.18 S 151° 10'.49 E	Fl.G.2.5s.

Light beacons exist as follows:

<i>Position</i>	<i>Remarks</i>
23° 45'.50 S 151° 10'.31 E	special light beacon, Fl.Y.4s
23° 45'.42 S 151° 10'.45 E	special light beacon, Fl.Y.4s
23° 45'.34 S 151° 10'.41 E	port lateral light beacon, Fl.R.4s.

Chart temporarily affected - Aus 245

403(T)/2012 AUSTRALIA - QUEENSLAND - Hay Point - Scientific instrument recovered

Former Notice - 117(T)/2012 is cancelled
Maritime Safety Queensland Notice 345/2012 (AA593751)

Cancel this notice on receipt.

Chart formerly affected - Aus 250**404(T)/2012 AUSTRALIA - QUEENSLAND - Fitzalan Passage - Light buoy off station**

Maritime Safety Queensland Notice 353(T)/2012 (AA594029)

The special light buoy, *Fl.Y.2-5s* (20° 18'.78 S 148° 56'.05 E), is off station.

Chart temporarily affected - Aus 252 - Aus 253**405(T)/2012 AUSTRALIA - QUEENSLAND - Bowen - Light buoy re-established**

Former Notice - 267(T)/2011 is cancelled
Maritime Safety Queensland Notice 345/2012 (AA593751)

Cancel this notice on receipt.

Chart formerly affected - Aus 268**406(T)/2012 AUSTRALIA - QUEENSLAND - Cape Bowling Green - Light buoy off station**

Maritime Safety Queensland Notice 375(T)/2012 (AA594582)

The isolated danger light buoy, *Fl(2)5s* (19° 18'.10 S 147° 37'.03 E), is off station.

Chart temporarily affected - Aus 826 - Aus 827**407(T)/2012 AUSTRALIA - QUEENSLAND - Magnetic Island - Nobby Head - Wreck**

Maritime Safety Queensland Notice 381(T)/2012 (AA594593)

A stranded wreck marked by a special light buoy, *Q.Y.*, exists in position 19° 10'.85 S 146° 48'.83 E.

Mariners are advised to navigate with caution in the area.

Chart temporarily affected - Aus 256 - Aus 827**408(T)/2012 AUSTRALIA - QUEENSLAND - Mourilyan Harbour - Harbour works completed**

Former Notice - 135(T)/2010 is cancelled
Maritime Safety Queensland Notice 345/2012 (AA593751)

Cancel this notice on receipt.

Chart formerly affected - Aus 258

409(T)/2012 AUSTRALIA - QUEENSLAND - Cairns - Depth information*Former Notice - 158(T)/2012 is cancelled*

Maritime Safety Queensland Notice 361(T)/2012 (AA594342)

Available depths as of 17 April 2012:

	<i>Metres</i>	<i>Remarks</i>
* Entrance Channel	8.1	
Crystal Swing Basin at:		
360 metre diameter	6.8	
380 metre diameter	6.4	
Swing Basin at:		
310 metre diameter	8.7	
320 metre diameter	7.8	
Marlin Marina	3.3	
Berths:		
No 1	8.4	
No 2	8.5	
No 3	8.4	
No 4	8.4	
No 5	8.2	
No 6	8.1	between 500 metres and 550 metres
No 6	7.7	between 550 metres and 600 metres
No 7	9.9	
No 8	10.0	
No 10	9.3	
No 12	10.5	
Smiths Creek 1	4.7	

* Indicates revised entry.

Chart temporarily affected - Aus 262 - Aus 263 - Aus 264 - Aus 830**410(T)/2012 AUSTRALIA - QUEENSLAND - Cairns - Light beacon restored***Former Notice - 378(T)/2011 is cancelled*

Maritime Safety Queensland Notice 345/2012 (AA593751)

Cancel this notice on receipt.

Chart formerly affected - Aus 262 - AX 63262**411(T)/2012 AUSTRALIA - QUEENSLAND - Cairns - Marlin Marina - Harbour works completed***Former Notice - 1037(T)/2011 is cancelled*

Maritime Safety Queensland Notice 345/2012 (AA593751)

Cancel this notice on receipt.

Chart formerly affected - Aus 262 - Aus 263 - AX 63262**412(T)/2012 AUSTRALIA - QUEENSLAND - Cooktown - Depth information***Former Notice - 929(T)/2010 is cancelled*

Maritime Safety Queensland Notice 349(T)/2012 (AA593743)

Available depths as at 12 April 2012:

	<i>Metres</i>
* Entrance Channel	1.5
* Inner Channel	2.4
* Public Wharf	2.8
* Swing Basin	1.4

* Indicates new or revised entry.

Chart temporarily affected - Aus 270

20 April 2012

413(T)/2012 PAPUA NEW GUINEA - Tavanatangir Harbour - Lights unlit
National Maritime Safety Authority PNG Notices 13/2012, 14/2012, 15/2012 (AA594118)

The following light beacons are unlit:

<i>Position</i>	<i>Remarks</i>
4° 48'.14 S 151° 41'.33 E	No4, <i>Fl(3)G.12s 5m 4M</i>
4° 48'.58 S 151° 40'.88 E	No3, <i>Fl(4)G.16s 4m 4M</i>
4° 49'.06 S 151° 40'.40 E	No1, <i>Fl(2)G.8s 5m 3M.</i>

Chart temporarily affected - Aus 672

414(T)/2012 AUSTRALIA - QUEENSLAND - Karumba - Light beacon withdrawn

Former Notice - 123(T)/2012 is cancelled
Maritime Safety Queensland Notices 362(T)/2012 (AA594401)

No 3 light beacon (17° 25'.86 S 140° 43'.66 E) has been withdrawn; a starboard lateral light buoy, *Fl.G.4s*, exists in situ.

Chart temporarily affected - Aus 6

415(T)/2012 AUSTRALIA - WESTERN AUSTRALIA - Scott Reef - Seismic survey southeastwards

Former Notice - 259(T)/2012 is cancelled
Date - Until 13 June 2012
Petroleum Geo-Services (AA594642, AA594643)

MV *Ramform Explorer*, towing ten 6000m cables, and support vessel MV *Nautika Pride* and MV *No Limit* are conducting a survey in the areas bounded by the following positions:

14° 24'.92 S 122° 27'.10 E
14° 14'.35 S 122° 45'.77 E
14° 54'.92 S 122° 45'.08 E
15° 00'.03 S 122° 40'.38 E
15° 00'.32 S 122° 27'.10 E.

Chart temporarily affected - Aus 320 - Aus 322 - AX 0322F

416(T)/2012 AUSTRALIA - WESTERN AUSTRALIA - Rowley Shoals - Seismic survey

Date - Until 17 May 2012
Fugro (AA594522, AA594523, AA594524)

MV *Geo Atlantic* and support vessel *Cassandra 6* are conducting a survey in the area bounded by the following positions:

17° 59'.92 S 118° 44'.65 E
17° 59'.92 S 119° 30'.08 E
18° 09'.92 S 119° 30'.08 E
18° 09'.93 S 119° 45'.07 E
18° 22'.42 S 119° 45'.08 E
18° 22'.43 S 119° 28'.39 E
18° 25'.49 S 119° 25'.09 E
18° 25'.55 S 119° 04'.17 E
18° 21'.10 S 119° 04'.12 E
18° 21'.15 S 118° 40'.08 E
18° 09'.93 S 118° 40'.08 E
18° 09'.93 S 118° 44'.65 E.

Chart temporarily affected - Aus 325 - Aus 326

417(T)/2012 AUSTRALIA - WESTERN AUSTRALIA - North West Cape - Drill rig northwestwards

Former Notice - 264(T)/2012 is cancelled

Date - Until 4 May 2012

Australian Maritime Safety Authority Aus coast Warning 96/2012 (AA593958), MODU *Ocean America* (AA594071)

Drill rig *Ocean America* is conducting drilling operations in position 21° 10'.40 S 113° 07'.43 E.

Chart temporarily affected - Aus 329 - Aus 4723 (INT 723) - Aus 4725 (INT 725) - AX 4723F

418(T)/2012 AUSTRALIA - WESTERN AUSTRALIA - Esperance - Depth information

Former Notice - 337(T)/2010 is cancelled

Esperance Ports Sea and Land Notice 3/2012 (AA593980)

Available depths as of 11 April 2012:

<i>Location</i>	<i>Metres</i>
* Berth No 1	13.0
* Berth No 2	13.0
* Berth No 3	17.6
Swing Basin	12.9/14.5
Entrance Channel	18.5

Mariners are advised to navigate with caution in the area.

Chart temporarily affected - Aus 119

419(T)/2012 AUSTRALIA - TASMANIA - Southport to Norfolk Bay - Scientific instruments

Date - Until 16 October 2012

Marine and Safety Tasmania Notice 44/2012 (AA593987)

Scientific instruments marked by special conical buoys exist in the following positions:

43° 26'.29 S 147° 00'.33 E
 43° 17'.27 S 147° 08'.35 E
 43° 19'.62 S 147° 09'.90 E
 43° 19'.28 S 147° 12'.98 E
 43° 15'.30 S 147° 17'.26 E
 42° 54'.00 S 147° 44'.49 E.

Chart temporarily affected - Aus 171 - Aus 173 - Aus 174 - Aus 795 - Aus 796

420(T)/2012 AUSTRALIA - VICTORIA - Port Phillip - Coles Channel - Diving operations

Date - Until 18 May 2012

Victorian Notice 79(T)/2012 (AA594035)

Diving operations are in progress in position 38° 12'.15 S 144° 43'.40 E.

A barge is onsite and will display appropriate shapes.

Mariners are advised to navigate with caution in the area.

Chart temporarily affected - Aus 143 - Aus 157 - Aus 158

II

HYDROGRAPHIC REPORTS

Nil Reports

NAVIGATION WARNINGS

The following radio messages have been received during the period to 20 April 2012. Signal copies of these messages may be destroyed. It is recommended that the reprint of Navigational Warnings should be kept in a file or a book divided into areas. Cancellation should be made on receipt of signals and reprints.

Rigs on location other than those listed in the latest Section III summary are the subject of Radio Navigational Warnings. Rigs in transit will not be the subject of Warnings.

AUSCOAST WARNING

- 090 Cancelled.
 091 Cancelled.
 092 Submerged mooring established in position 20° 26'.06 S 116° 51'.01 E.
 093 Quetta Rock buoy AIS aid to navigation MMSI 995031040 10° 40'.25 S 142° 37'.50 E inoperative.
 094 Special purpose vessel *Southern Supporter* conducting survey towing sub sea equipment in two areas; area 1 bounded by 32° 10'.0 S to 32° 21'.0 S and 115° 15'.0 E to 115° 36'.0 E; area 2 bounded by 31° 48'.0 S to 31° 52'.0 S and 115° 23'.0 E to 115° 29'.0 E. 1M clearance requested.
 095 Cancelled.
 096 Drill rig *Ocean America* in position 21° 10'.40 S 113° 07'.43 E. 2.5M clearance requested.
 097 Schouten Reef light K3609.1 in position 42° 17'.60 S 148° 13'.79 E unlit.
 098 Drill rig *Ocean Patriot* in position 11° 56'.06 S 125° 00'.42 E. 2.5M clearance requested.
 099 Drill rig *Stena Clyde* in position 38° 58'.00 S 142° 53'.44 E. 2.5M clearance requested.
 100 Cancelled.
 101 Special purpose vessel *Geo Atlantic* conducting seismic survey in an area bounded by 18° 10'.0 S to 20° 25'.0 S and 111° 40'.0 E to 114° 55'.0 E. 6M clearance requested.
 102 Special purpose vessel *Outer Limit* conducting hydrographic survey towing sub sea equipment at distance 0.35M in an area bounded by 38° 57'.9 S to 39° 06'.5 S and 142° 53'.5 E to 142° 57'.1 E. 2M clearance requested.
 103 Special purpose vessel *Lorelay* conducting pipe laying operations in an area bounded by 19° 46'.0 S to 20° 48'.0 S and 114° 31'.0 E to 115° 26'.0 E. 1M clearance requested.
 104 Yongala historic wreck isolated danger mark in position 19° 18'.1 S 147° 37'.0 E missing.

NAVAREA X WARNINGS

- 010 Cautionary notification cancelled. Further information can be obtained from the Australian Customs and Border Protection notice 9/2012 or <http://www.customs.gov.au/webdata/resources/files/ACN201209.pdf>

Navigational warnings in force as at 200001UTC APR 12.**Auscoast**

2011 337 338

2012 072 076 077 078 080 082 086 092 093 094 096 097 098 099 101 102 103 104

Navarea X

2012 005 008 010

Summary of mobile drilling rigs as at 200001UTC APR 12.

Name	Position
Ocean Patriot	11° 56'.06 S 125° 00'.42 E
EnSCO 109	12° 40'.20 S 124° 32'.22 E
Transocean Legend	13° 39'.24 S 122° 17'.52 E
EnSCO 104	20° 36'.10 S 115° 36'.80 E
Atwood Osprey	20° 24'.51 S 114° 50'.98 E
Deepwater Frontier	19° 51'.00 S 114° 30'.00 E
Jack Bates	20° 04'.96 S 113° 49'.90 E
Atwood Eagle	20° 52'.50 S 113° 44'.55 E
Ocean America	21° 10'.40 S 113° 07'.43 E
Stena Clyde	38° 58'.00 S 142° 53'.44 E

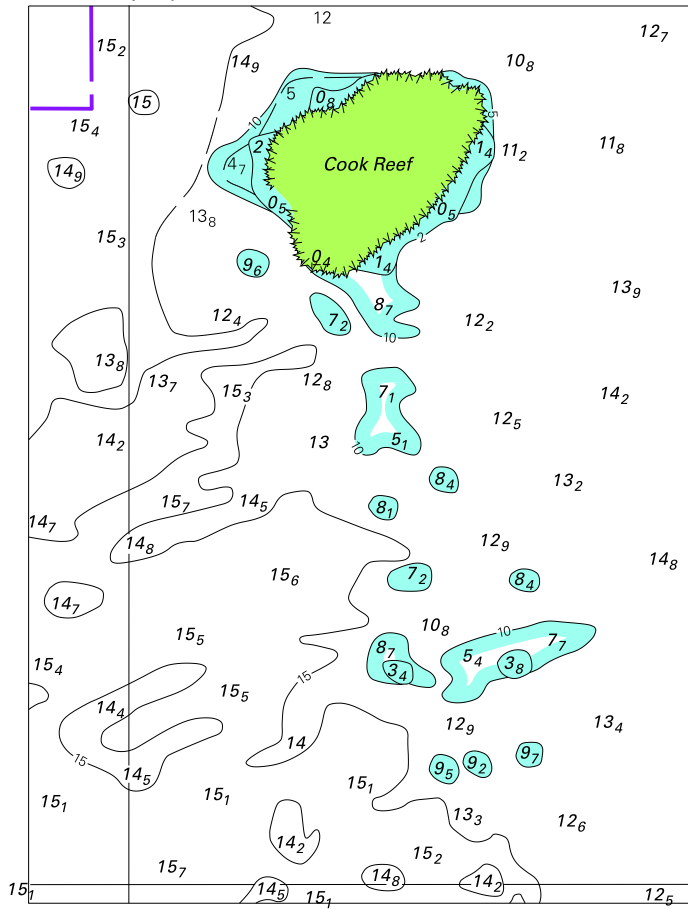
NAVAREA XIV WARNINGS

Nil.

Navarea XIV warnings in force as at 200001UTC APR 12.

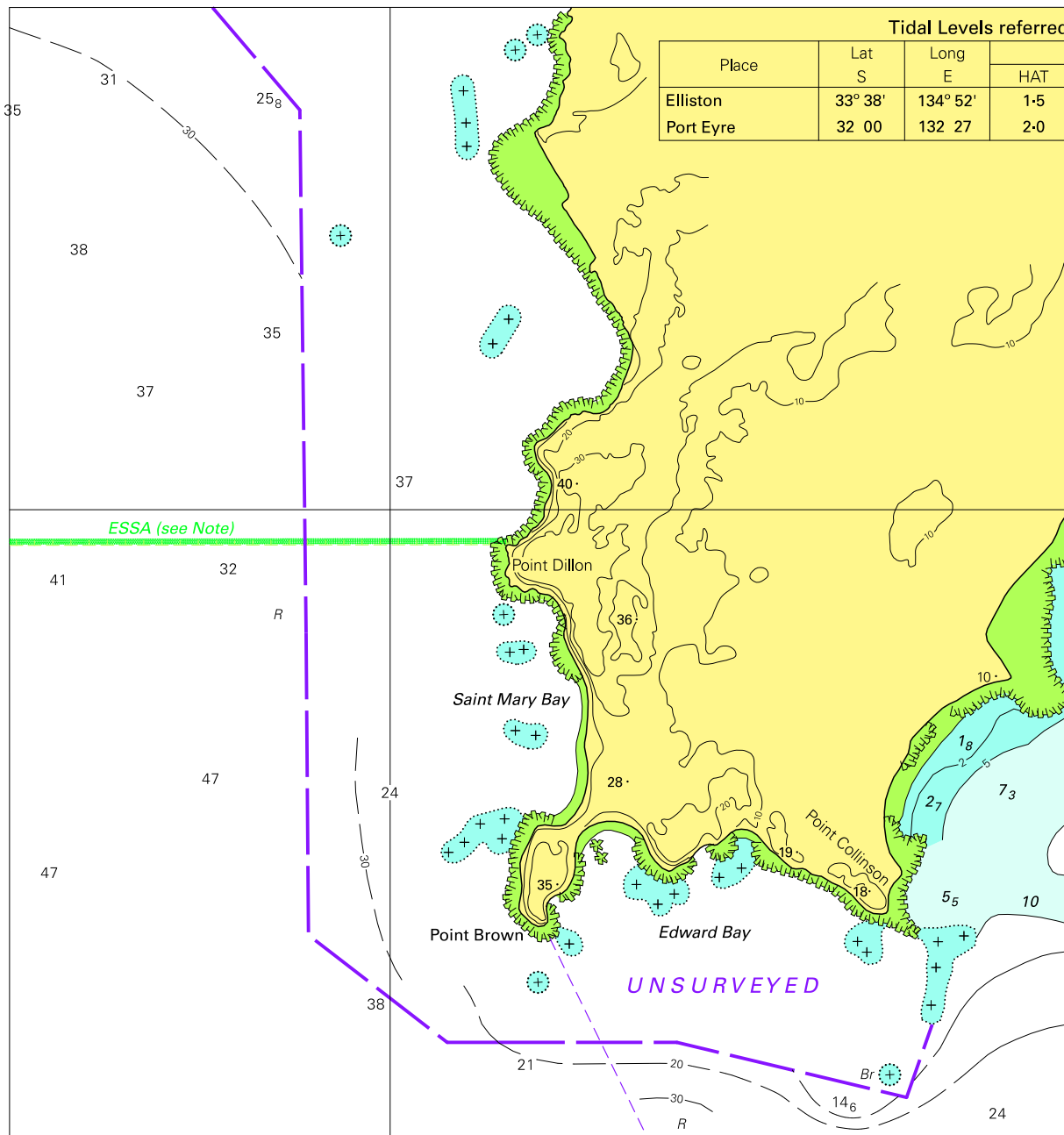
028

To accompany Australian Notice to Mariners 387/2012

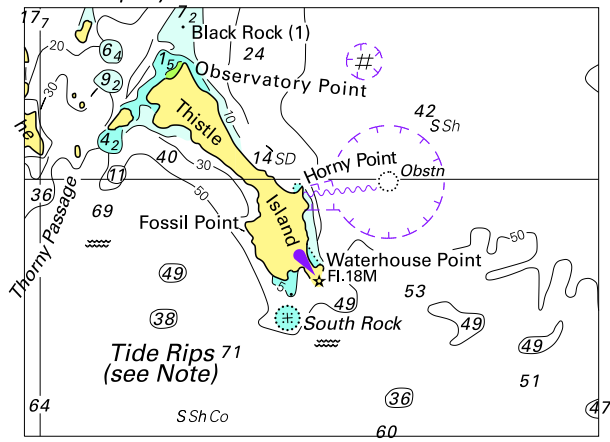


© Commonwealth of Australia 2012 (88-3 x 118-7mm)
Block for chart Aus 700

To accompany Australian Notice to Mariners 393/2012



To accompany Australian Notice to Mariners 394/2012

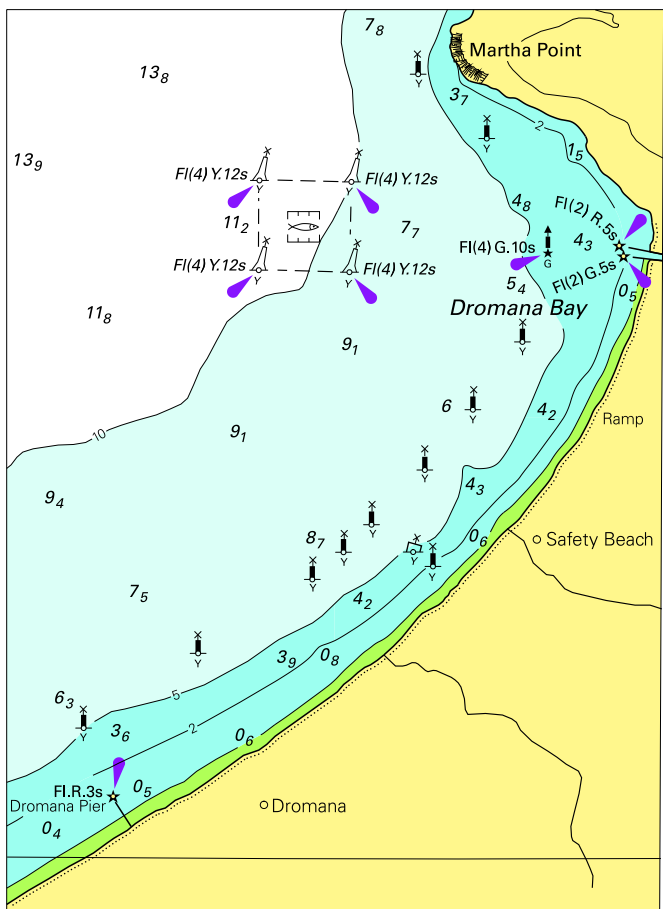


© Commonwealth of Australia 2012

Block for chart Aus 485

(76 x 56.7mm)

To accompany Australian Notice to Mariners 395/2012



© Commonwealth of Australia 2012 (86.4 x 119.4mm)
Block B for chart Aus 158