



10 February 2012

Edition 3

Australian Notices to Mariners are the authority for correcting Australian Charts and Publications

AUSTRALIAN NOTICES TO MARINERS

Notices 133 – 176

Published fortnightly by the Australian Hydrographic Service

Commodore R. NAIRN RAN
Hydrographer of Australia

SECTIONS.

- I. **Australian Notices to Mariners, including blocks and notes.**
- II. **Hydrographic Reports.**
- III. **Navigational Warnings.**

SUPPLEMENTS.

- I. **Tracings**
- II. **Cumulative List of Australian Notices to Mariners.**
- III. **Cumulative List of Temporary and Preliminary Australian Notices to Mariners.**
- IV. **Temporary and Preliminary Notices in force.**
- V. **Amendments to Admiralty List of Lights and Fog Signals (Vol K), Radio Signals (NP 281(2), 282, 283(2), 285, 286(4)) and Sailing Directions (NP 9, 13, 14, 15, 33, 34, 35, 36, 39, 44, 51, 60, 61, 62, 100, 136).**

© Commonwealth of Australia 2012

This work is copyright. Apart from any use permitted under the Copyright Act 1968, no part may be reproduced by any process, adapted, communicated or commercially exploited without prior written permission from The Commonwealth represented by the Australian Hydrographic Service.

IMPORTANT NOTICE

This edition of Notices to Mariners includes all significant information affecting AHS products which the AHS has become aware of since the last edition. All reasonable efforts have been made to ensure the accuracy and completeness of the information, including third party information, on which these updates are based. The AHS regards third parties from which it receives information as reliable, however the AHS cannot verify all such information and errors may therefore exist. The AHS does not accept liability for errors in third party information.

GENERAL INSTRUCTIONS

The substance of these notices should be inserted on the charts affected.

Bearings are referred to the true compass and are reckoned clockwise from North; those relating to lights are given as seen by an observer from seaward. Positions quoted in permanent notices relate to the horizontal datum for the chart(s). When preliminary or temporary notices affect multiple charts, positions will be provided in relation to only one horizontal datum and that datum will be specified. When the multiple charts do not have a common horizontal datum, mariners will be required to adjust the position(s) for those charts not on the specified datum. The range quoted for a light is its nominal range. Depths are with reference to the chart datum of each chart. Heights are above mean high water springs or mean higher high water, as appropriate.

The capital letter (P) or (T) after the number of any notice denotes a preliminary or temporary notice respectively, which are contained separately at the end of the permanent notices. A star (*) adjacent to the number of a notice indicates that the notice is based on original information.

REPORTING OF DANGERS

Mariners are particularly requested to notify the AUSTRALIAN HYDROGRAPHIC SERVICE, Locked Bag 8801 Wollongong, NSW 2500 (Fax 02-4223 6599, e-mail Hydro.NTM@defence.gov.au or, alternatively by filling in and submitting the [Hydrographic Notes](#) forms located on the web site – www.hydro.gov.au), immediately on the discovery of new dangers or suspected dangers to navigation. For changes or defects in aids to navigation notify AusSAR (Fax 02-6230 6868 or email rccaus@amsa.gov.au).

AUTHORISED USE

Copies of Australian notices are available free of charge from the Australian Hydrographic Service (AHS) website (www.hydro.gov.au) and through the eNotices (email) service (www.hydro.gov.au/enotices/enotices.htm).

Individual Notices may be copied for the purpose of inserting Notice substance on official charts and publications. Paper copies may be printed by chart agents and distributed to customers on a cost recovery basis. Participating chart agents are listed on the AHS website as providing a 'Paper Notices to Mariners' service (www.hydro.gov.au/prodserv/distributors/distributors.htm). Copies of the notices may not be sold for profit without prior written agreement.

NUMERICAL INDEX OF NOTICES TO MARINERS

Edition No 3

Notices	Aus Chart, INT Chart, AHP
133.....	Aus 840, 208, AX 00110S, 00118S, 00260S, 00334S, 00343S, 00367S, 00754S, 00755S, 00776S, 00808S, 00809S, 00822S, 00823S
134.....	Amendment to Australian National Tide Tables 2012
135.....	Aus 263, 264
136.....	Aus 831
137.....	Aus 833
138.....	Aus 292, 376, 839
139.....	Aus 4720, 4721, INT 720, 721, AX 4720F, 4721F
140.....	Aus 26, 309, 722, AX 0309F, 72026, 72309, 72722
141.....	Aus 24, 26, AX 72026
142.....	Aus 323
143.....	Aus 55
144.....	Aus 743
145.....	Aus 72
146.....	Aus 109
147.....	Aus 341, 342
148.....	Aus 158
149.....	Aus 609, 4060, 4602, INT 60, 602
150(T).....	Aus 193, 807, 808, AX 00808S, 60193, 70193
151(T).....	Aus 235, 236, 237, 238, 814, 815
152(T).....	Aus 236
153(T).....	Aus 236
154(T).....	Aus 235
155(T).....	Aus 244, 245
156(T).....	Aus 255
157(T).....	Aus 257
158(T).....	Aus 262, 263, 264, 830
159(T).....	Aus 293, 299
160(T).....	Aus 306, AX 0306F
161(T).....	Aus 315
162(T).....	Aus 315
163(T).....	Aus 315, AX 0315F
164(T).....	Aus 58
165(T).....	Aus 327
166(T).....	Aus 343, 346, 4727, 4728, INT 727, 728, AX 00343S
167(T).....	Aus 349, 787
168(T).....	Aus 173, 795
169(T).....	Aus 167
170(T).....	Aus 167
171(T).....	Aus 144, 158
172(T).....	Aus 143, 144, 158
173(T).....	Aus 154
174(T).....	Aus 181
175(T).....	Aus 4601, INT 601
176(T).....	Aus 4621, INT 621, AX 4621F

133 AUSTRALIA - Product

Australian Hydrographic Service (AA580946)

New Chart to be published shortly

<i>Chart</i>	<i>Title</i>	<i>Scale</i>	<i>Expected Publication Date</i>
Aus 840	Torres Strait - Great North East Channel - Arden Islet to East Cay	1 : 150 000	24 February 2012

New Edition to be published shortly

<i>Chart</i>	<i>Title</i>	<i>Scale</i>	<i>Expected Publication Date</i>
Aus 208	Australia - East Coast - New South Wales - Newcastle Inset: Hunter River (South Arm)	1:7 500 1:10 000	24 February 2012
Aus 837	Australia - East Coast - Queensland - Olinda Entrance to Meer Island	1 : 150 000	24 February 2012

New Miscellaneous Edition

<i>Chart</i>	<i>Published</i>	<i>Title</i>	<i>Scale</i>	<i>Remarks</i>	<i>Chart withdrawn</i>
AX 00110S	10/2/2012	Australia - South Coast - Western Australia - King George Sound	1:25 000	Fleet use only	AX0110E
AX 00118S	10/2/2012	Australia - South Coast - Western Australia - Approaches to King George Sound	1:75 000	Fleet use only	AX0118E
AX 00249S	10/2/2012	Australia - East Coast - Queensland - Approaches to Hay Point and Mackay	1:75 000	Fleet use only	AX0249E
AX 00260S	10/2/2012	Australia - East Coast - Queensland - Broad Sound Channel and Shoalwater Bay	1:75 000	Fleet use only	AX0260E
AX 00334S	10/2/2012	Australia - West Coast - Western Australia - Ledge Point to Cape Naturaliste	1:300 000	Fleet use only	AX0334E
AX 00343S	10/2/2012	Australia - South Coast - South Australia - Whidbey Isles to Cape du Couedic	1:300 000	Fleet use only	AX0343E
AX 00367S	10/2/2012	Australia - East Coast - Queensland - North Reef to Pine Peak Island	1:300 000	Fleet use only	AX0367E
AX 00754S	10/2/2012	Australia - West Coast - Western Australia - Lancelin to Cape Peron	1:150 000	Fleet use only	AX0754E
AX 00755S	10/2/2012	Australia - West Coast - Western Australia - Cape Peron to Cape Naturaliste	1:150 000	Fleet use only	AX0755E
AX 00776S	10/2/2012	Australia - South Coast - South Australia - Williams Island to Winceby Island	1:150 000	Fleet use only	AX0776E
AX 00808S	10/2/2012	Australia - East Coast - New South Wales - Jervis Bay to Port Jackson	1:150 000	Fleet use only	AX0808E
AX 00809S	10/2/2012	Australia - East Coast - New South Wales - Port Jackson to Port Stephens	1:150 000	Fleet use only	AX0809E
AX 00820S	10/2/2012	Australia - East Coast - Queensland - North Reef to Port Clinton	1:150 000	Fleet use only	AX0820E
AX 00822S	10/2/2012	Australia - East Coast - Queensland - Port Clinton to Percy Isles	1:150 000	Fleet use only	AX0822E
AX 00823S	10/2/2012	Australia - East Coast - Queensland - Percy Isles to Mackay	1:150 000	Fleet use only	AX0823E

Chart permanently withdrawn without replacement

Chart
Aus 442

Erratum

Notice 95/12 Edition 2, last correction to read 1122/11

For further details refer to the AHS website at www.hydro.gov.au for new edition and new chart stock arrival information.

When placing orders with a chart agent, mariners should advise whether their order pertains to the current edition or the new edition.

134 AUSTRALIA - Product - Amendment to Australian National Tide Tables 2012

Australian Hydrographic Service (AA580585, AA580586)

Page xxxviii

Insert Wallaroo To Chart Datum AUS 777 NE 27 JAN 2012 0.0

Page 388

Amend Emu Bay To Chart Datum to 0.0*Amend* Kingscote To Chart Datum to 0.0**135* AUSTRALIA - QUEENSLAND - Cairns - Trinity Inlet - Light buoys**

Maritime Safety Queensland Notice 82/2012 (AA580590)

Aus 263 [1109/2010]

<i>Amend</i>	light buoy to <i>Fl.Y.3s T7</i>	16° 56'.53 S	145° 46'.88 E
	light buoy to <i>Fl.R.3s T10</i>	16° 56'.47 S	145° 47'.00 E

Aus 264 [847/2011]

<i>Amend</i>	light buoy to <i>Fl.Y.3s T7</i>	16° 56'.53 S	145° 46'.88 E
	light buoy to <i>Fl.R.3s T10</i>	16° 56'.47 S	145° 47'.00 E

136* AUSTRALIA - QUEENSLAND - Cowie Point - WreckHMAS *Paluma* (DHDB 1634135)**Aus 831 [1119/2011]**

<i>Delete</i>	wreck	15° 56'.9 S	145° 26'.0 E
---------------	-------	-------------	--------------

137* AUSTRALIA - QUEENSLAND - Corbett Reef - Depth

UKHO (AA580709, AA580710)

Aus 833 [1063/2011]

<i>Insert</i>	depth, 6 ₁ <i>m</i>	13° 53'.50 S	144° 04'.23 E
	contour, between	13° 53'.28 S	144° 04'.07 E
		13° 53'.60 S	144° 04'.20 E
		13° 53'.42 S	144° 04'.45 E

<i>Delete</i>	depth, 20 ₅	13° 53'.7 S	144° 04'.2 E
---------------	------------------------	-------------	--------------

138* AUSTRALIA - QUEENSLAND - Cape York - Depth northwestwardsHMAS *Paluma* (DHDB 2012507)**Aus 292 [30/2012]**

<i>Insert</i>	depth, 14 ₉ <i>m</i> , enclosed by contour	10° 39'.65 S	142° 31'.26 E
---------------	---	--------------	---------------

<i>Delete</i>	depth, 15 ₇ <i>m</i>	10° 39'.7 S	142° 31'.3 E
---------------	---------------------------------	-------------	--------------

Aus 376 [1305/2011]

<i>Insert</i>	depth, 14 ₉ <i>m</i> , enclosed by contour	10° 39'.65 S	142° 31'.26 E
---------------	---	--------------	---------------

<i>Delete</i>	depth, 15 ₄ <i>m</i>	10° 39'.7 S	142° 31'.3 E
---------------	---------------------------------	-------------	--------------

Aus 839 [1180/2011]

<i>Insert</i>	depth, 14 ₉ <i>m</i> , enclosed by contour	10° 39'.65 S	142° 31'.26 E
---------------	---	--------------	---------------

<i>Delete</i>	depth, 16 <i>m</i>	10° 39'.7 S	142° 31'.3 E
---------------	--------------------	-------------	--------------

139* AUSTRALIA - NORTHERN TERRITORY - Wessel Islands - Chart limits; depths

Australian Hydrographic Service (AA579418)

Aus 4720 (INT 720) [1125/2011]

Insert accompanying block 10° 50'.0 S 136° 00'.0 E

Aus 4721 (INT 721) [1243/2011]Insert accompanying block A 10° 50'.0 S 136° 00'.0 E
accompanying block B 10° 50'.0 S 133° 00'.0 EDelete magenta limit, between 10° 14'.1 S 131° 44'.8 E
9° 30'.2 S 131° 44'.8 E
9° 30'.2 S 132° 51'.7 E**AX 4720F [1125/2011]**

Insert accompanying block 10° 50'.0 S 136° 00'.0 E

AX 4721F [1243/2011]Insert accompanying block A 10° 50'.0 S 136° 00'.0 E
accompanying block B 10° 50'.0 S 133° 00'.0 EDelete magenta limit, between 10° 14'.1 S 131° 44'.8 E
9° 30'.2 S 131° 44'.8 E
9° 30'.2 S 132° 51'.7 E**140* AUSTRALIA - NORTHERN TERRITORY - Lee Point - Depths**

iXSurvey Australia Pty Ltd (DHDB 1772101)

Aus 26 [1306/2011]

Insert accompanying block 12° 18'.5 S 130° 50'.5 E

Aus 309 [849/2011]

Insert accompanying block 12° 22'.0 S 130° 52'.0 E

Aus 722 [1306/2011]

Insert accompanying block 12° 17'.0 S 130° 48'.0 E

AX 0309F [849/2011]

Insert accompanying block 12° 22'.0 S 130° 52'.0 E

AX 72026 [1306/2011]

Insert accompanying block 12° 18'.5 S 130° 50'.5 E

AX 72309 [849/2011]

Insert accompanying block 12° 22'.0 S 130° 52'.0 E

AX 72722 [1306/2011]

Insert accompanying block 12° 17'.0 S 130° 48'.0 E

141* AUSTRALIA - NORTHERN TERRITORY - Darwin - Middle Arm - WreckHMAS *Melville* (DHDB 1097133)**Aus 24 [32/2012]**Substitute depth, 7₄m, for depth, 5₁m 12° 28'.72 S 130° 48'.14 E**Aus 26 [140/2012]**Substitute depth, 7₄m, for depth, 5₁m 12° 28'.72 S 130° 48'.14 E**AX 72026 [140/2012]**Substitute depth, 7₄m, for depth, 5₁m 12° 28'.72 S 130° 48'.14 E

142* AUSTRALIA - WESTERN AUSTRALIA - Emeriau Point - Depth northwestwards
UKHO (AA580709, AA580710)

Aus 323 [996/2010]

Substitute depth, 15m, for depth, 13₃m 16° 44'.1 S 122° 26'.8 E

143* AUSTRALIA - WESTERN AUSTRALIA - Port Walcott - Legends
Australian Hydrographic Service (AA579051)

Aus 55 [99/2012]

Amend magenta legend to C 20° 36'.38 S 117° 25'.34 E
magenta legend to C 20° 36'.51 S 117° 25'.74 E

144* AUSTRALIA - WESTERN AUSTRALIA - Mangrove Passage - Moorings
Department of Transport WA (AA580603, AA580604, AA579570)

Aus 743 [101/2012]

Insert dashed line with legend, *Moorings*, between
21° 25'.0 S 115° 24'.0 E
21° 25'.0 S 115° 29'.0 E
21° 28'.0 S 115° 29'.0 E
21° 28'.0 S 115° 24'.0 E
21° 25'.0 S 115° 24'.0 E

145* AUSTRALIA - WESTERN AUSTRALIA - Exmouth - Light buoy
Department of Transport WA (AA578578)

Aus 72 (plan, Exmouth Boat Harbour) [NC 26/8/2011]

Delete light buoy 21° 57'.41 S 114° 08'.48 E

146* AUSTRALIA - WESTERN AUSTRALIA - Albany - Light beacon
Albany Port Authority (AA580703)

Aus 109 [1072/2011]

Amend light beacon to *Iso.4s 4M* 35° 02'.75 S 117° 54'.65 E

147* AUSTRALIA - SOUTH AUSTRALIA - Streaky Bay - Light beacon
UKHO (AA579525)

Aus 341 [1310/2011]

Insert light beacon, *Fl.WR.1.5s 6M*, 32° 44'.19 S 134° 13'.97 E

Move light beacon 32° 41'.2 S 134° 09'.7 E
to 32° 40'.54 S 134° 09'.67 E

Aus 342 [302/2011]

Insert light beacon, *Fl.WR.1.5s 6M*, 32° 44'.19 S 134° 13'.97 E

Move light beacon 32° 41'.2 S 134° 09'.7 E
to 32° 40'.54 S 134° 09'.67 E

148* AUSTRALIA - VICTORIA - Port Phillip - Chart note
Australian Hydrographic Service (AA580600, AA580607)

Aus 158 [44/2012]

Amend note to read*Australia Pilot Vol II NP14.*
Information..... 38° 13'.8 S 144° 32'.5 E

149* AUSTRALIA - CORAL SEA - Norfolk Island - Depths
Geoscience Australia (DHDB 1702013)

Aus 609 [692/2010]

Insert accompanying block A
accompanying block B

28° 54'.0 S 167° 40'.0 E
29° 14'.0 S 167° 40'.0 E

Aus 4060 (INT 60) [1192/2011]

Insert accompanying block

29° 30'.0 S 168° 30'.0 E

Aus 4602 (INT 602) [1261/2011]

Insert accompanying block

29° 20'.0 S 168° 30'.0 E

150(T)/2012 AUSTRALIA - NEW SOUTH WALES - Bowen Island - Minefield

Date - Until 24 February 2012

Department of Defence (AA579050)

A buoyant minefield, least depth *15m*, exists in an area bounded by the following positions:

35° 07'.97 S 150° 46'.08E

35° 08'.00 S 150° 46'.73E

35° 08'.99 S 150° 46'.74E

35° 08'.99 S 150° 46'.08E.

Chart temporarily affected - Aus 193 - Aus 807 - Aus 808 - AX 00808S - AX 60193 - AX 70193

151(T)/2012 AUSTRALIA - QUEENSLAND - Moreton Bay - Brisbane River - Depth information

Former Notices - 48(T)/2012, 112(T)/2012 are cancelled

Brisbane Port Corporation (AA581812)

Available depths and under keel clearances (UKC) at 7 February 2012:

<i>Berth</i>	<i>Metres</i>	<i>Remarks</i>
* Fisherman Islands No10	14.0	
* Fisherman Islands No9	14.0	
* Fisherman Islands No8	13.9	
Fisherman Islands No7	14.0	
* Fisherman Islands No6	14.0	
Fisherman Islands No5	14.0	
* Fisherman Islands No4	13.7	
* Fisherman Islands No3	13.8	
Fisherman Islands No2	14.0	
* Fisherman Islands No1	14.0	
* Fisherman Islands Grain and Woodchip	13.0	
Caltex Fisherman Islands	14.6	
* Fisherman Islands Coal	13.9	
* Fisherman Islands General Purpose	11.3	
* BP Luggage Point	13.7	
* Caltex Products	10.0	
* Cement Australia Co Wharf	9.2	
* BP Products	10.7	
Shell	10.9	
* Pacific Terminals	10.5	
Incitec North	10.0	
* Incitec South	9.8	
* Pinkenba 1	10.3	
* Pinkenba 2	10.3	
Riverside Marina	-	
* Sugar Terminal	9.8	
Cairncross Fitting Out Wharf	8.0	
Cairncross Breasting Wharf	6.3	
Brisbane Naval Wharf	4.3	
Maritime No3	5.6	(not maintained)
* Maritime No2	8.4	
* Maritime No1	9.0	
Hamilton No4	10.0	
* Hamilton No1	9.0	
* Brisbane Cruise Ship Terminal	8.8	
	<i>Metres</i>	<i>UKC/Remarks</i>
<i>Moreton Bay :</i>		
North East Channel	5.5	1.5
North West Channel	15.0	2.3 (280m width)
North West Bypass Channel	9.2	1.6
* Spitfire Channel	14.9	1.5 (600m width)
* East Knoll Bypass Channel	6.0	1.4
East Channel	15.0	1.5 (300m width from western side)
Main Channel (M8 - M9)	10.0	1.8
Entrance Channel (E5 - EBCN)	14.7	1.5
<i>Brisbane River :</i>		
* Entrance Beacons and Bar Cutting	13.5	1.46
Fisherman Islands Swing Basin	13.5	1.3
Pelican Banks Reach to Hamilton Reach	9.0	0.6 / 0.9 (draft/tide)
Cement Australia Swing Basin	9.0	0.6 / 0.9 (draft/tide)
Pinkenba Swing Basin	9.0	0.6 / 0.9 (draft/tide)
Hamilton Swing Basin	9.0	0.6 / 0.9 (draft/tide)
* Indicates new or revised entry.		

Chart temporarily affected - Aus 235 - Aus 236 - Aus 237 - Aus 238 - Aus 814 - Aus 815

152(T)/2012 AUSTRALIA - QUEENSLAND - Moreton Bay - Ship to ship transfer

Former Notice - 1201(T)/2011 is cancelled

Date - Until 31 March 2012

Maritime Safety Queensland Notice 112(T)/2012 (AA581824)

Ship to ship transfer of LPG will be conducted at STS1 anchorage (27° 17'.25 S 153° 16'.56 E). An exclusion zone (1850 metres radius) exists around transfer operations.

Chart temporarily affected - Aus 236

153(T)/2012 AUSTRALIA - QUEENSLAND - Pumicestone Channel - Ningi Creek - Beacons re-established

Former Notice - 1323(T)/2011 is cancelled

Maritime Safety Queensland Notice 91/2012 (AA581037)

Cancel this notice on receipt.

Chart formerly affected - Aus 236

154(T)/2012 AUSTRALIA - QUEENSLAND - Mooloolaba - Shoaling

Former Notice - 115(T)/2012 is cancelled

Maritime Safety Queensland Notice 104(T)/2012 (AA581405)

Shoaling with a least depth of *1.6m* exists within the main channel to Mooloolah River, between positions 26° 40'.74 S 153° 07'.95 E and 26° 40'.74 S 153° 07'.87 E. A least depth of *2.6m* exists between positions 26° 40'.74 S 153° 07'.87 E and 26° 40'.81 S 153° 07'.93 E.

Mariners are advised to navigate with caution in the area.

Chart temporarily affected - Aus 235

155(T)/2012 AUSTRALIA - QUEENSLAND - Gladstone - Pipelines

Former Notice - 116(T)/2012 is cancelled

Date - Until 31 December 2012

Maritime Safety Queensland Notices 1115(T)/2011, 1132(T)/2011, 57(T)/2012, 99(T)/2012 (AA567581, AA567881, AA578641, AA581568)

Submarine pipelines, marked by unlit orange buoys and lit special buoys, exist between;

23° 46'.87 S 151° 10'.14 E

23° 46'.69 S 151° 10'.70 E

23° 46'.68 S 151° 11'.06 E

23° 46'.94 S 151° 11'.59 E

23° 47'.06 S 151° 11'.96 E

and

23° 47'.06 S 151° 11'.96 E

23° 46'.77 S 151° 11'.65 E

and

23° 46'.56 S 151° 10'.03 E

23° 46'.65 S 151° 10'.71 E

23° 46'.64 S 151° 10'.88 E

23° 46'.56 S 151° 11'.12 E

23° 46'.38 S 151° 11'.38 E

and

23° 46'.65 S 151° 10'.71 E

23° 46'.31 S 151° 10'.98 E

23° 46'.07 S 151° 11'.07 E

and

23° 46'.18 S 151° 09'.95 E

23° 45'.49 S 151° 10'.34 E

23° 45'.40 S 151° 10'.55 E

and

23° 48'.37 S 151° 12'.95 E

23° 49'.24 S 151° 12'.57 E.

Mariners are advised to navigate with caution in the area.

Chart temporarily affected - Aus 244 - Aus 245

156(T)/2012 AUSTRALIA - QUEENSLAND - Abbot Point - Drilling operations

Date - Until 29 February 2012

Maritime Safety Queensland Notice 110(T)/2012 (AA581795)

Drilling operations are in progress at Abbot Point Wharf. An exclusion zone exists in within an area bounded by the following positions:

19° 51'.36 S 148° 06'.19 E

19° 51'.28 S 148° 05'.25 E

19° 51'.69 S 148° 05'.92 E

19° 51'.32 S 148° 04'.91 E.

The works will be conducted during daylight hours by MV *Delphi*. The vessel will display appropriate lights and symbols and will monitor VHF Ch 12 and Ch 16.

Mariners are advised to navigate with caution in the area.

Chart temporarily affected - Aus 255

157(T)/2012 AUSTRALIA - QUEENSLAND - Townsville - Ross River - Light buoy off station

Maritime Safety Queensland Notice 109(T)/2012 (AA581794)

The starboard lateral light buoy, *Fl.G.2-5s*, (19° 15'.30 S 146° 50'.85 E) is off station.

Chart temporarily affected - Aus 257

158(T)/2012 AUSTRALIA - QUEENSLAND - Cairns - Depth information

Former Notice - 873(T)/2011 is cancelled

Maritime Safety Queensland Notice 80(T)/2012 (AA580589)

Available depths as of 30 January 2012:

	<i>Metres</i>	<i>Remarks</i>
Entrance Channel	8.3	
Crystal Swing Basin at:		
* 360 metre diameter	6.8	
* 380 metre diameter	6.4	
Swing Basin at:		
310 metre diameter	8.7	
* 320 metre diameter	7.8	
Marlin Marina	3.3	
Berths:		
* No 1	8.4	
No 2	8.5	
No 3	8.4	
No 4	8.4	
* No 5	8.2	
* No 6	8.1	between 500 metres and 550 metres
* No 6	7.7	between 550 metres and 600 metres
* No 7	9.9	
* No 8	10.0	
No 10	9.3	
No 12	10.5	
Smiths Creek 1	4.7	

* Indicates revised entry.

Chart temporarily affected - Aus 262 - Aus 263 - Aus 264 - Aus 830

159(T)/2012 AUSTRALIA - QUEENSLAND - Thursday Island - West Wai-Weer Reef - Light beacon destroyed

Maritime Safety Queensland Notice 111(T)/2012 (AA581828)

The light beacon, Fl.R 2.5s (10° 34'.36 S 142° 10'.08 E) has been destroyed.

Chart temporarily affected - Aus 293 - Aus 299

160(T)/2012 AUSTRALIA - NORTHERN TERRITORY - Cape Wessels - Wreck westnorthwestward

Former Notice - 617(T)/2011 is cancelled

HMAS *Melville* (AA539627, AA539628)

A partially submerged 25m fishing vessel is moored in position 10° 41'.56 S 135° 43'.08 E.

Mariners are advised to navigate with caution in the area.

Chart temporarily affected - Aus 306 - AX 0306F

161(T)/2012 AUSTRALIA - TIMOR SEA - Seismic survey

Former Notice - 66(T)/2012 is cancelled

Date - Until 9 March 2012

MEO Australia Ltd (AA581649, AA581650)

RV *Veritas Viking II* is conducting a survey in the area bounded by the following positions:

13° 26'.64 S 127° 54'.60 E

13° 35'.79 S 127° 40'.69 E

13° 56'.78 S 128° 02'.90 E

13° 42'.71 S 128° 12'.83 E

Chart temporarily affected - Aus 315

162(T)/2012 AUSTRALIA - TIMOR SEA - Van Cloon Shoal - Seismic survey

Former Notice - 125(T)/2012 is cancelled

Date - Until 7 March 2012

Albers Group (AA581760, AA582164)

RV *Voyager Explorer* is conducting a survey in the areas bounded by the following positions:

12° 04'.85 S 126° 37'.72 E

12° 18'.70 S 126° 47'.08 E

12° 29'.13 S 126° 35'.71 E

12° 28'.40 S 126° 22'.76 E

12° 17'.24 S 126° 15'.10 E

Chart temporarily affected - Aus 315

163(T)/2012 AUSTRALIA - WESTERN AUSTRALIA - Lesueur Island - Drilling operations completed

Former Notice - 772(T)/2011 is cancelled

Australian Hydrographic Service (AA579608), Santos Ltd (AA545817)

Cancel this notice on receipt.

Chart formerly affected - Aus 315 - AX 0315F

164(T)/2012 AUSTRALIA - WESTERN AUSTRALIA - Dampier - Mermaid Sound - Light beacons removed

Dampier Port Authority Notice 04/2012 (AA582170, AA582171)

The following light beacons have been removed for refurbishment; special light buoys exist in situ.

<i>Name</i>	<i>Position</i>	<i>Light buoy characteristic</i>
No 8	20° 32'.75 S 116° 43'.42 E	Q. Y
No 10	20° 33'.24 S 116° 43'.80 E	Fl(2)Y.5s
No 11	20° 33'.65 S 116° 44'.24 E	Fl. Y.3s
No 12	20° 34'.20 S 116° 44'.89 E	Fl(2)Y.5s

Chart temporarily affected - Aus 58

165(T)/2012 AUSTRALIA - WESTERN AUSTRALIA - Dampier Archipelago - Platform installation; mooring buoys northwards

Former Notice - 1045(T)/2011 is cancelled

Date - Until 20 March 2012

SSCV *Hermod* (AA581857, AA581858, AA581859)

SSCV *Hermod* is moored in position 19° 35'.07 S 116° 07'.75 E and has deployed anchors marked by buoys within a 2000m radius.

Unlit orange mooring buoys exist in positions 19° 29'.5 S 116° 07'.9 E and 19° 28'.9 S 116° 07'.8 E.

A wave rider buoy has been established in position 19° 33.30 S 116° 07'.40 E

Chart temporarily affected - Aus 327

166(T)/2012 AUSTRALIA - SOUTH AUSTRALIA - Great Australian Bight - Ceduna Terrace - Seismic survey

Former Notice - 1226(T)/2011 is cancelled

Date - Until 10 May 2012

NT Shipping Agencies (AA565932, AA581292)

MV *Ramform Sterling*, with a 9100m towed array, and support vessels, *Ocean Dynasty* and *Unlimited*, are conducting a survey in the areas bounded by the following positions:

33° 34'.25 S 129° 23'.50 E

33° 34'.25 S 130° 45'.00 E

34° 29'.50 S 131° 52'.00 E

35° 30'.00 S 131° 52'.00 E

35° 30'.00 S 129° 23'.50 E

and

37° 15'.0 S 137° 30'.0 E

37° 46'.0 S 137° 30'.0 E

37° 46'.0 S 129° 46'.0 E

33° 32'.0 S 129° 46'.0 E.

Chart temporarily affected - Aus 343 - Aus 346 - AX 00343S - Aus 4727 (INT 727) - Aus 4728 (INT 728)

167(T)/2012 AUSTRALIA - VICTORIA - Otway Basin - Drilling operations

Date - Until 13 April 2012

Origin Energy (AA579496)

The drill rig *Stena Clyde* is in position 38° 58'.00 S 142° 53'.47 E. A 500m safety zone and 2.5M cautionary zone exist around the vessel.

The vessel will display AIS and Racon (D).

Chart temporarily affected - Aus 349 - Aus 787

168(T)/2012 AUSTRALIA - TASMANIA - D'Entrecasteaux Channel - Huon Island - Scientific instrument recovered

Former Notice - 780(T)/2011 is cancelled

Marine and Safety Tasmania (AA580706)

Cancel this notice on receipt.

Chart formerly affected - Aus 173 - Aus 795

169(T)/2012 AUSTRALIA - TASMANIA - Hebe Reef - Harbour works

Date - Until 31 March 2012

Marine and Safety Tasmania Notice M19/2012 (AA581862)

Works are being carried out by the barge *Kulanda* at Hebe Reef light beacon (41° 03'.0 S 146° 44'.3 E).

The barge is moored on the south side of the light beacon.

Chart temporarily affected - Aus 167

170(T)/2012 AUSTRALIA - TASMANIA - Bell Bay - Harbour works

Date - Until 31December2012

Marine and Safety Tasmania Notice M16/2012 (AA581306)

Works associated with the remediation of existing dolphins and construction of a new dolphin are in progress in the vicinity of position 41° 08'.00 S 146° 52'.26 E.

Chart temporarily affected - Aus 167

171(T)/2012 AUSTRALIA - VICTORIA - Port Phillip - South Channel - Shoaling

Former Notice - 1171(T)/2011 is cancelled

Victorian Notice 127(T)/2011, 128(T)/2011, 21(T)/2012 (AA565638, AA565639, AA581412)

Virtual AIS exist as follows:

<i>Position</i>	<i>Identification Message</i>
38° 18'.22 S 144° 44'.36 E	TB1
38° 18'.27 S 144° 45'.65 E	TB2
38° 19'.09 S 144° 48'.71 E	TB3

Shoaling with a least depth of *14.9m* exists north of a line joining the positions and a least depth of *15.2m* to the south. Shoaling with least depth *13.4* exists to the north of position 38° 18'.27 S 144° 45'.65 E.

Mariners are advised to navigate with caution in the area.

Chart temporarily affected - Aus 144 - Aus 158

172(T)/2012 AUSTRALIA - VICTORIA - Port Phillip - South Channel - Dredging

Date - Until 12 March 2012

Victorian Notice 22(T)/2012 (AA581407)

The dredge *Brisbane* and support vessels *Pacific Conquest* and *John Norgate* are conducting dredging operations in the South Channel.

Dredge spoil will be deposited in the spoil ground at 38° 20'.2 S 144° 51'.9 E

All vessels will display appropriate lights and monitor VHF Ch 12.

Mariners are advised to navigate with caution in the area.

Chart temporarily affected - Aus 143 - Aus 144 - Aus 158

173(T)/2012 AUSTRALIA - VICTORIA - Port Phillip - Port Melbourne - Depths restored

Former Notice - 993(T)/2011 is cancelled

Victorian Notices 15/2012, 16/2012 (AA581171, AA581172)

Cancel this notice on receipt.

Chart formerly affected - Aus 154

174(T)/2012 AUSTRALIA - VICTORIA - Corner Inlet - Franklin Channel - Mooring buoy

Former Notice - 81(T)/2012 is cancelled

Victorian Notice 27(T)/2012 (AA581936)

Lit mooring buoy, *Fl. Y.5s*, exists in position 38° 45'.64S 146° 24'.55E (WGS84 datum).

Chart temporarily affected - Aus 181

175(T)/2012 AUSTRALIA - TASMAN SEA - Tasman Basin - Light buoy withdrawn

Former Notice - 84(T)/2012 is cancelled

Australian Bureau of Meteorology (AA581659)

The light buoy, *Fl. Y.2s*, (44° 51'.0 S 161° 44'.0 E), has been temporarily withdrawn.

Chart temporarily affected - Aus 4601 (INT 601)

176(T)/2012 AUSTRALIA - CORAL SEA - Light buoy off station

Australian Bureau of Meteorology (AA581659)

The light buoy, *Fl. Y.2s*, (14° 47'.8 S 153° 34'.7 E), is drifting and currently in position 14° 15'.22 S 155° 05'.33 E (6 Feb 2012).

Chart temporarily affected - AX 4621F - Aus 4621 (INT 621)

HYDROGRAPHIC REPORTS

<i>Locality</i>	<i>Report</i>	<i>Ship/Authority</i>	<i>Observer</i>
Aus Product	Missing chart	HMAS <i>Farncomb</i>	
Southern Ocean – Heard Island	Depths	MV <i>Ocean Protector</i>	L Hosking

NAVIGATION WARNINGS

The following radio messages have been received during the period to 10 February 2012. Signal copies of these messages may be destroyed. It is recommended that the reprint of Navigational Warnings should be kept in a file or a book divided into areas. Cancellation should be made on receipt of signals and reprints.

Rigs on location other than those listed in the latest Section III summary are the subject of Radio Navigational Warnings. Rigs in transit will not be the subject of Warnings.

AUSCOAST WARNING

022 Cancelled.
 023 Cancelled.
 024 Cancelled.
 025 Larpent Bank light buoy in position 10° 34'.71 S 142° 04'.35 E topmark missing.
 026 Special purpose vessel *Seisquest* conducting seismic survey towing 6000m array in an area bounded by 17° 45'.0 S to 18° 30'.0 S and 118° 30'.0 E to 120° 00'.0 E. 6.0M clearance requested.
 027 Special purpose vessel *Seahorse Standard* conducting seismic survey towing 2000m array in an area bounded by 19° 39'.0 S to 20° 05'.0 S and 113° 45'.0 E to 115° 10'.0 E. 2.0M clearance requested.
 028 Drill rig *Ocean Patriot* in position 12° 07'.34 S 125° 00'.34 E. 2.5M clearance requested.
 029 Drill rig *Ensco 104* in position 20° 17'.13 S 116° 16'.95 E. 2.5M clearance requested.
 030 Cancelled.
 031 Cancelled.
 032 Cancelled.
 033 Darwin DGPS in position 12° 26'.72 S 130° 57'.51 E inoperative.
 034 Cancelled.
 035 Cancelled.
 036 Breaksea Spit light buoy in position 24° 21'.37 S 153° 09'.00 E racon temporarily discontinued.

NAVAREA X WARNINGS

Nil

Navigational warnings in force as at 100001UTC FEB 12.**Auscoast**

2011 288 289 290 293 318 319 321 323 328 333 337 338 339
 2012 002 009 025 026 027 028 029 033 036

Navarea X

2011 018
 2012 002

Summary of mobile drilling rigs as at 100001UTC FEB 12.

<i>Name</i>	<i>Position</i>
Stena Clyde	38° 20'.97 S 141° 41'.01 E
Ocean Patriot	12° 07'.34 S 125° 00'.34 E
Ensco 109	12° 40'.20 S 124° 32'.22 E
Ensco 104	20° 17'.13 S 116° 16'.95 E
Atwood Osprey	20° 24'.51 S 114° 50'.98 E
Nan Hai 6	21° 26'.03 S 114° 01'.95 E
Ocean America	21° 20'.10 S 113° 36'.50 E
Atwood Eagle	19° 44'.70 S 113° 15'.20 E

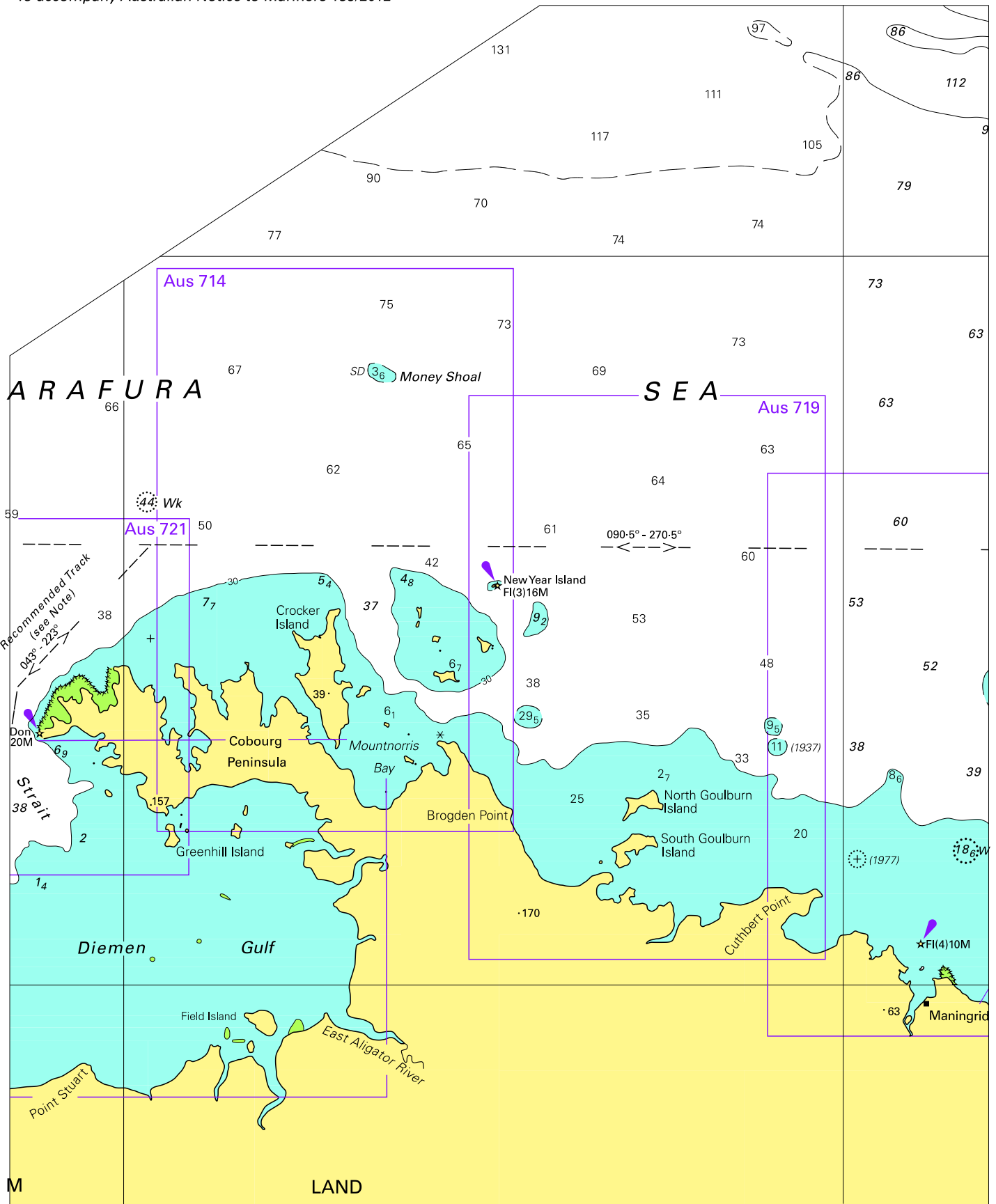
NAVAREA XIV WARNINGS

009 Cancelled.
 010 Cancelled.
 011 Cancelled.
 012 Cancelled.
 013 Cancelled.

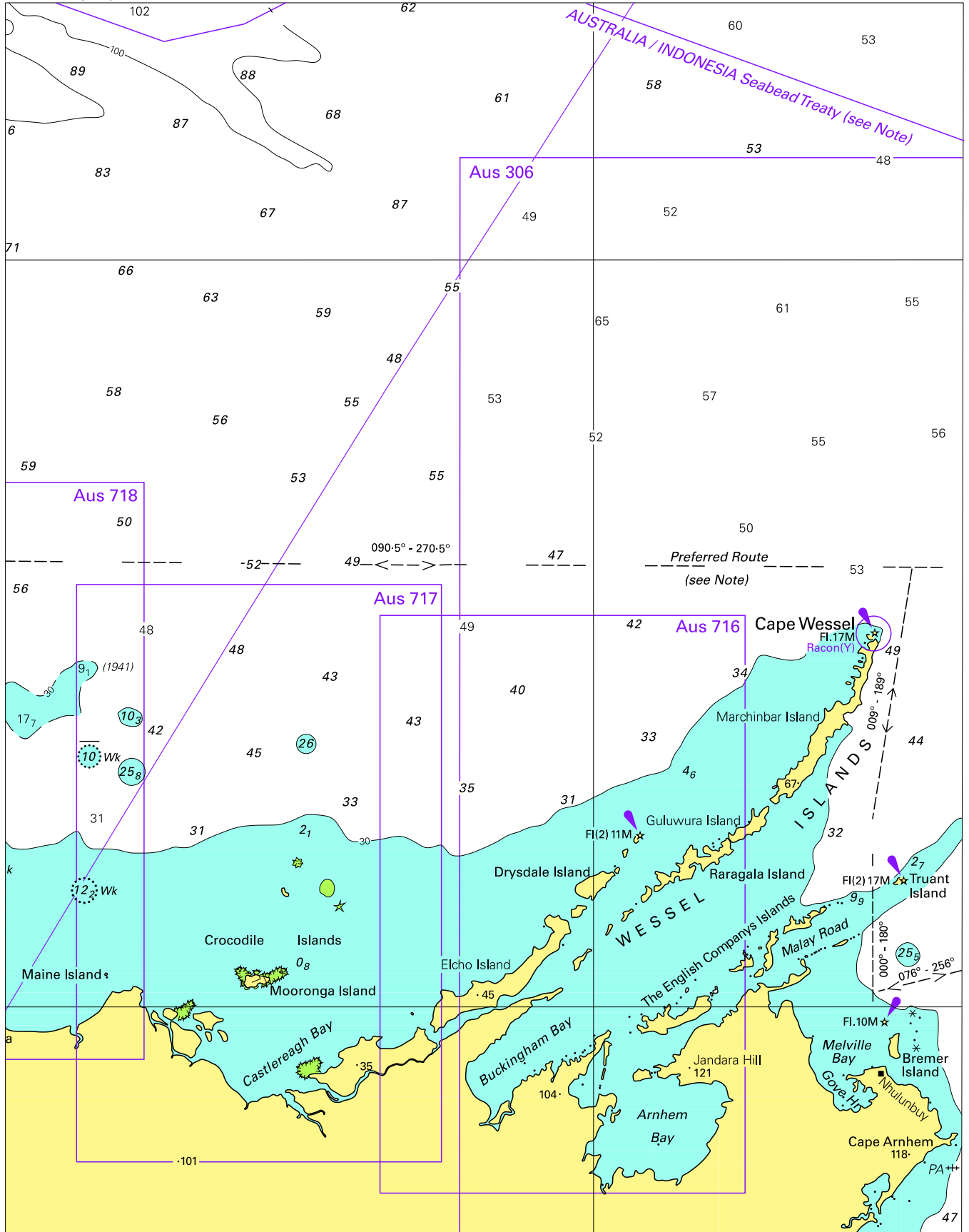
Navarea XIV warnings in force as at 100001UTC FEB 12.

Nil.

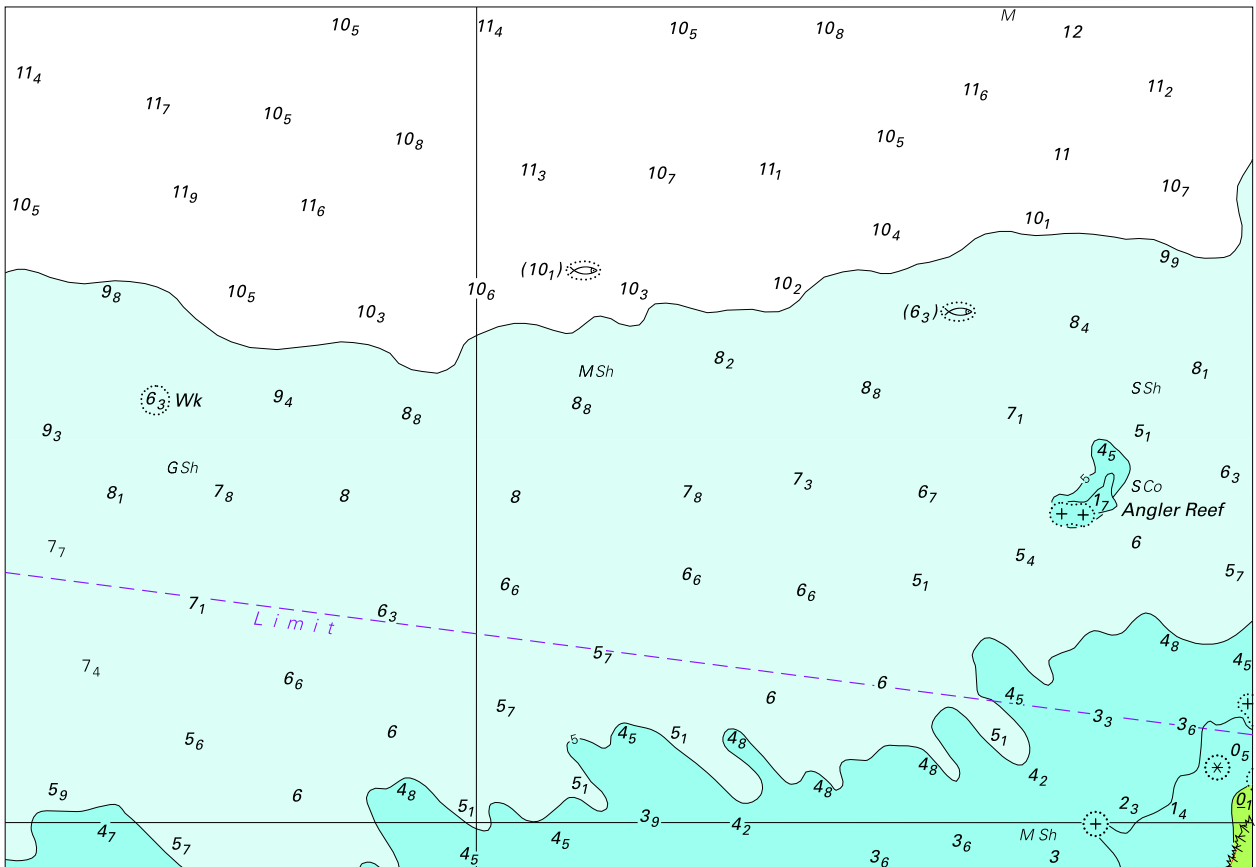
To accompany Australian Notice to Mariners 139/2012



To accompany Australian Notice to Mariners 139/2012



To accompany Australian Notice to Mariners 140/2012

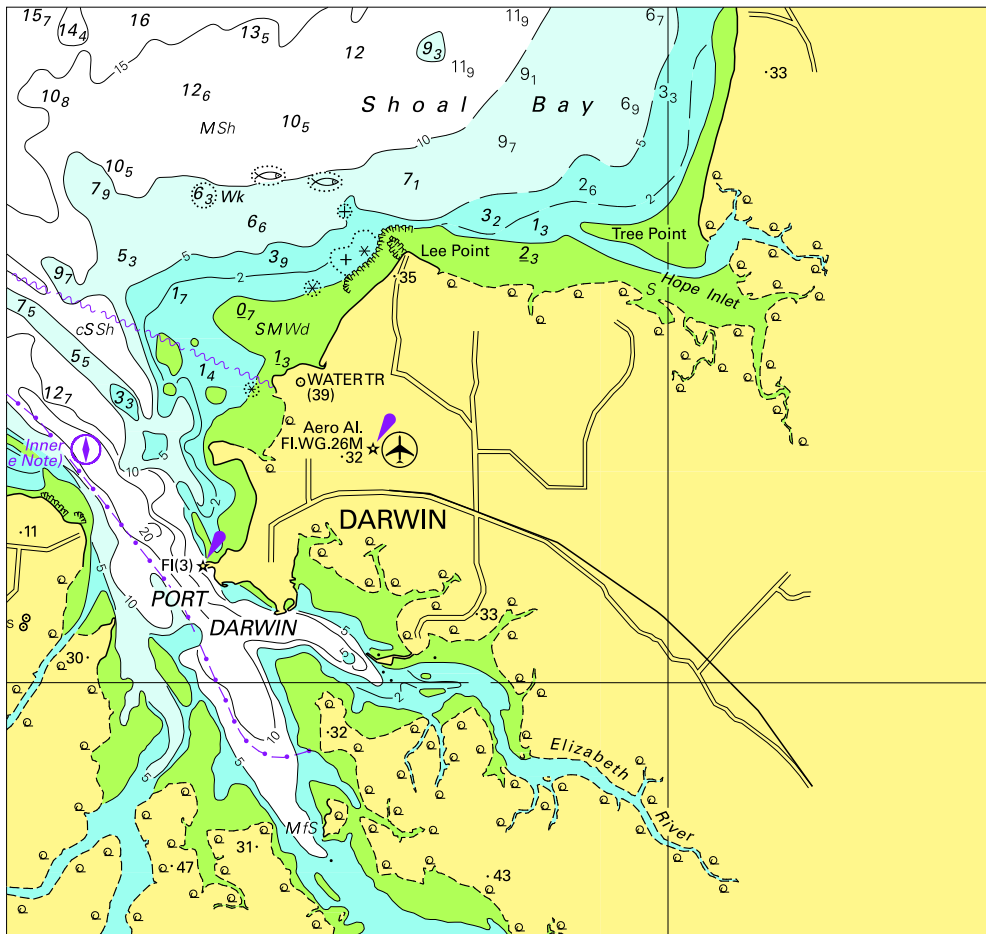


Block for chart Aus26

© Commonwealth of Australia 2012

(165.0 x 113.8mm)

To accompany Australian notice to Mariner 140/2012

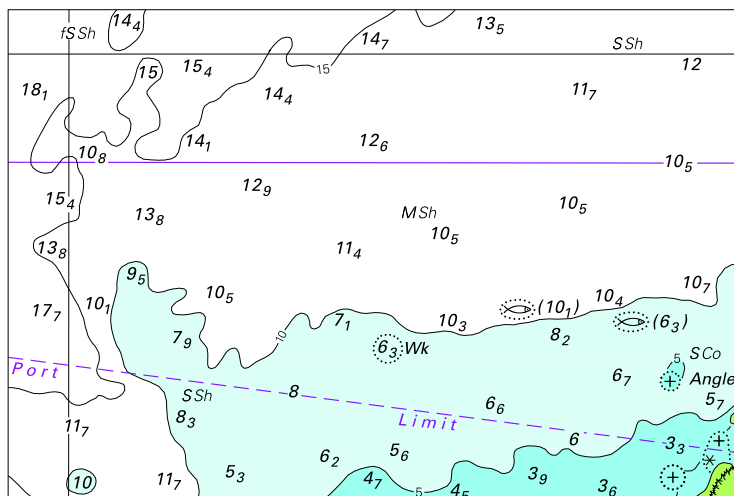


Block for chart Aus309

© Commonwealth of Australia 2012

(130.9 x 122.8mm)

To accompany Australian Notice to Mariners 140/2012

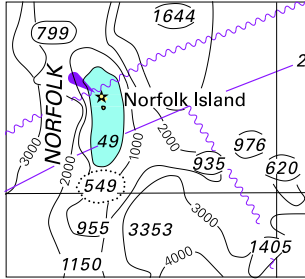


Block for chart Aus722

© Commonwealth of Australia 2012

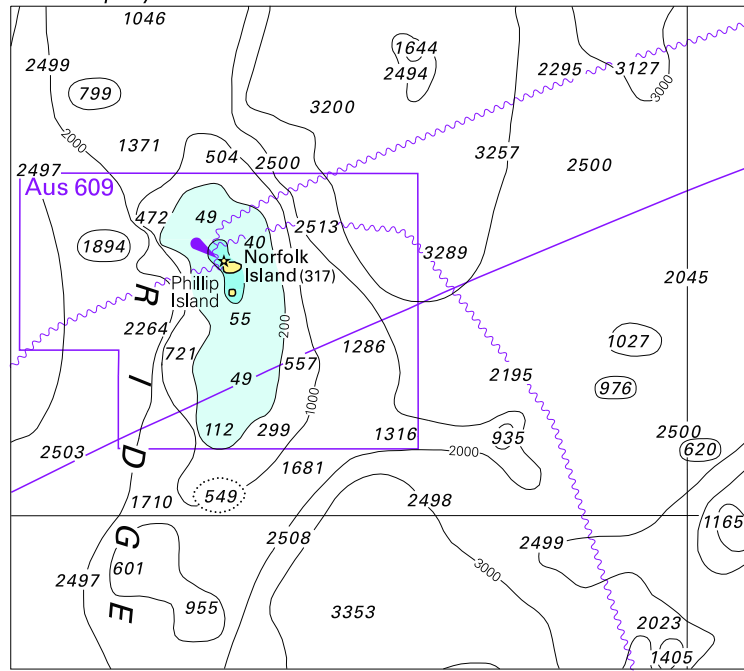
(97.4 x 64.7mm)

To accompany Australian Notice to Mariners 149/2012



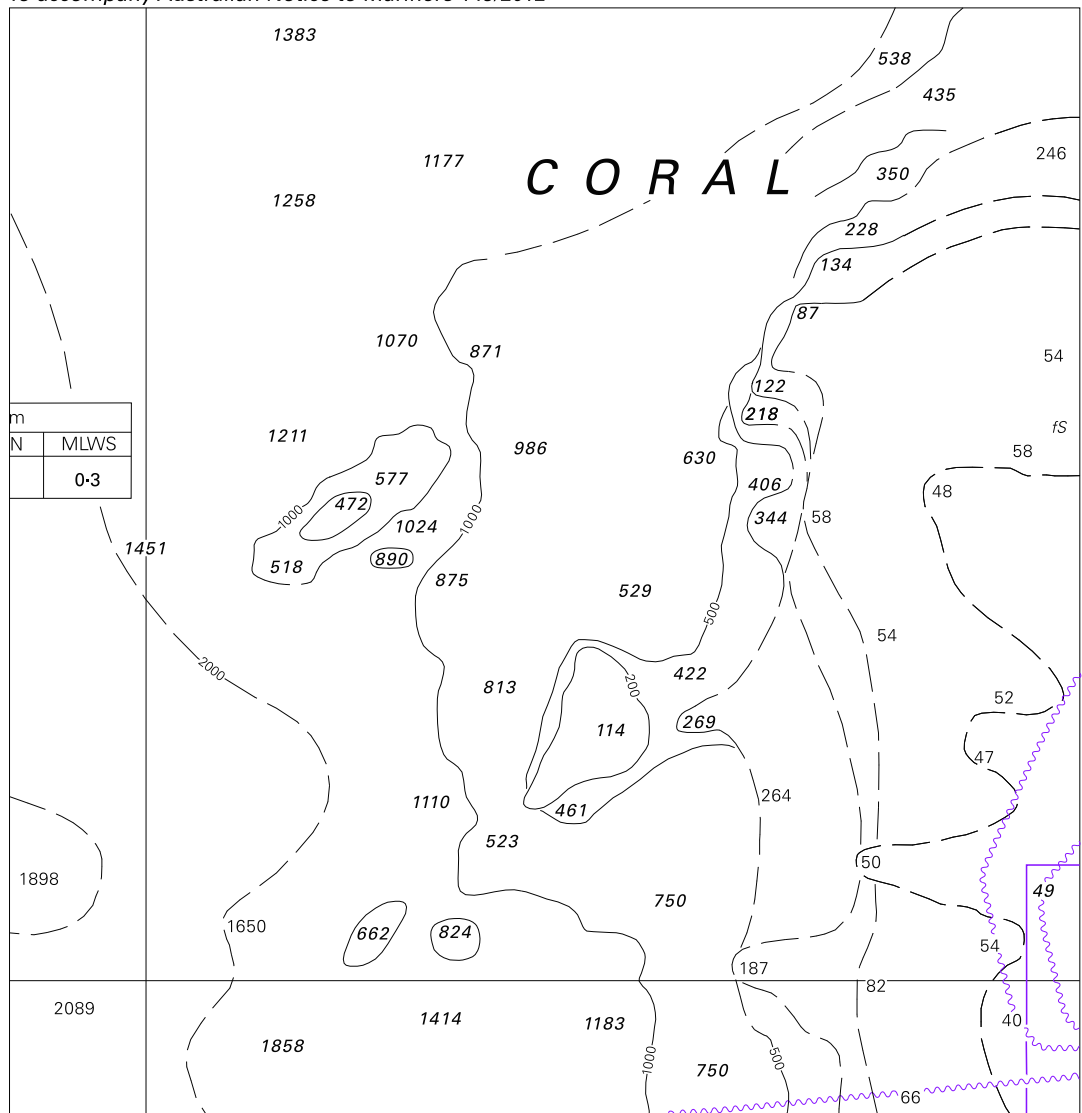
© Commonwealth of Australia 2012
Block for chart Aus 4060
(39.9 x 36.6mm)

To accompany Australian Notice to Mariners 149/2012



© Commonwealth of Australia 2012
Block for chart Aus 4602
(97.2 x 87.7mm)

To accompany Australian Notice to Mariners 149/2012



m	
N	MLWS
	0-3

Block A for chart Aus 609

© Commonwealth of Australia 2012

(141.6 x 146.5mm)

