




27 January 2012

Edition 2

Australian Notices to Mariners are the authority for correcting Australian Charts and Publications

AUSTRALIAN NOTICES TO MARINERS

Notices 86 – 132 

Published fortnightly by the Australian Hydrographic Service

Commodore R. NAIRN RAN
Hydrographer of Australia

SECTIONS.

- I. **Australian Notices to Mariners, including blocks and notes.**
- II. **Hydrographic Reports.**
- III. **Navigational Warnings.**

SUPPLEMENTS.

- I. **Tracings**
- II. **Cumulative List of Australian Notices to Mariners.**
- III. **Cumulative List of Temporary and Preliminary Australian Notices to Mariners.**
- IV. **Temporary and Preliminary Notices in force.**
- V. **Amendments to Admiralty List of Lights and Fog Signals (Vol K), Radio Signals (NP 281(2), 282, 283(2), 285, 286(4)) and Sailing Directions (NP 9, 13, 14, 15, 33, 34, 35, 36, 39, 44, 51, 60, 61, 62, 100, 136).**

© Commonwealth of Australia 2012

This work is copyright. Apart from any use permitted under the Copyright Act 1968, no part may be reproduced by any process, adapted, communicated or commercially exploited without prior written permission from The Commonwealth represented by the Australian Hydrographic Service.

IMPORTANT NOTICE

This edition of Notices to Mariners includes all significant information affecting AHS products which the AHS has become aware of since the last edition. All reasonable efforts have been made to ensure the accuracy and completeness of the information, including third party information, on which these updates are based. The AHS regards third parties from which it receives information as reliable, however the AHS cannot verify all such information and errors may therefore exist. The AHS does not accept liability for errors in third party information.

GENERAL INSTRUCTIONS

The substance of these notices should be inserted on the charts affected.

Bearings are referred to the true compass and are reckoned clockwise from North; those relating to lights are given as seen by an observer from seaward. Positions quoted in permanent notices relate to the horizontal datum for the chart(s). When preliminary or temporary notices affect multiple charts, positions will be provided in relation to only one horizontal datum and that datum will be specified. When the multiple charts do not have a common horizontal datum, mariners will be required to adjust the position(s) for those charts not on the specified datum. The range quoted for a light is its nominal range. Depths are with reference to the chart datum of each chart. Heights are above mean high water springs or mean higher high water, as appropriate.

The capital letter (P) or (T) after the number of any notice denotes a preliminary or temporary notice respectively, which are contained separately at the end of the permanent notices. A star (*) adjacent to the number of a notice indicates that the notice is based on original information.

REPORTING OF DANGERS

Mariners are particularly requested to notify the AUSTRALIAN HYDROGRAPHIC SERVICE, Locked Bag 8801 Wollongong, NSW 2500 (Fax 02-4223 6599, e-mail Hydro.NTM@defence.gov.au or, alternatively by filling in and submitting the [Hydrographic Notes](#) forms located on the web site – www.hydro.gov.au), immediately on the discovery of new dangers or suspected dangers to navigation. For changes or defects in aids to navigation notify AusSAR (Fax 02-6230 6868 or email rccaus@amsa.gov.au).

AUTHORISED USE

Copies of Australian notices are available free of charge from the Australian Hydrographic Service (AHS) website (www.hydro.gov.au) and through the eNotices (email) service (www.hydro.gov.au/enotices/enotices.htm).

Individual Notices may be copied for the purpose of inserting Notice substance on official charts and publications. Paper copies may be printed by chart agents and distributed to customers on a cost recovery basis. Participating chart agents are listed on the AHS website as providing a 'Paper Notices to Mariners' service (www.hydro.gov.au/prodserv/distributors/distributors.htm). Copies of the notices may not be sold for profit without prior written agreement.

NUMERICAL INDEX OF NOTICES TO MARINERS

Edition No 2

Notices	Aus Chart, INT Chart, AHP
86.....	Aus 129, 442, 674, 777, 839
87.....	Cumulative list of temporary and preliminary notices
88.....	Amendment to Australian National Tide Tables 2012
89.....	Aus 197, 200, 489, 808, 809, AX 0808E, 0809E, 63200
90.....	Aus 197, 204, 489, 809, AX 0809E
91.....	Aus 247, 819, 820, AX 0820E
92.....	Aus 248
93.....	Aus 252, 254, 825
94.....	Aus 257
95.....	Aus 379
96.....	Aus 545, 554, 680
97.....	Aus 296
98.....	Aus 52, 53
99.....	Aus 55
100.....	Aus 57
101.....	Aus 64, 328, 743, 744
102.....	Aus 81
103.....	Aus 117, AX 70117
104.....	Aus 755, AX 0755E
105.....	Aus 121
106.....	Aus 348
107.....	Aus 796, 797
108.....	Aus 790
109.....	Aus 357
110(T).....	Aus 207, 208
111(T).....	Aus 230, 813, 814
112(T).....	Aus 236
113(T).....	Aus 238
114(T).....	Aus 238
115(T).....	Aus 235
116(T).....	Aus 244, 245
117(T).....	Aus 250
118(T).....	Aus 252, 253, 824, 825
119(T).....	Aus 252, 253, 268
120(T).....	Aus 255
121(T).....	Aus 255
122(T).....	Aus 377, 378, 379, AX 60377
123(T).....	Aus 6
124(T).....	Aus 26, 28, AX 72026
125(T).....	Aus 314, 315, 319, AX 0314F, 0315F, 0319F
126(T).....	Aus 55, 56
127(T).....	Aus 57, 58
128(T).....	Aus 58, 59, 60
129(T).....	Aus 780
130(T).....	Aus 178
131(T).....	Aus 801
132(T).....	Aus 181, 357

NUMERICAL INDEX OF CHARTS AFFECTED

Edition No 2

Aus Chart	Notices	Aus Chart	Notices
Aus 6.....	123(T)	Aus 780	129(T)
Aus 26.....	124(T)	Aus 790	108
Aus 28.....	124(T)	Aus 796	107
Aus 52.....	98	Aus 797	107
Aus 53.....	98	Aus 801	131(T)
Aus 55.....	99, 126(T)	Aus 808	89
Aus 56.....	126(T)	Aus 809	89, 90
Aus 57.....	100, 127(T)	Aus 813	111(T)
Aus 58.....	127(T), 128(T)	Aus 814	111(T)
Aus 59.....	128(T)	Aus 819	91
Aus 60.....	128(T)	Aus 820	91
Aus 64.....	101	Aus 824	118(T)
Aus 81.....	102	Aus 825	93, 118(T)
Aus 117.....	103	Aus 839	86
Aus 121.....	105	AX 0314F.....	125(T)
Aus 129.....	86	AX 0315F.....	125(T)
Aus 178.....	130(T)	AX 0319F.....	125(T)
Aus 181.....	132(T)	AX 0755E	104
Aus 197.....	89, 90	AX 0808E	89
Aus 200.....	89	AX 0809E	89, 90
Aus 204.....	90	AX 0820E	91
Aus 207.....	110(T)	AX 60377	122(T)
Aus 208.....	110(T)	AX 63200.....	89
Aus 230.....	111(T)	AX 70117.....	103
Aus 235.....	115(T)	AX 72026.....	124(T)
Aus 236.....	112(T)		
Aus 238.....	113(T), 114(T)		
Aus 244.....	116(T)		
Aus 245.....	116(T)		
Aus 247.....	91		
Aus 248.....	92		
Aus 250.....	117(T)		
Aus 252.....	93, 118(T), 119(T)		
Aus 253.....	118(T), 119(T)		
Aus 254.....	93		
Aus 255.....	120(T), 121(T)		
Aus 257.....	94		
Aus 268.....	119(T)		
Aus 296.....	97		
Aus 314.....	125(T)		
Aus 315.....	125(T)		
Aus 319.....	125(T)		
Aus 328.....	101		
Aus 348.....	106		
Aus 357.....	109, 132(T)		
Aus 377.....	122(T)		
Aus 378.....	122(T)		
Aus 379.....	95, 122(T)		
Aus 442.....	86		
Aus 489.....	89, 90		
Aus 545.....	96		
Aus 554.....	96		
Aus 674.....	86		
Aus 680.....	96		
Aus 743.....	101		
Aus 744.....	101		
Aus 755.....	104		
Aus 777.....	86		

86 AUSTRALIA - Product

Australian Hydrographic Service (AA577018)

New Chart

<i>Chart</i>	<i>Published</i>	<i>Title and description of amendments</i>	<i>Scale</i>	<i>Index Chart</i>	<i>Price</i>
Aus 129	27/01/2012	Australia - South Coast - South Australia - Approaches to Nepean Bay 35° 30'.44 S - 35° 48'.10 S 137° 20'.74 E - 137° 57'.60 E Plan: Kingscote 35° 37'.76 S - 35° 39'.81 S 137° 37'.30 E - 137° 39'.82 E <i>New chart providing improved coverage of Nepean Bay.</i>	1:50 000 1:10 000	Aus 5001	\$35.00
Aus 674	27/01/2012	Papua New Guinea - New Britain - North Coast - Approaches to Kimbe including Buluma 5° 20'.72 S - 5° 34'.00 S 150° 05'.00 E - 150° 25'.96 E <i>New chart referred to WGS84 datum and LAT; including the latest surveys and providing improved coverage of the southern waters of Stettin Bay.</i>	1:37 500	Aus 5000	\$35.00

New Edition

<i>Chart</i>	<i>Published</i>	<i>Title and description of amendments</i>	<i>Scale</i>	<i>Index Chart</i>	<i>Price</i>
Aus 777	27/01/2012	Australia - South Coast - South Australia - Winceby Island to Point Riley 33° 40'.6 S - 34° 30'.0 S 136° 06'.0 E - 137° 40'.0 E Plan: Franklin Harbor 33° 41'.0 S - 33° 46'.5 S 136° 55'.6 E - 136° 59'.8 E Lucky Bay 33° 42'.30 S - 33° 43'.08 S 137° 02'.03 E - 137° 03'.00 E <i>New edition referred to LAT; incorporating latest surveys and plans providing improved coverage of Franklin Harbor and Lucky Bay.</i>	1:150 000 1:37 500 1:10 000	Aus 5001	\$35.00
Aus 839	27/01/2012	Australia - East Coast - Queensland - Cairncross Islets to Arden Island 9° 47'.8 S - 11° 20'.8 S 142° 18'.0 E - 143° 17'.4 E <i>New edition incorporating latest surveys.</i>	1:150 000	Aus 5000	\$35.00

Chart permanently withdrawn

<i>Chart</i>	<i>On publication of new chart</i>
Aus 674	Aus 674
Aus 777	Aus 777
Aus 839	Aus 839

Chart to be permanently withdrawn without replacement

<i>Chart</i>	<i>Remarks</i>
Aus 442	On 10 February 2012

For further details refer to the AHS website at www.hydro.gov.au for new edition and new chart stock arrival information.

When placing orders with a chart agent, mariners should advise whether their order pertains to the current edition or the new edition.

87 AUSTRALIA - Cumulative list of temporary and preliminary notices

Australian Hydrographic Service (AA577239)

The Australian Hydrographic Service has commenced publishing a cumulative list of temporary and preliminary notices in force. This list identifies, by its chart number and current edition, each Australian navigational chart of the Australian Charting Area (see *Australian Notice to Mariners No 1 of 2012 and Australian Seafarers Handbook AHP20*); with all extant temporary and preliminary Notices to Mariners. An updated cumulative list will be published each fortnight on the AHS website.

88 AUSTRALIA - Product - Amendment to Australian National Tide Tables 2012

Australian Hydrographic Service (AA576560, AA576561)

ANTT 2012

Page xxxvi

Insert Port Lincoln To Chart Datum AUS 133 NC 16 DEC 2011 0.0

Page xxxviii

Insert Wallaroo To Chart Datum AUS 133 NC 16 DEC 2011 0.0

Page xxxix

Insert Whyalla To Chart Datum AUS 135 NC 16 DEC 2011 0.0

Page 388

Amend Vivonne Bay To Chart Datum to 0.0

Page 392

Amend Port Bonython To Chart Datum to 0.0

Pages 290-293

Substitute accompanying pages**AUSTides 2012**

AusTides maintenance release is available for download from the AHS website: <http://www.hydro.gov.au/seafarer/tides/tides-patches.htm>

89* AUSTRALIA - NEW SOUTH WALES - Port Jackson - North Head - Wrecks

S Willan (AA572554)

Aus 197 [1296/2011]

<i>Insert</i>	safe clearance depth, 45m, enclosed by danger circle with legend, <i>Wk</i>	33° 49'.64 S	151° 18'.69 E
---------------	---	--------------	---------------

<i>Delete</i>	wreck	33° 49'.6 S	151° 18'.7 E
---------------	-------	-------------	--------------

Aus 200 [1297/2011]

<i>Insert</i>	safe clearance depth, 45m, enclosed by danger circle with legend, <i>Wk</i>	33° 49'.635 S	151° 18'.687 E
---------------	---	---------------	----------------

<i>Delete</i>	wreck	33° 49'.55 S	151° 18'.74 E
---------------	-------	--------------	---------------

Aus 489 [1236/2011]

<i>Delete</i>	wreck	33° 49'.6 S	151° 18'.7 E
---------------	-------	-------------	--------------

Aus 808 [1296/2011]

<i>Insert</i>	safe clearance depth, 45m, enclosed by danger circle with legend, <i>Wk</i>	33° 49'.64 S	151° 18'.69 E
---------------	---	--------------	---------------

<i>Delete</i>	wreck	33° 49'.6 S	151° 18'.7 E
---------------	-------	-------------	--------------

89* AUSTRALIA - NEW SOUTH WALES - Port Jackson - North Head – Wrecks *(continued)***Aus 809** [1296/2011]

Insert	safe clearance depth, 45m, enclosed by danger circle with legend, <i>Wk</i>	33° 49'.64 S	151° 18'.69 E
--------	---	--------------	---------------

Delete	wreck	33° 49'.6 S	151° 18'.7 E
--------	-------	-------------	--------------

AX 0808E [1296/2011]

Insert	safe clearance depth, 45m, enclosed by danger circle with legend, <i>Wk</i>	33° 49'.64 S	151° 18'.69 E
--------	---	--------------	---------------

Delete	wreck	33° 49'.6 S	151° 18'.7 E
--------	-------	-------------	--------------

AX 0809E [1296/2011]

Insert	safe clearance depth, 45m, enclosed by danger circle with legend, <i>Wk</i>	33° 49'.64 S	151° 18'.69 E
--------	---	--------------	---------------

Delete	wreck	33° 49'.6 S	151° 18'.7 E
--------	-------	-------------	--------------

AX 63200 [1297/2011]

Insert	safe clearance depth, 45m, enclosed by danger circle with legend, <i>Wk</i>	33° 49'.635 S	151° 18'.687 E
--------	---	---------------	----------------

Delete	wreck	33° 49'.55 S	151° 18'.74 E
--------	-------	--------------	---------------

90* AUSTRALIA - NEW SOUTH WALES - Barrenjoey Head - Wreck southeastwards

S Willan (AA574112 - AA574115)

Aus 197 [89/2012]

Insert	depth, 40m, enclosed by danger circle with legend, <i>Wk</i>	33° 35'.58 S	151° 23'.15 E
--------	--	--------------	---------------

Aus 204 [1236/2011]

Insert	depth, 40m, enclosed by danger circle with legend, <i>Wk</i>	33° 35'.580 S	151° 23'.151 E
--------	--	---------------	----------------

Aus 489 [89/2012]

Insert	depth, 40m, enclosed by danger circle with legend, <i>Wk</i>	33° 35'.58 S	151° 23'.15 E
--------	--	--------------	---------------

Aus 809 [89/2012]

Insert	depth, 40m, enclosed by danger circle with legend, <i>Wk</i>	33° 35'.58 S	151° 23'.15 E
--------	--	--------------	---------------

AX 0809E [89/2012]

Insert	depth, 40m, enclosed by danger circle with legend, <i>Wk</i>	33° 35'.58 S	151° 23'.15 E
--------	--	--------------	---------------

91* AUSTRALIA - QUEENSLAND - Emu Point - Lights

Former Notice - 419(T)/2011 is cancelled
Maritime Safety Queensland (AA577212)

Aus 247 [632/2011]

Amend	light to <i>Ldg Iso. Y.2s</i> & <i>Q. Y</i>	23° 15'.00 S	150° 49'.43 E
-------	---	--------------	---------------

Aus 819 [1301/2011]

Amend	light to <i>Ldg Iso. Y.2s</i> & <i>Q. Y</i>	23° 15'.0 S	150° 49'.4 E
-------	---	-------------	--------------

Aus 820 [845/2011]

Amend	light to <i>Ldg Iso. Y.2s</i> & <i>Q. Y</i>	23° 15'.0 S	150° 49'.4 E
-------	---	-------------	--------------

AX 0820E [845/2011]

Amend	light to <i>Ldg Iso. Y.2s</i> & <i>Q. Y</i>	23° 15'.0 S	150° 49'.4 E
-------	---	-------------	--------------

92* AUSTRALIA - QUEENSLAND - Port Clinton - Port limit

Australian Hydrographic Service (AA577845), Maritime Safety Queensland (AA577303)

Aus 248 [425/2007]

Delete	magenta dashed line with legend, Port Clinton Port Limit, between	22° 28'.73 S	150° 45'.50 E
		22° 31'.02 S	150° 46'.23 E
	magenta dashed line, between	22° 31'.11 S	150° 46'.23 E
		22° 31'.18 S	150° 46'.21 E
	magenta dashed line, between	22° 31'.20 S	150° 46'.21 E
		22° 31'.30 S	150° 46'.18 E

93* AUSTRALIA - QUEENSLAND - Whitsundays - Hook Island - Stonehaven Bay - Depths

HMAS *Mermaid* (DHDB 1528212)

Aus 252 [789/2011]

Insert	accompanying block	20° 05'.8 S	148° 54'.3 E
--------	--------------------	-------------	--------------

Aus 254 (plan, Stonehaven Anchorage) [890/2011]

Insert	accompanying block	20° 05'.8 S	148° 54'.3 E
--------	--------------------	-------------	--------------

Aus 825 [632/2011]

Insert	accompanying block	20° 03'.5 S	148° 50'.0 E
--------	--------------------	-------------	--------------

94* AUSTRALIA - QUEENSLAND - Townsville - Ross Creek - Light buoy

Maritime Safety Queensland Notice 17/2012 (AA575119, AA574976, AA574977)

Aus 257 [1239/2011]

Insert	special spar light buoy, <i>Fl. Y. 1-5s</i> , without topmark	19° 15'.496 S	146° 49'.521 E
--------	---	---------------	----------------

95* PAPUA NEW GUINEA - Caution Bay - Depth

HMAS *Mermaid* and *Paluma* (DHDB 1812556)

Aus 379 [NC 17/11/2011]

Insert	depth, <i>15₂m</i> , enclosed by contour	9° 18'.17 S	146° 48'.47 E
--------	---	-------------	---------------

96* PAPUA NEW GUINEA - Tavui Point - Light
National Maritime Safety Authority PNG Notice 54/2011 (AA571586)

Aus 545 [1300/2010]			
Amend	light to <i>Fl.8s 47m 18M</i>	4° 08'.2 S	152° 10'.2 E
Aus 554 [296/2011]			
Amend	light to <i>Fl.8s 47m 18M</i>	4° 08'.2 S	152° 10'.2 E
Aus 680 [414/2010]			
Amend	light to <i>Fl.8s 47m 18M</i>	4° 08'.2 S	152° 10'.2 E

97* AUSTRALIA - TORRES STRAIT - Gannet Passage - Depth
Australian Hydrographic Service (AA577030)

Aus 296 [NC 18/11/2011]			
Insert	depth, 10 ₃ m	10° 35'.315 S	141° 52'.574 E
Delete	depth, 10 ₆ m	10° 35'.31 S	141° 52'.63 E

98* AUSTRALIA - WESTERN AUSTRALIA - Port Hedland - Depths; infrastructure
Port Hedland Port Authority (DHDB 1766820)

Aus 52 [1168/2010]			
Insert	accompanying block A	20° 12'.0 S	118° 36'.5 E
	accompanying block B	20° 19'.0 S	118° 34'.5 E
Aus 53 [1168/2010]			
Insert	accompanying block A	20° 11'.0 S	118° 36'.5 E
	accompanying block B	20° 19'.0 S	118° 34'.5 E

99* AUSTRALIA - WESTERN AUSTRALIA - Delambre Island - Depth
UKHO (AA576607)

Aus 55 [NC 18/11/2011]			
Insert	upright sounding, 12 ₄ m, enclosed by approximate contour	20° 23'.05 S	117° 04'.60 E

100* AUSTRALIA - WESTERN AUSTRALIA - Dampier - Enderby Island - Mooring areas
Department of Transport WA (AA577609, AA577610)

Aus 57 [1130/2011]			
Insert	dashed line with legend, <i>Moorings</i> , between	20° 37'.49 S	116° 33'.20 E
		20° 35'.72 S	116° 34'.28 E
		20° 35'.74 S	116° 34'.73 E
		20° 37'.49 S	116° 33'.85 E
	dashed line with legend, <i>Moorings</i> , between	20° 37'.52 S	116° 30'.70 E
		20° 37'.24 S	116° 28'.68 E
		20° 37'.39 S	116° 28'.66 E
		20° 38'.11 S	116° 30'.69 E
Delete	buoy	20° 35'.7 S	116° 34'.7 E
	buoy	20° 35'.8 S	116° 34'.3 E
	buoy	20° 36'.1 S	116° 34'.2 E
	buoy	20° 36'.3 S	116° 33'.9 E

101* AUSTRALIA - WESTERN AUSTRALIA - Onslow - Port limits
Department of Transport WA (DHDB 1988438)

Aus 64 [34/2012]

Insert	magenta dashed line, between	21° 39'.00 S	114° 57'.74 E
		21° 35'.68 S	114° 56'.15 E
	magenta dashed line, between	21° 29'.45 S	114° 56'.12 E
		21° 20'.92 S	114° 56'.08 E
	magenta dashed line with legend, <i>Ashburton Port Limit</i> , between	21° 35'.33 S	114° 56'.15 E
		21° 29'.45 S	114° 56'.12 E
		21° 29'.45 S	115° 02'.62 E
		21° 33'.24 S	115° 02'.62 E
		21° 38'.82 S	115° 05'.52 E
	magenta legend, <i>Onslow</i> , centred on	21° 28'.7 S	114° 56'.1 E
Delete	magenta dashed line, between	21° 39'.00 S	114° 57'.72 E
		21° 35'.58 S	114° 55'.96 E
	magenta dashed line, between	21° 35'.50 S	114° 55'.96 E
		21° 20'.92 S	114° 56'.08 E
magenta legend, <i>Onslow</i> , centred on	21° 32'.7 S	114° 56'.1 E	

Aus 64 (plan, Onslow)

Insert	magenta dashed line, between	21° 36'.300 S	115° 04'.233 E
		21° 38'.821 S	115° 05'.523 E
	magenta legend, <i>Onslow Port Limit</i> , centred on	21° 37'.50 S	115° 04'.85 E
	magenta legend, <i>Ashburton Port Limit</i> , centred on	21° 37'.50 S	115° 04'.81 E

Aus 328 [1307/2011]

Insert	magenta dashed line with legend, <i>Ashburton Port Limit</i> , between	21° 29'.45 S	114° 56'.12 E
		21° 29'.45 S	115° 02'.62 E
		21° 33'.24 S	115° 02'.62 E
		21° 38'.82 S	115° 05'.52 E

Aus 743 [34/2012]

Insert	magenta dashed line with legend, <i>Onslow Port</i> , between	21° 29'.45 S	114° 56'.12 E	
		21° 20'.92 S	114° 56'.08 E	
	magenta dashed line with legend, <i>Ashburton Port Limit</i> , between	21° 35'.33 S	114° 56'.15 E	
		21° 29'.45 S	114° 56'.12 E	
		21° 29'.45 S	115° 02'.62 E	
		21° 33'.24 S	115° 02'.62 E	
		21° 38'.82 S	115° 05'.52 E	
	Delete	magenta dashed line with legend, <i>Onslow Port</i> , between	21° 35'.50 S	114° 55'.96 E
			21° 20'.92 S	114° 56'.08 E

Aus 744 [1132/2011]

Insert	magenta dashed line with legend, <i>Ashburton Port Limit</i> , between	21° 35'.33 S	114° 56'.15 E	
		21° 29'.45 S	114° 56'.12 E	
		21° 29'.45 S	114° 59'.71 E	
	magenta dashed line with legend, <i>Onslow Port</i> , between	21° 29'.45 S	114° 56'.12 E	
		21° 20'.92 S	114° 56'.08 E	
		21° 20'.92 S	114° 56'.08 E	
	Delete	magenta dashed line with legend, <i>Onslow Port</i> , between	21° 35'.50 S	114° 55'.96 E
			21° 20'.92 S	114° 56'.08 E

102* AUSTRALIA - WESTERN AUSTRALIA - Geraldton - Light
Australian Hydrographic Service (AA575538, AA576657)

Aus 81 [1250/2011]

Delete light 28° 45'.92 S 114° 36'.70 E

Aus 81 (plan, Port of Geraldton)

Delete light 28° 45'.92 S 114° 36'.70 E

103* AUSTRALIA - WESTERN AUSTRALIA - Fremantle - Parmelia Channel - Light buoy

Former Notice - 1342(P)/2011 is cancelled
Fremantle Ports (AA571760)

Aus 117 [904/2011]

Substitute starboard lateral pillar light buoy, *Fl.G.2s No11*, with topmark for light beacon 32° 07'.79 S 115° 42'.12 E

AX 70117 [904/2011]

Substitute starboard lateral pillar light buoy, *Fl.G.2s No11*, with topmark for light beacon 32° 07'.79 S 115° 42'.12 E

104* AUSTRALIA - WESTERN AUSTRALIA - Binningup - Obstruction

Former Notice - 85(T)/2010 is cancelled
Southern Seawater Alliance (AA577264 - AA577268)

Aus 755 [35/2012]

Insert depth, *3.4m*, enclosed by danger circle with legend, *Obstn* 33° 07'.81 S 115° 41'.05 E

AX 0755E [35/2012]

Insert depth, *3.4m*, enclosed by danger circle with legend, *Obstn* 33° 07'.81 S 115° 41'.05 E

105* AUSTRALIA - SOUTH AUSTRALIA - Port Eyre - Depth

Australian Hydrographic Service (AA577860)

Aus 121 (plan, Port Eyre) [NE 18/11/2011]

Substitute accompanying plan 32° 00'.0 S 132° 30'.0 E

106* AUSTRALIA - VICTORIA - Macdonnell Bay - Depth

Jeanes & Sommerville Surveyors Pty Ltd (DHDB 1487980)

Aus 348 (plan, Port Macdonnell) [1075/2011]

Insert depth, *0.1m* 38° 03'.573 S 140° 42'.066 E

107* AUSTRALIA - TASMANIA - Pirates Bay - Light

Former Notice - 947(T)/2011 is cancelled
Marine and Safety Tasmania Notice M3/2012 (AA574989)

Aus 796 [1245/2010]

Amend light to *Fl.Bu.5s* 43° 02'.0 S 147° 56'.7 E

Aus 797 [806/2011]

Amend light to *Fl.Bu.5s* 43° 02'.0 S 147° 56'.7 E

27 January 2012

108* AUSTRALIA - TASMANIA - Robbins Island - Light buoy

Marine and Safety Tasmania Notice M6/2012 (AA577875, AA577242 - AA577245)

Aus 790 [1014/2011]

Insert	port lateral cylindrical light buoy, <i>Fl.R.5s</i> , with topmark	40° 39'.28 S	144° 50'.50 E
--------	--	--------------	---------------

109* AUSTRALIA - VICTORIA - Lakes Entrance - Light buoy

Gippsland Ports (AA572272, AA572273), Victorian Notice 124/2011 (AA565587)

Aus 357 [513/2011]

Insert	special spherical light buoy, <i>Fl(5)Y.20s</i> , without topmark	37° 54'.91 S	147° 57'.94 E
--------	---	--------------	---------------

110(T)/2012 AUSTRALIA - NEW SOUTH WALES - Newcastle - Depth information

Former Notice - 47(T)/2012 is cancelled
Newcastle Port Corporation (AA578691)

Available depths as at 23 January 2012:

<i>Berth</i>	<i>Metres</i>
Western Basin 3	11.3
Western Basin 4	11.3
Eastern Basin 1	11.3
Eastern Basin 2 North of Ch 450	11.6
Eastern Basin 2 South of Ch 450	11.2
Channel Berth	8.3
Dyke 1	12.5
Dyke 2	12.3
Dyke 4	16.5
Dyke 5	16.5
Dyke 6	6.3
Mayfield 4 Ch 27 to 266	12.2
BHP Wharf 6 to Ch 1050	7.3
Kooragang 2	11.3
Kooragang 2 North Dolphin Ch 182 to 228	11.2
Kooragang 2 South Dolphin Ch -92 to 00	11.2
Kooragang 3	12.8
Kooragang 4	16.5
Kooragang 5	16.5
* Kooragang 6	16.2
Kooragang 7	16.1
Kooragang 8	16.5
Kooragang 9	16.3
Kooragang Ship Receiving KSR	7.5
Throsby 1	8.4
Carrington Wharf	To be sounded as and when required
Foreshore Park Berth	5.9
Elgo Wharf	To be sounded as and when required
<i>Channels</i>	
Entrance Approach	17.7
Entrance Channel (18.0m)	18.0
Entrance Channel (17.4m)	17.4
Entrance Channel (16.8m)	16.8
Entrance Channel (16.2m)	16.2
Entrance Channel to Horseshoe	15.2
Horseshoe	15.0
Steelworks Channel to Swinging Basin	15.0
Swinging Basin	15.0
Hunter River South Arm (Kooragang 6 to buoy 16)	15.2
Hunter River South Arm (buoy 16 to buoy 18)	14.9
Basin Cutting	12.8
Basin Area to Eastern & Western Basin Berths	12.3
Basin Area to 1 Throsby	9.4
Stockton Crossing	3.6

* Indicates revised entry.

Chart temporarily affected – Aus 207 – Aus 208

111(T)/2012 AUSTRALIA - QUEENSLAND - Point Danger to Point Lookout - Scientific instruments*Former Notice - 698(T)/2011 is cancelled*

Maritime Safety Queensland Notice 64(T)/2012 (AA578863)

Special light buoys, *F(5)Y.20s*, exist in positions:

28° 10'.89 S 153° 34'.48 E

27° 57'.95 S 153° 26'.57 E

27° 29'.29 S 153° 37'.93 E.

Mariners are not to use these buoys as moorings.

Chart temporarily affected – Aus 230 – Aus 813 – Aus 814**112(T)/2012 AUSTRALIA - QUEENSLAND - Moreton Bay - East Knoll Bypass Channel - Shoaling**

Maritime Safety Queensland Notice 38(T)/2012 (AA578074)

Shoaling, with least depth *6.0m*, exists along the eastern side of the channel between light buoys EK1 (27° 08'.53 S 153° 19'.43 E) and EK2 (27° 08'.48 S 153° 19'.85 E) and south to the Main Channel (27° 10'.0 S 153° 19'.7 E).

Mariners are advised to navigate with caution in the area.

Chart temporarily affected – Aus 236**113(T)/2012 AUSTRALIA - QUEENSLAND - Brisbane River - Petrie Bight - Harbour works completed***Former Notice - 1145(T)/2011 is cancelled*

Maritime Safety Queensland Notice 28(T)/2012 (AA576897)

Cancel this notice on receipt.

Chart formerly affected – Aus 238**114(T)/2012 AUSTRALIA - QUEENSLAND - Brisbane River - Town Reach - Light buoy withdrawn***Former Notice - 49(T)/2012 is cancelled*

Maritime Safety Queensland Notice 40/2012 (AA578072)

Cancel this notice on receipt.

Chart formerly affected – Aus 238**115(T)/2012 AUSTRALIA - QUEENSLAND - Mooloolaba - Shoaling***Former Notice - 52(T)/2012 is cancelled*

Maritime Safety Queensland Notice 55(T)/2012 (AA578725)

Shoaling with a least depth of *2.3m* exists on the port side within the main channel to Mooloolah River in the vicinity of position 26° 40'.74 S 153° 07'.93 E and a least depth of *2.1m*, along the port side of the channel adjacent to No2 light beacon in the vicinity of position 26° 40'.76 S 153° 07'.96 E. Shoaling with a least depth *2.2m*, exists northwest of the western breakwater in the vicinity of position 26° 40'.77 S 153° 07'.89 E and a least depth *2.3m*, exists westnorthwest of the western breakwater in the vicinity of position 26° 40'.79 S 153° 07'.86 E.

Mariners are advised to navigate with caution in the area.

Chart temporarily affected – Aus 235

116(T)/2012 AUSTRALIA - QUEENSLAND - Gladstone - Pipelines*Former Notice - 1206(T)/2011 is cancelled**Date - Until 31 December 2012*

Maritime Safety Queensland Notices 1115(T)/2011, 1132(T)/2011, 57(T)/2012 (AA567581, AA567881, AA578641)

Submarine pipelines, marked by unlit orange buoys and lit special buoys, exist between;

23° 46'.87 S 151° 10'.14 E

23° 46'.69 S 151° 10'.70 E

23° 46'.68 S 151° 11'.06 E

23° 46'.94 S 151° 11'.59 E

23° 47'.06 S 151° 11'.96 E

and

23° 47'.06 S 151° 11'.96 E

23° 46'.77 S 151° 11'.65 E

and

23° 46'.56 S 151° 10'.03 E

23° 46'.65 S 151° 10'.71 E

23° 46'.64 S 151° 10'.88 E

23° 46'.56 S 151° 11'.12 E

23° 46'.38 S 151° 11'.38 E

and

23° 46'.65 S 151° 10'.71 E

23° 46'.31 S 151° 10'.98 E

23° 46'.07 S 151° 11'.07 E

and

23° 46'.18 S 151° 09'.95 E

23° 45'.49 S 151° 10'.34 E

23° 45'.40 S 151° 10'.55 E.

Mariners are advised to navigate with caution in the area.

Chart temporarily affected – Aus 244 – Aus 245**117(T)/2012 AUSTRALIA - QUEENSLAND - Hay Point - Scientific instrument***Date - Until 13 March 2012*

Maritime Safety Queensland Notice 43(T)/2012 (AA578078)

A scientific instrument marked by a special light buoy, Q.Y, exists in position 21° 17'.38 S 149° 17'.82 E.

Chart temporarily affected – Aus 250**118(T)/2012 AUSTRALIA - QUEENSLAND - Whitehaven Bay - Lagoon Rock - Light beacon destroyed***Former Notice - 317(T)/2011 is cancelled*

Maritime Safety Queensland Notice 62(T)/2012 (AA578865)

The west cardinal light beacon, Q(9)15s (20° 16'.03 S 149° 02'.48 E), has been destroyed; a west cardinal light buoy, Q(9)15s, exists in situ.

Chart temporarily affected – Aus 252 – Aus 253 – Aus 824 – Aus 825**119(T)/2012 AUSTRALIA - QUEENSLAND - Airlie Beach - Muddy Bay - Wreck salvaged***Former Notice - 760(T)/2011 is cancelled*

Maritime Safety Queensland Notice 51/2012 (AA578644)

Cancel this notice on receipt.

Chart formerly affected – Aus 252 – Aus 253 – Aus 268

120(T)/2012 AUSTRALIA - QUEENSLAND - Abbot Point - Scientific instrument
Maritime Safety Queensland Notice 46(T)/2012 (AA578863)

Special light buoy, *Fl(5)Y.20s*, exist in position 19° 52'.0 S 148° 06'.0 E.

Mariners are not to use this buoy as a mooring.

Chart temporarily affected – Aus 255

121(T)/2012 AUSTRALIA - QUEENSLAND - Abbot Point - Scientific instrument recovered
Former Notice - 1276(T)/2011 is cancelled
Maritime safety Queensland Notice 58/2011 (AA578681)

Cancel this notice on receipt.

Chart formerly affected – Aus 255

122(T)/2012 PAPUA NEW GUINEA - Port Moresby to Kerema Bay - Seismic survey
Former Notice - 982(T)/2011 is cancelled
Date - Until 31 May 2012
National Maritime Safety Authority PNG Notice 35/2011 (AA556509, AA579038, AA579039)

RV *BGP Prospector* is conducting a survey in an area bounded by the following positions:

9° 23'.23 S 146° 22'.00 E
8° 47'.17 S 145° 52'.44 E
8° 49'.50 S 145° 49'.37 E
8° 34'.01 S 145° 36'.42 E
8° 31'.43 S 145° 39'.30 E
8° 26'.78 S 145° 35'.35 E
8° 19'.98 S 145° 43'.57 E
9° 15'.38 S 146° 30'.49 E.

Chart temporarily affected – Aus 377 – Aus 378 – Aus 379 – AX 60377

123(T)/2012 AUSTRALIA - QUEENSLAND - Karumba - Light beacon withdrawn; light buoy off station
Former Notice - 1051(T)/2008 is cancelled
Maritime Safety Queensland Notice 72(T)/2012 (AA579108)

No 3 light beacon (17° 25'.86 S 140° 43'.66 E) has been withdrawn; the starboard lateral light buoy, *Fl.G.4s*, that exists in situ is off station.

Chart temporarily affected – Aus 6

124(T)/2012 AUSTRALIA - NORTHERN TERRITORY - Darwin - East Arm - Light beacon destroyed
Darwin Port Corporation Notice 2(T)/2012 (AA578762)

The light beacon, *Iso.G.4s* (12° 29'.94 S 130° 53'.19 E) has been destroyed; a special light buoy, *Q.Y.*, exists in situ.

Mariners are advised to navigate with caution in the area.

Chart temporarily affected – Aus 26 – Aus 28 – AX 72026

125(T)/2012 AUSTRALIA - TIMOR SEA - Sahul Banks to Joseph Bonaparte Gulf - Seismic survey

Former Notice - 65(T)/2012 is cancelled

Date - Until 31 March 2012

Albers Group (AA575556)

MV *Voyager Explorer* is conducting a survey in the areas bounded by the following positions:

Area 1

11° 39'.83 S 126° 11'.16 E

11° 51'.58 S 126° 25'.06 E

11° 55'.70 S 126° 25'.03 E

12° 15'.28 S 125° 57'.35 E

11° 55'.90 S 125° 44'.41 E

Area 2

12° 04'.85 S 126° 37'.72 E

12° 18'.70 S 126° 47'.08 E

12° 29'.13 S 126° 35'.71 E

12° 28'.40 S 126° 22'.76 E

12° 17'.24 S 126° 15'.10 E.

Chart temporarily affected – Aus 314 – Aus 315 – Aus 319 – AX 0314F – AX 0315F – AX 0319F

126(T)/2012 AUSTRALIA - WESTERN AUSTRALIA - Port Walcott - Scientific instrument

Date - Until 30 April 2012

Department of Transport WA Notice 13/2012 (AA5782621)

A special light buoy, *Fl(5)Y.20s*, exist in position 20° 34'.28 S 117° 11'.38 E.

Chart temporarily affected – Aus 55 – Aus 56

127(T)/2012 AUSTRALIA - WESTERN AUSTRALIA - Dampier - Mermaid Sound - Obstructions

Former Notice - 911(T)/2009 is cancelled

Dampier Port Authority Notice 1/2012 (AA578115)

Obstructions marked by special light buoys, *Q*, exist in the following positions:

20° 31'.47 S 116° 45'.16 E

20° 31'.96 S 116° 44'.57 E

20° 32'.49 S 116° 44'.51 E

20° 32'.79 S 116° 44'.51 E.

Chart temporarily affected – Aus 57 – Aus 58

128(T)/2012 AUSTRALIA - WESTERN AUSTRALIA - Dampier - Scientific instruments

Date - Until 8 May 2012

Dampier Port Authority Notice 25/2011 (AA578833)

Special light buoys, *Fl.3s*, exist in the following positions:

20° 35'.09 S 116° 40'.50 E

20° 36'.79 S 116° 45'.07 E

20° 38'.19 S 116° 43'.98 E.

Chart temporarily affected – Aus 58 – Aus 59 – Aus 60

129(T)/2012 AUSTRALIA - SOUTH AUSTRALIA - Rapid Bay - Light buoy off station northwestwards

Department of Planning, Transport and Infrastructure SA Notice 4/2012 (AA578839)

The light buoy, *Fl(2)10s*, (35° 28'.82 S 138° 09'.42 E), is off station.

Chart temporarily affected – Aus 780

130(T)/2012 AUSTRALIA - TASMANIA - Wynyard - Harbour works

Date - Until 31 May 2012

Marine and Safety Tasmania Notice M7/2011 (AA578071)

Works associated with the demolition and reconstruction of the wharf (40° 59'.27 S 145° 44'.00 E) are in progress.

Mariners are advised to navigate to the north of the three special light buoys, Q, Y, established at the work site and to navigate with caution in the area.

Chart temporarily affected – Aus 178**131(T)/2012 AUSTRALIA - VICTORIA - Anderson Inlet - Shoaling**

Former Notice - 1300(T)/2009 is cancelled

Victorian Notice 8(T)/2012 (AA577182)

Shoaling exists in the outer entrance channel of the Anderson Inlet entrance bar (38° 39'.0 S 145° 43'.0 E).

Mariners are advised to navigate with caution in the area.

Chart temporarily affected – Aus 801**132(T)/2012 AUSTRALIA - VICTORIA - Port Albert - Light unlit**

Victorian Notice 11(T)/2012 (AA578170)

The light, *Oc.3s 12m 11M* (38° 43'.62 S 146° 39'.00E (WGS84 datum)), is unlit.

Chart temporarily affected – Aus 181 – Aus 357

II

HYDROGRAPHIC REPORTS

Nil Reports

NAVIGATION WARNINGS

The following radio messages have been received during the period to 27 January 2012. Signal copies of these messages may be destroyed. It is recommended that the reprint of Navigational Warnings should be kept in a file or a book divided into areas. Cancellation should be made on receipt of signals and reprints.

Rigs on location other than those listed in the latest Section III summary are the subject of Radio Navigational Warnings. Rigs in transit will not be the subject of Warnings.

AUSCOAST WARNING

- 012 Cancelled.
- 013 Cancelled.
- 014 Cancelled.
- 015 Cancelled.
- 016 McDermott Derrick barge 30 in position 38° 13'·0 S 148° 13'·0 E marked by yellow cylindrical unlit buoys. Vessels are requested to maintain a 3M clearance.
- 017 Cancelled.
- 018 Cancelled.
- 019 Drill rig *Ocean Patriot* in position 12° 07'·2 S 125° 01'·2 E. 2·5M clearance requested.
- 020 Special purpose vessel *Seahorse Standard* conducting sonar survey in an area bounded by 19° 39'·0 S to 20° 05'·0 S and 113° 45'·0 E to 115° 10'·0 E towing sonar sled 2000 yards astern of the vessel. 2·0M clearance requested.
- 021 Cancelled.

NAVAREA X WARNINGS

- 002 Special purpose vessel *Viking II* conducting seismic survey in an area bounded by 11° 55'·0 S to 12° 55'·0 S and 124° 20'·0 E to 126° 00'·0 E. 5·0M clearance requested.

Navigational warnings in force as at 270001UTC JAN 12.**Auscoast**

2011 288 289 290 293 318 319 321 323 328 333 336 337 338 339 340
2012 002 009 016 019 020

Navarea X

2011 018
2012 002

Summary of mobile drilling rigs as at 270001UTC JAN 12.

<i>Name</i>	<i>Position</i>
Stena Clyde	38° 20'·97 S 141° 41'·01 E
Ocean Patriot	12° 07'·20 S 125° 01'·20 E
Ensco 109	12° 40'·20 S 124° 32'·22 E
Transocean Legend	20° 31'·70 S 116° 40'·60 E
Ensco 104	20° 17'·23 S 116° 16'·31 E
Atwood Osprey	20° 24'·51 S 114° 50'·98 E
Nan Hai 6	21° 26'·03 S 114° 01'·95 E
Ocean America	21° 20'·10 S 113° 36'·50 E
Atwood Eagle	19° 44'·70 S 113° 15'·20 E

NAVAREA XIV WARNINGS

- 007 Cancelled.
- 008 Cancelled.

Navarea XIV warnings in force as at 270001UTC JAN 12.

Nil.

AUSTRALIA, SOUTH COAST - THE RIP

LAT 38°18' S LONG 144°37' E

TIDAL STREAM PREDICTIONS (RATES IN KNOTS)

TIME ZONE -1000

POSITIVE (+) DIRECTION 038° NEGATIVE DIRECTION (-) 200°

YEAR 2012

JANUARY

FEBRUARY

MARCH

Slack			Maximum			Slack			Maximum			Slack			Maximum			Slack			Maximum		
Time	Time	Rate	Time	Time	Rate	Time	Time	Rate	Time	Time	Rate	Time	Time	Rate	Time	Time	Rate	Time	Time	Rate	Time	Time	Rate
1 SU ☉	0135 0741 1409 2001	0443 1002 1701 2249	3.9 -4.9 3.6 -4.6	16 MO ☉	0104 0706 1319 1941	0332 0934 1602 2217	4.5 -6.4 4.7 -4.7	1 WE	0224 0801 1457 2124	0511 1044 1815	3.2 -5.0 3.6	16 TH	0205 0749 1435 2119	0431 1036 1727 2342	3.8 -6.5 4.1 -3.7	1 TH ☉	0155 0725 1425 2057	0435 1010 1744 2328	3.3 -5.4 3.9 -3.9	16 FR	0152 0731 1426 2104	0420 1018 1713 2320	3.8 -6.5 4.1 -3.9
2 MO	0214 0811 1448 2051	0512 1040 1752 2340	3.5 -4.7 3.5 -4.2	17 TU	0141 0737 1357 2033	0407 1013 1647 2307	4.2 -6.4 4.5 -4.2	2 TH	0257 0829 1537 2215	0001 0544 1122 1901	-3.8 2.8 -4.7 3.4	17 FR	0247 0833 1530 2219	0521 1127 1827 2219	3.4 -6.1 3.7	2 FR	0226 0754 1459 2138	0502 1045 1825 2138	3.0 -5.2 3.6	17 SA	0234 0814 1514 2156	0510 1110 1807 2156	3.4 -6.0 3.8
3 TU	0253 0841 1530 2147	0549 1120 1843	3.0 -4.5 3.3	18 WE	0219 0813 1442 2131	0447 1058 1741	3.9 -6.2 4.2	3 FR	0335 0904 1622 2311	0047 0626 1204 1951	-3.3 2.4 -4.4 3.1	18 SA	0339 0926 1632 2328	0035 0626 1226 1935	-3.3 3.0 -5.5 3.5	3 SA	0301 0829 1537 2224	0008 0534 1125 1908	-3.5 2.6 -4.8 3.3	18 SU	0326 0903 1608 2255	0010 0616 1209 1908	-3.5 2.9 -5.3 3.5
4 WE	0333 0913 1619 2250	0631 1204 1935 2250	-3.7 2.6 -4.1 3.2	19 TH	0303 0857 1539 2240	0001 0537 1148 1847	-3.6 3.4 -5.9 3.8	4 SA	0422 0948 1714	0137 0728 1253 2046	-2.8 2.0 -4.0 3.0	19 SU	0449 1028 1742	0136 0752 1337 2051	-2.9 2.6 -4.9 3.4	4 SU	0344 0912 1622 2314	0052 0620 1222 1956	-3.1 2.2 -4.4 3.1	19 MO	0437 1004 1711	0107 0736 1319 2018	-3.2 2.5 -4.6 3.2
5 TH	0418 0950 1716 2358	0724 1253 2031	-3.2 2.2 -3.8 3.1	20 FR	0357 0952 1649 2357	0100 0641 1247 2001	-3.1 3.0 -5.4 3.6	5 SU	0011 0524 1041 1810	0235 0844 1402 2143	-2.6 1.8 -3.6 3.1	20 MO	0040 0622 1143 1855	0249 0916 1502 2221	-2.8 2.6 -4.5 3.5	5 MO	0440 1004 1716	0142 0750 2051	-2.9 1.9 -4.0 3.1	20 TU	0000 0610 1123 1825	0214 0854 1440 2143	-3.1 2.4 -4.1 3.1
6 FR	0513 1036 1816	0222 0827 1357 2128	-2.7 2.0 -3.5 3.1	21 SA	0509 1059 1807	0207 0813 1359 2122	-2.8 2.7 -4.9 3.6	6 MO	0111 0644 1144 1909	0339 0950 1534 2241	-2.7 2.0 -3.6 3.4	21 TU	0148 0754 1313 2007	0417 1028 1624 2353	-3.1 2.8 -4.5 3.9	6 TU	0010 0551 1106 1816	0242 0907 1439 2152	-2.8 2.0 -3.7 3.2	21 WE	0106 0739 1304 1943	0344 1006 1605 2311	-3.2 2.7 -3.9 3.3
7 SA	0106 0621 1132 1913	0325 0931 1517 2226	-2.6 1.9 -3.5 3.3	22 SU	0115 0637 1214 1924	0324 0943 1526 2249	-2.7 2.8 -4.8 3.9	7 TU	0208 0759 1253 2008	0439 1047 1643 2334	-3.1 2.4 -4.1 3.8	22 WE ☉	0249 0907 1442 2113	0541 1132 1732	-3.8 3.3 -4.6 2.1	7 WE	0108 0707 1217 1921	0347 1010 1604 2250	-3.1 2.4 -4.0 3.5	22 TH	0210 0817 1434 2055	0519 1112 1716	-3.8 3.3 -4.2 2.5
8 SU	0207 0739 1234 2007	0426 1030 1626 2322	-2.8 2.1 -3.7 3.6	23 MO ☉	0225 0806 1336 2033	0446 1052 1646	-3.1 3.2 -5.0	8 WE ☉	0258 0859 1406 2103	0528 1139 1735	-3.7 3.0 -4.7	23 TH	0342 1004 1553 2212	0100 0651 1231 1830	4.2 -4.5 3.9 -4.7	8 TH ☉	0203 0813 1337 2025	0444 1105 1707 2343	-3.8 3.0 -4.4 3.9	23 FR ☉	0306 0942 1541 2156	0019 0625 1213 1816	3.6 -4.4 3.9 -4.5
9 MO ☉	0259 0846 1340 2056	0519 1123 1718	-3.3 2.5 -4.2	24 TU	0324 0920 1454 2134	0026 0600 1153 1748	4.4 -3.8 3.6 -5.1	9 TH	0342 0947 1514 2155	0021 0610 1225 1822	4.3 -4.5 3.6 -5.2	24 FR	0427 1052 1650 2303	0154 0747 1329 1923	4.5 -4.9 4.3 -4.8	9 FR	0252 0909 1458 2127	0531 1156 1801	-4.6 3.7 -4.9	24 SA	0354 1029 1635 2246	0112 0714 1310 1909	3.8 -4.9 4.4 -4.7
10 TU	0344 0938 1443 2142	0012 0605 1211 1803	4.1 -3.8 3.0 -4.8	25 WE	0414 1019 1602 2227	0135 0706 1250 1841	4.9 -4.4 4.0 -5.1	10 FR	0421 1029 1614 2244	0103 0647 1307 1906	4.6 -5.2 4.2 -5.5	25 SA	0507 1135 1739 2347	0237 0826 1421 2014	4.5 -5.0 4.6 -4.8	10 SA	0337 0958 1606 2223	0029 0613 1243 1849	4.1 -5.4 4.4 -5.2	25 SU	0434 1111 1722 2328	0152 0739 1406 1956	4.0 -5.1 4.7 -4.8
11 WE	0424 1021 1539 2226	0057 0645 1254 1844	4.5 -4.4 3.5 -5.3	26 TH	0458 1109 1700 2316	0229 0809 1343 1932	5.1 -4.8 4.3 -5.0	11 SA	0457 1109 1709 2329	0139 0721 1348 1949	4.7 -5.8 4.7 -5.6	26 SU	0543 1213 1824	0311 0821 1510	4.4 -5.0 4.8 -4.7	11 SU	0418 1044 1704 2313	0111 0651 1328 1936	4.2 -6.1 4.9 -5.2	26 MO	0509 1149 1805	0223 0751 1452 2038	4.0 -5.2 4.9 -4.8
12 TH	0501 1100 1629 2308	0137 0720 1334 1924	4.9 -5.0 4.0 -5.7	27 FR	0539 1153 1752	0312 0852 1436	5.1 -4.9 4.5 -4.8	12 SU	0530 1148 1800	0210 0755 1428	4.6 -6.3 4.9 -5.4	27 MO	0025 0614 1248 1906	0333 0841 1553 2140	4.1 -5.0 4.8 -4.5	12 MO	0457 1129 1757 2357	0149 0729 1411 2021	4.2 -6.6 5.1 -5.1	27 TU	0005 0539 1224 1844	0250 0814 1533 2114	3.9 -5.2 4.9 -4.6
13 FR	0535 1135 1717 2348	0211 0753 1412 2004	5.0 -5.4 4.3 -5.8	28 SA	0000 0615 1233 1840	0349 0847 1525 2112	4.8 -4.8 4.6 -4.5	13 MO	0011 0603 1226 1849	0241 0831 1507 2118	4.4 -6.7 5.0 -5.0	28 TU	0059 0641 1321 1947	0355 0909 1633 2219	3.8 -4.9 4.6 -4.2	13 TU	0535 1213 1845	0225 0808 1455	4.2 -7.0 5.0 -4.9	28 WE	0037 0605 1255 1922	0317 0841 1609 2150	3.7 -5.3 4.8 -4.4
14 SA	0606 1210 1804	0238 0824 1447 2045	5.0 -5.8 4.6 -5.6	29 SU	0040 0649 1309 1925	0414 0909 1611 2159	4.4 -4.7 4.6 -4.2	14 TU	0050 0635 1306 1937	0313 0909 1548 2204	4.2 -6.9 4.8 -4.6	29 WE	0130 0706 1352 2028	0418 0939 1712 2257	3.5 -4.9 4.4 -3.8	14 WE	0037 0613 1257 1931	0301 0848 1538 2149	4.1 -7.0 4.8 -4.5	29 TH	0108 0631 1324 1958	0345 0911 1644 2224	3.4 -5.2 4.5 -4.2
15 SU	0027 0636 1243 1852	0303 0858 1523 2129	4.8 -6.2 4.7 -5.2	30 MO	0116 0719 1342 2010	0432 0938 1655 2243	4.0 -4.5 4.5 -3.9	15 WE ☉	0128 0710 1348 2026	0349 0950 1633 2251	4.0 -6.8 4.5 -4.2	15 TH ☉	0115 0651 1341 2016	0338 0931 1623 2233	4.0 -6.9 4.4 -4.2	15 FR	0138 0659 1354 2034	0413 0943 1717 2300	3.2 -5.1 4.2 -3.9				
				31 TU ☉	0150 0747 1415 2057	0455 1012 1739 2327	3.6 -4.4 4.3 -3.6								31 SA ☉	0210 0730 1427 2110	0442 1018 1753 2337	2.9 -4.9 3.9 -3.7					

THESE PREDICTIONS DO NOT INCLUDE NON-TIDAL FLOWS WHICH CAN AFFECT RATES AND DIRECTION OF THE TIDAL STREAMS

AUSTRALIA, SOUTH COAST - THE RIP

LAT 38°18' S LONG 144°37' E

TIDAL STREAM PREDICTIONS (RATES IN KNOTS)

TIME ZONE -1000

POSITIVE (+) DIRECTION 038° NEGATIVE DIRECTION (-) 200°

YEAR 2012

APRIL				MAY				JUNE															
Slack	Maximum			Slack	Maximum			Slack	Maximum			Slack	Maximum										
Time	Time	Time	Rate	Time	Time	Time	Rate	Time	Time	Time	Rate	Time	Time	Time	Rate								
1 SU	0234 0801 1502 2138	0502 1055 1814	2.9 -5.2 3.6	16 MO	0323 0843 1546 2215	0610 1154 1841	2.8 -5.1 3.3	1 TU	0248 0822 1511 2135	0519 1122 1756	3.1 -5.1 3.8	16 WE	0417 0941 1623 2224	0706 1251 1920	-4.2 2.6 -4.1 2.7	1 FR	0353 0958 1621 2214	0649 1305 1853	-5.6 3.4 -4.1 3.1	16 SA	0600 1207 1813 2313	0846 1442 2058	-3.9 3.0 -3.4 2.0
2 MO	0314 0844 1543 2221	0545 1141 1850	-3.7 2.6 -4.8 3.4	17 TU	0432 0944 1646 2311	0037 0722 1303 1946	-3.8 2.4 -4.4 2.9	2 WE	0332 0912 1557 2216	0009 0612 1219 1841	-4.5 2.9 -4.6 3.5	17 TH	0530 1104 1735 2319	0102 0810 1402 2033	-3.9 2.6 -3.7 2.3	2 SA	0456 1116 1728 2310	0110 0803 1419 2004	-5.3 3.3 -3.6 2.6	17 SU	0705 1318 1928	0246 0948 1548 2159	-3.8 3.2 -3.4 2.0
3 TU	0404 0934 1633 2310	0652 0649 1240 1939	-3.5 2.3 -4.4 3.2	18 WE	0556 1110 1801	0139 0833 1422 2109	-3.5 2.4 -3.8 2.7	3 TH	0426 1013 1654 2304	0056 0725 1328 1937	-4.4 2.8 -4.1 3.1	18 FR	0642 1233 1855	0213 0916 1516 2144	-3.7 2.8 -3.6 2.3	3 SU	0611 1253 1848	0212 0921 1538 2142	-5.2 3.4 -3.4 2.5	18 MO	0009 0803 1421 2035	0406 0948 1649 2253	-4.1 3.5 -3.7 2.2
4 WE	0505 1035 1732	0815 1357 2044	-3.5 2.3 -4.0 3.1	19 TH	0014 0716 1251 1923	0259 0941 1543 2227	-3.5 2.7 -3.7 2.7	4 FR	0531 1129 1802	0151 0845 2053	-4.4 3.0 -3.8 2.8	19 SA	0020 0747 1350 2009	0347 1020 1625 2244	-3.8 3.2 -3.8 2.4	4 MO	0018 0731 1420 2011	0328 1034 1631 2301	-5.2 3.7 -3.6 2.8	19 TU	0109 0855 1514 2130	0502 1146 1742 2343	-4.5 3.8 -4.1 2.5
5 TH	0003 0616 1148 1839	0245 0927 1525 2155	-3.6 2.6 -3.9 3.1	20 FR	0120 0821 1415 2037	0441 1048 1654 2330	-3.8 3.2 -4.0 2.9	5 SA	0000 0644 1305 1920	0256 0956 1609 2220	-4.6 3.3 -3.8 2.7	20 SU	0121 0843 1453 2110	0500 1123 1724 2335	-4.3 3.7 -4.1 2.6	5 TU	0131 0846 1529 2122	0443 1143 1753	-5.7 4.1 -4.1	20 WE	0209 0940 1558 2215	0544 1238 1827	-4.9 4.1 -4.5
6 FR	0100 0726 1316 1951	0350 1031 1639 2301	-4.1 3.2 -4.2 3.3	21 SA	0220 0916 1519 2137	0546 1150 1753	-4.4 3.8 -4.4	6 SU	0103 0757 1436 2038	0406 1100 1716 2329	-5.0 3.9 -4.1 3.0	21 MO	0217 0933 1546 2200	0546 1220 1814	-4.8 4.1 -4.5	6 WE	0241 0951 1626 2221	0545 1253 1847	-6.3 4.5 -4.5	21 TH	0302 1020 1637 2254	0623 1321 1906	-5.3 4.4 -4.9
7 SA	0156 0831 1446 2102	0449 1126 1738 2357	-4.8 3.9 -4.5 3.5	22 SU	0310 1004 1612 2226	0021 0628 1248 1844	3.2 -4.9 4.3 -4.7	7 MO	0207 0906 1546 2145	0509 1200 1813	-5.7 4.3 -4.4	22 TU	0304 1016 1630 2243	0620 1311 1858	2.9 -5.2 4.4 -4.7	7 TH	0343 1046 1714 2312	0054 0638 1432 1934	3.8 -6.7 4.8 -4.8	22 FR	0349 1057 1713 2329	0110 1400 1940	3.2 -5.6 4.6 -5.3
8 SU	0250 0929 1557 2204	0539 1219 1832	-5.6 4.5 -4.8	23 MO	0352 1046 1657 2307	0102 0657 1340 1929	3.4 -5.2 4.6 -4.9	8 TU	0309 1008 1643 2240	0025 0604 1257 1905	3.4 -6.3 4.7 -4.7	23 WE	0345 1055 1710 2321	0102 0652 1358 1937	3.1 -5.4 4.6 -5.0	8 FR	0438 1135 1757	0142 0724 1529 2016	4.1 -6.8 4.9 -5.0	23 SA	0432 1132 1746	0149 0734 2012	3.5 -5.8 4.7 -5.6
9 MO	0341 1024 1656 2257	0046 0625 1310 1921	3.7 -6.3 4.9 -5.0	24 TU	0427 1124 1738 2344	0138 0720 1429 2008	3.5 -5.4 4.8 -4.9	9 WE	0404 1103 1732 2327	0114 0652 1354 1951	3.8 -6.8 4.8 -4.9	24 TH	0422 1130 1745 2356	0140 0722 1434 2012	3.3 -5.7 4.7 -5.1	9 SA	0000 0527 1218 1836	0228 0809 1608 2054	4.1 -6.6 4.8 -5.1	24 SU	0001 0512 1207 1817	0225 0810 1500 2042	3.7 -6.0 4.7 -5.8
10 TU	0428 1115 1746 2343	0132 0708 1359 2007	3.9 -6.8 5.0 -5.0	25 WE	0458 1159 1815	0211 0747 1507 2044	3.5 -5.6 4.8 -4.9	10 TH	0453 1152 1817	0158 0737 2033	4.1 -7.0 4.8 -4.9	25 FR	0456 1203 1818	0216 0754 2044	3.4 -5.8 4.7 -5.2	10 SU	0045 0614 1258 1913	0315 0854 1631 2131	3.9 -6.1 4.4 -5.1	25 MO	0032 0553 1242 1846	0259 0847 1522 2112	3.8 -6.0 4.5 -6.1
11 WE	0512 1204 1833	0212 0750 1446 2049	4.1 -7.1 4.9 -4.9	26 TH	0018 0527 1231 1850	0245 0816 1540 2117	3.5 -5.6 4.7 -4.8	11 FR	0011 0538 1236 1858	0240 0820 1552 2112	4.1 -7.0 4.6 -4.9	26 SA	0029 0530 1235 1849	0251 0827 1535 2115	3.4 -5.9 4.6 -5.3	11 MO	0129 0659 1338 1949	0403 0943 1635 2209	3.7 -5.6 4.0 -5.0	26 TU	0103 0634 1317 1913	0332 0928 1546 2145	3.9 -5.8 4.3 -6.3
12 TH	0024 0553 1249 1916	0251 0833 1531 2131	4.1 -7.1 4.6 -4.7	27 FR	0050 0556 1301 1923	0316 0847 1610 2149	3.3 -5.7 4.5 -4.8	12 SA	0054 0620 1317 1937	0322 0904 1610 2152	4.0 -6.6 4.4 -4.8	27 SU	0100 0605 1308 1919	0323 0902 1557 2146	3.4 -5.8 4.4 -5.4	12 TU	0213 0746 1419 2024	0456 1037 1710 2250	3.4 -5.0 3.6 -4.8	27 WE	0136 0717 1354 1940	0407 1012 1616 2221	3.9 -5.5 4.0 -6.5
13 FR	0104 0633 1332 1958	0329 0917 1614 2213	4.0 -6.9 4.3 -4.5	28 SA	0121 0627 1332 1954	0347 0920 1638 2222	3.2 -5.6 4.2 -4.7	13 SU	0138 0701 1356 2015	0408 0951 1643 2234	3.6 -6.1 4.0 -4.7	28 MO	0131 0642 1342 1948	0354 0941 1620 2220	3.4 -5.7 4.1 -5.5	13 WE	0259 0839 1505 2059	0551 1136 1757 2335	3.1 -4.5 3.1 -4.5	28 TH	0211 0804 1434 2009	0447 1102 1651 2302	3.8 -5.1 3.5 -6.6
14 SA	0144 0713 1414 2040	0413 1003 1658 2257	3.7 -6.5 4.0 -4.3	29 SU	0153 0701 1405 2026	0416 0957 1702 2257	3.0 -5.4 4.0 -4.6	14 MO	0224 0745 1437 2054	0501 1044 1725 2318	3.2 -5.4 3.7 -4.5	29 TU	0203 0723 1418 2017	0428 1025 1648 2255	3.3 -5.4 3.9 -5.6	14 TH	0351 0940 1558 2138	0648 1235 1853	3.0 -4.1 2.6	29 FR	0253 0856 1520 2043	0536 1156 1736 2348	3.7 -4.6 3.0 -6.5
15 SU	0229 0755 1457 2125	0505 1055 1746 2345	3.2 -5.9 3.7 -4.0	30 MO	0226 0740 1442 2059	0449 1039 1730 2333	2.8 -5.2 3.7 -4.6	15 TU	0315 0836 1525 2136	0602 1144 1816	2.8 -4.7 3.2	30 WE	0239 0808 1458 2047	0510 1115 1723 2335	3.2 -5.1 3.5 -5.7	15 FR	0237 0453 1052 1700 2222	0026 0746 1336 1954	-4.2 3.0 -3.7 2.2	30 SA	0345 0958 1617 2128	0638 1256 1832	3.4 -4.2 2.5
												31 TH	0321 0902 1546 2122	0602 1213 1808	3.1 -4.6 3.1								

THESE PREDICTIONS DO NOT INCLUDE NON-TIDAL FLOWS WHICH CAN AFFECT RATES AND DIRECTION OF THE TIDAL STREAMS

AUSTRALIA, SOUTH COAST - THE RIP

LAT 38°18' S LONG 144°37' E

TIDAL STREAM PREDICTIONS (RATES IN KNOTS)

TIME ZONE -1000

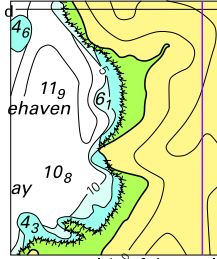
POSITIVE (+) DIRECTION 038° NEGATIVE DIRECTION (-) 200°

YEAR 2012

JULY				AUGUST				SEPTEMBER															
Slack	Maximum			Slack	Maximum			Slack	Maximum			Slack	Maximum										
Time	Time	Rate		Time	Time	Rate		Time	Time	Rate		Time	Time	Rate									
1 SU	0038 0431 1107 1656 2233	-5.9 3.5 -3.4 2.6		16 MO	0610 0912 1241 1506 1831 2115 2306	-3.9 3.1 -3.1 1.8		1 WE	0233 0643 1333 1918	-5.4 3.3 -3.1 2.7		16 TH	0325 0659 1346 1955	-3.6 3.2 -3.2 2.2		1 SA	0151 0838 1505 2132	-4.7 3.7 -4.2 3.5		16 SU	0122 0759 1428 2047	-4.0 3.6 -4.3 3.6	
2 MO	0548 1237 1816 2344	0141 0851 1505 2110	-5.6 3.4 -3.1 2.4	17 TU	0711 1342 1948	0306 1012 1610 2213	-3.9 3.2 -3.2 1.9	2 TH	0034 0757 1440 2042	0359 1112 1705 2315	-5.3 3.7 -3.6 3.1	17 FR	0034 0756 1435 2052	0432 1118 1714 2324	-3.9 3.6 -3.9 2.7	2 SU	0315 0942 1557 2226	0556 1316 1859 2226	-4.9 4.1 -4.8	17 MO	0243 0901 1514 2135	0544 1210 1754 2338	-4.5 3.9 -5.1
3 TU	0709 1400 1943	0258 1011 1622 2234	-5.4 3.5 -3.3 2.8	18 WE	0008 0806 1435 2051	0417 1109 1706 2308	-4.1 3.5 -3.7 2.3	3 FR	0159 0904 1537 2149	0511 1245 1813	-5.4 4.1 -4.2	18 SA	0150 0850 1519 2138	0524 1206 1755 2138	-4.5 3.9 -4.6	3 MO	0420 1037 1641 2314	0057 0652 1408 1947	4.0 -5.0 4.3 -5.2	18 TU	0350 0958 1557 2220	0025 1254 1832	4.3 -4.9 4.1 -5.8
4 WE	0825 1508 2101	0421 1130 1730 2338	-5.6 3.9 -3.7 3.3	19 TH	0116 0855 1521 2140	0510 1159 1753 2357	-4.5 3.8 -4.2 2.7	4 SA	0319 1003 1625 2245	0015 0610 1352 1910	3.6 -5.5 4.5 -4.8	19 SU	0300 0940 1559 2218	0011 0610 1248 1832	3.4 -5.0 4.3 -5.3	4 TU	0514 1125 1720 2356	0155 0746 1514 2003	4.4 -5.1 4.3 -5.4	19 WE	0447 1050 1637 2304	0109 0718 1333 1910	4.8 -5.1 4.2 -6.4
5 TH	0217 0930 1604 2205	0529 1303 1830	-6.0 4.3 -4.3	20 FR	0223 0939 1601 2221	0554 1245 1833	-4.9 4.2 -4.8	5 SU	0425 1055 1708 2334	0111 0703 1441 1955	4.0 -5.5 4.6 -5.2	20 MO	0400 1028 1635 2255	0053 0653 1324 1905	4.0 -5.4 4.5 -5.9	5 WE	0601 1207 1755	0251 0835 2026	4.6 -5.1 -5.5	20 TH	0539 1135 1716 2348	0152 0803 1407 1948	5.2 -5.1 4.2 -6.8
6 FR	0327 1026 1651 2300	0034 0624 1419 1921	3.7 -6.2 4.7 -4.8	21 SA	0322 1021 1638 2257	0635 1325 1907	-5.4 4.5 -5.3	6 MO	0521 1143 1747	0206 0754 1522 2020	4.2 -5.4 4.6 -5.4	21 TU	0454 1113 1710 2331	0134 0736 1357 1938	4.5 -5.6 4.5 -6.4	6 TH	0035 0645 1244 1825	0337 0918 1538 2055	4.7 -5.0 4.0 -5.5	21 FR	0628 1216 1755	0845 1442 2028	-4.9 -4.2 -6.9
7 SA	0428 1115 1733 2349	0126 0713 1509 2003	4.0 -6.2 4.9 -5.2	22 SU	0413 1101 1712 2330	0122 0714 1358 1938	3.7 -5.7 4.6 -5.8	7 TU	0017 0641 1226 1823	0258 1147 1552 2048	4.3 -5.3 4.3 -5.4	22 WE	0544 1155 1743	0213 0818 2012	4.9 -5.5 4.3 -6.8	7 FR	0110 0726 1317 1852	0420 0958 1603 2127	4.6 -4.8 3.7 -5.5	22 SA	0031 0714 1253 1833	0315 0927 1518 2109	5.1 -4.6 4.1 -6.9
8 SU	0523 1200 1812	0217 0801 1548 2037	4.1 -6.0 4.7 -5.3	23 MO	0500 1140 1743	0200 0753 1426 2009	4.0 -5.9 4.6 -6.2	8 WE	0057 0657 1305 1855	0348 0933 1612 2120	4.3 -5.1 4.0 -5.4	23 TH	0008 0632 1234 1816	0251 0900 1457 2048	5.0 -5.2 4.2 -7.0	8 SA	0144 0807 1349 1918	0457 1036 1632 2201	4.4 -4.4 3.4 -5.4	23 SU	0113 0759 1329 1914	0358 1009 1557 2154	4.8 -4.2 4.0 -6.6
9 MO	0034 0613 1242 1848	0307 0848 1618 2109	4.1 -5.6 4.4 -5.3	24 TU	0003 0546 1218 1813	0236 0833 1452 2040	4.3 -5.8 4.5 -6.6	9 TH	0135 0741 1342 1924	0435 1019 1634 2155	4.2 -4.8 3.6 -5.3	24 FR	0046 0719 1312 1849	0329 0944 1531 2128	4.9 -4.9 4.0 -7.1	9 SU	0216 0848 1420 1946	0537 1115 1704 2236	4.2 -4.1 3.0 -5.1	24 MO	0157 0845 1408 1957	0443 1054 1643 2244	4.5 -4.0 3.7 -6.1
10 TU	0116 0701 1322 1922	0357 0939 1635 2145	3.9 -5.2 4.0 -5.2	25 WE	0036 0631 1255 1841	0311 0915 1519 2115	4.5 -5.6 4.2 -6.8	10 FR	0211 0826 1417 1951	0518 1103 1706 2232	4.1 -4.5 3.3 -5.1	25 SA	0127 0806 1349 1926	0411 1029 1609 2212	4.7 -4.5 3.8 -6.9	10 MO	0250 0929 1454 2020	0616 1155 1741 2316	3.9 -3.7 2.7 -4.7	25 TU	0241 0933 1454 2045	0533 1142 1741 2339	4.1 -3.7 3.3 -5.5
11 WE	0157 0748 1403 1954	0447 1031 1659 2223	3.8 -4.8 3.5 -5.1	26 TH	0110 0717 1333 1910	0347 1000 1550 2152	4.5 -5.2 3.9 -7.0	11 SA	0249 0913 1452 2019	0603 1147 1742 2311	3.9 -4.0 2.8 -4.9	26 SU	0211 0854 1428 2007	0458 1116 1654 2300	4.3 -4.1 3.5 -6.5	11 TU	0326 0913 1534 2101	0658 1238 1837 2101	3.5 -3.3 2.3	26 WE	0331 1027 1554 2144	0630 1235 1902 2144	3.8 -3.4 2.8
12 TH	0238 0837 1444 2025	0536 1124 1736 2303	3.6 -4.5 3.1 -4.8	27 FR	0147 0804 1412 1942	0427 1046 1627 2234	4.3 -4.8 3.6 -7.0	12 SU	0329 1003 1531 2052	0649 1232 1828 2355	3.6 -3.6 2.4 -4.5	27 MO	0302 0948 1516 2056	0553 1207 1751 2356	3.9 -3.7 3.0 -6.0	12 WE	0408 1100 1625 2152	0003 0743 1326 1945	-4.2 3.2 -3.0 2.0	27 TH	0429 1127 1717 2301	0045 0735 1336 2024	-4.7 3.5 -3.2 2.7
13 FR	0321 0931 1527 2056	0627 1214 1820 2349	3.4 -4.1 2.7 -4.5	28 SA	0230 0856 1455 2020	0516 1138 1712 2322	4.0 -4.4 3.2 -6.8	13 MO	0413 1057 1618 2133	0738 1322 1925	3.4 -3.1 2.0	28 TU	0400 1050 1619 2154	0658 1303 1911	3.6 -3.4 2.6	13 TH	0457 1151 1731 2252	0100 0836 1422 2052	-3.7 3.1 -2.9 2.0	28 FR	0539 1233 1851	0858 1452 2138	3.2 -3.2 2.9
14 SA	0412 1031 1616 2132	0719 1307 1912	3.3 -3.6 2.2	29 SU	0323 0955 1546 2108	0615 1232 1808	3.7 -4.0 2.7	14 TU	0504 1154 1721 2224	0047 0831 1418 2031	-4.1 3.2 -2.8 1.8	29 WE	0507 1158 1745 2306	0102 0809 1409 2042	-5.4 3.3 -3.3 2.4	14 FR	0553 1245 1845	0226 0934 2153	-3.4 3.1 2.4	29 SA	0039 0658 1340 2009	0330 1032 1634 2247	-3.8 3.3 -3.6 3.4
15 SU	0509 1135 1716 2214	0039 0815 1403 2012	-4.2 3.2 -3.2 1.9	30 MO	0428 1105 1654 2208	0016 0723 1333 1926	-6.4 3.3 -3.7 2.3	15 WE	0601 1251 1840 2325	0157 0928 1521 2134	-3.7 3.1 -2.9 1.9	30 TH	0620 1307 1920	0221 0933 2159	-4.9 3.3 -3.4 2.7	15 SA	0001 0655 1338 1951	0349 1030 1624 2248	-3.6 3.3 -3.6 2.9	30 SU	0212 0818 1442 2111	0449 1148 1755 2351	-4.0 3.6 -4.3 4.1
				31 TU	0544 1221 1819 2320	0122 0840 1446 2104	-5.9 3.2 -3.5 2.2						31 FR	0035 0735 1412 2038	0350 1106 1702 2307	-4.7 3.5 -4.0 3.2							

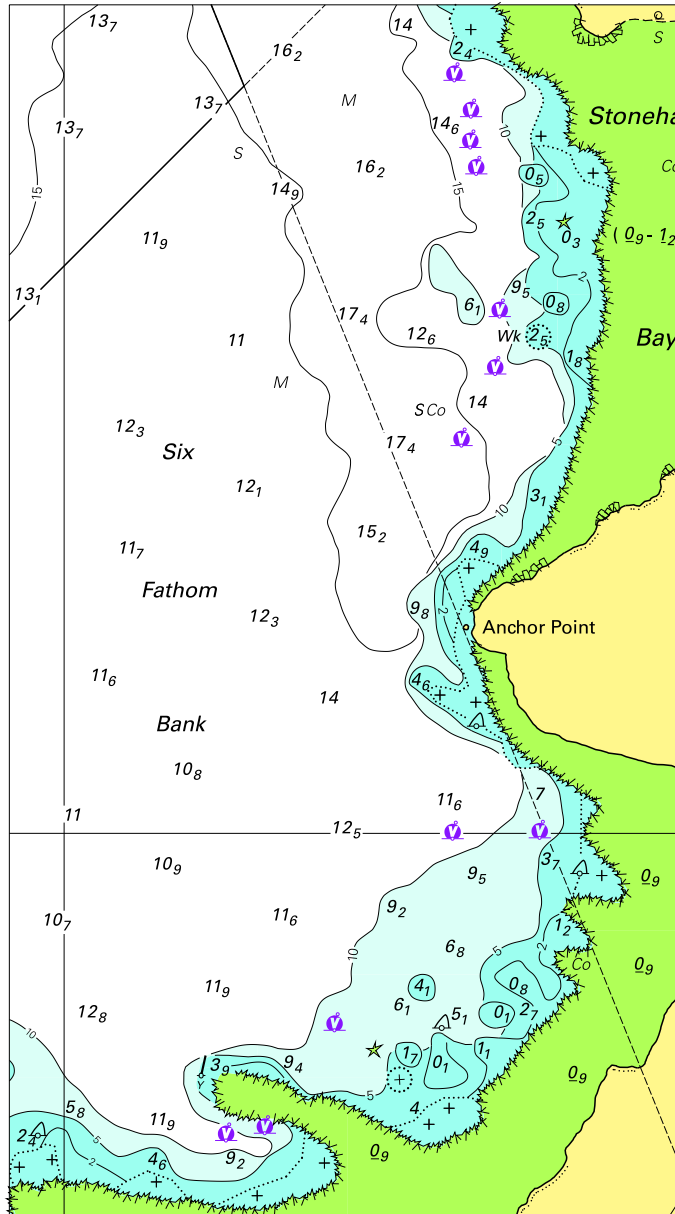
THESE PREDICTIONS DO NOT INCLUDE NON-TIDAL FLOWS WHICH CAN AFFECT RATES AND DIRECTION OF THE TIDAL STREAMS

To accompany Australian Notice to Mariners 93/2012



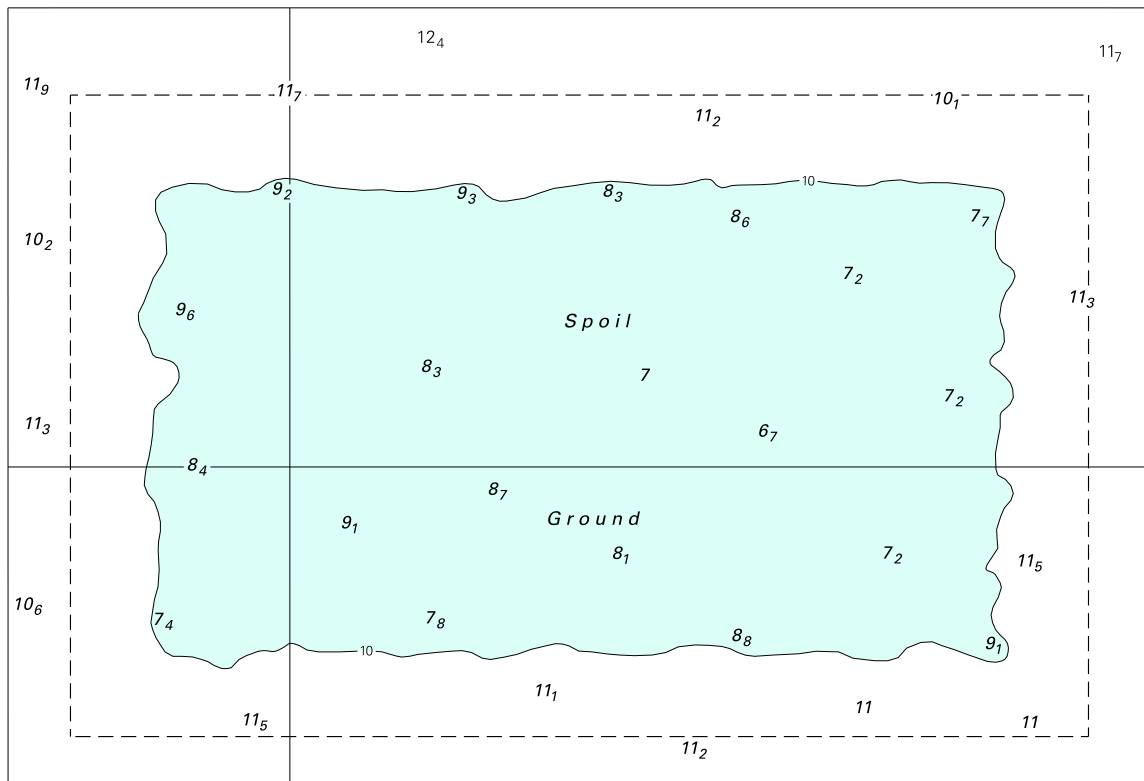
© Commonwealth of Australia 2012
Block for chart Aus 252
(27.6 x 33.6mm)

To accompany Australian Notice to Mariners 93/2012



© Commonwealth of Australia 2012 (89.1 x 160.5mm)
Block for Chart Aus 254

To accompany Australian Notice to Mariners 98/2012

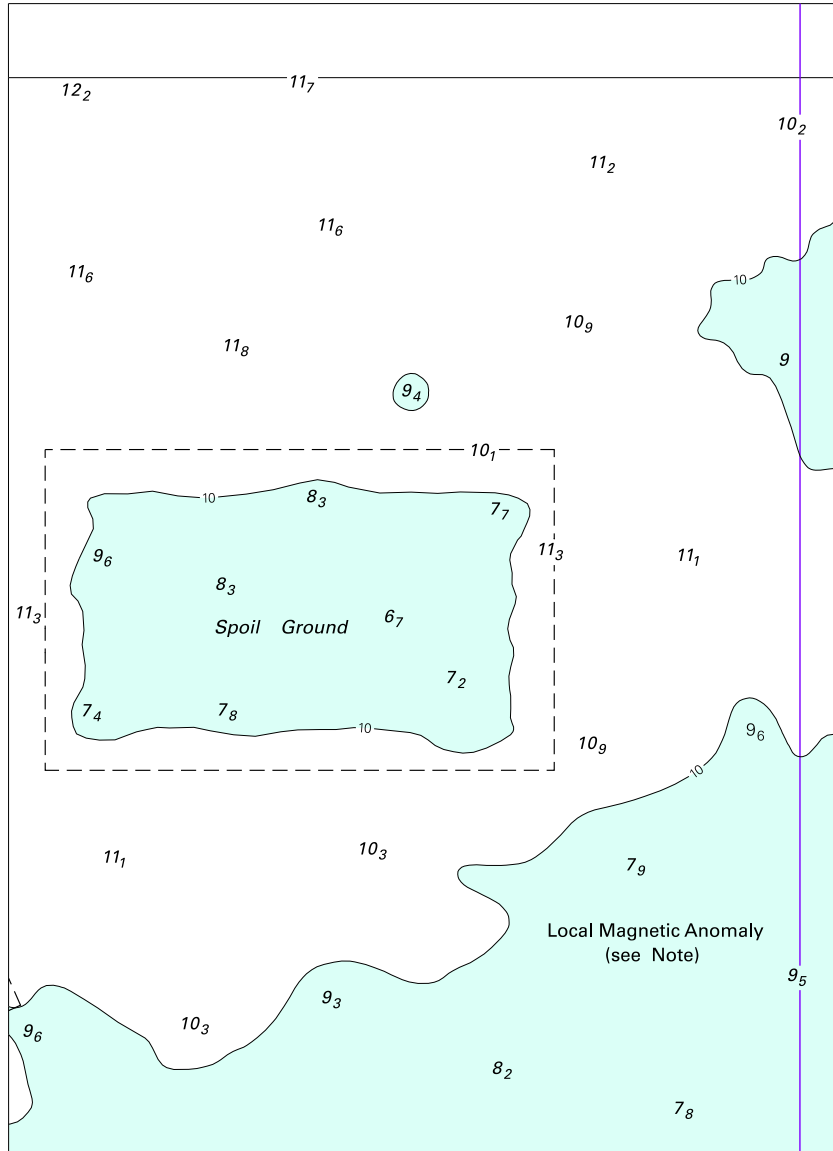


Block A for chart Aus 52

© Commonwealth of Australia 2012

(151.3 x 102.7mm)

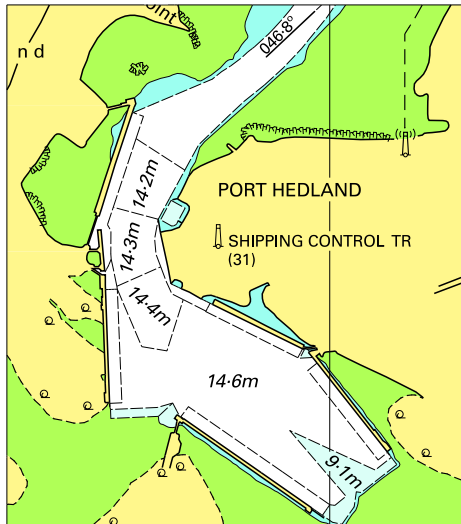
To accompany Australian Notice to Mariners 98/2012



Block A for chart Aus 53 © Commonwealth of Australia 2012

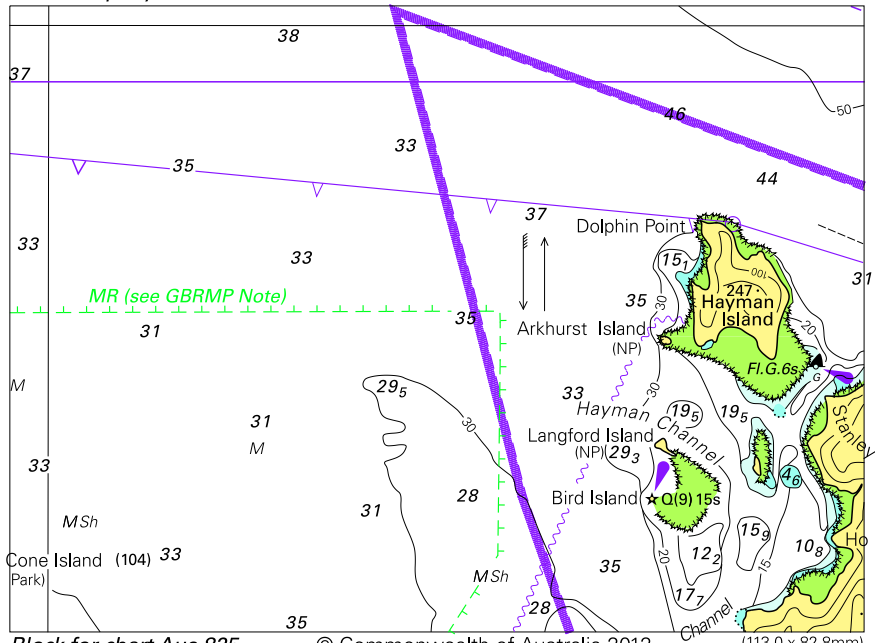
(109.9 x 152.1mm)

To accompany Australian Notice to Mariners 98/2012



© Commonwealth of Australia 2012
Block B for chart Aus 53 (60.5 x 68.8mm)

To accompany Australian Notice to Mariners 93/2012

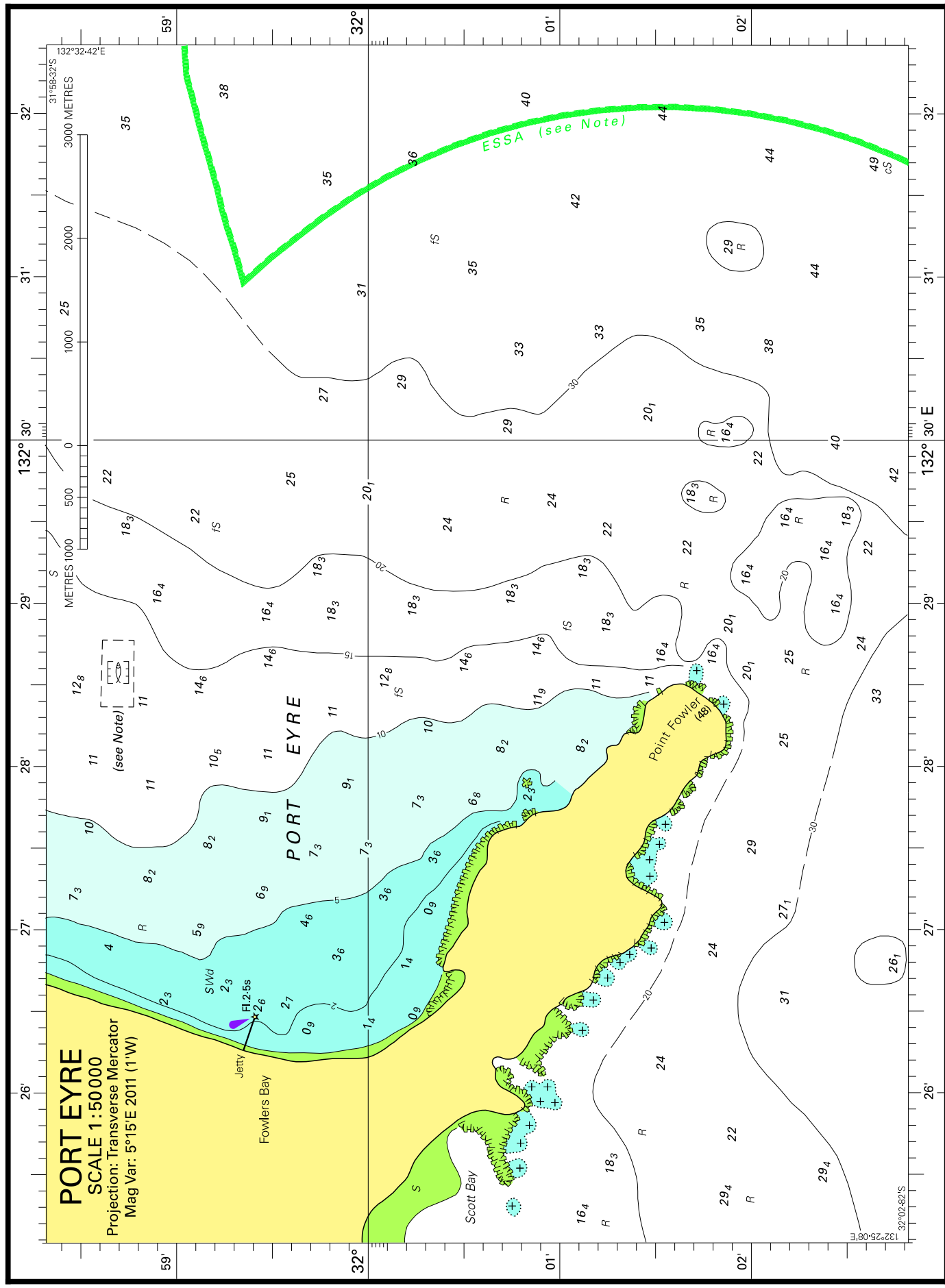


Block for chart Aus 825

© Commonwealth of Australia 2012

(113.0 x 82.8mm)

To accompany Australian Notice to Mariners 105/2012



Block for chart Aus121

© Commonwealth of Australia 2012

(231-1 x 166-4mm)