




13 January 2012

Edition 1

Australian Notices to Mariners are the authority for correcting Australian Charts and Publications

---

# AUSTRALIAN NOTICES TO MARINERS

Notices 28 – 85 

## List of Temporary and Preliminary Notices in force

Published fortnightly by the Australian Hydrographic Service

Commodore R. NAIRN RAN  
*Hydrographer of Australia*

---

### SECTIONS.

- I. [Australian Notices to Mariners, including blocks and notes.](#)
- II. [Hydrographic Reports.](#)
- III. [Navigational Warnings.](#)

### SUPPLEMENTS.

- I. [Tracings](#)
- II. [Cumulative List of Australian Notices to Mariners.](#)
- III. [Cumulative List of Temporary and Preliminary Australian Notices to Mariners.](#)
- IV. [Temporary and Preliminary Notices in force.](#)
- V. [Amendments to Admiralty List of Lights and Fog Signals \(Vol K\), Radio Signals \(NP 281\(2\), 282, 283\(2\), 285, 286\(4\)\) and Sailing Directions \(NP 9, 13, 14, 15, 33, 34, 35, 36, 39, 44, 51, 60, 61, 62, 100, 136\).](#)

---

© Commonwealth of Australia 2012

This work is copyright. Apart from any use permitted under the Copyright Act 1968, no part may be reproduced by any process, adapted, communicated or commercially exploited without prior written permission from The Commonwealth represented by the Australian Hydrographic Service.

## IMPORTANT NOTICE

This edition of Notices to Mariners includes all significant information affecting AHS products which the AHS has become aware of since the last edition. All reasonable efforts have been made to ensure the accuracy and completeness of the information, including third party information, on which these updates are based. The AHS regards third parties from which it receives information as reliable, however the AHS cannot verify all such information and errors may therefore exist. The AHS does not accept liability for errors in third party information.

---

## GENERAL INSTRUCTIONS

The substance of these notices should be inserted on the charts affected.

Bearings are referred to the true compass and are reckoned clockwise from North; those relating to lights are given as seen by an observer from seaward. Positions quoted in permanent notices relate to the horizontal datum for the chart(s). When preliminary or temporary notices affect multiple charts, positions will be provided in relation to only one horizontal datum and that datum will be specified. When the multiple charts do not have a common horizontal datum, mariners will be required to adjust the position(s) for those charts not on the specified datum. The range quoted for a light is its nominal range. Depths are with reference to the chart datum of each chart. Heights are above mean high water springs or mean higher high water, as appropriate.

The capital letter (P) or (T) after the number of any notice denotes a preliminary or temporary notice respectively, which are contained separately at the end of the permanent notices. A star (\*) adjacent to the number of a notice indicates that the notice is based on original information.

---

## REPORTING OF DANGERS

Mariners are particularly requested to notify the AUSTRALIAN HYDROGRAPHIC SERVICE, Locked Bag 8801 Wollongong, NSW 2500 (Fax 02-4223 6599, e-mail [Hydro.NTM@defence.gov.au](mailto:Hydro.NTM@defence.gov.au) or, alternatively by filling in and submitting the [Hydrographic Notes](#) forms located on the web site – [www.hydro.gov.au](http://www.hydro.gov.au)), immediately on the discovery of new dangers or suspected dangers to navigation. For changes or defects in aids to navigation notify AusSAR (Fax 02-6230 6868 or email [rccaus@amsa.gov.au](mailto:rccaus@amsa.gov.au)).

---

## AUTHORISED USE

Copies of Australian notices are available free of charge from the Australian Hydrographic Service (AHS) website ([www.hydro.gov.au](http://www.hydro.gov.au)) and through the eNotices (email) service ([www.hydro.gov.au/enotices/enotices.htm](http://www.hydro.gov.au/enotices/enotices.htm)).

Individual Notices may be copied for the purpose of inserting Notice substance on official charts and publications. Paper copies may be printed by chart agents and distributed to customers on a cost recovery basis. Participating chart agents are listed on the AHS website as providing a 'Paper Notices to Mariners' service ([www.hydro.gov.au/prodserv/distributors/distributors.htm](http://www.hydro.gov.au/prodserv/distributors/distributors.htm)). Copies of the notices may not be sold for profit without prior written agreement.

## NUMERICAL INDEX OF NOTICES TO MARINERS

### Edition No 1

Notices	Aus Chart, INT Chart, BA Pubs
28.....	Aus 129, 674, 777, 5000, 5001, NP 283(2)
29.....	Aus 262, 830, AX 6027S, 63262
30.....	Aus 292, 293, 299
31.....	Aus 14
32.....	Aus 24, 27
33.....	Aus 62, 742
34.....	Aus 64, 743
35.....	Aus 115, 755, AX 0755E
36.....	Aus 499, 450, INT 9033, 9035
37.....	Aus 122
38.....	Aus 343, 444, 776, AX 0343E, 0776E
39.....	Aus 134, 777, 778
40.....	Aus 136
41.....	Aus 136, 778
42.....	Aus 444, 4727, 4728, INT 727, 728
43.....	Aus 125
44.....	Aus 143, 158
45(T).....	Aus 200, 201, AX 6201F
46(T).....	Aus 200, 201, AX 6201F, 63200
47(T).....	Aus 207, 208
48(T).....	Aus 235, 236, 237, 238, 814, 815
49(T).....	Aus 238
50(T).....	Aus 238
51(T).....	Aus 236
52(T).....	Aus 235
53(T).....	Aus 244, 245, 246
54(T).....	Aus 249, 250
55(T).....	Aus 249, 250
56(T).....	Aus 255, 826
57(T).....	Aus 256, 257
58(T).....	Aus 292, 293, 296, 299, 376, 700, 839
59(T).....	Aus 293, 299
60(T).....	Aus 4
61(T).....	Aus 4
62(T).....	Aus 24, 27, 28
63(T).....	Aus 24, 26, 28, AX 72026
64(T).....	Aus 310, 311, 4721, INT 721, AX 0310F, 0311F, 4721F
65(T).....	Aus 314, 315, 319, AX 0314F, 0315F, 0319F
66(T).....	Aus 314, 319, AX 0314F, 0319F
67(T).....	Aus 40, 732, 733
68(T).....	Aus 55, 57, 740, 741
69(T).....	Aus 64, 328, 743
70(T).....	Aus 332, 751
71(T).....	Aus 133
72(T).....	Aus 130, 137
73(T).....	Aus 173, 794, 795
74(T).....	Aus 173, 795
75(T).....	Aus 143, 349, 788
76(T).....	Aus 143, 158
77(T).....	Aus 143, 158
78(T).....	Aus 153, 157
79(T).....	Aus 153, 157
80(T).....	Aus 143
81(T).....	Aus 181
82(T).....	Aus 181, 182
83(T).....	Aus 357, 487, 4644, INT 644
84(T).....	Aus 4601, INT 601
85(T).....	Temporary and Preliminary Notices

## NUMERICAL INDEX OF CHARTS AFFECTED

## Edition No 1

Aus Chart	Notices	Aus Chart	Notices
Aus 4.....	60(T), 61(T)	Aus 376 .....	58(T)
Aus 14.....	31	Aus 444 .....	38, 42
Aus 24.....	32, 62(T), 63(T)	Aus 449 .....	36
Aus 26.....	63(T)	Aus 450 .....	36
Aus 27.....	32, 62(T)	Aus 487 .....	83(T)
Aus 28.....	62(T), 63(T)	Aus 674 .....	28
Aus 40.....	67(T)	Aus 700 .....	58(T)
Aus 55.....	68(T)	Aus 732 .....	67(T)
Aus 57.....	68(T)	Aus 733 .....	67(T)
Aus 62.....	33	Aus 740 .....	68(T)
Aus 64.....	34, 69(T)	Aus 741 .....	68(T)
Aus 115.....	35	Aus 742 .....	33
Aus 122.....	37	Aus 743 .....	34, 69(T)
Aus 125.....	43	Aus 751 .....	70(T)
Aus 129.....	28	Aus 755 .....	35
Aus 130.....	72(T)	Aus 776 .....	38
Aus 133.....	71(T)	Aus 777 .....	28, 39
Aus 134.....	39	Aus 778 .....	39, 41
Aus 136.....	40, 41	Aus 788 .....	75(T)
Aus 137.....	72(T)	Aus 794 .....	73(T)
Aus 143.....	44, 75(T), 76(T), 77(T), 80(T)	Aus 795 .....	73(T), 74(T)
Aus 153.....	78(T), 79(T)	Aus 814 .....	48(T)
Aus 157.....	78(T), 79(T)	Aus 815 .....	48(T)
Aus 158.....	44, 76(T), 77(T)	Aus 826 .....	56(T)
Aus 173.....	73(T), 74(T)	Aus 830 .....	29
Aus 181.....	81(T), 82(T)	Aus 839 .....	58(T)
Aus 182.....	82(T)	Aus 4601 .....	84(T)
Aus 200.....	45(T), 46(T)	Aus 4644 .....	83(T)
Aus 201.....	45(T), 46(T)	Aus 4721 .....	64(T)
Aus 207.....	47(T)	Aus 4727 .....	42
Aus 208.....	47(T)	Aus 4728 .....	42
Aus 235.....	48(T), 52(T)	Aus 5000 .....	28
Aus 236.....	48(T), 51(T)	Aus 5001 .....	28
Aus 237.....	48(T)	AX 0310F.....	64(T)
Aus 238.....	48(T), 49(T), 50(T)	AX 0311F.....	64(T)
Aus 244.....	53(T)	AX 0314F.....	65(T), 66(T)
Aus 245.....	53(T)	AX 0315F.....	65(T)
Aus 246.....	53(T)	AX 0319F.....	65(T), 66(T)
Aus 249.....	54(T), 55(T)	AX 0343E .....	38
Aus 250.....	54(T), 55(T)	AX 0755E .....	35
Aus 255.....	56(T)	AX 0776E .....	38
Aus 256.....	57(T)	AX 4721F.....	64(T)
Aus 257.....	57(T)	AX 6027S .....	29
Aus 262.....	29	AX 6201F.....	45(T), 46(T)
Aus 292.....	30, 58(T)	AX 63200.....	46(T)
Aus 293.....	30, 58(T), 59(T)	AX 63262.....	29
Aus 296.....	58(T)	AX 72026.....	63(T)
Aus 299.....	30, 58(T), 59(T)		
Aus 310.....	64(T)		
Aus 311.....	64(T)	INT Chart	Notices
Aus 314.....	65(T), 66(T)	INT 601 .....	84(T)
Aus 315.....	65(T)	INT 644 .....	83(T)
Aus 319.....	65(T), 66(T)	INT 721 .....	64(T)
Aus 328.....	69(T)	INT 727 .....	42
Aus 332.....	70(T)	INT 728.....	42
Aus 343.....	38	INT 9033.....	36
Aus 349.....	75(T)	INT 9035.....	36
Aus 357.....	83(T)		

**28 AUSTRALIA - Product**

Australian Hydrographic Service (AA575734)

**New Edition**

<i>Chart</i>	<i>Published</i>	<i>Title and description of amendments</i>	<i>Price</i>
Aus 5000	13/1/2012	Australian Index of Nautical Charts - Northern Portion 2012	\$17.50
Aus 5001	13/1/2012	Australian Index of Nautical Charts - Southern Portion 2012	\$17.50

**New Chart to be published shortly**

<i>Chart</i>	<i>Title</i>	<i>Scale</i>	<i>Expected Publication Date</i>
Aus 129	Australia - South Coast - South Australia - Approaches to Nepean Bay Plan: Kingscote	1:50 000  1:10 000	27 January 2011
Aus 674	Papua New Guinea - New Britain - North Coast - Approaches to Kimbe including Buluma	1:37 500	27 January 2011

**New Edition to be published shortly**

<i>Chart</i>	<i>Title</i>	<i>Scale</i>	<i>Expected Publication Date</i>
Aus 777	Australia - South Coast - South Australia - Winceby Island to Point Riley Plan: Franklin Harbor Lucky Bay	1:150 000  1:37 500 1:10 000	27 January 2011

**Admiralty publication**

<i>NP No</i>	<i>Title</i>	<i>Date</i>	<i>Remarks</i>
NP 283(2)	Admiralty List of Radio Signals. Maritime Safety Information Services. The Americas, Far East and Oceania.	29/12/2011	The 2010/11 edition is thereby cancelled.

For further details refer to the AHS website at [www.hydro.gov.au](http://www.hydro.gov.au) for new edition and new chart stock arrival information.

When placing orders with a chart agent, mariners should advise whether their order pertains to the current edition or the new edition.

**29\* AUSTRALIA - QUEENSLAND - Cairns - Anchorages; aeronautical beacon**

Maritime Safety Queensland Notice 1231/2011 (AA571772)

**Aus 262 [892/2011]**

Insert	anchor berth, desig <i>CPS1</i>	16° 46'.4 S	145° 44'.7 E
	anchor berth, desig <i>CA1</i>	16° 46'.6 S	145° 50'.4 E
	anchor berth, desig <i>CA2</i>	16° 48'.6 S	145° 52'.7 E
	anchor berth, desig <i>CA3</i>	16° 48'.9 S	145° 54'.2 E
	anchor berth, desig <i>CA4</i>	16° 49'.6 S	145° 48'.0 E
	anchor berth, desig <i>CPS2</i>	16° 49'.8 S	145° 51'.1 E
	anchor berth, desig <i>CA5</i>	16° 51'.0 S	145° 50'.0 E
Delete	depth, 10 <sub>g</sub> m	16° 46'.43 S	145° 44'.71 E
	aero beacon	16° 50'.84 S	145° 44'.11 E

**Aus 830 [892/2011]**

Insert	anchor berth, desig <i>CPS1</i>	16° 46'.4 S	145° 44'.7 E
	anchor berth, desig <i>CA1</i>	16° 46'.6 S	145° 50'.4 E
	anchor berth, desig <i>CA2</i>	16° 48'.6 S	145° 52'.7 E
	anchor berth, desig <i>CA3</i>	16° 48'.9 S	145° 54'.2 E
	anchor berth, desig <i>CA4</i>	16° 49'.6 S	145° 48'.0 E
	anchor berth, desig <i>CPS2</i>	16° 49'.8 S	145° 51'.1 E
	anchor berth, desig <i>CA5</i>	16° 51'.0 S	145° 50'.0 E
Delete	depth, 10 <sub>g</sub> m	16° 46'.4 S	145° 44'.7 E
	aero beacon	16° 50'.8 S	145° 44'.1 E

29\* AUSTRALIA - QUEENSLAND - Cairns - Anchorages; aeronautical beacon (continued)

**AX 6027S** [1119/2011]

Insert	anchor berth, desig <i>CPS1</i>	16° 46'.4 S	145° 44'.7 E
	anchor berth, desig <i>CA1</i>	16° 46'.6 S	145° 50'.4 E
	anchor berth, desig <i>CA2</i>	16° 48'.6 S	145° 52'.7 E
	anchor berth, desig <i>CA3</i>	16° 48'.9 S	145° 54'.2 E
	anchor berth, desig <i>CA4</i>	16° 49'.6 S	145° 48'.0 E
	anchor berth, desig <i>CPS2</i>	16° 49'.8 S	145° 51'.1 E
	anchor berth, desig <i>CA5</i>	16° 51'.0 S	145° 50'.0 E
	anchor berth, desig <i>CA6</i>	16° 57'.7 S	145° 58'.0 E
Delete	depth, 10 <sub>8</sub> m	16° 46'.4 S	145° 44'.7 E
	aero beacon	16° 50'.8 S	145° 44'.1 E

**AX 63262** [892/2011]

Insert	anchor berth, desig <i>CPS1</i>	16° 46'.4 S	145° 44'.7 E
	anchor berth, desig <i>CA1</i>	16° 46'.6 S	145° 50'.4 E
	anchor berth, desig <i>CA2</i>	16° 48'.6 S	145° 52'.7 E
	anchor berth, desig <i>CA3</i>	16° 48'.9 S	145° 54'.2 E
	anchor berth, desig <i>CA4</i>	16° 49'.6 S	145° 48'.0 E
	anchor berth, desig <i>CPS2</i>	16° 49'.8 S	145° 51'.1 E
	anchor berth, desig <i>CA5</i>	16° 51'.0 S	145° 50'.0 E
Delete	depth, 10 <sub>8</sub> m	16° 46'.43 S	145° 44'.71 E
	aero beacon	16° 50'.84 S	145° 44'.11 E

30\* AUSTRALIA - TORRES STRAIT - Ellis Channel - Hovell Bar - Light buoys repositioned

Maritime Safety Queensland Notices 1245/2011, 1264/2011 (AA572754, AA574387)

**Aus 292** [1303/2011]

Insert	starboard lateral conical light buoy, <i>Fl.G.2.5s</i> , without topmark	10° 34'.18 S	142° 15'.15 E
Delete	light buoy	10° 34'.1 S	142° 15'.3 E

**Aus 293** [NC 18/11/2011]

Insert	accompanying block	10° 33'.5 S	142° 15'.5 E
--------	--------------------	-------------	--------------

**Aus 299** [1121/2011]

Insert	accompanying block	10° 34'.1 S	142° 15'.3 E
--------	--------------------	-------------	--------------

31\* AUSTRALIA - NORTHERN TERRITORY - Groote Eylandt - Milner Bay - Port security limit

Office of Transport Security (DHDB 1985428)

**Aus 14 (plan, Milner Bay)** [905/2010]

Insert	restricted area with magenta legend, <i>Port Security Limit</i> , between	13° 51'.482 S	136° 25'.138 E
		13° 51'.512 S	136° 24'.930 E
		13° 51'.540 S	136° 24'.875 E
		13° 51'.756 S	136° 24'.993 E
		13° 51'.728 S	136° 25'.047 E
		13° 51'.585 S	136° 25'.183 E
		13° 51'.570 S	136° 25'.178 E

**32\* AUSTRALIA - NORTHERN TERRITORY - Darwin - Middle Arm - Light buoy**

Darwin Port Corporation Notice 102/2011 (AA574573)

**Aus 24 [1306/2011]**

Insert special spar light buoy, Q(5)Y.20s, with topmark 12° 31'.829 S 130° 51'.161 E

Delete depth, 10<sub>8</sub>m 12° 31'.80 S 130° 51'.17 E**Aus 27 [1306/2011]**

Insert special spar light buoy, Q(5)Y.20s, with topmark 12° 31'.829 S 130° 51'.161 E

Delete depth, 10<sub>8</sub>m 12° 31'.80 S 130° 51'.17 E**33\* AUSTRALIA - WESTERN AUSTRALIA - Varanus Island - Light buoy eastwards**

Apache Energy Ltd (AA572481)

**Aus 62 [1249/2011]**

Delete light buoy 20° 38'.14 S 115° 43'.72 E

**Aus 742 [1248/2011]**

Delete light buoy 20° 38'.1 S 115° 43'.7 E

**34\* AUSTRALIA - WESTERN AUSTRALIA - Weeks Shoal - Light buoy westwards**

Chevron Australia Pty Ltd (AA570399 - AA570404, AA573021, AA573022), MetOcean Engineers (AA572541)

**Aus 64 [856/2011]**

Insert special pillar light buoy, Q(5)Y.20s, without topmark 21° 31'.84 S 115° 01'.87 E

**Aus 743 [1307/2011]**

Insert special pillar light buoy, Q(5)Y.20s, without topmark 21° 31'.84 S 115° 01'.87 E

**35\* AUSTRALIA - WESTERN AUSTRALIA - Bunbury - Anchorages**

Bunbury Port Authority (AA572996, AA575558)

**Aus 115 [44/2011]**Insert anchor berth, desig *F*, with 1389m radius swinging circle 33° 17'.25 S 115° 32'.90 Eanchor berth, desig *G*, with 1389m radius swinging circle 33° 16'.10 S 115° 31'.70 Eanchor berth, desig *H*, with 1389m radius swinging circle 33° 14'.52 S 115° 31'.90 Eanchor berth, desig *I*, with 1389m radius swinging circle 33° 13'.05 S 115° 32'.52 E**Aus 755 [858/2011]**Insert anchor berth, desig *F* 33° 17'.25 S 115° 32'.90 Eanchor berth, desig *G* 33° 16'.10 S 115° 31'.70 Eanchor berth, desig *H* 33° 14'.52 S 115° 31'.90 Eanchor berth, desig *I* 33° 13'.05 S 115° 32'.52 EDelete depth, 22<sub>3</sub>m 33° 17'.0 S 115° 33'.0 E**AX 0755E [858/2011]**Insert anchor berth, desig *F* 33° 17'.25 S 115° 32'.90 Eanchor berth, desig *G* 33° 16'.10 S 115° 31'.70 Eanchor berth, desig *H* 33° 14'.52 S 115° 31'.90 Eanchor berth, desig *I* 33° 13'.05 S 115° 32'.52 EDelete depth, 22<sub>3</sub>m 33° 17'.0 S 115° 33'.0 E

13 January 2012

**36\* SOUTHERN OCEAN - Antarctica - Magnet Bay to Sandefjord Bay - Legends**

Australian Hydrographic Service (AA571322)

**Aus 449 (INT 9035) [361/2011]**

Insert	magenta legend, <i>Adjoining Chart INT 9038 (Aus 448)</i> , in W border	65° 45'.0 S	56° 00'.0 E
--------	---	-------------	-------------

**Aus 450 (INT 9033) [359/2003]**

Insert	magenta legend, <i>Adjoining Chart INT 9035 (Aus 449)</i> , in W border	66° 15'.0 S	66° 50'.0 E
--------	---	-------------	-------------

**37\* AUSTRALIA - SOUTH AUSTRALIA - Thevenard - Yatala Channel - Light beacons**

Former Notice - 990(P)/2011 is cancelled

Department of Planning, Transport and Infrastructure SA Notice 35/2011 (AA556104, AA561567), HydroSurvey Australia (AA572647)

**Aus 122 [966/2011]**

Amend	light beacon to <i>Fl.G.3s No21</i>	32° 10'.00 S	133° 37'.94 E
	light beacon to <i>Fl.R.3s No22</i>	32° 10'.01 S	133° 37'.86 E
	light beacon to <i>Fl.G.3s No23</i>	32° 09'.66 S	133° 37'.84 E
	light beacon to <i>Fl.R.3s No24</i>	32° 09'.67 S	133° 37'.77 E
	light beacon to <i>Fl.G.3s No25</i>	32° 09'.42 S	133° 37'.78 E
	light beacon to <i>Fl.R.3s No26</i>	32° 09'.42 S	133° 37'.70 E
	light beacon to <i>Fl.G.3s No27</i>	32° 09'.28 S	133° 37'.82 E
	light beacon to <i>Oc.R.6s No28</i>	32° 09'.15 S	133° 37'.73 E
	light beacon to <i>Oc.G.6s No29</i>	32° 09'.18 S	133° 37'.93 E
Delete	structure colour, G	32° 08'.61 S	133° 38'.36 E
	structure colour, G	32° 08'.55 S	133° 38'.38 E

**Aus 122 (plan, Thevenard Wharf)**

Amend	light beacon to <i>Oc.R.6s No28</i>	32° 09'.15 S	133° 37'.73 E
	light beacon to <i>Oc.G.6s No29</i>	32° 09'.18 S	133° 37'.93 E

**38\* AUSTRALIA - SOUTH AUSTRALIA - Buffalo Reef - Marine farms**

Department of Planning, Transport and Infrastructure SA Notices 44/2011, 45/2011 (AA573902, AA573903)

**Aus 343 [356/2011]**

Insert	marine farm symbol, centred on	34° 44'.5 S	136° 24'.8 E
	marine farm symbol, centred on	34° 47'.1 S	136° 23'.4 E

**Aus 444 [359/2011]**

Insert	marine farm symbol, centred on	34° 47'.0 S	136° 23'.5 E
	marine farm symbol, centred on	34° 44'.4 S	136° 24'.9 E

**Aus 776 [1253/2011]**

Insert	dashed line with legend, <i>Marine farm (see Note)</i> , between	34° 46'.85 S	136° 22'.64 E
		34° 47'.23 S	136° 22'.64 E
		34° 47'.21 S	136° 24'.28 E
		34° 46'.83 S	136° 24'.28 E
		34° 46'.85 S	136° 22'.64 E
	dashed line and marine farm symbol with legend, ( <i>see Note</i> ), between	34° 44'.23 S	136° 23'.92 E
		34° 44'.50 S	136° 23'.93 E
		34° 44'.48 S	136° 25'.90 E
		34° 44'.21 S	136° 25'.89 E
		34° 44'.23 S	136° 23'.92 E

**38\* AUSTRALIA - SOUTH AUSTRALIA - Buffalo Reef - Marine farms (continued)****AX 0343E [356/2011]**

Insert	marine farm symbol, centred on	34° 44'.5 S	136° 24'.8 E
	marine farm symbol, centred on	34° 47'.1 S	136° 23'.4 E

**AX 0776E [1253/2011]**

Insert	dashed line with legend, <i>Marine farm (see Note)</i> , between	34° 46'.85 S	136° 22'.64 E
		34° 47'.23 S	136° 22'.64 E
		34° 47'.21 S	136° 24'.28 E
		34° 46'.83 S	136° 24'.28 E
		34° 46'.85 S	136° 22'.64 E
	dashed line and marine farm symbol with legend, ( <i>see Note</i> ), between	34° 44'.23 S	136° 23'.92 E
		34° 44'.50 S	136° 23'.93 E
		34° 44'.48 S	136° 25'.90 E
		34° 44'.21 S	136° 25'.89 E
		34° 44'.23 S	136° 23'.92 E

**39\* AUSTRALIA - SOUTH AUSTRALIA - Port Lincoln to Wallaroo - Chart limits; plans withdrawn**

Australian Hydrographic Service (AA571322)

**Aus 134 [1133/2011]**

Insert	magenta limits, with legend <i>Aus 133</i> in NE corner, between	34° 43'.35 S	135° 51'.21 E
		34° 43'.35 S	135° 54'.42 E
		34° 41'.60 S	135° 54'.42 E
		34° 41'.60 S	135° 51'.21 E
		34° 43'.35 S	135° 51'.21 E

Delete	plan, PORT LINCOLN WHARVES	34° 56'.5 S	135° 51'.5 E
	magenta limits, with legend see Plan, centred on	34° 43'.0 S	135° 52'.3 E

**Aus 777 [1253/2011]**

Insert	magenta limits, with legend <i>Aus 133</i> in NW corner, between	33° 57'.56 S	137° 30'.73 E
		33° 57'.56 S	137° 38'.14 E
		33° 52'.27 S	137° 38'.14 E
		33° 52'.27 S	137° 30'.73 E
		33° 57'.56 S	137° 30'.73 E

Delete	plan, WALLAROO BAY	33° 48'.0 S	136° 18'.0 E
	magenta limits, with legend see Plan, centred on	33° 54'.0 S	137° 35'.0 E

**Aus 778 [1253/2011]**

Insert	magenta limits, with legend <i>Aus 133</i> in NW corner, between	33° 54'.52 S	137° 30'.73 E
		33° 52'.27 S	137° 30'.73 E
		33° 52'.27 S	137° 38'.14 E
		33° 54'.52 S	137° 38'.14 E

Delete	magenta limits, with legend <i>Aus 777</i> Plan, centred on	33° 53'.5 S	137° 35'.5 E
--------	---	-------------	--------------

**40\* AUSTRALIA - SOUTH AUSTRALIA - Whyalla to Port Bonython - Chart limits; plans withdrawn**  
Australian Hydrographic Service (AA571322)

**Aus 136 [1253/2011]**

Insert	magenta limits, with legend <i>Aus 135</i> in SE corner, between	33° 04'.00 S 33° 04'.00 S 33° 00'.54 S 33° 00'.54 S 33° 04'.00 S	137° 34'.87 E 137° 39'.06 E 137° 39'.06 E 137° 34'.87 E 137° 34'.87 E
	magenta limits, with legend <i>Aus 135</i> in SE corner, between	33° 02'.25 S 33° 02'.25 S 32° 59'.30 S 32° 59'.30 S 33° 02'.25 S	137° 42'.66 E 137° 47'.90 E 137° 47'.90 E 137° 42'.66 E 137° 42'.66 E
Delete	magenta limits, with legend see Plan, centred on magenta limits, with legend see Plan, centred on	33° 01'.5 S 33° 00'.5 S	137° 36'.5 E 137° 45'.5 E

**Aus 136 (plan, Port Bonython)**

Delete	plan, PORT BONYTHON	33° 00'.5 S	137° 45'.5 E
--------	---------------------	-------------	--------------

**Aus 136 (plan, Whyalla)**

Delete	plan, WHYALLA	33° 01'.5 S	137° 36'.5 E
--------	---------------	-------------	--------------

**41\* AUSTRALIA - SOUTH AUSTRALIA - Spencer Gulf - Ward Spit - Depth**  
HydroSurvey Australia (DHDB 1984078)

**Aus 136 [40/2012]**

Insert	depth, 13 <sub>2</sub> m	33° 02'.54 S	137° 46'.20 E
--------	--------------------------	--------------	---------------

**Aus 778 [39/2012]**

Insert	depth, 13 <sub>2</sub> m	33° 02'.54 S	137° 46'.20 E
--------	--------------------------	--------------	---------------

**42\* AUSTRALIA - SOUTH AUSTRALIA - Kangaroo Island - Chart limits; legend**  
Australian Hydrographic Service (AA571322)

**Aus 444 [38/2012]**

Insert	magenta legend, <i>Adjoining Chart Aus 346</i> , in S border	36° 30'.0 S	136° 50'.0 E
Delete	magenta limits, with legend <i>Aus 346</i> , centred on	36° 05'.0 S	136° 52'.0 E

**Aus 4727 (INT 727) [598/2010]**

Insert	magenta limits, with legend <i>Aus 346</i> in SW corner, between	37° 26'.00 S 37° 26'.00 S 35° 50'.00 S 35° 50'.00 S	136° 55'.65 E 135° 22'.00 E 135° 22'.00 E 136° 55'.65 E
Delete	magenta limits, with legend <i>Aus 346</i> , centred on	36° 20'.0 S	136° 15'.0 E

**Aus 4728 (INT 728) [98/2011]**

Insert	magenta limits, with legend <i>Aus 346</i> in SE corner, between	37° 26'.0 S 37° 26'.0 S 35° 50'.0 S 35° 50'.0 S	135° 28'.0 E 138° 30'.0 E 138° 30'.0 E 135° 28'.0 E
Delete	magenta limits, with legend <i>Aus 346</i> , centred on	36° 15'.0 S	137° 00'.0 E

13 January 2012

**43\* AUSTRALIA - SOUTH AUSTRALIA - Port Stanvac - Prohibited area**  
 Department of Planning, Transport and Infrastructure SA Notice 32/2011 (AA571786)

**Aus 125 (plan, Port Stanvac) [1013/2011]**

Insert	prohibited area limit, between	35° 05'.604 S	138° 27'.819 E
		35° 05'.344 S	138° 28'.055 E
		35° 05'.621 S	138° 28'.507 E
		35° 05'.881 S	138° 28'.272 E
		35° 05'.604 S	138° 27'.819 E

**44\* AUSTRALIA - VICTORIA - Port Phillip - South Channel - Light beacon; channel**

*Former Notice - 1347(P)/2011 is cancelled*  
 Victorian Notice 143/2011 (AA571850)

**Aus 143 [1314/2011]**

Insert	port lateral light beacon, <i>F(3)R. 10s</i> , with topmark	38° 19'.64 S	144° 54'.21 E
--------	---	--------------	---------------

**Aus 158 [1314/2011]**

Insert	accompanying block	38° 19'.0 S	144° 54'.5 E
--------	--------------------	-------------	--------------

**45(T)/2012 AUSTRALIA - NEW SOUTH WALES - Port Jackson - Sow and Pigs - Beacon restored**  
*Former Notice - 1319(T)/2011 is cancelled*  
Roads and Maritime Services NSW (AA574094)

Cancel this notice on receipt.

**Chart formerly affected – Aus 200 – Aus 201 – AX 6201F**

**46(T)/2012 AUSTRALIA - NEW SOUTH WALES - Port Jackson - Shark Island - Wreck**  
Department of Defence, Sydney Ports Corporation (AA574742, AA574743)

A wreck, least depth *8m*, exists in position 33° 51'.27 S 151 15'.49 E.

**Chart temporarily affected – Aus 200 – Aus 201 – AX 6201F – AX 63200**

**47(T)/2012 AUSTRALIA - NEW SOUTH WALES - Newcastle - Depth information**

Former Notice - 1264(T)/2011 is cancelled

Newcastle Port Corporation (AA573899)

Available depths as at 21 December 2011:

<i>Berth</i>	<i>Metres</i>
Western Basin 3	11.3
Western Basin 4	11.3
Eastern Basin 1	11.3
Eastern Basin 2 North of Ch 450	11.6
* Eastern Basin 2 South of Ch 450	11.2
Channel Berth	8.3
Dyke 1	12.5
* Dyke 2	12.3
Dyke 4	16.5
Dyke 5	16.5
Dyke 6	6.3
Mayfield 4 Ch 27 to 266	12.2
BHP Wharf 6 to Ch 1050	7.3
* Kooragang 2	11.3
* Kooragang 2 North Dolphin Ch 182 to 228	11.2
* Kooragang 2 South Dolphin Ch -92 to 00	11.2
* Kooragang 3	12.8
* Kooragang 4	16.5
* Kooragang 5	16.5
* Kooragang 6	15.7
* Kooragang 7	16.1
Kooragang 8	16.5
* Kooragang 9	16.3
Kooragang Ship Receiving KSR	7.5
Throsby 1	8.4
Carrington Wharf	To be sounded as and when required
Foreshore Park Berth	5.9
Elgo Wharf	To be sounded as and when required
<i>Channels</i>	
Entrance Approach	17.7
Entrance Channel (18.0m)	18.0
Entrance Channel (17.4m)	17.4
Entrance Channel (16.8m)	16.8
Entrance Channel (16.2m)	16.2
Entrance Channel to Horseshoe	15.2
Horseshoe	15.0
Steelworks Channel to Swinging Basin	15.0
Swinging Basin	15.0
* Hunter River South Arm (Kooragang 6 to buoy 16)	15.2
* Hunter River South Arm (buoy 16 to buoy 18)	14.9
Basin Cutting	12.8
Basin Area to Eastern & Western Basin Berths	12.3
* Basin Area to 1 Throsby	9.4
Stockton Crossing	3.6
* Indicates revised entry.	

**Chart temporarily affected – Aus 207 – Aus 208**

**48(T)/2012 AUSTRALIA - QUEENSLAND - Moreton Bay - Brisbane River - Depth information**

Former Notice - 1321(T)/2011 is cancelled

Maritime Safety Queensland Notice 1261/2011 (AA574956)

Available depths and under keel clearances (UKC) at 22 December 2011:

<i>Berth</i>	<i>Metres</i>	<i>Remarks</i>
Fisherman Islands No10	13.9	
Fisherman Islands No9	13.9	
Fisherman Islands No8	14.0	
Fisherman Islands No7	14.0	
Fisherman Islands No6	14.1	
Fisherman Islands No5	14.0	
Fisherman Islands No4	13.9	
Fisherman Islands No3	14.0	
Fisherman Islands No2	14.0	
Fisherman Islands No1	13.9	
Fisherman Islands Grain and Woodchip	13.2	
Caltex Fisherman Islands	14.6	
Fisherman Islands Coal	14.0	
Fisherman Islands General Purpose	11.5	
BP Luggage Point	14.0	
Caltex Products	9.8	
Cement Australia Co Wharf	9.8	
BP Products	10.8	
Shell	10.9	
Pacific Terminals	10.8	
Incitec North	10.0	
Incitec South	10.0	
Pinkenba 1	10.4	
Pinkenba 2	10.4	
Riverside Marina	-	
Sugar Terminal	9.7	
Cairncross Fitting Out Wharf	8.0	
Cairncross Breasting Wharf	6.3	
Brisbane Naval Wharf	-	
Maritime No3	5.6	(not maintained)
Maritime No2	8.6	
Maritime No1	9.1	
Hamilton No4	10.0	
Hamilton No1	8.9	
Brisbane Cruise Ship Terminal	8.9	
	<i>Metres</i>	<i>UKC/Remarks</i>
<i>Moreton Bay :</i>		
North East Channel	5.5	1.5
* North West Channel	15.0	2.3 (280m width)
North West Bypass Channel	9.2	1.6
Spitfire Channel	15.0	1.5 (600m width)
East Knoll Bypass Channel	6.9	1.4
East Channel	15.0	1.5 (300m width from western side)
Main Channel (M8 - M9)	10.0	1.8
Entrance Channel (E5 - EBCN)	14.7	1.5
<i>Brisbane River :</i>		
Entrance Beacons and Bar Cutting	14.0	1.46
Fisherman Islands Swing Basin	13.2	1.3
Pelican Banks Reach to Hamilton Reach	9.0	0.6 / 0.9 (draft/tide)
Cement Australia Swing Basin	9.0	0.6 / 0.9 (draft/tide)
Pinkenba Swing Basin	9.0	0.6 / 0.9 (draft/tide)
Hamilton Swing Basin	9.0	0.6 / 0.9 (draft/tide)

\* Indicates new or revised entry.

**Chart temporarily affected – Aus 235 – Aus 236 – Aus 237 – Aus 238 – Aus 814 – Aus 815**

**49(T)/2012 AUSTRALIA - QUEENSLAND - Brisbane River - Town Reach - Light buoy established***Former Notice - 108(T)/2011 is cancelled*

Maritime Safety Queensland Notices 82(T)/2011, 1258/2011 (AA514569, AA573806)

An obstruction marked by special light buoy, *Fl.Y.2-5s*, exist in position 27° 27'.84 S 153° 02'.11 E.**Chart temporarily affected – Aus 238****50(T)/2012 AUSTRALIA - QUEENSLAND - Brisbane River - Shafston Reach - Harbour works completed***Former Notice - 369(T)/2011 is cancelled*

Maritime Safety Queensland Notice 1257/2011 (AA573801)

Cancel this notice on receipt.

**Chart formerly affected – Aus 238****51(T)/2012 AUSTRALIA - QUEENSLAND - Moreton Bay - Bramble Bay - Light beacon restored***Former Notice - 1022(T)/2011 is cancelled*

Maritime Safety Queensland Notice 1265/2011 (AA574957)

Cancel this notice on receipt.

**Chart formerly affected – Aus 236****52(T)/2012 AUSTRALIA - QUEENSLAND - Mooloolaba - Shoaling***Former Notice - 1324(T)/2011 is cancelled*

Maritime Safety Queensland Notice 21(T)/2012 (AA575544)

Shoaling with a least depth of *2.1m* exists within the entrance channel to Mooloolah River (26° 40'.75 S 153° 07'.91 E). Deeper water, least depth *3.1m*, exists northwest of the western breakwater in the vicinity of position 26° 40'.78 S 153° 07'.91 E.

Mariners are advised to navigate with caution in the area.

**Chart temporarily affected – Aus 235****53(T)/2012 AUSTRALIA - QUEENSLAND - Gladstone - Dredging operations completed***Former Notice - 1325(T)/2011 is cancelled*

Maritime Safety Queensland Notice 32(T)/2012 (AA576895)

Cancel this notice on receipt.

**Chart formerly affected – Aus 244 – Aus 245 – Aus 246****54(T)/2012 AUSTRALIA - QUEENSLAND - Hay Point - Diving operations***Former Notice - 1208(T)/2011 is cancelled**Date - Until 30 June 2012*

Maritime Safety Queensland Notice 20(T)/2012 (AA575125)

Diving operations are in progress in the vicinity of the HPS berths (21° 15'.68 S 149° 18'.76 E).

MV *Investigator* is onsite and will display appropriate shapes and will monitor VHF Ch 14 and Ch 16.

Mariners are advised to navigate with caution in the area.

**Chart temporarily affected – Aus 249 – Aus 250**

**55(T)/2012 AUSTRALIA - QUEENSLAND - Hay Point - Diving operations***Former Notice - 1209(T)/2011 is cancelled**Date - Until 30 March 2012*

Maritime Safety Queensland Notice 1263(T)/2012 (AA574996)

Diving operations are in progress in the vicinity of the DBCT berths (21° 14'.96 S 149° 18'.31 E).

MV *Shadows* is onsite and will display appropriate shapes and will monitor VHF Ch 14 and Ch 16.

Mariners are advised to navigate with caution in the area.

**Chart temporarily affected – Aus 249 – Aus 250****56(T)/2012 AUSTRALIA - QUEENSLAND - Abbot Bay - Clark Shoal - Light beacon unlit***Date - Until 30 June 2012*

Maritime Safety Queensland Notice 24(T)/2012 (AA575902)

The east cardinal light beacon, Q(3)10s (19° 51'.11 S 148° 03'.89 E), is unlit; a special light buoy, *Fl. Y.3s*, exists in situ.**Chart temporarily affected – Aus 255 – Aus 826****57(T)/2012 AUSTRALIA - QUEENSLAND - Townsville - Depth information***Former Notice - 1213(T)/2011 is cancelled*

Maritime Safety Queensland Notice 15(T)/2012 (AA575370)

Available depths as at 5 January 2012:

	<i>Metres</i>	<i>Remarks</i>
Sea Channel	11.7	
* Platypus Channel	11.7	
Outer Harbour:		
Arrival Channel	7.0	
* Departure Channel	10.9	
Inner Harbour:		
Harbour	11.5	
Berths:		
* No 1	11.2	
* No 2	11.3	
No 3	11.8	
* No 4	10.5	
	9.5	Arrival to departure from from 0 mark
	10.1	Arrival to departure from from 10 mark
	10.5	Arrival to departure from from 20 mark
* No 7	10.5	
Between No 7 and No 8	9.8	Seaward of 0 mark at No 7
* No 8	9.0	
* No 9	11.4	
* Between No 9 and No 10	10.2	Seaward of 0 mark at No 10
* No 10	9.2	From 10 mark to seaward dolphin
	9.2	From Ro-Ro ramp to 10 mark
* No 11	11.3	
Ross River Channel	-	No declared depth
Ross River	-	No declared depth
Ross Creek	-	No declared depth
*       Indicates revised entry.		

**Chart temporarily affected – Aus 256 – Aus 257**

**58(T)/2012 AUSTRALIA - TORRES STRAIT - Adolphus Channel to Gannet Passage - AIS trial***Former Notice - 1331(T)/2011 is cancelled*

Australian Maritime Safety Authority (AA567095, AA572149, AA572150, AA573831)

AIS units have been attached to nav aids as follows:

<i>MMSI</i>	<i>Position (WGS84 datum)</i>	<i>Type</i>	<i>Remarks</i>
995031033	10° 28'.43 S 142° 22'.61 E	Real	Alert Patches north cardinal light buoy
995031038	10° 29'.77 S 142° 27'.08 E	Synthetic	East Strait Island rear light
995031022	10° 30'.16 S 142° 21'.51 E	Real	Herald Patches starboard lateral light buoy
995031023	10° 33'.91 S 142° 09'.13 E	Real	Goods Island rear light
995031039	10° 35'.49 S 141° 52'.41 E	Synthetic	Gannet Passage south cardinal light buoy
995036032	10° 40'.20 S 142° 37'.80 E	Virtual	Quetta Rock.

**Chart temporarily affected – Aus 292 – Aus 293 – Aus 296 – Aus 299 – Aus 376 – Aus 700 – Aus 839****59(T)/2012 AUSTRALIA - QUEENSLAND - Thursday Island - Depth information**

Maritime Safety Queensland Notice 1(T)/2012 (AA574953)

Available depths as at 2 January 2012:

	<i>Metres</i>
Hovell Bar	3.2
Main Wharf	3.1 (4.1m alongside wharf)
Caltex Wharf	4.1
Engineers Wharf	3.5
Boat Channel	4.6
Inner Harbour	4.8

\* Indicates revised entry.

**Chart temporarily affected – Aus 293 – Aus 299****60(T)/2012 AUSTRALIA - QUEENSLAND - Weipa - Depth information***Former Notice - 67(T)/2011 is cancelled*

Maritime Safety Queensland Notice 8(T)/2012 (AA574948)

Available depths as at 3 January 2012:

	<i>Metres</i>
Weipa Approaches	11.1
South Channel	11.1
Departure Channel	11.1
Cora Bank South Channel	7.3
Humbug Point Approaches	8.6
Humbug Point Berth	9.5
Evans Landing	9.6
Lorim Point East	12.3
Lorim Point West	12.3

\* Indicates new or revised entry

**Chart temporarily affected – Aus 4****61(T)/2012 AUSTRALIA - QUEENSLAND - Weipa - Mission River - Mooring buoy established***Date - Until 31 May 2012*

Maritime Safety Queensland Notice 1234(T)/2011 (AA571766)

A lit white mooring buoy, Q, exists in position 12° 36'.20 S 141° 51'.89 E.

**Chart temporarily affected – Aus 4**

**62(T)/2012 AUSTRALIA - NORTHERN TERRITORY - Darwin - Depth information**

*Former Notice - 173(T)/2011 is cancelled*  
 Darwin Port Corporation (AA573905)

Available depths as at 21 December 2011:

<i>Berths</i>	<i>Metres</i>
* DLNG	13.1 (11.7 in Turning Basin)
* LNG 1-2	10.5
* East Arm 0-100m	11.4
East Arm 100-200m	12.4
* East Arm 200-300m	12.5
* East Arm 300-400m	12.9
East Arm 400-500m	12.8
East Arm 500-600m	13.4
East Arm 600-700m	11.8
Bulk Solids Wharf	12.4
Bulk Liquids Wharf	11.4
* No 2 Fort Hill East	10.6
* No 2 Fort Hill West	10.2
No 3 Stokes Hill East	4.7
* No 3 Stokes Hill West	4.9
* No 4 Stokes Hill East	1.7
* No 4 Stokes Hill Middle	0.8
* No 4 Stokes Hill West	3.2
Fishermans Wharf East	2.1
Fishermans Wharf West	0.7
* Perkins International	-0.7
* Perkins Domestic North	-0.9
* Perkins Domestic South	-1.7
* Frances Bay Marina approach channel	-0.9
*       Indicates new or revised entry.	

**Chart temporarily affected – Aus 24 – Aus 27 – Aus 28**

**63(T)/2012 AUSTRALIA - NORTHERN TERRITORY - Darwin - Frances Bay - Mooring buoy recovered**

*Former Notice - 1161(T)/2011 is cancelled*  
 Darwin Port Corporation (AA575344)

Cancel this notice on receipt.

**Chart formerly affected – Aus 24 – Aus 26 – Aus 28 – AX 72026**

**64(T)/2012 AUSTRALIA - TIMOR SEA - Melville Island - Seismic survey northwestwards completed**

*Former Notice - 1164(T)/2011 is cancelled*  
 Eni Australia Limited (AA574919)

Cancel this notice on receipt.

**Chart formerly affected – Aus 310 – Aus 311– Aus 4721 (INT 721) – AX 0310F – AX 0311F – AX 4721F**

**65(T)/2012 AUSTRALIA - TIMOR SEA - Sahul Banks to Joseph Bonaparte Gulf - Seismic survey***Former Notice - 1221(T)/2011 is cancelled**Date - Until 31 March 2012*

Albers Group (AA575556)

MV *Voyager Explorer* is conducting a survey in the areas bounded by the following positions:

## Area 1

11° 39'.83 S 126° 11'.16 E

11° 51'.58 S 126° 25'.06 E

11° 55'.70 S 125° 25'.03 E

12° 15'.28 S 125° 57'.35 E

11° 55'.90 S 126° 44'.41 E

## Area 2

12° 04'.85 S 126° 37'.72 E

12° 18'.70 S 126° 47'.08 E

12° 29'.13 S 126° 35'.71 E

12° 28'.40 S 126° 22'.76 E

12° 17'.24 S 126° 15'.10 E.

**Chart temporarily affected – Aus 314 – Aus 315 – Aus 319 – AX 0314F – AX 0315F – AX 0319F****66(T)/2012 AUSTRALIA - TIMOR SEA - Osborn Passage - Seismic survey***Date - Until 24 February 2012*

MEO Australia Ltd (AA575400, AA575401, AA575406, AA575408)

MV *Viking II* is conducting a survey in the area bounded by the following positions:

12° 42'.25 S 124° 40'.10 E

12° 34'.95 S 124° 40'.07 E

12° 34'.92 S 124° 45'.07 E

12° 17'.62 S 124° 45'.11 E

12° 15'.35 S 124° 55'.02 E

12° 29'.88 S 125° 00'.36 E

12° 34'.93 S 124° 56'.53 E

12° 42'.21 S 124° 46'.37 E.

**Chart temporarily affected – Aus 314 – Aus 319 – AX 0314F – AX 0319F****67(T)/2012 AUSTRALIA - WESTERN AUSTRALIA - Irvine Island - Scientific instruments recovered***Former Notice - 1142(T)/2010 is cancelled*

Department of Transport WA (AA536785)

Cancel this notice on receipt.

**Chart formerly affected – Aus 40 – Aus 732 – Aus 733****68(T)/2012 AUSTRALIA - WESTERN AUSTRALIA - Delambre Island to Dixon Island - Drilling operations***Date - Until 30 June 2012*

API Management Pty Ltd (AA575102, AA575103), Department of Transport WA Notice 6/2012 (AA576682)

A jack-up barge is conducting drilling operations between the following positions:

20° 28'.0 S 117° 09'.0 E

20° 30'.0 S 117° 10'.0 E

20° 34'.0 S 117° 06'.0 E

20° 37'.0 S 117° 05'.0 E.

**Chart temporarily affected – Aus 55 – Aus 57 – Aus 740 – Aus 741**

**69(T)/2012 AUSTRALIA - WESTERN AUSTRALIA - Thevenard Island - Scientific instruments***Former Notice* - 1340(T)/2011 is cancelled*Date* - Until 30 November 2012

Chevron Australia Pty Ltd (AA570399 - AA570404, AA573021, AA573022), MetOcean Engineers (AA572541)

Scientific instruments marked by special light buoys, *Fl(5)Y.20s*, exist in the following positions:

21° 22'.08 S 114° 50'.93 E

21° 28'.41 S 115° 08'.41 E

21° 28'.43 S 115° 08'.51 E

21° 31'.75 S 115° 01'.82 E

21° 35'.00 S 115° 01'.28 E

21° 39'.29 S 115° 00'.09 E.

**Chart temporarily affected – Aus 64 – Aus 328 – Aus 743****70(T)/2012 AUSTRALIA - WESTERN AUSTRALIA - Geraldton - Oakajee River - Scientific instruments recovered***Former Notice* - 624(T)/2011 is cancelled

MetOcean Engineers (AA575068)

Cancel this notice on receipt.

**Chart formerly affected – Aus 332 – Aus 751****71(T)/2012 AUSTRALIA - SOUTH AUSTRALIA - Wallaroo - Depth information***Former Notice* - 176(T)/2009 is cancelled

Department for Transport, Energy and Infrastructure SA Notice 38/2010 (AA515239, AA515240)

Available depths as at 24 August 2010:

	<i>Metres</i>	<i>Remarks</i>
* No 1 South Berth	8.7	Berth pocket is 313m x 36m and is 84m in from outer edge of wharf.
* No 2 North Berth	8.7	Berth pocket is 246m x 36m and is 20m in from outer edge of wharf.

\* Indicates new or revised entry.

**Chart temporarily affected – Aus 133****72(T)/2012 AUSTRALIA - SOUTH AUSTRALIA - Adelaide - Osborne - Dredging operations completed***Former Notice* - 1050(T)/2011 is cancelled

HydroSurvey Australia (AA572656)

Cancel this notice on receipt.

**Chart formerly affected – Aus 130 – Aus 137****73(T)/2012 AUSTRALIA - TASMANIA - Second Lookout Point - Scientific instrument***Date* - Until 19 December 2012

Marine and Safety Tasmania Notice M155/2011 (AA572764)

A special light buoy, *Iso. Y.2s*, exists in position 43° 36'.05 S 146° 57'.87 E.**Chart temporarily affected – Aus 173 – Aus 794 – Aus 795****74(T)/2012 AUSTRALIA - TASMANIA - D'Entrecasteaux Channel - Great Taylors Bay - Marine farm***Former Notice* - 838(T)/2011 is cancelled

Marine and Safety Tasmania Notice M103/2011 (AA549297)

Cancel this notice on receipt.

**Chart formerly affected – Aus 173 – Aus 795**

**75(T)/2012 AUSTRALIA - VICTORIA - Barwon Heads - Light relit**

*Former Notice* - 669(T)/2011 is cancelled  
Victorian Notice 1(T)/2012 (AA576201)

Cancel this notice on receipt.

**Chart formerly affected – Aus 143 – Aus 349 – Aus 788**

**76(T)/2012 AUSTRALIA - VICTORIA - Port Phillip - South Channel - Scientific instruments**

Victorian Notice 156(T)/2011 (AA575139)

Special light buoys, *Fl. Y.2s*, exist in positions 38° 20'.15 S 144° 52'.78 E and 38° 20'.12 S 144° 54'.54 E.

**Chart temporarily affected – Aus 143 – Aus 158**

**77(T)/2012 AUSTRALIA - VICTORIA - Port Phillip - Swan Bay - Harbour works completed**

*Former Notice* - 1109(T)/2011 is cancelled  
Victorian Notice 150(T)/2011 (AA571828)

Cancel this notice on receipt.

**Chart formerly affected – Aus 143 – Aus 158**

**78(T)/2012 AUSTRALIA - VICTORIA - Port Phillip - Geelong - Harbour works**

*Date* - Until 30 April 2012  
Victorian Notice 2/2012 (AA574924)

Harbour works associated with the construction of a new floating function centre and wave attenuator are in progress in the vicinity of position 38° 08'.48 S 144° 21'.60 E.

A barge is onsite and all hazards to navigation will display appropriate lights and shapes.

Mariners are advised to navigate with caution in the area.

**Chart temporarily affected – Aus 153 – Aus 157**

**79(T)/2012 AUSTRALIA - VICTORIA - Port Phillip - Corio Bay - Light buoy established**

*Date* - Until 31 March 2012  
Victorian Notice 3(T)/2012 (AA575740)

A special conical light buoy, *Fl. Y.5s*, exists in position 38° 06'.23 S 144° 22'.76 E.

**Chart temporarily affected – Aus 153 – Aus 157**

**80(T)/2012 AUSTRALIA - VICTORIA - Port Phillip - Patterson River - Shoaling removed**

*Former Notice* - 672(T)/2011 is cancelled  
Victorian Notice 1(T)/2012 (AA576201)

Cancel this notice on receipt.

**Chart formerly affected – Aus 143**

**81(T)/2012 AUSTRALIA - VICTORIA - Corner Inlet - Franklin Channel - Mooring buoys**

Victorian Notice 144(T)/2011 (AA571854, AA573900)

Lit mooring buoys, *Fl. Y.5s*, exist in positions 38° 45'.66S 146° 24'.00E and 38° 45'.64S 146° 24'.55E (WGS84 datum).

**Chart temporarily affected – Aus 181**

**82(T)/2012 AUSTRALIA - VICTORIA - Port Albert - Shoaling**

Former Notice - 800(T)/2009 is cancelled  
Victorian Notice 157(T)/2011 (AA575145)

Shoaling exists between positions 38° 45'.13 S 146° 42'.66 E and 38° 44'.73 S 146° 40'.32 E (WGS84 datum).

Mariners are advised to navigate with caution in the area.

**Chart temporarily affected – Aus 181 – Aus 182****83(T)/2012 AUSTRALIA - VICTORIA - Cape Conran - Oilfield infrastructure removal southwards**

Date - Until 15 April 2012  
Roc Oil Company (AA575894, AA575895)

The ISV *Skandi Hercules* and support vessels *Pacific Crest* and MT *Keera* are conducting a well abandonment program in an area bounded by the following positions:

38° 16'.85 S 148° 41'.30 E  
38° 16'.66 S 148° 42'.97 E  
38° 17'.72 S 148° 43'.92 E  
38° 19'.29 S 148° 43'.91 E  
38° 17'.98 S 148° 42'.41 E.

**Chart temporarily affected – Aus 357 – Aus 487 – Aus 4644 (INT 644)****84(T)/2012 AUSTRALIA - TASMAN SEA - Tasman Basin - Light buoy off station**

Bureau of Meteorology (AA575035)

The light buoy, *Fl. Y.2s*, (44° 51'.0 S 161° 44'.0 E), is drifting and is currently in position 44° 41'.87 S 161° 22'.79 E (27 Dec 2011).

**Chart temporarily affected – Aus 4601 (INT 601)****85(T)/2012 AUSTRALIA - TEMPORARY AND PRELIMINARY NOTICES**

Former Notice - 1057(T)/2011 is cancelled  
Australian Hydrographic Service (AA562276)

<i>Notice</i>	<i>Charts affected</i>	<i>Locality and Subject</i>
<b>448/2011</b>	Aus357-487	<b>BASS STRAIT</b> Platforms; pipeline
<b>317/2006</b>	Aus191	<b>NEW SOUTH WALES</b> <i>Batemans Bay</i> Shoaling; buoy
<b>1113/2009</b>	Aus198-199-AU5198X9	<i>Botany Bay</i> Harbour works
<b>1139/2011</b>	Aus198-199	Harbour works
<b>1318/2011</b>	Aus198	Taren Point-Harbour works
<b>1318/2010</b>	Aus197-204-215-489-809-4643- AX0809E-67215	<i>Broken Bay</i> Barrenjoey Head-Light range reduced
<b>748/2011</b>	Aus197-808-809-AX0808E-0809E	<i>Cape Baily to Ben Buckler</i> Scientific instruments
<b>258/2011</b>	Aus195-197-806-807-808-809-810-811- 812-813-AX0808E-0809E	<i>Green Cape to Ballina Head</i> Scientific instruments
<b>847/2010</b>	Aus219-AU5219P3	<i>Hastings River</i> Light discontinued

## 85(T)/2012 AUSTRALIA - TEMPORARY AND PRELIMINARY NOTICES (continued)

<i>Notice</i>	<i>Charts affected</i>	<i>Locality and Subject</i>
<b>750/2011</b>	Aus197-200-201-AX6201F-63200	<i>Manly</i> Scientific instruments
<b>201/2011</b>	Aus207-208	<i>Newcastle</i> Harbour works; dredging operations
<b>1141/2011</b>	Aus207-208	Infrastructure; nav aids
<b>1197/2011</b>	Aus207-208	Dredging operations
<b>47/2012</b>	Aus207-208	Depth information
<b>1317/2011</b>	Aus198	<i>Port Hacking</i> Shoaling
<b>46/2012</b>	Aus200-201-AX6201F-63200	<i>Port Jackson</i> Shark Island-Wreck
<b>410/2011</b>	Aus194-195	<i>Port Kembla</i> Spoil ground
<b>514/2011</b>	Aus194	Depth information
<b>864/2011</b>	Aus194-195	Obstruction
<b>808/2011</b>	Aus204	<i>Wamberal</i> Scientific instrument
<b>NORTHERN TERRITORY</b>		
<b>324/2011</b>	Aus22-23-309-722-AX0309F-72309-72722	<i>Apsley Strait</i> Light buoys off station and unlit
<b>617/2011</b>	Aus442	<i>Cape Wessels</i> Hulk westnorthwestward
<b>62/2012</b>	Aus24-27-28	<i>Darwin</i> Depth information
<b>950/2004</b>	Aus309-311-315	<i>Troubadour Shoals</i> Scientific instruments
<b>QUEENSLAND</b>		
<b>1277/2011</b>	Aus255	<i>Abbot Bay</i> Drilling operations
<b>56/2012</b>	Aus255-826	Light beacon unlit
<b>1212/2011</b>	Aus255-826	<i>Abbot Point</i> Scientific instruments
<b>1276/2011</b>	Aus255	Scientific instrument
<b>381/2010</b>	Aus251-AU421148	<i>Acacia Island</i> Light beacon destroyed
<b>819/2008</b>	Aus252-253-268-AU5268P2	<i>Airlie Beach</i> Light buoys established
<b>667/2009</b>	Aus252-253-268-AU5268P2	Wreck
<b>62/2011</b>	Aus252-253-268	Muddy Bay-Light beacons established
<b>760/2011</b>	Aus252-253-268	Wreck
<b>1031/2011</b>	Aus268	Harbour works
<b>1210/2011</b>	Aus268	Abel Point-Obstructions
<b>662/2011</b>	Aus4-701	<i>Albatross Bay</i> Scientific instrument

## 85(T)/2012 AUSTRALIA - TEMPORARY AND PRELIMINARY NOTICES (continued)

<i>Notice</i>	<i>Charts affected</i>	<i>Locality and Subject</i>
<b>871/2011</b>	Aus815	<i>Arkwright Point</i> Scientific instrument
<b>872/2011</b>	Aus254-825	<i>Bait Reef</i> Light beacon destroyed
<b>716/2010</b>	Aus254-825-AU320149	<i>Barb Reef</i> Beacon destroyed
<b>212/2011</b>	Aus252-254-825	<i>Bird Island to Groper Point</i> Nav aids
<b>845/2009</b>	Aus252-254-AU5254P2	<i>Black Island</i> Light beacon destroyed
<b>267/2011</b>	Aus268	<i>Bowen</i> Light buoy off station
<b>1211/2011</b>	Aus268	Obstruction
<b>415/2011</b>	Aus246	<i>Boyne River</i> Shoaling
<b>1090/2006</b>	Aus238	<i>Brisbane River</i> Lights altered
<b>812/2011</b>	Aus237	Outer Bar Reach-Light buoy repositioned
<b>1021/2011</b>	Aus237	Fisherman Islands-Harbour works; light buoys
<b>1145/2011</b>	Aus238	Petrie Bight-Harbour works
<b>1199/2011</b>	Aus238	Shafston Reach to Bulimba Reach-Harbour works
<b>49/2012</b>	Aus238	Town Reach-Light buoy established
<b>1386/2010</b>	Aus242	<i>Bundaberg</i> Anchoring prohibited
<b>1269/2011</b>	Aus242-243	Depth information
<b>1270/2011</b>	Aus242	Rocky Reach-Obstruction
<b>519/2011</b>	Aus242	<i>Burnett River</i> Dredging operations; pipeline
<b>919/2011</b>	Aus242	Nav aids; shoaling
<b>222/2011</b>	Aus263	<i>Cairns</i> Wreck
<b>378/2011</b>	Aus262-AX63262	Light beacon damaged
<b>873/2011</b>	Aus262-263-264-830	Depth information
<b>1037/2011</b>	Aus262-263-AX63262	Harbour works
<b>1154/2011</b>	Aus264	Trinity Inlet-Smiths Creek-Wreck
<b>1283/2011</b>	Aus263-264	Obstruction
<b>1284/2011</b>	Aus263-264	Wreck
<b>926/2011</b>	Aus826-827	<i>Cape Bowling Green</i> Scientific instrument
<b>1278/2011</b>	Aus826-827	Light buoy off station
<b>1395/2010</b>	Aus256-827	<i>Cape Cleveland</i> Scientific instrument
<b>1032/2011</b>	Aus255-825-826	<i>Cape Edgecumbe to Abbot Point</i> Scientific instruments
<b>717/2010</b>	Aus256-827-AU320147	<i>Cape Ferguson</i> Scientific instruments

## 85(T)/2012 AUSTRALIA - TEMPORARY AND PRELIMINARY NOTICES (continued)

<i>Notice</i>	<i>Charts affected</i>	<i>Locality and Subject</i>
<b>804/2010</b>	Aus246-819-AU424151	<i>Colosseum Inlet</i> Obstruction
<b>929/2010</b> <b>1285/2011</b>	Aus270 Aus270	<i>Cooktown</i> Depth information Light beacon destroyed
<b>971/2010</b>	Aus830	<i>Double Island</i> Scientific instrument
<b>924/2011</b>	Aus249-250-823-AX0249E	<i>Dudgeon Point</i> Scientific instruments
<b>223/2011</b>	Aus376-837-839	<i>Dugong Island</i> Wreck
<b>419/2011</b>	Aus247-819-820	<i>Emu Point</i> Lights altered
<b>60/2011</b>	Aus247-819	<i>Fitzroy River</i> Light buoys off station
<b>1445/2009</b> <b>206/2011</b> <b>417/2011</b> <b>418/2011</b> <b>470/2011</b> <b>522/2011</b> <b>609/2011</b> <b>651/2011</b> <b>653/2011</b> <b>702/2011</b> <b>920/2011</b> <b>1203/2011</b> <b>1204/2011</b> <b>1205/2011</b> <b>1206/2011</b> <b>1272/2011</b>	Aus246-AU424151 Aus246 Aus245 Aus245 Aus245-819 Aus245 Aus244-245 Aus819 Aus244-245 Aus245 Aus244-245-819 Aus244-245-246 Aus244-245 Aus245 Aus244-245-819 Aus244-245-246 Aus244-245 Aus245 Aus244-245 Aus245	<i>Gladstone</i> Boyne Cutting-Light beacon destroyed; light buoy established Scientific instrument Bushy Islet-Scientific instrument Anchorage area Scientific instruments Hamilton Point-Harbour works northwestwards Light buoys Obstruction Harbour works Hamilton Point to Friend Point-Light buoys Barney Point to Grahams Creek-Dredging operations Depth information Light buoy Hamilton Point-Light buoys Pipelines Light buoys
<b>1081/2010</b>	Aus258	<i>Gladys Inlet</i> Shoaling; light buoys repositioned
<b>165/2011</b>	Aus268	<i>Gloucester Passage</i> Light beacon damaged
<b>918/2011</b>	Aus235-815	<i>Gneering Shoals</i> Obstruction
<b>51/2011</b> <b>1142/2011</b> <b>1143/2011</b>	Aus230 Aus230 Aus230-814	<i>Gold Coast Seaway</i> Shoaling Shoaling Dredging operations
<b>610/2011</b>	Aus245-246	<i>Hamilton Point to Friend Point</i> Dredging operations

## 85(T)/2012 AUSTRALIA - TEMPORARY AND PRELIMINARY NOTICES (continued)

<i>Notice</i>	<i>Charts affected</i>	<i>Locality and Subject</i>
<b>819/2011</b>	Aus249-250-AX0249E	<i>Hay Point</i> Shoaling
<b>1027/2011</b>	Aus249-250	Depth information
<b>1091/2011</b>	Aus249-250-AX0249E	Scientific instruments
<b>1151/2011</b>	Aus249-250-AX0249E	Depth information
<b>54/2012</b>	Aus249-250	Diving operations
<b>55/2012</b>	Aus249-250	Diving operations
<b>1275/2011</b>	Aus249-250-251-AX0249E	<i>Hay Point to Bailey Islet</i> Scientific instruments
<b>318/2010</b>	Aus251-823-824-AX0823E-AU421149	<i>Hesket Rock</i> Light beacon destroyed
<b>1197/2010</b>	Aus259-828	<i>Hinchinbrook Channel</i> Wreck
<b>1195/2010</b>	Aus252	<i>Hook Island</i> Nara Inlet-Light beacon destroyed; light buoy established
<b>930/2007</b>	Aus254-825	<i>Hook Reef</i> Beacon destroyed
<b>1188/2010</b>	Aus251-252-824	<i>Io Reef</i> Light beacon destroyed; light buoy established
<b>1051/2008</b>	Aus6	<i>Karumba</i> Light beacon withdrawn
<b>117/2011</b>	Aus6	Light buoy withdrawn
<b>1042/2011</b>	Aus6	Depth information
<b>757/2011</b>	Aus252	<i>Laguna Quays</i> Lights unlit; light beacons damaged
<b>758/2011</b>	Aus252	Shoaling
<b>113/2011</b>	Aus247-819-820	<i>Lisa Jane Shoals</i> Scientific instrument
<b>566/2011</b>	Aus259-267	<i>Lucinda</i> Exclusion zone
<b>1030/2011</b>	Aus250	<i>Mackay</i> Depth information
<b>1194/2010</b>	Aus252	<i>Macona Inlet</i> Light beacon destroyed; light buoy established
<b>1036/2011</b>	Aus256	<i>Magnetic Island</i> Scientific instruments
<b>52/2012</b>	Aus235	<i>Mooloolaba</i> Shoaling

## 85(T)/2012 AUSTRALIA - TEMPORARY AND PRELIMINARY NOTICES (continued)

<i>Notice</i>	<i>Charts affected</i>	<i>Locality and Subject</i>
		<i>Moreton Bay</i>
710/2008	Aus235-236	Light buoys established
161/2011	Aus236	Bramble Bay-Scientific instrument
372/2011	Aus236	Scarborough-Shoaling
373/2011	Aus235-236	North Banks-Scientific instruments
648/2011	Aus236	Bramble Bay-Bridge construction
1020/2011	Aus236	Wynnum-Wreck; light buoy
1024/2011	Aus236	Scarborough-Dredging operations
1201/2011	Aus236	Ship to ship transfer
1267/2011	Aus236	Hays Inlet-Obstructions
1322/2011	Aus236	Coochiemudlo Island-Wreck
48/2012	Aus235-236-237-238-814-815	Brisbane River-Depth information
		<i>Mourilyan</i>
826/2011	Aus258	Depth information
		<i>Mourilyan Harbour</i>
135/2010	Aus258-AU5258P1	Harbour works
		<i>Percy Isles</i>
1150/2011	Aus822-823-AX0822E-0823E	Wreck
		<i>Pioneer Bay</i>
1244/2006	Aus268	Airlie Beach-Harbour works; light buoys.
		<i>Pioneer Rocks</i>
759/2011	Aus252-253-824-825	Light beacon unlit
		<i>Point Danger to Point Lookout</i>
698/2011	Aus230-813-814	Scientific instruments
		<i>Port Alma</i>
209/2011	Aus265	Depth information
		<i>Port Douglas</i>
621/2010	Aus270-AU5270P1	Depth information
		<i>Proserpine River</i>
445/2010	Aus252-824-AU421148	Light beacon destroyed; light beacon damaged
		<i>Pumicestone Channel</i>
916/2011	Aus235-236	Beacon destroyed
1323/2011	Aus236	Ningi Creek-Beacons destroyed
		<i>Schooner Rock</i>
1187/2010	Aus251-824	Light beacon destroyed; light buoy established
		<i>Seaforth</i>
380/2010	Aus251-AU421148	Light beacon destroyed
		<i>Shute Harbour</i>
763/2010	Aus252-253-AU421148-5253P1	Wreck
		<i>South Barnard Islands</i>
221/2011	Aus258-829	Light buoys off station
		<i>Surprise Rock</i>
1191/2010	Aus252-253-824	Light beacon destroyed; light buoy established

## 85(T)/2012 AUSTRALIA - TEMPORARY AND PRELIMINARY NOTICES (continued)

<i>Notice</i>	<i>Charts affected</i>	<i>Locality and Subject</i>
<b>1156/2011</b> <b>59/2012</b>	Aus293-299 Aus293-299	<i>Thursday Island</i> Light beacon destroyed Depth information
<b>1133/2009</b> <b>1033/2011</b> <b>1034/2011</b> <b>1279/2011</b> <b>57/2012</b>	Aus257-AU5XX257 Aus256-257 Aus257 Aus257 Aus256-257	<i>Townsville</i> Light beacons withdrawn; light buoys established Ross River-Marina established Harbour works Harbour works Depth information
<b>1327/2011</b>	Aus249-823-AX0249E-0823E	<i>Victor Island</i> Mooring buoys to be established
<b>66/2010</b> <b>60/2012</b> <b>61/2012</b>	Aus4 Aus4 Aus4	<i>Weipa</i> Obstruction Depth information Mooring buoy established
<b>317/2011</b>	Aus252-253-824-825	<i>Whitehaven Bay</i> Lagoon Rock-Light beacon destroyed
<b>1189/2010</b>	Aus252-254-824	<i>Whitsunday Group</i> Shaw Island-Platypus Rock-Light beacon destroyed; light buoy established
<b>1192/2010</b> <b>1193/2010</b>	Aus252-253 Aus252-253-254	<i>Whitsunday Island</i> Whitehaven Beach-Light beacon destroyed; light buoy established Reef Point-Light beacon destroyed; light buoy established
<b>1394/2010</b> <b>422/2011</b>	Aus254 Aus252-254-824	<i>Whitsundays</i> The Narrows-Buoy off station Spitfire Rock-Light beacon destroyed
<b>1263/2010</b>	Aus830	<i>Yorkeys Knob</i> Wreck
<b>SOUTH AUSTRALIA</b>		
<b>1344/2010</b>	Aus347	<i>Cape Jaffa</i> Wreck westwards
<b>1226/2011</b> <b>1227/2011</b>	Aus4727 Aus4727	<i>Great Australian Bight</i> Seismic survey Scientific instruments
<b>1344/2011</b>	Aus781	<i>Gulf St Vincent</i> Obstruction
<b>573/2010</b>	Aus139-780	<i>MacDonnell Sound</i> Wreck
<b>720/2008</b> <b>226/2011</b>	Aus137 Aus130-138-781	<i>Port Adelaide</i> Shoaling Light beacon destroyed
<b>179/2011</b>	Aus778	<i>Port Augusta</i> Beacons established
<b>71/2012</b>	Aus133	<i>Wallaroo</i> Depth information

## 85(T)/2012 AUSTRALIA - TEMPORARY AND PRELIMINARY NOTICES (continued)

<i>Notice</i>	<i>Charts affected</i>	<i>Locality and Subject</i>
<b>268/2008</b>	Aus125	<i>Wirrina Cove</i> Shoaling
		<b>TASMAN SEA</b>
<b>84/2012</b>	Aus4601	<i>Tasman Basin</i> Light buoy off station
		<b>TASMANIA</b>
<b>1291/2011</b>	Aus171-173-796	<i>Adventure Bay to Pitt Water</i> Scientific instruments
<b>780/2011</b>	Aus173-795	<i>D'Entrecasteaux Channel</i> Scientific instrument
<b>1292/2011</b>	Aus179-800	<i>Flinders Island</i> Lady Barron-Light unreliable
<b>529/2010</b> <b>1229/2011</b>	Aus171-796-AU443147 Aus171-796	<i>Frederick Henry Bay</i> Whale Rock-Light beacon destroyed Scientific instruments
<b>91/2010</b>	Aus169	<i>Georges Bay</i> Wreck
<b>946/2011</b>	Aus172	<i>Hobart</i> Harbour works
<b>947/2011</b>	Aus796-797	<i>Pirates Bay</i> Light unlit
<b>582/2011</b> <b>1052/2011</b>	Aus172 Aus171-172	<i>River Derwent</i> Wreck Cornelian Bay-Wreck
<b>1416/2010</b>	Aus163-799	<i>Round Hill Point</i> Pipeline
<b>73/2012</b>	Aus173-794-795	<i>Second Lookout Point</i> Scientific instrument
<b>442/2011</b>	Aus799	<i>Stony Head</i> Scientific instrument northwards
		<b>TIMOR SEA</b>
<b>1333/2011</b>	Aus314-319-4721-4722-AX0314F- 0319F-4721F-4722F	<i>Osborn Passage</i> Drilling and pipelay operations
<b>66/2012</b>	Aus314-319-AX0314F-0319F	Seismic survey
<b>223/2009</b>	Aus312-4721-AX0312F-4721F- AU311126	<i>Sahul Banks</i> Navaid; racon non operational
<b>65/2012</b>	Aus314-315-319-AX0314F-0315F-0319F	<i>Sahul Banks to Joseph Bonaparte Gulf</i> Seismic survey
		<b>TORRES STRAIT</b>
<b>58/2012</b>	Aus292-293-296-299-376-700-839	<i>Adolphus Channel to Gannet Passage</i> AIS trial

## 85(T)/2012 AUSTRALIA - TEMPORARY AND PRELIMINARY NOTICES (continued)

<i>Notice</i>	<i>Charts affected</i>	<i>Locality and Subject</i>
<b>389/2010</b>	Aus376-377-840-AX60377-AU410143	<i>Stephens Islet</i> Wreck northwards
<b>1333/2010</b>	Aus376-377-840-AX60377	<i>Yorke Islands</i> Wreck
<b>VICTORIA</b>		
<b>1300/2009</b>	Aus801-AU439145	<i>Anderson Inlet</i> Shoaling
<b>1301/2009</b>	Aus181-182-AU439146	<i>Barry Beach</i> Shoaling
<b>83/2012</b>	Aus357-487-4644	<i>Cape Conran</i> Oilfield infrastructure removal southwards
<b>128/2011</b>	Aus348-349-787	<i>Cape Duquesne to Port Campbell</i> Scientific instruments
<b>1354/2010</b>	Aus181-802	<i>Corner Inlet</i> Shoaling
<b>839/2011</b>	Aus181	Light beacon destroyed
<b>884/2011</b>	Aus181	Midge Channel-Beacon destroyed
<b>1293/2011</b>	Aus181	Franklin Channel-Light buoy off station
<b>81/2012</b>	Aus181	Mooring buoys
<b>1153/2010</b>	Aus150-801	<i>Kilcunda</i> Exclusion zone
<b>1291/2010</b>	Aus357-AU439146	<i>Ninety Mile Beach</i> Obstructions
<b>82/2012</b>	Aus181-182	<i>Port Albert</i> Shoaling
<b>991/2011</b>	Aus141	<i>Port Campbell</i> Lights unlit
<b>796/2007</b>	Aus143-158	<i>Port Phillip</i> Obstruction
<b>942/2010</b>	Aus153-157	Geelong-Depth information
<b>1035/2010</b>	Aus143-158	South Channel-Obstruction
<b>1100/2010</b>	Aus154-155	Port Melbourne-Princes Pier-Harbour works
<b>77/2011</b>	Aus154	Appleton Dock-Harbour works
<b>183/2011</b>	Aus154	River Yarra-Light beacon removed
<b>232/2011</b>	Aus154	South Wharf-Harbour works
<b>584/2011</b>	Aus155	Light buoys withdrawn
<b>723/2011</b>	Aus144-158	Shoaling
<b>781/2011</b>	Aus143-158	South Channel-Shoaling; light buoy established
<b>993/2011</b>	Aus154	Port Melbourne-River Yarra-Depth information
<b>1110/2011</b>	Aus143	Patterson River-Harbour works
<b>1171/2011</b>	Aus144-158	South Channel-Shoaling
<b>1346/2011</b>	Aus144-158	Exclusion zones
<b>76/2012</b>	Aus143-158	Scientific instruments
<b>78/2012</b>	Aus153-157	Geelong-Harbour works
<b>79/2012</b>	Aus153-157	Corio Bay-Light buoy established
<b>1302/2009</b>	Aus181-AU439146	<i>Port Welshpool</i> Middle Ground Channel-Beacon destroyed

## 85(T)/2012 AUSTRALIA - TEMPORARY AND PRELIMINARY NOTICES (continued)

<i>Notice</i>	<i>Charts affected</i>	<i>Locality and Subject</i>
<b>514/2008</b> <b>1217/2010</b>	Aus150-151 Aus150-801-AU439145	<i>Western Port</i> Phillip Island-Shoaling northwards West Head-Light buoy off station
<b>WESTERN AUSTRALIA</b>		
<b>729/2006</b> <b>581/2011</b>	Aus109 Aus109	<i>Albany</i> Light beacon; light buoy Harbour works
<b>76/2010</b> <b>139/2010</b> <b>1088/2010</b> <b>124/2011</b> <b>622/2011</b> <b>776/2011</b> <b>988/2011</b>	Aus62-742-743-AU421115 Aus62-742-743-AU421115 Aus62-742 Aus62-742-743 Aus327-328 Aus327-328-742 Aus62-742	<i>Barrow Island</i> Scientific instruments Scientific instruments Anchorage northeastwards Scientific instrument Scientific instruments northwards Pipeline infrastructure Scientific instrument
<b>85/2010</b>	Aus115-334-335-755-AX0334E-0755E- AU434115	<i>Binningup</i> Offshore works; exclusion zone
<b>1337/2011</b>	Aus50-51	<i>Broome</i> Scientific instruments
<b>382/2011</b>	Aus319-320-AX0319F	<i>Browse Island</i> Scientific instrument
<b>493/2011</b> <b>1402/2010</b>	Aus115 Aus55-56-740-741	<i>Bunbury</i> Light beacon destroyed <i>Cape Lambert</i> Dredging operations
<b>1098/2011</b>	Aus315-318-AX0315F	<i>Cape Londonderry</i> Scientific instruments northeastwards
<b>278/2011</b>	Aus755-AX0755E-66002	<i>Comet Bay</i> Scientific instrument
<b>1165/2011</b>	Aus324	<i>Coulomb Point to Cape Boileau</i> Scientific instruments
<b>1034/2007</b> <b>911/2009</b> <b>936/2010</b>	Aus57-58-59 Aus57-58-741 Aus59-AU5XXX58	<i>Dampier</i> Depth information Obstruction Shoaling
<b>629/2010</b> <b>1045/2011</b>	Aus327 Aus327	<i>Dampier Archipelago</i> Scientific instruments northwestwards Platform installation; mooring buoys northwards
<b>68/2012</b>	Aus55-57-740-741	<i>Delambre Island to Dixon Island</i> Drilling operations
<b>337/2010</b>	Aus119-AU5119P1	<i>Esperance</i> Depth information
<b>436/2011</b> <b>1223/2011</b> <b>1339/2011</b>	Aus329 Aus328-329 Aus4723-AX4723F	<i>Exmouth Plateau</i> Scientific instruments Mooring buoys Seismic survey

## 85(T)/2012 AUSTRALIA - TEMPORARY AND PRELIMINARY NOTICES (continued)

<i>Notice</i>	<i>Charts affected</i>	<i>Locality and Subject</i>
<b>438/2011</b>	Aus113	<i>Fremantle</i> Depth information
<b>944/2011</b>	Aus117-AX70117	Harbour works
<b>1342/2011</b>	Aus117-AX70117	Parmelia Channel-Light buoy established
<b>518/2009</b>	Aus334-335-755-756-AX0334E-0755E-AU434115	<i>Geographe Bay</i> Scientific instrument
<b>946/2008</b>	Aus81	<i>Geraldton</i> Depth information
<b>451/2009</b>	Aus81-751	Light buoy off station
<b>941/2011</b>	Aus327-741	<i>Glomar Shoal</i> Scientific instruments westwards
<b>772/2011</b>	Aus315-AX0315F	<i>Lesueur Island</i> Drilling operations northeastwards
<b>1405/2010</b>	Aus327	<i>Montebello Islands</i> Mooring buoy off station northeastwards
<b>1222/2011</b>	Aus327-328-4723-AX4723F	Seismic survey northwards
<b>390/2011</b>	Aus61-62-63-327-328-742-743	<i>Montebello Islands to Barrow Island</i> Lit mooring buoys
<b>524/2010</b>	Aus112-116-117-334-754-755-AX0334E-0754E-0755E-63112-66002-70117-AU432115-433115	<i>Mullaloo to Warnbro Sound</i> Scientific instruments
<b>1408/2010</b>	Aus329	<i>North West Cape</i> Scientific instrument northwards
<b>579/2011</b>	Aus743	<i>Onslow</i> Scientific instruments
<b>792/2009</b>	Aus334-754-AX0334E-0754E-0755E-66002-AU332114-432115-433115	<i>Perth</i> Scientific instruments westwards
<b>878/2011</b>	Aus116	<i>Port Geographe</i> Shoaling
<b>722/2010</b>	Aus52-54-AU5XXX52	<i>Port Hedland</i> Depth information
<b>620/2011</b>	Aus52-53-54	Dredging operations
<b>1101/2011</b>	Aus52-53-54-739-740	Scientific instruments
<b>432/2011</b>	Aus55-327-740-741	<i>Port Walcott</i> Scientific instruments
<b>943/2011</b>	Aus327	<i>Rankin Bank</i> Scientific instruments northeastwards
<b>69/2012</b>	Aus64-328-743	<i>Thevenard Island</i> Scientific instruments
<b>1052/2008</b>	Aus40-732-733	<i>Yampi Sound</i> Comber Rock-Buoy off station

## 85(T)/2012 AUSTRALIA - TEMPORARY AND PRELIMINARY NOTICES (continued)

<i>Notice</i>	<i>Charts affected</i>	<i>Locality and Subject</i>
		<b>AUSTRALIA</b>
995/2011 283/2011	Aus4602	Summer time Light buoy withdrawn
		<b>EAST TIMOR</b>
727/2006	Aus901	<i>Dili</i> Light unlit
		<b>INDIAN OCEAN</b>
1290/2011	Aus334-400-608-754-4708-4709-4723-4725-AX0334E-0754E-4708F-4723F-66002	<i>Perth to Christmas Island</i> Survey operations
121/2011	Aus4070-4071	<i>Sumatera</i> Scientific instruments westwards
		<b>PACIFIC OCEAN</b>
133/2011	Aus399-4622	Scientific instruments
		<b>PAPUA NEW GUINEA</b>
429/2011	Aus508-628	<i>Badila Dabobona Reef</i> Light beacon altered southeastwards
1286/2011	Aus399-683-4622	<i>Bougainville Island</i> Lights unlit
66/2011	Aus379	<i>Caution Bay</i> Harbour works
709/2011	Aus377-379-AX60377	<i>Eastern Fields</i> Reef delineation
983/2011 1158/2011	Aus378-502-4620-4622-AX4620F Aus378-502	<i>Gulf of Papua</i> Racon Works
967/2005	Aus646	<i>Madang</i> Horizontal datum anomaly
1095/2011	Aus379-398-502-4620-AX4620F	<i>Omati River to Caution Bay</i> Pipeline
404/2008	Aus379-505-4620	<i>Port Moresby</i> Fish aggregation device southwards
982/2011	Aus377-378-379-AX60377	<i>Port Moresby to Kerema Bay</i> Seismic survey

## HYDROGRAPHIC REPORTS

<i>Locality</i>	<i>Report</i>	<i>Ship/Authority</i>	<i>Observer</i>
QLD – Karumba	Port Infrastructure	MV <i>Wunma</i>	S Hinchey

**NAVIGATION WARNINGS**

The following radio messages have been received during the period to 13 January 2012. Signal copies of these messages may be destroyed. It is recommended that the reprint of Navigational Warnings should be kept in a file or a book divided into areas. Cancellation should be made on receipt of signals and reprints.

Rigs on location other than those listed in the latest Section III summary are the subject of Radio Navigational Warnings. Rigs in transit will not be the subject of Warnings.

**AUSCOAST WARNING****2011**

- 329 Special purpose vessel *Sapura 3000* conducting pipe laying operations between 12° 39'·5 S 124° 31'·7 E and 12° 30'·0 S to 124° 25'·0 E. 2·5M clearance requested.
- 330 Special purpose vessel *Viking* conducting seismic survey in an area bounded by 19° 00'·0 S to 21° 00'·0 S and 111° 27'·0 E to 114° 06'·0 E. 6·0M clearance requested.
- 331 Cancelled.
- 332 Cancelled.
- 333 AIS navigational aid with the MMSI 995031039 established in position at Gannet Passage buoy 10° 35'·49 S 141° 52'·41 E.
- 334 Cancelled.
- 335 Cancelled.
- 336 Drill rig *Stena Clyde* in position 38° 20'·97 S 141° 41'·01 E. 0·5M clearance requested
- 337 Four lit mooring line surface buoys laid within 2M radius of position 20° 04'·57 S 113° 49'·55 E.
- 338 Four lit mooring line surface buoys laid within 2M radius of position 20° 28'·79 S 114° 03'·50 E.
- 339 Drill rig *Nan Hai 6* in position 21° 26'·03 S 114° 01'·95 E. 2·5M clearance requested.
- 340 Drill rig *Ensco 104* in position 20° 17'·23 S 116° 16'·31 E. 2·5M clearance requested.
- 341 Cancelled.
- 342 Cancelled.
- 343 Cancelled.

**2012**

- 001 Special purpose vessel *Seahorse Standard* conducting seismic survey in an area bounded by 19° 47'·0 S to 20° 03'·0 S and 115° 00'·0 E to 115° 04'·0 E. 2·0M clearance requested.
- 002 Cancelled.
- 003 Cancelled.
- 004 Cancelled.
- 005 Cancelled.
- 006 Drill rig *Ocean Patriot* in position 12° 08'·70 S 124° 58'·15 E. 2·5M clearance requested.
- 007 Cancelled.
- 008 Four unlit special cylindrical buoys established in the vicinity of position 38° 13'·0 S 148° 24'·0 E. 2·0M clearance requested.
- 009 Drill rig *Atwood Eagle* in position 19° 44'·70 S 113° 15'·20 E. 2·5M clearance requested.
- 010 Cancelled.
- 011 Cancelled.

**NAVAREA X WARNINGS****2011**

- 026 Cancelled.

**2012**

- 001 Cancelled.

**Navigational warnings in force as at 130001UTC JAN 12.****Auscoast**

- 2011** 288 289 290 293 318 319 321 323 324 328 329 330 333 336 337 338 339 340
- 2012** 001 006 008 009

**Navarea X**

- 2011** 018

**Summary of mobile drilling rigs as at 130001UTC JAN 12.**

<i>Name</i>	<i>Position</i>
Stena Clyde	38° 20'.97 S 141° 41'.01 E
Ocean Patriot	12° 08'.70 S 124° 58'.15 E
Ensco 109	12° 40'.20 S 124° 32'.22 E
Transocean Legend	20° 31'.70 S 116° 40'.60 E
Ensco 104	20° 17'.23 S 116° 16'.31 E
Atwood Osprey	20° 24'.51 S 114° 50'.98 E
Nan Hai 6	21° 26'.03 S 114° 01'.95 E
Ocean America	21° 20'.10 S 113° 36'.50 E
Atwood Eagle	19° 44'.70 S 113° 15'.20 E

**NAVAREA XIV WARNINGS**

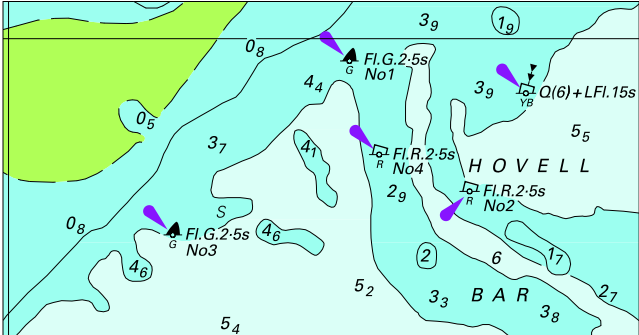
Nil.

**Navarea XIV warnings in force as at 130001UTC JAN 12.**

Nil.



To accompany Australian Notice to Mariners 30/2012

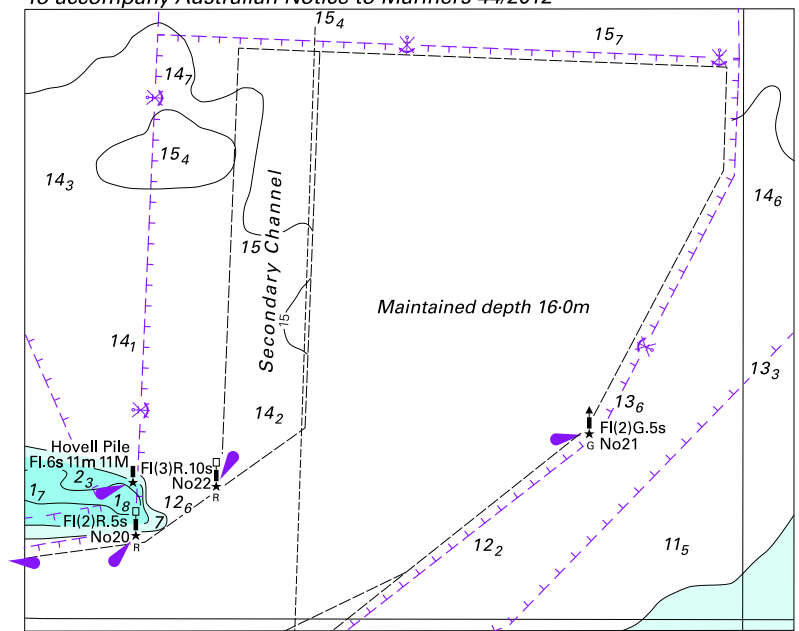


© Commonwealth of Australia 2012

Block for chart Aus299

(84.1 x 44.2mm)

To accompany Australian Notice to Mariners 44/2012



Block for chart Aus 158 © Commonwealth of Australia 2012

(101.8 x 82.4mm)