

PRINTED COPIES ARE UNCONTROLLED

AUSTRALIAN HYDROGRAPHIC SERVICE MANAGEMENT SYSTEM DOCUMENT

© Commonwealth of Australia 2010.

**SPECIFICATION -
AUSTRALIAN
PAPER CHART TEXT FEATURES
&
ENC 'OBJNAM' CONVENTIONS

VERSION 4**

Prepared by
Australian Hydrographic Office
8 Station Street Wollongong NSW 2500, Australia
Phone: (02) 4223 6500 Fax: (02) 4223 6599
© Commonwealth of Australia

Document Review Date: January 2012

Document Owner:

DDCSS
(J. WOOTTON)

Authorised by:

DCS
(M.E. PRINCE)

**This document is authorised via the electronic signature capability in the DRMS
Approval delegations and authorisation history can be viewed in the DRMS**

THIS DOCUMENT IS UNCONTROLLED ONCE PRINTED
(Conditions of use are specified in SP_01_00_AA6998)

Document History

The version status of this document is the same for all pages			
Version	DESCRIPTION OF CHANGE	Date	Authorised
-	Original. Compiled by JW, CR, GW, endorsed by ENCTWG. Published as "Type Selections Specification Key For Paper Chart Text Features Including S-57 Object Naming Conventions For ENC Compilation", version 1.	20 Jul 01	HPG
-	Update. Compiled by ENCTWG. Published (as above), version 2	13 Jun 03	HPG
-	Update. Compiled by CTWG. Published as A97391 version 1.0 in DRMS (outside QMS). Cover page labelled version 3.	12 Jul 04	HPG
-	Minor change. Compiled by A/HPG. Published as A97391 version 2.0 in DRMS (outside QMS). Cover page labelled version 4.1.	19 Dec 06	A/HPG
Version 1	Format change and bought into QMS as new document SPEC_03_05_A230048 Specification - AHO Paper Chart Text Features and ENC OBJNAM Conventions. Supersedes non-QMS main document (A97391) plus annex A (A97392), Annex B (A97394), Annex C (A97396), Annex D (A97397) and Annex E (A97398).	Apr 07	DCIM
2	New version – general updating throughout	Nov 07	DCIM
3	New version	09 Jan 09	DCIM
	Entire document reviewed and editorial changes made throughout to correct inconsistencies. Unless listed below, these changes do not alter the guidance or intent in the document. All changes to version 3 have been applied in blue text.	20 Jul 10	DDCSS
	Update entire document for changes in AHO acronyms and position titles.	20 Jul 10	DDCSS
	Update all features related to radio position fixing stations to reflect Australian policy to no longer depict these features on Australian nautical charts (Australian Paper Chart Specifications clause B-480).		
	Amend Entry for Two-Way Route to Italic text (enquiry from E. Cakar).	27 Mar 09	DDCSS
	Annex D: Add new specification for cautionary/descriptive notes for line spacings to be used within notes.	07 Sep 09	DDCSS
	Annex D: Add list of qualifying terms used in Chart titles (enquiry from G. Cook).	23 Nov 09	DDCSS
4	New version to incorporate above amendments	21 Jul 10	DCS

© Commonwealth of Australia 2010.

This work is copyright. Apart from any use permitted under the *Copyright Act 1968*, no part may be reproduced by any process, adapted or commercially exploited without prior written permission from the Commonwealth represented by the Australian Hydrographic Service.

CONTENTS

1. PURPOSE 4

2. SCOPE 4

3. REFERENCES 4

4. DEFINITIONS..... 4

5. RESPONSIBILITIES..... 4

6. EXPLANATORY NOTES..... 5

ANNEX A – PAPER CHART TEXT FEATURE AND S-57 / ENC OBJECT NAME..... 7

ANNEX B – BORDER AND MARGINAL DETAILS 45

ANNEX C - COPYRIGHT / RELATED PUBLICATION DETAILS 47

ANNEX D - TITLE, CONSTRUCTION AND CHART NOTES..... 48

ANNEX E - TIDAL STREAM AND TIDAL LEVEL PANELS..... 49

ANNEX F - ZOC DIAGRAMS 50

ANNEX G – NOTICES TO MARINERS BLOCK MARGINALIA 51

1. PURPOSE

a) The purpose of this document is to provide specifications and guidance on the text conventions to be used in the composition of paper nautical charts produced by the Australian Hydrographic Service (AHS), and the comparable population of the Object Name ("OBJNAM") attribute for Feature Objects in Electronic Navigation Charts (ENCs).

2. SCOPE

a) This document is applicable to all compilers, reviewers and quality assurance staff involved in the production of Australian paper nautical charts (and their Raster / Geotiff derivatives), as well as all official ENCs produced by or on behalf of the AHS.

b) This specification is not applicable to Military Geospatial Intelligence products. However, in producing military charts consisting of additional data overlaid on an otherwise standard paper navigation chart, every effort should be made to leave the existing text unaltered, and follow the intent of this document for additional text, except where this conflicts with the specific requirements of the military chart.

3. REFERENCES

a) This document is to be read in conjunction with the following documents as applicable:

- i) SPEC_03_05_AA223480 Australian Paper Chart Specifications
- ii) SPEC_03_05_AA34159 Australian Use of the Object Catalogue (AUOC 2.1).

4. DEFINITIONS

a) Nil.

5. RESPONSIBILITIES

a) The Deputy Director Charting Standards and Specifications (DDCSS) is responsible for the ongoing maintenance of this Specification. Deputy Director Chart Production and Maintenance (DDCPM) is responsible for the adherence of all relevant charts to this Specification, and shall provide input to DDCSS on updates to this Specification (in consultation with the Charting Technical Working Group (CTWG)). DCS shall approve updates to this Specification.

6. EXPLANATORY NOTES

- a) The specifications in this document are based on the use of the true type UNIVERS text font with 1 point = 0.25mm. The document is in alphabetical order in terms of paper chart text types.
- b) The "S-57 Object Class" column indicates the Object Class for which the attribute OBJNAM is to be populated only where the object is named. It is not designed to indicate the population of OBJNAM for paper chart descriptive terms, which are translated to attribute values.
- c) All text is to be in upright text unless stipulated as Italics in the Type column. Text shown within quotation marks in the Text column is to be represented on the chart as indicated.
- d) NA in the "S-57 Object Class" column indicates paper chart specific text having no object name translated to ENC, but translates to an attribute value. NA in the "Type" column indicates an object which is named, and may be populated for ENC, but which is not shown as a named object on paper charts, e.g.:

Text		Type	S-57 ENC Object Class	INT Ref
Arc of Visibility Colours		6 pt Medium U/L Black	NA	P 20-46

indicates text shown on paper charts which is descriptive or annotative text applying to paper chart symbology only, but are not the names of S-57 objects and are therefore not applicable to ENC, whereas:

Text		Type	S-57 ENC Object Class	INT Ref
Anchorage (recommended)		NA	ACHARE	N 10

indicates that the attribute OBJNAM (if a name exists for the object) may be populated for the object class **ACHARE**, but the name is not applicable to paper charts and would not be shown.

- e) Point sizes and line weights shown in this table are the minimum to be used for the particular text, if an option is given.
- f) The following table is to be used for product compilation only. Issues regarding the population of the attribute OBJNAM for objects in DHDB Validated Data are to be addressed in DHDB Work Instructions.
- g) Definitions of Important, Less Important and Unimportant, listed in the Text column, are given for guidance only. Other factors to be considered when determining appropriate text sizes and line weights include scale and intended usage of the chart, existence of larger scale charts in the geographical area of concern, and density of information depicted in the geographic area.

h) Where the charted name of a feature is incorporated in the title of the chart, the minimum point size and line weight to be used for the charted name must be 9pt Medium.

i) * Master object is the structure (e.g. **BOY???**, **BCN???**, **LNDMRK**, **BUISGL**). If the structure object is unknown then the **LIGHTS** object becomes the master (refer to S-57 Appendix B.1 - Annex A, Use of the Object Catalogue for ENC, Clauses 12.1.1, 12.1.2).

j) Abbreviations used are:

i) pt Point - 1 point = 0.25mm e.g. 6 pt = 1.5mm

ii) U/L Upper/Lower Case

Annex:

- A. Alphabetical Listing of Text Features
- B. Border And Marginal Details
- C. Copyright / Related Publication Details
- D. Title, Construction And Chart Notes
- E. Tide And Tidal Stream Panels
- F. ZOC Diagrams
- G. [Notices to Mariners Block Marginalia](#)

ANNEX A – PAPER CHART TEXT FEATURE AND S-57 / ENC OBJECT NAME

A				
Text		Type	S-57 ENC Object Class	INT Ref
Abbyssal Plain		See Oceanographic Features	SEAARE	
Adjoining Chart - Reference to		See Chart Reference - Adjoining Chart and Annex B .	NA	A
Administration Area			ADMARE	
	Description (e.g. Aboriginal Reserve)	8 pt Medium U/L Black. A larger point size, capitals and/or spacing may be used in large areas. 7 pt may be used in congested areas.	NA	
	Named	Refer to related feature (e.g. Town, Important)	ADMARE	
Aero Light		See Light - Aero	LIGHTS	P 60
Aero Radiobeacon (Aero RC)		No longer depicted on Australian nautical charts	NA	S 16
AHO Address		8 pt Light U/L Black. See Annex B.	NA	
Airfield		6 pt Light U/L Black. A larger point size and/or capitals may be used for major airports or airfields covering a large portion of the chart.	AIRARE	D 17
Air Obstruction Light		See Light - Air Obstruction	NA	P 61
Air Radiobeacon		No longer depicted on Australian nautical charts	NA	S 16
Anchor Berth Identifier		6 pt Medium Capitals Magenta	ACHBRT	N 11
Anchorage Area Name, Number or Type		6 pt Medium U/L Italics Magenta	ACHARE	
Anchoring Prohibited		NA	RESARE (see also Object Classes carrying attribute RESTRN)	N 20
Anchorage (recommended)		NA	ACHARE	N 10
Arc of Visibility Colours		6 pt Medium U/L Black	NA	P 40-46
Archipelago		8 pt Medium U/L Black. The use of a larger point size, capitals and/or spacing will depend on size of Island group and coverage	LNDRGN, C_AGGR	
Area to be Avoided		See relevant nature of restriction	NA	M 29.2
Associated Publications Note		Refer Annex C		A 20
Atoll		7 pt Medium U/L Italics Black. The use of a larger point size, capitals and/or spacing will depend on area of feature.	SBDARE, SEAARE, C_AGGR	
Avenue		See Road - Named	ROADWY	
Aus Chart Number		24 pt Medium Black. See Annex B .	NA	A 1
Awash		6 pt Light U/L Italics Black	NA	

B				
Text		Type	S-57 ENC Object Class	INT Ref
Bank Name		7 pt Medium U/L Italics Black. The use of a larger point size, capitals and/or spacing will depend on area of feature.	SEAARE, C_AGGR	
Barge		6 pt Light U/L Italics Black	NA	Q 53
Baseline		See Territorial Sea - Baseline	NA	
Basin		See Dock . See Oceanographic Features for sea basins. See Lock Basin	NA	
Baths		6 pt Light U/L Black	NA	
Bathymetric Features (canyons, plateaus, trenches etc.)		7 pt Medium U/L Italics Black. The use of a larger point size, capitals and/or spacing will depend on area of feature.	SEAARE	O
Bay, Important (Major section of Sailing Directions). Refer Para 6(g)		7 pt Medium Capitals Italics Black. The use of a larger point size and/or spacing will depend on area of feature.	SEAARE	
Bay, Less important (Bold text in sailing directions). Refer Para 6(g).		7 pt Medium U/L Italics Black. The use of a larger point size, capitals and/or spacing will depend on area of feature.	SEAARE	
Bay, Unimportant (All other cases). Refer Para 6(g).		7 pt Light U/L Italics Black	SEAARE	
Beach (Named)		7 pt Light U/L Black. Spacing may be used for long beaches	COALNE, LNDGRN	
Beacons			Master Object*	Q
	Clearing line	6 pt Medium U/L Black (degrees)	NA	M 2
	Colour text	4 pt Medium Capitals Black	NA	Q 81-83, 102,110
	Consol (description)	6 pt Medium U/L Magenta	NA	S 13
	Consol (name)	6 pt Medium U/L Black	RDOSTA	
	Description text	6 pt Medium U/L Black	NA	P 3-5 Q 80,101
	In line	6 pt Medium U/L Black	NA	M 1-3
	Leading	6 pt Medium U/L Black	NA	M 1
	Light description	6 pt Medium U/L Black	NA	Q 7-8
	Named or numbered	6 pt Medium U/L Black	Master Object*	Q 10
	Recommended track	6 pt Medium U/L Black (degrees)	RECTRC	M 3
	Refuge	6 pt Medium U/L Black	NA	Q 124
	Transit	6 pt Medium U/L Black (degrees)	NA	M 2
Bearings on Recommended Track		6 pt Medium U/L Black	NA	M 3-4
Benchmark		6 pt Medium U/L Black (Fleet charts only).	CTRPNT	B 23
Berth			BERTHS	
	Numbers	6 pt Medium Magenta (inside circle)	BERTHS	F 19, Q 42
Berth	Letters	6 pt Medium Capitals Magenta (inside circle or rectangle)	BERTHS	
	Name	7 pt Light U/L Black. Spacing may be used for long berths.	BERTHS, SLCONS	

Block - Notices to Mariners	Border text	Refer Annex G	NA	
Boarding Place - Pilot		See Pilot - Boarding Place	PILBOP	T 1
Boat Harbour			HRBFAC	
	Description	6 pt Light U/L Italics Black (only if symbol U 1.1 cannot be used)	NA	
	Named	NA	HRBFAC	
Boat/Ship Lift		See Small Craft - Facility	SMCFAC	G 131
Bollard		NA	MORFAC (Nav 6 only)	G 181
Bombora		7 pt Medium U/L Italics Black	See Water Turbulence	
Border Information		Refer Annex B		A
Bottom Quality		6 pt Light U/L Italics Black (half space between natures of surface).	NA	J 1-12, 20,30-39
Boulders			LNDMRK, UWTROC	
	Description	6 pt Light U/L Italics Black (for intertidal boulders only).	NA	G 28
	Named	6 pt Medium U/L Black. Intertidal boulder names are to be in Italics	LNDMRK, UWTROC	
Boxed Publications Note		Refer Annex C	NA	A 20
Breaker, Description note (Br)		6 pt Light U/L Italics Black	NA	K 17
Breaks, Description note		6 pt Light U/L Italics Black. 7 pt and/or spacing may be used for large areas.	NA	
Breakwater (Named)		7 pt Light U/L Black. A larger point size and/or medium and/or spacing may be used for important features.	SLCONS	
Bridge			BRIDGE	D 20-24
	Clearance height	See Height above High Water - Vertical Clearance	NA	D 22
	Horizontal Clearance	See Clearance - Horizontal	NA	D 21
	Named	6 pt Light U/L Black. A larger point size and/or Capitals may be used for larger bridges or bridges on large scale charts.	BRIDGE	
	Type of	6 pt Light U/L Black	NA	D 23-24
Building			BUISGL	D 5,6 G 60-98
	Description	6 pt Light U/L Black. 7 pt and/or spacing may be used on large scale charts.	NA	D 6
	Named	6 pt Light U/L Black. 7 pt and/or spacing may be used on large scale charts.	BUISGL . Refer also to associated feature (Yacht Club etc.) for which OBJNAM is populated for the relevant Object Class only.	
Built Up Area		See Town, Important	BUAARE, ADMARE	
Buoys			Master Object*	Q 7,8,11-41,50-71, 130
	Colour text	4 pt Medium Capitals Italics Black	NA	Q 2-5
	Light description	6 pt Medium U/L Italics Black	NA	Q 7-8
	Mooring - light	6 pt Medium U/L Italics Black	NA	Q 41
	Mooring - single point	6 pt Medium Capitals Black	NA	L 12

	Mooring trot - number/letter	6 pt Medium Magenta (inside circle)	BERTHS	Q 42
	Name or number	6 pt Medium U/L Italics Black	Master Object*	Q 11
Buoys	ODAS (description)	6 pt Medium Capitals Italics Black	NA	Q 58
	Private (description)	6 pt Light U/L Italics Black " <i>(priv)</i> "	NA	Q 70
	Radar	6 pt Medium U/L Italics Magenta	NA	S 3.6
	Seasonal	6 pt Light U/L Italics Black e.g. " <i>(Apr-Oct)</i> "	NA	Q 71
	Supplementary (refer CATSPM)	6 pt Light U/L Italics Black	NA	Q 50-53
	Waverider	6 pt Light U/L Italics Black	NA	

C				
Text		Type	S-57 ENC Object Class	INT Ref
Cable Area			CBLARE	
	Description	6 pt Medium U/L Italics Magenta	NA	L 30, 31
	Named	7 pt Medium U/L Italics Magenta. 8 pt, 9 pt and/or spacing may be used for large areas.	CBLARE	
Cables			CBLSUB, CBLOHD	D 26,27 L 30-32
	Legend, land	6 pt Light U/L Black	NA	
	Legend, submarine	6 pt Medium U/L Italics Magenta. 8 pt, 9 pt and/or spacing may be used for cables of greater length.	NA	
	Named (submerged)	6 pt Medium U/L Italics Magenta. 8 pt, 9 pt and/or spacing may be used for cables of greater length.	CBLSUB	
	Overhead	6 pt Medium Black	CBLOHD	
	Transporter etc.	NA	NA	
Canal			CANALS	F 40
	Description	7 pt Light U/L Italics Black	NA	
	Named	7 pt Light U/L Italics Black	CANALS	
Canyon		See Oceanographic Features	SEAARE	
Cape		See Point	LNDRGN	
Cargo Transhipment Area			CTSARE	
	Description	6 pt Medium U/L Italics Magenta	NA	N 64
	Named	6 pt Medium U/L Italics Magenta	CTSARE	
Causeway			CAUSWY	F 3
	Description	6 pt Light U/L Black	NA	F 3
	Named	6 pt Light U/L Black	CAUSWY	
Cautionary Notes (in title)		Refer Annex D . These Notes must be block justified to 50mm.	NA	A 16
Cay (above HWL)			LNDARE	
	Description	7 pt Light U/L Black	NA	
	Named	7 pt Light U/L Black	LNDARE	G 3
Cay (intertidal)			SEAARE	
	Description	7 pt Light U/L Italics Black	NA	G 3
	Named	7 pt Light U/L Italics Black	SEAARE	
Channel, Important (Major section or bold text in Sailing Directions). Refer Para 6(g)		7 pt Medium Capitals Italics Black. A larger point size and/or spacing may be used for features covering large areas.	SEAARE	
Channel, Less Important (Listed in Sailing Directions). Refer Para 6(g)		7 pt Medium U/L Italics Black. A larger point size and/or spacing may be used for features covering large areas.	SEAARE	
Channel, Unimportant (All other cases). Refer Para 6(g)		7 pt Light U/L Italics Black. A larger point size and/or spacing may be used depending on the size of the feature.	SEAARE	
Chart Crest		NA	NA	A 12
Chart Dimensions		Refer Annex B	NA	A 8
Chart, Marginal Information		Refer Annex B	NA	A

Chart Number			NA	
	Aus Charts	Refer Annex B	NA	A 1
	INT Charts	24 pt Medium Capitals Magenta	NA	A 3
Chart Reference			NA	
	Adjoining chart	9 pt Medium U/L Magenta	NA	A 19
	Larger scale chart (with limits)	9 pt Medium U/L Magenta	NA	A 18
	Larger scale chart (no limits)	9 pt Medium U/L Magenta	NA	
	Plan on another sheet	9 pt Medium U/L Magenta	NA	
	Plan on same sheet	9 pt Medium U/L Magenta	NA	A 18
Chart Scale		Refer Annex D	NA	A 13
Chart - Title		Refer Annex D	NA	A 10
Checkpoint		See Custom Office	CHKPNT	
Chimney			LNDMRK	
	Description	6 pt Light U/L Black. Used for annotation of position circle or indication of multiple objects only.	NA	E 22
	Named	6 pt Light U/L Black	LNDMRK	
Church			BUISGL, LNDMRK	E 10-18
	Description	6 pt Light U/L Black.	NA	E 10,18
	Named	6 pt Light U/L Black.	BUISGL, LNDMRK	
City			BUAARE, ADMARE	D 1-4
	On Large/Medium scale charts	See Town, Important	BUAARE, ADMARE	D 1-3
	On Small scale charts	7 pt Medium Capitals Black	BUAARE	D 3,4
	On INT Charts	7 pt Medium U/L Black	BUAARE	D 3,4
Clearance			NA	
	Vertical	See Height above High Water - Vertical Clearance	NA	D 20
	Horizontal	6 pt Medium Black	NA	D 21
Clearing Bearing		See Transit Bearing	NA	M 2
Cliff			COALNE, SLOTOP	C 3
	Description	6 pt Light U/L Black. The use of 7 or 8 pt and/or spacing will depend on length of feature.	NA	
	Named	6 pt Light U/L Black. The use of 7 or 8 pt and/or spacing will depend on length of feature.	COALNE, SLOTOP	
Coastal Relief Feature		See Beach (Named) , Cliff , Marsh , Shingly Shore , Stony Shore	COALNE, LNDRGN, SLOTOP, SLOGRD	
Coastguard Station			CGUSTA	
	Description (CG)	6 pt Light Capitals Black	NA	T 10,11
	Named	6 pt Light U/L Black	CGUSTA	
Company (Named)		6 pt Light U/L Black	BUISGL, PRDARE, C_AGGR	
Compass Rose Degrees		7 pt Light Magenta	NA	B 70
Contiguous Zone - Seaward Limit		NA	NA	N 44
Consol Beacon		See Beacons - Consol	NA	S 13

Conspicuous Features			Relevant S-57 Object Class	E 2
	Description	6 pt Medium Capitals Black. If the text size for the feature is defined in this document as larger than 6 pt, the capitals text must be shown in that point size. This applies to all features including buildings, mountains etc.	NA	E 2
	Named	6 pt Medium Capitals Black. If the text size for the feature is defined in this document as larger than 6 pt, the capitals text must be shown in that point size. This applies to all features including buildings, mountains etc.	Relevant S-57 Object Class	
Continental Shelf		6 pt Medium U/L Italics Magenta	NA	N 46
Contour Value			NA	C 10,12 I 30,31
	Depth	5 pt Light Black	NA	I 30,31
	Land	4 pt Light Black	NA	C 10,12
Control Point			CTRPNT, LNDELV	B 20-24
	Description	6 pt Medium Black	NA	
	Named	6 pt Medium Black	CTRPNT, LNDELV	
Conveyor			CONVYR	D 25
	Description	6 pt Light U/L Black	NA	
	Named	NA	CONVYR	
Copyright Note		Refer Annex C	NA	A 5
Coral Reef (Named)		See Reef - Named	SBDARE, SEAARE, C_AGGR	
Corner Co-ordinates		Refer Annex B		A 9
Cove		See Bay	SEAARE	
Crane			CRANES	F 53
	Description	6 pt Light U/L Black	NA	F 53
	Named	NA	CRANES	
Creek		See River	RIVERS, SEAARE	C 20,21
Crown Copyright		Refer Annex C	NA	A 5
Current			CURENT	H 42,43
	Meter	6 pt Light U/L Italics Black	NA	Q 59
	Named	7 pt medium Capitals Italics Black. The use of 8 pt and/or spacing is dependant on the area of the current.	CURENT	
	Rates and/or seasons	6 pt Light U/L Italics Black. For rates of named current use Medium text	NA	H 43
	Reference to Note	7 pt Light U/L Italics Black. For reference to named current use Medium text	NA	
Customs Limit		NA	CUSZNE	N 48
Custom Office (Named only)		6 pt Light U/L Black. 7 pt may be used on large scale charts.	BUISGL	F 61
Cutting		NA	NA	D 14

D				
Text		Type	S-57 ENC Object Class	INT Ref
Dam			DAMCON, LAKARE	F 43,44
	Description	6 pt Light U/L Black.	NA	F 44
	Named	NA	DAMCON, LAKARE	
Dangers, Intertidal Comment		6 pt Light U/L Italics Black	NA	
Danger Zone (Buoy)		6 pt Light Capitals Italics Black	NA	Q 50
Daymark		NA	DAYMAR	Q 101,102
Deep Water Route			DWRCTL, DWRTPT, C_AGGR	M 27
	Description	8 pt Medium Capitals Italics Magenta	NA	M 27
	Named	8 pt Medium U/L Italics Magenta	DWRCTL, DWRTPT, C_AGGR	
Degaussing Range		6 pt Medium U/L Italics Magenta	NA	N 25
Depth Contour		See Contour Value - Depth	NA	I 30,31
Depth, Maintained		See Dredged Area - Maintained	NA	I 23
Depths in Metres		Refer Annex B	NA	
Descriptive Text (On land)		6 pt Light U/L Black. 7 pt and/or spacing may be used for large areas	NA	
Designated Shipping Area (DSA)	Reference to Note	7 pt Medium Italics Magenta - "DSA (see Note)"	ADMARE	
Diffuser		See Obstruction	NA	L 43
Dimension, Chart		Refer Annex B	NA	A 8
Direction Light		See Light - Direction	Master Object*, LIGHTS	P 30
Directional Radiobeacon		No longer depicted on Australian nautical charts	NA	S 11
Dish Aerial		NA	LNDMRK	E 31
Distance Mark		6 pt Light L Black. 6 pt Light L Italics Magenta is to be used if the mark is in the water.	NA	F 40
District Name		7 pt Medium Capitals Black. The use of a larger point size and/or spacing will depend on area of feature.	LNDRGN, ADMARE	
Disused (Jetty, Wharf, Platform)	Description	See Ruins	NA	F 33
Dock				F 25-28
	Floating	7 pt Light U/L Italics Black	FLODOC	F 26
	Graving (dry dock)	6 pt Light U/L Black. 7 pt may be used on large scale charts.	DRYDOC	F 25
	Wet (tidal basin)	6 pt Light U/L Italics Black. 7 pt may be used on large scale charts.	DOCARE	F 28
	Wet (non-tidal basin)	6 pt Light U/L Italics Black. 7 pt may be used on large scale charts.	DOCARE	F 27
Dolphin			MORFAC	F 20
	Description	6 pt Medium U/L Black	NA	F 20
	Named	NA	MORFAC	
Drainage Feature		6 pt Light U/L Black	NA	
Dredged Area			DRGARE	I 21-23

Dredged Area	Maintained	7 pt Medium U/L Italics Black. The use of Capitals and/or spacing will depend on area of feature.	NA	I 23
	Not Maintained	7 pt Medium U/L Italics Black. The use of Capitals and/or spacing will depend on area of feature.	NA	I 21-22
Dredging Area		7 pt Medium U/L Italics Magenta	NA	N 63
"Dries"	Description	6 pt Light U/L Italics Black. 7 or 8 pt and/or spacing may be used for large drying areas	NA	
Drying Heights		See Sounding	SOUNDG	I 15
Dumping Ground (Explosives, Chemical Waste)		6 pt Medium U/L Black. The use of a larger point size and/or spacing will depend on area of feature.	NA	N 23-24
Dunes, Sand			LNDRGN, SLOGRD	C 8
	Description	6 pt Light U/L Black. 7 pt and/or spacing may be used for large areas	NA	C 8
	Named	6 pt Light U/L Black. 7 pt and/or spacing may be used for large areas	LNDRGN, SLOGRD	
Dyke/Levee		NA	NA	F 1

E				
Text		Type	S-57 Object Class	INT Ref
Ebb Tide Stream - Rates		See Tidal Stream - Rates	NA	H 40,41
Edition number – text and number		Refer Annex B	NA	
Elevations		6 pt Medium Black	LNDELV	C 11
Embankment		NA	NA	D 15
Entry Prohibited		See Prohibited Area	NA	N 31
Environmentally Sensitive Sea Area (ESSA)	Reference to Note	7 pt Medium Italics Green - "ESSA (see <i>GBRMP Note</i>)"	RESARE	N 22
Existence Doubtful (ED)		6 pt Light Capitals Italics Black	NA	I 1
Exclusive Economic Zone		8 pt Medium Capitals Italics Magenta	NA	N 47
Explanatory Notes (Title - Legend Information)		Refer Annex D	NA	A 11

F				
Text		Type	S-57 ENC Object Class	INT Ref
Factory		See Company (Named)	BUISGL, PRDARE, C_AGGR	
Fairway		NA	FAIRWY, SEAARE	
Fence		NA	NA	
Ferry				M 50,51
	Cable	6 pt Light U/L Black	NA	M 51
	Free Moving	NA	NA	M 50
	Terminal	6 pt Light U/L Black	HRBFAC	
Firing Danger area		See Military Exercise Area	NA	N 30
Fishery Zone		NA	NA	N 45
Fishing Ground		NA	NA	
Fish Haven		6 pt Light U/L Italics Black	NA	K 46
Fish Traps		6 pt Light U/L Italics Black	NA	K 45
Fishing Harbour		NA	HRBFAC	F 10
Fishing Prohibited		NA	NA	N 21
Fishing Stake		NA	NA	K 44.1
Flagstaff		NA	LNDMRK	E 27
Flare Stack		NA		E 23, L 11
	At sea	6 pt Light U/L Black	NA	L 11
	On land	NA	LNDMRK	E 23
Floating Barrier		See Oil Barrier	NA	F 29
Flood Tide Stream - Rates		See Tidal Stream - Rates	NA	H 40
Floodlight/Floodlit		6 pt Light U/L Black	NA	P 63
Fog Signal				R
	At buoy	6 pt Medium U/L Italics Black	Master Object*	R
	At buoy (automatic)	6 pt Medium U/L Italics Black	Master Object*	R
	At light	6 pt Medium U/L Black	Master Object*	R
	At light vessel	6 pt Medium U/L Black	Master Object*	R
	At separate installation	6 pt Light U/L Black	Master Object*	R
	Independent	6 pt Light U/L Black	FOGSIG	R
Footbridge		See Bridge	BRIDGE	D a
Fortified Structure		NA	FORSTC	E 34
Foul		6 pt Light U/L Italics Black. 7 or 8 pt and/or spacing may be used for large scale charts.	NA	K 31
Fracture Zone		See Oceanographic Features	SEAARE	
Free Port Area		NA	NA	

G				
Text		Type	S-57 ENC Object Class	INT Ref
Gate		NA	NA	F 25,27, 41-44
Gas Field		See Oil Field	OSPARE	L 1
Gas Pipeline		See Pipeline - Gas	PIPSOL	L 40
Gas Works		See Refinery	PRDARE	
Glacier		See Ice Area	ICEARE	C 25
Graticule Latitudes, Longitudes		Refer Annex B and INT 2	NA	INT 2
Graving Dock (Dry)		See Dock - Graving (dry dock)	DRYDOC	F 25
Gridiron				F 24
	Description	6 pt Light U/L Italics Black	NA	F 24
	Named	NA	NA	
Groynes				F 6
	Description	6 pt Light U/L Black. 7 pt may be used for large scale charts	NA	
	Named	6 pt Light U/L Black. 7 pt may be used for large scale charts	SLCONS	
Gulf		See Bay	SEAARE	

H				
Text		Type	S-57 ENC Object Class	INT Ref
Harbour, Important (Major section or bold text in Sailing Directions). Refer Para 6(g)		7 pt Medium Capitals Italics Black. A larger point size and/or spacing may be used for large areas or on large scale charts.	HRBARE, ADMARE	
Harbour, Less Important (Listed in Sailing Directions). Refer Para 6(g)		7 pt Medium U/L Italics Black. A larger point size and/or spacing may be used for large areas or on large scale charts.	HRBARE, ADMARE	
Harbour, Unimportant (All other cases). Refer Para 6(g)		7 pt Light U/L Italics Black. A larger point size and/or spacing may be used depending on the area of the feature.	HRBARE, ADMARE	
Harbour Limit		7 pt Medium U/L Italics Magenta. 8 pt and/or spacing may be used for long limits	NA	N 49
Harbour Masters Office				F 60
	Description	NA	NA	
	Named	6 pt Light U/L Black	BUISGL	
Harbour Police		6 pt Light U/L Black	NA	U 31
Headland		See Point	LNDRGN	
Health Office			BUISGL	F 62.1
	Description	NA	NA	F 62.1
	Named	6 pt Light U/L Black	BUISGL	
Height above Chart Datum		See Intertidal Features	NA	
Height above High Water				
	Land, Islands	6 pt Medium Black	NA	K 10
	Land, known	See Elevations	NA	C 11
	Top of Structure	6 pt Medium Black	NA	E 4
	Tree top	6 pt Medium Black	NA	C 14
	Vertical Clearance	6 pt Medium Black.	NA	D 20,22-25,27,28
	Safe Vertical Clearance	6 pt Medium Magenta	NA	D 26
Height of Structure above Ground Level		6 pt Medium Black	NA	E 5
Helipad				
	Description	6 pt Light U/L Black	NA	
	Named	6 pt Light U/L Black	AIRARE	
Highway		See Road - Named	ROADWY	D 10
Hills		7 pt Medium U/L Black. The use of a larger point size, Capitals and/or spacing will depend on the area and importance of the feature. 6 pt may be used in congested areas.	LNDELV, LNDRGN	
Historic Wreck			WRECKS	N 26
	Description	7 pt Medium U/L Italics Magenta. 6 pt may be used in congested areas.	NA	N 26
	Named	NA	WRECKS	
Horizontal Clearance		See Clearance - Horizontal	NA	D 21

Hospital			BUISGL, C_AGGR	
	Description	6 pt Light U/L Black	NA	F 62.2
	Named	6 pt Light U/L Black	BUISGL, C_AGGR	
Hotel			BUISGL	
	Description	6 pt Light U/L Black	NA	E 1
	Named	6 pt Light U/L Black	BUISGL	
Hulk			HULKES	F 34
	Description	6 pt Light U/L Italics Black	NA	F 34
	Named	6 pt Light U/L Italics Black	HULKES	
Hut		See Building	BUISGL	
Hydrographic terms		See Oceanographic Features	SEAARE	O

I			
Text	Type	S-57 ENC Object Class	INT Ref
Ice Area		ICEARE	N 60
	Glacier (named)	7 pt Medium U/L Black	ICEARE C 25
	Ice Shelf (named)	8 pt Medium Capitals Black. Spacing may be used in large areas.	ICEARE N 60
Illuminated		See Floodlight/Floodlit	NA P 63
Incineration Area		7 pt Medium U/L Italics Magenta	NA N 65
Incompletely/ Inadequately Surveyed		9 pt Medium U/L Italics Magenta. The use of spacing will depend on area to be covered.	NA I 25
Inlet		See Bay	SEAARE
Inset - Title		See Title - Inset	NA A
Inshore Traffic Zone		See Traffic Zone, Inshore	NA M 25.1
International Boundary			N 40,41
	On land	7 pt Medium Capitals Black	LNDARE, ADMARE N 40
	In the sea	7 pt Medium Capitals Italics Magenta	ADMARE N 41
Intertidal Danger Comments		6 pt Light U/L Black	NA
Intertidal Features			
	Abbreviated	See Bottom Quality	NA J
	Description	6 pt Light U/L Italics Black. 7 or 8 pt and/or spacing may be used in large areas.	NA
Island Group (Name)		8 pt Medium U/L Black. The use of a larger point size, capitals and/or spacing will depend on size and coverage of Island group	LNDRGN, C_AGGR
Island/Islet Height		See Height above High Water - Land, Islands	NA K 10
Island/Islet, Important (Major section in Sailing Directions or covering large portion of chart). Refer Para 6(g)		7 pt Medium Capitals Black. The use of a larger point size and/or spacing will depend on the size of the Island.	LNDARE
Island/Islet, Less Important (Bold text in Sailing Directions). Refer Para 6(g)		7 pt Medium U/L Black. The use of a larger point size and/or spacing will depend on the size of the Island.	LNDARE
Island/Islet, Unimportant (All other cases). Refer Para 6(g)		7 pt light U/L Black. The use of a larger point size and/or spacing will depend on the size of the feature.	LNDARE

J				
Text		Type	S-57 ENC Object Class	INT Ref
Jetty			SLCONS	F 14,15
	Description	6 pt Light U/L Black	NA	F 14,15
	Named	6 pt Light U/L Black	SLCONS	
	Ruined	6 pt Light U/L Black	NA	F 33

L				
Text		Type	S-57 ENC Object Class	INT Ref
Lagoon		7 pt Light U/L Italics Black. A larger point size and/or spacing may be used on large scale charts. Medium text may be used for large lagoons.	SEAARE, LAKARE	
Lake, Important (Listed in Sailing Directions). Refer Para 6(g)		7 pt Medium U/L Italics Black. The use of a larger point size, Capitals and/or spacing will depend on the size of the Lake.	LAKARE, SEAARE	
Lake, Unimportant (All other cases). Refer Para 6(g)		7 pt Light U/L Italics Black	LAKARE	C 23
Landing for Boats			SMCFAC	F 17
	Description	6 pt Light U/L Italics Black	NA	F 17
	Named	6 pt Light U/L Italics Black	SMCFAC	
Landing Ground			AIRARE	D 17
	Description	6 pt Light U/L Black	NA	D 17
	Named	6 pt Light U/L Black	AIRARE	
Landing Stairs		6 pt Light U/L Black	NA	U 7
Landmark (Conspicuous)		See Conspicuous Features	LNDMRK	E 2
Landmark (Not conspicuous)			LNDMRK	E
	Description	6 pt Light U/L Black	NA	E 1,10,18, 20,24,30, 32,33
	Named	6 pt Light U/L Black	LNDMRK	
Lash		See Dolphin	NA	
Launching Facilities		See Ramp	NA	
Lava Flow		NA	NA	C 26
Leading Line			NA	M 1 P 20,21
	Marked by Beacons	6 pt Medium U/L Black	NA	M 1
	Marked by Lights	6 pt Medium U/L Black	NA	P 20-21
	Marked by Landmarks	6 pt Medium U/L Black	NA	
Ledge		See Reef - Named	SBDARE, SEAARE	
Lifeboat			NA	T 12,13
	Lying at mooring	NA	NA	T 13
	Station	NA	NA	T 12
Light Beacons		See Beacons - Light Description	Master Object*	P 4, Q 7
Light Buoy		See Buoys - Light Description	Master Object*	Q 7
Light Float			LITFLT	Q 30,31
	Light Description	6 pt Medium U/L Italics Black	NA	Q 30,31
	Named	6 pt Medium U/L Italics Black	LITFLT	
Light House			LNDMRK, BUISGL	P 1
	Description	6 pt Medium U/L Black	NA	P 1
	Named	6 pt Medium U/L Black	LNDMRK, BUISGL	
Light Sector Colours		6 pt Medium U/L Black	NA	P 11
Light Vessel			LITVES	P 6
	Description	6 pt Medium U/L Italics Black	NA	P 6
	Named	6 pt Medium U/L Italics Black	LITVES	

Light			LIGHTS	P
	Aero	6 pt Medium U/L Black	NA	P 60
	Air Obstruction (high intensity)	6 pt Medium U/L Black	NA	P 61.1
	Air Obstruction (low intensity)	6 pt Light U/L Black	NA	P 61.2
	Daytime	6 pt Light U/L Black (for "Day")	NA	P 51
	Description	6 pt Medium U/L Black	NA	P 10-14, 16,20.3, 22-23
	Direction	6 pt Medium U/L Black	NA	P 30
	Extinguished	6 pt Light U/L Black	NA	P 55
	Faint Sector	6 pt Medium U/L Black	NA	P 45
	Fog	6 pt Light U/L Black (for "Fog")	NA	P 52
	Fog Detector	6 pt Medium U/L Black	NA	P 62
	Horizontally Disposed	6 pt Light U/L Black (for "(hor)")	NA	P 15
	In Line (not leading)	See Leading Line	NA	M 1 P 20,21
	Intensified	6 pt Medium U/L Black	NA	P 46
	Landing	NA	NA	
	Leading	See Leading Line	NA	M 1 P 20,21
	Moire Effect	6 pt Medium U/L Black	NA	P 31
	Morse Code	6 pt Medium U/L Black	NA	P 10.9
	Named	6 pt Medium U/L Black	Master Object*	P 16,20.1
	Obscured	6 pt Medium U/L Black	NA	P 43
	Occasional	6 pt Light U/L Black (for "(occas)")	NA	P 50
	Private	6 pt Light U/L Black (for "(priv)")	NA	P 65
	Strip	NA	NA	P 64
	Subsidiary	6 pt Medium U/L Black	NA	P 42
	Supplementary (description)	6 pt Light U/L Black	NA	
	Temporary	6 pt Light U/L Black (for "(temp)")	NA	P 54
	Unwatched	6 pt Light U/L Black (for "(U)")	NA	P 53
	Vertically Disposed	6 pt Light U/L Black (for "(vert)")	NA	P 15
Local Magnetic Anomaly				B 82
	Reference to Note	7 pt Medium U/L Black	NA	B 82.2
	Deviation	12 pt Medium Numeral Black. Used only where magnitude and extent are known.	NA	B 82.1
Locality Names		See Town	BUAARE, LNDRGN	
Lock Basin			LOCBSN	
	Description	6 pt Light U/L Italics Black	NA	F 41.1
	Named	NA	LOCBSN	
Log Pond			LOGPON	N 61
	Description	6 pt Light U/L Italics Black	NA	N 61
	Named	NA	LOGPON	
Lookout			LNDRGN, LNDMRK	
	Description	6 pt Light U/L Black	NA	
	Named	NA	LNDRGN, LNDMRK	

M				
Text		Type	S-57 ENC Object Class	INT Ref
Magnetic Anomaly		See Local Magnetic Anomaly - Deviation	NA	B 82
Magnetic Variation			NA	
	In Title (plans)	8 pt Medium U/L Black. Heading "Mag Var" to be 8 pt Bold U/L Black.	NA	A
	Within Rose	7 pt Medium U/L Magenta	NA	B 70
	On Isogonals	8 pt Medium Capitals Magenta	NA	B 71
Maintained Depth		See Dredged Area - Maintained	DRGARE	I 23
Mangroves, Legend		See Trees, Legend	NA	C 30
Marina (Named)		7 pt Light U/L Black	HRBFAC	U 1.1
Marine Farms			MARCUL	K 47,48
	Description	6 pt Light U/L Italics. Colour will depend on colour of boundary. 7 pt and/or spacing may be used in large areas.	NA	K 47,48
	Named	NA	MARCUL	
Marine Park		See ESSA , MR and PSSA	RESARE	N 22
Marine Reserve (MR)	Reference to Note	7 pt Medium Italics Green - "MR (see GBRMP Note)"	RESARE	N 22
Maritime Area			Various	N
	General (implying no physical obstructions)	7 pt Medium U/L Italics Magenta. The use of a larger point size and/or spacing will depend on size of area.	Various	N 1.2
	General (implying physical obstructions)	7 pt Medium U/L Italics Black. The use of a larger point size and/or spacing will depend on size of area.	Various	N 1.1
	Minor	6 pt Light U/L Italics (colour will depend on the colour of the boundary)	Various	
Mark Coloured or White			DAYMAR, BCNSPP	Q 101
	Description	6 pt Medium U/L Black	NA	Q 101
	Named	NA	DAYMAR, BCNSPP	
Marker Ship			BOYSPP	Q 52
	Description	6 pt Light U/L Italics Black	NA	Q 52
	Named	6 pt Light U/L Italics Black	BOYSPP	
Marsh			COALNE, LNDRGN	C 33
	Description	6 pt Light U/L Black. 7 pt and/or spacing may be used for large areas or on large scale charts.	NA	C 33
	Named	6 pt Light U/L Black. 7 pt and/or spacing may be used for large areas or on large scale charts.	COALNE, LNDRGN	
Mast, Wreck		See Wreck - Mast	NA	K 25
Mast, Radio/Radar/TV			LNDMRK	E 28,30.1
	Description	6 pt Light U/L Black. Used for annotation of position circle or indication of multiple objects only.	NA	E 30.1
	Named	6 pt Light U/L Black	LNDMRK	
Measured Distance		6 pt Light U/L Black	NA	Q 122
Middle Ground		7 pt Medium U/L Italics	NA	

Military Base/Area (on land)		7 pt Light U/L Black. 8 pt may be used on large scale charts. 6 pt may be used in congested areas.	RESARE	
Military Exercise Area (In water)			MIPARE	N 30,32,33
	Description	8 pt Medium U/L Magenta. 7 pt may be used on small scale charts and congested areas.	NA	N 30,32,33
	Named	NA	MIPARE	
Military Waters		8 pt Medium U/L Italics Magenta	RESARE	N 31
Mine (Named)		NA	PRDARE	E 36
Minefield			RESARE	N 34
	Description	7 pt Medium U/L Italics Magenta	NA	N 34
	Named	NA	RESARE	
Mole (Named)		6 pt Light U/L Black. 7 pt may be used for large scale charts.	SLCONS	F 12
Monument		NA	LNDMRK	E 24
Mooring Berths		6 pt Medium Magenta	BERTHS	Q 42
Mooring Buoy, Light		See Buoys - Mooring - light	MORFAC	Q 41
Moorings, Small Craft		6 pt Medium U/L Italics Black	ACHARE	Q 44
Mooring, Trot Number		See Trot Mooring Number	BERTHS	Q 42
Mountains		See Hills	LNDELV, LNDRGN	
Mountain Ranges		6 pt Medium Capitals Black. A larger point size and/or spacing may be used depending on extent of range.	LNDRGN	

N				
Text		Type	S-57 ENC Object Class	INT Ref
Narrows		See Channel	SEAARE	
National Territory		NA	ADMARE	
National Park, Nature Reserve (Bird, Game, Seal, Fish, Ecological), on Land		7 pt Medium U/L Black. A larger point size and/or spacing may be used in large areas. For water areas see Marine Park.	LNDRGN, RESARE	
Nature of Seabed		See Bottom Quality	NA	J
Naval Base		7 pt Light U/L Black. 8 pt may be used on large scale charts. 6 pt may be used in congested areas.	HRBFAC	
Naval Exercise Area				
	No boundaries	8 pt Medium U/L Italics Black	MIPARE	
	Within boundaries	7 pt Medium U/L Italics Magenta. A larger point size, Capitals and/or spacing may be used in large areas.	MIPARE	N 30-34
Naval Waters		See Military Waters	RESARE	N 31
New Edition Text and Date		Refer Annex B	NA	A 6
Notes, Cautionary		Refer Annex D . These Notes must be block justified to 50mm.	NA	A 16
Note			NA	
	Heading and reference on face of chart	8 pt Medium U/L. Capitals and/or spacing may be used depending on importance of area of interest. For water features use Italics; shown in Black if subject matter is of a permanent physical nature and an obstruction to surface navigation, or shown in Magenta if subject matter is of non-permanent or intangible nature. For (see Note) regarding Leading Lines, use 6 pt Light U/L Black. For (see Note) regarding Recommended Tracks and Preferred Routes use 7 pt Medium U/L Italics Black. For reference in relation to currents, see Current - Reference to Note. For references relating to Marine Protected Areas and Designated Shipping Areas, see ESSA , PSSA , MR and DSA .	NA	
	Related Publications	Refer Annex C	NA	A 20
Notices to Mariners			NA	
	Block, Border text	Refer Annex G	NA	
	Legend and Numbers	Refer Annex B	NA	A 7
Number, Chart		Refer Annex B	NA	A 1

O				
Text		Type	S-57 ENC Object Class	INT Ref
Observation Spot		6 pt Light U/L Black	NA	B 21
Observatory		See Building	BUISGL	
Obstruction			OBSTRN	K 40-43 L 20-23,43
	Description	6 pt Medium U/L Italics Black. Obstructions that are always dry (wells) are to be in upright text.	NA	K 40-43 L 20-23,43
	Named	6 pt Medium U/L Italics Black. Obstructions that are always dry (wells) are to be in upright text.	OBSTRN	
Occasional Light		See Light - Occasional	Master Object *	P 50
Ocean			SEAARE	
	Names	24 pt Medium Capitals Italics Black. The use of various point sizes and/or spacing will depend on size of area.	SEAARE	
	Current Rates	See Current - Rates	NA	H 43
Oceanographic Features		Medium Italics Black. The use of Capitals, spacing and point size (minimum 7 pt) will depend on size of feature and its importance.	SEAARE	
ODAS Buoys		See Buoys , ODAS	Master Object *	Q 58
Offshore Production Area		NA	OSPARE	
Offshore Rig, Production Platform (Named)		6 pt Medium U/L Black	OFSPLF	L 2,10-17
Offshore Safety Zone		NA	NA	L 3
Oil Barrier			NA	F 29
	Description	6 pt Medium U/L Italics. Black for floating oil barrier and Magenta for oil retention barrier (high pressure pipe).	NA	F 29
	Named	NA	NA	
Oil Field		7 pt Light U/L Italics Black. The use of spacing will depend on size of area.	OSPARE	L 1
Oil Pipeline		See Pipeline - Oil	NA	L 40
Outfall		6 pt Light U/L Italics Black	NA	L 41
Overhead Pipe			NA	D 28
	Description	6 pt Light U/L Black	NA	D 28
	Named	NA	NA	
Oyster Beds			MARCUL	
	Description	6 pt Light U/L Italics Black	NA	K 48
	Named	NA	MARCUL	

P				
Text		Type	S-57 ENC Object Class	INT Ref
Particularly Sensitive Sea Area (PSSA)	Reference to Note (along boundary)	7 pt Medium Italics Green – e.g. "PSSA (see GBRMP Note)"	RESARE	N 22
Passage		See Channel	SEAARE	
Patches		See Reef - Named	SEAARE	
Peak		See Hills	LNDELV, LNRDGN	
Pearl Culture		See Shellfish Beds	MARCUL	K 47
Peninsula		See Point	LNRDGN	
Pier		See Jetty	SLCONS	F 14
Piles/Piling			PILPNT, (MORFAC)	F 22
	Description	6 pt Light U/L Black	NA	F 22
	Named	NA	PILPNT, (MORFAC)	
Pilot				
	Boarding Place name or Note	6 pt Medium U/L Italics Magenta	PILBOP	T 1
	Office Lookout	6 pt Light U/L Black	NA	T 2
	Office (pilots)	6 pt Light U/L Black	NA	T 3
	Station	6 pt Medium U/L Black	NA	
Pilotage Area		7 pt Medium U/L Italics Magenta	ADMARE	N 49
Pilotage service at Port (pilots)		6 pt Medium U/L Magenta	NA	T 4
Pipeline (On land)		NA	NA	D 29
Pipeline (In water)				L 40-44
	Areas	6 pt Light U/L Italics. The use of 7 or 8 pt and/or spacing will depend on size of area. Magenta is to be used for supply pipelines.	NA	L 40.2,41.2
	Area, named	NA	PIPARE	
	Buried	6 pt Medium U/L Italics. Magenta is to be used for supply pipelines.	NA	L 42
	Disused	NA	NA	L 44
	Gas	6 pt Medium U/L Italics Magenta. The use of 7 or 8 pt and/or spacing will depend on length of pipeline.	NA	L 40.1
	Intake, Outfall, Sewer, Water	6 pt Light U/L Italics	NA	L 40.1,41.1
	Named	NA	PIPSOL	
	Oil	6 pt Medium U/L Italics Magenta. The use of 7 or 8 pt and/or spacing will depend on length of pipeline.	NA	L 40.1
Pipeline (Overhead)		See Overhead Pipe	NA	D 28
Plan				
	Reference to	9 pt Medium U/L Magenta. Capitals may be used for large plan limits or if space permits.	NA	A 18
	Title	See Title - Plan	NA	
Plateau				
	On Land	See Mountain Ranges	LNRDGN	
	Oceanographic	See Oceanographic Features	SEAARE	

Point, Important (Major section of Sailing Directions). Refer Para 6(g)		9 pt Medium U/L Black. Capitals should only be used in exceptional circumstances. Larger point sizes and/or spacing may be used for large areas.	LNDRGN	
Point, Less Important (Bold text in Sailing Directions). Refer Para 6(g)		8 pt Medium U/L Black	LNDRGN	
Point, Unimportant (All other cases). Refer Para 6(g)		7 pt Light U/L Black	LNDRGN	
Pontoon			PONTON	F 16
	Description	6 pt Light U/L Italics Black	NA	F 16
	Named	NA	PONTON	
Port Authority/Control				
	Description	6 pt Light U/L Black	NA	
	Named	6 pt Light U/L Black	BUISGL	
Port Limit		7 pt Medium U/L Italics Magenta. The use of 8 pt, Capitals and/or spacing will depend on area covered.	HRBARE	N 49
Position				
	Approximate	6 pt Light Italics Black	NA	B 7
	Doubtful	6 pt Light Italics Black	NA	B 8
Post		See Piles/Piling . For submerged posts see Obstruction .	NA	F 22 K 43
Post Office		NA	NA	F 63
Power Cable				
	Overhead	See Cables - Overhead	NA	D 26,27
	Submarine	See Cables - Legend, submarine	CBLSUB	L 30-32
Power Station				
	Description	6 pt Light U/L Black	NA	
	Named	6 pt Light U/L Black	BUISGL, PRDARE	
Power, Transmission line		See Cables - Overhead	NA	D 26
Precautionary Area		6 pt Medium U/L Italics Magenta	NA	M 16,24
Preferred Route				
	Description	7 pt Medium U/L Italics Black	NA	
	Bearings	6 pt Medium Black	NA	M 4
Print Text and Date		Refer Annex B	NA	
Production Platform		See Offshore Rig, Production Platform	OFSPLF	L 2
Prohibited Anchorage		NA	RESARE	N 20
Prohibited Area		7 pt Medium U/L Italics Magenta. A larger point size, Capitals and/or spacing may be used in large areas.	NA	N 2,2,31
Promontory		See Point	LNDRGN	
Publication Details		Refer Annex B	NA	A 4
Pylons				
	Description	6 pt Light U/L Black. 7 pt may be used on large scale charts.	NA	D 26
	Named	NA	PYLONS	

Q				
Text		Type	S-57 ENC Object Class	INT Ref
Quarry				E 35
	Description	6 pt Light U/L Black. Only to be used where no symbol is shown.	NA	
	Named	NA	PRDARE	
Quarantine				
	Anchorage	NA	NA	N 12.8
	Limit	7 pt Light U/L Italics Magenta	NA	
Quay			SLCONS	F 13
	Description	7 pt Light U/L Black	NA	
	Named	7 pt Light U/L Black	SLCONS	

R				
Text		Type	S-57 ENC Object Class	INT Ref
Radar Beacon				S 2,3
	Continuous (Ramark)	6 pt Medium U/L Magenta	NA	S 2
	Transponder (Racon)	6 pt Medium U/L Magenta. Italics must be used when associated with a floating master object.	NA	S 3
	Named	NA	Master Object*	
Radar				
	Dome	6 pt Light U/L Black	LNDMRK	E 30.4
	Range	6 pt Medium U/L Magenta	NA	M 31
	Reference Line	"Ra" - 6 pt Medium U/L Magenta	NA	M 32
	Scanner	6 pt Light U/L Black	NA	E 30.3
Radar Station, Coast		6 pt Medium U/L Magenta	RADSTA	S 1
Radar Station, Surveillance		6 pt Medium U/L Black	NA	M 30
Radar Transponder, Beacon Bearing		6 pt Medium U/L Magenta	NA	S 3.5
Radiobeacon				S 10-16
	Aeronautical (Aero RC)	"Aero RC" - No longer depicted on Australian nautical charts	NA	S 16
	Directional (RD)	No longer depicted on Australian nautical charts	NA	S 11
	Direction bearing	No longer depicted on Australian nautical charts	NA	S 11
	Circular (non-directional marine or aeromarine)	No longer depicted on Australian nautical charts	NA	S 10
	Rotating Pattern	No longer depicted on Australian nautical charts	NA	S 12
	Named	No longer depicted on Australian nautical charts	NA	S 10
Radio Calling-in Point, Designation		7 pt Medium Capitals Magenta	RDOCAL	M 40
Radio Mast		6 pt Light U/L Black. Used for annotation of position circle or indication of multiple objects only.	LNDMRK	E 1
Radio/Radar Buoy		See Buoys - Radar	Master Object*	S 3.6
Radio Station				S 14,15
	Coast providing QTG service (R)	No longer depicted on Australian nautical charts	NA	S 15
	Direction finding (RG) (emergency stations only)	6 pt Medium Capitals Magenta	RDOSTA	S 14
Radio Tower		6 pt Light U/L Black. Used for annotation of position circle or indication of multiple Objects only.	LNDMRK	E 1
Railway			RAILWY	D 13
	Station (name)	6 pt Light U/L Black	BUISGL	
	Named	6 pt Light Capitals Black. The use of spacing will depend on the length of the railway.	RAILWY	
Ramp			SLCONS	F 23
	Description	6 pt Light U/L Black	NA	F 23

Ramp	Named	6 pt Light U/L Black	SLCONS	
Rapids		NA	NA	C 22
Reclamation, Under		See Under - Reclamation	NA	F 31
Recommended Route - Named		NA	RCRTCL, C_AGGR	M 28.1
Recommended Track			RECTRC	
	Bearings	See Bearings on Recommended Track	NA	M 1,3,4
	Draught	6 pt Medium U/L Italics Black	NA	M 6
Reef - Named		7 pt Medium U/L Italics Black. The use of a larger point size, Capitals and/or spacing will depend on area of feature.	SBDARE, SEAARE, OBSTRN, SOUNDG, C_AGGR	
Reference				
	Adjoining Chart	See Chart Reference	NA	A 19
	Cautionary Notes	See Chart Reference	NA	A 16
	Larger Scale Charts (with limits)	See Chart Reference	NA	A 18
	Larger Scale Charts (without limits)	See Chart Reference	NA	A 19
	Plan on another chart	See Chart Reference	NA	A 18
	Plan on the same chart	See Chart Reference	NA	A 18
Refinery			PRDARE, C_AGGR	
	Description	6 pt Light U/L Black. 7 pt may be used on large scale charts.	NA	
	Named	6 pt Light U/L Black. 7 pt may be used on large scale charts.	PRDARE, C_AGGR	
Refuge for Shipwrecked Sailors			RSCSTA	T 14
	Description	6 pt Light U/L Black	NA	T 14
	Named	NA	RSCSTA	
Related Publications Boxed Note		Refer Annex C	NA	A 20
Reported Object		6 pt Light U/L Italics Black. Reported features which are always dry must be in upright text.	NA	I 3-4
Rescue Station		NA	RSCSTA	T 12
Reservoir		See Dam	LAKARE	
Restricted Area		See relevant nature of restriction	RESARE	N 2,20-34,63
Ridge		See Mountain Ranges	LNDRGN	
River, Important (Navigable at chart scale and listed in Sailing Directions). Refer Para 6(g)		7 pt Medium U/L Italics Black. The use of a larger point size, Capitals and/or spacing will depend on length and breadth of river.	SEAARE	C 20
River, Less Important (Non-navigable at chart scale and listed in Sailing Directions). Refer Para 6(g)		7 pt Medium U/L Italics Black. The use of 8-10 point, Capitals and/or spacing will depend on length and breadth of river.	RIVERS	C 20
River, Unimportant (Non-navigable at chart scale and not listed in Sailing Directions). Refer Para 6(g)		7 pt Light U/L Italics Black. The use of spacing will depend on length of river.	RIVERS	C 20

Road - Named		6 pt Light Capitals Black. The use of spacing will depend on the length of the road.	ROADWY	D 10-12
Rock - Named (always dry)		See Island/Islet , less important and Island/Islet, unimportant	LNDARE	K 10
Rock - Named (intertidal or submerged)		7 pt Medium U/L Italics Black	UWTROC	K 11-15
Ro Ro (Roll on Roll off Ferry Terminal)			HRBFAC	F 50
	Description	6 pt Light U/L Black	NA	F 50
	Named	NA	HRBFAC	
Ruins		6 pt Light U/L Black. 7 pt and/or spacing may be used for large scale charts (areas only).	NA	D 8
Runway		NA	RUNWAY	

S				
Text		Type	S-57 ENC Object Class	INT Ref
"Salt pans"		6 pt Light U/L Black. 7 pt and or spacing may be used for large areas or large scale charts.	NA	C 24
"Sand and Mud"		6 pt Light U/L Italics Black	NA	
Sand Dunes		See Dunes, Sand	LNDRGN, SLOGRD	C 8
Sand Patch (Not conspicuous)				
	Description	6 pt Light U/L Black	NA	
	Named	6 pt Light U/L Black	LNDRGN, SLOGRD	
Sand Waves		7 pt Medium U/L Italics Black	NA	J 14
Sandy Shore				C 6
	Description	6 pt Light U/L Black. 7 pt and/or spacing may be used for large areas or large scale charts.	NA	
	Named	6 pt Light U/L Black. 7 pt and/or spacing may be used for large areas or large scale charts.	COALNE, DEPARE	
Scale, Chart		Refer Annex D	NA	A 13
Scale Bar		6 pt Light Capitals Black	NA	A 14-15
Seas		See Ocean	SEAARE	
Seabed Quality		See Bottom Quality	NA	J
Seamount		See Oceanographic Features	SEAARE	
Seaplane Landing Area				N 13
	Anchorage	NA	NA	N 14
	Description	8 pt Medium U/L Italics Magenta. 7 pt may be used in congested areas.	NA	
	Named	NA	SPLARE	
Seawall		NA	NA	F 2
Sectors (Light)				
	Faint	See Light - Faint	NA	P 45
	Intensified	See Light - Intensified	NA	P 46
	Light	See Light Sector Colours	NA	P 40
	Obscured	See Light - Obscured	NA	P 43
"see Note"		See Note - Heading and reference on face of chart	NA	
Sewer		See Pipeline	NA	L 41
Shellfish Beds			MARCUL	K 47
	Description	6 pt Light U/L Italics Black. 7 pt Medium Italics Magenta is to be used for Pearl Cultures.	NA	K 47
	Named	NA	MARCUL	
Shingly Shore			COALNE	C 7
	Description	6 pt Light U/L Black. 7 pt and/or spacing may be used for large areas or large scale charts.	NA	C 7
	Named	6 pt Light U/L Black. 7 pt and/or spacing may be used for large areas or large scale charts.	COALNE	
Shipyards			HRBFAC	
	Description	6 pt Light U/L Black. 7 pt and/or spacing may be used for large areas or large scale charts.	NA	

Shipyards	Named	6 pt Light U/L Black. 7 pt and/or spacing may be used for large areas or large scale charts.	HRBFAC	
Shoals		See Reef - Named	SEAARE, SOUNDG	
Signal Station, Various			SISTAT, SISTAW	T 20-36
	Description	6 pt Medium Black	NA	T 20-36
	Named	NA	SISTAT, SISTAW	
Silo (Not conspicuous)			SILTNK	E 33
	Description	6 pt Light U/L Black. Used for annotation of position circle or indication of multiple objects only.	NA	E 33
	Named	NA	SILTNK	
Slipway			SLCONS	F 23
	Description	6 pt Light U/L Black. 7 pt may be used for large scale charts. Use Italics for intertidal or submerged slipways.	NA	F 23
	Named	6 pt Light U/L Black. 7 pt may be used for large scale charts. Use Italics for intertidal or submerged slipways.	SLCONS	
Small Craft			SMCFAC or related Object (where possible)	
	Anchorage	7 pt Medium U/L Italics Magenta. Spacing may be used for large areas.	NA	N 12.1
	Facility	6 pt Light U/L Black	SMCFAC or related Object (where possible)	U
	Moorings	See Moorings, Small Craft	NA	Q 44
Sounding	<i>See Australian Paper Chart Specifications clause B-412.1.</i>		NA	I 10-15
	Named	7 pt Medium U/L Italics Black	SOUNDG	
Sounding Doubtful (SD)		6 pt Light Capitals Italics Black	NA	I 2
Spit				
	On Land	See Point	LNDRGN	
	Intertidal	See Oceanographic Features	SEAARE	
Spoil Ground		6 pt Light U/L Italics Black. The use of a larger point size and/or spacing will depend on size of area.	NA	N 62
Spot Height		See Height above High Water	LNDELV	C 11
Spring		NA	NA	J 15
Steep Coast		See Cliff	COALNE, SLOTOP	C 3
Steps		See Landing Stairs	NA	U 7
Stockpile (not conspicuous)			PRDARE	
	Description	6 pt Light U/L Black	NA	
	Named	NA	PRDARE	
Stony Shore			COALNE	C 7
	Description	6 pt Light U/L Black. 7 pt and/or spacing may be used for large areas or large scale charts.	NA	C 7
	Named	6 pt Light U/L Black. 7 pt and/or spacing may be used for large areas or large scale charts.	COALNE	
Strait		See Channel	SEAARE	
Stream		See River	RIVERS, SEAARE	
Street - Named		See Road - Named	ROADWY	D 10-12

Submarine Exercise Area		7 pt Light Capitals Italics Magenta. The use of a larger point size and/or spacing will depend on size of area.	MIPARE	N 33
Submarine Transit Lane		NA	NA	N 33
Swept Area Date		8 pt Medium Italics Magenta	NA	I 24
Swept Depth		8 pt medium Magenta	NA	I 24

T				
Text		Type	S-57 ENC Object Class	INT Ref
Tank (Not conspicuous)			SILTNK	E 32
	Description	6 pt Light U/L Black. Used for annotation of position circle or indication of multiple objects only.	NA	E 1,32
	Named	NA	SILTNK	
Tank Farm		NA	PRDARE	E 32
Telegraph, Telephone		See Cables - Overhead	NA	D 27
Terminal - Bulk, Container, Passenger, Tanker			HRBFAC	
	Description	6 pt Light U/L Black. 7 pt may be used for large areas or on large scale charts.	NA	
	Named	6 pt Light U/L Black. 7 pt may be used for large areas or on large scale charts.	HRBFAC	
Territorial Sea				
	Baselines	7 pt Medium U/L Italics Magenta	NA	N 42
	Seaward Limit	NA	NA	N 43
Tidal Flats		6 pt Light U/L Black. 7 pt and or spacing may be used for large areas or large scale charts.	SEAARE	
Tidal Panel		Refer Annex E	NA	H 30
Tidal Stream			NA	
	Panel	Refer Annex E	NA	H 31
	Rates (ebb and flood)	6 pt Light U/L Italics Black. No space between rate and "kn".	NA	H 40,41
	Reference (in diamond)	6 pt Medium Capitals Magenta	TS_PAD	H 46
Tide Gauge			SISTAW	T 32
	Description	6 pt Light U/L Black	NA	T 32
	Named	NA	SISTAW	
Tideway		NA	TIDEWY	C j
Timber Yard		NA	NA	F 52
Title				
	Chart	Refer Annex D	NA	A 10
	Inset	Medium Black. Point size dependant on size of inset and space available (minimum 10 pt). Note that elements of the Title must be consistent, as indicated in Annex D .	NA	
	Notes on chart construction	Refer Annex D	NA	A 11
	Plan	Medium Black. Point size dependant on size of inset and space available (minimum 10 pt). Note that elements of the Title must be consistent, as indicated in Annex D .	NA	A

Tower (Not conspicuous)			LNDMRK, SILTNK	E 1,20,21, 30.2
	Description	6 pt Light U/L Black. Used for annotation of position circle or indication of multiple objects only.	NA	E 20,21, 30.2
	Named	6 pt Light U/L Black	LNDMRK, SILTNK	
	Water	NA	NA	E 21
Town, Important (Containing port/harbour facilities at chart scale). Refer Para 6(g)		7 pt Medium Capitals Black. The use of a larger point size and/or spacing will depend on the size of the town.	BUAARE, ADMARE	D 1,2
Town, Less Important (containing port/harbour facilities not shown at chart scale). Refer Para 6(g)		7 pt Medium U/L Black. The use of a larger point size and/or spacing will depend on the size of the town.	BUAARE, ADMARE	D 2,3
Town, Unimportant (All other cases). Refer Para 6(g)		7 pt Light U/L Black	BUAARE	D 3-4
Track, Recommended		See Recommended Track	NA	M 3,4
Traffic Zone, Inshore		8 pt Medium U/L Italics Magenta	NA	M 25.1-25.2
Training Wall			SLCONS	F 5
	Description	6 pt Light U/L Black. 7pt and/or spacing may be used for long walls or large scale charts. Italics must be used for intertidal/submerged training walls.	NA	F 5
	Named	NA	SLCONS	
Transit Bearing		6 pt Medium Black (whole degrees)	NA	M 2
Transmission Line		NA	NA	D 26
Transporter, Overhead		See Conveyor	CONVYR	D 25
Trees, Legend		6 pt Light U/L Black. 7 pt and/or spacing may be used for large areas or on large scale charts.	NA	C 30
Triangulation Point		NA	CTRPNT	B 20
Trot Mooring Number		6 pt Medium Magenta	BERTHS	Q 42
Tug Harbour		See Channel	NA	
Tunnel (Under water)		6 pt Medium U/L Black. The use of 7 pt and/or Capitals will depend on extent of tunnel.	TUNNEL	D 16
Tunny Nets		6 pt Light U/L Italics Black	NA	K 45
TV Mast or Tower (Not conspicuous)			LNDMRK	E 1,28,29
	Description	6 pt Light U/L Black. Used for annotation of position circle or indication of multiple objects only.	NA	E 1
	Named	NA	LNDMRK	
Two-Way Route		12 pt Medium Capitals Italics Magenta. Smaller point sizes may be used in small areas or on smaller scale charts and Plans. For (see Note) refer to Note above.	C_AGGR	M 27,28

U				
Text		Type	S-57 ENC Object Class	INT Ref
Under				
	Construction	6 pt Light U/L Black	NA	F 30,32
	Reclamation	6 pt Light U/L Black	NA	F 31
Unexamined		6 pt Light U/L Italics Black	NA	
UNSURVEYED		9 pt Medium Capitals Italics Magenta. The use of spacing will depend on area to be covered. Smaller point sizes may be used in congested areas.	NA	I 25

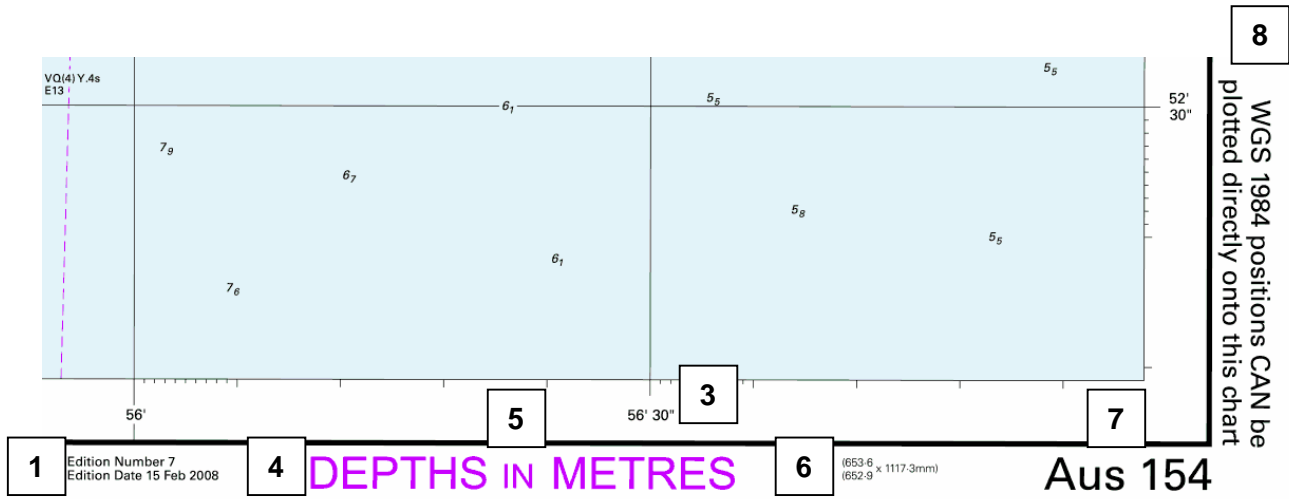
V				
Text		Type	S-57 ENC Object Class	INT Ref
Variation, Magnetic		See Magnetic Variation	NA	B 82
Vertical Clearance		See Height above High Water	NA	D 20
Vegetation, Description		6 pt Light U/L Black. 7 pt and/or spacing may be used for large areas.	NA	C 30
Viewpoint Reference		6 pt Light U/L Black	NA	
Village, Important		See Town, Less Important	BUAARE	D 3,4
Village, Less Important		See Town, Unimportant	BUAARE	D 4

W				
Text		Type	S-57 ENC Object Class	INT Ref
Wall		NA	NA	
Warehouse (designation)		See Building	BUISGL, PRDARE	F 51
Watch Tower		See Lookout	LNDMRK	
Waterfall		NA	NA	C 22
Water Tower		See Tower - Water	SILTNK	E 21
Water Turbulence (Breakers, Eddies, Overfalls, Tide Rips, Bombora)		6 pt Light U/L Italics Black. To be used only for additional description (e.g. Strong Tide Rips)	OBJNAM to be populated for the related object (e.g. UWTROC)	H 44,45 K 17
Wave Recorder		6 pt Light U/L Italics Black	NA	Q 59
Waverider (buoy)		See Buoys - Waverider	NA	
Weed/Kelp		6 pt Light U/L Italics Black	NA	J 13
Well			NA	L 20-23
	Submerged / suspended	6 pt Medium U/L Italics Black	NA	L 20,21
	Always dry	6 pt Medium U/L Black	NA	L 23
Wharf			SLCONS	F 13
	Description	NA	NA	F 13
	Named	7 pt Light U/L Black. Spacing may be used for large wharves.	SLCONS	
Wind Farm (On land)			PRDARE	
	Description	6 pt Light U/L Black	NA	E 26.2
	Named	NA	PRDARE	
Wind Farm (In Water)			PRDARE	
	Description	6 pt Medium Italics Black. 7 pt and/or spacing may be used for large areas.	NA	
	Named	NA	PRDARE	
Windmill				
	Named	NA	LNDMRK	
	Wingless	6 pt Light U/L Black	NA	E 25.2
Windmotor		NA	LNDMRK	
Wooded		6 pt Light U/L Black. 7 pt and/or spacing may be used for large areas.	NA	C 30
Works In Progress		See Under - Construction	NA	F 30,31
Wreck			WRECKS	
	Description	7 pt Medium U/L Italics Black	NA	K 20-30
	Historic	7 pt Medium U/L Italics Magenta. 6 pt may be used in area symbols.	NA	N 26
	Mast	6 pt Light U/L Italics Black	NA	K 25
	Named	NA	WRECKS	

Y			
Text	Type	S-57 ENC Object Class	INT Ref
Yacht/Sailing Club - Named	6 pt Light U/L Black	BUISGL	
Yacht Harbour	See Marina (Named)	HRBFAC	U 1.1

Z				
Text		Type	S-57 ENC Object Class	INT Ref
Zone of Confidence (ZOC) Diagram		Refer Annex E	NA	A 17

ANNEX B – BORDER AND MARGINAL DETAILS



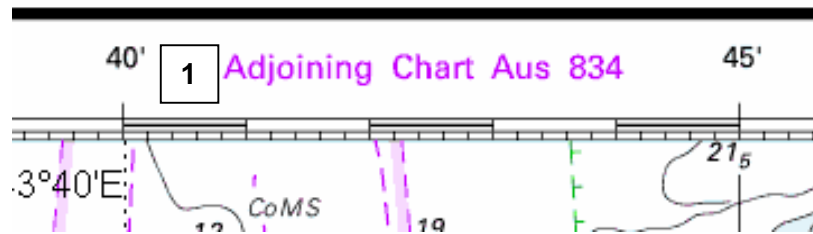
- 1 = 7 pt Medium U/L Black
- 2 = 10 pt Medium Black
- 3 = 8 pt Medium Black
- 4 = 24 pt Medium Capitals Magenta } Also for DEPTHS IN FATHOMS
- 5 = 18 pt Medium Capitals Magenta }
- 6 = 6 pt Light U/L Black
- 7 = 24 pt Medium U/L Black
- 8 = 14 pt Medium U/L Black (Magenta if chart is on horizontal datum other than WGS84)



Published by the Australian Hydrographic Service, 3 August 2007, under the direction of Captain R. Nairn, R.A.N, Hydrographer of Australia.
 8 Station Street, Wollongong, N.S.W. 2500, Telephone (02) 4221 8500, Fax (02) 4221 8599.
www.hydro.gov.au

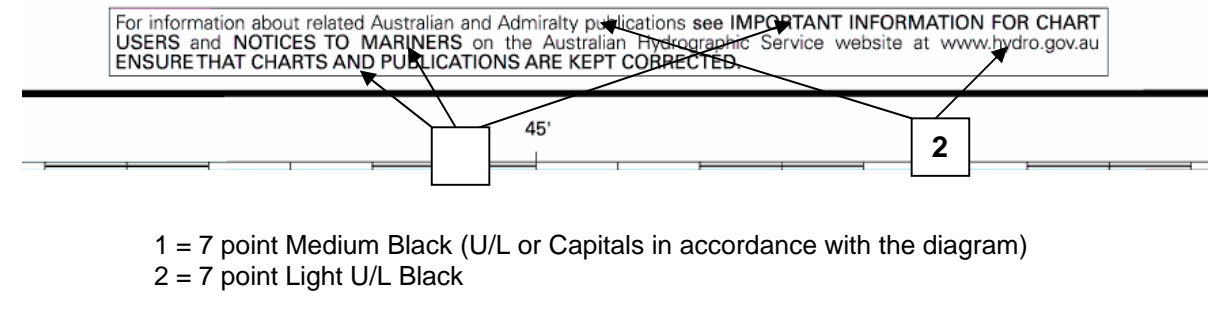
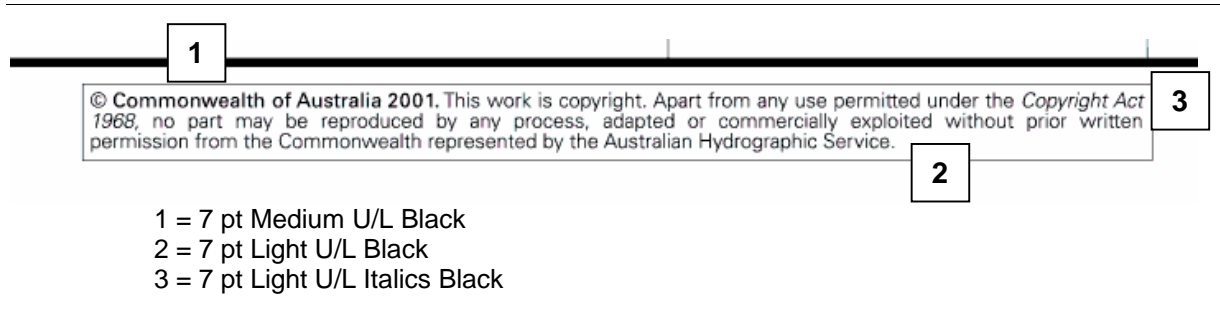
- 1
- 2
- 3

- 1 = 8 pt medium U/L Black
- 2 = 8 pt Light U/L Black
- 3 = 8 pt Light L Black

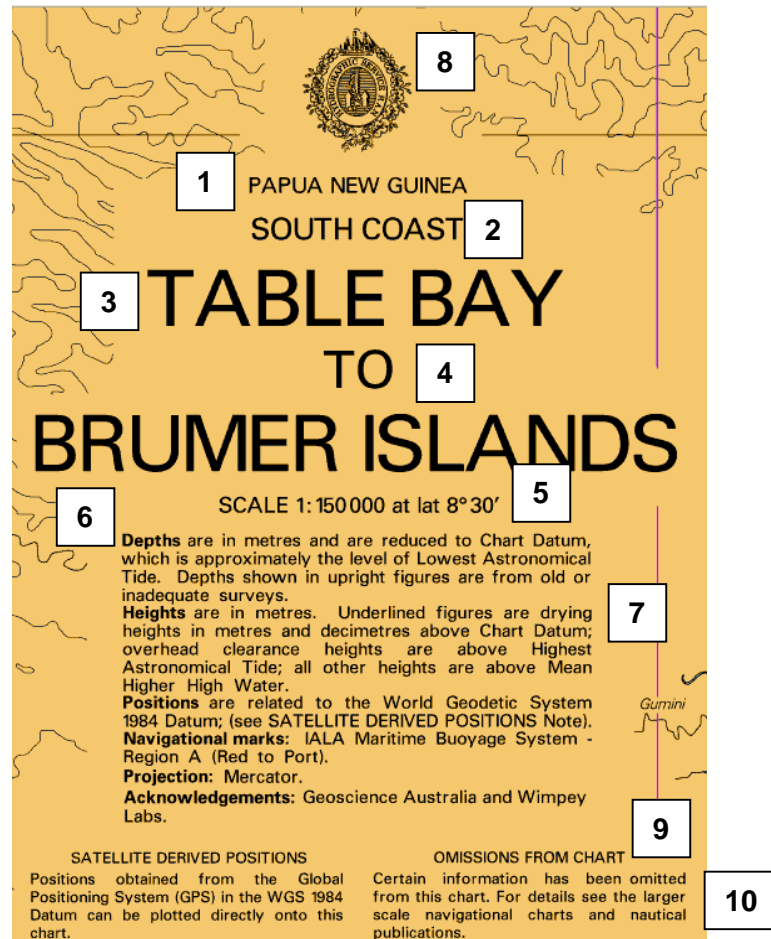


- 1 = 9 pt Medium U/L Magenta

ANNEX C - COPYRIGHT / RELATED PUBLICATION DETAILS



ANNEX D - TITLE, CONSTRUCTION AND CHART NOTES



- 1 = 10 pt Medium Capitals Black
- 2 = 14 pt Medium Capitals Black
- 3 = 36 pt Medium Capitals Black
- 4 = 24 pt Medium Capitals Black; [qualifying text, i.e. APPROACHES TO; TO; AND; INCLUDING; \(SHEET 2\)](#)
- 5 = 10 pt Medium Capitals Black
- 6 = 8 pt Bold U/L Black
- 7 = 8 pt Medium U/L Black (Blocked 75mm)
- 8 = To be included in proposed Corporate Style Guide or within symbology appendix.
- 9 = 7 pt Medium Capitals
- 10 = 7 pt Medium U/L (Blocked 50mm); [3.00mm line space between note title and note body. 2.47mm line space for the note body. If there are multiple paragraphs within notes, paragraph spacing must be 3.00mm.](#)

ANNEX E - TIDAL STREAM AND TIDAL LEVEL PANELS

Tidal Streams referred to HW at DEVONPORT

Hours	Geographical Position	A		B		C		D		
		40°23'.7 S 147 49.2 E	40°38.9' S 148 05.1 E	40°27.7' S 148 32.3 E	40°58.9' S 148 24.1 E					
6 Before High Water		304	0.8 0.5	259	0.6 0.5	286	0.9 0.7	024	0.2 0.2	
5		286	0.8 0.6	297	2.6 2.1	234	1.6 1.3	024	0.3 0.3	
4		268	0.8 0.6	297	3.1 2.5	232	1.8 1.4	021	0.3 0.3	
3		231	0.5 0.4	293	2.7 2.2	214	1.8 1.4	340	0.2 0.2	
2		178	0.4 0.3	283	1.8 1.4	213	1.7 1.3	309	0.1 0.1	
1		159	0.4 0.3	233	0.8 0.6	208	1.2 1.0	249	0.1 0.1	
High Water		0	0.6 0.5	098	1.1 0.8	186	0.3 0.2	208	0.2 0.1	
1 After High Water		+1	123	0.8 0.6	107	2.2 1.7	036	0.6 0.7	168	0.3 0.3
2		+2	113	0.8 0.6	113	3.0 2.4	057	1.9 1.5	166	0.3 0.3
3		+3	111	0.6 0.5	106	2.5 2.0	055	2.3 1.8	190	0.2 0.2
4		+4	110	0.4 0.3	085	1.5 1.2	049	2.1 1.7	228	0.1 0.1
5		+5	104	0.2 0.2	152	0.8 0.6	004	1.0 0.8	355	0.1 0.1
6		+6	357	0.2 0.1	176	0.7 0.6	328	0.8 0.7	019	0.1 0.1

Tidal Levels referred to Datum of Soundings

Place	Lat S	Long E	Heights in metres above datum					
			HAT	MHHW	MLHW	MSL	MHLW	MLLW
Samarai Island	10° 37'	150° 40'	1.6	1.4	0.9	0.8	0.6	0.1
Doimi Island	10 42	150 42	2.0	1.7	1.1	1.0	0.9	0.3

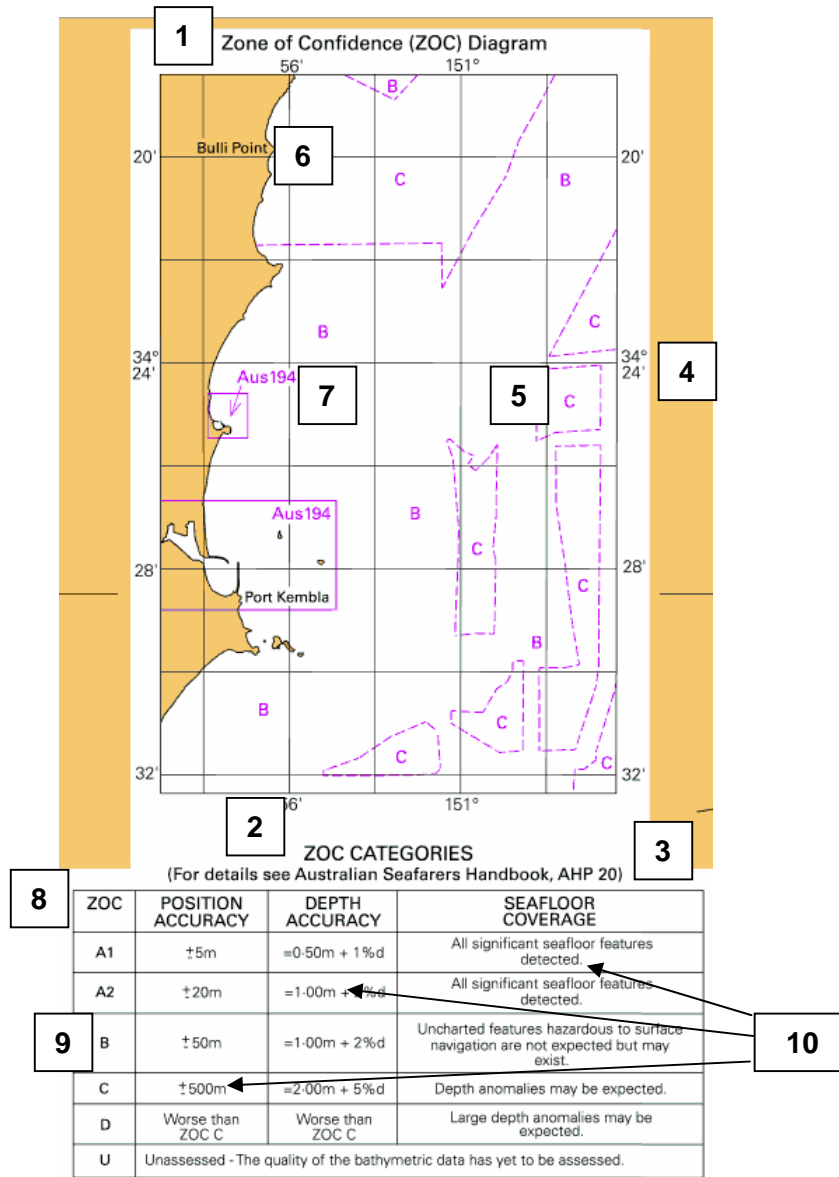
- 1 = 8 pt Medium U/L Black (NOTE: Name of place of reference is to be in CAPITALS).
- 2 = 6 pt Light Black
- 3 = 6 pt Medium U/L Black
- 4 = 6 pt Light U/L Black
- 5 = 6 pt Medium Capitals Magenta
- 6 = 8 pt Medium U/L Black
- 7 = 7 pt Medium U/L Black
- 8 = 7 pt Light U/L Black
- 9 = 7 pt Light Black
- 10 = 7 pt Light U/L Black
- 11 = 7 pt Light Capitals Black
- 12 = 7 pt Medium Black

NOTE: Where a selected tidal station falls outside the limit of the Chart, the Tides and Geodetic Officer may be of the opinion that the tidal levels for the station are not indicative of the tidal levels for the Chart, e.g. a Chart that is entirely within enclosed waters but the only tide station observations are in open water. Where this occurs, a note may be placed under the Tidal Levels table as follows:

Tidal level values shown are approximate and may differ for the area of this chart.

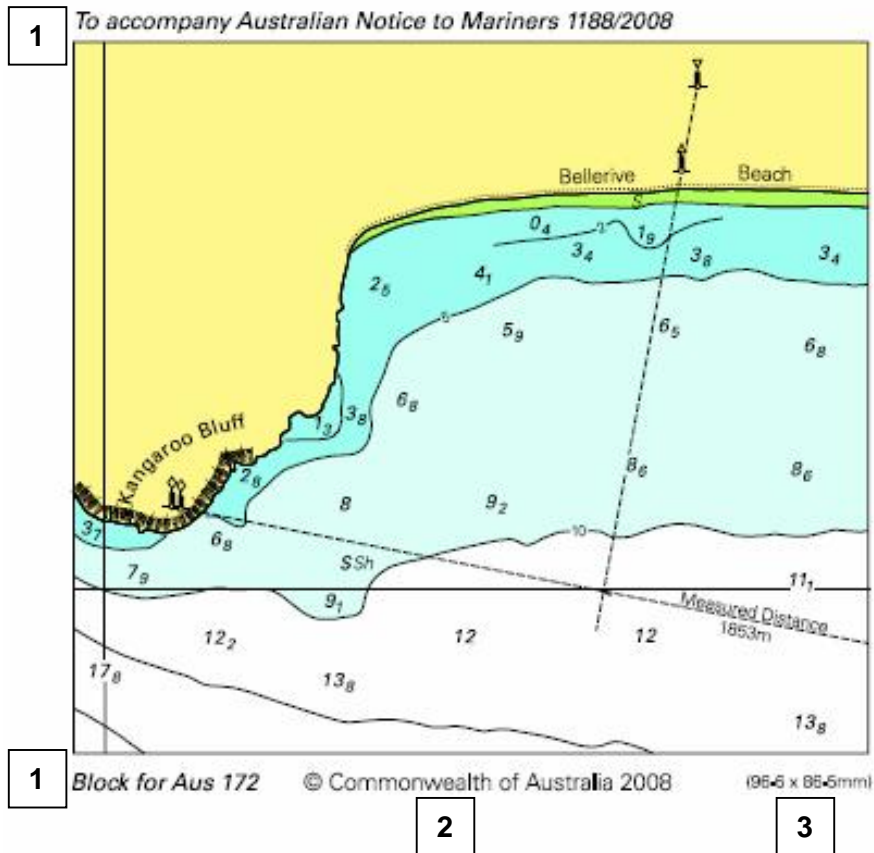
Where required, this note must be shown in 7 pt Medium Black text, with the left edge of the text aligned with the left edge of the panel.

ANNEX F - ZOC DIAGRAMS



- 1 = 8 pt Medium U/L Black
- 2 = 8 pt Medium Capitals Black
- 3 = 7 pt Medium U/L Black
- 4 = 7 pt Light Black
- 5 = 7 pt Medium Capitals Magenta. 6 pt may be used in congested areas.
- 6 = 6 pt Medium U/L Black (For identifying land features for location purposes). Italics must be used for Hydrographic features.
- 7 = 7 pt Medium U/L Magenta. 6 pt may be used in congested areas.
- 8 = 7 pt Medium Capitals Black
- 9 = 6 pt Medium Capitals Black
- 10 = 6 pt Light U/L Black

ANNEX G – NOTICES TO MARINERS BLOCK MARGINALIA



- 1 = 8 pt Medium U/L Italics Black
- 2 = 8 pt Light U/L Black
- 3 = 6 pt Light U/L Black