



15 March 2024

Edition 6

# AUSTRALIAN NOTICES TO MARINERS

## Notices 204 - 233

Published fortnightly by the Australian Hydrographic Office



Australian Notices to Mariners are the authority for correcting charts and publications published by the Australian Hydrographic Office covering Australia, Papua New Guinea, Solomon Islands, Australian Antarctic Territory and Timor-Leste.

Commodore R.L. PHILLIPS RAN  
*Hydrographer of Australia*

---

### SECTIONS.

- I. **Australian Notices to Mariners, including blocks and notes.**
- II. **Hydrographic Reports.**

### SUPPLEMENTS.

- I. **Tracings**
  - II. **Cumulative List of Australian Notices to Mariners.**
  - III. **Cumulative List of Temporary and Preliminary Australian Notices to Mariners.**
  - IV. **Temporary and Preliminary Notices in force.**
- 
- 

© Commonwealth of Australia 2024

This work is copyright. Apart from any use permitted under the Copyright Act 1968, no part may be reproduced by any process, adapted, communicated or commercially exploited without prior written permission from The Commonwealth represented by the Australian Hydrographic Office.

## IMPORTANT NOTICE

This edition of Notices to Mariners includes all significant information affecting AHO products which the AHO has become aware of since the last edition. All reasonable efforts have been made to ensure the accuracy and completeness of the information, including third party information, on which these updates are based. The AHO regards third parties from which it receives information as reliable, however the AHO cannot verify all such information and errors may therefore exist. The AHO does not accept liability for errors in third party information.

---

## GENERAL INSTRUCTIONS

The substance of these notices should be inserted on the charts affected.

Bearings are referred to the true compass and are reckoned clockwise from North; those relating to lights are given as seen by an observer from seaward.

Positions quoted in notices relate to WGS84 which is the horizontal datum for all charts produced by the Australian Hydrographic Office.

The range quoted for a light is its nominal range.

Depths are with reference to the chart datum of each chart. Heights are above mean high water springs or mean higher high water, as appropriate.

The capital letter (P) or (T) after the number of any notice denotes a preliminary or temporary notice respectively, which are contained separately at the end of the permanent notices.

---

## REPORTING OF DANGERS

Mariners are particularly requested to notify the AUSTRALIAN HYDROGRAPHIC OFFICE, Locked Bag 8801 Wollongong, NSW 2500 (e-mail [datacentre@hydro.gov.au](mailto:datacentre@hydro.gov.au) or, alternatively by filling in and submitting the [Hydrographic Notes](#) forms located on the web site – [www.hydro.gov.au](http://www.hydro.gov.au)), immediately on the discovery of new dangers or suspected dangers to navigation. For changes or defects in aids to navigation notify AusSAR (Fax 02-6230 6868 or email [rccaus@amsa.gov.au](mailto:rccaus@amsa.gov.au)).

---

## AUTHORISED USE

Copies of Australian notices are available free of charge from the Australian Hydrographic Office (AHO) website ([www.hydro.gov.au](http://www.hydro.gov.au)) and through the eNotices (email) service ([www.hydro.gov.au/enotices/enotices.htm](http://www.hydro.gov.au/enotices/enotices.htm)).

Individual Notices may be copied for the purpose of inserting Notice substance on official charts and publications. Paper copies may be printed by chart agents and distributed to customers on a cost recovery basis. Participating chart agents are listed on the AHO website as providing a 'Paper Notices to Mariners' service ([www.hydro.gov.au/webapps/jsp/agents/agents-list.jsp](http://www.hydro.gov.au/webapps/jsp/agents/agents-list.jsp)). Copies of the notices may not be sold for profit without prior written agreement.

## NUMERICAL INDEX OF NOTICES TO MARINERS

### Edition No 6

Notices	Aus Chart, INT Chart, ENC Cell, AHP, BA Pubs
204	Aus 604
205	Products - New Charts and New Editions to be published shortly
206	Aus 209
207	Aus 262
208	Aus 236
209	Aus 837, 839
210	Aus 827, 828
211	Aus 826
212	Aus 617
213	Aus 20, 309
214	Aus 752
215	Aus 343, 346, 485
216	Aus 171, 173
217(T)	Aus 195
218(T)	Aus 245
219(T)	Aus 817
220(T)	Aus 817
221(T)	Aus 312, 314, 315, 319, 321
222(T)	Aus 65, 327, 742
223(T)	Aus 745, 746
224(T)	Aus 328, 329, 745
225(T)	Aus 59
226(T)	Aus 328, 329, 744, 4723, INT 723
227(T)	Aus 343, 346, 485, 776, 780, 781
228(T)	Aus 4074, INT 74
229(T)	Aus 357, 487
230(T)	Aus 151
231(T)	Aus 171, 173, 795, 796
232(T)	Aus 171
233(T)	Aus 767

## NUMERICAL INDEX OF CHARTS AFFECTED

### Edition No 6

Aus Chart	Notices
Aus 20	213
Aus 59	225(T)
Aus 65	222(T)
Aus 151	230(T)
Aus 171	216, 231(T), 232(T)
Aus 173	216, 231(T)
Aus 195	217(T)
Aus 209	206
Aus 236	208
Aus 245	218(T)
Aus 262	207
Aus 309	213
Aus 312	221(T)
Aus 314	221(T)
Aus 315	221(T)
Aus 319	221(T)
Aus 321	221(T)
Aus 327	222(T)
Aus 328	224(T), 226(T)
Aus 329	224(T), 226(T)
Aus 343	215, 227(T)
Aus 346	215, 227(T)
Aus 357	229(T)
Aus 485	215, 227(T)
Aus 487	229(T)
Aus 604	204
Aus 617	212
Aus 742	222(T)
Aus 744	226(T)
Aus 745	223(T), 224(T)
Aus 746	223(T)
Aus 752	214
Aus 767	233(T)
Aus 776	227(T)
Aus 780	227(T)
Aus 781	227(T)
Aus 795	231(T)
Aus 796	231(T)
Aus 817	219(T), 220(T)
Aus 826	211
Aus 827	210
Aus 828	210
Aus 837	209
Aus 839	209
Aus 4074	228(T)
Aus 4723	226(T)

INT Chart	Notices
INT 74	228(T)
INT 723	226(T)

**204 AUSTRALIA - Products - New Charts, New Editions, Withdrawn Charts**

Australian Hydrographic Office

**New Charts**

<i>Chart</i>	<i>Title and Geographical limits</i>	<i>Scale</i>	<i>Publication Date</i>	<i>Remarks</i>
NIL				

**New Electronic Navigation Chart (Aus ENC)**

<i>Cell Name</i>	<i>Title</i>	<i>Publication Date</i>	<i>Remarks</i>
AU5FFC01	Indian Ocean - Christmas Island - Flying Fish Cove	7 March 2024	AU5920P1 is withdrawn

**New Editions and Withdrawn Charts**

<i>Chart</i>	<i>Title</i>	<i>Scale</i>	<i>Publication Date</i>	<i>Remarks</i>
Aus 604 <b>(Edition 3)</b>	Southern Ocean - Macquarie Island and Approaches Plan: Hasselborough and Buckles Bays	1:100 000  1:15 000	15 March 2024	New edition with general updating throughout; including new bathymetric data. <b>Chart Aus 604 Edition 2 dated 13 July 2018 is now superseded and must be withdrawn from use.</b>

**Chart permanently withdrawn**

Charts listed above as withdrawn no longer meet chart carriage requirements and should be marked as "superseded" and replaced with the new chart/ new edition listed prior to passage through the area covered by the new chart.

When placing orders with a chart agent between notice of forthcoming edition and its publication, mariners should advise whether their order pertains to the current edition or the new edition.

For further details refer to the AHO website at [www.hydro.gov.au](http://www.hydro.gov.au) for new edition and new chart stock arrival information.

**205 AUSTRALIA - Products - New Charts and New Editions to be published shortly**

Australian Hydrographic Office

**New Charts to be published shortly**

<i>Chart</i>	<i>Title</i>	<i>Scale</i>	<i>Remarks</i>
NIL			

**New Editions to be published shortly**

<i>Chart</i>	<i>Title</i>	<i>Scale</i>	<i>Remarks</i>
NIL			

**206 AUSTRALIA - NEW SOUTH WALES - Port Stephens - Nav aids**

Transport for NSW

**Aus 209 [953/2023]**

Amend	light buoy to Q(3)10s		32° 41'.04 S	152° 08'.86 E
	light buoy to Fl.R.3s		32° 41'.05 S	151° 58'.87 E
	light beacon to Q(2)10s		32° 41'.57 S	152° 03'.80 E
	light buoy to Fl.Y.5s		32° 42'.66 S	152° 09'.42 E
	light buoy to Q(2)10s		32° 43'.01 S	152° 07'.96 E
Delete	topmark		32° 42'.91 S	151° 59'.13 E

**207 AUSTRALIA - QUEENSLAND - Cairns - Trinity Inlet - Wrecks; depths**

Former Notice - 1051(T)/2023 is cancelled  
Department of Defence

**Aus 262 (Trinity Inlet) [52/2024]**

Insert	depth, 6 <sub>3</sub> m	16° 55'.328 S	145° 47'.054 E
	depth, 2 <sub>6</sub> m, enclosed by danger circle with legend, <i>Wk</i>	16° 55'.395 S	145° 47'.109 E
Replace	wreck depth, 5 <sub>9</sub> m, with wreck depth, 6 <sub>7</sub> m	16° 56'.80 S	145° 47'.30 E
Delete	depth, 6 <sub>8</sub> m	16° 55'.32 S	145° 47'.09 E
	depth, 4 <sub>5</sub> m	16° 55'.37 S	145° 47'.12 E

**208 AUSTRALIA - QUEENSLAND - Moreton Bay - Scarborough - Light beacon**

Maritime Safety Queensland Notice 105/2024

**Aus 236 [181/2024]**

Amend	light beacon to <i>Dir WRG &amp; Fl.G.2s No7</i>	27° 11'.6 S	153° 06'.2 E
-------	--	-------------	--------------

**209 AUSTRALIA - QUEENSLAND - Newman Reef - Light beacon**

Former Notice - 31(T)/2023 is cancelled  
Australian Maritime Safety Authority Final ATH 4/2024

**Aus 837 [307/2023]**

Replace	beacon with west cardinal light beacon, Q(9)15s 7m 11M, with topmark	10° 03'.6 S	143° 10'.0 E
---------	--	-------------	--------------

**Aus 839 [51/2024]**

Replace	beacon with west cardinal light beacon, Q(9)15s 7m 11M, with topmark	10° 03'.6 S	143° 10'.0 E
---------	--	-------------	--------------

**210 AUSTRALIA - QUEENSLAND - Taylors Beach - Light buoys; coastline; chart note; legend**

Maritime Safety Queensland Notice 60/2024

Note: position of existing chart notes may vary on certain charts.

**Aus 827 [5/2024]**

Insert	accompanying block	18° 37'.0 S	146° 20'.0 E
	accompanying chart note, ESTUARY AND RIVER ENTRANCES	19° 26'.5 S	146° 47'.0 E

**Aus 828 [342/2023]**

Insert	accompanying block	18° 35'.0 S	146° 20'.0 E
	accompanying chart note, ESTUARY AND RIVER ENTRANCES	18° 45'.0 S	146° 03'.0 E

**211 AUSTRALIA - QUEENSLAND - Upstart Bay - Light buoys; channel**

Maritime Safety Queensland Notice 54/2024

**Aus 826 [5/2024]**

Insert	accompanying block	19° 44'.0 S	147° 34'.0 E
--------	--------------------	-------------	--------------

**212 AUSTRALIA - CORAL SEA - Coringa Islets to Willis Islets - MPA limit; chart notes**

Australian Hydrographic Office

Note: position of existing chart notes may vary on certain charts.

**Aus 617 (Willis Islets) [384/2016]**

Delete	MPA limit, between	16° 31'.5 S	150° 03'.3 E
		16° 29'.8 S	150° 05'.0 E

**Aus 617 [384/2016]**

Insert	accompanying chart note, ENVIRONMENTALLY SENSITIVE SEA AREA (ESSA), in N border	16° 24'.0 S	150° 11'.2 E
--------	---	-------------	--------------

Replace	chart note, MARINE PROTECTED AREAS (MPA), with accompanying chart note, PARTICULARLY SENSITIVE SEA AREA (PSSA), in N border	16° 24'.0 S	150° 09'.7 E
---------	---	-------------	--------------

Delete	MPA limit, between	16° 46'.0 S	149° 38'.6 E
		16° 46'.0 S	149° 48'.1 E
		16° 24'.1 S	150° 11'.1 E
	MPA limit, between	17° 11'.0 S	149° 38'.6 E
		17° 11'.0 S	150° 04'.9 E
		16° 55'.9 S	150° 25'.0 E

**213 AUSTRALIA - NORTHERN TERRITORY - Clarence Strait - Depths**

Department of Defence

**Aus 20 [NE 18/8/2023]**

Insert	depth, 9m, enclosed by contour	12° 01'.57 S	131° 08'.96 E
	depth, 3m, enclosed by contour	12° 04'.70 S	131° 08'.33 E
	depth, 9m, enclosed by contour	12° 08'.57 S	130° 54'.68 E

**Aus 309 [54/2024]**

Insert	depth, 9m, enclosed by contour	12° 08'.57 S	130° 54'.68 E
--------	--------------------------------	--------------	---------------

Delete	depth, 10m	12° 08'.6 S	130° 55'.0 E
--------	------------	-------------	--------------

**214 AUSTRALIA - WESTERN AUSTRALIA - Dongara - Scientific instruments**

University of Western Australia

**Aus 752 [144/2024]**

Insert	special conical light buoy, Fl. Y. 2·5s, without topmark	29° 11'.16 S	114° 51'.75 E
	special conical light buoy, Fl. Y. 2·5s, without topmark	29° 11'.88 S	114° 49'.91 E

**215 AUSTRALIA - SOUTH AUSTRALIA - Kangaroo Island - Scientific instruments southwestwards**

South Australian Research and Development Institute

**Aus 343 [110/2022]**

Delete	# and legend, ODAS	36° 08'.8 S	135° 54'.2 E
	# and legend, ODAS	36° 11'.3 S	135° 51'.6 E

**Aus 346 [58/2024]**

Delete	# and legend, ODAS	36° 08'.8 S	135° 54'.2 E
	# and legend, ODAS	36° 11'.3 S	135° 51'.6 E

**Aus 485 [58/2024]**

Delete	# and legend, ODAS	36° 08'.8 S	135° 54'.2 E
	# and legend, ODAS	36° 11'.3 S	135° 51'.6 E

**216 AUSTRALIA - TASMANIA - Bruny Island - Chalky Point - Rock**  
 Marine and Safety Tasmania

**Aus 171 [104/2024]**

Insert danger line, between

43° 07'.21 S	147° 20'.34 E
43° 07'.24 S	147° 20'.34 E
43° 07'.25 S	147° 20'.35 E
43° 07'.24 S	147° 20'.37 E
43° 07'.22 S	147° 20'.37 E

Delete depth, 2<sub>5</sub>m

43° 07'.2 S	147° 20'.3 E
-------------	--------------

**Aus 173 [805/2023]**

Insert danger line, between

43° 07'.21 S	147° 20'.34 E
43° 07'.24 S	147° 20'.34 E
43° 07'.25 S	147° 20'.35 E
43° 07'.24 S	147° 20'.37 E
43° 07'.22 S	147° 20'.37 E



**217(T)/2024 AUSTRALIA - NEW SOUTH WALES - Port Kembla - Harbour works**

*Former Notice* - 594(T)/2021 is cancelled  
Port Authority of New South Wales Notice 03/2021

Works associated with the construction of an LNG import facility are in progress at berth 101 (34° 27'.53 S 150° 53'.85 E).

**Chart temporarily affected - Aus 195****218(T)/2024 AUSTRALIA - QUEENSLAND - Gladstone - Calliope River - Wreck salvaged**

*Former Notice* - 1017(T)/2023 is cancelled  
Maritime Safety Queensland

Cancel this notice on receipt.

**Chart formerly affected - Aus 245****219(T)/2024 AUSTRALIA - QUEENSLAND - Great Sandy Strait - Light buoy**

Maritime Safety Queensland Notice 146/2017, 145(T)/2021; 70/2020, 112/2024

A starboard lateral light buoy, *Fl.G.2-5s NG1*, exists in position 25° 20'.20 S 153° 01'.40 E.

**Chart temporarily affected - Aus 817****220(T)/2024 AUSTRALIA - QUEENSLAND - Great Sandy Strait - Light buoys**

*Former Notice* - 842(T)/2021 is cancelled  
Maritime Safety Queensland Notice 61(T)/2016, 146/2017, 145(T)/2021; 70/2020; 112/2024

Cancel this notice on receipt.

**Chart formerly affected - Aus 817****221(T)/2024 AUSTRALIA - TIMOR SEA - Sahul Banks - Survey operations**

*Former Notice* - 159(T)/2024 is cancelled  
SLR Consulting , Australian Maritime Safety Authority Auscoast Warning 78/2024

Survey vessel *Geo Coral*, with a 9260m towed array, and support vessels *Mariska G* and *No Limit* are conducting survey operations in an area bounded by the following positions:

12° 34'.32 S 124° 32'.98 E  
12° 35'.54 S 126° 02'.39 E  
11° 28'.02 S 126° 03'.20 E  
11° 22'.56 S 126° 14'.10 E  
11° 06'.73 S 126° 10'.48 E  
10° 48'.80 S 125° 33'.15 E  
11° 47'.46 S 124° 34'.15 E.

Mariners are advised to navigate with caution in the area. 7M clearance requested.

**Chart temporarily affected - Aus 312 - Aus 314 - Aus 315 - Aus 319 - Aus 321****222(T)/2024 AUSTRALIA - WESTERN AUSTRALIA - Barrow Island - Rock installation; cable laying operations northwestwards**

Van Oord Offshore Energy , Nexans

Rock installation vessel *Bravenes*, cable lay vessel *Nexans Skagerrak* and a ROV are conducting rock installation and cable laying operations between positions 20° 28'.32 S 114° 52'.68 E and 20° 41'.52 S 115° 25'.26 E

Mariners are advised to navigate with caution in the area. 1M clearance requested.

**Chart temporarily affected - Aus 65 - Aus 327 - Aus 742**

**223(T)/2024 AUSTRALIA - WESTERN AUSTRALIA - Bateman Bay to Bills Bay - Scientific instruments**  
Sydney Institute of Marine Science

Subsurface scientific instruments exist as follows:

<i>Position</i>	<i>Metres below surface</i>
23° 02'.58 S 113° 47'.45 E	4.9
23° 02'.86 S 113° 47'.16 E	14.6
23° 02'.88 S 113° 49'.06 E	13
23° 02'.89 S 113° 47'.53 E	17.2
23° 02'.89 S 113° 47'.91 E	18.1
23° 02'.89 S 113° 48'.28 E	14.2
23° 02'.89 S 113° 48'.67 E	17.1
23° 05'.09 S 113° 48'.53 E	8.7
23° 07'.27 S 113° 45'.09 E	3
23° 07'.28 S 113° 45'.43 E	7
23° 07'.42 S 113° 41'.37 E	66
23° 07'.45 S 113° 41'.83 E	66
23° 07'.48 S 113° 44'.95 E	3
23° 07'.50 S 113° 42'.28 E	64
23° 07'.57 S 113° 42'.72 E	60
23° 07'.61 S 113° 43'.58 E	42
23° 07'.62 S 113° 43'.15 E	52
23° 07'.64 S 113° 44'.08 E	30
23° 07'.64 S 113° 46'.13 E	2
23° 08'.15 S 113° 45'.22 E	8.

**Chart temporarily affected - Aus 745 - Aus 746**

**224(T)/2024 AUSTRALIA - WESTERN AUSTRALIA - Cape Range - Tantabiddi - Scientific instruments**  
Sydney Institute of Marine Science

Subsurface scientific instruments exist as follows:

<i>Position</i>	<i>Metres below surface</i>
21° 52'.83 S 113° 54'.33 E	86
21° 53'.03 S 113° 54'.67 E	84
21° 53'.31 S 113° 55'.03 E	75
21° 53'.46 S 113° 55'.44 E	57
21° 53'.71 S 113° 55'.79 E	36.

**Chart temporarily affected - Aus 328 - Aus 329 - Aus 745**

**225(T)/2024 AUSTRALIA - WESTERN AUSTRALIA - Dampier - Holden Point - Light buoy restored**

*Former Notice* - 680(T)/2023 is cancelled  
Pilbara Ports Authority Notice D8/2024

Cancel this notice on receipt.

**Chart formerly affected - Aus 59**

**226(T)/2024 AUSTRALIA - WESTERN AUSTRALIA - Muiron Islands - FPSO off station northwestwards**  
Woodside Energy Ltd

The FPSO, *Pyrenees Venture* (21° 32'.47 S 114° 06'.97 E), is off station; a special light buoy, *Fl.Y* exists in situ.

**Chart temporarily affected - Aus 328 - Aus 329 - Aus 744 - Aus 4723 (INT 723)**

**227(T)/2024 AUSTRALIA - SOUTH AUSTRALIA - Glenelg to Lincoln Canyon - Survey operations**  
EGS Survey Pty Ltd

On or about 28 March 2024, MV *Samson Explorer* is conducting survey operations, with a 900m towed array, in an area bound by the following positions:

34° 56'.30 S 138° 29'.20 E  
35° 36'.42 S 135° 57'.96 E  
35° 59'.72 S 135° 40'.98 E  
36° 06'.38 S 135° 46'.92 E  
35° 44'.18 S 136° 07'.17 E  
35° 34'.34 S 137° 11'.64 E  
35° 19'.50 S 138° 07'.14 E  
34° 59'.15 S 138° 30'.41 E.

Vessels involved in the operations will display appropriate lights and shapes and will monitor VHF Ch 16.

Mariners are advised to navigate with caution in the area and keep well clear.

**Chart temporarily affected - Aus 343 - Aus 346 - Aus 485 - Aus 776 - Aus 780 - Aus 781**

**228(T)/2024 SOUTHERN OCEAN - Macquarie Island - Scientific instrument southwestwards**  
CSIRO

A subsurface scientific instrument, 90m below the surface, exists in the position 55° 47'.62 S 152° 43'.56 E.

**Chart temporarily affected - Aus 4074 (INT 74)**

**229(T)/2024 AUSTRALIA - VICTORIA - Golden Beach - Scientific instruments southeastwards**  
*Former Notice - 1029(T)/2023 is cancelled*  
RPS Group

Subsurface scientific instruments exist as follows:

<i>Position</i>	<i>Depth below surface</i>
38° 07'.56 S 147° 31'.92 E	10m
38° 19'.38 S 147° 17'.04 E	15m
38° 28'.50 S 147° 35'.28 E	50m.

**Chart temporarily affected - Aus 357 - Aus 487**

**230(T)/2024 AUSTRALIA - VICTORIA - Western Port - North Arm - Geotechnical and geophysical operations**  
Ports Victoria Notice 106(T)/2024

Barge *Sea Lift 3* and support vessels *Allunga*, *Sea Transfer 1* and *Sea Punt* are conducting geotechnical and geophysical works in North Arm, north of No31 light buoy (38° 18'.30 S 145° 14'.12 E).

A 400m exclusion zone exists around the barge.

Mariners are advised to navigate with caution in the area and are requested to pass at slow speed with minimal wash.

**Chart temporarily affected - Aus 151**

**231(T)/2024 AUSTRALIA - TASMANIA - Hobart to Storm Bay - Survey operations completed**  
*Former Notice - 201(T)/2024 is cancelled*  
Precision Hydrographic Services

Cancel this notice on receipt.

**Chart formerly affected - Aus 171 - Aus 173 - Aus 795 - Aus 796**

**232(T)/2024 AUSTRALIA - TASMANIA - River Derwent - Bowen Bridge - Light relit**

*Former Notice* - 545(T)/2023 is cancelled

Marine and Safety Tasmania Notice M105/2024

Cancel this notice on receipt.

**Chart formerly affected - Aus 171**

**233(T)/2024 AUSTRALIA - TASMANIA - Saint Helens Point - Fish aggregating device restored**

*Former Notice* - 176(T)/2024 is cancelled

Marine and Safety Tasmania Notice M101/2024

Cancel this notice on receipt.

**Chart formerly affected - Aus 767**

II

**HYDROGRAPHIC REPORTS**

NIL

*To accompany Australian Notice to Mariners 210/2024*

ESTUARY AND RIVER ENTRANCES

The crossing of coastal bars and entry to rivers and estuaries is potentially dangerous. Bars and entrances are dynamic in nature, hence the depth and preferred approach may vary. Leading beacons and other navigational aids may not always indicate the best approach. If mariners are unsure of the condition at a particular bar or entrance, local information should be sought prior to crossing.

*Note for chart Aus 827*

*To accompany Australian Notice to Mariners 212/2024*

ENVIRONMENTALLY SENSITIVE SEA AREA  
(ESSA)

Areas of this chart are Environmentally Sensitive Sea Areas (ESSA). Areas within this marine protected area have restrictions on access and activities. For details see Mariners Handbook for Australian Waters AHP 20.

*Note for chart Aus 617*

*To accompany Australian Notice to Mariners 210/2024*

ESTUARY AND RIVER ENTRANCES

The crossing of coastal bars and entry to rivers and estuaries is potentially dangerous. Bars and entrances are dynamic in nature, hence the depth and preferred approach may vary. Leading beacons and other navigational aids may not always indicate the best approach. If mariners are unsure of the condition at a particular bar or entrance, local information should be sought prior to crossing.

*Note for chart Aus 828*

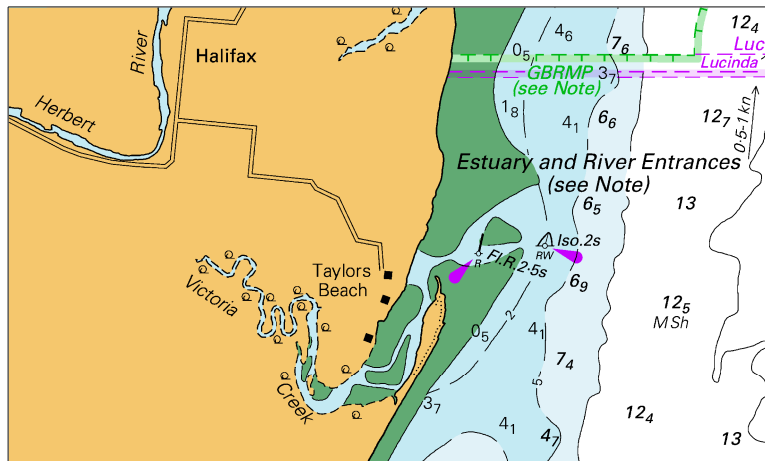
*To accompany Australian Notice to Mariners 212/2024*

PARTICULARLY SENSITIVE SEA AREA  
(PSSA)

The area shown is an IMO approved Particularly Sensitive Sea Area (PSSA). For details see Mariners Handbook for Australian Waters AHP 20.

*Note for chart Aus 617*

To accompany Australian Notice to Mariners 210/2024

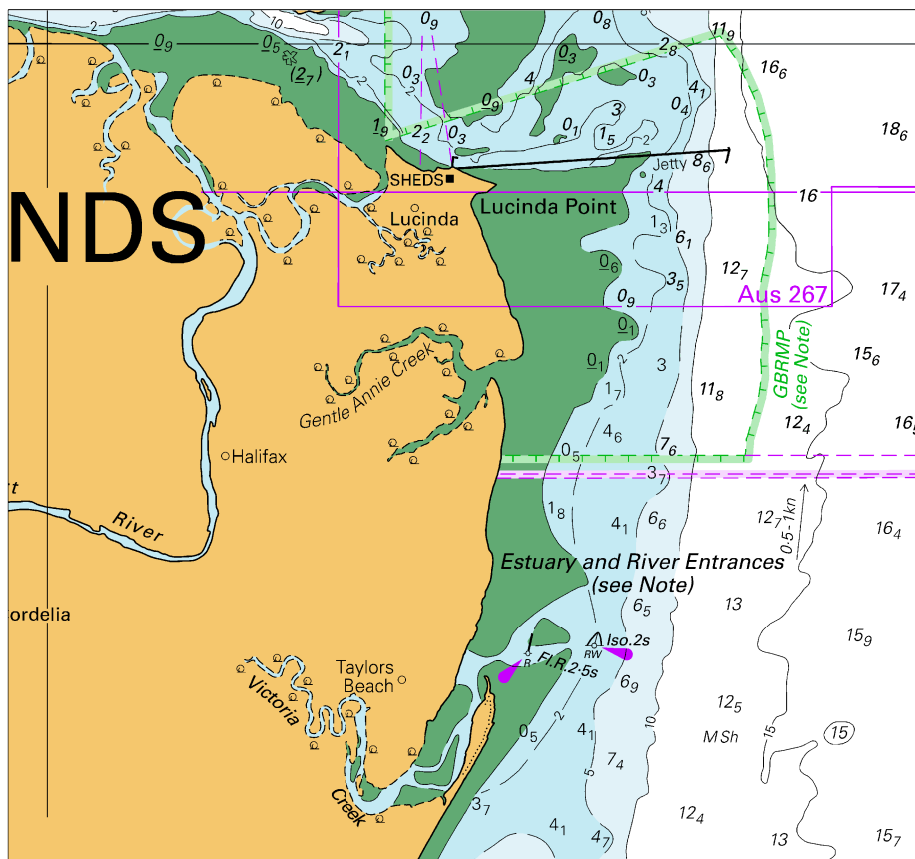


Block for chart Aus 827

(100.9 x 60.3mm)

© Commonwealth of Australia 2024

To accompany Australian Notice to Mariners 210/2024



Block for chart Aus 828

© Commonwealth of Australia 2024

(120.9 x 112.4mm)



To accompany Australian Notice to Mariners 211/2024



Block for chart Aus 826

(102.5 x 37.4mm)

© Commonwealth of Australia 2024