



AUSTRALIAN NOTICES TO MARINERS

Notices 1 - 48

**Including
List of Temporary and Preliminary Notices in force**

Published fortnightly by the Australian Hydrographic Office



Australian Notices to Mariners are the authority for correcting charts and publications published by the Australian Hydrographic Office covering Australia, Papua New Guinea, Solomon Islands, Australian Antarctic Territory and Timor-Leste.

Commodore R.L. PHILLIPS RAN
Hydrographer of Australia

SECTIONS.

- I. **Australian Notices to Mariners, including blocks and notes.**
- II. **Hydrographic Reports.**

SUPPLEMENTS.

- I. **Tracings**
 - II. **Cumulative List of Australian Notices to Mariners.**
 - III. **Cumulative List of Temporary and Preliminary Australian Notices to Mariners.**
 - IV. **Temporary and Preliminary Notices in force.**
-
-

© Commonwealth of Australia 2024

This work is copyright. Apart from any use permitted under the Copyright Act 1968, no part may be reproduced by any process, adapted, communicated or commercially exploited without prior written permission from The Commonwealth represented by the Australian Hydrographic Office.

IMPORTANT NOTICE

This edition of Notices to Mariners includes all significant information affecting Australian Hydrographic Office (AHO) products which the AHO has become aware of since the last edition. All reasonable efforts have been made to ensure the accuracy and completeness of the information, including third party information, on which these updates are based. The AHO regards third parties from which it receives information as reliable, however the AHO cannot verify all such information and errors may therefore exist. The AHO does not accept liability for errors in third party information.

GENERAL INSTRUCTIONS

The substance of these notices should be inserted on the charts affected.

Bearings are referred to the true compass and are reckoned clockwise from North; those relating to lights are given as seen by an observer from seaward.

Positions quoted in notices relate to WGS84 which is the horizontal datum for all charts produced by the Australian Hydrographic Office.

The range quoted for a light is its nominal range.

Depths are with reference to the chart datum of each chart. Heights are above mean high water springs or mean higher high water, as appropriate.

The capital letter (P) or (T) after the number of any notice denotes a preliminary or temporary notice respectively, which are contained separately at the end of the permanent notices.

REPORTING OF DANGERS

Mariners are particularly requested to notify the AUSTRALIAN HYDROGRAPHIC OFFICE, Locked Bag 8801 Wollongong, NSW 2500 (e-mail datacentre@hydro.gov.au or, alternatively by filling in and submitting the [Hydrographic Notes](#) forms located on the web site – www.hydro.gov.au), immediately on the discovery of new dangers or suspected dangers to navigation. For changes or defects in aids to navigation notify AusSAR (Fax 02-6230 6868 or email rccaus@amsa.gov.au).

AUTHORISED USE

Copies of Australian notices are available free of charge from the AHO website (www.hydro.gov.au) and through the eNotices (email) service (www.hydro.gov.au/enotices/enotices.htm).

Individual Notices may be copied for the purpose of inserting Notice substance on official charts and publications. Paper copies may be printed by chart agents and distributed to customers on a cost recovery basis. Participating chart agents are listed on the AHO website as providing a 'Paper Notices to Mariners' service (www.hydro.gov.au/webapps/jsp/agents/agents-list.jsp). Copies of the notices may not be sold for profit without prior written agreement.

NUMERICAL INDEX OF NOTICES TO MARINERS

Edition No 1

Notices	Aus Chart, INT Chart, ENC Cell, AHP, BA Pubs
1	Aus 198
2	Aus 323, 730
3	AusTides 2024
4	Aus 192
5	Aus 826, 827
6	Aus 293, 294, 299, 700, 841
7	Aus 326, 327
8	Aus 745
9	Aus 4601, INT 601
10	Aus 4601, INT 601
11(T)	Aus 806, 807, 808
12(T)	Aus 237
13(T)	Aus 262
14(T)	Aus 250
15(T)	Aus 236
16(T)	Aus 256
17(T)	Aus 377, 840
18(T)	Aus 377, 840, 841
19(T)	Aus 25, 26
20(T)	Aus 309, 315, 316, 318
21(T)	Aus 65
22(T)	Aus 319
23(T)	Aus 320, 322
24(T)	Aus 57, 327, 742, 4722, 4723, INT 722, 723
25(T)	Aus 327, 742
26(T)	Aus 328, 329, 4723, INT 723
27(T)	Aus 327, 328, 742, 4722, 4723, INT 722, 723
28(T)	Aus 332
29(T)	Aus 332
30(T)	Aus 118
31(T)	Aus 754
32(T)	Aus 328
33(T)	Aus 745
34(T)	Aus 343, 485, 780, 4709, INT 709
35(T)	Aus 130
36(T)	Aus 136
37(T)	Aus 778
38(T)	Aus 357, 487
39(T)	Aus 143, 157
40(T)	Aus 143
41(T)	Aus 144
42(T)	Aus 151
43(T)	Aus 151, 801
44(T)	Aus 801
45(T)	Aus 151
46(T)	Aus 173, 795, 796
47(T)	Aus 163
48(T)	TEMPORARY AND PRELIMINARY NOTICES

NUMERICAL INDEX OF CHARTS AFFECTED

Edition No 1

Aus Chart	Notices
Aus 25	19(T)
Aus 26	19(T)
Aus 57	24(T)
Aus 65	21(T)
Aus 118	30(T)
Aus 130	35(T)
Aus 136	36(T)
Aus 143	39(T), 40(T)
Aus 144	41(T)
Aus 151	42(T), 43(T), 45(T)
Aus 157	39(T)
Aus 163	47(T)
Aus 173	46(T)
Aus 192	4
Aus 198	1
Aus 236	15(T)
Aus 237	12(T)
Aus 250	14(T)
Aus 256	16(T)
Aus 262	13(T)
Aus 293	6
Aus 294	6
Aus 299	6
Aus 309	20(T)
Aus 315	20(T)
Aus 316	20(T)
Aus 318	20(T)
Aus 319	22(T)
Aus 320	23(T)
Aus 322	23(T)
Aus 323	2
Aus 326	7
Aus 327	7, 24(T), 25(T), 27(T)
Aus 328	26(T), 27(T), 32(T)
Aus 329	26(T)
Aus 332	28(T), 29(T)
Aus 343	34(T)
Aus 357	38(T)
Aus 377	17(T), 18(T)
Aus 485	34(T)
Aus 487	38(T)
Aus 700	6
Aus 730	2
Aus 742	24(T), 25(T), 27(T)
Aus 745	8, 33(T)
Aus 754	31(T)
Aus 778	37(T)
Aus 780	34(T)
Aus 795	46(T)
Aus 796	46(T)
Aus 801	43(T), 44(T)
Aus 806	11(T)
Aus 807	11(T)
Aus 808	11(T)

Aus Chart	Notices
Aus 826	5
Aus 827	5
Aus 840	17(T), 18(T)
Aus 841	6, 18(T)
Aus 4601	9, 10
Aus 4709	34(T)
Aus 4722	24(T), 27(T)
Aus 4723	24(T), 26(T), 27(T)

INT Chart	Notices
INT 601	9, 10
INT 709	34(T)
INT 722	24(T), 27(T)
INT 723	24(T), 26(T), 27(T)

1 AUSTRALIA - Products - New Charts, New Editions, Withdrawn Charts

Australian Hydrographic Office

New Charts

<i>Chart</i>	<i>Title and Geographical limits</i>	<i>Scale</i>	<i>Publication Date</i>	<i>Remarks</i>
NIL				

New Electronic Navigation Chart (Aus ENC)

<i>Cell Name</i>	<i>Title</i>	<i>Publication Date</i>	<i>Remarks</i>
NIL			

New Editions and Withdrawn Charts

<i>Chart</i>	<i>Title</i>	<i>Scale</i>	<i>Publication Date</i>	<i>Remarks</i>
Aus 198 (Edition 3)	Australia - East Coast - New South Wales - Botany Bay and Port Hacking	1:25 000	5 January 2024	New edition with general updating throughout; including new bathymetric data and updates to nav aids. Chart Aus 198 Edition 2 dated 28 May 2021 is now superseded and must be withdrawn from use.

Chart permanently withdrawn

Charts listed above as withdrawn no longer meet chart carriage requirements and should be marked as "superseded" and replaced with the new chart/ new edition listed prior to passage through the area covered by the new chart.

When placing orders with a chart agent between notice of forthcoming edition and its publication, mariners should advise whether their order pertains to the current edition or the new edition.

For further details refer to the AHO website at www.hydro.gov.au for new edition and new chart stock arrival information.

2 AUSTRALIA - Products - New Charts and New Editions to be published shortly

Australian Hydrographic Office

New Charts to be published shortly

<i>Chart</i>	<i>Title</i>	<i>Scale</i>	<i>Remarks</i>
NIL			

New Editions to be published shortly

<i>Chart</i>	<i>Title</i>	<i>Scale</i>	<i>Remarks</i>
Aus 323	Australia - North West Coast - Western Australia - Adele Island to Lacepede Islands including King Sound	1:300 000	New edition with general updating throughout; including new bathymetric data.
Aus 730	Australia - North West Coast - Western Australia - Lamarck Island to Degerando Island	1:150 000	New edition with general updating throughout; including new bathymetric data.

3 AUSTRALIA - AusTides 2024

Australian Hydrographic Office

AusTides 2024 version 2.0.2 has been released. It contains fixes for the glitches detailed in ANTM 951/2023.

This latest release can be downloaded from <https://www.hydro.gov.au/software/products/downloads.htm>

Version 2.0.0 of this product has been withdrawn and superseded by 2.0.2.

4 AUSTRALIA - NEW SOUTH WALES - Twofold Bay - Eden - Snug Cove - Infrastructure; depths; mooring buoys

Port Authority of New South Wales

Aus 192 [NE 10/6/2022]

Insert accompanying block A 37° 04'.24 S 149° 54'.14 E

Aus 192 (Eden) [NE 10/6/2022]

Insert accompanying block B 37° 04'.38 S 149° 54'.32 E

5 AUSTRALIA - QUEENSLAND - Cape Bowling Green - Wreck southeastwards

Former Notice - 457(T)/2020 is cancelled

Maritime Safety Queensland

Aus 826 [993/2023]

Insert safe clearance depth, 15m, enclosed by danger circle with legend, Wk 19° 20'.27 S 147° 35'.97 E

Aus 827 [997/2023]

Insert safe clearance depth, 15m, enclosed by danger circle with legend, Wk 19° 20'.27 S 147° 35'.97 E

6 AUSTRALIA - TORRES STRAIT - Endeavour Strait to Boigu Island - Nav aids

Maritime Safety Queensland Notices 563/2023, 564/2023, 565/2023, 566/2023, 567/2023, 568/2023, 575/2023, 589/2023, 577/2023

Aus 293 [1001/2023]

Insert special conical light buoy, Fl.Y.2·5s, without topmark 10° 33'.765 S 142° 13'.335 E
starboard lateral conical light buoy, Fl.G.2·5s, without topmark 10° 35'.714 S 142° 13'.178 E

Aus 294 [123/2023]

Insert out of position special conical light buoy, Fl.Y.2·5s, without topmark 10° 44'.62 S 142° 16'.58 E
special conical light buoy, Fl.Y.2·5s, without topmark 10° 53'.82 S 142° 19'.27 E

Replace light beacon with port lateral cylindrical light buoy, Fl.R.2·5s, without topmark 10° 39'.0 S 142° 15'.9 E

Aus 294 (Approaches to Red Island Point) [123/2023]

Move light buoy 10° 49'.72 S 142° 21'.38 E
to light buoy 10° 49'.732 S 142° 21'.439 E
light buoy 10° 49'.76 S 142° 21'.36 E
to light buoy 10° 49'.786 S 142° 21'.414 E

Aus 299 [1001/2023]

Insert special conical light buoy, Fl.Y.2·5s, without topmark 10° 33'.765 S 142° 13'.335 E
port lateral cylindrical light buoy, Fl.R.2·5s, without topmark 10° 35'.351 S 142° 12'.552 E
starboard lateral conical light buoy, Fl.G.2·5s, without topmark 10° 35'.714 S 142° 13'.178 E

Delete light beacon 10° 35'.34 S 142° 12'.56 E

Aus 700 [959/2023]

Replace light beacon with port lateral cylindrical light buoy, Fl.R.2·5s, without topmark 10° 39'.0 S 142° 15'.9 E

Aus 841 [307/2023]

Insert special conical light buoy, Fl.Y.4s, without topmark 9° 16'.38 S 142° 19'.31 E
special conical light buoy, Fl.Y.4s, without topmark 9° 22'.32 S 142° 35'.36 E

7 AUSTRALIA - WESTERN AUSTRALIA - Cape Lambert - Scientific instrument northwards

RPS Group

Aus 326 [1046/2023]

Insert orange spherical light buoy, Q(5)Y.20s, without topmark 20° 16'.42 S 117° 15'.16 E

Delete depth, 29m 20° 16'.7 S 117° 15'.1 E

Aus 327 [603/2023]

Insert orange spherical light buoy, Q(5)Y.20s, without topmark 20° 16'.42 S 117° 15'.16 E

Delete depth, 29m 20° 16'.2 S 117° 15'.5 E

8 AUSTRALIA - WESTERN AUSTRALIA - Ningaloo Reef - Tantabiddi Passage - Light buoy*Former Notice - 845(T)/2022 is cancelled*

Department of Transport WA

Aus 745 [1008/2023]

Delete light buoy 21° 53'.6 S 113° 55'.7 E

9 AUSTRALIA - BASS STRAIT - Hogan Island - Nomenclature

Australian Maritime Safety Authority

Aus 4601 (INT 601) [1013/2023]Amend name to *Hogan Group* 39° 13'.0 S 147° 22'.0 E**10 NEW ZEALAND - North Island - Cape Egmont - Unexploded ordnance; precautionary area**

Land Information New Zealand Notice 25/80/2023

Aus 4601 (INT 601) [9/2024]Insert magenta dashed line with legend, *Precautionary Area*, between 38° 30'.9 S 174° 38'.1 E

39° 18'.6 S 173° 05'.3 E

39° 26'.1 S 173° 01'.2 E

40° 03'.1 S 173° 04'.2 E

40° 10'.1 S 173° 16'.2 E

39° 53'.6 S 174° 54'.9 E

accompanying chart note, UNEXPLODED ORDNANCE (UXO) 35° 10'.0 S 149° 05'.0 E

magenta legend, *Unexploded Ordnance (see Note)*, centred on 38° 15'.0 S 172° 54'.0 E

11(T)/2024 AUSTRALIA - NEW SOUTH WALES - Twofold Bay to Wattamolla - Fish aggregating devices off station eastwards

NSW Department of Primary Industries

The special light buoys are off station as follows:

<i>Charted position</i>	<i>Current position</i>	<i>Remarks</i>
36° 58'.78 S 150° 14'.73 E	37° 02'.96 S 150° 14'.78 E	<i>Fl. Y. 5s FAD (Nov-May)</i>
36° 25'.32 S 150° 15'.98 E	36° 26'.15 S 150° 15'.58 E	<i>Fl. Y. 5s FAD (Nov-May)</i>
35° 22'.73 S 150° 41'.78 E	35° 22'.98 S 150° 41'.52 E	<i>Fl. Y. 5s FAD (Oct-May)</i>
34° 41'.00 S 150° 59'.50 E	34° 41'.70 S 150° 59'.32 E	<i>Fl. Y. 5s FAD (Oct-May)</i>
34° 08'.36 S 151° 22'.62 E	34° 08'.54 S 151° 22'.50 E	<i>Fl. Y. 5s FAD (Oct-May).</i>

Chart temporarily affected - Aus 806 - Aus 807 - Aus 808

12(T)/2024 AUSTRALIA - QUEENSLAND - Brisbane River - Hamilton Reach - Dredging operations

Maritime Safety Queensland Notice 581(T)/2023

The barge *Ken Harvey* and support vessels are conducting dredging operations in the vicinity of position 27° 26'.77 S 153° 04'.40 E.

The barge will deploy anchors 50m from the barge when dredging is in progress.

The barge will monitor VHF Ch 12.

Mariners are advised to navigate with caution in the area and are requested to pass at slow speed with minimal wash.

Chart temporarily affected - Aus 237

13(T)/2024 AUSTRALIA - QUEENSLAND - Cairns - Trinity Inlet - Wreck

Maritime Safety Queensland Notice 608(T)/2023

A wreck marked by a special light buoy, *Fl. Y. 2-5s*, exists in position 16° 56'.56 S 145° 47'.06 E.

Mariners are advised to navigate with caution in the area.

Chart temporarily affected - Aus 262

14(T)/2024 AUSTRALIA - QUEENSLAND - Hay Point - Scientific instrument

Maritime Safety Queensland Notice 591(T)/2023

A special light buoy, *Fl. Y. 2-5s*, exists in position 21° 17'.49 S 149° 17'.98 E.

Chart temporarily affected - Aus 250

15(T)/2024 AUSTRALIA - QUEENSLAND - Moreton Bay - Amity Point - Scientific instrument

Maritime Safety Queensland Notice 599(T)/2023

A lit scientific platform, *Fl. Y. 2s*, exists in position 27° 23'.57 S 153° 26'.37 E.

Mariners are advised to navigate with caution in the area.

Chart temporarily affected - Aus 236

16(T)/2024 AUSTRALIA - QUEENSLAND - Townsville - Light beacon removed

Maritime Safety Queensland Notice 585(T)/2023

The port lateral light beacon, *Q.R* (19° 14'.57 S 146° 50'.12 E), has been removed; a port lateral light buoy, *Q.R*, exists in situ.

Chart temporarily affected - Aus 256

17(T)/2024 AUSTRALIA - TORRES STRAIT - Yorke Islands - Scientific instrument
Maritime Safety Queensland Notice 592(T)/2023

A special light buoy, *Fl(5)Y.20s*, exists in position 9° 44'.70 S 143° 24'.29 E.

Chart temporarily affected - Aus 377 - Aus 840

18(T)/2024 AUSTRALIA - TORRES STRAIT - Yorke Islands to Boigu Island - Scientific instruments
Former Notice - 795(T)/2021 is cancelled
Maritime Safety Queensland Notice 592(T)/2023

Cancel this notice on receipt.

Chart formerly affected - Aus 377 - Aus 840 - Aus 841

19(T)/2024 AUSTRALIA - NORTHERN TERRITORY - Darwin - Emery Point to West Point - Survey operations completed
Former Notice - 1021(T)/2023 is cancelled
Northern Territory Government

Cancel this notice on receipt.

Chart formerly affected - Aus 25 - Aus 26

20(T)/2024 AUSTRALIA - NORTHERN TERRITORY - Timor Sea - Survey operations
INPEX

On or about 12 January 2024, MV *Geo Coral*, with a 10200m towed array, and support vessels will be conducting survey operations in an area bounded by the following positions:

12° 25'.44 S 128° 35'.73 E

12° 52'.69 S 129° 15'.85 E

13° 10'.97 S 129° 02'.98 E

12° 43'.69 S 128° 22'.83 E

Mariners are advised to navigate with caution in the area. 8M clearance requested.

Chart temporarily affected - Aus 309 - Aus 315 - Aus 316 - Aus 318

21(T)/2024 AUSTRALIA - WESTERN AUSTRALIA - Barrow Island - Town Point - Light buoy relit
Former Notice - 1060(T)/2023 is cancelled
Port of Barrow Island

Cancel this notice on receipt.

Chart formerly affected - Aus 65

22(T)/2024 AUSTRALIA - WESTERN AUSTRALIA - Browse Island - Drill rig northwards
Diamond Offshore

Drill rig *Ocean Apex* is conducting drilling operations in position 13° 22'.87 S 123° 24'.04 E.

Chart temporarily affected - Aus 319

23(T)/2024 AUSTRALIA - WESTERN AUSTRALIA - Browse Island - Drill rig westwards moved
Former Notice - 943(T)/2023 is cancelled
Diamond Offshore

Cancel this notice on receipt.

Chart formerly affected - Aus 320 - Aus 322

24(T)/2024 AUSTRALIA - WESTERN AUSTRALIA - Dampier - Drill rig
 MODU *Transocean Endurance*

Drill rig *Transocean Endurance* is anchored in position 20° 24'.90 S 116° 24'.00 E.

Chart temporarily affected - Aus 57 - Aus 327 - Aus 742 - Aus 4722 (INT 722) - Aus 4723 (INT 723)

25(T)/2024 AUSTRALIA - WESTERN AUSTRALIA - Dampier Archipelago - Brigadier Islands - Light buoy northwards

MetOcean

A special light buoy, *FI(5)Y.20s*, exists in position 20° 16'.78 S 116° 33'.71 E.

Chart temporarily affected - Aus 327 - Aus 742

26(T)/2024 AUSTRALIA - WESTERN AUSTRALIA - Exmouth Plateau - Survey operations completed

Former Notice - 979(T)/2023 is cancelled
 Shearwater

Cancel this notice on receipt.

Chart formerly affected - Aus 328 - Aus 329 - Aus 4723 (INT 723)

27(T)/2024 AUSTRALIA - WESTERN AUSTRALIA - Exmouth Plateau to Dampier - Pipe laying operations

Subsea 7

Vessel *Seven Oceanic* is conducting pipe laying operations in the Scarborough Field between approximate positions 19° 45'.0 S 113° 07'.0 E and 20° 15'.0 S 116° 28'.0 E.

Mariners are advised to navigate with caution in the area. 0.27M clearance requested.

Note: For e-notice users, please see full edition for map.

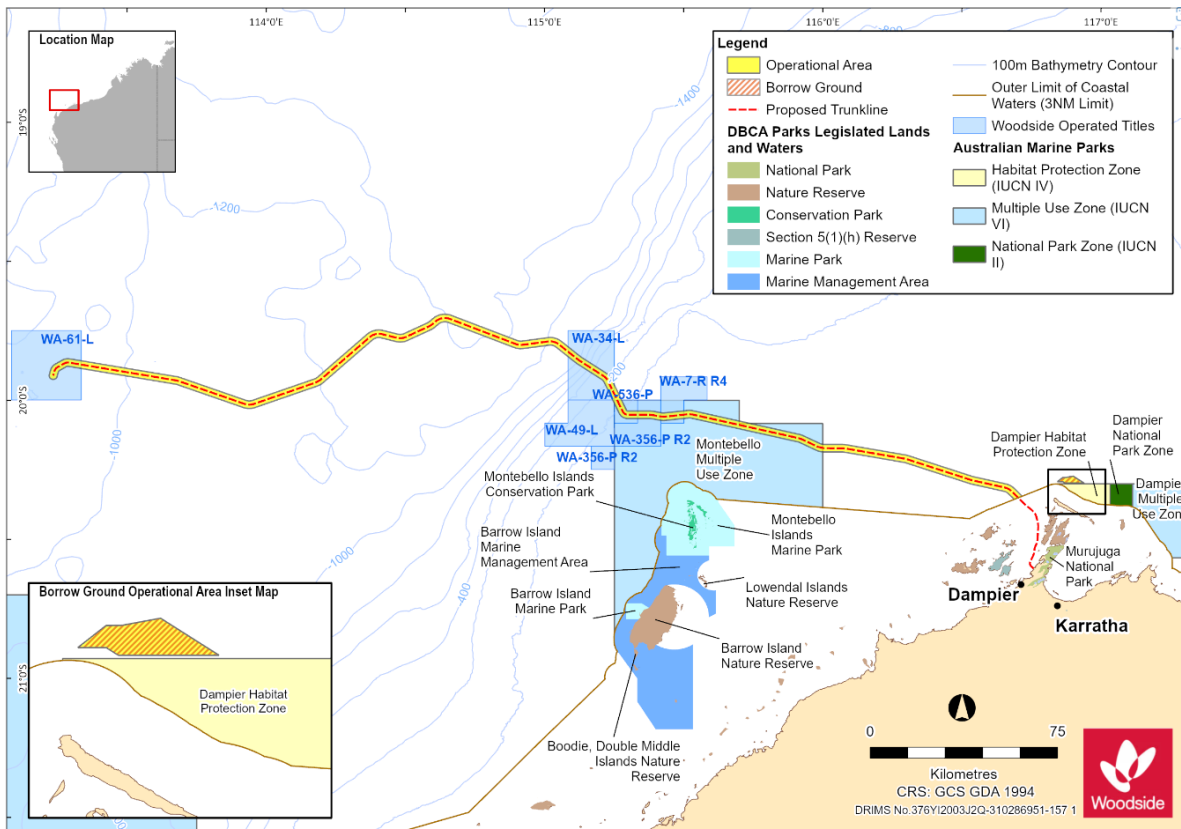


Chart temporarily affected - Aus 327 - Aus 328 - Aus 742 - Aus 4722 (INT 722) - Aus 4723 (INT 723)

28(T)/2024 AUSTRALIA - WESTERN AUSTRALIA - Kalbarri - Scientific instrument
RPS Group

A special light buoy, Q(5)Y.20s, exists in position 27° 24'.16 S 114° 03'.01 E.

Chart temporarily affected - Aus 332

29(T)/2024 AUSTRALIA - WESTERN AUSTRALIA - Kalbarri - Survey operations northwards completed
Former Notice - 1024(T)/2023 is cancelled
Australian Maritime Safety Authority

Cancel this notice on receipt.

Chart formerly affected - Aus 332

30(T)/2024 AUSTRALIA - WESTERN AUSTRALIA - King George Sound - Gio Batta Patch - Light buoy damaged
Department of Transport WA Notice 5910/2023

The west cardinal light buoy, VQ(9)10s (35° 02'.88 S 117° 59'.54 E), has been damaged; a temporary light exists on the buoy, Q.Y.

Chart temporarily affected - Aus 118

31(T)/2024 AUSTRALIA - WESTERN AUSTRALIA - Laurance Reef to Quinns Rocks - Scientific instruments
Department of Transport WA Notice 5902/2023

Special light buoys, Fl.Y.2.5s, exist in the following positions:

31° 39'.60 S 115° 39'.88 E

31° 40'.63 S 115° 40'.24 E

31° 33'.28 S 115° 37'.30 E.

Chart temporarily affected - Aus 754

32(T)/2024 AUSTRALIA - WESTERN AUSTRALIA - Montebello Islands - Drilling operations northwards
Woodside Energy Ltd

On or about 8 January 2024, drill-rig *Valaris DPS-1* and support vessels will be conducting drilling operations at 19° 54'.70 S 113° 08'.04 E

Mariners are advised to navigate with caution in the area. 0.27M clearance requested.

Chart temporarily affected - Aus 328

33(T)/2024 AUSTRALIA - WESTERN AUSTRALIA - Norwegian Bay - Beacon obscured
Department of Transport WA Notice 5805/2023

The rear leading beacon is obscured and currently not visible.

The recommended track may no longer indicate the best passage through the reef.

Mariners are advised to navigate with caution in the area.

Chart temporarily affected - Aus 745

34(T)/2024 AUSTRALIA - SOUTH AUSTRALIA - Althorpe Islands - Light obscured
Australian Maritime Safety Authority ATH 16(T)/2023

The rear leading light, Fl.5s 107m 19M, is obscured and may not be visible.

Mariners are advised to navigate with caution in the area.

Chart temporarily affected - Aus 343 - Aus 485 - Aus 780 - Aus 4709 (INT 709)

35(T)/2024 AUSTRALIA - SOUTH AUSTRALIA - Port Adelaide - Light beacon restored

Former Notice - 540(T)/2023 is cancelled

Hydro Survey

Cancel this notice on receipt.

Chart formerly affected - Aus 130**36(T)/2024 AUSTRALIA - SOUTH AUSTRALIA - Spencer Gulf - Point Lowly - Scientific instrument**

Department for Infrastructure and Transport SA Notice 75(T)/2023

A subsurface scientific instrument, 1.5m above seabed, exists in position 33° 00'.46 S 137° 47'.53 E.

Mariners are advised to navigate with caution in the area.

Chart temporarily affected - Aus 136**37(T)/2024 AUSTRALIA - SOUTH AUSTRALIA - Spencer Gulf - Flinders Channel - Light beacons unlit**

Department for Infrastructure and Transport SA Notice 01(T)/2024

The following light beacons are unlit:

Fl.G.2s No 9 (32° 42'.84 S 137° 48'.96 E)

Fl.G.4s No 13 (32° 39'.61 S 137° 46'.30 E)

Fl.G.2s No 15 (32° 38'.99 S 137° 46'.15 E)

Chart temporarily affected - Aus 778**38(T)/2024 AUSTRALIA - VICTORIA - Ninety Mile Beach - Platform relit eastwards**

Former Notice - 725(T)/2023 is cancelled

Australian Maritime Safety Authority

Cancel this notice on receipt.

Chart formerly affected - Aus 357 - Aus 487**39(T)/2024 AUSTRALIA - VICTORIA - Port Phillip - Point Richards - Light beacon unlit**

Parks Victoria Notice 516(T)/2023

The north cardinal light beacon, Q (38° 06'.81 S 144° 37'.29 E), is unlit.

Mariners are advised to navigate with caution in the area.

Chart temporarily affected - Aus 143 - Aus 157**40(T)/2024 AUSTRALIA - VICTORIA - Port Phillip - Rye - Harbour works completed**

Former Notice - 588(T)/2023 is cancelled

Parks Victoria Notice 538/2023

Cancel this notice on receipt.

Chart formerly affected - Aus 143**41(T)/2024 AUSTRALIA - VICTORIA - Port Phillip - Collins Bay - Light buoy off station**

Parks Victoria Notice 547(T)/2023

The special buoy, (38° 19'.10 S 144° 43'.64 E), is off station.

Chart temporarily affected - Aus 144

42(T)/2024 AUSTRALIA - VICTORIA - Western Port - Middle Spit Channel - Buoy off station
Parks Victoria Notice 488(T)/2023

The buoy, *No4* (38° 21'.46 S 145° 15'.52 E), is off station.

Mariners are advised to navigate with caution in the area.

Chart temporarily affected - Aus 151

43(T)/2024 AUSTRALIA - VICTORIA - Western Port - The Bluff to Tortoise Head - Scientific instruments
Ports Victoria Notice 521(T)/2023

Subsurface scientific instruments, 0.7m above seabed, exist in positions 38° 16'.8 S 145° 14'.8 E and 38° 25'.7 S 145° 16'.1 E.

Mariners are advised to navigate with caution in the area.

Chart temporarily affected - Aus 151 - Aus 801

44(T)/2024 AUSTRALIA - VICTORIA - Western Port - Cobb Bluff - Light buoy unlit
Parks Victoria Notice 513(T)/2023

The isolated danger light buoy, *Fl(2)5s* (38° 26'.37 S 145° 25'.35 E), is unlit.

Mariners are advised to navigate with caution in the area.

Chart temporarily affected - Aus 801

45(T)/2024 AUSTRALIA - VICTORIA - Western Port - Hastings Bight - Light beacon unlit
Parks Victoria Notice 511(T)/2023

The port lateral light beacon, *Fl.R.2s No2* (38° 19'.54 S 145° 13'.21 E), is unlit.

Mariners are advised to navigate with caution in the area.

Chart temporarily affected - Aus 151

46(T)/2024 AUSTRALIA - TASMANIA - Bruny Island - Cape Connella - Scientific instrument recovered
Former Notice - 466(T)/2023 is cancelled
Marine and Safety Tasmania Notice M448(T)/2023

Cancel this notice on receipt.

Chart formerly affected - Aus 173 - Aus 795 - Aus 796

47(T)/2024 AUSTRALIA - TASMANIA - Burnie - Scientific instrument northwards
Marine and Safety Tasmania Notice M437(T)/2023

A pink buoy exists in position 40° 57'.67 S 145° 56'.07 E.

Chart temporarily affected - Aus 163

48(T)/2024 AUSTRALIA - TEMPORARY AND PRELIMINARY NOTICES

Former Notice - 915(T)/2023 is cancelled
 Australian Hydrographic Office

<i>Notice</i>	<i>Charts affected</i>	<i>Locality and Subject</i>
754/2022	Aus357 487	BASS STRAIT Racon non operational
788/2022	Aus614	CORAL SEA <i>Diamond Islets</i> Shoaling
494/2019	Aus611 612	<i>Kenn Reefs and Frederick Reefs</i> Shoaling
21/2021	Aus618	<i>Middleton Reef</i> Unexploded ordnance
989/2017	Aus377	<i>Portlock Reefs</i> Reefs
228/2022 608/2023	Aus198 Aus198	NEW SOUTH WALES <i>Botany Bay</i> Light beacon destroyed Harbour works
701/2023	Aus200 489 809	<i>Cape Banks to Cabbage Tree Bay</i> Scientific instruments eastwards
709/2016 880/2021	Aus813 Aus813	<i>Cape Byron</i> Obstructions eastwards Light buoy off station northwards
808/2023	Aus222	<i>Clarence River</i> Scientific instrument
133/2023	Aus813	<i>Crabbes Creek Beach</i> Wreck eastwards
604/2020	Aus807 808	<i>Jervis Bay</i> Light buoy
997/2020	Aus806 807	<i>Merimbula Bay to Broulee Island</i> Scientific instruments
105/2021 61/2022 855/2023	Aus200 Aus200 Aus200	<i>Port Jackson</i> Jetties ruined Scientific instruments Drilling operations
549/2020 594/2021	Aus195 Aus195	<i>Port Kembla</i> Exclusion zone Harbour works
750/2023	Aus209	<i>Port Stephens</i> Scientific instruments
727/2022	Aus489 806 807 808 809 810 4601 4602	<i>Tathra to Seal Rocks</i> Obstructions
1050/2023	Aus192	<i>Twofold Bay</i> Wave attenuator
11/2024	Aus806 807 808	<i>Twofold Bay to Wattamolla</i> Fish aggregating devices off station eastwards

48(T)/2024 AUSTRALIA - TEMPORARY AND PRELIMINARY NOTICES

<i>Notice</i>	<i>Charts affected</i>	<i>Locality and Subject</i>
193/2023	Aus807	<i>Ulladulla</i> Wreck northeastwards
		NORTHERN TERRITORY
832/2022	Aus23	<i>Apsley Strait</i> Light buoy off station
891/2023	Aus22 309 310	<i>Bathurst Island</i> Pipe laying operations; survey operations westwards
834/2022	Aus309	<i>Beagle Gulf</i> Drill rig
765/2023	Aus20	<i>Clarence Strait</i> Obstructions; wrecks
211/2021	Aus26	<i>Darwin</i> Scientific instruments
622/2023	Aus26	Light beacon unlit
893/2023	Aus25	Mooring buoy off station
1022/2023	Aus25 26	Scientific instruments
1059/2023	Aus25 26	Dredging operations
678/2023	Aus310	<i>Goodrich Bank</i> Light buoy off station northwestwards
20/2024	Aus309 315 316 318	<i>Timor Sea</i> Survey operations
		QUEENSLAND
461/2017	Aus268	<i>Bowen</i> Obstruction
213/2018	Aus236	<i>Bribie Island</i> Shoaling
27/2018	Aus236	<i>Brisbane</i> Harbour works
875/2022	Aus237	<i>Brisbane River</i> Obstructions
877/2022	Aus237	Wreck
99/2023	Aus237	Obstruction; light buoy
396/2023	Aus237	Obstruction
753/2023	Aus237	Lights unlit
12/2024	Aus237	Dredging operations
236/2022	Aus242	<i>Bundaberg</i> Light buoy off station
388/2022	Aus242	Shoaling
1016/2023	Aus242	Dredging operations; scientific instruments
277/2022	Aus262	<i>Cairns</i> Wreck
733/2022	Aus262	Light buoys
1051/2023	Aus262	Wreck
1052/2023	Aus262	Wreck
13/2024	Aus262	Wreck
398/2023	Aus236 815	<i>Caloundra Head</i> Light unlit
105/2020	Aus827	<i>Cape Bowling Green</i> Obstruction; light buoy

48(T)/2024 AUSTRALIA - TEMPORARY AND PRELIMINARY NOTICES

<i>Notice</i>	<i>Charts affected</i>	<i>Locality and Subject</i>
247/2021	Aus256	<i>Cape Ferguson</i> Scientific instrument
663/2023	Aus832	<i>Cape Flattery</i> Scientific instrument
1053/2023	Aus831	<i>Cedar Bay</i> Wreck
195/2023	Aus256 827	<i>Cleveland Bay</i> Scientific instruments
72/2018	Aus830	<i>Fitzroy Island</i> Light buoys
738/2021	Aus265	<i>Fitzroy River</i> Scientific instrument
980/2021	Aus819	Scientific instrument
484/2023	Aus265 819	Scientific instrument
782/2018	Aus615	<i>Flinders Reef</i> Shoaling
741/2021	Aus817	<i>Fraser Island</i> Shoaling
64/2021	Aus245	<i>Gladstone</i> Harbour works
563/2023	Aus245	Scientific instrument
811/2023	Aus245	Scientific instruments
1017/2023	Aus245	Wreck
555/2020	Aus814	<i>Gold Coast</i> Scientific instrument
490/2022	Aus814	<i>Gold Coast Seaway</i> Light buoy destroyed eastwards
357/2023	Aus814	Wreck eastwards
523/2017	Aus821 824 825	<i>Great Barrier Reef</i> Shoaling
842/2021	Aus817	<i>Great Sandy Strait</i> Light buoys
613/2023	Aus250	<i>Hay Point</i> Obstruction; light buoy
758/2023	Aus250	Mooring buoy
14/2024	Aus250	Scientific instrument
215/2018	Aus259	<i>Hinchinbrook Channel</i> Wreck
360/2023	Aus259	Light buoy off station
361/2023	Aus259 828	<i>Hinchinbrook Island</i> Light beacon destroyed
249/2021	Aus260 367 822	<i>Holt Island to Hexham Island</i> Shoaling
548/2019	Aus821 824	<i>Hydrographers Passage</i> Shoaling

48(T)/2024 AUSTRALIA - TEMPORARY AND PRELIMINARY NOTICES

<i>Notice</i>	<i>Charts affected</i>	<i>Locality and Subject</i>
488/2019	Aus303	<i>Karumba</i> Wreck northwards
526/2023	Aus6	Scientific instruments
759/2023	Aus6	Shoaling
972/2023	Aus252	<i>Laguna Quays</i> Shoaling; nav aids
429/2020	Aus250	<i>Mackay</i> Obstruction; light buoy
614/2023	Aus250	Obstruction; light buoy
736/2022	Aus236	<i>Moreton Bay</i> Mooring buoy
891/2022	Aus236 814 815	Obstruction
893/2022	Aus236	Light beacon unreliable
946/2022	Aus236	Light buoy unlit
242/2023	Aus236	Light beacon unlit
813/2023	Aus236	Obstruction; light buoy
15/2024	Aus236	Scientific instrument
814/2023	Aus236 814 815	<i>Moreton Island</i> Survey operations northwards
31/2023	Aus837 839	<i>Newman Reef</i> Beacon
707/2023	Aus815	<i>Noosa Head</i> Scientific instrument
470/2017	Aus816	<i>North Gardner Bank</i> Foul ground
452/2022	Aus814	<i>North Stradbroke Island</i> Wreck
362/2023	Aus827 828	<i>Orpheus Island</i> Light buoy removed
422/2022	Aus814	<i>Palm Beach</i> Light buoy off station
332/2021	Aus839 841	<i>Poll Islet</i> Wreck
895/2022	Aus236	<i>Pumicestone Channel</i> Wreck, light buoy
710/2023	Aus814	<i>Surfers Paradise</i> Light buoy off station; obstruction eastwards
1008/2020	Aus256	<i>Townsville</i> Wreck
701/2022	Aus256	Channel widening works; nav aids
67/2023	Aus256	Shoaling
68/2023	Aus255 256 268 825 826 827 828 829	Obstructions
244/2023	Aus256	Mooring buoy
816/2023	Aus256	Pump discharge
16/2024	Aus256	Light beacon removed
1026/2022	Aus826	<i>Upstart Bay</i> Obstructions

48(T)/2024 AUSTRALIA - TEMPORARY AND PRELIMINARY NOTICES

<i>Notice</i>	<i>Charts affected</i>	<i>Locality and Subject</i>
603/2019 138/2023	Aus4 Aus4	<i>Weipa</i> Scientific instruments Light buoy off station
536/2022 764/2023	Aus262 830 Aus262	<i>Yorkeys Knob</i> Lights altered Shoaling; light buoy
SOUTH AUSTRALIA		
34/2024	Aus343 485 780 4709	<i>Althorpe Islands</i> Light obscured
1026/2023	Aus348	<i>Cape Buffon</i> Light unlit
436/2017	Aus485 780	<i>Fleurieu Peninsula</i> Hulk; prohibited area
81/2021 803/2021	Aus781 Aus130 780 781	<i>Gulf St Vincent</i> Artificial reef Scientific instruments
584/2023	Aus780	<i>Kangaroo Island</i> Light beacon unlit
1071/2023	Aus130 781	<i>Largs Bay to Brighton</i> Scientific instruments
723/2023	Aus777	<i>Lucky Bay</i> Dredging operations
492/2021	Aus341 342 343	<i>Masillon Island to Rocky Island</i> Islands out of position
291/2021	Aus130	<i>Port Adelaide</i> Shoaling
1027/2023	Aus136	<i>Port Bonython</i> Scientific instrument
632/2023	Aus485 781	<i>Port Giles</i> Light beacon unlit eastwards
724/2023	Aus134	<i>Port Lincoln</i> Light beacon destroyed
42/2023 36/2024 37/2024	Aus776 777 Aus136 Aus778	<i>Spencer Gulf</i> Scientific instruments Scientific instrument Light beacons unlit
909/2022	Aus120	<i>Thevenard</i> Light altered
998/2022	Aus777 778	<i>Two Hummock Point to Point Riley</i> Scientific instruments
587/2022	Aus777	<i>Wallaroo</i> Harbour works
TASMANIA		
912/2023	Aus487 800 802	<i>Bass Strait</i> Survey operations

48(T)/2024 AUSTRALIA - TEMPORARY AND PRELIMINARY NOTICES

<i>Notice</i>	<i>Charts affected</i>	<i>Locality and Subject</i>
733/2020 47/2024	Aus163 Aus163	<i>Burnie</i> Harbour works Scientific instrument northwards
522/2020	Aus173	<i>D'Entrecasteaux Channel</i> Harbour works; light buoys
263/2018 916/2022 83/2023 375/2023	Aus164 Aus164 Aus164 Aus164	<i>Devonport</i> Shoaling Virtual AIS Harbour works Berth
913/2023	Aus179 487 798 800	<i>Furneaux Group</i> Shoaling; islands out of position
730/2023	Aus173 795	<i>Huon River</i> Wreck
167/2023	Aus179	<i>King Island</i> Platform, submarine cable, prohibited area
876/2023	Aus177 792	<i>Macquarie Harbour</i> Scientific instruments
673/2021 1034/2023	Aus766 797 Aus766 797	<i>Maria Island</i> Scientific instruments Light buoy unlit northeastwards
183/2020 677/2021	Aus171 174 Aus171	<i>North West Bay</i> Infrastructure Mooring area
780/2023	Aus790	<i>Perkins Island to Rocky Cape</i> Scientific instruments
627/2016	Aus171 796	<i>Pipe Clay Head to Pitt Water</i> Scientific instruments
1017/2020	Aus796	<i>Pitt Water</i> Wreck
722/2021	Aus167	<i>Port Dalrymple</i> Harbour works
839/2023	Aus798	<i>Ringarooma Bay</i> Scientific instrument
545/2023 639/2023	Aus171 Aus171 173	<i>River Derwent</i> Light unlit Kelp longlines; light buoys
784/2023	Aus163 164 167 487 790 798 800	<i>Rocky Cape to East Sandy Point</i> Shoaling
337/2021 27/2022	Aus841 Aus841	TORRES STRAIT <i>Boigu Island</i> Shoaling Shoaling
857/2023	Aus294 296 301 700 842	<i>Cook Reef</i> Scientific instruments southwards
1049/2020	Aus842	<i>Deliverance Island</i> Shoaling

48(T)/2024 AUSTRALIA - TEMPORARY AND PRELIMINARY NOTICES

<i>Notice</i>	<i>Charts affected</i>	<i>Locality and Subject</i>
1025/2021	Aus839	<i>Great North East Channel</i> Scientific instrument
938/2023	Aus292 293 301 700 839 841	<i>Great North East Channel to Adolphus Channel</i> Survey operations northwards
286/2023	Aus299	<i>Horn Island</i> Wreck
976/2023	Aus293 299	<i>Thursday Island</i> Mooring buoy removed
17/2024	Aus377 840	<i>Yorke Islands</i> Scientific instrument
VICTORIA		
493/2021	Aus143	<i>Barwon Head</i> Light buoy withdrawn eastwards
905/2023	Aus357 487	<i>Cape Conran</i> Subsea operations southwards
630/2022	Aus140 348 349	<i>Cape Duquesne</i> Scientific instruments
542/2023	Aus357 487 802	<i>Corner Inlet</i> Scientific instruments eastwards
81/2022	Aus157	<i>Geelong</i> Survey
634/2023	Aus357 487	<i>Golden Beach</i> Scientific instruments southeastwards
1028/2023	Aus357 487	Scientific instruments southeastwards
1029/2023	Aus357 487	Scientific instruments southeastwards
747/2022	Aus357 487	<i>Ninety Mile Beach</i> Traffic separation scheme southwestwards
112/2023	Aus357 487	Virtual AIS southeastwards
832/2023	Aus143 151 349 487 801 802	<i>Phillip Island</i> Research operations southwards
160/2023	Aus349	<i>Port Fairy Bay</i> Scientific instrument

48(T)/2024 AUSTRALIA - TEMPORARY AND PRELIMINARY NOTICES

<i>Notice</i>	<i>Charts affected</i>	<i>Locality and Subject</i>
		<i>Port Phillip</i>
1292/2019	Aus143 155	Light beacon unlit
42/2020	Aus155	Obstruction
350/2021	Aus153 157	Scientific instruments
409/2021	Aus157	Scientific instrument
413/2021	Aus157	Light buoys; AIS
542/2021	Aus143 155	Dredging operations
618/2021	Aus155	Obstructions
1004/2021	Aus155	Light buoy unlit
1032/2021	Aus143	Beacon destroyed
1033/2021	Aus155	Buoy
294/2022	Aus143 157	Exclusion zone
914/2022	Aus157	Artificial reef
589/2023	Aus143	Light beacon destroyed
727/2023	Aus155	Harbour works
834/2023	Aus143 155 157	Scientific instruments
907/2023	Aus143 144	Light beacon maintenance works
909/2023	Aus155	Light beacon destroyed
948/2023	Aus143	Light beacon removed
1032/2023	Aus144	Light buoy unlit
1033/2023	Aus155	Light buoy off station westwards
39/2024	Aus143 157	Light beacon unlit
41/2024	Aus144	Light buoy off station
		<i>Port Phillip Bay</i>
465/2023	Aus143 155	Wreck
		<i>Port Welshpool to McLoughlins Entrance</i>
895/2020	Aus181	Shoaling
		<i>Portland</i>
416/2021	Aus140	Shoaling
		<i>Portland Bay</i>
219/2020	Aus140 349	Scientific instruments
		<i>Venus Bay</i>
1047/2022	Aus801	Scientific instrument
		<i>Western Port</i>
664/2021	Aus151	Shoaling
665/2021	Aus151	Light beacons unlit
859/2021	Aus151	Exclusion zone
90/2022	Aus151 801 4709	Exclusion zone
804/2022	Aus151	Jetty closed
42/2024	Aus151	Buoy off station
43/2024	Aus151 801	Scientific instruments
44/2024	Aus801	Light buoy unlit
45/2024	Aus151	Light beacon unlit
		WESTERN AUSTRALIA
		<i>Ashburton Island</i>
647/2021	Aus64 328 743 744	Scientific instrument northwards
		<i>Barrow Island</i>
291/2019	Aus328	Well abandonment works northwestwards
718/2023	Aus328	Subsea operations northwestwards
942/2023	Aus65 742	Subsea operations
		<i>Bonaparte Archipelago</i>
987/2021	Aus37 320 729 730	Shoaling
535/2023	Aus730	Obstruction

48(T)/2024 AUSTRALIA - TEMPORARY AND PRELIMINARY NOTICES

<i>Notice</i>	<i>Charts affected</i>	<i>Locality and Subject</i>
679/2023	Aus319 320	<i>Browse Island</i> Accommodation vessel northwestwards
820/2023	Aus319 320 4603 4722	Light altered northwestwards
22/2024	Aus319	Drill rig northwards
623/2022	Aus115	<i>Bunbury</i> Harbour works
287/2022	Aus328 329 744 745	<i>Bundegi Reef</i> Scientific instrument
978/2023	Aus116	<i>Cape Leeuwin</i> Historic wreck southwards
944/2023	Aus323 732 733	<i>Cape Leveque</i> Survey operations
821/2023	Aus335	<i>Cape Naturaliste</i> Scientific instrument northwestwards
130/2022	Aus73	<i>Carnarvon</i> Shoaling
623/2023	Aus73	Dredging operations
767/2023	Aus73	Obstructions
1062/2023	Aus73	Light beacon unlit
896/2023	Aus319	<i>Cartier Island</i> Drill rig southwestwards
1063/2023	Aus117	<i>Cockburn Sound</i> Scientific instruments
292/2023	Aus57 59 327 742	<i>Dampier</i> Scientific instruments
680/2023	Aus59	Light buoy removed
719/2023	Aus57 59 327	Survey operations; dredging operations; pipe laying operations
822/2023	Aus57	Scientific instrument
24/2024	Aus57 327 742 4722 4723	Drill rig
455/2023	Aus57 327	<i>Dampier Archipelago</i> Wreck
945/2023	Aus327 742	Mooring buoy unlit northwards
25/2024	Aus327 742	Light buoy northwards
293/2023	Aus57 327	<i>Dampier Archipelago</i> Scientific instrument northwards
897/2023	Aus65 327 742	<i>Double Island</i> Platform unlit eastwards
1078/2015	Aus318 319 727 728	<i>East Holothuria Reef</i> Shoaling
898/2023	Aus319 322 328 329	<i>Eugene McDermott Shoal to North West Cape</i> Scientific instruments
1064/2023	Aus4723	<i>Exmouth Plateau</i> Scientific instruments
27/2024	Aus327 328 742 4722 4723	<i>Exmouth Plateau to Dampier</i> Pipe laying operations

48(T)/2024 AUSTRALIA - TEMPORARY AND PRELIMINARY NOTICES

<i>Notice</i>	<i>Charts affected</i>	<i>Locality and Subject</i>
401/2021 1023/2023 1065/2023	Aus112 117 754 Aus112 Aus112 117	<i>Fremantle</i> Dredging operations Scientific instrument Scientific instrument
1066/2023	Aus117	<i>Fremantle to Garden Island</i> Survey operations
367/2023	Aus332	<i>Gantheaume Bay</i> Scientific instrument northwestwards
1032/2022 769/2023	Aus755 Aus116 755	<i>Geographe Bay</i> Scientific instruments Scientific instruments
770/2023 1068/2023	Aus81 Aus81	<i>Geraldton</i> Harbour works Light buoy withdrawn
980/2023	Aus754	<i>Hilarys Boat Harbour</i> Light buoy damaged and unlit
625/2023 28/2024	Aus332 Aus332	<i>Kalbarri</i> Scientific instrument Scientific instrument
981/2023	Aus732 733	<i>Karrakatta Rock</i> Historic wreck
212/2022 30/2024	Aus118 Aus118	<i>King George Sound</i> Scientific instruments Light buoy damaged
404/2021	Aus40 41	<i>Koolan Island</i> Mooring buoy
627/2023	Aus324	<i>Lagrange Bay</i> Scientific instruments
31/2024	Aus754	<i>Laurance Reef to Quinns Rocks</i> Scientific instruments
900/2023	Aus65 742	<i>Lowendal Islands</i> Light altered
982/2023	Aus325	<i>Mermaid Reef</i> Scientific instrument
109/2023 32/2024	Aus327 742 4723 Aus328	<i>Montebello Islands</i> Light buoy Drilling operations northwards
1036/2022	Aus754	<i>Mullaloo</i> Scientific instruments
628/2023	Aus746	<i>Ningaloo Reef</i> Scientific instrument
33/2024	Aus745	<i>Norwegian Bay</i> Beacon obscured
1025/2023	Aus754	<i>Ocean Reef Boat Harbour</i> Lights to be decommissioned
		<i>Port Geographe Marina</i>

48(T)/2024 **AUSTRALIA - TEMPORARY AND PRELIMINARY NOTICES**
773/2023 Aus116 Dredging operations

<i>Notice</i>	<i>Charts affected</i>	<i>Locality and Subject</i>
		<i>Port Hedland</i>
330/2023	Aus53	Scientific instruments
579/2023	Aus53	Light beacon installation works
		<i>Port Hedland to Cuvier Abyssal</i>
40/2023	Aus53 326 327 328 4070 4071 4603 4708 4722 4723	Cable laying operations
		<i>Port Walcott</i>
1285/2019	Aus55 326	Tide gauge
		<i>Port of Ashburton</i>
1075/2021	Aus64 743	Scientific instrument
538/2023	Aus64	Harbour works
		<i>Princess Royal Harbour</i>
111/2023	Aus118	Marine farm; light buoys
		<i>Rottnest Island</i>
212/2020	Aus754	Scientific instruments northwestwards
774/2023	Aus112	Rock
		<i>South Fremantle</i>
629/2023	Aus117	Scientific instruments westwards
		<i>South West Break to Staggie Reef</i>
1039/2022	Aus754	Scientific instruments
		<i>Thevenard Island</i>
721/2023	Aus64 328 743 744 4723	Platform unlit southwards
864/2023	Aus328 743 744	Scientific instrument northwestwards
1069/2023	Aus64 328 743 744	Oil field to be decommissioned
		<i>Thevenard Island to Muiron Islands</i>
1070/2023	Aus328 329 744	Subsea operations northwestwards
		<i>Torbay to King George Sound</i>
630/2023	Aus118	Scientific instruments
		<i>Trigg Island</i>
509/2022	Aus112	Scientific instruments westwards
		<i>Wilson Head</i>
631/2023	Aus336	Scientific instrument
		INDIAN OCEAN
		<i>Christmas Island</i>
183/2022	Aus920	Mooring buoy off station
		<i>Cocos Islands</i>
904/2023	Aus607	Light buoy
		<i>Roo Rise</i>
867/2023	Aus4708 4723	Light buoy off station
		PACIFIC OCEAN
785/2022	Aus4604	Scientific instruments
		PAPUA NEW GUINEA
		<i>Ava Point</i>
792/2022	Aus4604 PNG507	Light unlit
		<i>Batumata Point</i>
826/2020	PNG506 507 623	Shoaling

48(T)/2024 AUSTRALIA - TEMPORARY AND PRELIMINARY NOTICES

<i>Notice</i>	<i>Charts affected</i>	<i>Locality and Subject</i>
789/2018	Aus4622	<i>Bismarck Sea</i> Fish aggregating devices
771/2020	PNG379 647	<i>Boera Head</i> Light unlit
278/2023	PNG516 637	<i>Boli Point</i> Light unlit
279/2023	PNG516 637	<i>Bomatu Point</i> Light unlit
327/2022	PNG509 512	<i>Bonvouloir Islands</i> Light unlit
974/2023	Aus399 4622 PNG397 684	<i>Buka Passage</i> Light beacon unlit
890/2023	Aus4060 4604 4622 PNG545 546	<i>Cape Lambert</i> Light unlit northwards
963/2020	PNG647 648	<i>Caution Bay</i> Light beacon damaged
481/2021	PNG647	Light beacon unlit
1057/2023	PNG379 505 647	Light unlit
564/2020	PNG673	<i>Dampier Strait</i> Light buoys off station
668/2020	Aus841	<i>Dauan Island</i> Light altered
829/2022	PNG509	<i>Dekatuwe (Bright) Island</i> Light beacon unlit
968/2019	Aus545 554 PNG679 680	<i>Duke of York Island</i> Shoaling
282/2023	PNG509 513	<i>Galagalohi (Gallows) Reef</i> Light unlit
346/2019	PNG643	<i>Huon Gulf</i> Light buoy off station
794/2022	Aus4622 PNG386 521 522 523	Fish aggregating devices
1331/2019	Aus625 PNG508	<i>Isulailai Point</i> Light beacon unlit
830/2022	PNG508 509 628	<i>Kanaweya (Shortland) Reefs to Nuakata Passage</i> Light beacons unlit
116/2021	PNG392 393 543 666	<i>Kavieng to Neitab Island</i> Shoaling
516/2020	PNG674 677	<i>Kimbe</i> Light beacon unlit
283/2023	PNG515 516 637	<i>Kitava Island</i> Light unlit
284/2023	PNG625	<i>Kui (Mekinley) Island</i> Light unlit
286/2019	PNG646	<i>Madang Harbour</i> Shoaling

48(T)/2024 AUSTRALIA - TEMPORARY AND PRELIMINARY NOTICES

<i>Notice</i>	<i>Charts affected</i>	<i>Locality and Subject</i>
118/2021	Aus399 4604 4622 PNG397 684	<i>Madehas Island</i> Light unlit
1110/2019	PNG628	<i>Oreore Channel</i> Light buoy off station
975/2023	PNG680	<i>Rabaul</i> Light unlit
1058/2023	Aus4604 PNG506	<i>Rothery Passage</i> Light unlit
985/2021	Aus840 841	<i>Saibai Island</i> Shoaling
670/2022	PNG519	<i>Star Reefs Passage</i> Shoaling
285/2023	PNG514	<i>Tamiaris Reef</i> Light unlit
1067/2021	Aus4604 4622 PNG545 554 680	<i>Tavui Point</i> Light unlit
831/2022	PNG543 666	<i>Wadei Island</i> Light beacon unlit
SOLOMON ISLANDS		
44/2020	SLB104	<i>Bina Harbour</i> Shoaling
91/2018	SLB102 301 302	<i>Ghizo Island</i> Shoaling
878/2023	SLB101 201	<i>Honiara</i> Wrecks
677/2017	SLB101	<i>Honiara and Lungga Roads</i> Shoaling
678/2017	SLB101 201	<i>Lungga Point</i> Light beacon unlit
987/2023	SLB101	<i>Lungga Roads</i> Shoaling
789/2023	SLB102 302	<i>Munda Point to Sosomboeke Island</i> Light beacon unreliable; light beacon unlit
842/2023	Aus4622 SLB302	<i>New Georgia Island</i> Light beacon unlit
515/2023	SLB102 301 302	<i>Nusatupe Island</i> Topmarks destroyed
406/2020	SLB102	<i>Port Noro to Kuri Point</i> Shoaling
SOUTHERN OCEAN		
80/2022	Aus600	<i>Antarctica</i> Shoaling
TIMOR-LESTE		
987/2018	Aus901	<i>Dili</i> Light unlit

II

HYDROGRAPHIC REPORTS

NIL

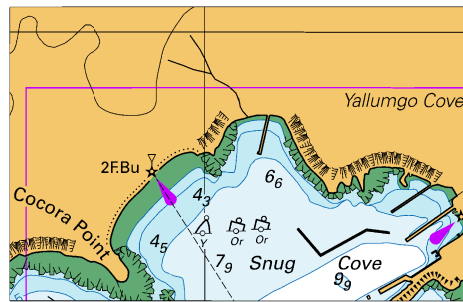
To accompany Australian Notice to Mariners 10/2024

UNEXPLODED ORDNANCE (UXO)

The area is safe for surface navigation only; it is not safe for anchoring, trawling or seabed activities. For details see Mariners Handbook for Australian Waters AHP 20.

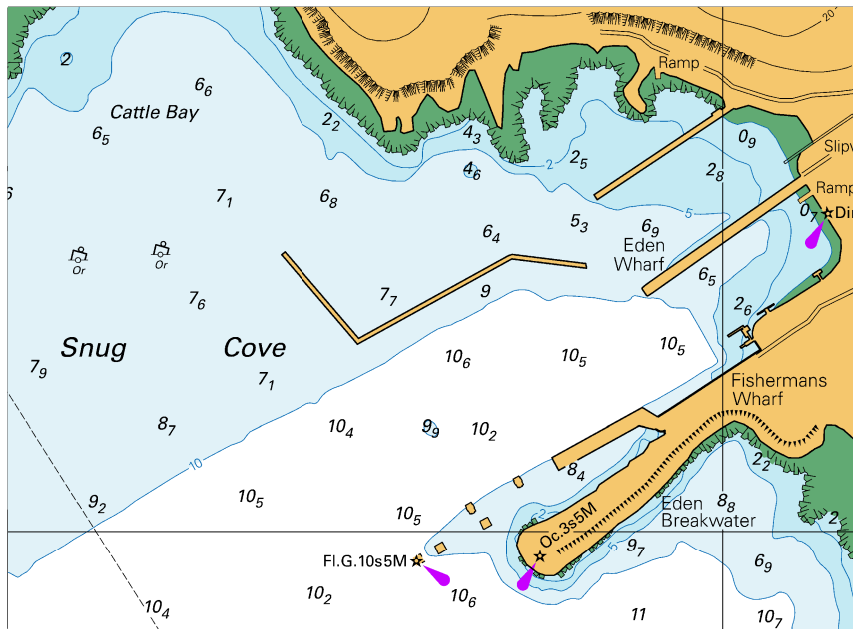
Note for chart Aus 4601

To accompany Australian Notice to Mariners 4/2024



Block A for chart Aus 192 (60.6 x 38.7mm)
© Commonwealth of Australia 2024

To accompany Australian Notice to Mariners 4/2024



Block B for chart Aus 192

© Commonwealth of Australia 2024

(112.7 x 82.2mm)