

To accompany Australian Notice to Mariners 268/2024

PILOT BOARDING PLACE

The outer pilot boarding place is compulsory for all vessels with a LOA of 226 metres or greater.

Note for chart Aus 198

To accompany Australian Notice to Mariners 269/2024

PORT KEMBLA VESSEL TRAFFIC SERVICE
AREA

All vessels proceeding to Port Kembla are required to call the Vessel Traffic Services (VTS) using the call sign "Port Kembla VTS" on VHF Channel 16 at least three (3) hours prior to ETA pilot boarding ground.

Note for chart Aus 808

To accompany Australian Notice to Mariners 269/2024

PORT KEMBLA VESSEL TRAFFIC SERVICE
AREA

All vessels proceeding to Port Kembla are required to call the Vessel Traffic Services (VTS) using the call sign "Port Kembla VTS" on VHF Channel 16 at least three (3) hours prior to ETA pilot boarding ground.

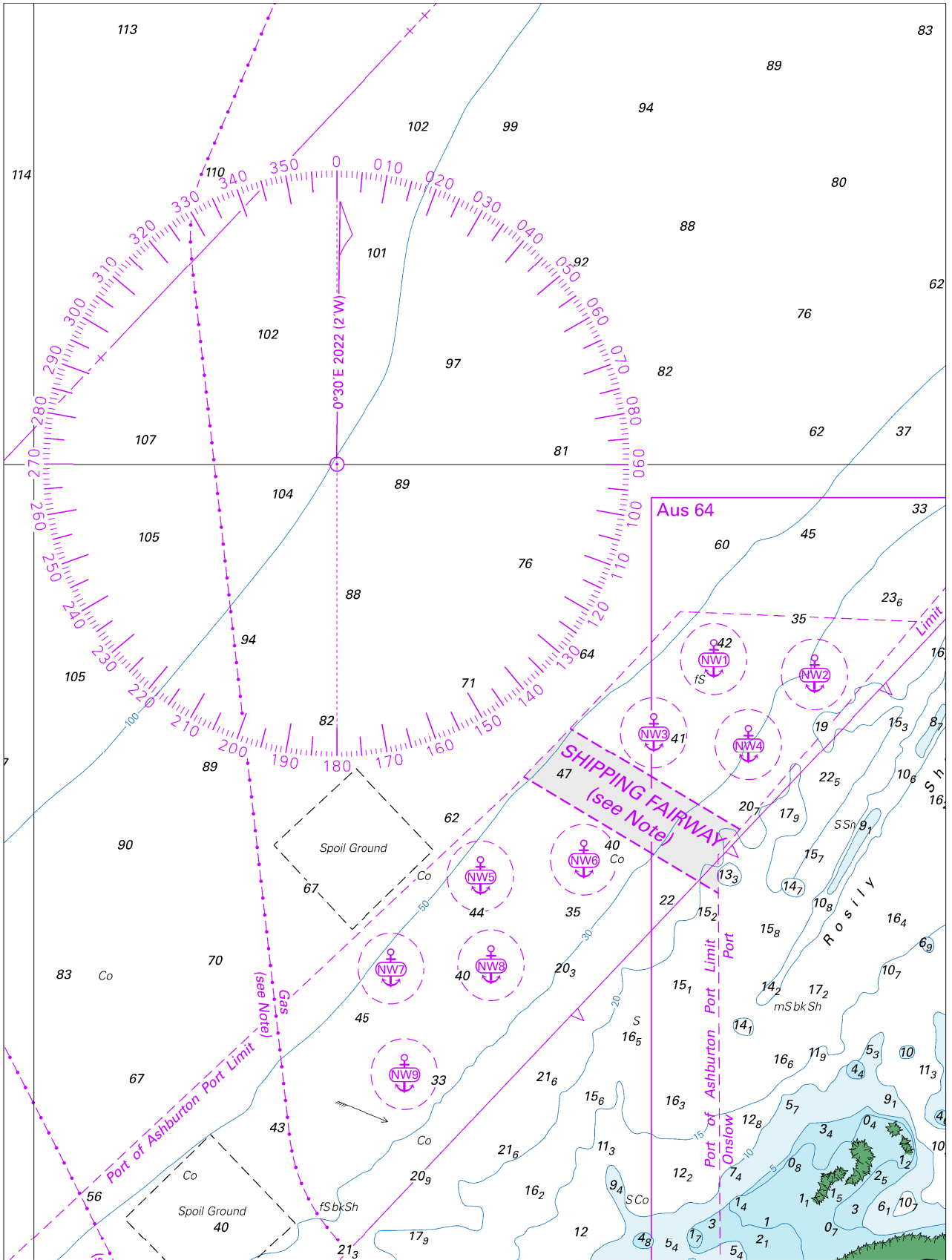
Note for chart Aus 195

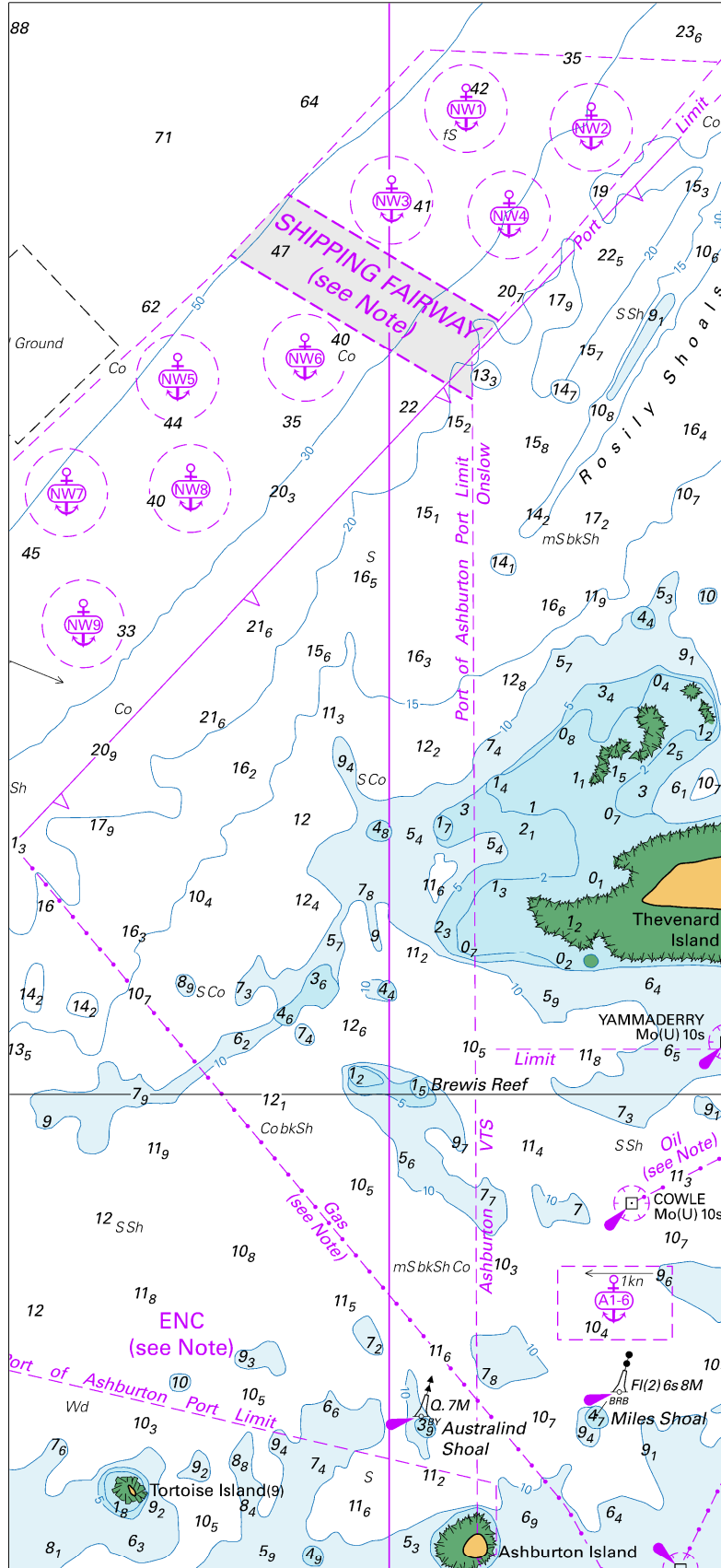
To accompany Australian Notice to Mariners 274/2024

SHIPPING FAIRWAY

Use of the Shipping Fairway is not mandatory, but strongly recommended. The International Regulations for Preventing Collisions at Sea 1972 apply to all vessels navigating within or outside the Shipping Fairway. Use of the fairway does not give vessels any special right of way.

Note for chart Aus 744

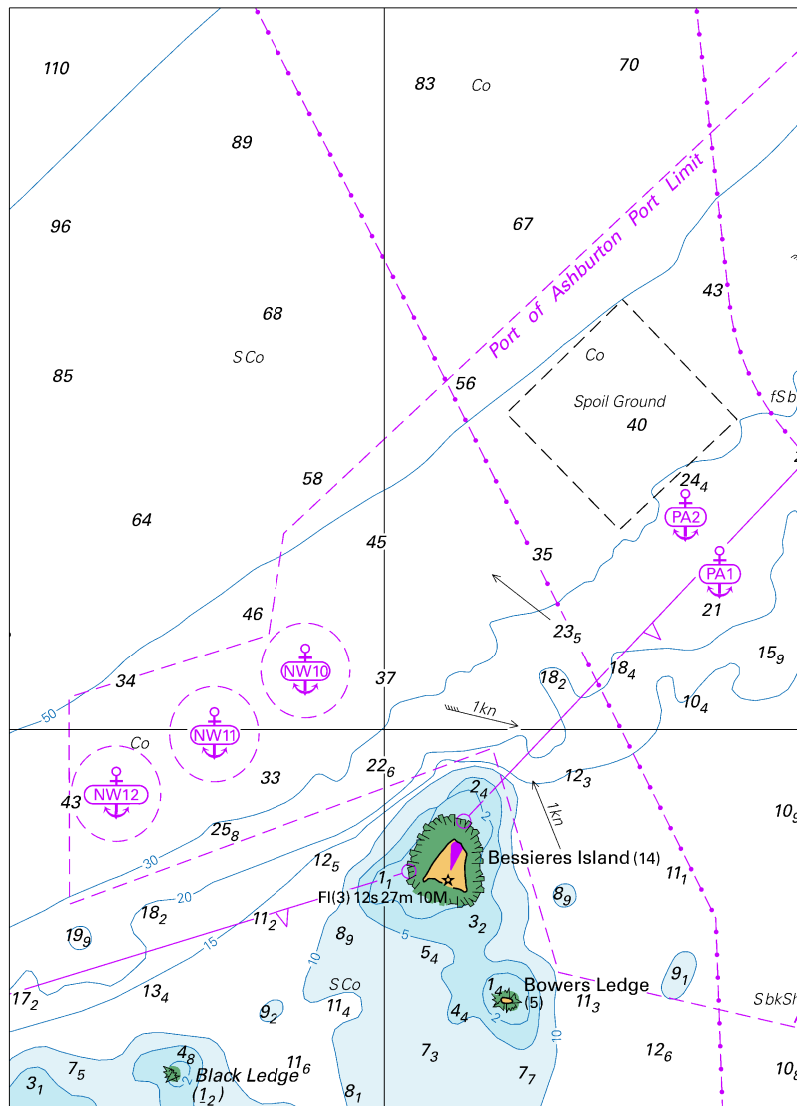




Block B for chart Aus 744

(102.8 x 225.2mm)

To accompany Australian Notice to Mariners 274/2024



Block A for chart Aus 744

(104.9 x 145.0mm)

© Commonwealth of Australia 2024